

# FISHERIES MANAGEMENT PLAN

BLACK HILLS RESERVOIRS, 2015 - 2019



## WHAT MAKES BLACK HILLS RESERVOIR FISHERIES SPECIAL?

There are no natural lakes within the Black Hills. Many impounded waters are the result of different public agencies working to provide angling and recreation opportunities, water storage, or flood control. Most of these waters, including Stockade Lake, were created during the 1930's. Sheridan, Deerfield and Pactola Lakes were created in the 1940's and 1950's. Black Hills anglers enjoy targeting a wide variety of fish species. Balancing management of the limited number of cold water fisheries in the Black Hills can be challenging. While the focus of fisheries management in the Black Hills is often on trout, some waters sustain fisheries for a diversity of cool and warm water fish species.

## BLACK HILLS RESERVOIRS MANAGEMENT PLAN OVERVIEW:

This is a summary of a much larger document guiding fisheries management of Black Hills reservoirs. Plans were developed through staff, commission and public input with the intent of managing reservoir fisheries for the enjoyment of all Black Hills reservoir anglers. This plan is intended to guide Black Hills reservoir management for the next five years. There are five parts to this plan; a general section covering all reservoirs and reservoir-specific plans for Stockade, Sheridan, Deerfield and Pactola Lakes.

## MAJOR ISSUES IDENTIFIED FOR RESERVOIRS:

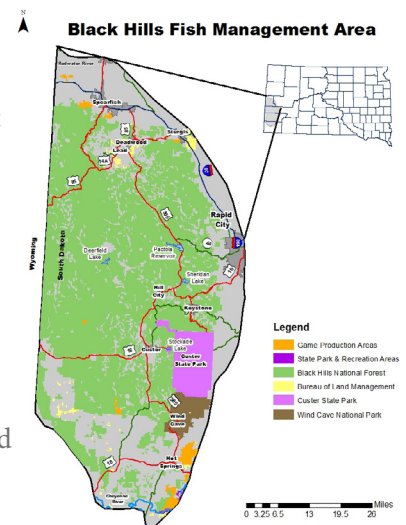
- ▶ The long term impacts of illegally introduced species may negatively affect currently managed fisheries.
- ▶ Readily available Black Hills fishing access information is over 15 years old and needs updating.
- ▶ Current efforts to share fisheries information and discuss management plans with anglers are insufficient.
- ▶ There is a desire from some anglers to diversify the species managed in Black Hills reservoirs.
- ▶ Ice fishing access is insufficient at some waters.
- ▶ On Pactola, rainbow trout stocking may no longer meet angler expectations.
- ▶ Crowding of parking areas may limit access at the Pactola boat ramps.
- ▶ Rock bass are over populated at Deerfield and detract from the angling experience.

## OBJECTIVES ADDRESSING SOME OF THESE ISSUES:

- ▶ Improve winter fishing access.
- ▶ Improve standard fish sampling protocols for Black Hills reservoirs.
- ▶ Develop new information sharing and public input procedures.
- ▶ Update the Guide to Black Hills Fishing Waters.
- ▶ Reduce the density of undesirable fish in Deerfield.
- ▶ Investigate introductory stockings of other trout species.
- ▶ Monitor and maintain the yellow perch fishery at Sheridan Lake.
- ▶ Annually work to maintain a quality panfish fishery at Stockade Lake.
- ▶ Improve shoreline angling on Black Hills reservoirs.

## STRATEGIES TO ACCOMPLISH THESE OBJECTIVES:

- ▶ Stock 8,000 brown trout in Pactola reservoir annually beginning in 2016 and monitor the population.
- ▶ Work to ensure roads are plowed to provide wintertime fishing access.
- ▶ Review stocking history of cool and warm water fish and trout in Black Hills reservoirs.
- ▶ Review current management activities on small reservoirs and evaluate the outcomes and propose potential management changes.



For more information visit [gfp.sd.gov](http://gfp.sd.gov)

To speak with fisheries personnel at the Outdoor Campus West contact:

4130 Adventure Trail  
Rapid City, SD 57702  
Phone 605-394-2391  
Or Email to [wildinfo@state.sd.us](mailto:wildinfo@state.sd.us)

Plans can be found at: [gfp.sd.gov](http://gfp.sd.gov)  
To learn about aquatic invasive species visit [SDLeastWanted.com](http://SDLeastWanted.com)

