

PHEASANT

The 2011 pheasant season covered 15 October 2011 – 1 January 2012 statewide. There was also a Youth season open 1-5 October on public and private land and an early residents-only season open 8-10 October on public lands only. The daily limit was 3 cock pheasants, possession 15. To hunt pheasants, residents were required to hold small game, 1-day small game, adult or junior combination, or youth small game licenses; nonresidents were required to obtain the nonresident small game the nonresident youth small game, or nonresident shooting preserve license. Harvest surveys were sent to both resident and nonresident hunters. No shooting preserve license holders were surveyed and none of their harvest is included in any of the data in this report.

In 2011, there were 88,624 resident and 100,111 nonresident licenses issued that allowed holders to hunt pheasants. Approximately 31% of residents and 20% of nonresidents were surveyed for the upland bird seasons. Survey response rates were 41.2% for residents and 50.2% for nonresidents.

Based on survey responses indicating at least one day of hunting pheasants, there were a projected 69,120 resident (26,461 small game, 32,903 combination, 4,848 youth small game, 4,908 junior combination) and 95,077 nonresident (92,179 small game, 2,898 youth small game) pheasant hunters.

From the survey responses, a projected total of 1,555,307 pheasants were harvested (644,412 by residents, 910,894 by nonresidents) during the 2011 seasons. When asked their satisfaction on the season, (1 being least satisfied, 7 being most satisfied), resident upland bird hunters reported an average satisfaction rating of 4.78 while nonresidents reported a higher satisfaction rating of 5.63.

Approximately 15,224 residents participated in the early, resident-only season. The projected harvest for this season was 30,223 birds.

The Youth-only season overall participation rate was approximately 7.8% (7.5% Combination license, 6.7% Small Game, 9.0% Junior Combination, 21.6% Youth Small Game); nonresidents were not surveyed on their participation in this season.

The five counties with the highest reported harvests from highest to lowest were Lyman, Tripp, Brown, Spink and Brule.

Comparison of the 2002 - 2011 Pheasant season statistics

Year	<i>Resident Hunters</i>					<i>Nonresident Hunters</i>				
	<i>Number Hunters</i>	<i>Harvest</i>	<i>Ave Day Hunted</i>	<i>Ave Bag</i>	<i>Satisfaction</i>	<i>Number Hunters</i>	<i>Harvest</i>	<i>Ave Day Hunted</i>	<i>Ave Bag</i>	<i>Satisfaction</i>
2002	70,822	587,823	6.84	8.30	4.28	74,874	673,866	4.18	9.00	5.01
2003	78,396	912,529	7.21	11.64	5.08	83,538	902,210	4.21	10.80	5.72
2004	78,984	744,819	7.35	9.43	4.62	91,948	908,446	3.83	9.88	5.25
2005	79,270	947,277	7.94	11.95	5.19	94,956	1,001,786	4.43	10.55	5.83
2006	79,955	881,904	7.63	11.03	4.99	98,213	964,452	4.29	9.82	5.71
2007	77,788	969,238	7.88	12.46	5.39	103,048	1,153,107	4.61	11.19	6.00
2008	75,978	877,546	7.33	11.55	5.31	100,254	1,058,682	4.49	10.56	5.86
2009	69,949	715,578	7.14	10.23	4.93	97,350	932,613	4.33	9.58	5.59
2010	72,465	803,637	7.16	11.09	5.20	100,189	1,027,939	4.42	10.26	5.88
2011	69,120	644,412	6.83	9.68	4.78	95,077	910,894	4.46	9.63	5.63

PHEASANT HARVEST PROJECTIONS FOR 2011

Revised: 13 Feb 2012

	RESIDENT TOTALS BY LICENSE TYPE					NONRESIDENT TOTALS		
	Small		Junior	Youth	Sum	Nonres	Youth Sm	Sum
	Game	Combo	Combo	SmGm	Estimates	Sm Game	Game	Estimates
Licenses Sold	31,871	43,437	7,498	5,818	88,624	96,971	3,140	100,111
Projected ACTIVE UPLAND BIRD HUNTERS	26,641	33,238	4,882	4,914	69,674	92,581	2,920	95,502
Number Sampled by Survey	9,213	15,699	1,670	1,215	27,797	19,620	377	19,997
Number Responded to Survey	3,752	6,875	391	421	11,439	9,906	136	10,042
Responded and Participated in Season	3,211	5,267	275	372	9,125	9,672	128	9,800
Responded but DID NOT HUNT	541	1,608	116	49	2,314	234	8	242
Survey Response Rate	40.7%	43.8%	23.4%	34.7%	41.2%	50.5%	36.1%	50.2%
No. Hunters Reporting Pheasant Days	3,180	5,215	271	366	9,032	9,630	127	9,757
Sum Pheasant Hunted Days	19,356	38,283	1,719	2,306	61,664	43,085	474	43,559
Average Days Hunted Pheasants	6.09	7.34	6.34	6.30	6.83	4.47	3.73	4.46
Sum Pheasants Bagged	26,220	56,781	1,951	2,467	87,419	93,095	867	93,962
Average Pheasant Bag for Season	8.25	10.89	7.20	6.74	9.68	9.67	6.83	9.63
Projected Days Pheasant Hunting	161,064	241,539	30,753	30,920	464,277	412,413	10,815	423,228
Projected No. Pheasant Hunters	26,461	32,903	4,848	4,908	69,120	92,179	2,898	95,077
Projected Pheasant Bag	218,181	358,249	34,904	33,079	644,412	891,113	19,782	910,894
TOTAL PHEASANT HARVEST =						1,555,307		
RESIDENT-ONLY OPENING WEEKEND:								
No. Hunters Reporting Pheasant Days	637	1,130	85	113	1,965	-	-	-
Sum Pheasant Hunted Days	994	1,647	117	169	2,927	-	-	-
Average Days Hunted Pheasants	1.56	1.46	1.38	1.50	1.49	-	-	-
Sum Pheasants Bagged	1,289	2,248	154	210	3,901	-	-	-
Average Pheasant Bag for Weekend	2.02	1.99	1.81	1.86	1.99	-	-	-
Projected Days Pheasant Hunting	8,443	10,406	2,244	2,335	22,677	-	-	-
Projected No. Pheasant Hunters	5,411	7,139	1,630	1,562	15,224	-	-	-
Projected Pheasant Bag	10,949	14,203	2,953	2,902	30,223	-	-	-
RESIDENT-ONLY WEEKEND PHEASANT HARVEST =						30,223		
MENTORED YOUTH PARTICIPATION:								
No. Hunters Reporting Participation	146	350	NA	NA	496	-	-	-
Projected No. Hunters Participating	1,240	2,211			3,452	-	-	-
Percent Hunters Participating	3.9%	5.1%			4.7%	-	-	-
Upland Bird Hunters Mean Satisfaction Score *	4.83	4.76	4.50	4.74	4.78	5.63	5.63	5.63

* Based on scale of 1-7 with 1="very dissatisfied" and 7="very satisfied"

RESIDENT-ONLY WEEKEND 2011 PHEASANT SEASON PARTICIPATION AND BAG

Last Revised: 15 March 2012

	# Days	#	% of Total	Ave. Bag
	Hunted	Responded		
Residents	0	9,474	82.8%	
	1	1,209	10.6%	1.15
	2	550	4.8%	3.00
	3	206	1.8%	4.37

2011 YOUTH-ONLY PHEASANT SEASON PARTICIPATION

Last Revised: 15 March 2012

License Type	Number	Did Not	Percent
	Participated	Participate	Participated
Small Game	251	3,501	6.7%
Combination	518	6,357	7.5%
Youth Small Game	91	330	21.6%
Junior Combination	35	356	9.0%
Total	895	10,544	7.8%

Total Pheasant Harvest Distribution by County 2011

COUNTY	HUNTER DISTRIBUTION			HARVEST DISTRIBUTION			Birds/Hunter **
	# Projected	% of Total	# Proj w/Unk *	# Projected	% of Total	# Proj w/Unk *	
Minnehaha	2,058	1.3	2,099	10,275	0.7	10,395	5.0
Pennington	497	0.3	507	2,979	0.2	3,012	6.0
Brown	9,753	6.0	9,884	83,314	5.4	84,094	8.5
Beadle	6,949	4.3	7,049	61,523	4.0	62,121	8.9
Codington	2,415	1.5	2,454	20,672	1.3	20,892	8.6
Brookings	2,920	1.8	2,974	18,740	1.2	18,952	6.4
Yankton	1,163	0.7	1,185	5,650	0.4	5,712	4.9
Davison	4,734	2.9	4,795	37,893	2.5	38,246	8.0
Lawrence	40	0.0	41	139	0.0	140	3.4
Aurora	4,237	2.6	4,300	41,931	2.7	42,349	9.9
Bennett	1,411	0.9	1,436	15,081	1.0	15,245	10.7
Bon Homme	840	0.5	857	4,493	0.3	4,546	5.3
Brule	7,234	4.5	7,327	69,419	4.5	70,066	9.6
Buffalo	930	0.6	943	11,444	0.7	11,553	12.3
Butte	282	0.2	288	1,666	0.1	1,685	5.9
Campbell	2,050	1.3	2,076	22,041	1.4	22,238	10.8
Charles Mix	3,971	2.5	4,031	28,486	1.8	28,767	7.2
Clark	4,096	2.5	4,152	36,633	2.4	36,980	8.9
Clay	610	0.4	621	2,597	0.2	2,626	4.3
Corson	701	0.4	713	6,692	0.4	6,762	9.5
Custer	119	0.1	121	1,107	0.1	1,120	9.3
Day	2,235	1.4	2,267	13,025	0.8	13,151	5.8
Deuel	1,066	0.7	1,084	6,948	0.5	7,022	6.5
Dewey	1,592	1.0	1,612	19,303	1.3	19,481	12.1
Douglas	1,691	1.0	1,715	11,768	0.8	11,882	7.0
Edmunds	5,121	3.2	5,189	58,350	3.8	58,903	11.4
Fall River	552	0.3	563	3,660	0.2	3,702	6.6
Faulk	4,343	2.7	4,399	56,758	3.7	57,297	13.1
Grant	661	0.4	673	3,225	0.2	3,262	4.9
Gregory	3,304	2.0	3,346	31,256	2.0	31,542	9.5
Haakon	1,315	0.8	1,338	9,995	0.6	10,104	7.6
Hamlin	1,429	0.9	1,454	9,683	0.6	9,788	6.8
Hand	5,721	3.5	5,798	61,329	4.0	61,915	10.7
Hanson	1,220	0.8	1,240	10,625	0.7	10,739	8.7
Harding	322	0.2	327	2,811	0.2	2,841	8.7
Hughes	5,026	3.1	5,102	55,681	3.6	56,257	11.1
Hutchinson	1,870	1.2	1,901	16,093	1.0	16,264	8.6
Hyde	1,673	1.0	1,697	20,414	1.3	20,616	12.2
Jackson	263	0.2	268	2,272	0.1	2,299	8.6
Jerauld	2,544	1.6	2,579	24,441	1.6	24,673	9.6
Jones	1,855	1.1	1,882	19,973	1.3	20,169	10.8
Kingsbury	2,367	1.5	2,406	16,449	1.1	16,623	6.9
Lake	1,426	0.9	1,453	9,294	0.6	9,400	6.5
Lincoln	911	0.6	929	5,080	0.3	5,141	5.6
Lyman	8,998	5.6	9,117	102,721	6.7	103,705	11.4
McCook	1,437	0.9	1,465	11,268	0.7	11,404	7.8
McPherson	3,190	2.0	3,230	36,022	2.3	36,351	11.3
Marshall	1,288	0.8	1,307	8,483	0.6	8,563	6.6
Meade	212	0.1	215	1,286	0.1	1,299	6.1
Mellette	510	0.3	518	4,056	0.3	4,097	8.0
Miner	2,861	1.8	2,907	27,745	1.8	28,033	9.7
Moody	961	0.6	980	7,108	0.5	7,193	7.4
Perkins	1,504	0.9	1,529	14,518	0.9	14,670	9.7
Potter	4,571	2.8	4,636	58,312	3.8	58,893	12.8
Roberts	1,034	0.6	1,052	6,079	0.4	6,142	5.9
Sanborn	2,289	1.4	2,326	22,041	1.4	22,266	9.6
Spink	7,696	4.8	7,795	79,817	5.2	80,559	10.4
Stanley	1,843	1.1	1,870	19,683	1.3	19,878	10.7
Sully	3,531	2.2	3,585	43,669	2.8	44,125	12.4
Tripp	9,272	5.7	9,391	99,719	6.5	100,653	10.8
Turner	1,065	0.7	1,085	6,901	0.4	6,978	6.5
Union	425	0.3	434	1,314	0.1	1,330	3.1
Walworth	3,075	1.9	3,119	33,302	2.2	33,628	10.8
Ziebach	177	0.1	180	1,654	0.1	1,671	9.3
Shannon	70	0.0	71	703	0.0	710	10.1
Todd	303	0.2	308	2,563	0.2	2,588	8.4
Unk/Unreported	2,366	-	-	15,135	-	-	6.4
TOTALS:	164,197	100%	164,197	1,555,307	100%	1,555,307	9.47

Last Revised: 15 Feb 2012

* Includes unknown county projection values by assuming unknown county values are distributed the same as reported county values. Total values may be different due to rounding.

** Calculation uses "# projected" values without correction for unknown/unreported county values.

Resident Pheasant Harvest Distribution by County 2011

COUNTY	HUNTER DISTRIBUTION				HARVEST DISTRIBUTION				Birds/Hunter **
	# Reported	# Projected	% of Total	# Proj w/ Unk *	# Reported	# Projected	% of Total	# Proj w/ Unk *	
Minnehaha	232	1,775	2.6	1,814	1,148	8,463	1.3	8,568	4.8
Pennington	51	390	0.6	399	291	2,145	0.3	2,172	5.5
Brown	401	3,069	4.5	3,135	3,501	25,808	4.1	26,129	8.4
Beadle	363	2,778	4.1	2,838	3,271	24,112	3.8	24,413	8.7
Codington	178	1,362	2.0	1,392	1,672	12,325	1.9	12,479	9.0
Brookings	286	2,189	3.2	2,236	1,886	13,903	2.2	14,076	6.4
Yankton	110	842	1.2	860	510	3,759	0.6	3,806	4.5
Davison	178	1,362	2.0	1,392	1,541	11,360	1.8	11,501	8.3
Lawrence	4	31	0.0	31	7	52	0.0	52	1.7
Aurora	248	1,898	2.8	1,939	2,528	18,635	2.9	18,867	9.8
Bennett	122	934	1.4	954	1,333	9,826	1.5	9,949	10.5
Bon Homme	92	704	1.0	719	503	3,708	0.6	3,754	5.3
Brule	264	2,020	3.0	2,064	2,843	20,957	3.3	21,218	10.4
Buffalo	35	268	0.4	274	528	3,892	0.6	3,941	14.5
Butte	33	253	0.4	258	180	1,327	0.2	1,343	5.3
Campbell	68	520	0.8	532	640	4,718	0.7	4,777	9.1
Charles Mix	240	1,837	2.7	1,877	1,609	11,861	1.9	12,009	6.5
Clark	180	1,378	2.0	1,407	1,645	12,126	1.9	12,277	8.8
Clay	58	444	0.7	454	255	1,880	0.3	1,903	4.2
Corson	56	429	0.6	438	512	3,774	0.6	3,821	8.8
Custer	13	99	0.1	102	137	1,010	0.2	1,022	10.2
Day	115	880	1.3	899	678	4,998	0.8	5,060	5.7
Deuel	82	628	0.9	641	573	4,224	0.7	4,277	6.7
Dewey	59	452	0.7	461	734	5,411	0.9	5,478	12.0
Douglas	86	658	1.0	672	597	4,401	0.7	4,456	6.7
Edmunds	207	1,584	2.3	1,619	2,667	19,660	3.1	19,905	12.4
Fall River	62	474	0.7	485	386	2,845	0.4	2,881	6.0
Faulk	160	1,224	1.8	1,251	2,601	19,173	3.0	19,412	15.7
Grant	66	505	0.7	516	331	2,440	0.4	2,470	4.8
Gregory	121	926	1.4	946	1,122	8,271	1.3	8,374	8.9
Haakon	112	857	1.3	876	889	6,553	1.0	6,635	7.6
Hamlin	118	903	1.3	923	827	6,096	1.0	6,172	6.8
Hand	242	1,852	2.7	1,892	2,937	21,650	3.4	21,920	11.7
Hanson	97	742	1.1	758	910	6,708	1.1	6,792	9.0
Harding	23	176	0.3	180	234	1,725	0.3	1,746	9.8
Hughes	304	2,326	3.4	2,377	4,008	29,545	4.6	29,913	12.7
Hutchinson	145	1,110	1.6	1,134	1,302	9,598	1.5	9,717	8.6
Hyde	90	689	1.0	704	1,182	8,713	1.4	8,822	12.7
Jackson	28	214	0.3	219	253	1,865	0.3	1,888	8.7
Jerauld	116	888	1.3	907	1,122	8,271	1.3	8,374	9.3
Jones	96	735	1.1	751	1,109	8,175	1.3	8,277	11.1
Kingsbury	168	1,286	1.9	1,314	1,278	9,421	1.5	9,538	7.3
Lake	143	1,094	1.6	1,118	957	7,055	1.1	7,142	6.4
Lincoln	105	804	1.2	821	622	4,585	0.7	4,642	5.7
Lyman	352	2,694	4.0	2,752	4,983	36,732	5.8	37,190	13.6
McCook	161	1,232	1.8	1,259	1,380	10,173	1.6	10,299	8.3
McPherson	96	735	1.1	751	1,257	9,266	1.5	9,381	12.6
Marshall	69	528	0.8	540	388	2,860	0.4	2,896	5.4
Meade	20	153	0.2	156	85	627	0.1	634	4.1
Mellette	31	237	0.4	242	253	1,865	0.3	1,888	7.9
Miner	202	1,546	2.3	1,579	1,999	14,736	2.3	14,919	9.5
Moody	109	834	1.2	852	863	6,362	1.0	6,441	7.6
Perkins	110	842	1.2	860	1,070	7,888	1.2	7,986	9.4
Potter	228	1,745	2.6	1,783	3,497	25,778	4.1	26,100	14.8
Roberts	88	673	1.0	688	442	3,258	0.5	3,299	4.8
Sanborn	154	1,179	1.7	1,204	1,479	10,903	1.7	11,038	9.3
Spink	271	2,074	3.1	2,119	3,212	23,677	3.7	23,972	11.4
Stanley	97	742	1.1	758	1,163	8,573	1.3	8,680	11.5
Sully	222	1,699	2.5	1,736	3,236	23,854	3.7	24,152	14.0
Tripp	333	2,548	3.8	2,604	4,214	31,064	4.9	31,451	12.2
Turner	101	773	1.1	790	660	4,865	0.8	4,926	6.3
Union	53	406	0.6	414	169	1,246	0.2	1,261	3.1
Walworth	151	1,156	1.7	1,181	1,827	13,468	2.1	13,636	11.7
Ziebach	13	99	0.1	102	106	781	0.1	791	7.9
Shannon	4	31	0.0	31	48	354	0.1	358	11.6
Todd	18	138	0.2	141	153	1,128	0.2	1,142	8.2
Unk/Unreported	192	1,469	-	-	1,076	7,932	-	-	5.4
TOTALS:	9,032	69,120	100%	69,120	87,419	644,412	100%	644,412	9.32

Last Revised: 15 Feb 2012

* Includes unknown county projection values by assuming unknown county values are distributed the same as reported county values. Total values may be different due to rounding.

** Calculation uses "# projected" values without correction for unknown/unreported county values.

Nonresident Pheasant Harvest Distribution by County 2011

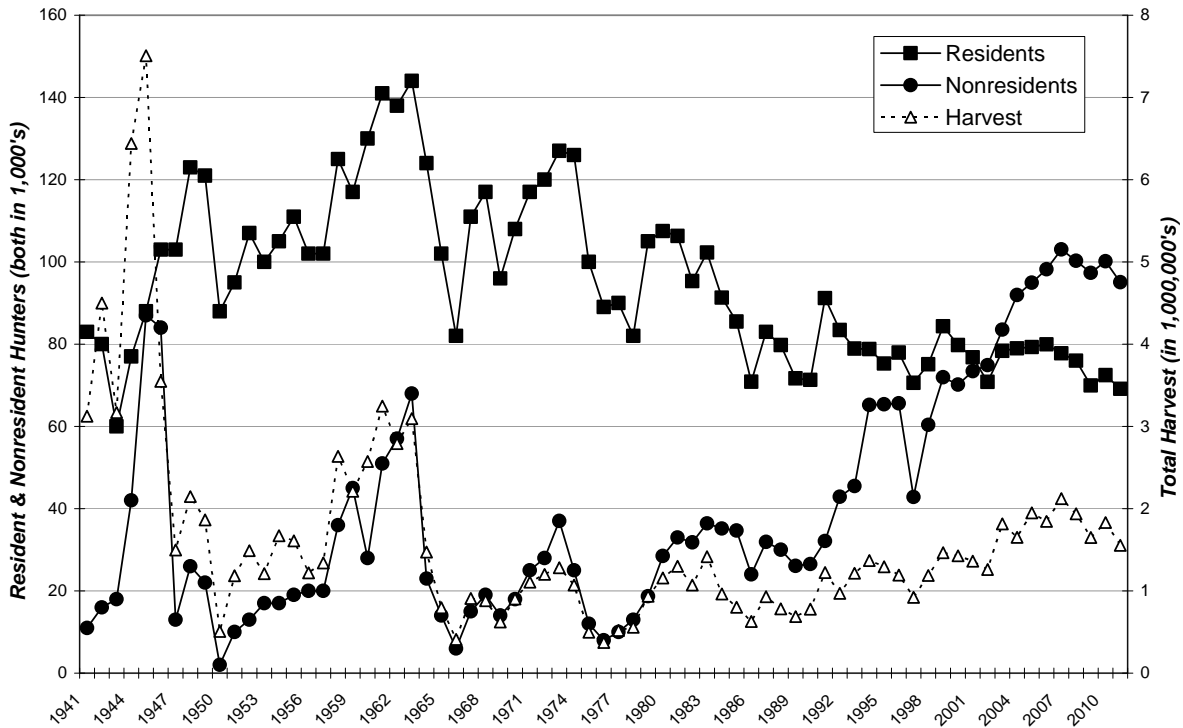
COUNTY	HUNTER DISTRIBUTION				HARVEST DISTRIBUTION				Birds/Hunter **
	# Reported	# Projected	% of Total	# Proj w/ Unk *	# Reported	# Projected	% of Total	# Proj w/ Unk *	
Minnehaha	29	283	0.3	285	187	1,813	0.2	1,827	6.4
Pennington	11	107	0.1	108	86	834	0.1	840	7.8
Brown	686	6,685	7.1	6,748	5,932	57,506	6.4	57,965	8.6
Beadle	428	4,171	4.4	4,210	3,859	37,410	4.1	37,708	9.0
Codington	108	1,052	1.1	1,062	861	8,347	0.9	8,413	7.9
Brookings	75	731	0.8	738	499	4,837	0.5	4,876	6.6
Yankton	33	322	0.3	325	195	1,890	0.2	1,905	5.9
Davison	346	3,372	3.6	3,404	2,737	26,533	2.9	26,745	7.9
Lawrence	1	10	0.0	10	9	87	0.0	88	9.0
Aurora	240	2,339	2.5	2,361	2,403	23,295	2.6	23,481	10.0
Bennett	49	477	0.5	482	542	5,254	0.6	5,296	11.0
Bon Homme	14	136	0.1	138	81	785	0.1	791	5.8
Brule	535	5,213	5.5	5,263	4,999	48,462	5.4	48,848	9.3
Buffalo	68	663	0.7	669	779	7,552	0.8	7,612	11.4
Butte	3	29	0.0	30	35	339	0.0	342	11.6
Campbell	157	1,530	1.6	1,544	1,787	17,324	1.9	17,462	11.3
Charles Mix	219	2,134	2.3	2,154	1,715	16,626	1.8	16,758	7.8
Clark	279	2,719	2.9	2,745	2,528	24,507	2.7	24,702	9.0
Clay	17	166	0.2	167	74	717	0.1	723	4.3
Corson	28	273	0.3	275	301	2,918	0.3	2,941	10.7
Custer	2	19	0.0	20	10	97	0.0	98	5.0
Day	139	1,354	1.4	1,367	828	8,027	0.9	8,091	5.9
Deuel	45	439	0.5	443	281	2,724	0.3	2,746	6.2
Dewey	117	1,140	1.2	1,151	1,433	13,892	1.5	14,003	12.2
Douglas	106	1,033	1.1	1,043	760	7,368	0.8	7,426	7.1
Edmunds	363	3,537	3.8	3,571	3,991	38,690	4.3	38,998	10.9
Fall River	8	78	0.1	79	84	814	0.1	821	10.4
Faulk	320	3,118	3.3	3,148	3,877	37,585	4.2	37,884	12.1
Grant	16	156	0.2	157	81	785	0.1	791	5.0
Gregory	244	2,378	2.5	2,400	2,371	22,985	2.5	23,168	9.7
Haakon	47	458	0.5	462	355	3,441	0.4	3,469	7.5
Hamlin	54	526	0.6	531	370	3,587	0.4	3,615	6.8
Hand	397	3,869	4.1	3,905	4,093	39,679	4.4	39,995	10.3
Hanson	49	477	0.5	482	404	3,916	0.4	3,948	8.2
Harding	15	146	0.2	148	112	1,086	0.1	1,094	7.4
Hughes	277	2,699	2.9	2,725	2,696	26,136	2.9	26,344	9.7
Hutchinson	78	760	0.8	767	670	6,495	0.7	6,547	8.5
Hyde	101	984	1.0	994	1,207	11,701	1.3	11,794	11.9
Jackson	5	49	0.1	49	42	407	0.0	410	8.4
Jerauld	170	1,657	1.8	1,672	1,668	16,170	1.8	16,299	9.8
Jones	115	1,121	1.2	1,131	1,217	11,798	1.3	11,892	10.5
Kingsbury	111	1,082	1.1	1,092	725	7,028	0.8	7,084	6.5
Lake	34	331	0.4	334	231	2,239	0.2	2,257	6.8
Lincoln	11	107	0.1	108	51	494	0.1	498	4.6
Lyman	647	6,305	6.7	6,365	6,807	65,989	7.3	66,515	10.5
McCook	21	205	0.2	207	113	1,095	0.1	1,104	5.4
McPherson	252	2,456	2.6	2,479	2,760	26,756	3.0	26,969	10.9
Marshall	78	760	0.8	767	580	5,623	0.6	5,667	7.4
Meade	6	58	0.1	59	68	659	0.1	664	11.3
Mellette	28	273	0.3	275	226	2,191	0.2	2,208	8.0
Miner	135	1,316	1.4	1,328	1,342	13,010	1.4	13,113	9.9
Moody	13	127	0.1	128	77	746	0.1	752	5.9
Perkins	68	663	0.7	669	684	6,631	0.7	6,684	10.0
Potter	290	2,826	3.0	2,853	3,356	32,534	3.6	32,793	11.5
Roberts	37	361	0.4	364	291	2,821	0.3	2,844	7.8
Sanborn	114	1,111	1.2	1,121	1,149	11,139	1.2	11,228	10.0
Spink	577	5,623	6.0	5,676	5,791	56,140	6.2	56,587	10.0
Stanley	113	1,101	1.2	1,112	1,146	11,110	1.2	11,198	10.1
Sully	188	1,832	1.9	1,849	2,044	19,815	2.2	19,973	10.8
Tripp	690	6,724	7.1	6,788	7,082	68,655	7.6	69,202	10.2
Turner	30	292	0.3	295	210	2,036	0.2	2,052	7.0
Union	2	19	0.0	20	7	68	0.0	68	3.5
Walworth	197	1,920	2.0	1,938	2,046	19,835	2.2	19,993	10.3
Ziebach	8	78	0.1	79	90	872	0.1	879	11.2
Shannon	4	39	0.0	39	36	349	0.0	352	9.0
Todd	17	166	0.2	167	148	1,435	0.2	1,446	8.7
Unk/Unreported	92	896	-	-	743	7,203	-	-	8.0
TOTALS	9,757	95,077	100%	95,077	93,962	910,894	100%	910,894	9.58

Last Revised: 15 Feb 2012

* Includes unknown county projection values by assuming unknown county values are distributed the same as reported county values. Total values may be different due to rounding.

** Calculation uses "# projected" values without correction for unknown/unreported county values.

SOUTH DAKOTA PHEASANT HARVEST 1941-2011



SOUTH DAKOTA PHEASANT HUNTERS AND AVERAGE SEASON HARVEST 1941-2011

