



## **AGENDA - revised**

### **Game, Fish and Parks Commission**

October 5-6, 2017

Game, Fish, and Parks - Outdoor Campus West

4130 Adventure Trail, Rapid City, SD

Livestream link <http://www.sd.net/home/>

#### **9:30 AM Spearfish Falls Trail Dedication**

#### **Call to order 1:00 PM MT**

#### **Division of Administration**

##### Action Items:

1. Conflict of Interest Disclosure
2. Approve Minutes of the 2017 September Meeting <http://gfp.sd.gov/agency/commission/docs/2017/september/minutes.pdf>
3. Additional Commissioner Salary Days
4. Election of Officers
5. License List Request

##### Information Items:

6. Rapid City Convention Center & Visitors Bureau 1:10 p.m.
7. Black Hills Fly Fishers 1:15 p.m.
8. Club for Boys Recognition 3:30 p.m.
9. Dick and Sue Brown Recognition 4:30 p.m.
10. Non-meandered Waters Update

#### **Executive Session**

#### **Petition for Rule Change**

11. Mountain Lion – Use of Hounds
12. Mountain Lion – Legal Lions

#### **Proposals**

13. Marking of Non-meandered Waters
14. Bighorn Sheep Hunting Season
15. CSP Antlerless Elk Hunting Season
16. Threatened and Endangered Species
17. Aerial Hunting Permits
18. Walleye Length Limit on Lake Poinsett
19. Bait Dealer Application Requirements
20. Park Entrance and Camping Fee Changes

## **Open Forum**

### **Division of Parks and Recreation**

Information Items:

21. Custer State Park Project Update
22. Parks Revenue and Camping Reservation Report

### **Division of Wildlife**

Information Items:

23. Land Acquisition Projects
24. ADC Policy Advisory Committee Report
25. WDM Work Group Report
26. Surveillance and Sampling of Deer
27. Threatened and Endangered Species Status Reviews
28. Spearfish Creek Brown Trout Study
29. Rapid Creek Hydrology Modeling
30. OCW Hunter Education Building and Archery Park – Rapid City
31. Outdoor Education in Western SD
32. License Sales Update

## **Solicitation of Agenda Items from Commissioners**

### **Adjourn**

Next meeting information:

November, 2-3, 2017  
631 22nd Avenue, Brookings, SD

GFP Commission Meeting Archives

<http://gfp.sd.gov/agency/commission/archive/2017/Sept/default.aspx>

Minutes of the Game, Fish, and Parks Commission  
September 7-8, 2017

Chairperson Peterson called the meeting to order at 1:00 p.m. CT at Ramada Hotel and Suites in Sioux Falls, South Dakota. Commissioners Cathy Peterson, Mary Anne Boyd, H. Paul Dennert, Barry Jensen, Gary Jensen, Russell Olson and Douglas Sharp were present. Approximately 45 public, staff, and media were present.

**DIVISION OF ADMINISTRATION**

**Conflict of Interest Disclosure**

Chairperson Peterson called for conflicts of interest to be disclosed. None were presented.

**Livestreaming**

Chris Hull, communications specialist, provided a brief overview on the livestreaming process that will provide more access for the public to listen to the GFP Commission meetings live. Hull will work with staff from SDPB for a six month trial period, beginning with this meeting, to get a baseline of knowing what, customers expect, who wants to listen and how to deliver information from the Commission meetings in real time. During this process we will track the number of live listeners as well as the customers who are listening after the meeting. After six months, the Commission will determine if the investment is worth it to continue and if it has met expectations.

Kelly Hepler, cabinet secretary, explained how providing better ways to communicate with our customers, is a priority for the department and aligns with our strategic plan. This will allow us to continue to be as transparent as possible.

**Approval of Minutes**

Chairperson Peterson called for any additions or corrections to the July 13-14, 2017 minutes and August 3, 2017 special meeting minutes or a motion for approval.

Motion by G. Jensen with second by Dennert TO APPROVE THE MINUTES OF THE JULY 13-14, 2017 AND AUGUST 3, 2017 SPECIAL MEETING. Motion carried unanimously.

**Additional Commissioner Salary Days**

Commissioner Phillips requested one day for depredation meeting and one for deer plan meetings, Commissioner Olson requested one day for deer plan meeting, Commissioner B. Jensen requested one day for an elk meeting and Commissioner Dennert requested one day for a land tour.

Motion by Boyd with second by Sharp TO APPROVE THE ADDITIONAL SALARY DAYS AS REQUESTED. Motion carried unanimously.

**License List Requests**

Chris Petersen, administration division director, presented a full fee licenses list request for the number of licenses issued by the state for a year from Midwest Hunting and Fishing of Sioux Falls, SD to be used for marketing purposes.

Motion by B. Jensen with second by Phillips TO APPROVE THE LICENSE LIST REQUEST. Motion carried unanimously.

### **Commission Meeting Schedule 2018**

Petersen presented the 2018 Commission meeting calendar noting meeting locations are determined by considering factors such as adequate facility space and accommodation services, wireless connections, and relationship of location to agenda items.

Motion by Sharp with second by Boyd TO APPROVE THE 2018 COMMISSION MEETING SCHEDULE WITH ADJUSTMENT TO THE OCTOBER MEETING DATE. Motion carried unanimously.

Charlie Rokusek, president of the 29-90 Sportsmen Club presented Game, Fish and Parks a \$1,000 check for pheasant habitat endowment.

Commissioner B. Jensen thanked Charlie and the 29-90 Sportsmen Club for their donation.

Mr. Rokusek also informed the Commission that his club has selected Emmett Keyser, Region 3 Supervisor for the Wildlife Division as the recipient of the club's 2017 Sportsman of the Year award.

### **Non-meandered Waters Update**

Kevin Robling, special projects coordinator, presented a PowerPoint with an overview of non-meandered waters and a status update since the passing of the open waters compromise.

Arden Petersen, special assistant, provided information on continued efforts to develop a proposal for marking requirements on closed non-meandered waters explained the need due to requirements for enforcement.

Commissioner Olson inquired who is responsible for cost of signage vs. buoys.

Robling responded that GFP department funds would be covering the cost of signs and landowners will need to purchase red polyfoam buoys that will cost approximately \$35 as well as the necessary anchors. They plan to present the marking recommendation package next month.

Petersen explained that landowners will be provided a list of vendors and staff will work with landowner on placement so it is done properly and outside of the right of way. Per requirement of statute landowner is required to notify the department.

Robling provided the Commission a draft payment ranking criteria matrix for use in evaluating access being provided along with the status of the fishery. He explained how this would aid in providing consistent offers to landowners dependent upon the rank values of pre-defined criteria. Robling also presented a draft schematic for the regulated recreational use access program which is a secondary option that would allow

for regulated control of the number of recreational uses similar to the controlled hunter access program. Robling explained next steps noting they will continue providing recreational opportunities to resource users while addressing the concerns of the landowners that own the land under the water. Robling and Petersen were available for questions today following the meeting.

### **Strategic Planning Implementation Quarterly Update**

Emily Kiel, communications director, provided an update on the recently implemented strategic plan. She reiterated the mission, vision and values of the department. Kiel explained progress details as we are 9 months into the plan that guides the department in what they do and how they do it. She noted customer service drives the plan. Currently there are 57 priorities for 2017-2018 with 4 completed, 10 ongoing, 43 in progress, 8 initiated and 2 with no progress due to budgetary aspects.

Secretary Hepler thanked staff for their work on the plan. He also noted that the plan aligns with our budget and staff will provide more information to the Commission at future meetings.

### **Website Preview and Project Status**

Kiel introduced Mark Smithers, vice president, and Allyse Steffen with Migrate Outdoors.

Smithers reported progress is on schedule to be completed by December 1 as well as on budget. Progress status, functionality, and provided views of developed pages.

Stephen provided a PowerPoint of the developmental website explaining how the homepage should excite the public to what GFP has to offer and provide a better user experience and will be easier for staff to update. She said focus groups noted licenses, state parks and maps are most frequently used so they are predominate on the homepage with additional activities also posted.

Smithers said research shows 50 percent of GFP audience uses mobile devices so the homepage is set up to scroll down and include all key items.

Stephen also working with licenses and reservation system companies for a seamless process.

### **PUBLIC HEARING**

The Public Hearing began at 2:00 p.m. and concluded at 2:45 p.m. and the minutes follow these Commission meeting minutes.

### **PETITION FOR RULE CHANGE**

#### **Landowner Preference**

Commissioner Peterson recused herself from the petition involving Mr. Ellman's request to reduce the acreage requirement for landowner hunting preference not based on a financial interest but rather that she knows Mr. Ellman personally.

Tony Leif, wildlife division director, presented the petition for rule change for landowner preference. He reminded the commission of the process and options.

Leif explained that the specific administrative rule would be to change the acreage required to receive landowner preference. State statute establishes preference for drawings if farmers actually live on the land. The Commission shall establish the eligibility and the number of licenses for the units. The current established threshold is 160 acres and 50 percent of licenses for each allocated unit. Landowners can get these licenses as the statute links it to the requirement as administrative rule. Therefore, if the petition is passed the number of qualifying landowners would increase substantially and landowner owned land licenses would require a reduction.

Commissioner B. Jensen stated this would clearly have huge ramifications on the licenses.

Commissioner Phillips noted 160 acres has worked well since 1970 and thinks 6 acres is very low

Leif agreed this would be a substantial change.

Commissioner Dennert recalled the hearings years ago that determined that a person owns 160 acres was established as it compensates for destruction caused by wildlife and provides habitat.

Dennert motioned to reject the petition and to have staff craft a resolution that summarizes the reasons discussed for the rejection second by Phillips. Peterson abstain. Motion carried.

Tony Leif presented resolution 17-11 (Appendix B) denying the petition per the Commission's request.

Motioned by G. Jensen with second by Olson to adopt resolution 17-11 denying the petition in regards to landowner preference. Motion carried.

#### **PETITION FOR CLOSURE OF A PORTION OF CATTAIL-KETTLE LAKE (MARSHALL COUNTY) TO RECREATION**

##### **Cattail Land and Cattle Company LLC: Owners – Raymond Anderson; Scott Anderson; Brad Pitzl; Jason Pitzl**

Commissioner B. Jensen acknowledge a petition was received from Cattail Land and Cattle Company LLC dated August 16, 2017 requesting to restrict all types of recreational access to Cattail-Kettle lakes to include, fishing, big game hunting, small game hunting, trapping, boating, wading, walking and trekking. This petition was made in consideration of HB 1001. Today we are scheduled to finalize our administrative rules that allow landowners to petition this Commission to consider closure of Section 8 lakes. Due to the fact that these rules are not finalized and based upon the petitioner's request, we are going to schedule this petition for a contested hearing for our meeting at Brookings, SD on November 2, 2017. However, this does not preclude the public to

give testimony today to voice their opinions during our open forum portion of this meeting. We will take this public testimony, as well as any other public comments we receive from now until then, into consideration at our November meeting when making our decision.

Motioned by Olson second by Sharp TO SCHEDULE THE PETITION FOR CLOSURE OF A PORTION OF CATTAIL-KETTLE LAKE (MARSHALL COUNTY) TO RECREATION FOR NOVEMBER 2, 2017 GFP COMMISSION MEETING. Motion carried.

## **PROPOSALS**

### **Mountain Lion Hunting Season**

Chad Switzer, wildlife program administrator, presented the proposal for the 2017/2018 and 2018/2019 mountain lion hunting season noting there are no recommended changes from the previous season.

Commissioner G. Jensen requested action be held until prairie lion hunting statistics can be presented during this meeting.

Switzer explained that the plan revision was put in place in 2010/2011 and has expired. The process to move forward with a new plan beginning next week to include a news release and solicitation of public comment via email with review at year end. Then finalize the public involvement process with a 2 year recommendation and new revised plan available Feb/March 2019 that will be presented to Commission summer 2019.

Tom Kirschenmann, assistant wildlife division director, noted no action necessary if changes are not wanted. No change would occur for the next 2 years and the season would follow the current season structure until the management plan is revised.

The Commission chose to not propose any changes for the mountain lion hunting season therefore allowing the current recommendations to continue.

## **FINALIZATIONS**

### **Petition for Landowners with Property in Non-meandered Lakes that are Open to Public Recreation**

Jon Kotilnek, staff attorney, presented the proposed rule and restructure of the rule to be user friendly. Kotilnek walked the Commission through the new rule that is process driven. He provided the Commission a process chart walking through the sets from submission, scheduling of a contested case hearing, public notification, contested case proceeding for decision. The rule protects the public right to due process.

Commissioner Sharp asked if all petitions to public waters are contested hearings

Kotilnek confirmed that they are per 1.26.1

Leif noted that the administrative rules pertaining to the petition process need to be finalized prior to taking action on petitions for closure of section 8 lakes. He also indicated that the Cattail Land and Cattle Company requested their petition be held until the November Commission meeting.

Motioned by G. Jensen second by Olson TO AMEND THE PROPOSAL TO REFLECT STATUTORY PROCEDURES AS RECOMMENDED BY STAFF

Motion carried unanimously.

Motioned by G. Jensen second by Boyd TO APPROVE THE NEW RULE ESTABLISHING A PROCESS ALLOWING PRIVATE PROPERTY OWNERS TO PETITION THE COMMISSION REQUESTING RESTRICTED RECREATION USE OF THE WATER OVERLYING THEIR PROPERTY AS AMENDED. Motion carried.

### **Swan Lake Boating Restriction**

Leif presented the finalization to the Swan Lake boating restriction noting the departments' recommendation to not take action at the present time and consider a later date when it can be part of a large discussion around refuges and boating restrictions.

Secretary Hepler thanked the public for submitting comments and noted timing wise these are difficult issues. He explained that in the passing of HB1001 the legislature was clear that the compromise is twofold as there are number of lakes with longstanding history of recreational use and the public has opportunity and landowner has right to contest and mark their property. Questions arise about trespassing and signage which GFP regional staff continue to work on. Then you add whether or not to have some designated as a refuge and has there been restriction in the past? Commissioner Sharp asked the department to research and bring information to make informed decisions. MN is having similar discussions, is there anything they are doing that is applicable to us? Number of different options. Take the petition as straight rule making and vote, ask petitioners to resubmit under criteria, or postpone with matrix in November.

Rocco Murano, senior waterfowl biologist, noted the question being asked is whether a resting area would have a biological impact? He said that unfortunately there is little information on this especially in the Central flyway. The Mississippi flyway with large concentrations of waterfowl in certain areas did not quantify an effect on waterfowl and note that they would likely be an effect by disturbance. In this situation we are discussing field feeding ducks staging areas and lakes or permanent wetland which are not limited nor are food resources.

Mike Klosowski, regional supervisor, said there have been trespassing issues at Swan Lake in the past and as for trespass and wildlife violations this is average based on a lake of this size. He noted they are currently working on signage to correct issues based on water levels that have cause confusion and said that per conversations with the Clark County States Attorney the department has his full support and we have worked with him on prosecution of violations in the past. Klosowski said the boating workgroup has been looking at current rules and a review of all rules so they will make



sense for all bodies of water across the state. Currently there are ten different types of restrictions. The workgroup will work with staff and the public to evaluate these restrictions and provide some uniformity that will allow us to clearly articulate why restrictions are in place.

Leif concurred that there is inconclusive evidence and little impact from biological side saying it comes down to a trade-off of opportunities and enhanced alternate opportunities.

Commissioner Sharp appreciates staff providing a point of view, but we only have antidotal evidence. He said the Commission hears comments that boats do not affect the hunt, but that is the reason why people say they had a bad hunt. He personally believes it makes sense to have roosting areas in larger bodies of water that do not freeze early. Sharp asked staff for 10 -12 lakes that would be ideal for designating roosting areas based on necessary information for a consistent approach. He said there needs to be clear boundaries on trespassing to slow it down. Sharp recommended tabling the decision to study the issue for the next 6-10 months to be comfortable about making a decision.

Commissioner Phillips stated that trespassing is one of the issues taken serious and is a problem across the state. He recommended working with the Attorney General's Office.

Motioned by Sharp, second by G. Jensen TO TABLE THE SWAN LAKE BOATING RESTRICTION UNTIL JUNE 2018 TO BE REPROPOSED AT THAT TIME.  
Motion carried

## **OPEN FORUM**

Vice-Chair B. Jensen opened the floor for discussion from those in attendance on matters of importance to them that may not be on the agenda. No comments were received.

## **DIVISION OF PARKS AND RECREATION**

Bob Schneider, parks and recreation assistant director, presented Good Earth State Park with the 2017 Ney Lundrum Park History Award in recognition of the research and presentation of the site's history through the development of Good Earth State Park at Blood Run and visitors center that tells the story and preserves a portion of a larger historical and culturally significant site. The award that was presented by the National Association of State Parks Directors.

## **SDSU Conservation Planning and Park Management Major**

Dr. Michelle Dudash, SDSU, provided information on the undergraduate programs within park management noting that it is one of three programs in conservation planning across the country. She shared information on the coursework, diverse major electives and park administration and management specialization.

Secretary Hepler thanked Dudash and noted how the department's strategic plan blends the divisions within the department and inquired if there are courses also for wildlife management.

Dudash responded that fisheries and upland game are all electives.

Hepler recommended that these courses be required and offered GFP staff to provide lectures.

Commissioner Sharp asked if the course curriculum lined up so the spring course work provides students practical training for summer internships.

Dudash indicated that each spring freshman students spend a week in field working on techniques at Oak Lakes which is provided by faculty and graduate students.

### **Review of Park Fees and Recommendations**

Schneider informed the Commission that parks and recreation will bring fee changes as proposal in October. He explained that increases would generate \$580,000 approximately 3 percent revenue increase to cover inflationary costs in operating budget and capital development. He detailed recommend adjustments to camping fees noting the last increase was in 2014. Camping fees for modern campgrounds, meaning those that have individual camp pads, campsite electricity, shower houses, flush toilets and sewer dump stations, are broke into 3 categories prime, preferred and modern. Prime campsites are modern lakefront campsites at Lewis and Clark Recreation Area and Chief White Crane Recreation Area with at rate of \$21 per day, preferred campsites are in campground that has a weekend occupancy that exceeds 80% from Memorial Day to Labor Day with a fee of \$19 per day and modern campsites are in campgrounds that have a weekend occupancy of less than 80% during the summer weekends with a fee of \$17 per day. Parks proposes changing the prime campsite designation to campgrounds that have a summer weekend occupancy of at least 90%. The fee would remain at \$21/day but 22 campgrounds would move from preferred to prime which is essentially a \$2 per day increase. They also plan to propose a \$5 increase in the daily fee for the French Creek Horse Camp in Custer State Park. The extremely popular campground has campsite electricity, a shower house with flush toilets and we are adding individual horse corrals for each campsite with the new daily fee being \$31.

Schneider noted other increases parks intends to propose include a \$5 increase for camping cabins in all parks except the Lewis and Clark complex and Custer State Park. The new fee would be \$45/day, a \$20 increase for the group lodges at Mina Lake and Shadehill Recreation Areas and a \$40 increase for the lodges at Lake Thompson and Sheps Canyon Recreation Areas and Palisades and Newton Hills State Parks. The respective new fees would be \$205 and \$280 per day, an increase from \$300 to \$500 to rent the South Barracks at Fort Sisseton for a weekend and an increase of \$25 to store your catamaran on the beach at Lewis and Clark and Angostura Recreation Areas. The new fee would be \$325 for the summer at Lewis and Clark and \$175 at Angostura.

The final fee change parks plan to propose is to eliminate the \$4 per person park entrance license option. Currently the daily fee for a vehicle, regardless of the number of occupants is \$6. The fee for a single person is \$4. Currently, 73% of those purchasing a daily license purchase the \$6 vehicle permit. He further explained that two-thirds of the new revenue would be derived from changes in the camping fee structure and that in 2016 the nation-wide average price for a similar state park campsite was \$23.43 and the average price for a campsite in our six neighboring states was \$22.00. At \$21 for our premier campsite, we think South Dakota offers a great value.

### **Parks Revenue and Camping Reservation Report**

Schneider provided the park revenue and camping reservation report. The report includes a year to date comparison of revenue by line and August 2017 year to date comparison by district item. Schneider said overall revenue is up 5 percent and explained the motor coach permit increase is due to payment received this calendar year that is typically received in December of the previous year. Visitation is up 1 percent with parks full over Labor Day weekend. He noted volunteers have been inquiring with visitors to Good Earth finding that lots of them are first time users of the parks system.

## **DIVISION OF WILDLIFE**

### **Land Acquisition Projects**

Kelly noted the department is in the process of reviewing current management of department-owned and how additional land acquisitions affect our ability to be effective with our management. Until this evaluation is complete the department will not be pursuing additional new acquisitions besides what is currently being worked on. Dennert inquired why the department does not seek bids for grassland leases. He also requested that soil ratings to be added to land acquisitions proposals.

Coughlin replied that grazing leases are normally offered to previous landowners or neighbor since there are special situations that are not available every year. He also acknowledged that soil maps could be included and will also be a component added to the process used when evaluating land.

### **North Sanborn GPA**

Paul Coughlin, habitat program administrator provided a request to acquire the North Sanborn GPA Inholding Property located in Sanborn County. The property consists of 1.13 acres to be utilized as a game production for wildlife habitat management and public hunting access

Motioned by Olson with second by Boyd TO ADOPT RESOLUTION 17-10(Appendix A) AUTHORIZING AND CONFIRMING PURCHASE OF 1.13 ACRES IN SANBORN COUNTY. Motion carried unanimously.

Coughlin also provided the list of proposed land acquisitions projects in early development including the Tobin/Tvinnereim Trust property inholding consisting of 783 acres in Day County and the Northeast Clark County property consisting of 174 acres.

### **Elk Contingency Licenses**

Tom Kirschenmann, wildlife division assistant director, provided info on the elk management plan process and noted that one of the tools in the plan is elk contingency licenses that will be reviewed annually.

Andy Lindbloom, senior wildlife biologist, presented a PowerPoint on the elk management plan noting objectives to manage elk for biological and social acceptance of elk populations in each unit as well. He further explained strategies to evaluate environmental and range conditions for impacts from drought, wild fires, etc. to determine if harvest management strategies are appropriate for the range conditions. Harvest management strategies include allocation of sufficient antlerless elk licenses. Contingency licenses are issued by the Commission when summer range conditions dictate an adjustment in harvest management is necessary. Lindbloom then provided information on elk licenses for 2016 and 2017 and explained the USDA NRCS forage production prediction model to be used in the decision to issue elk contingency licenses.

Motioned by Phillips, second by G. Jensen TO NOT ISSUE ELK CONTINGENCY LICENSES. Motion carried.

### **Mountain Lion Population Update/Status**

Lindbloom provided a PowerPoint on population management and potential trend indicators which include observation reports, documented mortalities, mortality density, hunter harvest and biopsy darting DNA analysis. He said that human-caused lion mortalities with comparison to Wyoming showing a decreasing trend moving closer to the threshold. He provided a hunting season summary with 2,561 licenses sold last year and 30 lions harvested. Lindbloom explained DNA sampling by biopsy darting process indicating they collected 63 samples all sent in for genetic testing taking 578 hours. He said population estimates indicate a total of 230 adults/subadults to see an increase to 300 which is considered stable to increasing

Commissioner G. Jensen: inquired about prairie harvest by hounds.

Lindbloom will follow up with statistics.

Switzer said the 12<sup>th</sup> season has been completed with good trend data, but it is important to use all data collectively and therefore does not recommend a change at this time.

### **Deer Licenses and Season Structure Workgroup Report**

Kirschenmann provided a briefing on the social considerations from the deer management plan. He said social consideration have been refined into five main priority items consisting of license allocations, nonresident archery licenses allocations, season end dates, limited access units, mule deer management specifically in the black hills. Next steps will be to gather additional information on these five items to be addressed noting the licenses allocation will be the most difficult and will take longer.

Robling said the goal is to provide a higher probability to draw a first choice deer licenses. Explained that input was collected in the past through hunter and landowner

surveys which typically indicated no change. Staff are now taking a new approach that will have direct involvement with the public. The first step is an internal development team to create up to 3 potential alternatives to be presented to deer stakeholder group for feedback. Focus groups will be utilized to see how they would respond and the options they would select then simulated license draws. Due to the time to collect data and feedback recommendations will not be brought forward until 2019.

Kirschenmann stated that if the department implements a new structure or approach there would need be changes made to programing that will be a time factor.

Robling reminded the Commission that this is a social issue being addressed and it will not change the number of licenses allocated.

### **Custer State Park Elk Management Update**

Kirschenmann provided an updating beginning with a brief history on Custer State Park (CSP) elk management noting the herd was at a high level at one time, but in recent years has decreased. The plan recommends maintaining a level of 700-800 and the current level is at a range of 450 with 125-150 that are on the southern end of the park. He explained that one of the factors for this is due to aiding Wind Cave National Park in their population objective hoping the herd would move north. Their herd reduction focused on CWD prevalence rate efforts that were at 14 percent. The CSP antlerless season with 20 licenses revealed 16 percent (3/4 animals) with CWD. This raises concerns and indicates a need for management activity to see if this rate truly represents the animals in the area. Staff are working on recommendation to increase additional antlerless licenses on the southern end of the park for this winter with the primary purpose being an adaptive management strategy even though population levels are below the management objective. Kirschenmann will provide additional details will be provided at the October Commission meeting with the proposal.

### **Pheasant Brood Survey Results**

Travis Runia, upland game biologist, presented a PowerPoint on recent pheasant brood survey results. He explained the methods used noting they travel the same 110, 30 miles routes each year starting at sunrise recording the number of roosters, hens and broods. Runia provided statewide trend data for the last 15 years which indicates at 65 percent decrease in pheasants per mile. He explained how drought impacts the pheasant population as does a loss in upland habitat.

### **Monarch Butterfly Conservation Efforts**

Kirschenmann provided a PowerPoint on monarch butterfly conservation efforts. He explained the monarch migration from Mexico to Canada and back as well as the life cycle noting that it is the fourth generation butterfly that migrates back to Mexico for the winter. Kirschenmann also provided data on the monarch winter count from 1994 to 2017 showing a decrease in the population which has prompted the US Fish and Wildlife Service to petition listing the eastern subspecies in 2014 with a decision to be made in 2019. He then explained conservation strategy for each state to develop a plan to be part of a regional plan to develop habitat goals.

### **Division Awards**

Leif presented the Division of Wildlife Teamwork award to the Conservation Officers in the East District of Region 3 in southeastern SD for their efforts to recover the bodies of 2 hunters that died while out hunting on Brush Lake in Brookings County.

### **Local Boater Registry around Containment Waters**

BJ Schall, Dan Altman & Shane Bertsch provided the Commission a PowerPoint explaining the need for the local boater registry in efforts to reduce the spread of aquatic invasive species. On August 1 letters were sent to 377 slip holders and only 8 have enrolled as of August 31 so 400 packets were distributed and posted on all message boards in the facility at McCook Lake. They will continue to increase efforts. At Lewis and Clark Recreational Area new handouts were distributed through the park office and new signage has been posted. Staff also provided information on law enforcement efforts beginning in 2016 with boat ramp checkpoint and season opener road checks where they issued 65 citations and 40 written warnings. Now that the public has been informed enforcement efforts less lenient issuing fewer warnings and more citations.

### **Review of Hunting, Fishing and Trapping Fees**

Leif provided the Commission information on hunting, fishing and trapping fees noting the comparable decline in brood counts similar to 2013. He explained that 40 percent of all licenses fees come from nonresident pheasant licenses which will likely decrease to an estimate of 70,000 licenses sold. This required staff to make adjustments in revenue projections. While there is a steady amount of federal funding with decline being minimal the division continues to be conservative in budgeting and spending with a target reserve of 25 percent (12.5 million dollars) of the operating budget with an additional 3 million dollars in reserve from last year. Leif said this will sustain the division with no adjustments in license fees at this time. He provided 20 year history of licenses fees and noted they may need to make increases in the future to maintain the current level of programs and services.

### **Outdoor Education in Southeast SD**

Thea Ryan, visitor services coordinator, provided the Commission an overview of the education programs at outdoor campus east. These programs include the fishing club, step outside and outreach programs, summer campus grad program, outdoor university and eating wild. Jim Henning, park manager and Jen Nuncio, naturalist from Good Earth State Park provided details on park programming in the categories of cultural, natural and recreation. They also noted the special events that have taken place, services groups they work with and upcoming events. Jody Moats, park manager, provided an update on summer programming focusing on summer camps for kids age 5-10 years old and the newly constructed cottonwood playground at the Adams Homestead.

### **License Sales Update**

Scott Simpson, wildlife administration chief, provided the license sales report as of August 31 for all resident and nonresidents for all license types indicating sales are similar to last year at this time, just slightly down. He noted nonmeandered waters have some impact on fishing sales especially for nonresidents. Simpson said 95 percent of resident fishing licenses have been sold for the year. And hopes to see an increase in

the number of 1 day small game licenses sold which will be more definitive come November.

**Solicitation of Agenda Items from Commissioners**

No new agenda items were requested at this time.

**Adjourn**

Motioned by Boyd, second by Dennert TO ADJOURN THE MEETING. Motion carried unanimously and the meeting adjourned at 12:15 p.m.

## Appendix A

### RESOLUTION 17 - 10

WHEREAS, the Department of Game, Fish, and Parks (GFP) has expressed an interest in acquiring real property presently owned by Sanborn County, PO Box 7, Woonsocket, SD 57385, which property is described as:

A strip of land for public highway purposes, sixty-six feet wide, being thirty-three feet on each side of a center line beginning at a point on the north boundary line of Lot One (1) in Section One (1), Township One Hundred Eight (108) North, Range Sixty Two (62) West of the 5th P.M., 437.25 feet west from the northeast corner of said Lot One, thence in a southeasterly direction in a curved line to a point of intersection with the east line of said Lot One, 908.87 feet south of the northeast corner thereof, containing 1.13 acres, more or less, and hereto referred to as the SANBORN COUNTY PROPERTY; and

WHEREAS, said property is to be acquired by and utilized by GFP as a Game Production Area; and

WHEREAS, SDCL 41-4-1.1 requires that before GFP acquires and purchases property, GFP must notify owners of land located adjacent to the property sought to be acquired by publishing notice of the same once in each legal newspaper of the county in which the property to be purchased is located; and

WHEREAS, GFP has published the required legal notice at least thirty (30) days prior to the date of action by the Commission authorizing the intended purchases, which notice included the time and location of the meeting at which Commission action is expected and by giving notice of instructions for presenting oral and written comments to the Commission; and

WHEREAS, the Commission has reviewed any and all comments that may have been received relative to the intended purchase and after consideration of the same, the Commission approves the purchase of said property for use as a Water Access Area;

NOW, THEREFORE, BE IT RESOLVED, that GFP is authorized to complete negotiations for the purchase of the SANBORN COUNTY PROPERTY and execute and consummate an agreement with Sanborn County, acting through its Board of County Commissioners, which is acceptable to GFP to acquire by purchase, at the price of \$2,036.00, the SANBORN COUNTY PROPERTY for use as a Game Production Area.



## Appendix B

### RESOLUTION 17-11

WHEREAS, Craig Ellman of Salem, South Dakota, submitted a Petition to the Game, Fish and Parks Commission (Commission) dated 10 August, 2017, requesting that the Game, Fish and Parks Commission amend ARSD 41:06:01:07 to authorize landowner hunting preference to any landowner, regardless of land size for the reasons more fully set out in the petition (hereinafter referred to as "the Petition"); and

WHEREAS, all members of the Commission have been furnished with and have reviewed a copy of the Petition; and

WHEREAS, the Commission has been advised that a copy of the Petition has been served on all members of the Interim Rules Review Committee and Director of the Legislative Research Council as required by SDCL § 1-26-13; and

WHEREAS, the Commission has been advised that SDCL § 1-26-13 requires that within thirty (30) days of submission of a Petition, the Commission shall either "deny the petition in writing (stating its reasons for the denials) or shall initiate rule-making proceedings in accordance with SDCL 1-26-4.;" and

WHEREAS, the Commission has been advised and is of the opinion that a hearing on the Petition is neither statutorily required nor necessary; and

WHEREAS, the Commission has reviewed and carefully considered the requirements and procedures set out in § SDCL 1-26-13 and the contents of the Petition, including the reasons advanced by Petitioner in support of his request to authorize landowner hunting preference to any landowner, regardless of land size; and

WHEREAS, the demand for licenses to hunt deer in South Dakota far exceeds the supply; and

WHEREAS, the minimum acreage to qualify for landowners to obtain licenses valid only on their own land is linked by state statute to the minimum acreage for landowners to qualify for landowner preference licenses; and

WHEREAS, decreasing the minimum acreage to allow the petitioner to obtain a license valid on his own land would increase the number of eligible landowners, thus reducing the chances that currently qualifying landowners would have to draw a landowner preference license; and

WHEREAS, decreasing the minimum acreage for landowner preference would reduce the number of licenses available to applicants without landowner preference; and

WHEREAS, a 2014 opinion survey of deer hunters determined that deer hunters believed that 160 acres was an appropriate threshold to qualify for landowner preference licenses.

NOW, THEREFORE, BE IT RESOLVED, that the Commission does hereby deny the Petition for the reasons hereinabove stated in this Resolution, which said Resolution as adopted

by the Commission shall constitute the Commission's written denial of the Petition and its reasons therefore.

BE IT FURTHER RESOLVED that the Petition, a record of the Commission's discussions concerning same, and this Resolution be made a part of the Minutes of the Commission meeting at which this Resolution is adopted, and further, that the Department be and it is hereby authorized and directed in compliance with § SDCL 1-26-13 to serve a copy of an extract of that portion of the Commission minutes which pertain to the Commission's discussion of the Petition and its adoption of this Resolution, including a copy of the Resolution, on all members of the Interim Rules Review Committee and Director of the Legislative Research Council with copies also to be provided to the Petitioner, Craig Ellman of Salem, South Dakota.

Public Hearing Minutes of the Game, Fish and Parks Commission  
September 7, 2017

The Public Hearing Officer Scott Simpson began the public hearing at 2:00 p.m. at the Ramada Hotel and Suites in Sioux Falls, South Dakota with Commissioners Cathy Peterson, Mary Anne Boyd, H. Paul Dennert, Barry Jensen, Gary Jensen, Russell Olson and Douglas Sharp were present. Simpson indicated written comments were provided to the Commissioners prior to this time and will be reflected in the Public Hearing Minutes. Simpson then invited the public to come forward with oral testimony.

**Petition for Landowners with Property in Non-meandered Lakes that are Open to Public Recreation**

No oral or written testimony was received

**Swan Lake Boating Restriction**

Darin LaQua, Watertown, SD, president of SD Sportsman Incorporated. Said he has received a fair amount of calls from people who oppose the closure of Swan Lake and feels landowners do not want to see this lake closed in the fall and thinks new legislation allows for adequate habitat.

Chris Hesla, Pierre, SD, executive director of the SD Wildlife Federation, opposed the closure of Swan Lake for many reasons. It is a nonmeandered lake in which 80 percent is public owned which was mostly purchased with sportsman dollars. The area has great boat ramp built by GFP and maintained by sportsman dollars and has been modified to provide ideal public access. With recent changes in the water access law combined with increase in nonresident waterfowl licenses access to good duck hunting has been significantly reduced and this closer would further reduce it. These restrictions will only benefits adjoining landowners and represents a loss to the public. He urged the Commission to defeat this as private land can have waterfowl refuges it doesn't have to be on public land.

Gale Paulson, Sioux Falls, SD, Swan Lake has been put in the same closure category as Reid Lake which is a waterfowl refuge. Not sure they allow boating during waterfowl season near boat dock and parking. Reid Lake boat dock is in a grassland easement which is for protection of habitat for wildlife. The easement says no traffic should be on, over or through the area. Would like someone to look into this.

Ryan Rohre, Sioux Falls, SD, if correct Swan lake is a WPA and information says there must be access to it because it is federal so if it is closed it would need to be done federally. This would be a consideration to keep the lake open.

Terry Sampson, Watertown, SD, the biggest concern is are we opening a can of worms after all the nonmeandered water issues.

Mike Meyers, M&E Land Company, Hayti, SD, petitioner who wanted to make roosting area for waterfowl and control trespassing. Swan Lake is 80 percent water, but not 80 percent of the land around the lake. This is for the benefit of everybody because if there is a roost it will provide more opportunity. If you allow boats they will chase

them off. They do not want to close the lake just the waterfowl roosting area and can still allow hunting and fishing from the shoreline and ice fishing if it freezes by November 1. Just wants to restrict boats from October 20 to December 31. Doing this for the sportsman and will probably benefit as landowner. Only Meyers and Spies are landowners who hunt the area, but hunters can ask the other landowners and will probably be allow access. Boats on the lake push birds to the north of Clark County that cannot be hunted. He urged Commission to pass the petition for sportsman and better duck hunting.

Jerry LaClair, Sioux Falls, SD, 66 years old and lived in SD majority of life enjoying experiences such as hunting and trapping. Has watched it degrade year after year and therefore no long hunts. Says if you want to make this a refuge then do so or make it a roosting refuge and include a buffer zone. If you are going to privatize the lake to benefit people closest to lake then there should be a charge for example \$100 per running foot as this is meant for the public. Geese are not going to leave the water as they get used to boats. It is shooting early that causes geese to leave. People should be able to fish the lake in October as that is a good time for walleye fishing.

Ed Spies, Watertown, SD, petitioner, defined privatization which is the transfer from public to private ownership and control. Swan Lake has 10 landowners 2 are the government and 8 are private. Regardless of the decision made today the ownership remains and it will not be privatized. The water is in public domain and the state has the authority to regulate the water. GFP owns a public shooting area on the south end. Thinks the duck will fly in a 360 degree circle off the lake offering opportunity to all. Intentions are good just want to improve duck hunting. Thinks this will show a compromise and keep landowners from buoying off their waters.

Roger Meyer, speaking on behalf of sportsman. Feel there has been a conflict since Day County issue we do not want a no again. Not about duck hunting it is about the three groups getting together because otherwise landowners say no and nobody gets to hunt.

John Dage, Watertown, SD, has land 4-5 miles away and knows if no ducks on Swan Lake there are none near his home. He and other landowners allow hunters and when ducks get blown off the lake it takes weeks for them to come back. They only have one field and other surrounding farmers have lots of fields. Says ducks need a safe roost so everyone can get a chance to hunt providing opportunity for nonlandowners.

Adam Mertz, Watertown, SD, gets to hunt almost 60 days in the fall as a guide out of Henry. Can echo what Dage just said that if boaters are on the lake the ducks leave the lake. If you shoot the ducks off the lake they go over to the larger bodies of water. It is foolish to hunt ducks on their roost. Says there is talk about taking away the rights of sportsmen, but what about landowners who pay for the land.

Rob Gardner, Webster, SD, Day County landowner noticed this on the GFP website and thinks it makes sense. Doesn't own land on Swan Lake, but does near Webster. Says high water makes places inaccessible, but there is all the walk-in land

everywhere. Seen where the only access to water is through his land and has had to report trespassing to GFP. You get one good hunt then it take forever for waterfowl to come back. They may only go 8 miles away, but how many fields of walk in area to they fly over on the way? Don't burn the water and you will always have a hunt then everyone will get a chance.

Brett Andrews, Aberdeen, SD, emailed, "I support the restriction of boating access on Swan Lake in Clark County from Oct 20-Dec 31. \*By Oct 20 most fall fishing is done with and people have changed their focus to pheasants, deer and waterfowl. \*Outboard motors can annoy and be used to harass resting and loafing waterfowl. With the restriction of boating access on the lake it could create a "refuge like body of water", where waterfowl can be less disturbed. \*The public hunting land under and around Swan Lake could still be hunted by way of walk in access, if an individual or hunting party wanted to hunt the public land of Swan Lake. And it will most likely be a better hunting opportunity if boats (even waterfowl hunting boats) are not scaring the birds off the lake. I think these boating access restrictions between Oct 20-Dec 31 are great for waterfowl hunting. I wish there were more of them throughout eastern SD. Thank you."

Mike Richardson, Fort Pierre, SD, emailed, "I am very much opposed to the proposed closure of Swan Lake during the waterfowl migration. The person petitioning for the closure is nothing more than a greedy landowner wanting the waterfowl on Swan Lake for his personal hunting stock. A friend of mine has had problems with this guy before while he was hunting public land and water on Swan Lake. The landowner was very rude and tried to get him to leave. He wanted the birds on the water to be left alone claiming it was screwing up his field hunting. So we, as South Dakota waterfowl hunters, hunting public land and water, should give up our rights so one landowner can have his own private hunt club on private land? NO WAY. A lot of waterfowl hunters love hunting the water and have limited to no access to private land for field hunting."

Daniel Schneiderhan, Stanley County, SD, emailed, "I am opposed to the petitioned closure of boat traffic on Swan Lake during the fall migratory bird hunting season for the purposes of enriching M&E Land Company and its owners and clients at the expense of the general public. The continual and continuing pressure on government by one group of people to limit the freedom and opportunities of other groups is degrading to the human condition. Carried to its logical conclusion, a few groups would enjoy a fulfilling life at the expense of all of those less fortunate or less endowed by natural ability, education, success in life, or by aspiration. People who live simple lives, whether by choice or chance, have the same rights in this country as everyone else; however, they may be depended upon to be less likely to insist on those rights because they lack the personal tools, drive, and power to do so. The value of the recreational opportunities at and on Swan Lake and places like Swan Lake are not simply the value of the real activities of hunting, fishing, boating, or wildlife viewing. Perhaps the greatest and most valuable aspect of Swan Lake, and places like it, lie in their very existence and in people's knowledge and their imagination's use of the facts of existence. The lake and its potential opportunities exists in the minds and imaginations of people everywhere. These places represent wonderment, possibilities, and potentially peaceful enjoyment of creation. The Swan Lake closure petition is a perfect example of a group of well-endowed people attempting to further constrain those

who, for whatever reason, feel powerless to oppose their own worsening condition in life. This is a selfish act undertaken by selfish people. If this action were simply an act of aggression against the environment, I might still be opposed, but not appalled by it. But these kinds of actions are acts directly against people and their enjoyment of a simpler lifestyle. I understand that protecting a natural resource having great value to a large number of citizens may be an important function of government. What I don't understand or condone is a government that allows a group of people with strong personalities and personal assets to bully it into disadvantaging less aggressive citizens for the sake of political expediency. I am assuming that M&E Land Company somehow profits from revenues derived from waterfowl hunting in South Dakota, in particular the area surrounding Swan Lake. If this is correct, I can imagine that the petitioner(s) would want to lock out activities that may make the lake unattractive for a long term autumn occupancy by masses of migrating waterfowl. However by so doing, they (through the State legal process) would also be limiting the freedom of common citizens to freely recreate on public lands and waters. Under current rules, I believe that Swan Lake provides a certain level of waterfowl hunting experience for the general hunting and fishing public, a public that has some personal access to watercraft that the petitioners wish to prohibit in Swan Lake during the fall waterfowl migration as well as surrounding and extended areas of the state. If the overbearing, large, commercial hunting interests succeed in influencing rule changes that limit public hunting opportunities so that the general and landless public is locked out of access to traditional waterfowling and fishing activities, South Dakota will be providing a poorer life for its residents. This type of continuing degradation of quality of life in South Dakota will create adverse stress in an increasingly stressful state, nation, and world. In conclusion: if there is a real threat to natural, biologic, or chemical regimes in Swan Lake and/or surrounding areas that would be ameliorated by limiting boating activity on the lake for any period of time, I would not oppose the active consideration to grant the petitioner's request for rule change. However, as it appears to me that the probable motives of the petitioner(s) are commercial in nature, and therefore, I am strongly opposed to the granting of petitioner's request for rule change regarding Swan Lake."

Gale Paulson, Clark, SD, emailed, "I would also strongly recommend that the public boat dock be removed and all boating stopped on Reid Lake in northern Clark County—by at least the opening of waterfowl season because this is an important Waterfowl Refuge. Reid Lake has been a very important waterfowl refuge for many years—and becomes even more important as other area sloughs dry up. If geese and ducks do not have a safe place to stay (which is the purpose of the refuge), they will not stay around. I think this boat dock should actually be removed completely because this boat dock is located on public land which is in a grassland easement. This easement states; "The purpose of this easement is to protect the habitat quality of the lands and such land shall be maintained to provide cover, especially nesting cover, and food for a varied array of aquatic, terrestrial, and avian wildlife, particularly waterfowl and threatened and endangered species." A public boat ramp and parking lot for trucks and boat trailers and vehicles coming and leaving the area throughout the day is definitely a violation of this easement contract. In the past, I have personally witnessed boats arriving early in the morning (sometimes before sun up) and chasing geese and ducks off the lake---and this happens throughout the day. I thought the purpose of the

GF&P was to protect wildlife and try to enhance cover. If this public boat dock is not removed, legal action may be initiated (by a few parties)."

Jim Gruber, Estelline, SD, emailed, "Personally i am opposed to any further action pertaining to the closure of swan lake... i think we have enough trouble already with lake closures without adding this into the mix.. it only creates another hurdle for the guides and private land owners to again limit hunting and fishing and encourages fee hunting in the area around swan lake.. leave well enough alone. sounds to me like a grab to create a refuge to attract waterfowl and create excellent private hunting and leasing of the land around the lake for personal gain... i am against the closure of swan lake. in my opinion it only creates a self interest issue which will only be duplicated by more who want their own private pay for play hunting establishment.. many of us like to fish in late october, it is only a lease for profit opportunity for a few.. we had a refuge here at dry lake by lake poinsett for years, and finally game and fish removed the status as it offered no benefit. so, why now create another one when we just removed one? makes no sense..... havent we gone through enough with the lake closure issue already without adding this to the mix... leave well enough alone.. then add in early ice fishing,, how is that going to work, are we going to restrict people from walking onto the ice, or using atvs til dec. 31st. enough"

Larry Baumgarn, Webster, SD, emailed, "My family owns part of Swan Lake and I see no reasopn to close this lake for boating, some of the best fishing occurs while some hunters are trying to shoot ducks and geese. Some of the land owners on swan lake want it closed so they can charge to guide hunts on their private land that surrounds swan lake, they have even gotten permission to hunt on private land they do not own saying it will be just a couple brothers hunting and then show up with 15 paid to guide hunts. Long lake is a few miles to the west and has been closed all along and plenty of waterfowl rest on that body of water, the only problem is M&E land co has no private land surrounding that body of water and no access to guided private hunts. I feel by closing this it gives unfair advantage to those hunters who want to shoot diver ducks from a boat under cover and public access to this outdoor activity, therefore I would like to see this petition declined as they already have Reid Lake and Long Lake for sanctuary for waterfowl, eventually they will want them all closed, please leave some water for those who do not have big money to close water and have land next to closed water for their personal and friends gain. Waterfowl is enjoyed by all residents of SD and should remain that way. M&E land does own all the water on swan Lake and therefore should not be able to petition to close it to those who own a portion and not be able to recreate on our own property."

Doug Butala, Watertown, SD, emailed, "I am strongly against the boating closure Petition for Swan Lake on the dates of October 20th thru December 31st. For the reason this time in the fall is some of the best fishing on Swan Lake for Large walleyes. I as a Licensed South Dakota Sportsman do not want to give up the right to fish that body of water with my boat. As far as the Migratory Ducks and Geese go there is more than enough (hundreds) of area sloughs and large private pot holes for these birds to congregate on and not get harassed. Please vote against this closing for us fisherman in South Dakota that love to fish with our boats in the fall. Thank you"

Doug Christensen, Watertown, SD, emailed, "Please do not allow this petition to be passed! There are far too many reasons not to allow this to pass, the main one being it is a backdoor to try and shut public waters down to the public! Please do not allow this to pass!"

Bob Marquardt, Watertown, SD, emailed, "I am writing this is response to the request by John C Wiles for the M&E Land Company to close Swan Lake for boating from Oct 20 to Dec 31. I would like to go on record in opposition to this request and to remind the commission that they are representative of all the people of South Dakota not just one land owner. Swan Lake has far more acres of land that is owned by the residence of South Dakota than the land that is owned my one Mike Meyer. The public, owners of this land and water should have there rights to use this water and land for hunting and fishing not restricted by the desires of one owner of a small portion of this lake for his own use. By the new law that was passed in the summer of 2017 Mike Meyer can petition to close his property if he so desires. I will also address the reasons for petition: 1. The Exhibit A was not attached with the notice from CF&P so I can only say in response to the majority of land owners lying contiguous to Swan Lake supporting this petition is of no value. The majority of land lying contiguous to the lake are the residences of the State of South Dakota(State of South Dakota and USA land) and why would the public want to give up any more rights to use our own land. 2. Precedence on boat restricted is out dated. These waters should be open for use in the fall with boats. When these waters had restrictions placed on them there was a lot less bodies of water in the NE part of South Dakota and they served a purpose, however the water use by water fowl has changed due many more options. Also at the time of closure passage these bodies did not have fish in them. 3. I do not know what the urgent need to change this status to a rest area because it was not need in the past. I have hunted this lake many times during the 70's and we still have ducks today. 4. Closure of this lake to boats does nothing the enhance the state owned game production areas but makes it more difficult to use this area by limiting access due to minimum maintenance roads that are very often not usable. 5. How does this benefit residence and non-residence fishing opportunity? 7. There is no compromise with this action only another loss to the residence of South Dakota to serve the interest of one individual. In closing I would once again go on record in opposition to this petition, and I would like to remind the commission that the State of South Dakota has a very large vested interest in this body of water and I think it is your duty to protect this interest not that on one individual. Remember lets not privatize public property and resources, and set a bad precedence."

Bill Koupal, Pierre, SD, emailed, "I oppose the restriction of over-the-water access to Swan Lake or in any location in South Dakota. Creating refuges concentrates the waterfowl population. The concentration creates the perfect opportunity for commercial operators. They lease the surrounding fields, exclude ordinary hunters and make profits from the resource. There is no data to show that hunting over water drives birds south. There is, however, data to show that it may move birds to different sloughs or lakes. That's bad for commercial operators with leased fields and customers, but good for hunters who can't or are unwilling to pay. I urge you to vote no on this petition."



Robert Kroell, Aberdeen, SD, emailed, "I think ducks would have a really good lake to rest and recuperate on if no waterfowl hunting was allowed on or around Swan Lake during this time period also. Let's give them a really nice rest."

Terry Amy, Watertown SD, emailed, "I am strongly against the proposal to stop boating on Swan Lake from Oct. 20 to Dec 31 for several reasons. There are plenty of lakes and sloughs in the area for waterfowl to rest on. You have Hegg slough and Long Lake(day county) nearby with little or no boat traffic on them. Also with the migration being later and later each year, Swan does not hold a large amount of waterfowl on it till much later in the year. I hunt and also fish Swan during this time of year and it is more like Nov 15th before decent amounts of waterfowl use this as a roost. This is an obvious attempt by this land company to try and limit access for hunting and fishing for citizens so they can charge more money for people to hunt on their land. Please stop this attempt to limit sportsmans recreation for private interest."

Colton Wientjes, Watertown, SD, emailed, "in regards to the "no boating proposal on swan lake". I fully believe in the refuge programs for waterfowl but this is nothing close to that, Meyers own land and rent land on the west side of the lake and run a waterfowl guide service. They looking to close a natural resource for two months for self-gain. I don't think it's right that the public can't use this body water because they want better waterfowl hunting for their guide service. I love to fish also, swan lake is a very productive fishery for perch and walleyes. We all know fall fishing is some of the best fishing of the year! This is yet another privilege the public would be stripped off, if this passes. Personally, I'm against this proposal. Please vote No"

Ed Nelson, Erwin, SD, emailed, "Dear Sirs: I'm very much opposed on closing ANY South Dakota lake for ANY reason after the fiasco of The Non-Meandering Lake issue last Spring. The water in this State belongs to everyone. As a Fisherman and a Sportsman, I'm opposed to closing a Public Water for ANY reason, private or Landowner. Don't you think the Fisherman have lost too much already?"

Mark Koupal, Mitchell, SD, emailed, "I oppose the proposal to restrict boat access on Swan Lake or any location in SD during a waterfowl hunting season. I have hunted waterfowl and FISHED Swan Lake many times in October and November. The majority of the land around the lake is open to public hunting. This restriction would prevent ethical retrieval of downed waterfowl and once again remove sportsman's access. I see this as another attempt to commercialize hunting and fishing in SD. Please vote no to this proposal!"

Mike Reilly, Huron, SD, emailed, "I see there is a proposal to designate Swan lake in Clark County as a "no boating zone" from Oct. 20 to Dec. 31 at their upcoming meeting in September. At a point in time when there is more water in Clark Country than the land owners know what to do with, this make little to no sense at all. There are all kinds of pot holes for the waterfowl to rest on without restricting Swan Lake. Some of the best fishing takes place during this fall time period, please do not restrict this water."

Bruce Magee, Watertown, SD, emailed, "The boating closure on Swan Lake should not be granted. The lake has been open to boating since well before M and E purchased the land. The only hunting opportunity M and E wish to enhance is their own."

Charles Bot, Brookings SD, emailed, "I am opposed to restricting boating priveledges on swan lake during the waterfowl season. This will set a precedence that cannot be undone. If this passes we will see more people petition to close lakes during the waterfowl season to improve their personal hunting situation. If the state wants to use swan lake as a refuge it should be designated as such and hunting should not be allowed within 1 mile of it's shores."

Kelly Duncan, Tea, SD, emailed, "In response to: "M&E Land Company of Watertown filed a formal petition to the GFP Commission on July 20, 2017, to amend its existing rule for public water safety zones in Clark County. The petition was filed primarily to restrict boating access on Swan Lake to provide a protected rest area for migrating waterfowl during the low plains duck hunting season." This petition will benefit only a privileged few. It is simply another thinly veiled attempt to restrict hunting access by landowners for their own benefit. Surely we have seen enough of this with the "structuring" of certain counties for out of state license draws. Obviously we must also question why this petition addresses the issue of boating safety only during dates that coincide with the bulk of the waterfowl season. The entire thing becomes a bit much for anyone to take seriously. With both Sand Lake and Waubay in such close proximity, has anyone questioned why the petitioners feel the need for more "resting areas"? Flowery statements about boat "safety" and the benefits to waterfowl & hunters alike are poor camouflage indeed for more self-serving intensions. I don't do very well with politically correct statements or verbiage engineered by lawyers to hide true intensions. The issue is simple... private landowners are seeking to increase their harvest of this natural resource with a deceptive petition. They mean to do so by restricting public access to this lake in order augment the "build up" of waterfowl adjacent to their private properties. Even more simply put...they want to shoot more, at the expense of my son and I shooting less. Unless, of course, we pay for the lofty privilege to access their fields. There is a bigger issue at work here. I have friends that have simply quit hunting over the 15 years. Worse yet, they have decided not to introduce their children to the sport. The reason is always the same: Access and cost. A polite request is not enough anymore...money is the bottom line and many simply cannot afford it. Let us not confuse the issue, however. Some landowners insist on payment to access their land. It is their land after all, but that discussion has no place with the issue at hand. However, when hunters of today are not introducing their children to the sport due to cost...our hunting heritage is in danger. Our sport is regularly under siege...not to mention our guns rights. Only support at the ballet box will keep hunting alive. Landowners would do well to remember that they will receive very little support at the polls from former hunters that have nowhere to hunt or that have been priced out of the sport. Why should they show support for a privileged few. Especially with efforts like this to restrict the few public opportunities they can enjoy. Likewise, the support for the more popular conservation groups will also dry up. I can go on...nothing good comes of this. Supporting this petition is just speeding up this issue. I cannot see where anyone would believe it a good thing to restrict access to public hunting opportunities. Even more so when it is done only to enhance the value of hunts conducted on private lands. This would be a slap in the face of the average South Dakota sportsman of average ways and means. They cannot afford lawyers to support them. They simply quit hunting. Do not support this petition. Thank you for your consideration."

Randy Hoff, Watertown, SD, emailed, "I am glad to see that the commission is considering the closure of boating on Swan Lake during the waterfowl season. I am in full support of the closure to boating on Swan lake during the waterfowl season and reopening after the closure of the waterfowl season. I am sure you are aware of the benefits of this boat closure! Some that come to mind are: A. Enhanced field hunting due to birds having a safe place to roost. B. The birds should stay in the area longer due to having the above mentioned safe place. C. The birds will migrate naturally due to weather conditions and other natural phenomenons. They will not get forced out of the area due to boat pressure. D. It is also my belief that the slough hunting will be enhanced because of more birds in the area. As the wind blows hard some of the birds will move off the big lake and move onto smaller more protected sloughs . I am an outdoors person and enjoy fishing as much as waterfowl hunting. The fact of the matter is, I spend much more time fishing than I do waterfowl hunting. This proposed change to Swan Lake boating is a fair proposal to both the Waterfowl Hunter and the Angler. These type of boating restrictions are already working well on some of the local area lakes and should be implemented on Swan Lake as well."

Jeffery Liudahl, MD, Grenville, SD, emailed, "I have read the petition submitted by M&E land company(Mike Meyer and Ed Spies) to repeal and replace ARSD 41:04:02:12 to create a no boating zone on Swan Lake, Clark County, SD from Oct.20-Dec.31.This petition basically will establish a waterfowl refuge on Swan Lake that will benefit cornfield mallard hunters like M&E land company and their cronies.It will exclude diver duck hunters,like myself,along with late season fisherman.I have hunted diver ducks on Swan Lake for over 50 years.I note that this petition was filed with reasons listed including enhancing hunting opportunities on game production areas and public lands surrounding Swan Lake.Maybe I am missing something,but I don't see how that enhances my diver duck hunting and that of other hunters.Does the SDGFP plant corn on these public areas or game production areas for late season mallard hunting by the public?? I would encourage the SDGFP Commission to reject this petition as it is not in the publics best interest.Thank you"

Scott Hillesheim, Springfield, MN, emailed, "As a non-resident waterfowl hunter last season our group struggled to find ducks near where we usually hunt which is west of Aberdeen. The sloughs that normally hold numbers of birds had all but dried up, which is what I also suspect this season. We found a great bunch of ducks in the Webster area but it is all but impossible to obtain permission to hunt the land in that area. We thought we found an awesome niche in hunting Swan Lake. We load the boat with decoys and drive that to the hunting spot while the others walk to it. The boat aids in setting decoys and picking up birds that were shot. Seeing this possible ban really made us feel dejected. Our thought was Reetz lake, just down the road, was a lake the birds could use a resting area. What if we compromised and allowed boats to ONLY set up decoys and retrieve downed birds? The boats would help get every single duck shot into our bag. If we shoot one and don't retrieve it, it counts as our limit and the meat would not go into the freezer."

Tim Amy, Watertown, SD, emailed, "I am writing to say I am against the closing of Swan Lake as of October 20th . This is lake is mostly public (own by people of SD) and gives us regular folks an opportunity to hunt ducks, geese and to fall fish. The birds

have plenty of water to rest on in the area. Hegg lake is to the EAST, Long Lake to the NW. If you let this happen you are letting BIG MONEY win again. Please say no to this.”

Tom Fuller, Sioux Falls, SD, emailed, “I strongly encourage you to reject the petition to close boating access on Swan Lake in Clark County during the prime late season fishing season and duck hunting season. While I totally respect the petition process M&E Land company is legally following, it saddens me that valuable Commission time will be consumed with deciding something that makes absolutely no sense for the broader fishing and hunting public that you so well serve, and is totally a move to benefit an extremely small group that is privilege enough to field hunt areas close to Swan Lake. I, like many of my friends, am an avid fisherman and hunter that truly enjoy living in South Dakota and enjoying our great public resources. I have had the opportunity to enjoy both great late season fishing and duck hunting on Swan Lake by completely following the rules and regulations of South Dakota and by using my boat. I can only assume it is the same group of local field hunters that have put this petition together that regularly monitors the boat landing at Swan Lake and routinely intimidates and trash talks anyone who tries to legally access Swan Lake by boat in the fall. Clearly this is illegal and allowing this petition only solidifies their poor behavior. There are only so many places average guys like me with limited resources can access to hunt. That generally includes our public hunting areas like Swan Lake. There are great access points and an island owned by the State of South Dakota, that are best utilized by boat and this restriction would eliminate one great place to hunt, let along stop any late season fisherman from utilizing this great public resource. Please vote to keep Swan Lake open to the general public.”

William Meyer, Watertown, SD, emailed, “I am for the closure of Swan Lake from October 20 to December 31. This will create a safe haven for waterfowl and improve the waterfowl hunting for everybody that hunts the area.” George Vandell, Pierre, SD, emailed, “I am opposed to the proposed petition to restrict fall boating on Swan Lake for the following reasons: 1) Swan Lake is a non-meandered lake of which some 80% is publically owned – much of it by our Wildlife Division as a GPA. 2) GPAs were purchased with sportsmen (women) funds, are managed and maintained with these funds and the annual property taxes are paid by sportsmen. 3) This water has been historically used by both hunters and anglers, especially lately with the high water levels. 4) This area has a good boat ramp. It has been modified to provide ideal public access to an area open to public access. 5) Good public access, especially to waters with good duck hunting and fall fishing is very limited in SD. Wildlife Division staff work hard and spend significant funds to secure and develop this type of access. 6) With recent changes to state water access law combined with increases in nonresident waterfowl licenses, access to good duck hunting has been significantly reduced this year. 7) These proposed boating restrictions will eliminate both good hunting and good fishing at a time when access is at a premium. 8) This restriction closes access on public water to only benefit an adjoining private landowner. This may be a win for the adjoining landowner but it represents a great loss to the public – on an area they currently have good access to and one they bought, paid for, manage and pay taxes on. In summary this proposal sets a horrible precedent – restricting hunting access on a GPA only to exclusively benefit an adjoining private landowner. It is a bad idea and needs to be killed. I urge you to vote no on this bad petition.”

Tim Brown, Watertown, SD, emailed, "I agree with the proposed closure to give migrating waterfowl a place to rest on Swan lake. Thanks for your time."

Jerry Larsen, Sisseton, SD, emailed, "I would like your careful consideration before adopting a policy for temporary closure of any public waters. You will be opening up another can of worms that will be a nightmare for the GFP as well as anyone who has land away from the closed areas that normally draws ducks or geese in the fall. I am sure everyone who has private land around a public water would love to have their own temporary refuge, even if they don't hunt Or fish!!"

Glen Ekeren, Volin, SD, emailed, "I am totally opposed to the closing of public access to Swan Lake or any other public lake for that matter. Thank you for your time!"

Reg Lindholm, Webster, SD, emailed, "I would ask that you vote for non-approval of the current petition by the adjoining land owners on Swan Lake that would restrict public access by eliminating boating access from October thru December to establish a waterfowl sanctuary. My reasoning for this request is as follows: 1) Swan Lake is a non-meandered lake of which approximately 80% is publically owned – much of it by our Wildlife Division as a GPA. 2) GPAs were purchased, managed and maintained with sportsmen funds. In addition, it is my understanding that the annual property taxes are also paid with sportsmen's funds. 3) Historically, Swan Lake has been used by both hunters and anglers. 4) Swan Lake has a serviceable boat ramp located off Highway 25 allowing ideal public access to an area open to the public. 5) Good Quality public access, especially to waters with fall waterfowl hunting and fishing is limited in South Dakota. Wildlife Division staff expended significant human and financial resources to secure and develop the access on Swan Lake. 6) With recent changes approved by the South Dakota Legislature to state water access law, combined with increases in nonresident waterfowl licenses, access to waterfowl hunting has been significantly reduced this year. 7) These proposed boating restrictions will eliminate both public hunting and fishing on Swan Lake at a time when access to such waters is at a premium. 8) This petition request appears to close access on public water to primarily benefit adjoining private landowners. Thank you for your consideration of my views."

Doug Block, Watertown, SD, emailed, "I note that the commission is requesting public comment on the petition to close boating on Swan Lake during the low plains duck season. The representation by the GF&P in the notice to the public is worded as such to strategically suggest approval of the adjoining landowners petition somehow will provide a benefit to the public waterfowl when in fact absolutely no evidence is even attempted to support that representation. That GF&P language is, "To provide a protected rest area for migratory waterfowl during the low plains duck season". This is nothing more than yet another example of landowners of adjoining nonmeandered bodies of public water attempting to legitimize their personal control over not only the public water, but with the petition, their control and private benefit of public waterfowl. While certainly the public has affirmed hunting as an important and legitimate tradition, not all SD residents view it is necessary to kill the waterfowl to find value in their existence. I for one have a long history of both hunting waterfowl and as I age, much more enjoy quietly canoeing among them during the peak of their annual migration. I can very much appreciate that at times power boats under the control of less than scrupulous operators can and do needlessly harass the waterfowl on the water much to

the disdain of the adjoining landowners attempting to kill the very birds they are supposedly petitioning to "protect". If the petitioning landowners and the GF&P are truly so interested in providing a "protected rest area" for the waterfowl in this specific area than perhaps they should concurrently agree not to hunt the adjoining lands. If powerboaters are indeed harassing the waterfowl, than certainly they should be prosecuted. However, as with most such examples, it is a very few minority that are causing the problem yet the knee jerk reaction is to penalize the vast majority of the public that otherwise enjoy the public resource in harmony with the law, the landowners and frankly the waterfowl. Further, if the commission approves this thinly veiled petition, precedence will be set and one can only expect many further such petitions to legitimize control of a public resource solely for the benefit of the landowners. (residents or otherwise) I encourage you to deny the petition as drafted, change the misleading representation by the GF&P in the petition notice and also to consider that the petition is incomplete in that it incorporates an Exhibit A therein as a listing of the majority of the adjoining landowners when in fact it does not include that listing or even who exactly are the stakeholders behind the petition. I am formally hereby requesting a copy of said referenced landowners and as available, who exactly are the stakeholders of the petitioner. Thanks for your consideration"

Michael Schaefer, Pierre, SD, emailed, "I support the Swan Lake boat closure petition"

Jeff Clow, Harrisburg, SD, emailed, "Please vote NO on this petition. Swan Lake is largely publicly owned and closing this lake will not benefit most residents of South Dakota only a few land owners. Fall is a great time in South Dakota to enjoy boat fishing and on-the-water waterfowl hunting."

Steven Horning, Henry, SD, emailed, "I am a farmland owner who hunts and fishes on Swan Lake. I do not have land on Swan Lake, but own land 2 Yi miles from Swan Lake. I have had numerous conversations on this subject including talking to the petitioners. Besides the petitioners, only two of approximately 90 people that I have spoken with are in favor of this proposal. On the south side of Swan Lake some duck hunters use their duck boats to put out decoys in the water. Since the water is too deep to use waders they go to the land to hunt the blue bills. If this proposal is accepted I predict that the land owners on the north end will have most of the ducks come to them. This would be very good for the land owners. I can envision the non hunting land owners leasing their land out if the ducks go as the petitioner's request. This leaves me to the non land owning duck hunters. The ducks will go to the private land and since there is a lot of public land on Swan Lake, they would be the big losers. We need non land owning duck hunters. Please do not privatize Swan Lake."

James Horning, Watertown, SD, emailed, "The closing of Swan Lake to the public is an outright ego trip. This would open up the lake to a potential commercial adventure limiting hunting or fishing to those willing to pay. This would also violate the rules re the stocking of fish which has been done in Swan Lake both in 2006 and 2007 as stocking is restricted to bodies of water that are open to the public. This might have a domino effect on some of the other lakes in SD. All of this makes the situation worse due to the nonmeandered water issues. I urge you to deny the request to close Swan Lake for the sportsmen and sportswomen of SD. I thank you for your time."

Kelly Cotton, Rapid City, SD, emailed, "Finally, some common sense to enhance waterfowl hunting in the glacier lake area. I was born and raised on a farm in that area and have always hunted waterfowl in that area. I have never understood why the GF&P has not restricted boat traffic on certain lakes during waterfowl season. I have always thought that having boat restrictions on certain "staging" lakes in the area would enhance waterfowl hunting greatly. Common sense tells you that waterfowl need a body of water to rest on. Having boats harassing waterfowl while they are trying to rest just drives them out of the area. I have to thank these gentlemen for giving their time and money to bring this issue to the GF&P commission's attention. It's a start, but in my opinion more lakes need to be restricted in that area. Let's make hunting for the majority a better experience and stop catering to a handful who want to chase waterfowl in a boat. Please vote in favor of this petition."

Scott Hed, DeSmet, SD, Dawn Pesicka, Sioux Falls, SD, Jon Duesterhoeft, Sioux Falls, SD, Zach Pawlowski, Alcester, SD, Jesse Kurtenbach, Deadwood, SD, Kevin Wilmes, Sioux City, IA, Ashley Kurtenbach, Deadwood, SD, Jon Deruyter, Tea, SD, Michael McKnight, Sioux Falls, SD, Paul Ritten, Spearfish, SD, Kait West, Brighton, UT, Clint Hay, Brookings, SD, Derek Garner, Sioux Falls, SD, Daniel Buresh, Madison, SD, James Zeck, Sioux Falls, SD, Jay Hotchkiss, Brookings, SD, Adam Nichols, Sioux Falls, SD, Kyle Kaskie, Aurora, SD, Mark Miller, Rapid City, SD, Brian Bashore, Sioux Falls, SD, Doug Nelson, Chamberlain, SD, Randall Schleuter, Dell Rapids, SD, Jake Worthington, Spearfish, SD, Thomas Novak, Sioux Falls, SD, Terry Lee, Madison, SD, Sean Fahey, Rapid City, SD, emailed, "Dear South Dakota Game, Fish & Parks Commission: South Dakota sportsmen urge you to stand with us in maintaining traditional public access to Swan Lake by voting no on the proposed seasonal closure, which would set a dangerous precedent of allowing neighboring private landowners to create a private hunting refuge on public waters. 1) Swan Lake is a phenomenal public waterfowl hunting and fishing destination that has been enjoyed by generations of sportsmen. Approving this petition would allow a few neighboring private landowners to rob this public opportunity from future generations of sportsmen. 2) Through sportsmen-generated funds, Game, Fish and Parks has purchased more than 75% of Swan Lake, which it manages as a Game Production Area. Allowing private individuals to privatize access on publicly financed waters is both legally questionable and socially wrong. 3) Game, Fish & Parks has made incredible investments to facilitate hunting and fishing access on this lake, though the installation of a boat ramp and purchase of property around the lake. Limiting public access during peak migration is not in line with the original intent of these investments or traditional management goals. 4) Game, Fish & Parks has an obligation to manage our public wildlife and waters to benefit the public to the greatest extent possible. This petition would benefit a few and be a loss of opportunity to many. Thank you for your work to sustain our public hunting and fishing opportunities."

### **Elk Contingency**

No oral testimony was received.

Skip Guindon, Lead, SD, emailed, "As I would like to apply for & draw a antlerless Elk tag, as I have them in my yard everyday here on O'Neal pass, the Elk are not the problem for the lack of grass / feed. It is the cow leeses! They have free roaming and

the ranchers have a cheap feed source. I was very disappointed last year when the cows grazed the land that Rocky Mtn Elk set aside for elk feed..not the cows.”

**Land Acquisition – North Sanborn GPA**

No oral testimony was received.

The public Hearing concluded at 2:45 p.m.

Respectfully Submitted,

A handwritten signature in black ink that reads "Kelly R Hepler". The signature is written in a cursive style with a large, looped initial "K".

Kelly R. Hepler, Department Secretary



**SOUTH DAKOTA GAME, FISH & PARKS**  
523 East Capital  
Pierre, SD 57501  
Chris.Petersen@state.sd.us  
(605)773-3396



### REQUEST FOR LISTS OF LICENSE HOLDERS

Type of List Requested Trapping, hunting, Fur Buyer  
Number of Licenses in list All

Name of Person, Entity, or Organization requesting list:  
Greenewald Fur & Wool Co.

Address of Person, Entity, or Organization:  
304 E Avon St.  
Forreston, IL 61030

Purpose for which list will be used:  
Advertising and sending out route Schedules

The sale of lists by the Department of Game, Fish & Parks is authorized by SDCL 1-17-1 and ARSD 41:06:01:04, 05 and 06. A fee of \$100 per thousand names will be assessed for the sale of this list, or a minimum of \$100 whichever is greater.

Names will be provided on self-adhesive mailing labels unless otherwise specified. Unless requested and approved as part of this request, the license list will not include anyone under eighteen years of age. Names are for one-time use only and are to be used only by the person, entity or organization approved per this request.

[Signature]  
Authorized Signature of Purchaser

8/21/17  
Date

\_\_\_\_\_  
Date of Commission Action

**Comes, Rachel**

---

**From:** Bradley Tisdall <Sdmuleskinners@aol.com>  
**Sent:** Tuesday, September 19, 2017 7:58 PM  
**To:** Comes, Rachel  
**Subject:** Petition for Rule Change

## Petition for Rule Change

**First Name:** Bradley

**Last Name:** Tisdall

**Address:** 4821 hickory Dr  
Rapid city, SD 57701

**Phone Number:** 6057866101

**Email Address:** [Sdmuleskinners@aol.com](mailto:Sdmuleskinners@aol.com)

**Rule Identification:** 46:06:61:06 (5)

**Describe the change you are seeking:** Remove the restrictions of the use of hounds on the public land outside the Black Hills Fire Protection District

**Explain the reason for the described change:** Dogs are allowed to hunt pheasants raccoon Bobcats kites we would just like the same four mountain lions. Land owners would like us to be able to chase on to the public land also.

**Comes, Rachel**

---

**From:** Bradley Tisdall <Sdmuleskinners@aol.com>  
**Sent:** Tuesday, September 19, 2017 8:02 PM  
**To:** Comes, Rachel  
**Subject:** Petition for Rule Change

## Petition for Rule Change

**First Name:** Bradley

**Last Name:** Tisdall

**Address:** 4821 hickory Dr  
Rapid city, SD 57701

**Phone Number:** 6057866101

**Email Address:** [Sdmuleskinners@aol.com](mailto:Sdmuleskinners@aol.com)

**Rule Identification:** 46:06:61:06 (7)

**Describe the change you are seeking:** Remove the wording must take the first legal lion treed

**Explain the reason for the described change:** This would allow the release of some young lions that fall into the category of legal Lions not having spots and not being lactating but they are still young lions and would be better to let them go to live for one more year. This will also help with sustaining the lion species even in Custer State Park as the line numbers have decreased to a manageable number

**GAME, FISH AND PARKS COMMISSION ACTION  
Proposal**

**Public Waters - Nonmeandered Waters**  
Chapter 41-04-06

<b>Commission Meeting Dates:</b>	<b>Proposal</b>	<b>October 5-6, 2017</b>	<b>Rapid City</b>
	<b>Public Hearing</b>	<b>November 2, 2017</b>	<b>Brookings</b>
	<b>Finalization</b>	<b>November 2-3, 2017</b>	<b>Brookings</b>

**Department Recommendation**

**NEW RULE.** Nonmeandered water closures shall be indicated by signs or buoys.

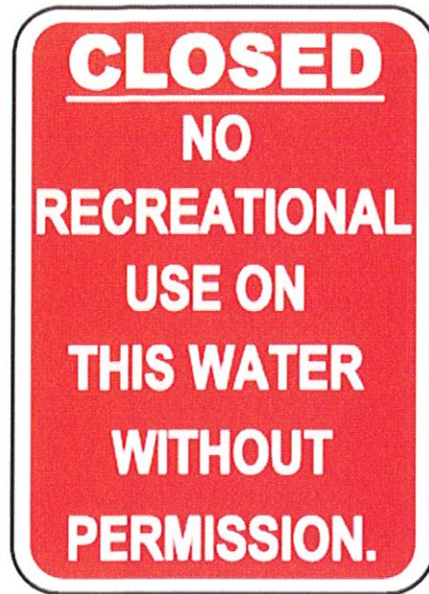
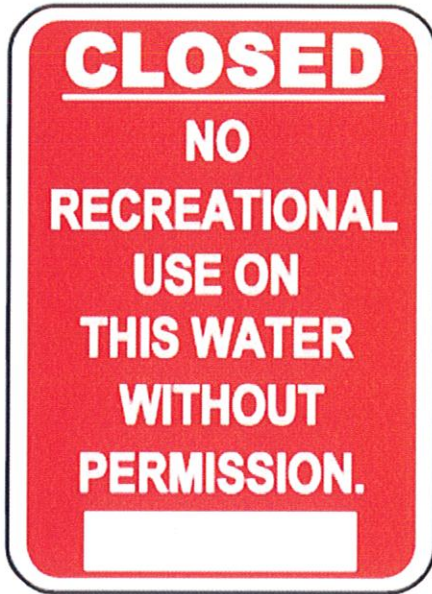
1. Nonmeandered water closures shall be marked with buoys or Department-supplied signs.
2. Signs and buoys must be placed no further apart than 660 feet.
3. Signs and buoys shall be installed so they are conspicuous.
4. Buoys shall be of polyform design.
5. Buoys shall be red with contrasting 3 inch minimum letters stating: "Closed".
6. Buoy size shall be a diameter of not less than 14.5 inches and a length of not less than 19.5 inches.
7. Signs and buoys are to be installed, removed and maintained by the owner or their designee of the private property.

**SUPPORTIVE INFORMATION**

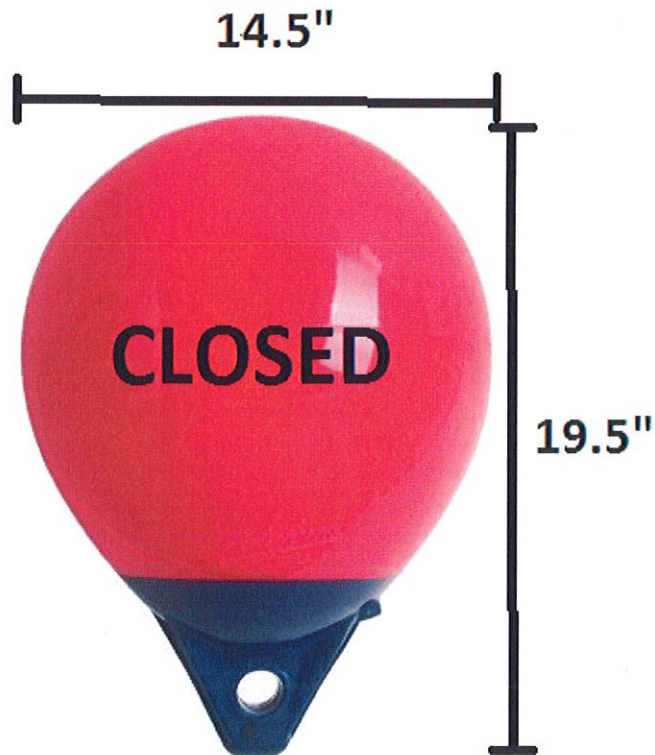
SDCL 41-23-9 (HB 1001) requires the GFP Commission to establish specific standards for markers used to indicate closure of nonmeandered waters to recreational use. During this process the Commission shall consider the cost and burden of compliance by the owner of private property against the visibility of the markers to the public.

Any landowner who wishes to close the water overlying their flooded land on a nonmeandered waterbody must mark the water as being closed to recreational use and notify the Department within a reasonable time that they have done so. The restriction may include all recreational use or the landowner may choose to restrict only some types of use (e.g., hunting or fishing). Any landowner who wishes to restrict access on a Section 8 nonmeandered lake must petition the GFP Commission to request such closure as outlined in 41-04-06. The Commission may grant in full, part or deny the petition. Access may be granted to a closed area through permission of the owner of the inundated land.

**APPROVE** \_\_\_\_\_ **MODIFY** \_\_\_\_\_ **REJECT** \_\_\_\_\_ **NO ACTION** \_\_\_\_\_



12" X 18"  
HIGH INTENSITY REFLECTIVE SHEETING  
WHITE LETTERING WITH RED BACKGROUND



MINIMUM SIZE: 14.5" X 19.5"  
RED IN COLOR  
CONTRASTING 3 INCH LETTERING: "CLOSED"

## Marking Recommendations for Nonmeandered Water Closures



### • Buoy Preparation Recommendations

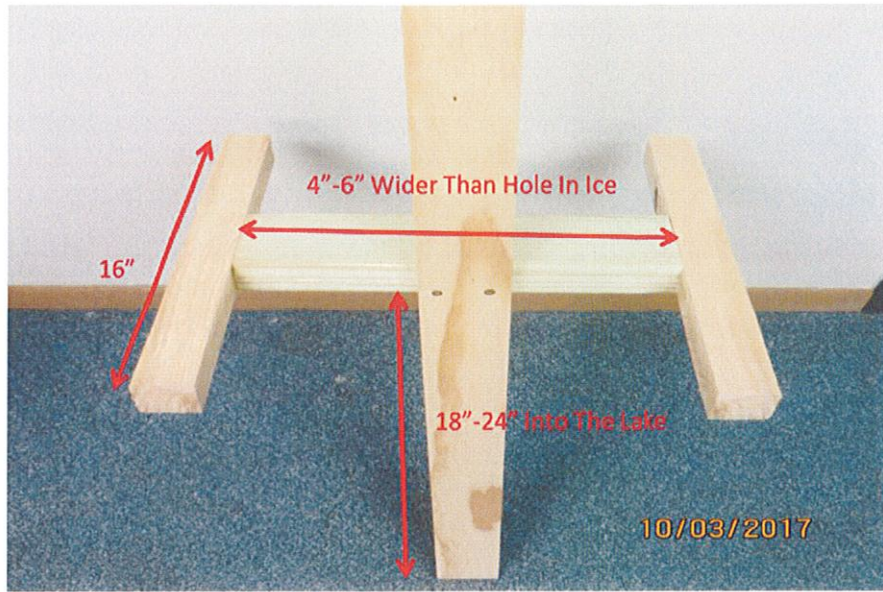
- Marking "CLOSED" on buoys
  - Use permanent marker or black spray paint using a stencil
  - Attach two 6 inch pieces of reflective adhesive tape



- Anchoring
  - Standard 8" or 10" construction (cinder) blocks
    - 8" block weighs approximately 36 lbs
    - 10" block weighs approximately 46 lbs
  - Chain or anchor line rope both work well for connecting buoys to anchors
  - 3/16" chain will result in increased longevity and is easily fastened with bolts
  - 3/8" anchor line rope is a good alternative but can fray over time
- To ensure buoy placement, keep slack in anchoring chain/line
- Example: Placing an anchor in 8' of water should have approximately 10' of chain/line

### Ice Marking Recommendations

- Attach Department provided sign to a 6-7'- 1"x3" furring strip board
  - Recommend the bottom of the sign be placed at 48" above the ice for visibility
  - Recommend using 2"x 4" and 2"x 2" boards for wooden support stand construction
- Ice conditions can vary greatly, please use caution
- Drill hole in ice and leave slush in hole



**GAME, FISH AND PARKS COMMISSION ACTION  
PROPOSAL**

<b>Commission Meeting Dates:</b>	<b>Proposal</b>	<b>October 5-6, 2017</b>	<b>Rapid City</b>
	<b>Public Hearing</b>	<b>November 2, 2017</b>	<b>Brookings</b>
	<b>Finalization</b>	<b>November 2-3, 2017</b>	<b>Brookings</b>

**Duration of Recommendation:** 2018 and 2019 hunting seasons

**Season Dates:** September 1 – December 31, 2018  
September 1 – December 31, 2019

**Open Area:** Unit 1: That portion of Pennington County within an area beginning at Hwy. 385 and the Pennington County line, then south on Hwy. 385 to Sheridan Lake Rd., then east on Sheridan Lake Rd. to Hwy. 79 in Rapid City, then north on Hwy. 79 to the Pennington County line.  
Unit 2: Custer County west of Highway 79, except Custer State Park, Wind Cave National Park, and Jewel Cave National Monument.

**Licenses:** No more than 5 "ram bighorn sheep" licenses  
  
One of the 5 licenses shall be an auction "ram bighorn sheep" license if a minimum of three total bighorn sheep licenses are allocated.

**Requirements and Restrictions:**

1. All licensees are required to attend an orientation meeting prior to the opening day of the season at the regional office in Rapid City.
2. Except for the auction license, application for a license may be made by any resident hunter who has not been previously issued a bighorn sheep license in South Dakota.
3. Hunters can only apply for one of the two Black Hills bighorn sheep units.
4. Land operator preference is not applicable to these licenses.
5. One bighorn sheep license shall be allocated as an auction license if a minimum of three bighorn licenses are approved by the Commission. The Commission shall determine in which unit or units the auction license if valid.
6. All successful hunters must submit their bighorn sheep to a conservation officer or Department representative for inspection and permanent marking within 24 hours after the kill.

**Recommended changes from last year:**

1. No more than 5 bighorn sheep licenses may be issued.
2. Remove the language in administrative rule depicting the license type and number of licenses from each hunting unit.

APPROVE _____	MODIFY _____	REJECT _____	NO ACTION _____
---------------	--------------	--------------	-----------------



## GAME, FISH, AND PARKS COMMISSION ACTION PROPOSAL

<b>Commission Meeting Dates:</b>	<b>Proposal</b>	<b>October 5-6, 2017</b>	<b>Rapid City</b>
	<b>Public Hearing</b>	<b>November 2, 2017</b>	<b>Brookings</b>
	<b>Finalization</b>	<b>November 2-3, 2017</b>	<b>Brookings</b>

**Duration of Recommendation:** 2017/2018 hunting seasons.

**Season Dates:**

- CAE-CU1: October 7-15, 2017
- CAE-CU2: October 21-29, 2017
- CAE-CU3: December 2-10, 2017
- CAE-CU4: December 16-24, 2017
- CAE-CU5: December 30, 2017 – January 7, 2018
- CAE-CU6: January 13-21, 2018

**Licenses:** No more than 60 antlerless elk licenses.

**Recommended changes from last year:**

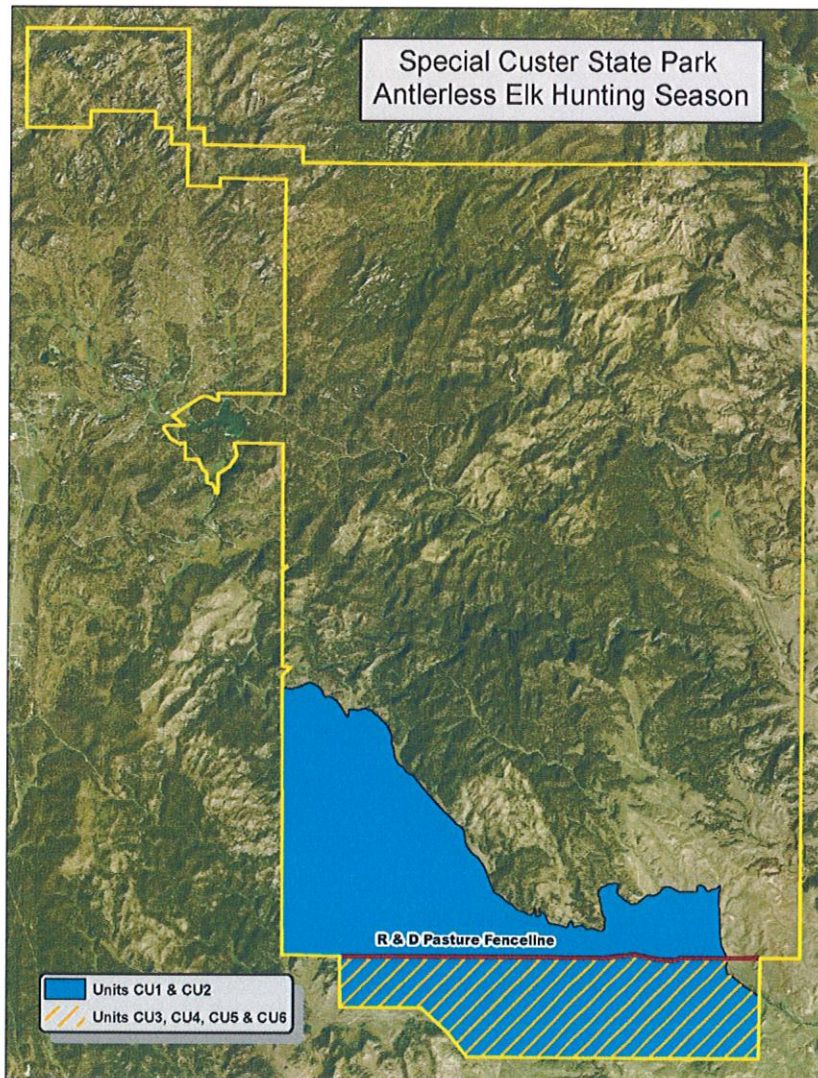
1. Increase the number of "antlerless elk" licenses from no more than 20 to no more than 60.
2. Establish new "antlerless elk" hunting units described as that portion of Custer State Park south of the R & D Pasture fence line (see attached map). This boundary applies to Units CAE-CU3, CAE-CU4, CAE-CU5, and CAE-CU6.
3. Season dates for Units CAE-CU3, CAE-CU4, CAE-CU5, and CAE-CU6 are as follows:
  - CAE-CU3: nine consecutive days beginning on the second Saturday following Thanksgiving;
  - CAE-CU4: nine consecutive days beginning on the Saturday following the close of CAE-CU3;
  - CAE-CU5: nine consecutive days beginning on the Saturday following the close of CAE-CU4;
  - CAE-CU6: nine consecutive days beginning on the Saturday following the close of CAE-CU5;
4. Mandatory submission of required samples for CWD testing.

New information on chronic wasting disease (CWD) prevalence rates from both CSP (2016 season) and WICA (2016/2017 culling program) warrants adaptive management to learn more about the infection rate of CSP elk, begin managing at a lower population density in identified area, and to evaluate and respond accordingly for future management actions. CWD positive prevalence rate of 15% from hunter-harvested elk during the 2016 CSP elk hunting season is a concern, both short and long-term for elk population. Department staff will evaluate disease test results and structure of season and adapt as needed for the 2018 elk season.

APPROVE _____	MODIFY _____	REJECT _____	NO ACTION _____
---------------	--------------	--------------	-----------------

Year	Licenses	Applicants	Success
2006	100	4,105	73%
2007	60	4,339	57%
2008	40	4,383	59%
2009	20	4,546	95%
2010	5	4,420	80%
2011	CLOSED		
2012	CLOSED		
2013	CLOSED		
2014	CLOSED		
2015	CLOSED		
2016	20	3,138	90%
2017	20	3,035	NA

**Proposed Boundary**



APPROVE \_\_\_\_\_ MODIFY \_\_\_\_\_ REJECT \_\_\_\_\_ NO ACTION \_\_\_\_\_

GAME, FISH AND PARKS COMMISSION ADMINISTRATIVE ACTION

**Elk Hunting Seasons – Hunting Unit License Allocation**

Commission Meeting Dates:	Proposal	October 5-6, 2017	Rapid City
	Public Hearing	November 2, 2017	Brookings
	Finalization	November 2-3, 2017	Brookings

**LICENSE ALLOCATION BY SEASONS AND UNITS**

2017 CSP Special Antlerless Elk Hunting Seasons

Custer State Park		
Special Antlerless Elk Licenses		
Season	2016	2017
CAE-CU1	10	10
CAE-CU2	10	10
CAE-CU3	0	10
CAE-CU4	0	10
CAE-CU5	0	10
CAE-CU6	0	10

APPROVE \_\_\_\_\_ MODIFY \_\_\_\_\_ REJECT \_\_\_\_\_ NO ACTION \_\_\_\_\_

# GAME, FISH AND PARKS COMMISSION ACTION PROPOSAL

## Endangered and Threatened Species (Chapter 41:10)

Commission Meeting Dates:	Proposal	October 5-6, 2017	Rapid City
	Public Hearing	November 2, 2017	Brookings
	Finalization	November 2-3, 2017	Brookings

## DEPARTMENT RECOMMENDATION

### Amend 41:10:02:01 List of Endangered Birds as follows:

Change Interior Least Tern (*Sterna antillarum athalassos*) to Least Tern (*Sternula antillarum*)

### Amend 41:10:02:05 List of Endangered Fish as follows:

Change Finescale dace (*Phoxinus neogaeus*) to Finescale dace (*Chrosomus neogaeus*).

### Amend 41:10:02:06 List of Threatened Fish as follows:

Change Northern redbelly dace (*Phoxinus eos*) to Northern redbelly dace (*Chrosomus eos*).

Change Pearl dace (*Margariscus margarita*) to Northern pearl dace (*Margariscus nachtriebi*).

## SUPPLEMENTARY INFORMATION

Least tern: This change reflects updated taxonomic changes to the scientific and common names of this species.

Finescale dace: This change reflects updated taxonomic changes on the appropriate scientific name.

Northern redbelly dace: This change reflects updated taxonomic changes on the appropriate scientific name.

Northern pearl dace: This change reflects updated taxonomic changes on the appropriate common and scientific names.

APPROVE _____	MODIFY _____	REJECT _____	NO ACTION _____
---------------	--------------	--------------	-----------------

# GAME, FISH, AND PARKS COMMISSION ACTION PROPOSAL



<b>Commission Meeting Dates:</b>	<b>Proposal</b>	<b>October 5-6, 2017</b>	<b>Rapid City</b>
	<b>Public Hearing</b>	<b>November 2, 2017</b>	<b>Brookings</b>
	<b>Finalization</b>	<b>November 2-3, 2017</b>	<b>Brookings</b>

## DEPARTMENT RECOMMENDATION

### Recommended changes from last year:

Amend 41:08:06:02. Applications—Contents--Submission.

1. Amend current administrative rule to allow nonresidents to obtain an aerial hunting permit from the Department.

## SUPPORTIVE INFORMATION

Currently in administrative rule, only residents are allowed to obtain an aerial hunting permit from the Department. There has been interest from some landowners to bring in nonresident pilots to assist with aerial predator control needs on their livestock operations. This change would allow nonresident pilots to obtain an aerial hunting permit.

APPROVE <input type="checkbox"/>	MODIFY <input type="checkbox"/>	REJECT <input type="checkbox"/>	NO ACTION <input type="checkbox"/>
----------------------------------	---------------------------------	---------------------------------	------------------------------------

GAME, FISH AND PARKS COMMISSION ACTION  
PROPOSAL

<b>FISH LIMITS 41:07:03</b>
-----------------------------

<b>Commission Meeting Dates:</b>	<b>Proposal</b>	October 5 – 6, 2017	Rapid City
	<b>Public Hearing</b>	November 2, 2017	Brookings
	<b>Finalization</b>	November 2 – 3, 2017	Brookings

**DEPARTMENT RECOMMENDATION**

Modify 41:07:03:03. "Daily, possession, and length limit restrictions on special management waters -- Additional restrictions described." to: remove 15 inch minimum size restriction for walleye on Lake Poinsett.

**SUPPORTIVE INFORMATION**

The Lake Poinsett walleye population has a large year class present. Fish growth is slow and walleye are succumbing to natural mortality prior to attaining 15 inches in length. The current walleye regulation has been ineffective at improving size structure.

APPROVE

MODIFY

REJECT

NO ACTION

**GAME, FISH AND PARKS COMMISSION ACTION  
PROPOSAL**

<b>BAIT CHAPTER 41:09:04</b>
----------------------------------

<b>Commission Meeting Dates:</b>	<b>Proposal</b>	October 5-6, 2017	Rapid City
	<b>Public Hearing</b>	November 2, 2017	Brookings
	<b>Finalization</b>	November 2-3, 2017	Brookings

**DEPARTMENT RECOMMENDATION**

Amend 41:09:04:02 to include agents/employees of bait dealers as persons eligible to take bait.

Create a new rule to require all bait dealers to list employees/agents on their application who will engage in trapping, transporting, delivering, raising or seining bait and allow the department to refuse the issuance of a license to a bait dealer with an employee/agent who has received a suspension or revocation of their bait dealer license.

**Requirements and Restrictions:**

**Resident Retail Bait Dealer License - \$30 fee**

The license permits the licensee to raise, trap, seine, buy, sell, possess, and transport bait. No retail bait dealer may sell bait to wholesale, retail or export bait dealers. This license is not required for residents under 16 years of age.

**Resident Wholesale Bait Dealer License - \$275 fee**

The license permits the licensee to raise, trap, seine, buy, sell to any retail, wholesale, or export bait dealer, possess, and transport bait and other wild animals commonly used as fish bait within the state, and to transport and sell bait in any adjoining state. This license is not required by residents under 16 years of age.

**Export Bait Dealer License - \$400 fee**

The license permits the licensee to buy and possess bait within the state and transport the bait out of the state for resale.

**Nonresident Retail Bait Dealer License - \$55 fee**

The license permits the licensee to buy, sell, possess and transport bait. No nonresident bait dealer licensed under this section may sell bait to wholesale, retail or export bait dealers.

**Nonresident Wholesale Bait Dealer License - \$550 fee**

The license permits the licensee to transport bait into the state, possess bait within the state, and sell bait within the state to any retail, wholesale or export bait dealers.

**SUPPORTIVE INFORMATION**

**41:09:04:17. Conviction for violation may be cause for revocation and non-renewal of bait dealer license.** A conviction for a violation of any of the provisions of this chapter or of SDCL 41-6-44 to 41-6-45.1, inclusive, by a bait dealer, or a bait dealer's agent, or employee, may be cause for immediate revocation of the bait dealer's current license and serve as the basis for the department's refusal to issue a license to the bait dealer for the calendar year following the year of conviction.

**41-6-66. Commission or department to direct form of licenses.** Any license permitted or provided for in this title and § 32-20A-15.1 shall be in such form as the Game, Fish, and Parks Commission or department directs.

2017 Resident Wholesale Bait Dealers: 21

2017 Resident Retail Bait Dealers: 132

**APPROVE**

**MODIFY**

**REJECT**

**NO ACTION**

GAME, FISH AND PARKS COMMISSION ACTION  
PROPOSAL

**Park License and Trail Use Pass  
Chapter 41:03:03  
and  
Park Facility Use Fees  
Chapter 41:03:04**

Commission Meeting Dates:	<b>Proposal</b>	October 5-6, 2017	Rapid City, SD
	<b>Public Hearing</b>	November 2-3, 2017	Brookings, SD
	<b>Finalization</b>	November 2-3, 2017	Brookings, SD

**DEPARTMENT RECOMMENDATION**

**Recommended changes:**

**41:03:03:06. Park entrance license fees.** The park entrance license fees are as follows:

(4) Except at Custer State Park, the daily park entrance license fee is \$4 for each person in the motor vehicle who is 12 years old or older or \$6 a vehicle;

**41:03:04:01. Definitions.** Terms used in this chapter have the following meanings:

(10) "Preferred campground," a modern campground with weekend occupancy of exceeding 80 percent to 89 percent from the Friday before Memorial Day to Labor Day, inclusive, on non-equestrian and electrical campsites;

(11) "Prime waterfront campsite campground," a modern campsite campground adjacent to the waterfront at Lewis and Clark Recreation Area and Chief White Crane Recreation Area with weekend occupancy of and greater than 90 exceeding 95 percent from the Friday before Memorial Day to Labor Day, inclusive, on non-equestrian and electrical campsites;

(12) "Primitive lodging campsite," a campsite where a canvas teepee or wall tent with a wooden floor is provided by the department;

**41:03:04:03. Camping permit fees.** The daily fee for the use of a campground site by one camper unit is as follows:

(2) Modern campground fee, \$13. Campgrounds included are ~~Fort Sisseton, except during the Fort Sisseton Festival (see subdivision (6) of this section); Union Grove; Platte Creek; Swan Creek; Fisher Grove; West Whitlock; Indian Creek; Pease Creek; Okobojo Point; Cow Creek; Buryanek; and West Pollock;~~

(8) Camping cabin fee, ~~\$40~~**\$45**. Campgrounds included are those in all state parks and recreation areas where camping cabins are located. However, at Lewis and Clark Recreation Area, Pierson Ranch Recreation Area, and Chief White Crane Recreation Area the camping cabin fee is \$45. Except at At Custer State Park where the camping cabin fee is \$50;

(10) Preferred campground fee, \$15. Campgrounds included are **Fisher Grove; Buryanek; Oakwood Lakes; Angostura, including Shep's Canyon; Lake Vermillion; Lewis and Clark, except those campsites designated as prime waterfront campsites; Newton Hills; Snake Creek; Palisades; Roy Lake; Lake Herman; Lake Poinsett; Walker's Point; Pickerel; Shadehill-Ketterlings Point; Sandy Shore; Lake Cochrane; Farm Island; Lake Louise; Lake Thompson; Mina; Chief White Crane, except those campsites designated as prime waterfront campsites; Pierson Ranch; North Point; Oahe Downstream; Big Sioux; Hartford Beach; Richmond; Springfield; Rocky Point; West Bend; and** Randall Creek; and South Pelican;

(11) Prime campsite fee, \$17. Sites included are: all campsites furnished with sewer, water, and electrical service; Lewis and Clark; campsite numbers 117P to 164P, inclusive; 163P; 164P; 166P; 213P to 223P, inclusive; 317P to 334P, inclusive; and 384P to 409P, inclusive; and Chief White Crane campsite numbers 111P to 145P, inclusive; Angostura including Sheps Canyon; Palisades; Big Sioux; Lake Vermillion; Rocky



**GAME, FISH AND PARKS COMMISSION ACTION  
PROPOSAL**

**Point; Mina Lake; Lake Herman; North Point; Walker's Point; Lake Poinsett; Oakwood Lakes; South Pelican; Newton Hills; Shadehill Ketterlings Point; Pickerel Lake; Lake Cochrane; Sandy Shore; Pierson Ranch; Union Grove; Richmond Lake; Pease Creek; Lake Thompson; Roy Lake; Farm Island; Snake Creek; Lake Louise; Hartford Beach; and Fort Sisseton, except during the Fort Sisseton Festival (see subdivision (6) of this section);**

~~(12) Primitive lodging campsite fee, \$23. The campground included is Fort Sisseton State Park;~~

(14) The group lodging fee at: Mina Lake State Recreation Area is ~~\$185~~ **\$205** and Shadehill State Recreation Area is ~~\$185~~ **\$205** a night for the first eight persons plus \$10 for each additional person with a maximum occupancy of ten persons; Lake Thompson State Recreation Area, Palisades State Park, Sheps Canyon State Recreation Area, and Newton Hills State Park is ~~\$240~~ **\$280** a night for the first 12 persons plus \$10 for each additional person with a maximum occupancy of 15 persons;

(15) Custer State Park, French Creek Horse Camp fee, ~~\$26~~ **\$31**;

**41:03:04:13. Park facility use fees.** The fee for the use of the following state park facilities is:

(2) Fort Sisseton south barracks, ~~\$300~~ **\$500** for a period from 10:00 a.m. Friday to 6:00 p.m. Sunday, inclusive;

(5) Lewis and Clark catamaran dry slip storage, ~~\$300~~ **\$325** for a period from May 1 to September 30, inclusive. For seasonal slip rental beginning on or after July 15, the fee is \$60 plus two dollars per day. Temporary slip rental is five dollars per day;

(6) Angostura catamaran dry slip storage, ~~\$150~~ **\$175** or a period from May 1 to September 30, inclusive. For seasonal slip rental beginning on or after July 15, the fee is \$30 plus two dollars per day. Temporary slip rental is five dollars per day;

**SUPPORTIVE INFORMATION**

Inflationary increases in operating costs, deferred maintenance and road improvement project costs necessitate periodic fee increases in order to provide a high quality state park system. We have been successful in doing so, without negatively impacting the public's willingness to support state parks, by incrementally adjusting fees and avoiding large one-time increases.

Seventy three percent of park visitors that choose to purchase a daily entrance license buy a \$6 per vehicle license versus the \$4 per person license. Eliminating the \$4 license will reduce the license inventory needed at park entrance booths, make the fiscal audit process more efficient, satisfy the majority of park users and generate an estimated \$67,400 in new revenue.

Camping fees are set based on demand. Prices are higher for parks that have higher campground occupancy. Campgrounds equipped with individual camping pads, and either flush toilets and lavatories without showers or a shower house and vault toilets are classified as "modern". Based on weekend occupancy between Memorial Day weekend and Labor Day, modern campgrounds are further defined as Prime, Preferred or Modern. To generate needed revenue, the rule change would move more campgrounds into the Prime price category. Campsite prices would remain at \$21-Prime, \$19-Preferred and \$17-Modern. Other lodging and rental fees are being incrementally increased in recognition of demand and the need for new revenue to support the state park system. In total, these changes are projected to generate \$624,000. See the attached spreadsheet.

**APPROVE**

**MODIFY**

**REJECT**

**NO ACTION**

# State Fee History 2008-2017 and proposed 2018 changes

Proposed 2018 Fee Increase \* Potential New Revenue Generated

	2008	2009	2010	2011	2012	2013	2014	2015	2016	2017	2018	Potential New Revenue Generated
<b>Park Entrance License</b>												
Annual	\$23.00	\$28.00	\$28.00	\$28.00	\$28.00	\$30.00	\$30.00	\$30.00	\$30.00	\$30.00	\$30.00	\$54,295
Second Vehicle	\$11.50	\$14.00	\$14.00	\$14.00	\$14.00	\$15.00	\$15.00	\$15.00	\$15.00	\$15.00	\$15.00	\$13,801
Combo		\$42.00	\$42.00	\$42.00	\$42.00	\$45.00	\$45.00	\$45.00	\$45.00	\$45.00	\$45.00	\$26,856
Transferable	\$60.00	\$60.00	\$60.00	\$60.00	\$60.00	\$65.00	\$65.00	\$65.00	\$65.00	\$65.00	\$65.00	\$1,646
Daily/Person	\$3.00	\$4.00	\$4.00	\$4.00	\$4.00	\$4.00	\$4.00	\$4.00	\$4.00	\$4.00	\$4.00	\$33,700
Daily/Vehicle	\$5.00	\$6.00	\$6.00	\$6.00	\$6.00	\$6.00	\$6.00	\$6.00	\$6.00	\$6.00	\$6.00	\$87,227
George S. Mickelson Trail Annual Pass	\$15.00	\$15.00	\$15.00	\$15.00	\$15.00	\$15.00	\$15.00	\$15.00	\$15.00	\$15.00	\$15.00	\$4,050
George S. Mickelson Trail Daily Pass	\$3.00	\$3.00	\$3.00	\$3.00	\$3.00	\$3.00	\$3.00	\$3.00	\$3.00	\$3.00	\$3.00	\$16,411
Motorcoach	\$2.00	\$2.00	\$2.00	\$2.00	\$2.00	\$2.00	\$2.00	\$2.00	\$2.00	\$2.00	\$2.00	\$19,467
CSP 7-Day/Vehicle	\$12.00	\$15.00	\$15.00	\$15.00	\$15.00	\$15.00	\$15.00	\$15.00	\$20.00	\$20.00	\$20.00	\$165,756
CSP Motorcycle Band/Motorcycle - 7-Day		\$10.00	\$10.00	\$10.00	\$10.00	\$10.00	\$10.00	\$10.00	\$10.00	\$10.00	\$10.00	\$47,178
<b>Camping Fees</b>												
** Prime	\$17.06	\$17.06	\$17.06	\$18.96	\$18.96	\$18.96	\$21.00	\$21.00	\$21.00	\$21.00	\$21.00	\$208,236
*** Preferred Campgrounds	\$15.17	\$15.17	\$15.17	\$17.06	\$17.06	\$17.06	\$19.00	\$19.00	\$19.00	\$19.00	\$19.00	\$2,809
Modern Campgrounds	\$13.27	\$13.27	\$13.27	\$15.17	\$15.17	\$15.17	\$17.00	\$17.00	\$17.00	\$17.00	\$17.00	\$24,409
Basic campgrounds	\$11.37	\$11.37	\$11.37	\$13.27	\$13.27	\$13.27	\$15.00	\$15.00	\$15.00	\$15.00	\$15.00	\$4,692
Basic Equestrian CG except CSP	\$9.48	\$9.48	\$9.48	\$11.37	\$11.37	\$11.37	\$13.00	\$13.00	\$13.00	\$13.00	\$13.00	\$377
Semi-modern Equestrian CG except CSP	\$15.17	\$15.17	\$15.17	\$17.06	\$17.06	\$17.06	\$19.00	\$19.00	\$19.00	\$19.00	\$19.00	\$1,436
CSP Modern Campgrounds	\$20.86	\$20.86	\$20.86	\$22.75	\$22.75	\$22.75	\$25.00	\$25.00	\$25.00	\$25.00	\$25.00	\$34,970
CSP Equestrian Campground	\$23.70	\$23.70	\$23.70	\$25.59	\$25.59	\$25.59	\$30.00	\$30.00	\$30.00	\$30.00	\$30.00	\$3,614
CSP Center Lake Campground	\$15.17	\$15.17	\$15.17	\$17.06	\$17.06	\$17.06	\$19.00	\$19.00	\$19.00	\$19.00	\$19.00	\$7,117
CSP French Creek Natural Area	\$3.80/person	\$3.80/person	\$3.80/person	\$5.69/person	\$5.69/person	\$5.69/person	\$7/person	\$7/person	\$7/person	\$7/person	\$7/person	\$-
CSP Game Lodge & Stockade Group Areas	\$3.80/person	\$3.80/person	\$3.80/person	\$5.69/person	\$5.69/person	\$5.69/person	\$7/person	\$7/person	\$7/person	\$7/person	\$7/person	\$-
Youth Group Camping Statewide	\$4.7/person	\$4.7/person	\$4.7/person	\$4.7/person	\$4.7/person	\$4.7/person	\$5.00/person	\$5.00/person	\$5.00/person	\$5.00/person	\$5.00/person	\$75
Camping Cabin except CSP and L&C	\$33.18	\$33.18	\$33.18	\$35.07	\$35.07	\$35.07	\$40.00	\$40.00	\$40.00	\$40.00	\$40.00	\$17,778
L&C Camping Cabin	\$37.91	\$37.91	\$37.91	\$39.81	\$39.81	\$39.81	\$45.00	\$45.00	\$45.00	\$45.00	\$45.00	\$2,378
CSP Camping Cabins	\$42.65	\$42.65	\$42.65	\$44.55	\$44.55	\$44.55	\$50.00	\$50.00	\$50.00	\$50.00	\$50.00	\$7,031
Group Lodge - Mtna	\$127.96	\$127.96	\$127.96	\$151.66	\$151.66	\$151.66	\$185.00	\$185.00	\$185.00	\$185.00	\$185.00	\$95
Group Lodge - Shaddehill	\$127.96	\$127.96	\$127.96	\$151.66	\$151.66	\$151.66	\$185.00	\$185.00	\$185.00	\$185.00	\$185.00	\$188
Group Lodge - Lake Thompson	\$189.57	\$189.57	\$189.57	\$213.27	\$213.27	\$213.27	\$240.00	\$240.00	\$240.00	\$240.00	\$240.00	\$95
Group Lodge - Newton Hills	\$189.57	\$189.57	\$189.57	\$213.27	\$213.27	\$213.27	\$240.00	\$240.00	\$240.00	\$240.00	\$240.00	\$108
Group Lodge - Palisades	\$189.57	\$189.57	\$189.57	\$213.27	\$213.27	\$213.27	\$240.00	\$240.00	\$240.00	\$240.00	\$240.00	\$113
Group Lodge - Sheps Canyon	\$189.57	\$189.57	\$189.57	\$213.27	\$213.27	\$213.27	\$240.00	\$240.00	\$240.00	\$240.00	\$240.00	\$108
Group Meeting Lodge - Oahe Downstream	\$118.48	\$118.48	\$118.48	\$118.48	\$118.48	\$118.48	\$125.00	\$125.00	\$125.00	\$125.00	\$125.00	\$81
<b>Miscellaneous</b>												
Picnic Reservation	\$10.43	\$10.43	\$10.43	\$18.96	\$18.96	\$18.96	\$20.00	\$20.00	\$20.00	\$20.00	\$20.00	\$556
Firewood	\$2.84	\$2.84	\$2.84	\$3.79	\$3.79	\$3.79	\$4.74	\$4.74	\$4.74	\$4.74	\$4.74	\$33,742
Non-Resident on-line Reservations	\$5.00	\$7.70	\$7.70	\$7.70	\$7.70	\$7.70	\$7.70	\$7.70	\$7.70	\$7.70	\$7.70	\$23,511
Non-Resident call center Reservations	\$0.00	\$0.00	\$0.00	\$0.00	\$0.00	\$0.00	\$0.00	\$0.00	\$0.00	\$0.00	\$0.00	\$-
Resident on-line Reservations	\$0.00	\$0.00	\$0.00	\$0.00	\$0.00	\$0.00	\$0.00	\$0.00	\$0.00	\$0.00	\$0.00	\$-
Resident call center Reservations	\$0.00	\$0.00	\$0.00	\$0.00	\$0.00	\$0.00	\$0.00	\$0.00	\$0.00	\$0.00	\$0.00	\$-
Fort Sisseton S. Barracks per weekend				\$300.00	\$300.00	\$300.00	\$300.00	\$300.00	\$300.00	\$300.00	\$300.00	\$20
Fort Sisseton event tent - off site				\$1,000.00	\$1,000.00	\$1,000.00	\$1,000.00	\$1,000.00	\$1,000.00	\$1,000.00	\$1,000.00	\$8
Fort tent transport fee - per mile over 25				\$2.00/mile	\$2.00/mile	\$2.00/mile	\$2.00/mile	\$2.00/mile	\$2.00/mile	\$2.00/mile	\$2.00/mile	\$3
Fort grounds - outdoor wedding if benches used				\$125.00	\$125.00	\$125.00	\$125.00	\$125.00	\$125.00	\$125.00	\$125.00	\$3
Lewis & Clark calataman dry storage				\$300.00	\$300.00	\$300.00	\$300.00	\$300.00	\$300.00	\$300.00	\$300.00	\$30
Angostura calataman dry storage				\$150.00	\$150.00	\$150.00	\$150.00	\$150.00	\$150.00	\$150.00	\$150.00	\$7
<b>Boat License Fees</b>												
1-year under 19 ft motorized	\$15.00	\$20.00	\$20.00	\$20.00	\$20.00	\$20.00	\$20.00	\$20.00	\$25.00	\$25.00	\$25.00	\$40,010
1-year 19 & over motorized	\$30.00	\$40.00	\$40.00	\$40.00	\$40.00	\$40.00	\$40.00	\$40.00	\$45.00	\$45.00	\$45.00	\$14,832
1-year non-motorized/electric	\$10.00	\$12.50	\$12.50	\$12.50	\$12.50	\$12.50	\$12.50	\$12.50	\$15.00	\$15.00	\$15.00	\$4,885
<b>All camping fees are for sites with electricity. Non-electric sites are \$4.00 less.</b>												
<b>Most recent fee adjustment</b>												
<b>Proposed for 2018 fee adjustment</b>												
<b>* Potential New Revenue Generated is based on 2016 Units Sold.</b>												
<b>** and *** New revenue results from moving 28 high demand campgrounds from Preferred to Prime pricing and two campgrounds from Modern to Preferred.</b>												
											<b>Total New Revenue \$</b>	<b>623,995</b>

**DIVISION OF PARKS AND RECREATION**  
**January to September 2017 Revenue Comparison by Item**

	2016		2017		%
	Number	Dollar	Number	Dollar	
Annual	51,038	\$ 1,531,134	53,096	\$ 1,592,890	4%
Second Vehicle	13,553	\$ 203,297	14,342	\$ 215,127	6%
Combo	23,635	\$ 1,063,594	25,144	\$ 1,131,470	6%
Transferable	1,543	\$ 100,307	1,713	\$ 111,348	11%
Daily / Person	32,087	\$ 128,348	31,839	\$ 127,354	-1%
Daily / Vehicle	81,924	\$ 491,545	85,158	\$ 510,950	4%
Unattended Vehicle Daily	1,805	\$ 18,048	2,039	\$ 20,388	13%
Motorcoach Permit	14,565	\$ 43,694	23,159	\$ 69,476	59%
GSM Annual Trail Pass	2,582	\$ 38,730	3,165	\$ 47,475	23%
GSM Daily Trail Pass	11,693	\$ 46,772	10,430	\$ 41,718	-11%
CSP 7 Day Pass	155,881	\$ 3,117,620	160,343	\$ 3,206,865	3%
Bike Band	16,587	\$ 165,867	21,417	\$ 214,170	29%
Rally Bike Band	30,581	\$ 305,810	28,369	\$ 283,690	-7%
One-Day Special Event	N/A	\$ 10,777	N/A	\$ 8,000	-26%
<b>PERMITS</b>	<b>437,474</b>	<b>\$ 7,265,543</b>	<b>460,213</b>	<b>\$ 7,580,921</b>	<b>4%</b>
Camping Services Permits	-	\$ 8,152,602	-	\$ 8,479,248	4%
Gift Card	-	\$ 4,135	-	\$ 5,885	42%
Picnic Reservations	-	\$ 19,375	-	\$ 16,683	-14%
Firewood	32,063	\$ 160,316	32,080	\$ 160,400	0%
<b>LODGING</b>	<b>32,063</b>	<b>\$ 8,336,428</b>	<b>32080</b>	<b>\$ 8,662,217</b>	<b>4%</b>
<b>TOTAL</b>	<b>469,537</b>	<b>\$ 15,601,971</b>	<b>492,293</b>	<b>\$ 16,243,138</b>	<b>4%</b>

**DIVISION OF PARKS AND RECREATION**  
**January to September 2017 Revenue Comparison by District**

<b>LOCATION</b>	<b>2015</b>	<b>2016</b>	<b>%</b>
Fort Sisseton			
Pickere! Lake			
Roy Lake			
Sica Hollow			
<b>DISTRICT 1</b>	<b>\$ 463,647</b>	<b>\$ 462,755</b>	<b>0%</b>
Richmond Lake			
Mina Lake			
Fisher Grove			
Amsden			
Lake Louise			
<b>DISTRICT 2</b>	<b>\$ 259,785</b>	<b>\$ 287,135</b>	<b>11%</b>
Hartford Beach			
Lake Cochrane			
Pelican Lake			
Sandy Shore			
<b>DISTRICT 3</b>	<b>\$ 404,537</b>	<b>\$ 423,588</b>	<b>5%</b>
Oakwood Lakes			
Lake Poinsett			
Lake Thompson			
<b>DISTRICT 4</b>	<b>\$ 773,240</b>	<b>\$ 794,799</b>	<b>3%</b>
Lake Herman			
Walkers Point			
<b>DISTRICT 5</b>	<b>\$ 290,433</b>	<b>\$ 291,747</b>	<b>0%</b>
Snake Creek			
Platte Creek			
Burke Lake			
Buryanek			
<b>DISTRICT 6</b>	<b>\$ 429,131</b>	<b>\$ 419,652</b>	<b>-2%</b>
Palisades			
Lake Vermillion			
Big Sioux			
<b>DISTRICT 7</b>	<b>\$ 836,758</b>	<b>\$ 875,066</b>	<b>5%</b>
Newton Hills			
Good Earth			
Lake Alvin			
Union Grove			
Adams			
<b>DISTRICT 8</b>	<b>\$ 484,308</b>	<b>\$ 567,010</b>	<b>17%</b>

<b>LOCATION</b>	<b>2015</b>	<b>2016</b>	<b>%</b>
Lewis & Clark			
Chief White Crane			
Pierson Ranch			
Springfield			
Sand Creek			
Tabor			
<b>DISTRICT 9</b>	<b>\$ 1,902,730</b>	<b>\$ 1,957,371</b>	<b>3%</b>
North Point			
North Wheeler			
Pease Creek			
Randall Creek			
South Shore			
South Scalp			
Whetstone			
White Swan			
<b>DISTRICT 10</b>	<b>\$ 627,973</b>	<b>\$ 651,980</b>	<b>4%</b>
Farm Island			
West Bend			
<b>DISTRICT 11</b>	<b>\$ 488,891</b>	<b>\$ 519,650</b>	<b>6%</b>
Oahe Downstream			
Cow Creek			
Okobojo			
Spring Creek			
<b>DISTRICT 12</b>	<b>\$ 558,837</b>	<b>\$ 561,554</b>	<b>0%</b>
West Whitlock			
East Whitlock			
Swan Creek			
Indian Creek			
Lake Hiddenwood			
Revheim Bay			
Walth Bay			
West Pollock			
<b>DISTRICT 13</b>	<b>\$ 395,525</b>	<b>\$ 380,543</b>	<b>-4%</b>
Mickelson Trail			
Bear Butte			
<b>DISTRICT 14</b>	<b>\$ 140,060</b>	<b>\$ 132,048</b>	<b>-6%</b>
Shadehill			
Llewellyn Johns			
Rocky Point			
<b>DISTRICT 15</b>	<b>\$ 447,996</b>	<b>\$ 442,971</b>	<b>-1%</b>
Custer			
<b>DISTRICT 16</b>	<b>\$ 6,256,553</b>	<b>\$ 6,558,178</b>	<b>5%</b>
Angostura			
Sheps Canyon			
<b>DISTRICT 17</b>	<b>\$ 653,109</b>	<b>\$ 712,435</b>	<b>9%</b>
<b>PIERRE OFFICE</b>	<b>\$ 187,718</b>	<b>\$ 204,655</b>	<b>9%</b>
<b>TOTAL:</b>	<b>\$ 15,601,971</b>	<b>\$ 16,243,138</b>	<b>4%</b>

**DIVISION OF PARKS AND RECREATION**  
**January TO September 2017 CAMPING UNIT COMPARISON BY DISTRICT**

Park	2016	2017	%
	Units	Units	
Fort Sisseton	1,493	1,441	-3%
Pickereel Lake	6,161	6,359	3%
Roy Lake	6,264	6,841	9%
Sica Hollow	166	164	-1%
<b>District 1</b>	<b>14,084</b>	<b>14,805</b>	<b>5%</b>
Richmond Lake	1,557	1,601	3%
Mina Lake	2,513	2,929	17%
Fisher Grove	968	1,133	17%
Amsden	232	260	12%
Lake Louise	1,678	1,939	16%
<b>District 2</b>	<b>6,948</b>	<b>7,862</b>	<b>13%</b>
Hartford Beach	5,070	5,559	10%
Lake Cochrane	1,913	1,976	3%
Pelican Lake	5,058	5,314	5%
Sandy Shore	1,205	1,253	4%
<b>District 3</b>	<b>13,246</b>	<b>14,102</b>	<b>6%</b>
Oakwood Lakes	8,541	9,178	7%
Lake Poinsett	7,742	8,350	8%
Lake Thompson	6,593	7,150	8%
<b>District 4</b>	<b>22,876</b>	<b>24,678</b>	<b>8%</b>
Lake Herman	5,585	5,754	3%
Walkers Point	3,062	2,920	-5%
Lake Carthage	911	605	-34%
<b>District 5</b>	<b>9,558</b>	<b>9,279</b>	<b>-3%</b>
Snake Creek	9,111	8,877	-3%
Platte Creek	1,429	1,668	17%
Burke Lake	41	48	17%
Buryanek	2,778	2,685	-3%
<b>District 6</b>	<b>13,359</b>	<b>13,278</b>	<b>-1%</b>
Palisades	4,614	4,571	-1%
Big Sioux	5,774	5,659	-2%
Lake Vermillion	8,324	9,088	9%
<b>District 7</b>	<b>18,712</b>	<b>19,318</b>	<b>3%</b>
Newton Hills	10,494	10,575	1%
Good Earth	-	13	
Union Grove	1,330	1,656	25%
<b>District 8</b>	<b>11,824</b>	<b>12,244</b>	<b>4%</b>

Park	2016	2017	%
	Units	Units	
Lewis & Clark	39,639	40,087	1%
Chief White Crane	10,419	11,522	11%
Pierson Ranch	4,176	4,514	8%
Springfield	1,030	1,274	24%
Sand Creek	123	127	3%
Tabor	98	82	-16%
<b>DISTRICT 9</b>	<b>55,485</b>	<b>57,606</b>	<b>4%</b>
North Point	9,507	9,699	2%
North Wheeler	780	805	3%
Pease Creek	1,310	1,529	17%
Randall Creek	6,948	7,376	6%
South Shore	380	483	27%
South Scalp	56	101	80%
Whetstone	448	411	-8%
White Swan	252	221	-12%
<b>DISTRICT 10</b>	<b>19,681</b>	<b>20,625</b>	<b>5%</b>
Farm Island	6,958	7,390	6%
West Bend	8,557	9,931	16%
<b>District 11</b>	<b>15,515</b>	<b>17,321</b>	<b>12%</b>
Oahe Downstream	14,060	14,195	1%
Cow Creek	2,458	2,413	-2%
Okobojo Point	1,361	1,485	9%
<b>District 12</b>	<b>17,879</b>	<b>18,093</b>	<b>1%</b>
West Whitlock	4,181	4,121	-1%
East Whitlock	88	88	0%
Swan Creek	672	685	2%
Indian Creek	6,308	6,307	0%
Lake Hiddenwood	415	395	-5%
Walth Bay	30	33	10%
West Pollock	801	1,042	30%
<b>District 13</b>	<b>12,495</b>	<b>12,671</b>	<b>1%</b>
Bear Butte Lake	1,016	1,164	15%
<b>District 14</b>	<b>1,016</b>	<b>1,164</b>	<b>15%</b>
Shadehill	5,763	5,567	-3%
Llewellyn Johns	505	521	3%
Rocky Point	5,442	5,675	4%
<b>District 15</b>	<b>11,710</b>	<b>11,763</b>	<b>0%</b>
Custer	50,521	50,519	0%
<b>District 16</b>	<b>50,521</b>	<b>50,519</b>	<b>0%</b>
Angostura	16,131	18,728	16%
Sheps Canyon	1,574	1,883	20%
<b>District 17</b>	<b>17,705</b>	<b>20,611</b>	<b>16%</b>
<b>TOTAL FEE AREA</b>			
<b>CAMPER UNITS</b>	<b>312,614</b>	<b>325,939</b>	<b>4%</b>

DIVISION OF PARKS AND RECREATION  
September YTD 2017 VISITATION COMPARISON

	%		
Park	2016	2017	Change
Fort Sisseton	42,100	38,826	-8%
Pickrel Lake	34,907	32,309	-7%
Roy Lake	147,487	145,824	-1%
Sica Hollow	13,620	14,365	5%
<b>District 1</b>	<b>238,114</b>	<b>231,324</b>	<b>-3%</b>
Richmond Lake	28,977	34,896	20%
Mina Lake	46,825	46,694	0%
Fisher Grove	25,661	25,809	1%
Lake Louise	21,793	26,633	22%
<b>District 2</b>	<b>123,256</b>	<b>134,032</b>	<b>9%</b>
Hartford Beach	84,233	88,292	5%
Lake Cochrane	9,395	12,799	36%
Pelican Lake	26,827	22,341	-17%
Sandy Shore	23,061	17,690	-23%
<b>District 3</b>	<b>143,516</b>	<b>141,122</b>	<b>-2%</b>
Oakwood Lakes	64,121	67,368	5%
Lake Poinsett	53,896	55,024	2%
Lake Thompson	39,048	39,365	1%
<b>District 4</b>	<b>157,065</b>	<b>161,757</b>	<b>3%</b>
Lake Herman	77,700	82,105	6%
Walkers Point	32,346	36,619	13%
<b>District 5</b>	<b>110,046</b>	<b>118,724</b>	<b>8%</b>
Snake Creek	132,450	148,369	12%
Platte Creek	64,369	101,389	58%
Burke Lake	14,263	13,036	-9%
Buryanek	36,838	20,815	-43%
<b>District 6</b>	<b>247,920</b>	<b>283,609</b>	<b>14%</b>
Palisades	75,811	78,221	3%
Big Sioux	47,923	47,024	-2%
Beaver Creek	18,597	20,880	12%
Lake Vermillion	89,454	95,158	6%
<b>District 7</b>	<b>231,785</b>	<b>241,283</b>	<b>4%</b>
Newton Hills	87,728	115,361	31%
Good Earth	28,573	56,377	97%
Lake Alvin	20,992	31,944	52%
Union Grove	8,801	11,876	35%
Adams	27,141	28,826	6%
Spirit Mound	10,893	14,152	30%
<b>District 8</b>	<b>184,128</b>	<b>258,536</b>	<b>40%</b>

	%		
Park	2016	2017	Change
Lewis & Clark	639,547	632,427	-1%
Chief White Crane	60,867	55,885	-8%
Pierson Ranch	57,023	63,110	11%
Springfield	80,146	79,825	0%
<b>District 9</b>	<b>837,583</b>	<b>831,247</b>	<b>-1%</b>
North Point	104,245	101,330	-3%
North Wheeler	19,217	13,729	-29%
Pease Creek	32,460	32,926	1%
Randall Creek	31,293	40,922	31%
Ft. Randall Boat Club	17,919	16,543	-8%
<b>District 10</b>	<b>205,134</b>	<b>205,450</b>	<b>0%</b>
Farm Island	125,814	133,764	6%
West Bend	47,335	47,641	1%
LaFramboise Island	64,525	59,674	-8%
<b>District 11</b>	<b>237,674</b>	<b>241,079</b>	<b>1%</b>
Oahe Downstream	410,527	345,415	-16%
Cow Creek	154,398	169,262	10%
Okobojo Point	39,783	40,177	1%
Spring Creek	114,615	141,850	24%
<b>District 12</b>	<b>719,323</b>	<b>696,704</b>	<b>-3%</b>
West Whitlock	66,893	76,962	15%
Swan Creek	58,218	66,508	14%
Indian Creek	65,976	58,665	-11%
Lake Hiddenwood	19,732	17,493	-11%
Revheim Bay	36,462	33,745	-7%
West Pollock	50,207	51,374	2%
<b>District 13</b>	<b>297,488</b>	<b>304,747</b>	<b>2%</b>
Bear Butte	25,455	22,104	-13%
<b>District 14</b>	<b>25,455</b>	<b>22,104</b>	<b>-13%</b>
Shadehill	36,747	36,262	-1%
Llewellyn Johns	5,591	5,445	-3%
Little Moreau	10,710	7,686	-28%
Rocky Point	75,393	84,224	12%
<b>District 15</b>	<b>128,441</b>	<b>133,617</b>	<b>4%</b>
Custer	1,746,408	1,727,154	-1%
<b>District 16</b>	<b>1,746,408</b>	<b>1,727,154</b>	<b>-1%</b>
Angostura	170,289	175,939	3%
Sheps Canyon	44,823	44,652	0%
<b>District 17</b>	<b>215,112</b>	<b>220,591</b>	<b>3%</b>
<b>TOTALS:</b>	<b>5,848,448</b>	<b>5,953,080</b>	<b>2%</b>

South Dakota Department of Game, Fish & Parks - Wildlife Division  
Land Acquisition and Disposal Report  
October 2017

**Final Action Items**

None

**Information Items:** The following proposed acquisition project has been advertised per SDCL 41-4-1.1, and will be brought to the GFP Commission for final action at the November 2017 meeting in Brookings.

**Tobin/Tvinnereim Trust Property**

**Location:** Seven miles northwest of Webster in Day County

**Description:** 783 acres

**Management Objective:** Game Production Area – wildlife habitat management and public hunting access

**Acquisition Cost:** \$548,000.00 (P-R grant program funding)

**Commission Acquisition Priorities:** Parcels containing significant habitat and hunting opportunities for pheasants; parcels containing significant wetland habitat complexes; and parcels that represent intact native prairie grassland systems.

**Worthing GPA Addition Donation**

**Location:** One mile northwest of Worthing in Lincoln County

**Description:** +/- 0.76 acres

**Management Objective:** Game Production Area – wildlife habitat management and public hunting access

**Acquisition Cost:** Donation

**Commission Acquisition Priorities:** Round-out parcels that connect existing Department lands open to hunting, fishing, and other recreational related activities.

**Early Development Projects**

**Armbruster Property**

**Location:** Four miles southwest of Wallace in Clark County

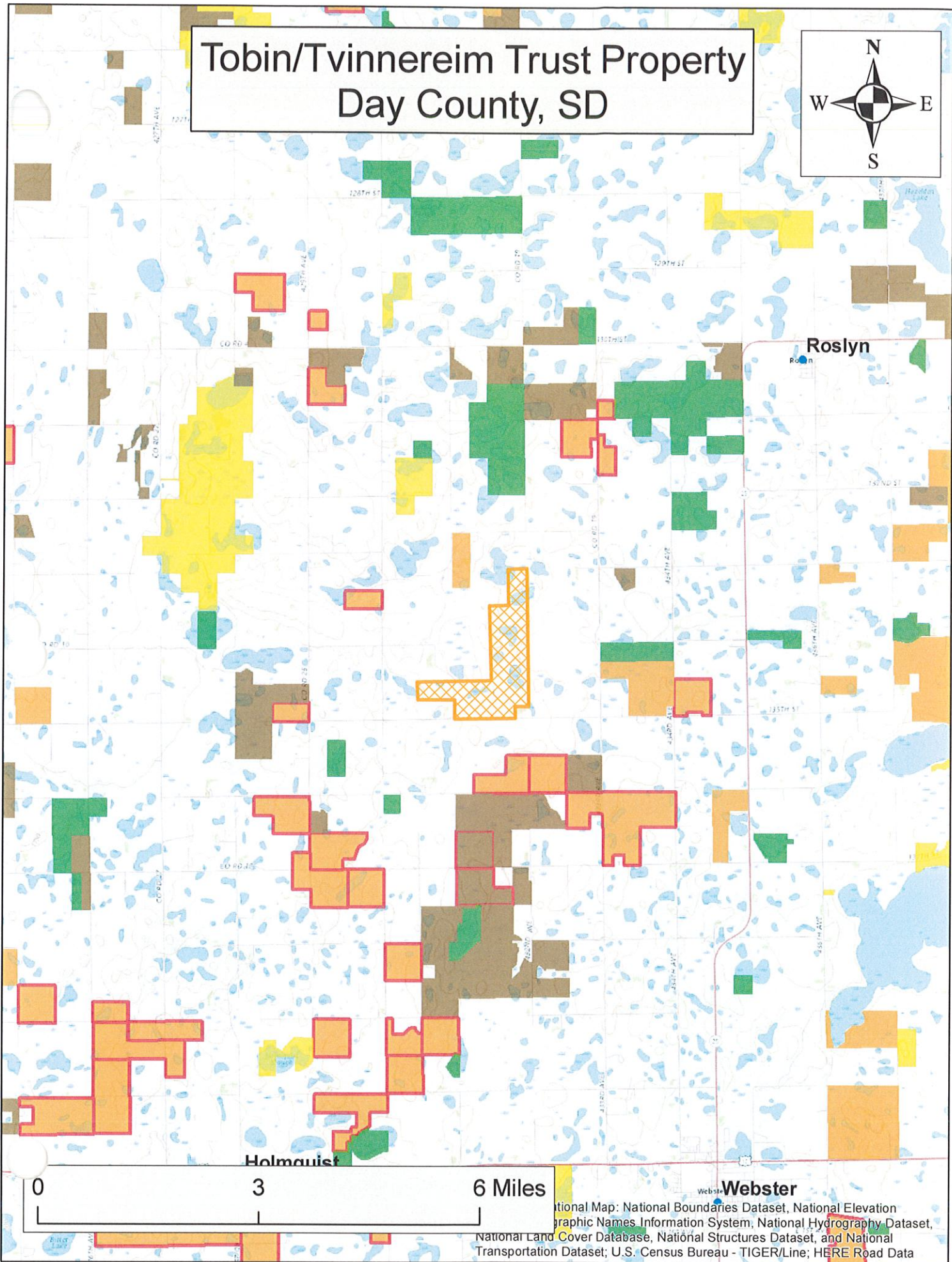
**Description:** 174 acres

**Management Objective:** Game Production Area – wildlife habitat management and public hunting access

**Acquisition Cost:** \$331,000.00 (P-R grant program funding)

**Commission Acquisition Priorities:** Round-out parcels that consolidate or connect existing public lands (Waterfowl Production Area) open to hunting, fishing, and other recreational related activities; parcels containing significant habitat and hunting opportunities for pheasants; and parcels containing significant wetland habitat complexes.

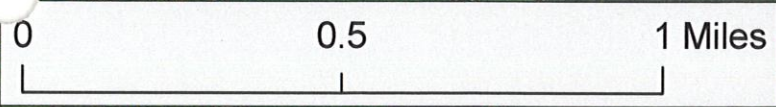
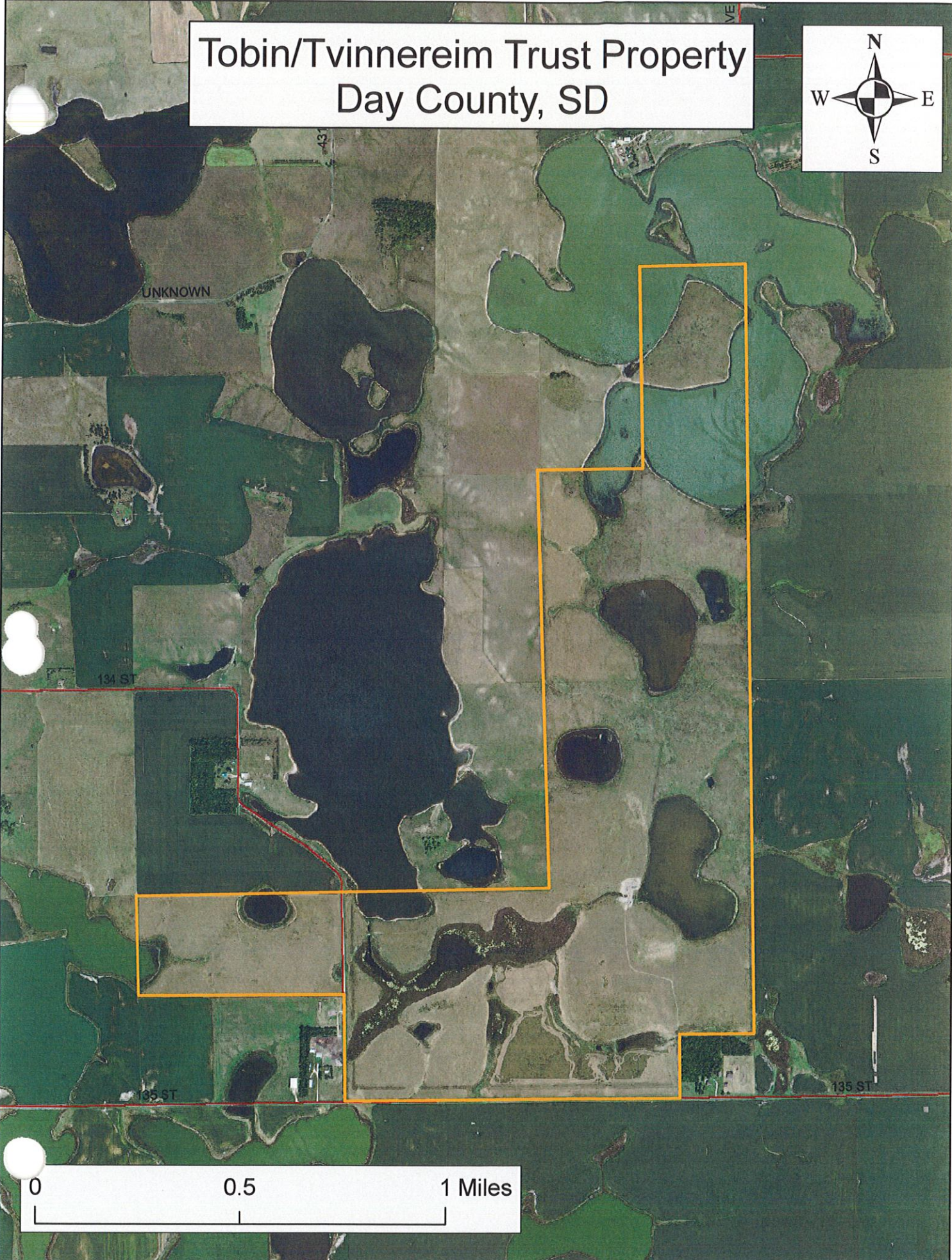
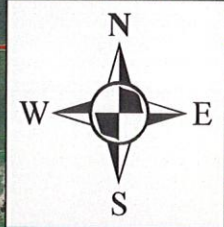
# Tobin/Tvinnereim Trust Property Day County, SD



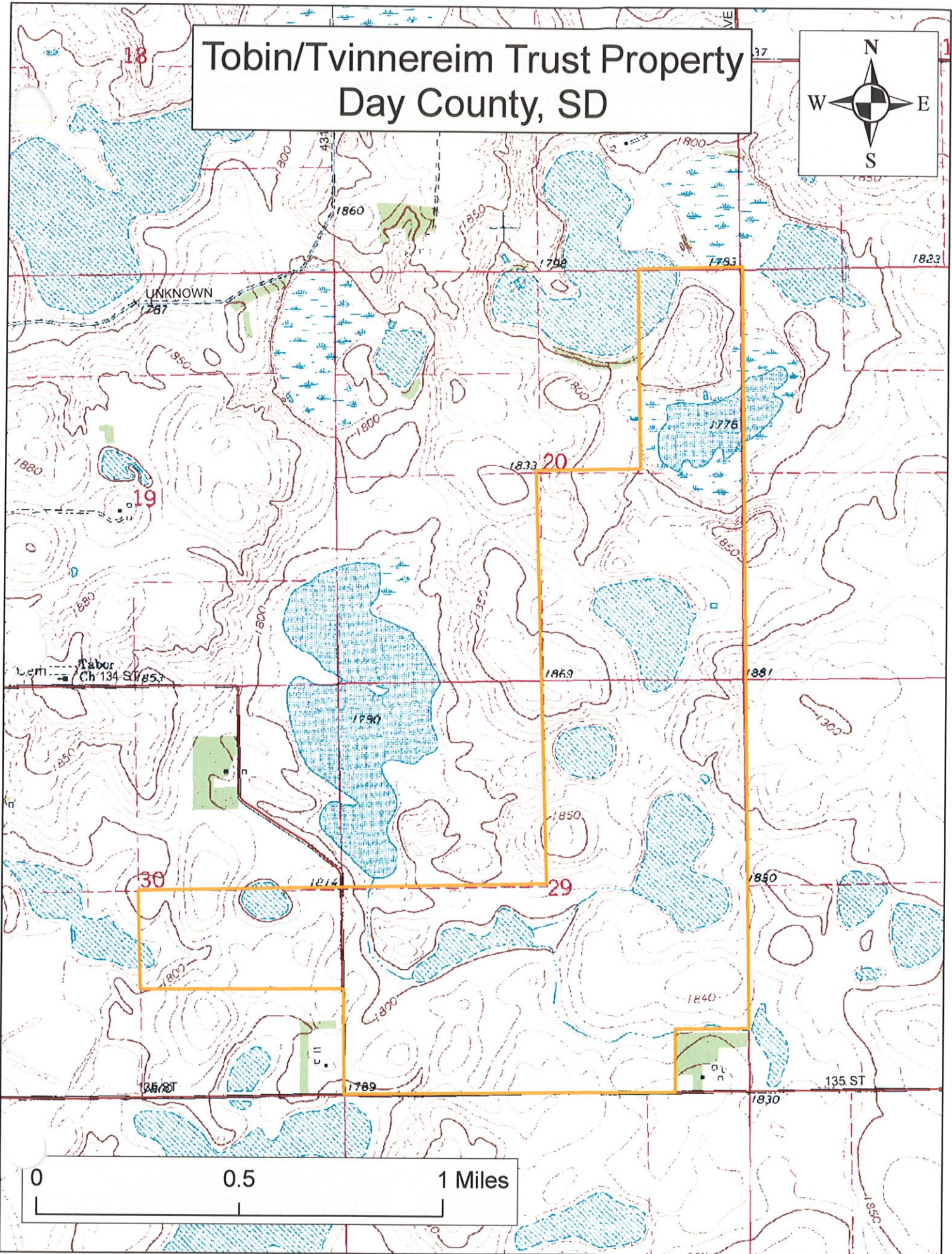
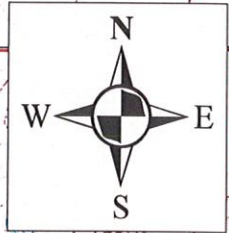
National Map: National Boundaries Dataset, National Elevation  
Graphic Names Information System, National Hydrography Dataset,  
National Land Cover Database, National Structures Dataset, and National  
Transportation Dataset; U.S. Census Bureau - TIGER/Line; HERE Road Data



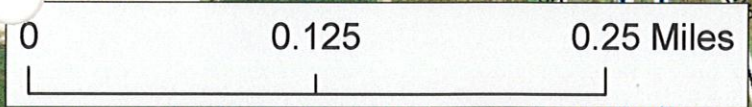
# Tobin/Tvinnereim Trust Property Day County, SD




# Tobin/Tvinnereim Trust Property Day County, SD



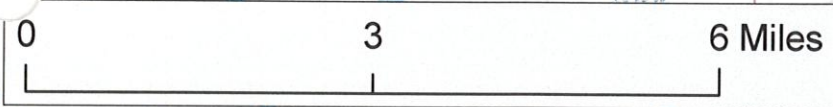
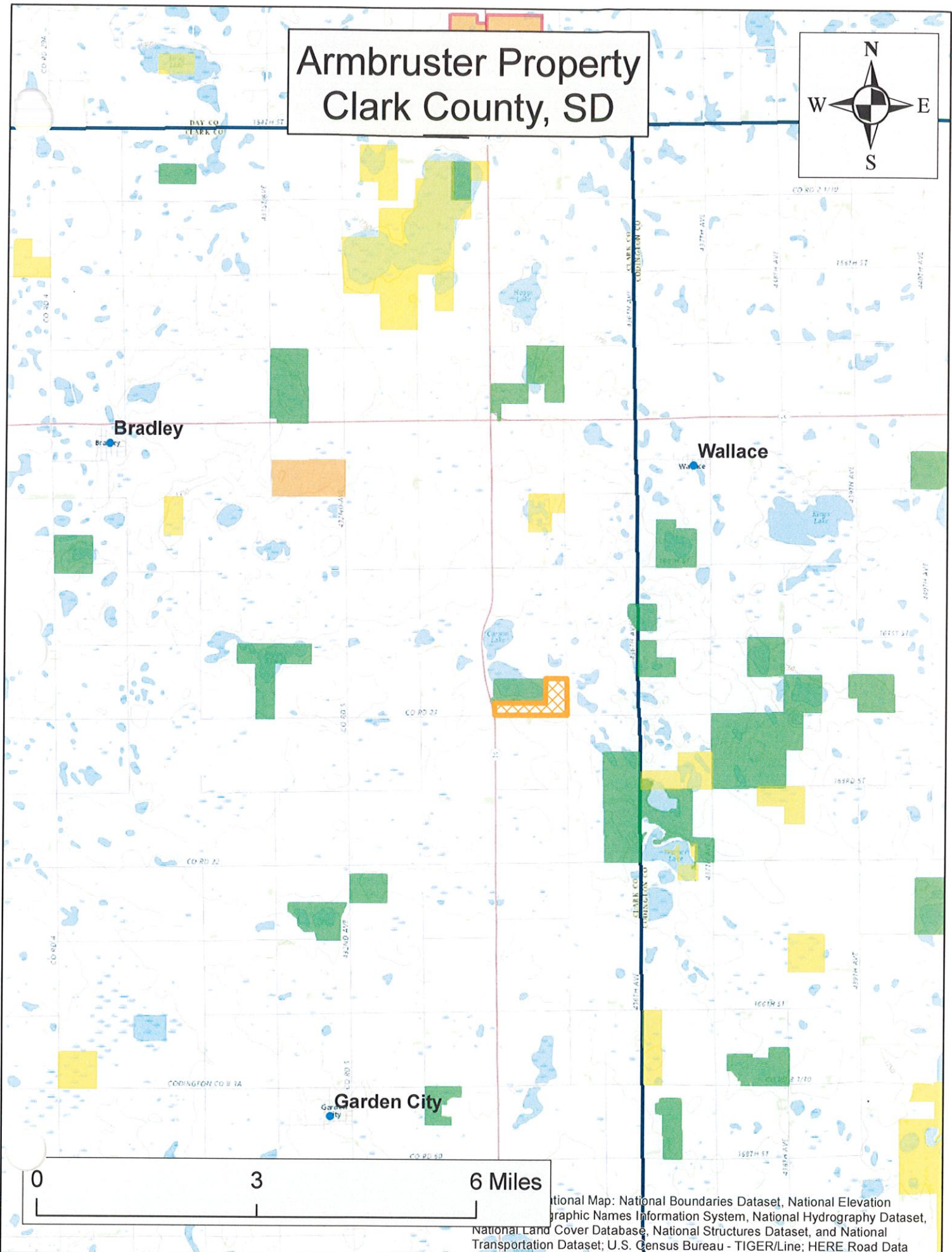
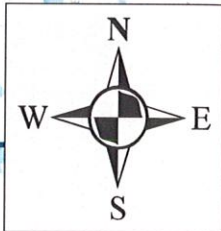
# Worthing GPA Donation Addition Lincoln County, SD



 Game Production Areas

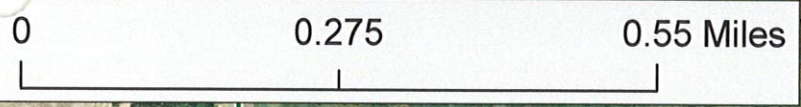
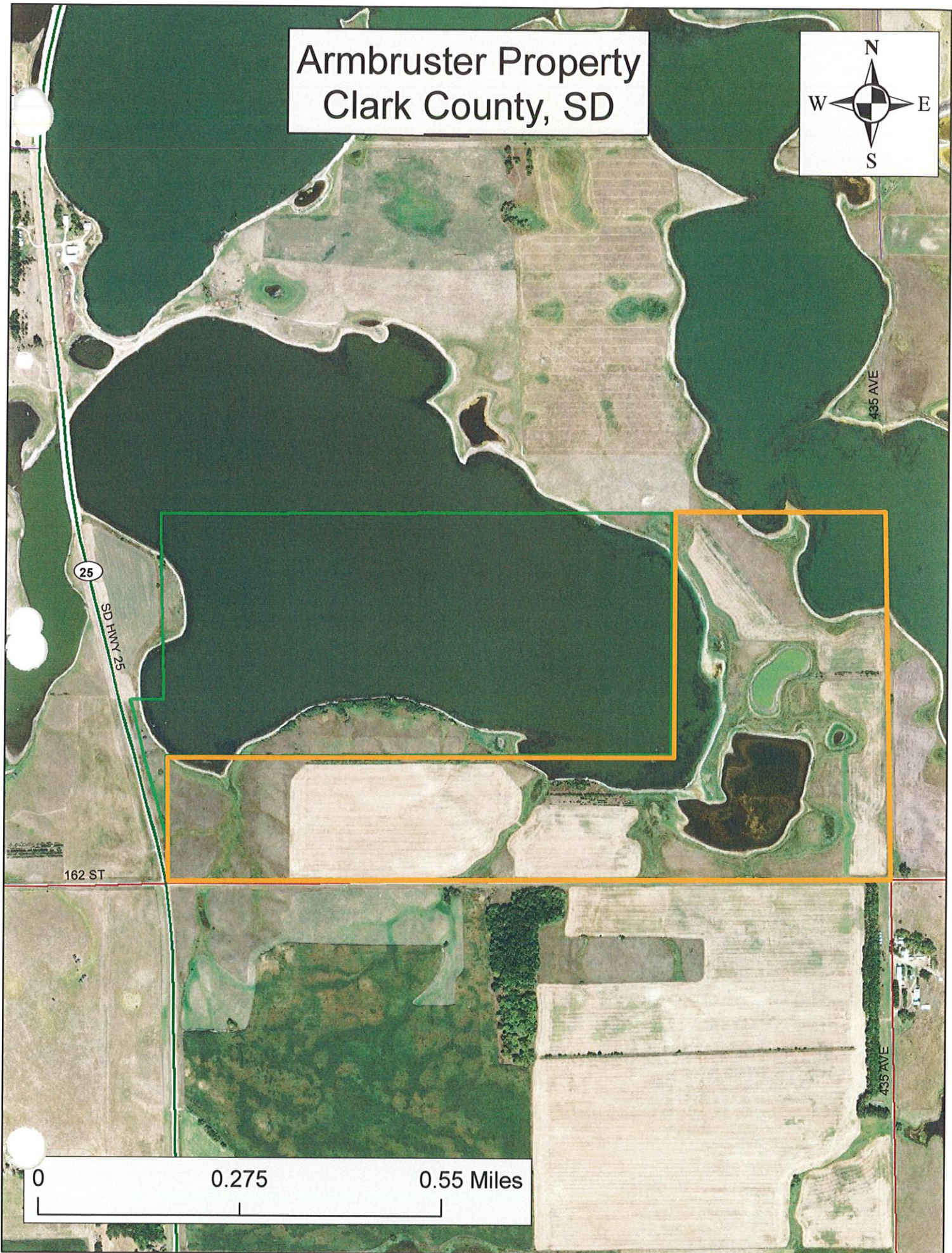
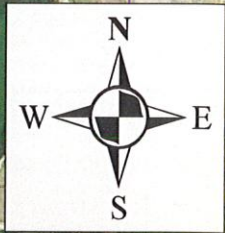
280 ST 280 ST

# Armbruster Property Clark County, SD

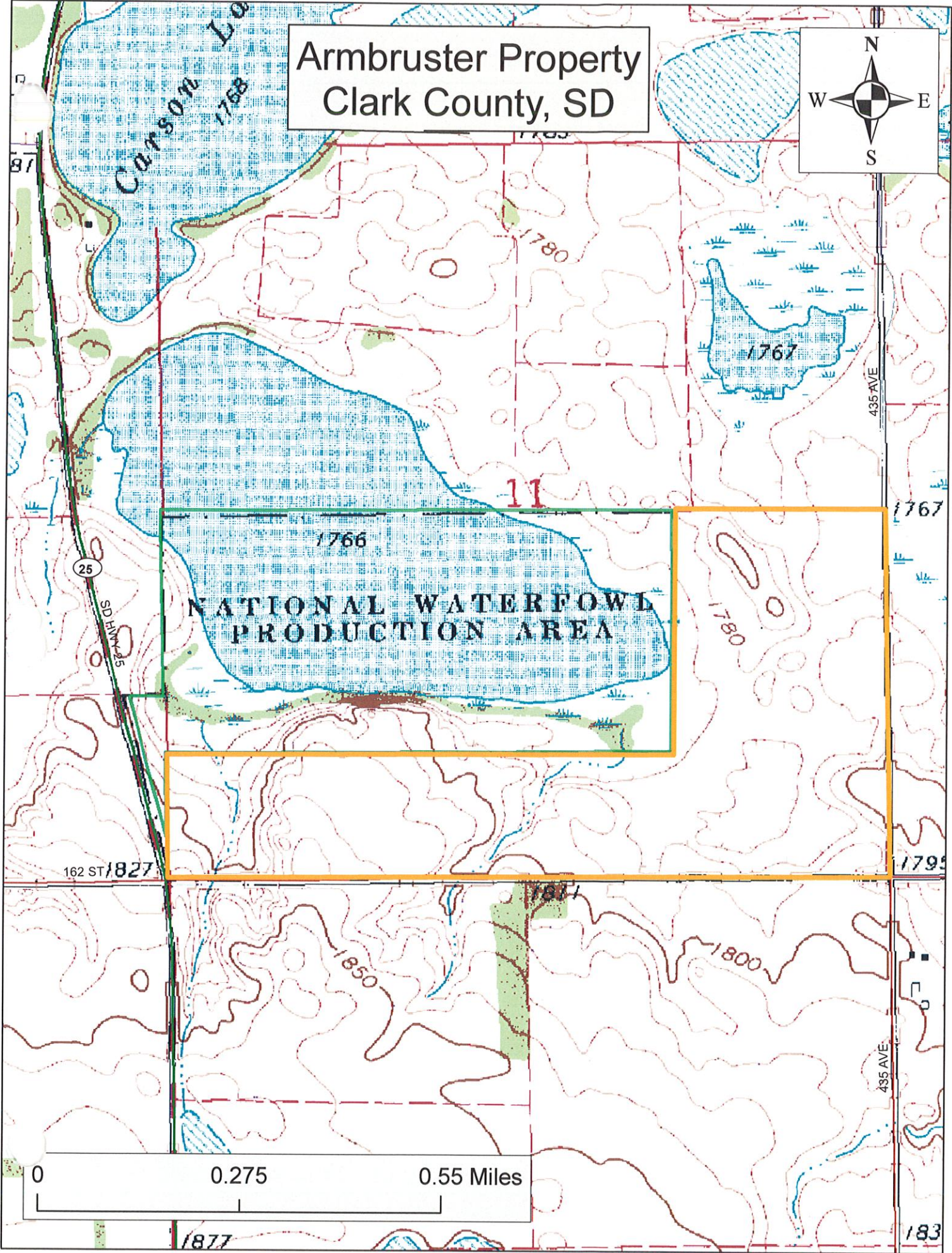
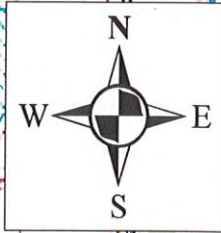


Additional Map: National Boundaries Dataset, National Elevation  
Graphic Names Information System, National Hydrography Dataset,  
National Land Cover Database, National Structures Dataset, and National  
Transportation Dataset; U.S. Census Bureau - TIGER/Line; HERE Road Data

# Armbruster Property Clark County, SD



# Armbruster Property Clark County, SD

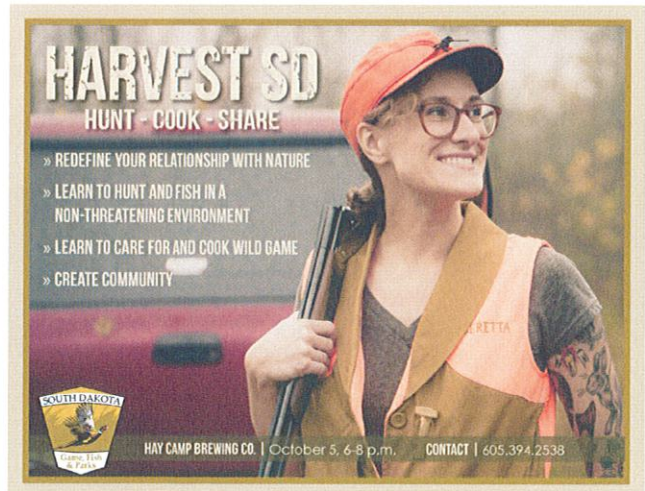


0 0.275 0.55 Miles

## Commission Update – Outdoor Education in Western South Dakota

### Outdoor Campus – Rapid City

- School field trip season is in full-swing
  - Mostly elementary
  - High School Career Launch (students spending time with GFP staff)
- Community programs emphasizing hunting, fishing, outdoor skills
  - Change-up in preschool offerings (drop-in DIY vs. formal classes)
  - Lots of interest in game cleaning & processing
- Fly Fishing 101
  - 14 air force personnel from Ellsworth AFB
  - Also doing fly tying
- Hunting 101
  - Fall class full, including 8 active duty air force personnel
  - Expanded to include separate Bowhunting 101 program (12 students)
  - Met with Black Hills State outdoor education students to discuss offering program there
  - Informal survey of SDSM&T students (via naturalist intern) to explore interest in hunting/fishing programs
- Harvest SD (similar structure to Hunting 101)
  - Kickoff event October 5
  - Targeted to young, adult non-hunters
  - Classes throughout October, culminating in hunts
- Events
  - Halloween Hike (October 27)
  - Turkey Trivia Trail (November 25)



### Custer State Park

- Events
  - Buffalo Round-Up (September 29)
  - Festival of Trees at Visitor Center (similar to Christmas at the Capitol)
  - Halloween Hike (October 27-28)



# License Sales Totals

(as of Sept 27)

*date updated: 27 Sept 2017*

<b>Resident</b>	<b>2017</b>	<b>2016</b>
Combination	44,394	45,139
Junior Combination	6,827	7,027
Senior Combination	8,576	8,047
Small Game	4,110	5,224
Youth Small Game	2,141	2,331
1-Day Small Game	212	272
Migratory Bird Certificate	20,999	22,551
Predator/Varmint	1,249	1,537
Furbearer	2,457	2,541
Annual Fishing	60,704	61,819
Senior Fishing	13,058	12,690
1-Day Fishing	5,860	5,755
Gamefish Spearing/Archery	2,879	2,694

<b>Nonresident</b>	<b>2017</b>	<b>2016</b>
Small Game	4,428	5,818
Youth Small Game	295	350
Annual Shooting Preserve	138	143
5-day Shooting Preserve	1,862	1,738
1-day Shooting Preserve	366	418
Spring Light Goose	4,492	3,965
Youth Spring Light Goose	159	138
Migratory Bird Certificate	684	634
Predator/Varmint	4,482	4,436
Furbearer	5	4
Annual Fishing	25,664	27,408
Family Fishing	9,238	9,596
Youth Annual Fishing	1,317	1,586
3-Day Fishing	22,539	23,527
1-Day Fishing	21,348	21,486
Gamefish Spearing/Archery	665	688
<b>TOTAL ON FILE =</b>	<b>271,148</b>	<b>279,562</b>