



AGENDA

Game, Fish and Parks Commission

May 5-6, 2016

Custer State Park – Creekside Lodge

US HWY 16A, Custer, SD

Call to order 1:00 PM MT

Executive Session – Discuss Pending Litigation

Division of Administration

Action Items:

1. Approve Minutes of the April 2016 Meeting
<http://gfp.sd.gov/agency/commission/docs/2016/april-meeting-minutes.pdf>
2. Additional Commissioner Salary Days
3. License List Request

Information Items:

4. Strategic Planning Update

Proposals

5. Deer Hunting Seasons

Open Forum

Petitions for Rule Change

6. Allocation of Any Deer License for Youth Hunting Season

Division of Parks and Recreation

Action Items:

7. Parks and Wildlife Foundation Land Donation

Information Items:

8. Roy Lake Resort Concession
9. Park Revenue and Camping Reservation Report

Division of Wildlife

Information Items:

10. Wetlands America Trust Addition to Swan Lake GPA – Clark County
11. Wetlands America Trust Addition to Odessa #1 GPA – McPherson County
12. Deer Management Plan Progress Report
13. Deer Population Report
14. Upland Game Hunting Season and Population Estimates
15. Turkey Management Plan Revision
16. Joint Monitoring of Forage on Forest Service Properties with USFS
17. Black Hills Fisheries Management Plan Implementation Update
18. 2015 Angler Survey Results
19. Spring Spawning Operation Report
20. 2016 License Sales Update

Adjourn

Next meeting information:
June 2-3, 2016
Ramkota Convention Center
Watertown, SD

Minutes of the Game, Fish, and Parks Commission
April 7-8, 2016

Chairman Peterson called the meeting to order at 1:00 p.m. CDT at the McCrory Gardens in Brookings, South Dakota. Commissioners Cathy Peterson, Barry Jensen, John Cooper, H. Paul Dennert, Gary Jensen, Russell Olson, W. Scott Phillips, and Jim Spies were present. Secretary Kelly Hepler was present along with approximately 80 public, staff, and media.

DIVISION OF ADMINISTRATION

Approval of Minutes

Chairperson Peterson called for any additions or corrections to the March 3-4, 2016, minutes or a motion for approval.

Motion by Dennert with second by G. Jensen TO APPROVE THE MINUTES OF THE MARCH 3-4, 2016 MEETING. Motion carried unanimously.

Additional Commissioner Salary Days

Commissioner Peterson requested one additional salary day for her participation in the Habitat Conservation Fund Board meeting.

Motion by Cooper with second by Spies TO APPROVE THE ADDITIONAL SALARY DAYS AS REQUESTED. Motion carried unanimously.

Pending Action Items from 2016 Legislative Session

Tony Leif, Division Director provided a summary of SB71 to revise the provisions regarding the issuance of small game licenses and fishing licenses to certain veterans at reduced fees and to revise certain provisions regarding special pheasant hunts for disabled veterans. Leif explained the changes will need to occur within administrative rule that will be presented to the Commission at upcoming meetings.

Leif also noted staff will be reviewing draft administrative rules in regards to fisheries management on private ponds on private lands as these individuals would like to be actively engaged, but currently there is not a statute or rule that allows. These rules will also be brought forward to the Commission for consideration.

The final piece of legislation Leif discussed was HB1075 to revise the area for certain open units where nonresident waterfowl licenses are issued. Leif explained how this bill modifies the counties where three day temporary licenses are available and that unlike most legislation that modifies state statute this one modifies administrative rule. He further noted that the Commission authority remains in place to make any adjustments deemed necessary and those licenses will be allocated just prior to it becoming effective in law on July 1st.

Public Hearing

The Public Hearing began at 1:57 p.m. and concluded at 2:17 p.m. and the minutes follow these minutes.

FINALIZATIONS

Custer State Park Bison Hunting Season

Gary Brundige, Division Staff Specialist presented the finalization to the Custer State Park non-trophy bison harvest season changing the opening date to the 2nd Monday in January. They also recommended reducing the number of cow licenses from ten to five and reducing the number of cow licenses allocated to residents in the first draw from five to three. No changes were made to the proposal

Motion by Spies with second by Jensen TO APPROVE THE FINALIZATION OF 41:06:60 CUSTER STATE PARK NON-TROPHY BISON HARVEST AS PROPOSED. Motion carried unanimously.

Elk Hunting Season: Black Hills, Custer State Park, Archery and Prairie

Assistant Director Tom Kirschenmann and Wildlife Program Administrator Chad Switzer presented the finalizations for elk hunting seasons noting the last few years have had good habitat conditions. The adopted management plan has a population objective range between 6,000 – 8,000 wintering elk. Information considered in developing the season recommendations considered results from the aerial survey, biological, survival information of collared elk, harvest data, and social info from public. This year was the second time the elk aerial survey (more of a census as it covered the entire Black Hills) was completed. Kirschenmann also noted that when recommendations were generated that questions and concerns were anticipated about the number of antlerless elk licenses. The expected comments are a result of the popularity of elk hunting and it is one of the most sought after license. Kirschenmann also noted that even with the recommended number of antlerless licenses, the model shows the population growing slightly. Because of the number of questions and concerns expressed, the department held an open house in Rapid City. Several staff was present to have one-on-one conversations to help clarify questions and concerns from 60-70 individuals from the public.

Kirschenmann pointed out that this is a two-year recommendation, however if unforeseen circumstances arise such as unpredictable environmental factors that the commission has the prerogative to make necessary adjustments next year. Over the next year the department will continue to monitor the herd and use survey information and hunter harvest data to assess the population. If something alarming or concerning is found, the department will bring forward appropriate recommendations to the commission.

Chairwoman Peterson asked about success rates of licenses. Kirschenmann answered that there is no expectation that all licenses will be filled. Kirschenmann noted hunter success rates on page: 6a and how phenomenal hunting success is in SD. The only exception witnessed that past few years of 100% success has been in Custer State Park.

Commission Cooper made a comment addressing the commonly asked questions of drought and reducing the herd, the possible mountain lion factor, and is the overall number of tags too many and could staff correct quick enough if situation happens again. Cooper expressed his satisfaction with safe guards in place within the plan which addresses people's concerns when they review the plan.

Commissioner Phillips expressed again it is a good plan with solid numbers. Some comments received from the public make sense and need to look at in another year. Open house was great. Glad to hear we can review in a year if needed.

Switzer noted the department has much better data on biological factors and long-term survival monitoring through radio collaring. The department is utilizing information in model to better manage the population.

Black Hills Elk Hunting Season

Switzer presented the finalization to the Black Hills Hunting Seasons as specified below with no changes from proposal.

1. Adjust the number of licenses available from 430 "any elk" and 500 "antlerless elk" licenses (total of 930 licenses) to 443 "any elk" and 1,255 "antlerless elk" licenses (total of 1,698 licenses).
2. Make adjustments to existing antlerless hunting units and create new antlerless hunting units.
3. Season dates for units H2B, H2E, H2H, H3B, and H3E would run from the Monday closest to October 15 through October 31.
4. Season dates for units H2C, H2F, H2I, H3C, and H3F would run from December 1 through the Friday closest to December 15.
5. Season dates for units H2D, H2G, H2J, H3D, and H3G would run from Saturday closest to December 15 through December 31.
6. Remove the language in administrative rule depicting the license type and number of licenses from each hunting unit.

Motion by G. Jensen with second by Cooper TO APPROVE THE FINALIZATION OF 41:06:26 BLACK HUNTING ELK HUNTING SEASON AS PROPOSED. Motion carried unanimously.

Archery Elk Hunting Season

Switzer presented the finalization to the Archery Elk Hunting Season to adjust the number of licenses available from 144 any elk and 56 antlerless elk licenses to 147 any elk and 140 antlerless elk licenses. They also recommended removal of the language in administrative rule depicting the license type and number of licenses from each hunting unit. There were no recommended changes to the proposal.

Motion by Dennert with second by Olson TO APPROVE THE FINALIZATION OF 41:06:43 ARCHERY ELK HUNTING SEASON AS PROPOSED. Motion carried unanimously.

Prairie Elk Hunting Season

Switzer presented the finalizations to the Prairie Elk Hunting Season as specified below with no changes from proposal.

1. Adjust the number of licenses available from 48 "any elk" and 50 "antlerless elk" licenses (total of 98 licenses) to 59 "any elk" and 90 "antlerless elk" licenses (total of 149 licenses).
2. Add that portion of Meade County north of the existing unit boundary, east of Interstate 90, south of SD Highway 34, and west of Middle Alkali Road to Unit 9A (See attached map). The Fort Meade Bureau of Land Management South Unit would be restricted to archery hunting only.
3. Change the season dates for Unit 15A from the second Saturday in September to October 31 and from December 1-31 to September 1 to October 31 and from December 1-31.
4. Change the season dates for Unit 27A from September 1 to October 31 to October 1-31 and December 1-31.
5. Remove the language in administrative rule depicting the license type and number of licenses from each hunting unit.

Motion by Spies with second by Dennert TO APPROVE THE FINALIZATION OF 41:06:59 PRAIRIE ELK HUNTING SEASON AS PROPOSED. Motion carried unanimously.

Custer State Park Elk Hunting Season

Switzer presented the finalization to the Custer State Park Elk Hunting Season to adjust the number of licenses available from 8 any elk to 9 any elk licenses and to remove the language in administrative rule depicting the license type and number of licenses from each hunting unit with no changes from proposal.

Motion by Phillips with second by Spies TO APPROVE THE FINALIZATION OF 41:06:27 CUSTER STATE PARK ELK HUNTING SEASON (ANY ELK) AS PROPOSED. Motion carried unanimously.

Custer State Park Early Archery Elk Hunting Season

Switzer presented the finalization to the Custer State Park Early Archery Elk Hunting Season to adjust the number of licenses available from 4 any elk to 3 any elk and removal of the language in administrative rule depicting the license type and number of licenses from each hunting unit with no changes from proposal.

Motion by Olson with second by B. Jensen TO APPROVE THE FINALIZATION OF 41:06:28 CUSTER STATE PARK EARLY ARCHERY ELK HUNTING SEASON AS PROPOSED. Motion carried unanimously.

Special Custer State Park Antlerless Elk Hunting Season

Switzer presented the finalization to the Special Custer State Park Antlerless Elk Hunting Season with one recommended change to the proposal to simplify the interpretation, but no change to season dates

1. Modify the unit boundary of CAE-CU1 and CAE-CU2 from within the boundaries of Custer State Park (CSP) to all of Custer State Park south and west of line beginning at the CSP west boundary and Lower French Creek Road southeast to Highway 87, north to Wildlife Loop Road (WL), southeast along WL to Oak Draw Road, east on Oak Draw Road to WL, south on WL to Lane Johnny Road, southeast on Lane Johnny Road to CSP east boundary fence, south then west then north along the CSP boundary fence to point of beginning.
2. Change the season dates for CAE-CU1 from nine consecutive days beginning on the first Thursday following the third Saturday of September to nine consecutive days beginning on the third Saturday following the third Saturday in September and for CAE-CU2 from nine consecutive

days beginning on the Tuesday following Native American Day to nine consecutive days beginning on the fifth Saturday following the third Saturday in September.

3. Increase the number of "antlerless elk" licenses from 0 to 20.
4. Repeal Unit CAE-ZZ1.

Recommended changes from proposal

1. Change the season dates for CAE-CU1 from nine consecutive days beginning on the first Thursday following the third Saturday of September to nine consecutive days following the close of CUE-CU1 and for CAE-CU2 from nine consecutive days beginning on the Tuesday following Native American Day to nine consecutive days beginning on the Saturday following the close of CAE-CU1.

Motion by G. Jensen with second by Cooper TO AMEND THE PROPOSAL OF 41:06:47 CUSTER STATE PARK ANTLERLESS ELK HUNTING SEASON AS RECOMMENDED. Motion carried unanimously.

Motion by Cooper with second by B. Jensen TO APPROVE THE FINALIZATION OF 41:06:47 CUSTER STATE PARK ANTLERLESS ELK HUNTING SEASON AS AMENDED FROM PROPOSAL. Motion carried unanimously.

Elk Hunting Seasons – Unit License Allocation

Kirschenmann and Switzer presented the finalization to the unit-specific allocations of elk hunting licenses with no recommended changes from proposal.

Motion by Spies with second by Cooper TO APPROVE THE FINALIZATION OF ADMINISTRATIVE ACTION (Appendix C) TO ELK HUNTING SEASONS AND UNIT LICENSE ALLOCATIONS AS PROPOSED. Motion carried unanimously.

Application for License

Kirschenmann presented the finalization to the application for elk license to amend current administrative rule to allow an individual to use preference points in the second drawing for elk hunting season with no recommended changes from proposal.

Motion by Olson with second by Dennert TO APPROVE THE FINALIZATION OF 41:06:01 APPLICATION FOR ELK LICENSE AS PROPOSED. Motion carried unanimously.

Waterfowl Hunting Seasons

Goose Hunting Season

Switzer presented the finalization to the goose hunting season to remove Brookings, Brown, Clark, Codington, Day, Deuel, Hamlin, Hanson, Hutchinson, Grant, Kingsbury, Lake, Lincoln, Marshall, McCook, Miner, Minnehaha, Moody, Roberts, Spink, Turner and Union counties from the open area with no recommended changes from proposal.

Motion by Cooper with second by Olson TO APPROVE THE FINALIZATION OF 41:06:16 GOOSE HUNTING SEASON AS PROPOSED. Motion carried unanimously.

Early Fall Canada Goose and Waterfowl Hunting Seasons

Switzer presented the finalization to modify the boundaries of unites 1 and 2 by adding those portions of Yankton, Clay and Union counties near the Missouri River to Unit 2 and change the start date from September 1 to the first Saturday of September with no changes from proposal.

Motion by Dennert with second by Cooper TO APPROVE THE FINALIZATION OF 41:06:50 AND 41:06:16 EARLY FALL CANADA GOOSE AND WATERFOWL HUNTING SEASONS AS PROPOSED. Motion carried unanimously.

Minimum Standard for Hunting with Air Guns

Andy Alban, program administrator provided the finalization to decrease the muzzle velocity in factory-rated air guns from 1,000 to 600 feet per second when hunting cottontail rabbit, red squirrel, fox squirrel, grey squirrel, and species defined as a predator/varmint in 41-1-1. Changes from the proposal would be to create a two-tiered approach to air gun performance specifications; one for .177 calibers and one for calibers larger than .177.

Motion by G. Jensen with second by Cooper TO AMEND 41:06:04 HUNTING REQUIREMENTS AND PROHIBITED METHODS AS RECOMMENDED FROM THE PROPOSAL. Motion carried unanimously.

Motion by Cooper with second by Olson TO APPROVE 41:06:04 HUNTING REQUIREMENTS AND PROHIBITED METHODS AS AMENDED FROM THE PROPOSAL. Roll call vote: Dennert-yes, B. Jensen-no, G. Jensen-yes, Olson-yes, Peterson-no, Phillips-no, Spies-no, Cooper-yes. Motion failed with 4 yes votes and 4 no votes.

Allowance for Trail Cameras on Public Land

Alban presented the finalization for the use of trail cameras on public lands as specified below with no recommended changes from proposal.

1. Amend 41:03:01:02 to address property that may be left on department lands.
2. Amend 41:03:01:19 to create an allowance for portable blinds on department lands and regulate their placement.
3. Promulgate a new rule to create an allowance for trail cameras on department lands and regulate their placement.

Motion by Olson with second by Cooper TO APPROVE THE FINALIZATION OF 41:03:01 USE OF PARKS AND PUBLIC LANDS AS REQUESTED. Roll call vote: Dennert-yes, B. Jensen-yes, G. Jensen-yes, Olson-yes, Peterson-yes, Phillips-no, Spies-no, Cooper-yes. Motion passed with 6 yes votes and 2 no votes.

OPEN FORUM

Chuck Dieter, Brookings, SD spoke on behalf of the South Dakota Waterfowl Association in regards to their concerns with House Bill 1075 on nonresident waterfowl hunting in South Dakota. He thanked the Department and Commission for their action on

nonresident waterfowl and noted the difficult situation the legislature has put them in by passing House Bill 1075. Dieter explained the original intent of the 1,500 nonresident waterfowl licenses were to be used for commercial hunting around Pierre and by moving these to the new area it breaks the original agreement. Dieter's recommendation would be to have GFP conduct a human dimensions project on waterfowl satisfaction and changing nonresident licenses around to reduce hunter stress on certain areas.

George Vandel, Pierre, SD spoke on behalf of the South Dakota Waterfowl Association and High Plains Wildlife Board. Vandel stated his group was part of the original agreement that developed temporary licenses by working with local hunters, sportsman's clubs and the legislature. Feel it is important for commercial interest of central South Dakota and concerned license are going to northeast portion of state. Vandel thanked the Commission and staff for their efforts on taking in public input and putting ideas together to come up with a plan. He further noted that his group is considering making elected officials accountable for their actions and aware of conservation.

Tom Yseth, Brookings, SD stated his family would rather miss a year hunting than see the nonresident waterfowl opened up. When unable to draw a waterfowl tag they go fishing and are noticing the large number of nonresident fishing. His family feels the fee for nonresident fishing licenses should be increased.

G. Jensen asked the Department to develop a plan on how to handle these types of issues as we know we will be asked to do something.

Hepler noted the need to be cognizant of staff and pay attention to what is happening on the water and what staff are hearing as well as needing to be prepared to provide the commission with the best information possible.

Cooper inquired whether it would be valuable to have communications staff put together an electronic option to take input on public experience instead of a large open public comment period instead of a survey.

PETITION FOR RULE CHANGE

John Almont, Sioux Falls, SD was present to provide information on the senior antlerless deer license petition he submitted to allow seniors to have one doe deer tag for West River or East River at a cost of \$10.00.

Leif explained the Commissions options to accept the petition as proposed and amend the administrative rule or take action to reject the petition by a resolution stating the reasons why.

Per the request of the Commission, Leif presented a resolution outlining reasons for denial of the petition for the Commissions consideration.

Leif noted the Department is in the process of crafting a statewide deer management plan with the assistance of public input via a deer stakeholder group to be utilized in recommendations of management through license allocations. With this in mind, in lieu of initiating rule-making proceedings at this time the appropriate approach would be to discuss the possibility of allowing a senior antlerless license with the deer stakeholder group through this planning process prior to making a recommendation on the alternative of an allowance for a senior antlerless license.

Motion by Cooper with second by Phillips TO ADOPT RESOLUTION 16-04 (Appendix B) DENYING THE PETITION WITH THE CAVEAT FOR DISCUSSION OF SENIOR LICENSES IN THE DEER MANAGEMENT PLAN WORKGROUP MEETINGS. Motion carried unanimously.

DIVISION OF PARKS AND RECREATION

Spearfish Canyon Foundation Land Donation

Al Nedved described the property in spearfish canyon as isolated not part of spearfish falls or the devils bathtub noting the remote property will not developed for trails, but possibly used as a land transfer with US Forest Service. Nedved further explained that it is public property and will remain in the public trust per the foundations request. The Lawrence County Commission was informed of the land donation no response received.

Motion by Spies with second by Dennert TO ACCEPT THE GIFTED PROPERTY FROM THE SPEARFISH CANYON FOUNDATION LOCATED IN LAWRENCE COUNTY TO BE USED FOR PARKS AND RECREATION USE. (Appendix A). Motion carried unanimously.

Status of Trevarton Murdock Lawsuit

Staff Attorney Dick Neill provided an update on the lawsuit filed two years ago by landowners in Fall River County who wanted to set aside a portion of the Mickelson trail that runs through their property. Neill stated that a year ago the Federal District Court in Rapid City dismissed the lawsuit and the plaintiffs appealed to the Eighth US Circuit Court in St. Louis. Recently the Circuit Court upheld the District Court decision to dismiss therefor the Mickelson Trail will remain open in Fall River County to public use under the recreational trails act. Neill noted that prior to the Circuit Court decision attorneys from the Attorney General's office approached the landowners with a limited use agreement of the trail for ranching purposes. We are hopeful they will take advantage of the opportunity.

SDSU Park Management Program

Jeff VanMeeteren, Regional Supervisor introduced Barry Dunn, Dean of the College of Agriculture and Biological Sciences at South Dakota State University. Dean Dunn provided an overview of the park management program and its return to the college of agriculture and biological sciences pending Board of Regents approval. Dunn further noted the plan to work with GFP staff to develop the curriculum.

Capitol Campout

Division Director Katie Ceroll informed the Commission on the capitol campout to be held June 10-12. This is a new event for South Dakota invites families to tent camp at capitol as a way to encourage families to enjoy the outdoors. The event is open to 100 families and will be hosted by parks and wildlife staff and other partners. The registration process will roll out next online. Saturday has been designated as outdoor university day with variety of activities available from 10:00 a.m. – 4:00 p.m. to campers and the public.

Go 4th Program/Park Prescriptions

Ceroll informed the Commission that the Go 4th program idea from the National Parks Service will continue again this year. This program provides fourth grade students free daily park pass and once utilized they can be redeemed for \$6 discount to annual pass or free subscription to digest.

Ceroll also explained the Park Prescriptions Program that partners with Avera Mental Health and mirrors the Go 4th program to get a prescription like the go 4th pass funded by a Department of Health grant. Last year 2000 prescriptions were written with only a dozen returned so this year's tool kit for doctors will include literature for waiting rooms for mental, physical and emotional health describing the benefits of going outdoors and will roll out mid-June.

Park Revenue and Camping Reservation Report

The park revenue and camping reservation report was provided by Ceroll. The report includes a year to date comparison of revenue by line and March 2016 year to date comparison by district item. Ceroll reminded the Commission that effective January 1, 2016 the Mickelson Trail daily pass increased from \$3.00 to \$4.00 and the Custer State Park temporary daily vehicle pass increased from \$15.00 to \$20.00 and despite the increase there continues to be increase use. Ceroll also stated it's early in the camping season, but trending show an 11 percent increase from last year with the exception of Newton Hills which experienced poor weather.

DIVISION OF WILDLIFE

SD Pheasant Management Plan

Switzer provided the Commission an update on the pheasant management plan noting changes from the previously drafted version to include a list of best management practices. Other recommended changes to the plan include working with Scott Taylor, pheasant plan coordinator regarding CRP and farm bill program allowing further opportunities to work with landowners and agriculture partners to better integrate habitat into landowner management decisions. The Pheasant Habitat Workgroup recommendations are also listed as appendix. Switzer stated some of the recommendations have already been implemented and others are currently in process.

Motion by B. Jensen with second by Spies TO ADOPT THE PHEASANT MANAGEMENT PLAN AS PRESENTED. Motion carried unanimously.

Land Acquisition Guidance Document

Paul Coughlin, program administrator presented the Commission with the wildlife divisions land acquisition guidance document that will describes the priorities and principles. The priorities include: additions to existing game production areas and water access areas, lake and river access, and important habitat types, landscapes and recreational opportunities. Coughlin further explained the guidelines for acquisition will be in regards to the process, economics and land ownership and stewardship.

Land Acquisition Projects

Coughlin provided the Commission with the current land acquisition and disposal report. Early development projects include the Wetlands America Trust Addition to Swan Lake GPA consisting of 240 acres of land in Clark County and the Wetlands America Trust Addition to Odessa #1 GPA containing 80 acres of land in McPherson County. Both projects are expected to close in July 2016 if approved by the Commission.

East River Fisheries Management Plan Implementation update

Biologist Dave Luchessi provided the Commission with an update on the East River Fisheries Management Plan highlighting on the objectives for projects stating work has been done on 14 of the 16 objectives within the plan. It was noted that 18 habitat projects have been completed and 2 more have been scheduled, they are working with SDSU to collect quantitative data and 9 new piers have been installed with 2 more scheduled.

Regional Terrestrial Resource Supervisor positions

Kirschenmann informed the Commission on the status 4 new Regional Terrestrial Resource Supervisor positions. Recently the job descriptions and class specifications have been approved through Bureau of Human Resource and will be advertised in the near future. These positions will be supervisor positions one in each region, and are responsible for preparing and implementing management plans as well as other administrative duties.

Results of Animal Damage Control Cooperator Survey

Cindy Longmire, Human Dimensions Specialist presented results from animal damage control services customer satisfaction survey. The survey rated the overall satisfaction of landowners at 80 percent and specifically highlighted on their ability to contact staff, staff response time to initial contact, explanation received, direct response time and periodic updates on progress. The survey also noted beaver damage, livestock loss caused by predators, and property damage for 2013 -2014.

Winter Depredation Activities Report

Keith Fisk, Program Administrator presented a powerpoint on the Wildlife Damage Management programs winter depredation activities. Fisk noted the funding source is provided by the surcharge on hunting licenses and federal Pitman Robinson grant. He also explained the management tools used which will lead to a long term reduction in expenditures.

Habitat Workshop Recap

Emmett Keyser, Regional Supervisor updated the Commission on the habitat workshop events held throughout the state. Keyser's update highlighted key points from

each region. In region 1 focused their workshops on habitat development for big game and western wildlife species. Region 2 showed interest, but attendance was low due to the mild spring weather. Habitat workshops in region 3 centered on private land habitat. Region 4 also focused on private land habitat specifically recommending providing landowners with examples to be implemented at future events.

Enemy Swim and Stony Point (Kampeska Lake) update

Scott Lindgren, Regional Supervisor explained the role GFP plays in regards to shoreline alterations per administrative rule. Lindgren also provide an update on the July 2015 violation at the Enemy Swim alteration that resulted in deferred prosecution where the violator has agreed to restore the area if it does not restore itself. An update was also provided on the permit received 6 months ago from an individual looking to develop 16-20 lots which also requires city approval due to the location. Once city approval is obtained the developer will modify his permit and resubmit for approval. Lindgren further explained if an individual is going to disturb land along lake they need to contact GFP and obtain a permit.

National Hunting and Shooting Sports Action Plan

Jason Kool, Division Staff Specialist presented a powerpoint explaining the National Hunting and Shooting Sports action plan to help recruit, retain and reactivate hunters. The plan was a collaboration of partners including the Wildlife Management Instituted and Council to Advance Hunting and Shooting Sports. Kool stated the plan will be used as a guidance document for states, NGO's and the industry to accomplish two main goals of increasing participation and support in hunting and shooting sport. Kool also presented the key strategies to achieve these goals and statistic on resident and nonresident fishing and small game license state by participation over the last 10 years by age and gender.

2016 License Sales Update

Chief Scott Simpson provided the licensed sales report as of April 1, 2016 for all resident and nonresidents for all license types. Simpson noted resident license sales are up 8 percent due to the mild weather ice fishing season and angler success. Annual fishing licenses sales are up 17 percent for residents and an increase of 13 percent for nonresident anglers.

Adjourn

Motioned by Olson with second by B. Jensen TO ADJOURN THE MEETING.
Motion carried unanimously and the meeting adjourned at 10:50am

Appendix A

RESOLUTION 16- 03

WHEREAS, Spearfish Canyon Foundation, successor in interest to Spearfish Canyon Land Trust, owns real estate (Property) described as:

Red Cross, Tarius, Claudius, Mitiades and Mark Anthony Iode mining claims of Mineral Survey No. 1224, located in Section 16, Township 5 North, Range 2 East, Black Hills Meridian, Lawrence County, South Dakota, as defined and described in patent of record; and

WHEREAS, Spearfish Canyon Foundation desires to gift the Property to the South Dakota Department of Game, Fish and Parks (Department) to be used for park and recreational purposes; and

WHEREAS, the Department has evaluated and determined that the Property would be conducive for use for park and recreational purposes; and

WHEREAS, the Department is authorized to accept gifts of property for park and recreational purposes per SDCL §§ 41-2-19 and 41-2-24;

NOW, THEREFORE, BE IT RESOLVED, that the South Dakota Game, Fish and Parks Commission does hereby authorize the Department to accept the gift of the Property from Spearfish Canyon Foundation to be used for park and recreational purposes.

BE IT FURTHER RESOLVED that the South Dakota Game, Fish & Parks Commission, on behalf of the citizens of South Dakota, does hereby acknowledge and express its deepest appreciation and gratitude to the Spearfish Canyon Foundation for its generosity, and further acknowledge the benefits this gift will provide the public for park and recreational use.

Appendix B

RESOLUTION 16- 04

WHEREAS, John Almont of Sioux Falls, South Dakota, submitted a Petition to the Game, Fish and Parks Commission (Commission) dated March 22, 2016, requesting that the Game, Fish and Parks Commission amend ARSD 41:06:21 (East River Deer Season) and ARSD 41:06:20 (West River Prairie Deer Season) to allow senior citizens to receive one doe deer tag at a cost of \$10 for either the east river or west river deer seasons for the reason more fully set out in the petition (hereinafter referred to as "the Petition"); and

WHEREAS, all members of the Commission have been furnished with and have reviewed a copy of the Petition; and

WHEREAS, the Commission has been advised that a copy of the Petition has been served on all members of the Interim Rules Review Committee and Director of the Legislative Research Council as required by SDCL § 1-26-13; and

WHEREAS, the Commission has been advised that SDCL 1-26-13 requires that within thirty (30) days of submission of a Petition the Commission shall either "deny the petition in writing (stating its reasons for the denials) or shall initiate rule-making proceedings in accordance with SDCL 1-26-4."; and

WHEREAS, the Commission has been advised and is of the opinion that a hearing on the Petition is neither statutorily required nor necessary; and

WHEREAS, the Commission has reviewed and carefully considered the requirements and procedures set out in SDCL 1-26-13 and the contents of the Petition, including the reason advanced by Petitioner in support of his request to amend ARSD 41:06:21 (East River Deer Season) and ARSD 41:06:20 (West River Prairie Deer Season) to allow senior citizens to receive one doe deer tag at a cost of \$10 for either the east river or west river deer seasons; and

WHEREAS, antlerless deer harvest is one of the most important variables affecting the population dynamics of deer herds; and

WHEREAS, the Department is currently in the process of developing a statewide deer management plan, with the assistance of public input via a deer stakeholder group, which will cover an array of management activities including elements such as license and tag allocations; and

WHEREAS, at this time the appropriate approach would be to discuss the request of a senior antlerless license with the deer stakeholder group through this planning process prior to making a recommendation on the alternative of an allowance for a senior antlerless license.

NOW, THEREFORE, BE IT RESOLVED, that the Commission does hereby deny the Petition for the reasons hereinabove stated in this Resolution, which said Resolution as

adopted by the Commission shall constitute the Commission's written denial of the Petition and its reasons therefore.

BE IT FURTHER RESOLVED that the Petition, a record of the Commission's discussions concerning same, and this Resolution be made a part of the Minutes of the Commission meeting at which this Resolution is adopted, and further, that the Department be and it is hereby authorized and directed in compliance with SDCL 1-26-13 to serve a copy of an extract of that portion of the Commission minutes which pertain to the Commission's discussion of the Petition and its adoption of this Resolution, including a copy of the Resolution, on all members of the Interim Rules Review Committee and Director of the Legislative Research Council with copies also to be provided to the Petitioner, John Almont of Sioux Falls, South Dakota.

Appendix C

2016 and 2017 Elk Hunting Seasons

Black Hills Firearm Elk				
Unit	Any Elk Licenses		Antlerless Elk Licenses	
	2015	2016 & 2017	2015	2016 & 2017
H1A	75	75		
H1B			40	30
H2A	250	250		
H2B			400	200
H2C				150
H2D				50
H2E				200
H2F				200
H2G				125
H2H				25
H2I			25	
H2J			25	
H3A	80	80		
H3B			60	15
H3C				15
H3D				15
H3E				50
H3F				50
H3G				50
H4A	0	8		
H5A	5	5		
H7A	15	20		
H7B			0	20
H9A	5	5		
H9B			0	10
TOTAL	430	443	500	1,255

Archery Elk				
Unit	Any Elk Licenses		Antlerless Elk Licenses	
	2015	2016 & 2017	2015	2016 & 2017
H1A	25	25	5	10
H2A	85	90	44	115
H3A	27	25	7	10
H4A				
H5A	2	2		
H7A	5	5	0	5
H9A				
30A				
TOTAL	144	147	56	140

Prairie Elk				
Unit	Any Elk Licenses		Antlerless Elk Licenses	
	2015	2016 & 2017	2015	2016 & 2017
9A	10	10	20	40
11A			8	10
11B	10	12		
11C	8	12		
11D			12	20
15A	10	10	10	10
27A	10	15	0	10
30A				
TOTAL	48	59	50	90

Custer State Park Elk				
Season	Any Elk Licenses		Antlerless Elk Licenses	
	2015	2016 & 2017	2015	2016 & 2017
Archery	8	9		
Rifle	4	3		
Special Antlerless Units				
CAE-CU1			0	10
CAE-CU2			0	10
TOTAL	12	12	0	20

Public Hearing Minutes of the Game, Fish and Parks Commission
April 7, 2016

The Public Hearing Officer Scott Simpson began the public hearing at 1:57 p.m. at the McCrory Gardens in Brookings, South Dakota with Commissioners Cooper, Peterson, Jensen, Jensen, Phillips, Dennert, and Spies present. Simpson indicated written comments were provided to the Commissioners prior to this time and will be reflected in the Public Hearing Minutes. Simpson then invited the public to come forward with oral testimony.

Custer State Park Bison

No oral or written testimony was received

Elk Hunting Seasons

Ron Hillestud, Volga, SD,"inquired about the goal for number of elk in Custer State Park.

Dave Jennings, Oelrichs, SD emailed, "I would like to encourage the GFP commission to accept the recommendation for the proposed elk season. You have a good elk management plan developed with input from all the stakeholder groups. It makes sense to follow it."

Trent Hitunen, Custer, SD emailed," After reading the current elk harvest proposal for the 2016 season I felt compelled to share my view. I understand there is not one simple answer to manage the elk herd. I do however feel it is vital for the GFP and Commission to take into account the views of the public to assist in the management of game populations. From what I understand there is a proposal to give out 20 antlerless permits in Custer State Park. I cannot understand the logic behind this proposal. With current CSP numbers around 455 elk and the CSP elk goal of around 800 elk this is a "shortfall" of around 350 elk. Shooting cows in CSP will not only be detrimental to the overall number it completely goes against the management objective. It has the potential to cause a stagnant growth for a few years or worse yet a declining population over the next few years. If the goal is to "protect" the grasses in the south end of the park I would like to see some current data supporting the decision to harvest antlerless elk. CSP has been gaining on the number of elk needed to reach the management goal and the harvest of antlerless elk would do nothing but deteriorate the gains made in the last few years. As far as increases in the H2 and H3 units I can see an increase in H2 as there are enough elk to increase the opportunity. But I do not understand why GFP has to have such a significant increase it seems more plausible to take smaller steps over the next few years and re-evaluate year after year. It just seems the GFP is on to much of a roller-coaster tag issuing system. The H3 unit I do not believe can support an increase in the number of elk tags. I spend a lot of time in the H3 unit throughout the year and in my opinion the number of elk reported in the H3 unit is overstated by a fairly significant number. Thanks for your time."

Travis Sivertsen, Ree Heights, SD, emailed, "I'm concerned about the direction I see our states GF&P headed. I see our seasons getting longer, primitive weapons restrictions getting more lax and tag numbers rising.

The raise proposed for the antlerless elk tags sounds a little dramatic. I know they did a helicopter survey but how many elk that were counted came from the Wyoming side? I understood it was a winter count? If this is true a large number of those elk could have migrated in. I went on hunts with friends who had tags in H2 the last two years. The numbers we saw weren't great. What if you double the cow tags like proposed and we have a bad winter kill or a low percentage of calves survive the next year. Were back to poor elk numbers in the hills. These tag increases should be done in small amounts.

The late season antlerless rifle deer season is not needed. They have depredation tags if a landowner has a problem with deer numbers. The deer are in survival mode and don't need the extra stress of being hassled by rifle hunters driving thru their wintering grounds. In case the GF&P hasn't seen this, most rifle hunters won't get out of their pick up. It would be nice to see at least a trial of a 9 day season with the start date moved back a week so it's not in the middle of the rut. The two week season was put in because of one bad winter, people couldn't get out to hunt. We haven't had a winter like that in a long time but we still have the season. I think we would see better trophy quality and the meat hunters would still have good success. If a person can't get out to hunt in 9 day season hunting isn't real high on their list of priorities. The GFP should look into amount of complaint calls during rifle season in Hand and Hyde counties. I think they will see there is a very high number. There are way too many people with tags and nowhere to hunt.

I received an E-mail from the GFP about removing shed antlers from GFP land being illegal. This is a ridiculous rule. They want youth to get involved in the outdoors and then they push rules like this. As I read it, this rule also includes mushroom hunting and there are a lot of families that enjoy that as well. The public paid for that land and should be free to use it. I know of two cases of people caught shed hunting on private ground. They were caught red handed and the land owners pressed charges against them but they never received any sort of fine. This makes it look like either the GFP or the court system has zero respect for landowners. I think the GFP needs to revise their punishments for game violations. The punishment doesn't fit the crime when some guys poach 20 some deer, end up with a \$750 dollar fine, and loss of license for a year. I would think that should be permanent loss of license in South Dakota and loss of firearms plus a larger fine. I know there will be civil charges also but its still to low.

Leon Cain, Hot Springs, SD, emailed, "To the South Dakota game fish commissioners, Too many elk, not enough elk? This is a waste of everybody's time. You have one problem, the vast majority of people that get an elk tag can't hunt, don't know how to hunt, or think they can kill an from there pick-up window. They spend more time winning about there's no elk, than getting out there and hunting. AND if they get up on the elk they can't hit one! We have seen this time and time again. Please don't put more fools like this out in the woods! 27A had 60 cow tags issued, 14 were killed. There no reason that more elk should have been killed, in 27A there is 60 elk standing off HWY 18 every day! Your problem is your hunters, first, then lets talk numbers."

Nancy Hilding, Black Hawk, SD wrote, "As your season/hunting area overlap Jackson, Melette and Bennet County your overlap with "Indian Country" Jackson is on reservation and Melette and Bennet former reservation land area that is not checker board

jurisdiction. Elk have no clue on tribal/nontribal jurisdictions boundaries. Tribes and SD GFP need to cooperate and consult."

Eric Grenz, Rapid City, SD wrote, "I support increasing the total elk population objective much higher support the land owners of deeded land with depredation tags or on call depredation hunts. Forest service lease holders should not get as much aid until conditions become extreme as their lease rates are not fair market value. I live in unit 7 north of Johnson siding and would like to see the elk population return. Thank you."

Bill and Lisa Miller, Hot Springs, SD, emailed, "We would like to voice our opinion about the number of elk licenses slated to be issued for the 2016 hunting season. We feel the number should be increased due to the amount of damage the elk cause to our property including the amount of our forage they eat, the amount of fences which they destroy, and the number of hay bales which are destroyed if they are left in the field a day too long. The elk create a massive amount of labor intensive work, which some of which could be reduced if the number of possible harvested animals is increased. This elk situation gravely affects our livelihood and costs us so much financially and also our time management is affected because of the requirements the large herds of elk cause. We also feel it would be more humane to offer more licenses to hunters rather than having the large herds on the highway where the general public is now in danger because it is extremely difficult to avoid the large herds of elk in the roadways, especially during the dark hours. Statistically, there were more elk killed on Highway 18 by motor vehicles than were harvested during the 2015 elk season for the unit located here near Minnekahta Junction. Thank you for your time listening to our concerns."

Dylan Deuter, Ree Heights, SD, emailed, "I believe you a putting out to many cow tags AGAIN. What happened to slow and steady +750 extra cow tags looks like a lot to me. If cows are such a problem for ranchers on public ground then I think they should be issued 2 cow tags to be killed on their own privately owned land. NO GUARANTEE BULL TAGS for land owners, but can apply with every one else for a bull tag. I have been told that the reason that you will not split up H2 into two separate units for any elk was to simplify things, your proposals now do NOT look that simple so what gives. Do you think cow hunters are that much more intelligent than bull hunters? I believe the December season should gone for ever. I moves elk around when they should be resting an conserving energy to make it threw a tough winter to come. As a land owner east river most of our problems come from late seasons: poaching, trespassing, and forcing deer into large groups where they could potently cause a depredation problem.

I was lucky enough to draw an archery Any Elk tag in 2015. It was a great hunt, Best elk hunt i have ever been on in comparison to Montana and Wyoming limited entry areas as well. However I hunted 25 days of the season. I had seen elk every day and heard elk every day, but it took 15 days before I had seen my first cow of the season. So I do not believe you should be increasing cow tags at all. In Custer State Park if you don't have enough elk to put out more bull tags. Why would you turn out 20 cow tags. Don't increase cow tags in H2. Do away with land owner bull tags. No more December season. Don't kill any cows in the Park"

Brent Phillips, Rapid City, SD, wrote, "We are new land owners in southern Custer County. My wife and I own 517.5 acres (two distinct parcels) of the most beautiful land in the Black Hills. We are about 3 miles southwest of Wind Cave Park. We bought the land for the sole purpose of providing habitat for elk, deer, turkey and other wildlife as well as a place we can go on weekends away from the busy work life of Rapid City. The land is primarily treed and serves as an excellent bedding and calving area for elk and last Fall we say dozens of elk each day. I am a hunter, have been for decades and enjoy hunting and seeing game in our Black Hills.

I understand there are a few land owners in my area that have had significant influence on opinions related to the elk population, harvest quotas and are being quoted as saying they want all elk gone. That would be a significant travesty for our area. Providing the opportunity for 150 elk cows to be harvested in this area in a single year seems excessive. I grew up in Idaho and have seen successful and unsuccessful game management strategies. The elk are a resource that we need to carefully manager for our generation and generations to come. I do not believe a very small minority should have any influence beyond their share.

I am a land owner, my wife is a land owner and we appeal to you to consider our needs and desires to have elk, to support their growth in our region and have personally taken the next step and become land owners to help preserve our wildlife. I would suggest a more modest harvest of 25-30 cows per season or 75-90 tags would be more appropriate. I would reduce population and provide hunting opportunities. Regarding the remedy of the few who lose grazing or alfalfa production due to elk, there are funds to help compensate them and despite stated losses of \$50,000 per year and payments of \$10,000 per year there might be a compromise somewhere in between the two figures.

We moved to the Black Hills for several reasons, one was the outdoors and wildlife. I am an avid outdoorsman and hunger. I mentor disadvantaged kids and help them achieve their hunter safety certificate and take them on their first deer hunt as well as spend time helping them develop skills and take on responsibilities. What a wonderful opportunity to serve and live in the Black Hills. We have invested in supporting our passion and appeal to you to take all of these issues into account before you make a decision. Call me anytime if you want to talk about my comments or discuss solutions. Thank you for your time."

Ryan Cuny, Hot Springs, SD, emailed, "Within the last nine months I moved back to Hot Springs, Southern Black Hills, to enjoy the wildlife and outdoors with my wife, two boys and daughter. As I review your plan to increase the Elk Cow tags in Unit three for the next two seasons, I am very concerned with the damage it will cause to the total Elk population. As I hope to draw a tag someday or just listen and photograph the bulls bugle in the fall, it seems with the route of your plan, it is going to strongly diminish the current herd for future years. Please consider the ramifications of how these extreme actions are going to effect the Black Hills elk conservation in Unit three."

Sean Fulton, Rapid City, SD, emailed, "I recently attended the public meeting in Rapid City about the 2016 elk proposals and feel that the SD GFP is working in the right direction. There are a few things that concern me and I would like to mention them. I am

not a biologist but do spend immense amounts of time in the black hills mainly hunting and hiking. I have noticed and believe the elk population to have increased from a few years ago but do not feel that the numbers are any where near what they were 10+ years ago. Large areas of canopy having been eliminated in the hills due to bug tree kill off, has created massive increases in forage not only for the ungulates like deer and elk but for many other creatures too. I along with several other outdoorsman that I converse with feel that the elk population could be raised well above the proposed 6000-8000 that is being sought after. We would like to see that population increased to numbers well over 10,000.

Next I would like to address the landowner tags. I personally don't have a problem with landowners receiving elk tags every year but I don't feel they should be able to receive ANY-ELK tags every year. I would like to see landowners able to receive antlerless tags every year and one person in the family unit able to apply for and receive an ANY-ELK tag once every three years. This would still allow the landowners to put pressure on the elk herds on their property every year and give more sportsmen and women an opportunity to draw a coveted and for some a once-in-a-lifetime Elk tag in the Black Hills of SD.

Lastly I would like to suggest allowing landowner assistance contingent on Walk-In-Area access. I know that some landowners want elk and others do not. Some receive assistance for haystack corrals and other damages. Many of these landowners get this assistance even though they will not let hunters on their property to help, by hunting and putting pressure on the elk. Therefore some of these landowners may be taking advantage of the assistance. My suggestion to alleviate this would be to require any landowner that asks for assistance or depredation tags in areas that are recognized as hunt-able units to place their property in the WALK-IN-AREA program for a minimum of two years for the species that the complaints are about. Elk-Deer-Turkeys, Etc... Also this stipulation on the walk in would allow ANY SEX of the species to be taken with a valid license, not just antlerless animals. This walk in could be done in a limited number of hunters per day process to keep landowners from worrying about overuse. Requiring a landowner to put maybe 50% or the majority of the land that is being overused into a program like this will also give them more assistance as part of their lease in the Walk-in-Program. Maybe some of these landowners will end up liking the program and enroll in it longer than the required time. I really appreciate your consideration on all of these topics and hope that my voice can make a difference to help our fellow sportsmen/women and landowners achieve a better outdoor experience."

Alan Lien and James Lien, Chamberlain, SD and Dale Springer and Roger Springer of Bradley, SD, emailed, "I have a difficult time with the proposed shooting of 20 Custer State Park cow elk and the numbers are no where near the target population of 700 to 900 elk, and reduce the potential for more calf recruitment to the population. Have you tried any other alternatives to move the elk?"

And what makes you think that by shooting the cows it will move them to other parts of the park? Maybe there is a reason they prefer that area other than they are from Wind Cave, it is more open and less potential for predation? I agree the elk are not inhabiting great habitat in other parts of the park but I think this is a shot in the dark.

Also, I know that the elk management plan said that 25% of the tags would be for archery elk, but where did this arbitrary and capricious number come from? You want to shoot more cows in the park, but reduce the early archery elk tags from 4 to 3? This was my dream tag and was fortunate enough to draw it last year after 24 years of applying, and it was a wonderful hunt. Archery hunting is so low impact that even a couple of more tags would have little impact on the elk or herd. I would like to see my son and friends also have a chance to enjoy this hunt someday. Thank you for the opportunity to comment."

Matt Rippentrop, Hot Springs, SD, emailed, "I'm not in favor of unit #3's south half 150 (50/50/50) total cow elk tags you are proposing for 2016 & 2017. It's too many cow elk tags being proposed for this area for two consecutive years. Please consider a smaller increase to 75 (25/25/25) cow elk tags rather than the 150 cow elk tags currently proposed. As a landowner in the area I believe if the cow elk quota is set as high as proposed the herd's size and quality will be set back, which took so long to rebuild to where it is today. Here are some additional past harvest numbers for you to review provided by SD GFP's website: 1) In 2015, there were only 60 cow elk tags issued in unit #3's south half and 23 cows were harvested. 2) From 2011 to 2015, unit #3's south half averaged 31 cow elk/year being harvested.

How can unit #3's south half average cow elk harvest rate for the last five years of 31 cow elk/year support a new tag allocation of 150 cow elk for the 2016 & 2017 hunting seasons? Thank you for your time and consideration of lowering unit #3's south half cow elk tag allocation to 75 cow elk tags/year (25/25/25)."

Jeb Bordewyk, Piedmont, SD, emailed, "I strongly agree with the sentiments of Mr. Rippentrop. He is well studied in this area and knows the land area and wild life in unit #3. His comments and statements are very difficult to refute. Please reconsider the drastic increase in cow tags for the south half of Unit #3. Thank you all for your time and the work you do as SDGFP commissioners and thank you for your consideration."

Scott Phillips and Kristi Phillips, Fall River County, SD, emailed, "I am a landowner in Fall River County who makes a living off of farming and ranching. The amount of elk we currently have throughout the year on our property creates a serious hardship for me. Fences are continually needing repaired which takes time and money, and the devastation they cause to the hay fields is terrible. The more elk I have the less production I have for my livestock. I am no longer able to raise an alfalfa seed crop due to the amount of elk that graze my fields and pastures each year. For these reasons we hope you increase the number of cow tags. The elk are a constant hardship the farmers and ranchers in our county and will continue to be so until something is done."

Application for Elk Licenses

No oral testimony was received.

Joe Long, Aberdeen, SD, emailed, "Why not create another tier in the elk drawing preference system to increase the odds for someone who has been applying for 15 or 20 years? Based on the 2015 drawing success data for unit 2 rifle, if a person has 10+ preference points, they have about a 12% chance of drawing a tag. By creating a "15 or more years preference" category and moving about 100 of the 173 licenses from the 10 yr.

group into that group, would greatly increase their chances. This could be done for archery and rifle seasons.”

Michael Schortzmann, Rapid City, SD, emailed, “I feel that landowners should be eligible for cow tags and have to send in for any elk tags just like everyone else. Their landowner tags should only be good on their own land and not public land.

I am concerned that the large jump in the number of proposed cow tags is premature. I don't think the elk herd has rebounded enough to have that many cow tags. I spend a lot of time in the woods and I have not seen evidence that that much of an increase is justified.”

Cal Walsh, Hermosa, SD, wrote, “I think they should weigh the drawings heavier in favor of people with higher points to reward perseverance. This should go for the CSP deer too.”

Dana Rogers, Box Elder, SD emailed, “First off, thank you for your time and efforts on behalf of SD wildlife and hunters. Often, I'm sure all you here are negative thoughts so I wanted to start by thanking you.

1. We have a current range goal of 6-8,000 elk in the Black Hills. The vast majority of that land is public National Forest which can support a few thousand more elk. I have discussed this with biologists, some ranchers and many hunters. A vocal minority of grazing lease holders and a similar number (small) of landowners are wanting reduction. The habitat can support it and though private land depredation needs to be considered and addressed that can be done with the emergency depredation pool that is above and beyond normal tag allocation. Please consider eliminating or reducing the increase in cow elk tags. We had a significant knee jerk reaction a decade ago and over-killed our cow elk herd. We are now recovering but that is tenuous and dependent on weather and significantly improved cal recruitment.

2. The 50% set aside for either sex landowner tags is extreme. I am wholeheartedly in support of ranchers and giving them preference but this is our premier species in SD with regard to tag allocation that most can ever 'expect' to draw. In 2015 19% of Either Sex elk tags went to qualifying landowners so it certainly didn't approach the entire 50% it 'could' have. However, given the significant odds against the rest of SD residents, with hundreds of people already holding more than 15 preference points in many hills units for both Rifle and Archery licenses, change is in order. I would propose offering the landowners qualifying cow elk tags annually. If that is entirely too severe for their taste, then I would propose limiting the qualifying landowner to receiving an either sex elk license every third year. They would still receive a huge amount of license accumulation over a lifetime compared to an average citizen. Additionally, given the fact that elk are so migratory and spend much of their lives on public land each year, if these landowners were to draw a tag, I feel they should be restricted to hunting their own land claimed in the elk use survey. This would be much more equitable given they control access on their deeded lands and would spread out either sex opportunity on the public areas within a unit. Elk are NOT deer where non-landowners can expect to draw at least every other year. These highly coveted elk permits take double digit years for the average South Dakotan and then they must wait another 10 years before even applying again, while the landowner does not. I am thankful

for the farmers and ranchers that do provide elk habitat but the equity for these permits needs to be addressed.

3. Depredation is certainly a consideration on some ranchers alfalfa and cattle feed. That can and definitely should be addressed where a complain exists and is verified. I would ask if exclusion cages are used? Is fencing that can significantly reduce depredation around stored feeds or fields mandated? If the claimant expresses depredation they certainly need to be open to tag holders or the depredation mitigated.

4. The preference system we use also needs to be addressed. I do appreciate that we have a hybrid or modified draw system where the highest percentage of tags first is drawn for the applicants with the most preference points and then on down the line. There are many western states that offer options I would recommend we South Dakotans consider. I would propose the hybrid system be modified to use a square system +1 for the current years application as well as modifying the percentage of available tags into different pools given the high number of applicants waiting extended periods.

For Example: Points Squared + Current Year = Chances in Draw: 0 sq 0 + 1 = 1; 1 sq 1 + 1 = 2; 2 sq 4 + 1 = 5; 3 sq 9 + 1 = 10; 4 sq 16 + 1 = 17; 5 sq 25 + 1 = 26; 6 sq 36 + 1 = 37; 7 sq 49 + 1 = 50; 8 sq 64 + 1 = 65; 9 sq 81 + 1 = 82; 10 sq 100 + 1 = 101 Etc

50% of available license (after LO tags drawn) in over 15 or even 20 PP pool. 25% of available to 10 or 15+ pp pool. 20% to 7 or 10+ pool. 5% to all remaining undrawn.

These changes would significantly alter the drawn dynamics in favor of longtime applicants and still provide the opportunity to draw for all. Thank you again for taking public comment into consideration and I respectfully request that all SD hunters be taken into consideration for these coveted tags as equitably as is humanly possible."

Waterfowl Hunting Seasons

No oral or written testimony was received.

Minimum Standard for Hunting with Air Guns

Ron Kolbeck, Salem, SD expressed concert to regulate air guns by foot pounds of pressure opposed to velocity and shared his email. Thanks for the conversation earlier today. At your request, I am providing this e-mail as support as to why I am not in favor of the proposed regulation and outline my recommendations for the use of foot pounds of energy (fpe) in regulations versus the current velocity or feet per second (fps). I am also sharing this e-mail with Andy Alban, as I also had an earlier conversation with him to help me understand the rationale for the proposed change and we discussed my recommendation of using fpe as well. If either of you have any questions, please feel free to give me a call. I do plan to attend the Commission meeting on April 7th and provide testimony in person as well.

The current minimum air gun specifications state: "No person may hunt species listed in SDCL 41-8-31(1A) with an air gun that is factory-rated to produce a muzzle velocity of less than 1000 feet per second. Only hunting pellets are permitted." I was involved in discussions and testified in front of the Commission when this was established in 2011. (Cathy you were right, that was the meeting where the Commissioners were in

Pierre and testimony was heard from Yankton via phone due to the flood.) The discussion at that time was to make sure the most common caliber air gun, the .177, would deliver an appropriate amount of power to humanely kill the game. While foot pounds of energy (fpe) was discussed as a measure, the Commission decided to use the velocity or fps as this is what the gun manufacturers use to promote their guns. The current requirement of 1000 fps velocity effectively established an estimated minimum of 18 fpe, assuming the average weight of a .177 hunting pellet of approximately 8 grains. $[(FPE = \text{weight of bullet in grains} * \text{velocity (FPS)} * \text{velocity (FPS)}) / 450,435]$ What the current regulation failed to recognize is that larger caliber air guns shooting heavier pellets could generate substantially more energy (fpe) even at slower speeds. For example, using the same formula a .22 caliber pellet weighing 15 grains would generate 18 fpe at just 730 fps. That same 15 grain pellet at 1000 fps would generate 33 fpe, while a .25 caliber air gun can generate 39 fpe at 700 fps using a 36 grain pellet. For your benefit, I have attached an Excel spreadsheet that contains the formula and lays out some different scenarios with each caliber.

The intent to allow the larger caliber air guns that are more capable of humanely harvesting game makes perfect sense to me. However, the current proposal to simply lower the velocity for all guns creates a real concern. Again, the most common air gun out there is the .177 caliber using an 8 grain pellet. At 600 fps this gun would only generate 6 fpe versus 18 fpe at 1000 fps. To put this in perspective, I have attached an article that I have found useful in framing my research on the topic. This article includes a chart with the minimum acceptable caliber and energy for hunting various game. In researching, I have found that everyone tends to have an opinion about how much energy is needed to kill various game, so everyone is not likely to agree with this chart. However, I have found this chart to be a middle of the road amongst the various opinions of experienced air gun enthusiasts. Please note that the chart suggests 9 fpe for rabbit or squirrel sized game versus 25 fpe for raccoon and 50 fpe for coyote. Also note that the minimum caliber suggested is .22 for rabbit, squirrel and raccoon, but steps up to .30 caliber for coyote. When we are discussing the energy required to harvest an animal, it is also important to recognize that there is a big difference in muzzle energy and the amount of energy delivered to the target. As a general rule, air guns lose energy very rapidly down range. For example, if the current proposal of 600 fps was adopted, a .177 caliber gun using an 8 grain pellet would generate 6.4 fpe at the muzzle, but only 3.6 fpe at 10 yards and 2.8 fpe at 30 yards. This is well below any minimums I have ever heard of for any game and why I cannot support the current recommendation.

My recommendation would be to shift to a Foot Pounds of Energy (FPE) specification at the muzzle. This measure shows no favoritism for any specific caliber or velocity. I also researched the local sporting goods stores and found that many of the air gun manufacturers are now publishing the muzzle fpe on the box, especially for the larger calibers and the true enthusiasts know the capabilities of their guns. Using FPE is also consistent with how current regulations are established for hunting big game. My recommendation is to establish separate minimums for small game and for predators/varmints with minimums of 12 fpe and 30 fpe, respectively. If this distinction is not made, then I would recommend a minimum of 18 fpe, which is where it is effectively at today.

I would also like to encourage the Commission to consider how they will handle the anticipated request for the use of air guns in hunting big game in South Dakota. A few short years ago this may have sounded absurd, but several states now allow this and I anticipate there will be a push for it here in the near future. As we look at these requests, it is important to recognize that hunting with an air gun should be considered similar to hunting with a muzzle loader or even a bow. Air guns are very similar to these primitive weapons in that they do not generate the energy necessary to create shocking power like a firearm does. The animals are either shot in the head or they must die from blood loss. This requires the hunter to get very close to the animal and be able to make a very accurate shot.

As I researched this topic and then wrote this out, I realized how confusing this can be, especially for someone who is not familiar with ballistics. Thus I would welcome the opportunity to visit in person to address any questions or concerns you may have.

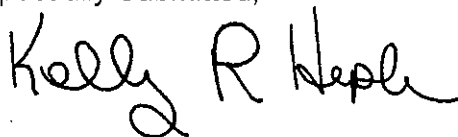
Allowance for Trail Cameras on Public Land

No written testimony was received

Spencer Vaa, Brookings, SD, spoke in regards to his concern about the use of trail cameras on public lands especially GPA's specifically for deer hunting. He stated that when people see tree stands and trail cameras it give the impression that the area is designated spot for a specific person.

The public Hearing concluded at 2:17 p.m.

Respectfully Submitted,

A handwritten signature in black ink that reads "Kelly R Hepler". The signature is written in a cursive style with a large, looped "K" and a distinct "R".

Kelly R. Hepler, Department Secretary

GAME, FISH & PARKS

523 East Capital

Pierre, SD 57501

(605)773-4510

Fax (605)773-6245

John.Sayler@state.sd.us

³
★ Please request
email addresses

REQUEST FOR LISTS OF LICENSE HOLDERS

Application

Type of List Requested Pheasant Hunting

Number of licenses in list ~10,000 in specific states

Name of Person, Entity, or Organization requesting list:

Dakota Prairie Lodge & Resort LLC

Address of Person, Entity, or Organization:

35451 253rd Street

Kimball, SD 57355

How would you like your list sent to you: (email or disk)

email: info@SD-PheasantHunting.com

Email Address:

Phone Number

605-550-4715

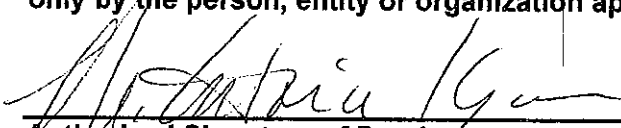
Purpose for which list will be used:

Direct marketing to hunters

This list is Names and Mailing Addresses ONLY

The sale of lists by the Department of Game, Fish & Parks is authorized by SDCL 1-27-1 and ARSD 41:06:02:04, 05 and 06. The fee for a Game, Fish & Parks Commission approved exception is \$100, otherwise the fee is \$100 per thousand names or a minimum of \$100 whichever is greater.

Unless requested and approved as part of this request, the license list will not include anyone under eighteen years of age. Names are for one-time use only and are to be used only by the person, entity or organization approved per this request.


Authorized Signature of Purchaser

3-29-16
Date

Date of Commission Action

REQUESTS FOR LISTS OF LICENSE HOLDERS

Summary of Lists Provided under new 2016 Procedures :
(organizations receiving previous GFP Commission Approval)

1. National Wild Turkey Federation – licensed turkey hunters
2. Chuck Ross (pending) – small game preserve license holders
3. Cabelas William-Neil & Associates (pending) – all 2015 hunting

GAME, FISH AND PARKS COMMISSION ACTION PROPOSAL

Black Hills Deer Hunting Season Chapter 41:06:19

Commission Meeting Dates:	Proposal	May 5-6, 2016	Custer State Park
	Public Hearing	June 2, 2016	Watertown
	Finalization	June 2-3, 2016	Watertown

DEPARTMENT RECOMMENDATION

Season Dates: November 1-30, 2016

Open Area: Black Hills

Licenses: 200 resident and 16 nonresident "Any" deer licenses
 3,500 resident and 280 nonresident "any Whitetail" deer licenses
 400 resident and 32 nonresident "Antlerless Whitetail" deer licenses

Requirements and Restrictions:

1. One-half of the resident licenses allocated for each unit are available for landowner preference.

Recommended changes from last year:

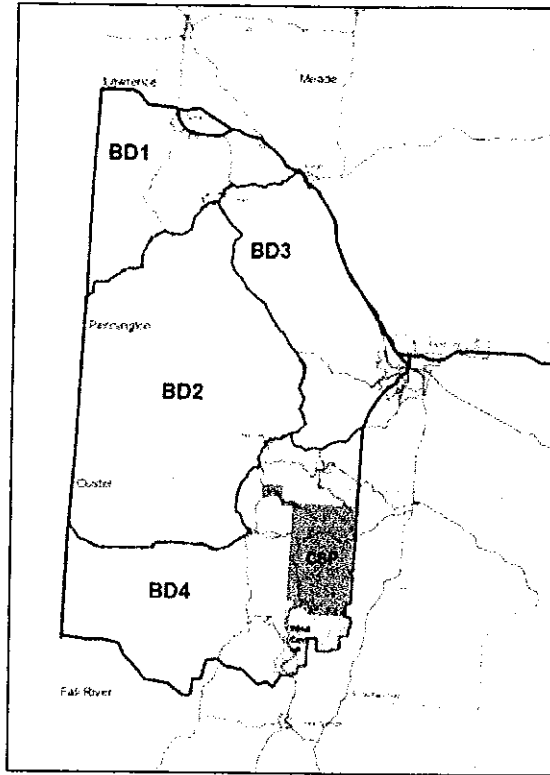
1. Offer 400 more resident "Antlerless Whitetail" deer licenses and 32 more nonresident "Antlerless Whitetail" deer licenses compared to 2015.
2. Modify the Black Hills antlerless deer management units (see attached map).
3. Remove the language in administrative rule depicting the license type and number of licenses from each hunting unit.

SUPPORTIVE INFORMATION

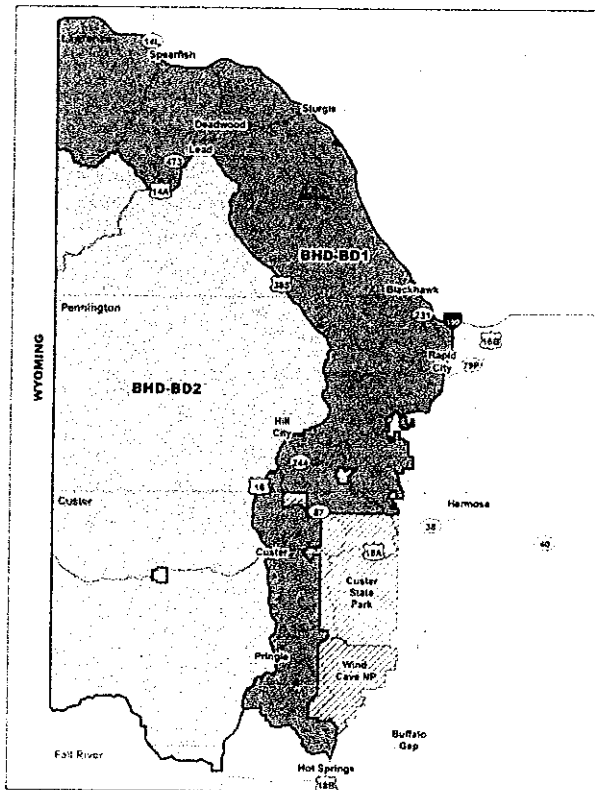
Year	Resident Licenses	Nonresident Licenses	WT Bucks Harvested	WT Does Harvested	MD Bucks Harvested	MD Does Harvested	All Deer Harvested	Hunter Success
2011	4,137	329	2,011	401	107	10	2,530	57%
2012	3,337	243	2,008	289	88	6	2,391	67%
2013	3,330	261	1,912	318	62	2	2,294	64%
2014	3,242	256	2,076	275	59	0	2,410	69%
2015	3,741	294	2,533	307	74	2	2,917	72%

APPROVE _____ MODIFY _____ REJECT _____ NO ACTION _____

Current Black Hills Antlerless Deer Management Units
(Units BD1, BD2, BD3, and BD4)

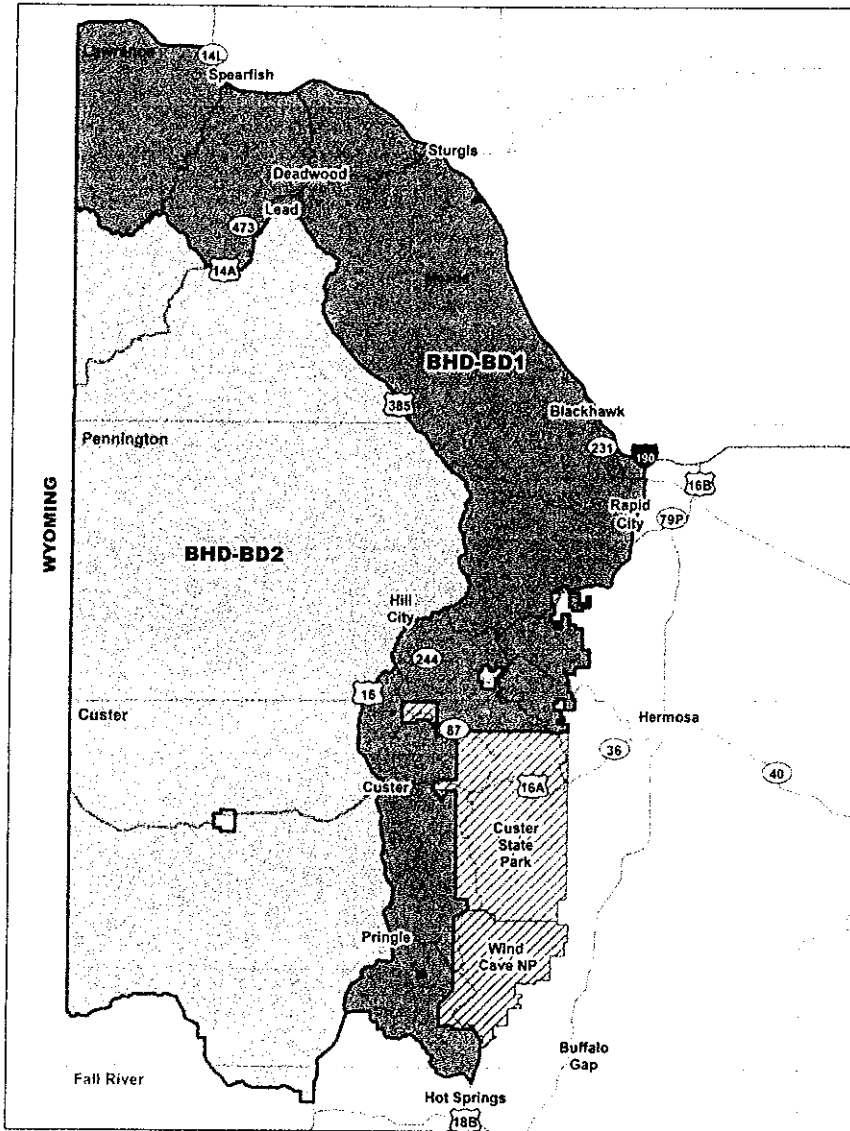


Proposed Black Hills Antlerless Deer Management Units
(Units BD1 and BD2)



APPROVE	MODIFY	REJECT	NO ACTION
---------	--------	--------	-----------

BLACK HILLS DEER UNITS



BH1 – All of the area in BD1 and BD2

Black Hills Deer Licenses - 2016

Unit	Resident Licenses			Nonresident Licenses		
	"Any Deer"	"Any Whitetail"	"Any Antlerless Whitetail"	"Any Deer"	"Any Whitetail"	"Any Antlerless Whitetail"
BH1	200	3,500		16	200	
BD1			300			24
BD2			100			8

Black Hills Deer - 2016

Unit	Resident Licenses			Nonresident Licenses			License Totals							
	Any D 01	Any WT 11	Ati Whitetail 13	Any D 01	Any WT 11	Ati Whitetail 13	RES 1-tag	RES 2-tag	RES Lic	RES Tags	NR 1-tag	NR 2-tag	NR Lic	NR Tags
BD1			300			24	300		300		24		24	24
BD2			100			8	100		100		8		8	8
BH1	200	3,500		16	280		3,700		3,700		296		296	296
TOTAL	200	3,500	400	16	280	32	4,100		4,100		328		328	328
Unit	Any D 01	Any WT 11	Ati Whitetail 13	Any D 01	Any WT 11	Ati Whitetail 13	RES 1-tag	RES 2-tag	RES Lic	RES Tags	NR 1-tag	NR 2-tag	NR Lic	NR Tags
							4,428		4,428				4,428	4,428

BLACK TAIL DEER
2015--2016 Comparison

Unit	Resident Licenses											
	Any Deer				Any Whitetail				Antlerless Whitetail			
	Year		Change		Year		Change		Year		Change	
	2015	2016	#	%	2015	2016	#	%	2015	2016	#	%
BD1												
BD2												
BH1	200	200	0	0%	3,500	3,500	0	0%				
TOTAL	200	200	0	0%	3,500	3,500	0	0%	0	400	400	NA

Note: An additional 8% of the number of licenses will be available to nonresidents.

GAME, FISH AND PARKS COMMISSION ACTION PROPOSAL

East River Deer Hunting Season Chapter 41:06.21

Commission Meeting Dates:	Proposal	May 5-6, 2016	Custer State Park
	Public Hearing	June 2, 2016	Watertown
	Finalization	June 2-3, 2016	Watertown

DEPARTMENT RECOMMENDATION

Season Dates: November 19 – December 4, 2016

December 31, 2016 – January 8, 2017 for antlerless deer tags only

Open Area: See the attached map

Licenses: 17,505 one-tag, 10,175 two-tag, and 1,400 three-tag licenses (total of 42,055 tags)

Requirements and Restrictions:

1. One-half of the licenses allocated in each unit are available for landowner/operator preference.
2. In addition to these licenses, 556 "any deer" licenses are available through the "Special Buck" application as approved at the March GFP Commission meeting.
3. Landowners not possessing a license that allows the harvest of a buck may purchase an "any deer" or a two-tag "any deer + antlerless deer" license that is valid on their property only.
4. Initially, all licenses are available only to residents. Nonresidents may apply for licenses remaining after the second lottery drawing.
5. A portion of southeastern Minnehaha County is closed to hunting with firearms other than muzzleloaders and shotguns using slugs.
6. Only unfilled "any antlerless deer" and "antlerless whitetail deer" tags are valid for 9 days beginning on the Saturday after Christmas.

Recommended changes from last year:

1. Offer 4,220 less one-tag licenses, 5,075 more two-tag licenses (10,150 tags), and 1,400 more 3-tag licenses (4,200 tags) compared to 2015.
2. Establish Unit ERD-12B as an antlerless deer unit within Bon Homme County described as that portion of Bon Homme County south of SD Highway 50 and east of SD Highway 37 (see map).
3. Remove the language in administrative rule depicting the license type and number of licenses from each hunting unit.

Year	Buck Tags	Doe Tags	Total Tags
2015	19,625	12,300	31,925
2016	19,955	22,100	42,055

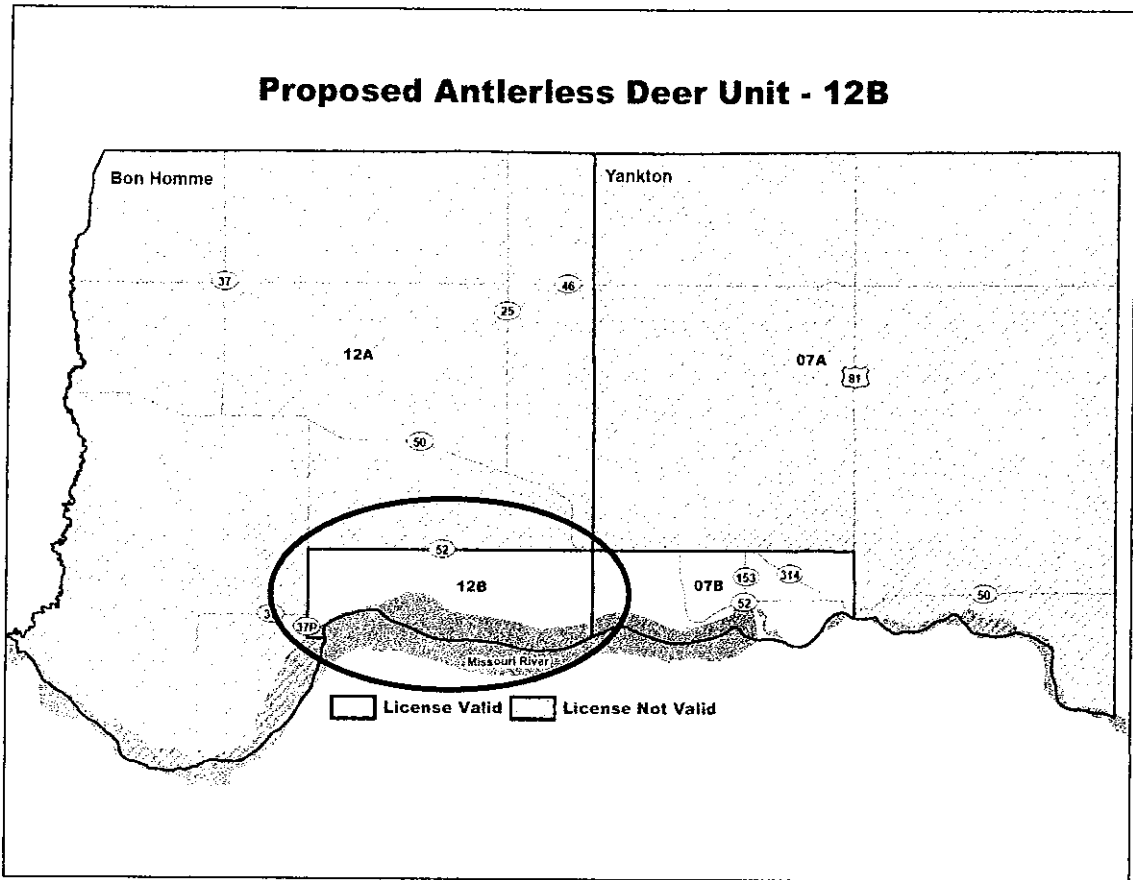
Buck Tags (+2%)
Doe Tags (+80%)

SUPPORTIVE INFORMATION

Year	Licenses Sold	WT Bucks Harvested	WT Does Harvested	MD Bucks Harvested	MD Does Harvested	All Deer Harvested	Tag Success
2011	47,539	14,970	19,401	502	513	35,386	44%
2012	39,284	13,522	14,153	383	337	28,394	46%
2013	32,990	8,914	9,857	189	249	19,210	38%
2014	25,171	9,679	5,864	254	48	15,845	55%
2015	26,752	10,041	6,413	246	59	16,759	53%

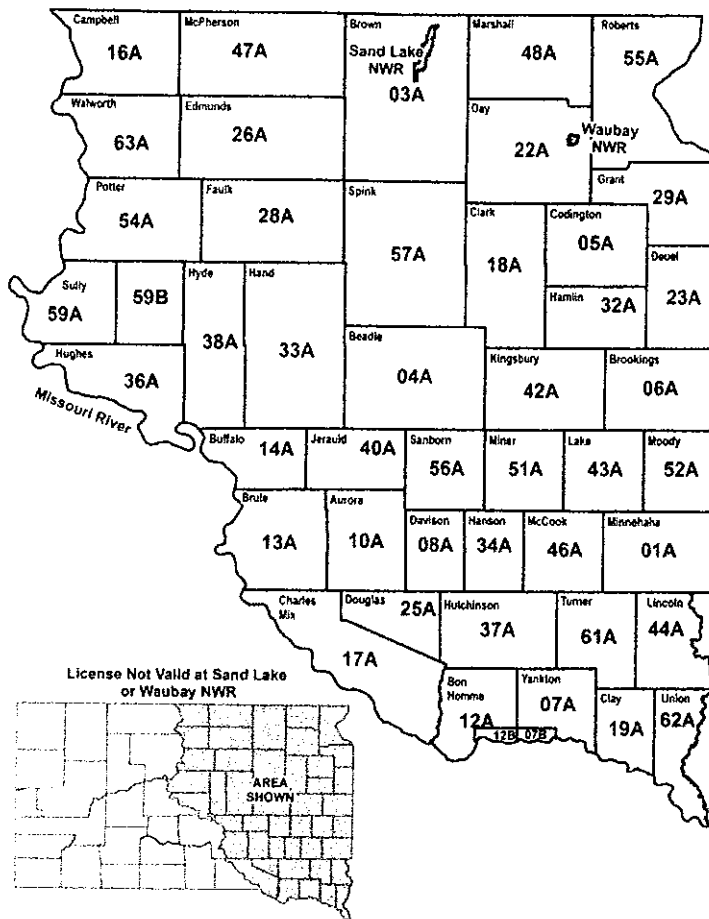
APPROVE _____	MODIFY _____	REJECT _____	NO ACTION _____
---------------	--------------	--------------	-----------------

Proposed Unit ERD-12B (Antlerless Deer Unit)



APPROVE MODIFY REJECT NO ACTION

EAST RIVER DEER UNITS



2016 – License and Tag Numbers by Unit

Unit	Licenses	Tags	Unit	Licenses	Tags	Unit	Licenses	Tags
01A	650	650	19A	200	200	44A	200	200
03A	2,200	2,200	22A	600	600	46A	450	450
04A	1,050	1,300	23A	400	400	47A	1,000	2,000
05A	250	250	25A	325	325	48A	500	500
06A	550	550	26A	1,300	2,600	51A	900	950
07A	250	250	28A	1,400	4,200	52A	450	450
07B	75	75	29A	300	300	54A	1,050	1,950
08A	300	300	32A	600	600	55A	500	500
10A	950	1,650	33A	870	1,720	56A	900	950
12A	200	200	34A	300	300	57A	1,300	1,300
12B	50	50	36A	600	775	59A	550	950
13A	1,150	2,000	37A	100	100	59B	470	920
14A	400	700	38A	920	1,820	61A	100	100
16A	720	1,420	40A	700	1,300	62A	250	250
17A	550	550	42A	700	700	63A	750	1,450
18A	600	600	43A	450	450			

Unit #	Unit Name	Resident Licenses																	License Totals						
		AnyD	AtID	AD+2AntID	3AntID	AD+AtID	2 AtID	AnyW	AtIW	AnyW+2AntIW	3 AtIW	AW+AtIW	2 AtIW	18	19	RES	1-tag	RES	2-tag	RES	3-tag	Licenses	RES	Tags	
		01	03	06	07	08	09	11	13	16	17	18	19	RES	1-tag	RES	2-tag	RES	3-tag	Licenses	RES	Tags			
01A	Minnehaha	550	100																				650	650	
03A	Brown	1,000	1,200																					2,200	2,200
04A	Beadle																							0	0
05A	Codfington	250																						800	250
06A	Brookings	450	100																					250	250
07A	Yankton	250																						550	550
07B	Yankton																							250	250
08A	Davison																							75	75
10A	Aurora																							300	300
12A	Bon Homme																							250	700
12B	Bon Homme																							200	0
13A	Brule	300																						50	50
14A	Buffalo	100																						300	300
16A	Campbell	20																						100	700
17A	Charles Mix	150																						20	700
18A	Clark	600																						550	0
19A	Clay	200																						600	600
22A	Day	600																						200	200
23A	Deuel	400																						600	600
25A	Douglas																							400	400
26A	Edmunds																							325	325
28A	Faulk																							0	1,300
29A	Grant	300																						0	1,400
32A	Hamlin	600																						300	0
33A	Hand	20																						600	0
34A	Hanson																							20	850
36A	Hughes	175																						300	0
37A	Hutchinson																							425	175
38A	Hyde	20																						100	0
40A	Jerauld																							20	900
42A	Kingsbury	500	200																					100	600
43A	Lake	350	100																					100	700
44A	Lincoln	200																						450	0
46A	McCook	350	100																					200	0
47A	McPherson																							450	0
48A	Marshall	500																						0	1,000
51A	Miner	400	450																					500	0
52A	Moody	350	100																					850	50
54A	Potter	150																						450	0
55A	Roberts	500																						150	900
56A	Sarborn																							500	0
57A	Spink	900	400																					850	50
59A	Sully West	150																						1,300	0
59B	Sully East	20																						150	400
61A	Turner	100																						20	450
62A	Union	250																						100	0
63A	Waiworth	50																						250	0
TOTAL		10,755	2,825	600	800	1,200	1,150	2,800	1,125	0	4,600	3,225	17,505	10,175	1,400	29,080	42,055	RES	RES	RES	RES	RES	RES	RES	RES
AnyD																									
AtID																									
AD+2AntID																									
3AntID																									
AD+AtID																									
2 AtID																									
AnyW																									
AtIW																									
AnyW+2AntIW																									
3 AtIW																									
AW+AtIW																									
2 AtIW																									
18																									
19																									
RES																									
1-tag																									
RES																									
2-tag																									
RES																									
3-tag																									
Licenses																									
RES																									
Tags																									

EAST RIVER DEER
2015--2016 Comparison

5b

Unit #	Unit Name	2015 Resident Licenses	2016 Resident Licenses	# Change	% Change	2015 Resident Tags	2016 Resident Tags	# Change	% Change
01A	Minnehaha	550	650	100	18%	550	650	100	18%
03A	Brown	1,500	2,200	700	47%	1,500	2,200	700	47%
04A	Beadle	1,000	1,050	50	5%	1,000	1,300	300	30%
05A	Codington	250	250	0	0%	250	250	0	0%
06A	Brookings	450	550	100	22%	450	550	100	22%
07A	Yankton	150	250	100	67%	150	250	100	67%
07B	Yankton	50	75	25	50%	50	75	25	50%
08A	Davison	300	300	0	0%	300	300	0	0%
10A	Aurora	800	950	150	19%	1,100	1,650	550	50%
12A	Bon Homme	150	200	50	33%	150	200	50	33%
12B	Bon Homme	0	50	50	NA	0	50	50	NA
13A	Brule	1,350	1,150	-200	-15%	1,350	2,000	650	48%
14A	Buffalo	400	400	0	0%	400	700	300	75%
16A	Campbell	720	720	0	0%	720	1,420	700	97%
17A	Charles Mix	450	550	100	22%	450	550	100	22%
18A	Clark	600	600	0	0%	600	600	0	0%
19A	Clay	150	200	50	33%	150	200	50	33%
22A	Day	600	600	0	0%	600	600	0	0%
23A	Deuel	400	400	0	0%	400	400	0	0%
25A	Douglas	250	325	75	30%	250	325	75	30%
26A	Edmunds	1,200	1,300	100	8%	2,400	2,600	200	8%
28A	Faulk	1,500	1,400	-100	-7%	3,000	4,200	1,200	40%
29A	Grant	300	300	0	0%	300	300	0	0%
32A	Hamlin	600	600	0	0%	600	600	0	0%
33A	Hand	1,020	870	-150	-15%	1,020	1,720	700	69%
34A	Hanson	300	300	0	0%	300	300	0	0%
36A	Hughes	575	600	25	4%	725	775	50	7%
37A	Hutchinson	20	100	80	400%	20	100	80	400%
38A	Hyde	920	920	0	0%	1,820	1,820	0	0%
40A	Jerauld	650	700	50	8%	850	1,300	450	53%
42A	Kingsbury	700	700	0	0%	700	700	0	0%
43A	Lake	350	450	100	29%	350	450	100	29%
44A	Lincoln	200	200	0	0%	200	200	0	0%
46A	McCook	350	450	100	29%	350	450	100	29%
47A	McPherson	800	1,000	200	25%	800	2,000	1,200	150%
48A	Marshall	500	500	0	0%	500	500	0	0%
51A	Miner	800	900	100	13%	800	950	150	19%
52A	Moody	300	450	150	50%	300	450	150	50%
54A	Potter	1,050	1,050	0	0%	1,050	1,950	900	86%
55A	Roberts	400	500	100	25%	400	500	100	25%
56A	Sanborn	800	900	100	13%	800	950	150	19%
57A	Spink	1,300	1,300	0	0%	1,300	1,300	0	0%
59A	Sully West	550	550	0	0%	950	950	0	0%
59B	Sully East	470	470	0	0%	920	920	0	0%
61A	Turner	100	100	0	0%	100	100	0	0%
62A	Union	200	250	50	25%	200	250	50	25%
63A	Walworth	750	750	0	0%	750	1,450	700	93%
	TOTAL	26,825	29,080	2,255	8%	31,925	42,055	10,130	32%

GAME, FISH, AND PARKS COMMISSION ACTION PROPOSAL

West River Deer Hunting Season Chapter 41-06-20

Commission Meeting Dates:	Proposal	May 5-6, 2016	Custer State Park
	Public Hearing	June 2, 2016	Watertown
	Finalization	June 2-3, 2016	Watertown

DEPARTMENT RECOMMENDATION

Season Dates:

Units 30A (Gregory) and 50A (Mellette):	November 5-8 and November 21-27, 2016
All Other Units:	November 12-27, 2016

Open Area: See the attached map

Licenses: Residents: 14,345 one-tag, 5,420 two-tag, and 0 three-tag licenses
 Nonresidents: 1,151 one-tag, 434 two-tag, and 0 three-tag licenses

Requirements and Restrictions:

- 500 resident and 500 nonresident "any deer" licenses are available through the "Special Buck" application.
- One-half of the licenses allocated in each unit are available for landowner/operator preference applicants.
- Landowners may also purchase an "any deer" or "any deer + any antlerless deer" license that is valid only on their property as long they do not hold a regular West River deer license that allows the harvest of a buck.
- Only persons using a wheelchair may apply for the licenses in Stanley County (Unit 58D) designated as a special "Hunters with Disabilities Unit."

Recommended changes from last year:

- Adjust resident license numbers by decreasing one-tag licenses by 2,095 and increasing two-tag licenses by 3,800 compared to 2015.
- Adjust nonresident license numbers by decreasing one-tag licenses by 168 and increasing two-tag licenses by 304 compared to 2015.
- Remove the language in administrative rule depicting the license type and number of licenses from each hunting unit.

Year	Buck Tags	Doe Tags	Total Tags
2015	15,925	3,755	19,680
2016	16,480	8,705	25,185

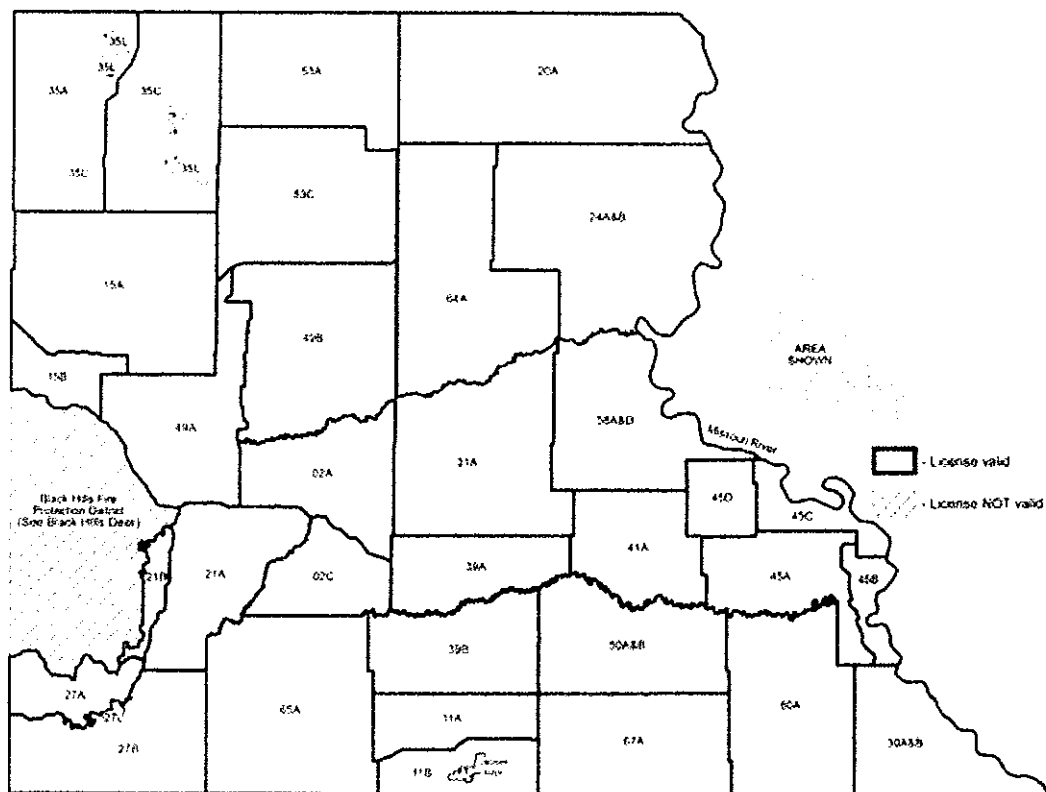
Buck Tags (+4%)
 Doe Tags (+132%)

SUPPORTIVE INFORMATION

Year	Licenses Sold	WT Bucks Harvested	WT Does Harvested	MD Bucks Harvested	MD Does Harvested	All Deer Harvested	Tag Success
2011	29,895	11,139	12,301	4,456	3,901	31,797	48%
2012	25,654	8,978	9,146	3,950	2,466	24,541	49%
2013	22,838	7,000	5,632	2,729	1,567	16,927	36%
2014	19,828	6,641	2,244	2,448	274	11,607	59%
2015	19,565	7,739	2,367	2,804	182	13,091	61%

APPROVE _____ **MODIFY** _____ **REJECT** _____ **NO ACTION** _____

WEST RIVER DEER UNITS



2016 - West River Deer License & Tag Numbers

Unit	Resident		Nonresident		Unit	Resident		Nonresident	
	Licenses	Tags	Licenses	Tags		Licenses	Tags	Licenses	Tags
02A	600	800	48	64	39A	250	250	20	20
02C	150	150	12	12	39B	400	400	32	32
11A	250	250	20	20	41A	550	900	44	72
11B	225	225	18	18	45A	800	1,500	64	120
15A	1,000	1,850	80	148	45B	250	250	20	20
15B	800	1,450	64	116	45C	50	70	5	7
20A	400	400	32	32	45D	90	90	8	8
21A	300	300	24	24	49A	1,000	1,000	80	80
21B	150	150	12	12	49B	1,400	1,400	112	112
24A	450	450	36	36	50A	450	450	36	36
24B	20	20	2	2	50B	600	600	48	48
27A	100	100	8	8	53A	850	1,400	68	112
27B	500	500	40	40	53C	1,200	1,900	96	152
27L	20	20	2	2	58A	550	550	44	44
30A	850	1,550	68	124	58D	10	10	2	2
30B	850	1,550	68	124	60A	1,800	1,800	144	144
31A	850	850	68	68	64A	500	500	40	40
35A	650	650	52	52	65A	75	75	6	6
35C	500	500	40	40	67A	150	150	12	12
35L	125	125	10	10					

West River Deer - 2016

Unit #	Unit Name	Resident Licenses												Nonresident Licenses												License Totals																																																																																																																																																																																																																																																																																																																																																																																																																																																																																																																																																																																																																																																																																																																																																																																																																																																																																																																																																																																																																																																																																																																																																																																																																																																																																																																																																																																																																																																																																																														
		01	02	03	04	05	06	07	08	09	10	11	12	13	14	15	16	17	18	19	20	21	22	23	24	25	26	27	28	29	30	31	32	33	34	35	36	37	38	39	40	41	42	43	44	45	46	47	48	49	50	51	52	53	54	55	56	57	58	59	60	61	62	63	64	65	66	67	68	69	70	71	72	73	74	75	76	77	78	79	80	81	82	83	84	85	86	87	88	89	90	91	92	93	94	95	96	97	98	99	100	101	102	103	104	105	106	107	108	109	110	111	112	113	114	115	116	117	118	119	120	121	122	123	124	125	126	127	128	129	130	131	132	133	134	135	136	137	138	139	140	141	142	143	144	145	146	147	148	149	150	151	152	153	154	155	156	157	158	159	160	161	162	163	164	165	166	167	168	169	170	171	172	173	174	175	176	177	178	179	180	181	182	183	184	185	186	187	188	189	190	191	192	193	194	195	196	197	198	199	200	201	202	203	204	205	206	207	208	209	210	211	212	213	214	215	216	217	218	219	220	221	222	223	224	225	226	227	228	229	230	231	232	233	234	235	236	237	238	239	240	241	242	243	244	245	246	247	248	249	250	251	252	253	254	255	256	257	258	259	260	261	262	263	264	265	266	267	268	269	270	271	272	273	274	275	276	277	278	279	280	281	282	283	284	285	286	287	288	289	290	291	292	293	294	295	296	297	298	299	300	301	302	303	304	305	306	307	308	309	310	311	312	313	314	315	316	317	318	319	320	321	322	323	324	325	326	327	328	329	330	331	332	333	334	335	336	337	338	339	340	341	342	343	344	345	346	347	348	349	350	351	352	353	354	355	356	357	358	359	360	361	362	363	364	365	366	367	368	369	370	371	372	373	374	375	376	377	378	379	380	381	382	383	384	385	386	387	388	389	390	391	392	393	394	395	396	397	398	399	400	401	402	403	404	405	406	407	408	409	410	411	412	413	414	415	416	417	418	419	420	421	422	423	424	425	426	427	428	429	430	431	432	433	434	435	436	437	438	439	440	441	442	443	444	445	446	447	448	449	450	451	452	453	454	455	456	457	458	459	460	461	462	463	464	465	466	467	468	469	470	471	472	473	474	475	476	477	478	479	480	481	482	483	484	485	486	487	488	489	490	491	492	493	494	495	496	497	498	499	500	501	502	503	504	505	506	507	508	509	510	511	512	513	514	515	516	517	518	519	520	521	522	523	524	525	526	527	528	529	530	531	532	533	534	535	536	537	538	539	540	541	542	543	544	545	546	547	548	549	550	551	552	553	554	555	556	557	558	559	560	561	562	563	564	565	566	567	568	569	570	571	572	573	574	575	576	577	578	579	580	581	582	583	584	585	586	587	588	589	590	591	592	593	594	595	596	597	598	599	600	601	602	603	604	605	606	607	608	609	610	611	612	613	614	615	616	617	618	619	620	621	622	623	624	625	626	627	628	629	630	631	632	633	634	635	636	637	638	639	640	641	642	643	644	645	646	647	648	649	650	651	652	653	654	655	656	657	658	659	660	661	662	663	664	665	666	667	668	669	670	671	672	673	674	675	676	677	678	679	680	681	682	683	684	685	686	687	688	689	690	691	692	693	694	695	696	697	698	699	700	701	702	703	704	705	706	707	708	709	710	711	712	713	714	715	716	717	718	719	720	721	722	723	724	725	726	727	728	729	730	731	732	733	734	735	736	737	738	739	740	741	742	743	744	745	746	747	748	749	750	751	752	753	754	755	756	757	758	759	760	761	762	763	764	765	766	767	768	769	770	771	772	773	774	775	776	777	778	779	780	781	782	783	784	785	786	787	788	789	790	791	792	793	794	795	796	797	798	799	800	801	802	803	804	805	806	807	808	809	810	811	812	813	814	815	816	817	818	819	820	821	822	823	824	825	826	827	828	829	830	831	832	833	834	835	836	837	838	839	840	841	842	843	844	845	846	847	848	849	850	851	852	853	854	855	856	857	858	859	860	861	862	863	864	865	866	867	868	869	870	871	872	873	874	875	876	877	878	879	880	881	882	883	884	885	886	887	888	889	890	891	892	893	894	895	896	897	898	899	900	901	902	903	904	905	906	907	908	909	910	911	912	913	914	915	916	917	918	919	920	921	922	923	924	925	926	927	928	929	930	931	932	933	934	935	936	937	938	939	940	941	942	943	944	945	946	947	948	949	950	951	952	953	954	955	956	957	958	959	960	961	962	963	964	965	966	967	968	969	970	971	972	973	974	975	976	977	978	979	980	981	982	983	984	985	986	987	988	989	990	991	992	993	994	995	996	997	998	999	1000	1001	1002	1003	1004	1005	1006	1007	1008	1009	1010	1011	1012	1013	1014	1015	1016	1017	1018	1019	1020	1021	1022	1023	1024	1025	1026	1027	1028	1029	1030	1031	1032	1033	1034	1035	1036	1037	1038	1039	1040	1041	1042	1043	1044	1045	1046	1047	1048	1049	1050	1051	1052	1053	1054	1055	1056	1057	1058	1059	1060	1061	1062	1063	1064	1065	1066	1067	1068	1069	1070	1071	1072	1073	1074	1075	1076	1077	1078	1079	1080	1081	1082	1083	1084	1085	1086	1087	1088	1089	1090	1091	1092	1093	1094	1095	1096	1097	1098	1099	1100	1101	1102	1103	1104	1105	1106	1107	1108	1109	1110	1111	1112	1113	1114	1115	1116	1117	1118	1119	1120	1121	1122	1123	1124	1125	1126	1127	1128	1129	1130	1131	1132	1133	1134	1135	1136	1137	1138	1139	1140	1141	1142	1143	1144	1145	1146	1147	1148	1149	1150	1151	1152	1153	1154	1155	1156	1157	1158	1159	1160	1161	1162	1163	1164	1165	1166	1167	1168	1169	1170	1171	1172	1173	1174	1175	1176	1177	1178	1179	1180	1181	1182	1183	1184	1185	1186	1187	1188	1189	1190	1191	1192	1193	1194	1195	1196	1197	1198	1199	1200	1201	1202	1203	1204	1205	1206	1207	1208	1209	1210	1211	1212	1213	1214	1215	1216	1217	1218	1219	1220	1221	1222	1223	1224	1225	1226	1227	1228	1229	1230	1231	1232	1233	1234	1235	1236	1237	1238	1239	1240	1241	1242	1243	1244	1245	1246	1247	1248	1249	1250	1251	1252	1253	1254	1255	1256	1257	1258	1259	1260	1261	1262	1263	1264	1265	1266	1267	1268	1269	1270	1271	1272	1273	1274	1275	1276	1277	1278	1279	1280	1281	1282	1283	1284	1285	1286	1287	1288	1289	1290	1291	1292	1293	1294	1295	1296	1297	1298	1299	1300	1301	1302	1303	1304	1305	1306	1307	1308	1309	1310	1311	1312	1313	1314	1315	1316	1317	1318	1319	1320	1321	1322	1323	1324	1325	1326	1327	1328	1329	1330	1331	1332	1333	1334	1335	1336	1337	1338	1339	1340	1341	1342	1343	1344	1345	1346	1347	1348	1349	1350	1351	1352	1353	1354	1355	1356	1357	1358	1359	1360	1361	1362	1363	1364	1365	1366	1367	1368	1369	1370	1371	1372	1373	1374	1375	1376	1377	1378	1379	1380	1381	1382	1383	1384	1385	1386	1387	1388	1389	1390	1391	1392	1393	1394	1395	1396	1397	1398	1399	1400	1401	1402	1403	1404	1405	1406	1407	1408	1409	1410	1411	1412	1413	1414	1415	1416	1417	1418	1419	1420	1421	1422	1423	1424	1425	1426	1427	1428	1429	1430	1431	1432	1433	1434	1435	1436	1437	1438	1439	1440	1441	1442	1443	1444	1445	1446	1447	1448	1449	1450	1451	1452	1453	1454	1455	1456	1457	1458	1459	1460	1461	1462	1463	1464	1465	1466	1467	1468	1469	1470	1471	1472	1473	1474	1475	1476	1477	1478	1479

WEST RIVER DEER
2015-2016 Comparison

5c

Unit #	Unit Name	2015 Resident Licenses	2016 Resident Licenses	# Change	% Change	2015 Resident Tags	2016 Resident Tags	# Change	% Change
02A	Pennington	600	600	0	0%	800	800	0	0%
02C	Pennington	150	150	0	0%	150	150	0	0%
11A	Bennett	250	250	0	0%	250	250	0	0%
11B	Bennett	200	225	25	13%	200	225	25	13%
15A	Butte	800	1,000	200	25%	1,500	1,850	350	23%
15B	Butte	750	800	50	7%	850	1,450	600	71%
20A	Corson	400	400	0	0%	400	400	0	0%
21A	Custer	300	300	0	0%	300	300	0	0%
21B	Custer	100	150	50	50%	100	150	50	50%
24A	Dewey	450	450	0	0%	450	450	0	0%
24B	Little Moreau	20	20	0	0%	20	20	0	0%
27A	Fall River	100	100	0	0%	100	100	0	0%
27B	Fall River	400	500	100	25%	400	500	100	25%
27L	Fall River	15	20	5	33%	15	20	5	33%
30A	Gregory	800	850	50	6%	800	1,550	750	94%
30B	Gregory	800	850	50	6%	800	1,550	750	94%
31A	Haakon	900	850	-50	-6%	900	850	-50	-6%
35A	Harding	300	650	350	117%	300	650	350	117%
35C	Harding	300	500	200	67%	300	500	200	67%
35L	Harding	100	125	25	25%	100	125	25	25%
39A	Jackson	250	250	0	0%	250	250	0	0%
39B	Jackson	350	400	50	14%	350	400	50	14%
41A	Jones	700	550	-150	-21%	700	900	200	29%
45A	Lyman	800	800	0	0%	1,400	1,500	100	7%
45B	Lyman	250	250	0	0%	250	250	0	0%
45C	Lyman	50	50	0	0%	70	70	0	0%
45D	Lyman	90	90	0	0%	90	90	0	0%
49A	Meade	850	1,000	150	18%	850	1,000	150	18%
49B	Meade	1,100	1,400	300	27%	1,100	1,400	300	27%
50A	Mellette	450	450	0	0%	450	450	0	0%
50B	Mellette	600	600	0	0%	600	600	0	0%
53A	Perkins	650	850	200	31%	650	1,400	750	115%
53C	Perkins	1,100	1,200	100	9%	1,100	1,900	800	73%
58A	Stanley	550	550	0	0%	550	550	0	0%
58D	Stanley	10	10	0	0%	10	10	0	0%
60A	Tripp	1,800	1,800	0	0%	1,800	1,800	0	0%
64A	Ziebach	500	500	0	0%	500	500	0	0%
65A	Oglala Lakota	75	75	0	0%	75	75	0	0%
67A	Todd	150	150	0	0%	150	150	0	0%
TOTAL		18,060	19,765	1,705	9%	19,680	25,185	5,505	28%

Note: An additional 8% of the number of licenses will be available to nonresidents.

GAME, FISH AND PARKS COMMISSION ACTION PROPOSAL

National Wildlife Refuge Deer Hunting Season Chapter 41-06-36

Commission Meeting Dates:	Proposal	May 5-6, 2016	Custer State Park
	Public Hearing	June 2, 2016	Watertown
	Finalization	June 2-3, 2016	Watertown

DEPARTMENT RECOMMENDATION

Season Dates:

Sand Lake NWR	November 12-16, November 17-21, November 22-27, November 28 – December 4, December 5-11, and December 31, 2016 - January 8, 2017.
Lacreek NWR	October 19-25 and November 23-29.
Waubay NWR*	November 12-19, November 20-27, and November 28 – December 4.

* includes Waubay State Game Refuge

Licenses:

Sand Lake NWR	Resident: 100 "any deer" and 50 "any antlerless deer" licenses Nonresident: 10 "any deer" and 5 "any antlerless deer" licenses
Lacreek NWR	Residents: 20 "any deer" licenses Nonresidents: 3 "any deer" licenses
Waubay NWR	Residents: 30 "any deer" licenses Nonresidents: 3 "any deer" licenses

Requirements and Restrictions:

1. The first season on Sand Lake NWR, both seasons on Lacreek NWR and the first 2 seasons on Waubay NWR are restricted to muzzleloaders.
2. Applicants may apply for only one refuge unit (season) in the first application period.
3. Licenses remaining after the first application period may be purchased by any resident or nonresident on a first-come, first serve basis.

Recommended changes from last year:

1. Offer 10 less resident and 1 less nonresident "any deer" licenses for Unit RFD-LC1 in Lacreek National Wildlife Refuge compared to 2015.
2. Remove the language in administrative rule depicting the license type and number of licenses from each hunting unit.

SUPPORTIVE INFORMATION

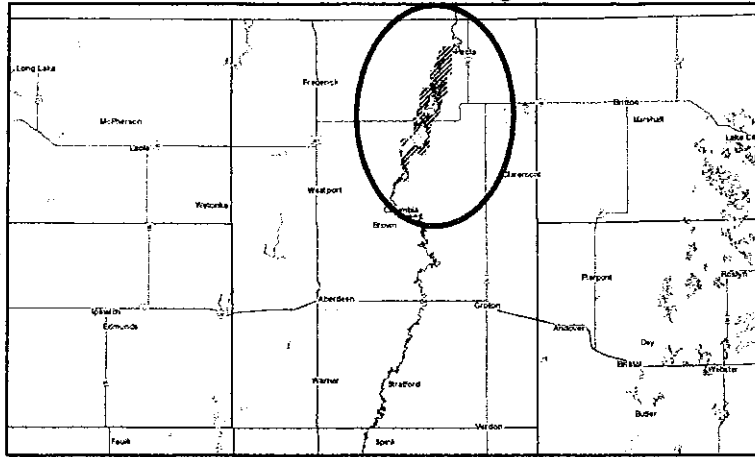
Table includes harvest data from Sand Lake, Lacreek and Waubay National Wildlife Refuges.

Year	Licenses	Bucks Harvested	Does Harvested	Total Harvest	Hunter Success
2011	329	55	67	122	37%
2012	248	64	31	95	38%
2013	213	63	23	85	37%
2014	200	60	6	66	33%
2015	212	59	6	65	31%

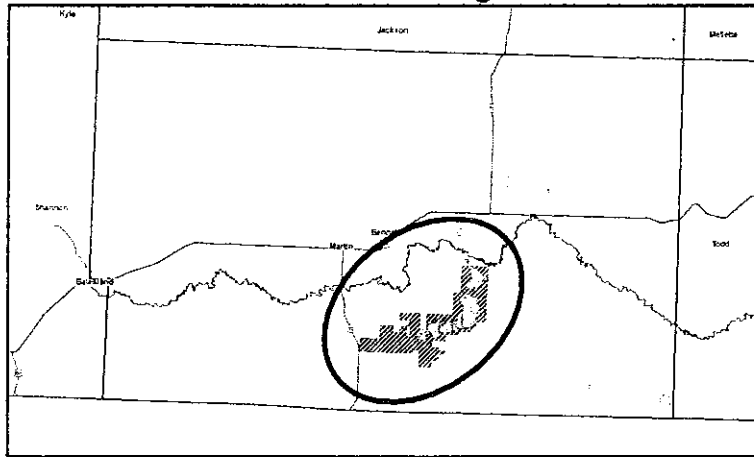
APPROVE _____ **MODIFY** _____ **REJECT** _____ **NO ACTION** _____

REFUGE DEER UNITS

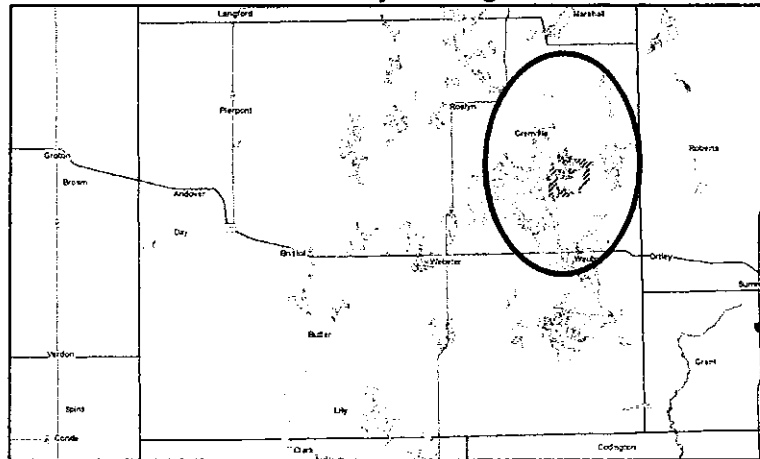
Sand Lake Refuge



Lacreek Refuge



Waubay Refuge



Refuge Deer - 2016

Unit	Resident Licenses	
	Any Deer	Any Antlerless Deer
Lacreek Refuge		
RFD-LC1	5	
RFD-LC2	15	
Sand Lake Refuge		
RFD-SL1	20	10
RFD-SL2	20	10
RFD-SL3	20	10
RFD-SL4	20	10
RFD-SL5	20	10
Waubay Refuge		
RFD-WA1	10	
RFD-WA2	10	
RFD-WA3	10	
TOTAL	150	50

REFUGE DEER
2015--2016 Comparison

5d

Resident Licenses								
Refuge Unit	Any Deer				Antlerless Deer			
	Year		Change		Year		Change	
	2015	2016	#	%	2015	2016	#	%
Lacreek Refuge								
RFD-LC1	15	5	-10	-67%				
RFD-LC2	15	15	0	0%				
Sand Lake Refuge								
RFD-SL1	20	20	0	0%	10	10	0	0
RFD-SL2	20	20	0	0%	10	10	0	0
RFD-SL3	20	20	0	0%	10	10	0	0
RFD-SL4	20	20	0	0%	10	10	0	0
RFD-SL5	20	20	0	0%	10	10	0	0
Waubay Refuge								
RFD-WA1	10	10	0	0%				
RFD-WA2	10	10	0	0%				
RFD-WA3	10	10	0	0%				
TOTAL	160	150	-10	-6%	50	50	0	0%

Note: An additional 8% of the number of licenses will be available to nonresidents.

GAME, FISH, AND PARKS COMMISSION ACTION PROPOSAL

Archery Deer Hunting Season 41:06:22

Commission Meeting Dates:	Proposal	May 5-6, 2016	Custer State Park
	Public Hearing	June 2, 2016	Watertown
	Finalization	June 2-3, 2016	Watertown

DEPARTMENT RECOMMENDATION

Season Dates: September 24, 2016 – January 15, 2017

Open Area: "Any Deer" Licenses: Statewide, East River, West River
"Antlerless Whitetail Deer" Licenses: Unit ARD-LM1

Licenses: Unlimited "any deer" licenses
Unlimited single tag "antlerless whitetail deer" licenses

Requirements and Restrictions:

1. Resident and nonresident hunters may purchase one (1) statewide "any deer" license or one (1) East River "any deer" license and one (1) West River "any deer" license.
2. Residents and nonresidents may purchase one (1) "antlerless whitetail deer" license.
3. Individuals may purchase one "antlerless whitetail deer" license for Unit ARD-LM1 (see map).
4. Shooting hours are ½ hour before sunrise to ½ hour after sunset.
5. From Jan 1-15, only "antlerless whitetail deer" licenses are valid.
6. Sand Lake NWR is open Oct 15 – Dec 31, except during the Sand Lake NWR firearm deer season.
7. Waubay Lake State Game Refuge and Waubay National Wildlife Refuge in Day County are open through Dec 31, except during refuge deer seasons.
8. Lacreek NWR is open through Dec 31, except during the Lacreek NWR firearm deer seasons.
9. Licensees must obtain an access permit from the Department issued by lottery drawing before hunting Adams Homestead and Nature Preserve, Good Earth State Park.

Recommended changes from last year:

1. For Unit ARD-LM1, close units 39A and 45B and open units BD1, BD2, 01A, 06A, 07B, 12B, 27B, 35A, 35C, 43A, 44A (north of 273rd Street), 46A, 49A, 49B, 52A, and 53A.
2. Increase the number of "antlerless whitetail deer" archery access permits from 20 to 25 for the Adams Homestead and Nature Preserve.

Designated Area	2016		
	Number of Access Permits		
	Any Deer	Antlerless Whitetail Deer	Total
Adams Homestead and Nature Preserve	5	25	30
Good Earth State Park	5	0	5

3. Remove the language in administrative rule depicting the license type and number of licenses from each hunting unit and the number of access permits from each designated area.

SUPPORTIVE INFORMATION

Year	"Any Deer" Licenses	"Antlerless Deer" Licenses (Tags)	Hunter Success	WT Bucks Harvested	WT Does Harvested	MD Bucks Harvested	MD Does Harvested	Deer Harvested
2011	20,210	7,857 (10,958)	27%	4,216	3,534	459	193	8,401
2012	20,528	7,700 (9,630)	27%	4,221	3,363	354	135	8,074
2013	20,956	6,395 (8,590)	25%	4,040	2,633	445	158	7,277
2014	21,634	2,853 (2,853)	26%	4,052	1,487	516	85	6,141
2015	23,636	3,051 (3,051)	28%	5,136	1,589	647	78	7,451

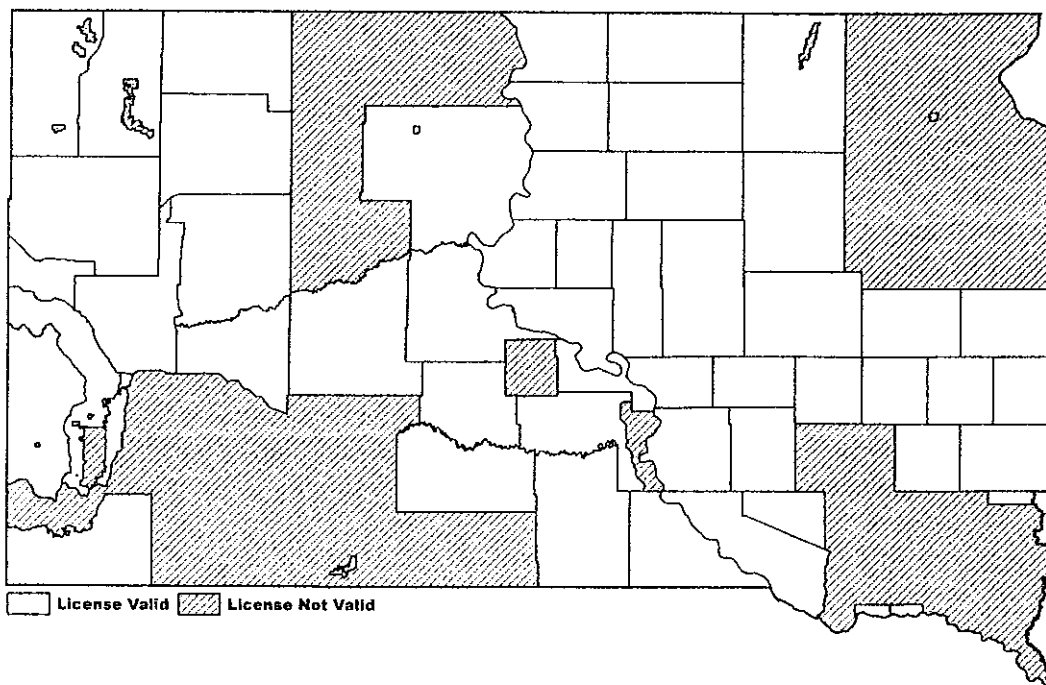
APPROVE _____ **MODIFY** _____ **REJECT** _____ **NO ACTION** _____

Archery Deer Hunting Season 2016 "Antlerless License" Restrictions

1. The Unit ARD-LM1 single-tag "antlerless whitetail deer" license is valid in all areas except the shaded areas.
2. Archery antlerless deer licenses are not valid on Sand Lake National Wildlife Refuge in Brown County.

Archery Antlerless Whitetail Deer

Unit ARD-LM1

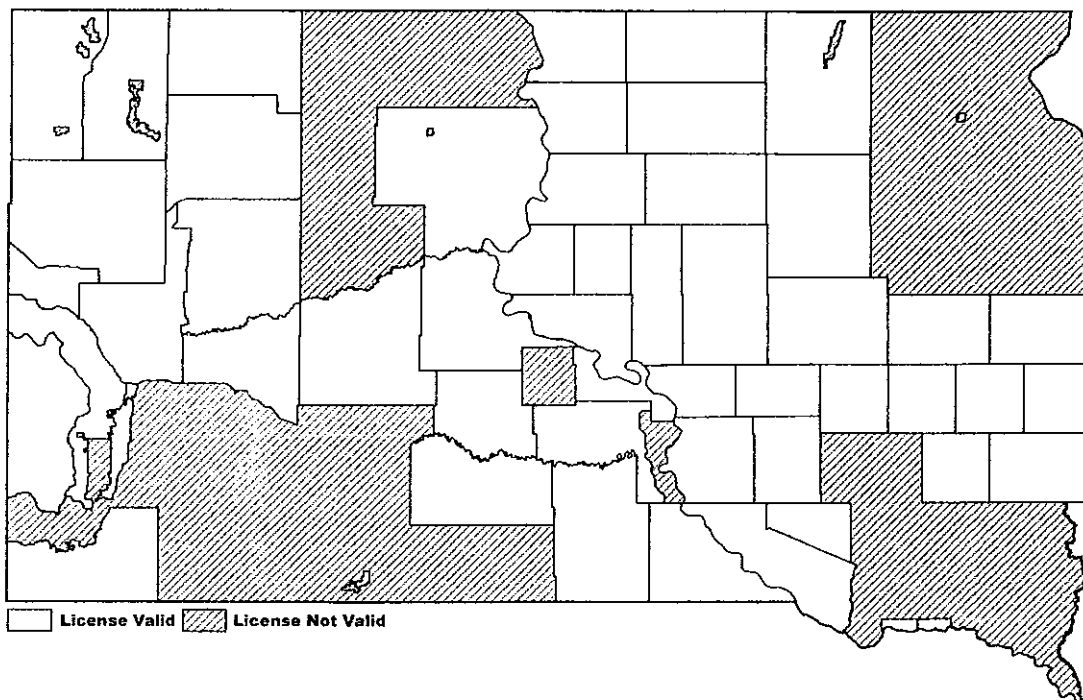


Muzzleloader Deer Hunting Season 2016 "Antlerless License" Restrictions

1. The Unit MZD-LM1 single-tag "antlerless whitetail deer" license is valid in all areas except the shaded areas.

Muzzleloader Antlerless Whitetail Deer

Unit ARD-LM1



GAME, FISH, AND PARKS COMMISSION ACTION PROPOSAL

Youth Deer Hunting Season Chapter 41.06:44

Commission Meeting Dates:	Proposal	May 5-6, 2016	Custer State Park
	Public Hearing	June 2, 2016	Watertown
	Finalization	June 2-3, 2016	Watertown

DEPARTMENT RECOMMENDATION

Season Dates: September 10, 2016 – January 15, 2017

Open Area: Statewide

Licenses: Single tag "any antlerless deer" license

Requirements and Restrictions:

1. Both residents and nonresidents that have not reached the age of 18 years old on June 30 may purchase a youth deer license.
2. Allow a resident parent and/or guardian to purchase a Youth Deer license.
3. Each hunter must be accompanied by an adult while hunting.
4. Shooting hours are ½ hour before sunrise to ½ hour after sunset.
5. Receipt of a license does not affect eligibility for other seasons.
6. Hunters may purchase up to one (1) youth deer license valid statewide.
7. Waubay State Game Refuge, Farm Island State Recreation Area, LaFramboise Island Nature Area, and the Fort Meade Bureau of Land Management South unit and the signed portion of the North unit are closed to youth deer hunting.

Recommended change from last year: None.

SUPPORTIVE INFORMATION

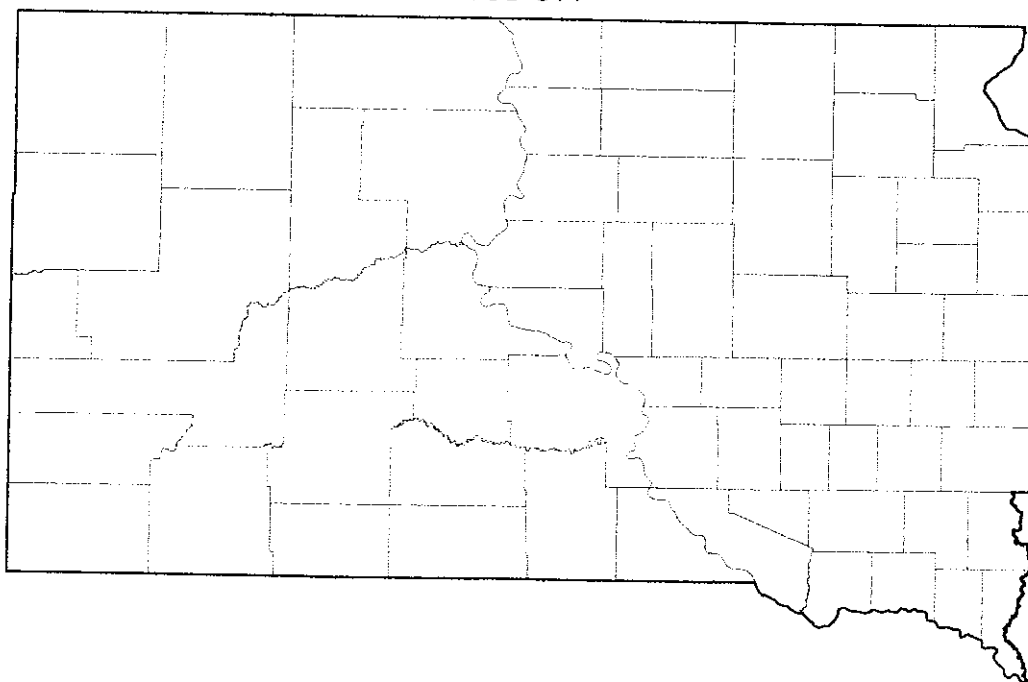
APPROVE _____ MODIFY _____ REJECT _____ NO ACTION _____

**Youth Deer Hunting Season
2016 "Antlerless License" Restrictions**

1. The Unit YOD-ST1 single-tag "any antlerless deer" license is valid statewide.
2. Youth deer hunters may purchase one (1) youth deer license.

Youth Deer Antlerless

YOD-ST1



GAME, FISH, AND PARKS COMMISSION ACTION PROPOSAL

5h

Custer State Park Deer Hunting Season Chapter 41.06:41

Commission Meeting Dates:	Proposal May 5-6, 2016 Public Hearing June 2, 2016 Finalization June 2-3, 2016	Custer State Park Watertown Watertown
----------------------------------	--	--

DEPARTMENT RECOMMENDATION

Season Dates: November 5-18, 2016

Licenses: 10 "Any Whitetail Deer" licenses
 30 "Antlerless Whitetail Deer" muzzleloader licenses

Requirements and Restrictions:

1. Season open from the first Saturday in November for 14 consecutive days.
2. Applicants successful in drawing an "any" tag type are ineligible for the license again for 10 years.

Recommended changes from last year:

1. Offer 10 more "antlerless whitetail deer" muzzleloader licenses.
2. Remove the language in administrative rule depicting the license type and number of licenses from each hunting unit.
3. Repeal Unit CUD-ZZ1.

SUPPORTIVE INFORMATION

Year	License Type	Applicants	WT Bucks Harvested	WT Does Harvested	MD Bucks Harvested	MD Does Harvested	All Deer Harvested	Success
2011	Any WT	1,831*	9		1		10	100%
	Any Deer		1		1		2	100%
	Antlerless WT			23			23	82%
2012	Any WT	1,825*	10				10	100%
	Any Deer				1		1	50%
2013	Any WT	1,474*	7				7	67%
	Antlerless WT			17			17	87%
2014	Any WT	1,755*	8				8	80%
	Antlerless WT			13			13	65%
2015	Any WT	1,755*	8				8	80%
	Antlerless WT			15			15	79%

*Number of applicants is for all seasons combined.

APPROVE _____	MODIFY _____	REJECT _____	NO ACTION _____
---------------	--------------	--------------	-----------------

GAME, FISH AND PARKS COMMISSION ADMINISTRATIVE ACTION

Deer Hunting Seasons – Hunting Unit License & Access Permit Allocations

Commission Meeting Dates:

Proposal	May 5-6, 2016	CSP
Public Hearing	June 2, 2016	Watertown
Finalization	June 2-3, 2016	Watertown

LICENSE & ACCESS PERMIT ALLOCATION BY SEASONS AND UNITS

Black Hills Deer Season

2015 – 2016 Tag Comparison

Unit	Resident Tags					
	Any Deer		Any Whitetail		Antlerless Whitetail	
	2015	2016	2015	2016	2015	2016
BD1						300
BD2						100
BD3						
BD4						
BH1	200	200	3,500	3,500		
TOTAL	200	200	3,500	3,500		400

2016 License Allocations

Unit	Resident Licenses		
	Any Deer	Any Whitetail	Antlerless Whitetail
BD1			300
BD2			100
BH1	200	3,500	
TOTAL	200	3,500	400

APPROVE _____	MODIFY _____	REJECT _____	NO ACTION _____
----------------------	---------------------	---------------------	------------------------

East River Deer Season

2015 – 2016 Tag Comparison

Unit #	Unit Name	Resident Tags							
		Any Deer Tags		Antlerless Deer Tags		Any Whitetail Tags		Antlerless Whitetail Tags	
		2015	2016	2015	2016	2015	2016	2015	2016
01A	Minnehaha	550	550		100				
03A	Brown	1,000	1,000	500	1,200				
04A	Beadle	600		400			650		650
05A	Codington	250	250						
06A	Brookings	450	450		100				
07A	Yankton	150	250						
07B	Yankton			50	75				
08A	Davison	300					300		
10A	Aurora	50				400	450	650	1,200
12A	Bon Homme					150	200		
12B	Bon Homme								50
13A	Brule	300	300			700	700	350	1,000
14A	Buffalo	100	100			250	250	50	350
16A	Campbell	20	20			400	400	300	1,000
17A	Charles Mix	150	150			300	300		100
18A	Clark	600	600						
19A	Clay	150	200						
22A	Day	600	600						
23A	Deuel	400	400						
25A	Douglas					250	250		75
26A	Edmunds	700	700	1,700	1,900				
28A	Faulk	600	600	2,400	3,600				
29A	Grant	300	300						
32A	Hamlin	600	600						
33A	Hand	20	20			500	450	500	1,250
34A	Hanson	300					300		
36A	Hughes	175	175			400	250	150	350
37A	Hutchinson					20	100		
38A	Hyde	20	20			500	500	1,300	1,300
40A	Jerauld	50				350	400	450	900
42A	Kingsbury	500	500	200	200				
43A	Lake	350	350		100				
44A	Lincoln	200	200						
46A	McCook	350	350		100				
47A	McPherson	500	500	300	1,500				
48A	Marshall	500	500						
51A	Miner	400	400	400	550				
52A	Moody	300	350		100				
54A	Potter	150	150			500	500	400	1,300
55A	Roberts	400	500						
56A	Sanborn	400		400			400		550
57A	Spink	900	900	400	400				
59A	Sully West	150	150			250	250	550	550
59B	Sully East	20	20			350	350	550	550
61A	Turner	100	100						
62A	Union	200	250						
63A	Walworth	50	50			400	400	300	1,000
	TOTAL	13,905	12,555	6,750	9,925	5,720	7,400	5,550	12,175

2016 License Allocations

51

Unit #	Unit Name	Resident Licenses									
		Any Deer	Antlerless Deer	Any Deer + 2 Antlerless Deer	3 Antlerless Deer	Any Deer + Antlerless Deer	2 Antlerless Deer	Any Whitetail	Antlerless Whitetail	Any Whitetail + Antlerless Whitetail	2 Antlerless Whitetail
01A	Minnehaha	550	100								
03A	Brown	1,000	1,200								
04A	Beadle							600	200	50	200
05A	Codington	250									
06A	Brookings	450	100								
07A	Yankton	250									
07B	Yankton		75								
08A	Davison										
10A	Aurora							300			
12A	Bon Homme							50	200	400	300
12B	Bon Homme							200			
13A	Brule	300									
14A	Buffalo	100								700	150
16A	Campbell	20								250	50
17A	Charles Mix	150								400	300
18A	Clark	600									
19A	Clay	200									
22A	Day	600									
23A	Deuel	400									
25A	Douglas										
26A	Edmunds					700	600	250	75		
28A	Faulk			600	800						
29A	Grant	300									
32A	Hamlin	600									
33A	Hand	20									
34A	Hanson									450	400
36A	Hughes	175						300			
37A	Hutchinson							250			175
38A	Hyde	20						100			
40A	Jerauld									500	400
42A	Kingsbury	500	200					50	50	350	250
43A	Lake	350	100								
44A	Lincoln	200									
46A	McCook	350	100								
47A	McPherson					500	500				
48A	Marshall	500									
51A	Miner	400	450					50			
52A	Moody	350	100								
54A	Potter	150									
55A	Roberts	500								500	400
56A	Sanborn										
57A	Spink	900	400					400	450		50
59A	Sully West	150									
59B	Sully East	20								250	150
61A	Turner	100								350	100
62A	Union	250									
63A	Walworth	50									
	TOTAL	10,755	2,825	600	800	1,200	1,150	2,800	1,125	4,600	3,225

CC 3

West River Deer Season

2015 - 2016 Tag Comparison

Unit #	Unit Name	Resident Tags							
		Any Deer Tags		Antlerless Deer Tags		Any Whitetail Tags		Antlerless Whitetail Tags	
		2015	2016	2015	2016	2015	2016	2015	2016
02A	Pennington	400	400			200	200	200	200
02C	Pennington	100	100			50	50		
11A	Bennett	150	150			100	100		
11B	Bennett	100	100			100	125		
15A	Butte	100	150			550	650	850	1,050
15B	Butte	650	150				500	200	800
20A	Corson	100	100			300	300		
21A	Custer	100	100			200	200		
21B	Custer	100	100						50
24A	Dewey	100	100			250	250	100	100
24B	Little Moreau					10	10	10	10
27A	Fall River	100	100						
27B	Fall River	200	200			200	200		100
27L	Fall River	15	10				10		
30A	Gregory	150	150			600	600	50	800
30B	Gregory	150	150			600	600	50	800
31A	Haakon	600	600			150	150	150	100
35A	Harding	150	200			150	250		200
35C	Harding	50	50			250	250		200
35L	Harding	100	125						
39A	Jackson	150	150			100	100		
39B	Jackson	250	250			100	150		
41A	Jones	300	200			250	350	150	350
45A	Lyman	200	100			450	550	750	850
45B	Lyman	50	50			200	200		
45C	Lyman	30	30					40	20
45D	Lyman	30	30			60	60		
49A	Meade	700	700			150	200		100
49B	Meade	700	700			400	400		300
50A	Mellette	150	150			200	200	100	100
50B	Mellette	250	250			250	250	100	100
53A	Perkins	300	300			350	350		750
53C	Perkins	500	500			300	400	300	1,000
58A	Stanley	150	150			200	200	200	200
58D	Stanley	5	5	5	5				
60A	Tripp	600	600			700	700	500	500
64A	Ziebach	300	300			200	200		
65A	Oglala Lakota	75	75						
67A	Todd	150	150						
	TOTAL	8,305	7,725	5	5	7,620	8,755	3,750	8,680

2016 License Allocations

Unit #	Unit Name	Resident Licenses					
		Any Deer	Antlerless Deer	Any Whitetail	Antlerless Whitetail	Any Whitetail + Antlerless Whitetail	2 Antlerless Whitetail
02A	Pennington	400				200	
02C	Pennington	100		50			
11A	Bennett	150		100			
11B	Bennett	100		125			
15A	Butte	150				650	200
15B	Butte	150				500	150
20A	Corson	100		300			
21A	Custer	100		200			
21B	Custer	100			50		
24A	Dewey	100		250	100		
24B	Little Moreau			10	10		
27A	Fall River	100					
27B	Fall River	200		200	100		
27L	Fall River	10		10			
30A	Gregory	150				600	100
30B	Gregory	150				600	100
31A	Haakon	600		150	100		
35A	Harding	200		250	200		
35C	Harding	50		250	200		
35L	Harding	125					
39A	Jackson	150		100			
39B	Jackson	250		150			
41A	Jones	200				350	
45A	Lyman	100				550	150
45B	Lyman	50		200			
45C	Lyman	30					20
45D	Lyman	30		60			
49A	Meade	700		200	100		
49B	Meade	700		400	300		
50A	Mellette	150		200	100		
50B	Mellette	250		250	100		
53A	Perkins	300				350	200
53C	Perkins	500				400	300
58A	Stanley	150		200	200		
58D	Stanley	5	5				
60A	Tripp	600		700	500		
64A	Ziebach	300		200			
65A	Oglala Lakota	75					
67A	Todd	150					
	TOTAL	7,725	5	4,555	2,060	4,200	1,220

Refuge Deer Seasons

2015 - 2016 Tag Comparison

Unit	Resident Tags			
	Any Deer		Any Antlerless Deer	
	2015	2016	2015	2016
Lacreek Refuge				
RFD-LC1	15	5		
RFD-LC2	15	15		
Sand Lake Refuge				
RFD-SL1	20	20	10	10
RFD-SL2	20	20	10	10
RFD-SL3	20	20	10	10
RFD-SL4	20	20	10	10
RFD-SL5	20	20	10	10
Waubay Refuge				
RFD-WA1	10	10		
RFD-WA2	10	10		
RFD-WA3	10	10		
TOTAL	160	150	50	50

2016 License Allocations

Unit	Resident Licenses	
	Any Deer	Any Antlerless Deer
Lacreek Refuge		
RFD-LC1	5	
RFD-LC2	15	
Sand Lake Refuge		
RFD-SL1	20	10
RFD-SL2	20	10
RFD-SL3	20	10
RFD-SL4	20	10
RFD-SL5	20	10
Waubay Refuge		
RFD-WA1	10	
RFD-WA2	10	
RFD-WA3	10	
TOTAL	150	50

Muzzleloader Deer Season

2015 – 2016 Tag Comparison

	Resident Tags	
	Any Deer	
	2015	2016
Statewide	1,000	1,000
TOTAL	1,000	1,000

2016 License Allocations

	Resident Licenses
	Any Deer
Statewide	1,000
TOTAL	1,000

Custer State Park Deer Season

2015 – 2016 Tag Comparison

	Resident Tags			
	Any Whitetail Deer		Antlerless Whitetail Deer	
	2015	2016	2015	2016
Custer State Park	10	10	20	30
TOTAL	10	10	20	30

2016 License Allocations

	Resident Licenses	
	Any Whitetail Deer	Antlerless Whitetail Deer
Custer State Park	10	30
TOTAL	10	30

Access Permits – Archery Deer Season

2015 – 2016 Access Permit Comparison

Designated Area	Number of Access Permits			
	Any Deer		Antlerless Whitetail Deer	
	2015	2016	2015	2016
Adams Homestead and Nature Preserve	5	5	20	25
Good Earth State Park	5	5	0	0
TOTAL	10	10	20	25

2016 Access Permit Allocations

Designated Area	Number of Access Permits	
	Any Deer	Antlerless Whitetail Deer
Adams Homestead and Nature Preserve	5	25
Good Earth State Park	5	0
TOTAL	10	25

GAME, FISH, AND PARKS COMMISSION ACTION
PROPOSAL

5J

Application for License
Chapter 41:06:01

Commission Meeting Dates:	Proposal	May 5-6, 2016	Custer State Park
	Public Hearing	June 2, 2016	Watertown
	Finalization	June 2-3, 2016	Watertown

DEPARTMENT RECOMMENDATION

Current Rule

41:06:01:13. Designation of areas where free antlerless deer licenses can be used by farmers and ranchers. Antlerless licenses authorized by SDCL 41-6-19.8 may be issued to any qualifying farmer or rancher for use in the West River, East River, Youth, Archery, and Muzzleloading deer hunting units where at least one antlerless deer tag is available after the second lottery drawing from the previous year East River and West River deer seasons. However, no such free antlerless license is valid in counties where antlerless archery or a muzzleloader license is restricted. The requirements and equipment restrictions for each deer season apply to any free antlerless license issued.

Recommended changes:

1. Repeal language referencing licenses available after second lottery drawing from the previous year and to those counties where antlerless archery and muzzleloader licenses are restricted.
2. Make "antlerless whitetail deer" licenses available to those eligible applicants in hunting units which offer a deer license with multiple tags for antlerless deer (e.g. double or triple "any antlerless deer" or "antlerless whitetail deer" tags) in the lottery drawing for the East River and West River deer seasons (see attached map).

SUPPORTIVE INFORMATION

The recommended changes will allow the Department to make free antlerless deer licenses available to qualifying farmers and ranchers in designated areas in accordance with current harvest management objectives.

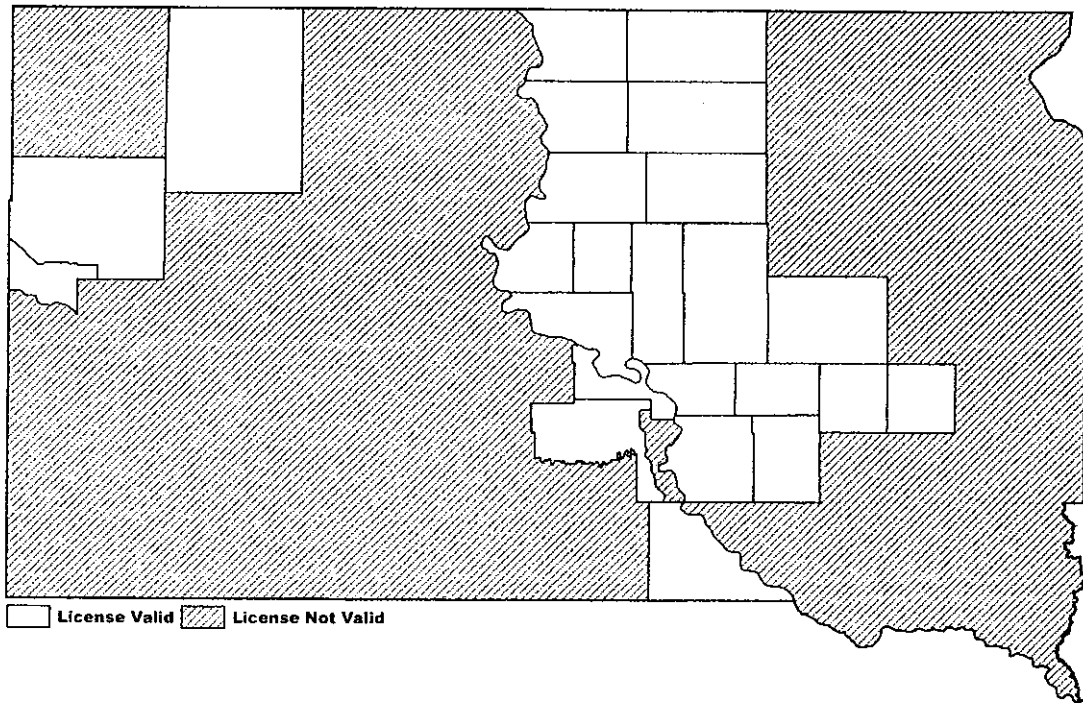
APPROVE _____ MODIFY _____ REJECT _____ NO ACTION _____

1

Landowner Free Antlerless Deer License

1. **41:06:01:13. Designation of areas where free antlerless deer licenses can be used by farmers and ranchers.** Antlerless licenses authorized by SDCL 41-6-19.8 may be issued to any qualifying farmer or rancher for use in the West River, East River, Youth, Archery, and Muzzleloading deer hunting seasons. "Antlerless whitetail" deer licenses will be available to qualifying applicants in hunting units which offer a deer license with multiple tags for antlerless deer (e.g. double or triple tag "any antlerless" deer and "antlerless whitetail" deer licenses) in the lottery drawing for the East River and West River deer seasons. The requirements and equipment restrictions for each deer season apply to any free antlerless license issued.

2016 Landowner Free Antlerless Whitetail Deer License Map



Comes, Rachel

From: Glenn Spitzer <gdspitzer@nvc.net>
Sent: Friday, April 15, 2016 11:41 AM
To: Comes, Rachel
Subject: Petition for Rule Change

Petition for Rule Change

First Name: Glenn

Last Name: Spitzer

Address: 824 14th Ave SE
Aberdeen, SD 57401

Phone Number: 605-725-0824

Email Address: gdspitzer@nvc.net

Rule Identification: 41:06:44:02

scribe the change you are seeking: Add the following lines. A limited number of "any deer" may be issued for this season. The "any deer" licenses are valid on private property only.

Explain the reason for the described change: Hopefully, this will draw more youth hunters to the sport and enhance the experience of those who choose to participate. Deer are very destructive. The only chance a landowner has to control the deer population on his land is during the November season. By that time, the tree damage is already done. This would give landowners with depredaton problems another option.

RESOLUTION 16 - 06

WHEREAS, South Dakota Parks and Wildlife Foundation owns real estate described as follows:

Tract 1A of Good Earth Park Entrance Addition in the Northwest Quarter (NW¼) of Section 14, Township 100 North, Range 49 West of the 5th P.M., Lincoln County, South Dakota, according to the recorded plat thereof (hereinafter "the Property"); and

WHEREAS, South Dakota Parks and Wildlife Foundation, Inc. desires to gift the Property to the South Dakota Department of Game, Fish and Parks (Department) as an addition to Good Earth State Park in Lincoln County, South Dakota; and

WHEREAS, the Department has evaluated and determined that the Property would serve very well as an addition to Good Earth State Park, providing park and public recreational opportunities; and

WHEREAS, the Department is authorized to accept gifts of property for park and recreational purposes per SDCL §§ 41-2-19 and 41-2-24; and

WHEREAS, the South Dakota Game, Fish & Parks Commission desires to authorize the Department to accept this gift of property from the South Dakota Parks and Wildlife Foundation to be used as an addition to Good Earth State Park, and further acknowledge the generosity of South Dakota Parks and Wildlife Foundation.

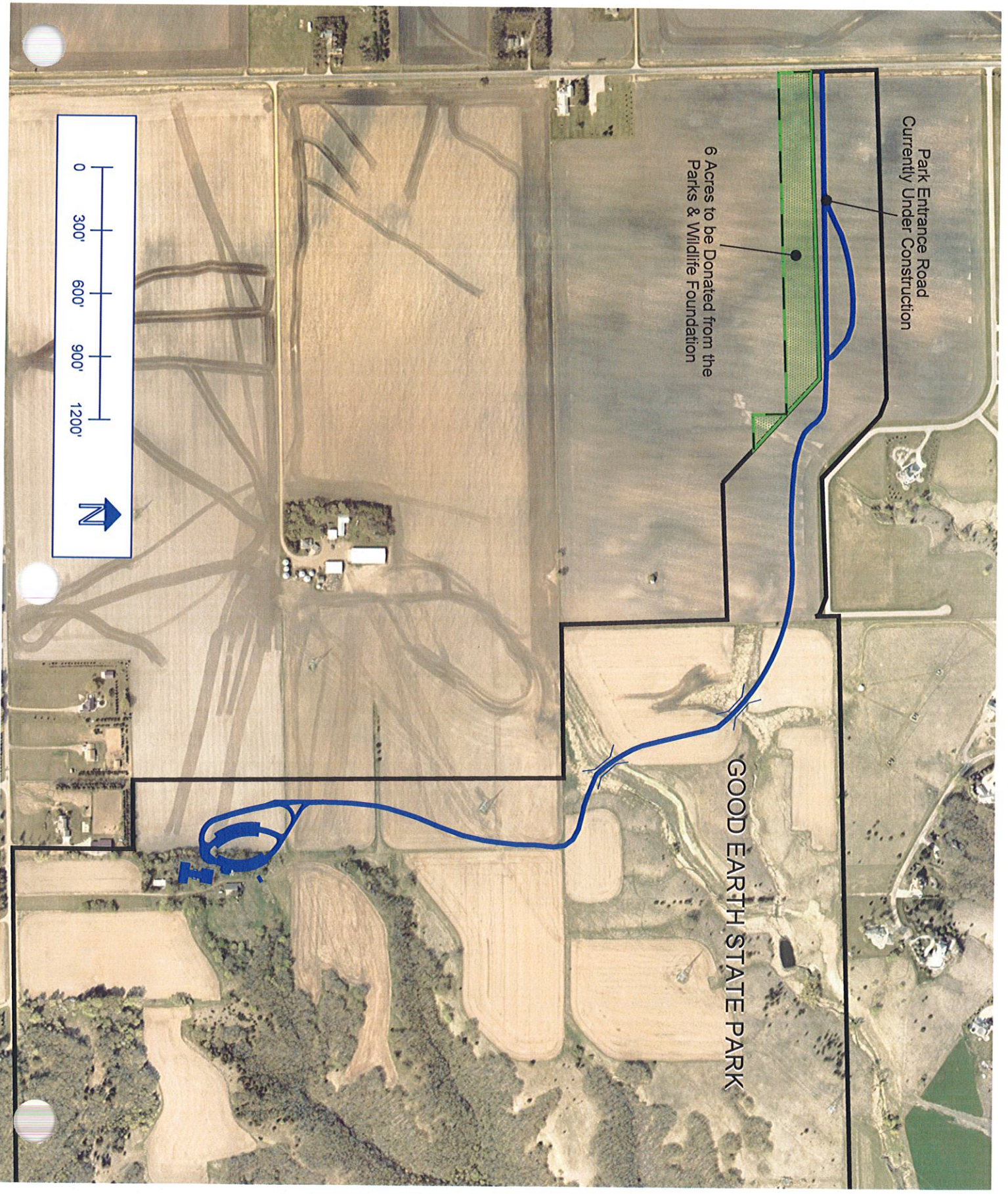
NOW, THEREFORE, BE IT RESOLVED, that the South Dakota Game, Fish and Parks Commission does hereby authorize the Department to accept the gift of the Property from South Dakota Parks and Wildlife Foundation to be used as an addition to Good Earth State Park.

BE IT FURTHER RESOLVED that the South Dakota Game, Fish & Parks Commission, on behalf of the citizens of South Dakota, does hereby acknowledge and express its deepest appreciation and gratitude to South Dakota Parks and Wildlife Foundation for its generosity and ongoing support for Good Earth State Park, and further acknowledge the outdoor recreational opportunities this gift will provide to South Dakotans for generations to come.

Park Entrance Road
Currently Under Construction

6 Acres to be Donated from the
Parks & Wildlife Foundation

GOOD EARTH STATE PARK



9

January to April 2016 Revenue Comparison by Item

	2015		2016		% Change
	Number	Dollar	Number	Dollar	
Annual	3,995	\$ 119,844	4,621	\$ 138,615	16%
Second Vehicle	591	\$ 8,865	720	\$ 10,800	22%
Combo	3,898	\$ 175,410	3,873	\$ 174,270	-1%
Transferable	367	\$ 23,855	345	\$ 22,427	-6%
Daily / Person	1,168	\$ 4,672	1,179	\$ 4,718	1%
Daily / Vehicle	2,435	\$ 14,609	2,577	\$ 15,465	6%
Unattended Vehicle Daily	121	\$ 1,211	80	\$ 800	-34%
Motorcoach Permit	4	\$ 12	215	\$ 645	
GSM Annual Trail Pass	499	\$ 7,485	514	\$ 7,710	3%
GSM Daily Trail Pass	517	\$ 1,551	304	\$ 1,216	-22%
CSP Temp Daily / Vehicle	3,770	\$ 56,548	4,304	\$ 86,075	52%
Bike Band	27	\$ 270	50	\$ 502	86%
One-Day Special Event	N/A	\$ 1,400	N/A	\$ 875	-38%
PERMITS	17,392	\$ 415,732	18,782	\$ 464,117	12%
Camping Services Permits	-	\$ 3,689,475	-	\$ 3,964,508	7%
Gift Card	-	\$ 2,410	-	\$ 3,510	46%
Picnic Reservations	-	\$ 6,610	-	\$ 600	-91%
Firewood	566	\$ 2,828	432	\$ 2,159	-24%
ODGING	566	\$ 3,701,323	432	\$ 3,970,777	7%
TOTAL	17,957	\$ 4,117,055	19,214	\$ 4,434,893	8%

April 2016 YTD Revenue Comparison by District

9a

LOCATION	2015	2016	%
Fort Sisseton	\$ 13,868	\$ 15,077	9%
Roy Lake	\$ 76,774	\$ 85,275	11%
Sica Hollow	\$ 112	\$ 380	239%
DISTRICT 1	\$ 90,754	\$ 100,732	11%
Richmond Lake	\$ 15,133	\$ 15,589	3%
Mina Lake	\$ 41,618	\$ 40,923	-2%
Lake Louise	\$ 17,011	\$ 16,873	-1%
Fisher Grove	\$ 5,470	\$ 6,886	26%
Amsden	\$ 12	\$ 35	190%
DISTRICT 2	\$ 79,244	\$ 80,305	1%
Sandy Shore	\$ 9,399	\$ 13,182	40%
Hartford Beach	\$ 45,507	\$ 49,808	9%
Lake Cochrane	\$ 20,967	\$ 22,802	9%
Pelican Lake	\$ 50,496	\$ 51,732	2%
Pickrel Lake	\$ 86,137	\$ 86,461	0%
DISTRICT 3	\$ 212,506	\$ 223,985	5%
Oakwood Lakes	\$ 91,505	\$ 97,633	7%
Lake Poinsett	\$ 80,129	\$ 88,065	10%
Lake Thompsor	\$ 96,681	\$ 102,216	6%
DISTRICT 4	\$ 268,315	\$ 287,914	7%
Lake Herman	\$ 61,986	\$ 67,535	9%
Walkers Point	\$ 25,511	\$ 30,080	18%
DISTRICT 5	\$ 87,497	\$ 97,616	12%
Snake Creek	\$ 115,547	\$ 118,319	2%
Platte Creek	\$ 13,702	\$ 12,939	-6%
Burke Lake	\$ 522	\$ 734	41%
Buryanek	\$ 26,843	\$ 33,186	24%
DISTRICT 6	\$ 156,614	\$ 165,178	5%
Palisades	\$ 64,075	\$ 70,116	9%
Lake Vermillion	\$ 84,531	\$ 94,322	12%
Big Sioux	\$ 52,778	\$ 61,063	16%
DISTRICT 7	\$ 201,384	\$ 225,501	12%
Newton Hills	\$ 139,003	\$ 134,804	-3%
Lake Alvin	\$ 1,880	\$ 972	-48%
Union Grove	\$ 8,592	\$ 8,450	-2%
Adams	\$ 271	\$ 1,581	483%
DISTRICT 8	\$ 149,746	\$ 145,807	-3%

LOCATION	2015	2016	%
Lewis & Clark	\$ 452,247	\$ 455,042	1%
Springfield	\$ 9,927	\$ 8,818	-11%
Chief White Crane	\$ 126,908	\$ 134,299	6%
Pierson Ranch	\$ 45,758	\$ 44,263	-3%
Tabor	\$ 12	\$ -	-100%
Sand Creek	\$ 29	\$ 24	-17%
DISTRICT 9	\$ 634,881	\$ 642,446	1%
White Swan	\$ -	\$ -	
South Scalp	\$ 57	\$ 93	63%
South Shore	\$ 35	\$ 119	241%
North Point	\$ 146,425	\$ 150,713	3%
Pease Creek	\$ 11,300	\$ 12,689	12%
Randall Creek	\$ 66,901	\$ 71,573	7%
Whetstone	\$ -	\$ 279	
North Wheeler	\$ 111	\$ 54	-51%
DISTRICT 10	\$ 224,829	\$ 235,521	5%
Farm Island	\$ 75,160	\$ 84,855	13%
West Bend	\$ 107,428	\$ 114,385	6%
DISTRICT 11	\$ 182,588	\$ 199,240	9%
Okobojo	\$ 96	\$ 55	
Oahe Downstream	\$ 125,801	\$ 139,125	11%
Spring Creek	\$ 8,285	\$ 8,085	-2%
Cow Creek	\$ 22,004	\$ 26,127	19%
DISTRICT 12	\$ 156,186	\$ 173,392	11%
East Whitlock	\$ -	\$ 24	
West Whitlock	\$ 45,381	\$ 49,725	10%
Lake Hiddenwood	\$ 740	\$ 1,191	61%
Swan Creek	\$ 4,007	\$ 5,125	28%
Indian Creek	\$ 58,691	\$ 65,657	12%
West Pollock	\$ 4,811	\$ 7,236	50%
WalthBay	\$ 274	\$ 56	-80%
Revheim Bay	\$ 112	\$ 92	-18%
DISTRICT 13	\$ 114,016	\$ 129,104	13%
Mickelson Trail	\$ 15,336	\$ 14,711	-4%
Bear Butte	\$ 2,793	\$ 3,177	14%
DISTRICT 14	\$ 18,129	\$ 17,888	-1%
Shadehill	\$ 96,552	\$ 114,312	18%
Llewellyn Johns	\$ 2,203	\$ 3,375	53%
Rocky Point	\$ 44,615	\$ 61,217	37%
DISTRICT 15	\$ 143,370	\$ 178,904	25%
Custer	\$ 1,104,869	\$ 1,197,762	8%
DISTRICT 16	\$ 1,104,869	\$ 1,197,762	8%
Angostura	\$ 170,756	\$ 194,943	14%
Sheps Canyon	\$ 25,843	\$ 30,085	16%
DISTRICT 17	\$ 196,599	\$ 225,028	14%
PIERRE OFFICE	\$ 95,528	\$ 108,572	14%
TOTAL:	\$ 4,117,055	\$ 4,434,893	8%

9b

DIVISION OF PARKS AND RECREATION
January to April 2016 Camping Unit Comparison by District

Dist	Park	2015	2016	%
		Units	Units	
1	Fort Sisseton	7	20	186%
	Roy Lake	21	45	114%
	Sica Hollow	-	3	
	District 1	28	68	143%
2	Richmond Lake	16	36	125%
	Mina Lake	33	33	0%
	Lake Louise	23	12	-48%
	Fisher Grove	4	20	400%
	Amsden	1	3	200%
	District 2	77	104	35%
3	Sandy Shore	4	8	100%
	Hartford Beach	123	206	67%
	Lake Cochrane	1	14	
	Pelican South	51	48	-6%
	Pickerel Lake	52	103	98%
	District 3	231	379	64%
4	Oakwood Lakes	129	137	6%
	Lake Poinsett	51	82	61%
	Lake Thompson	105	83	-21%
	District 4	285	302	6%
5	Lake Herman	60	144	140%
	Walkers Point	25	54	116%
	Lake Carthage		-	
District 5	85	198	133%	
6	Snake Creek	169	186	10%
	Platte Creek	37	18	-51%
	Burke Lake	1	9	
	Buryanek	82	98	20%
	District 6	289	311	8%
7	Palisades	271	410	51%
	Lake Vermillion	177	503	184%
	Big Sioux	213	462	117%
	District 7	661	1,375	108%
8	Newton Hills	320	380	19%
	Union Grove	71	97	37%
	District 8	391	477	22%

Dist	Park	2015	2016	%
		Units	Units	
9	Lewis & Clark	741	707	-5%
	Tabor		-	
	Sand Creek	2	5	150%
	Springfield	17	5	-71%
	Chief White Crane	130	272	109%
	Pierson Ranch	76	81	7%
	District 9	966	1,070	11%
	10	North Point	131	129
North Wheeler		9	4	-56%
Pease Creek		27	24	-11%
Randall Creek		1	40	
South Shore		3	10	233%
Whetstone Bay			20	
White Swan			-	
South Scalp		5	8	60%
District 10	176	235	34%	
11	Farm Island	143	269	88%
	West Bend	161	144	-11%
	District 11	304	413	36%
12	Oahe Downstream	302	585	94%
	Cow Creek	34	55	62%
	Okobojo Point	10	4	-60%
	District 12	346	644	86%
13	West Whitlock	31	18	-42%
	Lake Hiddenwood	10	4	-60%
	East Whitlock	-	1	
	Swan Creek	2	5	150%
	Indian Creek	48	103	115%
	Walth Bay		-	
	West Pollock	2	10	400%
District 13	93	141	52%	
14	Bear Butte	14	30	114%
	District 14	14	30	114%
15	Shadehill	31	75	142%
	Llewellyn Johns	4	1	-75%
	Rocky Point	153	269	76%
	District 15	188	345	84%
16	Custer	800	890	11%
	District 16	800	890	11%
17	Angostura	564	1,111	97%
	Sheps Canyon	23	42	83%
	District 17	587	1,153	96%
TOTAL FEE AREA				
CAMPER UNITS		5,521	8,135	47%

9c

**DIVISION OF PARKS AND RECREATION
January to April 2016 Visitation Comparison**

Dist	Park	2015	2016	% Change
1	Fort Sisseton	5,095	3,824	-25%
	Roy Lake	13,385	13,676	2%
	Sica Hollow	2,124	1,837	-14%
	District 1	20,604	19,337	-6%
2	Richmond Lake	6,477	5,986	-8%
	Mina Lake	3,811	4,709	24%
	Lake Louise	2,645	3,913	48%
	Fisher Grove	2,090	2,146	3%
	District 2	15,023	16,754	12%
3	Sandy Shore	3,380	1,653	-51%
	Hartford Beach	20,840	17,935	-14%
	Lake Cochrane	555	208	-63%
	Pelican	1,808	1,729	-4%
	Pickerel Lake	2,639	2,930	11%
District 3	29,222	24,455	-16%	
4	Oakwood Lakes	5,562	7,527	35%
	Lake Poinsett	4,964	8,055	62%
	Lake Thompson	7,267	6,170	-15%
	District 4	17,793	21,752	22%
5	Lake Herman	16,023	17,088	7%
	Walkers Point	4,155	4,201	1%
	District 5	20,178	21,289	6%
6	Snake Creek	18,084	14,532	-20%
	Platte Creek	13,365	10,469	-22%
	Burke Lake	4,491	5,022	12%
	Buryanek	5,973	6,427	8%
	District 6	41,913	36,450	-13%
7	Palisades	13,008	15,431	19%
	Lake Vermillion	11,845	12,660	7%
	Big Sioux	8,717	9,832	13%
	Beaver Creek	6,435	5,819	-10%
District 7	40,005	43,742	9%	
8	Newton Hills	17,170	12,851	-25%
	Good Earth	6,726	7,175	7%
	Lake Alvin	9,163	6,583	-28%
	Union Grove	3,159	2,007	-36%
	Adams	6,611	8,945	35%
	Spirit Mound	4,496	3,141	-30%
	District 8	47,325	40,702	-14%

Dist	Park	2015	2016	% Change
9	Lewis & Clark	96,371	92,745	-4%
	Springfield	25,100	20,535	-18%
	Chief White Crane	2,636	2,749	4%
	Pierson Ranch	8,024	11,374	42%
	District 9	132,131	127,403	-4%
10	North Point	14,425	16,579	15%
	North Wheeler	3,619	3,463	-4%
	Pease Creek	3,238	6,177	91%
	Randall Creek	9,453	6,152	-35%
	Ft. Randall Boat Club	1,173	1,162	-1%
	District 10	31,908	33,533	5%
11	Farm Island	26,431	16,434	-38%
	West Bend	3,661	1,917	-48%
	LaFramboise Island	24,157	11,266	-53%
	District 11	54,249	29,617	-45%
12	Oahe Downstream	63,493	95,061	50%
	Cow Creek	43,453	38,321	-12%
	Okobojo Point	3,802	5,786	52%
	Spring Creek	11,305	14,983	33%
	District 12	122,053	154,151	26%
	13	West Whitlock	7,413	6,780
Lake Hiddenwood		5,639	4,195	-26%
Swan Creek		9,945	8,729	-12%
Indian Creek		16,792	9,952	-41%
Revheim Bay		12,492	13,317	7%
West Pollock		11,437	12,345	8%
District 13		63,718	55,318	-13%
14	Bear Butte	8,409	9,424	12%
	District 14	8,409	9,424	12%
15	Shadehill	3,346	3,950	18%
	Llewellyn Johns	714	724	1%
	Little Moreau	2,936	2,882	-2%
	Rocky Point	11,746	15,343	31%
	District 15	18,742	22,899	22%
16	Custer	216,482	247,446	14%
	District 16	216,482	247,446	14%
17	Angostura	24,376	24,456	0%
	Sheps Canyon	8,437	8,625	2%
	District 17	32,813	33,081	1%
TOTALS:		912,568	937,353	3%

**South Dakota Department of Game, Fish & Parks - Wildlife Division
Land Acquisition and Disposal Report
May 2016**

Action Items

None

Information Items – The following proposed acquisitions have been advertised per SDCL 41-4-1.1, and will be brought to the GFP Commission for final action at the June 2016 meeting.

Wetlands America Trust Addition to Swan Lake GPA

Location: Five miles northeast of Bradley in Clark County

Description: 240 acres

Management Objective: Game Production Area – wildlife habitat management and public hunting access

Cost: \$511,000.00

Expected Closing: July 2016

Wetlands America Trust Addition to Odessa #1 GPA

Location: Nine miles southwest of Long Lake in McPherson County

Description: 80 acres

Management Objective: Game Production Area – wildlife habitat management and public hunting access

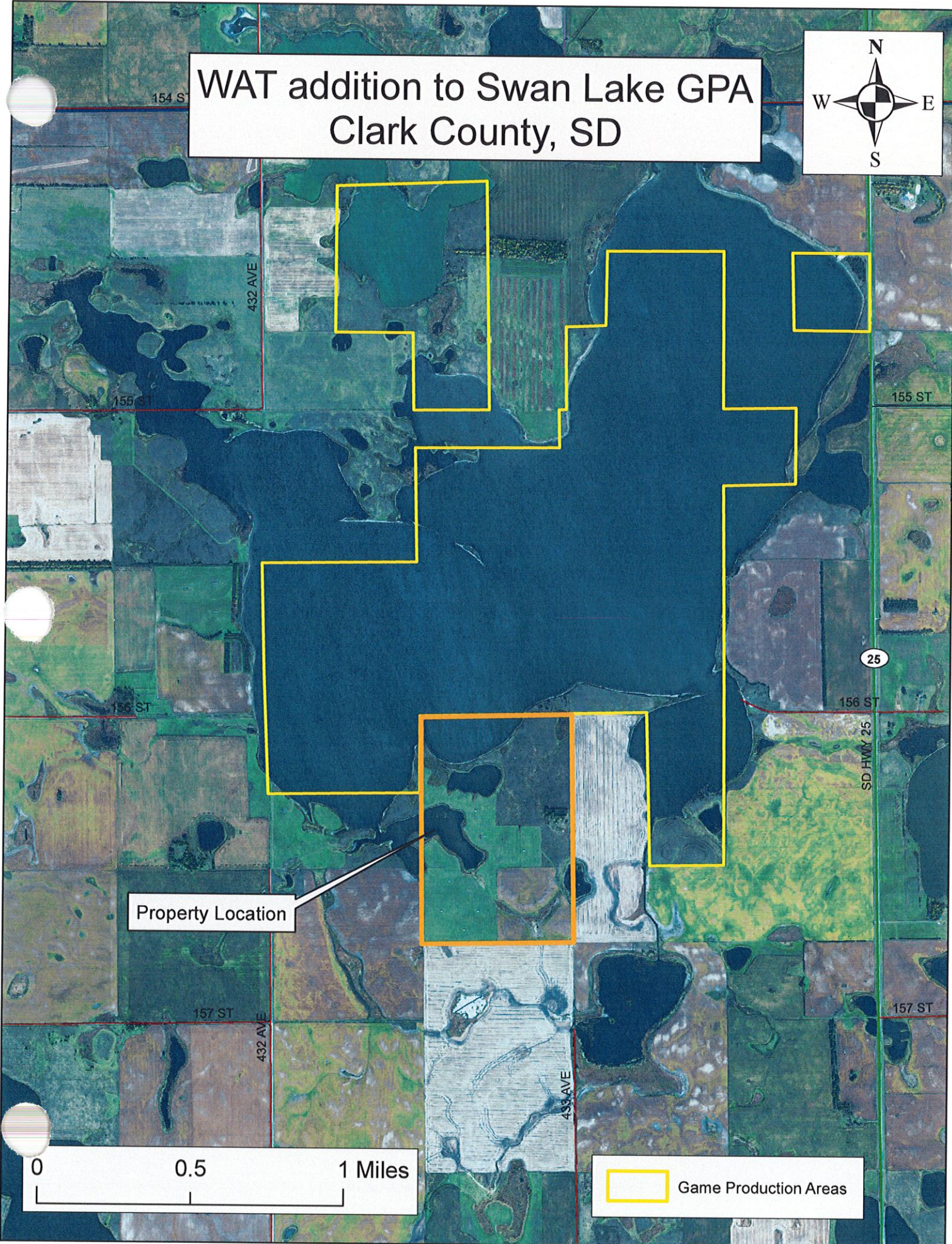
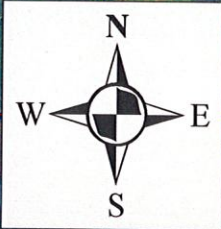
Cost: \$84,000.00

Expected Closing: July 2016


Early Development Projects

None

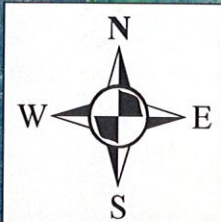
WAT addition to Swan Lake GPA Clark County, SD



Property Location

 Game Production Areas

WAT addition to Odessa #1 GPA McPherson County, SD



109 ST

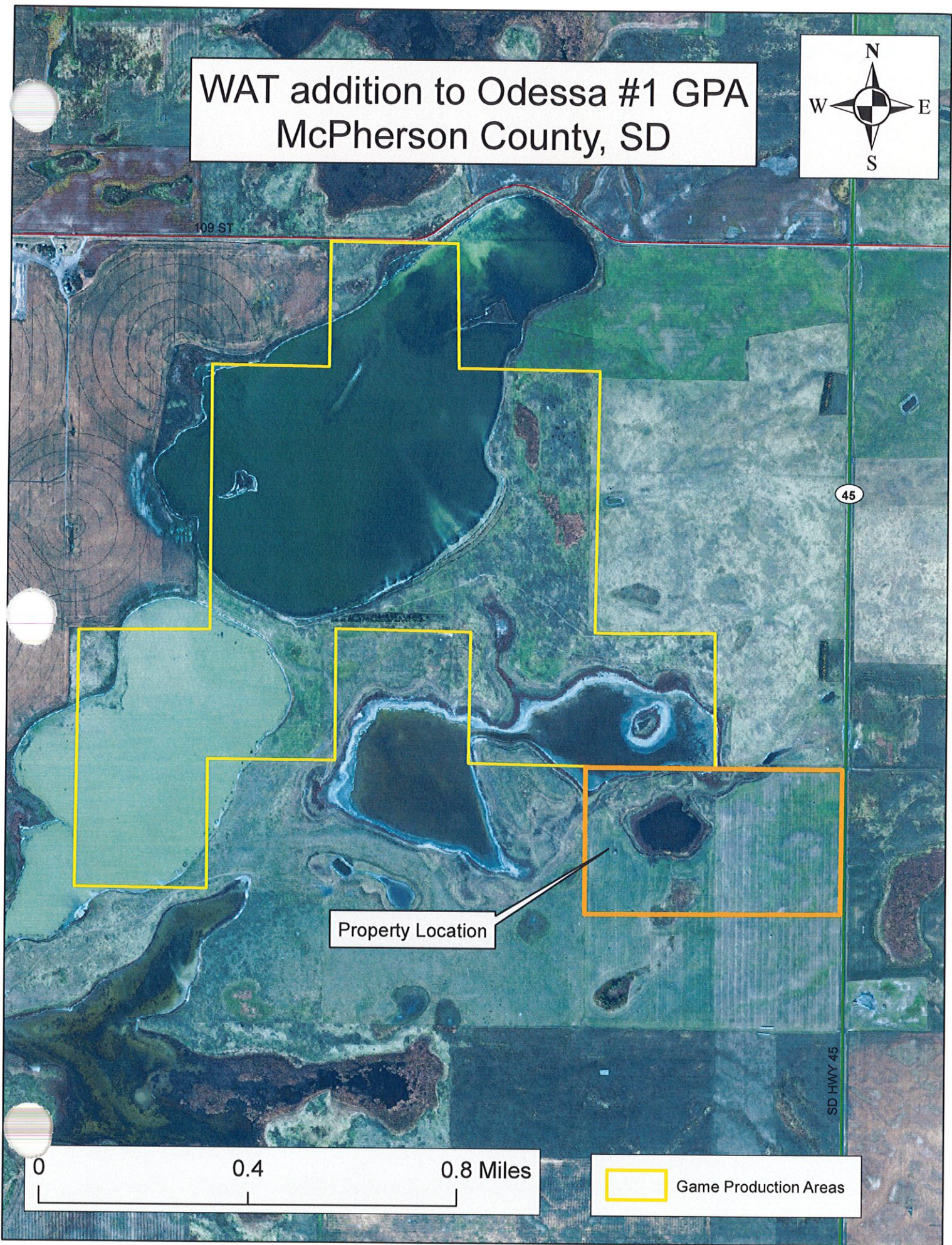
45

SD HWY 45

Property Location

0 0.4 0.8 Miles

 Game Production Areas



License Sales Totals

(as of May 2)

date updated: 2 May 2016

Resident	2016	2015
Combination	29,971	29,540
Junior Combination	3,035	3,163
Senior Combination	5,928	5,557
Small Game	1,399	1,411
Youth Small Game	697	738
1-Day Small Game	229	192
Migratory Bird Certificate	12,089	12,808
Predator/Varmint	1,130	924
Furbearer	2,096	2,229
Annual Fishing	25,883	27,367
Senior Fishing	6,565	6,706
1-Day Fishing	845	913
Gamefish Spearing/Archery	1,753	1,853

Nonresident	2016	2015
Small Game	2,811	2,852
Youth Small Game	210	179
Annual Shooting Preserve	72	95
5-day Shooting Preserve	561	539
1-day Shooting Preserve	299	225
Spring Light Goose	3,967	4,249
Youth Spring Light Goose	138	161
Migratory Bird Certificate	156	60
Predator/Varmint	901	894
Furbearer	2	4
Annual Fishing	12,091	11,367
Family Fishing	3,729	3,832
Youth Annual Fishing	533	417
3-Day Fishing	5,090	4,678
1-Day Fishing	3,249	3,059
Gamefish Spearing/Archery	460	389
TOTAL ON FILE =	125,889	126,401

Nonresident Fishing License Sales

