

AGENDA - Revised
Game, Fish and Parks Commission
January 14-15, 2016
RedRossa Convention Center
808 W. Sioux Ave., Pierre, SD

Call to order 1:00 PM CDT

Executive Session

Division of Administration

Action Items:

1. Approve Minutes of the December 2015 Meeting
<http://gfp.sd.gov/agency/commission/docs/2015/december-meeting-minutes.pdf>
2. Additional Commissioner Salary Days
3. Election of Officers
4. License List Request

Information Items:

5. GFP-sponsored legislation for 2016 legislation session

Proposals

6. Resolutions for allocations of limited-draw hunting and paddlefish licenses
7. Repeal of Dry Creek Waterfowl Refuge in Sully County

2:00 PM Public Hearing

Finalizations

8. Authorization for Terminally Ill Person to Hunt

Open Forum

Division of Parks and Recreation

Action Items:

9. Spearfish Falls Acquisition
10. Roy Lake Concession
11. Oahe Marina Concession

Information Items:

12. Good Earth State Park Development Update
13. Custer State Park Visitor Center and Resort Improvements Construction Update
14. Concession Review
15. Revenue, Camping and Visitation Reports

Division of Wildlife

Action Items:

16. Big Sioux Lake Access Site in Moody County

Information Items:

17. Land Acquisition Guidance Document Update
18. Management Plan Report Schedule for 2016
19. DNA Marker Sample of Mountain Lions
20. Winter Lake Access Program Update
21. Buck Deer Radio Collaring Update
22. Year-end License Sales Summary
23. DOW Distinguished Achievement award
24. Pactola Basin Project Update

Adjourn

Next meeting information:

March 3-4, 2016
RedRossa Convention Center
808 W. Sioux Ave., Pierre, SD

Minutes of the Game, Fish, and Parks Commission
December 10-11, 2015

Chairman Cooper called the meeting to order at 1:00 p.m. CDT at the RedRossa in Pierre, South Dakota. Commissioners John Cooper, Cathy Peterson, H. Paul Dennert, Barry Jensen, Gary Jensen, Jim Spies and W. Scott Phillips were present. Secretary Kelly Hepler was present along with approximately 40 public, staff, and media.

DIVISION OF ADMINISTRATION

Approval of Minutes

Chairman Cooper called for any additions or corrections to the November 5-6, 2015, minutes or a motion for approval.

Motion by B. Jensen with second by Spies TO APPROVE THE MINUTES OF THE NOVEMBER 5-6, 2015, MEETING. Motion carried unanimously.

Additional Commissioner Salary Days

Commissioner Dennert requested two additional salary days.

Motion by Peterson with second by Phillips TO APPROVE THE ADDITIONAL SALARY DAYS AS REQUESTED. Motion carried unanimously.

2016 Meeting Schedule

Chris Petersen, Administration Division Director presented the 2016 Commission Meeting Calendar

Motion by B. Jensen with second by Spies TO APPROVE THE 2016 COMMISSION MEETING SCHEDULE AS PRESENTED. Motion carried unanimously.

License List Requests

Chris Petersen, Administration Division Director presented a license list request for preserve license lists from Prairie Sky Game Ranch and Guest Lodge, LLC to be used for marketing purposes.

Motion by Dennert with second by Peterson TO APPROVE THE LICENSE LIST REQUEST. Motion carried unanimously.

A license list request was received from the Pierre Area Chamber of Commerce and Convention and Visitors Bureau to be used to promote hunting and fishing in the Pierre area.

Motion by G. Jensen with second by Phillips TO APPROVE THE LICENSE LIST REQUEST. Motion carried unanimously.

Analysis of Economics Related to GFP

Chief Scott Simpson presented the Departments plan to work with Southwick Associates to produce economic contribution information. Simpson noted they will be looking at multiple licensing groups such as fishing, waterfowl, small and big game by resident and nonresident by location. In addition to utilizing current survey data there will be an email survey to minimize costs and get feedback and provide solid information to the Commission within the next 6 months.

Parks and Wildlife Foundation Update

Larry Ness, chairman of the South Dakota Parks and Wildlife Foundation presented highlights on current projects including fundraising, activities and ongoing management to the Commission. Since 2009 the Foundation has helped raise 12.1 million in contributions and pledges. The Foundation currently owns or manages 1,420 acres of land to support Department objectives including 720 acres of land near Avon for game production, 450 acres of land at the Adams Homestead and Nature Preserve and 250 acres of land at Good Earth State Park. Additionally, the Foundation manages 25 project accounts to support various GFP properties and projects statewide.

PROPOSALS

Bighorn Sheep Hunting Season

Assistant Director Tom Kirschenman presented the two year recommendation for three licenses within the season dates of September 1 – December 31, 2016. Per administrative rule a minimum of one license must be an auction license. One license would be issued in unit one which consists of a portion of Pennington County and unit two would be issued two licenses, one of which will be the auction license, Unit two is will be the Elk Mountain unit that GFP shares with the state of Wyoming. This will be for two years unless there is something that would require staff to present change to Commission.

Staff continues to monitor domestic herds and update database as they are aware of changes. Staff also speak with individual owners and provide info for alternative management.

Cooper stated that a motion is not required, just a two year recommendation in 2017 unless an issue comes up in the management plan.

Authorization for Terminally Ill Persons to Hunt

Director Tony Leif provided background noting recent action in other states passing legislation to allow for the ability to grant these licenses to individuals with limited life expectancy. He also mentioned the inquiry from Verne Boer and the Outdoor Adventure Foundation. Upon research it was realized that legislation is not required in South Dakota to make an allocation for licenses for terminally ill persons to hunt. A proposal grants Secretary Hepler authority to issue authorizations to hunt without going through the licensing process. It was noted there would not be a restriction on the

number of license and they would not be part of the license pools. Requirements and Restrictions would be as follows:

1. The Secretary may authorize a resident who has been diagnosed by a licensed doctor of medicine to have a terminal illness which is medically expected to significantly shorten their life expectancy to hunt deer, antelope, and turkey.
2. A resident the age of 25 and under diagnosed by a licensed doctor with cancer, a life-threatening illness, or a disease that significantly shortens their life expectancy is eligible for authorization.
3. The person receiving such authorization would be allowed to hunt only during established seasons.
4. The person would be authorized to take no more than one deer, one antelope, one turkey.
5. Certain restrictions may be waived or additional terms or conditions may be imposed necessary to facilitate participation for the person receiving such authorization.

Motioned by Cooper with second by G. Jensen TO APPROVE THE PROPOSAL AUTHORIZING TERMINALLY ILL PERSONS TO HUNT. Motion carried unanimously.

A draft administrative rule will be provided to the Commission with the finalization.

Public Hearing

The Public Hearing began at 2:00 p.m. and concluded at 2:05 p.m. and the minutes follow these minutes.

FINALIZATIONS

License Request Process

Petersen presented the proposed change to add permissive language to the rule authorizing the department to sell license lists to repeat applicants under certain circumstances. This streamline process allow the department to sell a license list to an applicant without seeking commission approval if the commission has previously approved a license list request from the same applicant for a similar purpose. License lists received from new applicants or for new uses would continue to be presented to the Commission for approval.

Peterson noted that Administration staff follow up each month on each license list request informing denial or providing approved lists.

Motioned by Petersen with second by Spies TO APPROVE THE ADDITION OF PERMISSIVE LANGUAGE TO THE RULE AUTHORIZING THE DEPARTMENT TO SELL LICENSE LISTS TO REPEAT APPLICANTS UNDER CERTAIN CIRCUMSTANCES. Motion carried unanimously.

OPEN FORUM

The Outdoors Adventures Foundation Directors Verne Boer and Alan Machmiller provided a presentation and overview of their program. Boer explained the mission of their foundation to provide hunting and fishing adventures for children and young and adults with cancer or other life threatening illnesses. In addition they also provide hunting and fishing adventures for combat disabled veterans under the age of 40 that are wheelchair bound caused by injury during active services or who have lost a limb during active services. In 2015 over 16 adventures fulfilled and 20 are currently planned for 2016.

Boer recently contacted GPF to address the issue concerning the inability to obtain hunting licenses for the children before it was too late.

Matt Rippentrop was present on behalf of the Wild Sheep Foundations Midwest Chapter to thank the Commission for moving forward on the issuance of the auction tag. Rippentrop also recognized the importance of the Bighorn Sheep study and provided an update on their current projects.

DIVISION OF PARKS AND RECREATION

Town of Oacoma – Convention Center Lease Amendment

Sean Blanchette, concessions manager provided an amendment to the lease with the City of Oacoma in regards to the convention center attached to Cedar Shore Resort which subleases the operations. This an extension to the 2004 agreement that would allow Oacoma to retain rental fee to be utilized for road and facility maintenance.

Motioned by B. Jensen, seconded by G. Jensen TO ADOPT THE AMENDED LANGUAGE ON THE CEDAR SHORE LEASE (Appendix A) WITH THE CITY OF OACOMA. Motion carried.

Custer State Park Resort Company 2015 R&M Fund Summary

Snyder provided a brief summary of 2015 Repair and Maintenance projects. Josh Schmaltz, resort manager indicated they completed the year with \$150,000 overrun and plan to be even by 2018. He also summarized the major projects noting renovations to dorms and cabins at Legion and Sylvan Lakes' as well as the removal of the old boat house.

Custer State Park Buffalo Auction Results

Matt Snyder, regional supervisor and Gary Brundige, resource management specialist provided results from the 50th Custer State Park buffalo auction. The auction had 43 bidders, 16 buyers from 11 states with total sales over \$344,000. Sold about 40 fewer animals this year

It was noted next year will be an online video auction to bring everyone up to the new visitor's center. It will still a live animal auction just viewed offsite and is a lot less

stress on the animals. A sale catalog will be provided as with most sales and buyers can still see the animal prior to purchase if wanted.

Custer State Park Resource Management Plan Overview

Snyder and Brundige provided a powerpoint outlining the Custer State Park Resource Management Plan Overview. Brundige explained that the plan encompasses Peter Norbeck vision to protect and manage natural resource base while making the park available to the visiting public and promoting public use. He noted that the agency comment period has recently concluded and once those comments have been incorporated it will be open for public comments.

Revenue, Camping and Visitation reports

Acting Director Bob Schneider provided the year to date comparison of parks revenue noting it has been a great year. Schneider stated visitation was up 4 percent, camping 9 percent and revenue 11 percent. He noted outdoor recreation has shifted due to season and that a lot of the parks are open for hunting and serve as basecamps for hunters.

DIVISION OF WILDLIFE

Franzen Addition to Hedman GPA – Day County

Paul Coughlin, program administrator provided the current land acquisition and disposal report to the Commission.

The Franzen property is 400 acres located in Day County and would be utilized as an addition to the Hedman game production area. Purchase price is determined by an appraisal by an independent contactor certified to appraise at the federal standards.

Motion by G. Jensen with second by Dennert TO ADOPT RESOLUTION 15-20 (Appendix B).

Roll call vote: Dennert-yes; B. Jensen-yes; G. Jensen-yes; Petersen-yes; Phillips-yes; Spies-No; Cooper-yes. Motion passes with 6 yes and 1 no

Discussion continues on how to balance out acquiring new land while maintaining the property the agency currently owns.

Peterson was contacted by Franzen and they are very excited to provide this opportunity.

Bighorn Sheep Auction License

Tom Kirschenmann presented the Commission with the application received from the Wild Sheep Foundation – Midwest Chapter for an auction license noting all received for the past four years have been successful.

Motioned by Spies with second by B. Jensen TO APPROVE THE REQUEST FROM THE WILD SHEEP FOUNDATION – MIDWEST CHAPTER TO OBTAIN AN BIG

HORN SHEEP LICENSE TO BE AUCTIONED OFF. Motion carried unanimously.

Land acquisition projects

Coughlin provided information on the DOT – Big Sioux River Water Access Area located in Moody County. It is 3.5 acres of land has been advertised and will be brought before the Commission for final action at the January 2016 meeting.

Land acquisition guidance document update

Coughlin explained the priorities and guidelines process document sets out priorities into three categories: add to an existing GPA or water, points of access to public waters, and anything else that may be of significance. He will be updating the document to better identify the priorities for the agency in regards to land management to confirm if it is meeting the Department's needs, does the Department have the resources to manage at the level we would like to manage at, and does this meet the strategies/objectives of hunter access and management plans.

Bighorn Sheep Population Update

Chad Lehman, senior biologist and John Kanta, program specialist provided a powerpoint presentation on the Big Horn Sheep population noting the 6 herds established within the state. Information gathered such as harvest success by size and quality, population dynamics surveys and research is used to formulate a recommendation was presented.

Season Setting Schedule

Kirschenmann provided the 2016 season setting schedule. The current schedule shows the trend to move to a multiyear schedule unless something significant would arise. Kirschenmann indicated a few key points as follows: the waterfowl season will be determined earlier in the year in accordance to federal framework, the elk season aerial survey will be completed this winter and a full report will be provide with recommendations in March, and May will be deer season will be annual until the completion of the management plan.

EHD Disease Update

Kirschenmann provided a brief summary on EHD. He indicated we have incidents each year some areas more frequently due to drought. It was noted the spike in 2012 which are from reports received from hunters and landowners helped us gage incidents. This year a pocket of 127 reports were received by landowners in Sully County. The Department was able to submit samples to verify EHD in Pennington and Sully Counties predominately affecting whitetail deer.

The western portion of Sully county opportunity was offered a refund. 122 total licenses equating to 211 tags returned reinstatement of preference points.

Stakeholder Opinion Database Update and Demo

Kirschenmann explained how the process works to obtain information from the landowners and develop recommendations at the local level.

Nathan Baker, program specialist provided a brief demonstration to the group indicating this is another tool used to compile data. Commissioner Phillips assisted Baker with the demonstration of the data gathering process and reporting system.

Chelsea Krause, staff specialist showed how reports can be compiled per specific criteria such as county, species, etc. Staff can then use this data along with biological data to make the appropriate management approach.

I-90 Road Check Report

Andy Alban provide information on the I-90 road check that was held in conjunction with west river deer season, pheasant season and big game seasons in western states. He indicated this was a coordinated effort among states, federal officers, law enforcement and refuse officers, Aurora County sheriff and deputy, and Highway patrol. Alban further explained road checks done every year, but not to this magnitude since 2003 near Vivian. It was cancelled two previous years due to weather and extreme cold for the safety and wellbeing of public and staff. Over 33,000 vehicles went through the check 20 percent had game or fish on board. Over 12,000 licenses were checked approximately 700 were resident and 500 nonresident. There were 140 violations total of which 64 percent were big game, 22 percent small 14 percent other.

AIS Update

Mike Smith, senior biologist provided a power point and brief update on AIS in regards to the status of the zebra mussel issue at Lewis and Clark. They have seen some range expansion down stream, but none have been found above the delta. Boat check efforts continue on both sides of the river with assistance from the National Parks Services. Further collaborative efforts continue with multiple agencies with emphasis on outreach and watercraft inspection and decontamination to increase compliance stopping the spread of zebra mussels.

Employee Public Service Award

Leif presented District Conservation Officer Supervisor Mark Ohm the employee public service award for exemplary public service both on and off the job.

License sales report

Simpson provided the licensed sales report at of December 8 indicating fishing and nonresident small game license sales were slightly up from 2014.

Motioned by Cooper with second by Spies TO ADJOURN THE MEETING.
Motion carried unanimously and the meeting adjourned at 10:00am

**OACOMA LEASE (CEDAR SHORES) CONVENTION CENTER
FIRST AMENDMENT TO LEASE
FOR PARK AND RECREATION PURPOSES
TOWN OF OACOMA
ON LAKE FRANCIS CASE**

THIS FIRST AMENDMENT TO LEASE is entered in to on _____, 2015, by and between the South Dakota Department of Game, Fish and Parks ("State") and the Town of Oacoma ("Town").

WHEREAS, the State and Town entered a lease on January 8, 2004, to facilitate Town's construction of a Convention Center adjacent to Cedar Shore Resort; and

WHEREAS, The Town has subleased the operation of the Convention Center to the Resort and assessed the annual rental payment required by the lease; and

WHEREAS, pursuant to the terms of the lease the required annual rental payment is retained by Town to service its indebtedness for bond funds utilized for the construction of the convention center only until such time the indebtedness is fully satisfied, at which time the required annual rental fee shall become payable to State; and,

WHEREAS, the Town has further accepted responsibility to provide annual routine maintenance to the Convention Center and Resort entrance road;

WHEREAS, the Town desires and the State is agreeable to allow Town to retain all future rental payments for the remainder of the Lease term for Town's utilization towards performing annual routine maintenance to the entrance road, parking lot, Convention Center and associated infrastructure.

NOW, THEREFORE, the LEASE FOR PARK AND RECREATION PURPOSES TOWN OF OACOMA ON LAKE FRANCIS CASE dated January 8, 2004, is hereby amended as follows:

1. Section 30 "RENTAL" is hereby deleted in its entirety
2. Except as modified by this FIRST AMENDMENT, all terms and conditions set forth in the LEASE FOR PARK AND RECREATION PURPOSES TOWN OF OACOMA ON LAKE FRANCIS CASE dated January 8, 2004 shall remain in full force and effect.

END OF AGREEMENT TEXT

IN WITNESS WHEREOF, the parties hereto have hereunder subscribed their names this _____
day of _____, 2015.

SOUTH DAKOTA DEPARTMENT OF GAME, FISH AND PARKS

Robert Schneider, Acting Director
Division of Parks and Recreation
(STATE)

CITY OF PIERRE

_____, President
Oacoma Town Board of Trustees
(TOWN)

Appendix B

RESOLUTION 15 - 20

WHEREAS, the Department of Game, Fish, and Parks (GFP) has expressed an interest in acquiring real property presently owned by the Nathan and Michelle Franzen Revocable Trust dated April 22, 2014, 174 Oak Hills Drive, Yankton, SD 57078, which property is described as:

Northeast Quarter (NE $\frac{1}{4}$) of Section Ten (10); and the North Half of the Northwest Quarter (N $\frac{1}{2}$ NW $\frac{1}{4}$), the Southwest Quarter of the Northwest Quarter (SW $\frac{1}{4}$ NW $\frac{1}{4}$), the North Half of the Southwest Quarter (N $\frac{1}{2}$ SW $\frac{1}{4}$), and the Southeast Quarter of the Southwest Quarter (SE $\frac{1}{4}$ SW $\frac{1}{4}$) of Section Eleven (11), all in Township One Hundred Twenty-four (124) North, Range Fifty-seven (57) West of the 5th P.M., Day County, SD, containing 400 acres, more or less, and hereafter referred to as FRANZEN PROPERTY; and

WHEREAS, said property is to be acquired by and utilized by GFP as a Game Production Area; and

WHEREAS, SDCL 41-4-1.1 requires that before GFP acquires and purchases property, GFP must notify owners of land located adjacent to the property sought to be acquired by publishing notice of the same once in each legal newspaper of the county in which the property to be purchased is located; and

WHEREAS, GFP has published the required legal notice at least thirty (30) days prior to the date of action by the Commission authorizing the intended purchases, which notice included the time and location of the meeting at which Commission action is expected and by giving notice of instructions for presenting oral and written comments to the Commission; and

WHEREAS, the Commission has reviewed any and all comments that may have been received relative to the intended purchase and after consideration of the same, the Commission approves the purchase of said property for use as a Game Production Area;

NOW, THEREFORE, BE IT RESOLVED, that GFP is authorized to complete negotiations for the purchase of the FRANZEN PROPERTY and execute and consummate an agreement with Nathan E. Franzen and Michelle D. Franzen, as Trustees of the Nathan and Michelle Franzen Revocable Trust dated April 22, 2014, which is acceptable to GFP to acquire by purchase, at the price of \$920,000.00, the FRANZEN PROPERTY for use as a Game Production Area.

Public Hearing Minutes of the Game, Fish and Parks Commission
December 10, 2015

The Public Hearing Officer Scott Simpson began the public hearing at 2:00 p.m. at the RedRossa in Pierre, South Dakota with Commissioners Cooper, Peterson, Jensen, Jensen, Phillips, Dennert, and Spies present. Simpson indicated written comments were provided to the Commissioners prior to this time and will be reflected in the Public Hearing Minutes. Simpson then invited the public to come forward with oral testimony.

License Request Process

No oral or written testimony was received

Deer Season

No oral testimony was received.

Written testimony:

Joe Henderson, Madison, SD, emailed," As we wind down another year of deer season I thought I would write and ask a few questions/give feedback.

I feel the correct steps are starting to be taken to begin upping the numbers of the deer herd here in South Dakota. Every hunter knows that the deer population has taken a hit in the past 5 years. Even though the number of bucks that I saw were down, I did see a high number of doe this year, compared to years past. This is a good thing to see. With that said, I wish we would do away with the late season antlerless season. During this time, accidental bucks are shot due to rack sheds and it is more pressure on deer during the cold months. If GFP really thinks it is needed, please just have it turn over right away after the last day of general season.

This year I had the opportunity to hunt another state. Cows on Walk in areas there were required to be off the land. – Why doesn't South Dakota do the same? There are many times I make a track to a public area only to show up and find 200 cows tromping all over the quarter. Farmers are getting money to put these acres aside for hunting – leaving the cows out there during season highly impacts hunting success on a cow occupied field and also puts the cows in danger.

Last thing – I do take the opportunity in purchasing a special buck tag from time to time. I have always wondered, why is hunting on public ground/creps/ etc. not allowed with a special buck tag? I wouldn't mind seeing that changed in upcoming years.

Thank you for your time.

Tom Jensen, Sioux Falls, SD, emailed," I am hoping that the state will consider amending special buck tags to allow hunters to also hunt on public or leased private grounds such as WIA / CREPS / ETC.

I enjoy the opportunity to purchase special buck tags and am fortunate enough to have some private land to hunt on. I am near a county line so it makes sense to purchase a special buck tag so that I may hunt more than one county as I so desire. However, successful programs such as CREPS and WIA have designated a lot of the land I hunt as off limits for a special buck tag because now they are open to the public. In the past this has prevented me from hunting the very land I put on the application for special buck because it was enrolled into CREPS after I applied! Great programs, but why not allow special buck tag holders to hunt public and/or state leased private land?

The tag is significantly higher priced and represents only a small fraction of allocated deer licenses. Eliminating public land use from the tag doesn't seriously impact or help control in any way what county is hunted. I cannot think of a single good reason why an east river special buck tag could not be a license to hunt private land you have permission for as well as any public access land.

Please let me know if this has been discussed and any potential issues this would cause etc.

Thank you very much!

The public Hearing concluded at 2:05 p.m.

Respectfully Submitted,

Kelly R. Hepler, Department Secretary

GAME, FISH & PARKS
523 East Capitol Avenue
Pierre, SD 57501-3182
Phone 605.773.4510
FAX 605.773.6245
john.sayler@state.sd.us

REQUEST FOR LISTS OF LICENSE HOLDERS

Type of List Requested Turkey both archery and shotgun for Lake and Miner County residents.

Number of licenses in list _____

Name of Person, Entity, or Organization requesting list:

Russell Olson Co-Chair Lake County Longbeards, NWTF

Address of Person, Entity, or Organization:

221 Lake Ridge Drive Wentworth SD 57075

Purpose for which list will be used:

To invite interested turkey hunters to our inaugural banquet on Feb 26th 2016 in Madison

The sale of lists by the Department of Game, Fish & Parks is authorized by SDCL 1-27-1 and ARSD 41:06:02:04, 05 and 06. The fee for a Game, Fish & Parks Commission approved exception is \$100, otherwise the fee is \$100 per thousand names or a minimum of \$100 whichever is greater.

Names will be provided on self-adhesive mailing labels unless otherwise specified. Unless requested and approved as part of this request, the license list will not include anyone under eighteen years of age. Names are for one-time use only and are to be used only by the person, entity or organization approved per this request.



1/6/16

Authorized Signature of Purchaser

Date

GAME, FISH AND PARKS COMMISSION ACTION PROPOSAL

Application for License and Paddlefish Licenses Chapter 41:06:01 AND 41:07

Commission Meeting Dates:	Proposal	January 14-15, 2016	Pierre
	Public Hearing	March 3, 2016	Pierre
	Finalization	March 3-4, 2016	Pierre

DEPARTMENT RECOMMENDATION

New Rules: Authorization for the Commission to establish allocation of restricted licenses and access permits for certain hunting seasons and paddlefish seasons by resolution.

If the number of hunting licenses and access permits available for allocation is restricted for deer, antelope, turkey, elk, mountain goat, bighorn sheep, mountain lion, bison, goose or swan hunting seasons, the Commission shall establish by resolution the number and type of each license available for lottery drawing.

The Commission shall establish the number and type of each archery and snagging paddlefish license available for lottery drawing by resolution.

Prior to adopting license allocation resolutions, public notice that conforms with notice requirements for adoption of administrative rules as provided in SDCL 1-26-4.1 shall be published.

SUPPORTIVE INFORMATION

As part of the guidance from the Governor's Administrative Rules Workgroup, the Department has identified another way to increase efficiency of the administrative rules process, yet maintain public notice and public comment opportunities. These new rules would allow the Commission to allocate restricted licenses and access permits for seasons described above by resolution. A major result of the approval process via resolution would reduce the overall pages of administrative rules by eliminating license types and numbers for each unit description within each specific rule.

APPROVE _____	MODIFY _____	REJECT _____	NO ACTION _____
---------------	--------------	--------------	-----------------

GAME, FISH AND PARKS COMMISSION ACTION PROPOSAL

7

Refuges Chapter 41:05:02

Commission Meeting Dates:	Proposal	January 14-15, 2016	Pierre
	Public Hearing	March 3, 2016	Pierre
	Finalization	March 3-4, 2016	Pierre

DEPARTMENT RECOMMENDATION

Recommended changes from last year:

1. Remove the Dry Creek State Waterfowl Refuge.

41:05:02:68. Missouri River refuges. Except as otherwise expressly provided herein, the Missouri River refuges described in subdivisions (1) to (12), inclusive, and (14) and (15), of this section are closed to all waterfowl hunting from the opening day of the earliest waterfowl season through the last day of the Canada goose season and are open to duck hunting after the last day of the Canada goose season. The Missouri River refuges described in subdivision (13) and subdivisions (16) to (22), inclusive, are closed to waterfowl hunting during all of the waterfowl seasons. The refuges, including all islands and bars within the refuges, are described as follows:

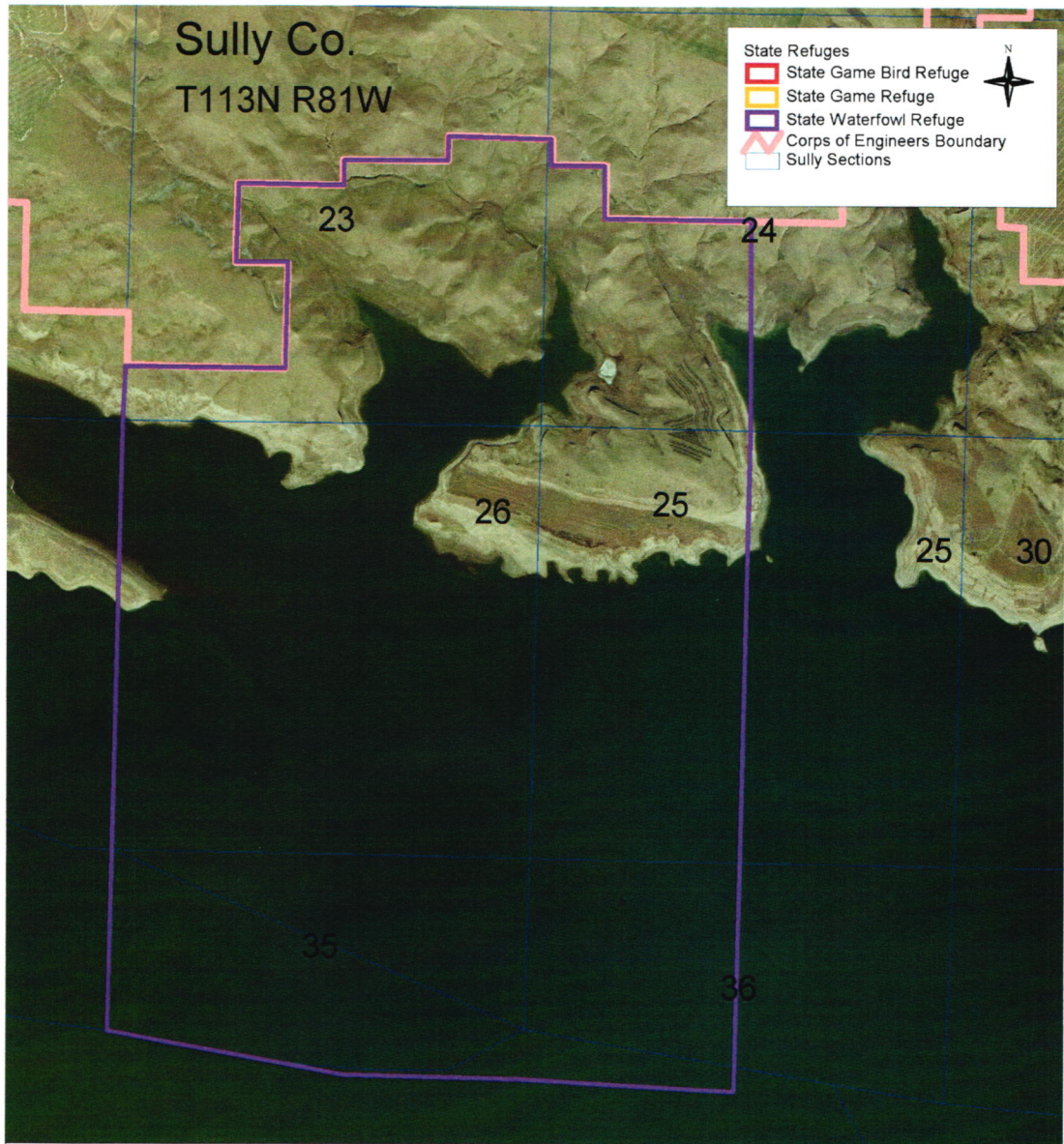
~~(9) — The Dry Creek State Waterfowl Refuge comprises an area on Lake Oahe enclosed by a line beginning at the Corps of Engineers take line on the west section line of section 23, township 113 north, range 81 west, Sully County; then northeasterly along the take line to the north-south one-half mile line of section 24, township 113 north, range 81 west, Sully County; then south along the one-half mile line to the center of the reservoir; then upstream along the center of the reservoir to a point straight south of the west section line of section 23, township 113 north, range 81 west, Sully County; then north along the section line to the point of beginning;~~

SUPPORTATIVE INFORMATION

Dry Creek State Waterfowl Refuge was implemented in 1999 as a contingency to the enrollment of the Mail Shack Creek/Zimmerman Walk-in/Lower Oahe Waterfowl Access Area. Additionally, when this refuge was implemented, the Sully Flats Waterfowl Refuge (just up river from the current Dry Creek State Waterfowl Refuge) was removed. The Zimmerman Walk-in/Lower Oahe Waterfowl Access Area land was removed from the access program in the fall of 2015 at the request of the landowner. Therefore, the Department is recommending the removal of this refuge status for waterfowl hunting opportunity.

APPROVE _____	MODIFY _____	REJECT _____	NO ACTION _____
---------------	--------------	--------------	-----------------

Dry Creek State Waterfowl Refuge



41:05:02:68 (9). The Dry Creek State Waterfowl Refuge comprises an area on Lake Oahe enclosed by a line beginning on the Corps of Engineers take line on the west section line of section 23, township 113 north, range 81 west, Sully County; then northeasterly along the take line to the north-south one-half mile line of section 24, township 113 north, range 81 west, Sully County; then south along the one-half mile line to the center of the reservoir; then upstream along the center of the reservoir to a point straight south of the west section line of section 23, township 113 north, range 81 west, Sully County; then north along the section line to the point of beginning.

Dry Creek State Waterfowl Refuge

APPROVE _____ MODIFY _____ REJECT _____ NO ACTION _____

GAME, FISH AND PARKS COMMISSION ACTION FINALIZATION

Application for License Chapter 41:06:01

Commission Meeting Dates:	Proposal	December 10-11, 2015	Pierre
	Public Hearing	January 14, 2016	Pierre
	Finalization	January 14-15, 2016	Pierre

COMMISSION PROPOSAL

New Rule: Authorization for terminally ill residents to hunt deer, antelope, and turkey.

41:06:01:18. Authorization for terminally ill residents to hunt deer, antelope and turkeys. The secretary may authorize a resident who has been diagnosed by a licensed doctor of medicine to have a terminal illness that to a reasonable medical certainty is expected to substantially shorten the resident's life expectancy to hunt deer, antelope or turkey during established hunting seasons. A resident under the age of twenty-six who has been diagnosed by a licensed doctor of medicine to have cancer or other life-threatening illness is eligible to receive such authorization. An authorization to hunt issued pursuant to this section shall allow the resident to take no more than one deer, one antelope and one turkey and shall be issued on a once-in-a-lifetime basis for each species for which an authorization is requested. The secretary may waive certain restrictions related to the hunting season or impose additional terms and conditions as necessary to facilitate participation by the resident.

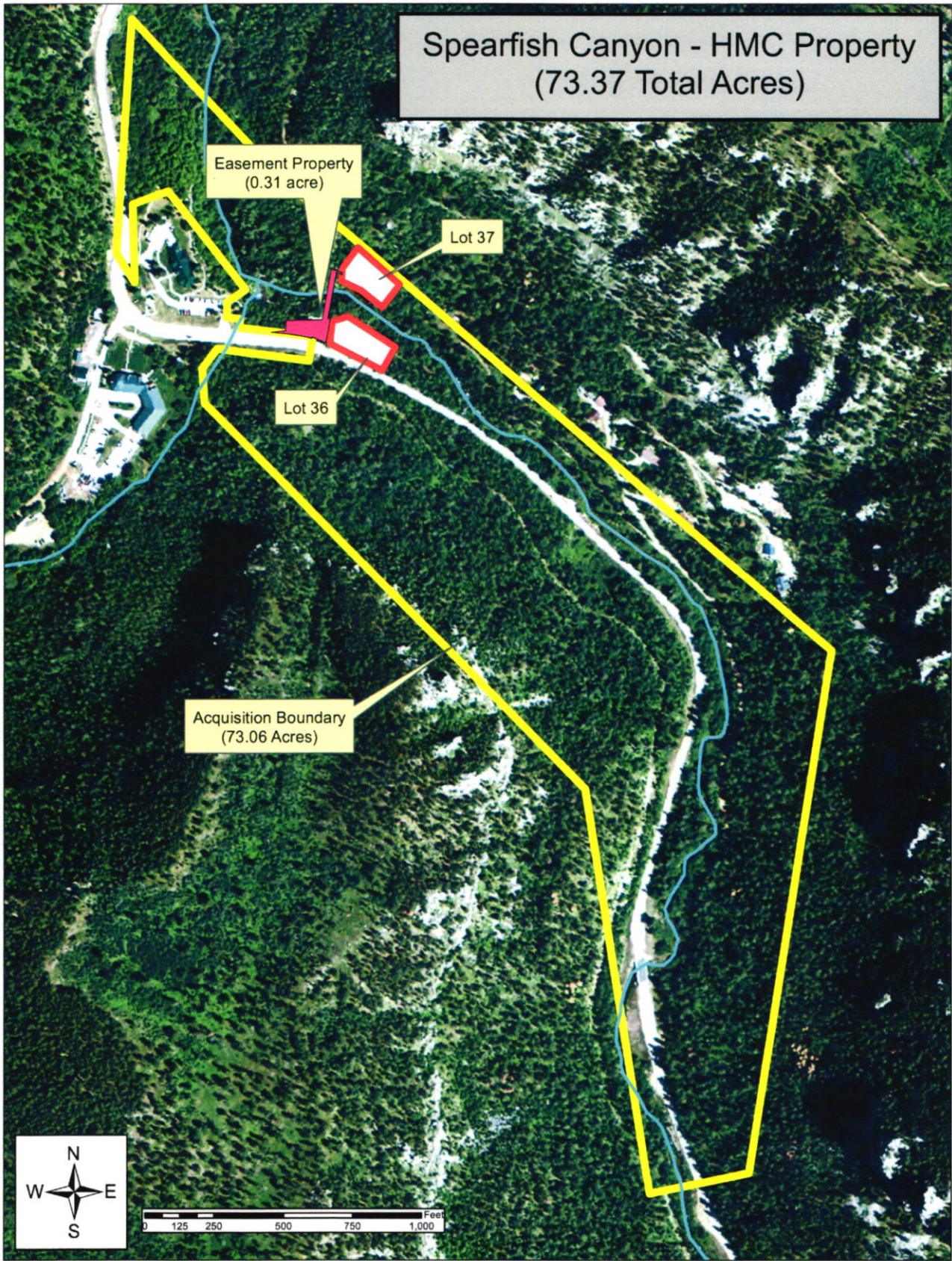
DEPARTMENT RECOMMENDATION

Recommended changes from proposal: None.

SUPPORTIVE INFORMATION

The Department has been approached about the concept of providing hunting opportunities to residents that have been diagnosed with a terminal illness. The department recommends an authorization process whereby the Secretary of Game, Fish and Parks has the ability to grant such opportunities. The authorization would address requests based on each individual's circumstances within the guidelines provided in the new administrative rule.

APPROVE _____	MODIFY _____	REJECT _____	NO ACTION _____
---------------	--------------	--------------	-----------------



9a

**SECOND AMENDMENT TO
AGREEMENT FOR PURCHASE OF LANDS**

THIS SECOND AMENDMENT TO AGREEMENT FOR PURCHASE OF LANDS ("Second Amendment") is made and entered into effective the _____ day of December, 2015, by and among **HOMESTAKE MINING COMPANY OF CALIFORNIA** ("Homestake"), 11457 Bobtail Gulch Road, Central City, SD 57754, **STATE OF SOUTH DAKOTA, DEPARTMENT OF GAME, FISH AND PARKS** ("Department"), 523 E. Capital Avenue, Pierre, SD 57501, and **SPEARFISH CANYON FOUNDATION, INC.** ("Foundation"), 1115 North 3rd Street, Spearfish, SD 57783. The foregoing entities may be referred to hereinafter individually as a "Party" and collectively as the "Parties."

RECITALS

1. By an Agreement for the Purchase of Lands dated October 27, 2014 ("Agreement"), Homestake agreed to sell and the Department agreed to purchase the following-described real estate located in Lawrence County, South Dakota:

HYDRO #2 TRACT:

HMC Lot 2A, being a portion of Spearfish Placer, M.S. 439, located in the NE $\frac{1}{4}$ of Section 17, Township 5 North, Range 2 East, as shown on Plat Document No. 2014-3631 and comprising 32.251 acres, more or less, and

SPEARFISH FALLS TRACTS:

Lot Ab-2, being a portion of Cascade Placer, M.S. 991, located in the NW $\frac{1}{4}$ of Section 31, Township 5 North, Range 2 East, as shown on Plat Document No. 1998-4970 and comprising 0.28 acres, more or less, and

Lot F-2, being a portion of Little Spearfish Placer, M.S. 953, located in the NE $\frac{1}{4}$ of Section 36, Township 5 North, Range 1 East, as shown on Plat Document No. 2001-6172 and comprising 0.02 acres, more or less, and

HMC Lot 2, being a portion of the Cascade Placer, M.S. 991, located in the NE¼ of Section 36, Township 5 North, Range 1 East and the NW¼ of Section 31, Township 5 North, Range 2 East, as shown on Plat Document No. 1991-1769 and comprising 6.61 acres, more or less, and

Montana Placer, M.S. 991, excluding Spearfish Canyon Lots 36 and 37, as shown on Plat Document No. 90-5436 and excluding Highway Right-of-Way, located in the W½ of Section 31, Township 5 North, Range 2 East and the NE¼ of Section 6, Township 4 North, Range 2 East.

2. The Parties amended the Agreement by an Amendment to Agreement for Purchase of Lands dated December 18, 2014 (“First Amendment”). The First Amendment authorized separate closings on the Hydro #2 Tract and the Spearfish Falls Tracts. The First Amendment delays closing on the Spearfish Falls Tracts to a date and place to be mutually agreed upon by the Parties once the litigation entitled *Kathy Romano, Chris Romano, and Debra Jilka v. Homestake Mining Company of California, Spearfish Canyon Foundation, and Jerry J. Boyer*, Lawrence County, South Dakota, Fourth Judicial Circuit, Case No. 40CIV14-000377 (“Lawrence County litigation”) has been resolved.

3. Closing on the Hydro #2 Tract occurred December 18, 2014.

4. The Parties now desire to close on the Spearfish Falls Tracts, except for that portion of the Spearfish Falls Tracts directly impacted by the Lawrence County litigation (the “portion impacted by the Lawrence County litigation”). Closing on the portion impacted by the Lawrence County litigation will be delayed until after final resolution of the Lawrence County litigation.

NOW, THEREFORE, in consideration of the foregoing and the mutual covenants contained herein, the Parties agree as follows:

5. **Surveying and Platting**: Homestake will cause the Montana Placer of M.S. 991 of the Spearfish Falls Tracts to be surveyed and platted so that the

portion impacted by the Lawrence County litigation will be a tract ("Tract 3") separate from the remainder of the Montana Placer of M.S. 991 and the other Spearfish Falls Tracts ("Tracts 1 and 2").

6. **Closing on Tracts 1 and 2:** Closing on Tracts 1 and 2 will occur as soon as is conveniently possible after they have been surveyed and platted, and the title insurance commitment on them has been issued and approved.

7. **Purchase Price for Tracts 1 and 2:** The purchase price for Tracts 1 and 2 shall be \$750,000 to be paid by Foundation to Homestake in full at closing.

8. **Closing on Tract 3:** Closing on Tract 3 will not occur until after final resolution of the Lawrence County litigation. Homestake will give written notice of the final resolution of the Lawrence County litigation to Department at Department's address as set forth on the first page of this Second Amendment. Homestake will then order the title insurance commitment for Tract 3, and closing on Tract 3 will occur as soon as is conveniently possible after the plat has been finally approved, and the title insurance commitment has been issued and approved.

9. **Purchase Price for Tract 3:** The purchase price for Tract 3 shall be \$50,000 to be paid in full to Homestake at closing in a manner to be mutually agreed upon by Foundation and Department.

10. **Indemnification and Hold Harmless:** Homestake indemnifies and holds Department harmless from any liability arising out of the Lawrence County litigation and agrees it will be responsible for removing any liens or encumbrances which may attach to Tracts 1, 2 and 3 as a result of such litigation.

11. **Ratification:** Except as amended in this Second Amendment, the Agreement and the First Amendment are ratified and confirmed.

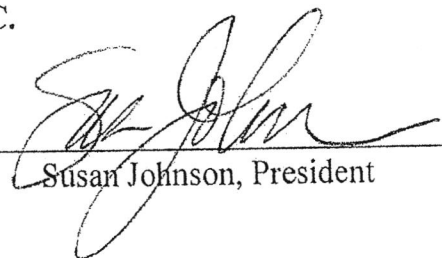
12. **Counterparts:** This Second Amendment may be executed in any number of counterparts, each of which shall be deemed an original and all of which together shall be considered one and the same document.

IN WITNESS WHEREOF, the parties have hereunto signed this Second Amendment to Agreement for Purchase of Lands with the understanding that this Second Amendment cannot be consummated by the Department until after the Game, Fish and Parks Commission has considered and authorized same. In the event the Game, Fish and Parks Commission does not authorize the Department's execution of the Second Amendment, this Second Amendment shall be null and void and each party shall be relieved of all obligations hereunder.

**HOMESTAKE MINING COMPANY
OF CALIFORNIA, INC.**

**SPEARFISH CANYON FOUNDATION,
INC.**

By _____

By  _____
Susan Johnson, President

Printed Name

Its _____
Name of Office

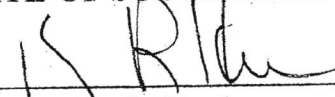
By _____

Printed Name

Its _____

The Secretary of the South Dakota Department of Game, Fish and Parks has executed this Second Amendment on behalf of the State of South Dakota on this 30th day of December, 2015.

STATE OF SOUTH DAKOTA, DEPARTMENT OF GAME, FISH AND PARKS

By  _____

Kelly R. Hepler
Its Secretary

STATE OF _____)
) ss.
COUNTY OF _____)

On this the _____ day of _____, 2015, before me, the undersigned officer, personally appeared _____ and _____, who acknowledged themselves to be officers of **HOMESTAKE MINING COMPANY OF CALIFORNIA**, a California corporation, and that they, as such officers, are authorized to execute the foregoing instrument for the purposes therein contained, by signing the name of the corporation by themselves as its _____ and _____

IN WITNESS WHEREOF, I hereunto set my hand and official seal.

(SEAL)

Notary Public
My Comm. Expires: _____

STATE OF South Dakota)
) ss.
COUNTY OF Lawrence)

On this the 23rd day of December, 2015, before me, the undersigned officer, personally appeared **Susan Johnson**, known to me to be the President of **SPEARFISH CANYON FOUNDATION, INC.**, and that she, as such President, is authorized to execute the foregoing instrument for the purposes therein contained, by signing the name of the corporation by herself as such President.

IN WITNESS WHEREOF, I hereunto set my hand and official seal.

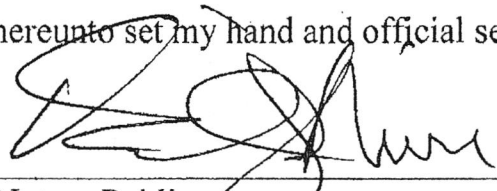
(SEAL)

Deanna M. Avey
Notary Public
My Comm. Expires: 7/13/17

STATE OF South Dakota)
) ss.
COUNTY OF Hughes)

On this the 30th day of December, 2015, before me, the undersigned officer, personally appeared **Kelly R. Hepler**, who acknowledged himself to be the Secretary of the **SOUTH DAKOTA DEPARTMENT OF GAME, FISH AND PARKS**, and that he, in said capacity and being authorized so to do, executed the foregoing instrument for the purposes therein contained.

IN WITNESS WHEREOF, I hereunto set my hand and official seal.



(SEAL)

Notary Public
My Comm. Expires: June 5, 2016

Richard J. Neill
Notary Public
State of South Dakota
Commission Expires 6/5/16

RESOLUTION 16 - 01

WHEREAS, at its regular meeting held on December 11-12, 2014, the Game, Fish and Parks Commission approved the Department's acquisition of the SPEARFISH FALLS TRACTS from Homestake Mining Company of California, which property is described as follows:

SPEARFISH FALLS TRACTS

Lot Ab-2, being a portion of Cascade Placer, M.S. 991, located in the NW/4 of Section 31, Township 5 North, Range 2 East, as shown on Plat Document No. 1998-4970 and comprising 0.28 acres, more or less, and

Lot F-2, being a portion of Little Spearfish Placer, M.S. 953, located in the NE/4 of Section 36, Township 5 North, Range 1 East, as shown on Plat Document No. 2001-6172 and comprising 0.02 acres, more or less, and

HMC Lot 2, being a portion of the Cascade Placer, M.S. 991, located in the NE/4 of Section 36, Township 5 North, Range 1 East and the NW/4 of Section 31, Township 5 North, Range 2 East, as shown on Plat Document No. 1991-1769 and comprising 6.61 acres, more or less, and

Montana Placer, M.S. 991, excluding Spearfish Canyon Lots 36 and 37, as shown on Plat Document 90-5436 and excluding Highway Right-of-Way, located in the W/2 of Section 31, Township 5 North, Range 2 East and the NE/4 of Section 6, Township 4 North, Range 2 East; and

for the sum of \$800,000.00 to be donated by Spearfish Canyon Foundation, Inc. for use within the State Park system, provided the closing of the sale of the SPEARFISH FALLS TRACTS was to be finalized on a date and place to be mutually agreed upon by the parties, i.e., Homestake Mining Company of California, Spearfish Canyon Foundation, Inc. and South Dakota Department of Game, Fish and Parks, once the litigation entitled *Romano, et.al. v. Homestake Mining Company of California, et.al.*, currently pending in the Fourth Judicial Circuit, Lawrence County, South Dakota, ("Lawrence County litigation") had been resolved; and

WHEREAS, the parties now desire to close the purchase of the SPEARFISH FALLS TRACTS except for that portion of the SPEARFISH FALLS TRACTS directly impacted by the Lawrence County litigation (the "portion impacted by the Lawrence County litigation"), at a price of \$750,000.00 to be paid to Homestake Mining Company by the Spearfish Canyon Foundation, with the Department agreeing to purchase and close on the portion impacted by the Lawrence County litigation at a price of \$50,000.00 after the Lawrence County litigation has been finally resolved; and

WHEREAS, the Commission is satisfied that it is in the best interests of the public to proceed with closing the transaction in the manner being proposed by the parties;

NOW, THEREFORE, BE IT RESOLVED, that GFP is authorized to execute and consummate an amended purchase agreement with Spearfish Canyon Foundation, Inc. and Homestake Mining Company of California, which is acceptable to GFP to acquire the SPEARFISH FALLS TRACTS, except that portion thereof directly impacted by the Lawrence County litigation, at a price of \$750,000.00 to be paid by Spearfish Canyon Foundation for use within the State Park system and, in addition, to acquire the portion impacted by the Lawrence County litigation at a price of \$50,000.00 to be paid to Homestake Mining Company in a manner to be mutually agreed upon by the Department and Spearfish Canyon Foundation after the Lawrence County litigation has been finally resolved.

15a

January to December 2015 Revenue Comparison by Item

	2014		2015		% Change
	Number	Dollar	Number	Dollar	
Annual	45,714	\$ 1,371,412	48,108	\$ 1,443,254	5%
Second Vehicle	11,938	\$ 179,064	12,173	\$ 182,592	2%
Combo	24,020	\$ 1,080,901	25,816	\$ 1,161,728	7%
Transferable	1,590	\$ 103,320	1,493	\$ 97,072	-6%
Daily / Person	30,815	\$ 123,258	34,405	\$ 137,618	12%
Daily / Vehicle	76,247	\$ 457,479	85,770	\$ 514,621	12%
Unattended Vehicle Daily	1,331	\$ 13,308	1,845	\$ 18,448	39%
Motorcoach Permit	36,852	\$ 110,555	24,947	\$ 74,841	-32%
GSM Annual Trail Pass	2,505	\$ 37,575	3,282	\$ 49,230	31%
GSM Daily Trail Pass	17,003	\$ 51,009	17,818	\$ 53,454	5%
CSP Temp Daily / Vehicle	142,595	\$ 2,138,929	158,778	\$ 2,381,671	11%
Bike Band	18,872	\$ 188,721	29,334	\$ 293,338	55%
Rally Bike Band	31,457	\$ 314,570	54,579	\$ 545,786	74%
One-Day Special Event	N/A	\$ 11,725	N/A	\$ 10,745	-8%
PERMITS	440,937	\$ 6,181,826	498,348	\$ 6,964,397	13%
Camping Services Permits	-	\$ 7,476,592	-	\$ 8,156,390	9%
Gift Card	-	\$ 15,815	-	\$ 22,615	43%
Picnic Reservations	-	\$ 16,675	-	\$ 17,733	6%
Firewood	40,551	\$ 162,202	44,782	\$ 179,129	10%
LODGING	40,551	\$ 7,671,284	44,782	\$ 8,375,867	9%
TOTAL	481,487	\$ 13,853,110	543,130	\$ 15,340,265	11%

December 2015 YTD Revenue Comparison by District

LOCATION	2014	2015	%	LOCATION	2014	2015	%
Fort Sisseton	\$ 65,840	\$ 64,600	-2%	Lewis & Clark	\$ 1,408,320	\$ 1,500,560	7%
Roy Lake	\$ 198,301	\$ 214,351	8%	Springfield	\$ 25,764	\$ 26,391	2%
Sica Hollow	\$ 2,672	\$ 2,610	-2%	Chief White Crane	\$ 259,034	\$ 297,451	15%
DISTRICT 1	\$ 266,813	\$ 281,561	6%	Pierson Ranch	\$ 96,689	\$ 109,954	14%
Richmond Lake	\$ 80,834	\$ 80,577	0%	Tabor	\$ 1,530	\$ 1,047	-32%
Mina Lake	\$ 103,530	\$ 109,587	6%	Sand Creek	\$ 1,180	\$ 1,957	66%
Lake Louise	\$ 56,922	\$ 67,245	18%	DISTRICT 9	\$ 1,792,517	\$ 1,937,359	8%
Fisher Grove	\$ 20,847	\$ 21,517	3%	White Swan	\$ 2,998	\$ 2,809	-6%
Amsden	\$ 3,857	\$ 3,921	2%	South Scalp	\$ 1,015	\$ 1,185	17%
DISTRICT 2	\$ 265,990	\$ 282,846	6%	South Shore	\$ 3,527	\$ 5,178	47%
Sandy Shore	\$ 43,541	\$ 39,860	-8%	North Point	\$ 369,105	\$ 405,344	10%
Hartford Beach	\$ 148,323	\$ 157,977	7%	Pease Creek	\$ 27,085	\$ 26,824	-1%
Lake Cochrane	\$ 51,615	\$ 55,568	8%	Randall Creek	\$ 187,045	\$ 192,891	3%
Pelican Lake	\$ 130,272	\$ 150,366	15%	Whetstone	\$ 8,000	\$ 8,107	1%
Pickerel Lake	\$ 170,235	\$ 190,880	12%	North Wheeler	\$ 9,426	\$ 11,215	19%
DISTRICT 3	\$ 543,986	\$ 594,650	9%	DISTRICT 10	\$ 608,201	\$ 653,554	7%
Oakwood Lakes	\$ 253,558	\$ 299,443	18%	Farm Island	\$ 263,104	\$ 273,727	4%
Lake Poinsett	\$ 191,173	\$ 210,466	10%	West Bend	\$ 204,788	\$ 211,379	3%
Lake Thompsor	\$ 262,119	\$ 251,903	-4%	DISTRICT 11	\$ 467,892	\$ 485,106	4%
DISTRICT 4	\$ 706,850	\$ 761,812	8%	Okobojo	\$ 14,469	\$ 15,618	8%
Lake Herman	\$ 192,893	\$ 208,172	8%	Oahe Downstream	\$ 422,263	\$ 458,745	9%
Walkers Point	\$ 71,125	\$ 81,330	14%	Spring Creek	\$ 17,435	\$ 19,145	10%
DISTRICT 5	\$ 264,018	\$ 289,502	10%	Cow Creek	\$ 54,692	\$ 58,606	7%
Snake Creek	\$ 294,665	\$ 319,155	8%	DISTRICT 12	\$ 508,859	\$ 552,114	9%
Platte Creek	\$ 49,320	\$ 48,565	-2%	East Whitlock	\$ 756	\$ 894	18%
Burke Lake	\$ 2,071	\$ 2,221	7%	West Whitlock	\$ 149,526	\$ 165,920	11%
Buryanek	\$ 62,151	\$ 70,493	13%	Lake Hiddenwood	\$ 7,447	\$ 11,602	56%
DISTRICT 6	\$ 408,207	\$ 440,434	8%	Swan Creek	\$ 10,387	\$ 11,084	7%
Palisades	\$ 229,919	\$ 254,459	11%	Indian Creek	\$ 179,944	\$ 202,988	13%
Lake Vermillion	\$ 282,281	\$ 299,114	6%	West Pollock	\$ 19,750	\$ 18,640	-6%
Big Sioux	\$ 232,536	\$ 257,912	11%	WalthBay	\$ 941	\$ 1,702	81%
DISTRICT 7	\$ 744,736	\$ 811,484	9%	Revheim Bay	\$ 410	\$ 489	19%
Newton Hills	\$ 397,754	\$ 423,403	6%	DISTRICT 13	\$ 369,161	\$ 413,319	12%
Lake Alvin	\$ 30,087	\$ 40,561	35%	Mickelson Trail	\$ 109,630	\$ 126,701	16%
Union Grove	\$ 43,013	\$ 43,204	0%	Bear Butte	\$ 30,556	\$ 36,376	19%
Adams	\$ 491	\$ 1,282	161%	DISTRICT 14	\$ 140,186	\$ 163,077	16%
DISTRICT 8	\$ 471,345	\$ 508,449	8%	Shadehill	\$ 213,987	\$ 245,955	15%
				Llewellyn Johns	\$ 6,192	\$ 8,173	32%
				Rocky Point	\$ 147,813	\$ 180,123	22%
				DISTRICT 15	\$ 367,992	\$ 434,252	18%
				Custer	\$ 5,159,184	\$ 5,868,824	14%
				DISTRICT 16	\$ 5,159,184	\$ 5,868,824	14%
				Angostura	\$ 498,702	\$ 561,601	13%
				Sheps Canyon	\$ 54,369	\$ 61,801	14%
				DISTRICT 17	\$ 553,071	\$ 623,402	13%
				PIERRE OFFICE	\$ 214,099	\$ 238,520	11%
				TOTAL:	\$ 13,853,110	\$ 15,340,265	11%

15d

**DIVISION OF PARKS AND RECREATION
January to December 2015 Visitation Comparison**

Dist	Park	2014	2015	% Change	Dist	Park	2014	2015	% Change	
1	Fort Sisseton	43,404	63,865	47%	9	Lewis & Clark	858,471	911,122	6%	
	Roy Lake	109,893	103,648	-6%		Springfield	165,803	146,933	-11%	
	Sica Hollow	7,282	10,560	45%		Chief White Crane	106,607	86,899	-18%	
		<u>160,579</u>	<u>178,073</u>	<u>11%</u>		Pierson Ranch	72,979	65,454	-10%	
				<u>1,203,860</u>		<u>1,210,408</u>	<u>1%</u>			
2	Richmond Lake	44,905	40,719	-9%	10	North Point	149,876	136,407	-9%	
	Mina Lake	51,320	56,077	9%		North Wheeler	31,206	20,831	-33%	
	Lake Louise	34,428	32,566	-5%		Pease Creek	33,927	32,812	-3%	
	Fisher Grove	19,592	15,931	-19%		Randall Creek	52,952	53,781	2%	
	<u>150,245</u>	<u>145,293</u>	<u>-3%</u>	Ft. Randall Boat Club		16,585	20,432	23%		
				<u>284,546</u>		<u>264,263</u>	<u>-7%</u>			
3	Sandy Shore	23,881	21,782	-9%	11	Farm Island	181,291	183,920	1%	
	Hartford Beach	62,739	64,307	2%		West Bend	45,464	43,595	-4%	
	Lake Cochrane	14,965	12,857	-14%		LaFramboise Island	57,501	59,247	3%	
	Pelican South	28,986	29,102	0%		<u>284,256</u>	<u>286,762</u>	<u>1%</u>		
	Pickereel Lake	40,718	40,184	-1%						
	<u>171,289</u>	<u>168,232</u>	<u>-2%</u>							
4	Oakwood Lakes	61,180	73,975	21%	12	Oahe Downstream	370,459	389,009	5%	
	Lake Poinsett	64,207	58,155	-9%		Cow Creek	216,753	204,974	-5%	
	Lake Thompson	75,860	53,523	-29%		Okobojo Point	22,396	23,169	3%	
		<u>201,247</u>	<u>185,653</u>	<u>-8%</u>		Spring Creek	148,677	148,504	0%	
				<u>758,285</u>		<u>765,656</u>	<u>1%</u>			
5	Lake Herman	97,205	112,269	15%	13	West Whitlock	56,313	52,242	-7%	
	Walkers Point	41,366	40,387	-2%		Lake Hiddenwood	10,545	11,660	11%	
	<u>138,571</u>	<u>152,656</u>	<u>10%</u>	Swan Creek		20,497	24,101	18%		
6	Snake Creek	147,498	169,170	15%		Indian Creek	88,245	101,385	15%	
	Platte Creek	127,351	132,614	4%		Revheim Bay	29,021	30,034	3%	
	Burke Lake	20,469	18,418	-10%		West Pollock	27,155	29,126	7%	
	Buryanek	36,262	39,482	9%		<u>231,776</u>	<u>248,548</u>	<u>7%</u>		
	<u>331,580</u>	<u>359,684</u>	<u>8%</u>							
7	Palisades	66,920	75,542	13%		14	Bear Butte	35,810	25,426	-29%
	Lake Vermillion	121,247	119,450	-1%				<u>35,810</u>	<u>25,426</u>	<u>-29%</u>
	Big Sioux	53,574	57,471	7%	15	Shadehill	61,353	48,588	-21%	
	Beaver Creek	23,075	30,975	34%		Llewellyn Johns	6,903	5,463	-21%	
	<u>264,816</u>	<u>283,438</u>	<u>7%</u>	Little Moreau		9,751	11,210	15%		
				Rocky Point		68,866	83,786	22%		
				<u>146,873</u>	<u>149,047</u>	<u>1%</u>				
8	Newton Hills	119,207	125,901	6%	16	Custer	1,676,259	1,857,298	11%	
	Good Earth	26,438	31,382	19%			<u>1,676,259</u>	<u>1,857,298</u>	<u>11%</u>	
	Lake Alvin	35,305	40,491	15%	17	Angostura	175,786	189,821	8%	
	Union Grove	15,988	17,533	10%		Sheps Canyon	27,867	35,100	26%	
	Adams	41,395	34,044	-18%		<u>203,653</u>	<u>224,921</u>	<u>10%</u>		
	Spirit Mound	18,647	18,155	-3%						
	<u>256,980</u>	<u>267,506</u>	<u>4%</u>							
				TOTALS:	<u>6,500,625</u>	<u>6,772,864</u>	<u>4%</u>			

South Dakota Department of Game, Fish & Parks - Wildlife Division
Land Acquisition and Disposal Report
January 2016

Action Items

DOT - Big Sioux River Water Access Area

Location: Moody County

Description: 3.5 acres

Management Objective: Water Access Area

Cost: \$10,000.00

Expected Closing: January 2016

Requested Commission Action: Adopt RESOLUTION 16 – 02 authorizing and confirming the purchase

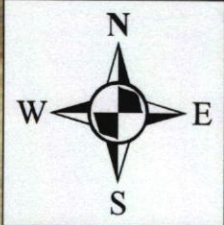
Information Items

None

Early Development Projects

None

DOT - BSR Water Access Area Moody County



479 AVE

SD HWY 32

32

Big Sioux River

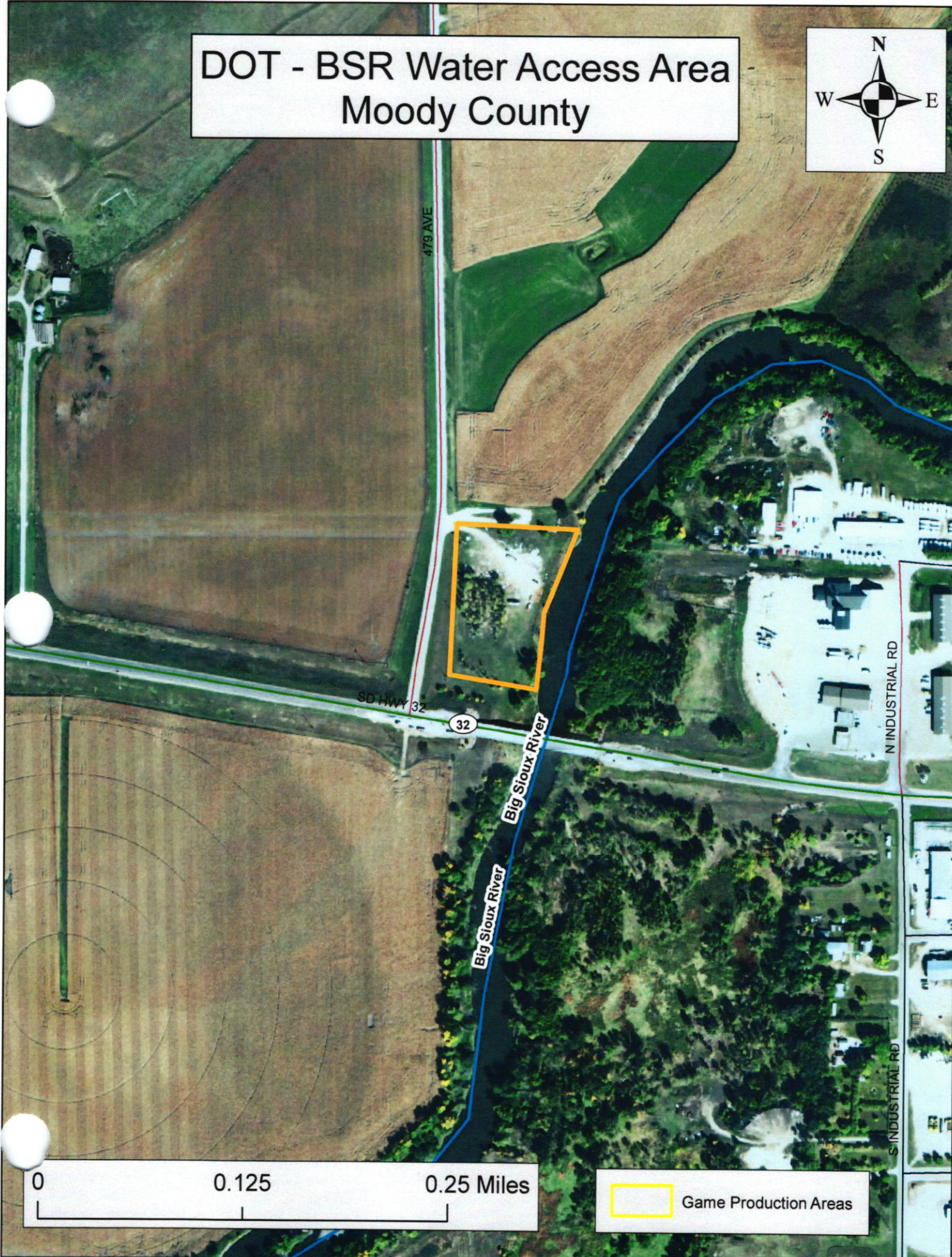
Big Sioux River

N INDUSTRIAL RD

S INDUSTRIAL RD

0 0.125 0.25 Miles

Game Production Areas



RESOLUTION 16 - 02

WHEREAS, the Department of Game, Fish, and Parks (GFP) has expressed an interest in acquiring real property presently owned by the State of South Dakota – Department of Transportation, 700 E. Broadway Ave., Pierre, SD 57501, which property is described as:

Lot X in Outlot B of the Northeast Quarter (NE¼) of Section Twenty-nine (29) in Township One Hundred Seven (107) North, Range Forty-eight (48) West of the 5th P.M., Moody County, SD, containing 3.5 acres, more or less, and hereafter referred to as DOT PROPERTY; and

WHEREAS, said property is to be acquired by and utilized by GFP as a Water Access Area; and

WHEREAS, SDCL 41-4-1.1 requires that before GFP acquires and purchases property, GFP must notify owners of land located adjacent to the property sought to be acquired by publishing notice of the same once in each legal newspaper of the county in which the property to be purchased is located; and

WHEREAS, GFP has published the required legal notice at least thirty (30) days prior to the date of action by the Commission authorizing the intended purchases, which notice included the time and location of the meeting at which Commission action is expected and by giving notice of instructions for presenting oral and written comments to the Commission; and

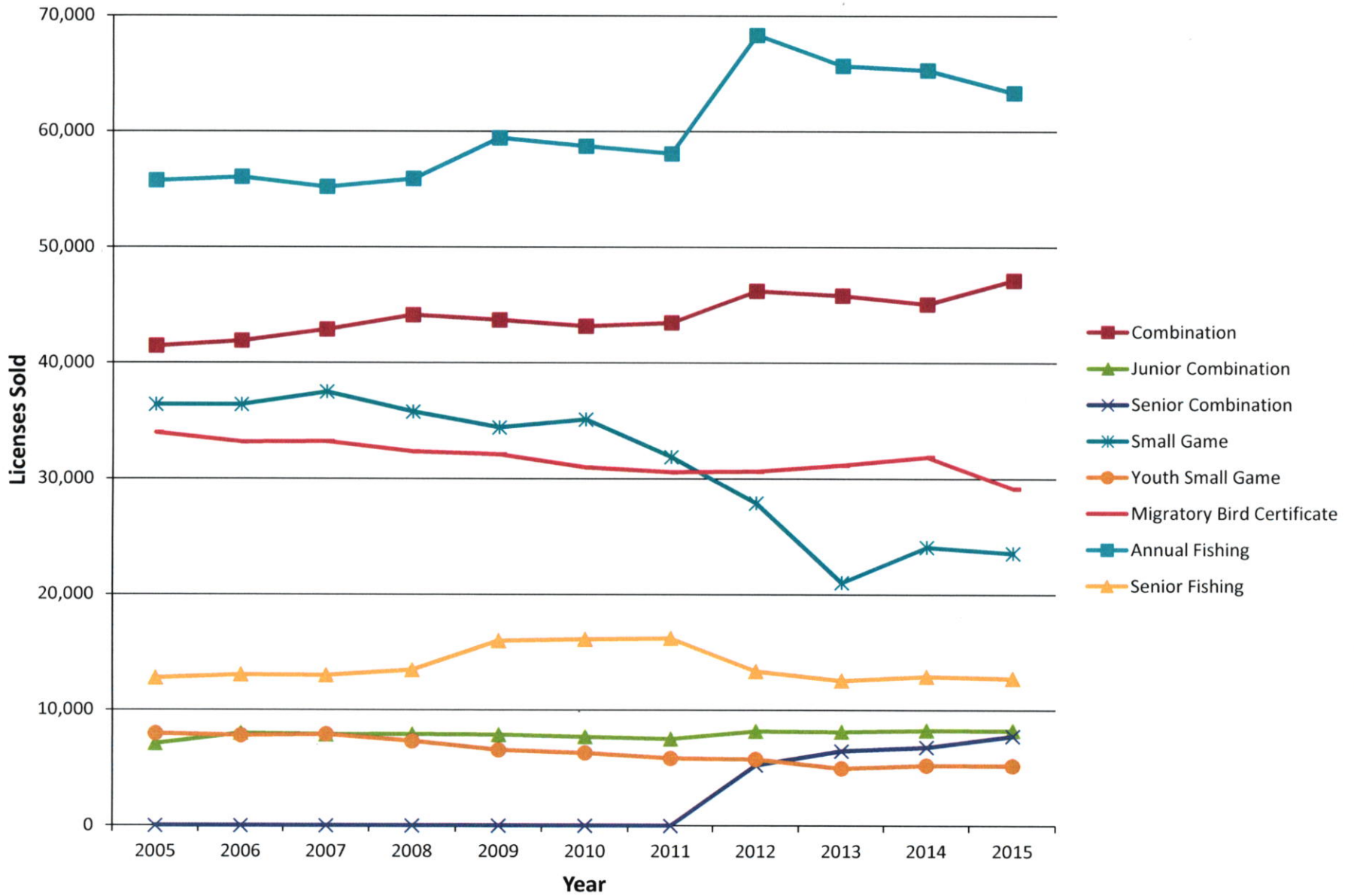
WHEREAS, the Commission has reviewed any and all comments that may have been received relative to the intended purchase and after consideration of the same, the Commission approves the purchase of said property for use as a Water Access Area;

NOW, THEREFORE, BE IT RESOLVED, that GFP is authorized to complete negotiations for the purchase of the DOT PROPERTY and execute and consummate an agreement with State of South Dakota – Department of Transportation, which is acceptable to GFP to acquire by purchase, at the price of \$10,000.00, the DOT PROPERTY for use as a Water Access Area.

2016 SEASONS/REGULATIONS & MGMT. PLAN UPDATES SCHEDULE

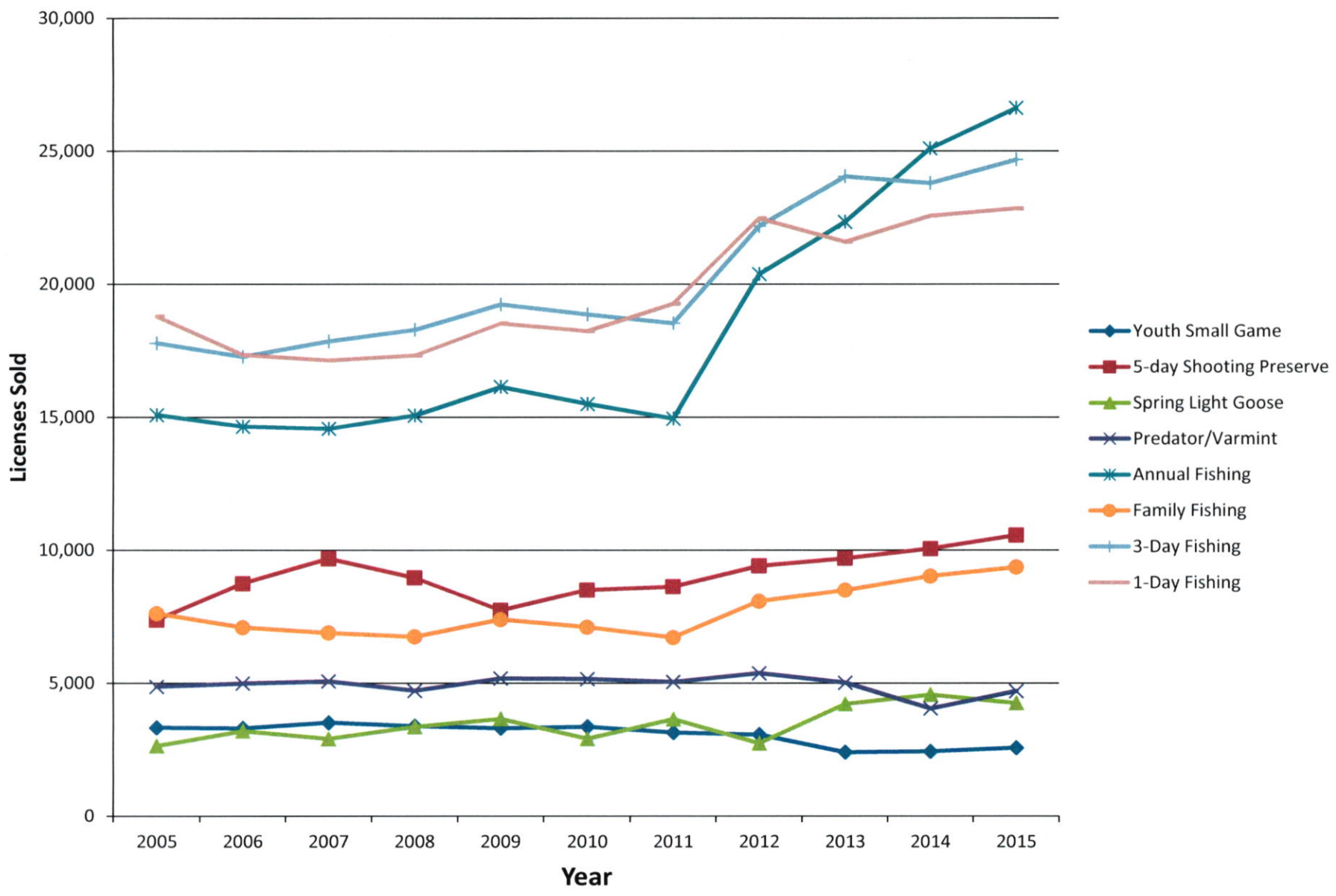
DATE	LOCATION	SEASON	MGMT. PLAN UPDATE
January 14-15	Pierre <i>RedRossa</i> <i>Convention Room</i>	Hunting Season Dates	
February		NO MEETING	
March 3-4	Pierre <i>RedRossa</i> <i>Convention Room</i>	CSP Bison CSP Elk (multiple seasons) Archery, Black Hills & Prairie Elk Waterfowl Hunting Seasons	Statewide Fisheries Plan Missouri River Fisheries Plan Elk Mgmt. Plan
April 7-8	Brookings <i>McCory Gardens</i>	NO PROPOSALS SCHEDULED	East River Fisheries Plan
May 5-6	CSP <i>Blue Bell Lodge</i>	CSP Deer East River Deer West River Deer Black Hills Deer Refuge Deer Archery Deer Muzzleloader Deer Youth Deer	Black Hills Fisheries Plans Deer Mgmt. Plan Progress Report
June 2-3	Watertown <i>Convention Center</i>	Fall Turkey	West River Fisheries Plan Sage Grouse Mgmt. Plan
July 7-8	Pierre <i>RedRossa</i> <i>Convention Room</i>	NO PROPOSALS SCHEDULED	Pronghorn Mgmt. Plan State Wildlife Action Plan
August 4-5	Pierre <i>RedRossa</i> <i>Convention Room</i>	Bobcat Fishing Regulations Bait Fish Private Fish Hatcheries Fish Importation	
September		NO MEETING	
October 6-7	Rapid City <i>Outdoor Campus</i> <i>West</i>	CSP Spring Turkey Spring & Archery Turkey	Mt. Lion Mgmt. Plan Deer Mgmt. Plan Progress Report
November 3-4	Brandon <i>Holiday Inn</i> <i>Express</i>	NO PROPOSALS SCHEDULED	
December 15-16	Pierre <i>RedRossa</i> <i>Convention Center</i>	NO PROPOSALS SCHEDULED	Bighorn Sheep Mgmt. Plan

Resident License Sales (2005-2015)



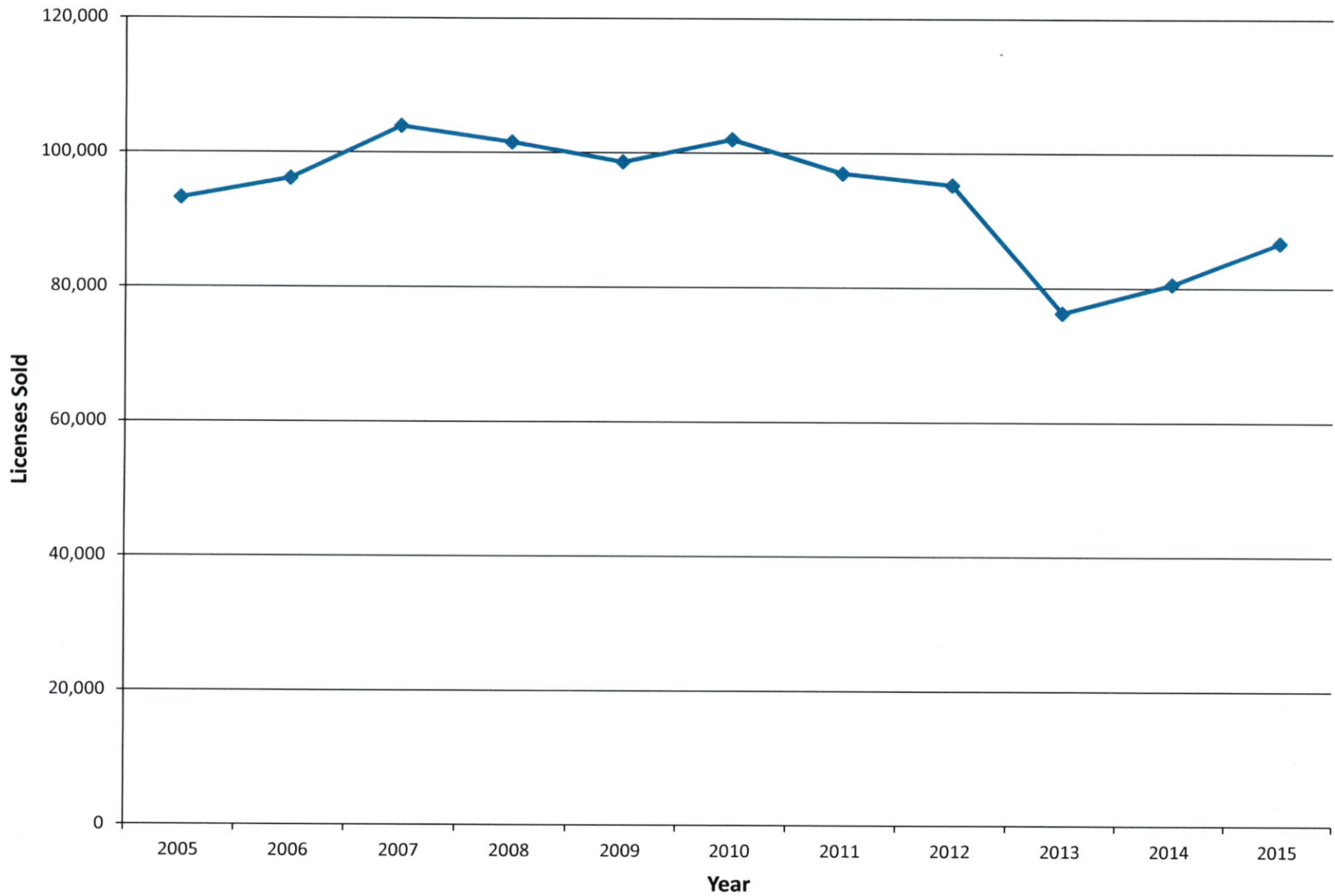
22

Non-Resident License Sales (2005-2015)



ace

Non-Resident Small Game License Sales (2005-2015)



200

License Sales Totals

(as of Jan 4, 2016)

Resident	2016	2015
Combination	1,616	1,598
Junior Combination	154	144
Senior Combination	378	334
Small Game	312	323
Youth Small Game	67	71
1-Day Small Game	194	167
Migratory Bird Certificate	739	753
Predator/Varmint	187	132
Furbearer	356	378
Annual Fishing	779	792
Senior Fishing	214	161
1-Day Fishing	62	106
Gamefish Spearing/Archery	152	151

Nonresident	2016	2015
Small Game	2,620	2,644
Youth Small Game	172	153
Annual Shooting Preserve	11	15
5-day Shooting Preserve	125	99
1-day Shooting Preserve	100	82
Spring Light Goose	7	5
Youth Spring Light Goose	0	0
Migratory Bird Certificate	11	2
Predator/Varmint	147	125
Furbearer	0	1
Annual Fishing	803	994
Family Fishing	217	304
Youth Annual Fishing	38	49
3-Day Fishing	322	664
1-Day Fishing	352	420
Gamefish Spearing/Archery	49	65
TOTAL ON FILE =	10,184	10,732