

Minutes of the Game, Fish, and Parks Commission
July 11, 2018

Chairman Barry Jensen called the meeting to order at 8:35 a.m. CT at the Ramkota Hotel & Convention Center in Pierre, South Dakota. Commissioners Barry Jensen, Gary Jensen, Mary Anne Boyd, Jon Locken, Cathy Petersen, Scott Phillips, Russell Olson and Douglas Sharp and approximately 60 public, staff, and media were present.

DIVISION OF ADMINISTRATION

Conflict of Interest Disclosure

Chairman B Jensen called for conflicts of interest to be disclosed. None were presented.

Approval of Minutes

Chairman B Jensen called for any additions or corrections to the June 7-8, 2018 minutes or a motion for approval.

Motion by G. Jensen with second by Olson TO APPROVE THE MINUTES OF THE JUNE 7-8, 2018 MEETING. Motion carried unanimously.

Additional Commissioner Salary Days

No additional salary days were requested

License List Request

Chris Petersen, administration division director, presented a license list requests to the Commission from Dallas Cares via Jack Gunvordahl, Burke, SD for a reduced fee license list request for licensed preserve operators in Gregory and Tripp Counties. It was noted this request is for one-time to contact the operators in regards to participation in a donation program.

Motioned by Phillips, second by Peterson TO APPROVE THE LICENSE LIST REQUEST. Motion carried unanimously.

Non-meandered Waters

Kevin Robling, special projects coordinator, provided the commission an update on nonmeandered waters stating no additional closure requests have occurred since February 22, 2018. The provisions of the Open Water Compromise continue to provide a good balance between protecting private property rights and providing public recreational opportunities. To date, 3,700 acres of nonmeandered waters are closed across the state. Game, Fish and Parks (GFP) staff have been continually reaching out to sportsmen and woman via social media, sport shows, email inquiries and phone calls. The "recreation and respect" campaign has been front and center. An adopt-a-lake program has been initiated and two shoreline litter clean-up days have occurred thus far on Lake Poinsett and the Big Sioux River.

B. Jensen said the commission is dedicated to public access and every commissioner puts in a lot of effort making sure this happens and appreciates Kevin's efforts.

Peterson thanked Kevin for his work with landowners.

Resident Nonresident Discussion

Scott Simpson, wildlife administration chief, and Robling provided an update on the discussion surrounding resident and nonresident license allocations. The update addressed the demographic information available for nonresidents already contained within our licensing database. Age, gender, state of residence and frequency of license purchase were presented. The next step continuing this conversation will be to identify a work group that will begin to work on answering the questions previously identified by the commission.

B. Jensen asked if there have been discussions in regards to surveying nonresident hunters.

Robling responded staff have been discussing doing a quantitative and qualitative survey. Need to know who our nonresidents are, and what other questions we want answered.

Olson noted the data presented is great and asked if preserve licenses are included in the stats.

Simpson said preserve licenses are included in the total number of hunters but not in the small game license frequency.

G. Jensen appreciated the info that was gathered. He asked if there were further discussions in regards to putting together a workgroup as we do for management plans to see where it leads us.

Robling said staff will move forward with a workgroup and request a Commissioner be part of that group.

Preserve Operator Forum

Robling informed the commission on the upcoming preserve operator forum scheduled for July 31st. He explained the forum is similar to the forum with sportsmen and women earlier in April and will have two more forums later this year (other Recreational Groups, Agricultural Groups). The forum will provide the opportunity to meet with preserve operators to listen, learn and discuss topics that are important them and their business and also to GFP and sportsmen and women. Some of those topics may include sustainable habitat or addressing the decline of hunters across the nation (R3 - recruitment, retention and reactivation), but we also know there are other topics they may want to discuss, as well. Staff will report out at the September meeting.

Trespassing Issues

Tony Leif, wildlife division director, and Andy Alban, law enforcement program manager, provided information on trespassing issues per request of Commissioner Phillips as individuals have contacted him over the years as they deal with repeated known

trespassing and would like to see it enforced as the states attorney is not prosecuting or it is minimal.

Alban noted these are legislative issues. He explained the first category is criminal trespass for building or property after notice is made which can be a fence with posting or verbal communication and this has no bearing on hunting privileges. Second is vehicular trespass which also has no bearing on hunting fishing or trapping privileges. GFP staff most often deal with hunting fishing and trapping trespass and there is a knowing violation. If found guilty of this they lose privileges for one year of the date of conviction. There is also unknowing hunting, fishing, and trapping trespass where things may not clearly be marked,

Phillips asked of the 65 knowing trespass violators do we know how many were fined through the court system. He noted landowners need to be party to file formal complaint.

Leif said every year there is a process to take on legislative issues in conjunction with the Governor's office on department sponsored legislation. This will be one of the topics we will discuss with the Governor's office. Legislation can also be introduced through an individual's and legislator and staff are available to help aid in crafting legislation.

Phillips recommends the legislative process and asked to personally be involved.

Sharp said with trespass law you should assume you may be trespassing if you do not own the land. He thinks there is a need to get back to this and issue tickets/fines similar to speeding tickets and after the second violation you lose your privileges. People are very willing to push the limits in today's society we need to be aggressive to get these things changed. Sharp will monitor this process along with Commissioner Phillips.

B. Jensen said a considerable amount of consideration among landowners who have come to the point where they do not report as there are not adequate repercussions.

G. Jensen explained the legal system is set up to give considerable amount of jurisdiction to the states attorney. So, in addition to legislation there is a need to meet with the states attorney association to discuss this issue to find a better way of approaching this situation.

Alban said he has presented information to the association in the past and will work to get on their agenda again.

Deer License Allocation

Robling explained that during the development of the statewide deer management plan, which was finalized in July 2017, several social management considerations were identified through stakeholder group meetings and public comments. One area which received considerable attention from the public was deer license allocation. As a result, the Commission tasked the Department to identify alternatives which would increase the number of hunters who draw their preferred deer license.

Department staff along with feedback from the deer stakeholder committee developed three alternatives to the current license allocation process, with the third alternative being no change to the current allocation system. An email invitation was then sent out to all 2017 resident deer applicants (18 years and older), requesting public involvement participation and attendance at one of the nine focus groups meetings held across the state. The meeting locations included; Pierre, Philip, Yankton, Sioux Falls, Watertown, Aberdeen, Rapid City, Belle Fourche, and Mitchell. Approximately 780 deer hunters responded to the request and a random draw was conducted to cap each focus group meeting to 45 participants. The main objectives of the focus groups include; 1) provide draw statistic and background information; 2) discuss the potential alternatives; 3) receive feedback on level of support or opposition for the alternatives; and 4) determine how participants would apply for deer licenses under each alternative using mock applications.

In an effort to allow broader participation from hunters and another opportunity to provide feedback, an online video was also posted on the Department's social media pages and website. The intentions of the video were to provide draw statistics and background information and receive feedback on level of support or opposition for the alternatives through an online survey. Over 600 hunters watched the online video and filled out the survey.

The Department recommendation was presented to the Commission during the July meeting and was formally adopted as a Commission proposal. The proposed change would require applicants to make a preferred first choice in the first draw from the six firearm seasons which include East River, West River, Black Hills, Custer State Park, Refuge, and Muzzleloader deer seasons. The proposal will have a 90-day public comment period with two public hearings, one during the September meeting in Yankton and the other hearing is scheduled for October in Deadwood. Staff have been responding to numerous calls and emails regarding the proposal and the proposed change has generated a great deal of public feedback both positive and negative.

B. Jensen noted this is a monumental change and asked when it would be reevaluated.

Robling responded the 2022 deer management plan will be up for review so we would look at 2019-2021 to give us 3 years of data. Hoping it shows increased draw possibilities

PROPOSALS

Deer License Allocation

Robling presented the deer license allocation proposal designed to increase the number of deer hunters who draw their preferred license. He noted this proposal does not impact current preference points, the ability to accumulate preference points or limit the number of licenses an individual could obtain. He said the department conducted a series of nine focus group meetings to discuss three alternatives to the deer license structure. A video and online survey was also available to those deer hunters who were not initially part of the focus groups allowing them a part of the discussion. Results from the focus group meetings suggested that approximately 46 percent of the participants preferred change. Of the online respondents, 43 percent preferred change. When looking at the number of resident hunters who typically apply for one deer season, which in 2017 represented 67

percent of firearm deer applicants, 72 percent of the focus group participants preferred change and 50 percent of the online respondents preferred change.

Alternatives discussed at statewide Focus Group meetings and on-line video.

- A. Choose one from East River, West River, and Black Hills as a first choice in the first draw.
- B. Choose one from East River, West River, Black Hills, Custer State Park, Refuge, and Muzzleloader as a first choice in the first draw.
- C. No change from the current structure.

Recommended changes from the current drawing structure:

1. Alternative B which requires an individual to select their most preferred license from the six seasons in the first draw.

Motion by Phillips, second by G. Jensen TO APPROVE THE RECOMMENDED CHANGE TO CHOOSE ONE FROM EAST RIVER, WEST RIVER, BLACK HILLS, CUSTER STATE PARK, REFUGE, AND MUZZLELOADER AS A FIRST CHOICE IN THE FIRST DRAW. Motion carried.

Indian Springs Boat Restrictions

Robling presented the recommended changes to the Indian Springs boating restrictions explaining it is a nonmeanded waterbody and as a result, numerous discussion regarding the continued allowance of recreational use on the waters have occurred with the surrounding landowners. He explained this change in rule would allow recreational users the opportunity to recreate on all portions of Indian Springs the vast majority of the year and would meet the requests of the landowners.

Recommended changes

- 1) Add a "no discharge of a weapon from a boat zone" on the waters west of a half mile east of 427th avenue within Indian Springs from October 10 to December 31.
- 2) Add fishing from a boat is prohibited on the waters west of a half mile east of 427th avenue within Indian Springs from October 10 to December 31.

Motioned by G. Jensen, second by Sharp TO APPROVE THE RECOMMENDED RESTRICTIONS TO INDIAN SPRINGS. Motion carried.

PUBLIC HEARING

The Public Hearing began at 10:03 a.m. and concluded at 10:51 a.m. and began at 1:56 p.m. and concluded at 2:00 p.m. on Wednesday, July 11, 2018. The minutes follow these Commission meeting minutes.

FINALIZATIONS

Firewood Restriction

Bob Schneider, parks and recreation assistant director, presented the recommended change to prohibit firewood because the Emerald Ash Borer (EAB) is a devastating insect that has killed tens of millions of ash trees in at least 32 states. In May, 2018, the insect was discovered in South Dakota. The South Dakota Secretary of Agriculture declared an emergency EAB quarantine area that firewood cannot be moved out of. The quarantine area includes all of Minnehaha County and portions of Turner and Lincoln County area and will grow if the infestation moves beyond the area. The larva and insect can survive in firewood for extended periods of time. One of the most common means for spread of the EAB infestation is the transport of infested firewood. By not

allowing firewood into state park areas from outside of South Dakota and from EAB quarantine areas within South Dakota, we hope to slow the infestation. Knowing that the EAB would reach South Dakota, we ceased planting ash trees in state park areas over a decade ago and increased the planting of alternate tree species. Each year that the EAB can be kept out of a state park area will allow more time for alternate species trees to mature.

Motioned by Boyd, second by G. Jensen TO FINALIZE THE RECOMMEND CHANGES TO PROHIBIT FIREWOOD FROM QUARANTINE AREAS BE BROUGHT INTO STATE PARKS 41:03:01. Motion carried.

Fall Turkey

Chad Switzer, wildlife program administrator, presented the recommended changes to the fall wild turkey hunting season. He detailed the harvest management strategy table of the wild turkey management plan and unit-specific population objectives for the prairie units. He noted prairie unit 48A is being modified to address depredation complaints in the areas outside the current unit boundary. Adjustment recommendations to the Black Hills unit boundary are justified based on survival rates and population growth rates derived from a current research project in the northern Black Hills.

1. Offer 305 less resident single tag licenses and 50 less resident double tag licenses for Prairie Units compared to 2017.
2. Offer 200 less resident single tag licenses for the Black Hills Unit compared to 2017.
3. Close prairie units 8A (Davison and Hanson counties), 12A Bon Homme County, 13A (Brule County), 37A (Hutchinson County), 53A Perkins County, and 62A Union County.
4. Establish and open prairie unit 39A (Jackson County).
5. Modify current prairie unit 48A (Marshall and Roberts counties) to include all of Roberts County.
6. Modify current Black Hills Unit by removing those portions of Lawrence, Meade and Pennington counties.

Motioned by Phillips, second by Olson TO FINALIZE THE CHANGES TO THE FALL TURKEY HUNTING SEASON AS PROPOSED 41:06:14. Motion carried.

Switzer presented the recommended change in administrative action to allocate fall turkey hunting licenses by unit.

Motioned by G. Jensen, second by Olson TO APPROVE THE ADMINISTRATIVE ACTION ALLOCATING FALL TURKEY LICENSES. (Appendix A). Motion carried.

Archery Equipment Restrictions

Robling and Simpson presented the recommended changes to remove certain archery equipment restrictions as equipment has evolved. He explained how expanding the list of legal equipment will remove confusing and often unenforceable regulations. Modification of the rule will also allow archers to make equipment decisions based on personal preference, performance and tailor their equipment setup to their individual requirements.

- (1) Explosive, poisonous, hydraulic, or pneumatic points;
- (2) Crossbows and draw-lock devices that hold the bow at partial or full draw except as provided in chapter 41:09:12;
- (3) ~~Arrow rests that have more than three inches of continuous contact with the arrow;~~

~~(4) Electronic devices mounted to the bow that aid in the taking of game. However, cameras, video cameras, cell phones used exclusively for photographic purposes, lighted sight pins, and illuminated arrow nocks may be used. An electrical device mounted to the bow to project a light beam or image to a target;~~

(5) Electronic arrow or electronic string releases;

~~(6) Compound bows with a let off of more than 80 percent;~~

~~(7) Compound bows shorter than 28 inches as measured from the top of the upper wheel or cam to the bottom of the lower wheel or cam;~~

~~(8) Telescopic sights;~~

~~(9) An arrow, including the attached broadhead, weighing less than 275 grains when hunting a big game animal;~~

~~(10) An arrow that is less than 26 inches long when measured from the notch of the neck to the end of the shaft, not including the blunt or broadhead;~~

~~(11) An arrow without a broadhead (fixed or mechanical) that has at least two metal cutting edges when hunting big game animals. However, an arrow tipped with any point may be possessed when used for practice; except blunt points may be used when hunting a turkey or small game and both field points and blunt points may be possessed and used when hunting small game or at any time when possessed and used as practice arrows;~~

~~(12) A bow that measures less than 40 pounds pull when hunting elk with a mechanical broadhead or a bow that measures less than 40 pounds pull when hunting any other big game animal with a mechanical broadhead; or~~

~~(13) A bow that measures less than 30 pounds pull when hunting big game animals other than elk. with a fixed blade broadhead or a bow that measures less than 30 pounds pull when hunting any other big game animal with a fixed blade broadhead.~~

Phillips inquired if 4 would allow for range finders and auto sight pins.

Simpson said the intention is to address rangefinders that are not uncommon and this language change would allow for this type of new technology.

Phillips asked for confirmation that 4 and 8 would allow for telescopic sights and sight pins

Simpson confirmed that it would allow for both explaining it was commented that these would allow for longer distance shots. He said we are already seeing longer shots and allowing these sights will allow a hunter to make a better shot not, necessarily encourage you to take a longer shot

G. Jensen asked if it is fair to compare and contrast this equipment on a bow to a rifle.

Simpson explained you can make that argument, but it does not impact the fair chase idea that we need to be cognizant of.

B. Jensen inquired if it would be better to list kinetic energy opposed to pounds of pressure.

Robling explained kinetic energy would be very difficult to gage and enforce in the field.

Simpson further explained that additional equipment would be need to measure kinetic energy and that most people do not have have the specific equipment.

Sharp stated that at 275 grain arrowhead we are the lightest and asked if there is merit to having it be heavier.

Robling clarified that we are one of 7 states with the minimum set and ours is the lowest. All other states do not have a minimum.

Boyd asked how current restrictions would make it a safer hunt even for a novice hunter now that education requirements have been removed.

Simpson said safety was an important consideration for these specific requirements. The safety concern would only be if you possibility built an arrow that is so light that doesn't hold up to the spine, but that could happen regardless of these restriction

Peterson asked if the importance of shot placement of the kill is taught at hunter education.

Simpson noted shot placement is important regardless of weapon which is taught at huntsafe and bowhunter education.

Olson said he was immediately concerned with the proposed changes then spoke with others who are very involved with the sport and they do not have concerns. He asked why they do not allow telescopic sights on muzzleloaders so why on archery and how does it still allow for primitive status.

Simpson explained it goes against primitive nature which archery began as and has now moved past. He said most are of the mind it will make them more successful with a more humane kill to kill a deer with the one license they have. Maybe there is a need to readdress muzzleloader as modern muzzleloader as they are no longer a primitive weapon with their effective range.

Phillips stated that if we are beyond primitive weapon stage then we need to take a look at season lengths and unlimited tags. He noted he is opposed to 4 and 8 would like to see removed from recommended changes

Kelly Hepler, cabinet secretary, noted muzzleloader will be discussed as a department at a later date. He said most shoot animals at 10-20 yards with a bow and approximately 100 yards with gun. Hepler also noted that a primary goal was accomplished by bringing items forward such as these philosophical issues. Just want to allow more opportunity.

Motioned by Phillips second by Boyd TO AMEND THE CHANGES TO THE ARCHERY RESTRICTIONS TO REMOVE THE PROPOSED ELIMINATION OF THESE RULES AND TO RETAIN

~~(4) Electronic devices mounted to the bow that aid in the taking of game. However, cameras, video cameras, cell phones used exclusively for photographic purposes, lighted sight pins, and illuminated arrow nocks may be used~~
An electrical device mounted to the bow to project a light beam or image to a target;

~~(8) Telescopic sights;~~

Motion carried.

Motioned by G. Jensen, second by Sharp TO FINALIZE CHANGES TO THE ARCHERY RESTRICTIONS AS AMENDED 41:06:05. Motion carried.

Refuge and Boating Restrictions

Robling and Mike Klosowski, wildlife regional supervisor, presented the recommended changes to the refuge and boating restrictions. (appendix B)

Olson asked when the changes would go into effect if approved.

Robling responded early to mid Sept.

Sharp recommended tabling decisions on electric motor zone restriction as they will have the most questions. He also requested Swan Lake be addressed separately.

Hepler recommended further information from staff on electric motors and concerns.

Leif said if no changes are made at this meeting we will need to either re-propose and take action in September or address them at the same time as Missouri River refuges

Motion by Sharp, second by Olson TO APPROVE THE RECOMMENDED CHANGES FOR THE REFUGE AND BOATING RESTRICTIONS TO

- Removed the East Oakwood Lake Waterfowl Refuge and the “no boating zone” from Oct. 20 – Dec. 31 in Brookings County.
- Removed the Sand Lake Game Bird Refuge in Campbell County.
- Removed the Whitewood Lake State Waterfowl Refuge and the “no boating zone” from Oct. 20 – Dec. 31 in Kingsbury County.
- Removed the State Waterfowl Refuge status on the Game Production Area located on the south side of Cottonwood Lake in Spink County.
- Removed the Crow Lake “no motorized boating zone” from Oct. 20 – Dec. 31 in Jerauld County.
- Removed the Milwaukee Lake “no motors zone” from Oct. 20 - Dec. 31 in Lake County.
- Removed the Island Lake “no boating zone” from Oct. 20 – Dec. 31 in McCook and Minnehaha Counties.

Motion carried.

Motion by G. Jensen, second by Sharp TO APPROVE THE RECOMMENDED CHANGES FOR THE REFUGE AND BOATING RESTRICTIONS

- Reclassified the Waubay State Game Refuge to Waubay State Game Bird Refuge and removed the “no boating zone” in the Windgate Arm in Day County.
- Removed the state game refuge status in the Windgate Arm area for Waubay Lake in Day County and the lands adjacent to the national wildlife refuge below the ordinary high water mark.
- Modified the pheasant hunting start date from the second Monday in Dec. to Dec. 1 for Renziehausen State Game Bird Refuge in Brown County, (including shooting and retrieval zones), Gerken State Game Bird Refuge in Faulk County and White Lake State Game Bird Refuge in Marshall County.
- Modified the Bear Butte Lake “no motors over 25 horse power zone” to a “no wake zone” in Meade County.

Motion carried.

Motion by Sharp, second by G. Jensen TO AMEND THE RECOMMENDED CHANGE FOR SPIRIT LAKE IN KINGSBURY COUNTY FROM AN ELECTRIC MOTORS ZONE TO COMPLETE REMOVAL OF ALL BOATING RESTRICTIONS DURING THE OCT. 20 – DEC. 31 TIMEFRAME. Motion carried.

Motion by Peterson, second by Boyd TO APPROVE THE RECOMMENDED CHANGE FOR SPIRIT LAKE IN KINGSBURY COUNTY AS AMENDED. Motion carried.

Motion by Olson, second by Sharp TO REJECT THE RECOMMENDED CHANGE FOR THE REFUGE AND BOATING RESTRICTIONS

- Removal of Silver Lake “no boating zone” during the spring conservation order (spring take of light geese) as well as during regular open migratory waterfowl hunting seasons in Hutchinson County.

- Lehrman Game Production Area “no boating zone” to an “electric motors only” zone from Oct. 20 – Dec. 31 in McCook County.
Motion carried

Motion by Sharp, second by Locken TO REJECT THE RECOMMENDED CHANGES FOR THE REFUGE AND BOATING RESTRICTIONS AND REVIEW AT A LATER TIME

- Cottonwood Lake State Refuge “no boating zone” during the open migratory waterfowl hunting season to “electric motors only” from Oct. 20 – Dec.31 in Roberts County.
- Putney Slough “no boating zone” to “electric motors only” and changed the date from Oct. 15-Dec.31 to Oct. 20 – Dec.31 in Brown County.
- Long Lake “no boating zone” to “electric motors only” from Oct. 20 – Dec. 31 in Codington County.
- McKillican Lake “no boating zone” during open migratory waterfowl hunting seasons to an “electric motors only” from Oct. 20 – Dec. 31 in Codington County.
- Horseshoe Lake “no motor zone” during open migratory waterfowl hunting seasons to an “electric motors only” from Oct. 20-Dec. 31 in Codington County.
- Clear Lake “no boating zone” to an “electric motors only” from Oct. 20 – Dec. 31 in Minnehaha County.
Motion carried.

Motion by Sharp, second by G. Jensen TO REJECT THE PROPOSAL TO ADD AN ELECTRC MOTORS ONLY ZONE ON SWAN LAKE, CLARK COUNTY. FROM OCTOBER 20- DECEMBER 31. Motion carried.

Fish Limits – Reetz Lake

Robling presented the recommended change to fish limits on Reetz Lake stating the lake will be managed as an experimental trophy fishery for walleye, yellow perch, black crappie and bluegill from May 1- September 30. During this time Reetz Lake will be open to the public. From October 1 – April 30 Reetz Lake will only be open through landowner permission and during this time, statewide fishing regulations will apply to all species.

Boyd noted it has not been simple getting to this proposal and asked Robling to highlight the process.

Robling explained there has been lots of discussion with the Reetz family including 5 personal visits since March. He presented a \$4,000 offer that was counter offered to be \$8,000 annually for 5 months of use. He said they have had discussions in regards to the periods when to be open and fish regulations. Have asked landowners to keep regulations year round and moved forward to propose agreement with regulation changes. He noted the department is aware of and in tune with concerns of all including sportsmen and sportswomen and are committed to allowing access. Also concerned with the opportunity that would be lost if we do not take this offer which would make it closed 12 months of the year.

Phillips noted 140,000 resident anglers with a payment at \$8,000 dollars a year is a pretty good deal at 5-6 cents per angler.

B. Jensen asked Robling to speak to how this would be setting precedence.

Robling responded there is a fear that we are setting precedence. He has spoken with other landowners with no discussion on compensation as of today, not that there

wouldn't be in the future. He said this is similar to WIA's where the department pays some over \$10 per acre. If you consider the amount of use and fishery potential Reetz Lake is set apart especially because the entire basin except a few acres is owned by one family. If this moves forward we would not plan to stock Reetz Lake with a one year agreement.

Peterson reminded the Commission of codified law the department is working with that SDCL 31-23-3 states "The department, on behalf of and in the name of the state, may negotiate with each landowner to acquire, by gift, grant, devise, purchase, lease, or license, recreational use of all or any portion of any nonmeandered lake overlying private property. Any agreement reached pursuant to this section, or any failure to reach an agreement, is not an appealable final action of the department." This give the department an opportunity to negotiate with landowners on specific terms and conditions set by the landowner to ensure recreational opportunities are not lost and continue for the 140,000+ resident anglers that enjoy fishing in South Dakota. The department has the obligation to implement SDCL 41-23 and it is our goal to continue providing recreational opportunities to families and outdoor enthusiasts who enjoy South Dakota's great outdoor resources

B. Jensen said he knows there is opposition but in light of the goal to provide opportunity he recommends a one year agreement.

Olson commended Robling for his work in the negation process and value as it was undervalued. He noted that principle will not allow him to support this agreement. If it would be open for 12 months of the year he could support it. He thanked staff for all their work.

Phillips said that in regards to landowners changing regulations. He doesn't see a problem with it for example if people go to him home to hunt with antlerless tag he tell them whitetail only.

Robling explained the fact that when closed commercialization is prohibited and would be a class one misdemeanor. The landowner is aware of this. Per family they will donate the money they receive to the Webster School District Athletic Association.

Motion by Phillips, second by Peterson TO MODIFY THE FISH LIMITS TO

May 1 – Sept. 30

- 1 walleye or sauger, 28 inches or greater
- 1 yellow perch, 14 inches or greater
- 1 black crappie, 15 inches or greater
- 1 bluegill, 10 inches or greater
- Statewide regulations for all other species.

Oct. 1 – April 30

- All lake specific harvest restrictions are off and statewide regulations would apply to all species.

And remove the largemouth and smallmouth bass size restrictions year-round and changed to statewide harvest regulations.

Roll call vote: Boyd-yes; Locken – yes; G. Jensen-yes; Olson- no; Peterson-yes; Phillips – yes; Sharp- yes; B. Jensen-yes. Motion passes with 7 yes votes and 1 no vote. Motion passes.

Robling noted fishing is not open tomorrow and that notification will go out when it is open.

OPEN FORUM

Chairman B. Jensen opened the floor for discussion from those in attendance on matters of importance to them that may not be on the agenda.

Martie Haines, Faith, SD, spoke in regards to out of state archery tags. He asked if there has been discussion to regulate out of state archery tags, will they be strictly public or private.

Leif responded this has been drawn into a broader discussion. People want public lands and broader restriction to all licenses. Past the timeframe to implement 2018 restrictions, but will bring discussion forward to the Commission in the future.

B. Jensen will be addressed in resident nonresident discussion we continue to have.

Dana Rogers, Hill City, SD, spoke in regards to nonresident permits and provided the commission a handout of stats from the GFP website. He said staff does excellent job gathering statistics and making them available. Noted other states require nonresidents to draw a permit or they are restricted to a specific area. He said currently there are unlimited archery permits for residents and nonresidents for antelope and deer. He noted 40 percent of mule deer are taken on public land by nonresidents. He is concerned with public land pressure.

Jake Leibke, Garden, City, SD, spoke in regards to nonresident archery licenses. He said nonresident archery deer concerns align with prior comments from Rogers. He noted private land probably gets less pressure as nonresidents typically hunt public land. Will continue to see increase in nonresident hunting pressure. On a trip to Custer national forest area in 2016 all camping spots, approximately 20, were filled with nonresidents and only two were residents.

Jon Kotilnek, staff attorney, informed the commission a contested case hearing has been scheduled for September. He also advised the commission to not engage in dialogue as Mr. Allen is represented by an attorney. Commissioners are free to make a personal statement, but advised commission not to comment as hearing is requested in regards to denial on a bait dealer application.

Justin Allen, Eden, SD spoke in regards to his bait dealer license. He said he feels the hearing is being delayed so he cannot bait. He requested the commission to allow him to bait until the hearing.

Bonnie Allen, Atwater, MN, spoke in regards to her sons bait dealer license.

DIVISION OF PARKS AND RECREATION

Roy Lake Prospectus

Sean Blanchette, concessions manager, provided the Commission information on the settlement agreement with Roy Lake Resort LLC, Concessionaire at Roy Lake Resort. The operation consists of 8 rental cabins, a 4-plex lodging unit, main lodge with 2 lodging units, C-store, dining room and on-the-water gas sales. The current concession lease

includes a franchise fee of 4 percent on revenues up to \$200,000 and 5 percent for revenues in excess of \$200,000 and expires on December 31, 2018. The property was appraised and the department issued multiple prior prospectuses to advertise for the resort sale and concession lease opportunity. No proposals were received in response to the previous prospectuses. The purchase price has been reduced by the resort owner to \$795,000.00 which includes structures and personal property. Recommendations for a new lease were 10 year term with Franchise Fees, required services and operating season all remaining the same as in the current lease. The settlement agreement sets up terms and conditions of closing. In November 2017, the Commission approved a settlement agreement which contained the same terms as the version presented with the exception of the reduce sale price as well advertisement of a new concession lease with terms that match those in the existing agreement. The Commission authorized a second prospectus issuance in March 2018. Roy Lake Resort has requested authorization to advertise a prospectus for sale of the concession lease. Blanchette requested approval of the presented settlement agreement as well as authorization to issue a prospectus to include a concession lease containing the lease terms discussed with the Commission.

Motioned by G. Jensen with second by Peterson TO APPROVE THE SETTLEMENT AGREEMENT AND AUTHORIZE THE DEPARTMENT TO ISSUE AND ADVERTISE A PROSPECTUS FOR THE SALE OF ROY LAKE RESORT CONCESSION LEASE. Motion carried.

Parks Revenue and Camping Reservation Report

Bob Schneider, parks and recreation assistant director, provided the year to date revenue report by item as well as the breakout of district revenue. The revenue report indicated an increase of 4 percent. He reported camping is down 6 percent and visitation is down 3 percent, and visitation by district is down 5 percent.

DIVISION OF WILDLIFE

Big Horn Sheep Management Plan

Switzer said the South Dakota Bighorn Sheep Management Plan, 2018-2027 will serve as the guiding document for decision making and implementation of actions to ensure bighorn sheep populations and their habitats are managed appropriately. South Dakota Department of Game, Fish, and Parks (SDGFP) will work closely with United States Forest Service (USFS), National Park Service (NPS), private landowners, and sportsmen and women to overcome the challenges and take advantage of opportunities regarding the future management of bighorn sheep in South Dakota.

For the management of bighorn sheep the following objectives have been identified: 1) management and monitoring of disease pathogens in bighorn sheep herds across South Dakota; 2) annually determine status of bighorn sheep populations; 3) bi-annually review and formulate bighorn sheep management objectives; use harvest strategies to manage the population with the available resource; 4) maintain, manage, and protect existing bighorn sheep habitat and augment populations to either maintain or start new herds in vacant habitat in South Dakota; 5) continue to use science-based research, habitat inventories, and surveys to answer questions related to bighorn sheep ecology and public attitudes towards bighorn sheep management; and 6) the SDGFP will inform and educate the public on bighorn sheep ecology, management, research, and provide viewing opportunities.

He detailed the following edits that occurred since meeting with the Bighorn Sheep Working Group:

- 1) General edits such as changing it to “10” year versus “5” year, and checking citations.
- 2) Updated current units map for 2018.
- 3) Updated Auction Tag Revenue table for 2018.
- 4) Removed Badlands Hunting Unit as a “new” unit since it is already in place.
- 5) Added Strategy D in Objective 4 for our agency partners to cite for their habitat activities:
Strategy D. Avoid disturbance during critically sensitive parturition and nursery periods. Parturition for ewes can occur from April 15-June 15. Nursery groups can be raising lambs in sensitive areas during May 1- August 31.

Motion by Olson, second by Boyd TO ADOPT THE BIGHORN SHEEP MANAGEMENT PLAN. Motion carried.

Mountain Goat Management Plan

Switzer explained the South Dakota Mountain Goat Management Plan, 2018-2027 will serve as the guiding document for decision making and implementation of actions to ensure mountain goat populations and their habitats are managed appropriately. South Dakota Department of Game, Fish and Parks will work closely with Black Hills National Forest, National Park Service, and sportsmen and women to overcome the challenges and take advantage of opportunities regarding the future management of mountain goats in South Dakota.

For the management of mountain goats the following objectives have been identified: 1) maintain, manage, and protect existing mountain goat habitat in the Black Hills; 2) determine status of mountain goat populations; 3) bi-annually review and set mountain goat management objectives; use harvest strategies to manage the population with the available resource; 4) management and monitoring of disease pathogens in mountain goat herds in the Black Hills; 5) continue to use science-based research, habitat inventories, and surveys to answer questions related to mountain goat ecology and public attitudes towards mountain goat management; and 6) inform and educate the public on mountain goat ecology, management, research, and provide viewing opportunities.

He noted that since meeting with the Mountain Goat Working Group the following edits have occurred:

- 1) General edits such as changing it to “10” year versus “5” year, and checking citations.
- 2) Updating some tables with 2017 data.
- 3) Reworded page 16 in “Habitat” section of Challenges and Opportunities. Removed “mechanical thinning” from wilderness sentence of working with US Forest Service since this is not allowed in wilderness.
- 4) Added Figure 7 on page 14. Five-year trend which exemplifies the benefits of harvesting males and passing up females; if hunters take the time to select males instead of females, more goats will be available for future harvest and viewing by

the public. This provides more information on the importance of harvested males versus females in the plan.

- 5) Added Strategy C in Objective 1 for our agency partners to cite for their habitat activities:

Strategy C. Avoid disturbance during critically sensitive parturition and nursery periods. Parturition for nannies can occur from May 1-June 15. Nursery groups can be raising kids in sensitive areas during May 1- August 31.

Motion by Peterson, second by Phillips TO ADOPT THE MOUNTAIN GOAT MANAGEMENT PLAN. Motion carried.

Elk Raffle License Approval

Tom Kirschenmann, wildlife deputy and terrestrials chief,, presented request for elk raffle license from the Rocky Mountain Elk Foundation (RMEF) to be raffled off to raise funds for their program which protects and enhances habitat for the elk population and other species. He provided a project history noting that in South Dakota RMEF and its partners have completed 298 conservation and hunting heritage outreach projects with a combined value of more than \$36.5 million. These projects have protected or enhanced 73,812 acres of habitat and opened or secured public access to 11,472 acres.

Kirschenmann also provided a handout on Black Hills Special Elk Tag Raffle Results for the last 5 years. Revenue for 2018 was \$41,932.38.

Motioned by G. Jensen with second by Phillips TO APPROVE THE REQUEST FROM ROCKY MOUNTAIN ELK FOUNDATION TO OBTAIN AN ELK LICENSE TO BE RAFFLED OFF. Motion carried unanimously.

CWD Management Approach

Switzer and Andy Lindbloom, senior big game biologist, provided a presentation on chronic wasting disease (CWD). CWD is a fatal brain disease of cervids that is caused by an abnormal protein called a prion. Recent developments from ongoing research and surveillance efforts across the country has heightened the level of concern for the long-term management of deer and elk in South Dakota. Topics covered included the following: disease overview; CWD transmission; disease symptoms and impacts; CWD distribution across South Dakota and the nation; results of past CWD surveillance efforts; Department workgroup; and objectives identified by the workgroup.

The Department workgroup has identified five major objectives: limit spread of CWD from known locations; public education; determine CWD prevalence rates and thresholds for certain management actions; determine presence/absence of CWD; and public involvement. Workgroup meetings will be held on a regular basis to achieve these objectives, updates will be provided to the Commission, and regulation recommendations will be presented to the Commission in early 2019 for consideration and implementation.

Sharp asked if the fire in CSP mitigated some of this. He also noted hopes our goal is the benchmark for the country.

Switzer responded it is unclear what impact the fire had, but they are seeing nice effects of the fire for wildlife management.

Spawning and Stocking Update

John Lott, fisheries chief, provided an update on spawning and socking. He noted walleye egg collection efforts began on April 25 and were completed on May 5. Egg collection efforts typically begin by April 10th, with the peak occurring between April 20 and 25, and operations are completed by the beginning of May. Initial concerns about not being able to meet the 2018 egg-take goal of 130 million eggs, due to the late spring, were unfounded, as 138 million eggs were collected. The yellow perch egg collection goal of 20 million was not met, as only 2 million eggs were collected.

Spring trap and transfer operations to supply fish like white bass, catfish, and northern pike were reduced in 2018 by the late spring and the need to begin spawning walleyes immediately after ice-out.

Fingerling production of walleye, yellow perch, and saugeye combined was higher at Blue Dog Hatchery than during any previous year. Production at Blue Dog during the winter of 2017-2018 focused on growing juvenile yellow perch for southeastern SD fisheries. Muskies will likely not be stocked in 2018 because the Iowa hatchery where we had been getting fish now has zebra mussels in the lake where it gets its water. We are exploring other alternatives for muskies for 2019.

B. Jensen asked if spring flooding affect any stocked waters pushing them out of contained areas.

Lott responded Lake Hiddenwood had a winter kill and was stocked the day before the dam broke. Also the urban fishing area in Sioux Falls had the water level breached. He explained that is difficult to gage, but has not impacted any stocking efforts and effects will most likely will be seen in waterbodies adjacent just downstream.

Sportsmen Against Hunger Update (due to lack of time will be presented at future meeting)

License Sales Update (due to lack of time will be presented at future meeting)

Solicitation of Agenda Items from Commissioners

No agenda items were recommended

Adjourn

Motioned by Boyd, second by Peterson TO ADJOURN THE MEETING. Motion carried unanimously and the meeting adjourned at 5:05 p.m.

Respectfully Submitted,



Kelly R. Hepler, Department Secretary

Appendix A
2018-2019 Fall Turkey

Unit #	Unit Name	Resident		Nonresident		License Totals							
		AnyT 31	2 AnyT 37	AnyT 31	2 AnyT 37	RES 1-Tag	RES 2-Tag	RES Licenses	RES Tags	NR 1-Tag	NR 2-Tag	NR License	NR Tags
07A	Yankton	150				150		150	150				
30A	Gregory	150		12		150		150	150	12		12	12
39A	Jackson	25		2		25		25	25	2		2	2
48A	Marshall/Roberts	100				100		100	100				
50A	Mellette	50		4		50		50	50	4		4	4
60A	Tripp	50		4		50		50	50	4		4	4
BH1	Black Hills	200		16		200		200	200	16		16	16
TOTAL		725		38		725		725	725	38		38	38
				RES & NR:		763		763	763				

2016-17 vs. 2018-19 Fall Turkey

Unit #	Unit Name	2016-17 Resident Licenses	2018-19 Resident Licenses	# Change	% Change	2016-17 Resident Tags	2018-19 Resident Tags	# Change	% Change
07A	Yankton	100	150	50	50%	100	150	50	50%
08A	Davison/Hanson	50	0	-50	-100%	100	0	-100	-100%
12A	Bon Homme	150	0	-150	-100%	150	0	-150	-100%
13A	Brule	50	0	-50	-100%	50	0	-50	-100%
30A	Gregory	150	150	0	0%	150	150	0	0%
37A	Hutchinson	30	0	-30	-100%	30	0	-30	-100%
39A	Jackson	0	25	25	#DIV/0!	0	25	25	#DIV/0!
48A	Marshall/Roberts	100	100	0	0%	100	100	0	0%
50A	Mellette	50	50	0	0%	50	50	0	0%
53A	Perkins	100	0	-100	-100%	100	0	-100	-100%
60A	Tripp	50	50	0	0%	50	50	0	0%
62A	Union	50	0	-50	-100%	50	0	-50	-100%
BH1	Black Hills	400	200	-200	-50%	400	200	-200	-50%
TOTAL		1,280	725	-555	-43%	1,330	725	-605	-45%

Note: An additional 8% of the number of licenses will be available to nonresidents for the Black Hills and West River prairie units.

**Appendix B
GAME, FISH AND PARKS COMMISSION ACTION
FINALIZATION**

Refuges and Boating Restrictions

Chapters 41:04:02, 41:05:02 and 41:06:08

Commission Meeting Dates:	Proposal	June 7-8, 2018	Aberdeen
	Public Hearing	July 11, 2018	Pierre
	Finalization	July 11, 2018	Pierre

COMMISSION PROPOSAL

ACTION ITEM #1

Recommended changes from last year:

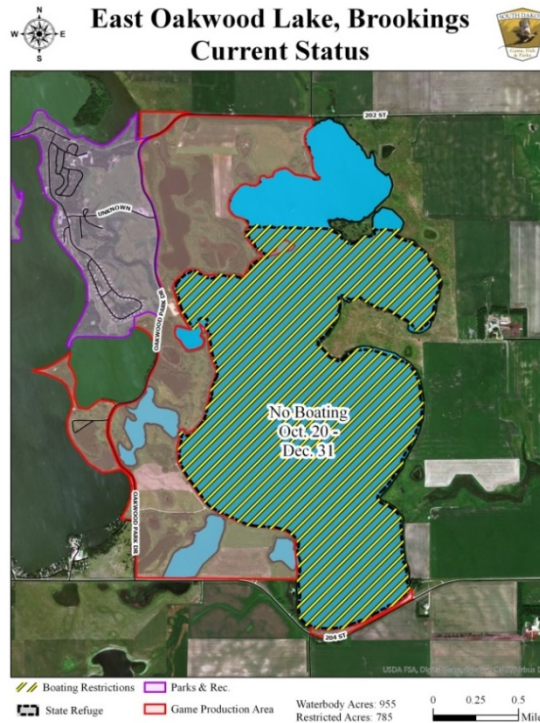
- 3) Remove the East Oakwood Lake Waterfowl Refuge and the "no boating zone" from October 20 – December 31.

41:05:02:05. Brookings County refuges. Brookings County refuges are as follows:

The East Oakwood Lake State Waterfowl Refuge comprises all of East Oakwood Lake, including the shore up to the high-water line, in sections 8, 9, 16, 17, the south half of section 4, and the south half of section 5, township 111 north, range 51 west of the fifth principal meridian.

41:04:02:05. Brookings County public water safety zones. Brookings County public water safety zones are as follows:

The waters of East Oakwood Lake in sections 8, 9, 16, 17, the south half of section 4, and the south half of section 5, township 111 north, range 51 west of the fifth principal meridian is a "no boating zone" from October 20 to December 31, inclusive;



DEPARTMENT RECOMMENDATION

Recommended changes from proposal: None.

STAFF COMMENTS

GFP staff have received numerous inquiries annually regarding removing the refuge status and boating restriction to allow for fall fishing opportunities. East Oakwood Lake is a high-use fishery and recent fish surveys indicate high walleye and perch populations. In addition, the boat ramp is in the closed area which makes fishing and launching in the current open area problematic.

COMMISSION PROPOSAL

ACTION ITEM #2

Recommended changes from last year:

- 4) Remove the Sand Lake Game Bird Refuge

41:05:02:10. Campbell County refuges. Campbell County refuges are as follows:

The Sand Lake State Game Bird Refuge comprises the south half of section 19, the west half of the northwest quarter of section 30, the northeast quarter of section 30, that portion of the southwest quarter of section 20 west of U.S. Highway 83, and that portion of the northwest quarter of section 29 west of U.S. Highway 83, all in township 125 north, range 76 west of the fifth principal meridian. The refuge on the land owned by the department is open to hunting each year from November 15 through August 31 of the following year.



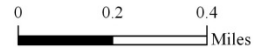
**Sand Lake, Campbell
Current Status**



State Refuge

Game Production Area

Waterbody Acres: 339



DEPARTMENT RECOMMENDATION

Recommended changes from proposal: None.

STAFF COMMENTS

Work group recommends removal of the refuge to add recreational opportunities and simplify rules. This area has a good amount of staging water available for waterfowl to use. Blue Blanket Waterfowl Refuge on the Missouri River is approximately 15 miles SW of Sand Lake.

COMMISSION PROPOSAL

ACTION ITEM #3

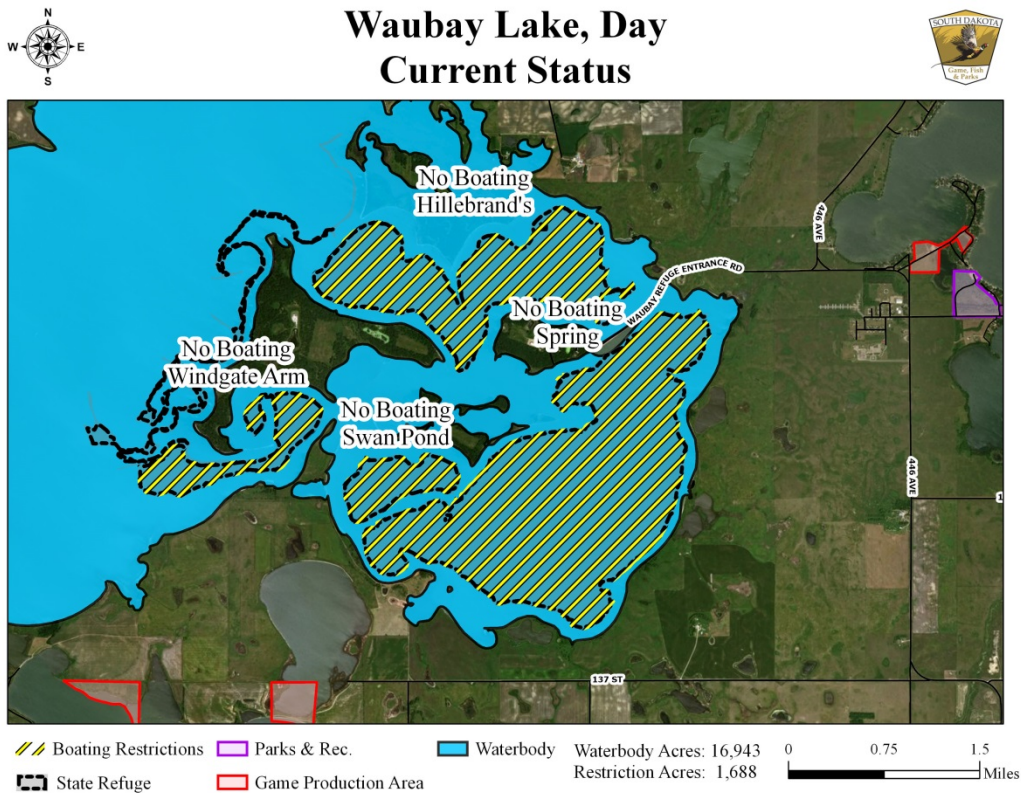
Recommended changes from last year:

- 5) Reclassify Waubay State Game Refuge to Waubay State Game Bird Refuge, and remove the “no boating zone” and “State Game Refuge” status in the Windgate Arm;

41:05:02:18. Day County game refuges. The refuge in Day County is the Waubay State Game Bird Refuge. This refuge comprises the lands and waters below the ordinary high-water mark associated with Hillebrand's Lake, Spring Lake, and Swan Pond; ~~that portion of Waubay Lake known as Windgate Arm lying east of the dike located in the south half of section 36, township 123 north, range 55 west; and the land below the ordinary high water mark on Waubay Lake lying adjacent to Waubay National Wildlife Refuge.~~

41:04:02:18. Day County public water safety zones. Day County public water safety zones are as follows:

- (6) ~~That portion of Waubay Lake known as Windgate Arm lying east of the dike located in the south half of section 36, township 123 north, range 55 west of the fifth principal meridian is a "no boating zone";~~



DEPARTMENT RECOMMENDATION

Recommended changes from proposal: None.

STAFF COMMENTS

Work group members met with Waubay NWR staff to discuss options that would allow for more recreational opportunities within the NWR boundary. Eliminating the no boating year round and State Game Refuge restrictions will allow recreational opportunities within the Windgate Arm portion of Waubay Lake. Reclassifying the Game Refuge to a Game Bird Refuge within the NWR boundary will allow refuge deer hunters the opportunity to harvest a deer and cleanup a rule that isn't needed.

ACTION ITEM #4

Recommended changes from last year:

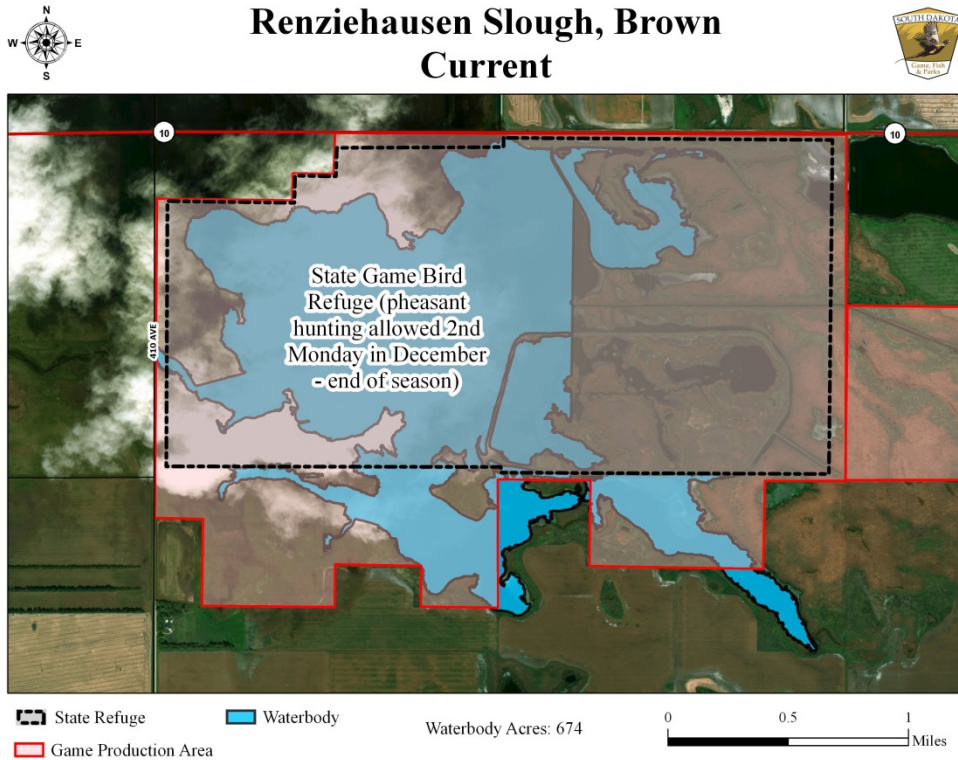
- 6) Modify the pheasant hunting starting date from the 2nd Monday in December to December 1 for Renziehausen State Game Bird Refuge including its shooting and retrieval zones, Gerken State Game Bird Refuge, and White Lake State Game Bird Refuge.

41:06:08:01. Pheasant hunting season established -- Open units and dates. The pheasant hunting season is open in the units and during the dates set out in this section. The season is open from 12:00 noon central time to sunset each day to the Friday preceding the fourth Saturday of October, inclusive. Beginning on the fourth Saturday of October, the season is open from 10:00 a.m. central time to sunset each day. The open dates and units are as follows:

(1) Unit 1: all counties in the state except for those areas described in Unit 2 and Unit 3. The season in Unit 1 is open beginning on the third Saturday of October and remains open to the first Sunday of January, inclusive;

(2) Unit 2: Renziehausen Game Production Area, Renziehausen State Game Bird Refuge including its shooting and retrieval zones, Gerken State Game Bird Refuge, ~~Sand Lake National Wildlife Refuge in Brown County~~, and White Lake State Game Bird Refuge. The season in Unit 2 is open beginning on ~~the second Monday of December 1~~ and remains open to the first Sunday of January, inclusive.

(3) Unit 3: Sand Lake National Wildlife Refuge in Brown County. The season in Unit 3 is open beginning on the second Monday of December and remains open to the first Sunday of January, inclusive.





DEPARTMENT RECOMMENDATION

Recommended changes from proposal: None.

STAFF COMMENTS

Currently, Gerken GPA, Renziehausen GPA and White Lake GPA open for pheasant hunting starting the 2nd Monday in December (December 11th in 2017). Data collected from the Waubay Refuge staff indicates average freeze dates since 1996 have occurred on December 1. This change would increase pheasant hunting opportunity on these GPA's and on an average year, would cause no disturbance to staging migratory waterfowl because the waterbodies would be frozen.

COMMISSION PROPOSAL

ACTION ITEM #5

Recommended changes from last year:

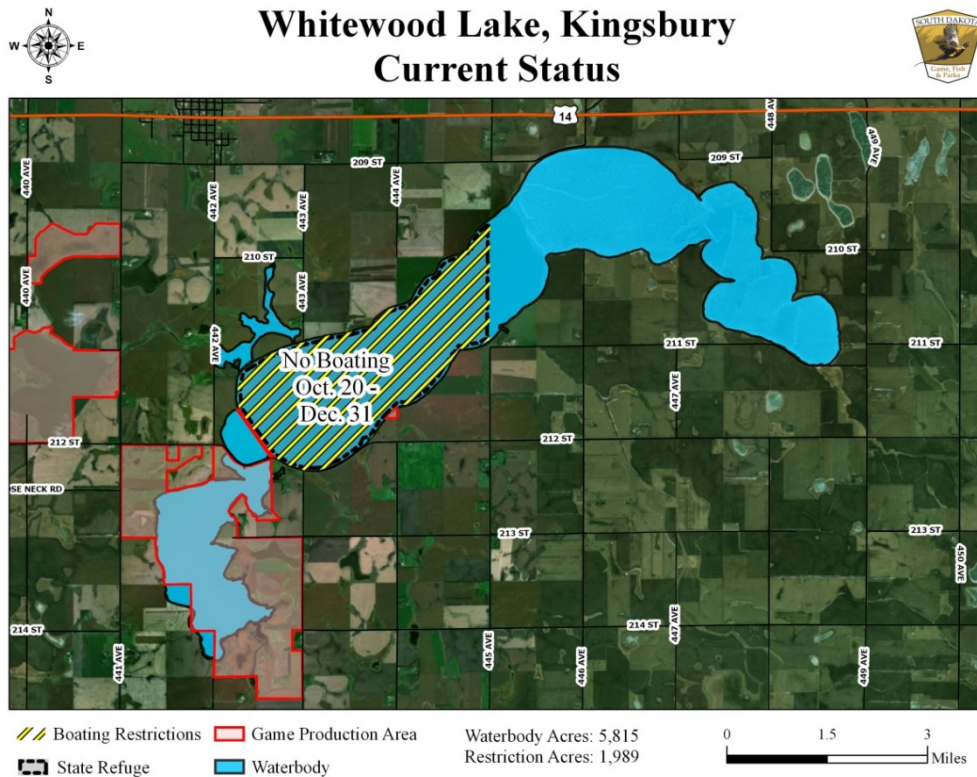
- 7) Remove the Whitewood Lake State Waterfowl Refuge and the “no boating zone” from October 20 to December 31

41:05:02:38. Kingsbury County refuges. The refuge in Kingsbury County is:

~~The Whitewood Lake State Waterfowl Refuge. This refuge comprises that portion of Whitewood Lake within the water's edge, bounded on the east by the east section line of sections 9 and 16, township 110 north, range 54 west of the fifth principal meridian and bounded on the west by the Chicago, Milwaukee and St. Paul Railroad grade, as posted, including all islands and bars within the area.~~

41:04:02:38. Kingsbury County public water safety zones. Kingsbury County public water safety zones are as follows:

- ~~(2) Whitewood Lake Waterfowl Refuge is a "no boating zone" from October 20 to December 31, inclusive;~~



DEPARTMENT RECOMMENDATION

Recommended changes from proposal: None.

STAFF COMMENTS

There is a vast amount of water covering the landscape in the surrounding area (>20,000 acres within a 5 mile radius) and Whitewood Lake is also a very popular fishery. Removing the restrictions would add recreational opportunities and simplify regulations.

ACTION ITEM #6

Recommended changes from last year:

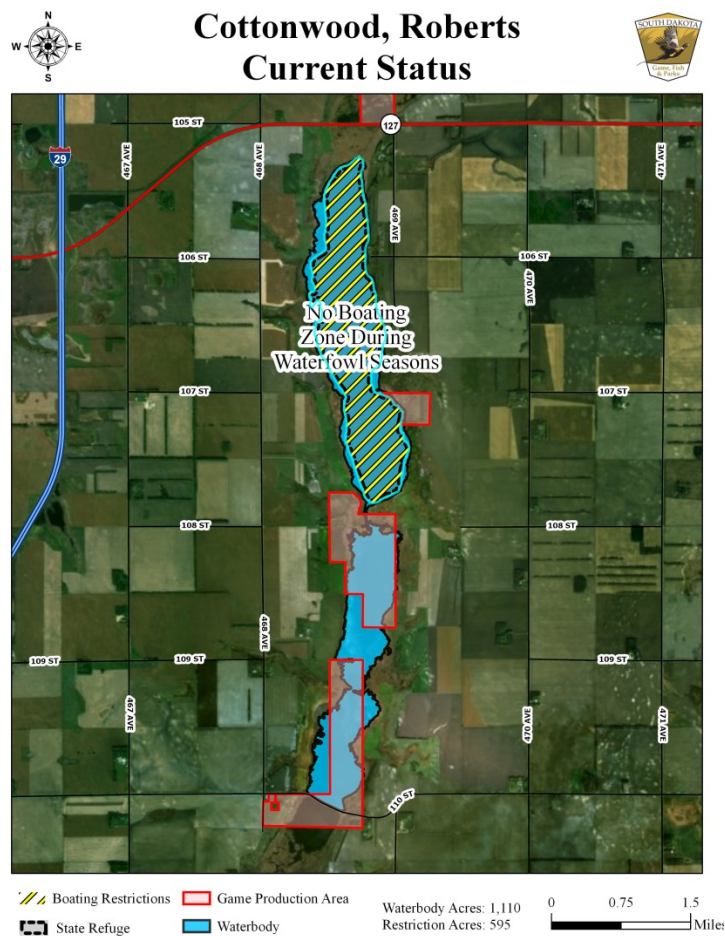
- 8) Change the “no boating zone” during the open season on migratory waterfowl to “electric motors only” from October 20 – December 31.

41:05:02:54. Roberts County refuges. Roberts County refuges are as follows:

The Cottonwood Lake State Waterfowl Refuge comprises all of Cottonwood Lake within the water's edge in sections 20, 28, 29, 32, and 33, township 128 north, range 49 west of the fifth principal meridian, including all islands and bars within the water's edge;

41:04:02:54. Roberts County public water safety zones. Roberts County public water safety zones are as follows:

- (3) The waters of the portions of the Cottonwood Lake Waterfowl Refuge located in sections 20, 28, 29, 32, and 33, township 128 north, range 49 west are a “no boating zone” “electric motors only” during the open season on migratory waterfowl from October 20 – December 31;



DEPARTMENT RECOMMENDATION

Recommended changes from proposal: Modify “electric motors only” to “electric motors zone”

STAFF COMMENTS

- "Electric motors zone," an area which is closed to the use of all motors except any electric-powered motor.

Making this change will simplify rules and allow more recreational opportunity. Retaining the refuge status and allowing only boats with no motors or electric motors will still allow a quiet place for waterfowl to stage.

COMMISSION PROPOSAL

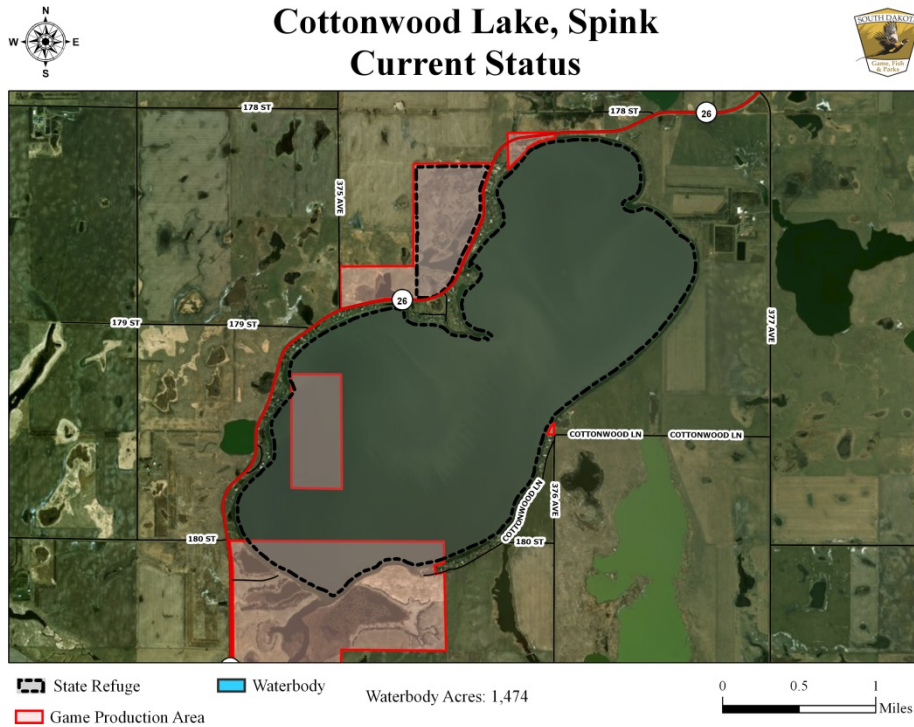
ACTION ITEM #7

Recommended changes from last year:

- 9) Remove the State Waterfowl Refuge status on the Game Production Area located on the south side of Cottonwood Lake

41:05:02:57. Spink County refuges. Spink County refuges are as follows:

The Cottonwood Lake State Waterfowl Refuge comprises the waters of Cottonwood Lake; excluding the area owned by Game, Fish and Parks on the southern portion of Cottonwood Lake.



DEPARTMENT RECOMMENDATION

Recommended changes from proposal: None.

STAFF COMMENTS

Work group recommends removing the waterfowl refuge status on the GPA towards the southern end of the lake. Allowing water hunting will increase hunting opportunities and not affect the staging waterfowl on the rest of the lake.

COMMISSION PROPOSAL

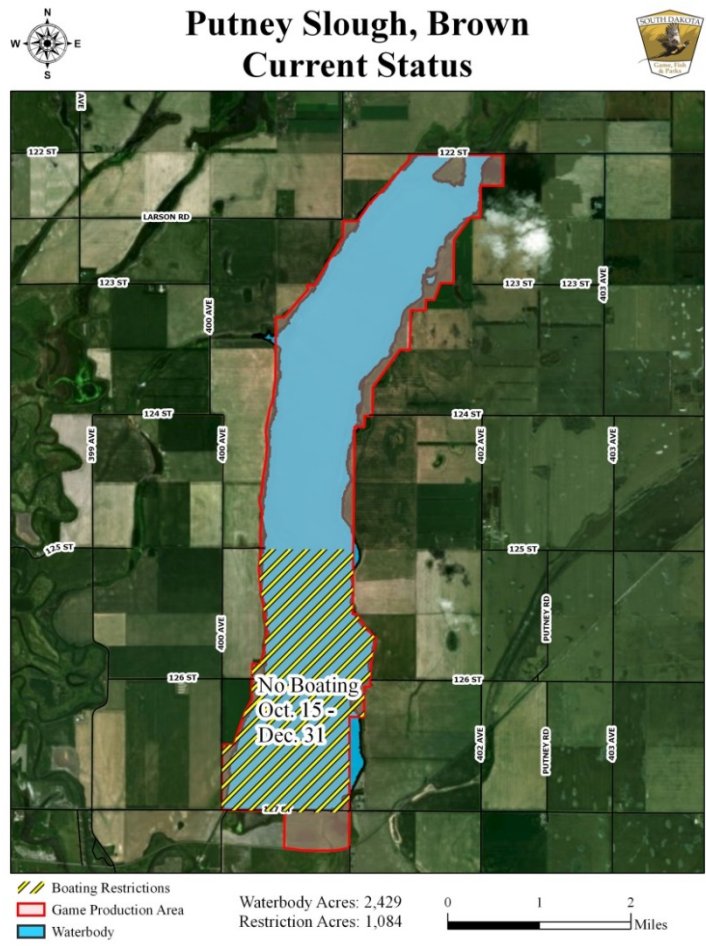
ACTION ITEM #8

Recommended changes from last year:

- 10) Modify the “no boating zone” to “electric motors only” on Putney Slough Game Production Area and change the date from October 15 – December 31 to October 20 – December 31.

41:04:02:06. Brown County public water safety zones. Brown County public water safety zones are as follows:

- (6) The waters of Putney Slough Game Production Area located within Sections 7, 8, 17, and 18, township 124 north, range 61 west are a “no boating zone” “electric motors only” from October 15 20 to December 31, inclusive;



DEPARTMENT RECOMMENDATION

Recommended changes from proposal: Modify “electric motors only” to “electric motors zone”

STAFF COMMENTS

- "Electric motors zone," an area which is closed to the use of all motors except any electric-powered motor.

Making this change will simplify regulations and allow more recreational opportunities for the public. Allowing only boats with no motors or electric motors will still allow a quiet place for waterfowl to stage with minimal disturbance.

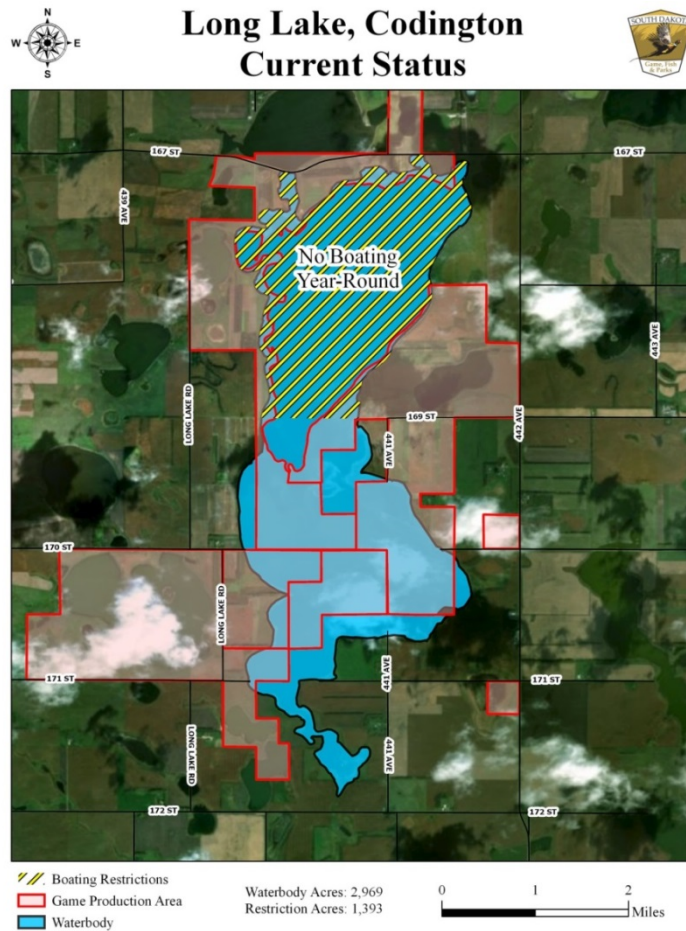
ACTION ITEM #9

Recommended changes from last year:

- 11) Modify the “no boating zone” year round on Long Lake to “electric motors only” from October 20 – December 31.

41:04:02:14. Codington County public water safety zones. Codington County public water safety zones are as follows:

- (2) That portion of Long Lake in sections 11, 12, 13, and 14 of township 117 north, range 55 west, is a “electric motors only” from October 20 – December 31; “~~no boating zone~~” year round;



DEPARTMENT RECOMMENDATION

Recommended changes from proposal: Modify “electric motors only” to “electric motors zone”

STAFF COMMENTS

- "Electric motors zone," an area which is closed to the use of all motors except any electric-powered motor.

This will allow more recreational opportunity, specifically fishing, as the north end of the lake has the most ‘fishable’ water. This area has become a popular fishery close to the city of Watertown. This would also continue to offer an area for staging waterfowl with the electric motors only restriction from October 20th - December 31st. If this area is opened to boating, GFP will develop a modern boat ramp on the NW side of the lake for better public access.

ACTION ITEM #10

Recommended changes from last year:

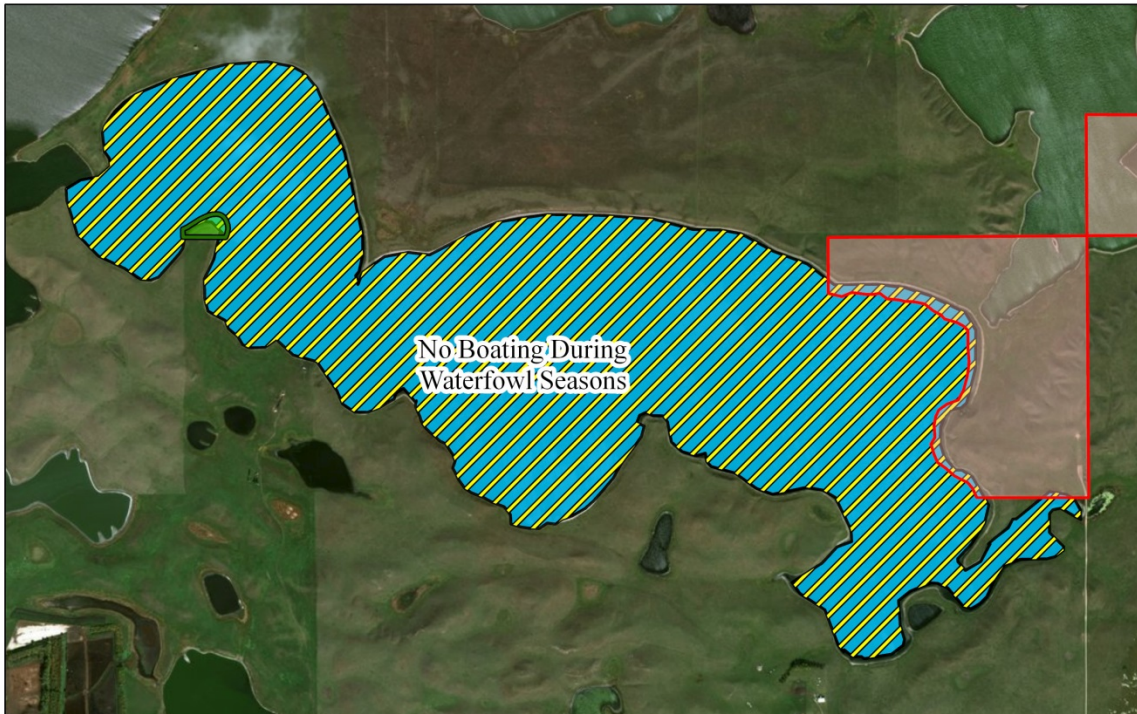
- 12) Modify the “no boating zone” during open season on migratory waterfowl on McKillicans Lake to “electric motors only” from October 20 – December 31.

41:04:02:14. Codington County public water safety zones. Codington County public water safety zones are as follows:

- (3) All of McKiligan Lake is ~~“no boating zone”~~ “electric motors only” from ~~during open season on migratory waterfowl~~ from October 20 – December 31;



McKillicans Lake, Codington Current



Game Production Area Boat Restrictions
Waterbody Waterfowl Production Area

Waterbody Acres: 522

0 0.25 0.5
Miles

DEPARTMENT RECOMMENDATION

Recommended changes from proposal: Modify “electric motors only” to “electric motors zone”

STAFF COMMENTS

- “Electric motors zone,” an area which is closed to the use of all motors except any electric-powered motor.

Implementing this change will add more recreational opportunities for the public, streamline existing regulations and still offer an area for waterfowl to stage.

ACTION ITEM #11

Recommended changes from last year:

- 13) Modify the "no motor zone" during open season on migratory waterfowl on Horseshoe Lake to "electric motors only" from October 20 – December 31.

41:04:02:14. Codington County public water safety zones. Codington County public water safety zones are as follows:

- (4) All of Horseshoe Lake is a ~~"no motors zone"~~ "electric motors only" ~~during open season on migratory waterfowl~~ from October 20 – December 31;



DEPARTMENT RECOMMENDATION

Recommended changes from proposal: Modify "electric motors only" to "electric motors zone"

STAFF COMMENTS

- "Electric motors zone," an area which is closed to the use of all motors except any electric-powered motor.

Implementing this change will add more recreational opportunities for the public, streamline existing regulations and still offer an area for waterfowl to stage.

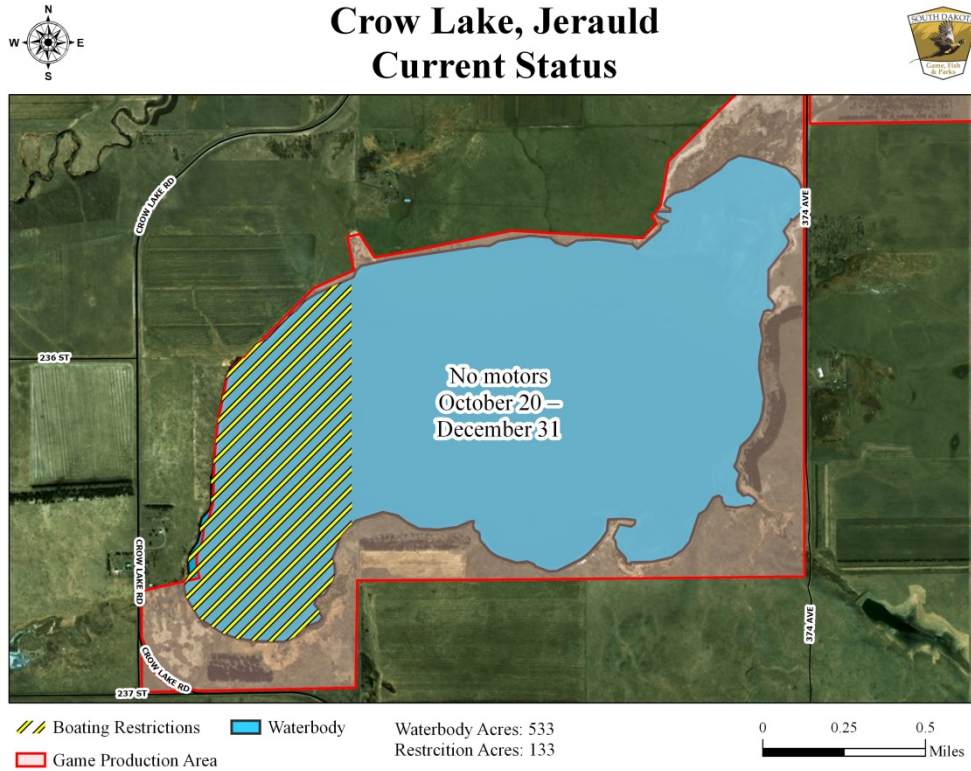
ACTION ITEM #12

Recommended changes from last year:

- 14) Remove the "no motorized boating zone" on Crow Lake from October 20 to December 31

41:04:02:36. Jerauld County public water safety zones.

That portion of Crow Lake in Jerauld County lying west of the north/south section lines between sections 22 and 23 and sections 26 and 27, township 106 north, range 66 west is a "no motorized boating zone" from October 20 to December 31, inclusive.



DEPARTMENT RECOMMENDATION

Recommended changes from proposal: None.

STAFF COMMENTS

Recommend removing restriction to increase recreational opportunities and simplify regulations. Crow Lake is a shallow semi-permanent wetland that periodically goes dry.

COMMISSION PROPOSAL

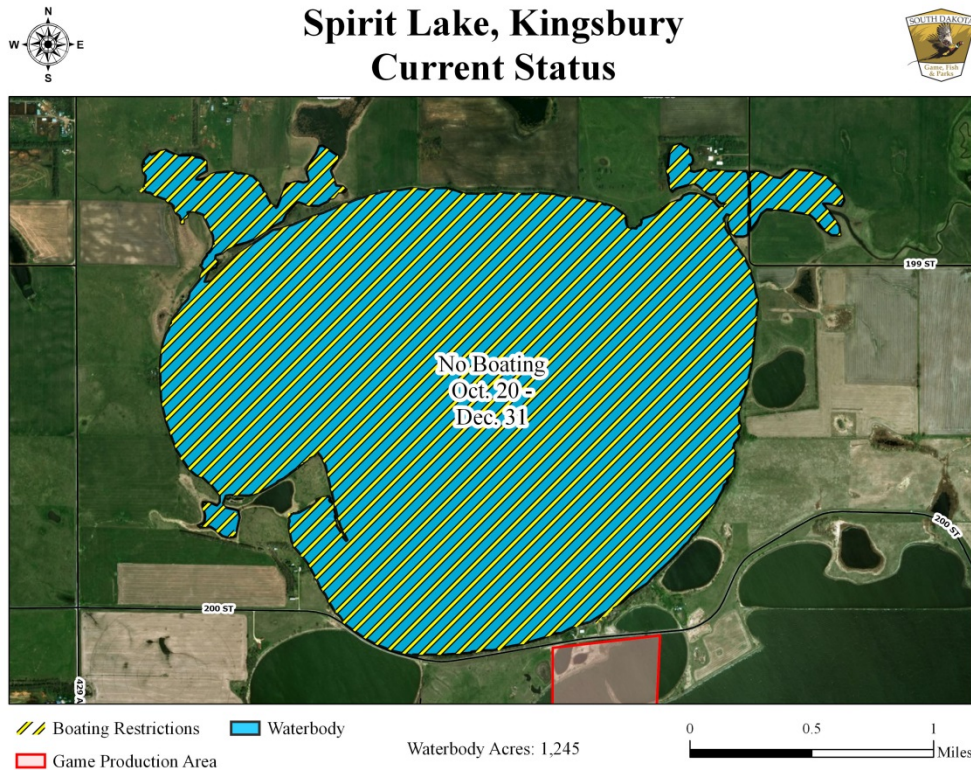
ACTION ITEM #13

Recommended changes from last year:

15) Modify the “no boating zone” on Spirit Lake to “electric motors only” from October 20 to December 31.

41:04:02:38. Kingsbury County public water safety zones. Kingsbury County public water safety zones are as follows:

(1) Spirit Lake is a ~~“no boating zone”~~ “electric motors only” from October 20 to December 31, inclusive;



DEPARTMENT RECOMMENDATION

Recommended changes from proposal: Modify the proposal to remove the “no boating zone” on Spirit Lake from October 20 to December 31.

STAFF COMMENTS

After further discussions with field staff and members of the public, staff would like to remove the Spirit Lake boating restriction because the size of Spirit Lake (>1200 acres) is not conducive to an electric motor zone. Other key criteria to consider:

- 1) Spirit Lake is a very popular fishery (stocked with walleyes in 2011, 2014, 2015 and 2016).
- 2) 88% of Spirit Lake is a meandered basin.
- 3) 4.4% (3,026 acres) of the landscape within a 5 mile radius is covered with water.

COMMISSION PROPOSAL

ACTION ITEM #14

Recommended changes from last year:

16) Remove the “no motors zone” on Milwaukee Lake from October 20 to December 31.

41:04:02:39. Lake County public water safety zones. Lake County public water safety zones are as follows:

~~(3) The meandered portion of Milwaukee Lake located in section 33, township 107 north, range 51 west and section 4, township 106 north, range 51 west is a "no motors zone" for boats from October 20 to December 31, inclusive;~~



DEPARTMENT RECOMMENDATION

Recommended changes from proposal: None.

STAFF COMMENTS

This change will allow more recreational opportunity and simplify regulations.

COMMISSION PROPOSAL

ACTION ITEM #15

Recommended changes from last year:

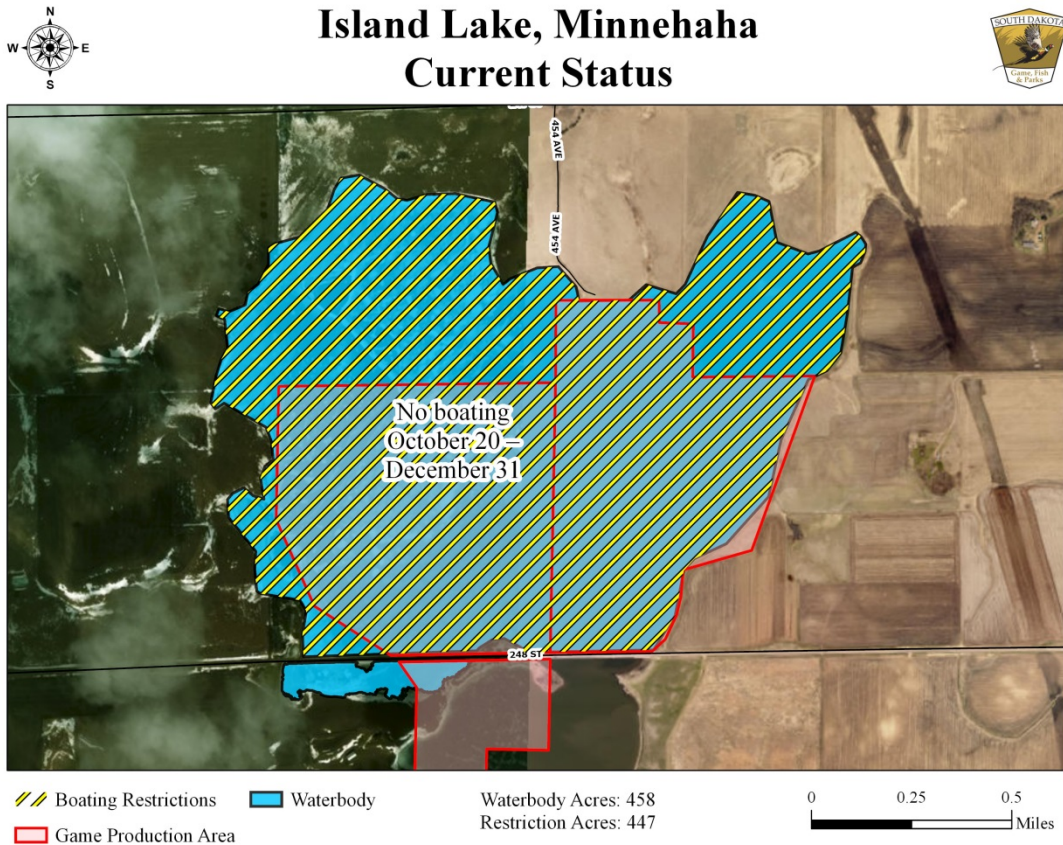
17) Remove the "no boating zone" on Island Lake from October 20 to December 31.

41:04:02:43. McCook County public water safety zones. McCook County public water safety zones are as follows:

~~(2) That portion of Island Lake lying north of McCook County Road 6 is a "no boating zone" from October 20 to December 31, inclusive.~~

41:04:02:49. Minnehaha County public water safety zones. Minnehaha County public water safety zones are as follows:

~~(5) The waters of that portion of Island Lake lying north of Minnehaha County Road 110 are a "no boating zone" from October 20 to December 31, inclusive;~~



DEPARTMENT RECOMMENDATION

Recommended changes from proposal: None.

STAFF COMMENTS

Island Lake is a popular fishery with a diverse fish community. Field staff hear from the public requesting the ability to fish longer into the fall. Clear Lake (472ac) is located 6.5 miles SE of Island Lake which has a similar boating restriction.

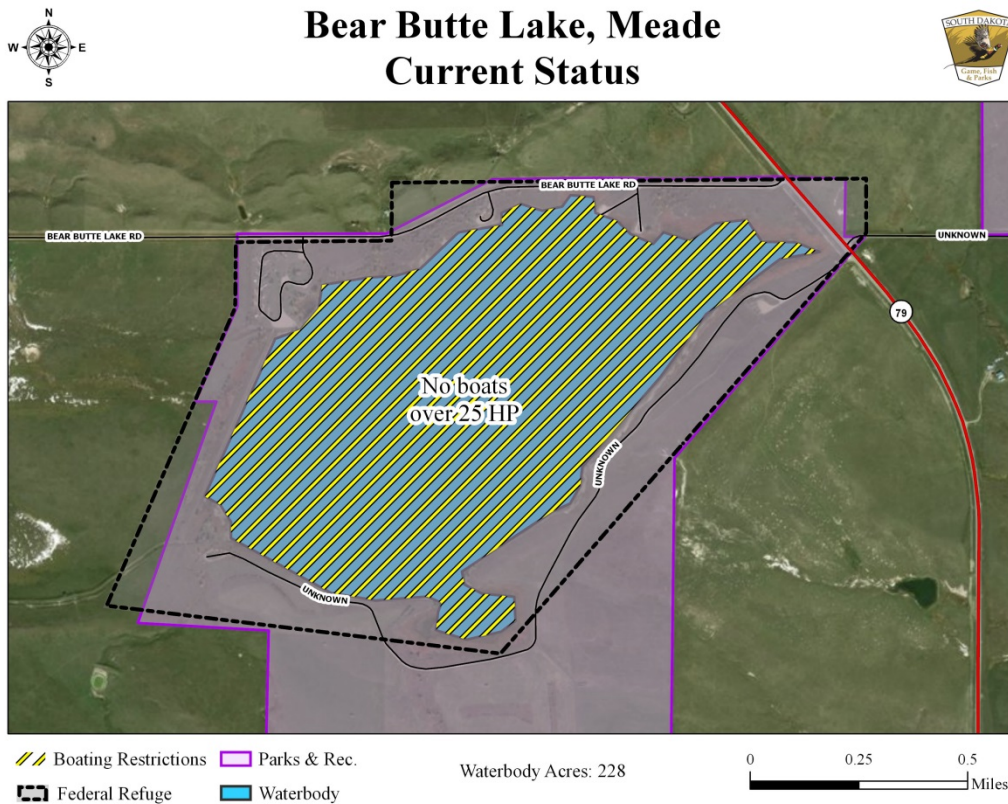
COMMISSION PROPOSAL

ACTION ITEM #16

Recommended changes from last year:

18) Modify the "no motors over 25 h.p. zone" on Bear Butte Lake to a "no wake zone"

41:04:02:46. Meade County public water safety zones. Bear Butte Lake in Meade County is a "no motors over 25 h.p. zone." "no wake zone".



DEPARTMENT RECOMMENDATION

Recommended changes from proposal: None.

STAFF COMMENTS

This will allow more boaters to safely utilize the lake. This would also be more consistent with erosion and safety rules at other state parks.

COMMISSION PROPOSAL

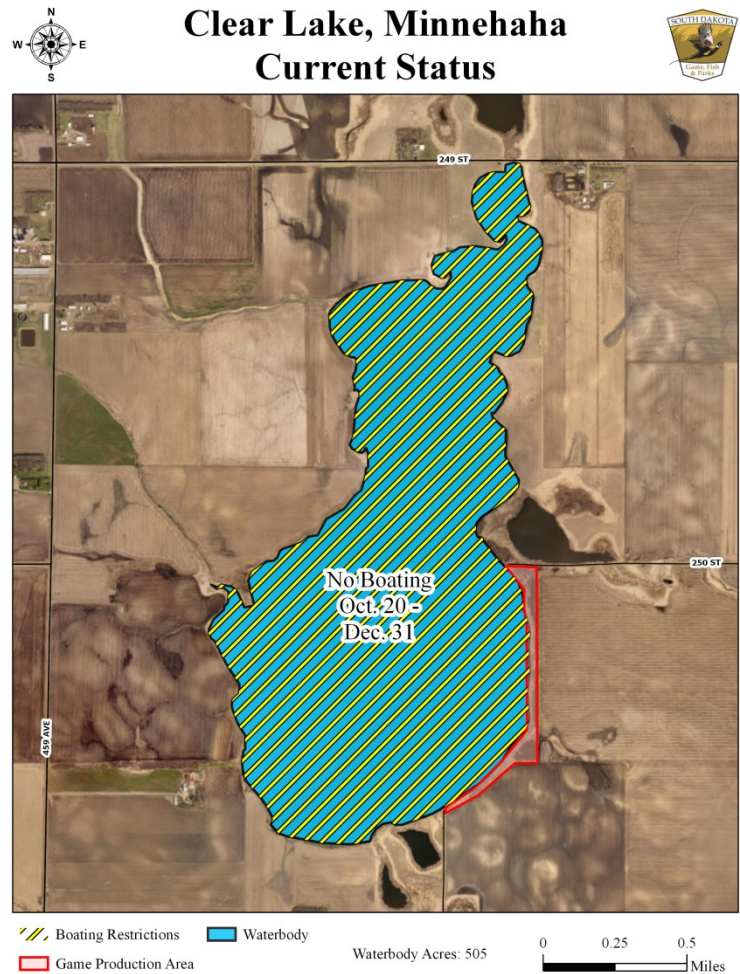
ACTION ITEM #17

Recommended changes from last year:

19) Modify the “no boating zone” on Clear Lake to “electric motors only” from October 20 to December 31.

41:04:02:49. Minnehaha County public water safety zones. Minnehaha County public water safety zones are as follows:

(2) Clear Lake is a ~~“no boating zone”~~ “electric motors only” from October 20 to December 31, inclusive;



DEPARTMENT RECOMMENDATION

Recommended changes from proposal: Modify “electric motors only” to “electric motors zone”

STAFF COMMENTS

- "Electric motors zone," an area which is closed to the use of all motors except any electric-powered motor.

This would allow for some limited fall fishing opportunity, limited water hunting opportunity, while still allowing staging waterfowl opportunities.

ACTION ITEM #18

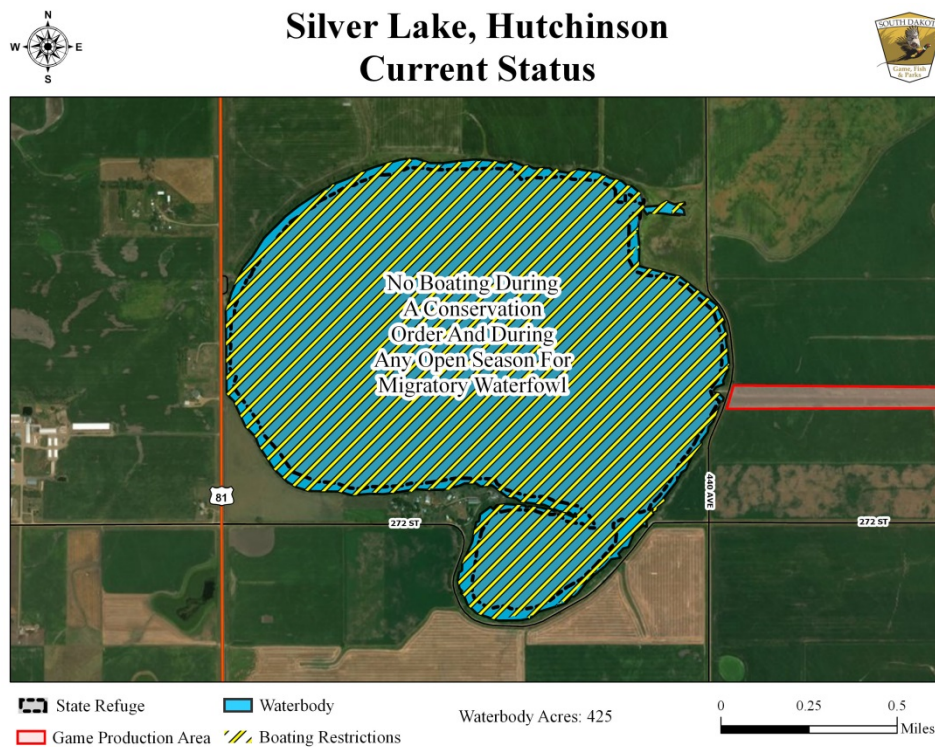
Recommended changes from last year:

- 20) Remove the “no boating zone” on Silver Lake during a Conservation Order (spring taking of light geese) as well as during the regular open season on migratory waterfowl

41:05:02:33. Hutchinson County refuges. The following refuge is in Hutchinson County: the Silver Lake Waterfowl Refuge comprises all of Silver Lake below the high-water mark including all islands and bars lying within the high-water mark.

41:04:02:33. Hutchinson County public water safety zones. Hutchinson County public water safety zones are as follows:

- (1) ~~Silver Lake is a "no boating zone" during a Conservation Order (spring taking of light geese) as well as during the regular open season on migratory waterfowl;~~



DEPARTMENT RECOMMENDATION

Recommended changes from proposal: Reject the Silver Lake Commission Proposal

STAFF COMMENTS

Staff would like to retain the refuge status and the “no boating zone” restriction because water is a limited resource in the area (<100 acres within a 5 mile radius), and as a result, limited waterfowl staging opportunities exist in this area.

COMMISSION PROPOSAL

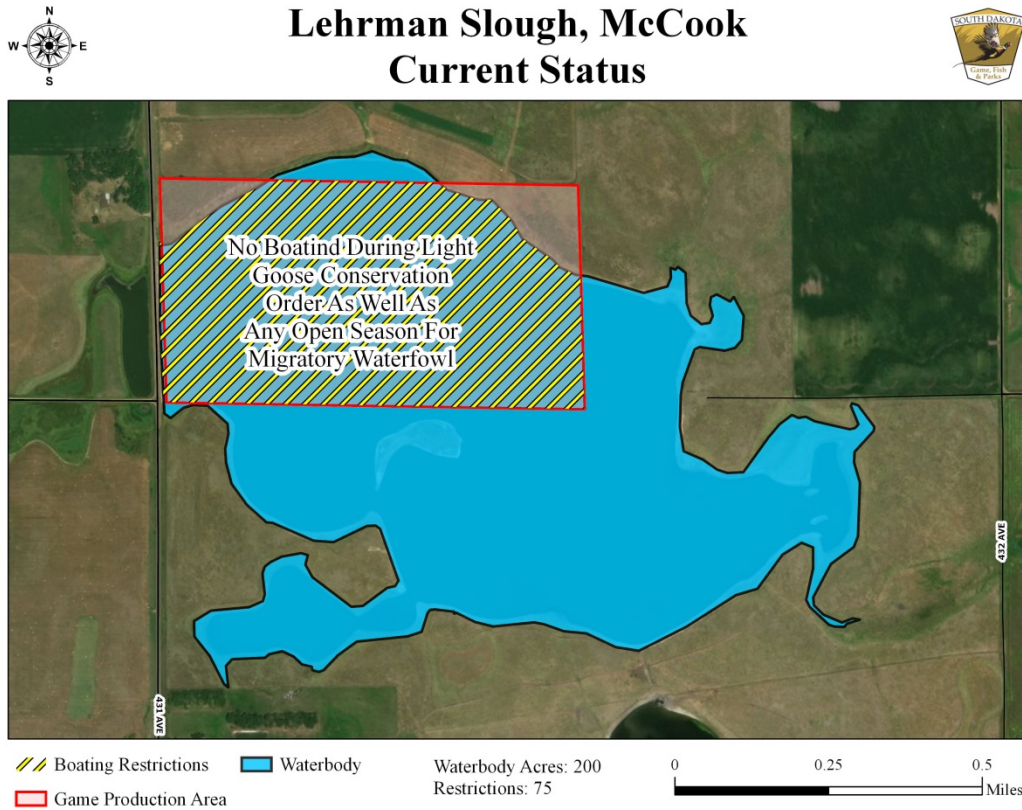
ACTION ITEM #19

Recommended changes from last year:

- 21) Modify the "no boating zone" during a Conservation Order and during any open season for migratory waterfowl on Lehrman Game Production Area to "electric motors only" from October 20 – December 31.

41:04:02:43. McCook County public water safety zones. McCook County public water safety zones are as follows:

(4) The waters of Lehrman Game Production Area in section 32, township 103 north, range 56 west are a "no boating zone" "electric motors only" during a Conservation Order and during any open season for migratory waterfowl, from October 20 – December 31 inclusive.



DEPARTMENT RECOMMENDATION

Recommended changes from proposal: Reject the Lehrman Slough Commission Proposal

STAFF COMMENTS

An agreement has been made with the adjacent landowners to allow public access across a portion of their private property to access the landlocked portion of public land in the northeast corner of the game production area.

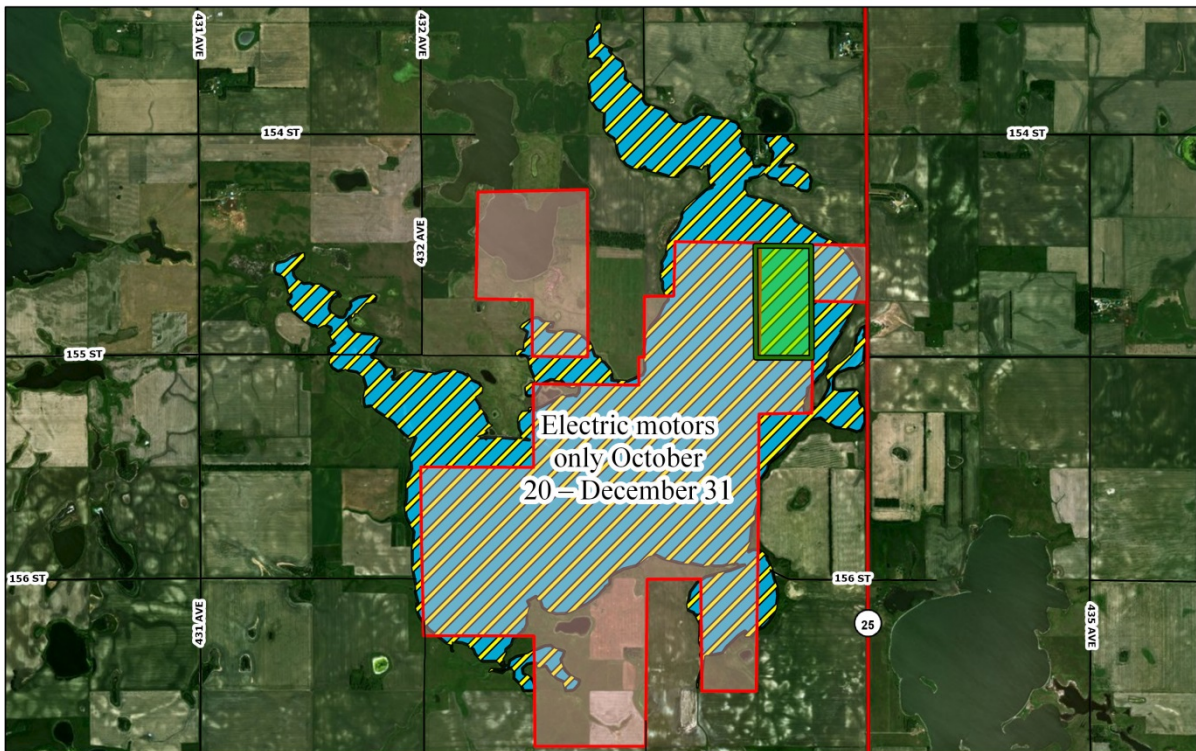
ACTION ITEM #20

Recommended changes from last year:

22) Add “electric motors only” zone on Swan Lake in Clark County from October 20 – December 31.

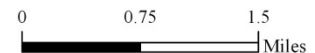


Swan Lake, Clark Proposed



- Boat Restrictions
- Game Production Area
- Waterfowl Production Area
- Waterbody

Waterbody Acres: 1,795



DEPARTMENT RECOMMENDATIONS

Reject the Swan Lake Commission proposal.

STAFF COMMENTS

This change would limit recreational opportunities and contradicts information outlined in the criteria document used to justify the elimination and/or modification of other boating restrictions and refuges. Key criteria to consider:

- 1) 13.1% (10,390 acres) of the landscape is covered with water within a 5-mile radius
- 2) 66% of the Swan Lake basin is publicly owned
- 3) Swan Lake has been stocked with walleye about every other year since 1998 and has been a very popular fishery for the past 20 years.

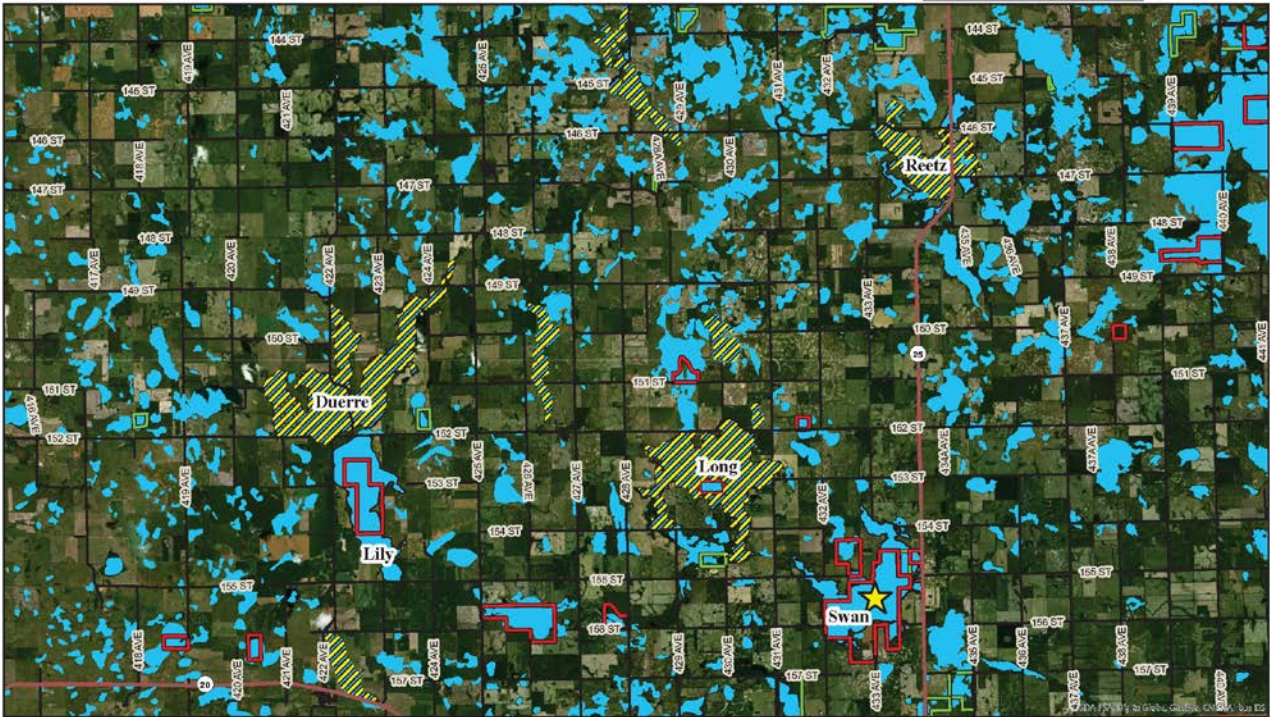
- 4) Swan Lake is a section-8 lake and the landowners that own flooded property may petition the commission to close their flooded property to recreational use.
- 5) Swan Lake is in close proximity (<10 miles) to numerous nonmeandered water closures and injunction lake closures. These closure areas already provide ample undisturbed staging areas for waterfowl because of the very limited recreational opportunities.



- Waterbodies
- Game Production Areas
- Waterfowl Production Areas
- Closures

Swan Lake Proximity to Injunction Waterbodies

Waterbody	Miles
Reetz	5.82
Long	0.74
Duerre	8.51
Jesse	7.83



Public Hearing Minutes of the Game, Fish and Parks Commission
July 11, 2018

The Public Hearing Officer Scott Simpson began the public hearing at 10:03 a.m. at the Ramkota Hotel and Convention Center in Pierre, South Dakota. Commissioners Barry Jensen, Gary Jensen, Mary Anne Boyd, Jon Locken, Cathy Petersen, Scott Phillips, Russell Olson and Douglas Sharp were present. Chairman B Jensen indicated written comments were provided to the Commissioners prior to this time and will be reflected in the Public Hearing Minutes. Simpson then invited the public to come forward with oral testimony. A second public hearing was held on July 11, 2018 beginning at 1:56 p.m. and concluding at 2:00 p.m. as no comments were received.

Firewood Restriction

No verbal comments

Tony Voeltz

Marion SD

tvoeltz@goldenwest.net

Why can't we bring other types of wood such as cottonwood, elm, applewood that is not affected by the bug?

Fall Turkey

No verbal comments

Douglas Leighton

Bruce SD

dogleighton@dakotahgold.com

is this a one year proposal? what happens when we get back into a dry cycle and water levels recede

Berdette Zastrow

Grenville SD

bzastrow@venturecomm.net

I hunt Roberts County turkeys and there are enough turkeys to support a fall season in the ENTIRE COUNTY. Please vote yes on the proposal to open ALL OF ROBERTS COUNTY to fall hunting.

Harry Mitchell

Hot Springs SD

wanesharose1@gmail.com

if you need to quit turkey tags in pennington and Lawrence counties, please don't reduce black hills tags by 200 or at all. we have a lot of turkey in southern hills, but now we will have all northern hunters down here , and that will make it less chance of hunters here getting tags. thank you.

Archery Equipment Restriction

Ron Kolbeck, SDHEIA, Salem, SD, if you take away both the education requirements and equipment restrictions this will give no guidance from the commission to the bow hunters should be utilizing in the field. #3 arrow rests that have more than 3 inches touching the arrow understands this is a way to get around auto load bows system in which the bow automatically loaded the next arrow into the bow and this was a way to get around that. Electronic devices deals with devices for the taking of game not recording of the hunt. Devices that measure the distance to the target that will automatically set your sight pin to

that distance will encourage people to take longer shots. Doesn't see this as a restriction. These are not used often and do not have a need in hunting. #6 Compound bows with let off of more than 80 percent was to keep up with Pope & Young and their ethics committee and they continue to maintain this and he recommend this as well. Compound bow shorter than 28 inches measuring top to bottom this is a concerns because the industry measures axle to axle he doesn't have a problem with this one being removed because of the way it is being measured today. Telescopic sights similar to scope on a gun by magnifying the target. They are mainly used in target competition where people are shooting up to 100 yards in distance. We don't want to promote people taking 100 yard shots in a hunting situation there are just too many variables that make it unethical and increase the likelihood of wounded game. Arrow including attached broad head wing weighing less than 275 grains when hunting big game animal go with poundage listed below is really a matter of having the proper penetration Need weight to carry arrow through animal. Need to have the two in conjunction to really be effective. An arrow that is less than 26 inches longs measured from the knock to the end of the shaft along with the length of the bow restrictions and education we had people shooting bow's out of vehicles. This was a restriction to help stop people from shooting from a vehicle with a bow is why this was put into place.. Arrow board head we need to have that. poundage we currently have now with the difference between mechanical board head and fixed wing broad head every state has done this differently and we have done this different for elk and deer I think that is important that we keep that in mind because quite honestly at 40 pounds most mechanical broad heads are not going to preform appropriately. Those state that have different poundage for elk have went to 50 pounds not 40 pounds required for elk. The other big difference is if you are shooting a long bow or a compound bow. No change there as well..

Jim Twamley, SDBI, Parker, SD, personal response concern is bow hunter since early 80's harvesting variety of animals. Was an original bow hunter education instructor, master trainer and finally state coordinator and president of SDBI. During time as president worked on list of requirements to provide ethical and safe harvest without impairing hunters by restricting accessibility. Proposed changes go against ethical pursuit and harvest of big game animals in South Dakota. Removal of education took away learning curve away from the new bow hunters coming into the sport. That program dealt in depth with shot placement and ethical shots. Safe and practiced way of harvesting an animal and where is the vital on an animal and what do you have to do to get that animal to die quickly after an arrow shot. This process during bow hunter education is what we spent three to four hours on every class. What is a legal broad head and lots of discussion on this and harvesting an animal Since the national bow hunter education database inception through last year South Dakota averaged around 900 new bow hunters a year. If they took the course he figured they became a bow hunter. I don't see where the current restrictions we have in place limited anyone from becoming a bow hunter. Bows now days you purchase go from 22 inch draw length up to 30 inch draw length. It goes from 30 lbs to 70 lbs saying designing a bow you are preventing someone from getting into it. They can buy a bow and all the manufactures have that range. We have to limit in his opinion the draw weight and implement selection used to cleaning, safely and humanely harvest a big game animal.

Dana Rogers, Secretary SDBI, Hill City, SD, difficult to understand things by mathematics, kinetic energy, weapons. We have minimum calibers for hunting big game with bow hunting it has to be blood loss. Concern with lighter arrow shaft example instead of throwing a baseball your throwing a wadded up piece of paper with a 40 lb. draw weight and lighter/shorter shaft the law currently stipulates for big game for using expandable

broad head. If all of these past people would be allowed to do this on a big game animal that it would not work on, it would just not penetrate. The wording of big game is critical. Open to quite a few of the changes. AMO (archery manufacture organization) sent all this info out to the states to request these changes We can't bait in South Dakota but you can go into Cabela's/Scheels and buy any manner of mineral salt. Just because legal to sell not legal to use. When you get a speeding ticket the officer has discursion. He doesn't have to write a speeding ticket. These are discursionary starting points in our opinion. That is not making someone an illegal person or criminal but it is an ethical starting point when talking about kinetic energy when talking about getting the shaft to enter an animal and do what it is supposed to do. Do we want to give people more opportunity to take shots they are not really capable of doing with that electronic sight or telescopic sight. Even more dangerously do we want to put a weapon in the hands of someone that is really not capable of doing a job on that large animal because of not having bow hunter education anymore?

Jim Twamley, SDBI, provided broad heads they are legal for use in South Dakota. The original design said to be metal construction with two cutting blades. With the new definition they are plastic with expandable blades. Unfortunately our big game regulations apply from everything from a turkey to an elk. That is why we feel the definition of a broad head and arrow and draw weight of the bow need to be larger in order to cleanly ethically, humanly harvest the game we are pursuing.

Jake Leike, Garden City, SD, mainly he would like to address minimum arrow and draw weight. Doesn't think it is a good idea to remove these. Can cause a significant increase in wounding and not recovering animals due to penetration abilities of the arrow. Talked about calculating kinetic energy and amount of foot pounds to harvest animals. With current GFP minimums bow hunters are not producing enough kinetic energy to kill medium/large game. Lowing draw weight and arrow weight minimums will be detrimental to the aiding of overall recovery of big game animals.

Trent Koistinen
Marion, SD
Thanks for the September 1st Archery opener.

Dana Rogers
Hill City SD
dana.rogers.1@hotmail.com

As a lifelong South Dakota Bowhunter, International Bowhunters Education Federation Instructor and Pope and Young Club member, I oppose the vast majority of changes proposed to our archery equipment recommendations. Electronics on the bow that aid in the taking of game such as a range finding sight allow way too much technology and 'could' lead to people taking longer shots than they are capable of. Allowing telescopic sights on a bow the same. Elk are a VERY large and tough big game animal and allowing a slight draw weight bow to use an expandable that REQUIRES more Kinetic Energy to open and penetrate is a dangerous and ethical challenge. The arrow weight grain, arrow length, draw let-Off and axle to axle length are iffy topics with all the new technology being created but we need to have minimum standards to keep archery seasons as 'primitive' and short range as possible. Just because the Archery Trade Association (manufacturers) can produce something to sell, does NOT mean we should make sweeping changes. I'm very concerned about allowing too many technological advances in the aiding of taking game as I really enjoy our seasons and opportunities and I would hate to see the success

rates jump too high due to ease of use/harvest and thus possibly lose opportunities in the future during our archery seasons.

Anthony Filholm
Brookings SD
anthonyfilholm@hotmail.com

Most of the equipment changes are understandable but there a couple I take issue with. The most notable is the allowance of mechanical broadheads for taking elk or deer with lower poundage bows. I do not mean to educate you but mechanical broadheads require more kinetic energy to work consistently. They need to be driven faster with more power. I suggest not allowing their use with any bow that draws less than 50 lbs. It is more an energy question than which species you use them on. Use of electronic gear attached will lead to people using laser range finding auto aiming sights that will lead to more long range shots being attempted with an increase in wounding losses. Archery is supposed to be about how close you can get to your game, not how far you can shoot it at. Please reconsider these two items. Thanks for your time.

Bill Antonides
Aberdeen SD
billantonides@abe.midco.net

I can go along with the proposed changes for archery seasons but would like to make a point: Archery hunting should stop during the regular rifle seasons. If it continues to be allowed, archers should also wear orange. Frankly, I think this past loosening of rules is foolish and begs for the less ethical among us to break the rules. It was a mistake to allow archery hunting during the rifle season in the first place, and it is time to fix it.

Kevin Morgan
Spearfish SD
doc_nagrom@yahoo.com

I support the proposed changes. Archery equipment continues to evolve and regulations need to adjust.

Jim Dahlberg
Hot Springs SD
broadheadshovel@yahoo.com

Having archery hunted in SD since 1964 and been involved with some of these equipment restriction proposals, I want to explain why they were instituted. 3" rests was put in place because of a device that started to be manufactured that had a trough attached to the bow allowing a "dart" 6 - 8 inches to be shot instead of an arrow. 28" bow length restriction was put in place to keep devices that looked like slingshots from being used as archery equipment. 275 grain arrow weight is necessary to assure proper penetration when shot into big game animals. The 26" arrow shaft is also to assure proper weight for penetration. Please keep in mind that archery hunting equipment restrictions in SD have always been RECOMMENDATIONS to archery hunters for equipment that should be used to hunt big game animals in SD. Having archery hunted 54 years in SD, I have never had my archery equipment inspected by officials to assure that those published restrictions were being followed to the letter. All of the existing restrictions have been endorsed and lobbied for by experienced archery hunters belonging to South Dakota Bowhunter's Incorporated. Please keep these recommendations for archery equipment in place. Thank-you. Jim Dahlberg

Roy Oberle
Mellette SD
coberle@nvc.net

I have been a bowhunter in this state since 1974 and have been actively involved in several bow hunting organizations over the years. I am opposed to the currently proposed archery equipment proposal. The restrictions currently in place on equipment were well thought out when implemented for various reasons. I would suggest the department review the Pope & Young Club's current equipment restrictions for guidance to proper bow hunting equipment. I hope the department isn't, "selling out" to the AMO, Archery Manufactures Organization, in considering this proposal. Thank you for your time and consideration of this matter.

Refuge and Boating Restrictions

Roger Hatling, Pierre, SD, concerns with Swan Lake as 80 percent is owned by the state as a WPA and to close during hunting season is not good. Working to bring in the youth then we close the WPA. Needs to be left open for boating and for gas and electric trolling motors. To navigate water like that with a trolling motor it is dangerous. Recommend only closing private area.

George Vandell, SD Waterfowl Association president, Pierre, SD, comments are general in nature and applaud the commission for taking a look at this issue. Refuges have a tendency to separate a public resource to public land/access leaving you with difficult decisions. Will point out that the dept. is looking to find additional public access working with dept. to find locations with minimal work could provide better access for GPA or WPA. Swan Lake action sheet shows a tremendous area for waterfowl refuge. NM waters identified over 600,000 acres that can provide resting areas for waterfowl. 250,000 acres are currently open to the public but could be closed. Landowners can choose to provide nesting area. Waterfowl don't leave South Dakota because of hunting pressure. Hunted the state his whole life. Waterfowl leave when the weather is bad but do not leave because there is not a resting area. They move from one resting area to another. Whitewood was his favorite place to duck hunt as a kid. Whitewood Lake would see an astounding number of ducks before it was turned into a refuge in the 1970's for snow geese. Recommends removing the refuge status from Whitewood. Valid attempt to use electric motors the thought is kind, but questions the safety. Outboard motors are an ideal and safe way to recreate and are more and more quiet. Have bailed people out with electric motors as they do not have the horsepower and thrust to navigate waters safely when the wind comes up.

John Simpson, Pierre, SD I happen to be a waterfowl hunter for a long time (65 years) Swan Lake proposal. To simplify administrative rule and amplify opportunity except for Swan Lake it talks about reducing waterfowl disturbance. 35 years on the Missouri River waterfowl refuges and dislikes waterfowl refuges they don't perform their intended result and they limit public opportunity. In reality they benefit adjacent landowners and not the public or the resource. Opposes Swan Lake Refuge proposal.

Chris Hesla, SDWF, exec director, opposed to Swan Lake Refuge because non-meandered has been a fight! Swan Lake is not doing anything wrong. The landowners need the roads open to move equipment and safety issues with ambulances getting in

there. Swan Lake is a fine example of public waters and private being needed great public boat ramp there that doesn't block any of the road way for use to public water. Urge not to apply any restrictions to this lake as it is a prime example of local interest and public interest working together and we need more of those.

Charlie Rokusek, 29/90 Sportsman Club, Sioux Falls, SD, Lardal Slough Hanson/ McCook County area and Silver Lake Hutchinson County. Our club met last night and support existing regulation on these lakes as they provide an area for nesting. Grew up on farm SW of Silver Lake and it provided hunting opportunities and is again after several years.

John Heylens Volga SD

Comment:Please keep the East Oakwood as a refuge as West Oakwood can be fished and the migrating and local birds need a resting point in our area. People can fish from shore if they would like. There is plenty of lake access.

Jim Gruber Estelline SDjgruber148@yahoo.com

Comment:i can only ask why? waterfowl will fly from the sight of a boat with or without an electric or gas operated boat.. most duck boats are large and require a gas motor to get to their hunting spots. little is gained by this proposal except that less people will be on the lake simply because they want to avoid the hassle and the expense . bad proposal.

Stephen Gehring Watertown SD SHGEHRING@GMAIL.COM

Comment:Two comments:

I strongly oppose the electric motors only on Swan Lake. This is a popular fishing lake large enough for big boats.. The last few years the winters have come late.

On Horseshoe Lake in Codington County a better restriction would be to limit motorized boating to the area around the public hunting peninsula and island. I doubt the safety of an electric motor on a windy day.- at least not my motor.

Thank you for your consideration

Stephen Gehring Watertown SD SHGEHRING@GMAIL.COM

Comment:I did not make clear that gasoline motors should be allowed on Horseshoe Lake in Codington County but should be restricted to the access and around the pubic hunting peninsula/island.A few years ago a hunter was almost drowned at Waubay NR where a small craft was mandated

Suzan Nolan Rapid City SD kensuz49@gmail.com

Comment: Bear Butte is at the foot of a sacred mountain. It's a small lake used for fishing boats. I heartily oppose boats larger than small fishing boats that do not leave a wake used on this small and serene lake

Jim Gruber Estelline SD jgruber148@yahoo.com

Comment: the more i read on this the worse it seems.. 1-where did this electric motor only proposal come from/why/purpose/ 2-this whole thing has been a ploy by some wealthy and influential land owners to create their own private shooting area at the expense of the small time hunter and fisherman. it has been opposed by 90% of all involved, yet for some

reason it keeps reappearing.. cant we ever leave well enough alone? pheasants are gone, waterfowl will be next.....

Clint Oedekoven Sturgis SD Coedekoven

Comment: I would like to see 25 horse motor restriction stay in place.

Justin Allen Pierre SD

Comment: I'm totally against any type of boating/motor restriction on Swan Lake. I live in Pierre now but moved from Florence so I know the area extremely well. The couple landowners pushing this move want nothing but better hunting for themselves and the folks they guide on said land. I find it tough to believe they care about anyone else. A large portion of the lake is public and this boating restriction will make waterfowl hunting hard to access. IMO this move is another land grab that only further commercializes waterfowl hunting in SD. Don't get me wrong waterfowl refuges are great in certain areas but not on a body of water that is largely public land under and surrounding the lake. Please leave Swan Lake as is.

Terry Amy Watertown SD tja19@abe.midco.net

Comment: I strongly oppose the proposal for Swan Lake. The only reason this is even being considered is because of wealthy landowners on the north side of the lake that want to improve hunting on their land. With the GFP losing access to many lakes we need to be looking at providing more opportunities for hunting and fishing, not limiting them. With the climate change, the main migration is not here until late November anyway. This is a great fall walleye fishing lake, lets leave it that way. Don't take away opportunities for average sportsman to appease wealth special interest.

Jeffrey Liudahl Pierre SD

Comment: Dear Commissioners: I'm writing to comment on the proposal to limit boating on Swan Lake in Clark County, South Dakota to electric motors only from Oct. 20 - December 31. As you recall, this matter was discussed last year and then tabled for consideration in June 2018. Public sentiment was approximately 95% opposed to the proposal of not allowing boating on Swan Lake from Oct. 20 - Dec. 31. What has changed?? Adding a little twist to the proposal by allowing electric motors changes nothing! How is a diver hunter such as myself, going to use an electric motor to travel the distance required to hunt, and then return to the boat landing in inclement weather and wind? This presents a liability issue along with obvious safety concerns. Reliable sources tell me that commissioner Doug Sharp from Watertown resurrected This proposal in spite of strong opposition. Please review and study the duties of a game commissioner. Representing all sportsmen, not just a privileged few should be the goal at all times. This proposal stinks to high Heaven! My hope is that the game commission will see that it fails. Thank you very much.

Marty Mack Watertown SD Macklandsurveying@gmail.com

Comment: I believe that you will be putting people at risk by allowing only electric motors during hunting season. Most of the good waterfowl hunting is during times of adverse weather. By allowing only electric motors people may be in danger of not getting back to there starting point or worse yet capsizing their boat. There were 2 young men who died near Brookings and it would be a tragedy if anything like this happened again

Nate Anderson Webster SD

Comment:I'm opposed to any type of motor/boating restriction on Swan Lake in Clark Co. This again is another push by SD GFP commission to commercialize waterfowl hunting in SD. Just last year a petition was submitted by M&E Land Co of Watertown to close the lake in fall. You received tons of comments against the move. Now Mr. Sharpe of Watertown has proposed basically the same thing. Personal agenda? Read the comments from last year if you want to know how everyone feels about a motor/boating closure/restriction on Swan Lake. Leave the lake as is and vote against the Swan Lake proposal

David Hegg Watertown SD dhegg@wat.midco.net

Comment:This concerns a proposal that will be considered at the July Game, Fish, and Parks Commission meeting regarding the use of motorized boats on certain lakes during the waterfowl season in South Dakota. The lakes in Codington County included in this proposal are...McKilligan Lake, Long Lake, and Horseshoe Lake. The proposal would allow the use of boats with "electric motors" to operate on the permitted lakes during the waterfowl season. I am adamantly opposed to this measure.

It is a well known fact the aforementioned lakes have served as a resting place for significant numbers of migrating birds each fall for many years. The result of this has been that many hunters have benefited from having waterfowl to hunt in a large area of NW Codington County. As the birds move back and forth each day to feed in area fields or to transit to other bodys of water, many hunters realize the benefit of having access to the birds to hunt they wouldn't otherwise have. I say this because if the birds are continually harassed and chased off those lakes, the result will be far fewer birds held in this area to hunt for everyone. They will simply move elsewhere to rest. As it is now, many hunters hunt over decoys in area fields or simply enjoy pass shooting in area road ditches. Hunting as we currently know it will most definitely change if this passes.

In some years, the numbers of migrating ducks and geese arrive in large numbers and hold on these lakes until weather finally drives them out. My fear with this proposal is that the boats will accomplish what nature does but much sooner. The result of that will be fewer birds available to hunt and for a much shorter duration. If GF&P staff didn't believe that boat traffic will disturb the birds, why does GF&P ban boating on most of Long Lake (a decent walleye fishery) in the spring and summer. Their publicly stated reason is so that nesting waterfowl are not disturbed. Nesting vs resting, there isn't much difference.

While I am a staunch proponent of public access, I am convinced this proposal will do more harm to the public's access to the waterfowl than help. I have personally seen what motorized boats can do to the resting waterfowl on Horseshoe Lake. They drive the off birds in mass numbers and if accomplished daily, will result in far fewer birds available to everyone. With electric motors as powerful and efficient as they now are, every corner of these large lakes will be quite easily accessed. The birds will be around for a couple of days - then they will leave and we all lose.

I'm opposed to the proposal to impose a restriction on motors/boating on swan lake in the fall. This nothing but a push by a couple landowners to better their hunting on dry fields around the lake. I'm sure the same that submitted the petition last year. The lake is mostly public and a great fall fishery. The restriction only hurts the vast majority of the users and only benefits a couple landowners. There is plenty of other roost water in the area that is closed to the public or has very limited access. I'm not sure who ever proposed this idea is really concerned about roost water or maybe just concerned about a couple landowners. Leave the lake alone.

Jean Douglas Austin Watertown SD doug@austin-hinderaker.com

Comment: Duck population in this area has been done for a number of years. Ducks and geese need a resting place where they are not harassed. Keeping a restriction on motorized boats in effect should benefit a number of hunters in the general area.

Roger Hatling Pierre SD

Comment: I've hunted in this state for 53 years. Closing this lake to boating with electric motors only in the fall not only makes it almost impossible, it makes it dangerous. At the June meeting one of your own people explained a new plan for the recruitment, retention and reactivation, closing this lake to electric motors during the peak of the migration of waterfowl is basically telling them you don't care. This WPA was paid for by sportsmen and women and should be left open. 80% of the water & the land below belong to us. If the two people in question are worried about trespassing they can post their part of the lake. As far as resting areas for waterfowl. There are many lakes & sloughs within a few miles of this lake. In closing this petition should not be passed. The SD GFP Commission is supposed to represent all sportsman and women.

Robert Rousseau Watertown, Sd 57201 SD rousseau@wat.midco.net

Comment: RE THE PROPOSAL TO EASE BOATING RESTRICTIONS ON HORSESHOE, LONG AND OTHER AREA LAKES IN CODINGTON COUNTY, I WOULD URGE YOU TO TABLE THIS PROPOSAL. THESE LAKES HAVE BEEN WATERFOWL SANCTUARIES FOREVER AND SHOULD CONTINUE TO BE TREATED AS SUCH. I WITNESSED THE EFFECT OF BOATS ON HORSESHOE LAKE SEVERAL YEARS AGO ON THE OPENING DAY OF DUCK SEASON. IT TOOK ONLY A COUPLE HOURS FOR THE BOATS TO CHASE ALL WATERFOWL OFF THE LAKE WHICH, NEEDLESS TO SAY, HAD A PROFOUND IMPACT ON THE HUNTING FOR A COUPLE DAYS FOLLOWING. THIS PROPOSAL TO ALLOW BOATS, EVEN WITH ELECTRIC MOTORS ONLY, IS A BAD, BAD IDEA. PLEASE DON'T DO IT!

John Schultz Brookings SD jts56ford2000@yahoo.com

Comment: This refuge has been on East Oakwood since the 1950s. so no need to simplify everyone knows it. Waterfowl need a place to rest, and because of the refuge some of the best Canada goose hunting in the state is right here. Both decoy hunting and rd. right of way. Closing E. Oakwood for 3 months of the year to boating does not reduce opportunity as shore fishing is still available all year, and West Oakwood is open all year, also Lake Sinai and Lake Goldsmith are all close by. If you remove refuge and boating restriction it will ruin the waterfowl hunting opportunity for many and are in effect reducing opportunity. I am also a fisherman. Last, in many years we have freeze up by mid-November so it is only a six week boating restriction and then people can ice fish.

Joanita Kant Brookings SD jeetakant@gmail.com

Comment: If the proposed change is to "focus on increasing recreational opportunities and simplifying regulations to make it easier for sportsmen and women to participate in the outdoors in these areas," this proposal misses the mark. Each location in the entire listing for proposed changes is unique, and "simplifying regulations" is a poor reason for treating all locations alike. The current restrictions that are in place at East Oakwood have resulted in a wonderful oasis of natural beauty with a variety of wildlife. It is my favorite place to visit in the entire state. I can always expect to find an amazing variety of birds, and I consider it a bird watcher's paradise. The last thing that East Oakwood Lake Waterfowl Refuge needs is move development of any kind because of the risk of destroying this unique ecosystem when considered in its entirety. Keep in mind the word "refuge." All of the wildlife at this

place need protection from too many recreational opportunities. Don't ruin East Oakwood Lake Waterfowl Refuge by encouraging more traffic and usage than is in the best interests of preserving this incredible place of natural beauty. That is what this proposed change would do. The over-development and excessive access at some of the largest glacial lakes in eastern South Dakota should serve as examples of what happens when wild areas are not protected. Please let East Oakwood Lake Waterfowl Refuge remain one of the most beautiful wild places in the state where people can take "refuge" from too many recreational "opportunities" run amok. The proposed changes would seriously interfere with goose and duck hunting because with increased public access, the thousands of waterfowl that currently find refuge at East Oakwood would simply leave because of the disturbance. I am a licensed waterfowl hunter and fisherman, and I hunt near East Oakwood Lake, and I fish there. Those are not the primary reasons that I oppose this change. South Dakotans deserve bird refuges as places where they can go to see nature at its finest. Please read Also Leopold's Sand County Almanac before making your decision. One of his favorite quotes was, "I am glad I will not be young in a future without wilderness." Do the right thing for the upcoming generations of South Dakotans, and provide more refuges with restrictions, not fewer.

Bill Antonides Aberdeen SD billantonides@abe.midco.net

Comment: On this: Modify the Putney Slough "no boating zone" to "electric motors only" and change the date from Oct. 15- Dec.31 to Oct. 20 - Dec.31 in Brown county.

The change in dates is not a great deal, but is OK. However, IT MUST REMAIN A NO BOATING ZONE. This refuge holds untold thousands of snow geese and other waterfowl during the time frame mentioned, and one boat, motorized or not, will destroy opportunity for hundreds of sportsmen and women.

Please note the no boating restriction was placed on certain waters for a reason. If it helps the general public, the rule should remain in effect. If it serves on the provide hunting for a select few, then get rid of it..

That said, GF&P should work with townships to provide better vehicular access, even if it is just a marked, dirt road, to the GPA surrounding Putney. As it stands now, hunters might have to walk two or more miles through thick brush/rushes to reach prime hunting spots. The roads are there, just farmed over.

Gene Hakenson Watertown SD gmhakenson@gmail.com

Comment: In regards to closing Swan Lake to motorized boating for the purpose of M & E to have their own private duck shoot is ridiculous. First why hasn't this been posted in every news paper in SD, sure appears to be a hidden agenda going on here which most locals in Watertown know what it is. Most others have no idea what is trying to be passed here for their personal use to which something that sportsmen have paid to use of a lake that is well over 50 % public. I understand they have purchased this land for waterfowl hunting but I also understand that the sportsman that have purchased watercraft for other reasons outweighs what the cost of what M & E Land Company has spent for a private waterfowl shooting. Swan Lake is not a quality duck slough per say as there are hundreds of smaller sloughs that makes better habitat for roosting of waterfowl. What is going to happen when a couple of kids are shooting waterfowl out of a small watercraft with an electric motor not capable of winds or rough water on a lake of that size to retrieve something they have shot, it don't a genius to know what can happen. I grew up on a farm in Rosholt SD and received my first hunting license in 1968 and have waterfowl hunted since that time. You don't have to be a wildlife biologist to also know that the flyway has

been moving west for many years now. The state already has a seasonal refuge for waterfowl at Reid Lake which the way a bird fly's is a short distance to Swan lake area for roosting purposes. So I hope that the GFP and state declines this request, if this is granted it will only open more doors to deny access or use of public lands by all sportsmen and not just the wealthy that can go purchase land adjacent to a piece of water for personal enjoyment. Locals in Watertown already know what you will be told if you were to ask permission to hunt or fish this particular piece of property or water adjacent to it. These waterfowl fall under federal guide lines and should not be allowed for a few individuals personal enjoyment, please deny.

Merlin Jeitz Watertown SD SDjeitz1@wat.midco.net

Comment: We have so few ducks on these lakes and is going down steadily year after year; I don't want to have to have people in boats disturbing them any farther. Please help us enjoy SOME hunting by not allowing boats ,of any kind, on these lakes.

Betty Harper Watertown SD ecko@vastbb.net

Comment: I'm only a woman who loves to fish, but first and foremost I believe in boat safety and only being allowed to use only a electric motor on Swan Lake on a windy day would ruin my fishing trip. You must be doing this to satisfy one land owner, your putting restrictions on this lake that is 70% public land and water, I'm only a woman, but I can tell when something is wrong. When the U S government is talking about opening parts of Sand Lake (a federal water fowl refuge) to water fowl hunting. Come on boys where is your heads at??

Megan Olson Watertown SD olsonmegr@gmail.com

Comment: I am in opposition of the change to allow motorized boats on these lake Oct. 20- Dec. 31 this could have major adverse effects to the waterfowl who migrate here at limit hunting opportunities in this area!

Mike Malimanek Watertown SD mmalimanek@yahoo.com

Comment: I have hunted Swan Lake with a small duck boat, and never had an issue with disturbing the waterfowl. With all the issues involving water in South Dakota it makes no sense to shut down a lake that is mainly owned by the public. Every year it gets harder and harder to gain access to ground you can hunt on. We are discouraging our young people from hunting and fishing by too much regulation.

Fish Limits – Reetz Lake

Charlie Rokusek, 29/90 Sportsman Club, Sioux Falls, SD, personally (see email) and club comments, discussed at meeting last night. Members feel setting a bad president by allowing agreement to have different limit when limits are set by the department. Strongly oppose this. Also the ability to put infrastructure if the agreement is no longer in place boat ramps and any other infrastructure that was paid by sports dollars should be removed. 5 attendees at meeting, but did discuss with other members prior to meeting who held same opinion.

John Simpson, Pierre, SD similar to previous testified. Concern with different fish limits. Was proposal for fish limits proposed by the landowner was it discussed and validated by the fisheries biologists in the area? If not it should have been. Why would landowner want

this kind of limit? Also understands there is a fee involved and difficult to ensure public access on public resource with sportsmen's dollars when landowner receives funds the water and the fish are public property. Hope you reject this proposal.

Chris Hesla, SDWF, Pierre, SD, opposed for basic reason for two different limits of fish. If you treated everyone the same would probably be in favor. Disagrees with creating two different classes of sportsmen. Not worth what landowners are proposing. Not fair and equitable to everyone throughout the year should not spend sportsman dollars Thank the Reetz family for allowing fishing, remove the boat ramp/parking lot and let them have the water.

Stephen Hay Lake Norden SD
s.hay427@hotmail.com

Comment:Please approve the Reetz lake proposal for one year only. See how or if other landowners react to being "under paid". One year only then assess and evaluate any backlash then decide if you want to continue with the Reetz proposal or make any changes.

Jim Gruber Estelline SD
jgruber148@yahoo.com

Comment:when we start letting landowners decide safe level harvest limits, and who will be allowed to fish it is time to say..... NO THANK YOU. and who pays for the stocking of these lakes.. hopefully the land owner from now on.. if they want so much control, i say. give it to them, and when it dries up or freezes out they can have their slough.. this nonmeandered lake thing is disgusting.. we have got to be the only place in th USA with this kind of regulation.. wondering, do the same regulations set forth by these kings apply to them also? and if so, who is going to enforce or write a ticket to one of these land owners?

Jed Bertsch Aberdeen SD
jed.climate@gmail.com

Comment:I read that Access to Reetz lake will be open to the public for 5 months. With this will be special limit restrictions. I have also heard rumors that in or for this to happen the state is paying the land owners. What I get from this is that the state is going to pay the land owners, then pay to manage the lake for the landowners, pay to keep up the dock and launch, and then the land owners are going to restrict what the state tax payers can keep above and beyond normal regulations. Is it public record what if any payments are made and to who. I believe is state funds are being paid to private land owners it should be released to the public as well.

Shane Ellwein Fort Pierre SD
el.wine@hotmail.com

Comment:I am not in favor of opening the lake to varied catch limits. I would love to access it again but that price is too steep. I would rather see it closed for good than grant the landowner those conditions.

Dennis Clemens

Frankfort SD dennisclmens

Comment:The GF&P should not stock or manage any lake unless it is open year round and have the same limits as the rest of the public waters.

Opening a lake for a limited time and limited harvest so the landowner can get the lake stocked by GF&P and then have people pay their guides to catch the fish while the lake is closed to the public is WRONG!!!!

Any water getting help from GF&P for stocking or management should be open access year round without limited harvest.

I am OK with Reetz remaining a trophy lake for Walleye with all the time and money that has went into doing that from the state. but the season and other harvest limits should be open like other public waters.

Mike Schortzmann Rapid City SD mjsdas@rap.midco.net

Comment:I am against the proposal by the landowners of Reetz Lake. Once we start letting landowners set rules and regulations, we open the door on many other issues. We need to explore other ways to resolve this. Blackmail is not one of them.

Benjamin Minor Webster SD Bsminor@hotmail.com

Comment:What are the total costs involved? There are 5 lakes currently open to the public within an hour drive that have better size and numbers on walleye populations. Please no short term leasing of access. Only purchasing at fair market value(submerged for decades).

David Smith Pierre SD

davefromtn@yahoo.com

Comment:I am oppose In an effort to regain public fishing access to Reetz Lake; Game, Fish and Parks staff have been working on access agreement terms and conditions with the landowners of Reetz Lake; currently a closed nonmeandered lake in Day County. The proposed harvest restrictions meet the conditions set by the landowners of Reetz Lake and if approved, Reetz Lake would be open to public fishing from May 1 - Sept.30. Fishing access from Oct. 1 - April 30 would be open by landowner permission only.

I do not believe a landowner should set the harvest limits. The landowner does not own these fish, they are through taxpayers dollars. This is a tricky slope to go down. It suggest that the landowners own these fish.

Mark Richardson

Aurora SD

mrichar07@gmail.com

Comment:Sounds like a privatizing a public resource. Can't wait for others to follow this lead. For the past few years, GFP has been trying to make regulations more standard

across different bodies of water, this goes against that rule. I would rather see it total catch and release for all species.

Justin Allen Pierre SD

Comment:I'm against the proposed agreement to open Reetz Lake. I think the proposal to have the lake only open to the public half the year and then permission only the rest is crazy. Either open the lake or don't. Also I find it funny that GFP press release does not include the fact the Reetz's want 8k a year to open the lake for 6 months a year. If passed this paying to fish public water with sportsman dollars will send a message to all other landowners that public water are for sale. Hold the GFP hostage that landowners need money otherwise they will close the states waters. IMO if Reetz don't want to provide fishing without a huge payment then so be it.

Turn any other lake in the area into a "trophy" lake. You don't need Reetz Lake. Please do not reopen Reetz Lake under the proposed limitations and payment or anything even close to it.

Katie Hansen Watertown SD kmh20@msn.com

Comment:I oppose changing the harvest rules on Reetz, and feel the lake should remain closed. *here is my phone number 605-956-0244 if you would like to hear my reasons.

Terry Amy Watertown SD tja19@abe.midco.net

Comment:I oppose the proposal for Reetz Lake. It would set a terrible precedent for these disputed waters. It would allow landowners to restrict what the public catches on these waters, while allowing them and their friends to catch and keep whatever they want. The landowner owns the land under the water, they do not own the water nor the fish in the water. These belong to the people of South Dakota. Leave the lake closed and keep the current restrictions on the lake. Also, since the lake was stocked by the GFP and this was paid for by sportsmen's license fees, if the landowner closes the lake, we should have the landowner reimburse the GFP for the money spent on stocking. These funds could be used to improve fishing on other lakes.

Kyle Kaskie

Aurora SD

thefishies2003@yahoo.com

Comment:The proposal for a new daily limit change and season dates for Reetz Lake, benefits the supposed landowner and does little to no good for the public access issue. This purposed change is only creating a trophy lake status for this specific lake of which will only benefit the landowner. The lake will be closed to public access during the primary fishing periods for which this lake is primarily fished (i.e. ice fishing). This only leads to a pay to play mind set which will most likely be taken advantage of down the line. This also will be than used as the precedent for future meandered waters. This is NOT how we should be trying to obtain better public access.

Brian Aker Sioux Falls SD

briandton@wat.midco.net

Comment:This is a joke. The landowner created this foolish proposal so the state maintains the boat access for his personal use.

Anthony Filholm Brookings SD

anthonyfilholm@hotmail.com

Comment:Dear Commissioners, I applaud your attempts to improve public access to these waters but I suggest you do not go down this road as you will be setting a precedent of allowing landowners to control wildlife on their land. They own the land but the public owns the wildlife. If you do this, are you ready to start making concessions allowing landowners to manage their wildlife as they see fit? I am not a fisherman but this does have an impact on all of us. Thanks for your time.

Chuck Clayton Huron SD
clayton@hur.midco.net

Comment:This proposal should be rejected. If we start letting private landowners dictate fishires management, which this proposal does, and give control of public fish and water to the landowners, we are going backwards. Not one dime of public money should go to private landowners that want to dictate public access!!!!

Darrin Christensen
Watertown SD
livetohunt@wat.midco.net

Comment:They should have to follow stae laws like everyone else! I oppose them getting special treatment to open the lake!!!!

Randall Schleuter Dell Rapids SD
Dakotaqball@goldenwest.net
Comment:oppose.

Timothy Kaubisch Sioux Falls SD

Comment:I don't agree with sdgfp paying the reetz family for access when it would not be open year round, we as fisherman and sportsman had Paid for the body of water along with fish in the water, we shouldn't have to pay for minimal use nor pay to fish it

Lane Hogstad Watertown SD Lhogstad@hotmail.com

Comment:If it's back open it's open all or none not a state funded winter private lake. We have given enough.

Frank Duin
Sioux Falls SD
f-duin@hotmail.com

Comment:I understand the landowners position on this matter, but I truly believe the landowners that Reetz Lake resides on are trying to take enormous advantage of their situation. This lake is full of large fish due to the harvest limits that were in place for years. There is absolutely zero chance that he is not accepting cash payments to fish this lake. If he wasn't, what is the purpose in changing the harvest limits? I feel if the landowners wanted it closed then leave it closed. If the GFP gives way for this landowner, what will happen with the rest that "own" other bodies of water with similar fish populations? Give in once and this entire situation will spin out of control. The changing of the harvest limits per season screams "guide payments" to me. Please leave it closed. Additionally, I have met the landowner that Goose Lake resides on, and his only complaint concerning his situation was that of people parking on the road while fishing thus making it difficult/impossible to drive farm equipment through. He then granted me access to park in his field driveway

whenever I wanted. He made the comment that the Reetz Lake "owner/owners" are out for blood. Just food for thought.

Ethan Delvo Watertown SD ejdelvo28@yahoo.com

Comment:It is and outrage and an outright disgrace to the South Dakota Game, Fish and Parks provide what is essentially a private rearing pond in the winter for the owners and their friends to harvest from as much as they please under statewide limits, while simultaneously not allowing the public to harvest under the same regulations in the summertime. This proposal does exactly this. "By permission only" is just the owners' way of keeping the lake all to themselves in the winter while being allowed to take all the limits of fish they want. This is not a compromise, this is a one-sided deal favoring the owners. I as a sportsman would like to see a compromise that allows for modest harvest limits for everyone, including friends and family of the owners, and public access allowed all year. This would allow the owners to have their share of fish while not being unfair to the public. For example, a walleye regulation of something to the effect of 2 under 20" and 1 over 28" would be a good compromise to allow the owners to have their share of fish while maintaining the trophy fishery by protecting 20- 28" fish and keeping the lake open to the public. If this "deal" goes through, it will just go to show how deep the corruption goes in our government.

Matt Schoppert Sioux Falls SD

Mattschoppert@gmail.com

Comment:I disagree with the president that this will set. It will incentivize other private individuals to push for closing off water for their own private interest.

Water is held in the public trust, the state is the trustee. I feel a misallocation of that right has already occurred and this is a continuation of that problem. No individual has superior rights, closed for one should mean closed for all, with no special interest benefiting in any capacity. I'd rather never fish Reetz again than set this precedent. Do not barter away public resources.

Anthony Volk

Aberdeen SD

Advolk8@gmail.com

Comment:Our state is becoming the laughing stock of the country the way you and our elected officials have been treating this matter. How much tax and license money had been spent stocking and maintaining reetz lake the last 20 years? If a landowner recieved any tax payer money or tax breaks for these flooded lands they should all be public.

Mark Doty Vermillion SD

doty.g.mark@gmail.com

Comment:I don't want to see one cent of my tax dollars or license fees go to private lakes that the owners have control over. There are enough other public lakes that could use that money, use it there.

Kent Jamison Aberdeen SD

Comment:If the landowner isn't going to open the lake for all, leave it closed. Plenty of other lakes in this area without caving to greedy landowners.

Dan Waldman Aberdeen SD

Comment:I am in not in favor of the proposed agreement as written and the only part I would change would be that the size restrictions would remain the same for everyone all year long. I understand the landowners wanting privacy during the winter months. This potentially could set a precedent that more landowners could use to close water and negotiate different size restrictions and limits for a select few. I would be in favor of the closing during different times of the year but not in agreement of two different sets of regulations for the public and the landowner and his select few. Thanks

Jordan Grambort
Watertown SD
jcg2496@gmail.com

Comment:It's great that you guys are trying to reopen the body of water, but the landowner shouldn't be able to do whatever he/she pleases on length and bag limits. If it is to open it should be open year round not only certain times of the year. If they do t want anything with that deal leave it and spend that money not spent on that lake elsewhere where landings or lakes that need it more. I've fished reetz lake many times and it was fun fishing but if the landowner isn't going to budge I have no problem launching my boat elsewhere

Randy Albright Rapid City SD
randyalbright2011@Gmail.com

Comment:As long as South Dakota deems water private ownership, No public monies should be spent in management of said water. If 100% public access is permitted YEAR ROUND then state monies should be allocated to managae the water and protect sportsman from illegal private interests.

David Brown Humbolt SD
daveandris@outlook.com

Comment:If public funds are used to maintain the fishery at Reetz lake, it should abide by statewide regulations at all times. If it is not open to public access at ANY time during the year, NO public funds should be used to maintain this fishery.

This proposal is nothing more than using public funds to build an maintain a well stocked, private ice fishing location for the landowner and whomever he grants / sells access to. This is not in the best interest of the sportsman and not what GFP should be spending it's funding doing. If a compromise cannot be reached that keeps the fishery open to the public at all times, all control and financial responsibility should be immediately withdrawn by GFP and transferred to the landowner.

Derek Garner Willow Lake SD
garner670@gmail.com

Comment:This is setting a bad presidence for other bodies of water . Do not want the state to waste money on stocking and renting a lake that you cannot fish year round . If the landowners want to fish it in the winter and take what they want then the general public funding the lake has the same right . This is a bad deal and please consider the public sportsman for once . The non meandering water issue is already bad enough. Don't make it worse and consider the public for once . Thank you

Char Schleuter, Dell Rapids, SD dakotaqball1226@gmail.com

Comment:We have rights and game and fish have put our tax dollars into these lakes.

Alex Vogel Aberdeen SD
alex_vogel99@hotmail.com

Comment:It is absolutely ridiculous to let the person who owns land underneath the water dictate regulations for the fish in that body of water. It seems all of our legislators have forgotten that the water is owned by the PEOPLE, not the landowner. Guess we are saying those are his fish too since we are allowing him to dictate terms. I am done fishing any lakes over that way. Landowners apparently are more valuable than anyone else in this state.

Cary Leibeg Chester SD
caryleibeg@yahoo.com

Comment:This is not ok, I can tell by the proposal this land owner plans on limiting fish for summer in hopes more will be available in winter. I guarantee he plans on denying access to the lake unless you pay or he plans on renting ice houses out. He wants the limits off in winter because no one would rent or pay for those highly restricted limits. This will open it up for all other "land owners" to do the same. Vote against this!

Steve Schull Watertown Sd SD
sandpschull@gmail.com

Comment:why close it thru the winter does not make any sense try to get permission where do you find this person probably get turned down anyway wants for own personal use is not fair to any one but the reetz buddies

Sammi Blood Pierre SD
missdolli.sd@gmail.com

Comment:Why do landowners get to set the seasons and the harvest regulations for a lake? If there's any reason other than their own financial gain, I would like to know it. The sportsmen should have an equal voice in what happens with the lakes/seasons, not only the landowners. If this passes it will set a precedent for others to take advantage of the sportsmen.

Tim Gaikowski
Webster SD
Tgaik77@hotmail.com

Comment:Do not pay Reetz family or agree to those terms. That will be bad for all water just close it and remove fish to put in bitter or waubay lakes. They have been making money off that water already.

Corey Ragels Watertown SD

Comment:Open all year round or close it for all even the farmer

Landon Thompson Sioux Falls SD

Comment:oppse

Shane Andresen Brandon SD
shane.andresen@poet.com

Comment:I like the proposal..

Chad Taecker Brookings SD Ctaecker@hotmail.com

Comment:I strongly oppose the path you guys are taking us down!

TJ Hauck, Ramona, SD
tjhauck@gmail.com

Comment:The deal is one sided. Quit worrying about lakes farmers don't want us on. Take care and use the sportsman's money to make the what is deemed to be the public's lakes better. Make them strong fisheries. Improve access. Put in more Ramps.

Alex Dagen Mitchell SD
Dagen384@gmail.com
Comment:oppose

Ryan Wendling Beresford SD Wendl26t@yahoo
Comment:Stupid compromise. Totally disagree . But sportsman's voices haven't been heard the last few years so go ahead and screw this one up as well.

Mackenzie Heinemann Dell Rapids SD
mackenzie.heinemann@southeastt ech.edu
Comment:If this is passed, then every landowner will want to do this. This will create a pay-to-play fishing environment in this state and takes rights away from non-land owning sportsmen and women. Why should the GFP pay this guy \$8,000 for six months of open access? The lake is stocked by the GFP and if the landowner won't comply with state law then he should not reap the benefits of stocking the lake.

James Vis Sioux Falls SD
jjv12480@hotmail.com
Comment:I am disappointed in how GFP has handled the whole situation.

Jeff Sebesta, Sioux Falls, SD
jsebe@outlook.com
Comment:Dear Board members, I feel paying a landowner for access to this lake is a bad idea. Did he stock the lake? Who did and who paid for the rearing of the fish and wages of those who stocked it? If this is now a private body of water should it be called a lake?

Jordan Schreur Sioux Falls SD
Comment:It is great that there is a chance of getting Reetz lake back open for at least open water fishing but the start date of May 1 should be April 15 being that most years our ice is off in the beginning of April. Also we should keep the bass regulations at 14" and 1 over 18"

Steven Mahlstedt Brookings SD Mahlstedt88@gmail.com
Comment:I feel that adopting the landowner dictated restrictions sets a horrible precedent by allowing a landowner to dictate lake management, rather than a qualified GFP team of biologists specifically trained in this field. Also, the lake should either be open or closed to the public year round. Ice season by permission only opens it to pay to play. I would rather the lake remain closed than to see this precedent set. Thank you.

Patrick Carney Sioux Falls SD
Carney85@yahoo.com

Comment:I do not like the idea of using license fees to pay for limited use of Reetz lake. I would rather see those funds utilized on public waters to improve infrastructure and fish populations.

Dan Graf Whitewood SD
dan_graf@hotmail.com

Comment:Leave Reetz Lake closed to public fishing. Policing the lake and the harvest restrictions would be too difficult for wardens and the land owner. Ask land owner if research could be done to study the lake and compare what fish populations do when there is no public fishing. Maybe the land owner could open lake up for one or two fishing tournaments a year. Money received from the event could be given to charity and/or Game Fish and Parks. Many fishermen would be excited to fish once or twice a year on a lake that is closed to public fishing! Fishermen would have a gem that is protected except for the one or two times a year. Everyone could win.

Jeff Hanisch Montrose SD

Comment:Invest our money into bodies of water that are public.

Ryan Carlson Brandon SD
rynocarlson@gmail.com

Comment:I oppose any deal on Reetz Lake that does not allow year round access, and ZERO cost to the GFP and the State of South Dakota.

Quintin Biermann Rapid City SD
Quintin.biermann@hotmail.com

Comment:I feel that sportsman's dollars would be better served improving docks and accesses as well as lakeside use facilities.

dakotalabs9@yahoo.com

Comment:

1. Too much money for only 6 month Lease.
2. The Lake is NOT "Open" during Ice Fishing.
3. Landowner is "Double Dipping" !! Charging SDGF&P a summer fee for Trophy Fishing 6 months and Then Leasing Lake (uncontrolled) to "Whom Ever" for The Remainder of the Yeat
For

Mark Widman Tea SD
Mwidman294@gmail.com

Comment:Please do not support this proposal. It sets a bad precedent for managing our wildlife resources. All wildlife and all water is held in the public trust and should not be managed by property owners.

Use our Sportsman's dollars to net all the fish out of closed waters and move to water that is open to the public.

Chad Ringgenberg Aberdeen SD 1973novass@gmail.com

Comment:I've fished Reetz Lake with my family for years with my two teenage boys and my wife. Rarely have I kept fish from the fishery. I was glad to see it is proposed to reopen, until I saw the details. Where is the logic behind this proposal? Are the Biologists

standing behind this? It makes no sense to basically make this body of water a catch and release pond, except for the land owners. SD sportsman are to pay how much a year for access and maintain the lake? I'm sorry, but if I had a vote, I would reject this and keep the lake closed. We can't start a precedent like this on our other waters.

Derek Simon Aberdeen SD
derekksimon@gmail.com

Comment: The current proposal for Reetz Lake isn't one I support. The slot limits are not based on facts or put in place to create a healthy sporting lake and are arbitrary at best. In my opinion the proposal will waste fish resources and cause the majority of fish to die off before ever reaching the proposed size limits. If tax dollars are going toward the lake the GFP should be allowed to manage the lake and that includes setting limits and size restrictions.

Having the lake closed for part of the year is also unacceptable. If I had to choose between the current proposal and leaving it closed. I'd choose the later.

Dylan Cavanaugh, Aberdeen, SD
dc571@abe.midco.net

Comment: The current proposal for Reetz Lake isn't one I support. The slot limits are not based on facts or put in place to create a healthy sporting lake and are arbitrary at best. In my opinion the proposal will waste fish resources and cause the majority of fish to die off before ever reaching the proposed size limits. If tax dollars are going toward the lake the GFP should be allowed to manage the lake and that includes setting limits and size restrictions.

Having the lake closed for part of the year is also unacceptable; it removes the resource from a good number of fishermen who only ice fish. Again if tax money is going toward it the access should be dictated by the GFP and based in facts, not fluff. If I had to choose between the current proposal and leaving it closed. I'd pick the leaving it closed.

Bryan Phillips Aberdeen SD bphillips@nvc.net

Comment: I am generally opposed to this proposal as I do not feel that there is enough information about the deal publicly and it would seem to set a very bizarre precedent. Are the proposed daily limits based on studies, biology, etc. in ANY WAY.? Who will manage the fishery if the proposal is passed?

Our legislatures have made water access an even more difficult issue for all and recent legislation has in no way tackled the very complex issue. While I understand the need to honor landowner rights and wishes; there should be a general public interest that takes priority over personal demands.

This proposal does not seem to be a good deal for anyone going forward.

Jenifer Ringgenberg Aberdeen SD sodaksun@gmail.com

Comment: I do not agree with the Reetz Lake proposal. The lake should be reopened with the same rules and regulations to EVERYONE that is fishing this lake. Our tax dollars are paying for dock/access maintenance and stocking fish. I do not understand the reasoning behind a decision to allow the lake to be closed to the general public for half the year, then allow the landowners and their buddies/customers to take limits way exceeding the average sportsman fishing the same lake during months it is open to the public. It should be ALL or NOTHING. Either we ALL get the same rules and season for fishing, or NO ONE, including the landowners, get to fish our state- stocked and maintained lake.

Jon Kludt, Mitchell, SD

Comment:I like the idea of sharing the resource. I was not going to ice fish it anyway. I like the size limits. The access lease price is what it is even though it skyrocketed.

People including myself will say this is a lopsided deal that the public gets a lemon and will always get lemons.

I guess I've made lemonade at that the lake because it provides for a good fishing trip if you like catching good fish.

I'm in favor of experimental regs. (Not every lake has to be managed the same just because its simpler to do so.) Please consider a one over 17 inches for black bass at Reetz or wherever/whenever appropriate and won't offend to many.

Trappor Masson Spearfish SD Trappor26@yahoo.com

Comment:I support imposing stricter limits on harvesting fish. There should be much tighter limits on walley and other fish on the Missouri river. Fishermen are coming from out of state to harvest fish because their home states have tight limits or catch and release, and several instate firshermen and guides are out every day harvesting limits of fish.

Al Engstrom Watertown SD alengstrom@iw.net

Comment:oppose

Brian Slack Sioux Falls SD

Comment: oppose

Tom Wight

Watertown SD

Dakotasatellite@gmail.com

Comment: While this may seem like a compromise to some, it's opening the door for more problems. If the limit is one fish of a certain size during the allowed period it should also be when the lake is closed. When the lake is closed what is keepin

Derek Wyszynski Colman SD

Comment:I ask you to please reject the proposal for the Reetz Lake access. While I can understand the payment portion of the proposal, I am strongly against allowing a more liberal harvest regulation while the lake has restricted access. In the end this is a privatization of a public resource for half of the year.

Tim Amy Watertown SD

amytim@hotmail.com

Comment:It's great trying to open this body of water again but having two different season's is a NO go for me. The Reetz's owe the ground underneath the water but don't owe the water or the fish. Vote NO on this one.

Jeremy Yost Bowdle SD

jeremy_yost@hotmail.com

Comment:I think this agreement would set a bad example for public access. I would rather see the money go to fighting for open access or purchasing another property in the area.

Dave Martz Watertown SD

davem@wwtireservice.com

Comment: Paying them off will open "can of worms" for other landowners to set prices for their access. At what price will it stop?

Dale Olson
Harrisburg SD
Theolsons22@icloud.com

Comment: If the state intends to make public water private they should remove the fish and relocate them to a lake the public can fish all year long at the current limits.

Justin Murphy Crooks SD
justintmurphy@outlook.com
Comment: oppose

Jared Mouw Sioux Falls SD
Comment: oppose.

Anthony Martinec Sioux Falls SD ajm3416@live.com
Comment: oppose.

Jeremiah Schultz Elk Point SD
Jschultz@thermobond.com
Comment: If the private owner does not have the same regulations as the public this is a bad idea all the way around.....please do not let this pass as it will start a domino effect that the GFP cannot control. Make the rules the same all year round for both parties is the only fair way to do this.

Donald Noethlich
Aberdeen SD
Donnoethlich@icloud.com
Comment: I think money could be better spent on other lakes we should go in and rip up the boat landing and remove all gravel from parking lot and put them to use at a state lake which is in need such as Reid lake which I have seen no progress on in a long time and GFP officer that I have talked to have been very rude to me on this subject as well.

Chris Duklet Watertown SD
Comment: I love fishing on Reetz Lake. The work and effort put in by the GF&P to make it truly a trophy lake has been exceptional. Needless to say I was very disappointed when it was closed last year. A situation that could have been avoided with some decency on the part of fishermen and some understanding by government that a landowner can't make money on flooded land. At least someone could have proposed taking the flooded land out of the tax rolls or paying its taxes through increased license fees for residents and non-residents alike.
But I absolutely, can't in any way, support such a proposal that would give a private landowner exclusive rights to a trophy fishery that has been developed with tax payer dollars to be used by that landowner for their own use, the use of selected friends or for the commercial use of this public resource by individuals who pay for the privilege. And to top it off, the landowner and their select guests, don't have to play by the same rules as the people who's taxes paid for such a terrific natural lake that was long term developed for all of us.

I get it from the landowner's perspective too. I've seen our family farm get sold when times got tough in the '80s. I get that the land is your livelihood. But I'm also very concerned when we legalize that private citizens have all the rights to water in a specific area. Long term what legal precedent are we setting?

So to the members of the GFP Commission, all state elected officials, landowners, employees of the GFP and my fellow sportsmen and women I urge you to decline this proposal for the following reasons:

1. Water and it's corresponding fisheries are a PUBLIC ASSET and RESOURCE. Keep it that way. Let all future generations enjoy it together equally as it was intended.
2. Land is needed for people to make an income, not solely as a base to levy taxes. No usable land should mean no taxes. Find a way to help the landowner, not burden them with taxes from lands that can't be used. Take the money out of this.

Thank you.

Mike Reilly Huron SD
wefish@santel.net

Comment:This will set a standard. Non-meandered water is held in trust for the public. If the public can not use the water, then the land owner should not benefit. He owns the land, NOT the water.

Dale Lang, Watertown, SD
Comment:OPEN TO ALL OR NONE ALL YEAR

James Thompson Madison SD thompsji.69@gmail.com
Comment:After reading this deal I feel that it is slanted way to much in the landowners favor and the state needs to walk away from this lake. My opinion is that these are greedy landowners that want the lake stocked at license holder expense and then want to charge the same license holder again to fish it. Take the fish out and put them in other public lakes and let the landowners deal with restocking at there own expense.

Nate Anderson Webster SD
Comment:Worst deal ever. I'm opposed 100% of any deal to pay a landowner for access to public waters. Also to restrict the public 6 months out of the year and let the landowner have a free of all the other 6 months. Haha. Who with GFP even thinks of these deals? Put the time and money into one of the other 100 lakes in NE SD and let the landowners of Day Co. sleep in the beds they made.

Terry Doren Mccool Lake SD
Terry.doren@gmail.com
Comment:oppose

Kyle Roth Hartford SD
kyleroth1@gmail.com
Comment:The entire lake should be closed to ALL recreation, public or paid, and any future management instead of paying these greedy landowners.

Jim Forrette Milbank, SD
Jforrette@hotmail.com

Comment: You are setting a dangerous precedent if you pay for this opening. I am strongly opposed to this whole process. Let Mr. Reetz charge ignorant /well to do/privileged people to fish on his "private lake" do not use my license fees for this unworthy spectacle.

Tyler Gill Great Falls MT
jetsfan5657@gmail.com

Comment: That's bull crap if he wants to make it fully private net all the fish out that south Dakota tax payers payed for (which was me until 3 years ago) drain it and the the people who own the property turn it into a great fishery

Erick Larson Aberdeen SD Ezinstaller@gmail.com
Comment: oppose

Jason Devitt Sioux Falls SD
jsndvtt@yahoo.com

Comment: You need to stop letting people take all these 22-27 inch walleyes and filleting them. Are you kidding? That is the future of all lakes. You have all these lakes so messed up. Why take out the good spawners. You get paid to manage so manage!

Brent Garvey Goodwin SD

Comment: Please do not start using sportsmen's dollars to negotiate restricted access. Please redirect these funds to areas where all sportsmen can benefit.

Andrew Davies, Sioux Falls, SD
aadavies6440@yahoo.com

Comment: Terrible deal. This should remain open to public year round if a payment is going to be made. Additionally, the catch limits should be revisited.

Chad Boike Clara City MN
monbuck_8@hotmail.com
Comment: oppose

Bryan Olson Clark SD
comet_52_07@hotmail.com

Comment: If the restrictions were the same for everybody, year round then it would maybe make sense. I would rather see the money go towards upkeep at other public accesses.

Patrick Lauseng Watertown SD patlauseng@hotmail.com
Comment: oppose

Jon Serck Alcester SD jon@vistrctsd.com

Comment: I think the money could be better spent on other lakes in South Dakota. I feel if we set this as an example then other land owners will take advantage of us. If we set this example we could spend millions on stocking, upkeep, and boat ramp updates for land owners to use the lake for pay to play purposes.

Jeff Kral
Sleepy Eye MN
jhk@newulmtel.net

Comment: sounds like a slippery slope

Roger Mckee Tea SD trkyh8@aol.com

Comment:This is not an equal comprmise. Only the landowner wins

Brad Mork Tea SD

morkbrad0524@gmail.com

Comment:Regulations need to be the same year around.

Paul Sayler Milbank SD

paulsayler@icloud.com

Comment:This is how comprise can work. Our best "closed waters" need to be opened. Great work...obviously a reasonable land owner. Thanks

Chris Thomas Watertown SD

City.thomas@hotmail.com

Comment:This is NOT a good deal for the sportsman. Sounds to me like the landowner is setting himself up for a private fishery funded by the rest of our money and we get little return! This is becoming ridiculous. I see both sides of the issue but something needs to be done or kiss the revenue from fishing goodbye and can guarantee it's not just the out of state fisherman we will lose. Myself as well of thousands of other South Dakotans will also choose not to buy a license if this continues as well. Thank you and hopefully soon this issue can be resolved.

Loren Kwasniewski

Webster SD Classics@itctel.com

Comment:Do the right thing , just say No

Robert Garner Vermillion SD rags57078@yahoo.com

Comment:This is not fair for the sportsmen/women . The limits should be the same year around , what is good for one is good for all .

Todd Rose Watertown SD

Rosebme5@yahoo.com

Comment:Please don't support this access agreement. Please spend the money to fix access to another public lakes. Goose Lake by Watertown didn't have a dock in last week and needs some work to raise the ramp. This is too much money for this little access. The limits are fine, but they should be in affect year round! Who controls the limits of public water and fish?

Renee Allen Pierre SD

Comment:Keep Reetz Lake closed. Landowners wanted the lakes closed now they have it. The public has plenty of other water to fish and hunt without begging certain landowners for access to public waters. No way do I want a penny of my license dollars going to a landowner to fish his lake. Spend the money with other landowners that are much more willing to work with the GFP or use the money to improve other accesses across NE SD. Any lake can be turned into a trophy lake

Todd Rose Watertown SD

Rosebme5@yahoo.com

Comment:Please don't support this access agreement. Please spend the money to fix access to another public lakes. Goose Lake by Watertown didn't have a dock in last week and needs some work to raise the ramp. This is too much money for this little access. The limits are fine, but they should be in affect year round! Who controls the limits of public water and fish?

Nathan Nelson
Lake Norden SD Infdfire@gmail.com

Comment:I support the proposal to reopen reetz to the public. We fished reetz multiple times a week all summer long when it was open. Reetz is one of the funniest lakes to fish in South Dakota. Reetz has never been a lake that you go to for catching fish to take home and eat. It is good to have catch and release lakes in South Dakota cause it keeps the fishing pressure low and makes for a great time for the guys that like to catch and release. I did do some ice fishing up there but I don't consider it a lose for it to be closed for the winter. This proposal is a lot better then what we have right now!

Zachery Hunke Watertown SD
zach@hunkestransfersd.com

Comment:I do not support making agreements that allow for separate sets of rules for certain individuals. It is important that our game commission does not spend sportsman's dollars in this fashion.

Kerry Mertz Arlington SD

Comment:Oppose any funding from the state to the landowner under the proposal.

Mike Eliason Aberdeen SD
eliasonmike@hotmail.com

Comment:I am avid angler which had previously fished Reetz lake prior to it being removed from public use. I support the efforts of the GFP staff for their work in trying to reopen the lake for public use. I also would like to thank the Reetz family for allowing this recent proposal. I do support the fish regulations that are proposed as a "Trophy Fishery". There are plenty of lakes in the area where anglers can keep fish, so it is nice to have one that is essentially a catch & release fishery. I realize that only having the lake open to the public for a select period of time will cause some to be opposed to the proposal. Hopefully this proposal will pass and provide a good start to possibly opening the lake year round in the future.

Jason Jacobs
St. Cloud MN

Comment:Do not pay the land owners for access to Reetz lake. Stop stocking the lake immediatly. Let all the fish die of old age. Land owners should never control public waters. I buy a South Dakota fishing license every year

Jeremy Cadotte Mitchell SD
cadotte210@hotmail.com

Comment:Please do not finalize this agreement with reetz lake. I've lived in South Dakota my whole life and there are so many other beautiful public lakes we can put effort into maintenance, stocking, and public Access for many recreational purposes. I have never fished reetz lake, I'm sure it's a great place, but the regulations go against state laws and

that's wrong, and not to mention only turning it into a guides Haven in the winter time. Citizens should not have to pay for access or be treated differently than an out of stater with bigger pockets, or even a resident with big pockets. There's many other ways to use this money. That lake is completely private, leave the cost to keep it up in the land owners hands. I don't feel many people with benefit from this agreement and will be very disappointed to see it finalized. ??

Gary Ledbetter Yankton SD Garenole@gmail.com
Comment:Pathetic Agreement

Jared Pearson Summerset SD Docjcpearson@gmail.com
Comment:I oppose this proposal as I feel it sets a precedent for future manipulation of public resources to benefit private entities. While these individual do own the access routes and property surface rights, it is the states waters and states resources including all fish and wildlife that use those waters.
I oppose this because of the variance in daily limits. If it is a private lake than state limits should be used year round. If it were a private lake with year round access than I would be OK with restrictions that are consistent. I oppose this because my license dollars have been allocated to pay for stocking this lake, boat landings, and state employee wages to oversee this lake.
I oppose this as the amount of funds being used for limited access and restrictions could be better used to ensure quality opportunities on WIAs or state owned lakes.
Lastly I oppose this because all access to or across any private lands should be consistent across the board and not negotiated on a personal situation basis to prevent corruption of deals to those with special contacts. This is a bad deal for the state now and for all future situations.

Jeff Ringgenberg
Watertown SD
jringgenberg25@gmail.com
Comment:I don't believe there should be two sets of regulations for the different periods. I feel it should be the same, whichever the landowner decides. You are setting a bad precedent with this proposal.

Brett Andrews Aberdeen SD
Comment:My overall stance is I support the proposed changes to limits on Reetz Lake. SDGFP has invested too much time and money into this lake to lose it. It has a decent boat ramp and they have stocked fish in it. It is hard to drive by the boat ramp and see it abandoned. But it is hard to blame Mr. Reetz, if I owned the lake I can see where he is coming from.

I personally love the fact it is a "Trophy Lake." And that the new regulations would extend beyond walleyes. It is nice to have a lake that you can go to and just fish to catch nice fish. I don't fish to keep fish and I am a big believer in catch and release fishing. When Reetz was open I would fish that lake 75% of the time I would go to the glacial lakes to fish.

I wish the lake would be open during ice fishing season but like I said I don't own the lake and we should take what we can get from Mr. Reetz. I believe he wants the lake to be open he just doesn't want the quality of the fishery to be ruined by people keep fish. That is why he is imposing the "trophy" length limits and quantities.

All in all; I would rather fish Reetz for a few months out of the year, than not be able to fish it at all.

Matthew Johnson Webster SD johnsonfarms@itctel.com
Comment: Thank you Reetz farms and GFP.

Mike Van Cleave Aberdeen SD van57401@yahoo.com
Comment: I don't want you to allow anyone to set fishing or hunting regulations. Also you should get all the fish out of reetz lake and other closed waters and put them in to waubay lake for everybody. It looks to me that about 25 to 30 people with water on there land are getting laws changed so they can control the fishing and hunting. A very small percentage of the people of South Dakota .

Eric Moore Yankton SD
Bowhunter3232@vyn.midco.net
Comment: To the best of my knowledge Reetz is the only lake in Eastern South Dakota that is basically a public catch and release lake. This is an incredible fishery that a "Sportsman" can go and catch good quality fish or take a youth on a fishing trip to remember. It does allow one trophy fish to be taken if one would like a mount for the living room. The reason it is this way is Greedy Fisherman aren't allowed to over fish and take limit after limit of fish off the lake till the quantity and size of the fish are not longer there and then they are off to pillage the next lake or reservoir. I feel that SD hunting and fishing organizations should encourage more of these types of lakes and fisheries around the state. Sounds like some of you don't like the economic of how this is trying to be accomplished Or are caught up in keeping your limit of fish.

Bill Antonides Aberdeen SD
billantonides@abe.midco.net
Comment: I will not add all the reasons given by SDWF, as I helped write them and I'm sure you have seen them over and over again.
However, I will emphasize one point: Public dollars should not be given to private parties in exchange for public access to publicly owned waters and the publicly owned fish and fowl in and on these public waters. I might think differently on a perpetual easement, but the law only allows a contract for a blink in time.
And yes, you can use my name and any attribute any official comments from the SDWF to me. Thank you! Bill Antonides
President, SDWF Camo Coalition

Norman West Yankton SD nwest@midco.net
Comment: Please keep Reetz Lake a trophy lake. I agree with the proposed compromise that the GFP has reached with the Reetz Lake landowner.

David Coley
Pierre SD
ddcoley@yahoo.com
Comment: I strongly oppose this proposal. This looks to be the next logical step in the process in turning the only lake in South Dakota with trophy walleye regulations into a pay lake. I believe these fish are still a public resource and that they were stocked with funds from license fees and taxes on sporting goods. Allowing landowners to set more liberal

lake regulations that only apply to them and their guests is simply wrong. Most of the fishing on this lake that I have witnessed in the past has been during the time this lake would be closed to the public.

It seems that the best option would be a voter initiative to redefine "public water" in South Dakota.

A second option would be for GF&P to purchase some of the land under the better non-meandered lakes.

Ryan Roehr Aberdeen SD
acs@venturecomm.net

Comment:Hi, I first like to say thank you for your time. I'm torn on this Reitz Lake water issue because I've talked to local business owners in Webster and they both said they think this is a unfair deal for SD people that own the public trust waters, but yet they like to see some business come back that they have lost due to HB 1001(these numbers clearly show they have lost business due to it, and they know it wouldn't all come back unless HB 1001 is drastically changed/removed). But being that said, this is my own opinion on Reitz Lake.

Please vote no on this agreement because ONLY the GFP and commission can set the regulations and time frame. These are public trust resources and by law I thought only the GFP and commission can set the regs and they have to be the same for all(as I recall from the last meeting the Reitz family said the regulations they wanted and time frame, NOT the GFP). This kinda references back to the supreme court ruling of no one has superior rights to the public trust waters. Once someone or a corporation has superior rights to the public trust then that would violate the supreme court ruling(which HB 1001 currently does already). If the regulation were to be the same and for 6 months each party would be equal, I could go along with a deal. Even though \$8000 is too high for what little time we have. Can we the public that own the public trust see the GFP test results of the past years that warrants one family having regular state limits and the public having just the trophy limits for 5 months, because I heard at several commission meetings that this is what the GFP uses to determine regulations.

2. I like the commission to formally vote on the matrix that was brought forward from the GFP. I have a copy of it and I thought that's what they wanted to go by regarding working on "deals" ? Can we postpone the Reitz lake vote until that matrix is denied or approved first and then go by that for the deal? We can't just be giving a blank check to the GFP on regards to the water deals(I think one should be in place or maybe it is for Walk In areas). I can think of 2 lakes that the boat ramps that are currently in place that could use \$1-2000 worth or fixes right now.

3. This deal is setting up a very slippery slope, and plus I thought Mr. Hepler just last month said, "we need to simplify rules/regulations and try to figure out how to recruit and retain kids and people to hunt and fish" This does the very opposite of that. In fact I put 100% of the blame of reduced kids fishing and hunting in SD in the past 2 years on HB 1001 that Mr. Hepler clearly endorses over and over again.

Please vote NO, unless the deal would be 6 months for each and each party would have equal limits set BY THE COMMISSION. Based on test results of the GFP. But can we first have a standard set in place that the deals are done by, example that matrix.

Thank you, Ryan J. Roehr

Don Roehr, Landowner/4th generation farmer of South Dakota that lost land to the flood in Marshall county.

Andrew Quintana

Raymond SD

andrew.quintana@icloud.com

Comment:Working with landowners is a critical piece to solving the many problems SD GFP faces. I applaud the efforts that you've made to help provide access to areas that the public has not had access to in the past, or has lost access through the non meandered waters state Supreme Court decision.

I believe that by the compromising upon the Reetz lake issue to the landowners request, you set a terrible precedent for the future in how other landowners will handle issues we face with access to waters affected by Non Meandered waters decision. . There has been countless dollars spent into creating a trophy fishery paid for by the license fees and dollars of the public. I believe the alternatives are simple for this access issue. Create equal access for all including the landowners or remove public access. Sometimes we have to realize a poor investment and cut our losses. Equality of opportunity needs to be the mindset going forward. I believe if the Reetz family is not willing to make a realistic compromise then SD GFP should invest their time, efforts and public resources into better opportunities that benefit the public fairly.

Thank you for consideration Andrew R Quintana
Jeffrey Clow Harrisburg SD dj27193@gmail.com
Comment:oppose

Kelly Kistner

President of the South Dakota Division and National Vice President
Izaak Walton League of America 603 Lakeshore Drive
McCook Lake, SD 57049
605-232-2030 - 712-490-1726
iwlasdpresident@outlook.com

Dear Members of the Commission,

The South Dakota Division of the Izaak Walton League of America appreciates this opportunity to submit comment on the proposed changes to Reetz Lake Fish Harvest Restrictions and to regain public open water fishing access to the lake that is currently a closed nonmeandered lake in Day County.

The South Dakota Division of the IWLA has very serious concerns with this proposal for the following reasons. We believe the proposal sets a major precedent that allows an individual to dictate when the public can use the water that lawfully already belongs to all the people of the State. That public ownership is ascribed in the Public Trust Doctrine and state water law dating back more than 140 years. Two recent rulings of the South Dakota Supreme Court upheld the Public Trust Doctrine and the public's ownership of the waters of the state.

We believe approving this proposal only reinforces what we consider the flawed legislation passed during the Special Legislative Session over a year ago. The current law provides no recourse to the public to petition the GF&P Commission to open access to the people's water. The current law also offers no appeal process and provides for little or no public input.

We oppose anything that sets a precedent, such as outlined in this proposal, where an individual is able to control access to the public's water. If an individual wants to be fairly compensated to allow boat ramps, parking areas and/or access roads to public water we could support that.

However allowing an individual to dictate when the public can use public water while yet allowing their "friends" to ignore established rules and harvest regulations defeats the purpose of having trophy lake management.

This proposal establishes a precedent that other individuals could use to control not only who and when people are on the public's water, but they would also be getting public license money to do it.

The current non-meandered water law clearly states an individual landowner cannot charge or be compensated to allow access. The South Dakota Division believes the price of this proposal is way too high to allow only a select few people to harvest fish that belong to all the people of the state from the public's water.

We also believe the South Dakota Game, Fish and Parks Department has highly skilled and dedicated fisheries biologists, some of the best in the nation. We firmly believe that any decision regarding fish harvest on public water must be made by scientists and that decision must be science-based. We ask that any and all harvest regulations are made by the agency's biologists and not by an individual with personal interests in mind.

We urge this Commission to reject this proposal and we ask the Game, Fish and Parks Department to continue to work on another proposal for your future consideration. At this point we feel no agreement is better than an agreement that establishes what we believe is a bad precedent.

The South Dakota Division of the Izaak Walton League thanks you for the opportunity to comment on this proposal. We ask that we be kept informed on this issue as it moves forward.

David Vangsness Milbank SD

Comment: This is just a way for another land owner to profit from state owned wildlife and public entrusted water! These restrictions only benefit the land owner by letting them dictate to the state making their own seasons and regulations! The way this set up should not even be considered, off limits to one off limits to all. If this is not acceptable then netting or a fish kill should be done to this and every state stocked lake that is closed! Those fish belong to myself and every sportsman.

Gary And Marlys Wickre Britton SD gmwickre@venturecomm.net

Comment: We are strongly opposed to the Reetz Lake proposal as it is worded. Setting special limits for special groups would set a terrible precedent and could lead to the privatization of more public trust waters. If opened to summer fishing, we would like to see all lake specific harvest restrictions removed for the season and have statewide regulations for all species from May 1 to September 30 as well as the landowner permission required season.

The public Hearing concluded at 10:51 a.m.

Respectfully Submitted,

A handwritten signature in black ink that reads "Kelly R Hepler". The signature is written in a cursive style with a large, looped "K" and a distinct "R".

Kelly R. Hepler, Department Secretary