



**AGENDA - Revised**  
**Game, Fish and Parks Commission**  
July 13-14, 2017  
AmericInn – Teton Conference Center  
15312 Island Drive, Ft. Pierre, SD

**Call to order 1:00 PM**

**Division of Administration**

Action Items:

1. Conflict of Interest Disclosure
2. Approve Minutes of the May 2017 Meeting <http://gfp.sd.gov/agency/commission/docs/2017/june-meeting-minutes.pdf>
3. Additional Commissioner Salary Days
4. License List Request
5. Internal Controls – Code of Conduct
6. Conflict of Interest

Information Items:

7. Non-meandered Waters
8. Public Involvement & Potential for Live Audio and Video Stream

**Proposals**

9. Petition for landowners with property in non-meandered lakes that are open to public recreation

**2:00 PM Public Hearing**

**Finalizations**

10. Antelope Hunting Season
11. Custer State Park Antelope Hunting Season
12. Sage Grouse Hunting Season
13. Custer State Park Coyote Season

**Open Forum**

**Division of Parks and Recreation**

Action Items:

14. Good Earth Land Gift

Information Items:

15. Little Spearfish Canyon and Bismarck Lake Stewardship Plan Inventory Report
16. Park Planning Update
17. Parks Revenue and Camping Reservation Report

This agenda is subject to change without prior notice.

Minutes of the Game, Fish, and Parks Commission  
June 8-9, 2017

Chairperson Peterson called the meeting to order at 1:18 p.m. CT at Cedar Shore Resort in Oacoma, South Dakota. Commissioners Cathy Peterson, Barry Jensen, Mary Anne Boyd, H. Paul Dennert, Gary Jensen, W. Scott Phillips and Douglas Sharp were present. Approximately 40 public, staff, and media were present.

**DIVISION OF ADMINISTRATION**

**Conflict of Interest Disclosure**

Chairperson Peterson called for conflicts of interest to be disclosed. None were presented.

**Approval of Minutes**

Chairperson Peterson called for any additions or corrections to the May 4-5, 2017, minutes or a motion for approval.

Motion by Sharp by G. Jensen TO APPROVE THE MINUTES OF THE MAY 4-5, 2017 MEETING. Motion carried unanimously.

**Additional Commissioner Salary Days**

Commissioner G. Jensen requested one additional salary day for waterfowl meetings.

Motion by Phillips with second by Dennert TO APPROVE THE ADDITIONAL SALARY DAY AS REQUESTED. Motion carried unanimously.

**FY18 Budget**

Chris Petersen provided an overview of the FY18 budget for the Department indicating it totals 90.9 Million with increase of 2.3 million. Petersen presented the Division of Administration budget at \$4,237,361; Division of Parks and Recreation Operations Budget at \$24,572,816; Parks Capitol Development Budget at \$9,204,500; the Division of Wildlife Budget at \$48,463,900; Wildlife Capitol Development Budget of \$3,032,135; and the Snowmobile Trails Budget of \$1,329,199.

Director Petersen indicated the Division of Wildlife Operations Budget and Capitol Development Budget along with the Snowmobile Trails Budget require Commission action and requested approval of the three budgets as presented that will be implemented July 1, 2017.

Motion by B. Jensen with second by Boyd TO APPROVE THE DIVISION OF WILDLIFE OPERATIONS BUDGET OF \$48,463,900; THE DIVISION OF WILDLIFE CAPITOL DEVELOPMENT BUDGET OF \$3,032,135; AND THE SNOWMOBILE TRAILS BUDGET OF \$1,329,199 AS PRESENTED. Motion carried unanimously.

Petersen also provided an update on the status of code of conduct that will be brought before the Commission for adoption as an upcoming meeting. He indicated that that Governor's Office staff and other state attorneys are currently working to develop code of conduct for state boards to adopt. He stated this same group is also

Hepler stated major agricultural groups support compromise with the exception of the Stockgrowers. He noted we will need work with landowners and create a buoy system.

Commissioner B. Jensen recommended starting off by meeting with landowners.

Commissioner Dennert inquired on section 11 of the draft legislation in regards to liability and asked for rough update on changes in new draft of the bill. He thinks a lot of problems started with lack of respect.

Helper responded that the portion he was inquiring about was likely a drafting error.

Commissioner Sharp thanked GFP staff and Kelly on the work done thus far and how fast this has come.

Commissioner Peterson also thanked the Department for reaching out to landowners and thanks to legislative group for working so fast.

## **PUBLIC HEARING**

The Public Hearing began at 2:00 p.m. and concluded at 3:30 p.m. Minutes of the Public Hearing will follow the regular commission minutes.

## **PROPOSALS**

### **Antelope Hunting Season**

Chad Switzer, wildlife program manager, presented the proposed changes to the antelope hunting season noting the only recommended change from the previous year is to 1. Adjust the number of resident licenses from no more than 2,945 one-tag any antelope licenses to no more than 3,265 one-tag antelope licenses.

Motioned by Phillips with second by Sharp TO APPROVE THE ADJUSTMENT OF RESIDENT LICENSES AS PROPOSED. Motion carried unanimously.

### **Archery Antelope Hunting Season**

Switzer presented the proposed archery antelope hunting season no recommended changes from the previous year.

Motioned by Boyd with second by Sharp TO APPROVE THE ARCHERY ANTELOPE HUNTING SEASON AS PROPOSED. Motion carried unanimously.

### **Custer State Park Antelope Hunting Season**

Switzer presented the proposed changes to the Custer State Park antelope hunting season indicating the only recommended change from the previous year is to Adjust the number of resident licenses from no more than 3 one-tag any antelope licenses to zero one-tag antelope licenses; close the season.

Motioned by Dennert with second by Phillips TO APPROVE THE CUSTER STATE PARK ANTELOPE HUNTING SEASON AS PROPOSED. Motion carried unanimously.

Switzer presented the administrative action for the antelope hunting season unit licenses and access permit allocations for the 2017 – 2018 seasons.

Motioned by Olson with second by G. Jensen TO APPROVE THE INCREASE OF THE FEES FOR TROPHY AND NONTROPHY BISION HARVESTS IN CUSTER STATE PARK 41:06:02. Motion carried unanimously

### Authorization for Terminally Ill to Hunt

Tom Kirschenmann, assistant wildlife director, presented the requested amendment to the rules governing the issuance of permits allowing terminally ill residents to make application for a permit to take one antelope, turkey and/or deer as authorized by the Department Secretary. The rule change would allow the Secretary to authorize a terminally ill resident to hunt and take the above species outside established hunting season dates should the person's illness advance to a point justifying this special allowance.

Motioned by Dennert with second by Phillips TO APPROVE THE CHANGES TO 41:06:01 ALLOWING TERMINALLY ILL RESIDENT HUNTERS TO HUNT OUTSIDE THE ESTABLISHED SEASON PER SECRETARY AUTHORIZATION. Motion carried unanimously.

### East River Deer Hunting Season

Switzer presented the recommended changes to the east river deer hunting season as specified below noting the recommended changes from the proposal.

1. Adjust resident license numbers from no more than 17,505 one-tag, 10,175 two-tag and 1,400 three-tag deer licenses to 21,085 one-tag, 5,250 two-tag and zero three-tag deer licenses.
2. Create a new Limited Access Unit (Unit 13L) in Brule County that would be restricted to Corp of Engineers property, all Game Production Areas, and the Elm Creek Lakeside Use Area immediately adjacent to the Missouri River, and the Pease Game Production Area in southwest Buffalo County (see map). This unit is all public land and landowner preference does not apply.
3. Modify Unit 13A to include all of Brule County excluding that portion within Unit 13L.
4. Modify Unit 14A to include all of Buffalo County excluding the Pease Game Production Area within Unit 13L.

Year	Buck Tags	Doe Tags	Total Tags
2016	19,955	22,100	42,055
2017-2018	18,870	12,715	31,585

Buck Tags (-5%)  
Doe Tags (-44%)

### Recommended change from proposal presented by Switzer

1. Modify proposed Unit 13L to portions of the Brule Bottom Game Production Area and Corp of Engineers area lands north of 240<sup>th</sup> Street including the Pease Game Production Area in southwest Buffalo County and Boyer Game Production Area and Corp of Engineer area lands west of 342<sup>nd</sup> Avenue, south of 255<sup>th</sup> street and Canyon Road, and south of a line extending from 256<sup>th</sup> Street west to the Missouri River. This unit is all public land. Landowner preference does not apply.
2. Adjust resident license numbers from no more than 17,505 one-tag, 10,175 two take and 1,400 three-tag deer licenses to no more than 21,075 one-tag, 5,250 two-tag and zero three-tag licenses.

Motioned by Dennert with second by Sharp TO AMEND THE PROPOSAL AS PRESENTED FOR THE EAST RIVER DEER HUNTING SEASON. Motion carried unanimously.

Motioned by B. Jensen with second by Dennert TO APPROVE THE CHANGES TO 41:06:21 AND 41:06:01 THE EAST RIVER DEER HUNTING SEASON AS AMENDED. Motion carried unanimously.



Motioned by Sharp with second by Phillips TO APPROVE THE CHANGES TO THE CUSTER STATE PARK DEER HUNTING SEASON AS RECOMMENDED 41:06:41. Motion carried unanimously.

**Refuge Deer Hunting Season**

Switzer presented the recommended changes to the refuge deer hunting season as specified below.

1. For Lacreek National Wildlife Refuge, adjust the number of resident licenses from no more than 20 one-tag deer licenses to no more than 25 one-tag licenses.
2. For Waubay National Wildlife Refuge, adjust the number of resident licenses from no more than 30 one-tag deer licenses to no more than 20 one-tag licenses.
3. All licenses within Waubay National Wildlife Refuge are restricted to muzzleloading rifles.

Motioned by Dennert with second by Olson TO APPROVE THE CHANGES TO THE REFUGE DEER HUNTING SEASON 41:06:36 AS RECOMMENDED. Motion carried unanimously.

**Archery Deer Hunting Season**

Switzer presented the recommended changes to the archery deer hunting season as specified below noting the changes from proposal

1. For Unit ARD-LM1, close units 17A, 25A, 41A, 50A, and 58A and open units 44A and 62A.
2. Extend the end date for archery deer hunting in Sand Lake NWR from December 31 to January 15.

2017-2018

Designated Area	Number of Access Permits		
	Any Deer	Antlerless Whitetail Deer	Total
Adams Homestead and Nature Preserve	5	25	30
Good Earth State Park	5	0	5

Recommended changes from proposal to close unit 13L for unit ARD-LM1.

Motioned by G. Jensen with second by B. Jensen TO APPROVE THE AMENDED CHANGES TO THE ARCHERY DEER HUNTING SEASON 41:06:22 AS RECOMMENDED. Motion carried unanimously.

Motioned by Boyd with second by B. Jensen TO APPROVE THE CHANGES TO THE ARCHERY DEER HUNTING SEASON AS PROPOSED. Motion carried unanimously.

**Muzzleloader Deer Hunting Season**

Switzer presented the recommended changes to the muzzleloader deer hunting season for unit MZD-LM1, closing units 17A, 25A, 41A, 50A and 58A and open units 44A and 62A to mirror the antlerless season noting the recommended change from the proposal to close unit 13L for unit MZD-LM1.

Motioned by Dennert with second by Sharp TO APPROVE THE CHANGE TO THE PROPOSAL CLOSING 13L FOR UNIT MZD-LM1. Motion carried unanimously.

G. Jensen then did a review of history on the contentious issue beginning in April 2017 when the Commission was presented with two different ideas. One to raise nonresident waterfowl numbers to double, and the second to reduce the nonresident waterfowl numbers by half or more. At that time the Commission decided to draft its own proposal that was more middle of the road. It was presented to the public and open for comments. Then in May due to comments received, changes were made to the Commissions proposed changes. . At the May meeting in Custer the Commission revised the proposal to reduce the allocation of 2000 temporary licenses by 250, and distributed them in the existing and newly proposed units.. After the proposed changes were made it was then sent out to the public for comments and meetings were held with groups and individuals that were advocates of both increasing and reducing the number of licenses available. Again numerous public comments were received and reviewed by the Commission noting the need to emphasize not increasing the numbers of 3-day licenses. G. Jensen then proposed an amendment to adjust the proposed allocations . He also noted another key part is that everyone has agreed that we would get together to develop objective scientific data to make decisions going forward. He also stated South Dakota is the only state that limits nonresident waterfowl licenses like this. He thinks the current proposal is a good and fair compromise and said there is always room for revisions going forward.

Motioned by G. Jensen with second by Phillips to amend the current proposal for nonresident waterfowl licenses. Motion carried unanimously.

Commissioner Olson thanked Commissioner G. Jensen for the effort he put into this very difficult process including emails, phone calls and public interaction. He said to keep in mind that compromise is good considering recent legislation sought to add 3000 more nonresident waterfowl hunters in the pool when overcrowding is already a problem.

Commissioner Olson inquired about the 250 licenses in proposed new unit asking if they have to indicate dates and location for hunting when they are applied for.

Tom Kirschenmann stated they do.

Olson would like to see this closely monitored stating he thinks we will then see complaints from resident hunters. Then maybe see three sets of dates to avoid a rush of hunters.

Commissioner B. Jensen inquired if all dates are removed and about private and public license allocations.

G. Jensen clarified the areas for restricted dates and where private and public licenses will be available.

Kirschenmann stated this should appease those concerned about the agreement made previously and allocation for Missouri river unit.

Tony Leif, wildlife division director, said modifications to 3 day licenses were made by legislation presented by Representative Werner. The revised proposal will balance license demand and hunter concentrations and restore the Missouri river unit. He noted drawing more lines on the map is not always a good, thing but is sometimes what needs to be done to meet the requests of the people.

cottonwoods, 525 acres of productive agricultural land, Mud Lake and native grass restoration. She said they provide recreation and education programs which include a trail system for hiking, biking, and cross country skiing; wildlife watching opportunities, hunting and environmental education programs including school field trips, summer camps and public programs with annual visitation at 36,000. Moats said that in effort to bring children and parents outside by way of unstructured play they are creating the cottonwood playground. The design is unique and will complement the park with a customer glass fiber playground, treelike structure and other naturesque pieces. Moats stated they have received excellent support from the community with great fundraising efforts thus far with work continuing and hope to have playground by August for 20th anniversary.

### **Parks Revenue and Camping Reservation Report**

Bob Schneider, assistant parks and recreation director, provided the park revenue and camping reservation report. The report includes a year to date comparison of revenue by line and May 2017 year to date comparison by district item. Schneider noted overall revenue is up 6 percent although trail revenue was down 23 percent as the weather in May was not conducive for biking. He also stated camping was up 7 percent while visitation was down 1 percent.

### **DIVISION OF WILDLIFE**

#### **Land Acquisition Projects**

Paul Coughlin, habitat program administrator provided a request to acquire the Costlow Property located in Lake County. The property consists of 0.8 acres at a cost of \$79,000 to be utilized as a Public water access area addition to the Payne water access area at Lake Madison.

Motioned by G. Jensen with second by Dennert TO ADOPT RESOLUTION 17-07(Appendix A) AUTHORIZING AND CONFIRMING THE PURCHASE OF 0.8 ACRES IN LAKE COUNTY. Motion carried

Coughlin also provided the list of proposed land acquisitions projects in early development including the Northwest Day County property consisting of 783 acres to be used as a GPA, the Addition to Bitter Lake property consisting of 580 acres to be used as a GPA and the North Sanborn GPA property inholding consisting of 1.13 acres. Coughlin also provided information on the Barrett property currently being leased as a parking lot at Lake St. John in Hamlin County which will be brought before the Commission at the July meeting to accept as a donation.

#### **Waterfowl Season Structure**

Tom Kirschenmann provided a powerpoint presentation on the waterfowl season structure detailing the 2016 duck limits and zone/splits explaining how they are part of the federal framework and what the states are allowed to do within the federal framework for setting seasons. He then provided information on duck zones in the surrounding states of North Dakota, Nebraska, Minnesota and Iowa discussing the pros and cons of how they have their utilize their splits based upon their zone set up.

#### **Sportsmen Against Hunger**

Tom Kirschenmann presented the annual summary information that was provided last month to the Sportsmen Against Hunger board. The summary indicated the majority of donations come from east and west river deer hunting antlerless licenses. The counties with the largest number of donations all have units with

Andy Lindbloom, senior wildlife biologist, explained the process to develop the plan and the public input process

### **Sage Grouse Population and Management Plan Update**

Travis Runia, senior wildlife biologist, presented the Commission a powerpoint on the sage grouse population and management plan update which indicated a reduction in the counts from 280 to 218. They are finding low survival due to drought. He said the current population level is still better than where we were a few years ago. Runia indicated they are working to look at population and interface data with other states. He also said placing cameras at nest sites to identify predators and impacts of west Nile virus will be helpful information.

Dennert inquired of forty sold what about the 10 people who didn't hunt as it appears lots of applicants that could have hunted did not.

Runia said we do not ask the specific reason, but some will volunteer the reason. It is only expect that half to 75 percent of people who draw actually hunt.

Peterson asked if staff take into consideration with all seasons that some do not hunt.

Switzer responded yes.

### **Antelope Population and Management Plan Update**

Andy Lindbloom presented a powerpoint presentation on the antelope population and management plan update. He detailed biological surveys, season statistics, winter severity index and population objectives. Lindbloom noted harvest and success has increased and recruitment has been stable with a slight increase with surveys suggesting an approximate 15 percent annual growth rate of adults over the last 2 years. Lindbloom stated the current management plan is for 2014-2018 with revisions beginning next summer. He noted potential revisions topics and population objectives.

### **License Sales Update**

Scott Simpson, wildlife administration chief, provided the license sales report as of May 30 for all resident and nonresidents for all license types. Simpson said annual fishing license sales are down two percent and nonresident annual fishing licenses sales are down even more with a decrease of five and a half percent which is most likely impacted by nonmeandered waters issues.

### **Solicitation of Agenda Items from Commissioners**

No new agenda items were requested at this time.

Hepler thanked the Commission, staff and especially Commissioner G. Jensen for the work done in regards to nonresident waterfowl.

Leif introduce Mike Klosowski as the new wildlife regional supervisor in the northeast.

### **Adjourn**

Motioned by Sharp with second by Jensen TO ADJOURN THE MEETING. Motion carried unanimously and the meeting adjourned at 11:30 a.m.

Appendix B

2017-2018 BLACK HILLS DEER

Unit	Resident Licenses			Nonresident Licenses			License Totals									
	Any Deer	Any WT	Antlerless WT	Any Deer	Any WT	Antlerless WT	RE S	RE S	RE S	RE S	NR	NR	N R	NR		
	01	11	13	01	11	13	1-tag	2-tag	Lic	Tags	1-tag	2-tag	Lic	Tags		
BD1	0	0	500	0	0	40	500	0	500	500	40	0	40	40		
BD2	0	0	100	0	0	8	100	0	100	100	8	0	8	8		
BH1	200	3,500	0	16	280	0	3,700	0	3,700	3,700	0	0	296	0	29	296
TOTAL	200	3,500	600	16	280	48	4,300	0	4,300	4,300	344	0	344	344		
Unit	Any Deer	Any WT	Antlerless WT	Any Deer	Any WT	Antlerless WT	RE S	RE S	RE S	RE S	NR	NR	N R	NR		
	01	11	13	01	11	13	1-tag	2-tag	Lic	Tags	1-tag	2-tag	Lic	Tags		
RES and NR:							4,644	0	4,644	4,644						

2016 VS 2017-2018 COMPARISON

Resident Licenses												
Unit	Any Deer				Any Whitetail				Antlerless Whitetail			
	Year		Change		Year		Change		Year		Change	
	2016	2017-2018	#	%	2016	2017-2018	#	%	2016	2017-2018	#	%
BD1									300	500	200	67%
BD2									100	100	0	0%
BH1	200	200	0	0%	3,500	3,500	0	0%				
TOTAL	200	200	0	0%	3,500	3,500	0	0%	400	600	200	50%

Note: An additional 8% of the number of licenses will be available to nonresidents.

2017-2018 EAST RIVER DEER

Unit #	Unit Name	Resident Licenses							
		AnyD	AtID	AD+AtID	2 AtID	AnyW	AtIW	AW+AtIW	2 AtIW
		01	03	08	09	11	13	18	19
01A	Minnehaha	450	100						
03A	Brown	1,100	1,300						
04A	Beadle					500	100		
05A	Codington	250							
06A	Brookings	450	100						
07A	Yankton	250							
07B	Yankton		75						
08A	Davison					200			
10A	Aurora					350	200		
12A	Bon Homme	150							
12B	Bon Homme						50		

06A	Brookings	550	550	0	0%	550	550	0	0%
07A	Yankton	250	250	0	0%	250	250	0	0%
07B	Yankton	75	75	0	0%	75	75	0	0%
08A	Davison	300	200	-100	-33%	300	200	-100	-33%
10A	Aurora	950	550	-400	-42%	1,650	550	-1,100	-67%
12A	Bon Homme	200	150	-50	-25%	200	150	-50	-25%
12B	Bon Homme	50	50	0	0%	50	50	0	0%
13A	Brule	1,150	900	-250	-22%	2,000	1,100	-900	-45%
13L	Brule	0	20	20	NA	0	20	20	NA
14A	Buffalo	400	350	-50	-13%	700	600	-100	-14%
16A	Campbell	720	720	0	0%	1,420	720	-700	-49%
17A	Charles Mix	550	250	-300	-55%	550	250	-300	-55%
18A	Clark	600	600	0	0%	600	600	0	0%
19A	Clay	200	200	0	0%	200	200	0	0%
22A	Day	600	600	0	0%	600	600	0	0%
23A	Deuel	400	400	0	0%	400	400	0	0%
25A	Douglas	325	150	-175	-54%	325	150	-175	-54%
26A	Edmunds	1,300	1,300	0	0%	2,600	2,600	0	0%
28A	Faulk	1,400	1,400	0	0%	4,200	2,800	-1,400	-33%
29A	Grant	300	300	0	0%	300	300	0	0%
32A	Hamlin	600	600	0	0%	600	600	0	0%
33A	Hand	870	870	0	0%	1,720	870	-850	-49%
34A	Hanson	300	200	-100	-33%	300	200	-100	-33%
36A	Hughes	600	600	0	0%	775	600	-175	-23%
37A	Hutchinson	100	100	0	0%	100	100	0	0%
38A	Hyde	920	720	-200	-22%	1,820	1,420	-400	-22%
40A	Jerauld	700	550	-150	-21%	1,300	550	-750	-58%
42A	Kingsbury	700	600	-100	-14%	700	600	-100	-14%
43A	Lake	450	400	-50	-11%	450	400	-50	-11%
44A	Lincoln	200	250	50	25%	200	250	50	25%
46A	McCook	450	450	0	0%	450	450	0	0%
47A	McPherson	1,000	1,000	0	0%	2,000	1,500	-500	-25%
48A	Marshall	500	500	0	0%	500	500	0	0%
51A	Miner	900	750	-150	-17%	950	750	-200	-21%
52A	Moody	450	450	0	0%	450	450	0	0%
54A	Potter	1,050	1,050	0	0%	1,950	1,950	0	0%
55A	Roberts	500	500	0	0%	500	500	0	0%
56A	Sanborn	900	550	-350	-39%	950	550	-400	-42%
57A	Spink	1,300	1,300	0	0%	1,300	1,300	0	0%
59A	Sully West	550	450	-100	-18%	950	450	-500	-53%
59B	Sully East	470	470	0	0%	920	470	-450	-49%
61A	Turner	100	100	0	0%	100	100	0	0%
62A	Union	250	300	50	20%	250	300	50	20%
63A	Walworth	750	750	0	0%	1,450	750	-700	-48%
	<b>TOTAL</b>	<b>29,080</b>	<b>26,325</b>	<b>-2,755</b>	<b>-9%</b>	<b>42,055</b>	<b>31,575</b>	<b>-10,480</b>	<b>-25%</b>

### 2017-2018 REFUGE DEER

Unit	Resident Licenses			Nonresident Licenses			License Totals							
	Any D	Any Atl D	2 Any Atl D	Any D	Any Atl D	2 Any Atl D	RES	RES	RES	RES	NR	NR	NR	NR
	01	03	09	01	03	09	1-tag	2-tag	Li C	Tags	1-tag	2-tag	Lic	Tags

### STATE PARK ARCHERY ACCESS PERMITS 2017-2018

Designated Area	Number of Access Permits		
	Any Deer	Antlerless Whitetail Deer	Total
Adams Homestead and Nature Preserve	5	25	30
Good Earth State Park	5	0	5

### 2016 VS 2017-2018 COMPARISON

Designated Area	Number of Access Permits		
	Any Deer	Antlerless Whitetail Deer	Total
2016 Adams Homestead and Nature Preserve	5	25	30
2017-2018 Adams Homestead and Nature Preserve	5	25	30
2016 Good Earth State Park	5	0	5
2017-2018 Good Earth State Park	5	0	5

### MUZZLELOADER DEER SEASON 2017-2018

	Resident	
	Any Deer Licenses	Any Deer Tags
Statewide	1,000	1,000
<b>Total</b>	<b>1,000</b>	<b>1,000</b>

### 2016 VS 2017-2018 COMPARISON

	Resident	
	Any Deer Licenses	Any Deer Tags
2016 Statewide	1,000	1,000
2017-2018 Statewide	1,000	1,000

### CUSTER STATE PARK DEER 2017-2018

Unit	Resident Licenses		
	Any Deer	Any Whitetail	Antlerless Whitetail
	01	11	13
CUD-1	5	29	0
CUD-2	0	0	30

53C	Perkins	500				400	300	40	0	0	0	32	24
58A	Stanley	100		100				8	0	8	0	0	0
58D	Stanley	5	5					1	1	0	0	0	0
60A	Tripp	400		700	250			32	0	56	20	0	0
64A	Ziebach	300		200				24	0	16	0	0	0
65A	Oglala Lakota	100						8	0	0	0	0	0
67A	Todd	150						12	0	0	0	0	0
	<b>TOTAL</b>	<b>7,390</b>	<b>5</b>	<b>6,385</b>	<b>1,560</b>	<b>2,400</b>	<b>920</b>	<b>593</b>	<b>1</b>	<b>512</b>	<b>5</b>	<b>192</b>	<b>74</b>
<b>Unit #</b>	<b>Unit Name</b>	<b>Any D 01</b>	<b>Atl D 03</b>	<b>Any W 11</b>	<b>Atl W 13</b>	<b>AW+At IW 18</b>	<b>2 AtIW 19</b>	<b>Any D 01</b>	<b>Atl D 03</b>	<b>Any W 11</b>	<b>Atl W 13</b>	<b>AW+At IW 18</b>	<b>2 AtIW 19</b>

### 2018 WEST RIVER DEER

Unit #	Unit Name	Resident Licenses						Nonresident Licenses						License Totals							
		Any D 01	At ID 03	Any W 11	Atl W 13	AW+At IW 18	2 AtIW 19	Any D 01	At ID 03	Any W 11	Atl W 13	AW+At IW 18	2 AtIW 19	RES 1-tag	RES 2-tag	RES Licenses	RES Tags	NR 1-tag	NR 2-tag	NR Licenses	NR Tags
02 A	Pennington	40				200		32	0	0	0	16	0	400	20	600	800	32	16	48	64
02 C	Pennington	10		50				8	0	4	0	0	0	150	0	150	150	12	0	12	12
11 A	Bennett	15		10				12	0	8	0	0	0	250	0	250	250	20	0	20	20
11 B	Bennett	10		12				8	0	10	0	0	0	225	0	225	225	18	0	18	18
15 A	Butte	20				650	250	16	0	0	0	52	20	200	90	1,100	2,000	16	72	88	160
15 B	Butte	15				500	150	12	0	0	0	40	12	150	65	800	1,450	12	52	64	116
20 A	Corson	10		30				8	0	24	0	0	0	400	0	400	400	32	0	32	32
21 A	Custer	10		20				8	0	16	0	0	0	300	0	300	300	24	0	24	24
21 B	Custer	10		50	50			8	0	4	4	0	0	200	0	200	200	16	0	16	16
24 A	Dewey	10		25	10			8	0	20	8	0	0	450	0	450	450	36	0	36	36
24 B	Little Moreau			10	10			0	0	1	1	0	0	20	0	20	20	2	0	2	2
27 A	Fall River	10						8	0	0	0	0	0	100	0	100	100	8	0	8	8
27 B	Fall River	20		20	10			16	0	16	8	0	0	500	0	500	500	40	0	40	40
27 L	Fall River	10		10				1	0	1	0	0	0	20	0	20	20	2	0	2	2
30 A	Gregory	50		1,000		200		4	0	80	0	16	0	105	20	1,250	1,450	84	16	100	116
31 A	Haakon	60		15	0			48	0	12	8	0	0	850	0	850	850	68	0	68	68
35 A	Harding	30		30	25			24	0	24	20	0	0	850	0	850	850	68	0	68	68
35 C	Harding	10		30	25			8	0	24	20	0	0	650	0	650	650	52	0	52	52
35 L	Harding	12		5				10	0	0	0	0	0	125	0	125	125	10	0	10	10
39 A	Jackson	15		10				12	0	8	0	0	0	250	0	250	250	20	0	20	20
39 B	Jackson	25		15				20	0	12	0	0	0	400	0	400	400	32	0	32	32
41 A	Jones	15		30				12	0	24	0	0	0	450	0	450	450	36	0	36	36
45 A	Lyman	10		45		100		8	0	36	0	8	0	550	10	650	750	44	8	52	60
45 B	Lyman	50		20				4	0	16	0	0	0	250	0	250	250	20	0	20	20
45 C	Lyman	30				20		3	0	0	0	0	2	30	20	50	70	3	2	5	7
45 D	Lyman	20		40				2	0	4	0	0	0	60	0	60	60	6	0	6	6
49 A	Meade	70		25	15			56	0	20	12	0	0	110	0	1,100	1,100	88	0	88	88
49 B	Meade	70		40	30			56	0	32	24	0	0	140	0	1,400	1,400	11	0	112	112
50 A	Mellette	40		45				32	0	36	0	0	0	850	0	850	850	68	0	68	68
53 A	Perkins	30				350	200	24	0	0	0	28	16	300	55	850	1,400	24	44	68	112
53 C	Perkins	50				400	300	40	0	0	0	32	24	500	70	1,200	1,900	40	56	96	152
58 A	Stanley	10		10				8	0	8	0	0	0	200	0	200	200	16	0	16	16



64A	Ziebach	500	500	0	0%	500	500	0
65A	Oglala Lakota	75	100	25	33%	75	100	25
67A	Todd	150	150	0	0%	150	150	0
	<b>TOTAL</b>	<b>19,765</b>	<b>18,660</b>	<b>-1,105</b>	<b>-6%</b>	<b>25,185</b>	<b>21,980</b>	<b>-3,205</b>

Note: An additional 8% of the number of licenses will be available to nonresidents.

business opportunities. The first season is good for older people and youth due to the milder climate. It is not in the best interest of Gregory County to discontinue the split season. He would like to see special buck tags issued addressed and change to allow from 500 to 1000 for residents and 500 to 1000 for nonresidents.

Representative Lee Qualm, Platte, SD, has received numerous phone calls that they do not want the split season removed and would put too many people in the field at one time.

Paul Tual, Herrick, SD, would like to keep the split season

Bob Waterbury, Herrick, SD, as a lifelong resident of Gregory County and outfitter for 30 year says the split season provides opportunity. He has been a part of the stakeholder workgroup and did not recall removal of the split season being mentioned once. He doesn't understand why this would be done and can't think of a good reason to remove the split season.

Rogers Wiltzs, Wagner, SD, as a writer for an outdoor column he knows how the people feel. His first concern for the split season is he hopes there is a good reason to split the season. He feels for people in the area and for himself. He says the commission needs to look at people who go multiple years without drawing a tag.

Chuck Bergman, Sioux Falls, SD, emailed "I am writing in response to the news that the commission is considering to stop the split season for west river deer in Mellette an Gregory Co. I have hunted in these counties now for 15+ years an the split is the main reason I do hunt them. With the split seasons the amount of hunters on public lands is tolerable but if they are combined then they double. I an many others have spent many days before season out driving an knocking on doors to try an find a private place to hunt but I just can't afford the prices if it is allowed. I know many of the ranchers out there that have allowed me to hunt turkeys an antelope but deer are a no go. My kids are now just starting to get into hunting an I was loving the fact that they may benefit from this split season due to the fact that there may not be 500 people out there fighting for the same 5 pieces of public land. I hope you reconsider your plan cause I would hate to see a good thing come to an end. Thanks for your consideration."

Russ A. Walz, Sioux Falls, SD, emailed" I'm writing to convey my desire to continue the split seasons for Mellette and Gregory counties. Merging the seasons will result in too many hunters competing for the same hunting grounds. I would like to see the split season remain as it has been for many years. Thanks"

Bill O'Neill, Gaylord, MI, emailed" Please see attached letter regarding the proposed season dates for the 2017 and 2018 West River deer hunting seasons. As the letter states I am asking you to reconsider the proposal and include a split season. Reducing to one period season will result in far fewer out of state hunters. South Dakota Game, Fish and Parks (GFP) Commission, I would like to start by complimenting your deer management efforts and habitat enhancement in the West River Region. I was privileged to participate in a West River early season hunt last year and found the management and quality of the hunting excellent, even with the disease challenges you faced. You and your landowners have combined to provide a truly excellent hunting opportunity. I am also writing to express my concerns with The South Dakota Game, Fish and Parks (GFP) Commission's proposal to change the West River hunt dates which eliminates the split season and reduces the season to one period. I

Brad Beavers, Jefferson, SD, emailed" I am a west river and east river landowner. I am strongly opposed to the termination of the split Gregory county deer season. I own and operate a ranch in Gregory Co. I allow hunters on my property but only let one group on at a time. By doing away with this season there will be one group that won't be able to hunt. They plan their vacations a year in advance and already have the time off this year. I also know people that hunt the public areas and they have already made Motel reservations for this year for the early season. With the number of hunters on the limited amount of public land I feel it will be a total total disaster for public land hunters/landowners to have them all in the field during one season. Another item I feel needs addressed is the antlerless season in both east and west river. This includes muzzleloader,youth and bow. Some of these seasons extend until the middle of January. By then they are shooting a lot of bucks that have shed their antlers. Please look at closing these seasons the end of the year. Thank You"

Ken Krieger, Burke, SD, emailed" Discontinuing the traditional 2017 split deer hunting seasons for Gregory and Mellette Counties is not a good idea and is not in the best interests of deer hunters, land owners and County residents. Once again, land owners and deer hunters are caught in the middle of this proposal with the GF&P's "we don't care attitude." Someone surely isn't thinking clearly ... when the GF&P has all ready sold the 2017 Special Buck licenses, hunters have the tag in hand, planned their hunt (many of them for the first traditional deer season in the counties mentioned with land owner permission) and then the GF&P proposes closing the first season. What do private land owners tell the Special Buck hunters that were lucky enough to draw the tag, have taken their vacation time a year in advance to deer hunt and are planning to hunt the first four days of the traditional first season in 2017 in Gregory and Mellette counties if the season is discontinued? The first season hunters will not have a place to hunt in the second season if land owner have other guys hunting at that time. Is the GF&P willing to give these Special Buck hunters with no place to hunt their money back for the license? Please see additional comments in my attached file on the negative economic effects closing the first season will have for the counties ... mainly Gregory County. I would urge you to vote to continue the traditional split deer hunting season for Gregory and Mellette Counties for 2017 and beyond. I am sending my written comments to you about the proposed 2017 discontinue of the split deer hunting season for Gregory County West River Deer. This is certainly not a good idea and in not in the best interests of Gregory County residents. I would urge you to vote to continue the traditional split deer hunting season for Gregory County in 2017 and beyond. The GF&P has already sold and sent out the 2017 Special Buck licenses to hunters. There are many Special Buck hunters with tags in hand that are planning to hunt in 2017 in the first four days of the traditional Gregory County split deer hunting season. Land owners have given these hunters their consent to hunt and the hunters have put the land owners name and phone number down on the Special Buck applications as a requirement for applying for the tag. What do private land owners tell the Special Buck hunters that were lucky enough to draw the tag, have taken their vacation time a year in advance to deer hunt and are planning to hunt the first four days of the traditional deer hunting season of 2017 in Gregory County if the season is discontinued? Is the GF&P willing to give these Special Buck hunters their money back? Someone surely isn't thinking clearly here ... when the GF&P has already sold the 2017 Special Buck licenses, guys have a tag in hand, planned their hunt and then the GF&P and Game Commission discontinues the split deer hunting season in Gregory County. Private land owners in Gregory County will not have room for all the sportsmen planning to hunt deer in 2017 if everyone is put into one season. Especially if they have given other sportsmen permission to hunt in the second season of our traditional split deer hunting

personally am not a deer hunter and, although my family farms, we don't take part in commercial hunting. I am sending this letter from my perspective as an Ag and Commercial Loan Officer. Our local businesses depend upon two primary industries to survive - agriculture and hunting. Many of our businesses need both industries to prosper in order to survive as we have little else to offer in our rural and somewhat desolate communities. Additionally, property values in our communities are extremely reliant upon agriculture and the hunting industry. Property values need to hold in order for many of our residents to be able to obtain financing for a variety of things. When the number of hunting licenses or tags are cut, or when a season is shortened or eliminated in any way, it has a direct impact on local businesses. In small communities like those in Gregory County and the surrounding area, every sales transaction matters. The proposal would reduce the amount of non-local traffic in our communities. Additionally, there are even larger impacts that could be felt over the course of several years - property values may decline as a result (both rural ag properties with hunting habitat as well as residential properties) because hunters and commercial hunting operations are often major players in land purchases. When we order certified appraisals for real estate loans, hunting impact is often cited in the appraisal and likely contributes positively to the appraised value of most properties. Gregory County has a lot of excellent deer habitat. Deer are thriving in this area. The split deer season with the earlier opener has been around a long time, and our deer numbers are plentiful. I do not see a "good" reason for adjusting the seasons in Gregory County. I do feel that the impacts felt within the communities in our area will only be negative if you decide to eliminate the earlier opener. The longer we can have hunters around, the more goods and services those in the communities can provide to the hunters (which also increases tax revenue). Please consider the issues I've addressed in this brief letter. I know I have heard other arguments for leaving things alone, but I have concentrated on addressing those issues which will adversely affect the financial positions of many within our communities."

Shon Ford, Miller, SD emailed" I am writing in response to the proposed elimination of the early Deer season for Mellette county. Please do not eliminate this season. This season, much like east river counties pheasant season, holds a long standing tradition for myself and hopefully my daughters as well. It is the first date marked on the new calendar every year and it is responsible for many cherished relationships I would not enjoy today if this season was eliminated. I understand fully the many aspects of a decision like this. I also understand that in South Dakota tradition weighs heavy on decisions your department makes. My children are now old enough to start traveling with me on this trip and have been looking forward to it as long as they've know what it is. This is the most important aspect of my writing. I could go on and on attempting to justify leaving the season alone but I'm sure others have issues as well. Thank you for your time and consideration."

**Black Hills Deer Hunting Season**

No oral or written testimony was received

**Custer State Park Deer Hunting Season**

No oral or written testimony was received

**Refuge Deer Hunting Season**

No oral or written testimony was received

**Archery Deer Hunting Season**

pressure. Then season has opened in September and has helped alleviate the pressure. This shows that birds will adapt and move. He is not against nonresident hunting and stated waterfowl is way different than fish and pheasant and you cannot stock them. Paulson said he was offered a place to hunt by landowner in which from Sunday to Friday 19 hunters stopped to ask permission 2 residents and 17 nonresident.

President of South Dakota Waterfowl Association feels for this issue and opposes this proposal for the same reasons as the last two hunters. This proposal does not help resident hunters it adds 250 licenses to eastern South Dakota which is already overcrowded and the other 500 will go to areas like Brown County that are already over pressured. Need reason like waterfowl hunting to keep retired people to stay and keep the youth here. If you continue to reduce the quality of outdoor activities the youth will leave. Hotel owners spoke to free money this brings in. Russo continue to go back to legislature when they do not get their way while his organization continues to work with the Commission as they should. This is not the best thing to do for resident hunters.

Bill Koupal, Pierre, SD, would like to compliment what the Commission has done in the past with the use of science and data using good information to make decisions. He spoke with Commissioner G. Jensen and was assured that GFP wants to do some surveys to utilize data to make decisions. Inquired what data and research is being used that shows the decisions to increase nonresident water fowlers to be relevant. Koupal said this proposal has no scientific basis and is driven by other factors which are political pressure. He urged the Commission to ask themselves where the data is and what is driving out decision.

George Vandell, Pierre, SD, would like the Commission to consider the impact of decisions on duck hunting and what will it be positive, neutral or negative. Only positive will be for flatlands flyways and businesses who are already getting business. He said there is a myth that there is all this water and all these ducks, but in the age of cell phones ducks and hunters concentrate. This will result in more hunters in the northeast making it tougher for residents and make more competition and will lose more duck hunters as it will be difficult to find a place to have a good hunt without pressure. In conclusion the proposal will be negative.

Bobby Cox, Ipswich, SD, moved to South Dakota in 2002 for quality waterfowl hunting and said restrictions make waterfowl hunting good. Cox says the issue does not have a right or wrong answer noting where do you draw the line in the sand to make the most people happy. It's not like adding seats to a stadium. When you have too many people it detracts from the quality of hunting. In the past he commuted 120 to work out of state and come to South Dakota to hunt waterfowl. He said he will probably move if he loses quality waterfowl hunting.

Dick Werner, Herreid, SD, said he does not consider himself an authority on the issue but has done considerable amount of research and sponsored legislation. Commends the Commission for looking at options. He reviewed each proposal. He said we need to honor agreement made in the past and to move Brown County from east to the west and leave Brown and Spink Counties together or split at highway 212 taking flight patterns into considerations. He also agrees to preserve licenses for late season hunting. Werner said last year increase licenses was 253 and commended staff for their accurate estimate. He also asked not to reduce 250, and to either move them or keep current allocation in NE. He would also like licenses in Y to only be valid in private land and Need to leave public land as is.

Pierre with private guides. North Dakota is looking and sounding better all the time. Thank you for your time.

Wade Kouril, Higginsville MO, emailed" Good afternoon, I am a South Dakota born and raised waterfowl hunter who now lives in Missouri. I would like to share my opinion on this topic. I now have 2 teenage sons who also love waterfowl and pheasant hunting like I do. Last year, I bought an adult pheasant license, youth pheasant license, and was drawn for the NR waterfowl license for myself and 1 son. We as a family look forward to making this a tradition once a year to return to my SD roots, visit friends and family, and harvest pheasants and waterfowl. This year both of my sons will be eligible to hunt, but the cost of the NR waterfowl licenses make it pretty hard to afford since there is not a discount for youth. I would absolutely love to apply for the 3-day waterfowl license and would encourage you to add more 3-day or replace some of the 10-day licenses. Assuming the 3-day is less expensive than the 10-day, this would most likely make it more affordable for us to do. I understand the responsibility to not "over-hunt" waterfowl on their breeding grounds, but I would guess a large percentage of people that purchase the 10-day would be satisfied with a 3-day. If you charged (for the 3-day) 55% of what a 10-day license costs; and reduced the number of 10-days but added double that same number of 3-days, you would be money ahead and have sold less "hunting days". Of course you can play with the figures, but my point is that I think a good number of your NR customers would rather purchase the 3-day as it's more affordable and we don't hunt more than 3 days anyways. A discount for youth waterfowl should also be considered into the process. Missouri charges non-residents \$11 per day for waterfowl; I'd gladly pay \$33 each for three 3-day licenses for myself and 2 teenage sons. In fact, I'd gladly pay twice that amount versus the \$121 each I paid last year for the 10-day. Thank you for considering this point of view. If nothing else, maybe add this to the year-end NR survey, "would you rather purchase a 3-day NR waterfowl license at X% of the price versus a 10-day with X number of available licenses versus the 10-day. Thanks again."

David Mines, Yankton SD, emailed:" I would like to comment on your revised non-resident waterfowl proposal. When will you get it through your head we don't want anymore non-residents hunting here. If I wanted to live in a state with too many people and depleted natural resources I would move to wherever all these people are from. I choose to live in a low population state with great hunting and fishing. Enough with the non-residents. Pheasant hunting has been ruined by out of state hunters, enough is enough."

Mitchell Reuss , Sioux Falls, SD, emailed" In regards to the nonresident license changes up for finalization on June 8th, I would like to provide the following comments for the record: I am opposed to any licenses being valid for private land only, unless there is a component attached that provides additional public access. Further, restricting these licenses to private land only promotes additional commercialization of waterfowl hunting, and could actually reduce access to residents and non residents alike. I am opposed to removing Brown County from NWR-00Y and adding it to NWR-00X. Brown County is a popular destination for nonresident hunters. The many existing 00Y licenses that previously would be used in Brown now would be used in the remaining 00Y counties, increasing the amount of hunters in those counties. Also, It only makes sense that hunters who enjoy Brown County would apply for the 500 unrestricted date licenses and likely continue to hunt there; so now you have a situation where pressure would continue to be the same in Brown County, but now also more pressure would be created in the remaining 00Y counties. At the same time, a majority of the proposed 500

residents and rich people can hunt it will be the end of hunting as the rest of the people will vote to ban it. The only people wanting more out of state licenses are the business people and lodges that cater to them. The rest of the people don't want them."

Eric Marquardt, Champlin, MN, emailed" Thanks you for all your work in trying to come up with a solution that supports both the resident and non-resident hunter. Migratory Waterfowl are a national if not continental resource and to continue to severely limit and further restrict the non-resident access is wrong on so many levels. You end up punishing yourself and the resident business owners, tax payers and hunters as the dollars spent by non-residents dwindle and are moved to other more non-res friendly states. You also pit the sportsmen and women against each other as the non-res is as much if not more responsible for the public land that produces much of the waterfowl as the SD resident is. My tax and sporting goods dollars buy those lands and my membership in PF, DU, Delta Waterfowl and other organizations do the same thing. Should I be asking my chapters and national reps to not invest in SD because they are so restrictive? That will come very quickly if proposals like this continue to be advanced. The reductions you are making to the current NWR-00X is almost certainly a 1,000 license reduction with the change to 500 after Dec 1st and the removal of 250 licenses to statewide. I completely understand that this license (in its form prior to last year) has not typically sold out, but as the eligible counties have expanded and the additional public land potential was added for the expanded counties, I expect that the allotment of 1,500 would be used over time. I see my self and my family/friends potentially buying 2 of these licenses every year possibly 3 if ducks are around late season. The removal of public land will cripple the license as the public land is the jewel of SD. I can honestly say in 25+ years of waterfowl hunting in Potter, Edmunds and Faulk County mainly on public land, I have never been in a situation where another hunter and I were trying to hunt the same WPA, in fact I rarely ever even see another waterfowl hunter, resident or non-resident, so the "over crowding", "non-res are chasing the birds away" lines are just that... lines of adult male bovine dung! All your licenses are restrictive and limit access to the non-res. Please reconsider keeping the license the same as proposed from last year's changes. Add in the additional counties and allow hunting on public lands as well as private, not many non-res hunters have access to private land. If you need to take 250 for statewide then do it, but don't mandate the Dec 1st deal when you know the odds are good that no waterfowl are in the state except maybe along the river, so very few would need the license then. Thanks for reading

Brandon Marquardt, Champlin MN, emailed" Thank you for all your work in trying to come up with a solution that supports both the resident and non-resident hunter. Migratory Waterfowl, I would consider a continental resource and continuing to drastically limit and restrict the non-resident access is a weird way to go about it. This new plan I would argue has bigger economic implications on South Dakota residents, tax payers and hunters as more non resident's will choose to hunt in more non - resident friendly states. Another argument could be made that non - resident's are more responsible for the public land that produces much of the waterfowl as the SD resident is. If proposals like this continue to happen more people will be asking their chapters (DU, PF, Delta Waterfowl) to not invest in SD based on the heavy restrictions, which is a likely outcome for the limited availability to the non resident with these changes. Myself and at least 5 members in our group apply and buy non -resident licenses every year and if birds are still around come Dec 1st then yes I'm all for that "late season" license as well. I can honestly say in my 12 years of hunting waterfowl in S.D. I have never had to compete with another group of hunters or had any issues with over crowding. The whole argument for "over - crowding" or non - resident's are chasing the



less, covering 263,000 acres that are off limits according to how the GFP understood the Supreme court ruling in the non-meandered water case and has presented it at the non-meandered water meetings. Those numbers are taken from the power point presentation created by the GFP staff and presented to the public. You talk about condensing pressure! Take away 588,000 acres of access, primarily in northeast South Dakota and you are talking some serious limitations on where water hunters can and cannot go. This part alone should be a big enough reason to not allow any increases anywhere to even be considered, let alone in one of the most pressured counties in the state! Granted some of those waterholes are in walk-in or CREP, but the huge majority will still be off limits. The pressure will be incredibly condensed! I'm not sure if you remember my testimony a couple of years ago at the previous non-resident waterfowl work group meetings. I stated another example of the significant pressure in the northeast. It was about 2-3 years ago now we were hunting up in the northeast part of the state. We hunted ducks in a field one Sunday morning and they went right back to the field Sunday evening. We asked the landowner, who is a family friend, if we could hunt there again the following Saturday if the birds were still around. They said yes. We stopped back the following Friday to scout and just make sure it was still ok to hunt. The birds were there again. We stopped again. The landowner said during the week they had 19 different people stop to ask permission for 1 field! 17 of them were from out of state! If that doesn't scream over pressured than I don't know what does. This is 100% the truth and it's what the whole area up in the northeast is turning into. Tons of people hunting the same flock of birds. It's gotten quite ridiculous. And also, for those two days we hunted up there, we had friends from out of state hunting with us, which leads me to my next point. Again I will reiterate this point as well, I am NOT against non-resident hunting. Like I've said before, I've had friends from a handful of different states that have come to South Dakota hunting. They should be allowed to come, within reason. Jacking up license numbers every single opportunity isn't the answer. Monkeying with "reallocations" to hide the fact that license numbers are increasing in pressured areas is not the answer. Licenses are, in my opinion after being out almost every weekend last fall hunting either birds or deer and watching the hunter traffic, significantly too high already. People are everywhere. Flashback to my previous letter talking about the guys hunting a refuge because that's all the birds they could find. I do think at this point a reduction is required, but to "compromise" I think a no change is necessary right now, but in the future I'd like to see the GFP propose a reduction of some quantity of licenses. Right now there are not that many hunters, percentage wise, that get denied when applying. Last year there were, for licenses available for use in Brown county in 00Y or 00B, 4,225 people were drawn with their first choice in the first draw. 793 were not (taken from the drawing statistics on the GFP website). Of the 5,018 applicants, that is a mere 15.8% that were not drawn. 84.2% of applicants who had 00Y and 00B as their first choice got to hunt in South Dakota. The most telling factor that pressure WILL increase in the Brown county area given the demand for the licenses as laid out previously is this statistic, in the 00X region from last year 1,500 licenses were available, 0% of applicants were unsuccessful. In fact, only 107 licenses in the first drawing as a first choice were given out and 1393 first drawing first choice licenses remained. That is a take rate of a mere 7.1%. That proves right there, you add the availability of these licenses to Brown county, or any other area for that matter, 92.9% of the licenses will be available for any new additional counties if trends continue and all license available to Brown County are sold out. Now you aren't talking Brown County being one of the most pressured counties in the state for nonresident waterfowl hunting, it would in all likelihood be THE #1 most pressured county in the state. An over pressured county already would become more pressured. Hunting would be completely ruined. If the 15.8% of people who get denied a license truly wanted to hunt in South



urge you to please vote against this proposal. It is not good news for waterfowl hunting in South Dakota.”

Chris Johnson, Claremont, SD, emailed” My name is Chris and I live near Claremont, SD. I'm opposed the most recent waterfowl proposal that would create 500 3-day licenses that could be used in Brown Co. on private land only. I'm actually opposed by large to Brown Co. to being moved from the current 3-day North East SD unit that now is in. Please leave Brown Co. where it is now. Knowing the area well I can only see this Brown Co. deal is to please one group of people and it no way to make decisions that effects the local hunters. Don't fix what isn't broken and leave Brown alone.”

Jason Long, Aberdeen, SD, emailed” As a life long resident of South Dakota I'm very sad to see once again the NR waterfowl license issue arise. Once again I'm opposed to any change in current license allocations. I have chosen to stay in the area largely for the waterfowl hunting the area provides. Over the last 15 years the ability to access private hunting land in Brown Co. and other counties near by has gotten very hard. I grew up hunting the Sand Lake/Putney Slough area with my father, grandpa and bothers. In my opinion it has been ruined by paid hunting and leasing of land. Over the last few years it has gotten bad enough that I don't even hunt in that area. To move Brown Co. from the unit it is in now is a terrible move. Creating any licenses that are for private land only is clear step in the wrong direction and a 100% gain for guides and outfitters. These licenses will likely not ever sell out making it basically an over the counter licenses for NRs to hunt with guides on private land. Brown Co. is already being ruined by paid hunting! Keep money out of waterfowl hunting, it only takes away from the locals and the other great residents of South Dakota. My family, friends and myself are 100% against moving Brown Co. from its current unit in any shape or form.”

Bill Koupal, Pierre, SD, emailed” This email is to inform the commission that I oppose their May proposal to add 250 more nonresident waterfowl licenses to the state.”

George Vandel, Pierre, SD, emailed” Despite the modification in your April Proposal to reduce the number of 3-day nonresident licenses by 250 the overall impact of the May proposal will make the licenses more attractive to nonresidents, more will be sold which will result in a net loss of waterfowl hunting access for our 30,000 resident hunters. The bottom line is this is a big loss for resident duck hunters and a big gain for those in the commercial hunting business. Your actions will not improve hunting for resident hunters and in fact will contribute to even more resident hunters hanging up their guns. Such a result is not positive for South Dakota, our economy, support for our conservation efforts or our quality of life. I urge you to kill this proposal, and reduce the number of nonresident 3-day licenses to keep it as was intended when the “great compromise” created the licenses. Keep them on private land in the counties along the Missouri River where a public access program was developed. Actions by the Legislature, the Governor and now the Commission involving these 3-day temporary nonresident waterfowl licenses will make establishing future “compromises” involving nonresident license increases virtually impossible. Resident hunters are loosing their trust in our state government involving this issue. Your vote to increase the number of nonresident waterfowl hunters in South Dakota is not the compromise you envision and it will not put an end to this issue.”

waterfowl that migrate through the state each autumn. Most states do not not have a separate license requirement for waterfowl; a small game license, state stamp or habitat stamp and federal stamp suffice. The \$126 I pay each year is already a premium to hunt in SD. Is the reduced number of non-resident licenses based on science/harvest data or to give residents a huge opportunity advantage? Secondly, limiting hunting in Brown County to "private land" for non-residents seems very odd. Why would SD restrict me from hunting on Sand Lake NWR on nearby WPA's? My duck stamp dollars bought/lease these acres and fund the maintenance efforts. Is this change based on wildlife management principles? I would like an explanation on this provision. I have spent lots of money in SD over the last ten years. I would like to continue to enjoy the adventures SD offers. However, if your restrictions continue to increase, I will be forced elsewhere."

Jeff Clow, Harrisburg, SD, emailed" Please do not add any more non-resident waterfowl licences to eastern South Dakota."

Duke Remitz, Frederick SD, emailed" I am writing to express my concern and opposition to allotment of more NRW's in the NE part of the state. I stand with SD Waterfowlers Assoc.in opposing the increase. On a biological perspective, Ducks are very sensitive to hunting pressure. They'll move if harrassed too much. Geese are more tolerable of the pressure. In the last two years the migrating birds have been pushed out areas I've been hunting for years. The only thing that has changed has been a guiding service in the area. Not only have I witnessed it here in SD but in Canada as well. I understand if the lack of funding for GFP is in part due to the lack of pheasant hunting licenses sold. I'm sure you are being asked to do more with less. If true, I understand that. Please do not try to "make up" that gap by selling more NRW licenses. This would hurt our state and our residences. If you want to bridge the budgetary gap increase the price of Waterfowl licenses. Otherwise the few who benefit are the guides and most of that money stays with them and doesn't go into the community. On average,,for every new dollar that comes into a community it changes hands 7(seven) times supporting other business and people. Lastly, on a personal note. The sportspeople of this state are already getting squeezed out of fishing opportunities with recent SD Supreme Court rulings. Now SD outdoorsmen will be squeezed out more. These are two basic reason I have friends that are contemplating quitting hunting and fishing. These people have children that might not fall in love with the outdoor life. Think about it....less future license sales ! Please do the right thing for the wildlife in this state. Everything shouldn't have to be about the almighty dollar. Principles !!! Thank you."

Rick Downes, Frederick SD, emailed" I'm writing to comment on adding more non residents duck license. I beg you to not do this. Do not cave into the outfitters so that they can get more money for themselves and enable them to keep leasing up more land crowding out the locals. I'm already a victim to big money leasing up land I used to be able to hunt. The days of driving up to a farm and getting permission to hunt are few and far between now with land being leased out. If you add more out of staters you are crowding out the residents that live here paying taxes year round. Past legislators had the foresight to limit license to out of staters to keep our resources so as not to deplete it like other states have ( why do you think there coming here ). Let's not become a commercial state. We have pretty much done that already for pheasants. Let's not make hunting a rich man sport. Are you here for special interest groups or for the all people in this state. Thank you in advance a citizen and registered voter."

waterfowl hunters alike. The proposed changes provide a select few outfitters and/or lodges with special wildlife resources for their personal gain. This is not an economic development proposition, and it will not sit very well with either the resident hunters of South Dakota nor the non-resident hunters to South Dakota that have happily supported the economy and played by a fair set of rules. Other states have done this, and those states have succeeded in destroying their wildlife natural resources as one "favor" leads to another "favor", and then the state has suffered irreparable harm. I am very strongly opposed to making any changes to the current non-resident waterfowl licensing regulations, first and foremost on behalf of the resident SD residents that enjoy your amazing resources. Please use every opportunity to oppose the commercialization of the wildlife natural resources that your state is so blessed to have, because those resources are fragile, and the commercial exploitation of any wildlife natural resource never ends well. Thank you very much"

Andy Vandel, Pierre SD, emailed" I am against any type of increase in non-resident waterfowl licences in South Dakota. By utilizing unsold waterfowl licenses this will increase the overall number of non-resident hunters. If this is down, resident hunters will be lost in the long run. My recommendation instead would be to limit the number of non-resident waterfowl licences to 8% of the prior years resident numbers like west river deer is done today."

Curt Tesch, Rosholt, SD, emailed" I'm hoping all or at least some of you will recall my verbal comments at the Watertown commission meeting. I just want to emphasize what I stated at that time. If you don't recall, I live in Roberts county in the very northeast corner of South Dakota. My primary reason for moving here some 28 years ago was to enjoy the resident waterfowl hunting privileges Since that time I have seen a steady erosion in the quality of waterfowl hunting mainly due to the steady increases of nonresident hunting licenses. By the GF&P own power point program it showed the increase of the 10 day licenses from I believe it started at 1350 and is now 4000. That's a 300% increase in not that long of a time period. Then there's the 3 day licenses. I have to mention again that these licenses were created for a special "deal" along the Missouri River. They were never intended to be spread out over the state. They should be removed from the northeast. Now I'm pretty sure that ship has sailed and it's not going to happen, but I need to remind everyone of it again anyway. If you can't remove them from the northeast at least exempt Roberts County. As I mentioned before most of those licenses are used by "day hunters" from the Wheaton area. There is virtually no additional revenue from these license other than the cost of the license. These additional licenses have already drastically reduced the quality of our waterfowl hunting in the northeast. Please consider the proposals of the South Dakota Waterfowl Association or at least the spirit of what is being proposed. We are not a bunch of crazy crackpots. We are a group of dedicated waterfowl hunters trying to preserve a heritage that we take very dear to our hearts. Waterfowl hunting takes a lot of dedication and is generally a fairly solitary endeavor. It cannot be compared to pheasant hunting. It is very sensitive to hunting pressure. PLEASE some things just shouldn't be for sale for the sake of the almighty dollar."

Maynard Isaacson, Sioux Falls, SD emailed" I would like to go on record as OPPOSING the 250 3-day license increase in eastern South Dakota AND also OPPOSING the 500 3-day license increase in Brown County. Please take this into consideration at your commission meeting on June 8th and 9th."

Don Soderlund, Bath, SD, emailed” It's clear, the vast majority of resident and non-resident waterfowl hunters in SD do NOT want an increase in waterfowl licenses. This current proposal is a slap in the face to the majority. Some say it's actually a decrease, but the fact of the matter is that it will add hunters in the field statewide, but especially locally in my home County of Brown. We've already seen an unprecedented increase in pressure and competition for fields in Brown County due to the commercialization of waterfowl hunting. It's clear this proposal is only meant to appease one outfitter at the expense of many who live and hunt here. Any vote to increase waterfowl licenses in this area or any other area in the state is an absolute show of disrespect to the majority voice. We are very tired of the repeated attempts to increase non-resident waterfowl licenses, but because this is a passion and a reason why many of us continue to live in this great state, we will not give up fighting to keep South Dakota one of the highest quality waterfowl hunting areas in North America. Do NOT change the current licensing system. Do NOT allow politics or big money dictate our quality waterfowl hunting. Vote against the current non-res waterfowl license proposal.”

Justin Allen, Pierre, SD, emailed” I'm contacting you in regards to the Non-resident waterfowl proposal to be finalized in during the June commission meeting. The proposal would make several changes to the current 3-day license structure. As an avid SD waterfowl hunter that hunts across the state every year I'm against any change to the current structure that has worked extremely well for 95% of the waterfowl hunters of South Dakota, residents and non-residents alike, for well over a decade. As you all know the vast majority of residents are against additional NR hunters in already crowded areas of the state and more importantly against the commercialization of waterfowl hunting in SD. This proposal is the commercialization of at least 750 private only 3-day licenses in all counties excluding the original “Pierre Area” Missouri River Counties and NE SD. For this reason I'm against the change in the current licenses structure especially moving Brown Co. form the current NE SD 3-day license unit (NRW-00Y) My number one issue by far with the whole proposal is moving Brown Co. from current NRW-00Y (NESD) and moving it into NRW-00X (NCSD). I can't even begin to understand this proposed move and I'm against moving Brown Co. out of NRW-00Y. Of the current 500 3-day licenses that are available in 00Y likely 150 plus of those licenses are used in Brown each year. By taking Brown Co. out of 00Y those licenses that were previously used in Brown Co. will now be used in Day/Marshall/Clark. So you would make the counties that have the highest pressure in state have even more. However, since Brown Co is the second most used county by NRs you still have a large population of NRs hunting in Brown Co. under the current 10 day statewide licenses, many of which are likely used on public land in Brown Co. So the notion that moving Brown Co. out the current 3 day licenses area and into the private land only area will decrease NR hunting on public land is awful wishful thinking. By moving Brown not only will public land be just as crowded but you create additional competition for private land that isn't already leased. It is a fact when you increase the demand for private land pay hunting increases and folks and guides start leasing land so they have a guaranteed place to hunt. The rest that don't want to pay hunt are forced to either settle for crowded public land or quit hunting. This is already an issue and likely why many continue to quit waterfowl hunting. I have a tough time believing anything else but that the proposal to take Brown Co. out of current 00Y and moving into proposed 00X for private land only is anything but to please commercial hunting interest. I think you're going to find that anyone that supports the move for Brown Co. has commercial interests. This proposal to move Brown Co. is a bad deal for the common resident and NR waterfowl hunter. Please leave Brown Co in the NE SD 3-day unit. An additional reason why this proposal as a whole is a bad deal is the continued loss of access to quantity waterfowl



move here, based very much on the excellent waterfowl hunting in this state I would be very disappointed to see things change for the worse simply so that a very limited number of people can capitalize on it monetarily. I have listened to testimonies from many different parties and I cannot fathom the level of selfishness expressed by these groups wanting to change these laws to specifically benefit themselves. These businesses were started under the current laws and somehow expect that every other resident of the state should have to suffer so that some unwise investment decisions can be justified. I have several other friends that are also waterfowl guides in this state and they are specifically opposed to the increase of licenses, despite the fact that it may bring them some additional money, but they realize that it will damage the overall level of satisfaction of their clients and of current residents. This state has something special in its waterfowling. A lot of that is due to the current regulations. When I was not a resident of this state I was still in favor of the lottery system and the fact that the licenses weren't extremely easy to get as I was guaranteed a great trip on the years that I did draw. For those that want to hunt in "the Dakotas" every single year, North Dakota is open to everyone and a very small amount of research of any North Dakota resident hunter will prove that that is not the optimal way to run a non-resident licensing system. While we are not to that level yet, our state is different geographically in terms of waterfowl use. While only a small sliver of our state is really productive for waterfowl hunting, almost all of our neighboring state to the North is productive with much more water. When examining this bill, please keep in mind the thousands of current residents that enjoy our current situation...many of whom have made specific choices to either move here or stay here for those benefits."

John Moisan, Ft. Pierre, SD, emailed" Ladies and Gentlemen: My name is John Moisan and I grew up in Watertown in the 1950's and 1960's. I learned how to hunt ducks (mostly canvasbacks) and geese with my grandpa, Bud Hoy, on Stover's Pass west of Florence, SD. In those days, few people were tough enough and diligent enough to stick out the bad weather waiting for canvasbacks in a blizzard. We were, independent, hard core, did our scouting homework and staked out a hole on a windy hilltop just to get a shot. We were willing to work for our ducks. In my hunting/fishing lifetime (60 years), I have seen the South Dakota commercialization (guided hunts) of pheasants, prairie chickens/grouse, Canadian geese, snow geese, walleyes and all types of fish, white tail deer, mule deer, wild turkey, prairie dogs, "wild" buffalo, "wild" and truly wild elk, antelope, and almost every single species of wildlife South Dakota has to offer. As each species is commercialized, the places for the "average guy" resident hunter decrease dramatically. We have been, for a long time, over the breaking point in South Dakota, where there will be no where for us to take our grandchildren for a quality, no cost, outdoor experience. For the record, I AM a landowner in Tripp County as well as a resident of Fort Pierre. I have bills to pay just like every other landowner and could easily and quickly charge people to hunt or establish a hunting preserve. BUT I won't do it. Most of my farm neighbors charge \$150-\$300 per person/per day to hunt pheasants/grouse. One neighbor, charges \$30,000 per group for a 3 day weekend hunt. Most of what they do is about greed and killing. It's not about hunting - it's paying to kill tame pheasants. The quality outdoor experience with our grandchildren is dead in Tripp County (and most other counties). Your vote to add non-resident waterfowl licenses to satiate the greed of a few "professional" guides will put the final nail in the coffin for quality waterfowl hunting with our grandchildren in South Dakota."

Chad Carlson, Aberdeen, SD, emailed" I am writing to oppose the proposed increased of nonresident waterfowl licenses in South Dakota. The current allocation of

hunter. I do not believe that Gregory County has sufficient infrastructure (motels, restaurants, processing) to support a single season format. These facilities are maxed out even with the two season format and would not be able to support the increased number of hunters with the proposed format. The public lands available for deer hunting are very crowded and would be even more so under the proposed season. Private lands are tied up by commercial interests who charge \$700 to \$1,500 on up for a buck and \$400 on up for a doe. The two season format makes the best use of available lands for South Dakota hunters who do not or can not support commercial hunting operations. Thank you for your consideration.”

Cartor Carlson, Aberdeen, SD, emailed” As a South Dakota resident concerned about the number of number of nonresident licenses I am opposed to the proposed increase.”

Scott Hed, Sioux Falls, SD, emailed” Good day, and thank you for the opportunity to submit my thoughts on a proposal you will be considering this week in Chamberlain. I firmly oppose the idea of adding additional non-resident waterfowl licenses. South Dakota has tremendous waterfowl hunting opportunities, and it is in part due to the fact that it's not a "free for all" as far as hunting areas being crowded. Actually, some places are already experiencing crowded conditions, making it already difficult to find spots to hunt. Adding additional non-resident licenses will only exacerbate this problem. Many non-residents that hunt waterfowl in South Dakota enjoy the hunt quality and believe that the current quota system and needing to apply and be drawn to hunt contribute to the quality of the experience here. The odds of being drawn are not outlandish, and most hunters get to hunt every other year or two out of every three years even. Resident hunters will be the most impacted, as an increase in non-resident licenses will only serve the interests of commercial operators who seek to profit from the public's resource. More hunting lands and waters will be leased up and made off limits to the average South Dakota resident. The days of a parent taking their son or daughter on their first hunt will become even less possible, as more land is tied up by guides and outfitters who charge top dollar to hunt. Please vote against the proposal to increase non-resident waterfowl licenses. Thank you for considering my feelings on this matter, and thank you also for your service to South Dakota sportsmen and women.”

Nancy Hilding Black Hawk, SD emailed”I am opposed to more non-resident waterfowl licenses. The current proposal will add 250 3-day licenses to eastern South Dakota. That means there will be 250 more hunters crowding the already heavily hunted areas such as Brookings, Kingsbury, Hamlin, Codington and Clark counties. The proposal would also add 500 3-day licenses to Brown County. These licenses in Brown county will be moved from the Missouri River corridor to increase the commercialization of waterfowl hunting for the benefit of one outfitter who leases land near Sand Lake Refuge. With an additional 500 licenses, massive new areas will likely be leased. I would like some waterfowl left for birders to watch...especially near a wildlife refuge. I don't want commercialization and overhunting of waterfowl.”

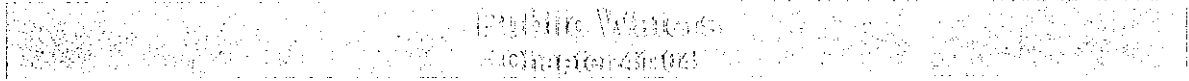
Dave Ode, Pierre, SD, emailed” Regarding the finalization of your 2017 non-resident waterfowl license proposal – Bad Idea, don't do it. Except for my time in the military, I've hunted ducks in South Dakota, as a resident, for almost 50 years. Even in a rural state like South Dakota, duck hunting is not that easy, and it hasn't gotten any easier. Adding more non-residents isn't going to help anything but make it more crowded. When I first started hunting waterfowl in 1968, goose hunting was hard; duck hunting was easy, i.e. access was easy, ducks were abundant, and limits were

hope that the letters written against the proposal that arrived in droves will have some influence on the decision. As it appears to me, the average resident hunter and many non-resident hunters are entirely on the same page, vote no. Leaving the nonresident licenses unchecked will inevitably lead to the commercialization of goose and duck hunting in the fall. It's not a matter of if it will happen but when. It has for spring snow geese on a huge scale. Non-resident licenses are essentially unchecked in the spring and it has led to the proliferation of snow goose guides and commercialization of snow goose hunting in the spring time. Some of the guides lease fields in the spring for snow geese even. Here is a list of guides that do business in South Dakota in the spring, this probably is not a complete list: - Top Gun Guide Service - Waterfowl Junkie Outdoors - Goose Grinders - Hideaway Hollow Outfitters - Northern Plains Outfitters - Northern Skies Outfitters - Dirtybird Outfitters - Goose Hog Outdoors - Banded Gandr Outfitters - The Goose Guys - Migrator Valley Outfitters - Maxxed Out Guides - Eagle Head Outdoors - Goose and Duck Smackers - Neu outdoors - Outdoor Adrenaline - Migration X Outfitters - Pepper Slough Outfitters - First Light Finishers - Prairie Storm Outfitters - Whiteout Outfitters - Last Pass Guide Service - Big Guns - Up North Outdoors - Flatland Flyways - Midwest Migrators - Snow Goose Commander - AWA Waterfowling Adventures - Black goose Outfitters - Midwest Waterfowl Outfitters - Snow Goose Specialists - Goose Grinders - Drift Prairie Outfitters - Goose Xperts - Waterfowl Connection - Big River Outfitters - GB Guide Service - Flight Stoppers Guide Service - Mid Migration Outfitters - Snow Goose Addiction Outfitters - Death Row Snows - Epic Guide Service - Waterfowl Assassins Guide Service - Fowl Exposure - South Dakota Outdoor Adventures - Elite Outdoorsman - All Or Nothing Outdoors - Red Stag - Potters's Fields - Migratory Madness - Ducks r Down - Goose Busters Guide Service. This commercialization will happen in the fall as well. It might take a couple years like it did for snow goose hunting but before long you'd have a list of guides 50+ names long that would be in this state leasing land and ultimately eliminating any hope a freelance hunter has to hunt. Nonresidents and residents alike who cannot afford or will not pay a guide would be SOL. The path this nonresident waterfowl issue has been on the last few years, this commercialization is the way we are headed. Brown county will be well on its way with this proposal. If you don't believe me that these all guide in South Dakota for snow geese then look them up on Google. They will be here in the fall if these licenses are left unchecked just like in the spring. You also have probably read by now the latest proposal for the nonmeandered water issue. All nonmeandered water would be closed to hunting if that proposal passes. Hunters would be losing hundreds of thousands of acres of water for hunting. You add more people to dramatically less access and you are in reality increasing the pressure many times over with increases in licenses. To be honest, if the nonmeandered bill passes, licenses will need to be drastically reduced just based on accessibility. Pressure will continue to get condensed into smaller and smaller pockets. Throw in leasing land, which the guides do, the problem is further exacerbated. I know you want testimony based on numbers. I sent many sets of numbers in the previous letters based on GFP numbers. But here is some pure emotional testimony; I've talked to several people who hunt the brown county area and we are under similar sentiments. If this passes, hunting in Brown county will never be the same and quite honestly will not be worth a resident, such as myself, hunting in as much. Our business will go to other counties and quite frankly with all the fighting that is going on with this issue, my business may wind up being a one week hunting adventure in Canada each year and hunting the road ditches by Pierre in the winter and not wasting my time fighting the guides and the pressure that will move into South Dakota. Everyone is sick of dealing with the commercialization attempts at waterfowl every single year. It gets old and a lot of people are sick of it. Again, I want to make sure you are well aware that I do not think non-residents should be banned from hunting





# GAME, FISH AND PARKS COMMISSION ACTION PROPOSAL



<b>Commission Meeting Dates:</b>	<b>Proposal</b>	<b>June 13-14, 2017</b>	<b>Pierre</b>
	<b>Public Hearing</b>	<b>September 7, 2017</b>	<b>Sioux Falls</b>
	<b>Finalization</b>	<b>September 7-8, 2017</b>	<b>Sioux Falls</b>



**NEW RULE.** Petition to restrict recreational use of a nonmeandered lake. A petition to the Commission requesting the authority to restrict recreational use of the waters of a nonmeandered lake that are open to recreational use under SDCL 41-23-8 shall be submitted on forms prescribed by the Department. The Commission shall fix a date for hearing on each petition submitted and shall give notice of the hearing on an agenda published in accordance with SDCL 1-25-1.3. The Department shall notify the petitioner of the date, time and place of the meeting at which the petitioner's request will be considered, and the petitioner shall be given an opportunity to be heard at the meeting. Within forty days after a hearing, the Commission shall adopt a resolution in accordance with SDCL 41-23-9 that either grants the petition in part or full or denies the petition stating its reasons for partial or complete denial.

A petition shall contain the following:

1. Name and address of the petitioner;
2. Type of recreational access restriction requested;
3. Reasons for the requested restriction;
4. Periods of the year for the requested restriction;
5. Duration of the requested restriction;
6. Legal description and a map of the location of the water; and
7. Proof of ownership and/or legal possession of the property underlying water being petitioned for restricted recreational use.



SDCL 41-23-9 (Section 9 of HB 1001 from the 2017 Special Session)

The commission shall promulgate rules, pursuant to chapter 1-26, to establish a process whereby an owner of private property underlying any nonmeandered lake listed in section 8 of this Act may petition the commission to allow the owner of private property to restrict recreational use of the water overlying the owner's private property. The commission shall determine whether to grant, deny, or modify the petition. The commission shall consider privacy, safety, and substantially affected financial interests of the owner of the private property underlying the water, as well as history of use, water quality, water quantity, and the public's interest in recreational use of the water.

<b>APPROVE</b> _____	<b>MODIFY</b> _____	<b>REJECT</b> _____	<b>NO ACTION</b> _____
----------------------	---------------------	---------------------	------------------------

**GAME, FISH AND PARKS COMMISSION ACTION  
FINALIZATION**

**Antelope Hunting Season  
Chapter 41:06:23**

Commission Meeting Dates:	Proposal	June 8-9, 2017	Oacoma
	Public Hearing	July 13, 2017	Pierre
	Finalization	July 13-14, 2017	Pierre

**COMMISSION PROPOSAL**

**Duration of Proposal:** 2017 and 2018 hunting seasons

**Season Dates:** September 30 – October 15, 2017  
September 29 – October 14, 2018

**Open Area:** See the attached map

**Licenses:** Total of 3,347 licenses (West River: 3,244 licenses; East River: 103 licenses)  
Residents: 3,265 single tag licenses  
Nonresidents: 82 single tag licenses

**Requirements and Restrictions:**

- One-half of the licenses allocated in each unit are available for landowner/operator preference.
- Landowners not possessing a license that allows the harvest of a buck may purchase an "any antelope" or a two-tag "any antelope" + "doe/fawn antelope" license that is valid on their property only.

**Proposed changes from last year:**

- Adjust the number of West River and East River resident licenses from no more than 2,885 and 60 one-tag any antelope licenses, respectively; to no more than 3,165 and 100 one-tag any antelope licenses, respectively.

**DEPARTMENT RECOMMENDATION**

**Recommended changes from proposal:**

- Adjust the number of West River resident licenses from no more than 3,165 one-tag any antelope licenses, to no more than 4,665 one-tag antelope licenses, and 300 two-tag antelope licenses. No change from proposal for the East River resident license allocation (100 one-tag antelope licenses).

Resident Tags

Year	Buck Tags	Doe Tags	Total Tags
2016	2,945	0	2,945
2017-2018	3,865	1,400	5,265

Buck Tags (+31%)

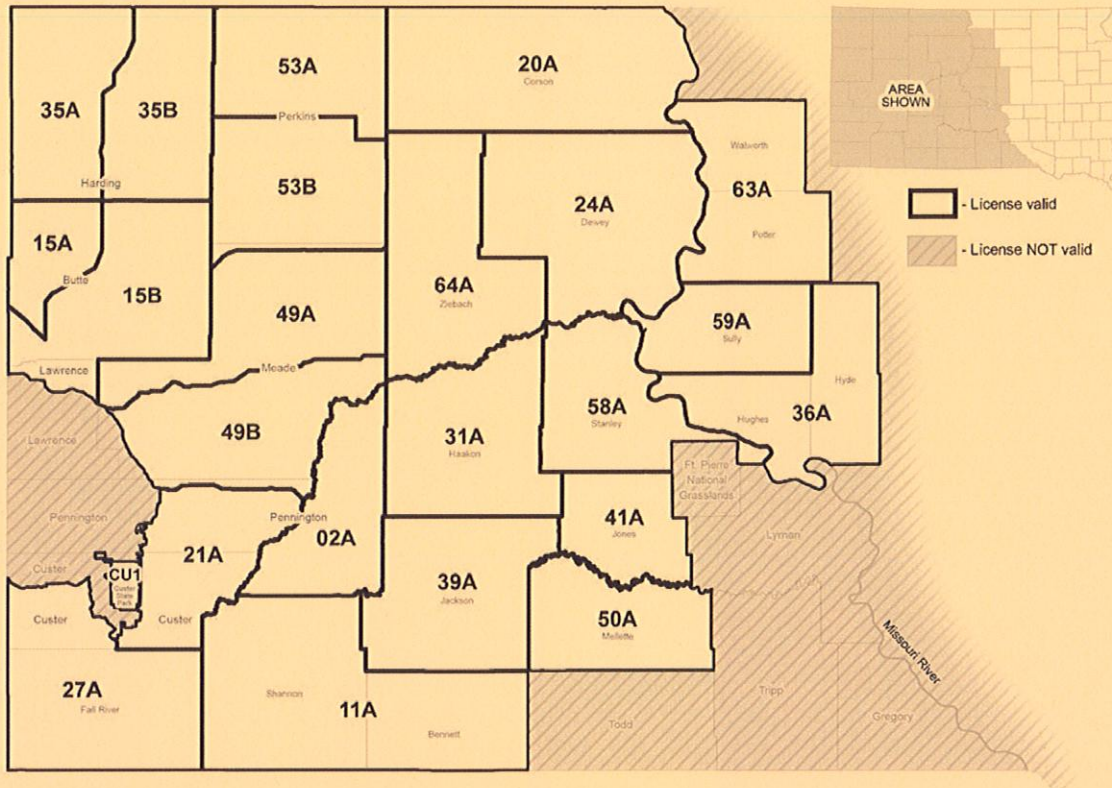
**SUPPORTIVE INFORMATION**

Year	Licenses Sold	Tags Issued	Bucks Harvested	Doe/Fawn Harvested	Total Harvested	Success
2012	3,965	4,936	1,695	942	2,637	53%
2013	3,467	4,006	1,454	480	1,935	48%
2014	3,052	3,052	1,770	314	2,083	66%
2015	3,322	3,322	1,910	314	2,224	64%
2016	3,328	3,328	2,112	350	2,461	70%

**APPROVE** \_\_\_\_\_ **MODIFY** \_\_\_\_\_ **REJECT** \_\_\_\_\_ **NO ACTION** \_\_\_\_\_



# ANTELOPE UNITS



License and Tag Numbers by Unit

Unit	Resident		Nonresident		Unit	Resident		Nonresident	
	Licenses	Tags	Licenses	Tags		Licenses	Tags	Licenses	Tags
02A	150	150	3	3	41A	30	30	1	1
11A	50	50	1	1	45A	CLOSED			
15A	300	600	12	24	45B	CLOSED			
15B	600	600	12	12	49A	800	800	16	16
20A	50	50	1	1	49B	500	500	20	20
21A	125	125	3	3	50A	30	30	1	1
24A	40	40	1	1	53A	150	150	3	3
27A	550	550	11	11	53B	550	550	11	11
31A	100	100	2	2	58A	40	40	1	1
35A	300	300	6	6	59A	30	30	1	1
35B	300	300	6	6	60A	CLOSED			
36A	50	50	1	1	63A	20	20	1	1
39A	50	50	1	1	64A	150	150	3	3



**GAME, FISH AND PARKS COMMISSION ACTION  
FINALIZATION**

**Custer State Park Antelope Hunting Season  
Chapter 41:06:25**

Commission Meeting Dates:	Proposal	June 8-9, 2017	Oacoma
	Public Hearing	July 13, 2017	Pierre
	Finalization	July 13-14, 2017	Pierre

**COMMISSION PROPOSAL**

Duration of Proposal: 2017 and 2018 hunting seasons

Season Dates: Season closed

Licenses: Season closed

Proposed changes from last year:

1. Adjust the number of resident licenses from no more than 3 one-tag any antelope licenses to zero one-tag antelope licenses; close the season.

**DEPARTMENT RECOMMENDATION**

Recommended changes from proposal: None.

**SUPPORTIVE INFORMATION**

Year	Licensed Hunters	Applicants	Success Rate	Pronghorn Harvested	Recreation Days
2016	3	1,243	100%	3 bucks	4
2015	3	1,223	100%	3 bucks	6
2014	3	1,086	100%	3 bucks	6
2013	3	995	100%	3 bucks	3
2012	3	916	100%	3 bucks	4
2011	3	900	100%	3 bucks	4
2010	13	970	100%	3 bucks, 7 does, 1 fawn	17
2009	13	967	92%	3 bucks, 8 does	19
2008	No Season				

**APPROVE** \_\_\_\_\_ **MODIFY** \_\_\_\_\_ **REJECT** \_\_\_\_\_ **NO ACTION** \_\_\_\_\_

GAME, FISH AND PARKS COMMISSION ADMINISTRATIVE ACTION

**Antelope Hunting Seasons – Hunting Unit License & Access Permit Allocations**

Commission Meeting Dates:	Proposal	June 8-9, 2017	Custer State Park
	Public Hearing	July 13, 2017	Pierre
	Finalization	July 13-14, 2017	Pierre

**LICENSE & ACCESS PERMIT ALLOCATION BY SEASONS AND UNITS**

See Attached Spreadsheets



Unit	Unit Name	% NR	Resident Licenses			Nonresident Licenses			License and Tag Totals									
			AnyA 41	D/K 43	AA+D/K 48	AnyA 41	D/K 43	AA+D/K 48	RES 1-tag	RES 2-tag	RES Licenses	RES Tags	NR 1-tag	NR 2-tag	NR Licenses	NR Tags		
02A	Pennington East	2%	150	0	0	3	0	0	150	0	150	150	3	0	3	3		
11A	Bennett/Oglala Lakota	2%	50	0	0	1	0	0	50	0	50	50	1	0	1	1		
15A	Butte NW	4%	0	0	300	0	0	12	0	300	600	600	0	12	12	24		
15B	Butte/Lawrence	2%	300	300	0	6	6	0	600	0	600	600	12	0	12	12		
20A	Corson	2%	50	0	0	1	0	0	50	0	50	50	1	0	1	1		
21A	Custer/Pennington Central	2%	125	0	0	3	0	0	125	0	125	125	3	0	3	3		
24A	Dewey	2%	40	0	0	1	0	0	40	0	40	40	1	0	1	1		
27A	Fall River/Custer Southwest	2%	550	0	0	11	0	0	550	0	550	550	11	0	11	11		
31A	Haakon	2%	100	0	0	2	0	0	100	0	100	100	2	0	2	2		
35A	Harding West	2%	300	0	0	6	0	0	300	0	300	300	6	0	6	6		
35B	Harding East	2%	300	0	0	6	0	0	300	0	300	300	6	0	6	6		
36A	Hughes/Hyde	2%	50	0	0	1	0	0	50	0	50	50	1	0	1	1		
39A	Jackson	2%	50	0	0	1	0	0	50	0	50	50	1	0	1	1		
41A	Jones	2%	30	0	0	1	0	0	30	0	30	30	1	0	1	1		
45A	Lyman								CLOSED									
45B	Ft. Pierre National Grasslands								CLOSED									
49A	Meade North	2%	500	300	0	10	6	0	800	0	800	800	16	0	16	16		
49B	Meade South	4%	300	200	0	12	8	0	500	0	500	500	20	0	20	20		
50A	Mellette	2%	30	0	0	1	0	0	30	0	30	30	1	0	1	1		
53A	Perkins North	2%	150	0	0	3	0	0	150	0	150	150	3	0	3	3		
53B	Perkins South	2%	250	300	0	5	6	0	550	0	550	550	11	0	11	11		
58A	Stanley	2%	40	0	0	1	0	0	40	0	40	40	1	0	1	1		
59A	Sully	2%	30	0	0	1	0	0	30	0	30	30	1	0	1	1		
60A	Tripp								CLOSED									
63A	Waiworth/Potter	2%	20	0	0	1	0	0	20	0	20	20	1	0	1	1		
64A	Ziebach	2%	150	0	0	3	0	0	150	0	150	150	3	0	3	3		
	<b>TOTAL</b>		<b>3,565</b>	<b>1,100</b>	<b>300</b>	<b>80</b>	<b>26</b>	<b>12</b>	<b>4,665</b>	<b>300</b>	<b>4,965</b>	<b>5,265</b>	<b>106</b>	<b>12</b>	<b>118</b>	<b>130</b>		
Unit	Unit Name	% NR	AnyA 41	D/K 43	AA+D/K 48	AnyA 41	D/K 43	AA+D/K 48	RES 1-tag	RES 2-tag	RES Licenses	RES Tags	NR 1-tag	NR 2-tag	NR Lic	NR Tags		



ANTELOPE  
2016 vs. 2017-2018 Comparison

Unit #	Unit Name	2016 Resident Licenses	2017-2018 Resident Licenses	# Change	% Change	2016 Resident Tags	2017-2018 Resident Tags	# Change	% Change
02A	Pennington East	150	150	0	0%	150	150	0	0%
11A	Bennett/Shannon	50	50	0	0%	50	50	0	0%
15A	Butte NW	200	300	100	50%	200	600	400	200%
15B	Butte/Lawrence	250	600	350	140%	250	600	350	140%
20A	Corson	40	50	10	25%	40	50	10	25%
21A	Custer/Pennington Central	125	125	0	0%	125	125	0	0%
24A	Dewey	30	40	10	33%	30	40	10	33%
27A	Fall River/Custer Southwest	500	550	50	10%	500	550	50	10%
31A	Haakon	100	100	0	0%	100	100	0	0%
35A	Harding West	200	300	100	50%	200	300	100	50%
35B	Harding East	150	300	150	100%	150	300	150	100%
36A	Hughes/Hyde	40	50	10	25%	40	50	10	25%
39A	Jackson	50	50	0	0%	50	50	0	0%
41A	Jones	20	30	10	50%	20	30	10	50%
45A	Lyman	0	0	0	0%	0	0	0	0%
45B	Ft. Pierre National Grasslands	0	0	0	0%	0	0	0	0%
49A	Meade North	400	800	400	100%	400	800	400	100%
49B	Meade South	200	500	300	150%	200	500	300	150%
50A	Mellette	20	30	10	50%	20	30	10	50%
53A	Perkins North	100	150	50	50%	100	150	50	50%
53B	Perkins South	150	550	400	267%	150	550	400	267%
58A	Stanley	50	40	-10	-20%	50	40	-10	-20%
59A	Sully	20	30	10	50%	20	30	10	50%
60A	Tripp	0	0	0	0%	0	0	0	0%
63A	Walworth/Potter	0	20	20	NA	0	20	20	NA
64A	Ziebach	100	150	50	50%	100	150	50	50%
<b>TOTAL</b>		<b>2,945</b>	<b>4,965</b>	<b>2,020</b>	<b>69%</b>	<b>2,945</b>	<b>5,265</b>	<b>2,320</b>	<b>79%</b>

Note: An additional percentage of the number of resident licenses will be available to nonresidents based upon the following harvest strategies by management unit: Restrictive (2%), Moderate (4%), Liberal (8%)



ARCHERY ANTELOPE ACCESS PERMITS

2017-2018

Designated Area	Number of Access Permits
	Any Antelope
Portions of Custer and Pennington counties within the Black Hills Fire Protection District	5

2016 vs. 2017-2018 Comparison

Designated Area	Number of Access Permits
	Any Antelope
<b>2016:</b> Portions of Custer and Pennington counties within the Black Hills Fire Protection District	5
<b>2017-2018:</b> Portions of Custer and Pennington counties within the Black Hills Fire Protection District	5



**GAME, FISH AND PARKS COMMISSION ACTION  
FINALIZATION**

**Sage Grouse Hunting Season  
Chapters 41:06:10**

Commission Meeting Dates:	Proposal	June 8-9, 2017	Oacoma
	Public Hearing	July 13, 2017	Pierre
	Finalization	July 13-14, 2017	Pierre

**COMMISSION PROPOSAL**

Duration of Proposal: 2017 hunting season

Season Dates: Closed

Proposed changes from last year:

1. Close the season.

**DEPARTMENT RECOMMENDATION**

Recommended changes from proposal: None.

**SUPPORTIVE INFORMATION**

A season closure is being recommended based on the season recommendation guidelines found within the "Sage-Grouse Management Plan for South Dakota, 2014-2018". Results from the 2017 spring lek surveys indicated 77 (102 in 2016) males counted on priority leks and 218 (278 in 2016) males counted on all leks.

<u>Population Inices</u>	<u>Hunting Season Recommendation</u>
< 150 males counted on priority leks AND < 250 males counted on all leks	No Hunting Season
≥ 150 males counted on priority leks OR ≥ 250 males counted on all leks	2-day season, public land only in Harding County and Butte County west of US HWY 85, limit 1 sage-grouse per hunter per season
Sage-grouse listed as threatened or endangered under the Endangered Species Act	No Hunting Season

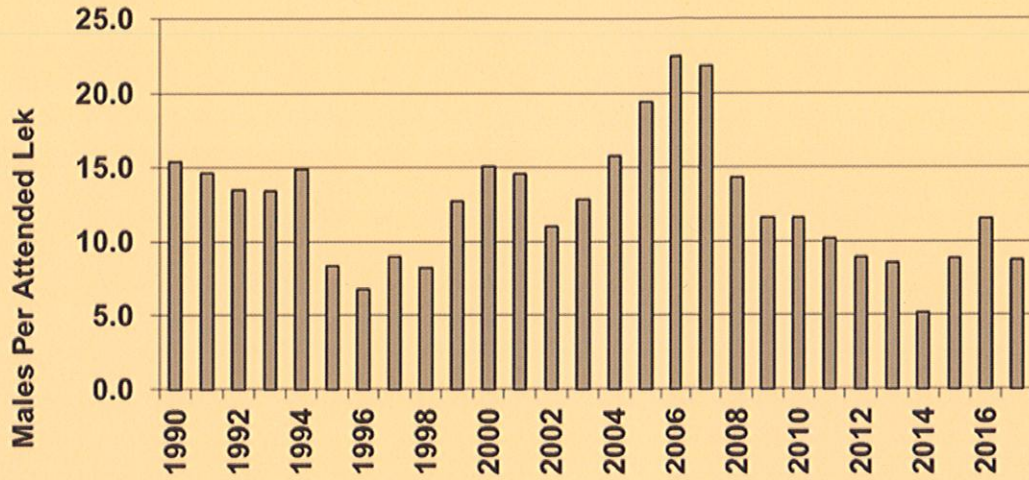
Year	Hunters	Sage Grouse Harvested
2004	53	25
2005	40	26
2006	46	15
2007	25	10
2008	24	17
2009	20	7
2010	26	12
2011	27	11
2012	35	9
2013	SEASON CLOSED	
2014	SEASON CLOSED	
2015	SEASON CLOSED	
2016*	30	10

**APPROVE** \_\_\_\_\_ **MODIFY** \_\_\_\_\_ **REJECT** \_\_\_\_\_ **NO ACTION** \_\_\_\_\_



\*Number of hunters and harvest based on hunter harvest survey results of those hunters who were successful in drawing a sage grouse hunting permit.

### Sage Grouse Lek Survey Results, 1990-2017.



APPROVE _____	MODIFY _____	REJECT _____	NO ACTION _____
---------------	--------------	--------------	-----------------



GAME, FISH AND PARKS COMMISSION ACTION  
FINALIZATION

**Custer State Park Coyote Hunting Season**  
Chapters 41:06:07 and 41:06:37

Commission Meeting Dates:	Proposal	June 8-9, 2017	Oacoma
	Public Hearing	July 13, 2017	Pierre
	Finalization	July 13-14, 2017	Pierre

**COMMISSION PROPOSAL**

Duration of Proposal: 2017 and 2018 hunting seasons

Season Dates: December 26, 2017 – March 31, 2018  
December 26, 2018 – March 31, 2019

Open Area: Fenced area of Custer State Park

Licenses: Any resident predator/varmint license, resident furbearer license, or any resident hunting license

Requirements and Restrictions:

1. Resident hunters must obtain a free access permit.
2. Shooting hours are ½ hour before sunrise to ½ hour after sunset.
3. No hunting within 200 yards of any public access road or building.

Proposed changes from last year:

1. Open season and allow residents to hunt coyotes with any valid hunting license. No Custer State Park coyote license will be issued.
2. All hunters must obtain a free access permit issued by the Department.
3. Change the season dates from the second Monday in December to December 31 to December 26 to March 31.
4. Amend the 200 yard hunting restriction near roads and buildings within Custer State Park to include coyotes.

**DEPARTMENT RECOMMENDATION**

Recommended changes from proposal: None.

**SUPPORTIVE INFORMATION**

APPROVE _____	MODIFY _____	REJECT _____	NO ACTION _____
---------------	--------------	--------------	-----------------

**RESOLUTION 17- 09**

WHEREAS, South Dakota Parks and Wildlife Foundation owns real estate (Property) described as:

Tract 1 of Spring Creek Country Club Addition in Government Lot 1 and the E½ of the Northwest Quarter (NW1/4) and the Southwest Quarter of the Northwest Quarter (SW1/4NW1/4) of Section Twenty-Six (26), Township One Hundred (100) North, Range Forty-Nine (49) West of the 5<sup>th</sup> P.M., Lincoln County, South Dakota according to the recorded plat thereof; and

WHEREAS, South Dakota Parks and Wildlife Foundation, Inc. desires to gift the Property to the South Dakota Department of Game, Fish and Parks (Department) as an addition to Good Earth State Park at Blood Run; and

WHEREAS, the Department has evaluated and determined that the Property would serve very well as an addition to Good Earth State Park at Blood Run; and

WHEREAS, the Department is authorized to accept gifts of property for park and recreational purposes per SDCL §§ 41-2-19 and 41-2-24;

NOW, THEREFORE, BE IT RESOLVED, that the South Dakota Game, Fish and Parks Commission does hereby authorize the Department to accept the gift of the Property from South Dakota Parks and Wildlife Foundation to be used as an addition to Good Earth State Park at Blood Run.

BE IT FURTHER RESOLVED that the South Dakota Game, Fish & Parks Commission, on behalf of the citizens of South Dakota, does hereby acknowledge and express its deepest appreciation and gratitude to South Dakota Parks and Wildlife Foundation for its generosity, and further acknowledge the benefits this gift will provide at Good Earth State Park at Blood Run.



GOOD EARTH  
STATE PARK

Tract 1  
(Common Area)

Spring Creek  
Country Club

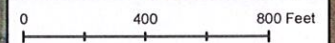
Big Sioux River

Subject Property  
(22.52 acres)

IOWA

**Map Feature Legend**

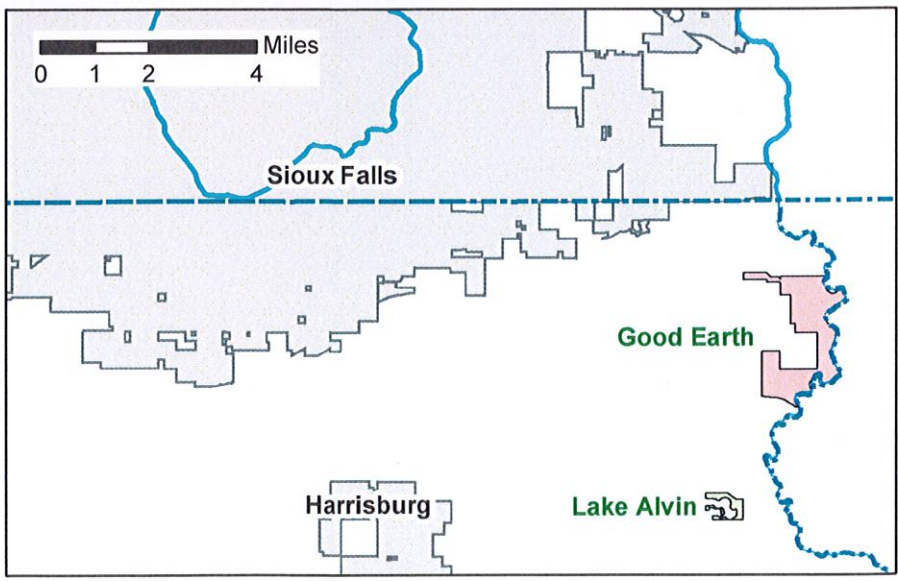
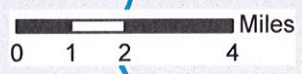
- Tract 1 (Common Area)
- Former Vanderpan Property
- 2016 Forest Legacy Acquisition
- Spring Creek Country Club
- Good Earth State Park



**SOUTH DAKOTA**



Good Earth State Park  
Lincoln County



Good Earth

Harrisburg

Lake Alvin



DIVISION OF PARKS AND RECREATION  
January to June 2017 Revenue Comparison by Item

	2016		2017		%
	Number	Dollar	Number	Dollar	
Annual	32,905	\$ 987,150	33,606	\$ 1,008,188	2%
Second Vehicle	8,232	\$ 123,476	8,797	\$ 131,951	7%
Combo	18,425	\$ 829,108	19,086	\$ 858,848	4%
Transferable	1,348	\$ 87,612	1,517	\$ 98,579	13%
Daily / Person	14,453	\$ 57,812	14,203	\$ 56,813	-2%
Daily / Vehicle	29,656	\$ 177,936	28,632	\$ 171,790	-3%
Unattended Vehicle Daily	692	\$ 6,916	877	\$ 8,766	27%
Motorcoach Permit	2,117	\$ 6,351	10,735	\$ 32,205	407%
GSM Annual Trail Pass	1,755	\$ 26,325	1,851	\$ 27,765	5%
GSM Daily Trail Pass	5,491	\$ 21,964	4,879	\$ 19,516	-11%
CSP Temp Daily / Vehicle	51,953	\$ 1,039,056	52,690	\$ 1,053,810	1%
Bike Band	4,658	\$ 46,578	4,858	\$ 48,585	4%
One-Day Special Event	N/A	\$ 3,975	N/A	\$ 2,800	-30%
<b>PERMITS</b>	<b>171,683</b>	<b>\$ 3,414,259</b>	<b>181,731</b>	<b>\$ 3,519,615</b>	<b>3%</b>
Camping Services Permits	-	\$ 6,071,362	-	\$ 6,360,797	5%
Gift Card	-	\$ 3,500	-	\$ 5,028	44%
Picnic Reservations	-	\$ 14,742	-	\$ 12,313	-16%
Firewood	12,964	\$ 64,821	13,436	\$ 67,181	4%
<b>LODGING</b>	<b>12,964</b>	<b>\$ 6,154,425</b>	<b>13436</b>	<b>\$ 6,445,320</b>	<b>5%</b>
<b>TOTAL</b>	<b>184,648</b>	<b>\$ 9,568,684</b>	<b>195,167</b>	<b>\$ 9,964,934</b>	<b>4%</b>

## January to June 2017 Revenue Comparison by District

LOCATION	2015	2016	%	LOCATION	2015	2016	%
Fort Sisseton				Lewis & Clark			
Pickereel Lake				Chief White Crane			
Roy Lake				Pierson Ranch			
Sica Hollow				Springfield			
<b>DISTRICT 1</b>	<b>\$ 358,588</b>	<b>\$ 348,037</b>	<b>-3%</b>	Sand Creek			
Richmond Lake				Tabor			
Mina Lake				<b>DISTRICT 9</b>	<b>\$ 1,360,322</b>	<b>\$ 1,402,030</b>	<b>3%</b>
Fisher Grove				North Point			
Amsden				North Wheeler			
Lake Louise				Pease Creek			
<b>DISTRICT 2</b>	<b>\$ 176,272</b>	<b>\$ 191,718</b>	<b>9%</b>	Randall Creek			
Hartford Beach				South Shore			
Lake Cochrane				South Scalp			
Pelican Lake				Whetstone			
Sandy Shore				White Swan			
<b>DISTRICT 3</b>	<b>\$ 292,690</b>	<b>\$ 302,573</b>	<b>3%</b>	<b>DISTRICT 10</b>	<b>\$ 481,285</b>	<b>\$ 495,272</b>	<b>3%</b>
Oakwood Lakes				Farm Island			
Lake Poinsett				West Bend			
Lake Thompson				<b>DISTRICT 11</b>	<b>\$ 374,666</b>	<b>\$ 395,900</b>	<b>6%</b>
<b>DISTRICT 4</b>	<b>\$ 566,962</b>	<b>\$ 605,671</b>	<b>7%</b>	Oahe Downstream			
Lake Herman				Cow Creek			
Walkers Point				Okobojo			
<b>DISTRICT 5</b>	<b>\$ 217,924</b>	<b>\$ 222,898</b>	<b>2%</b>	Spring Creek			
Snake Creek				<b>DISTRICT 12</b>	<b>\$ 382,599</b>	<b>\$ 387,168</b>	<b>1%</b>
Platte Creek				West Whitlock			
Burke Lake				East Whitlock			
Buryanek				Swan Creek			
<b>DISTRICT 6</b>	<b>\$ 317,223</b>	<b>\$ 317,531</b>	<b>0%</b>	Indian Creek			
Palisades				Lake Hiddenwood			
Lake Vermillion				Revheim Bay			
Big Sioux				Walth Bay			
<b>DISTRICT 7</b>	<b>\$ 517,430</b>	<b>\$ 556,108</b>	<b>7%</b>	West Pollock			
Newton Hills				<b>DISTRICT 13</b>	<b>\$ 287,553</b>	<b>\$ 283,125</b>	<b>-2%</b>
Good Earth				Mickelson Trail			
Lake Alvin				Bear Butte			
Union Grove				<b>DISTRICT 14</b>	<b>\$ 80,747</b>	<b>\$ 70,497</b>	<b>-13%</b>
Adams				Shadehill			
<b>DISTRICT 8</b>	<b>\$ 326,389</b>	<b>\$ 369,037</b>	<b>13%</b>	Llewellyn Johns			
				Rocky Point			
				<b>DISTRICT 15</b>	<b>\$ 327,922</b>	<b>\$ 323,051</b>	<b>-1%</b>
				Custer			
				<b>DISTRICT 16</b>	<b>\$ 2,848,503</b>	<b>\$ 2,999,182</b>	<b>5%</b>
				Angostura			
				Sheps Canyon			
				<b>DISTRICT 17</b>	<b>\$ 478,672</b>	<b>\$ 510,346</b>	<b>7%</b>
				<b>PIERRE OFFICE</b>	<b>\$ 172,937</b>	<b>\$ 184,789</b>	<b>7%</b>
				<b>TOTAL:</b>	<b>\$ 9,568,684</b>	<b>\$ 9,964,934</b>	<b>4%</b>



DIVISION OF PARKS AND RECREATION  
January TO June 2017 CAMPING UNIT COMPARISON BY DISTRICT

Park	2016 Units	2017 Units	%	Park	2016 Units	2017 Units	%
Fort Sisseton	857	859	0%	Lewis & Clark	16,832	17,658	5%
Pickerel Lake	2,727	2,947	8%	Chief White Crane	4,757	5,025	6%
Roy Lake	2,934	2,910	-1%	Pierson Ranch	1,859	2,018	9%
Sica Hollow	48	43	-10%	Springfield	457	565	24%
<b>District 1</b>	<b>6,566</b>	<b>6,759</b>	<b>3%</b>	Sand Creek	43	42	-2%
Richmond Lake	656	675	3%	Tabor	44	39	-11%
Mina Lake	1,127	1,356	20%	<b>DISTRICT 9</b>	<b>23,992</b>	<b>25,347</b>	<b>6%</b>
Fisher Grove	381	468	23%	North Point	4,260	4,339	2%
Amsden	116	102	-12%	North Wheeler	480	529	10%
Lake Louise	830	903	9%	Pease Creek	701	701	0%
<b>District 2</b>	<b>3,110</b>	<b>3,504</b>	<b>13%</b>	Randall Creek	3,167	3,572	13%
Hartford Beach	2,283	2,601	14%	South Shore	160	218	36%
Lake Cochrane	820	830	1%	South Scalp	24	43	79%
Pelican Lake	2,316	2,527	9%	Whetstone	340	266	-22%
Sandy Shore	502	484	-4%	White Swan	149	134	-10%
<b>District 3</b>	<b>5,921</b>	<b>6,442</b>	<b>9%</b>	<b>DISTRICT 10</b>	<b>9,281</b>	<b>9,802</b>	<b>6%</b>
Oakwood Lakes	3,852	4,148	8%	Farm Island	3,517	3,528	0%
Lake Poinsett	3,586	3,732	4%	West Bend	5,282	5,894	12%
Lake Thompson	3,136	3,165	1%	<b>District 11</b>	<b>8,799</b>	<b>9,422</b>	<b>7%</b>
<b>District 4</b>	<b>10,574</b>	<b>11,045</b>	<b>4%</b>	Oahe Downstream	6,860	7,102	4%
Lake Herman	2,668	2,612	-2%	Cow Creek	1,331	1,301	-2%
Walkers Point	1,269	1,365	8%	Okobojo Point	765	771	1%
Lake Carthage	194	204	5%	<b>District 12</b>	<b>8,956</b>	<b>9,174</b>	<b>2%</b>
<b>District 5</b>	<b>4,131</b>	<b>4,181</b>	<b>1%</b>	West Whitlock	2,720	2,747	1%
Snake Creek	5,024	4,914	-2%	East Whitlock	65	56	-14%
Platte Creek	866	1,068	23%	Swan Creek	464	534	15%
Burke Lake	24	18	-25%	Indian Creek	3,872	3,813	-2%
Buryanek	1,680	1,656	-1%	Lake Hiddenwood	205	131	-36%
<b>District 6</b>	<b>7,594</b>	<b>7,656</b>	<b>1%</b>	Walth Bay	21	16	-24%
Palisades	1,882	2,150	14%	West Pollock	481	580	21%
Lake Vermillion	3,771	4,290	14%	<b>District 13</b>	<b>7,828</b>	<b>7,877</b>	<b>1%</b>
Big Sioux	2,534	2,638	4%	Bear Butte Lake	303	292	-4%
<b>District 7</b>	<b>8,187</b>	<b>9,078</b>	<b>11%</b>	<b>District 14</b>	<b>303</b>	<b>292</b>	<b>-4%</b>
Newton Hills	4,292	4,465	4%	Shadehill	2,902	3,025	4%
Good Earth	-	3		Llewellyn Johns	234	252	8%
Union Grove	527	713	35%	Rocky Point	2,529	2,702	7%
<b>District 8</b>	<b>4,819</b>	<b>5,181</b>	<b>8%</b>	<b>District 15</b>	<b>5,665</b>	<b>5,979</b>	<b>6%</b>
				Custer	18,649	18,914	1%
				<b>District 16</b>	<b>18,649</b>	<b>18,914</b>	<b>1%</b>
				Angostura	7,437	8,281	11%
				Sheps Canyon	731	845	16%
				<b>District 17</b>	<b>8,168</b>	<b>9,126</b>	<b>12%</b>
				<b>TOTAL FEE AREA</b>			
				<b>CAMPER UNITS</b>	<b>142,543</b>	<b>149,779</b>	<b>5%</b>

**DIVISION OF PARKS AND RECREATION  
June YTD 2017 VISITATION COMPARISON**

Park	2016	2017	Change %
Fort Sisseton	23,625	21,784	-8%
Pickerel Lake	15,096	14,055	-7%
Roy Lake	67,862	62,540	-8%
Sica Hollow	7,094	6,072	-14%
<b>District 1</b>	<b>113,677</b>	<b>104,451</b>	<b>-8%</b>
Richmond Lake	16,540	20,915	26%
Mina Lake	19,843	21,426	8%
Fisher Grove	13,926	13,124	-6%
Lake Louise	9,948	14,676	48%
<b>District 2</b>	<b>60,257</b>	<b>70,141</b>	<b>16%</b>
Hartford Beach	43,303	43,223	0%
Lake Cochrane	3,318	4,779	44%
Pelican Lake	12,194	10,691	-12%
Sandy Shore	11,495	8,420	-27%
<b>District 3</b>	<b>70,310</b>	<b>67,113</b>	<b>-5%</b>
Oakwood Lakes	29,221	32,475	11%
Lake Poinsett	25,934	27,089	4%
Lake Thompson	20,159	20,298	1%
<b>District 4</b>	<b>75,314</b>	<b>79,862</b>	<b>6%</b>
Lake Herman	43,429	44,107	2%
Walkers Point	15,432	19,287	25%
<b>District 5</b>	<b>58,861</b>	<b>63,394</b>	<b>8%</b>
Snake Creek	77,808	81,299	4%
Platte Creek	64,369	57,494	-11%
Burke Lake	9,639	8,745	-9%
Buryanek	23,199	13,836	-40%
<b>District 6</b>	<b>175,015</b>	<b>161,374</b>	<b>-8%</b>
Palisades	40,507	43,319	7%
Lake Vermillion	46,563	49,165	6%
Big Sioux	25,136	25,055	0%
Beaver Creek	10,644	12,733	20%
<b>District 7</b>	<b>122,850</b>	<b>130,272</b>	<b>6%</b>
Newton Hills	41,216	52,432	27%
Good Earth	19,266	31,628	64%
Lake Alvin	10,738	16,318	52%
Union Grove	4,134	5,552	34%
Adams	15,793	14,966	-5%
Spirit Mound	5,831	7,356	26%
<b>District 8</b>	<b>96,978</b>	<b>128,252</b>	<b>32%</b>

Park	2016	2017	Change %
Lewis & Clark	300,775	296,001	-2%
Chief White Crane	25,077	23,724	-5%
Pierson Ranch	28,431	31,459	11%
Springfield	43,915	44,933	2%
<b>District 9</b>	<b>398,198</b>	<b>396,117</b>	<b>-1%</b>
North Point	56,877	47,100	-17%
North Wheeler	8,860	8,174	-8%
Pease Creek	16,848	17,044	1%
Randall Creek	17,833	21,124	18%
Ft. Randall Boat Club	8,322	7,762	-7%
<b>District 10</b>	<b>108,740</b>	<b>101,204</b>	<b>-7%</b>
Farm Island	65,390	72,534	11%
West Bend	26,365	26,641	1%
LaFramboise Island	38,749	37,304	-4%
<b>District 11</b>	<b>130,504</b>	<b>136,479</b>	<b>5%</b>
Oahe Downstream	213,206	202,440	-5%
Cow Creek	91,900	112,250	22%
Okobojo Point	20,499	16,820	-18%
Spring Creek	54,371	66,120	22%
<b>District 12</b>	<b>379,976</b>	<b>397,630</b>	<b>5%</b>
West Whitlock	37,316	41,663	12%
Swan Creek	31,040	37,283	20%
Indian Creek	35,711	30,098	-16%
Lake Hiddenwood	11,604	9,878	-15%
Revheim Bay	23,727	21,863	-8%
West Pollock	33,853	32,055	-5%
<b>District 13</b>	<b>173,251</b>	<b>172,840</b>	<b>0%</b>
Bear Butte	17,177	11,179	-35%
<b>District 14</b>	<b>17,177</b>	<b>11,179</b>	<b>-35%</b>
Shadehill	16,688	18,730	12%
Llewellyn Johns	3,219	3,322	3%
Little Moreau	7,022	5,228	-26%
Rocky Point	39,035	47,292	21%
<b>District 15</b>	<b>65,964</b>	<b>74,572</b>	<b>13%</b>
Custer	785,274	753,114	-4%
<b>District 16</b>	<b>785,274</b>	<b>753,114</b>	<b>-4%</b>
Angostura	85,167	84,131	-1%
Sheps Canyon	26,584	22,800	-14%
<b>District 17</b>	<b>111,751</b>	<b>106,931</b>	<b>-4%</b>
<b>TOTALS:</b>	<b>2,944,097</b>	<b>2,954,925</b>	<b>0%</b>

**South Dakota Department of Game, Fish & Parks - Wildlife Division  
Land Acquisition and Disposal Report  
July 2017**

**Final Action Items**

**Jonathan Knisley Memorial WAA (Barrett Property)**

**Location:** Hamlin County

**Description:** 1.2 acre Water Access Area

**Management Objective:** Public Water Access Area at Lake St. John.

One-time development costs include signage, grading, and graveling.

Future annual management responsibilities include noxious weed control and routine maintenance of public water access facilities.

**Cost:** Donation

**Commission Acquisition Priorities:** Parcels that address public access needs to fisheries and water-based recreation resources.

**Expected Closing:** July 2017

**Requested Commission Action:** Adopt RESOLUTION 17-08 accepting the property donation as a Water Access Area.

**Information Items:**

**North Sanborn GPA Inholding Property**

**Location:** Sanborn County

**Description:** 1.13 acre inholding to the North Sanborn GPA

**Management Objective:** Game Production Area – wildlife habitat management and public hunting access

**Acquisition Cost:** \$2,036.00

**Commission Acquisition Priorities:** In-holding parcels that consolidate or connect existing Department lands.

**Expected Closing:** October 2017

**Early Development Projects**

**Addition to Bitter Lake GPA**

**Location:** Day County

**Description:** 580 acres

**Management Objective:** Game Production Area – wildlife habitat management and public hunting access

**Acquisition Cost:** Under negotiation

**Expected Closing:** Unknown

## RESOLUTION 17 - 08

WHEREAS, Lois A. Barrett and Richard A. Barrett, 19510 450th Avenue, Lake Norden, SD 57248, own real estate (Property) described as:

Barrett Addition in Government Lot 4 of Section 33, Township 113 North, Range 53 West of the 5th P.M., Hamlin County, South Dakota;  
and

Whereas, pursuant to their wishes, Lois A. Barrett and Richard A. Barrett desire to gift and transfer title to the Property to the South Dakota Department of Game, Fish and Parks (Department), for use as a Water Access Area; and

Whereas, the Department has evaluated and determined that the Property would serve very well as a Water Access Area, offering fishing and boating access and other recreational opportunities; and

Whereas, the Department is authorized to accept gifts of property for recreational purposes as per SDCL 41-2-19 and 41-2-21 and desires to accept the gift of the Property upon confirmation of the gift by the Game, Fish and Parks Commission; and

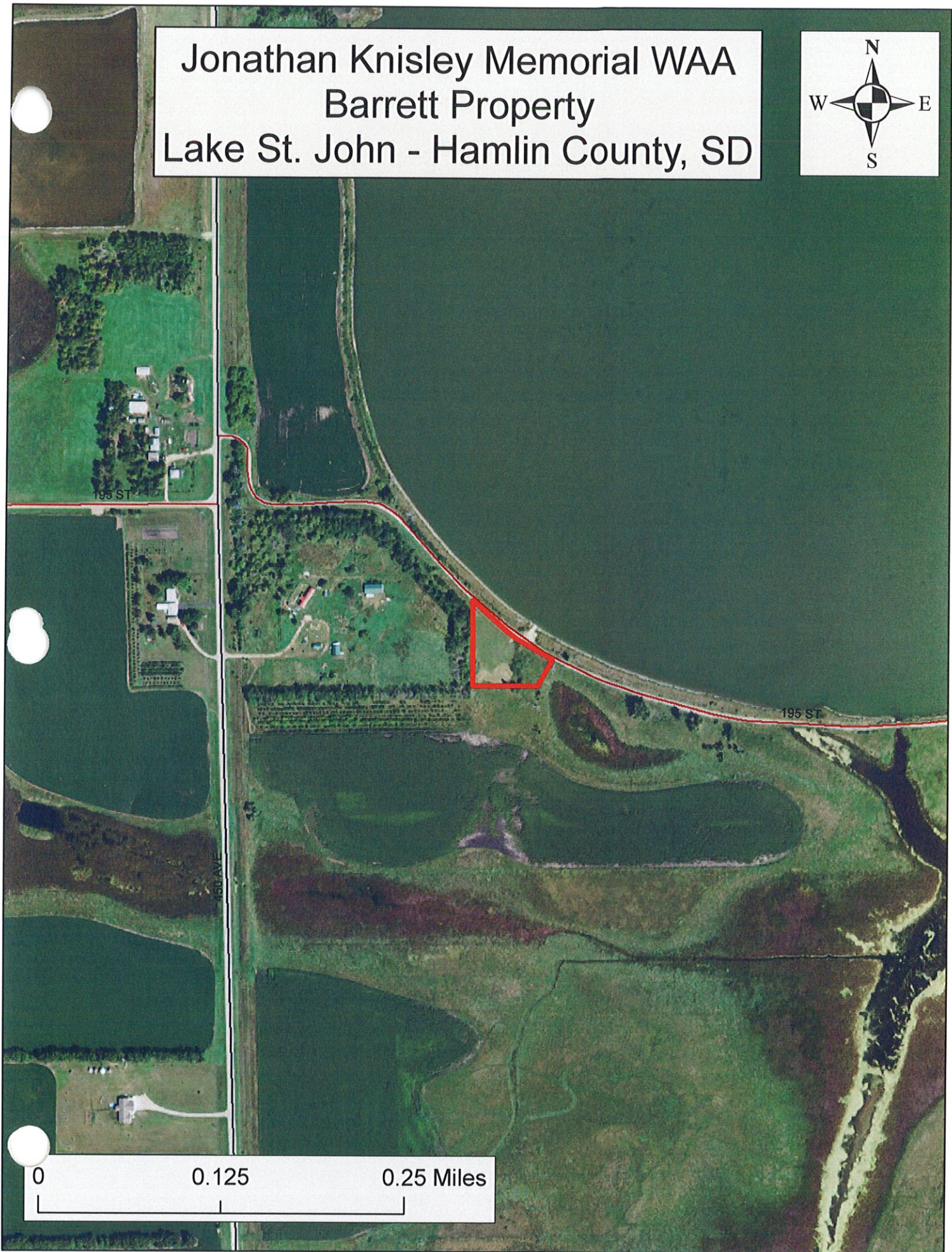
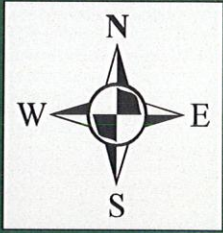
Whereas, the South Dakota Game, Fish & Parks Commission desires to acknowledge the Department's acceptance of this gift of property from Lois A. Barrett and Richard A. Barrett for use as a Water Access Area, and further acknowledge the extreme generosity of Lois A. Barrett and Richard A. Barrett.

NOW, THEREFORE, BE IT RESOLVED, that the South Dakota Game, Fish and Parks Commission does hereby confirm the decision by the Department to accept the transfer and gift of the Property from Lois A. Barrett and Richard A. Barrett to be used as a Water Access Area.

BE IT FURTHER RESOLVED, that the South Dakota Game, Fish & Parks Commission, on behalf of the citizens and sportspersons of South Dakota, does hereby acknowledge and express its deepest appreciation and gratitude to Lois A. Barrett and Richard A. Barrett for their generosity, and further acknowledge the outdoor recreation opportunities this gift will provide to South Dakotans for many years to come.



Jonathan Knisley Memorial WAA  
Barrett Property  
Lake St. John - Hamlin County, SD



0 0.125 0.25 Miles



# Sanborn County ROW Addition to North Sanborn GPA





GAME, FISH AND PARKS COMMISSION ADMINISTRATIVE ACTION

**DEER MANAGEMENT PLAN**

Commission Meeting Dates:	Presented to Commission	June 8-9, 2017	Oacoma
	Plan Adoption	July 13-14, 2017	Pierre

**ADOPTION OF DEER MANAGEMENT PLAN**

Formal adoption of the "South Dakota White-tailed Deer and Mule Deer Management Plan, 2017-2023".





June 23, 2017

South Dakota Game, Fish & Parks Commission  
Secretary Kelly Hepler  
523 East Capitol Avenue  
Pierre, South Dakota 57501

Dear Commission members and Secretary Hepler,

The Rocky Mountain Elk Foundation (RMEF) requests consideration by the Commission and Department to allow RMEF to participate in the South Dakota Special Elk Permit Raffle program for 2016-2017 as described in Chapter 41:06:27 of your rules. The RMEF appreciates the opportunity to continue this highly successful partnership. Revenues generated since this relationship was formed in 1990 continue to benefit elk and other wildlife in South Dakota.

Please accept the enclosed information as our official application under the terms and conditions listed in Rule 41:06:27:02.03.

Enclosed are:

1. A letter from Tom Slowey, Eastern South Dakota Regional Director;
2. RMEF's Federal Tax Exempt ID Number;
3. A copy of our report to SDGFP which describes the results of the 2016-2017 South Dakota Special Elk Permit Raffle;
4. Drawing results of the 2016-2017 Raffle;
5. South Dakota RMEF project summary through December 2016

The RMEF volunteers of the State of South Dakota recognize the positive impact that funds raised through the sale of the Special Elk Permit raffle program have on Department goals, especially in these

## SOUTH DAKOTA PRIVATE SHOOTING PRESERVES

<u>YEAR</u>	<u>NOT RENEWED</u>	<u>RENEWED</u>	<u>NEW</u>	<u>TOTAL</u>
2008-09	9	208	21	229
2009-10	17	204	16	220
2010-11	30	192	18	207
2011-12	23	189	8	197
2012-13	12	185	18	203
2013-14	16	187	14	201
2014-15	18	183	14	194
2015-16	13	181	19	200
2016-17	17	183	14	197
2017-18	2	195	19	214

## PRIVATE SHOOTING PRESERVE PHEASANT HARVEST AND RELEASE RECORDS

<u>YEAR</u>	<u># OF PSP'S</u>	<u>SPECIES</u>	<u>BIRDS RELEASED</u>	<u>TOTAL BIRDS HARVESTED</u>	<u>RELEASED BIRDS HARVESTED</u>	<u>WILD BIRDS HARVESTED</u>
2007-08	223	Pheasants	439,454	278,242	214,066 (77%)	63,152 (23%)
2008-09	229	Pheasants	394,184	262,709	198,895 (76%)	63,914 (24%)
2009-10	220	Pheasants	375,273	227,138	177,638 (78%)	50,180 (22%)
2010-11	207	Pheasants	356,727	242,705	185,094 (76%)	57,611 (24%)
2011-12	197	Pheasants	386,563	243,196	200,337 (82%)	43,744 (18%)
2012-13	203	Pheasants	371,305	237,965	202,991 (85%)	36,630 (15%)
2013-14	201	Pheasants	434,005	260,426	234,590 (90%)	25,836 (10%)
2014-15	194	Pheasants	420,074	268,316	234,003 (87%)	34,313 (13%)
2015-16	200	Pheasants	432,304	276,383	243,168 (88%)	33,196 (12%)
2016-17	197	Pheasants	438,287	280,536	250,029 (89%)	30,507 (11%)

## PRIVATE SHOOTING PRESERVE OTHER GAME BIRD HARVEST AND RELEASE RECORDS

<u>SPECIES</u>	<u>BIRDS RELEASED</u>	<u>TOTAL HARVESTED</u>	<u>PERCENTAGE</u>
Partridge	8232	3552	43%
Quail	0	0	0%
Turkey	10	0	0%





# License Sales Totals

(as of July 7)

*date updated: 7 July 2017*

Resident	2017	2016
Combination	40,653	41,178
Junior Combination	5,815	5,982
Senior Combination	8,075	7,483
Small Game	1,490	1,656
Youth Small Game	825	808
1-Day Small Game	184	231
Migratory Bird Certificate	13,799	13,603
Predator/Varmint	1,066	1,341
Furbearer	2,225	2,276
Annual Fishing	54,293	55,351
Senior Fishing	11,914	11,550
1-Day Fishing	3,492	3,247
Gamefish Spearing/Archery	2,616	2,446
Nonresident	2017	2016
Small Game	2,398	3,082
Youth Small Game	205	257
Annual Shooting Preserve	74	78
5-day Shooting Preserve	600	576
1-day Shooting Preserve	217	301
Spring Light Goose	4,492	3,965
Youth Spring Light Goose	159	138
Migratory Bird Certificate	351	258
Predator/Varmint	3,498	3,415
Furbearer	2	3
Annual Fishing	22,815	24,190
Family Fishing	7,742	8,154
Youth Annual Fishing	1,089	1,302
3-Day Fishing	15,154	15,911
1-Day Fishing	13,623	13,445
Gamefish Spearing/Archery	585	598
<b>TOTAL ON FILE =</b>	<b>219,451</b>	<b>222,825</b>