



AGENDA

Game, Fish and Parks Commission

January 4-5, 2022

Matthews Training Center – Pierre, SD

Livestream link <https://www.sd.net/remote1/>

Due to concerns regarding COVID, this meeting will be held via zoom/conference call and livestream. To listen to the entire meeting beginning at 1:00 p.m. CT via livestream at <https://www.sd.net/>. **The public is encouraged to participate remotely to limit our number of in person attendees and ensure social distancing.**

The open forum will begin at 2:00 p.m. CT on January 4th. To provide comments join the meeting via zoom or conference call per the info below. To conduct the public hearing and open forum as efficiently as possible we ask those wishing to testify to **register by 1:00 pm CT by email to Rachel.comes@state.sd.us. Testifiers should provide their full names, whom they are representing, city of residence, and which proposed topic they will be addressing.**

Written comments can be submitted at <https://gfp.sd.gov/forms/positions/>. To be included in the public record comments must include full name and city of residence and meet the submission deadline of seventy-two hours before the meeting (not including the day of the meeting)

Click on the link below to join Zoom Meeting. Depending on the application you use you may be required to enter the meeting ID and password. Remember to **enter your display name and mute your microphone**. To help keep background noise and distractions to a minimum, make sure you **mute your microphone and turn off your video** when you are not speaking.

TUESDAY

Zoom Meeting Link <https://state-sd.zoom.us/j/97856617225?pwd=WC9Nbm1RVEVMQVgvTktBNm8xcGRXQT09>
or join via conference call Dial 1 669 900 9128 Meeting ID: 978 5661 7225 Password: 030115

WEDNESDAY

Zoom Meeting Link <https://state-sd.zoom.us/j/99124921708?pwd=dyttTFNVL0d6a0NhUVFiemhwRnRVUT09>
or join via conference call Dial 1 669 900 9128 Meeting ID: 991 2492 1708 Password: 793943

Call to order 1:00 PM CT/ 12:00 AM MT

Division of Administration

Action Items:

1. Conflict of Interest Disclosure
2. Approve Minutes of the December 2021 Meeting
<https://gfp.sd.gov/commission/archives/>

3. Additional Commissioner Salary Days
4. Election of Officers

Information Items:

5. Legislative Update
6. Budget Presentation
7. Go Outdoors SD Update
8. Rapid City Shooting Range Update

Petitions

9. Adding Butte County to Unit 2 for Goose Hunting Season

Open Forum 2:00 PM

Portion of the meeting designated for public comment on other items of interest. *(Typically limited to 3 minutes per person)*

Proposals

10. Elk Seasons
11. Bighorn Sheep
12. Public Waters
13. License Agent Processes
14. Cancellation Policy

Division of Parks and Recreation

Information Items:

15. Sylvan Lake Lodge Fire
16. Custer State Park Buffalo Auction Results
17. Custer State Park Resort Repair and Maintenance Plan Update
18. Lake Vermillion SE Boat Ramp Park Entrance License Requirement
19. Fort Sisseton Master Plan Update
20. Year in Sales and Revenue Report

Division of Wildlife

Action Items:

21. Bighorn Sheep Auction License
22. Sage Grouse Plan

Information Items:

20. Bighorn Sheep Status
21. License Sales Update
22. EHD Impact on Licenses
23. Lake Oahe Fishery Update
24. Habitat and Access Update
25. Walk In Area Survey

Solicitation of Agenda Items from Commissioners

Adjourn

Next meeting information: March 3-4, 2022 – Pierre, SD

**Minutes of the Game, Fish, and Parks Commission
December 9-10, 2021**

Chairman Russell Olson called the meeting to order at 2:00 p.m. CT. Commissioners Julie Bartling (via zoom), Travis Bies, Jon Locken, Stephanie Rissler, Doug Sharp, Charles Spring, Robert Whitmyre and Russell Olson were present. Public and staff were able to listen via SDPB livestream and participate via video conference or in person with approximately 70 total participants via zoom and in person.

DIVISION OF ADMINISTRATION

Conflict of Interest Disclosure

Chairman Olson called for conflicts of interest to be disclosed. None were presented.

Approval of Minutes

Olson called for any additions or corrections to the November 4-5, 2021 regular meeting minutes or a motion for approval.

Motion by Whitmyre with second by Locken TO APPROVE THE MINUTES OF THE NOVEMBER 4-5, 2021 MEETING. Motion carried unanimously.

Additional Commissioner Salary Days

Olson called for additional salary days. Bies, Spring and Whitmyre each submitted 1 salary day (Elk Meeting), Motion by Rissler with second by Sharp TO APPROVE THE SALARY DAY AS REQUESTED. Motion carried unanimously.

SDSU Natural Resource Management

John Killefer, Dean of College of Ag, Food and Environmental Sciences, provided update on current projects and facilities. including ag programs specifically precision ag, precision ranching,

Go Outdoors SD Demo

Heather Villa, admin chief provided a demo

onX Update

Nick Harrington, communication manager provided an update

OPEN FORUM

Jon Kotilnek, senior staff attorney, opened the floor for discussion from those in attendance on matters of importance to them that may not be on the agenda. None presented.

PETITION

Elk Drawing Structure

Kirschenmann informed the Commission that the petition was withdrawn.

PROPOSALS

Public Waters

Jacquie Ermer, wildlife regional supervisor and Becky Graf, park manager, presented the recommended changes to remove no boating zones and allow for non-

motorized watercraft within the Waubay National Wildlife Refuge and Waubay State Game Bird Refuge. They explained GFP and the USFWS have been in collaboration to discuss ways to increase recreational opportunities, while still meeting the objectives of the refuge system. The USFWS Refuge System recently removed restrictions to increase outdoor opportunities at Waubay National Wildlife Refuge within their mission and management responsibilities. These respective administrative rules are prohibiting the USFWS from allowing these outdoor opportunities.

License Agent Process

Keith Fisk, program manager, presented the recommended change to modify two administrative rules to align new business practices with GFP's new licensing system and requirements. To adjust electronic ACH transfers, processes, and timeframe for payments and remove the use of Emergency Authorization books. He explained GFP will be launching the new licensing system on December 15, 2021. Once this occurs, license agents will be required to work within new business practices (i.e. electronic ACH transfers and different timeframes when the electronic money sweeps occur) to continue to be a license agent for GFP. License agents serve an important role for selling licenses on behalf of GFP as well as providing hunters with the ability to purchase hunting and fishing licenses outside normal business hours that GFP offices are open. As technology advances, the ability to sell paper hunting and fishing licenses is no longer needed. Customers will be able to purchase licenses online (through GFP's licensing website) or by visiting a license agent or by calling GFP's call center.

Camping Reservation Refund Policy

Scott Simpson, division director, presented the recommended changes to allow for cancellation of campsites and lodging facilities without fee for a period of time after a reservation is made. After that period has elapsed, a fee of one-half of the first night's camping or lodging fees will be assessed for both types of overnight use. This rule proposal helps simplify cancellation policies and associated fees by providing one cancellation procedure for campsites, and one for lodging facilities and Custer State Park French Creek Horse Camp. Simpson further explained The Department's cancellation policy was developed at a time of lower demand for camping and lodging facilities, and the ability to resell those facilities was more difficult. The current procedure is to assess a cancellation fee of one-night's camping or \$25 for cabins/lodges effective immediately after the reservation is made. With the increased demand for camping and lodging facilities, the ability to fill those vacancies left by cancellations is much more likely. This change will also help the Department be more consistent with industry cancellation standards, and allow more flexibility of users to cancel a reservation without penalty due to unforeseen circumstances.

DIVISION OF PARKS AND RECREATION

Land Acquisition – Spring Creek Lot 17 Purchase Approval

Scott Simpson provided

Motioned by Bies, second by Whitmyre TO APPROVE THE LAND PURCHASE PER RESOLUTION 21-21 (appendix A)

SDSU Conservation Planning and Park Management Update

Jennifer Cheek, presented to the Commission

Lodging Price Structure Review

Al Nedved provided information.

DIVISION OF WILDLIFE

Beaver Management in the Black Hills

Trenton Haffley, provided information.

Deer Drawing Follow up

Andrew Norton provided information.

Canada Goose Depredation

Emmett Keyser and Jacquie Ermer provided information

Licenses Sales Update

Tom Kirschenmann, wildlife division director, provided an update on resident and nonresident license sales.

River Otter Season

Keith Fisk provided information

Track Wheelchairs

Emmett Keyser provided information

Adjourn

Meeting adjourned at 4:30 p.m.

Respectfully Submitted,



Kevin Robling, Department Secretary

Appendix A
Resolution 21-21

WHEREAS, Codger's Cove Development, LLC owns real estate (Property) described as:

LOT 17, CODGER'S COVE SUBDIVISION A REPLAT OF A PORTION OF TRACT 1, CODGER'S COVE ADDITION IN THE E1/2 OF SECTION 32, AND THE W 1/2 OF SEC. 33 AND A REPLAT OF A PORTION OF TRACTS 5 AND 6, OAHE TRAILS SUBDIVISION IN THE W 1/2 OF SEC. 33, T113N, R80W OF THE 5TH P.M., SULLY COUNTY, SOUTH DAKOTA

Whereas, pursuant to its wishes, Codger's Cove Development, LLC desires sell title to the Property to the South Dakota Department of Game, Fish and Parks (Department) for use for parks and recreation purposes; and

Whereas, the Department has evaluated and determined that the Property would serve very well as a park or recreational area, and

Whereas, the Department is authorized to purchase property for park and recreational use per SDCL 41-2-19 and desires to purchase the Property upon confirmation of the purchase by the Game, Fish and Parks Commission; and

NOW, THEREFORE, BE IT RESOLVED, that the Game, Fish and Parks Commission does hereby confirm the decision by the Department to purchase the Property from Codger's Cove Development, LLC to be used as by the parks division.

Comes, Rachel

From: info@gfp.sd.us
Sent: Saturday, December 11, 2021 11:15 AM
To: Williamsian921@icloud.com
Cc: Comes, Rachel
Subject: Petition for Rule Change Form

Categories: Commission

South Dakota - Game, Fish, and Parks

Petition for Rule Change

A new form was just submitted from the <http://gfp.sd.gov/> website with the following information:

ID: 125
Petitioner Name: Ian Williams
Address: 921 Arthur
Whitewood , SD 57793
Email: Williamsian921@icloud.com
Phone: 605-269-1013
Rule Identification: Putting butte county for geese into unit 2
Decribe Change: The reason I would like to see butte county into unit 2 for geese is because the geese are in the area by the end of the season
Reason for Change: The are in the area by the end of December first part of January

From: [Comes, Rachel](#)
To: [Kirschenmann, Tom](#); [Kotilnek, Jon](#)
Subject: FW: Petition for Rule Change Form
Date: Thursday, December 30, 2021 9:52:23 AM

From: info@gfp.sd.us <info@gfp.sd.us>
Sent: Wednesday, December 29, 2021 1:46 PM
To: plattecreek@midstatesd.net
Cc: Comes, Rachel <Rachel.Comes@state.sd.us>
Subject: Petition for Rule Change Form

South Dakota - Game, Fish, and Parks

Petition for Rule Change

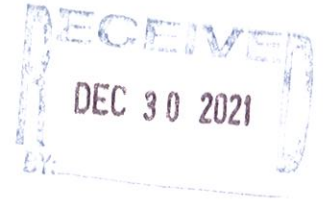
A new form was just submitted from the <http://gfp.sd.gov/> website with the following information:

ID: 126
Petitioner Name: Tom steinhauser
Address: 36537 Platte Lake Rd
PLATTE, SD 57369-6354
Email: plattecreek@midstatesd.net
Phone: 605-941-1679
Rule Identification: 41.07.03.03
Describe Change: Retract the first 4 fish kept
Reason for Change: Petition for rule Change Amend 41:07:03:03 As the owner of Platte Creek Lodge in Platte, SD and fishing mainly Lake Francis Case, we have always had an issue in the winter with the regulation that states when ice fishing you must keep the first four walleye you catch. This regulation has a direct economic impact on our business. People will inquire about coming, and after learning about this regulation they chose not to come. They are having to pay \$67 for a license, \$25 for a habitat stamp which brings them to \$92. If they add the cost of a guide or lodging to that, they feel it's not worth coming out for. So, Platte Creek Lodge and all other local businesses lose out. Not to mention the possible license revenue to the state. Fishing on Lake Francis Case typically occurs in the 30 foot range. Fisherman on Lakes Sharpe and Oahe fish the same depths or deeper water and have no regulations about keeping the first 4 fish. Additionally, we don't always fish that depth. A lot of the time we are fishing in 10-20 feet of water. Also, this seems to be a social regulation and not a biological regulation. In my opinion more fish are lost due to deep hooking and warm water fishing than are lost in the winter due to deep water. There is a deep water trolling program in the summer that is heavily utilized and the catch is much more than the ice catch. Ice anglers on Lake Francis Case catch a fraction of the fish that the open water or summer fishermen catch. Additionally, the day the the ice comes off we can fish the same spot and the same fish in the same depth in a boat and catch and throw back as we please. Local talk around town suggests that people are not following this rule. This rule is difficult to enforce because people fish in shacks and you can't see them. Thank you and please consider amending this rule to simplify and help us and other businesses. Sincerely, Tom Steinhauser



South Dakota Migratory Bird Association

19052 Hwy 1804
Pierre, SD 57501



Dec. 29, 2021

Sec. Kevin Robling, Department of Game, Fish
and Parks

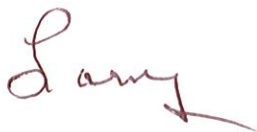
IE-Petition to the Commission

We've agreed with our legislators in petitioning and asking the Commission at this time, in the matter of making the DeGrey and Pierre waterfowl refuges permanent by Commission action, rather than the legislative process. To refresh your memory is a copy of the April letter that began the process.

I've asked Steve Nelson, our lobbyist, to work with one of your staff in preparing the document.

Senator DuVall would like us to to the petition first. In a nutshell, the DeGrey refuge description would not change, the Pierre refuge would be slightly enlarged to include the area downriver from Framboise Island to the tip of Farm Island and upstream above Oahe Dame from Corp Bay area to the tip of Peoria Flats. Both have been waterfowl refuges for over 50 years.

Thank You,

A handwritten signature in red ink that reads "Larry". The signature is written in a cursive style with a long horizontal stroke at the end.

Larry Steffen, president South Dakota
Migratory and Upland Gamebird assn.

Cc: Tom Kirschenmann, wildlife division
director



Petition for Rule Change

Changes in Administrative Rules require action by the [GFP Commission](#). State statute provides a process for individuals to formally request that the [GFP Commission](#) take action to adopt, amend or repeal an administrative rule.

This process requires individuals to submit the following information:

- Text of a new rule, amendment to existing rule, or request to repeal a rule;
- Identification of the rule itself;
- Reasons for changes; and
- Full name and mailing address.

Upon receipt of the below form, the [GFP Commission](#) must act within 30 days to either accept the petition and initiate the process of making the change or deny the request and state its reasons for the denial.

Petitioner

First Name This is a required field.

Larry Steffen, Pres. SD M. R. V. P. and Up. Itab. & the bird H.S.W.

Last Name This is a required field.

Steffen

Address 19052 Hwy 1804

City Pierre

State SD
South Dakota

Zip 57501

Email

Phone

XXX-XXX-XXXX 605 264 5577

Petition Information

Rule Identification

Describe the change you are seeking
This is a required field.

See Attached
???
make the De Grey + Pierre waterfowl refuges permanent

Explain the reason for the described change
This is a required field.

Enhance land waterfowl hunting opportunities
protection of host goose flock

I'm not a robot

reCAPTCHA
Privacy - Terms

SD Game, Fish and Parks Commission

Petition For Rule Change Dec, 30, 2021

Larry Steffen, president SD Migratory and Upland
Gamebird association,

19053 Hwy 1804

Pierre, SD 57501

605 264 5577

Rule Identification

Describe the change you are seeking

Establish permanency and modification of the Pierre
Missouri river waterfowl refuge and permanency of the
DeGrey refuge for the next 50 years.

Explain the Reason For The Described Change

Enhancement of over-the-land hunting for geese on
private and public lands along the river as well as
providing safe places for the area goose flock where they
can rest undisturbed and safely. Protecting the present

flock now should insure hunting opportunities for those who live in the Pierre area and come to Pierre from all across the state to hunt. The Pierre and area flock is basically the last in the state. Modification of the Pierre refuge to include the area downstream from LaFramboise island in the city and upstream from the Corp Bay area to the tip of Peoria Flat would be a tiny increase in the refuge size and beneficial to the waterfowl and those who hunt them. The Pierre area would be a waterline refuge below the city while the upstream are above the dam would continue as a take-line refuge. There would be no change in the description of the DeGrey refuge.

We feel this change would enable us to keep the size of the flock at what we have and perhaps increase it, however not to the numbers we have had in the past.

We have asked our legislators to introduce a bill to accomplish what we are asking the commission to do and feel by going to the commission first is the best way to begin a process.

Larry Steffem

Dec. 24, 2021

Memo To: Sen. Mary Duvall, Representatives Mike Weisgram and Will Mortenson.

From Larry Steffen, president SD Migratory and Upland Bird Association—re: April 2. Letter

In reference to my April letter asking you to introduce a bill to make the DeGrey and Pierre waterfowl refuges permanent. Our association would still like you to do that and would feel free to meet with you any time at Your convenience.

The enclosed letter sent to you earlier explains the need and we urge you to introduce legislation this session.

Sincerely,

Larry Steffen, president Vice-president Terrance Etzkorn, Treasurer, Mike Finley, Secretary, Mike Shaw
Directors—Brad Garrrett, Randy Rasmussen, Walt Bixler

---reiterating--each individual commission would have their own bounty system, it would be a Class 1

April 2, 2021

To: Senator Mary Duvall, Rep. Will Mortenson, Rep. Mike Weisgram

From: Larry Steffen president SD Migratory Bird Assn.

Subject: 2022 Legislation, Pierre, DeGrey Missouri river waterfowl refuges.

The South Dakota Migratory Bird association at their last meeting voted unanimously to ask the legislators of District 24 to introduce a bill in next year's session that would make the Pierre and De-Grey waterfowl refuges on the Missouri river permanent by law.

Both of those refuges have been refuges on the river for over 60 years by Game, Fish and Parks commission actions.

The reasons for making them permanent is two-fold: have an area where waterfowl are protected for the future and insure future over-the land hunting opportunities..

There would be no change in the DeGrey refuge. In the Pierre areas refuge, which at the present extends from the tip of LaFramboise island to ½ mile above Oahe dam should be enlarged to include the area from the tip of Laframboise to the tip of Farm Island including the Farm Island Recreation area(and remain a waterline refuge)and the area above the dam from the half-mile mark to the tip of Peoria Flats(which should remain a take-line refuge). SEE MAPS

Besides protecting the geese while they are on the water, it may also move some of the in-city geese(Pierre, Fort Pierre, Capitol Lake flocks) out to the river, an area where they would prefer to be.

We are asking you to be the lead sponsors, mainly because it is a Pierre area bill, but also realizing that all South Dakota goose hunters come to the Pierre area as it is one of the few places left in the state where decent over-the-land hunting occurs. This would also offer the public more areas of public hunting, as well as possibly enhancing hunting on private lands, and Game, Fish and Parks leased lands like the Sheehan area north of Pierre.

This would also still leave an area for the few over-the-water goose hunters left from the tip of Farm Island downriver to where the DeGrey refuge begins, and includes the Antelope Island area.

Sincerely,

Larry Steffens, president

PS Our organization still has about 1,000 members, half of them non-residents and half residents. Well over half of our resident members are from the Hughes, Sully and Stanley counties area. We were incorporated in 1974.

Curt Underhill, executive director

Steve Nelson, lobbyist

GAME, FISH AND PARKS COMMISSION ACTION PROPOSAL

Black Hills Elk Hunting Season Chapter 41:06:26

Commission Meeting Dates:	Proposal Public Hearing Finalization	January 4-5, 2022 April 7, 2022 April 7-8, 2022	Pierre Watertown Watertown
----------------------------------	---	--	---

DEPARTMENT RECOMMENDATION

Duration of Recommendation: 2022 and 2023 hunting seasons.

Season Dates:

Units	2022 Hunting Season Dates	2023 Hunting Season Dates
Any Elk Units	October 1 -31	October 1 -31
Antlerless Elk Units: H1B, H4B, H7B, and H9B	October 15-31 AND December 1-16	October 15-31 AND December 1-16
Antlerless Elk Units: H2B, H2E, H2H, H3B, and H3E	October 15-31	October 15-31
Antlerless Elk Units: H2C, H2F, H2I, H3C, and H3F	December 1-16	December 1-16
Antlerless Elk Units: H2D, H2G, H2J, H2D, and H3G	December 17-31	December 17-31

Open Area: See attached maps.

Licenses: 430 "any elk" and 715 "antlerless elk" licenses (total of 1,145 licenses)

Requirements and Restrictions:

1. No person may possess more than one (1) elk license of any type in a year.
2. No more than two persons may submit applications together.
3. Except for landowner/operator preference applicants, no person who receives a license in the first drawing for this season shall be eligible to apply for a Black Hills elk license in first drawings for the next 9 years.
4. One-half of the licenses allocated in each unit are available for landowner/operator preference. One member of each qualifying landowner/operator household may apply every year.
5. Any elk that is harvested must be inspected by a Conservation Officer or designee within 24 hours after kill.

Recommended changes from last year:

1. Adjust the total number of available licenses from 425 "any elk" and 700 "antlerless elk" licenses (total of 1,125 licenses) to no more than 500 "any elk" and 1,000 "antlerless elk" licenses (total of 1,500 licenses).
2. Modify the boundaries of BHE-H9A and BHE-H9B to correct unit boundary.

SUPPORTIVE INFORMATION

The recommended maximum number of elk licenses will be established in administrative rule and the GFP Commission via administrative action will determine specific number of licenses by tag types and allocation amongst hunting units.

Updated population objectives and any recommended license adjustments will be shared at the March Commission meeting once preliminary harvest estimates have been obtained and population modeling exercises have been completed.

There is currently a small geographic area that technically does not reside in any elk hunting unit; this unit boundary modification will correct this oversight.

APPROVE _____	MODIFY _____	REJECT _____	NO ACTION _____
----------------------	---------------------	---------------------	------------------------

Year	Licensed	Hunter	Bulls	Cows
	Hunters	Success	Harvested	Harvested
2016	1,745	62%	363	724
2017	1,581	66%	366	684
2018	1,124	64%	315	402
2019	1,108	62%	332	354
2020	926	63%	360	224

2020 Unit	"Any Elk"					"Antlerless Elk" (All Units Combined)				
	Appl.1st Choice	Licensed Hunters	Harvest Success	Bulls Harvested	Cows Harvested	Appl.1st Choice	Licensed Hunters	Harvest Success	Bulls Harvested	Cows Harvested
H1	1,293	49	83%	39	1	56	15	67%	0	10
H2	9,006	237	87%	197	9	524	106	44%	0	47
H3	1,645	99	80%	74	5	89	265	38%	9	91
H4	76	20	100%	20	0	11	40	73%	1	24
H5	74	5	75%	3	1	NA	NA	NA	NA	NA
H7	334	20	75%	10	5	25	15	64%	0	10
H9	63	15	88%	11	2	2	40	52%	0	21

DRAFT ADMINISTRATIVE RULE CHANGES

The following are proposed draft changes that are intended to incorporate the recommended changes adopted by the Commission.

41:06:26:01. Black Hills elk hunting season established -- Number and type of licenses -- Season dates. The Black Hills elk hunting season is open from one-half hour before sunrise to one-half hour after sunset each day of the season. No more than ~~450~~ 600 "any elk" licenses and ~~490~~ 1,000 "antlerless elk" licenses may be issued for the Black Hills elk hunting season. The Black Hills elk hunting seasons are as follows:

- (1) Units BHE-H1A, BHE-H2A, BHE-H3A, BHE-H4A, BHE-H5A, and BHE-H7A are open from October 1 through October 31;
- (2) Units BHE-H1B, BHE-H2B, BHE-H2E, BHE-H7B, and BHE-H9B are open from October 15 through October 31 and from December 1 through December 16;
- (3) Units BHE-H2H, BHE-H3B, and BHE-H3E are open from October 15 through October 31;
- (4) Units BHE-H2C, BHE-H2F, BHE-H2I, BHE-H3C, and BHE-H3F are open from December 1 through December 16; and
- (5) Units BHE-H2D, BHE-H2G, BHE-H2J, BHE-H3D, and BHE-H3G are open from December 17 through December 31.

41:06:26:02. Open units. The following is a description of the open units for the Black Hills elk hunting season:

- (12) Units BHE-H9A and BHE-H9B: those portions of Custer and Pennington Counties within an area bounded as follows: beginning at the junction of State Highway 40 and State Highway 79 at Hermosa, then northerly along State Highway 79 to its junction with State Highway 44 in Rapid City, then westerly along State Highway 44 to its junction with U.S. Highway 16 ~~the Black Hills National Forest boundary~~, then ~~westerly~~ southerly along U.S. Highway 16 ~~the Black Hills National forest boundary~~ to its junction with the South Rockerville Road, then southerly along the South Rockerville Road to its junction with State Highway 40, then easterly along State Highway 40 to its junction with State Highway 79 at Hermosa, the point of beginning.

APPROVE _____ **MODIFY** _____ **REJECT** _____ **NO ACTION** _____

RESIDENT/NONRESIDENT CRITERIA

Not applicable.

RECRUITMENT, RETENTION, REACTIVATION (R3) CRITERIA

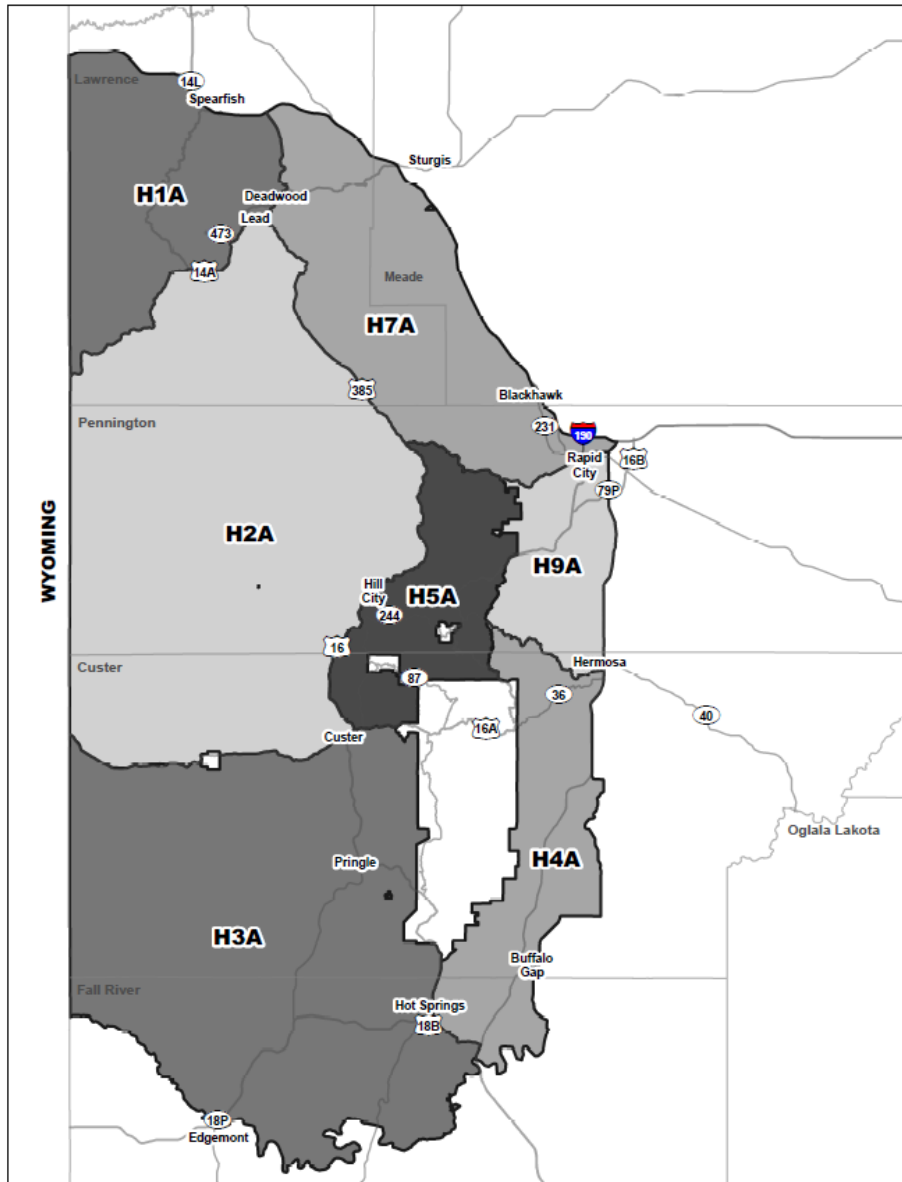
1. Does the regulation or fee inhibit a user's ability to participate? Not applicable.
2. Does the regulation increase the opportunity for new and existing users? Not applicable.
3. How does the regulation impact the next generation of hunters, anglers, trappers, and outdoor recreationists? Not applicable.
4. Does the regulation enhance the quality of life for current and future generations by getting families outdoors? Not applicable.

FISCAL IMPACT

Not applicable.

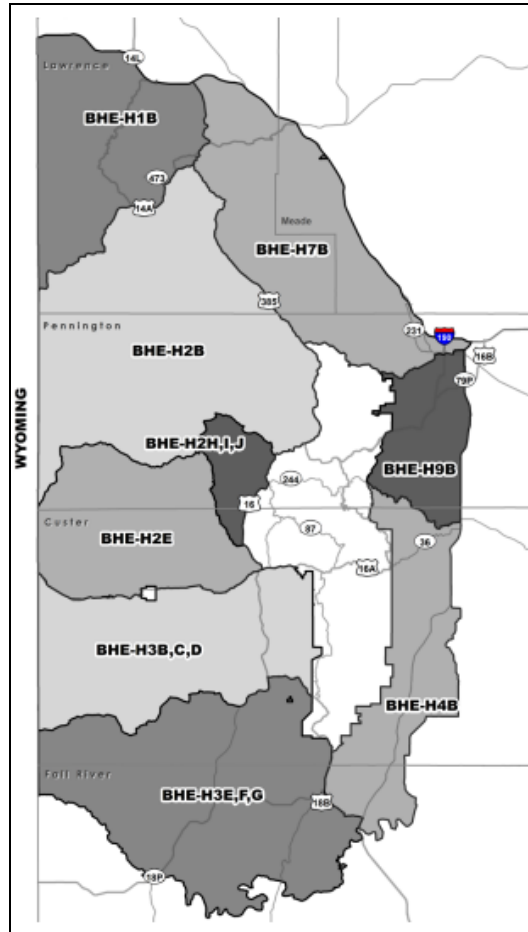
APPROVE _____ **MODIFY** _____ **REJECT** _____ **NO ACTION** _____

BLACK HILLS “ANY” ELK UNITS



2022 & 2023	
Unit	“Any” Elk
H1A	50
H2A	240
H3A	100
H4A	20
H5A	5
H7A	20
H9A	15
Total	450

BLACK HILLS “ANTLERLESS” ELK UNITS



2022 & 2023	
Unit	"Antlerless" Elk Licenses
H1B	15
H2B	15
H2C	10
H2D	0
H2E	25
H2F	25
H2G	0
H2H	5
H2I	15
H2J	15
H3B	30
H3C	30
H3D	30
H3E	60
H3F	60
H3G	60
H4B	40
H7B	15
H9B	20
Total	470

GAME, FISH, AND PARKS COMMISSION ACTION PROPOSAL

Custer State Park Elk Hunting Season (Any Elk) Chapter 41:06:27

Commission Meeting Dates:	Proposal	January 4-5, 2022	
	Public Hearing	April 7, 2022	Pierre
	Finalization	April 7-8, 2022	Watertown
			Watertown

DEPARTMENT RECOMMENDATION

Duration of Recommendation: 2022 and 2023 hunting seasons.

Season Dates: October 1-31, 2022
October 1-31, 2023

Licenses: 9 resident "Any Elk" licenses

Requirements and Restrictions:

1. The unit is open within the boundaries of Custer State Park.
2. Harvested elk must be inspected within 24 hours.

Proposed changes from last year:

1. Adjust the total number of available licenses from 9 "any elk" licenses to no more than 15 "any elk" licenses.
2. Administrative rule clean-up for season dates.

SUPPORTIVE INFORMATION

The recommended maximum number of elk licenses will be established in administrative rule and the GFP Commission via administrative action will determine specific number of licenses by tag types and allocation amongst hunting units.

Updated population objectives and any recommended license adjustments will be shared at the March Commission meeting once preliminary harvest estimates have been obtained and population modeling exercises have been completed.

Of the nine any elk licenses issued for Custer State Park, eight will be valid specifically for Custer State Park and the ninth any elk license will be made available to a non-governmental organization as a raffle license that is valid in Custer State Park and any Black Hills elk hunting unit in which an any elk license is issued.

Year	Licenses	Applicants	Success Rate
2011	11	12,060	91%
2012	4	11,133	100%
2013	4	12,888	100%
2014	4	11,762	100%
2015	8	9,136	100%
2016	9	8,951	89%
2017	9	8,828	89%
2018	9	8,670	89%
2019	9	8,949	89%
2020	9	9,385	89%

APPROVE _____
 MODIFY _____
 REJECT _____
 NO ACTION _____

DRAFT ADMINISTRATIVE RULE CHANGES

The following are proposed draft changes that are intended to incorporate the recommended changes adopted by the Commission.

41:06:27:01. Custer State Park elk hunting season established -- Number and type of licenses -- Season dates. The Custer State Park elk hunting season is open from one-half hour before sunrise to one-half hour after sunset each day of the season and is restricted by chapter 41:06:07. No more than ~~nine~~ 15 "any elk" licenses may be issued for the Custer State Park elk hunting season. The Custer State Park elk hunting season for Unit CUE-CU1 is open October 1-31 through ~~December 31~~.

RESIDENT/NONRESIDENT CRITERIA

Not Applicable.

RECRUITMENT, RETENTION, REACTIVATION (R3) CRITERIA

Not Applicable.

FISCAL IMPACT

Not Applicable.

GAME, FISH, AND PARKS COMMISSION ACTION PROPOSAL

Custer State Park Early Archery Elk Hunting Season Chapter 41:06:28

Commission Meeting Dates:	Proposal	January 4-5, 2022	Pierre
	Public Hearing	April 7, 2022	Watertown
	Finalization	April 7-8, 2022	Watertown

DEPARTMENT RECOMMENDATION

Duration of Recommendation: 2022 and 2023 hunting seasons.

Season Dates: September 1-30, 2022
September 1-30, 2023

Licenses: 3 "Any Elk" licenses

Requirements and Restrictions:

- Harvested elk must be inspected within 24 hours.

Recommended changes from last year:

- Adjust the total number of available licenses from 3 "any elk" to no more than 10 "any elk" licenses.

SUPPORTIVE INFORMATION

The recommended maximum number of elk licenses will be established in administrative rule and the GFP Commission via administrative action will determine specific number of licenses by tag types and allocation amongst hunting units.

Updated population objectives and any recommended license adjustments will be shared at the March Commission meeting once preliminary harvest estimates have been obtained and population modeling exercises have been completed.

Year	Licensed Hunters	1st Choice Applicants	Success Rate	Elk Harvested
2011	3	2,000	33%	1 bull
2012	3	2,078	0%	0
2013	3	2,740	100%	3 bulls
2014	4	3,023	100%	4 bulls
2015	4	3,600	75%	3 bulls
2016	3	3,707	33%	1 bull
2017	3	3,704	33%	1 bull
2018	3	3,772	67%	2 bulls
2019	3	4,055	100%	3 bulls
2020	3	4,353	33%	1 bull

DRAFT ADMINISTRATIVE RULE CHANGES

APPROVE _____	MODIFY _____	REJECT _____	NO ACTION _____
----------------------	---------------------	---------------------	------------------------

The following are proposed draft changes that are intended to incorporate the recommended changes adopted by the Commission.

41:06:28:01. Custer State Park early archery elk hunting season established -- Number and type of licenses -- Season dates. The Custer State Park early archery elk hunting season is open one-half hour before sunrise to one-half hour after sunset each day and is restricted by chapter 41:06:07. No more than ~~three~~ 10 "any elk" licenses may be issued for the Custer State Park early archery elk hunting season. The Custer State Park early archery elk hunting season is open from September 1 through September 30.

RESIDENT/NONRESIDENT CRITERIA

Not Applicable.

RECRUITMENT, RETENTION, REACTIVATION (R3) CRITERIA

Not Applicable.

FISCAL IMPACT

Not Applicable.

APPROVE _____ MODIFY _____ REJECT _____ NO ACTION _____

GAME, FISH AND PARKS COMMISSION ACTION PROPOSAL

Archery Elk Hunting Season Chapter 41:06:43

Commission Meeting Dates:	Proposal	January 4-5, 2022	Pierre
	Public Hearing	April 7, 2022	Watertown
	Finalization	April 7-8, 2022	Watertown

DEPARTMENT RECOMMENDATION

Duration of Recommendation: 2022 and 2023 hunting seasons.

Season Dates: Black Hills Units: September 1-30, 2022
September 1-30, 2023

Open Area: See attached map

Licenses: 142 “any elk” and 85 “antlerless elk” licenses (total of 227 licenses)

Requirements and Restrictions:

1. No person may possess more than one (1) elk license of any type in a year.
2. No more than two persons may submit applications together.
3. Except for landowner/operator preference applicants, no person who receives a license in the first drawing for this season shall be eligible to apply for an archery elk license in first drawings for the next 9 years.
4. One-half of the licenses allocated in each unit are available for landowner/operator preference application. Only one member of each qualifying landowner/operator household may apply every year.
5. Any elk harvested must be inspected by a Conservation Officer or designee within 24 hours after kill.

Recommended changes from last year:

1. Adjust the number of licenses available from 142 “any elk” and 80 “antlerless elk” licenses (total of 222 licenses) to no more than 200 “any elk” and 100 “antlerless elk” licenses (total of 300 licenses).

SUPPORTIVE INFORMATION

The recommended maximum number of elk licenses will be established in administrative rule and the GFP Commission via administrative action will determine specific number of licenses by tag types and allocation amongst hunting units.

Updated population objectives and any recommended license adjustments will be shared at the March Commission meeting once preliminary harvest estimates have been obtained and population modeling exercises have been completed.

APPROVE _____ **MODIFY** _____ **REJECT** _____ **NO ACTION** _____

Year	Licensed	Hunter	Bulls	Cows
	Hunters	Success	Harvested	Harvested
2016	280	29%	57	25
2017	269	27%	48	23
2018	219	38%	65	19
2019	216	42%	77	14
2020	204	45%	80	12

2020	"Any Elk"					"Antlerless Elk"				
	Appl. 1st	Licensed	Harvest	Bulls	Cows	Appl. 1st	Licensed	Harvest	Bulls	Cows
Unit	Choice	Hunters	Success	Harvested	Harvested	Choice	Hunters	Success	Harvested	Harvested
H1	756	17	63%	10	1	20	8	29%	0	2
H2	4,081	80	64%	50	1	78	37	6%	0	2
H3	78	37	57%	17	1	17	19	22%	0	4
H4	NA	NA	NA	NA	NA	NA	NA	NA	NA	NA
H5	57	2	50%	1	0	NA	NA	NA	NA	NA
H7	188	9	29%	3	0	NA	NA	NA	NA	NA
H9	NA	NA	NA	NA	NA	NA	NA	NA	NA	NA

DRAFT ADMINISTRATIVE RULE CHANGES

The following are proposed draft changes that are intended to incorporate the recommended changes adopted by the Commission.

41:06:43:01. Archery elk hunting season established -- Number and type of licenses available -- Season dates. The archery elk hunting season is open from one-half hour before sunrise to one-half hour after sunset each day of the season. No more than ~~447~~ 200 "any elk" licenses and ~~70~~ 100 "antlerless elk" licenses may be issued for the archery elk hunting season. The archery elk hunting season for Units AAE-H1A, AAE-H2A, AAE-H3A, AAE-H4A, AAE-H5A, AAE-H7A, and AAE-H9A is open from September 1 through September 30.

RESIDENT/NONRESIDENT CRITERIA

Not Applicable.

RECRUITMENT, RETENTION, REACTIVATION (R3) CRITERIA

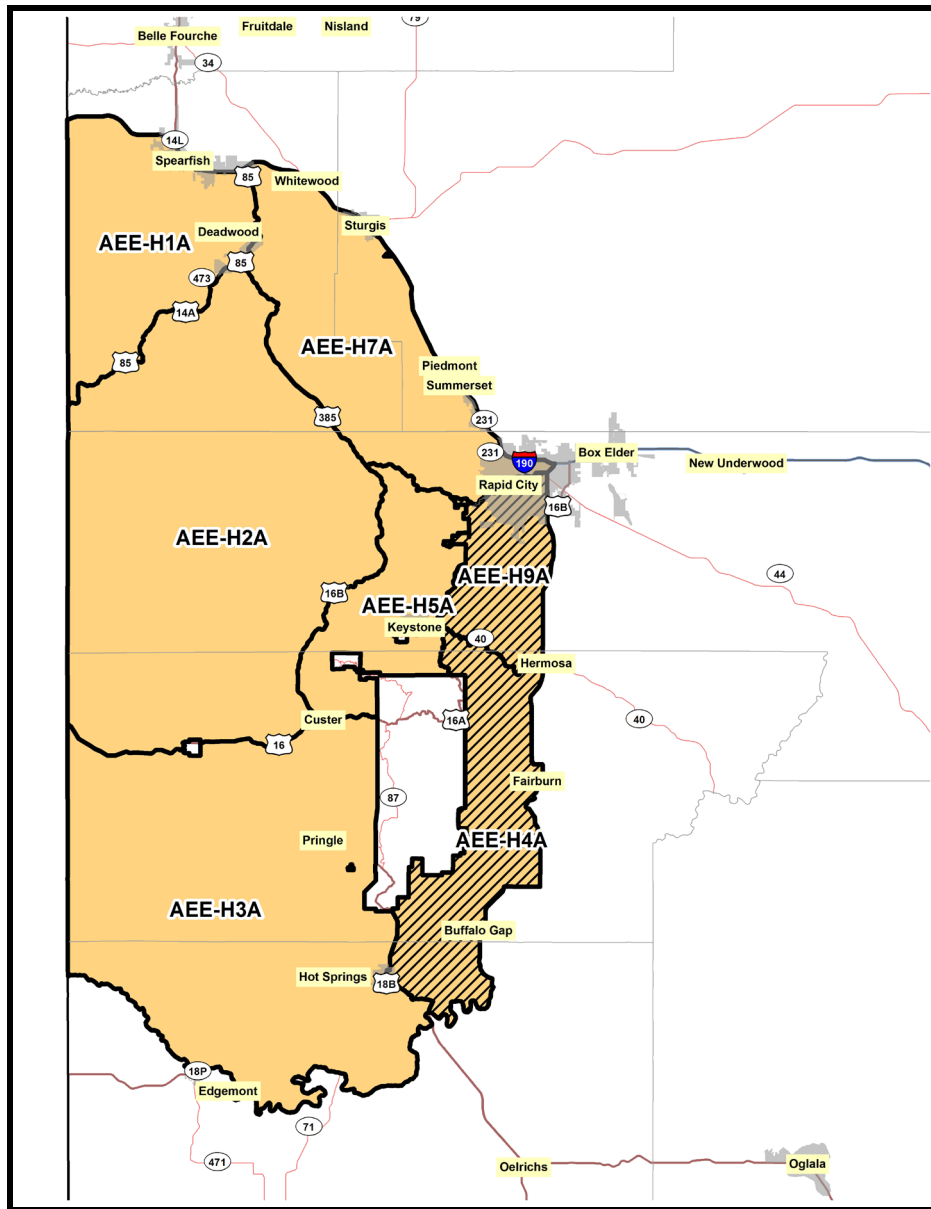
1. Does the regulation or fee inhibit a user's ability to participate? Not applicable.
2. Does the regulation increase the opportunity for new and existing users? Not applicable.
3. How does the regulation impact the next generation of hunters, anglers, trappers and outdoor recreationists? Not applicable.
4. Does the regulation enhance the quality of life for current and future generations by getting families outdoors? Not applicable.

FISCAL IMPACT

Not applicable.

APPROVE _____ MODIFY _____ REJECT _____ NO ACTION _____

BLACK HILLS ARCHERY ELK UNITS



Unit	2022 & 2023		
	"Any" Elk Tags	"Antlerless" Elk Tags	Total Tags
H1	20	15	35
H2	95	40	135
H3	25	20	45
H4	0	0	0
H5	2	0	2
H7	10	0	10
H9	0	0	0
TOTAL	152	75	227

GAME, FISH AND PARKS COMMISSION ACTION PROPOSAL

Prairie Elk Hunting Season

Chapter 41:06:59

Commission Meeting Dates:	Proposal	January 4-5, 2022	
	Public Hearing	April 7, 2022	Pierre
	Finalization	April 7-8, 2022	Watertown
			Watertown

DEPARTMENT RECOMMENDATION

Duration of Recommendation: 2022 and 2023 hunting seasons.

Season Dates:

Unit	2022 & 2023 Hunting Season Dates
9A	September 15 - October 31 AND December 1-31
11A	July 15 - August 15
11B	September 1 - October 15
11C	October 16 - November 30
11D	September 1 - October 31
11E	November 1 - December 31
11F	January 1 - February 28
15A	September 1 - October 31 AND December 1-31
15B	December 1 - January 31
27A	October 1-31 AND December 1-31
35A	September 15 - October 31 AND December 1-31
35B	September 15 - October 31 AND December 1-31
49A	September 15 - October 31 AND December 1-31
WRA	September 1 - December 31

Open Area:

Unit 09A	Portions of Butte and Lawrence counties
Unit 11A-F	Bennett County; portions of Jackson and Mellette counties
Unit 15A and B	Portions of Butte and Lawrence counties
Unit 27A	Portions of Fall River County
Unit 35A	Harding County west of US Hwy. 85
Unit 35B	Harding County east of US Hwy. 85
Unit 49A	Portions of Meade County
Unit WRA	Those portions of South Dakota west of the Missouri River not associated with another prairie elk unit, excluding Corson, Dewey, Oglala Lakota, Todd and Ziebach counties

Licenses: 82 “any elk” and 178 “antlerless elk” licenses (total of 260 licenses)

Requirements and Restrictions:

1. No person may possess more than one (1) elk license of any type in a year.
2. No more than two persons may submit applications together.
3. Except for landowner/operator preference applicants, no person who receives a license in the first drawing for this season shall be eligible to apply for a prairie elk license in first drawings for the next 9 years.
4. One-half of the licenses allocated in each unit are available for landowner/operator preference. One member of each qualifying landowner/operator household may apply every year.
5. Any elk that is harvested must be inspected by a Conservation Officer or designee within 24 hours after kill.

APPROVE _____ **MODIFY** _____ **REJECT** _____ **NO ACTION** _____

Recommended changes from last year:

1. Adjust the number of licenses available from 78 “any elk” and 178 “antlerless elk” licenses (total of 256 licenses) to no more than 100 “any elk” and 300 “antlerless elk” licenses (total of 400 licenses).
2. Modify Unit PRE-9A (see map).
3. Establish a new unit (PRE-49A) to include a portion of Meade County and season dates (see map).
4. Correct season dates in administrative rule for units PRE-11D, PRE-35A, and PRE-35B.

SUPPORTIVE INFORMATION

The recommended maximum number of elk licenses will be established in administrative rule and the GFP Commission via administrative action will determine specific number of licenses by tag types and allocation amongst hunting units.

Updated population objectives and any recommended license adjustments will be shared at the March Commission meeting once preliminary harvest estimates have been obtained and population modeling exercises have been completed.

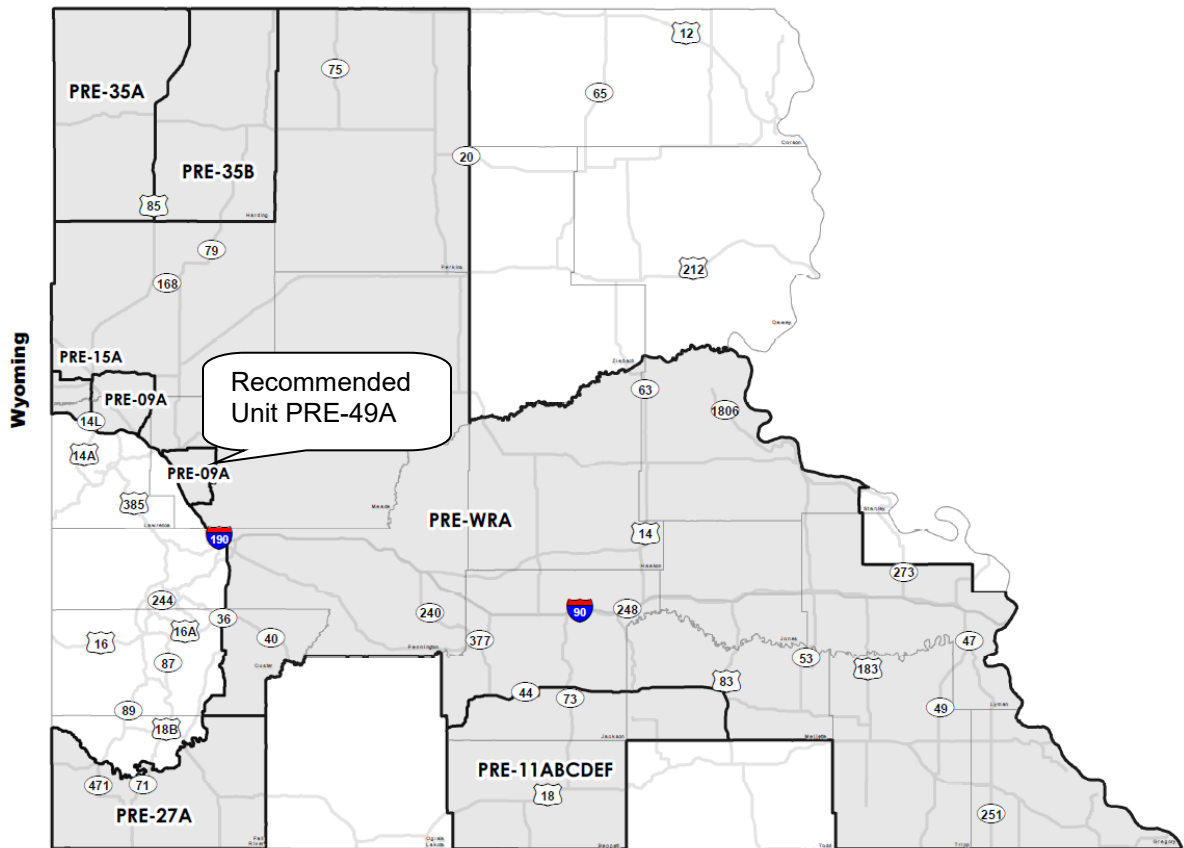
The recommended changes to prairie elk hunting unit boundaries and season date changes are to improve elk management on private land and simplify season dates.

Year	Licensed Hunters	Hunter Success	Bulls Harvested	Cows Harvested
2016	148	40%	32	27
2017	149	54%	41	39
2018	139	79%	59	51
2019	140	65%	41	50
2020	251	57%	56	87

2020 Unit	“Any Elk”				“Antlerless Elk”			
	Licensed Hunters	Harvest Success	Bulls Harvested	Cows Harvested	Licensed Hunters	Harvest Success	Bulls Harvested	Cows Harvested
09A	10	63%	6	0	15	8%	0	1
11A	NA	NA	NA	NA	16	63%	0	10
11B	16	67%	11	0	NA	NA	NA	NA
11C	16	92%	13	1	NA	NA	NA	NA
11D	NA	NA	NA	NA	30	91%	1	26
11E	NA	NA	NA	NA	30	45%	1	12
11F	NA	NA	NA	NA	30	50%	0	16
15A	8	29%	1	1	5	0%	0	0
27A	9	83%	8	0	9	67%	0	6
35A	4	100%	4	0	7	60%	0	4
35B	4	100%	4	0	12	63%	2	6
WRA	10	50%	5	0	20	13%	0	3

APPROVE _____ **MODIFY** _____ **REJECT** _____ **NO ACTION** _____

Prairie Elk Units



DRAFT ADMINISTRATIVE RULE CHANGES

41:06:59:01. Prairie elk hunting season established -- Number and type of licenses available - - Season dates. The prairie elk hunting season is open from one-half hour before sunrise to one-half hour after sunset each day of the season. No more than 78 "any elk" licenses and 178 "antlerless elk" licenses may be issued for the prairie elk hunting season. The prairie elk hunting seasons are as follows:

- (1) Unit PRE-09A is open from September 15 through October 31 and from December 1 through December 31;
- (2) Unit PRE-11A is open from July 15 through August 31;
- (3) Unit PRE-11B is open from September 1 through ~~the Friday before the third Saturday in October~~ 15;
- (4) Unit PRE-11C is open from ~~the Saturday following the second Sunday of October~~ 16 through November 30;
- (5) Unit PRE-11D is open from September 1 through ~~December~~ October 31;
- (6) Unit PRE-11E is open from November 1 through December 31;
- (7) Unit PRE-11F is open from January 1 through the last day of February;

APPROVE _____	MODIFY _____	REJECT _____	NO ACTION _____
---------------	--------------	--------------	-----------------

(8) Unit PRE-15A is open from September 1 through October 31 and from December 1 through December 31;

(9) Unit PRE-15B is open from December 1 through January 31;

(10) Unit PRE-27A is open from October 1 through October 31 and from December 1 through December 31;

(11) Unit PRE-35A is open from September 4 15 through October 31 and December 1 through December 31;

(12) Unit PRE-35B is open from September 4 15 through October 31 and December 1 through December 31; ~~and~~

(13) Unit PRE-49A is open from September 15 through October 31 and from December 1 through December 31; and

~~(13)~~ (14) Unit PRE-WRA is open from September 1 through December 31.

41:06:59:02. Open units. The following is a description of the open units for the prairie elk hunting season:

(1) Unit PRE-09A: those portions of Lawrence and Butte Counties within a line beginning at the intersection of U.S. Highways 85 and 212, then east on Highway 212 to Whitewood Valley Road, then south on Whitewood Valley Road to Interstate 90, then west on Interstate 90 to U.S. Highway 85, then north on U.S. Highway 85 to the point of beginning; ~~and that portion of Meade County within a line beginning at the junction of Interstate 90 and Elk Creek Road, then east on Elk Creek Road to Ricard Road, then north on Ricard Road to Tilford Road, then east on Tilford Road to Middle Alkali Road, then north on Middle Alkali Road to Alkali Road, then west on Alkali Road to 133rd Avenue, then south on 133rd Avenue to 206th Street, then west on 206th Street to Lazelle Street, then west on Lazelle Street to Interstate 90 then south on Interstate 90 to the point of beginning;~~

(2) Unit PRE-11A: Bennett County, the portion of Jackson County south of State Highway 44 and Bureau of Indian Affairs Highway 2, and those portions of Mellette County south of State Highway 44 and west of U.S. Highway 83;

(3) Unit PRE-11B: Bennett County, the portion of Jackson County south of State Highway 44 and Bureau of Indian Affairs Highway 2, and those portions of Mellette County south of State Highway 44 and west of U.S. Highway 83;

(4) Unit PRE-11C: Bennett County, the portion of Jackson County south of State Highway 44 and Bureau of Indian Affairs Highway 2, and those portions of Mellette County south of State Highway 44 and west of U.S. Highway 83;

(5) Unit PRE-11D: Bennett County, the portion of Jackson County south of State Highway 44 and Bureau of Indian Affairs Highway 2, and those portions of Mellette County south of State Highway 44 and west of U.S. Highway 83;

(6) Unit PRE-11E: Bennett County, the portion of Jackson County south of State Highway 44 and Bureau of Indian Affairs Highway 2, and those portions of Mellette County south of State Highway 44 and west of U.S. Highway 83;

(7) Unit PRE-11F: Bennett County, the portion of Jackson County south of State Highway 44 and Bureau of Indian Affairs Highway 2, and those portions of Mellette County south of State Highway 44 and west of U.S. Highway 83;

APPROVE _____	MODIFY _____	REJECT _____	NO ACTION _____
---------------	--------------	--------------	-----------------

(8) Unit PRE-15A: the portion of Butte County beginning at the junction of the South Dakota-Wyoming border, east on Sourdough Road to U.S. Highway 85, then south on U.S. Highway 85 to Interstate 90, then west on Interstate 90 to the South Dakota-Wyoming border, then north to the point of beginning;

(9) Unit PRE-15B: the portion of Butte County beginning at the junction of the South Dakota-Wyoming border, east on Sourdough Road to U.S. Highway 85, then south on U.S. Highway 85 to Interstate 90, then west on Interstate 90 to the South Dakota-Wyoming border, then north to the point of beginning;

(10) Unit PRE-27A: the portion of Fall River County not included in BHE-H3;

(11) Unit PRE-35A: the portion of Harding County west of U.S. Highway 85;

(12) Unit PRE-35B: the portion of Harding County east of U.S. Highway 85; and

(13) Unit PRE-49A: the portion of Meade County within a line beginning at the junction of Interstate 90 and Elk Creek Road, then east on Elk Creek Road to Ricard Road, then north on Ricard Road to Tilford Road, then east on Tilford Road to Middle Alkalai Road, then north on Middle Alkalai Road to Alkalai Road, then west on Alkalai Road 133rd Avenue, then south on 133rd Avenue to 206th Street, then west on 206th Street to Lazelle Street to Interstate 90 then south on Interstate 90 to the point of beginning; and

~~(13~~ 14) Unit PRE-WRA: the portion of the state west of the Missouri River not associated with another prairie elk unit, excluding the Lower Brule Indian Reservation and Corson, Dewey, Oglala Lakota, Todd, and Ziebach counties.

RESIDENT/NONRESIDENT CRITERIA

Not Applicable.

RECRUITMENT, RETENTION, REACTIVATION (R3) CRITERIA

1. Does the regulation or fee inhibit a user's ability to participate? No. The Department is recommending changes to prairie elk hunting unit boundaries and season dates to improve elk management on private land and simplify season dates.
2. Does the regulation increase the opportunity for new and existing users?
 - The proposed changes to license allocation would slightly increase elk hunting opportunities.
3. How does the regulation impact the next generation of hunters, anglers, trappers and outdoor recreationists? Increases opportunity for elk hunting in western South Dakota and simplifies prairie elk hunting units.
4. Does the regulation enhance the quality of life for current and future generations by getting families outdoors? Increases opportunity for elk hunting in western South Dakota.

FISCAL IMPACT

Minimal increase in license sales revenue.

APPROVE _____ MODIFY _____ REJECT _____ NO ACTION _____

GAME, FISH AND PARKS COMMISSION ADMINISTRATIVE ACTION

Elk Hunting Seasons – Hunting Unit License Allocations

Commission Meeting Dates:	Proposal	January 4-5, 2022	Pierre
	Public Hearing	April 7, 2022	Watertown
	Finalization	April 7-8, 2022	Watertown

LICENSE ALLOCATION BY SEASONS AND UNITS

See Attached Spreadsheet

2022-2023 Elk Hunting Seasons

2021			
Black Hills Elk			
Unit	Resident Licenses		
	Any Elk 21	Atl Elk 23	
H1A	50		
H1B		15	
H2A	240		
H2B		25	
H2C			
H2D			
H2E		50	
H2F			
H2G			
H2H		5	
H2I		15	
H2J		15	
H3A	100		
H3B		30	
H3C		30	
H3D		30	
H3E		60	
H3F		60	
H3G		60	
H4A	20		
H4B		40	
H5A	5		
H7A	20		
H7B		15	
H9A	15		
H9B		40	
TOTAL	450	490	940
Contingency	NA	98	98

2022-2023			
Black Hills Elk			
Unit	Resident Licenses		
	Any Elk 21	Atl Elk 23	
H1A	50		
H1B		15	
H2A	240		
H2B		25	
H2C			
H2D			
H2E		50	
H2F			
H2G			
H2H		5	
H2I		15	
H2J		15	
H3A	100		
H3B		30	
H3C		30	
H3D		30	
H3E		60	
H3F		60	
H3G		60	
H4A	20		
H4B		40	
H5A	5		
H7A	20		
H7B		15	
H9A	15		
H9B		40	
TOTAL	450	490	940
Contingency	NA	98	98

Archery Elk			
Unit	Resident Licenses		
	Any Elk 21	Atl Elk 23	
H1A	20	10	
H2A	80	40	
H3A	35	20	
H4A			
H5A	2		
H7A	10		
H9A			
TOTAL	147	70	217

Archery Elk			
Unit	Resident Licenses		
	Any Elk 21	Atl Elk 23	
H1A	20	10	
H2A	80	40	
H3A	35	20	
H4A			
H5A	2		
H7A	10		
H9A			
TOTAL	147	70	217

Prairie Elk			
Unit	Resident Licenses		
	Any Elk 21	Atl Elk 23	
9A	10	15	
11A		18	
11B	16		
11C	16		
11D		30	
11E		30	
11F		30	
15A	8		
15B		5	
27A	10	10	
35A	4	8	
35B	4	12	
49A			
WRA	10	20	
TOTAL	78	178	256

Prairie Elk			
Unit	Resident Licenses		
	Any Elk 21	Atl Elk 23	
9A	4		
11A		18	
11B	16		
11C	16		
11D		30	
11E		30	
11F		30	
15A	8		
15B		5	
27A	10	10	
35A	4	8	
35B	4	12	
49A	10	15	
WRA	10	20	
TOTAL	82	178	260

Custer State Park			
Season	Resident Licenses		
	Any Elk 21	Atl Elk 23	
CEE-CU1	3		
CUE-CU1	9		
TOTAL	12		12

Custer State Park			
Season	Resident Licenses		
	Any Elk 21	Atl Elk 23	
CEE-CU1	3		
CUE-CU1	9		
TOTAL	12		12

GAME, FISH AND PARKS COMMISSION ACTION PROPOSAL

Bighorn Sheep Hunting Season

Chapters 41:06:01; 41:06:07; and 41:06:56

Commission Meeting Dates:	Proposal	January 4-5, 2022	Pierre
	Public Hearing	March 3, 2022	Pierre
	Finalization	March 3-4, 2022	Pierre

DEPARTMENT RECOMMENATION

Duration of Recommendation: 2022 and 2023 hunting seasons

Season Dates: September 1 – December 31, 2022
September 1 – December 31, 2023

Open Area: Units 2, 4, and Custer State Park. See unit map for boundaries.

Licenses: 11 “ram bighorn sheep” licenses.

One of the licenses shall be an auction “ram bighorn sheep” license if a minimum of three total bighorn sheep licenses are allocated.

Requirements and Restrictions:

1. Except for the auction license, application for a license may be made by any resident hunter who has not been previously issued a bighorn sheep license in South Dakota.
2. Landowner - operator preference is not applicable to these licenses.
3. All licensees are required to attend an orientation meeting prior to the first day of hunting by the license holder at the regional office in Rapid City.
4. One bighorn sheep license shall be allocated as an auction license if a minimum of three bighorn licenses are approved by the Commission. The Commission shall determine in which unit or units the auction license is valid.
5. All successful hunters must submit their bighorn sheep to a conservation officer or Department representative for inspection and permanent marking within 24 hours after the kill.

Recommended changes from last year:

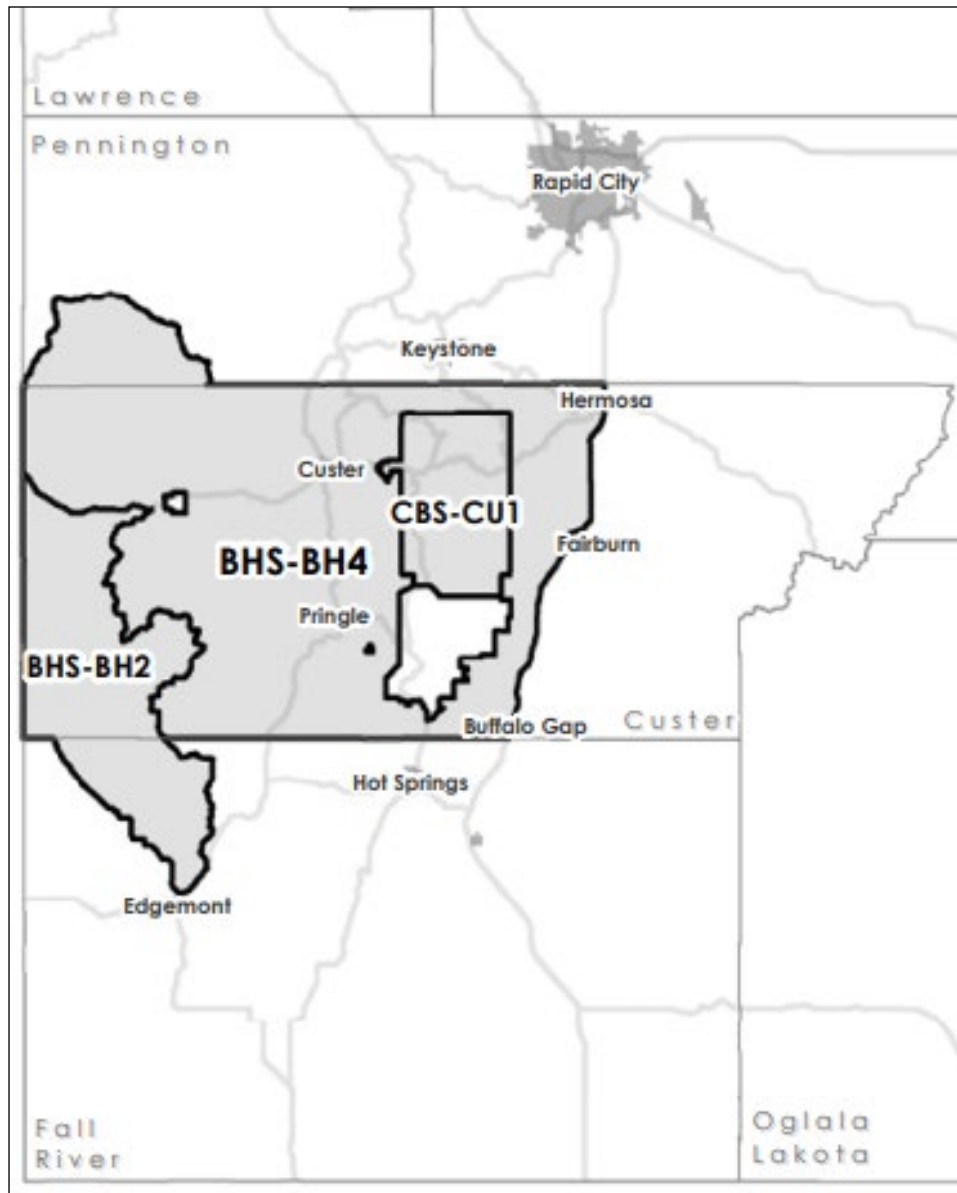
1. Increase the number of “ram bighorn sheep” licenses from 8 to 11.
2. Change the mandatory orientation meeting from “preceding the opening day of the season” to “preceding the first day of hunting by the license holder”.

Allocation of Licenses by Unit

Unit	2020-21 Licenses	2022-23 Licenses
1	0	0
2	3	3
3	1	0
4	2	4
CSP	1	3

APPROVE _____ **MODIFY** _____ **REJECT** _____ **NO ACTION** _____

Recommended 2022 Hunting Units



SUPPORTIVE INFORMATION

Due to the recent *M. ovi* pneumonia outbreak in Unit 3, both the Department and Badlands National Park recommend issuing no licenses in this unit.

Based on the strong numbers of ram bighorn sheep across all age classes, the increase to the number of licenses being recommended in Custer State Park will not negatively affect the viewability of bighorn sheep for park visitors and will provide additional hunting opportunities.

Modifying the requirement for the mandatory hunter orientation will provide better customer service to those licensed hunters.

In addition to the licenses allocated by units above, the Department recommends the auction license to be valid in Units 2, 4, and Custer State Park.

APPROVE _____ MODIFY _____ REJECT _____ NO ACTION _____

DRAFT ADMINISTRATIVE RULE CHANGES

The following are proposed draft changes that are intended to incorporate the recommended changes adopted by the Commission.

41:06:56:03. Number and type of licenses. No more than ~~eight~~ 11 ram bighorn sheep licenses may be issued for the bighorn sheep hunting season. One bighorn sheep license may be issued for sale by auction pursuant to the procedures established in this chapter, valid for one ram bighorn sheep. In Unit BHS-ZZ1, no bighorn sheep licenses may be issued. However, an applicant for this unit shall accrue a preference point as provided in § 41:06:01:09.

41:06:56:05. Mandatory briefing and check-in. All licensees are required to attend an orientation meeting preceding the ~~opening day of the season~~ first day of hunting by the license holder at the regional office in Rapid City. All successful hunters must submit their bighorn sheep to a designated department representative for inspection and permanent marking within 24 hours after the kill.

RESIDENT/NONRESIDENT CRITERIA

Not applicable.

RECRUITMENT, RETENTION, REACTIVATION (R3) CRITERIA

1. Does the regulation or fee inhibit a user’s ability to participate? No.
2. Does the regulation increase the opportunity for new and existing users? Yes, by increasing the total number of bighorn sheep licenses.
3. How does the regulation impact the next generation of hunters, anglers, trappers, and outdoor recreationists? Not applicable.
4. Does the regulation enhance the quality of life for current and future generations by getting families outdoors? Not applicable.

FISCAL IMPACT

Minimal increase in license sales revenue.

APPROVE _____	MODIFY _____	REJECT _____	NO ACTION _____
---------------	--------------	--------------	-----------------

GAME, FISH AND PARKS COMMISSION ACTION PROPOSAL

Public Waters Chapter 41:04:02

Commission Meeting Dates:	Proposal	December 9-10, 2021	Brookings Pierre Pierre
	Public Hearing	March 3, 2022	
	Finalization	March 3-4, 2022	

COMMISSION PROPOSAL

Proposed changes from last year:

1. Remove no boating zones and allow for non-motorized watercraft within the Waubay National Wildlife Refuge and the Waubay State Game Bird Refuge.
2. Establish a no wake zone at a new boat ramp at Lake Poinsett State Recreation Area in Brookings County.

DEPARTMENT RECOMMENDATION

Modify the current proposal by adding the following:

1. Modify the no wake zone at the Belle Fourche Reservoir in Butte County to include all boat ramps.

SUPPORTIVE INFORMATION

GFP and the USFWS have been in collaboration to discuss ways to increase recreational opportunities, while still meeting the objectives of the refuge system. The USFWS Refuge System recently removed restrictions to increase outdoor opportunities at Waubay National Wildlife Refuge within their mission and management responsibilities. These respective administrative rules are prohibiting the USFWS from allowing these outdoor opportunities.

During the project development of the new Lake Poinsett Recreation Area east boat ramp the GFP held a public open house. During this open house residents of the South Lake Drive made a request of adding a "no wake" zone in the fronting waters of the new east boat ramp. This would give an added protection of this new ramp for loading and unloading of watercrafts. Due to the size of this new boat ramp, it will be the largest ramp on the lake serving the majority of Lake Poinsett's watercraft recreational users.

The establishment of a new boat ramp at the Belle Fourche Reservoir in Butte County warrants a modification to the current administrative rule to provide a buffer for structural and human safety concerns for all boat ramps.

DRAFT ADMINISTRATIVE RULE CHANGES

The following are proposed draft changes that are intended to incorporate the recommended changes adopted by the Commission.

41:04:02:18. Day County public water safety zones. Day County public water safety zones are as follows:

~~(3) The waters of Hillebrand's Lake are a "no boating zone";~~

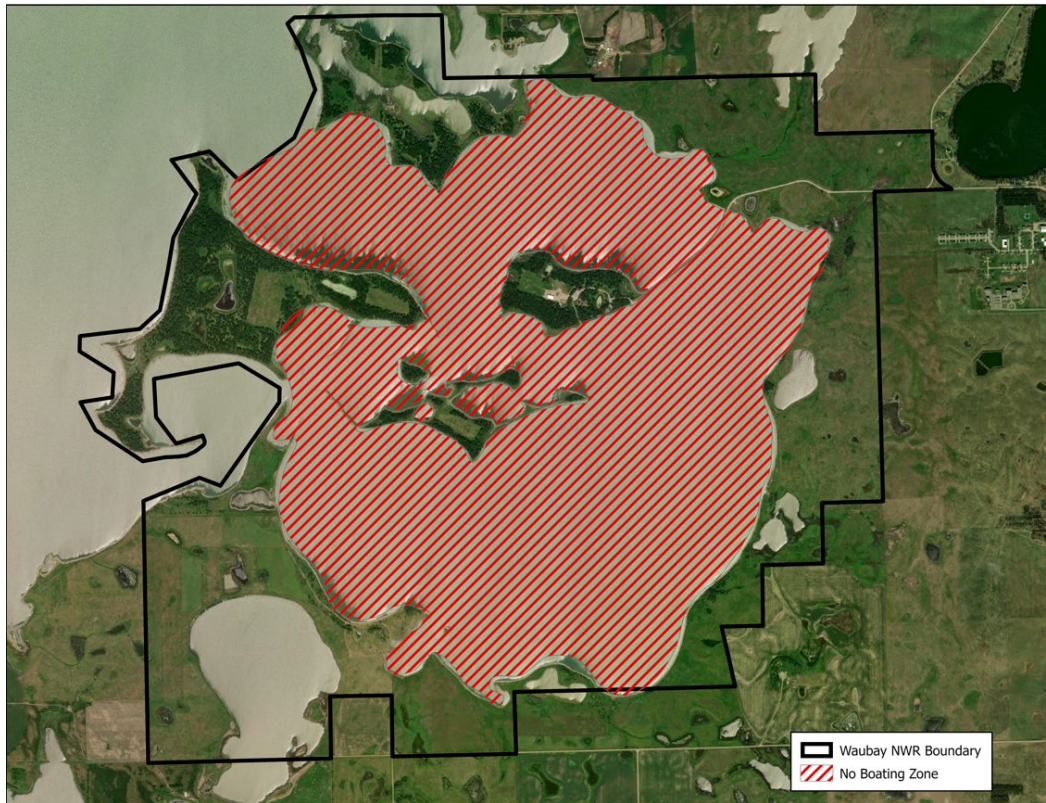
~~(4) The waters of Spring Lake are a "no boating zone";~~

~~(5) The waters of Swan Pond are a "no boating zone";~~

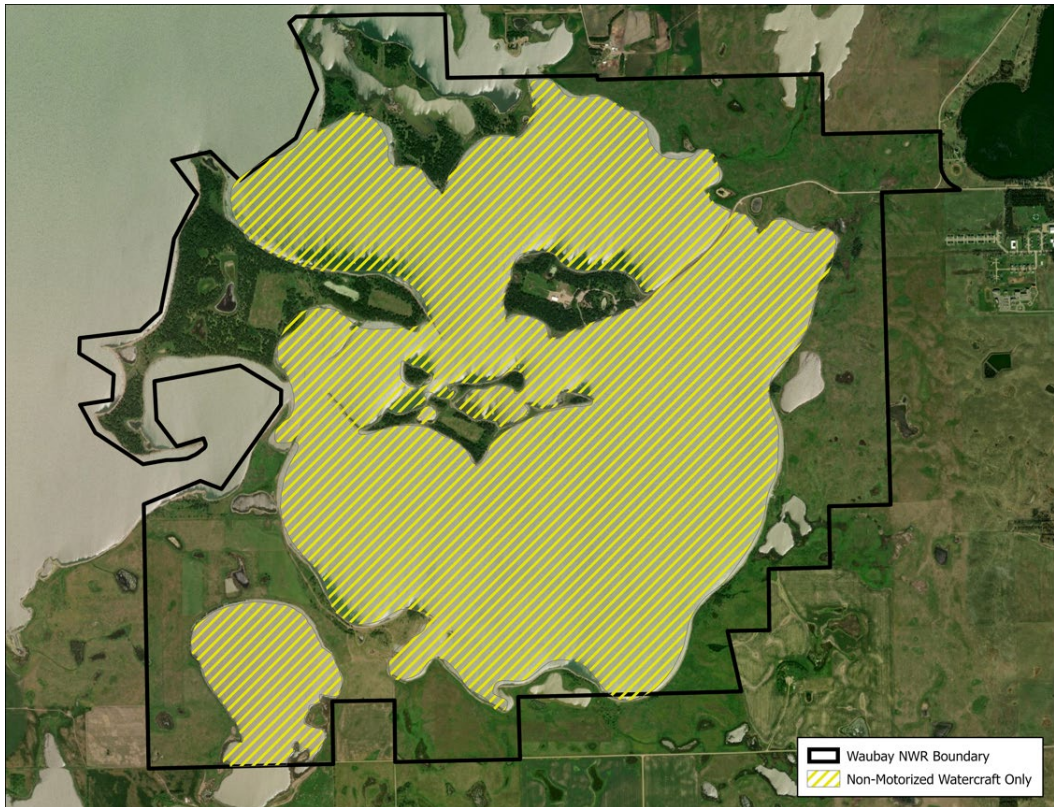
(3) The waters within the boundary of Waubay National Wildlife Refuge, including the waters within the Waubay State Game Bird Refuge, except for designated trails, are a "no motor vehicle zone"; non-motorized watercraft are allowed;

APPROVE _____ **MODIFY** _____ **REJECT** _____ **NO ACTION** _____

Waubay National Wildlife Refuge—Current



Waubay National Wildlife Refuge—Proposed



APPROVE _____ **MODIFY** _____ **REJECT** _____ **NO ACTION** _____

41:04:02:05. Brookings County public water safety zones. Brookings County public water safety zones are as follows:

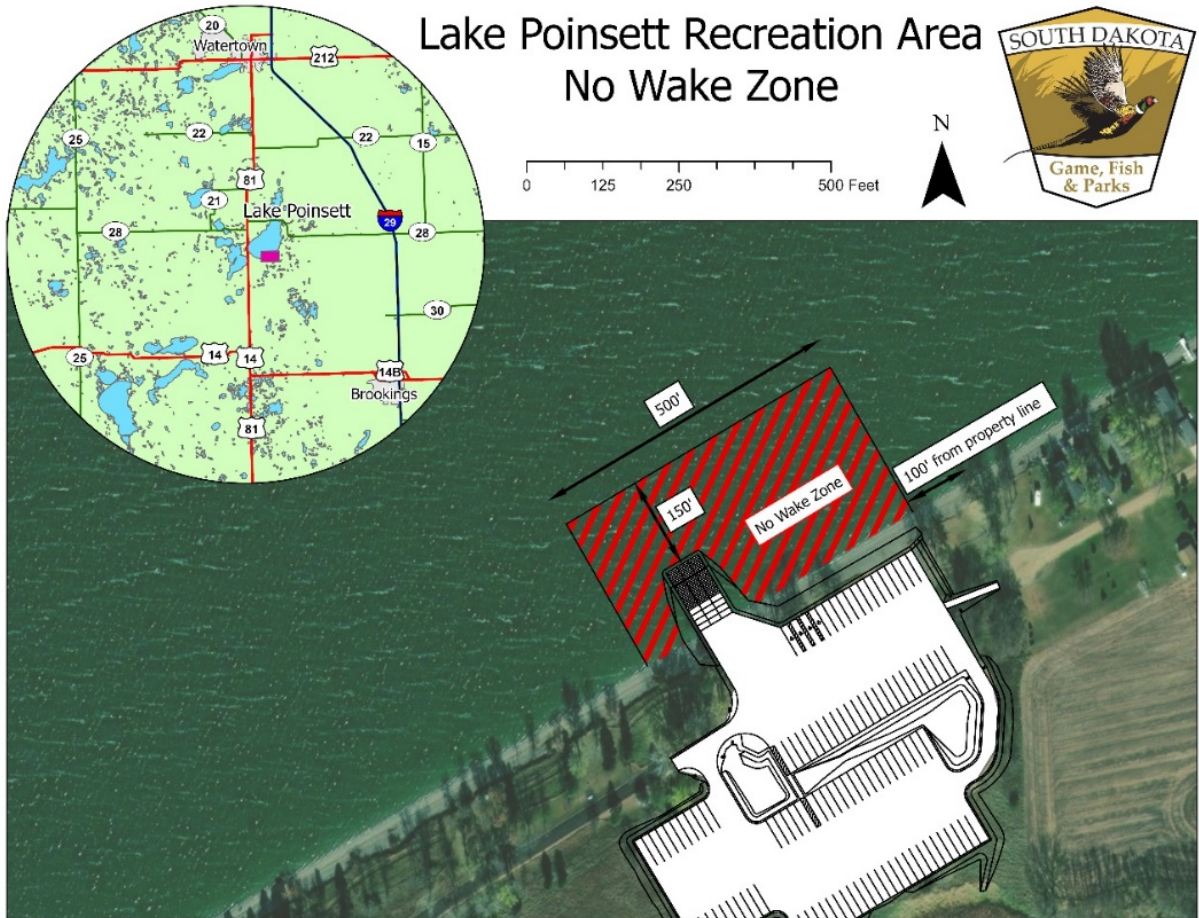
(1) Lake Poinsett:

(a) The waters fronting on that portion of the shoreline beginning approximately 1,800 feet west of the east property line marker located between sections 3 and 4 of the department public access area in the north half of section 4, township 112, range 52 west of the fifth principal meridian and extending approximately 700 feet westerly from this point are a "public swimming zone";

(b) The waters fronting on the waterfront area north of the main building of the Lake Poinsett Methodist Camp for a distance of 500 feet along the shoreline centering just north of the main building are a "public swimming zone";

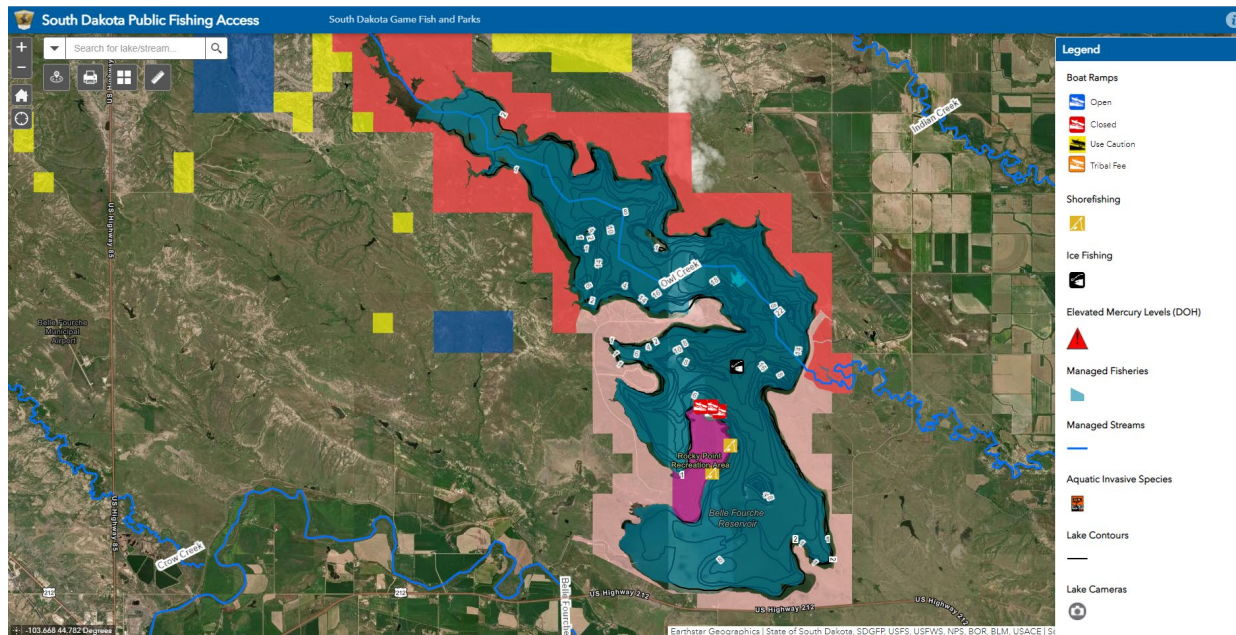
(c) The waters fronting on that portion of Lake Poinsett State Recreation Area beginning at a point 500 feet west of the west boat ramp and extending 2,150 feet west are a "no wake zone";

(d) The waters fronting on that portion of Lake Poinsett State Recreation Area beginning at a point 100 feet west of the east property boundary of the state recreation area and extending 500 feet west is a "no wake zone";



41:04:02:09. Butte County public water safety zones. Butte County public water safety zones are as follows:

- (1) The waters within a 300-foot radius of the boat ramps located in Rocky Point Recreation Area on Belle Fourche Reservoir are a "no wake zone";



RESIDENT/NONRESIDENT CRITERIA

1. The Issue
 - The USFWS Refuge System recently removed restrictions to increase outdoor opportunities within their mission and management responsibilities. These respective administrative rules are prohibiting the USFWS from allowing these outdoor opportunities.
 - Currently state law prohibits wake speed from motorized watercraft within 150 feet from docks and other requirements. The park will also move the current curtesy dock to the east side of this ramp within the offset that correlates to the parking lot. This rule will allow us to visibly mark the 150' barrier from the docks and raise boater awareness and increase safety.
2. Historical Considerations
 - Until recently, these areas within Waubay National Wildlife Refuge were closed to the above-described activities.
 - This is a new development location for the state recreation area boat launch facility.
3. Biological Considerations
 - Not applicable.
4. Social Considerations
 - The park held a public open house describing the project and details. The local homeowners requested a No Wake Zone to aid in slowing down boat traffic on their way to a busy boat launch.
5. Financial considerations
 - Not applicable.

APPROVE _____

MODIFY _____

REJECT _____

NO ACTION _____

RECRUITMENT, RETENTION, REACTIVATION (R3) CRITERIA

1. Does the regulation or fee inhibit a user's ability to participate? No.
2. Does the regulation increase the opportunity for new and existing users?
 - Yes, it provides recreational opportunities on waters within Waubay National Wildlife Refuge boundary for those using non-motorized watercraft in a new area.
 - No for changes to Lake Poinsett State Recreation Area.
3. How does the regulation impact the next generation of hunters, anglers, trappers, and outdoor recreationists?
 - Waubay National Wildlife Refuge: Provides recreational opportunities for those using non-motorized boats, canoes, and kayaks in a new area.
 - Lake Poinsett State Recreation Area: Visibly marking the 150-foot regulation will educate more recreationalists.
4. Does the regulation enhance the quality of life for current and future generations by getting families outdoors?
 - Yes. It would allow families to use non-motorized watercraft.
 - Yes. A more organized boat launch experience will promote multiple use and recreation and respect.

FISCAL IMPACT

Not applicable.

APPROVE _____ **MODIFY** _____ **REJECT** _____ **NO ACTION** _____

GAME, FISH AND PARKS COMMISSION ACTION PROPOSAL

Application for License Chapter 41:06:01

Commission Meeting Dates:	Proposal	January 4-5, 2022	Pierre
	Public Hearing	April 7, 2022	Watertown
	Finalization	April 7-8, 2022	Watertown

DEPARTMENT RECOMMENATION

Recommended changes from last year:

1. Establish landowner own land licenses valid for antlerless elk only in certain elk hunting units during the Black Hills and Prairie firearm elk hunting seasons.

SUPPORTIVE INFORMATION

The recommendation is based on Department staff discussions with the elk stakeholder group during the recent revision of the elk action plan to help address the management of elk on private land where the population objective is to decrease elk numbers slightly or substantially in a hunting unit.

DRAFT ADMINISTRATIVE RULE CHANGES

The following are proposed draft changes that are intended to incorporate the recommended changes adopted by the Commission.

41:06:01:07.03. Landowner own land license types. For the West River, East River, and Black Hills firearm deer hunting seasons, a qualifying landowner or owner-operator may purchase one "any deer" license or one two-tag "any deer" and "any antlerless deer" license. For the antelope firearm hunting season, a qualifying landowner or owner-operator may purchase one "any antelope" license or one two-tag "any antelope" and "any doe-fawn antelope" license.

For the Black Hills and Prairie firearm elk hunting seasons, a qualifying landowner or owner-operator may purchase one "antlerless elk" license when the following requirements and restrictions apply:

- (1) Applicant must own or operate a minimum of 240 acres of private land within one or more designated elk hunting unit that comprise a respective elk hunting season to qualify.
- (2) Applicants are limited to one antlerless elk license per year and may only hunt on those private lands owned and operated for agricultural purposes within the designated elk hunting units.
- (3) The fee for the landowner own land elk license is one-half the price of an antlerless elk license.
- (4) Landowner own land elk licenses are only valid for use in elk hunting units where the Department has determined the elk population objective as "slightly decrease" or "substantially decrease".
- (5) Season dates for this license type will follow the regular season dates for the respective elk hunting season and unit. Landowner own land elk licenses are valid in any open elk hunting season.
- (6) The landowner-operator or any "immediate family" living at home are eligible to apply for the landowner own land license.
- (7) Only one qualifying applicant per ranch unit per year may apply for a landowner own land license.

APPROVE _____	MODIFY _____	REJECT _____	NO ACTION _____
----------------------	---------------------	---------------------	------------------------

- (8) If a qualifying landowner-operator is successful in the landowner preference draw, that ranch unit is not eligible for a landowner own land license.

RESIDENT/NONRESIDENT CRITERIA

Not applicable.

RECRUITMENT, RETENTION, REACTIVATION (R3) CRITERIA

1. Does the regulation or fee inhibit a user's ability to participate? No.
2. Does the regulation increase the opportunity for new and existing users? Yes.
3. How does the regulation impact the next generation of hunters, anglers, trappers and outdoor recreationists? Provides additional elk hunting opportunity on private land only to those landowner/operators that meet eligibility requirements.
4. Does the regulation enhance the quality of life for current and future generations by getting families outdoors? Yes.

FISCAL IMPACT

Minimal increase in license sales revenue.

APPROVE _____ **MODIFY** _____ **REJECT** _____ **NO ACTION** _____

**GAME, FISH AND PARKS COMMISSION ACTION
PROPOSAL**

Camping Reservations – Cancellation fees

Chapters 41:03:04:05:01

Commission Meeting Dates:	Proposal	November 4, 2021	Pierre
	Public Hearing	March 3, 2021	Pierre
	Finalization	March 3-4, 2021	Pierre

DEPARTMENT RECOMMENDATION

The proposed change allows for cancellation of campsites and lodging facilities without fee for a period of time after a reservation is made. After that period has elapsed, a fee of one-half of the first night's camping or lodging fees will be assessed for both types of overnight use.

This rule proposal helps simplify cancellation policies and associated fees by providing one cancellation procedure for campsites, and one for lodging facilities and Custer State Park French Creek Horse Camp.

SUPPORTIVE INFORMATION

The Department's cancellation policy was developed at a time of lower demand for camping and lodging facilities, and the ability to resell those facilities was more difficult. The current procedure is to assess a cancellation fee of one-night's camping or \$25 for cabins/lodges effective immediately after the reservation is made.

With the increased demand for camping and lodging facilities, the ability to fill those vacancies left by cancellations is much more likely. This change will also help the Department be more consistent with industry cancellation standards, and allow more flexibility of users to cancel a reservation without penalty due to unforeseen circumstances.

DRAFT ADMINISTRATIVE RULE CHANGES

41:03:04:05.01. Campsite reservations -- Payment of camping fees -- Cancellation

fees. Nonprofit youth groups may reserve a designated group camping area for up to 14 consecutive nights.

A person may reserve an available campsite at any state park, recreation area, or lakeside use area for up to 14 consecutive nights. After the person has occupied the campsite for 14 consecutive nights, the person shall remove the person's camper unit from the state park, recreational area, or lake side use area, by check-out time the next day, for at least one night, before reserving that site, or another site, at that location.

Camping fees set in subdivisions 41:03:04:03(1) through (3), (7) through (13), and (15) must be paid for the entire duration of a camper's anticipated stay at the time the reservation is made. A person who cancels a reservation for a campsite through the park reservation center or who cancels a reservation for a campsite ~~after~~ within 7 days of or after arrival at the park shall pay one-half of one night's camping fee for each campsite reserved. A person who cancels a reservation for a camping cabin, ~~modern cabin, lodge, suite, or rent-a-camper, or a campsite at French Creek Horse Camp in Custer State Park~~ through the park reservation center within 30 days of or after arrival at the park shall pay a \$25 cancellation fee of one-half of one night's rental or camping fee. ~~A person who cancels or shortens a reservation for a lodge more than 30 days ahead of the scheduled arrival date shall be charged a \$25 cancellation fee. A person who cancels or shortens a reservation for a lodge 30 days or fewer ahead of the scheduled arrival date shall be charged a \$25 cancellation fee for every night cancelled.~~ The department shall refund all other fees for unused days of camping or unused lodging fees except nonrefundable reservation fees.

GAME, FISH AND PARKS COMMISSION ACTION PROPOSAL

A person who is a resident of this state shall pay an additional reservation fee of \$2 for a reservation made through the park reservation center. A person who is not a resident of this state shall pay an additional reservation fee of \$7.70 for a reservation made online and shall pay \$9.70 for a reservation made through the park reservation center. The reservation fee is nonrefundable and is payable in advance.

~~At French Creek Horse Camp in Custer State Park, a person who cancels a reservation through the park reservation center shall pay one night's camping fee for each campsite reserved if the cancellation is received 30 days or more before arrival. Fifty percent of the fees shall be refunded if the cancellation is received fewer than 30 days but more than 15 days before arrival, and no refunds if the cancellation is received 15 or fewer days before arrival.~~

Source: 6 SDR 96, effective April 1, 1980; 10 SDR 76, 10 SDR 102, effective July 1, 1984; 10 SDR 120, effective July 1, 1984; 12 SDR 186, effective May 28, 1986; 13 SDR 192, effective June 22, 1987; 14 SDR 114, effective March 9, 1988; 15 SDR 139, effective March 20, 1989; 16 SDR 135, effective February 18, 1990; 17 SDR 78, effective December 10, 1990; 19 SDR 82, effective December 7, 1992; 21 SDR 102, effective December 8, 1994; 21 SDR 148, effective March 6, 1995; 22 SDR 82, effective December 10, 1995; 23 SDR 87, effective December 3, 1996; 25 SDR 108, effective February 28, 1999; 28 SDR 150, effective May 7, 2002; 32 SDR 109, effective December 27, 2005; 35 SDR 184, effective February 2, 2009; 42 SDR 97, effective January 5, 2016; 43 SDR 31, effective September 14, 2016; 46 SDR 74, effective December 2, 2019.

General Authority: SDCL [41-17-1.1\(1\)\(7\)](#).

Law Implemented: SDCL [41-2-24](#), [41-17-1.1\(1\)\(7\)](#).

RESIDENT/NONRESIDENT CRITERIA

1. The Issue
 - Why make the change, what are the change alternatives, how will public/stakeholder input be solicited, and how will the change be evaluated if implemented? The Department heard many complaints about the cancellation procedure, especially during periods of high COVID transmission. This change will affect residents and non-residents equally. However, the non-refundable non-resident reservation fee and call center fees will still apply.
2. Historical Considerations
 - Not applicable
3. Biological Considerations
 - Not applicable.
4. Social Considerations
 - Not applicable.
5. Financial considerations
 - Not applicable.

RECRUITMENT, RETENTION, REACTIVATION (R3) CRITERIA

1. Does the regulation or fee inhibit a user's ability to participate? No.
2. Does the regulation increase the opportunity for new and existing users? Yes. It lowers the amount of risk for users to book a campsite for a lodging facility according to the 90-day window.

GAME, FISH AND PARKS COMMISSION ACTION PROPOSAL

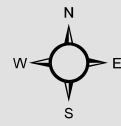
3. How does the regulation impact the next generation of hunters, anglers, trappers, and outdoor recreationists? It provides more flexibility for people that experience more uncertainty in their schedule.
4. Does the regulation enhance the quality of life for current and future generations by getting families outdoors? Yes.


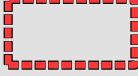
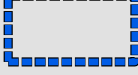
FISCAL IMPACT

The Department assessed \$249,648 of cancellation fees in 2020, and \$189,678 in 2019. Factors that will affect the impact of this change also include the ability to re-book campsites for alternate dates. It is expected that this greater flexibility to make a cancellation will provide more opportunities to book lodging at other times. This proposal will also help the Department to retain customers by providing better service.

APPROVE **MODIFY** **REJECT** **NO ACTION**

Lake Vermillion Reservoir Area



-  Current Classification Boundary Line
-  Proposed Revised RA Boundary
-  Proposed Revised LUA Boundary



Division of Parks and Recreation					
Dec Revenue by Item					
	2020		2021		%
	Number	Dollar	Number	Dollar	Change
Annual	1,111	\$ 40,000	793	\$ 28,558	-29%
2nd Annual	130	\$ 2,340	83	\$ 1,494	-36%
Combo	1,793	\$ 96,840	1,380	\$ 74,538	-23%
Transferable	126	\$ 10,080	89	\$ 7,120	-29%
Daily License	1,073	\$ 8,585	759	\$ 6,073	-29%
Unattended Vehicle Daily	160	\$ 2,395	22	\$ 335	-86%
GSM Annual Trail Pass	172	\$ 2,580	142	\$ 2,130	-17%
GSM Daily Trail Pass	122	\$ 488	104	\$ 416	-15%
Motorcoach Permit	1,269	\$ 3,807	6	\$ 18	-100%
CSP 7 Day Pass	1,144	\$ 22,881	1,213	\$ 24,260	6%
CSP 7 Day Bike Pass	-	\$ -	5	\$ 108	
Rally Bike Band	-				
One-Day Special Event		\$ -	0	\$ -	
PERMITS	7,100	\$ 189,996	4,597	\$ 145,050	-24%
Camping Services		\$ 157,115		\$ 163,274	4%
Picnic Reservations		\$ 120		\$ 40	-67%
Firewood	324	\$ 1,946	16	\$ 96	-95%
Gift Card		\$ 27,235		\$ 16,713	-39%
Boat Slips		\$ -		\$ 30	
LODGING	324	\$ 186,416	16	\$ 180,154	-3%
TOTAL	7,425	\$ 376,412	4,613	\$ 325,204	-14%

Division of Parks and Recreation					
December YTD 2021 Revenue by Item					
	2020		2021		%
	Number	Dollar	Number	Dollar	Change
Annual	66,186	\$ 2,382,705	64,694	\$ 2,328,980	-2%
2nd Annual	12,567	\$ 226,206	11,831	\$ 212,958	-6%
Combo	35,242	\$ 1,903,052	38,283	\$ 2,067,281	9%
Transferable	2,108	\$ 168,601	2,558	\$ 204,614	21%
Daily License	135,487	\$ 1,083,892	118,373	\$ 946,987	-13%
Unattended Vehicle Daily	2,741	\$ 41,110	1,943	\$ 29,150	-29%
GSM Annual Trail Pass	6,383	\$ 95,745	7,262	\$ 108,930	14%
GSM Daily Trail Pass	16,564	\$ 66,256	19,848	\$ 79,392	20%
Motorcoach Permit	7,673	\$ 23,019	25,679	\$ 77,037	235%
CSP 7 Day Pass	186,902	\$ 3,738,038	234,509	\$ 4,690,177	25%
CSP 7 Day Bike Band	19,319	\$ 386,375	22,256	\$ 445,118	15%
Rally Bike Band	29,638	\$ 592,752	31,760	\$ 635,200	7%
One-Day Special Event		\$ 7,338		\$ 13,920	90%
PERMITS	520,808	\$ 10,715,089	578,996	\$ 11,839,743	10%
Camping Services		\$ 12,737,427		\$ 13,603,902	7%
Picnic Reservations		\$ 10,010		\$ 15,422	54%
Firewood	54,843	\$ 329,059	43,695	\$ 262,172	-20%
Gift Card		\$ 41,898		\$ 30,533	-27%
Boat Slips		\$ 145,035		\$ 216,703	49%
LODGING	54,843	\$ 13,263,429	43,695	\$ 14,128,732	7%
TOTAL	575,651	\$ 23,978,518	622,691	\$ 25,968,476	8%

Division of Parks and Recreation
December YTD 2021 Camping by District

<i>LOCATION</i>	<i>2020</i>	<i>2021</i>	<i>%</i>	<i>LOCATION</i>	<i>2020</i>	<i>2021</i>	<i>%</i>
Pickerel Lake	6,053	6,009	-1%	Lewis & Clark	48,208	48,383	0%
Fort Sisseton	1,347	1,547	15%	Chief White Crane	14,512	15,135	4%
Roy Lake	8,211	9,045	10%	Pierson Ranch	5,805	5,798	0%
Sica Hollow	434	316	-27%	Springfield	1,503	1,541	3%
<i>DISTRICT 1</i>	<i>16,045</i>	<i>16,917</i>	<i>5%</i>	Sand Creek	109	145	33%
Richmond Lake	1,847	1,969	7%	Tabor	41	48	17%
Mina Lake	3,450	3,780	10%	<i>DISTRICT 9</i>	<i>70,178</i>	<i>71,050</i>	<i>1%</i>
Fisher Grove	1,391	1,407	1%	North Point	11,153	10,998	-1%
Amsden	281	279	-1%	North Wheeler	927	1,036	12%
Lake Louise	2,524	2,427	-4%	Pease Creek	1,749	2,113	21%
<i>DISTRICT 2</i>	<i>9,493</i>	<i>9,862</i>	<i>4%</i>	Randall Creek	5,344	8,061	51%
Pelican Lake	6,521	7,014	8%	South Shore	697	406	-42%
Sandy Shore	1,855	1,903	3%	South Scalp	66	125	89%
Lake Cochrane	2,419	2,425	0%	Whetstone	680	550	-19%
Hartford Beach	7,584	7,100	-6%	White Swan	316	186	-41%
<i>DISTRICT 3</i>	<i>18,379</i>	<i>18,442</i>	<i>0%</i>	<i>DISTRICT 10</i>	<i>20,932</i>	<i>23,475</i>	<i>12%</i>
Oakwood Lakes	10,839	10,454	-4%	Farm Island	8,295	8,994	8%
Lake Poinsett	9,040	9,141	1%	West Bend	8,999	9,342	4%
Lake Thompson	7,526	8,265	10%	<i>DISTRICT 11</i>	<i>17,294</i>	<i>18,336</i>	<i>6%</i>
<i>DISTRICT 4</i>	<i>27,405</i>	<i>27,860</i>	<i>2%</i>	Oahe Downstream	15,122	15,830	5%
Lake Herman	5,963	6,821	14%	Cow Creek	3,691	3,944	7%
Walker's Point	3,363	3,460	3%	Okobojo	2,389	2,075	-13%
Lake Carthage	1,138	947	-17%	Spring Creek	809	1,063	31%
<i>DISTRICT 5</i>	<i>10,464</i>	<i>11,228</i>	<i>7%</i>	<i>DISTRICT 12</i>	<i>22,011</i>	<i>22,912</i>	<i>4%</i>
Snake Creek	9,756	9,488	-3%	West Whitlock	5,270	5,789	10%
Platte Creek	2,099	1,915	-9%	East Whitlock	125	91	-27%
Buryanek	2,847	2,936	3%	Swan Creek	1,038	1,001	-4%
Burke Lake	86	80	-7%	Indian Creek	8,174	8,489	4%
<i>DISTRICT 6</i>	<i>14,788</i>	<i>14,419</i>	<i>-2%</i>	Lake Hiddenwood	-	-	
Palisades	6,431	5,970	-7%	Walth Bay	48	16	-67%
Big Sioux	7,008	8,154	16%	West Pollock	1,552	1,346	-13%
Lake Vermillion	10,919	13,369	22%	<i>DISTRICT 13</i>	<i>16,207</i>	<i>16,732</i>	<i>3%</i>
<i>DISTRICT 7</i>	<i>24,358</i>	<i>27,493</i>	<i>13%</i>	Bear Butte	1,433	1,575	10%
Newton Hills	12,302	13,160	7%	<i>DISTRICT 14</i>	<i>1,433</i>	<i>1,575</i>	<i>10%</i>
Good Earth	-	-		Shadehill	7,260	7,824	8%
Union Grove	1,791	1,862	4%	Llewellyn Johns	589	651	11%
<i>DISTRICT 8</i>	<i>14,093</i>	<i>15,022</i>	<i>7%</i>	Rocky Point	7,326	7,394	1%
				<i>DISTRICT 15</i>	<i>15,175</i>	<i>15,869</i>	<i>5%</i>
				Custer	58,680	59,209	1%
				<i>DISTRICT 16</i>	<i>58,680</i>	<i>59,209</i>	<i>1%</i>
				Angostura	21,415	21,855	2%
				Sheps Canyon	2,376	2,458	3%
				<i>DISTRICT 17</i>	<i>23,791</i>	<i>24,313</i>	<i>2%</i>
				<i>TOTAL YTD</i>	<i>380,726</i>	<i>394,714</i>	<i>4%</i>
				<i>TOTAL for Month</i>	<i>575</i>	<i>504</i>	<i>-12%</i>

Division of Parks and Recreation
December YTD 2021 Visitation by District

<i>LOCATION</i>	<i>2020</i>	<i>2021</i>	<i>%</i>	<i>LOCATION</i>	<i>2020</i>	<i>2021</i>	<i>%</i>
Pickerel Lake	53,414	50,777	-5%	Lewis & Clark	1,069,528	1,251,501	17%
Fort Sisseton	51,135	73,576	44%	Chief White Crane	58,743	54,441	-7%
Roy Lake	189,821	180,156	-5%	Pierson Ranch	88,477	90,150	2%
Sica Hollow	26,152	35,756	37%	Springfield	172,409	170,600	-1%
<i>DISTRICT 1</i>	<i>320,522</i>	<i>340,265</i>	<i>6%</i>	<i>DISTRICT 9</i>	<i>1,389,157</i>	<i>1,566,692</i>	<i>13%</i>
Richmond Lake	55,404	55,222	0%	North Point	110,070	138,065	25%
Mina Lake	58,164	48,412	-17%	North Wheeler	17,985	18,424	2%
Fisher Grove	22,250	18,062	-19%	Pease Creek	45,782	37,472	-18%
Lake Louise	39,720	33,924	-15%	Randall Creek	57,928	48,280	-17%
<i>DISTRICT 2</i>	<i>175,537</i>	<i>155,620</i>	<i>-11%</i>	Fort Randall Marina	21,381	19,687	-8%
Pelican Lake	78,448	80,863	3%	<i>DISTRICT 10</i>	<i>253,146</i>	<i>261,928</i>	<i>3%</i>
Sandy Shore	38,025	33,144	-13%	Farm Island	170,549	171,013	0%
Lake Cochrane	33,053	22,616	-32%	West Bend	47,311	47,502	0%
Hartford Beach	153,989	161,903	5%	LaFramboise Island	93,580	88,782	-5%
<i>DISTRICT 3</i>	<i>303,515</i>	<i>298,526</i>	<i>-2%</i>	<i>DISTRICT 11</i>	<i>311,440</i>	<i>307,297</i>	<i>-1%</i>
Oakwood Lakes	105,291	78,338	-26%	Oahe Downstream	392,246	326,689	-17%
Lake Poinsett	73,761	46,967	-36%	Cow Creek	235,888	248,737	5%
Lake Thompson	61,178	52,273	-15%	Okobojo	74,992	55,024	-27%
<i>DISTRICT 4</i>	<i>240,230</i>	<i>177,578</i>	<i>-26%</i>	Spring Creek	286,791	363,569	27%
Lake Herman	137,511	129,001	-6%	<i>DISTRICT 12</i>	<i>989,917</i>	<i>994,019</i>	<i>0%</i>
Walker's Point	58,298	49,927	-14%	West Whitlock	48,581	53,723	11%
<i>DISTRICT 5</i>	<i>195,809</i>	<i>178,928</i>	<i>-9%</i>	Swan Creek	22,317	22,182	-1%
Snake Creek	156,229	142,215	-9%	Indian Creek	66,619	71,755	8%
Platte Creek	172,166	139,772	-19%	Lake Hiddenwood	-	-	
Buryanek	36,072	31,940	-11%	Revheim Bay	60,845	61,746	1%
Burke Lake	19,590	20,254	3%	West Pollock	69,405	64,220	-7%
<i>DISTRICT 6</i>	<i>384,057</i>	<i>334,181</i>	<i>-13%</i>	<i>DISTRICT 13</i>	<i>267,767</i>	<i>273,626</i>	<i>2%</i>
Palisades	151,923	130,282	-14%	Bear Butte	20,037	20,638	3%
Big Sioux	71,374	70,983	-1%	<i>DISTRICT 14</i>	<i>20,037</i>	<i>20,638</i>	<i>3%</i>
Beaver Creek	27,473	26,113	-5%	Shadehill	47,112	54,821	16%
Lake Vermillion	160,286	142,211	-11%	Llewellyn Johns	5,324	5,591	5%
<i>DISTRICT 7</i>	<i>411,056</i>	<i>369,589</i>	<i>-10%</i>	Little Moreau	18,492	22,536	22%
Newton Hills	208,920	163,292	-22%	Rocky Point	101,779	90,847	-11%
Good Earth	69,543	115,126	66%	<i>DISTRICT 15</i>	<i>172,707</i>	<i>173,795</i>	<i>1%</i>
Union Grove	26,271	22,111	-16%	Custer	2,124,083	2,363,078	11%
Lake Alvin	85,271	109,443	28%	<i>DISTRICT 16</i>	<i>2,124,083</i>	<i>2,363,078</i>	<i>11%</i>
Spirit Mound	29,269	20,762	-29%	Angostura	226,694	215,233	-5%
Adams	36,840	32,291	-12%	Sheps Canyon	51,895	46,684	-10%
<i>DISTRICT 8</i>	<i>456,114</i>	<i>463,025</i>	<i>2%</i>	<i>DISTRICT 17</i>	<i>278,589</i>	<i>261,917</i>	<i>-6%</i>
				<i>TOTAL YTD</i>	<i>8,293,684</i>	<i>8,540,702</i>	<i>3%</i>
				<i>TOTAL for Month</i>	<i>223,341</i>	<i>210,630</i>	<i>-6%</i>

**GAME, FISH AND PARKS COMMISSION
ADMINISTRATIVE ACTION**

Bighorn Sheep Auction License – Area Valid

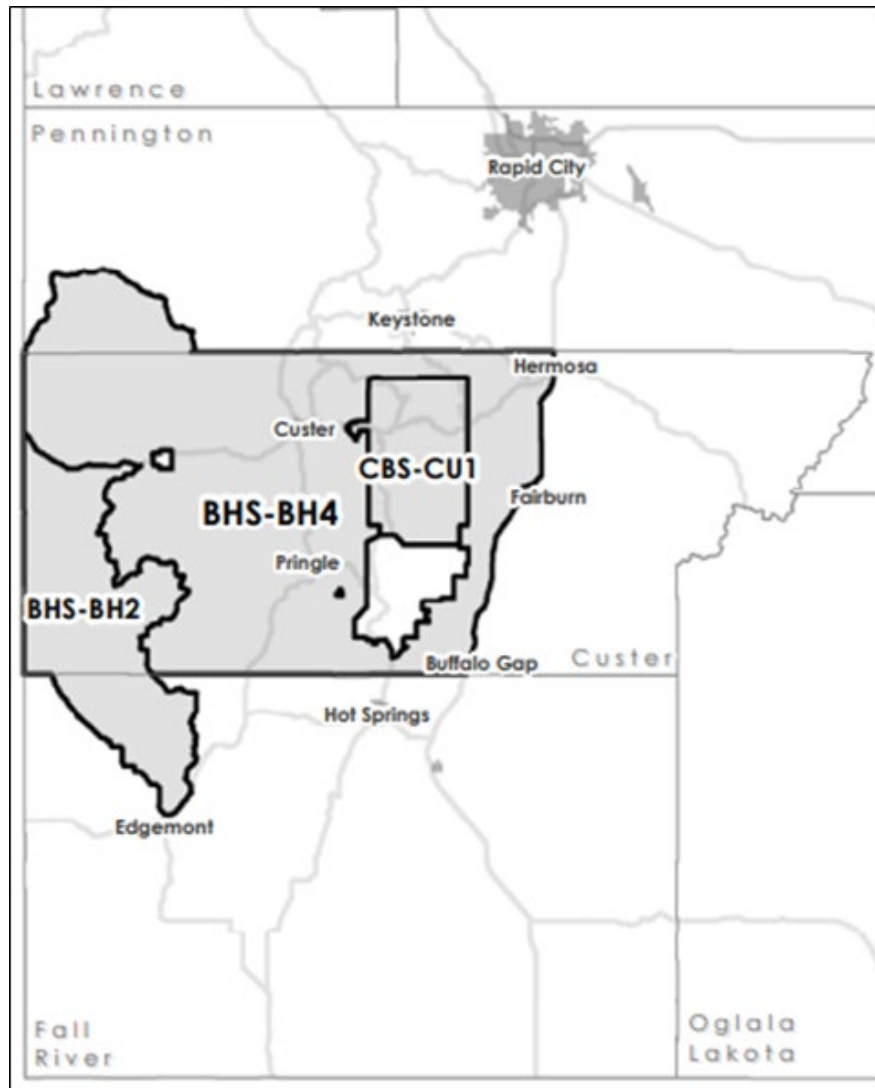
Commission Meeting Dates:	Presented	January 4-5, 2022	Pierre
	Approval Action	March 3-4, 2022	Pierre

ADMINISTRATIVE ACTION

- 1. For the 2022 bighorn sheep hunting season, include Units 2, 4, and Custer State Park to the area valid to hunt with the bighorn sheep auction license.

SUPPORTIVE INFORMATION

Based on bighorn sheep population surveys and other biological data, all hunting units that offer a bighorn sheep license for the 2022 hunting season could sustain harvest of an additional ram without any biological or wildlife viewing impact.



APPROVE _____ **MODIFY** _____ **REJECT** _____ **NO ACTION** _____