



AGENDA

Game, Fish and Parks Commission

April 7-8, 2022
Watertown Event Center
1901 9th Ave. SW - Watertown, SD

This meeting will be held in person, via zoom/conference call, and livestream. To listen to the entire meeting beginning at 1:00 p.m. via livestream at <https://www.sd.net/remoted1/> or join via zoom by clicking on the link below. Depending on the application you use you may be required to enter the meeting ID and password. Remember to **enter your display name and mute your microphone**. To help keep background noise and distractions to a minimum, make sure you **mute your microphone and turn off your video** when you are not speaking.

THURSDAY

Zoom Meeting Link <https://state-sd.zoom.us/j/97285370062?pwd=K0dRMzNVa0hjcEIBRVhSR0Q1QU52UT09>
or joint via conference call Dial 1 669 900 9128 Meeting ID: 972 8537 0062 Passcode: 943065

FRIDAY

Zoom Meeting Link <https://state-sd.zoom.us/j/95976213809?pwd=Wlh5RXNFMXdUamYvOHJUSDVnTTAyQT09>
or joint via conference call Dial 1 669 900 9128 Meeting ID: 959 7621 3809 Passcode: 527495

Public Input: To provide comments join the meeting in person, via zoom or conference call per the info above. To conduct the public hearing and/or open forum as efficiently as possible we ask those wishing to testify to **register by 1:00 pm CT the day of the meeting by email to Rachel.comes@state.sd.us**. Testifiers should provide their full names, whom they are representing, city of residence, and which proposed topic they will be addressing.

Written comments can be submitted at <https://gfp.sd.gov/forms/positions/>. To be included in the public record comments must include full name and city of residence and meet the **submission deadline of seventy-two hours before the meeting (not including the day of the meeting)**

Call to order 1:00 PM CT/ 12:00 PM CT

Division of Administration

Action Items:

1. Conflict of Interest Disclosure
2. Approve Minutes of the March 2022 Meeting

<https://gfp.sd.gov/commission/archives/>

3. Additional Commissioner Salary Days

Information Items:

4. Second Century Habitat Fund Update
5. Go Outdoors SD Update
6. Recruitment/Marketing Efforts & Park Events

Public Hearing 2:00 PM

Portion of the meeting designated for public comment on items pertaining to finalizations listed on the agenda
(Typically limited to 3 minutes per person.)

Open Forum

Portion of the meeting designated for public comment on other items of interest. (Typically limited to 3 minutes per person)

This agenda is subject to change without prior notice.

Petition

7. Apprentice and Mentored Deer Season Start Date

Finalizations

8. Elk Seasons
9. Missouri River (Pierre) Waterfowl Refuge
10. Bighorn Sheep
11. Lake Francis Case Walleye Regulations
12. Public Waters
13. License Agent Processes
14. Cancellation Policy

Proposals

15. Public Waters – Indian Springs
16. Waterfowl Seasons
17. License Forms and Fees
18. Application for License
19. Mentor Turkey Recruitment

Division of Parks and Recreation

Action Items:

20. Dock 44 – Controlling interest approval

Information Items:

21. Snowmobile Season Recap
22. Spring Creek Marina Update
23. Lake Oahe Water Levels
24. Major Parks Construction Projects for 2022
25. Camping, Visitation and Revenue Report

Division of Wildlife

Action Items:

26. Nelson-Hendrickson GPA Exchange

Information Items:

27. Highly Pathogenic Avian Influenza Update
28. Habitat Stamp Projects
29. Habitat Management on GPA's
30. Sunfish Catchability
31. License Sales Update

Solicitation of Agenda Items from Commissioners

Adjourn

Next meeting information: May 5-6, 2022 Custer State Park

**Minutes of the Game, Fish, and Parks Commission
March 3-4, 2022**

Vice Chair Doug Sharp called the meeting to order at 1:05 p.m. CT. Commissioners Travis Bies, Julie Bartling, Jon Locken, Stephanie Rissler, Doug Sharp, Charles Spring, and Robert Whitmyre were present. Public and staff were able to listen via SDPB livestream and participate via video conference or in person with approximately 70 total participants via zoom and in person.

DIVISION OF ADMINISTRATION

Conflict of Interest Disclosure

Vice chair Sharp called for conflicts of interest to be disclosed. None were presented.

Approval of Minutes

Sharp called for any additions or corrections to the January 4-5, 2022, regular meeting minutes and February 7, 2022, special meeting.

Motion by Whitmyre with second by Locken TO APPROVE THE MINUTES OF THE JANUARY 4-5, 2022, REGULAR MEETING MINUTES AND FEBRUARY 7, 2022, SPECIAL MEETING. Motion carried unanimously.

Additional Commissioner Salary Days

Sharp called for additional salary days. None were requested.

Legislative Session Summary

Secretary Robling provided an update on legislation pertaining to GFP for 2022.

Wildlife Damage Management Specialist of the Year Award

Emmett Keyser, regional supervisor presented Greg Wolbrink with the WDM Specialist of the year award.

SD Bowhunters Conservation Office of the Year Award

Tom Kirschenmann, wildlife division director, announced the Bowhunters Conservation Officer of the year.

SD Parks and Wildlife Foundation

Kristina Coby, executive director, introduced herself to the Commission and provided a brief update on current initiatives.

Go Outdoors SD Update

Keith Fisk and Ross Scott provided an update.

Fishing Marketing Plan

Nick Harrington, Communications Manager, provided an update on Fishing South Dakota. This is a department initiative to recruit, retain and reactivate resident and nonresident anglers. Shala Larson, R3 and Relevancy Coordinator, provided an update on Fishing with Your Friends, a project that will begin in 2022. This project is funded through a Recreational Boating and Fishing Foundation grant.

HuntSafe Program Update

Brandon Maas, HuntSafe Coordinator, provided an update on the HuntSAFE program. Classes are now being held in-person and online courses are now being charged. There is a HuntSAFE Conference April 22-23.

Parks Programming and Social Media

April Larson, Marketing Coordinator, presented an update on park programming and social media. The goal behind all programming and social media content is to continue to deliver excellent customer service and meet our customers where they are to continue to build outdoor families.

PETITION

Nonresident Use of Hounds for Hunting

Tom Kirschenmann, wildlife division director, presented the petition received from Joshua Didier to allow for nonresidents to use hounds to hunt racoons.

Motion by Bartling, second by Spring to deny the petition. Motion carried unanimously.

Motion by Bies, second by Bartling to adopt resolution 22-05 (appendix C) denying the petition. Motion carried unanimously.

OPEN FORUM

Jon Kotilnek, senior staff attorney, opened the floor for discussion from those in attendance on matters of importance to them that may not be on the agenda.

Missouri River Waterfowl Refuge

Larry Steffen – Pierre, SD – SD Migratory Bird Association President The recommendation is to take half of the Peoria boat ramp to the face of the dam, and it would all be public hunting.

Steve Nelson – Pierre, SD – SD Migratory Upland Bird Association Have had several meetings with organization. A goose hunter in Pierre probably hunts 10-20 days. Explained that the geese need a refuge close to water and they have been doing this with the DeGrey refuge for 45 years. This would leave 500 miles of shooting on the west side of the river from Pierre to Gettysburg and we are only asking for a 6-mile strip surrounded by public ground.

George Vandel – Pierre, SD Ducks go where they want to go and if there were ducks outside of the refuge, I would not need to make comment today. There is not 500 miles of hunting along the water. It's important to understand the existing system is due to a compromise by boat hunters and field hunters and it's a good system. It's not an easy hunt, but it's a lot of fun. Please keep these hunting options open.

Peter Koupal – Rapid City, SD Built a cabin at Peoria Flats 5 years ago to enjoy the river. Enjoys waterfowl hunting by waters edge, field, and from the boat. Public land access provides the opportunity for me to hunt. This proposal does not have any R3 (recruit, retain and reactivate)

Andy Vandel – Pierre, SD - High Plains Wildlife Association These public lands provide ample opportunity for future and past waterfowl hunters. Passionate to pass this on to the next generation. This parcel doesn't require you to register prior to hunting. These areas are close so people can easily go out in the evening after school or work. While it is close to Pierre it is the public lands that provides access that makes it ideal. There are 5 concrete boat ramps, we should create and or expand on these opportunities not remove. This proposal removes access and therefore the High Plains Wildlife Association is not in support.

Paul Lepisto – Pierre, SD – Izaak Walton League of America Request this proposal be denied as we support R3, and this expansion proposal increases the refuge by 440% and decreases access and participate. This would have major impacts for people all over South Dakota and the country. We do not support closer of public land or public water.

Derek Schiefelbein - Pierre, SD Opposes the proposal due as it will limit access and stated this is not a hunting pressure issue. Ducks provide opportunity when the geese don't leave North Dakota. Adding more refuges only allows one thing, the loss of opportunity.

Nathan Morey - Pierre, SD Outdoor opportunities have kept me in the Pierre area specifically waterfowl hunting and the late season opportunity. This refuge would take away what I look forward to every year. And for what reason, what would we gain from this? There is no reasonable data to show this would benefit the waterfowl.

Roger Hatling – Pierre, SD This area is unbelievable for duck hunting. The birds that come through here now is because of what happens in North Dakota. If you want scientific data, you can go back and see what happen at Sand Lake when all the grain was removed. The geese will be here by one reason only which is the weather in North Dakota. Can provide pictures to show the shoreline full of ducks, geese, and everything else. The geese move around a little bit, but they always come back. Every refuge is right in front of a goose camp. These areas are where the birds chose to stay.

Lance Roberts – Pierre, SD Agree with the comments against the proposal. Was in Washington State fishing and they haven't explained the refuge but alternate the days decoys can be used.

Shooting Range Land Purchase

Matt Kammerer – Rapid City, SD Spoke in opposition. Doesn't want section line moved to the south end. He listed several other reasons why he does not support the shooting range.

Chris Hesla – Pierre, SD – SDWF Opposes refuge change and agrees with comments previously made. Supports the gun range and compliments staff for their hard work thus far.

King Cavalier II – Sturgis, SD Has been working with Jim Scull for the last 14 years to find land to develop a shooting range in this state. This will not be a private business. It will allow for a safe, responsible, concerned and EPA compliant manner and it will be free to the public. In response to complaints about noise and for load out he has been a competitive shooter across the country, and this will not be an issue. Knows about ranges and promoting events and this range would be a

spectacular attraction for residents across the state. Supports this range it is the right time and the right place.

Dennis Jorgenson – Rapid City, SD spoke in support. He explained that as coach to youth sports that require dedication, hard work and attention to detail shooting sports are another way for kids to excel.

Teri Jorgenson - Rapid City, SD Supports the facility. She says safety is the number one priority and is shocked at peoples lack of shooting knowledge and not understanding this will be a safe place for shooting.

Nancy Hilding – Black Hawk, SD – Prairie Hills Audubon Society Opposed to shooting range at this location. Says safety is limited to bullets and not lead or local wildlife. Says the Commission promised to pay the foundation back a year ago.

Brian Gosch, Rapid City, SD – NRA State director for NRA. Represents 5 states spoke in support of the shooting range land purchase.

George Vandel – Pierre, SD Has experienced a great change in the Pierre shooting range and it used to be a dump. GFP built a whole new range and it's a night and day difference. It is safe, clean, and accessible. A hunter has several ethical responsibilities: safe, legal, and efficient enough to be a good shot to proficiently harvest an animal. Provide as many of these ranges as you possibly can. You will never find a spot that doesn't have some conflict, but this is the best possible location..... encourage

Petition – Use of Hounds

Julie Anderson, Rapid City, SD – Signs of Hope Opposes the next predator bounty program and petition to allow for the use of hounds.

Jamie Al-Haj – Rapid City, SD spoke in opposition to the use of hounds for hunting.

PROPOSALS

Public Waters – Indian Springs

Jacquie Ermer, wildlife regional supervisor, presented the recommended change to

1. Modify applicable dates and the area included in “no discharge of a firearm from a boat” of Indian Springs and Antelope Lakes in Clark County.
2. Modify applicable dates and the area included in the closure of fishing from a boat of Indian Springs and Antelope Lakes in Clark County.

She explained that in 2017, HB1001 tasked the SD Game Fish and Parks to work on agreements with landowners on nonmeandered water issues. One such agreement was with a landowner on Indian Springs Lake in Clark County. The current rule was put into place in 2018 after discussions with a landowner who owned most of the flooded private property in the Indian Springs basin. It was the opportunity to balance the request of the landowner and the public recreational use of Indian Springs Lake. Landownership has changed hands since the original agreement. Due to water levels increasing in the

area, the new landowner has requested to simplify the boundaries of the current area closed to “discharging a firearm or fishing from a boat” on Indian Springs to also include the waters of Antelope Lake. Antelope Lake is currently designated as a State Waterfowl Refuge. As part of this request, the landowner also agreed to change the start date in the current rules 41:04:02:12b and 14:07:02:01b to October 20th, giving sportsmen and women an additional 10 days in the fall to hunt and fish from a boat while allowing the water to be open to public recreational use during the winter, spring, and summer months. This date would also align with boating regulations on other state refuges. Indian Springs Lake is a non-meandered body of water thus is subject to landowner request to close it to recreational use if so desires. By GFP staff working with the current landowners, Indian Springs Lake can remain open to public recreational activities with minimal restrictions for 2 months vs being shut down year-round.

Motioned by Bies, second by Whitmyre TO APPROVE THE RECOMMENDED CHANGES. Motion carried unanimously.

Waterfowl Seasons

Youth Waterfowl Hunting Season

Chad Switzer, Wildlife Administrator, presented no recommended changes to the youth waterfowl season.

Duck Hunting Season

Switzer presented the recommended changes to the duck hunting season as follows:

1. Remove daily bag limit of 5 mergansers (including 2 hooded mergansers) and include all mergansers in the normal duck daily bag limit.
2. Remove the possession limit of mergansers and include all mergansers in the normal duck possession limit.
3. Remove the ability to transfer certain nonresident licenses after a specific date.

He explained these recommended changes cleans up administrative rules for the implementation of the experimental options available to duck hunters. The allowance to transfer certain nonresident licenses after a specific date is unnecessarily complex and creates difficulties with the administration of licenses as well as creates confusion with hunters.

Motioned by Rissler, second by Whitmyre TO APPROVE THE RECOMMENDED CHANGES AS PRESENTED. Motion carried unanimously.

Early Fall Canada Goose

Switzer presented the recommended change to remove restriction for nonresident hunters in the counties of Beadle, Brookings, Hanson, Kingsbury, Lake, Lincoln, McCook, Miner, Moody, Sanborn, Turner, Union, and Minnehaha counties.

Motion by Bies, second by Bartling TO APPROVE THE RECOMMENDED CHANGES TO THE EARLY FALL CANADA GOOSE SEASON. Motion carried unanimously.

Goose Hunting Season, August Management Take and Special Canada Goose Hunting season.

Switzer presented no recommended changes to the goose hunting season.

Common Snipe

Switzer presented no recommended changes to the snipe season.

Tundra Swan Hunting Season

Switzer presented no recommended changes to the tundra swan season.

Sandhill Crane

Switzer presented no recommended changes to the sandhill crane.

Waterfowl Hunting Season

Switzer presented no recommended changes to the waterfowl hunting season.

Elk License Allocation

Switzer presented the administrative action to allocate licenses for the 2022-2023 elk hunting seasons.

2021			2022-2023		
Black Hills Elk			Black Hills Elk		
Unit	Resident Licenses		Unit	Resident Licenses	
	Any Elk	Atl Elk		Any Elk	Atl Elk
	21	23		21	23
H1A	50		H1A	60	
H1B		15	H1B		65
H2A	240		H2A	290	
H2B		25	H2B		50
H2C			H2C		50
H2D			H2D		
H2E		50	H2E		40
H2F			H2F		40
H2G			H2G		40
H2H		5	H2H		10
H2I		15	H2I		10
H2J		15	H2J		10
H3A	100		H3A	120	
H3B		30	H3B		45
H3C		30	H3C		45
H3D		30	H3D		45
H3E		60	H3E		60

H3F		60	
H3G		60	
H4A	20		
H4B		40	
H5A	5		
H7A	20		
H7B		15	
H9A	15		
H9B		40	
TOTAL	450	490	940
Contingency	NA	98	98

H3F		60	
H3G		60	
H4A	20		
H4B		40	
H5A	5		
H7A	25		
H7B		20	
H9A	15		
H9B		40	
TOTAL	535	730	1,265
Contingency	NA	146	146

Archery Elk			
Unit	Resident Licenses		
	Any Elk	Atl Elk	
	21	23	
H1A	20	10	
H2A	80	40	
H3A	35	20	
H4A			
H5A	2		
H7A	10		
H9A			
TOTAL	147	70	217

Archery Elk			
Unit	Resident Licenses		
	Any Elk	Atl Elk	
	21	23	
H1A	30	20	
H2A	100	40	
H3A	40	30	
H4A			
H5A	2		
H7A	10		
H9A			
TOTAL	182	90	272

2021			
Prairie Elk			
Unit	Resident Licenses		
	Any Elk	Atl Elk	
	21	23	
9A	10	15	
11A		18	
11B	16		
11C	16		
11D		30	
11E		30	
11F		30	
15A	8		
15B		5	
27A	10	10	
35A	4	8	
35B	4	12	
35C			
35D			
35E			
35F			
49A			
WRA	10	20	
TOTAL	78	178	256

2022-2023			
Prairie Elk			
Unit	Resident Licenses		
	Any Elk	Atl Elk	
	21	23	
9A	4		
11A		5	
11B	16		
11C	16		
11D		30	
11E		10	
11F			
15A	8		
15B		5	
27A	20	20	
35A	10		
35B	8		
35C		15	
35D		15	
35E		20	
35F		20	
49A	10	15	
WRA	10	20	
TOTAL	102	175	277

Custer State Park			
Season	Resident Licenses		
	Any Elk	Atl Elk	
	21	23	
CEE-CU1	3		
CUE-CU1	9		
TOTAL	12		12

Custer State Park			
Season	Resident Licenses		
	Any Elk	Atl Elk	
	21	23	
CEE-CU1	4		
CUE-CU1	12		
TOTAL	16		16

Motioned by Bies, second by Bartling TO APPROVE THE ADMINISTRATIVE ACTION ALLOCATING ELK LICENSES BY SEASONS AND UNITS. Motion carried unanimously.

License Forms and Fees

Switzer presented the recommended change to remove the inclusion of the state migratory bird certification permit with the nonresident spring snow goose, nonresident early fall Canada goose licenses, nonresident 3-day licenses, nonresident youth waterfowl licenses and decrease applicable license fees by \$5 each. He explained that currently, several nonresident waterfowl licenses include the migratory bird certification permit. With the 2-tiered duck license option, applicants must select a migratory bird certification permit to reflect their choice of the traditional or 3-duck license option and pay the \$5 fee for the applicable migratory bird certification permit.

Motioned by Bies, second by Bartling TO APPROVE THE RECOMMENDED CHANGES TO THE HUNTING LICENSE FEES. Motion carried unanimously.

Application for License

Switzer presented the recommended changes to the license application as follows:

1. Remove the requirement for unlimited access permits for archery, muzzleloader, mentor, youth, and apprentice deer license holders to hunt certain deer hunting units and public lands.
2. Limit the number of archery access permits for Unit WRD-27L to no more than 20 "any deer" access permits for residents and no more than 5 "any deer" access permits for nonresidents.

He explained research on R3 efforts (i.e., Recruitment, Reactivation, Retention) has identified rule/regulation complexity to be one of several obstacles for new sportsmen and women. The removal of these access permits will greatly simplify hunting regulations regarding mentor, archery, muzzleloader, youth, and apprentice deer license holders while having no impact to deer management in these areas. The number of access permits currently available, across all of these seasons, has created unnecessary complexity for sportsmen and women as well as the administration of these access permits in the licensing system. Unlimited access permits were established with the intent to evaluate harvest and participation on specific management areas by deer hunters with statewide or region-wide (e.g., West River Archery Deer) license types including archery, muzzleloader, mentor, youth, and apprentice license types. Deer harvest and participation was evaluated on all areas that required an access permit in 2019 and results were presented to the Commission. As a result, the Commission took action to limit archery deer access permits to 500 residents and 125 nonresidents on management unit 35L and no other unlimited license types or access permit areas were limited. Since 2019, no changes have been made to the number of access permits available for archery deer hunters in management unit 35L and no further changes have been made to the unlimited access permit areas. Through the 2021 deer hunting season, hunting effort and harvest success by access permit users has been collected, providing sufficient baseline information regarding use on these areas. Harvest and success by hunters with statewide or region-wide license types will continue to be estimated at the firearm deer management unit level. In the event there

is a desire to consider limiting access permits on additional areas and user groups, harvest and success data will be used to evaluate use by user groups on these areas beginning the 2022 deer hunting season. This change will simplify deer hunting regulations for statewide and region-wide deer license type user groups and reduce complexity of the deer licensing system. Limited access units (LAUs) are intended to reduce hunter densities and provide a quality hunt experience. Trend data of supports limiting the number of resident and nonresident archery access permits for Unit WRD-27L to help meet its LAU objective. In addition, a reduction in archery deer harvest will help meet the 80% firearm hunter success goal identified in the deer management plan for LAUs.

Motioned by Rissler, second by Whitmyre TO APPROVE THE RECOMMENDED CHANGE AS PRESENTED. Motion carried unanimously.

Elk Seasons (April Finalization)

Black Hills Elk Hunting Season

Chad Switzer, wildlife program administrator, presented the recommended changes to the elk seasons.

Black Hills Elk

1. Adjust the total number of available licenses from 425 "any elk" and 700 "antlerless elk" licenses (total of 1,125 licenses) to no more than 500 "any elk" and 1,000 "antlerless elk" licenses (total of 1,500 licenses).
2. Modify the boundaries of BHE-H9A and BHE-H9B to correct unit boundary.

He explained the recommended maximum number of elk licenses will be established in administrative rule and the GFP Commission via administrative action will determine specific number of licenses by tag types and allocation amongst hunting units. Updated population objectives and any recommended license adjustments will be shared at the March Commission meeting once preliminary harvest estimates have been obtained and population modeling exercises have been completed. There is currently a small geographic area that technically does not reside in any elk hunting unit; this unit boundary modification will correct this oversight.

Custer State Park Elk

1. Adjust the total number of available licenses from 9 "any elk" licenses to no more than 15 "any elk" licenses.
2. Administrative rule clean-up for season dates.

Switzer explained the recommended maximum number of elk licenses will be established in administrative rule and the GFP Commission via administrative action will determine specific number of licenses by tag types and allocation amongst hunting units. Updated population objectives and any recommended license adjustments will be shared at the March Commission meeting once preliminary harvest estimates have been obtained and population modeling exercises have been completed. Of the nine any elk licenses issued for Custer State Park, eight will be valid specifically for Custer State Park and the ninth any elk license will be made available to a non-governmental organization as a raffle license that is valid in Custer State Park and any Black Hills elk hunting unit in which an any elk license is issued.

Custer State Park Early Archery Elk

1. Adjust the total number of available licenses from 3 "any elk" to no more than 10 "any elk" licenses.

Switzer explained the recommended maximum number of elk licenses will be established in administrative rule and the GFP Commission via administrative action will determine specific number of licenses by tag types and allocation amongst hunting units. Updated population objectives and any recommended license adjustments will be shared at the March Commission meeting once preliminary harvest estimates have been obtained and population modeling exercises have been completed.

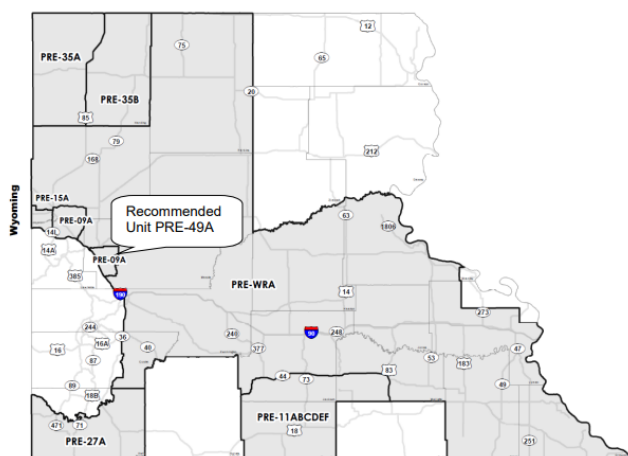
Archery Elk Hunting Season

1. Adjust the number of licenses available from 142 "any elk" and 80 "antlerless elk" licenses (total of 222 licenses) to no more than 200 "any elk" and 100 "antlerless elk" licenses (total of 300 licenses).

Switzer explained the recommended maximum number of elk licenses will be established in administrative rule and the GFP Commission via administrative action will determine specific number of licenses by tag types and allocation amongst hunting units. Updated population objectives and any recommended license adjustments will be shared at the March Commission meeting once preliminary harvest estimates have been obtained and population modeling exercises have been completed.

Prairie Elk

1. Adjust the number of licenses available from 78 "any elk" and 178 "antlerless elk" licenses (total of 256 licenses) to no more than 100 "any elk" and 300 "antlerless elk" licenses (total of 400 licenses).
2. Modify Unit PRE-9A (see map).
3. Establish a new unit (PRE-49A) to include a portion of Meade County and season dates (see map).
4. Correct season dates in administrative rule for units PRE-11B, PRE-11C, PRE-11D, PRE-35A, and PRE-35B.



Switzer explained the recommended maximum number of elk licenses will be established in administrative rule and the GFP Commission via administrative action will determine specific number of licenses by tag types and allocation amongst hunting units. Updated population objectives and any recommended license adjustments will be shared at the March Commission meeting once preliminary harvest estimates have been obtained and population modeling exercises have been completed. The recommended changes to prairie elk hunting unit boundaries and season date changes are to improve elk management on private land and simplify season dates.

Motion by Bartling with second by Whitmyre TO APPROVE THE RECOMMENDED CHANGES TO THE ELK SEASON. Motion carried unanimously.

Missouri River (Pierre) Waterfowl Refuge (April Finalization)

Kirschenmann presented the recommended change to withdraw proposal and retain current refuge boundary. He explained the Commission denied a petition submitted by the South Dakota Migratory and Upland Gamebird Association as a component of the petition was to include a 50-year clause. The Commission, however, did develop a proposal that includes the addition to the Oahe Dam State Waterfowl Refuge as requested by the petitioner and believes the requested additions to the Oahe Dam State Waterfowl Refuge deserve an opportunity for public comment. It is unknown if the proposed refuge change will enhance waterfowl hunting opportunities in the Pierre/Ft. Pierre area at a level greater than the current public hunting opportunities that would be taken away. In addition, the total area in the proposed refuge expansion and removal of public access for waterfowl hunting opportunities is 14,768 acres; a 444% increase in size that includes 11,704 acres of water and 3,064 acres of land. The proposed refuge expansion would remove shoreline hunting that includes 24.2 miles upstream and 24.5 miles downstream of Oahe Dam.

No action was taken.

Lake Francis Case Walleye Regulations (April Finalization)

John Lott, fisheries chief, presented the recommended changes to remove the restriction requiring anglers to keep the first four walleye caught when fishing through the ice for the lower portion of Lake Francis Case. He explained current walleye regulations for the lower portion of Lake Francis Case, while fishing through the ice, include:

1. The first four walleyes caught must be kept
2. The 15-inch minimum length limit does not apply

A proposal was made by the commission at their January 2022 meeting, in response to a petition, that would remove the requirement that the first four walleyes caught be kept, while fishing through the ice in the lower portion of Lake Francis Case. The proposal, with the department recommended changes, would remove the existing walleye harvest restriction requiring anglers to not release any walleye caught while fishing through the ice in the lower portion of Lake Francis Case. It would also remove the exemption to the 15-inch minimum length limit in effect when fishing through the ice in this portion of the reservoir, meaning the 15-inch minimum length limit would be in effect for all areas of Lake Francis Case from September 1 through June 30. Specific regulations for walleye harvest when fishing through the ice on the lower end of Lake Francis Case were enacted in 2001 in response to public concern over high mortality of walleye caught from deep water and then released. The intent of the regulations was to reduce post-release mortalities by prohibiting release of walleye and limiting the number

of walleyes caught during a fishing trip. There is evidence to support the idea that post-release mortality increases at deeper depths. The special walleye harvest regulations for the lower portion of Lake Francis Case, when fishing through the ice, is the only case in the state where a regulation specifically requiring fish to be harvested exists because of potential post-release mortality. However, the same issue occurs at other locations during various times of the year, including in the lower portion of Lake Francis Case during the summer.

Motioned by Locken, second by Spring TO APPROVE THE RECOMMENDED CHANGE AS PRESENTED. Roll Call Vote: Bartling – No, Bies – Yes, Locken – Yes, Olson – absent, Rissler – Yes, Sharp – Yes, Spring – Yes, Whitmyre – Yes. Motion passed 6-1

Public Waters (April Finalization)

Jacque Ermer, wildlife regional supervisor, presented the recommended change to remove no boating zones and allow for non-motorized watercraft within the Waubay National Wildlife Refuge and the Waubay State Game Bird Refuge, establish a no wake zone at a new boat ramp at Lake Poinsett State Recreation Area in Brookings County, modify the no wake zone at the Belle Fourche Reservoir in Butte County to include all boat ramps. The noted change from the original proposal was to modify the use of existing safety zone definitions currently in rule.

Motioned by Bartling, second by Rissler TO APPROVE THE MODIFICATION TO THE PROPOSAL AS PRESENTED. Motion carried unanimously.

DIVISION OF PARKS AND RECREATION

Lake Vermillion SE Boat Ramp Park Entrance License Requirement

Al Nedved, parks and recreation deputy director presented the recommended change to move the entrance station to before the southeast boat ramp at Lake Vermillion.

Motioned by Rissler, second by Bartling TO APPROVE THEN CHANGE TO THE BOUNDRARY. Motion carried unanimously.

DOT Collector Road Funding Plan 2023

Adam Kulesa, parks division administrator, presented a brief summary of the 5-year agreement between DOT and GFP for 2.8 million dollars annually in collector road funding. Projects along with expenses for FY22 were outlined and a projection of projects and funding amounts was provided for FY23. Commissioner Sharp asked about the Shep's Canyon Road and was provided information regarding a project completed in 2021 to add asphalt millings, gravel, and base-one to improve that road surface.

Camping, Visitation and Revenue Report

Al Nedved, Deputy Director for Parks presented monthly camping, visitation, and revenue that after the reports. Nedved indicated that the reports are now being generated by the new GoOutdoors system, and we have noticed there are some

inaccuracies due to the old and new systems trying to work together. So, the February reports should be disregarded and hopefully March reports will reflect accurate numbers.

DIVISION OF WILDLIFE

Track Chair Fundraising – Samp Family

Emmett Keyser, wildlife regional supervisor and Peter and Michael Samp spoke regarding a partnership with between GFP and the SD Parks and Wildlife Foundation to purchase additional track chairs to assist people with mobility issues in participating in outdoors activities.

Motion by Spring, second by Bies TO ADOPT RESOLUTION 22-03 (APPENDIX A) FORMALLY SUPPORT, ENCOURAGE, COLLABORATE, AND DO HEREBY AUTHORIZE THIS BENEVOLENT FUNDRAISING EFFORT BY THE SAMP FAMILY. Motion carried unanimously.

Shooting Range Land Purchase

Paul Coughlin, terrestrial habitat program administrator and John Kanta, terrestrial's chief, presented the resolution authorizing purchase of 400 acres in Meade County, SD from the SD Parks and Wildlife Foundation at the price of \$900,000.00 plus all associated costs incurred by the foundation from its purchase and holding of the property.

Motion by Locken, second by Rissler TO APPROVE RESOLUTION 22-04 (APPENDIX B) Roll Call Vote: Bartling – Yes, Bies – Yes, Locken – Yes, Olson – absent, Rissler – Yes, Sharp – Yes, Spring – No, Whitmyre – Yes. Motion passed 6-1

Nelson-Hendrickson GPA Exchange

Paul Coughlin, terrestrial habitat program, provided information on a proposed GPA land exchange in Day County to swap the 200-acre Nelson-Hendrickson GPA valued at \$244,000 for the 240-acre Althoff property valued at \$244,000.

Mentored Volunteer Hunting Program

Paige O'Farrell, Volunteer Coordinator/Naturalist and Katie Schlafke, Naturalist, presented information on eh mentored volunteer hunting program.

Nest Predator Bounty Program Update

Jacque Ermer, wildlife regional supervisors provided an update on the nest predator bounty program explaining that a key priority of Governor Noem's Second Century Initiative is focused on the next generation of trapping and creating outdoor families. As part of this initiative, GFP will kick off the fourth year of the program designed to enhance localized pheasant and duck nest success by removing nest predators from the landscape while engaging families in trapping and outdoor recreation. For 2022, GFP will offer \$10/tail from trapped or hunted raccoon, striped skunk, badger, red fox, and opossum. New for 2022, the month of March will be open only to resident youth under age 18; a month earlier than for those 18 of age or older. Starting April 1, all residents are eligible to participate in the program. The program runs through July 1, 2022, or until a maximum total payout of \$500,000 is reached. Since 2019, over 5,500 individuals have participated in the program with

approximately 20% being younger than 18 years old. In 2021, 29% of participants were under age 18 which is 16% increase from 2020. GFP will again hold a weekly giveaway drawing for all youth under age 18 that participate in the program. The giveaway consists of a GFP-sponsored trapping package that included three live traps, a knife, and a copy of the National Trappers Association Trapping Handbook. For more information on the Nest Predator Bounty Program, visit <https://gfp.sd.gov/bounty-program/>. GFP also offers a variety of trapping-based education opportunities, including Outdoor Campus classes such as Predator Calling, Snare Making and Introduction to Trapping. For more information on trapping education opportunities provided by GFP, visit <https://southdakota.storefront.kalkomey.com/em/programs/18>

Waterfowl Update

Rocco Murano, senior wildlife biologist, provided a powerpoint presentation on flyway management, hunting season selection, breeding population and habitat survey, as well as duck framework.

Elk Population Update

Senior wildlife biologists Andy Lindbloom and Andrew Norton provided an update explaining the management of elk populations in South Dakota is guided by the Elk Action Plan that was adopted by the GFP commission in 2021. The population objective for elk in the Black Hills is 6,000 – 8,000 wintering elk, and 500 – 600 in Custer State Park. Approximately 735 elk were harvested in the 2021 Black Hills hunting seasons, with hunter success for “any elk” hunters at 87% and 80% of the bulls harvested were 4 years of age or older. Harvest success and age objectives are currently being exceeded and GFP is recommending increases in “any elk” licenses to manage towards objectives and increase hunter opportunity. Documented elk recruitment and adult survival the past few years has resulted in a growing elk population, and GFP is recommending increased antlerless elk tags to increase cow harvest, provide more hunter opportunity, and slow elk herd growth. Current model projections suggest the elk population in the Black Hills is approximately 7,000.

License Sales Update

Tom Kirschenmann, wildlife division director, provided an update on resident and nonresident license sales.

Adjourn

Meeting adjourned at 11:00 a.m.

Respectfully Submitted,



Kevin Robling, Department Secretary

Appendix A Resolution 22-03

WHEREAS, the Department of Game, Fish and Parks (Department) has worked to develop and improve access opportunities for hunters, anglers, and park visitors at our agency building facilities, our public fishing areas, our boat ramps, our water access facilities, our campgrounds, our trails, and other public use facilities associated with our State Park System; and

WHEREAS, approximately 12.26%¹ of all South Dakotans suffer from a mobility disability; and

WHEREAS, the Department is continually striving to improve access to outdoor recreational opportunities for all members of the public, but especially for those individuals with disabilities and mobility issues; allowing them to safely and comfortably enjoy outdoor recreational opportunities of all kinds across our state; and

WHEREAS, Rollyn H. Samp (Rolly), an avid South Dakota hunter, angler, outdoorsman, conservationist, and mentor, with a long history of working for and collaborating with various government and charitable entities, suffers from cerebral ataxia, a disease where he feels like he is falling.

WHEREAS, Rolly had the opportunity to utilize a special mobility “track chair” during a 2020 family vacation where he was able to hike and fish in the Grace Coolidge Fishing Area and enjoy a family fishing trip to Center Lake in the Black Hills of SD; and

WHEREAS, Rolly and his granddaughter Margaret K. Samp submitted a very sincere and heart-warming cover story published in SD Conservation Digest sharing the positive experience he and his family had because of their ability to access the track chair; and

WHEREAS, following the publishing of this story, Rolly, his son Michael, and their family approached the Department and have expressed a strong desire to help ensure all South Dakotans challenged with mobility issues can enjoy similar outdoor experiences with their families and friends; and

WHEREAS, with the goal of helping the Department raise funds to provide additional track chairs and to help the Department market, promote, the future availability of additional track chairs enabling even more individuals with mobility challenges the opportunities to gain access to the outdoors by placing additional track chairs at various State Parks, Recreation Areas and Regional Wildlife Office facilities geographically dispersed across South Dakota; and

WHEREAS, both the Department and the SD Game Fish and Parks Commission (Commission) wish to recognize and support this benevolent offer brought forth by the

¹ SD Department of Public Safety – 109,814 disability parking placards issued in 2021,
US Census Bureau, July 2021 – SD Population 895,376

Samp Family to help improve access to the outdoors for those with mobility challenges;
and

WHEREAS, the Samp Family has a long history of involvement as well as expertise in fundraising for charitable and benevolent causes; and

WHEREAS, the Commission has also expressed a strong desire to help foster additional outdoor recreational opportunities for all South Dakotans; the Commission rises to strongly support this effort by the Samp Family.

NOW, THEREFORE, BE IT RESOLVED, the Department and Commission wish to formally support, encourage, collaborate, and do hereby authorize this benevolent fundraising effort by the Samp Family through this formal Commission Resolution in an effort to ensure access to South Dakota's rich outdoor heritage for those citizens with mobility challenges well into the future.

Appendix B
Resolution 22-04

Whereas, the Department of Game, Fish and Parks (DEPARTMENT) desires to acquire real property (PROPERTY) presently owned by the South Dakota Parks and Wildlife Foundation (FOUNDATION), which PROPERTY is legally described as:

Government Lots 3 and 4 in Section 3 of Township 3 North, Range 8 East of the Black Hills Meridian, Meade County, South Dakota; and the W $\frac{1}{2}$ of Section 34 in Township 4 North, Range 8 East of the Black Hills Meridian, Meade County, South Dakota, less a portion of subject property as conveyed in the Quit Claim Deed recorded in Book 140 on Page 265, containing 400 acres, more or less; and

Whereas, said PROPERTY is to be acquired and utilized by DEPARTMENT for the purpose of developing a public shooting range; and Whereas, DEPARTMENT has evaluated the PROPERTY and determined it is suitable for developing a public shooting range; and

Whereas, SDCL 41-4-1.1 requires before purchasing property, DEPARTMENT notify adjacent owners of land to the property being acquired by publishing notice once in each legal newspaper of the county in which the property to be purchased is located; and

Whereas, DEPARTMENT has published the required legal notice 30 days prior to the date of action by the Game, Fish and Parks Commission (COMMISSION) authorizing the intended purchase, which notice included the meeting time and location at which COMMISSION action is expected and by giving notice of instructions for presenting oral and written comments to the COMMISSION; and

Whereas, the COMMISSION has reviewed any comments received relative to the intended purchase, and after consideration of the same, the COMMISSION approves the purchase of said property for developing a public shooting range.

Now, therefore, be it resolved, the DEPARTMENT is authorized to purchase the PROPERTY from the FOUNDATION at the price of \$900,000.00 plus all associated costs incurred by the FOUNDATION from its purchase and holding of the PROPERTY, including real estate taxes, closing costs, and estimated loss of income on investments liquidated for its purchase and holding of the PROPERTY, with the purchase by DEPARTMENT to be completed on or before April 30, 2022.

EXISTING SITE | SITE LOCATION



Appendix C
Resolution 22-05

WHEREAS, Luke Worthington of Gillette, Wyoming, submitted a Petition to the Game, Fish and Parks Commission (Commission) dated February 7, 2022, requesting that the Game, Fish and Parks Commission amend ARSD § 41:08:01 (Furbearer seasons) – to allow for nonresidents to use hounds to hunt racoons for the reasons more fully set out in the petition (hereinafter referred to as “the Petition”); and

WHEREAS, all members of the Commission have been furnished with and have reviewed a copy of the Petition; and

WHEREAS, the Commission has been advised that a copy of the Petition has been served on all members of the Interim Rules Review Committee and Director of the Legislative Research Council as required by SDCL § 1-26-13; and

WHEREAS, the Commission has been advised that SDCL § 1-26-13 requires that within thirty (30) days of submission of a Petition, the Commission shall either “deny the petition in writing (stating its reasons for the denials) or shall initiate rule-making proceedings in accordance with SDCL 1-26-4.”; and

WHEREAS, the Commission has been advised and is of the opinion that a hearing on the Petition is neither statutorily required nor necessary; and

WHEREAS, the Commission has reviewed and carefully considered the requirements and procedures set out in SDCL §1-26-13 and the contents of the Petition, including the reasons advanced by Petitioner in support of allowing nonresidents to use hounds to hunt racoons; and

WHEREAS, there is concern over increased trespass in eastern South Dakota due to smaller acreage; and

WHEREAS, the current prohibition is a result of concern brought forward by trappers and organizations; and

WHEREAS, the current fur prices are low, however when they should again increase there is concern over the number of participants coming into the state and competing with residents; and

WHEREAS, amending current rule would only benefit a very small number of participants.

NOW, THEREFORE, BE IT RESOLVED, that the Commission does hereby deny the Petition for the reasons hereinabove stated in this Resolution, which said Resolution

as adopted by the Commission shall constitute the Commission's written denial of the Petition and its reasons therefore.

BE IT FURTHER RESOLVED that the Petition, a record of the Commission's discussions concerning same, and this Resolution be made a part of the Minutes of the Commission meeting at which this Resolution is adopted, and further, that the Department be and it is hereby authorized and directed in compliance with SDCL §1-26-13 to serve a copy of an extract of that portion of the Commission minutes which pertain to the Commission's discussion of the Petition and its adoption of this Resolution, including a copy of the Resolution, on all members of the Interim Rules Review Committee and Director of the Legislative Research Council with copies also to be provided to the Petitioner, Luke Worthington of Gillette, Wyoming.

Comes, Rachel

From: info@gfp.sd.us
Sent: Friday, April 1, 2022 12:22 PM
To: jpallen12161982@gmail.com
Cc: Comes, Rachel
Subject: Petition for Rule Change Form

Categories: Commission

South Dakota - Game, Fish, and Parks

Petition for Rule Change

A new form was just submitted from the <http://gfp.sd.gov/> website with the following information:

ID: 132

Petitioner Name: Justin Allen

Address: 303 Merry Rd
Pierre, SD 57501

Email: jpallen12161982@gmail.com

Phone: 605-651-0083

Rule Identification:

Describe Change: Make the following rule change: Change the Apprentice and Mentored Deer Season start date to September 1.

Reason for Change: Reason for Change: Today's youth and potential new hunters have many distractions and obstacles preventing them from getting into hunting and the outdoors. Making youth and new hunters first hunting experiences a pleasant and overall positive experience will keep them coming back for a lifetime. Opening the apprentice and mentored deer season September 1 every year will provide additional time (1-2 additional weeks) for these hunting opportunities to young and new hunters during a period of the season where weather is conducive to a quality hunting experience. These additional days would allow these hunters more time afield to pursue deer before other seasons such as grouse, pheasants, waterfowl, other deer season, etc. may affect the quality/success of their hunt and also tie up the availability of parents/family/friends/mentors who accompany these youth and new hunters. This change to the season would be a benefit to young hunters and aligns with the SD GFP departments "R3" Recruitment, Retention, Reactivation Criteria guidelines. This change should help continue to recruit, retain and introduce young and new hunters to the great outdoors of South Dakota.

GAME, FISH, AND PARKS COMMISSION ACTION FINALIZATION

Custer State Park Early Archery Elk Hunting Season Chapter 41:06:28

Commission Meeting Dates:	Proposal	January 4-5, 2022	Pierre
	Public Hearing	April 7, 2022	Watertown
	Finalization	April 7-8, 2022	Watertown

COMMISSION PROPOSAL

Duration of Proposal: 2022 and 2023 hunting seasons.

Season Dates: September 1-30, 2022
September 1-30, 2023

Licenses: 4 resident "Any Elk" licenses

Requirements and Restrictions:

1. The unit is open within the boundaries of Custer State Park.
2. Any elk that is harvested must be inspected by a Department representative within 24 hours after kill.

Proposed changes from last year:

1. Adjust the total number of available licenses from 3 "any elk" to no more than 10 "any elk" licenses.

SUPPORTIVE INFORMATION

The proposed maximum number of elk licenses will be established in administrative rule and the GFP Commission via administrative action will determine specific number of licenses by tag types and allocation amongst hunting units.

Updated population objectives and the recommended number of licenses will be shared at the March Commission meeting once preliminary harvest estimates have been obtained and population modeling exercises have been completed.

Year	Licensed Hunters	1st Choice Applicants	Success Rate	Elk Harvested
2012	3	2,078	0%	0
2013	3	2,740	100%	3 bulls
2014	4	3,023	100%	4 bulls
2015	4	3,600	75%	3 bulls
2016	3	3,707	33%	1 bull
2017	3	3,704	33%	1 bull
2018	3	3,772	67%	2 bulls
2019	3	4,055	100%	3 bulls
2020	3	4,353	33%	1 bull
2021	3	4,456	33%	1 bull

Year	Licensed	1st Choice	Success	Elk
------	----------	------------	---------	-----

APPROVE _____	MODIFY _____	REJECT _____	NO ACTION _____
----------------------	---------------------	---------------------	------------------------

	Hunters	Applicants	Rate	Harvested
2008	8	3,084	25%	2 bulls
2009	8	3,134	25%	2 bulls
2010	5	3,031	0%	None
2011	3	2,000	33%	1 bull
2012	3	2,078	0%	0
2013	3	2,740	100%	3 bulls
2014	4	3,023	100%	4 bulls
2015	4	3,600	75%	3 bulls
2016	3	3,707	33%	1 bull
2017	3	3,704	33%	1 bull
2018	3	3,772	67%	2 bulls

DEPARTMENT RECOMMENDATION

Recommended changes from proposal: None.

DRAFT ADMINISTRATIVE RULE CHANGES

The following are proposed draft changes that are intended to incorporate the recommended changes adopted by the Commission.

41:06:28:01. Custer State Park early archery elk hunting season established -- Number and type of licenses -- Season dates. The Custer State Park early archery elk hunting season is open one-half hour before sunrise to one-half hour after sunset each day and is restricted by chapter 41:06:07. No more than ~~three~~ 10 "any elk" licenses may be issued for the Custer State Park early archery elk hunting season. The Custer State Park early archery elk hunting season is open from September 1 through September 30.

RESIDENT/NONRESIDENT CRITERIA

Not Applicable.

RECRUITMENT, RETENTION, REACTIVATION (R3) CRITERIA

Not Applicable.

FISCAL IMPACT

Not Applicable.

APPROVE _____ MODIFY _____ REJECT _____ NO ACTION _____

**GAME, FISH, AND PARKS COMMISSION ACTION
FINALIZATION**

**Custer State Park Elk Hunting Season (Any Elk)
Chapter 41:06:27**

Commission Meeting Dates:	Proposal	January 4-5, 2022	Pierre
	Public Hearing	April 7, 2022	Watertown
	Finalization	April 7-8, 2022	Watertown

COMMISSION PROPOSAL

Duration of Proposal: 2022 and 2023 hunting seasons.

Season Dates: October 1-31, 2022
October 1-31, 2023

Licenses: 12 resident "Any Elk" licenses

Requirements and Restrictions:

1. The unit is open within the boundaries of Custer State Park.
2. Any elk that is harvested must be inspected by a Department representative within 24 hours after kill.

Proposed changes from last year:

1. Adjust the total number of available licenses from 9 "any elk" licenses to no more than 20 "any elk" licenses.
2. Administrative rule clean-up for season dates.

SUPPORTIVE INFORMATION

The proposed maximum number of elk licenses will be established in administrative rule and the GFP Commission via administrative action will determine specific number of licenses by tag types and allocation amongst hunting units.

Updated population objectives and the recommended number of licenses will be shared at the March Commission meeting once preliminary harvest estimates have been obtained and population modeling exercises have been completed.

Of the 12 any elk licenses issued for Custer State Park, 11 will be valid specifically for Custer State Park and the twelve any elk license will be made available to a non-governmental organization as a raffle license that is valid in Custer State Park and any Black Hills elk hunting unit in which an any elk license is issued.

Year	Licenses	Applicants	Success Rate
2011	11	12,060	91%
2012	4	11,133	100%
2013	4	12,888	100%
2014	4	11,762	100%
2015	8	9,136	100%
2016	9	8,951	89%
2017	9	8,828	89%
2018	9	8,670	89%
2019	9	8,949	89%
2020	9	9,385	89%
2021	9	9,215	100%

APPROVE _____ **MODIFY** _____ **REJECT** _____ **NO ACTION** _____

DEPARTMENT RECOMMENDATION

Recommended changes from proposal: None.

DRAFT ADMINISTRATIVE RULE CHANGES

The following are proposed draft changes that are intended to incorporate the recommended changes adopted by the Commission.

41:06:27:01. Custer State Park elk hunting season established -- Number and type of licenses -- Season dates. The Custer State Park elk hunting season is open from one-half hour before sunrise to one-half hour after sunset each day of the season and is restricted by chapter 41:06:07. No more than ~~nine~~ 20 "any elk" licenses may be issued for the Custer State Park elk hunting season. The Custer State Park elk hunting season for Unit CUE-CU1 is open October 1-31 through December 31.

RESIDENT/NONRESIDENT CRITERIA

Not Applicable.

RECRUITMENT, RETENTION, REACTIVATION (R3) CRITERIA

Not Applicable.

FISCAL IMPACT

Not Applicable.

APPROVE _____	MODIFY _____	REJECT _____	NO ACTION _____
---------------	--------------	--------------	-----------------

**GAME, FISH AND PARKS COMMISSION ACTION
FINALIZATION**

**Archery Elk Hunting Season
Chapter 41:06:43**

Commission Meeting Dates:	Proposal	January 4-5, 2022	Pierre
	Public Hearing	April 7, 2022	Watertown
	Finalization	April 7-8, 2022	Watertown

COMMISSION PROPOSAL

Duration of Proposal: 2022 and 2023 hunting seasons.

Season Dates: Black Hills Units: September 1-30, 2022
September 1-30, 2023

Open Area: See attached map

Licenses: 182 “any elk” and 90 “antlerless elk” licenses (total of 272 licenses)

Requirements and Restrictions:

1. No person may possess more than one (1) elk license of any type in a year.
2. No more than two persons may submit applications together.
3. Except for landowner/operator preference applicants, no person who receives a license in the first drawing for this season shall be eligible to apply for an archery elk license in first drawings for the next 9 years.
4. One-half of the licenses allocated in each unit are available for landowner/operator preference application. Only one member of each qualifying landowner/operator household may apply every year.
5. Any elk harvested must be inspected by a Department representative within 24 hours after kill.

Proposed changes from last year:

1. Adjust the number of licenses available from 142 “any elk” and 80 “antlerless elk” licenses (total of 222 licenses) to no more than 200 “any elk” and 150 “antlerless elk” licenses (total of 350 licenses).

SUPPORTIVE INFORMATION

The proposed maximum number of elk licenses will be established in administrative rule and the GFP Commission via administrative action will determine specific number of licenses by tag types and allocation amongst hunting units.

Updated population objectives and the recommended number of licenses will be shared at the March Commission meeting once preliminary harvest estimates have been obtained and population modeling exercises have been completed.

DEPARTMENT RECOMMENDATION

Recommended changes from proposal: None.

APPROVE _____ **MODIFY** _____ **REJECT** _____ **NO ACTION** _____

Year	Licensed Hunters	Hunter Success	Bulls Harvested	Cows Harvested	Total Harvest
2017	269	26%	50	20	70
2018	219	38%	65	19	84
2019	216	42%	77	14	91
2020	204	45%	80	12	92
2021	219	43%	80	14	94

2021 Unit	"Any Elk"					"Antlerless Elk"				
	Appl. 1st Choice	Licensed Hunters	Harvest Success	Bulls Harvested	Cows Harvested	Appl. 1st Choice	Licensed Hunters	Harvest Success	Bulls Harvested	Cows Harvested
H1	754	20	40%	8	0	5	10	20%	0	2
H2	4,067	81	63%	48	3	75	40	18%	0	7
H3	756	36	56%	18	2	22	20	5%	0	1
H5	39	2	0%	0	0	NA	NA	NA	NA	NA
H7	248	10	60%	6	0	NA	NA	NA	NA	NA

*2021 preliminary harvest data

DRAFT ADMINISTRATIVE RULE CHANGES

The following are proposed draft changes that are intended to incorporate the recommended changes adopted by the Commission.

41:06:43:01. Archery elk hunting season established -- Number and type of licenses available -- Season dates. The archery elk hunting season is open from one-half hour before sunrise to one-half hour after sunset each day of the season. No more than ~~447~~ 200 "any elk" licenses and ~~70~~ 150 "antlerless elk" licenses may be issued for the archery elk hunting season. The archery elk hunting season for Units AAE-H1A, AAE-H2A, AAE-H3A, AAE-H4A, AAE-H5A, AAE-H7A, and AAE-H9A is open from September 1 through September 30.

RESIDENT/NONRESIDENT CRITERIA

Not Applicable.

RECRUITMENT, RETENTION, REACTIVATION (R3) CRITERIA

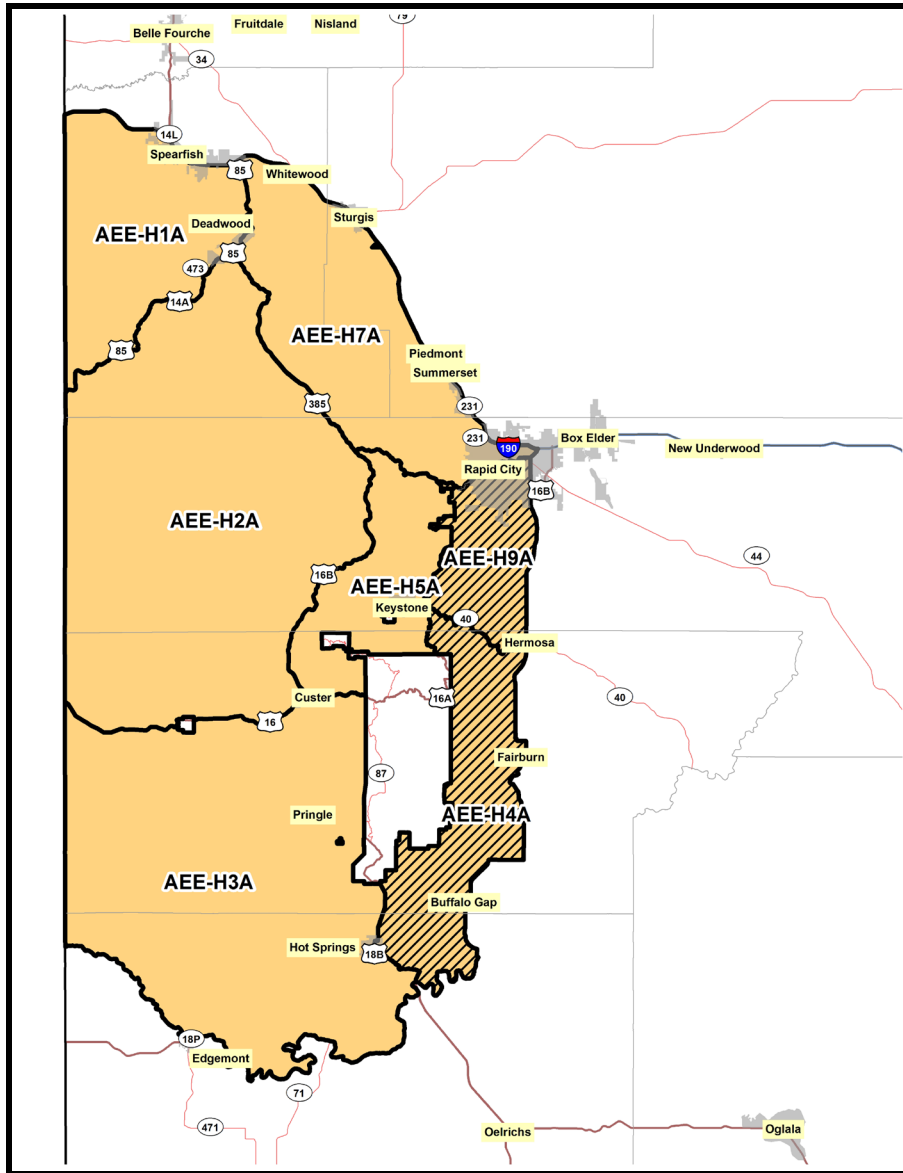
1. Does the regulation or fee inhibit a user's ability to participate? Not applicable.
2. Does the regulation increase the opportunity for new and existing users? Not applicable.
3. How does the regulation impact the next generation of hunters, anglers, trappers and outdoor recreationists? Not applicable.
4. Does the regulation enhance the quality of life for current and future generations by getting families outdoors? Not applicable.

FISCAL IMPACT

Not applicable.

APPROVE _____ MODIFY _____ REJECT _____ NO ACTION _____

BLACK HILLS ARCHERY ELK UNITS



Unit	2022 & 2023		Total Tags
	"Any" Elk Tags	"Antlerless" Elk Tags	
H1	30	20	50
H2	100	40	140
H3	40	30	70
H4	0	0	0
H5	2	0	2
H7	10	0	10
H9	0	0	0
TOTAL	182	90	272

GAME, FISH AND PARKS COMMISSION ACTION FINALIZATION

Black Hills Elk Hunting Season Chapter 41:06:26

Commission Meeting Dates:	Proposal Public Hearing Finalization	January 4-5, 2022 April 7, 2022 April 7-8, 2022	Pierre Watertown Watertown
----------------------------------	---	--	---

COMMISSION PROPOSAL

Duration of Proposal: 2022 and 2023 hunting seasons.

Season Dates:

Units	2022 Hunting Season Dates	2023 Hunting Season Dates
Any Elk Units	October 1 -31	October 1 -31
Antlerless Elk Units: H1B, H4B, H7B, and H9B	October 15-31 AND December 1-16	October 15-31 AND December 1-16
Antlerless Elk Units: H2B, H2E, H2H, H3B, and H3E	October 15-31	October 15-31
Antlerless Elk Units: H2C, H2F, H2I, H3C, and H3F	December 1-16	December 1-16
Antlerless Elk Units: H2D, H2G, H2J, H2D, and H3G	December 17-31	December 17-31

Open Area: See attached maps.

Licenses: 535 "any elk" and 730 "antlerless elk" licenses (total of 1,265 licenses)

Requirements and Restrictions:

1. No person may possess more than one (1) elk license of any type in a year.
2. No more than two persons may submit applications together.
3. Except for landowner/operator preference applicants, no person who receives a license in the first drawing for this season shall be eligible to apply for a Black Hills elk license in first drawings for the next 9 years.
4. One-half of the licenses allocated in each unit are available for landowner/operator preference. One member of each qualifying landowner/operator household may apply every year.
5. Any elk that is harvested must be inspected by a Department representative within 24 hours after kill.

Proposed changes from last year:

1. Adjust the total number of available licenses from 425 "any elk" and 700 "antlerless elk" licenses (total of 1,125 licenses) to no more than 600 "any elk" and 1,200 "antlerless elk" licenses (total of 1,800 licenses).
2. Modify the boundaries of BHE-H9A and BHE-H9B to correct unit boundary.
3. Establish hunting Unit BHE-H4B (administrative rule cleanup).

SUPPORTIVE INFORMATION

The proposed maximum number of elk licenses will be established in administrative rule and the GFP Commission via administrative action will determine specific number of licenses by tag types and allocation amongst hunting units.

Updated population objectives and the recommended number of licenses will be shared at the March Commission meeting once preliminary harvest estimates have been obtained and population modeling exercises have been completed.

There is currently a small geographic area that technically does not reside in any elk hunting unit; this unit boundary modification will correct this oversight. In addition, Unit BHE-4HB was inadvertently excluded as a hunting unit in administrative rule.

APPROVE _____	MODIFY _____	REJECT _____	NO ACTION _____
----------------------	---------------------	---------------------	------------------------

Year	Licensed Hunters	Hunter Success	Bulls Harvested	Cows Harvested	Total Harvest
2017	1,581	66%	366	684	1,050
2018	1,124	64%	315	402	717
2019	1,108	62%	332	354	686
2020	926	63%	360	224	584
2021	954	66%	382	250	632

2021	"Any Elk"					"Antlerless Elk" (All Units Combined)				
Unit	Appl.1st Choice	Licensed Hunters	Harvest Success	Bulls Harvested	Cows Harvested	Appl.1st Choice	Licensed Hunters	Harvest Success	Bulls Harvested	Cows Harvested
H1	1,317	49	84%	35	6	40	15	82%	0	13
H2	8,500	241	91%	213	6	397	113	67%	5	71
H3	1,727	100	82%	80	2	102	273	44%	2	117
H4	83	20	70%	14	0	8	44	23%	0	10
H5	67	5	60%	3	0	NA	NA	NA	NA	NA
H7	343	20	95%	17	2	16	15	53%	0	8
H9	53	14	93%	11	2	3	45	40%	3	15

*2021 preliminary harvest data

DEPARTMENT RECOMMENDATION

Recommended changes from proposal: None.

DRAFT ADMINISTRATIVE RULE CHANGES

The following are proposed draft changes that are intended to incorporate the recommended changes adopted by the Commission.

41:06:26:01. Black Hills elk hunting season established -- Number and type of licenses -- Season dates. The Black Hills elk hunting season is open from one-half hour before sunrise to one-half hour after sunset each day of the season. No more than ~~450~~ 600 "any elk" licenses and ~~490~~ 1,200 "antlerless elk" licenses may be issued for the Black Hills elk hunting seasons are as follows:

- (1) Units BHE-H1A, BHE-H2A, BHE-H3A, BHE-H4A, BHE-H5A, and BHE-H7A are open from October 1 through October 31;
- (2) Units BHE-H1B, BHE-H2B, BHE-H2E, BHE-H4B, BHE-H7B, and BHE-H9B are open from October 15 through October 31 and from December 1 through December 16;
- (3) Units BHE-H2H, BHE-H3B, and BHE-H3E are open from October 15 through October 31;
- (4) Units BHE-H2C, BHE-H2F, BHE-H2I, BHE-H3C, and BHE-H3F are open from December 1 through December 16; and
- (5) Units BHE-H2D, BHE-H2G, BHE-H2J, BHE-H3D, and BHE-H3G are open from December 17 through December 31.

41:06:26:02. Open units. The following is a description of the open units for the Black Hills elk hunting season:

APPROVE _____ MODIFY _____ REJECT _____ NO ACTION _____

(9) Units BHE-H4A and BHE-H4B: those portions of Custer, Fall River, and Pennington Counties beginning at the junction of U.S. Highway 385 and the south boundary of Wind Cave National Park, then southerly along U.S. Highway 385 through Hot Springs and Maverick Junction to its junction with the Cheyenne River, then northeasterly along the Cheyenne River to its junction with Fall River County Road 6291 (South Buffalo Gap Road), then northerly along Fall River County Road 6291 to its junction with Custer County Road 101, then northerly along Custer County Road 101 to its junction with Custer County Road 656 (River Side Road) at Buffalo Gap, then easterly along Custer County Road 656 one-half mile to its junction with Custer County Road 17 (Beaver Valley Road), then northerly and easterly along Custer County Road 17 to its junction with Custer County Road 719 (South Fairburn Road), then northerly along Custer County Road 719 to its junction with Custer County Road 18 at Fairburn, then northerly along Custer County Road 18 to its junction with State Highway 79, then northerly along State Highway 79 to its junction with State Highway 40, then northwesterly along State Highway 40 to its junction with Pennington County Road 330 (Playhouse Road), then southerly along Pennington County Road 330 to its junction with U.S. Highway 16A, then southerly along U.S. Highway 16 to its junction with the north boundary of Custer State Park, then easterly along the Custer State Park boundary to its junction with the northeast corner of Custer State Park, then southerly along the east Custer State Park boundary and Wind Cave National Park boundary to the southeast corner of Wind Cave National Park, then westerly along the south boundary of Wind Cave National Park to its junction with U.S. Highway 385, the point of beginning;

(12) Units BHE-H9A and BHE-H9B: those portions of Custer and Pennington Counties within an area bounded as follows: beginning at the junction of State Highway 40 and State Highway 79 at Hermosa, then northerly along State Highway 79 to its junction with State Highway 44 in Rapid City, then westerly along State Highway 44 to its junction with ~~U.S. Highway 16~~ the Black Hills National Forest boundary, then ~~westerly~~ southerly along ~~U.S. Highway 16~~ the Black Hills National forest boundary to its junction with the South Rockerville Road, then southerly along the South Rockerville Road to its junction with State Highway 40, then easterly along State Highway 40 to its junction with State Highway 79 at Hermosa, the point of beginning.

RESIDENT/NONRESIDENT CRITERIA

Not applicable.

RECRUITMENT, RETENTION, REACTIVATION (R3) CRITERIA

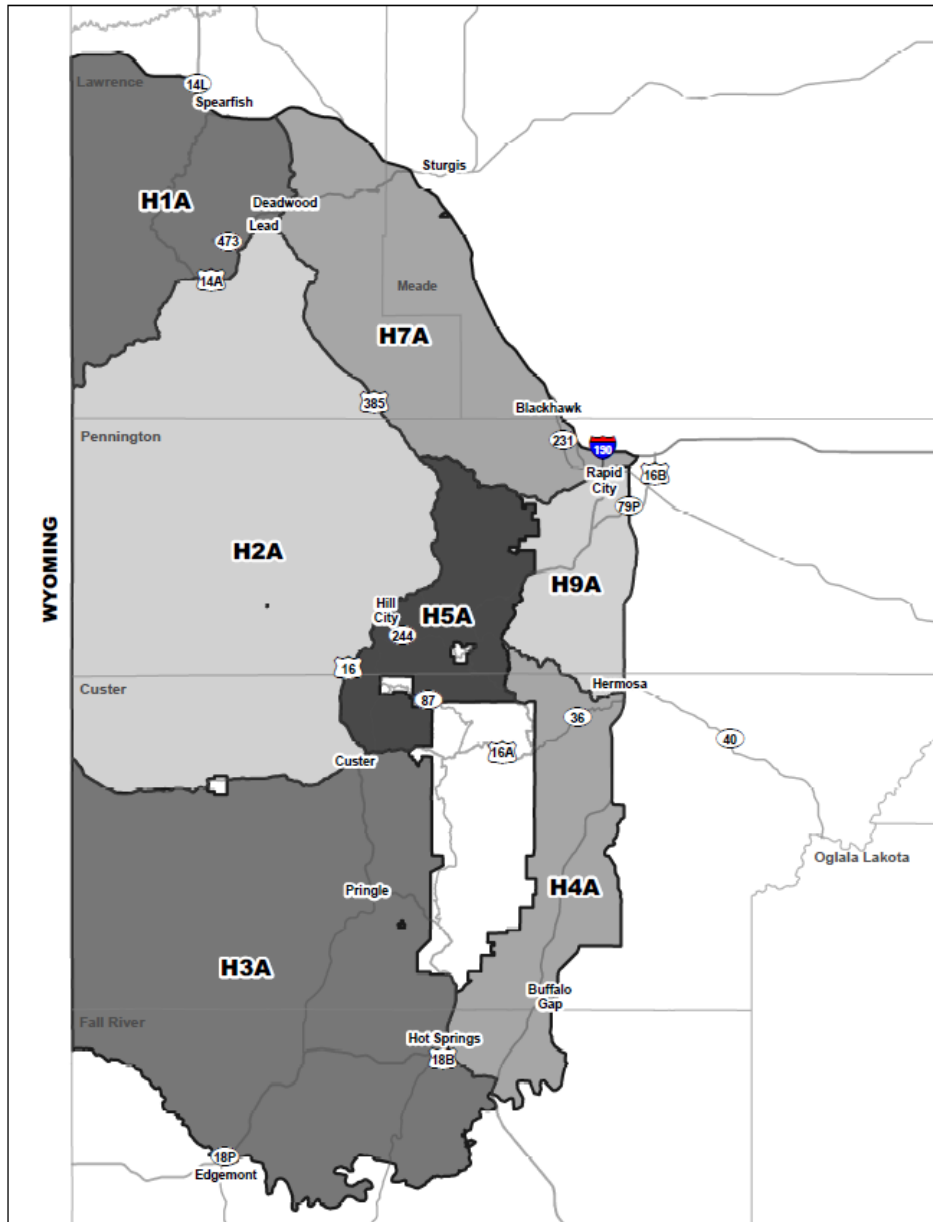
1. Does the regulation or fee inhibit a user's ability to participate? Not applicable.
2. Does the regulation increase the opportunity for new and existing users? Not applicable.
3. How does the regulation impact the next generation of hunters, anglers, trappers, and outdoor recreationists? Not applicable.
4. Does the regulation enhance the quality of life for current and future generations by getting families outdoors? Not applicable.

FISCAL IMPACT

Not applicable.

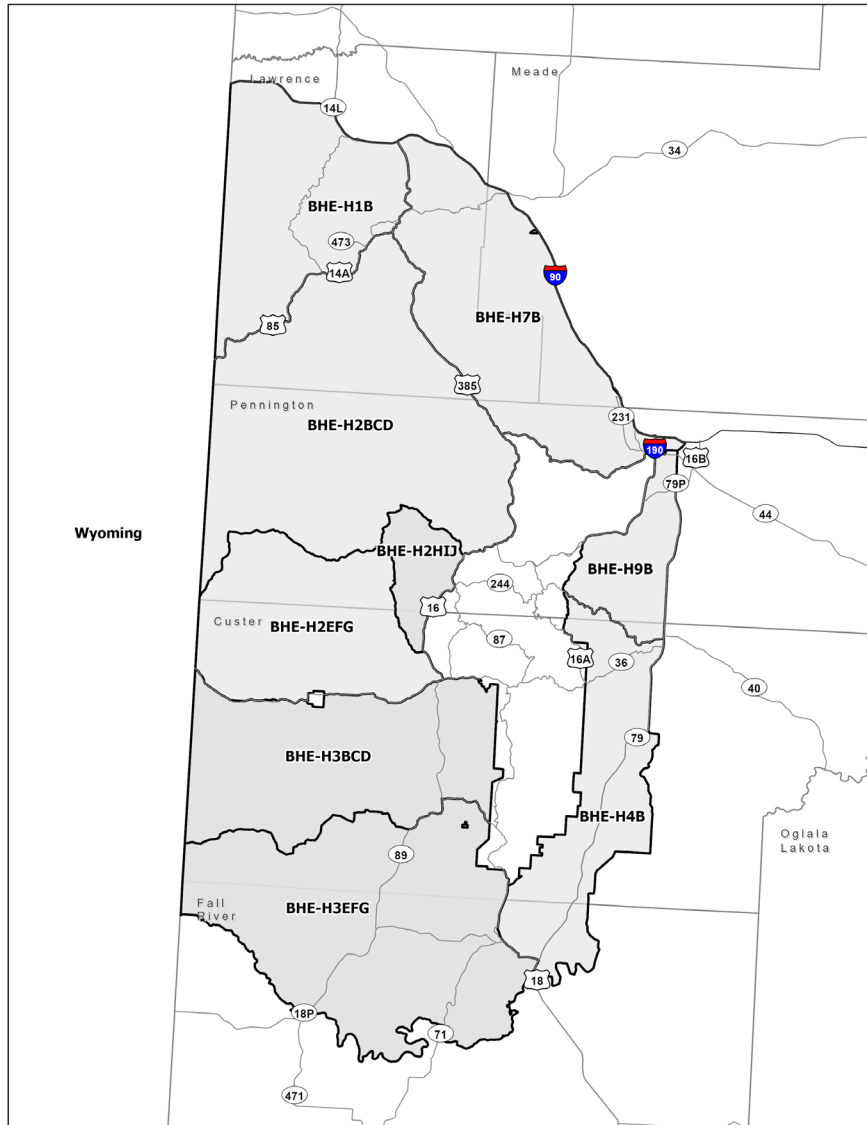
APPROVE _____	MODIFY _____	REJECT _____	NO ACTION _____
---------------	--------------	--------------	-----------------

BLACK HILLS “ANY” ELK UNITS



2022-2023	
Unit	Any Elk
H1A	60
H2A	290
H3A	120
H4A	20
H5A	5
H7A	25
H9A	15
TOTAL	535

BLACK HILLS "ANTLERLESS" ELK UNITS



2022-2023	
Unit	"Antlerless" Elk Licenses
H1A	
H1B	65
H2A	
H2B	50
H2C	50
H2D	
H2E	40
H2F	40
H2G	40
H2H	10
H2I	10
H2J	10
H3A	
H3B	45
H3C	45
H3D	45
H3E	60
H3F	60
H3G	60
H4A	
H4B	40
H5A	
H7A	
H7B	20
H9A	
H9B	40
TOTAL	730

GAME, FISH AND PARKS COMMISSION ACTION FINALIZATION

Prairie Elk Hunting Season Chapter 41:06:59

Commission Meeting Dates:	Proposal Public Hearing Finalization	January 4-5, 2022 April 7, 2022 April 7-8, 2022	Pierre Watertown Watertown
----------------------------------	--	---	----------------------------------

COMMISSION PROPOSAL

Duration of Proposal: 2022 and 2023 hunting seasons.

Season Dates:

Unit	2022 & 2023 Hunting Season Dates
9A	September 15 - October 31 AND December 1-31
11A	July 15 - August 31
11B	September 1 - October 15
11C	October 16 - November 30
11D	September 1 - October 31
11E	November 1 - December 31
11F	CLOSED
15A	September 1 - October 31 AND December 1-31
15B	December 1 - January 31
27A	October 1-31 AND December 1-31
35A, 35B	September 15 – October 31 AND December 1-31
35C, 35E	October 1 – November 15
35D, 35F	November 16 – December 31
49A	September 15 - October 31 AND December 1-31
WRA	September 1 - December 31

Open Area:

Unit 09A	Portions of Butte and Lawrence counties
Unit 11A-F	Bennett County and portions of Jackson and Mellette counties
Unit 15A and B	Portions of Butte and Lawrence counties
Unit 27A	Portions of Fall River County
Unit 35A, C and D	Harding County west of US Hwy. 85
Unit 35B, E and F	Harding County east of US Hwy. 85
Unit 49A	Portions of Meade County
Unit WRA	Those portions of South Dakota west of the Missouri River not associated with another prairie elk unit, excluding the Lower Brule Indian Reservation and Corson, Dewey, Oglala Lakota, Todd, and Ziebach counties.

Licenses: 102 “any elk” and 175 “antlerless elk” licenses (total of 277 licenses)

Requirements and Restrictions:

1. No person may possess more than one (1) elk license of any type in a year.
2. No more than two persons may submit applications together.
3. Except for landowner/operator preference applicants, no person who receives a license in the first drawing for this season shall be eligible to apply for a prairie elk license in first drawings for the next 9 years.
4. One-half of the licenses allocated in each unit are available for landowner/operator preference. One member of each qualifying landowner/operator household may apply every year.
5. Any elk that is harvested must be inspected by a Department representative within 24 hours after kill.

APPROVE _____	MODIFY _____	REJECT _____	NO ACTION _____
----------------------	---------------------	---------------------	------------------------

Proposed changes from last year:

1. Adjust the number of licenses available from 78 “any elk” and 178 “antlerless elk” licenses (total of 256 licenses) to no more than 150 “any elk” and 300 “antlerless elk” licenses (total of 450 licenses).
2. Modify Unit PRE-9A (see map).
3. Establish a new unit (PRE-49A) to include a portion of Meade County and season dates (see map).
4. Correct season dates in administrative rule for units PRE-11B, PRE-11C, PRE-11D, PRE-35A, and PRE-35B.
5. Modify prairie elk units 35A (Harding County west of US Hwy. 85) and 35B (Harding County east of US Hwy. 85) to the following:
 - a. Units 35A, 35C, and 35D: Harding County west of US Hwy. 85
 - b. Units 35B, 35E, and 35F: Harding County east of US Hwy. 85
6. Establish season dates for prairie elk units 35A, 35B, 35C, and 35D as follows:
 - a. Units 35A and 35B: September 15-October 31 AND December 1-31 (any elk licenses)
 - b. Units 35C and 35E: October 1 – November 15 (antlerless elk licenses)
 - c. Units 35D and 35F: November 16 – December 31 (antlerless elk licenses)

SUPPORTIVE INFORMATION

The proposed maximum number of elk licenses will be established in administrative rule and the GFP Commission via administrative action will determine specific number of licenses by tag types and allocation amongst hunting units.

Updated population objectives and the recommended number of licenses will be shared at the March Commission meeting once preliminary harvest estimates have been obtained and population modeling exercises have been completed.

Harvest strategies to meet landowner tolerance in Harding County warrants an increase in elk licenses, most noticeably, antlerless elk licenses. The establishment of new units with respective season dates is intended to manage hunter densities.

The proposed changes to prairie elk hunting unit boundaries and season date changes are to improve elk management on private land, simplify season dates, and distribute hunter densities.

DEPARTMENT RECOMMENDATION

Recommended changes from proposal: None.

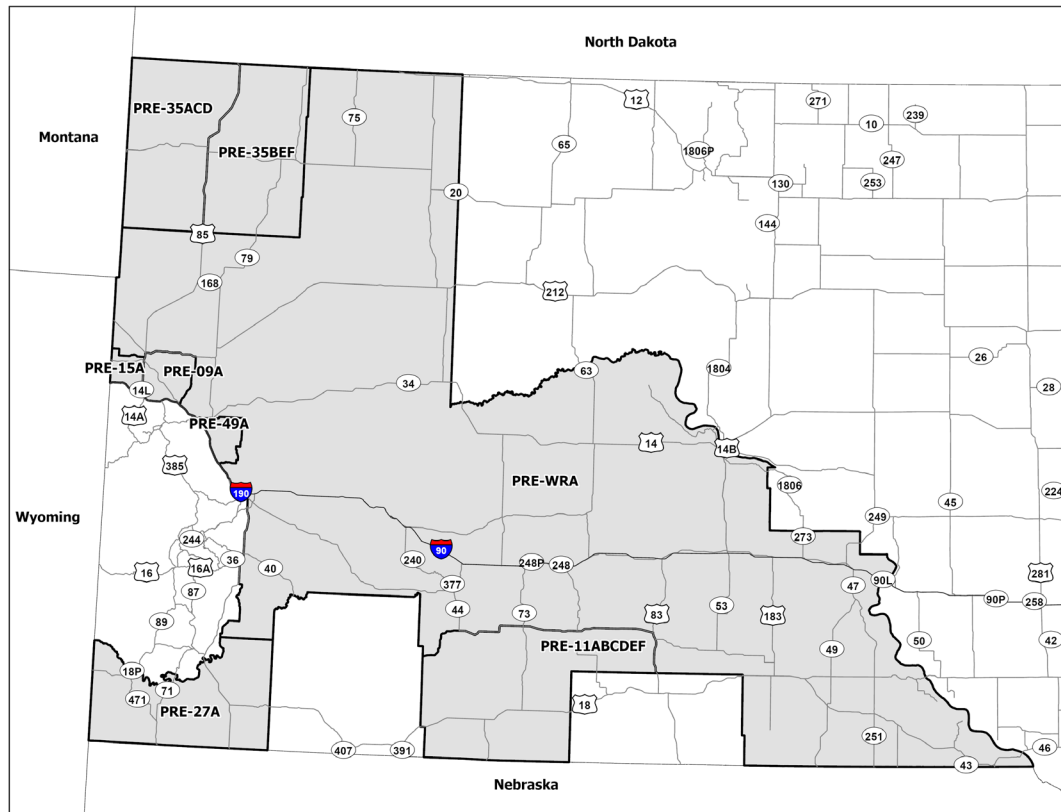
Year	Licensed Hunters	Hunter Success	Bulls Harvested	Cows Harvested
2016	148	40%	32	27
2017	149	54%	41	39
2018	139	79%	59	51
2019	140	65%	41	50
2020	251	57%	56	87

APPROVE _____ **MODIFY** _____ **REJECT** _____ **NO ACTION** _____

Unit/Type	Appl. 1st Choice	Licensed Hunters	Harvest Success	Bulls	Cows	Bull Calves	Cow Calves	Total Harvest	
09A-21	304	10	0%	0	0	0	0	0	
09A-23	20	15	50%	0	8	0	0	8	
11A-23	41	18	55%	0	10	0	0	10	
11B-21	450	16	71%	11	0	0	0	11	
11C-21	181	16	58%	8	1	0	0	9	
11D-23	75	31	73%	0	19	0	4	23	
11E-23	45	30	8%	0	0	2	0	2	
11F-23	23	30	Preliminary Data Not Available						
15A-21	104	8	20%	2	0	0	0	2	
15A-23	5	5	Preliminary Data Not Available						
27A-21	533	10	83%	8	0	0	0	8	
27A-23	26	10	83%	0	8	0	0	8	
35A-21	754	4	100%	4	0	0	0	4	
35A-23	24	8	100%	0	6	2	0	8	
35B-21	1,333	4	100%	4	0	0	0	4	
35B-23	69	12	75%	0	9	0	0	9	
WRA-21	881	10	71%	7	0	0	0	7	
WRA-23	44	20	27%	0	5	0	0	5	
Total	4,912	257	46.3%	45	66	4	4	119	

*2021 preliminary harvest data

Proposed Prairie Elk Units



APPROVE
 MODIFY
 REJECT
 NO ACTION

DRAFT ADMINISTRATIVE RULE CHANGES

The following are proposed draft changes that are intended to incorporate the recommended changes adopted by the Commission.

41:06:59:01. Prairie elk hunting season established -- Number and type of licenses available - - Season dates. The prairie elk hunting season is open from one-half hour before sunrise to one-half hour after sunset each day of the season. No more than ~~78~~ 150 "any elk" licenses and ~~478~~ 300 "antlerless elk" licenses may be issued for the prairie elk hunting season. The prairie elk hunting seasons are as follows:

- (1) Unit PRE-09A is open from September 15 through October 31 and from December 1 through December 31;
- (2) Unit PRE-11A is open from July 15 through August 31;
- (3) Unit PRE-11B is open from September 1 through ~~the Friday before the third Saturday in~~ October 15;
- (4) Unit PRE-11C is open from ~~the Saturday following the second Sunday of~~ October 16 through November 30;
- (5) Unit PRE-11D is open from September 1 through ~~December~~ October 31;
- (6) Unit PRE-11E is open from November 1 through December 31;
- (7) Unit PRE-11F is open from January 1 through the last day of February;
- (8) Unit PRE-15A is open from September 1 through October 31 and from December 1 through December 31;
- (9) Unit PRE-15B is open from December 1 through January 31;
- (10) Unit PRE-27A is open from October 1 through October 31 and from December 1 through December 31;
- (11) Unit PRE-35A is open from September 4 15 through October 31 and December 1 through December 31;
- (12) Unit PRE-35B is open from September 4 15 through October 31 and December 1 through December 31; ~~and~~
- (13) Unit PRE-35C is open from October 1 through November 15;
- (14) Unit PRE-35D is open from November 16 through December 31;
- (15) Unit PRE-35E is open from October 1 through November 15;
- (16) Unit PRE-35F is open from November 16 through December 31;
- (17) Unit PRE-49A is open from September 15 through October 31 and from December 1 through December 31; and
- (~~43~~ 18) Unit PRE-WRA is open from September 1 through December 31.

APPROVE _____	MODIFY _____	REJECT _____	NO ACTION _____
---------------	--------------	--------------	-----------------

41:06:59:02. Open units. The following is a description of the open units for the prairie elk hunting season:

(1) Unit PRE-09A: those portions of Lawrence and Butte Counties within a line beginning at the intersection of U.S. Highways 85 and 212, then east on Highway 212 to Whitewood Valley Road, then south on Whitewood Valley Road to Interstate 90, then west on Interstate 90 to U.S. Highway 85, then north on U.S. Highway 85 to the point of beginning; ~~and that portion of Meade County within a line beginning at the junction of Interstate 90 and Elk Creek Road, then east on Elk Creek Road to Ricard Road, then north on Ricard Road to Tilford Road, then east on Tilford Road to Middle Alkali Road, then north on Middle Alkali Road to Alkali Road, then west on Alkali Road to 133rd Avenue, then south on 133rd Avenue to 206th Street, then west on 206th Street to Lazelle Street, then west on Lazelle Street to Interstate 90 then south on Interstate 90 to the point of beginning;~~

(2) Unit PRE-11A: Bennett County, the portion of Jackson County south of State Highway 44 and Bureau of Indian Affairs Highway 2, and those portions of Mellette County south of State Highway 44 and west of U.S. Highway 83;

(3) Unit PRE-11B: Bennett County, the portion of Jackson County south of State Highway 44 and Bureau of Indian Affairs Highway 2, and those portions of Mellette County south of State Highway 44 and west of U.S. Highway 83;

(4) Unit PRE-11C: Bennett County, the portion of Jackson County south of State Highway 44 and Bureau of Indian Affairs Highway 2, and those portions of Mellette County south of State Highway 44 and west of U.S. Highway 83;

(5) Unit PRE-11D: Bennett County, the portion of Jackson County south of State Highway 44 and Bureau of Indian Affairs Highway 2, and those portions of Mellette County south of State Highway 44 and west of U.S. Highway 83;

(6) Unit PRE-11E: Bennett County, the portion of Jackson County south of State Highway 44 and Bureau of Indian Affairs Highway 2, and those portions of Mellette County south of State Highway 44 and west of U.S. Highway 83;

(7) Unit PRE-11F: Bennett County, the portion of Jackson County south of State Highway 44 and Bureau of Indian Affairs Highway 2, and those portions of Mellette County south of State Highway 44 and west of U.S. Highway 83;

(8) Unit PRE-15A: the portion of Butte County beginning at the junction of the South Dakota-Wyoming border, east on Sourdough Road to U.S. Highway 85, then south on U.S. Highway 85 to Interstate 90, then west on Interstate 90 to the South Dakota-Wyoming border, then north to the point of beginning;

(9) Unit PRE-15B: the portion of Butte County beginning at the junction of the South Dakota-Wyoming border, east on Sourdough Road to U.S. Highway 85, then south on U.S. Highway 85 to Interstate 90, then west on Interstate 90 to the South Dakota-Wyoming border, then north to the point of beginning;

(10) Unit PRE-27A: the portion of Fall River County not included in BHE-H3;

(11) Units PRE-35A, PRE-35C, and PRE-35D: the portion of Harding County west of U.S. Highway 85;

(12) Units PRE-35B, PRE-35E, and PRE-35F: the portion of Harding County east of U.S. Highway 85; and

APPROVE _____	MODIFY _____	REJECT _____	NO ACTION _____
---------------	--------------	--------------	-----------------

(13) Unit PRE-49A: the portion of Meade County within a line beginning at the junction of Interstate 90 and Elk Creek Road, then east on Elk Creek Road to Ricard Road, then north on Ricard Road to Tilford Road, then east on Tilford Road to Middle Alkalai Road, then north on Middle Alkalai Road to Alkalai Road, then west on Alkalai Road 133rd Avenue, then south on 133rd Avenue to 206th Street, then west on 206th Street to Lazelle Street to Interstate 90 then south on Interstate 90 to the point of beginning; and

~~(13)~~ (14) Unit PRE-WRA: the portion of the state west of the Missouri River not associated with another prairie elk unit, excluding the Lower Brule Indian Reservation and Corson, Dewey, Oglala Lakota, Todd, and Ziebach counties.

RESIDENT/NONRESIDENT CRITERIA

Not Applicable.

RECRUITMENT, RETENTION, REACTIVATION (R3) CRITERIA

1. Does the regulation or fee inhibit a user's ability to participate? No. The Department is recommending changes to prairie elk hunting unit boundaries and season dates to improve elk management on private land, simplify season dates, and distribute hunter densities.
2. Does the regulation increase the opportunity for new and existing users?
 - The proposed changes to license allocation would slightly increase elk hunting opportunities.
3. How does the regulation impact the next generation of hunters, anglers, trappers and outdoor recreationists? Increases opportunity for elk hunting in western South Dakota and simplifies prairie elk hunting units.
4. Does the regulation enhance the quality of life for current and future generations by getting families outdoors? Increases opportunity for elk hunting in western South Dakota.

FISCAL IMPACT

Minimal increase in license sales revenue.

APPROVE _____ **MODIFY** _____ **REJECT** _____ **NO ACTION** _____

GAME, FISH AND PARKS COMMISSION ADMINISTRATIVE ACTION

Elk Hunting Seasons – Hunting Unit License Allocations

Commission Meeting Dates: **Proposal**
 Public Hearing
 Finalization

January 4-5, 2022
April 7, 2022
April 7-8, 2022

Pierre
Watertown
Watertown

LICENSE ALLOCATION BY SEASONS AND UNITS

2021				2022-2023			
Black Hills Elk				Black Hills Elk			
Unit	Resident Licenses			Unit	Resident Licenses		
	Any Elk	Atl Elk			Any Elk	Atl Elk	
	21	23			21	23	
H1A	50			H1A	60		
H1B		15		H1B		65	
H2A	240			H2A	290		
H2B		25		H2B		50	
H2C				H2C		50	
H2D				H2D			
H2E		50		H2E		40	
H2F				H2F		40	
H2G				H2G		40	
H2H		5		H2H		10	
H2I		15		H2I		10	
H2J		15		H2J		10	
H3A	100			H3A	120		
H3B		30		H3B		45	
H3C		30		H3C		45	
H3D		30		H3D		45	
H3E		60		H3E		60	
H3F		60		H3F		60	
H3G		60		H3G		60	
H4A	20			H4A	20		
H4B		40		H4B		40	
H5A	5			H5A	5		
H7A	20			H7A	25		
H7B		15		H7B		20	
H9A	15			H9A	15		
H9B		40		H9B		40	
TOTAL	450	490	940	TOTAL	535	730	1,265
Contingency	NA	98	98	Contingency	NA	146	146
Archery Elk				Archery Elk			
Unit	Resident Licenses			Unit	Resident Licenses		
	Any Elk	Atl Elk			Any Elk	Atl Elk	
	21	23			21	23	
H1A	20	10		H1A	30	20	
H2A	80	40		H2A	100	40	
H3A	35	20		H3A	40	30	
H4A				H4A			
H5A	2			H5A	2		
H7A	10			H7A	10		
H9A				H9A			
TOTAL	147	70	217	TOTAL	182	90	272

2021				2022-2023			
Prairie Elk				Prairie Elk			
Unit	Resident Licenses			Unit	Resident Licenses		
	Any Elk	Atl Elk			Any Elk	Atl Elk	
	21	23			21	23	
9A	10	15		9A	4		
11A		18		11A		5	
11B	16			11B	16		
11C	16			11C	16		
11D		30		11D		30	
11E		30		11E		10	
11F		30		11F			
15A	8			15A	8		
15B		5		15B		5	
27A	10	10		27A	20	20	
35A	4	8		35A	10		
35B	4	12		35B	8		
35C				35C		15	
35D				35D		15	
35E				35E		20	
35F				35F		20	
49A				49A	10	15	
WRA	10	20		WRA	10	20	
TOTAL	78	178	256	TOTAL	102	175	277
Custer State Park				Custer State Park			
Season	Resident Licenses			Season	Resident Licenses		
	Any Elk	Atl Elk			Any Elk	Atl Elk	
	21	23			21	23	
CEE-CU1	3			CEE-CU1	4		
CUE-CU1	9			CUE-CU1	12		
TOTAL	12		12	TOTAL	16		16

GAME, FISH AND PARKS COMMISSION ACTION FINALIZATION

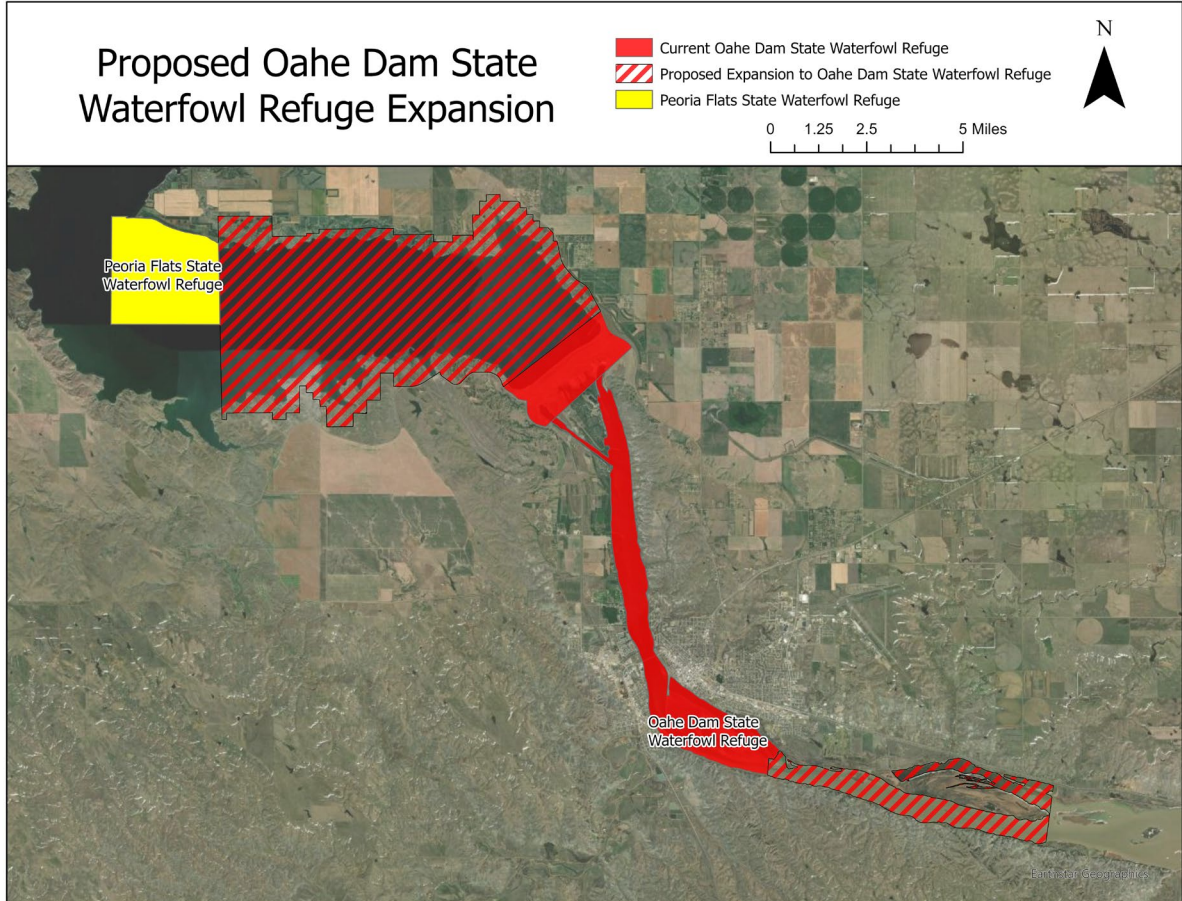
Refuges Chapter 41:05:02

Commission Meeting Dates:	Proposal	January 4-5, 2022	Pierre
	Public Hearing	April 7, 2022	Watertown
	Finalization	April 7-8, 2022	Watertown

COMMISSION PROPOSAL

Proposed changes from last year:

1. Modify the boundary of the Oahe Dam State Waterfowl Refuge by expanding the geographic area of the refuge to include the water of Lake Oahe and all lands owned and managed by the South Dakota Department of Game, Fish and Parks and the US Army Corps of Engineers lying south and west of S.D. Highway 1804 and north and east of S.D. Highway 1806 from the current refuge boundary upstream of Oahe Dam to the east boundary of Peoria Flats State Waterfowl Refuge and the water line from the downstream point of LaFramboise Island to the downstream point of Farm Island (see map).



DEPARTMENT RECOMMENDATION

Recommended changes from proposal:

1. To withdraw proposal and retain current refuge boundary.

APPROVE _____ MODIFY _____ REJECT _____ NO ACTION _____

SUPPORTIVE INFORMATION

The Commission denied a petition submitted by the South Dakota Migratory and Upland Gamebird Association as a component of the petition was to include a 50-year clause. The Commission, however, did develop a proposal that includes the addition to the Oahe Dam State Waterfowl Refuge as requested by the petitioner and believes the requested additions to the Oahe Dam State Waterfowl Refuge deserve an opportunity for public comment.

It is unknown if the proposed refuge change will enhance waterfowl hunting opportunities in the Pierre/Ft. Pierre area at a level greater than the current public hunting opportunities that would be taken away. In addition, the total area in the proposed refuge expansion and removal of public access for waterfowl hunting opportunities is 14,768 acres; a 444% increase in size that includes 11,704 acres of water and 3,064 acres of land. The proposed refuge expansion would remove shoreline hunting that includes 24.2 miles upstream and 24.5 miles downstream of Oahe Dam.

DRAFT ADMINISTRATIVE RULE CHANGES

The following are proposed draft changes that are intended to incorporate the recommended changes adopted by the Commission.

41:05:02:68. Missouri River refuges. Except as otherwise expressly provided in this section, the Missouri River refuges described in subdivisions (1) through (11), and (13) and (14) are closed to all waterfowl hunting from the opening day of the earliest waterfowl season through the last day of the Canada goose season and are open to duck hunting after the last day of the Canada goose season. The Missouri River refuges described in subdivision (12) and subdivisions (15) through (21), are closed to waterfowl hunting during all of the waterfowl seasons. The refuges, including all islands and bars within the refuges, are described as follows:

(12) Oahe Dam State Waterfowl Refuge comprises an area that includes the water of Lake Oahe and all lands owned and managed by the South Dakota Department of Game, Fish and Parks and the US Army Corps of Engineers lying south and west of S.D. Highway 1804 and north and east of S.D. Highway 1806 located east of the west section lines of sections 25 and 36 in township 112 north, range 81 west of the fifth principal meridian, Hughes County; the west section line of section 1 in township 111 north, range 81 west of the fifth principal meridian, Hughes County; the west section lines of sections 29 and 32 in township 6 north, range 30 east of the Black Hill meridian, Stanley County; and the west section line of section 5 in township 5 north, range 30 east of the Black Hills meridian, Stanley County, and continuing 3,000 feet downstream from the center of the top of the Oahe Dam grade; and an area within the water's edge from Oahe Dam to the downstream point of LaFramboise Farm Island. The wing dike, channel block 6, and the causeway located in section 9, township 5 north, range 31 east of the Black Hills meridian in Stanley County, commonly known as Echo Point, are closed to waterfowl hunting;

RESIDENT/NONRESIDENT CRITERIA

Not applicable.

RECRUITMENT, RETENTION, REACTIVATION (R3) CRITERIA

1. Does the regulation or fee inhibit a user's ability to participate? Yes, by not allowing waterfowl hunting on public water and lands in the expanded geographic area of the refuge.
2. Does the regulation increase the opportunity for new and existing users? No, it restricts waterfowl hunting on public water and lands in the expanded geographic area of the refuge with the desire of increasing waterfowl hunting in the Pierre/Ft. Pierre area.

APPROVE _____

MODIFY _____

REJECT _____

NO ACTION _____

3. How does the regulation impact the next generation of hunters, anglers, trappers, and outdoor recreationists? Restricts waterfowl hunting in the expanded geographic area of the refuge with the desire of increasing waterfowl hunting in the Pierre/Ft. Pierre area.
4. Does the regulation enhance the quality of life for current and future generations by getting families outdoors? Not applicable.

FISCAL IMPACT

Unknown.

APPROVE _____ MODIFY _____ REJECT _____ NO ACTION _____

GAME, FISH AND PARKS COMMISSION ACTION FINALIZATION

Bighorn Sheep Hunting Season Chapter 41:06:56

Commission Meeting Dates:	Proposal Public Hearing Finalization	January 4-5, 2022 April 7, 2022 April 7-8, 2022	Pierre Watertown Watertown
----------------------------------	---	--	---

COMMISSION PROPOSAL

Duration of Proposal: 2022 and 2023 hunting seasons

Season Dates: September 1 – December 31, 2022
September 1 – December 31, 2023

Open Area: Units 2, 4, and Custer State Park. See unit map for boundaries.

Licenses: 11 “ram bighorn sheep” licenses.

One of the licenses shall be an auction “ram bighorn sheep” license if a minimum of three total bighorn sheep licenses are allocated.

Requirements and Restrictions:

1. Except for the auction license, application for a license may be made by any resident hunter who has not been previously issued a bighorn sheep license in South Dakota.
2. Landowner - operator preference is not applicable to these licenses.
3. All licensees are required to attend an orientation meeting prior to the first day of hunting by the license holder at the regional office in Rapid City.
4. One bighorn sheep license shall be allocated as an auction license if a minimum of three bighorn licenses are approved by the Commission. The Commission shall determine in which unit or units the auction license is valid.
5. All successful hunters must submit their bighorn sheep to a conservation officer or Department representative for inspection and permanent marking within 24 hours after the kill.

Proposed changes from last year:

1. Increase the number of “ram bighorn sheep” licenses from 8 to 11.
2. Change the mandatory orientation meeting from “preceding the opening day of the season” to “preceding the first day of hunting by the license holder”.
3. Eliminate Unit BHS-ZZ1 for preference points.

DEPARTMENT RECOMMENDATION

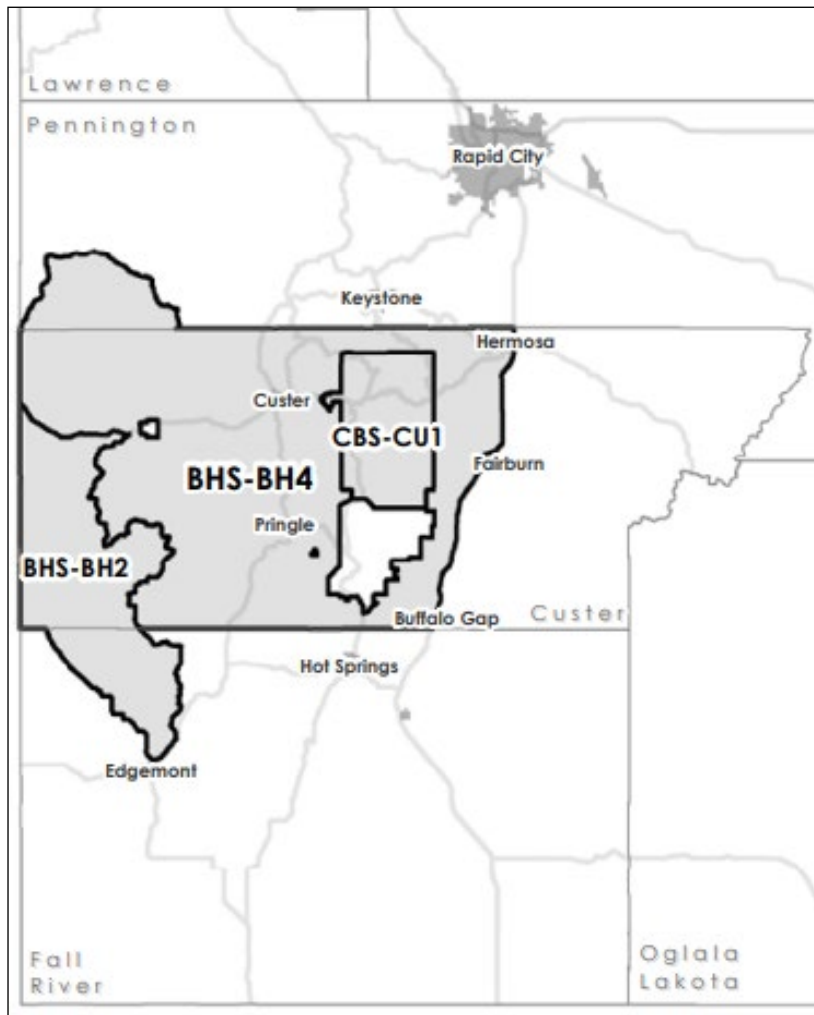
Recommended changes from proposal: None.

Allocation of Licenses by Unit

Unit	2020-21 Licenses	2022-23 Licenses
1	0	0
2	3	3
3	1	0
4	2	4
CSP	1	3

Proposed 2022 Hunting Units

APPROVE _____	MODIFY _____	REJECT _____	NO ACTION _____
----------------------	---------------------	---------------------	------------------------



SUPPORTIVE INFORMATION

Due to the recent *M. ovi* pneumonia outbreak in Unit 3, both the Department and Badlands National Park recommend issuing no licenses in this unit.

Based on the strong numbers of ram bighorn sheep across all age classes, the increase to the number of licenses being proposed in Custer State Park will not negatively affect the viewability of bighorn sheep for park visitors and will provide additional hunting opportunities.

Modifying the requirement for the mandatory hunter orientation will provide better customer service to those licensed hunters.

In addition to the licenses allocated by units above, the Commission recommends the auction license to be valid in Units 2, 4, and Custer State Park.

The removal of the BHS-ZZ1 unit (preference point only option) in the application will streamline the application process for applicants and better align with business rules in GFP's new licensing system. Hunters that want to purchase a preference point can still do so when preference points are available for purchase each year, from September 15 to December 15.

DRAFT ADMINISTRATIVE RULE CHANGES

APPROVE _____	MODIFY _____	REJECT _____	NO ACTION _____
---------------	--------------	--------------	-----------------

The following are proposed draft changes that are intended to incorporate the recommended changes adopted by the Commission.

41:06:56:03. Number and type of licenses. No more than ~~eight~~ 11 ram bighorn sheep licenses may be issued for the bighorn sheep hunting season. One bighorn sheep license may be issued for sale by auction pursuant to the procedures established in this chapter, valid for one ram bighorn sheep. ~~In Unit BHS-ZZ1, no bighorn sheep licenses may be issued. However, an applicant for this unit shall accrue a preference point as provided in § 41:06:01:09.~~

41:06:56:05. Mandatory briefing and check-in. All licensees are required to attend an orientation meeting preceding the ~~opening day of the season~~ first day of hunting by the license holder at the regional office in Rapid City. All successful hunters must submit their bighorn sheep to a designated department representative for inspection and permanent marking within 24 hours after the kill.

RESIDENT/NONRESIDENT CRITERIA

Not applicable.

RECRUITMENT, RETENTION, REACTIVATION (R3) CRITERIA

1. Does the regulation or fee inhibit a user's ability to participate? No.
2. Does the regulation increase the opportunity for new and existing users? Yes, by increasing the total number of bighorn sheep licenses.
3. How does the regulation impact the next generation of hunters, anglers, trappers, and outdoor recreationists? Not applicable.
4. Does the regulation enhance the quality of life for current and future generations by getting families outdoors? Not applicable.

FISCAL IMPACT

Minimal increase in license sales revenue.

APPROVE _____ MODIFY _____ REJECT _____ NO ACTION _____

GAME, FISH AND PARKS COMMISSION ACTION FINALIZATION

FISH LIMITS Chapters 41:07:03

Commission Meeting Dates:	Proposal	March 8	Pierre
	Public Hearing	April 7	Watertown
	Finalization	April 7-8	Watertown

COMMISSION PROPOSAL

Proposed changes:

Remove special regulations for walleye when fishing through the ice for the lower portion of Lake Francis Case, which include:

1. Requiring anglers to keep the first four walleye caught (PETITION)
2. Length limits (15-inch minimum and statewide one over 20-inches daily) are not in effect

Department recommended changes to proposal:

None

SUPPORTIVE INFORMATION

Current walleye regulations for the lower portion of Lake Francis Case, while fishing through the ice, include:

1. The first four walleyes caught must be kept
2. Length limits (15-inch minimum and statewide one over 20-inches daily) do not apply

A proposal was made by the commission at their January 2022 meeting, in response to a petition, to remove the requirement that the first four walleyes caught be kept, while fishing through the ice in the lower portion of Lake Francis Case. The department recommended a change to the original proposal, at the March commission meeting, to also remove the exemption to length limits in place while fishing through the ice, which was adopted by the commission.

If the proposed changes are adopted, the 15-inch minimum length limit would be in effect for all areas of Lake Francis Case from September 1 through June 30 and the one over 20-inches statewide regulation would be in effect year-round.

Specific regulations for walleye harvest, when fishing through the ice on the lower end of Lake Francis Case, were enacted in 2001 in response to public concern over high mortality of walleye caught from deep water and then released. The intent of the regulations was to reduce post-release mortalities by prohibiting release of walleye and limiting the number of walleyes caught during a fishing trip. There is evidence to support the idea that post-release mortality increases at deeper depths.

The special walleye harvest regulations for the lower portion of Lake Francis Case, when fishing through the ice, is the only case in the state where a regulation specifically requiring fish to be harvested exists because of potential post-release mortality. However, the same issue occurs at other locations during various times of the year, including in the lower portion of Lake Francis Case during the summer.

APPROVE _____ **MODIFY** _____ **REJECT** _____ **NO ACTION** _____

DRAFT ADMINISTRATIVE RULE CHANGES

The following are proposed draft changes that are intended to incorporate the recommended changes adopted by the Commission.

41:07:03:03. Daily, possession, and length limit restrictions on special management waters -- Additional restrictions described. Daily limit, possession limit, length limit, and additional restrictions on special management waters are described as follows:

(8) In Lakes Francis Case and Sharpe, the minimum length limit for walleye is 15 inches from September 1 through June 30. ~~However, in Lake Francis Case, length limits for walleye do not apply to any angler while fishing through the ice from the northern, east-west Gregory-Charles-Mix county line downstream to Fort Randall Dam, and such angler may not return or release to the water any walleye;~~

GAME, FISH AND PARKS COMMISSION ACTION FINALIZATION

Public Waters Chapter 41:04:02

Commission Meeting Dates:	Proposal	January 4-5, 2022	Pierre
	Public Hearing	April 7, 2022	Watertown
	Finalization	April 7-8, 2022	Watertown

COMMISSION PROPOSAL

Proposed changes from last year:

1. Remove no boating zones and allow for non-motorized watercraft within the Waubay National Wildlife Refuge and the Waubay State Game Bird Refuge.
2. Establish a no wake zone at a new boat ramp at Lake Poinsett State Recreation Area in Brookings County.
3. Modify the no wake zone at the Belle Fourche Reservoir in Butte County to include all boat ramps.
4. Modify to use existing safety zone definitions currently in rule (41:04:01:06).

SUPPORTIVE INFORMATION

GFP and the USFWS have been collaborating on ways to increase recreational opportunities, while still meeting the objectives of the refuge system. The USFWS Refuge System recently removed restrictions in order to provide increased outdoor recreational opportunities at Waubay National Wildlife Refuge that aligned with their mission and management responsibilities. Several administrative rules listed in 41:04:02:15 are prohibiting the USFWS from allowing these outdoor opportunities.

During the project development of the new Lake Poinsett Recreation Area east boat ramp the GFP held a public open house. During this open house residents of the South Lake Drive made a request of adding a "no wake" zone in the fronting waters of the new east boat ramp. This would give an added protection of this new ramp for loading and unloading of watercrafts. Due to the size of this new boat ramp, it will be the largest ramp on the lake serving the majority of Lake Poinsett's watercraft recreational users.

The establishment of a new boat ramp at the Belle Fourche Reservoir in Butte County warrants a modification to the current administrative rule to provide a buffer for structural and human safety concerns for all boat ramps.

DEPARTMENT RECOMMENDATION

Recommended changes from proposal: None.

DRAFT ADMINISTRATIVE RULE CHANGES

The following are proposed draft changes that are intended to incorporate the recommended changes adopted by the Commission.

41:04:02:18. Day County public water safety zones. Day County public water safety zones are as follows:

~~(3) The waters of Hillebrand's Lake are a "no boating zone";~~

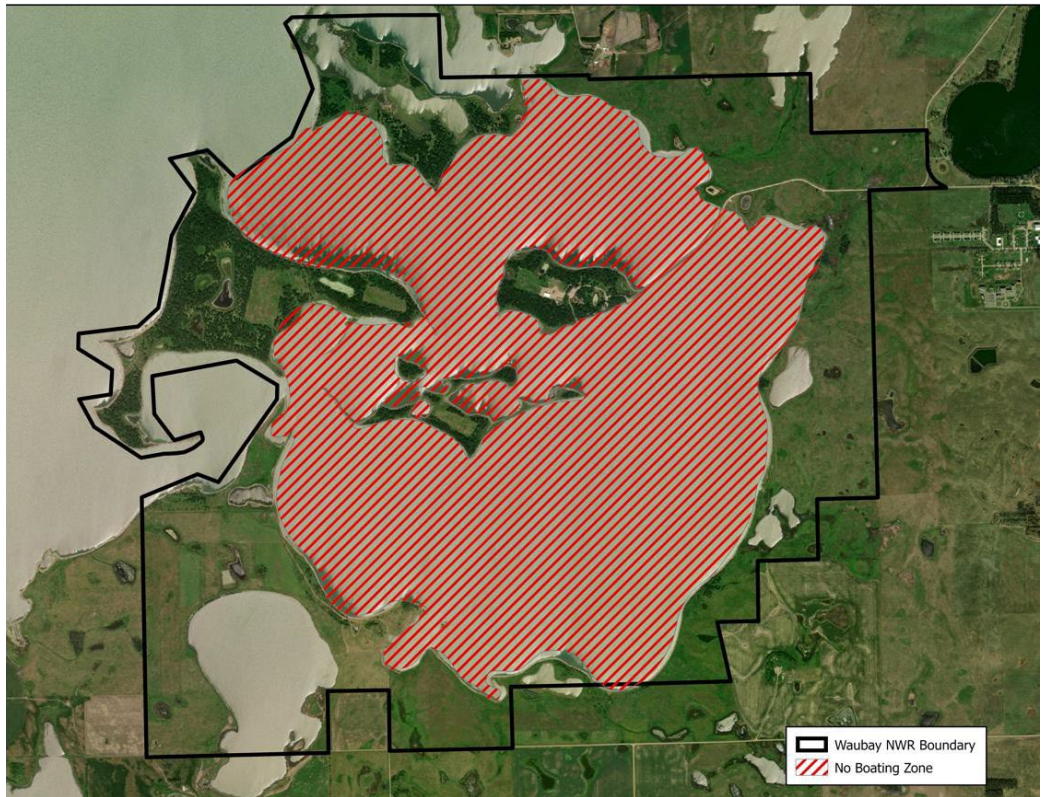
~~(4) The waters of Spring Lake are a "no boating zone";~~

~~(5) The waters of Swan Pond are a "no boating zone";~~

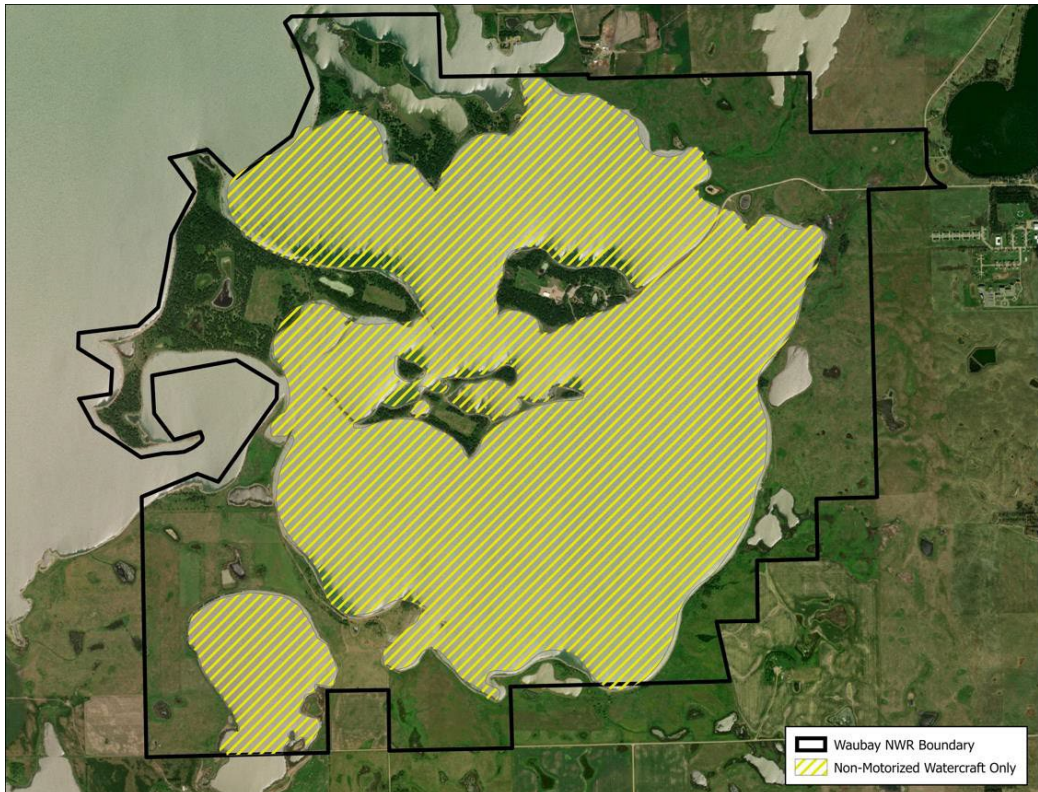
~~(3) The waters within the boundary of Waubay National Wildlife Refuge, including the waters within the Waubay State Game Bird Refuge, except for designated trails, are a "no motor vehicle zone" and a "no motors zone"; non-motorized watercraft are allowed;~~

APPROVE _____ MODIFY _____ REJECT _____ NO ACTION _____

Waubay National Wildlife Refuge—Current



Waubay National Wildlife Refuge—Proposed



APPROVE _____ **MODIFY** _____ **REJECT** _____ **NO ACTION** _____

41:04:02:05. Brookings County public water safety zones. Brookings County public water safety zones are as follows:

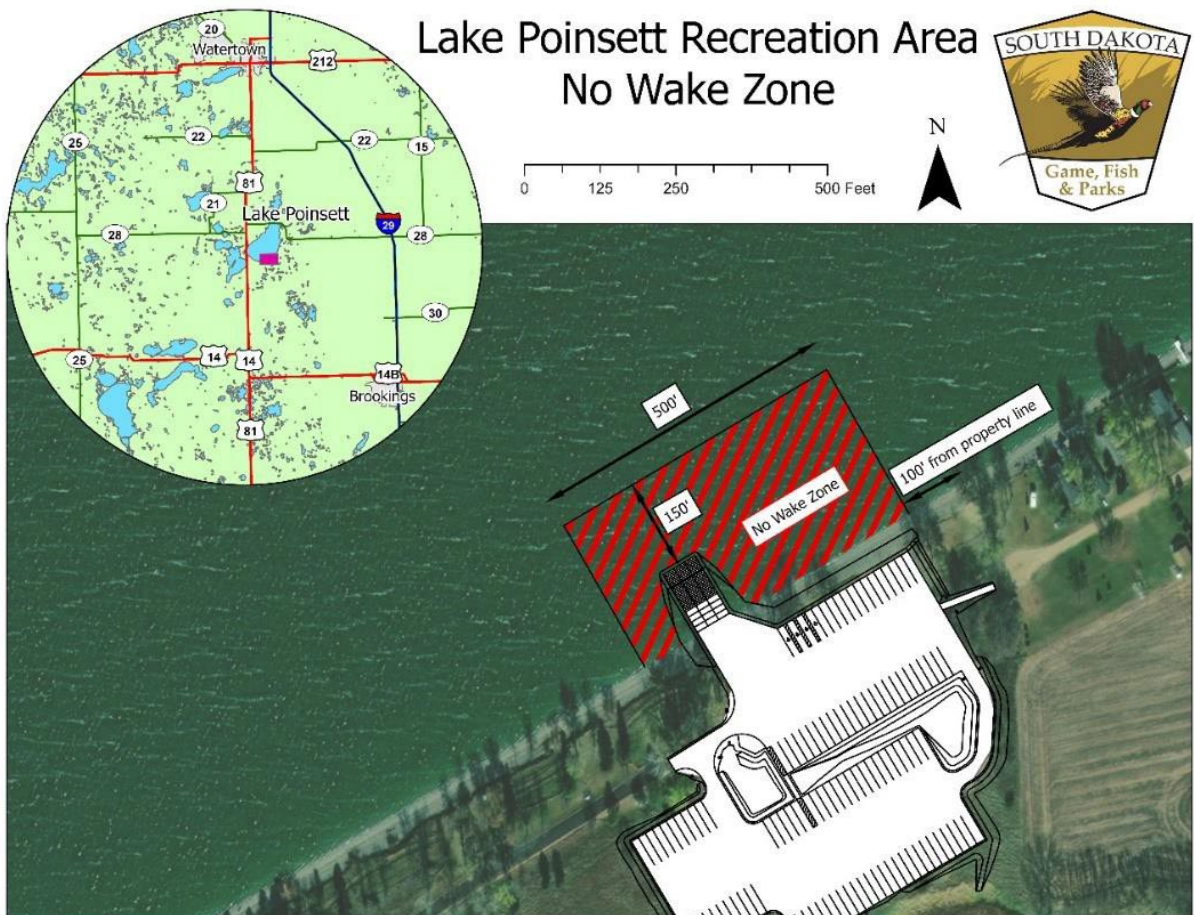
(1) Lake Poinsett:

(a) The waters fronting on that portion of the shoreline beginning approximately 1,800 feet west of the east property line marker located between sections 3 and 4 of the department public access area in the north half of section 4, township 112, range 52 west of the fifth principal meridian and extending approximately 700 feet westerly from this point are a "public swimming zone";

(b) The waters fronting on the waterfront area north of the main building of the Lake Poinsett Methodist Camp for a distance of 500 feet along the shoreline centering just north of the main building are a "public swimming zone";

(c) The waters fronting on that portion of Lake Poinsett State Recreation Area beginning at a point 500 feet west of the west boat ramp and extending 2,150 feet west are a "no wake zone";

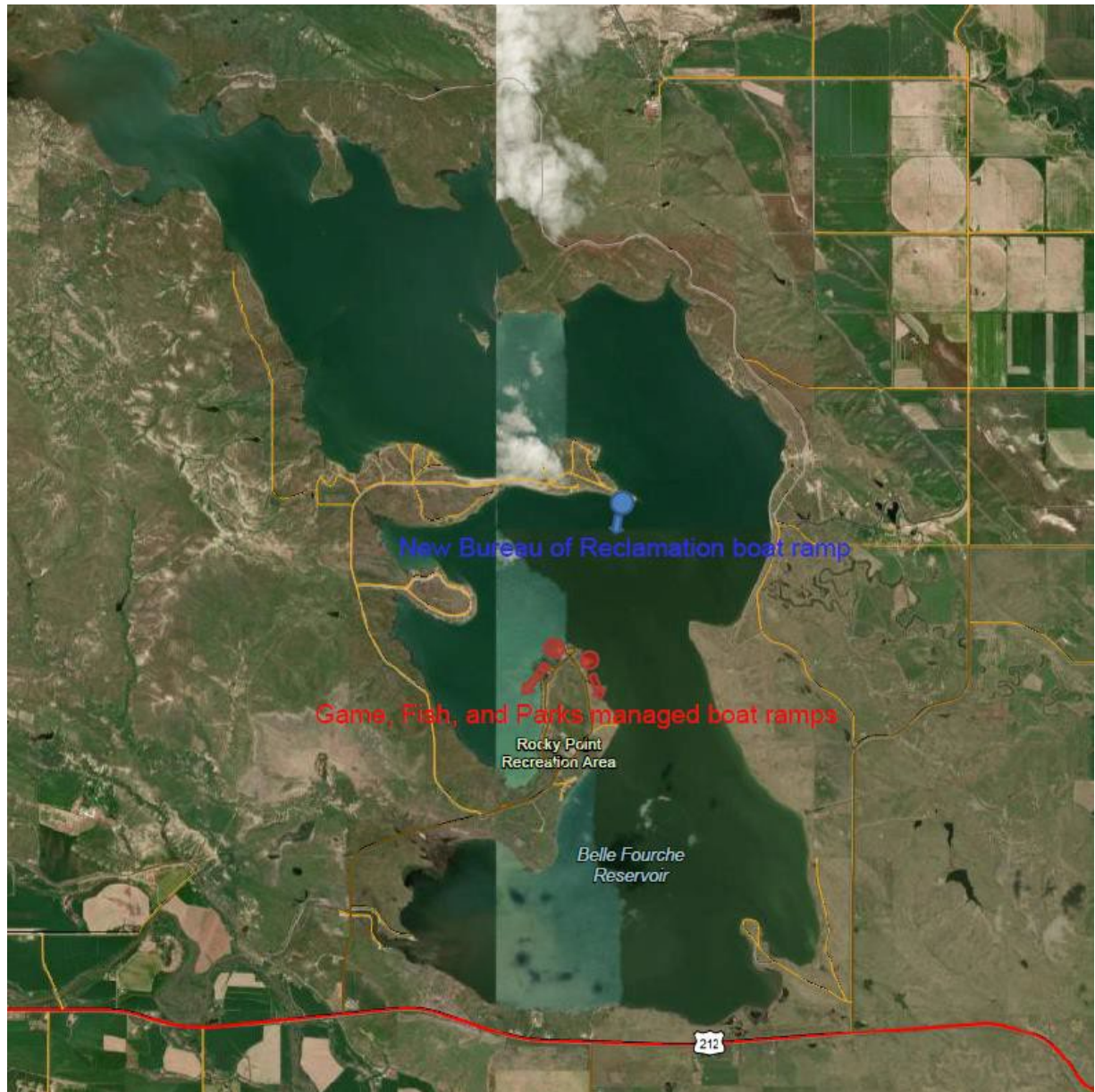
(d) The waters fronting on that portion of Lake Poinsett State Recreation Area beginning at a point 100 feet west of the east property boundary of the state recreation area and extending 500 feet west is a "no wake zone";



APPROVE	_____	MODIFY	_____	REJECT	_____	NO ACTION	_____
---------	-------	--------	-------	--------	-------	-----------	-------

41:04:02:09. Butte County public water safety zones. Butte County public water safety zones are as follows:

- (1) The waters within a 300-foot radius of the boat ramps located in Rocky Point Recreation Area on Belle Fourche Reservoir are a "no wake zone";



APPROVE _____ MODIFY _____ REJECT _____ NO ACTION _____

RESIDENT/NONRESIDENT CRITERIA

1. The Issue
 - The USFWS Refuge System recently removed restrictions in order to provide increased outdoor recreational opportunities within their mission and management responsibilities. State administrative rules are currently prohibiting the USFWS from allowing these outdoor opportunities.
 - Currently state law prohibits wake speed from motorized watercraft within 150 feet from docks and other requirements. The park will also move the current courtesy dock to the east side of this ramp within the offset that correlates to the parking lot. This rule will allow GFP to visibly mark the 150' barrier from the docks and raise boater awareness and increase safety.
2. Historical Considerations
 - Until recently, these areas within Waubay National Wildlife Refuge were closed to the above-described activities.
 - This is a new development location for the state recreation area boat launch facility.
3. Biological Considerations
 - Not applicable.
4. Social Considerations
 - The park held a public open house describing the project and details. The local homeowners requested a No Wake Zone to aid in slowing down boat traffic on their way to a busy boat launch.
5. Financial considerations
 - Not applicable.

RECRUITMENT, RETENTION, REACTIVATION (R3) CRITERIA

1. Does the regulation or fee inhibit a user's ability to participate? No.
2. Does the regulation increase the opportunity for new and existing users?
 - Yes, it provides recreational opportunities on waters within Waubay National Wildlife Refuge boundary for those using non-motorized watercraft in a new area.
 - No for changes to Lake Poinsett State Recreation Area.
3. How does the regulation impact the next generation of hunters, anglers, trappers, and outdoor recreationists?
 - Waubay National Wildlife Refuge: Provides recreational opportunities for those using non-motorized boats, canoes, and kayaks in a new area.
 - Lake Poinsett State Recreation Area: Visibly marking the 150-foot regulation will educate more recreationalists.
4. Does the regulation enhance the quality of life for current and future generations by getting families outdoors?
 - Yes. It would allow families to use non-motorized watercraft.
 - Yes. A more organized boat launch experience will promote multiple use and recreation and respect.

FISCAL IMPACT

Not applicable.

APPROVE _____ **MODIFY** _____ **REJECT** _____ **NO ACTION** _____

GAME, FISH AND PARKS COMMISSION ACTION FINALIZATION

License Agents Chapter 41:02:01

Commission Meeting Dates:	Proposal	January 4-5, 2022	Pierre
	Public Hearing	April 7, 2022	Watertown
	Finalization	April 7-8, 2022	Watertown

COMMISSION PROPOSAL

Proposed changes from last year:

1. Modify two administrative rules to align new business practices with GFP's new licensing system and requirements.
 - a. Adjust electronic ACH transfers, processes, and timeframe for payments
 - b. Remove the use of Emergency Authorization books

DEPARTMENT RECOMMENDATION

Recommended changes from proposal: None.

SUPPORTIVE INFORMATION

GFP will be launching the new licensing system on December 15, 2021. Once this occurs, license agents will be required to work within new business practices (i.e. electronic ACH transfers and different timeframes when the electronic money sweeps occur) to continue to be a license agent for GFP. License agents serve an important role for selling licenses on behalf of GFP as well as providing hunters with the ability to purchase hunting and fishing licenses outside normal business hours that GFP offices are open. As technology advances, the ability to sell paper hunting and fishing licenses is no longer needed. Customers will be able to purchase licenses online (through GFP's licensing website) or by visiting a license agent or by calling GFP's call center.

DRAFT ADMINISTRATIVE RULE CHANGES

The following are proposed draft changes that are intended to incorporate the recommended changes adopted by the Commission.

41:02:01:07. Licensing agents report of sales -- Fees remitted. Any licensing agent appointed by the department shall be responsible to the department for payment of all license fees the agent collects on behalf of the department. The department shall produce and distribute invoices for the previous month and shall be made available in an electronic system by the first of each month. ~~for the previous month's recorded sales to each licensing agent no later than the fifteenth day of each month.~~ The department shall make electronic fund sweeps for monthly sales on the 25th day of each month or the next following business day. ~~Each licensing agent shall remit payment by the tenth day of the month following the invoice date.~~ For the purposes of this chapter, the term, license fees, means all fees collected by a licensing agent in connection with the sale of hunting, fishing, and trapping licenses, except for that portion of the fees which are established pursuant to SDCL 41-6-66.1.

APPROVE _____ MODIFY _____ REJECT _____ NO ACTION _____

41:02:01:12. Emergency authorization books. ~~Each licensing agent using a book containing emergency authorization licenses shall legibly record all information that is requested on the license. The agent shall enter all emergency authorization licenses into the department's licensing system, either online or through the department's licensing call center, no later than 48 hours after issuing an emergency authorization license. An emergency authorization license book shall be returned to the department's licensing office within seven days following issuance of the last license in the book. A licensing agent shall account for each emergency authorization license at the end of the license season or at the time of termination of licensing agent status. A licensing agent is responsible for any emergency authorization license issued to the agent. The department shall assess an agent \$110 for each missing emergency authorization license. If any missing emergency authorization license is recovered by the agent after the agent has paid \$110 for the missing license, the licensing agent may return the license to the department's licensing office and obtain a full refund.~~ Repealed.

RESIDENT/NONRESIDENT CRITERIA

1. The Issue
 - N/A
2. Historical Considerations
 - N/A
3. Biological Considerations
 - N/A
4. Social Considerations
 - N/A
5. Financial considerations
 - N/A

RECRUITMENT, RETENTION, REACTIVATION (R3) CRITERIA

1. Does the regulation or fee inhibit a user's ability to participate? No.
2. Does the regulation increase the opportunity for new and existing users? N/A
3. How does the regulation impact the next generation of hunters, anglers, trappers, and outdoor recreationists? N/A
4. Does the regulation enhance the quality of life for current and future generations by getting families outdoors? N/A

FISCAL IMPACT

Not applicable.

APPROVE _____ **MODIFY** _____ **REJECT** _____ **NO ACTION** _____

**GAME, FISH AND PARKS COMMISSION ACTION
FINALIZATION**

Camping Reservations – Cancellation fees

Chapters 41:03:04:05:01

Commission Meeting Dates:	Proposal	March 4, 2022	Pierre
	Public Hearing	April 7, 2022	Watertown
	Finalization	April 7-8, 2022	Watertown

DEPARTMENT RECOMMENDATION

The proposed change allows for cancellation of campsites and lodging facilities without fee for a period of time after a reservation is made. After that period has elapsed, a fee of one-half of the first night's camping or lodging fees will be assessed for both types of overnight use.

This rule proposal helps simplify cancellation policies and associated fees by providing one cancellation procedure for campsites, and one for lodging facilities and Custer State Park French Creek Horse Camp.

SUPPORTIVE INFORMATION

The Department's cancellation policy was developed at a time of lower demand for camping and lodging facilities, and the ability to resell those facilities was more difficult. The current procedure is to assess a cancellation fee of one-night's camping or \$25 for cabins/lodges effective immediately after the reservation is made.

With the increased demand for camping and lodging facilities, the ability to fill those vacancies left by cancellations is much more likely. This change will also help the Department be more consistent with industry cancellation standards, and allow more flexibility of users to cancel a reservation without penalty due to unforeseen circumstances.

DRAFT ADMINISTRATIVE RULE CHANGES

41:03:04:05.01. Campsite reservations -- Payment of camping fees -- Cancellation

fees. Nonprofit youth groups may reserve a designated group camping area for up to 14 consecutive nights.

A person may reserve an available campsite at any state park, recreation area, or lakeside use area for up to 14 consecutive nights. After the person has occupied the campsite for 14 consecutive nights, the person shall remove the person's camper unit from the state park, recreational area, or lake side use area, by check-out time the next day, for at least one night, before reserving that site, or another site, at that location.

Camping fees set in subdivisions 41:03:04:03(1) through (3), (7) through (13), and (15) must be paid for the entire duration of a camper's anticipated stay at the time the reservation is made. A person who cancels a reservation for a campsite through the park reservation center or who cancels a reservation for a campsite ~~after~~ within 7 days of or after arrival at the park shall pay one-half of one night's camping fee for each campsite reserved. A person who cancels a reservation for a camping cabin, ~~modern cabin, lodge, suite, or rent-a-camper, or a campsite at French Creek Horse Camp in Custer State Park~~ through the park reservation center within 30 days of or after arrival at the park shall pay a \$25 cancellation fee of one-half of one night's rental or camping fee. ~~A person who cancels or shortens a reservation for a lodge more than 30 days ahead of the scheduled arrival date shall be charged a \$25 cancellation fee. A person who cancels or shortens a reservation for a lodge 30 days or fewer ahead of the scheduled arrival date shall be charged a \$25 cancellation fee for every night cancelled.~~ The department shall refund all other fees for unused days of camping or unused lodging fees except nonrefundable reservation fees.

GAME, FISH AND PARKS COMMISSION ACTION FINALIZATION

A person who is a resident of this state shall pay an additional reservation fee of \$2 for a reservation made through the park reservation center. A person who is not a resident of this state shall pay an additional reservation fee of \$7.70 for a reservation made online and shall pay \$9.70 for a reservation made through the park reservation center. The reservation fee is nonrefundable and is payable in advance.

~~At French Creek Horse Camp in Custer State Park, a person who cancels a reservation through the park reservation center shall pay one night's camping fee for each campsite reserved if the cancellation is received 30 days or more before arrival. Fifty percent of the fees shall be refunded if the cancellation is received fewer than 30 days but more than 15 days before arrival, and no refunds if the cancellation is received 15 or fewer days before arrival.~~

Source: 6 SDR 96, effective April 1, 1980; 10 SDR 76, 10 SDR 102, effective July 1, 1984; 10 SDR 120, effective July 1, 1984; 12 SDR 186, effective May 28, 1986; 13 SDR 192, effective June 22, 1987; 14 SDR 114, effective March 9, 1988; 15 SDR 139, effective March 20, 1989; 16 SDR 135, effective February 18, 1990; 17 SDR 78, effective December 10, 1990; 19 SDR 82, effective December 7, 1992; 21 SDR 102, effective December 8, 1994; 21 SDR 148, effective March 6, 1995; 22 SDR 82, effective December 10, 1995; 23 SDR 87, effective December 3, 1996; 25 SDR 108, effective February 28, 1999; 28 SDR 150, effective May 7, 2002; 32 SDR 109, effective December 27, 2005; 35 SDR 184, effective February 2, 2009; 42 SDR 97, effective January 5, 2016; 43 SDR 31, effective September 14, 2016; 46 SDR 74, effective December 2, 2019.

General Authority: SDCL [41-17-1.1\(1\)\(7\)](#).

Law Implemented: SDCL [41-2-24](#), [41-17-1.1\(1\)\(7\)](#).

RESIDENT/NONRESIDENT CRITERIA

1. The Issue
 - Why make the change, what are the change alternatives, how will public/stakeholder input be solicited, and how will the change be evaluated if implemented? The Department heard many complaints about the cancellation procedure, especially during periods of high COVID transmission. This change will affect residents and non-residents equally. However, the non-refundable non-resident reservation fee and call center fees will still apply.
2. Historical Considerations
 - Not applicable
3. Biological Considerations
 - Not applicable.
4. Social Considerations
 - Not applicable.
5. Financial considerations
 - Not applicable.

RECRUITMENT, RETENTION, REACTIVATION (R3) CRITERIA

1. Does the regulation or fee inhibit a user's ability to participate? No.
2. Does the regulation increase the opportunity for new and existing users? Yes. It lowers the amount of risk for users to book a campsite for a lodging facility according to the 90 day window.

**GAME, FISH AND PARKS COMMISSION ACTION
FINALIZATION**

3. How does the regulation impact the next generation of hunters, anglers, trappers, and outdoor recreationists? It provides more flexibility for people that experience more uncertainty in their schedule.
4. Does the regulation enhance the quality of life for current and future generations by getting families outdoors? Yes.

FISCAL IMPACT

APPROVE **MODIFY** **REJECT** **NO ACTION**

GAME, FISH AND PARKS COMMISSION ACTION PROPOSAL

Public Waters/Fishing Seasons

Chapter 41:04:02 and 41:07:02

Commission Meeting Dates:	Proposal	March 3-4, 2002	Pierre
	Public Hearing	May 5, 2022	Custer State Park
	Finalization	May 5-6, 2022	Custer State Park

COMMISSION PROPOSAL

Proposed changes from last year:

1. Modify applicable dates and the area included in "no discharge of a firearm from a boat" of Indian Springs and Antelope Lakes in Clark County.
2. Modify applicable dates and the area included in the closure of fishing from a boat of Indian Springs and Antelope Lakes in Clark County.

SUPPORTIVE INFORMATION

In 2017, HB1001 tasked the SD Game Fish and Parks to work on agreements with landowners on non-meandered water issues. One such agreement was with a landowner on Indian Springs Lake in Clark County. The current rule was put into place in 2018 after discussions with a landowner who owned most of the flooded private property in the Indian Springs basin. It was the opportunity to balance the request of the landowner and the public recreational use of Indian Springs Lake.

Landownership has changed hands since the original agreement. Due to water levels increasing in the area, the new landowner has requested to simplify the boundaries of the current area closed to "discharging a firearm or fishing from a boat" on Indian Springs to also include the waters of Antelope Lake. Antelope Lake is currently designated as a State Waterfowl Refuge. As part of this request, the landowner also agreed to change the start date in the current rules 41:04:02:12b and 41:07:02:01b to October 20th, giving sportsmen and women an additional 10 days in the fall to hunt and fish from a boat while allowing the water to be open to public recreational use during the winter, spring, and summer months. This date would also align with boating regulations on other state refuges.

Indian Springs Lake is a non-meandered body of water thus is subject to landowner request to close it to recreational use if so desires. By GFP staff working with the current landowners, Indian Springs Lake can remain open to public recreational activities with minimal restrictions for 2 months vs being shut down year-round.

DEPARTMENT RECOMMENDATION

Recommended changes from proposal: None.

DRAFT ADMINISTRATIVE RULE CHANGES

The following are proposed draft changes that are intended to incorporate the recommended changes adopted by the Commission.

41:04:02:12. Clark County public water safety zones. The Clark County public water safety zones are as follows:

(2) The waters of Indian Springs and Antelope Lake west of a line from 42750 174th Street to 42750 177th Street to 424th avenue are designated as a "no discharge of a firearm from a boat" from October 20 through December 31.

41:07:02:01. Inland waters. Except as provided in § 41:07:01:05, all species of fish except those species listed in §§ 41:10:02:05 and 41:10:02:06 may be caught, taken, or killed by hook and line year-round within inland waters.

APPROVE _____	MODIFY _____	REJECT _____	NO ACTION _____
----------------------	---------------------	---------------------	------------------------

The following restrictions apply to inland waters:

(2) In Clark County the waters of Indian Springs and Antelope Lake west of a line from 42750 174th street to 42750 177th street to 424th avenue is closed to fishing from a boat from October 4⁰ 20 through December 31.



South Dakota Department of Game, Fish and Parks

Indian Springs / Antelope Lake Boundaries



Current Boundary Proposed Boundary Meandered Water Line Waterfowl Refuge

APPROVE _____	MODIFY _____	REJECT _____	NO ACTION _____
---------------	--------------	--------------	-----------------

RESIDENT/NONRESIDENT CRITERIA

1. The Issue
 - None
2. Historical Considerations
 - None
3. Biological Considerations
 - None
4. Social Considerations
 - None
5. Financial considerations
 - None

RECRUITMENT, RETENTION, REACTIVATION (R3) CRITERIA

1. Does the regulation or fee inhibit a user's ability to participate?
 - Yes. It will limit the fishing from a boat and discharging of a firearm from a boat from October 20 to December 31.
2. Does the regulation increase the opportunity for new and existing users?
 - Yes. This rule would allow for an additional 10 days to fish from a boat or discharge of a firearm from a boat in the fall. It will also ensure most of Indian Springs Lake will remain open to ice, spring, and summer fishing.
3. How does the regulation impact the next generation of hunters, anglers, trappers, and outdoor recreationists?
 - Indian Springs Lake is close to communities like Clark and Watertown. Indian Springs Lake remaining open allows an excellent outdoor recreational opportunity.
4. Does the regulation enhance the quality of life for current and future generations by getting families outdoors?
 - Yes. It would allow more time for recreational use of Indian Springs Lake.

FISCAL IMPACT

Making this change and adding 10 additional fishing days on Indian Springs could have significant fiscal impact to the local businesses when the fishing is good.

APPROVE _____ MODIFY _____ REJECT _____ NO ACTION _____

GAME, FISH AND PARKS COMMISSION ACTION PROPOSAL

Duck Hunting Season

Chapter 41:06:16

Commission Meeting Dates:	Proposal	March 3-4, 2022	Pierre
	Public Hearing	May 5, 2022	Custer State Park
	Finalization	May 5-6, 2022	Custer State Park

COMMISSION PROPOSAL

Duration of Proposal: 2022-23 hunting season

Season Dates and Open Areas:

High Plains Zone:	October 8, 2022 – January 12, 2023
Low Plains North & Low Plains Middle Zone:	September 24 – December 6, 2022
Low Plains South Zone:	October 22, 2022 – January 3, 2023

Daily Limits:

Tier 1 Option (Traditional Daily Bag Limit)

- Ducks: 6 The duck daily limit (including mergansers) may be comprised of no more than: 5 mallards (which may include no more than 2 hens), 3 wood ducks, 2 redheads, 2 canvasbacks, 1 pintail and 1 scaup.
- 2 Bonus blue-winged teal (first 16 days of the season only)
- Low Plains North & Low Plains Middle Zones: September 24 – October 9, 2022
- Low Plains South Zone: October 22 – November 6, 2022
- High Plains Zone: October 8 – 23, 2022

Coots: 15

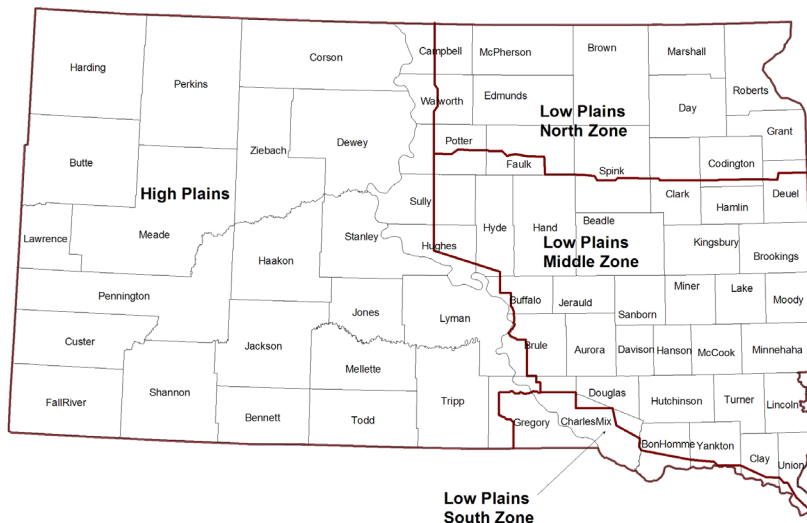
Tier 2 Option (3-Splash Daily Bag Limit)

Ducks: 3 The duck daily limit (including mergansers) may be comprised of three of any species or gender.

Coots: 15

Possession Limits: Three times the daily bag limits.

Duck Hunting Zones



APPROVE _____	MODIFY _____	REJECT _____	NO ACTION _____
----------------------	---------------------	---------------------	------------------------

Proposed changes from last year:

1. Remove daily bag limit of 5 mergansers (including 2 hooded mergansers) and include all mergansers in the normal duck daily bag limit.
2. Remove the possession limit of mergansers and include all mergansers in the normal duck possession limit.
3. Remove the ability to transfer certain nonresident licenses after a specific date.

SUPPORTIVE INFORMATION

The proposed change cleans up administrative rules for the implementation of the experimental options available to duck hunters. The allowance to transfer certain nonresident licenses after a specific date is unnecessarily complex and creates difficulties with the administration of licenses as well as creates confusion with hunters.

Year	Resident Hunters	Nonresident Hunters	Ducks Harvested
2016	10,533	3,823	185,105
2017	10,557	4,159	189,320
2018	10,271	4,051	175,822
2019	11,295	4,423	229,110
2020	12,285	4,274	241,684

DEPARTMENT RECOMMENDATION

Recommended changes from proposal: None.

DRAFT ADMINISTRATIVE RULE CHANGES

The following are proposed draft changes that are intended to incorporate the recommended changes adopted by the Commission.

41:06:16:03. Daily bag limit. The daily bag limit is six ducks or mergansers, unless the person chooses the second-tier option at which the daily bag limit is an aggregate of three ducks or mergansers of any species or gender. The total daily limit of six ducks (including mergansers) may include no more than two redheads, one scaup, three wood ducks, one pintail, two canvasback, and five mallards, of which no more than two may be hen mallards.

During the first 16 days of the season an additional two blue-winged teal may be harvested in addition to the daily bag limit.

~~For the first tier option, the daily bag limit for mergansers is five, of which no more than two may be hooded mergansers.~~

The daily bag limit for coot is 15.

41:06:16:05. Possession limit. The possession limit for ducks (including mergansers) is three times the daily bag limit for each species.

~~A person may possess at any time no more than fifteen mergansers, of which no more than six may be hooded mergansers.~~

A person may possess at any one time no more than 45 coot taken according to the daily bag limit.

APPROVE _____	MODIFY _____	REJECT _____	NO ACTION _____
---------------	--------------	--------------	-----------------

41:06:16:11.01. Nonresident waterfowl license purchase restrictions -- Unsold licenses and unit transfer dates. A person may purchase only one nonresident waterfowl license for the fall-winter general waterfowl season each year; however, if licenses remain unsold after October 31, an unlimited number of nonresident waterfowl licenses may be purchased on a first-come, first-served basis. ~~After October 31, any unsold licenses in Units NRW-00A or NRW-11A may be transferred to Unit NRW-00B. After November 15, any unsold licenses in Unit NRW-00Y may be transferred to Unit NRW-00X with the same provisions as Unit NRW-00X licenses.~~

RESIDENT/NONRESIDENT CRITERIA

1. The Issue
 - Simplification of hunting regulations is a priority for GFP. Over the years for a variety of reasons, unnecessary levels of complexity have developed in duck harvest regulations. This recommended change will reduce regulatory complexity for hunters and have little impact on the resource.
2. Historical Considerations – In the past the U.S. Fish and Wildlife Service (USFWS) allowed a separate bag limit of 5 for mergansers (including 2 hooded mergansers). In 2021, the Central Flyway Council proposed eliminating this additional bag limit for mergansers in the spirit of reducing regulatory complexity and the USFWS agreed.
3. Biological Considerations
 - None
4. Social Considerations
 - Merganser harvest is extremely low in South Dakota, this regulation change reduces complexity and aids in compliance.
5. Financial considerations
 - None

RECRUITMENT, RETENTION, REACTIVATION (R3) CRITERIA

1. Does the regulation or fee inhibit a user's ability to participate? No
2. Does the regulation increase the opportunity for new and existing users? No
3. How does the regulation impact the next generation of hunters, anglers, trappers and outdoor recreationists?
 - The goal of this change is reduction of regulatory complexity.
4. Does the regulation enhance the quality of life for current and future generations by getting families outdoors?
 - Reducing regulatory complexity generally aids in participation and compliance.

FISCAL IMPACT

Not applicable.

APPROVE _____	MODIFY _____	REJECT _____	NO ACTION _____
---------------	--------------	--------------	-----------------

GAME, FISH AND PARKS COMMISSION ACTION PROPOSAL

Early Fall Canada Goose Chapters 41:06:50

Commission Meeting Dates:	Proposal	March 3-4, 2022	Pierre
	Public Hearing	May 5, 2022	Custer State Park
	Finalization	May 5-6, 2022	Custer State Park

COMMISSION PROPOSAL

Duration of Proposal: 2022 hunting season

Season Dates: September 1 - 30, 2022 **Open Area:** Unit 1 (see map below)

Daily Limit: 15 Canada Geese **Possession Limit:** 45 Canada Geese

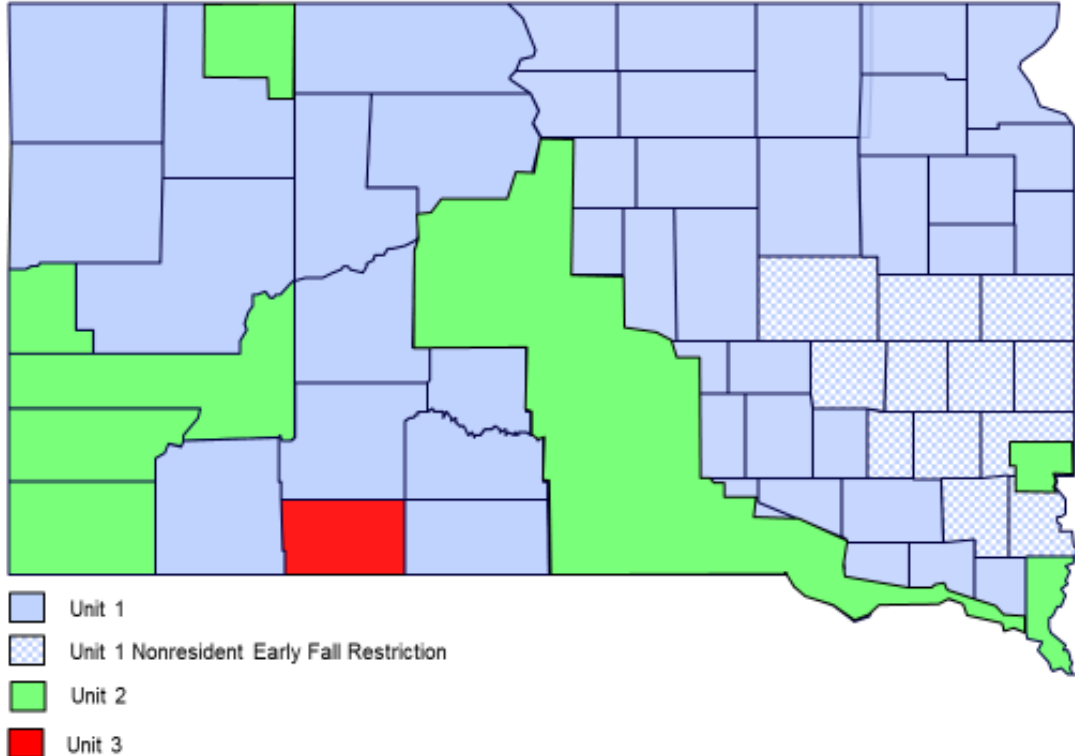
Requirements and Restrictions:

1. Shooting hours are one-half hour before sunrise to sunset.

Proposed changes from last year:

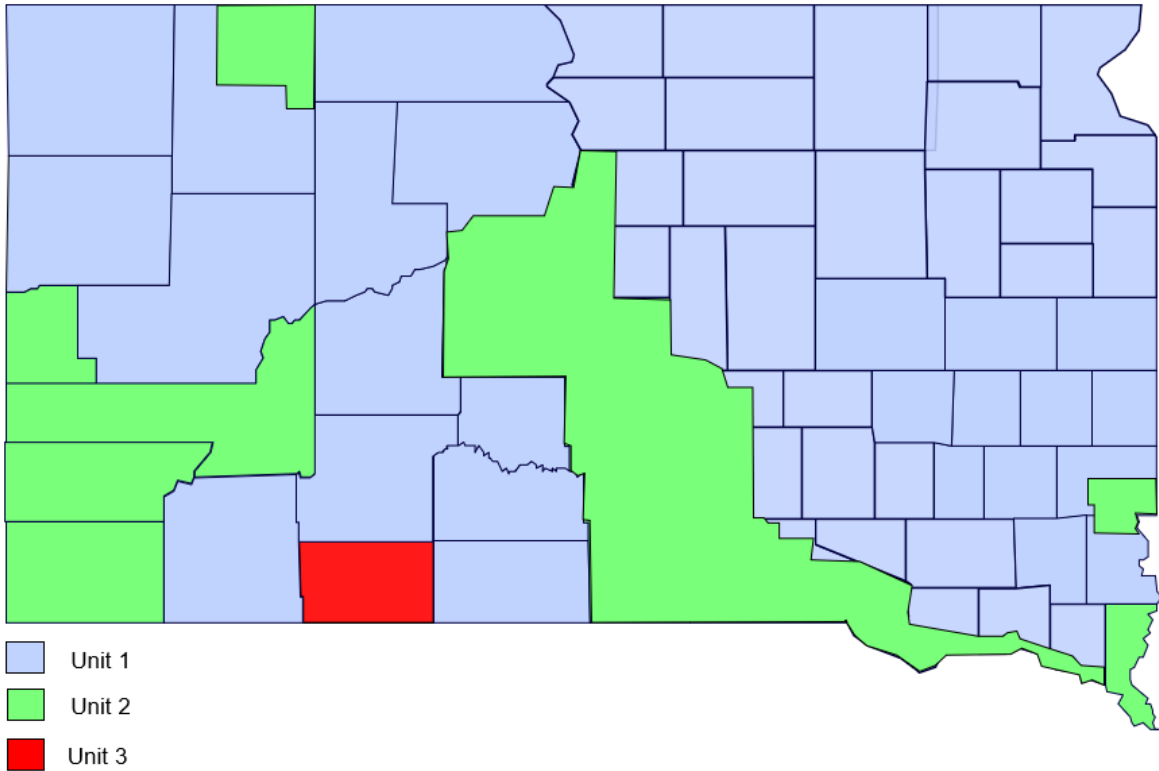
1. Remove restriction for nonresident hunters in the counties of Beadle, Brookings, Hanson, Kingsbury, Lake, Lincoln, McCook, Miner, Moody, Sanborn, Turner, Union, and Minnehaha counties.

Current Canada Goose Units



APPROVE _____ MODIFY _____ REJECT _____ NO ACTION _____

Recommended Canada Goose Units



SUPPORTIVE INFORMATION

Year	Resident Hunters	Nonresident Hunters	Total Hunters	Geese Harvested	Average Season Bag
2016	3,152	275	3,366	20,735	8.2
2017	2,997	213	3,226	27,660	8.0
2018	2,507	229	2,716	25,808	6.6
2019	2,777	207	3,000	17,904	7.0
2020	3,450	408	3,858	21,054	8.8

Year	Nonresident Hunters
2012	526
2013	373
2014	396
2015	327
2016	236
2017	252
2018	229
2019	242
2020	464

APPROVE _____ MODIFY _____ REJECT _____ NO ACTION _____

DEPARTMENT RECOMMENDATION

Recommended changes from proposal: None.

DRAFT ADMINISTRATIVE RULE CHANGES

The following are proposed draft changes that are intended to incorporate the recommended changes adopted by the Commission.

~~41:06:50:04. Eligibility requirements and restrictions. Nonresidents may not hunt early fall Canada goose in the counties of Beadle, Brookings, Hanson, Kingsbury, Lake, Lincoln, McCook, Miner, Moody, Sanborn, Turner, Union, and Minnehaha.~~

RESIDENT/NONRESIDENT CRITERIA

1. The Issue –Very few nonresident hunters take advantage of the current areas open to nonresident Early Fall Canada goose hunting. This proposal will reduce unnecessary regulatory complexity, increase goose hunting opportunity for some nonresidents, and perhaps increase goose harvest in southeastern South Dakota.
2. Historical Considerations – Not applicable
3. Biological Considerations – It is a priority of the Department to increase harvest rates on locally breeding Canada geese. This restriction is not biologically needed and runs contrary to management objectives.
4. Social Considerations – As with all nonresident opportunity in South Dakota there is a perception that any increase in nonresident opportunity will take away opportunity for residents.
5. Financial considerations – There could potentially be a small financial gain for the department through the sale of additional nonresident licenses for this season.

RECRUITMENT, RETENTION, REACTIVATION (R3) CRITERIA

1. Does the regulation or fee inhibit a user's ability to participate? No
2. Does the regulation increase the opportunity for new and existing users? Yes
3. How does the regulation impact the next generation of hunters, anglers, trappers and outdoor recreationists?
 - Provides some additional opportunity for nonresidents to hunt Canada geese in South Dakota.
4. Does the regulation enhance the quality of life for current and future generations by getting families outdoors? Unknown

FISCAL IMPACT

No fiscal impacted expected.

APPROVE _____ MODIFY _____ REJECT _____ NO ACTION _____

GAME, FISH AND PARKS COMMISSION ACTION PROPOSAL

License Forms and Fees

Chapters 41:06:02

Commission Meeting Dates:	Proposal	March 3-4, 2022	Pierre
	Public Hearing	May 5, 2022	Custer State Park
	Finalization	May 5-6, 2022	Custer State Park

COMMISSION PROPOSAL

Duration of Proposal: Beginning with the 2022 season.

Proposed changes from last year:

1. Remove the inclusion of the state migratory bird certification permit with the nonresident spring snow goose, nonresident early fall Canada goose licenses, nonresident 3-day licenses, nonresident youth waterfowl licenses and decrease applicable license fees by \$5 each.

SUPPORTIVE INFORMATION

Currently, several nonresident waterfowl licenses include the migratory bird certification permit. With the 2-tiered duck license option, applicants must select a migratory bird certification permit to reflect their choice of the traditional or 3-duck license option and pay the \$5 fee for the applicable migratory bird certification permit.

DEPARTMENT RECOMMENDATION

Recommended changes from proposal: None.

DRAFT ADMINISTRATIVE RULE CHANGES

The following are proposed draft changes that are intended to incorporate the recommended changes adopted by the Commission.

41:06:02:03. Hunting license fees. Hunting license fees are as follows:

- (29) Special nonresident waterfowl license, \$110;
- (30) Fall three-consecutive days temporary nonresident waterfowl license, ~~\$80~~ \$75;
- (31) Spring snow goose temporary nonresident license:
 - (A) Eighteen years of age and older, ~~\$44~~ \$39; and
 - (B) Under 18 years of age, ~~\$20~~ \$15;
- (32) Early fall Canada goose temporary nonresident license, ~~\$44~~ \$39;
- (33) Nonresident youth waterfowl season hunting license under 18 years of age, ~~ten~~ five dollars;

RESIDENT/NONRESIDENT CRITERIA

1. The Issue
 - Why make the change, what are the change alternatives, how will public/stakeholder input be solicited, and how will the change be evaluated if implemented?
 - i. With the 2-tiered duck license option, applicants must select a migratory bird certification permit to reflect their choice of the traditional or 3-duck license option and pay the \$5 fee for the applicable migratory bird certification permit.
2. Historical Considerations
 - Not applicable.
3. Biological Considerations
 - What is the current and projected status of the population and habitat conditions for these populations? Not applicable.

APPROVE _____ **MODIFY** _____ **REJECT** _____ **NO ACTION** _____

4. Social Considerations
 - Simplifies application and license purchase process.
5. Financial considerations
 - Not applicable.

RECRUITMENT, RETENTION, REACTIVATION (R3) CRITERIA

1. Does the regulation or fee inhibit a user's ability to participate? No.
2. Does the regulation increase the opportunity for new and existing users? Yes, simplifies application and license purchase process.
3. How does the regulation impact the next generation of hunters, anglers, trappers, and outdoor recreationists? Simplifies application and license purchase process.
4. Does the regulation enhance the quality of life for current and future generations by getting families outdoors? Not applicable.

FISCAL IMPACT

No fiscal impact to license revenue as the license requirements are simply being separated to simplify and accurately reflect the license choice of the applicant.

APPROVE _____ MODIFY _____ REJECT _____ NO ACTION _____

GAME, FISH AND PARKS COMMISSION ACTION PROPOSAL

Application for License Chapter 41:06:01

Commission Meeting Dates:	Proposal	March 3-4, 2002	Pierre
	Public Hearing	May 5, 2022	Custer State Park
	Finalization	May 5-6, 2022	Custer State Park

COMMISSION PROPOSAL

Proposed changes from last year:

1. Remove the requirement for unlimited access permits for archery, muzzleloader, mentor, youth, and apprentice deer license holders to hunt certain deer hunting units and public lands.
2. Limit the number of archery access permits for Unit WRD-27L to no more than 20 "any deer" access permits for residents and no more than 5 "any deer" access permits for nonresidents.

SUPPORTIVE INFORMATION

Research on R3 efforts (i.e., Recruitment, Reactivation, Retention) has identified rule/regulation complexity to be one of several obstacles for new sportsmen and women. The removal of these access permits will greatly simplify hunting regulations regarding mentor, archery, muzzleloader, youth, and apprentice deer license holders while having no impact to deer management in these areas. The number of access permits currently available, across all of these seasons, has created unnecessary complexity for sportsmen and women as well as the administration of these access permits in the licensing system.

Unlimited access permits were established with the intent to evaluate harvest and participation on specific management areas by deer hunters with statewide or region-wide (e.g., West River Archery Deer) license types including archery, muzzleloader, mentor, youth, and apprentice license types. Deer harvest and participation was evaluated on all areas that required an access permit in 2019 and results were presented to the Commission. As a result, the Commission took action to limit archery deer access permits to 500 residents and 125 nonresidents on management unit 35L and no other unlimited license types or access permit areas were limited. Since 2019, no changes have been made to the number of access permits available for archery deer hunters in management unit 35L and no further changes have been made to the unlimited access permit areas.

Through the 2021 deer hunting season, hunting effort and harvest success by access permit users has been collected, providing sufficient baseline information regarding use on these areas. Harvest and success by hunters with statewide or region-wide license types will continue to be estimated at the firearm deer management unit level. In the event there is a desire to consider limiting access permits on additional areas and user groups, harvest and success data will be used to evaluate use by user groups on these areas beginning the 2022 deer hunting season.

This change will simplify deer hunting regulations for statewide and region-wide deer license type user groups and reduce complexity of the deer licensing system.

Limited access units (LAUs) are intended to reduce hunter densities and provide a quality hunt experience. Trend data of supports limiting the number of resident and nonresident archery access permits for Unit WRD-27L to help meet its LAU objective. In addition, a reduction in archery deer harvest will help meet the 80% firearm hunter success goal identified in the deer management plan for LAUs.

DEPARTMENT RECOMMENDATION

Recommended changes from proposal: None.

APPROVE _____	MODIFY _____	REJECT _____	NO ACTION _____
----------------------	---------------------	---------------------	------------------------

Access Permit Survey Archery Deer Harvest Projections

Custer National Forest (35L)

Year		Permits Issued	Projected Hunted	Hunter Success	Permit Success	Harvest Projections								Total Deer Harvest
						Whitetail				Mule Deer				
						Bucks		Does		Bucks		Does		
Adult	Fawn	Adult	Fawn	Adult	Fawn	Adult	Fawn	Adult	Fawn					
2014	Resident	262	112	14%	6%	3	0	0	0	13	0	0	0	15
	Nonresident	105	75	28%	20%	2	0	0	0	19	0	0	0	21
2015	Resident	355	176	12%	6%	3	0	0	0	16	0	1	1	21
	Nonresident	102	71	22%	15%	4	0	0	0	12	0	0	0	16
2016	Resident	488	270	13%	7%	8	0	4	1	19	0	1	0	34
	Nonresident	172	134	24%	19%	3	0	0	0	28	0	0	1	32
2017	Resident	497	304	8%	5%	3	0	0	0	20	0	1	0	24
	Nonresident	326	249	21%	16%	6	1	4	0	31	1	7	1	51
2018	Resident	733	337	6%	3%	4	0	0	0	13	0	1	0	19
	Nonresident	415	281	16%	11%	7	0	0	0	36	0	3	0	46
2019	Resident	500	267	8%	4%	3	0	0	0	16	1	0	0	20
	Nonresident	125	103	13%	11%	7	0	0	1	3	0	3	0	13
2020	Resident	497	275	10%	6%	6	0	0	0	19	0	3	0	28
	Nonresident	122	92	34%	26%	12	2	0	0	17	0	2	0	32

Hill Ranch GPA (27L)

Year		Permits Issued	Projected Hunted	Hunter Success	Permit Success	Harvest Projections								Total Deer Harvest
						Whitetail				Mule Deer				
						Bucks		Does		Bucks		Does		
Adult	Fawn	Adult	Fawn	Adult	Fawn	Adult	Fawn	Adult	Fawn					
2014	Resident	126	54	14%	6%	4	0	1	0	2	0	0	0	7
	Nonresident	23	8	29%	10%	2	0	0	0	0	0	0	0	2
2015	Resident	136	61	9%	4%	1	0	4	0	0	0	0	0	5
	Nonresident	33	18	0%	0%	0	0	0	0	0	0	0	0	0
2016	Resident	157	51	6%	2%	3	0	0	0	0	0	0	0	3
	Nonresident	52	24	24%	11%	3	0	0	0	3	0	0	0	6
2017	Resident	149	60	7%	3%	1	1	1	0	0	0	0	0	4
	Nonresident	62	23	5%	2%	0	0	0	0	1	0	0	0	1
2018	Resident	229	62	2%	1%	0	0	1	0	0	0	0	0	1
	Nonresident	82	31	8%	3%	1	0	0	0	1	0	0	0	2
2019	Resident	171	42	11%	3%	2	0	0	0	2	2	0	0	5
	Nonresident	64	20	7%	2%	1	0	0	0	0	0	0	0	1
2020	Resident	186	69	15%	6%	2	0	3	3	2	0	0	0	10
	Nonresident	24	15	50%	31%	5	0	2	0	2	0	0	0	8

APPROVE _____ MODIFY _____ REJECT _____ NO ACTION _____

Access Permit Survey Archery Deer Harvest Projections

Little Moreau GPA (24B)

Year		Permits Issued	Projected Hunted	Hunter Success	Permit Success	Harvest Projections								Total Deer Harvest
						Whitetail				Mule Deer				
						Bucks		Does		Bucks		Does		
						Adult	Fawn	Adult	Fawn	Adult	Fawn	Adult	Fawn	
2014	Resident	82	17	7%	1%	1	0	0	0	0	0	0	0	1
	Nonresident	15	6	40%	15%	0	0	1	1	0	0	0	0	2
2015	Resident	95	23	26%	6%	2	0	4	0	0	0	0	0	6
	Nonresident	22	12	11%	6%	1	0	0	0	0	0	0	0	1
2016	Resident	118	30	14%	4%	1	0	1	1	0	0	0	0	4
	Nonresident	28	4	33%	5%	0	0	1	0	0	0	0	0	1
2017	Resident	113	29	17%	4%	2	0	2	0	0	0	0	0	5
	Nonresident	47	9	38%	7%	3	0	0	0	0	0	0	0	3
2018	Resident	142	30	9%	2%	1	0	1	0	0	0	0	0	3
	Nonresident	59	4	0%	0%	0	0	0	0	0	0	0	0	0
2019	Resident	103	34	13%	4%	1	0	1	1	0	0	0	0	4
	Nonresident	41	3	0%	0%	0	0	0	0	0	0	0	0	0
2020	Resident	96	30	18%	5%	2	0	3	0	0	0	0	0	5
	Nonresident	5	3	0%	0%	0	0	0	0	0	0	0	0	0

Brule County certain GPA/Corps (13L)

Year		Permits Issued	Projected Hunted	Hunter Success	Permit Success	Harvest Projections								Total Deer Harvest
						Whitetail				Mule Deer				
						Bucks		Does		Bucks		Does		
						Adult	Fawn	Adult	Fawn	Adult	Fawn	Adult	Fawn	
2017	Resident	112	15	17%	2%	0	0	0	0	2	0	0	0	2
	Nonresident	44	0		0%	0	0	0	0	0	0	0	0	0
2018	Resident	181	24	6%	1%	0	0	1	0	0	0	0	0	1
	Nonresident	66	14	0%	0%	0	0	0	0	0	0	0	0	0
2019	Resident	155	38	8%	2%	3	0	0	0	0	0	0	0	3
	Nonresident	54	5	0%	0%	0	0	0	0	0	0	0	0	0
2020	Resident	149	37	9%	2%	3	0	0	0	0	0	0	0	3
	Nonresident	13	4	50%	17%	2	0	0	0	0	0	0	0	2

Black Hills Unit (BH1)

Year		Permits Issued	Projected Hunted	Hunter Success	Permit Success	Harvest Projections								Total Deer Harvest
						Whitetail				Mule Deer				
						Bucks		Does		Bucks		Does		
						Adult	Fawn	Adult	Fawn	Adult	Fawn	Adult	Fawn	
2016*	Resident	NA	NA	NA	NA	384	31	215	11	83	0	15	5	744
	Nonresident	NA	NA	NA	NA	76	4	39	3	49	0	7	0	177
2017*	Resident	NA	NA	NA	NA	440	12	248	17	82	0	22	0	822
	Nonresident	NA	NA	NA	NA	101	3	51	3	34	0	13	0	203
2018	Resident	2,182	1,338	34%	21%	235	13	138	8	58	0	7	0	459
	Nonresident	277	125	37%	17%	37	0	1	0	4	0	3	0	46
2019	Resident	1,419	913	29%	19%	140	13	90	6	15	0	3	1	268
	Nonresident	160	66	46%	19%	15	0	9	0	7	0	0	0	30
2020	Resident	1,171	733	45%	28%	166	5	117	6	27	0	6	0	328
	Nonresident	74	33	74%	33%	10	0	10	0	2	0	2	0	24

*Prior to 2018 harvest numbers are from the regular archery survey

APPROVE _____ MODIFY _____ REJECT _____ NO ACTION _____

Access Permit Muzzleloader Deer Harvest Projections

Custer National Forest (35L)

Year	Permits Issued		Sold	Projected Hunted	Hunter Success	Permit Success	Harvest Projections								Total Deer Harvest
							Whitetail				Mule Deer				
	Resident	Nonresident					Bucks	Does	Bucks	Does	Bucks	Does	Bucks	Does	
2014	27	0	27	14	25%	13%	0	0	0	0	4	0	0	0	4
2015	57	0	57	24	25%	11%	0	0	0	0	6	0	0	0	6
2016	58	0	58	26	32%	14%	1	0	1	0	6	0	0	0	8
2017	70	0	70	34	23%	11%	2	0	0	0	6	0	0	0	8
2018	72	0	72	40	19%	10%	0	0	0	0	7	0	0	0	7
2019	100	0	100	40	39%	15%	1	0	0	0	13	0	1	0	15
2020	141	0	141	60	41%	17%	3	0	0	0	22	0	0	0	25

Hill Ranch GPA (27L)

Year	Permits Issued		Sold	Projected Hunted	Hunter Success	Permit Success	Harvest Projections								Total Deer Harvest
							Whitetail				Mule Deer				
	Resident	Nonresident					Bucks	Does	Bucks	Does	Bucks	Does	Bucks	Does	
2014	19	0	19	7	33%	12%	0	0	0	0	1	0	1	0	2
2015	31	0	31	10	0%	0%	0	0	0	0	0	0	0	0	0
2016	38	0	38	15	23%	9%	4	0	0	0	0	0	0	0	4
2017	38	0	38	10	20%	5%	1	0	0	0	1	0	0	0	2
2018	17	0	17	4	0%	0%	0	0	0	0	0	0	0	0	0
2019	18	0	18	5	25%	7%	1	0	0	0	0	0	0	0	1
2020	44	0	44	8	17%	3%	0	0	0	1	0	0	0	0	1

Little Moreau GPA (24B)

Year	Permits Issued		Sold	Projected Hunted	Hunter Success	Permit Success	Harvest Projections								Total Deer Harvest
							Whitetail				Mule Deer				
	Resident	Nonresident					Bucks	Does	Bucks	Does	Bucks	Does	Bucks	Does	
2014	27	3	30	12	18%	7%	0	0	2	0	0	0	0	0	2
2015	43	2	45	18	25%	10%	0	2	2	0	0	0	0	0	4
2016	54	9	63	16	43%	11%	1	1	3	1	0	0	0	0	7
2017	42	9	51	22	32%	16%	0	0	7	0	0	1	0	0	8
2018	47	8	55	23	19%	8%	1	1	1	0	0	0	0	0	4
2019	36	5	41	11	43%	12%	0	2	2	2	0	0	0	0	5
2020	31	2	33	8	50%	12%	1	1	1	0	0	0	0	0	4

Brule County certain GPA/Corps (13L)

Year	Permits Issued		Sold	Projected Hunted	Hunter Success	Permit Success	Harvest Projections								Total Deer Harvest
							Whitetail				Mule Deer				
	Resident	Nonresident					Bucks	Does	Bucks	Does	Bucks	Does	Bucks	Does	
2017	32	0	32	2	50%	3%	0	0	0	1	0	0	0	0	1
2018	20	0	20	4	0%	0%	0	0	0	0	0	0	0	0	0
2019	22	0	22	6	25%	6%	0	0	0	0	0	0	1	0	1
2020	44	0	44	5	0%	0%	0	0	0	0	0	0	0	0	0

Black Hills Unit Harvest

Year	Permits Issued		Sold	Projected Hunted	Hunter Success	Permit Success	Harvest Projections								Total Deer Harvest
							Whitetail				Mule Deer				
	Resident	Nonresident					Bucks	Does	Bucks	Does	Bucks	Does	Bucks	Does	
2014	NA	NA	NA	NA	NA	NA	24	0	16	3	12	0	0	0	54
2015	NA	NA	NA	NA	NA	NA	17	0	5	3	16	0	3	0	44
2016	NA	NA	NA	NA	NA	NA	38	28	174	27	8	1	0	0	275
2017	NA	NA	NA	NA	NA	NA	32	20	250	30	14	0	1	0	346
2018	NA	NA	NA	NA	NA	NA	17	23	259	24	16	0	0	0	339
2019	NA	NA	NA	NA	NA	NA	20	14	172	9	8	0	2	0	226
2020	NA	NA	NA	NA	NA	NA	18	28	169	14	11	1	0	0	241

APPROVE _____ **MODIFY** _____ **REJECT** _____ **NO ACTION** _____

Access Permit Youth/Apprentice Deer Harvest Projections

Custer National Forest (35L)

Year	Permits Issued		Sold	Projected Hunted	Hunter Success	Permit Success	Harvest Projections								Total Deer Harvest
							Whitetail				Mule Deer				
	Resident	Nonresident					Bucks	Does	Bucks	Does	Bucks	Does	Bucks	Does	
2014	20	6	26	9	25%	9%	0	0	0	0	2	0	0	2	
2015	15	2	17	5	25%	8%	0	0	0	0	0	1	0	1	
2016	28	4	32	6	75%	13%	0	0	0	0	0	3	1	4	
2017	19	4	23	10	44%	20%	0	1	0	1	2	0	0	5	
2018	27	9	36	10	38%	10%	0	0	0	1	2	0	0	4	
2019	20	7	27	11	67%	26%	0	0	0	0	4	4	0	7	
2020	23	10	33	8	60%	15%	0	2	0	0	2	2	0	5	

Hill Ranch GPA (27L)

Year	Permits Issued		Sold	Projected Hunted	Hunter Success	Permit Success	Harvest Projections								Total Deer Harvest
							Whitetail				Mule Deer				
	Resident	Nonresident					Bucks	Does	Bucks	Does	Bucks	Does	Bucks	Does	
2014	17	6	23	12	29%	15%	0	2	2	0	0	0	0	4	
2015	10	2	12	5	25%	10%	1	0	0	0	0	0	0	1	
2016	17	2	19	5	0%	0%	0	0	0	0	0	0	0	0	
2017	11	1	12	7	40%	22%	0	0	1	1	0	0	0	3	
2018	24	0	24	4	0%	0%	0	0	0	0	0	0	0	0	
2019	14	2	16	6	40%	15%	0	1	1	0	0	0	0	2	
2020	18	1	19	4	50%	10%	0	2	0	0	0	0	0	2	

Little Moreau GPA (24B)

Year	Permits Issued		Sold	Projected Hunted	Hunter Success	Permit Success	Harvest Projections								Total Deer Harvest
							Whitetail				Mule Deer				
	Resident	Nonresident					Bucks	Does	Bucks	Does	Bucks	Does	Bucks	Does	
2014	13	3	16	5	0%	0%	0	0	0	0	0	0	0	0	
2015	7	3	10	4	67%	25%	0	3	0	0	0	0	0	3	
2016	16	1	17	9	38%	20%	1	1	0	0	0	1	0	3	
2017	7	3	10	6	33%	20%	0	2	0	0	0	0	0	2	
2018	17	2	19	6	17%	6%	0	1	0	0	0	0	0	1	
2019	6	1	7	5	33%	25%	2	0	0	0	0	0	0	2	
2020	8	1	9	3	100%	33%	3	0	0	0	0	0	0	3	

Brule County certain GPA/Corps (13L)

Year	Permits Issued		Sold	Projected Hunted	Hunter Success	Permit Success	Harvest Projections								Total Deer Harvest
							Whitetail				Mule Deer				
	Resident	Nonresident					Bucks	Does	Bucks	Does	Bucks	Does	Bucks	Does	
2017	12	0	12	4	50%	18%	0	1	0	1	0	0	0	2	
2018	24	0	24	1	0%	0%	0	0	0	0	0	0	0	0	
2019	14	1	15	5	0%	0%	0	0	0	0	0	0	0	0	
2020	20	1	21	5	50%	11%	0	2	0	0	0	0	0	2	

Black Hills Unit Harvest

Year	Permits Issued		Sold	Projected Hunted	Hunter Success	Permit Success	Harvest Projections								Total Deer Harvest
							Whitetail				Mule Deer				
	Resident	Nonresident					Bucks	Does	Bucks	Does	Bucks	Does	Bucks	Does	
2014	NA	NA	NA	NA	NA	NA	25	174	18	0	32	0	0	250	
2015	NA	NA	NA	NA	NA	NA	29	204	34	4	38	2	0	311	
2016	NA	NA	NA	NA	NA	NA	37	289	26	3	33	4	0	392	
2017	NA	NA	NA	NA	NA	NA	28	273	35	3	47	1	0	388	
2018	NA	NA	NA	NA	NA	NA	21	297	23	5	35	8	0	389	
2019	NA	NA	NA	NA	NA	NA	30	192	22	3	28	0	0	275	
2020	NA	NA	NA	NA	NA	NA	25	288	31	0	51	2	0	397	

APPROVE _____ MODIFY _____ REJECT _____ NO ACTION _____

Access Permit Mentored Youth Deer Harvest Projections

Custer National Forest (35L)

Year	Permits Issued		Sold	Projected Hunted	Hunter Success	Permit Success	Harvest Projections								Total Deer Harvest
	Resident	Nonresident					Whitetail				Mule Deer				
							Bucks		Does		Bucks		Does		
	Adult	Fawn					Adult	Fawn	Adult	Fawn	Adult	Fawn			
2014	11	0	11	4	67%	25%	0	0	0	0	0	3	0	3	
2015	10	0	10	3	50%	17%	0	0	2	0	0	0	0	2	
2016	23	0	23	3	50%	6%	0	0	0	0	1	0	0	1	
2017	14	0	14	1	0%	0%	0	0	0	0	0	0	0	0	
2018	30	0	30	4	0%	0%	0	0	0	0	0	0	0	0	
2019	37	0	37	4	0%	0%	0	0	0	0	0	0	0	0	
2020	17	0	17	3	33%	6%	0	0	0	0	1	0	0	1	

Hill Ranch GPA (27L)

Year	Permits Issued		Sold	Projected Hunted	Hunter Success	Permit Success	Harvest Projections								Total Deer Harvest
	Resident	Nonresident					Whitetail				Mule Deer				
							Bucks		Does		Bucks		Does		
	Adult	Fawn					Adult	Fawn	Adult	Fawn	Adult	Fawn			
2014	7	0	7	1	0%	0%	0	0	0	0	0	0	0	0	
2015	7	0	7	2	50%	14%	0	0	0	1	0	0	0	1	
2016	11	0	11	3	50%	14%	0	2	0	0	0	0	0	2	
2017	6	0	6	2	100%	33%	1	1	0	0	0	0	0	2	
2018	18	0	18	6	100%	31%	1	4	0	0	0	0	0	6	
2019	25	0	25	11	13%	6%	0	0	0	0	1	0	0	1	
2020	21	0	21	6	100%	31%	0	6	0	0	0	0	0	6	

Little Moreau GPA (24B)

Year	Permits Issued		Sold	Projected Hunted	Hunter Success	Permit Success	Harvest Projections								Total Deer Harvest
	Resident	Nonresident					Whitetail				Mule Deer				
							Bucks		Does		Bucks		Does		
	Adult	Fawn					Adult	Fawn	Adult	Fawn	Adult	Fawn			
2014	5	0	5	3	100%	50%	0	1	1	0	0	0	0	3	
2015	3	0	3	2	50%	33%	1	0	0	0	0	0	0	1	
2016	7	0	7	0	0%	0%	0	0	0	0	0	0	0	0	
2017	7	0	7	1	0%	0%	0	0	0	0	0	0	0	0	
2018	6	0	6	0	0%	0%	0	0	0	0	0	0	0	0	
2019	8	0	8	0	0%	0%	0	0	0	0	0	0	0	0	
2020	5	0	5	3	0%	0%	0	0	0	0	0	0	0	0	

Brule County certain GPA/Corps (13L)

Year	Permits Issued		Sold	Projected Hunted	Hunter Success	Permit Success	Harvest Projections								Total Deer Harvest
	Resident	Nonresident					Whitetail				Mule Deer				
							Bucks		Does		Bucks		Does		
	Adult	Fawn					Adult	Fawn	Adult	Fawn	Adult	Fawn			
2017	9	0	9	3	0%	0%	0	0	0	0	0	0	0	0	
2018	25	0	25	6	40%	9%	0	1	0	0	0	1	0	2	
2019	25	0	25	6	25%	6%	0	0	0	1	0	0	0	1	
2020	15	0	15	1	0%	0%	0	0	0	0	0	0	0	0	

Black Hills Unit Harvest

Year	Permits Issued		Sold	Projected Hunted	Hunter Success	Permit Success	Harvest Projections								Total Deer Harvest
	Resident	Nonresident					Whitetail				Mule Deer				
							Bucks		Does		Bucks		Does		
	Adult	Fawn					Adult	Fawn	Adult	Fawn	Adult	Fawn			
2014	NA	NA	NA	NA	NA	NA	15	106	38	1	20	6	187		
2015	NA	NA	NA	NA	NA	NA	12	129	21	1	25	0	188		
2016	NA	NA	NA	NA	NA	NA	32	149	23	4	21	1	230		
2017	NA	NA	NA	NA	NA	NA	29	195	27	4	38	4	297		
2018	NA	NA	NA	NA	NA	NA	26	240	34	2	24	0	326		
2019	NA	NA	NA	NA	NA	NA	31	200	34	2	25	1	293		
2020	NA	NA	NA	NA	NA	NA	31	236	48	6	17	0	338		

DRAFT ADMINISTRATIVE RULE CHANGES

APPROVE _____ MODIFY _____ REJECT _____ NO ACTION _____

The following are proposed draft changes that are intended to incorporate the recommended changes adopted by the Commission.

41:06:01:17. Access permits required for specific deer hunting units and public lands. Any resident or nonresident deer hunter possessing an archery, muzzleloader, apprentice hunter, youth, or mentor deer license shall obtain and possess a free limited access permit to hunt certain hunting units or public lands described in § 41:06:22:01. West River deer units 24B, 27L, 35L, and East River deer unit 13L. Any resident or nonresident deer hunter possessing an archery deer license shall obtain and possess a free access permit in order to hunt Newton Hills State Park or in the Black Hills as defined in § 41:06:19:02. Unlimited access permits may be issued for each management unit and each free access permit shall be unit specific.

41:06:22:01. Archery deer hunting season established -- Number and type of licenses -- Access permits. The archery deer hunting season is open statewide from one-half hour before sunrise to one-half hour after sunset each day beginning September 1 through January 1, except as otherwise provided in § 41:06:22:02. Unlimited "any deer" licenses may be issued for units ARD-ST1, ARD-ER1, and ARD-WR1 and unlimited antlerless whitetail deer licenses may be issued for unit ARD-LM1. One thousand single-tag "any antlerless deer" licenses may be issued for use in ARD-MP1, ARD-MP2 and ARD-MP3. No more than ten "any deer" and 50 antlerless whitetail deer access permits may be issued to residents for Adams Homestead and Nature Preserve. No more than ten "any deer" and 25 "antlerless whitetail deer" access permits may be issued to residents for Good Earth State Park. No more than 500 "any deer" access permits may be issued to residents and no more than 125 "any deer" access permits may be issued to nonresidents for unit WRD-35L described in § 41:06:20:02. No more than 20 "any deer" access permits may be issued to residents and no more than 5 "any deer" access permits may be issued to nonresidents for unit WRD-27L described in § 41:06:20:02.

RESIDENT/NONRESIDENT CRITERIA

1. The Issue
 - Unlimited access permits were originally used to monitor deer hunter numbers and success on specific management units. Adequate data have been obtained to evaluate hunter numbers and harvest on these areas, and future monitoring can be obtained via harvest estimates and success without the need for unlimited access permits.
2. Historical Considerations
 - Data regarding unlimited access permit use and harvest success were evaluated in 2019 and changes were made to limit archery hunters in deer management unit 35L.
3. Biological Considerations
 - Harvest estimates at the firearm deer management unit will continue to be estimated by deer hunters with statewide and region-wide license types and these data are used to evaluate biological impact of harvest to the deer population.
4. Social Considerations
 - Hunter density and harvest by hunters with statewide and region-wide license types will continue to be monitored to estimate and evaluate social considerations, such as perceived hunter density and crowding.
5. Financial considerations
 - Access permits are available at no cost, so there is no financial consideration.

RECRUITMENT, RETENTION, REACTIVATION (R3) CRITERIA

1. Does the regulation or fee inhibit a user's ability to participate? No.
2. Does the regulation increase the opportunity for new and existing users?
 - No, the access permits were free and unlimited, so the removal of these permits will have no effect on opportunity.
3. How does the regulation impact the next generation of hunters, anglers, trappers, and outdoor recreationists?
 - The regulation will simplify hunting requirements for deer hunter license types including archery, muzzleloader, mentor, youth, and apprentice.
4. Does the regulation enhance the quality of life for current and future generations by getting families outdoors? Not applicable.

FISCAL IMPACT

No fiscal impact as all access permits are issued free of charge.

APPROVE _____	MODIFY _____	REJECT _____	NO ACTION _____
---------------	--------------	--------------	-----------------

GAME, FISH AND PARKS COMMISSION ACTION PROPOSAL

Spring Wild Turkey Hunting Season

Chapter 41:06:13

Commission Meeting Dates:	Proposal	April 7-8, 2022	Watertown
	Public Hearing	June 2, 2022	Aberdeen
	Finalization	June 2-3, 2022	Aberdeen

COMMISSION PROPOSAL

Proposed changes from last year:

1. Establish new rules within the Spring Turkey Hunting Season chapter that provides for Mentored Youth Turkey Recruitment licenses.

SUPPORTIVE INFORMATION

The objective of this proposal is to provide a means of encouraging youth participation with non-governmental organizations (NGO) that promote wildlife conservation and the recruitment, retention, and reactivation of hunters.

Currently for youth hunters, an unlimited number of mentored spring and fall turkey licenses are available for those youth under the age of 16 and valid statewide wherever a spring or fall turkey season is open, excluding Custer State Park. In addition, those youth who are 12 years of age who has completed a GFP's course of instruction in the safe handling of firearms are eligible to apply for limited draw prairie turkey licenses and to purchase an archery and/or Black Hills turkey license.

A mentored youth turkey recruitment license sponsored by an NGO would be available to those youth 15 years of age and younger that do not already possess any type of spring turkey hunting license. A limited number of licenses would be made available by application to eligible NGOs for distribution.

DRAFT ADMINISTRATIVE RULE CHANGES

The following are proposed draft changes that are intended to incorporate the necessary changes for consideration by the Commission.

41:06:13:05. Mentored youth turkey recruitment license – Open area and eligibility. The mentored youth turkey recruitment licenses are valid statewide, excluding Custer State Park, from one-half hour before sunrise to sunset beginning on the first Saturday of April through May 31 during the spring turkey hunting seasons. A person is eligible as provided in SDCL 41-6-81.

41:06:13:06. Number and types of licenses available -- Application process. A sponsoring non-governmental organization shall complete and apply to the department stating the name, address, and phone number of the sponsoring organization. No more than 10 male turkey licenses may be issued with no more than two of the allocated licenses issued per sponsoring non-governmental organization. The sponsoring non-governmental organization shall be responsible for license fees.

41:06:13:07. Criteria for selection by commission of non-governmental organization. Any non-governmental organizations devoted to wildlife management; preservation; propagation; habitat; research; hunter retention, recruitment, and reactivation; and recognized as an exempt organization under § 501(c)(3) of the United States Internal Revenue Code may apply for such licenses.

41:06:13:08. Application deadline. The completed application under §41:06:13:06 must be received by the department by December 31 preceding the spring turkey season.

41:06:13:09. Selection of non-governmental organization by commission. The commission shall review and evaluate the information contained in the applications according to the criteria listed in §41:06:13:07 and shall select the participants it considers best qualified. The department secretary shall notify all applicants regarding the commission's selection.

APPROVE _____ **MODIFY** _____ **REJECT** _____ **NO ACTION** _____

RESIDENT/NONRESIDENT CRITERIA

1. The Issue
 - Youth involvement in non-governmental organizations that promote wildlife conservation is encouraged.
2. Historical Considerations
 - Non-governmental organizations promote wildlife conservation at the grassroots level and are conservation partners with local, tribal, state, and federal wildlife agencies.
3. Biological Considerations
 - Not applicable.
4. Social Considerations
 - The intent is to encourage youth to become involved in with non-governmental organizations that promote wildlife conservation and the recruitment, retention, and reactivation of hunters.
5. Financial considerations
 - Not applicable.

RECRUITMENT, RETENTION, REACTIVATION (R3) CRITERIA

1. Does the regulation or fee inhibit a user's ability to participate? No.
2. Does the regulation increase the opportunity for new and existing users? Yes.
3. How does the regulation impact the next generation of hunters, anglers, trappers, and outdoor recreationists?
 - Yes, by encouraging youth to become members and get involved with non-governmental organizations and their respective activities related to wildlife conservation.
4. Does the regulation enhance the quality of life for current and future generations by getting families outdoors?
 - Yes

FISCAL IMPACT

Not applicable.

APPROVE _____ MODIFY _____ REJECT _____ NO ACTION _____

RESOLUTION 22 - 07

WHEREAS, Dock 44 is operated by A&E Marina, LLC., under the terms and conditions of a Concession Agreement with the Department of Game, Fish and Parks dated April 3, 2017 as authorized by the Game, Fish and Parks Commission for the marina, restaurant, lodging and retail facilities; and

WHEREAS, the existing two partners of A&E Marina LLC., have agreed to terms of sale of the membership interest of one partner in the LLC to the other partner; and,

WHEREAS, the remaining partner has filed for a name change of A&E Marina, LLC. to Dock 44 Marina, LLC.; and;

WHEREAS, the remaining partner desires to continue to operate the Dock 44 concession operation under the terms of the existing Concession Agreement dated April 3, 2017; and,

WHEREAS, the Department concurs with the change in ownership status, the change in name of the LLC., as well as the continued operation of Dock 44 via the remaining existing partner; and,

WHEREAS, in accordance with ARSD 41:13, a transfer of controlling interest in the Concession Agreement between existing partners is subject to written approval of the Game, Fish and Parks Commission,

NOW THEREFORE, BE IT RESOLVED, that the GFP Commission does hereby approve the transfer of the interest in the Dock 44 Concession Agreement dated April 3, 2017 from A&E Marina, LLC. to Dock 44 Marina, LLC.

Division of Parks and Recreation
March YTD 2022 Camping by District

<i>LOCATION</i>	<i>2021</i>	<i>2022</i>	<i>%</i>	<i>LOCATION</i>	<i>2021</i>	<i>2022</i>	<i>%</i>
Pickereel Lake	45	23	-49%	Lewis & Clark	177	101	-43%
Fort Sisseton	8	6	-25%	Chief White Crane	9	5	-44%
Roy Lake	150	188	25%	Pierson Ranch	23	3	-87%
Sica Hollow	-	-		Springfield	2	-	-100%
DISTRICT 1	203	217	7%	Sand Creek	-	-	
Richmond Lake	13	2	-85%	Tabor	-	-	
Mina Lake	108	8	-93%	DISTRICT 9	211	109	-48%
Fisher Grove	-	18		North Point	22	26	18%
Amsden	2	-	-100%	North Wheeler	-	-	
Lake Louise	12	10	-17%	Pease Creek	2	6	200%
DISTRICT 2	135	38	-72%	Randall Creek	8	14	75%
Pelican Lake	19	11	-42%	South Shore	1	-	
Sandy Shore	5	2	-60%	South Scalp	-	-	
Lake Cochrane	7	-	-100%	Whetstone	-	-	
Hartford Beach	35	39	11%	White Swan	-	-	
DISTRICT 3	66	52	-21%	DISTRICT 10	33	46	39%
Oakwood Lakes	39	19	-51%	Farm Island	58	55	-5%
Lake Poinsett	18	17	-6%	West Bend	7	56	700%
Lake Thompson	67	43	-36%	DISTRICT 11	65	111	71%
DISTRICT 4	124	79	-36%	Oahe Downstream	72	26	-64%
Lake Herman	24	30	25%	Cow Creek	33	4	-88%
Walker's Point	7	4	-43%	Okobojo	-	2	
Lake Carthage	-	-		Spring Creek	-	25	
DISTRICT 5	31	34	10%	DISTRICT 12	105	57	-46%
Snake Creek	27	23	-15%	West Whitlock	7	5	-29%
Platte Creek	1	1	0%	East Whitlock	-	-	
Buryanek	4	17	325%	Swan Creek	4	-	-100%
Burke Lake	-	-		Indian Creek	61	23	-62%
DISTRICT 6	32	41	28%	Lake Hiddenwood	-	-	
Palisades	132	185	40%	Walth Bay	-	-	
Big Sioux	124	91	-27%	West Pollock	11	4	-64%
Lake Vermillion	73	60	-18%	DISTRICT 13	83	32	-61%
DISTRICT 7	329	336	2%	Bear Butte	11	8	-27%
Newton Hills	120	106	-12%	DISTRICT 14	11	8	-27%
Good Earth	-	-		Shadehill	24	27	13%
Union Grove	15	8	-47%	Llewellyn Johns	3	1	-67%
DISTRICT 8	135	114	-16%	Rocky Point	36	51	42%
				DISTRICT 15	63	79	25%
				Custer	308	247	-20%
				DISTRICT 16	308	247	-20%
				Angostura	104	76	-27%
				Sheps Canyon	2	5	150%
				DISTRICT 17	106	81	-24%
				TOTAL YTD	2,040	1,681	-18%
				TOTAL for Month	1,319	967	-27%

Division of Parks and Recreation
March YTD 2022 Visitation by District

<i>LOCATION</i>	<i>2020</i>	<i>2021</i>	<i>%</i>	<i>LOCATION</i>	<i>2020</i>	<i>2021</i>	<i>%</i>
Pickerel Lake	2,947	2,506	-15%	Lewis & Clark	142,601	96,145	-33%
Fort Sisseton	6,030	3,100	-49%	Chief White Crane	517	500	-3%
Roy Lake	15,371	10,730	-30%	Pierson Ranch	8,790	6,808	-23%
Sica Hollow	8,088	-	-100%	Springfield	26,644	25,732	-3%
<i>DISTRICT 1</i>	<i>32,436</i>	<i>16,336</i>	<i>-50%</i>	<i>DISTRICT 9</i>	<i>178,552</i>	<i>129,185</i>	<i>-28%</i>
Richmond Lake	3,911	2,445	-37%	North Point	6,832	8,212	20%
Mina Lake	2,311	1,608	-30%	North Wheeler	1,649	2,209	34%
Fisher Grove	256	460	80%	Pease Creek	1,886	1,457	-23%
Lake Louise	3,915	2,919	-25%	Randall Creek	6,359	6,115	-4%
<i>DISTRICT 2</i>	<i>10,393</i>	<i>7,432</i>	<i>-28%</i>	Fort Randall Marina	396	334	-16%
Pelican Lake	6,888	5,301	-23%	<i>DISTRICT 10</i>	<i>17,122</i>	<i>18,327</i>	<i>7%</i>
Sandy Shore	3,028	3,212	6%	Farm Island	30,988	23,062	-26%
Lake Cochrane	767	499	-35%	West Bend	1,447	2,241	55%
Hartford Beach	30,272	22,046	-27%	LaFramboise Island	20,279	17,997	-11%
<i>DISTRICT 3</i>	<i>40,955</i>	<i>31,058</i>	<i>-24%</i>	<i>DISTRICT 11</i>	<i>52,714</i>	<i>43,300</i>	<i>-18%</i>
Oakwood Lakes	5,734	4,454	-22%	Oahe Downstream	46,449	41,716	-10%
Lake Poinsett	5,037	3,275	-35%	Cow Creek	28,136	29,052	3%
Lake Thompson	8,277	5,797	-30%	Okobojo	6,923	7,269	5%
<i>DISTRICT 4</i>	<i>19,048</i>	<i>13,526</i>	<i>-29%</i>	Spring Creek	25,590	34,549	35%
Lake Herman	16,641	14,011	-16%	<i>DISTRICT 12</i>	<i>107,098</i>	<i>112,586</i>	<i>5%</i>
Walker's Point	4,339	3,821	-12%	West Whitlock	2,108	1,873	-11%
<i>DISTRICT 5</i>	<i>20,980</i>	<i>17,832</i>	<i>-15%</i>	Swan Creek	2,048	1,943	-5%
Snake Creek	9,177	13,055	42%	Indian Creek	6,467	6,533	1%
Platte Creek	7,656	11,319	48%	Lake Hiddenwood	-	-	
Buryanek	4,394	5,552	26%	Revheim Bay	14,528	14,085	-3%
Burke Lake	4,494	3,373	-25%	West Pollock	9,791	9,741	-1%
<i>DISTRICT 6</i>	<i>25,721</i>	<i>33,299</i>	<i>29%</i>	<i>DISTRICT 13</i>	<i>34,942</i>	<i>34,175</i>	<i>-2%</i>
Palisades	14,538	11,362	-22%	Bear Butte	3,097	2,307	-26%
Big Sioux	7,750	7,521	-3%	<i>DISTRICT 14</i>	<i>3,097</i>	<i>2,307</i>	<i>-26%</i>
Beaver Creek	4,864	4,240	-13%	Shadehill	4,264	3,203	-25%
Lake Vermillion	12,076	8,155	-32%	Llewellyn Johns	499	409	-18%
<i>DISTRICT 7</i>	<i>39,228</i>	<i>31,278</i>	<i>-20%</i>	Little Moreau	3,652	2,460	-33%
Newton Hills	12,842	11,397	-11%	Rocky Point	5,945	6,271	5%
Good Earth	22,578	18,725	-17%	<i>DISTRICT 15</i>	<i>14,360</i>	<i>12,343</i>	<i>-14%</i>
Union Grove	2,452	2,030	-17%	Custer	168,686	164,135	-3%
Lake Alvin	31,440	27,893	-11%	<i>DISTRICT 16</i>	<i>168,686</i>	<i>164,135</i>	<i>-3%</i>
Spirit Mound	3,626	3,326	-8%	Angostura	14,411	11,428	-21%
Adams	4,635	4,449	-4%	Sheps Canyon	3,355	2,455	-27%
<i>DISTRICT 8</i>	<i>77,573</i>	<i>67,820</i>	<i>-13%</i>	<i>DISTRICT 17</i>	<i>17,766</i>	<i>13,883</i>	<i>-22%</i>
				<i>TOTAL YTD</i>	<i>860,671</i>	<i>748,822</i>	<i>-13%</i>
				<i>TOTAL for Month</i>	<i>374,281</i>	<i>312,775</i>	<i>-16%</i>

Division of Parks and Recreation					
March Revenue by Item					
	2021		2022		%
	Number	Dollar	Number	Dollar	Change
Annual	2,588	\$ 93,168	2,137	\$ 76,914	-17%
2nd Annual	285	\$ 5,130	215	\$ 3,870	-25%
Combo	3,115	\$ 168,210	2,427	\$ 131,076	-22%
Transferable	264	\$ 21,102	188	\$ 15,040	-29%
Daily License	1,251	\$ 10,009	945	\$ 7,560	-24%
Unattended Vehicle Daily	51	\$ 769	30	\$ 450	-41%
GSM Annual Trail Pass	459	\$ 6,885	207	\$ 3,105	-55%
GSM Daily Trail Pass	96	\$ 384	24	\$ 96	-75%
Motorcoach Permit	-	\$ -	-	\$ -	
CSP 7 Day Pass	2,133	\$ 42,661	2,210	\$ 44,200	4%
CSP 7 Day Bike Pass	1	\$ 10	-	\$ -	-100%
Rally Bike Band	-			\$ 50	
One-Day Special Event		\$ 300	0	\$ -	-100%
PERMITS	10,243	\$ 348,628	8,383	\$ 282,361	-19%
Camping Services		\$ 2,277,575		\$ 2,116,184	-7%
Picnic Reservations		\$ 1,470		\$ 780	-47%
Firewood	95	\$ 569	41	\$ 246	-57%
Gift Card		\$ 960		\$ 895	-7%
Boat Slips		\$ 24,297		\$ 145,941	501%
LODGING	95	\$ 2,304,871	41	\$ 2,264,046	-2%
TOTAL	10,338	\$ 2,653,499	8,424	\$ 2,546,407	-4%

Division of Parks and Recreation					
March YTD 2022 Revenue by Item					
	2021		2022		%
	Number	Dollar	Number	Dollar	Change
Annual	4,153	\$ 149,516	4,720	\$ 169,906	14%
2nd Annual	430	\$ 7,740	391	\$ 7,038	-9%
Combo	4,700	\$ 253,800	4,945	\$ 267,048	5%
Transferable	407	\$ 32,594	380	\$ 30,400	-7%
Daily License	2,486	\$ 19,884	2,129	\$ 17,032	-14%
Unattended Vehicle Daily	134	\$ 2,004	43	\$ 645	-68%
GSM Annual Trail Pass	711	\$ 10,665	459	\$ 6,885	-35%
GSM Daily Trail Pass	317	\$ 1,268	234	\$ 936	-26%
Motorcoach Permit	43	\$ 130	85	\$ 255	96%
CSP 7 Day Pass	3,501	\$ 70,025	3,179	\$ 63,580	-9%
CSP 7 Day Bike Band	1	\$ 10	-	\$ -	
Rally Bike Band	13	\$ 250	-	\$ -	-100%
One-Day Special Event		\$ 300		\$ 50	
PERMITS	16,895	\$ 548,186	16,565	\$ 563,775	3%
Camping Services		\$ 3,563,813		\$ 3,509,570	-2%
Picnic Reservations		\$ 3,670		\$ 980	-73%
Firewood	130	\$ 779	71	\$ 426	-45%
Gift Card		\$ 3,535		\$ 4,008	13%
Boat Slips		\$ 188,156		\$ 186,237	-1%
LODGING	130	\$ 3,759,953	71	\$ 3,701,221	-2%
TOTAL	17,025	\$ 4,308,139	16,636	\$ 4,264,996	-1%

RESOLUTION 22 - 06

WHEREAS, the State of South Dakota (held by and for the use and benefit of the Department of Game, Fish, and Parks (GFP)) owns an interest in real estate described as:

W $\frac{1}{2}$ SE $\frac{1}{4}$ and E $\frac{1}{2}$ SW $\frac{1}{4}$ of Section 7 and NE $\frac{1}{4}$ NW $\frac{1}{4}$ of Section 18, all in Township 123 North, Range 56 West of the 5th P.M., Day County SD; containing 200 acres, more or less, hereinafter referred to as GFP PROPERTY, which is valued at \$244,000.00; and

WHEREAS, Earl Althoff, Trustee of the Earl Althoff Revocable Living Trust (ALTHOFF), 44474 139A Street, Waubay, SD 57273, owns an interest in real estate described as:

E $\frac{1}{2}$ SW $\frac{1}{4}$ of Section 8 and NW $\frac{1}{4}$ of Section 17, all in Township 123 North, Range 56 West of the 5th P.M., Day County SD, containing 240 acres, more or less, hereinafter referred to as ALTHOFF PROPERTY, which is valued at \$244,000.00; and

WHEREAS, South Dakota law (SDCL 41-2-29.2) provides that GFP has the power, authority, and duty to trade or exchange real property owned by the State and held by GFP if the GFP Commission shall first determine that real property more suitable to GFP purposes may be obtained by an exchange, provided the parcels of real property to be exchanged are of equal value; and

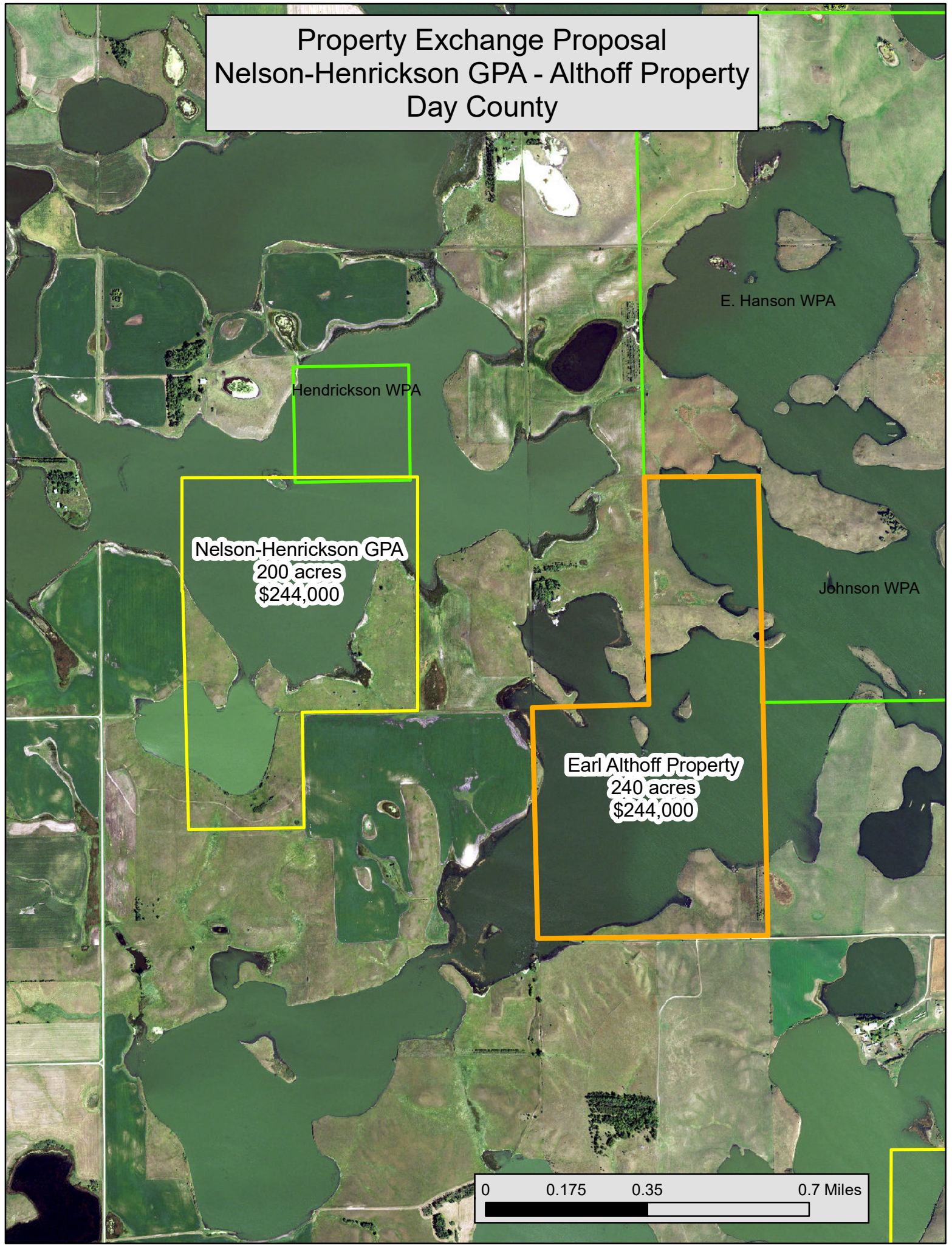
WHEREAS, GFP and ALTHOFF desire to exchange interests in GFP PROPERTY and ALTHOFF PROPERTY, and the GFP Commission having determined that ALTHOFF PROPERTY is more suitable to GFP for GFP purposes than GFP PROPERTY, and that GFP PROPERTY and ALTHOFF PROPERTY are of equal value as determined by a qualified appraiser; and

WHEREAS, South Dakota law requires that the conveyance of GFP PROPERTY be approved and executed in the manner provided by SDCL 5-2-11.

NOW, THEREFORE, BE IT RESOLVED that the GFP Commission hereby takes final action on and approves the above referenced exchanges of the above described parcels of real property and hereby directs GFP to take all steps necessary to effectuate the exchange of GFP PROPERTY for ALTHOFF PROPERTY under procedures mandated by statute.

BE IT FURTHER RESOLVED that the GFP Commission does hereby ratify and confirm the Department's designation of the ALTHOFF PROPERTY being acquired pursuant to the exchange authorized by this Resolution for utilization by the Division of Wildlife for the purpose of game production and, further, does hereby expressly designate and classify the ALTHOFF PROPERTY being acquired pursuant to the exchange authorized by this Resolution for use as a game production area.

Property Exchange Proposal Nelson-Henrickson GPA - Althoff Property Day County



Hendrickson WPA

E. Hanson WPA

Nelson-Henrickson GPA
200 acres
\$244,000

Johnson WPA

Earl Althoff Property
240 acres
\$244,000



License Sales Totals

(as of March 29)

date updated: 30 March 2022

Resident	2019	2020	2021	3-yr Avg	2022	2022	+/- Licenses		+/- Revenue		% Change
						Revenue	2021 vs 2022	3-yr Avg vs 2022	2021 vs 2022	3-yr Avg vs 2022	from 3-yr Avg
Combination	18,751	22,644	24,529	21,975	27,987	\$ 1,539,285	3,458	6,012	\$ 190,190	\$ 330,678	27%
Junior Combination	1,405	2,056	2,175	1,879	0	\$ -	-2,175	-1,879	\$ (58,725)	\$ (50,724)	-100%
Senior Combination	4,572	5,526	6,565	5,554	6,918	\$ 276,720	353	1,364	\$ 14,120	\$ 54,547	25%
Small Game	978	1,015	1,216	1,070	2,117	\$ 69,861	901	1,047	\$ 29,733	\$ 34,562	98%
Youth Small Game	471	573	622	555	900	\$ 4,500	278	345	\$ 1,390	\$ 1,723	62%
1-Day Small Game	243	210	360	271	150	\$ 1,800	-210	-121	\$ (2,520)	\$ (1,452)	-45%
Migratory Bird Certificate*	8,583	9,774	9,832	9,396	5,277	\$ 26,385	-4,555	-4,119	\$ (22,775)	\$ (20,597)	-44%
Predator/Varmint	697	722	649	689	1,227	\$ 6,135	578	538	\$ 2,890	\$ 2,688	78%
Furbearer	2,141	2,262	2,703	2,369	2,543	\$ 76,290	-160	174	\$ (4,800)	\$ 5,230	7%
Annual Fishing	8,482	13,236	13,830	11,849	15,576	\$ 436,128	1,746	3,727	\$ 48,888	\$ 104,347	31%
Senior Fishing	2,406	3,379	4,157	3,314	4,092	\$ 49,104	-65	778	\$ (780)	\$ 9,336	23%
1-Day Fishing	377	642	640	553	558	\$ 4,464	-82	5	\$ (656)	\$ 40	1%
RESIDENT TOTALS =	49,106	62,039	67,278	59,474	67,345	\$ 2,490,672	67	7,871	\$ 196,955	\$ 470,379	13.2%

Nonresident	2019	2020	2021	3-yr Avg	2022	2022	+/- Licenses		+/- Revenue		% Change
						Revenue	2021 vs 2022	3-yr Avg vs 2022	2021 vs 2022	3-yr Avg vs 2022	from 3-yr Avg
Small Game	2,476	2,554	5,246	3,425	4,208	\$ 509,168	-1,038	783	\$ (125,598)	\$ 94,703	23%
Youth Small Game	105	118	231	151	289	\$ 2,890	58	138	\$ 580	\$ 1,377	91%
Annual Shooting Preserve	43	44	67	51	89	\$ 10,769	22	38	\$ 2,662	\$ 4,558	73%
5-day Shooting Preserve	612	759	998	790	1,177	\$ 89,452	179	387	\$ 13,604	\$ 29,437	49%
1-day Shooting Preserve	154	172	181	169	191	\$ 8,786	10	22	\$ 460	\$ 1,012	13%
Spring Light Goose	2,280	2,872	4,238	3,130	3,841	\$ 192,050	-397	711	\$ (19,850)	\$ 35,550	23%
Youth Spring Light Goose	70	120	156	115	298	\$ 7,748	142	183	\$ 3,692	\$ 4,749	158%
Migratory Bird Certificate*	140	180	359	226	197	\$ 985	-162	-29	\$ (810)	\$ (147)	-13%
Predator/Varmint	633	630	705	656	685	\$ 27,400	-20	29	\$ (800)	\$ 1,160	4%
Furbearer	5	6	4	5	3	\$ 825	-1	-2	\$ (275)	\$ (550)	-40%
Annual Fishing	4,748	6,674	8,870	6,764	12,464	\$ 835,088	3,594	5,700	\$ 240,798	\$ 381,900	84%
Family Fishing	1,503	1,989	2,505	1,999	0	\$ -	-2,505	-1,999	\$ (167,835)	\$ (133,933)	-100%
Youth Annual Fishing	200	252	342	265	0	\$ -	-342	-265	\$ (8,550)	\$ (6,617)	-100%
3-Day Fishing	2,827	3,256	3,034	3,039	3,406	\$ 126,022	372	367	\$ 13,764	\$ 13,579	12%
1-Day Fishing	1,272	1,757	3,508	2,179	4,832	\$ 77,312	1,324	2,653	\$ 21,184	\$ 42,448	122%
NONRESIDENT TOTALS =	17,068	21,383	30,444	22,965	31,680	\$ 1,888,495	1,236	8,715	\$ (26,974)	\$ 469,226	37.9%
GRAND TOTALS =	66,174	83,422	97,722	82,439	99,025	\$ 4,379,167	1,303	16,586	\$ 169,981	\$ 939,605	20.1%

	2021	2022	+/- Licenses	+/- Revenue	2022 Revenue
Resident Habitat Stamp	54,098	59,784	5,686	\$ 56,860	\$ 597,840
Nonresident Habitat Stamp	28,418	29,096	678	\$ 16,950	\$ 727,400
Totals =	82,516	88,880	6,364	\$ 73,810	\$ 1,325,240

*The license year for Migratory Bird Certificates changed in 2021 so license sales are not comparable between years.