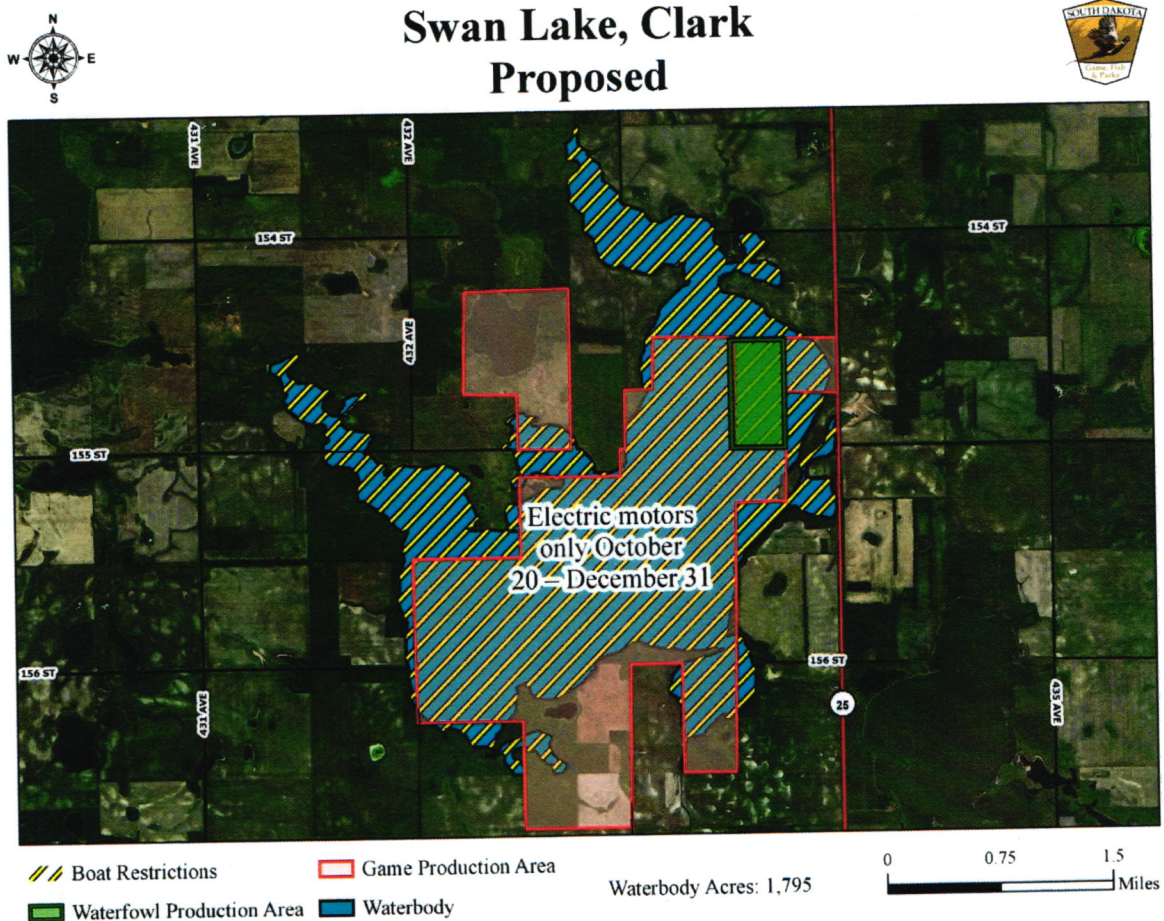


## COMMISSION PROPOSAL

### ACTION ITEM #20

#### Recommended changes from last year:

- 22) Add "electric motors only" zone on Swan Lake in Clark County from October 20 – December 31.



## DEPARTMENT RECOMMENDATIONS

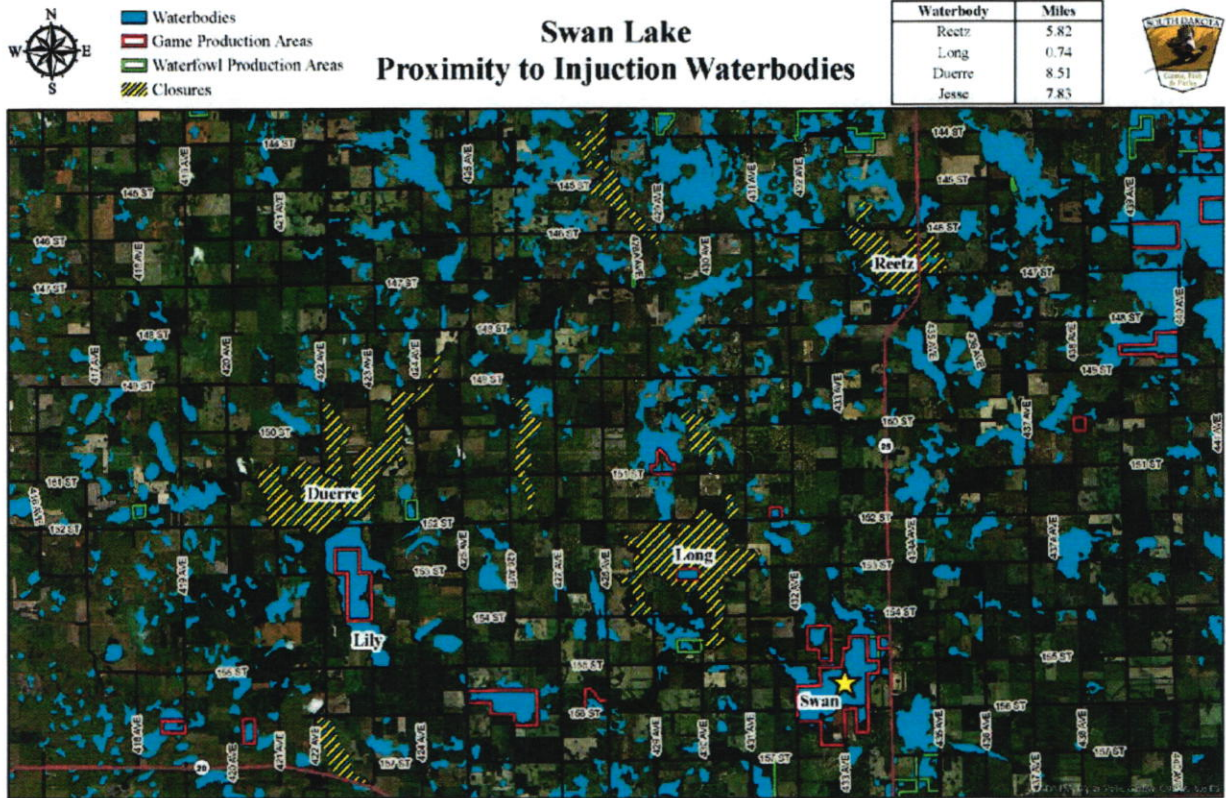
Reject the Swan Lake Commission proposal.

## STAFF COMMENTS

This change would limit recreational opportunities and contradicts information outlined in the criteria document used to justify the elimination and/or modification of other boating restrictions and refuges. Key criteria to consider:

- 1) 13.1% (10,390 acres) of the landscape is covered with water within a 5-mile radius
- 2) 66% of the Swan Lake basin is publicly owned
- 3) Swan Lake has been stocked with walleye about every other year since 1998 and has been a very popular fishery for the past 20 years.

- 4) Swan Lake is a section-8 lake and the landowners that own flooded property may petition the commission to close their flooded property to recreational use.
- 5) Swan Lake is in close proximity (<10 miles) to numerous nonmeandered water closures and injunction lake closures. These closure areas already provide ample undisturbed staging areas for waterfowl because of the very limited recreational opportunities.





Public Hearing Minutes of the Game, Fish and Parks Commission  
July 11, 2018

The Public Hearing Officer Scott Simpson began the public hearing at 10:03 a.m. at the Ramkota Hotel and Convention Center in Pierre, South Dakota. Commissioners Barry Jensen, Gary Jensen, Mary Anne Boyd, Jon Locken, Cathy Petersen, Scott Phillips, Russell Olson and Douglas Sharp were present. Chairman B Jensen indicated written comments were provided to the Commissioners prior to this time and will be reflected in the Public Hearing Minutes. Simpson then invited the public to come forward with oral testimony. A second public hearing was held on July 11, 2018 beginning at 1:56 p.m. and concluding at 2:00 p.m. as no comments were received.

**Firewood Restriction**

No verbal comments

Tony Voeltz

Marion SD

tvoeltz@goldenwest.net

Why can't we bring other types of wood such as cottonwood, elm, applewood that is not affected by the bug?

**Fall Turkey**

No verbal comments

Douglas Leighton

Bruce SD

dougleighton@dakotahgold.com

is this a one year proposal? what happens when we get back into a dry cycle and water levels recede

Berdette Zastrow

Grenville SD

bzastrow@venturecomm.net

I hunt Roberts County turkeys and there are enough turkeys to support a fall season in the ENTIRE COUNTY. Please vote yes on the proposal to open ALL OF ROBERTS COUNTY to fall hunting.

Harry Mitchell

Hot Springs SD

wanesharose1@gmail.com

if you need to quit turkey tags in pennington and Lawrence counties, please don't reduce black hills tags by 200 or at all. we have a lot of turkey in southern hills, but now we will have all northern hunters down here , and that will make it less chance of hunters here getting tags. thank you.

**Archery Equipment Restriction**

Ron Kolbeck, SDHEIA, Salem, SD, if you take away both the education requirements and equipment restrictions this will give no guidance from the commission to the bow hunters should be utilizing in the field. #3 arrow rests that have more than 3 inches touching the arrow understands this is a way to get around auto load bows system in which the bow automatically loaded the next arrow into the bow and this was a way to get around that. Electronic devices deals with devices for the taking of game not recording of the hunt. Devices that measure the distance to the target that will automatically set your sight pin to

that distance will encourage people to take longer shots. Doesn't see this as a restriction. These are not used often and do not have a need in hunting. #6 Compound bows with let off of more than 80 percent was to keep up with Pope & Young and their ethics committee and they continue to maintain this and he recommend this as well. Compound bow shorter than 28 inches measuring top to bottom this is a concerns because the industry measures axle to axle he doesn't have a problem with this one being removed because of the way it is being measured today. Telescopic sights similar to scope on a gun by magnifying the target. They are mainly used in target competition where people are shooting up to 100 yards in distance. We don't want to promote people taking 100 yard shots in a hunting situation there are just too many variables that make it unethical and increase the likelihood of wounded game. Arrow including attached broad head wing weighing less than 275 grains when hunting big game animal go with poundage listed below is really a matter of having the proper penetration Need weight to carry arrow through animal. Need to have the two in conjunction to really be effective. An arrow that is less than 26 inches longs measured from the knock to the end of the shaft along with the length of the bow restrictions and education we had people shooting bow's out of vehicles. This was a restriction to help stop people from shooting from a vehicle with a bow is why this was put into place.. Arrow board head we need to have that. poundage we currently have now with the difference between mechanical board head and fixed wing broad head every state has done this differently and we have done this different for elk and deer I think that is important that we keep that in mind because quite honestly at 40 pounds most mechanical broad heads are not going to preform appropriately. Those state that have different poundage for elk have went to 50 pounds not 40 pounds required for elk. The other big difference is if you are shooting a long bow or a compound bow. No change there as well..

Jim Twamley, SDBI, Parker, SD, personal response concern is bow hunter since early 80's harvesting variety of animals. Was an original bow hunter education instructor, master trainer and finally state coordinator and president of SDBI. During time as president worked on list of requirements to provide ethical and safe harvest without impairing hunters by restricting accessibility. Proposed changes go against ethical pursuit and harvest of big game animals in South Dakota. Removal of education took away learning curve away from the new bow hunters coming into the sport. That program dealt in depth with shot placement and ethical shots. Safe and practiced way of harvesting an animal and where is the vital on an animal and what do you have to do to get that animal to die quickly after an arrow shot. This process during bow hunter education is what we spent three to four hours on every class. What is a legal broad head and lots of discussion on this and harvesting an animal Since the national bow hunter education database inception through last year South Dakota averaged around 900 new bow hunters a year. If they took the course he figured they became a bow hunter. I don't see where the current restrictions we have in place limited anyone from becoming a bow hunter. Bows now days you purchase go from 22 inch draw length up to 30 inch draw length. It goes from 30 lbs to 70 lbs saying designing a bow you are preventing someone from getting into it. They can buy a bow and all the manufactures have that range. We have to limit in his opinion the draw weight and implement selection used to cleaning, safely and humanely harvest a big game animal.

Dana Rogers, Secretary SDBI, Hill City, SD, difficult to understand things by mathematics, kinetic energy, weapons. We have minimum calibers for hunting big game with bow hunting it has to be blood loss. Concern with lighter arrow shaft example instead of throwing a baseball your throwing a wadded up piece of paper with a 40 lb. draw weight and lighter/shorter shaft the law currently stipulates for big game for using expandable

broad head. If all of these past people would be allowed to do this on a big game animal that it would not work on, it would just not penetrate. The wording of big game is critical. Open to quite a few of the changes. AMO (archery manufacture organization) sent all this info out to the states to request these changes We can't bait in South Dakota but you can go into Cabela's/Scheels and buy any manner of mineral salt. Just because legal to sell not legal to use. When you get a speeding ticket the officer has discursion. He doesn't have to write a speeding ticket. These are discursionary starting points in our opinion. That is not making someone an illegal person or criminal but it is an ethical starting point when talking about kinetic energy when talking about getting the shaft to enter an animal and do what it is supposed to do. Do we want to give people more opportunity to take shots they are not really capable of doing with that electronic sight or telescopic sight. Even more dangerously do we want to put a weapon in the hands of someone that is really not capable of doing a job on that large animal because of not having bow hunter education anymore?

Jim Twamley, SDBI, provided broad heads they are legal for use in South Dakota. The original design said to be metal construction with two cutting blades. With the new definition they are plastic with expandable blades. Unfortunately our big game regulations apply from everything from a turkey to an elk. That is why we feel the definition of a broad head and arrow and draw weight of the bow need to be larger in order to cleanly ethically, humanly harvest the game we are pursuing.

Jake Leike, Garden City, SD, mainly he would like to address minimum arrow and draw weight. Doesn't think it is a good idea to remove these. Can cause a significant increase in wounding and not recovering animals due to penetration abilities of the arrow. Talked about calculating kinetic energy and amount of foot pounds to harvest animals. With current GFP minimums bow hunters are not producing enough kinetic energy to kill medium/large game. Lowing draw weight and arrow weight minimums will be detrimental to the aiding of overall recovery of big game animals.

Trent Koistinen  
Marion, SD  
Thanks for the September 1st Archery opener.

Dana Rogers  
Hill City SD  
dana.rogers.1@hotmail.com

As a lifelong South Dakota Bowhunter, International Bowhunters Education Federation Instructor and Pope and Young Club member, I oppose the vast majority of changes proposed to our archery equipment recommendations. Electronics on the bow that aid in the taking of game such as a range finding sight allow way too much technology and 'could' lead to people taking longer shots than they are capable of. Allowing telescopic sights on a bow the same. Elk are a VERY large and tough big game animal and allowing a slight draw weight bow to use an expandable that REQUIRES more Kinetic Energy to open and penetrate is a dangerous and ethical challenge. The arrow weight grain, arrow length, draw let-Off and axle to axle length are iffy topics with all the new technology being created but we need to have minimum standards to keep archery seasons as 'primitive' and short range as possible. Just because the Archery Trade Association (manufacturers) can produce something to sell, does NOT mean we should make sweeping changes. I'm very concerned about allowing too many technological advances in the aiding of taking game as I really enjoy our seasons and opportunities and I would hate to see the success

rates jump too high due to ease of use/harvest and thus possibly lose opportunities in the future during our archery seasons.

Anthony Filholm  
Brookings SD  
anthonyfilholm@hotmail.com

Most of the equipment changes are understandable but there a couple I take issue with. The most notable is the allowance of mechanical broadheads for taking elk or deer with lower poundage bows. I do not mean to educate you but mechanical broadheads require more kinetic energy to work consistently. They need to be driven faster with more power. I suggest not allowing their use with any bow that draws less than 50 lbs. It is more an energy question than which species you use them on. Use of electronic gear attached will lead to people using laser range finding auto aiming sights that will lead to more long range shots being attempted with an increase in wounding losses. Archery is supposed to be about how close you can get to your game, not how far you can shoot it at. Please reconsider these two items. Thanks for your time.

Bill Antonides  
Aberdeen SD  
billantonides@abe.midco.net

I can go along with the proposed changes for archery seasons but would like to make a point: Archery hunting should stop during the regular rifle seasons. If it continues to be allowed, archers should also wear orange. Frankly, I think this past loosening of rules is foolish and begs for the less ethical among us to break the rules. It was a mistake to allow archery hunting during the rifle season in the first place, and it is time to fix it.

Kevin Morgan  
Spearfish SD  
doc\_nagrom@yahoo.com

I support the proposed changes. Archery equipment continues to evolve and regulations need to adjust.

Jim Dahlberg  
Hot Springs SD  
broadheadshovel@yahoo.com

Having archery hunted in SD since 1964 and been involved with some of these equipment restriction proposals, I want to explain why they were instituted. 3" rests was put in place because of a device that started to be manufactured that had a trough attached to the bow allowing a "dart" 6 - 8 inches to be shot instead of an arrow. 28" bow length restriction was put in place to keep devices that looked like slingshots from being used as archery equipment. 275 grain arrow weight is necessary to assure proper penetration when shot into big game animals. The 26" arrow shaft is also to assure proper weight for penetration. Please keep in mind that archery hunting equipment restrictions in SD have always been RECOMMENDATIONS to archery hunters for equipment that should be used to hunt big game animals in SD. Having archery hunted 54 years in SD, I have never had my archery equipment inspected by officials to assure that those published restrictions were being followed to the letter. All of the existing restrictions have been endorsed and lobbied for by experienced archery hunters belonging to South Dakota Bowhunter's Incorporated. Please keep these recommendations for archery equipment in place. Thank-you. Jim Dahlberg



Roy Oberle  
Mellette SD  
coberle@nvc.net

I have been a bowhunter in this state since 1974 and have been actively involved in several bow hunting organizations over the years. I am opposed to the currently proposed archery equipment proposal. The restrictions currently in place on equipment were well thought out when implemented for various reasons. I would suggest the department review the Pope & Young Club's current equipment restrictions for guidance to proper bow hunting equipment. I hope the department isn't, "selling out" to the AMO, Archery Manufactures Organization, in considering this proposal. Thank you for your time and consideration of this matter.

### **Refuge and Boating Restrictions**

Roger Hatling, Pierre, SD, concerns with Swan Lake as 80 percent is owned by the state as a WPA and to close during hunting season is not good. Working to bring in the youth then we close the WPA. Needs to be left open for boating and for gas and electric trolling motors. To navigate water like that with a trolling motor it is dangerous. Recommend only closing private area.

George Vandell, SD Waterfowl Association president, Pierre, SD, comments are general in nature and applaud the commission for taking a look at this issue. Refuges have a tendency to separate a public resource to public land/access leaving you with difficult decisions. Will point out that the dept. is looking to find additional public access working with dept. to find locations with minimal work could provide better access for GPA or WPA. Swan Lake action sheet shows a tremendous area for waterfowl refuge. NM waters identified over 600,000 acres that can provide resting areas for waterfowl. 250,000 acres are currently open to the public but could be closed. Landowners can choose to provide nesting area. Waterfowl don't leave South Dakota because of hunting pressure. Hunted the state his whole life. Waterfowl leave when the weather is bad but do not leave because there is not a resting area. They move from one resting area to another. Whitewood was his favorite place to duck hunt as a kid. Whitewood Lake would see an astounding number of ducks before it was turned into a refuge in the 1970's for snow geese. Recommends removing the refuge status from Whitewood. Valid attempt to use electric motors the thought is kind, but questions the safety. Outboard motors are an ideal and safe way to recreate and are more and more quiet. Have bailed people out with electric motors as they do not have the horsepower and thrust to navigate waters safely when the wind comes up.

John Simpson, Pierre, SD I happen to be a waterfowl hunter for a long time (65 years) Swan Lake proposal. To simplify administrative rule and amplify opportunity except for Swan Lake it talks about reducing waterfowl disturbance. 35 years on the Missouri River waterfowl refuges and dislikes waterfowl refuges they don't perform their intended result and they limit public opportunity. In reality they benefit adjacent landowners and not the public or the resource. Opposes Swan Lake Refuge proposal.

Chris Hesla, SDWF, exec director, opposed to Swan Lake Refuge because non-meandered has been a fight! Swan Lake is not doing anything wrong. The landowners need the roads open to move equipment and safety issues with ambulances getting in

there. Swan Lake is a fine example of public waters and private being needed great public boat ramp there that doesn't block any of the road way for use to public water. Urge not to apply any restrictions to this lake as it is a prime example of local interest and public interest working together and we need more of those.

Charlie Rokusek, 29/90 Sportsman Club, Sioux Falls, SD, Lardal Slough Hanson/ McCook County area and Silver Lake Hutchinson County. Our club met last night and support existing regulation on these lakes as they provide an area for nesting. Grew up on farm SW of Silver Lake and it provided hunting opportunities and is again after several years.

John Heylens Volga SD

Comment: Please keep the East Oakwood as a refuge as West Oakwood can be fished and the migrating and local birds need a resting point in our area. People can fish from shore if they would like. There is plenty of lake access.

Jim Gruber Estelline SD jgruber148@yahoo.com

Comment: I can only ask why? waterfowl will fly from the sight of a boat with or without an electric or gas operated boat.. most duck boats are large and require a gas motor to get to their hunting spots. little is gained by this proposal except that less people will be on the lake simply because they want to avoid the hassle and the expense . bad proposal.

Stephen Gehring Watertown SD SHGEHRING@GMAIL.COM

Comment: Two comments:

I strongly oppose the electric motors only on Swan Lake. This is a popular fishing lake large enough for big boats.. The last few years the winters have come late.

On Horseshoe Lake in Codington County a better restriction would be to limit motorized boating to the area around the public hunting peninsula and island. I doubt the safety of an electric motor on a windy day.- at least not my motor.

Thank you for your consideration

Stephen Gehring Watertown SD SHGEHRING@GMAIL.COM

Comment: I did not make clear that gasoline motors should be allowed on Horseshoe Lake in Codington County but should be restricted to the access and around the public hunting peninsula/island. A few years ago a hunter was almost drowned at Waubay NR where a small craft was mandated

Suzan Nolan Rapid City SD kensuz49@gmail.com

Comment: Bear Butte is at the foot of a sacred mountain. It's a small lake used for fishing boats. I heartily oppose boats larger than small fishing boats that do not leave a wake used on this small and serene lake

Jim Gruber Estelline SD jgruber148@yahoo.com

Comment: the more I read on this the worse it seems.. 1-where did this electric motor only proposal come from/why/purpose/ 2-this whole thing has been a ploy by some wealthy and influential land owners to create their own private shooting area at the expense of the small time hunter and fisherman. it has been opposed by 90% of all involved, yet for some



reason it keeps reappearing.. cant we ever leave well enough alone? pheasants are gone, waterfowl will be next.....

Clint Oedekoven Sturgis SD Coedekoven

Comment: I would like to see 25 horse motor restriction stay in place.

Justin Allen Pierre SD

Comment: I'm totally against any type of boating/motor restriction on Swan Lake. I live in Pierre now but moved from Florence so I know the area extremely well. The couple landowners pushing this move want nothing but better hunting for themselves and the folks they guide on said land. I find it tough to believe they care about anyone else. A large portion of the lake is public and this boating restriction will make waterfowl hunting hard to access. IMO this move is another land grab that only further commercializes waterfowl hunting in SD. Don't get me wrong waterfowl refuges are great in certain areas but not on a body of water that is largely public land under and surrounding the lake. Please leave Swan Lake as is.

Terry Amy Watertown SD tja19@abe.midco.net

Comment: I strongly oppose the proposal for Swan Lake. The only reason this is even being considered is because of wealthy landowners on the north side of the lake that want to improve hunting on their land. With the GFP losing access to many lakes we need to be looking at providing more opportunities for hunting and fishing, not limiting them. With the climate change, the main migration is not here until late November anyway. This is a great fall walleye fishing lake, lets leave it that way. Don't take away opportunities for average sportsman to appease wealth special interest.

Jeffrey Liudahl Pierre SD

Comment: Dear Commissioners: I'm writing to comment on the proposal to limit boating on Swan Lake in Clark County, South Dakota to electric motors only from Oct. 20 - December 31. As you recall, this matter was discussed last year and then tabled for consideration in June 2018. Public sentiment was approximately 95% opposed to the proposal of not allowing boating on Swan Lake from Oct. 20 - Dec. 31. What has changed?? Adding a little twist to the proposal by allowing electric motors changes nothing! How is a diver hunter such as myself, going to use an electric motor to travel the distance required to hunt, and then return to the boat landing in inclement weather and wind? This presents a liability issue along with obvious safety concerns. Reliable sources tell me that commissioner Doug Sharp from Watertown resurrected This proposal in spite of strong opposition. Please review and study the duties of a game commissioner. Representing all sportsmen, not just a privileged few should be the goal at all times. This proposal stinks to high Heaven! My hope is that the game commission will see that it fails. Thank you very much.

Marty Mack Watertown SD Macklandsurveying@gmail.com

Comment: I believe that you will be putting people at risk by allowing only electric motors during hunting season. Most of the good waterfowl hunting is during times of adverse weather. By allowing only electric motors people may be in danger of not getting back to there starting point or worse yet capsizing their boat. There were 2 young men who died near Brookings and it would be a tragedy if anything like this happened again

Nate Anderson Webster SD

Comment: I'm opposed to any type of motor/boating restriction on Swan Lake in Clark Co. This again is another push by SD GFP commission to commercialize waterfowl hunting in SD. Just last year a petition was submitted by M&E Land Co of Watertown to close the lake in fall. You received tons of comments against the move. Now Mr. Sharpe of Watertown has proposed basically the same thing. Personal agenda? Read the comments from last year if you want to know how everyone feels about a motor/boating closure/restriction on Swan Lake. Leave the lake as is and vote against the Swan Lake proposal

David Hegg Watertown SD dhegg@wat.midco.net

Comment: This concerns a proposal that will be considered at the July Game, Fish, and Parks Commission meeting regarding the use of motorized boats on certain lakes during the waterfowl season in South Dakota. The lakes in Codington County included in this proposal are...McKilligan Lake, Long Lake, and Horseshoe Lake. The proposal would allow the use of boats with "electric motors" to operate on the permitted lakes during the waterfowl season. I am adamantly opposed to this measure.

It is a well known fact the aforementioned lakes have served as a resting place for significant numbers of migrating birds each fall for many years. The result of this has been that many hunters have benefited from having waterfowl to hunt in a large area of NW Codington County. As the birds move back and forth each day to feed in area fields or to transit to other bodys of water, many hunters realize the benefit of having access to the birds to hunt they wouldn't otherwise have. I say this because if the birds are continually harassed and chased off those lakes, the result will be far fewer birds held in this area to hunt for everyone. They will simply move elsewhere to rest. As it is now, many hunters hunt over decoys in area fields or simply enjoy pass shooting in area road ditches. Hunting as we currently know it will most definitely change if this passes.

In some years, the numbers of migrating ducks and geese arrive in large numbers and hold on these lakes until weather finally drives them out. My fear with this proposal is that the boats will accomplish what nature does but much sooner. The result of that will be fewer birds available to hunt and for a much shorter duration. If GF&P staff didn't believe that boat traffic will disturb the birds, why does GF&P ban boating on most of Long Lake (a decent walleye fishery) in the spring and summer. Their publicly stated reason is so that nesting waterfowl are not disturbed. Nesting vs resting, there isn't much difference.

While I am a staunch proponent of public access, I am convinced this proposal will do more harm to the public's access to the waterfowl than help. I have personally seen what motorized boats can do to the resting waterfowl on Horseshoe Lake. They drive the off birds in mass numbers and if accomplished daily, will result in far fewer birds available to everyone. With electric motors as powerful and efficient as they now are, every corner of these large lakes will be quite easily accessed. The birds will be around for a couple of days - then they will leave and we all lose.

I'm opposed to the proposal to impose a restriction on motors/boating on swan lake in the fall. This nothing but a push by a couple landowners to better their hunting on dry fields around the lake. I'm sure the same that submitted the petition last year. The lake is mostly public and a great fall fishery. The restriction only hurts the vast majority of the users and only benefits a couple landowners. There is plenty of other roost water in the area that is closed to the public or has very limited access. I'm not sure who ever proposed this idea is really concerned about roost water or maybe just concerned about a couple landowners. Leave the lake alone.

Jean Douglas Austin Watertown SD doug@austin-hinderaker.com

Comment: Duck population in this area has been done for a number of years. Ducks and geese need a resting place where they are not harassed. Keeping a restriction on motorized boats in effect should benefit a number of hunters in the general area.

Roger Hatling Pierre SD

Comment: I've hunted in this state for 53 years. Closing this lake to boating with electric motors only in the fall not only makes it almost impossible, it makes it dangerous. At the June meeting one of your own people explained a new plan for the recruitment, retention and reactivation, closing this lake to electric motors during the peak of the migration of waterfowl is basically telling them you don't care. This WPA was paid for by sportsmen and women and should be left open. 80% of the water & the land below belong to us. If the two people in question are worried about trespassing they can post their part of the lake. As far as resting areas for waterfowl. There are many lakes & sloughs within a few miles of this lake. In closing this petition should not be passed. The SD GFP Commission is supposed to represent all sportsman and women.

Robert Rousseau Watertown, Sd 57201 SD rrousseau@wat.midco.net

Comment: RE THE PROPOSAL TO EASE BOATING RESTRICTIONS ON HORSESHOE, LONG AND OTHER AREA LAKES IN CODINGTON COUNTY, I WOULD URGE YOU TO TABLE THIS PROPOSAL. THESE LAKES HAVE BEEN WATERFOWL SANCTUARIES FOREVER AND SHOULD CONTINUE TO BE TREATED AS SUCH. I WITNESSED THE EFFECT OF BOATS ON HORSESHOE LAKE SEVERAL YEARS AGO ON THE OPENING DAY OF DUCK SEASON. IT TOOK ONLY A COUPLE HOURS FOR THE BOATS TO CHASE ALL WATERFOWL OFF THE LAKE WHICH, NEEDLESS TO SAY, HAD A PROFOUND IMPACT ON THE HUNTING FOR A COUPLE DAYS FOLLOWING. THIS PROPOSAL TO ALLOW BOATS, EVEN WITH ELECTRIC MOTORS ONLY, IS A BAD, BAD IDEA. PLEASE DON'T DO IT!

John Schultz Brookings SD jts56ford2000@yahoo.com

Comment: This refuge has been on East Oakwood since the 1950s. so no need to simplify everyone knows it. Waterfowl need a place to rest, and because of the refuge some of the best Canada goose hunting in the state is right here. Both decoy hunting and rd. right of way. Closing E. Oakwood for 3 months of the year to boating does not reduce opportunity as shore fishing is still available all year, and West Oakwood is open all year, also Lake Sinai and Lake Goldsmith are all close by. If you remove refuge and boating restriction it will ruin the waterfowl hunting opportunity for many and are in effect reducing opportunity. I am also a fisherman. Last, in many years we have freeze up by mid-November so it is only a six week boating restriction and then people can ice fish.

Joanita Kant Brookings SD jeetakant@gmail.com

Comment: If the proposed change is to "focus on increasing recreational opportunities and simplifying regulations to make it easier for sportsmen and women to participate in the outdoors in these areas," this proposal misses the mark. Each location in the entire listing for proposed changes is unique, and "simplifying regulations" is a poor reason for treating all locations alike. The current restrictions that are in place at East Oakwood have resulted in a wonderful oasis of natural beauty with a variety of wildlife. It is my favorite place to visit in the entire state. I can always expect to find an amazing variety of birds, and I consider it a bird watcher's paradise. The last thing that East Oakwood Lake Waterfowl Refuge needs is move development of any kind because of the risk of destroying this unique ecosystem when considered in its entirety. Keep in mind the word "refuge." All of the wildlife at this



place need protection from too many recreational opportunities. Don't ruin East Oakwood Lake Waterfowl Refuge by encouraging more traffic and usage than is in the best interests of preserving this incredible place of natural beauty. That is what this proposed change would do. The over-development and excessive access at some of the largest glacial lakes in eastern South Dakota should serve as examples of what happens when wild areas are not protected. Please let East Oakwood Lake Waterfowl Refuge remain one of the most beautiful wild places in the state where people can take "refuge" from too many recreational "opportunities" run amok. The proposed changes would seriously interfere with goose and duck hunting because with increased public access, the thousands of waterfowl that currently find refuge at East Oakwood would simply leave because of the disturbance. I am a licensed waterfowl hunter and fisherman, and I hunt near East Oakwood Lake, and I fish there. Those are not the primary reasons that I oppose this change. South Dakotans deserve bird refuges as places where they can go to see nature at its finest. Please read Also Leopold's Sand County Almanac before making your decision. One of his favorite quotes was, "I am glad I will not be young in a future without wilderness." Do the right thing for the upcoming generations of South Dakotans, and provide more refuges with restrictions, not fewer.

Bill Antonides Aberdeen SD billantonides@abe.midco.net

Comment: On this: Modify the Putney Slough "no boating zone" to "electric motors only" and change the date from Oct. 15- Dec.31 to Oct. 20 - Dec.31 in Brown county.

The change in dates is not a great deal, but is OK. However, IT MUST REMAIN A NO BOATING ZONE. This refuge holds untold thousands of snow geese and other waterfowl during the time frame mentioned, and one boat, motorized or not, will destroy opportunity for hundreds of sportsmen and women.

Please note the no boating restriction was placed on certain waters for a reason. If it helps the general public, the rule should remain in effect. If it serves on the provide hunting for a select few, then get rid of it..

That said, GF&P should work with townships to provide better vehicular access, even if it is just a marked, dirt road, to the GPA surrounding Putney. As it stands now, hunters might have to walk two or more miles through thick brush/rushes to reach prime hunting spots. The roads are there, just farmed over.

Gene Hakenson Watertown SD gmhakenson@gmail.com

Comment: In regards to closing Swan Lake to motorized boating for the purpose of M & E to have their own private duck shoot is ridiculous. First why hasn't this been posted in every news paper in SD, sure appears to be a hidden agenda going on here which most locals in Watertown know what it is. Most others have no idea what is trying to be passed here for their personal use to which something that sportsmen have paid to use of a lake that is well over 50 % public. I understand they have purchased this land for waterfowl hunting but I also understand that the sportsman that have purchased watercraft for other reasons outweighs what the cost of what M & E Land Company has spent for a private waterfowl shooting. Swan Lake is not a quality duck slough per say as there are hundreds of smaller sloughs that makes better habitat for roosting of waterfowl. What is going to happen when a couple of kids are shooting waterfowl out of a small watercraft with an electric motor not capable of winds or rough water on a lake of that size to retrieve something they have shot, it don't a genius to know what can happen. I grew up on a farm in Rosholt SD and received my first hunting license in 1968 and have waterfowl hunted since that time. You don't have to be a wildlife biologist to also know that the flyway has

been moving west for many years now. The state already has a seasonal refuge for waterfowl at Reid Lake which the way a bird fly's is a short distance to Swan lake area for roosting purposes. So I hope that the GFP and state declines this request, if this is granted it will only open more doors to deny access or use of public lands by all sportsmen and not just the wealthy that can go purchase land adjacent to a piece of water for personal enjoyment. Locals in Watertown already know what you will be told if you were to ask permission to hunt or fish this particular piece of property or water adjacent to it. These waterfowl fall under federal guide lines and should not be allowed for a few individuals personal enjoyment, please deny.

Merlin Jeitz Watertown SD [SDjeitz1@wat.midco.net](mailto:SDjeitz1@wat.midco.net)

Comment: We have so few ducks on these lakes and is going down steadily year after year; I don't want to have to have people in boats disturbing them any farther. Please help us enjoy SOME hunting by not allowing boats ,of any kind, on these lakes.

Betty Harper Watertown SD [ecko@vastbb.net](mailto:ecko@vastbb.net)

Comment: I'm only a woman who loves to fish, but first and foremost I believe in boat safety and only being allowed to use only a electric motor on Swan Lake on a windy day would ruin my fishing trip. You must be doing this to satisfy one land owner, your putting restrictions on this lake that is 70% public land and water, I'm only a woman, but I can tell when something is wrong. When the U S government is talking about opening parts of Sand Lake (a federal water fowl refuge) to water fowl hunting. Come on boys where is your heads at??

Megan Olson Watertown SD [olsonmegr@gmail.com](mailto:olsonmegr@gmail.com)

Comment: I am in opposition of the change to allow motorized boats on these lake Oct. 20-Dec. 31 this could have major adverse effects to the waterfowl who migrate here at limit hunting opportunities in this area!

Mike Malimanek Watertown SD [mmalimanek@yahoo.com](mailto:mmalimanek@yahoo.com)

Comment: I have hunted Swan Lake with a small duck boat, and never had an issue with disturbing the waterfowl. With all the issues involving water in South Dakota it makes no sense to shut down a lake that is mainly owned by the public. Every year it gets harder and harder to gain access to ground you can hunt on. We are discouraging our young people from hunting and fishing by too much regulation.

### **Fish Limits – Reetz Lake**

Charlie Rokusek, 29/90 Sportsman Club, Sioux Falls, SD, personally (see email) and club comments, discussed at meeting last night. Members feel setting a bad president by allowing agreement to have different limit when limits are set by the department. Strongly oppose this. Also the ability to put infrastructure if the agreement is no longer in place boat ramps and any other infrastructure that was paid by sports dollars should be removed. 5 attendees at meeting, but did discuss with other members prior to meeting who held same opinion.

John Simpson, Pierre, SD similar to previous testified. Concern with different fish limits. Was proposal for fish limits proposed by the landowner was it discussed and validated by the fisheries biologists in the area? If not it should have been. Why would landowner want

this kind of limit? Also understands there is a fee involved and difficult to ensure public access on public resource with sportsmen's dollars when landowner receives funds the water and the fish are public property. Hope you reject this proposal.

Chris Hesla, SDWF, Pierre, SD, opposed for basic reason for two different limits of fish. If you treated everyone the same would probably be in favor. Disagrees with creating two different classes of sportsmen. Not worth what landowners are proposing. Not fair and equitable to everyone throughout the year should not spend sportsman dollars Thank the Reetz family for allowing fishing, remove the boat ramp/parking lot and let them have the water.

Stephen Hay Lake Norden SD  
s.hay427@hotmail.com

Comment: Please approve the Reetz lake proposal for one year only. See how or if other landowners react to being "under paid". One year only then assess and evaluate any backlash then decide if you want to continue with the Reetz proposal or make any changes.

Jim Gruber Estelline SD  
jgruber148@yahoo.com

Comment: when we start letting landowners decide safe level harvest limits, and who will be allowed to fish it is time to say..... NO THANK YOU. and who pays for the stocking of these lakes.. hopefully the land owner from now on.. if they want so much control, i say. give it to them, and when it dries up or freezes out they can have their slough.. this nonmeandered lake thing is disgusting.. we have got to be the only place in th USA with this kind of regulation.. wondering, do the same regulations set forth by these kings apply to them also? and if so, who is going to enforce or write a ticket to one of these land owners?

Jed Bertsch Aberdeen SD  
jed.climate@gmail.com

Comment: I read that Access to Reetz lake will be open to the public for 5 months. With this will be special limit restrictions. I have also heard rumors that in or for this to happen the state is paying the land owners. What I get from this is that the state is going to pay the land owners, then pay to manage the lake for the landowners, pay to keep up the dock and launch, and then the land owners are going to restrict what the state tax payers can keep above and beyond normal regulations. Is it public record what if any payments are made and to who. I believe is state funds are being paid to private land owners it should be released to the public as well.

Shane Ellwein Fort Pierre SD  
el.wine@hotmail.com



Comment:I am not in favor of opening the lake to varied catch limits. I would love to access it again but that price is too steep. I would rather see it closed for good than grant the landowner those conditions.

Dennis Clemens

Frankfort SD dennissclemens

Comment:The GF&P should not stock or manage any lake unless it is open year round and have the same limits as the rest of the public waters.

Opening a lake for a limited time and limited harvest so the landowner can get the lake stocked by GF&P and then have people pay their guides to catch the fish while the lake is closed to the public is WRONG!!!!

Any water getting help from GF&P for stocking or management should be open access year round without limited harvest.

I am OK with Reetz remaining a trophy lake for Walleye with all the time and money that has went into doing that from the state. but the season and other harvest limits should be open like other public waters.

Mike Schortzmann Rapid City SD mjsdas@rap.midco.net

Comment:I am against the proposal by the landowners of Reetz Lake. Once we start letting landowners set rules and regulations, we open the door on many other issues. We need to explore other ways to resolve this. Blackmail is not one of them.

Benjamin Minor Webster SD Bsminor@hotmail.com

Comment:What are the total costs involved? There are 5 lakes currently open to the public within an hour drive that have better size and numbers on walleye populations.

Please no short term leasing of access. Only purchasing at fair market value(submerged for decades).

David Smith Pierre SD

davefromtn@yahoo.com

Comment:I am oppose In an effort to regain public fishing access to Reetz Lake; Game, Fish and Parks staff have been working on access agreement terms and conditions with the landowners of Reetz Lake; currently a closed nonmeandered lake in Day County. The proposed harvest restrictions meet the conditions set by the landowners of Reetz Lake and if approved, Reetz Lake would be open to public fishing from May 1 - Sept.30. Fishing access from Oct. 1 - April 30 would be open by landowner permission only.

I do not believe a landowner should set the harvest limits. The landowner does not own these fish, they are through taxpayers dollars. This is a tricky slope to go down. It suggest that the landowners own these fish.

Mark Richardson

Aurora SD

mrichar07@gmail.com

Comment:Sounds like a privatizing a public resource. Can't wait for others to follow this lead. For the past few years, GFP has been trying to make regulations more standard

across different bodies of water, this goes against that rule. I would rather see it total catch and release for all species.

Justin Allen Pierre SD

Comment: I'm against the proposed agreement to open Reetz Lake. I think the proposal to have the lake only open to the public half the year and then permission only the rest is crazy. Either open the lake or don't. Also I find it funny that GFP press release does not include the fact the Reetz's want 8k a year to open the lake for 6 months a year. If passed this paying to fish public water with sportsman dollars will send a message to all other landowners that public water are for sale. Hold the GFP hostage that landowners need money otherwise they will close the states waters. IMO if Reetz don't want to provide fishing without a huge payment then so be it.

Turn any other lake in the area into a "trophy" lake. You don't need Reetz Lake. Please do not reopen Reetz Lake under the proposed limitations and payment or anything even close to it.

Katie Hansen Watertown SD kmh20@msn.com

Comment: I oppose changing the harvest rules on Reetz, and feel the lake should remain closed. \*here is my phone number 605-956-0244 if you would like to hear my reasons.

Terry Amy Watertown SD tja19@abe.midco.net

Comment: I oppose the proposal for Reetz Lake. It would set a terrible precedent for these disputed waters. It would allow landowners to restrict what the public catches on these waters, while allowing them and their friends to catch and keep whatever they want. The landowner owns the land under the water, they do not own the water nor the fish in the water. These belong to the people of South Dakota. Leave the lake closed and keep the current restrictions on the lake. Also, since the lake was stocked by the GFP and this was paid for by sportsmen's license fees, if the landowner closes the lake, we should have the landowner reimburse the GFP for the money spent on stocking. These funds could be used to improve fishing on other lakes.

Kyle Kaskie

Aurora SD

thefishies2003@yahoo.com

Comment: The proposal for a new daily limit change and season dates for Reetz Lake, benefits the supposed landowner and does little to no good for the public access issue. This purposed change is only creating a trophy lake status for this specific lake of which will only benefit the landowner. The lake will be closed to public access during the primary fishing periods for which this lake is primarily fished (i.e. ice fishing). This only leads to a pay to play mind set which will most likely be taken advantage of down the line. This also will be than used as the precedent for future meandered waters. This is NOT how we should be trying to obtain better public access.

Brian Aker Sioux Falls SD

briandton@wat.midco.net

Comment: This is a joke. The landowner created this foolish proposal so the state maintains the boat access for his personal use.

Anthony Filholm Brookings SD

anthonyfilholm@hotmail.com

Comment: Dear Commissioners, I applaud your attempts to improve public access to these waters but I suggest you do not go down this road as you will be setting a precedent of allowing landowners to control wildlife on their land. They own the land but the public owns the wildlife. If you do this, are you ready to start making concessions allowing landowners to manage their wildlife as they see fit? I am not a fisherman but this does have an impact on all of us. Thanks for your time.

Chuck Clayton Huron SD  
clayton@hur.midco.net

Comment: This proposal should be rejected. If we start letting private landowners dictate fisheries management, which this proposal does, and give control of public fish and water to the landowners, we are going backwards. Not one dime of public money should go to private landowners that want to dictate public access!!!!

Darrin Christensen  
Watertown SD  
livetohunt@wat.midco.net

Comment: They should have to follow state laws like everyone else! I oppose them getting special treatment to open the lake!!!!

Randall Schleuter Dell Rapids SD  
Dakotaqball@goldenwest.net  
Comment: oppose.

Timothy Kaubisch Sioux Falls SD

Comment: I don't agree with SDGFP paying the Reetz family for access when it would not be open year round, we as fishermen and sportsmen had paid for the body of water along with fish in the water, we shouldn't have to pay for minimal use nor pay to fish it

Lane Hogstad Watertown SD Lhogstad@hotmail.com

Comment: If it's back open it's open all or none not a state funded winter private lake. We have given enough.

Frank Duin  
Sioux Falls SD  
f-duin@hotmail.com

Comment: I understand the landowners position on this matter, but I truly believe the landowners that Reetz Lake resides on are trying to take enormous advantage of their situation. This lake is full of large fish due to the harvest limits that were in place for years. There is absolutely zero chance that he is not accepting cash payments to fish this lake. If he wasn't, what is the purpose in changing the harvest limits? I feel if the landowners wanted it closed then leave it closed. If the GFP gives way for this landowner, what will happen with the rest that "own" other bodies of water with similar fish populations? Give in once and this entire situation will spin out of control. The changing of the harvest limits per season screams "guide payments" to me. Please leave it closed. Additionally, I have met the landowner that Goose Lake resides on, and his only complaint concerning his situation was that of people parking on the road while fishing thus making it difficult/impossible to drive farm equipment through. He then granted me access to park in his field driveway



whenever I wanted. He made the comment that the Reetz Lake "owner/owners" are out for blood. Just food for thought.

Ethan Delvo Watertown SD ejdelvo28@yahoo.com

Comment: It is an outrage and an outright disgrace to the South Dakota Game, Fish and Parks provide what is essentially a private rearing pond in the winter for the owners and their friends to harvest from as much as they please under statewide limits, while simultaneously not allowing the public to harvest under the same regulations in the summertime. This proposal does exactly this. "By permission only" is just the owners' way of keeping the lake all to themselves in the winter while being allowed to take all the limits of fish they want. This is not a compromise, this is a one-sided deal favoring the owners. I as a sportsman would like to see a compromise that allows for modest harvest limits for everyone, including friends and family of the owners, and public access allowed all year. This would allow the owners to have their share of fish while not being unfair to the public. For example, a walleye regulation of something to the effect of 2 under 20" and 1 over 28" would be a good compromise to allow the owners to have their share of fish while maintaining the trophy fishery by protecting 20- 28" fish and keeping the lake open to the public. If this "deal" goes through, it will just go to show how deep the corruption goes in our government.

Matt Schoppert Sioux Falls SD

Mattschoppert@gmail.com

Comment: I disagree with the president that this will set. It will incentivize other private individuals to push for closing off water for their own private interest.

Water is held in the public trust, the state is the trustee. I feel a misallocation of that right has already occurred and this is a continuation of that problem. No individual has superior rights, closed for one should mean closed for all, with no special interest benefiting in any capacity. I'd rather never fish Reetz again than set this precedent. Do not barter away public resources.

Anthony Volk

Aberdeen SD

Advolk8@gmail.com

Comment: Our state is becoming the laughing stock of the country the way you and our elected officials have been treating this matter. How much tax and license money had been spent stocking and maintaining Reetz Lake the last 20 years? If a landowner received any tax payer money or tax breaks for these flooded lands they should all be public.

Mark Doty Vermillion SD

doty.g.mark@gmail.com

Comment: I don't want to see one cent of my tax dollars or license fees go to private lakes that the owners have control over. There are enough other public lakes that could use that money, use it there.

Kent Jamison Aberdeen SD

Comment: If the landowner isn't going to open the lake for all, leave it closed. Plenty of other lakes in this area without caving to greedy landowners.

Dan Waldman Aberdeen SD

Comment:I am in not in favor of the proposed agreement as written and the only part I would change would be that the size restrictions would remain the same for everyone all year long. I understand the landowners wanting privacy during the winter months. This potentially could set a precedent that more landowners could use to close water and negotiate different size restrictions and limits for a select few. I would be in favor of the closing during different times of the year but not in agreement of two different sets of regulations for the public and the landowner and his select few. Thanks

Jordan Grambort  
Watertown SD  
jcg2496@gmail.com

Comment:It's great that you guys are trying to reopen the body of water, but the landowner shouldn't be able to do whatever he/she pleases on length and bag limits. If it is to open it should be open year round not only certain times of the year. If they do t want anything with that deal leave it and spend that money not spent on that lake elsewhere where landings or lakes that need it more. I've fished reetz lake many times and it was fun fishing but if the landowner isn't going to budge I have no problem launching my boat elsewhere

Randy Albright Rapid City SD  
randyalbright2011@Gmail.com

Comment:As long as South Dakota deems water private ownership, No public monies should be spent in management of said water. If 100% public access is permitted YEAR ROUND then state monies should be allocated to managae the water and protect sportsman from illegal private interests.

David Brown Humbolt SD  
daveandris@outlook.com

Comment:If public funds are used to maintain the fishery at Reetz lake, it should abide by statewide regulations at all times. If it is not open to public access at ANY time during the year, NO public funds should be used to maintain this fishery.

This proposal is nothing more than using public funds to build an maintain a well stocked, private ice fishing location for the landowner and whomever he grants / sells access to. This is not in the best interest of the sportsman and not what GFP should be spending it's funding doing. If a compromise cannot be reached that keeps the fishery open to the public at all times, all control and financial responsibility should be immediately withdrawn by GFP and transferred to the landowner.

Derek Garner Willow Lake SD  
garner670@gmail.com

Comment:This is setting a bad presidence for other bodies of water . Do not want the state to waste money on stocking and renting a lake that you cannot fish year round . If the landowners want to fish it in the winter and take what they want then the general public funding the lake has the same right . This is a bad deal and please consider the public sportsman for once . The non meandering water issue is already bad enough. Don't make it worse and consider the public for once . Thank you

Char Schleuter, Dell Rapids, SD dakotaqball1226@gmail.com

Comment:We have rights and game and fish have put our tax dollars into these lakes.

Alex Vogel Aberdeen SD  
alex\_vogel99@hotmail.com

Comment: It is absolutely ridiculous to let the person who owns land underneath the water dictate regulations for the fish in that body of water. It seems all of our legislators have forgotten that the water is owned by the PEOPLE, not the landowner. Guess we are saying those are his fish too since we are allowing him to dictate terms. I am done fishing any lakes over that way. Landowners apparently are more valuable than anyone else in this state.

Cary Leibeg Chester SD  
caryleibeg@yahoo.com

Comment: This is not ok, I can tell by the proposal this land owner plans on limiting fish for summer in hopes more will be available in winter. I guarantee he plans on denying access to the lake unless you pay or he plans on renting ice houses out. He wants the limits off in winter because no one would rent or pay for those highly restricted limits. This will open it up for all other "land owners" to do the same. Vote against this!

Steve Schull Watertown Sd SD  
sandpschull@gmail.com

Comment: why close it thru the winter does not make any sense try to get permission where do you find this person probably get turned down anyway wants for own personal use is not fair to any one but the reetz buddies

Sammi Blood Pierre SD  
missdolli.sd@gmail.com

Comment: Why do landowners get to set the seasons and the harvest regulations for a lake? If there's any reason other than their own financial gain, I would like to know it. The sportsmen should have an equal voice in what happens with the lakes/seasons, not only the landowners. If this passes it will set a precedent for others to take advantage of the sportsmen.

Tim Gaikowski  
Webster SD  
Tgaik77@hotmail.com

Comment: Do not pay Reetz family or agree to those terms. That will be bad for all water just close it and remove fish to put in bitter or waubay lakes. They have been making money off that water already.

Corey Ragels Watertown SD

Comment: Open all year round or close it for all even the farmer

Landon Thompson Sioux Falls SD  
Comment: oppse

Shane Andresen Brandon SD  
shane.andresen@poet.com  
Comment: I like the proposal..

Chad Taecker Brookings SD Ctaecker@hotmail.com

Comment: I strongly oppose the path you guys are taking us down!