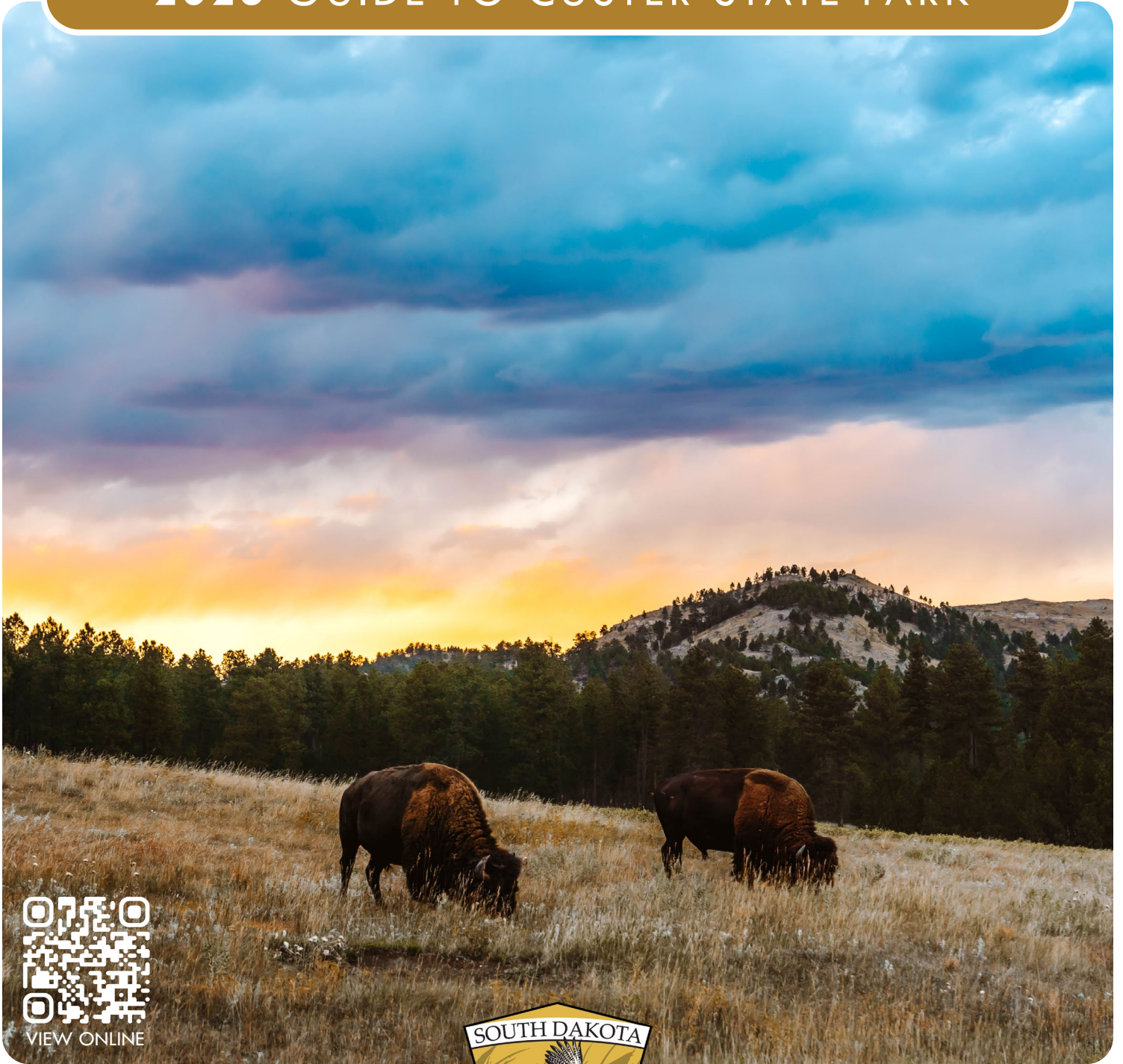


TATANKA

2026 GUIDE TO CUSTER STATE PARK



VIEW ONLINE



WELCOME TO CUSTER STATE PARK



As America celebrates 250 years of freedom and independence, Custer State Park joins in the celebration by remembering our beginning.

We are thankful to Peter Norbeck, the Father of Custer State Park, for his foresight and vision.

“Parks are not merely picnicking places. They are rich store houses of memories and reveries. They are bearers of wonderful talks to him who listen, a solace to the aged and an inspiration to the young...A state park cannot be planned until it is found.” – Peter Norbeck in a 1921 speech to the First National Conference on State Parks

The future of the park is to find that balance between preservation and use, to continually create the memories that are passed down from generation to generation. Like so many of you, my family history with Custer State Park started with my parents honeymooning here in 1954. Coming back as a kid on a family vacation when the Wildlife Loop Road was still gravel. Then visiting years later with my own family. Every time I see a buffalo, I can still hear our oldest daughter at age two, excitedly pointing and saying, “A big, big, big, buffalo.”

Fast forward, I now get to relive those times with my grandkids. Like many of our visitors, you, too, may have experienced the park in your youth and found your way back. Some with children, and some with grandchildren to pass down the tradition and create new memories to cherish.

Regardless if this is your first time or you’re a frequent user, I encourage you to get out and explore the park’s rich history. Create your own, lasting memories and celebrate the legacy of Custer State Park.

Matt Snyder
West Regional Supervisor

The *Tatanka* is published by South Dakota Game, Fish and Parks.

LARRY RHODEN | Governor of South Dakota

KEVIN ROBLING | Department Secretary, Game, Fish and Parks

SCOTT SIMPSON | Deputy Secretary, Game, Fish and Parks

Positions current at time of publication.

Photos provided by SD Departments of Tourism and Game, Fish and Parks, the U.S. Fish and Wildlife Service, and Custer State Park Regency Adventures.

250,000 copies | Midstates Printing | \$0.29 each

The mission of South Dakota Game, Fish, and Parks is to serve and connect people and families to the outdoors through effective management of our state’s parks, fisheries, and wildlife resources.



JEFF VANMEETEREN | Director, Division of Parks and Recreation

MATTHEW SNYDER | West Regional Supervisor

BROOKE SMITH | *Tatanka* Editor



CONTENTS

- 4 THINGS TO KNOW
- 6 VISITOR CENTERS
- 8 WILDLIFE
- 12 SCENIC DRIVES
- 14 PROGRAMS AND SPECIAL EVENTS
- 16 BUFFALO ROUNDUP
- 18 HIKING TRAILS
- 22 YEAR ROUND
- 24 LAKES AND STREAMS
- 26 CAMPING
- 28 CUSTER STATE PARK RESORTS
LODGING, DINING, ACTIVITIES**
- 30 STATE GAME LODGE
- 32 SYLVAN LAKE LODGE
- 34 BLUE BELL LODGE
- 36 LEGION LAKE LODGE
- 38 BLACK HILLS PLAYHOUSE
- 39 AREA STATE PARKS
- BACK PARK MAP

CAMPING RESERVATIONS

1.800.710.2267

campsd.com

CUSTER STATE PARK

Park Office | 605.394.2693

custerstatepark@state.sd.us

custerstatepark.com

CUSTER STATE PARK RESORT

Information | 605.255.4772

Reservations | 1.888.875.0001

info@custerresorts.com

custerresorts.com

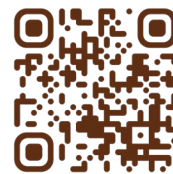
Equal opportunity to participate in and benefit from programs of the SD Department of Game, Fish and Parks is available to all individuals without regard to their race, color, national origin, sex, age or handicap. Complaints of discrimination should be sent to: SD Department of Game, Fish and Parks, 523 E. Capitol Ave., Pierre, SD 57501-3182; or to the Office of Civil Rights, U.S. Department of Interior, 1849 C Street, NW, Washington, DC 20240.

THINGS TO KNOW



2026 ROAD CONSTRUCTION

US Highway 16A within
Custer State Park is
under construction.
Visit [SD511.ORG](https://www.sd511.org) for
current information.



PARK ENTRANCE FEES

An entrance license is required for all park visitors. Only people traveling non-stop on U.S. Highway 16A and on south Highway 87 are exempt from this requirement. Entrance licenses are valid at all South Dakota State Parks.

TEMPORARY ENTRANCE LICENSE

(1-7 consecutive days)

Vehicle	\$25
Motorcycle	\$20

ANNUAL PARK ENTRANCE LICENSE

Resident	\$40
Nonresident	\$60

TWO ANNUAL PARK ENTRANCE LICENSES

Resident	\$60
Nonresident	\$90

TRANSFERABLE PARK ENTRANCE LICENSE

Residents only	\$90
--------------------------	------

MOTORCOACH LICENSE

(Valid only at Custer State park)
Per person, per visit. \$4

PARK RULES

Regulations are designed to protect both park visitors and park resources. Conservation officers enforce the park's laws and regulations.

- » **DO NOT APPROACH THE BUFFALO.**
- » Do not feed or disturb wildlife.
- » All vehicles must stay on designated roadways.
- » Drones in South Dakota state parks are permitted but must follow state park and FAA rules and guidelines.
- » Open fires are prohibited unless in a designated fire grate located in campgrounds or picnic areas.
- » Pets need to be on a leash no longer than ten feet. Pets are not allowed in any park buildings or on designated swimming beaches. Please clean up after your pet, and do not leave pets unattended. Service animals are welcome.
- » Removal of any natural or cultural features such as rocks or artifacts is prohibited.
- » Any person, regardless of their residency, who is able to lawfully possess a firearm/pistol can conceal their weapon without permit while in South Dakota.
- » Visitors are not allowed to jump or dive from bridges, rocks, or cliffs into any of the park's lakes.
- » Only state-sponsored geocaches are allowed in the park.

LOST AND FOUND

All lost and found items and records are kept at the park office. If you find or lose an item, stop at one of our entrance stations, visitor centers, or the park office and fill out a lost and found form.

SOUTH DAKOTA PARKS AND WILDLIFE FOUNDATION BECAUSE GREAT PLACES DON'T JUST HAPPEN!



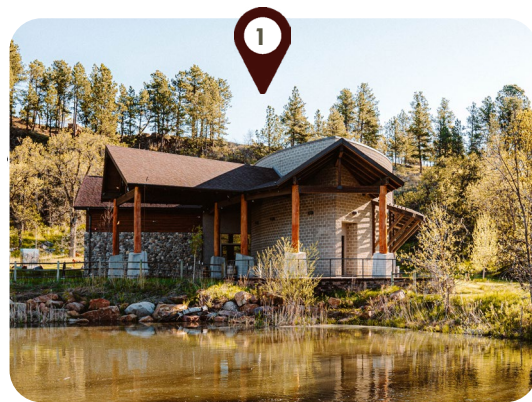
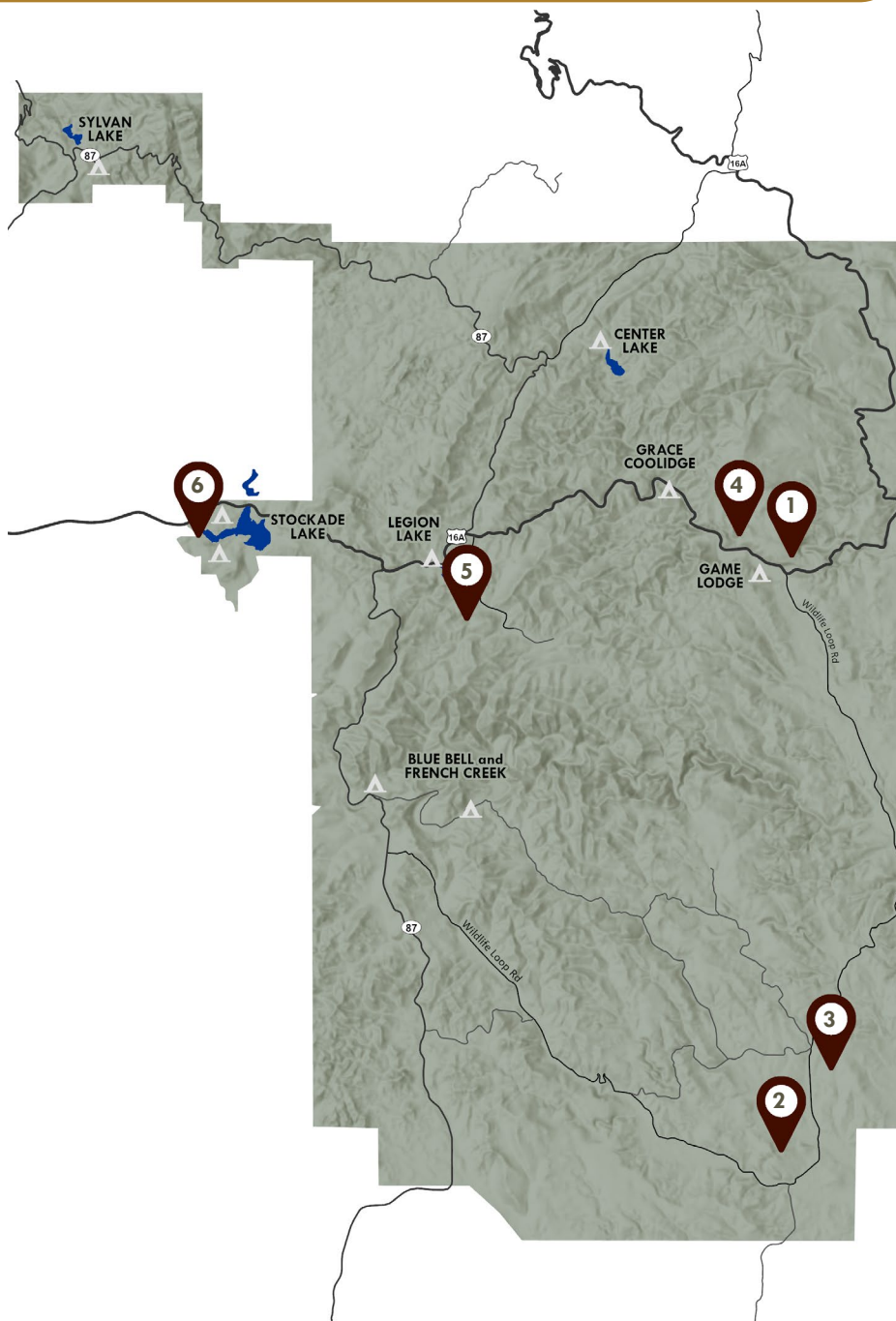
Through the generosity of our donors, we have helped to make great places happen in Custer State Park! The Custer State Park Visitor Center, the Peter Norbeck Education Center, and the Bison Center on Wildlife Loop Road are all places we helped to bring to visitors like you. Join us to support the newest Great Places planned for Custer State Park.

Support the newest projects coming to Custer State Park. Scan now to make your gift!

PARKSWILDLIFEFOUNDATION.ORG



VISITOR CENTERS



CUSTER STATE PARK VISITOR CENTER

Located at the junction of Wildlife Loop Road and Highway 16A.

MAY 1 – LABOR DAY

Open 8 a.m. to 8 p.m.

LABOR DAY – SEPTEMBER 30

Open 8 a.m. to 6 p.m.

OCTOBER 1 – APRIL 30

Open 9 a.m. to 4 p.m.



PETER NORBECK OUTDOOR EDUCATION CENTER

Located on Highway 16 near the State Game Lodge.

The perfect place to play, explore, or take in an educational program.

MEMORIAL DAY – SEPTEMBER 26

Open 9 a.m. to 5 p.m.

SEPTEMBER 27 – MEMORIAL DAY

Closed

CUSTER STATE PARK VISITOR CENTER

The Custer State Park Visitor Center explores an iconic species of the prairie, the bison. Open year round, the visitor center is a great starting point for all of your adventures. Stop in and chat with the knowledgeable staff or take a break in the 100-seat theater and watch the 20-minute movie, "Spirit of Tatanka," narrated by Kevin Costner.



BISON CENTER

Located on Wildlife Loop Road.

The Bison Center tells the story of the park's bison herd.

MAY 16 – LABOR DAY

Open 8 a.m. to 8 p.m.

LABOR DAY - SEPTEMBER 30

Open 8 a.m. to 6 p.m.

OCTOBER 1 – NOVEMBER 7

Open 9 a.m. to 4 p.m.

NOVEMBER 8 – MEMORIAL DAY

Subject to seasonal closure. Call 605.394.2693 for exact times.



WILDLIFE STATION VISITOR CENTER

Located on Wildlife Loop Road.

Take a step back in time and learn about the prairie grasslands of Custer State Park and how staff, who once lived in this building, strive to keep it healthy.

MAY 16 – LABOR DAY

Open 8 a.m. to 6 p.m.

LABOR DAY – SEPTEMBER 26

Open 9 a.m. to 4 p.m.

SEPTEMBER 27 – MEMORIAL DAY

Closed



BADGER HOLE HISTORIC SITE

Located 1/2 mile south of Highway 16A on Badger Clark Road.

This cabin was home to Badger Clark, South Dakota's first Poet Laureate.

MEMORIAL DAY – LABOR DAY

Open 10 a.m. to 5 p.m.

SEPTEMBER 1 – SEPTEMBER 30

Call 605.394.2693 for exact times

OCTOBER 1 – MEMORIAL DAY

Closed



GORDON STOCKADE

Located near the west entrance of the park on Highway 16A.

The Gordon Stockade is built on the original site of the historic structure and tells the story of this short-lived, illegal occupation in 1874-1875.

OPEN YEAR ROUND

Custer State Park is one of the few places in the world to see an abundance of wildlife in their natural habitat. Visitors may encounter a variety of wildlife throughout the park's 71,000 acres, including along trails, in the campgrounds, and beside the road. Wildlife Loop Road is particularly known for its common sightings of buffalo, pronghorn, and prairie dogs, but keep an eye out for white-tailed and mule deer, elk, bighorn sheep, and a host of birds and smaller wildlife as well. For the best results, travel the loop during the early morning or later in the evening when wildlife are most active.

MANAGING THE WILDLIFE

Within the borders of Custer State Park, staff help manage the wildlife populations through several means.

RESEARCH

Working with several colleges, park staff have conducted a number of research projects on many of the animals found in the park, including monitoring where the bison graze and migrate. This is an ongoing project, and in the summer of 2026, you may still see collars on certain bison. Other past projects include elk movements and grazing patterns, as well as bobcat and mountain lion numbers. Through research projects such as these, the park hopes to better understand how the animals of the

park use the area, so we can fine tune our management practices.

HUNTING

Some animal species in the park are managed through hunting programs. Hunting helps reduce the size of the populations, preventing overcrowding within the park, which ensures adequate habitat for all our animals. Species managed through hunting include bison, elk, deer, pronghorn, mountain lion, and turkey.

AUCTION

Some of the bison and burros are sold at our annual auction. This is another way for the park to reduce the size of the herds and prevent overcrowding within the park.

KEEP YOUR DISTANCE

When viewing wildlife, please remain in your vehicle or stay at least 100 yards from bison, elk, and other animals. Regardless of distance, if any wild animal changes its behavior due to your presence, you are too close. Please back away.

PLEASE DON'T FEED US!

Feeding the park's wildlife is prohibited. Feeding any wild animal can be dangerous to both you and the animal.

PARK SAFELY

Stopping, parking, or standing in the road is dangerous. Large vehicles have limited visibility. Other drivers may be distracted by wildlife and scenery. Stay aware of traffic at all times.

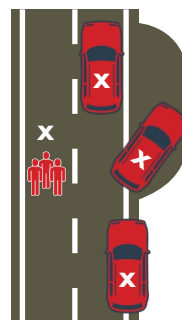
- » Use pullouts to stop.
- » Park with all four tires fully to the right of the white line.
- » When your vehicle is moving, keep doors closed and arms, cameras, and children inside.
- » Do not stop your vehicle in the road or block the road with tripods, chairs, or other objects.
- » If wildlife are nearby, stay inside your vehicle.



**SAFE
PARKING**



**UNSAFE
PARKING**







BISON

The park is home to as many as 1,450 head of North American bison, more commonly known as buffalo. Bison can grow to six feet tall and weigh more than 2,000 pounds. They are considered the largest native terrestrial mammal of North America. Herds are often seen in the southern part of the park. Ask staff at the visitor centers for bison locations



COYOTES

Coyotes hunt in all habitats of Custer State Park and are often seen in prairie dog towns. Their diet is varied, but consists mainly of small mammals. Coyotes may live as solitary individuals, in pairs, or small family groups in both rural and urban areas of the park.



BIGHORN SHEEP

A herd of Rocky Mountain bighorn sheep was reintroduced to Custer State Park in 1922. Rams (males) have thick, curled horns, and ewes (females) have smaller curved horns. Herds are often seen near the French Creek and Grace Coolidge Natural Areas.



MOUNTAIN LIONS

Chiefly nocturnal and reclusive toward humans, mountain lions are found within the Black Hills and Custer State Park. These predators feed on several species, including deer, elk, rabbits, and wild turkeys.



BIRDS

The park's diverse habitat makes for exciting bird watching. Visitors can find the mountain bluebird, white-winged junco, golden eagle, prairie falcon, western tanager, and western meadowlark to name a few.



ELK

Elk are the second largest member of the deer family with only moose larger. Mature bulls grow and shed heavy, wide antlers each year. They are shy and seldom seen during the daytime hours. They are best found in early morning or evening hours.



MOUNTAIN GOATS

The mountain goat was not found in South Dakota until 1923, when it was introduced to the Black Hills. Today, they are found in the granite outcroppings and crags around Black Elk Peak, Needles, and Mount Rushmore areas. The all-white mammal feeds on grasses, ferns, moss, and lichen among other high-elevation plants. Both sexes have sharp, slender, black horns.



PRONGHORNS

Pronghorns, commonly referred to as antelope due to their similar appearance, live on the open grassland. The name pronghorn comes from the buck's large pronged horns. The horn sheaths are shed each year. The fastest land animal in North America, pronghorns can run 60 miles per hour for great distances.



BURROS

The burros in Custer State Park are not native to the Black Hills. They are descendants from the herd that once hauled visitors to the top of Black Elk Peak. The rides were discontinued years ago and the burros were released into the park.



PRAIRIE DOGS

The black-tailed prairie dog is found on the dry, upland prairie. It is a rodent that lives in large social groups called towns. Prairie dogs get their name from their bark-like call.



WHITE-TAILED DEER

White-tailed deer live mainly in the timberlands. As its name implies, the white-tailed deer has white hair on the underside of its tail. When the animal runs, the tail is flipped up and looks like a waving white flag.

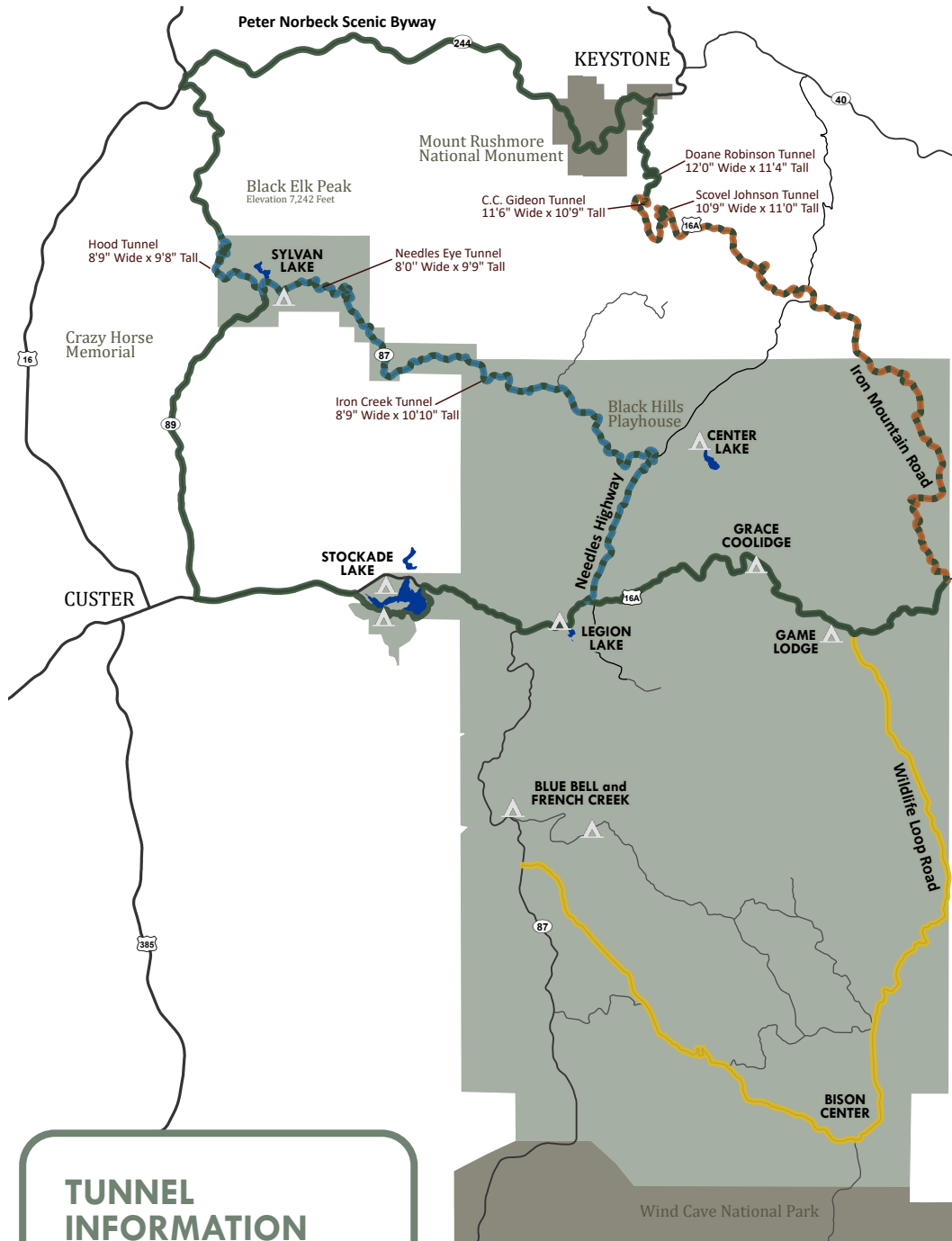


MULE DEER

These deer are aptly named for their large ears. Their black-tipped tails, which are short and narrow, are carried down when the deer runs. Mule deer often bound with a stiff-legged gait as if bouncing on powerful springs when they flee.

SCENIC DRIVES

TAKE YOUR TIME



These winding drives are best enjoyed at a slower pace. When making plans, please allow ample time to travel at a safe speed – generally 25 miles per hour or slower.

“You’re not supposed to drive here at 60 miles an hour. To do the scenery half justice, people should drive 20 or under; to do it full justice, they should get out and walk.”

— PETER NORBECK

- Iron Mountain Rd
- Needles Highway
- Norbeck Scenic Byway
- Wildlife Loop Road

TUNNEL INFORMATION

Tunnels are found on three highways in or near Custer State Park. Drivers of travel trailers, campers, recreational vehicles, and buses should be aware of the tunnel sizes. *Note: The following tunnel measurements are the most current.*

IRON MOUNTAIN ROAD US 16A N

Doane Robinson
12' 0" Wide
11' 4" High

C.C. Gideon
11' 6" Wide
10' 9" High

Scovel Johnson
10' 9" Wide
11' 0" High

SYLVAN LAKE ROAD — SD 87/89, NORTH OF SYLVAN LAKE

Hood Tunnel
8' 9" Wide
9' 8" High

NEEDLES HIGHWAY — SD 87 N

Needles Eye Tunnel
8' 0" Wide
9' 9" High

Iron Creek
8' 9" Wide
10' 10" High

Roads are subject to seasonal temporary closures.



WILDLIFE LOOP ROAD

18 MILES*

EXPECT TRAVEL TIME OF 45 MINUTES.
OPEN YEAR-ROUND

The 18-mile Wildlife Loop Road takes visitors through the open grasslands and pine-speckled hills that much of the park's wildlife call home.

**from the Visitor Center to Blue Bell Entrance Station*



IRON MOUNTAIN ROAD

18 MILES

EXPECT TRAVEL TIME OF 45 TO 60 MINUTES.
SUBJECT TO SEASONAL CLOSURE

This winding road runs between Mount Rushmore National Memorial and the junction of US 16A and SD 36. Constructed in 1933, only a portion of this road lies within the park, but it is a must-see.

Along the highway, visitors will find wildfire exhibits, pigtail bridges, magnificent Black Hills scenery, and tunnels that frame Mount Rushmore.



PETER NORBECK SCENIC BYWAY

EXPECT TRAVEL TIME OF 2-3 HOURS.
SUBJECT TO SEASONAL CLOSURE

The Peter Norbeck Scenic Byway complements the park's three scenic drives and includes some of the most dramatic natural and historic features in the Black Hills.

Sites include the Needles, Mount Rushmore, and a bird's eye view of the rocky peaks and forested hills of the Black Hills National Forest.



NEEDLES HIGHWAY

14 MILES

EXPECT TRAVEL TIME OF 45 TO 60 MINUTES.
CLOSED IN THE WINTER

The Needles Highway is more than a 14-mile road – it's a spectacular drive through pine and spruce forests, meadows surrounded by birch and aspen, and rugged granite mountains. The road's name comes from the needle-like granite formations which seem to pierce the horizon along the highway.

PROGRAMS AND EVENTS

EVENTS CALENDAR

View daily programs and upcoming events.



Custer State Park has a variety of programs available year round. The park offers programs such as water sports, fishing, hiking, or outdoor skills. Our Junior Naturalist program engages younger visitors in outdoor learning. Programming is free and open to all ages; however, a park entrance license is required.

NATURALIST PROGRAMS

January – April

Monthly Programs

Pick up a schedule at the Custer State Park Visitor Center or visit gfp.sd.gov.

May – September

Daily Programs

Pick up a schedule at any visitor center, also posted in campgrounds and online.

October – December

Monthly Programs

Pick up schedule at the Custer State Park Visitor Center, also posted in open campgrounds and online.

BISON OLYMPICS

All Ages | BISON CENTER OR PETER NORBECK OUTDOOR EDUCATION CENTER

Do you have what it takes to be a bison? Come learn how fast a bison can run, how far they can jump, and how much food and water they need every day...then see how you compare.

BUFFALO CORRAL TOURS

All Ages | BISON CENTER

Tour the buffalo corrals and learn how park staff are able to safely monitor the bison herd's health. Also, find out how the park decides which bison stay and which ones are sold. Meet at the Buffalo Corrals located beside the Bison Center.

JUNIOR NATURALIST PROGRAM

Ages 7-12 | PETER NORBECK OUTDOOR EDUCATION CENTER

This activity is for ages 7 -12 and focuses on the natural and cultural history of Custer State Park. Participants interact with staff in hands-on activities relating to wildlife, habitats, nature observation, aquatic insects, fish adaptations, recycling, and Native American history. This activity is one requirement for the overall Junior Naturalist program. Please inquire at the Peter Norbeck Outdoor Education Center for more details.

Note: We have winter Junior Naturalist activity books too! Pick one up at the Peter Norbeck Outdoor Education Center.

MONDAY NIGHT SPEAKER SERIES

CUSTER STATE PARK VISITOR CENTER

Most Mondays Memorial Day through September

Features speakers from outside the park on a variety of topics from Custer's Expedition to the importance of bats to the poetry of Badger Clark set to music.

THURSDAY EVENING ADVENTURES

All Ages | *Most Thursdays Memorial Day through September*

Whether it is sunset on the prairie, night fishing, a full-moon hike, or an owl prowling, enjoy a more adventurous program on select Thursday nights. Locations and programs are as diverse as the Naturalists who offer them!

JANUARY

January 1

First Day Hikes

FEBRUARY

February 13-15

Valentines Weekend

MARCH

March 21-22

Bluebird Box Workshop and Hike

MAY

May 1

Summer Trail Challenge Begins

May 15-17

Open House Weekend

JUNE

June 6

National Trails Day Event

AUGUST

August 4

Star Party

SEPTEMBER

September 24-26

33rd Annual Governor's Roundup Arts Festival

September 25

61st Annual Governor's Buffalo Roundup

OCTOBER

October 16-17

Halloween Night Hike

NOVEMBER

November 7

61st Annual Fall Classic Bison Auction

November 26

Winter Trail Challenge Begins

DECEMBER

December 1 – January 4

11th Annual Festival of Trees and Caching Through the Snow Events

EVENTS ARE SUBJECT TO WEATHER. MORE INFORMATION CAN BE FOUND AT THE VISITOR CENTERS OR AT CUSTERSTATEPARK.COM.

STURGIS MOTORCYCLE RALLY

AUGUST 7-16, 2026

Every August, thousands of motorcyclists visit the Black Hills during the annual Sturgis Motorcycle Rally. Below are upcoming rally dates, so you can either join 'em or avoid 'em.

AUGUST 6-15, 2027 | AUGUST 4-13, 2028

BUFFALO ROUNDUP



The morning is chilly—not freezing, but definitely cold. The prairie isn’t quiet, nor is it loud... it hums with the murmurs of excited guests, the quiet roll of vehicles as they find parking, birds squawking their displeasure at the growing crowd, coyotes sometimes adding their voices, and burros often taking one look before turning tail. They know today is not their day. It’s Buffalo Roundup Day.

Bison have long been a part of the Custer State Park story, and the Roundup has become a major chapter. It is part of the park’s management plan to maintain a healthy balance between the number of bison and the available rangeland forage. The park can only sustain so many buffalo, depending on the condition of the grasslands and the amount of food available for all animals in the park. The Roundup allows the park to sort the herd and auction off animals in November. Buyers come from many states to purchase a Custer State Park bison.

The Roundup itself wasn’t always the

large event it is today. In the early days, it was neighboring rangers who lent a hand. Families brought food, and it was a relaxed, low-key gathering. But it has grown since then. It is now one of South Dakota’s largest events with an average of 20,000 guests showing up each year to watch the herd come thundering in. For some, it’s like stepping back in time. For others, it’s the excitement of joining thousands on the prairie. And for many, attending the Roundup has become a family tradition. Whatever the reason, they come for the bison.

The Roundup involves about 1,400 buffalo. The park aims to gather most of the herd, except for the large bulls. (Those massive animals are a bit too rough for the sorting equipment, so the herd manager is okay just letting them be.) Around 60 horseback riders—made up of park staff, selected riders from an open application process, and invited guests—do most of the work driving the animals across the hills to the corrals. You’ll also see a

number of trucks in the mix. Though they tend to hang back, their job is to protect and support the riders. Some carry media personnel, giving them an up-close view for their stories.

The Roundup is never exactly the same. Sometimes it’s a fast scramble as the herd breaks rank and makes the riders work. On hot years, it’s a slow, steady trot across the hills to avoid overheating the bison or the horses. Some years, it snows—and the crowds and animals alike bundle up and make the most of it. Most years, it’s a combination of all the above.

What never changes is the excitement—from seasoned viewers to first-timers. Even park staff feel it on Roundup Day. There’s a reason the event grows each year, and the 61st will be no different. It’s a time-honored tradition that not only offers a one-of-a-kind experience, but also plays a vital role in protecting these amazing animals in a beautiful place called Custer State Park.

ROUNDUP DAY: WHAT TO EXPECT

FRIDAY, SEPTEMBER 25, 2026

WHEN TO ARRIVE

Barricades are removed and prairie parking opens at 6:15 a.m. The Roundup typically begins around 9:30 a.m., depending on the cooperation of the herd. If lining up early, know that there are no restrooms or food services available until 6:15 a.m. Wildlife is present in the area, so be aware of your surroundings.

VIEWING AREAS

Decide in advance whether you’ll go to the north or south viewing area—there’s no switching once you’re in line. Both offer great vantage points.

THE HERD

Around 1,400 bison will be rounded up. The larger bulls are not included due to their size and temperament and may be seen elsewhere in the park during the event.

ADMISSION

Free on Roundup Day. No park entrance license is required on Friday, September 25. If visiting before or after, the regular \$25 park entrance fee applies and is valid for seven consecutive days.

ATTENDANCE

Expect a crowd—20,000 to 24,000 people typically attend the Roundup.

FOOD AND DRINK

A pancake and sausage breakfast with beverages is available at 6:15 a.m. in both viewing areas. Bison BBQ lunch is served in the corral area until 1 p.m. or until it runs out. Visitors may also bring their own food and drink.

ARTS FESTIVAL

The Buffalo Roundup Arts Festival runs Thursday through Saturday (September 24–26) at the Game Lodge Area and features regional artists, crafters, and food vendors.

HIKING TRAILS



CUSTER STATE PARK TRAIL CHALLENGE



The trail challenge began as a way to invite visitors to hike the trails of the park and experience a variety of landscapes. There are now two challenges, one in the summer and one in the winter. Scan to learn more.

BADGER CLARK TRAIL

Less than 1 mile loop (1.6 km) | Moderate
Trailhead location: Park at Badger Hole parking lot, trail starts right of the cabin. *Located behind the historic Badger Hole, this trail winds through a mixed pine and hardwood forest and along rocky hillsides.*

BARNES CANYON TRAIL

4.7 miles one way (4.8 km) | Moderate
Trailhead locations: Wildlife Loop Road | Turn on the airport road on the north end of the loop road. A second trailhead is located on the Badger Hole Road.

BISON CENTER TRAILS

Red Dog Trail: 1 mile loop (1.6 km) | Moderate
Trailhead location: Located just east of the Bison Center, these two loops wind through mixed grass prairie.

BLACK ELK PEAK TRAIL #4

3.25 miles one way (5.2 km) | Strenuous More up and downhill than #9
Trailhead location: South of Sylvan Lake on Needles Highway (87), shares Little Devils Tower trailhead.

BLACK ELK PEAK TRAIL #9

3.3 miles one way (4.8 km) | Strenuous
Trailhead location: Park at Sylvan Lake Day Use Area and walk east.

CAIRN TRAIL

0.3 miles one way (1.6 km) | Easy - Moderate.
Trailhead location: South end of the Peter Norbeck Outdoor Education Center parking lot.

CATHEDRAL SPIRES TRAIL

1.5 miles one way (2.4 km) | Moderate to strenuous.
Trailhead location: South of Sylvan Lake on Needles Highway (87) along the north side of the road. Can also be accessed by hiking Black Elk Peak Trail #4. There is a sign indicating the branch for Cathedral Spires.

CENTENNIAL TRAIL

Reference trail specific brochure.

CREEKSIDE TRAIL

3 miles one way (4.8 km) | Easy
Trailhead locations: Can be accessed at multiple points from visitor center to Grace Coolidge Campground.

FRENCH CREEK NATURAL AREA

12 miles one way (19 km) | Moderate to strenuous | No marked path on over 7 miles of the trail, hikers walk around/through brush and cross the creek several times. **Trailhead locations:** East | South of the airport on Wildlife Loop Road. West | East end of French Creek Horse Camp.

GRACE COOLIDGE WALK-IN AREA

3 miles one way (4.8 km) | Moderate
Trailhead locations: South | At Grace Coolidge Walk-in area across Highway 16A from Grace Coolidge Campground. North | Across from shower house at Center Lake. *Trail has up to 15 creek crossings with no bridges, which may be difficult. Hikers may get wet. There is poison ivy along the trail. The lowhead dams provide excellent fishing.*

LEGION LAKESHORE TRAIL

Less than 1 mile loop (1.6 km) | Easy
Trailhead location: At west end of fishing dock parking lot.

LITTLE DEVILS TOWER

1.5 miles one way (2.4 km) | Strenuous
Last half mile is a steep rocky incline with large granite boulders you will need to scramble over.
Trailhead location: Less than one mile south of Sylvan Lake General Store on Needles Highway (87), clearly visible from the road.

LOVERS LEAP TRAIL

4 mile loop (6.4 km) | Moderate to strenuous. Mostly uphill to start with some rocky hills.
Trailhead location: Behind the Mickelson Chapel near the State Game Lodge. *Note: additional parking can be found at the Peter Norbeck Outdoor Education Center.*

LOST TRAILS

3.5 miles (5.6 km) | Moderate to strenuous
Trailhead locations: Two trailheads, one at the south end of the Center Lake beach parking area. The other, at the Center Lake boat dock.

PRAIRIE TRAIL

3 mile loop (4.8 km) | Moderate. One steep hill at halfway point. **Trailhead location:** On Wildlife Loop Road south of prairie dog towns, toilet at trailhead.

STOCKADE LAKE TRAIL

1.5 mile loop (2.4 km) | Moderate. Includes a short rocky incline for the first half. **Trailhead location:** Across from swim beach on Stockade Lake Drive.

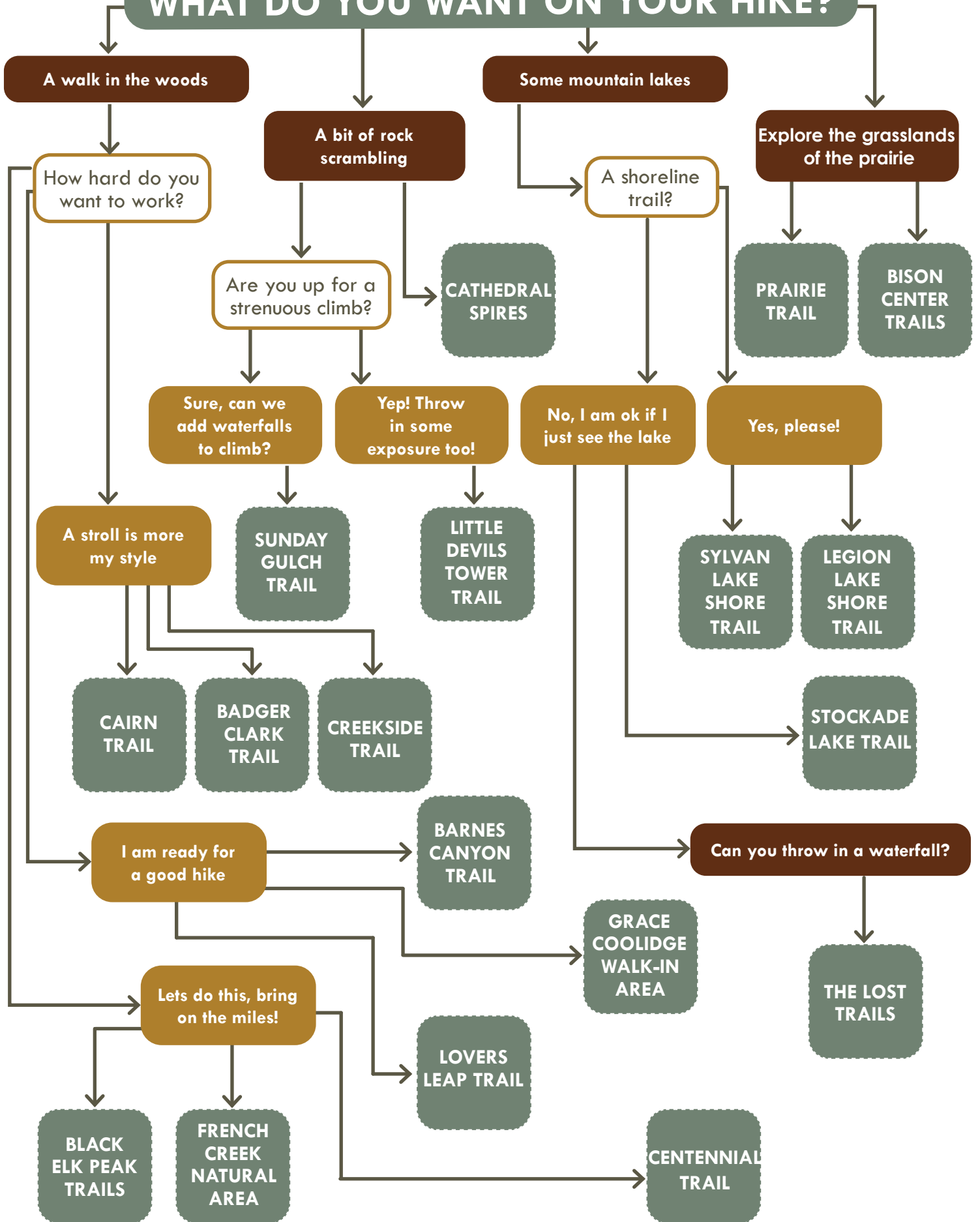
SUNDAY GULCH

3.2 mile loop (4.8 km) | Strenuous. Requires scrambling over wet rocks.
Trailhead location: Follow Sylvan Lakeshore Trail, trailhead is behind the dam.

SYLVAN LAKESHORE TRAIL

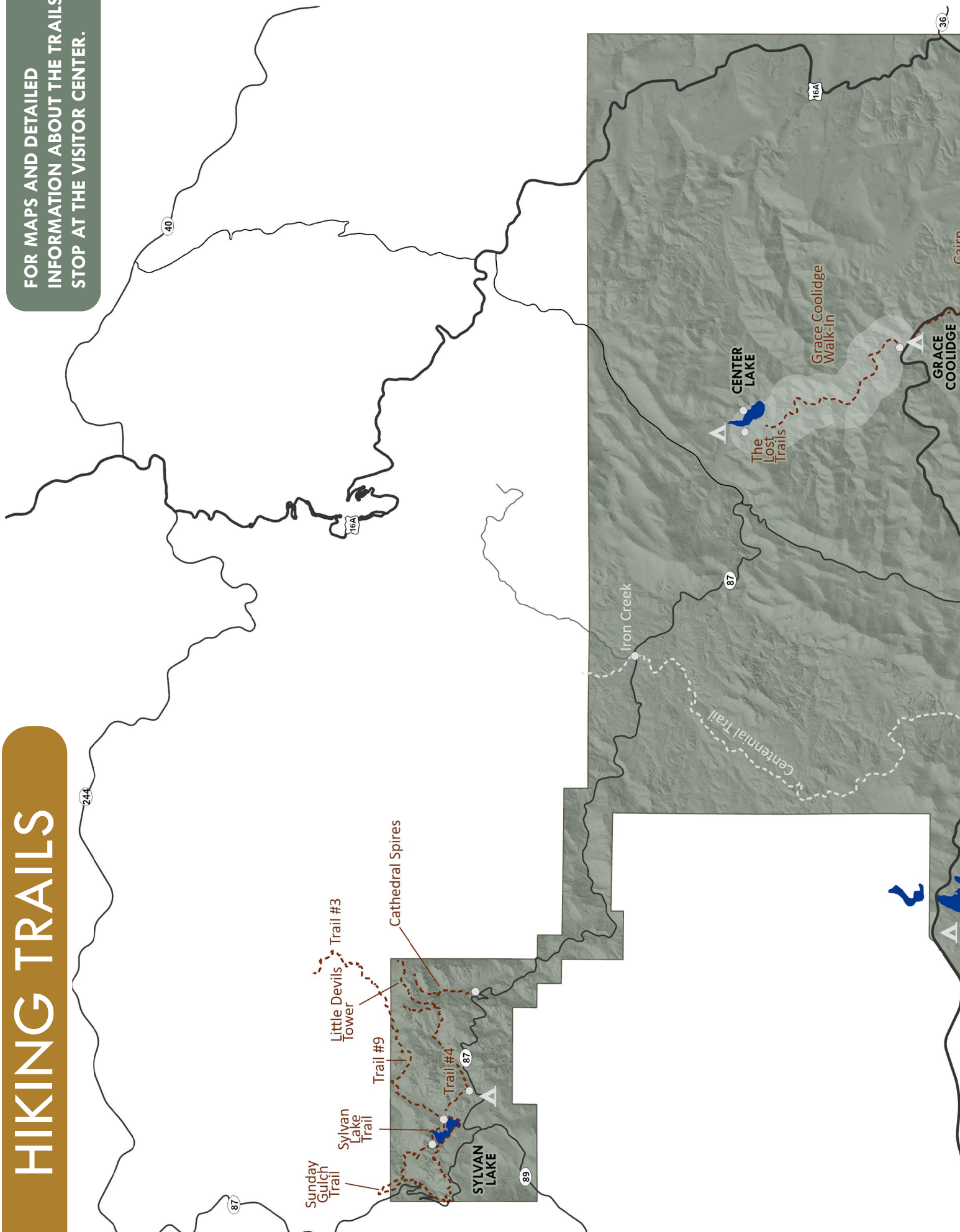
1 mile loop (1.6 km) | Easy to Moderate
Trailhead location: Can be accessed from any portion of Sylvan Lake.

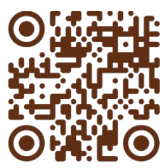
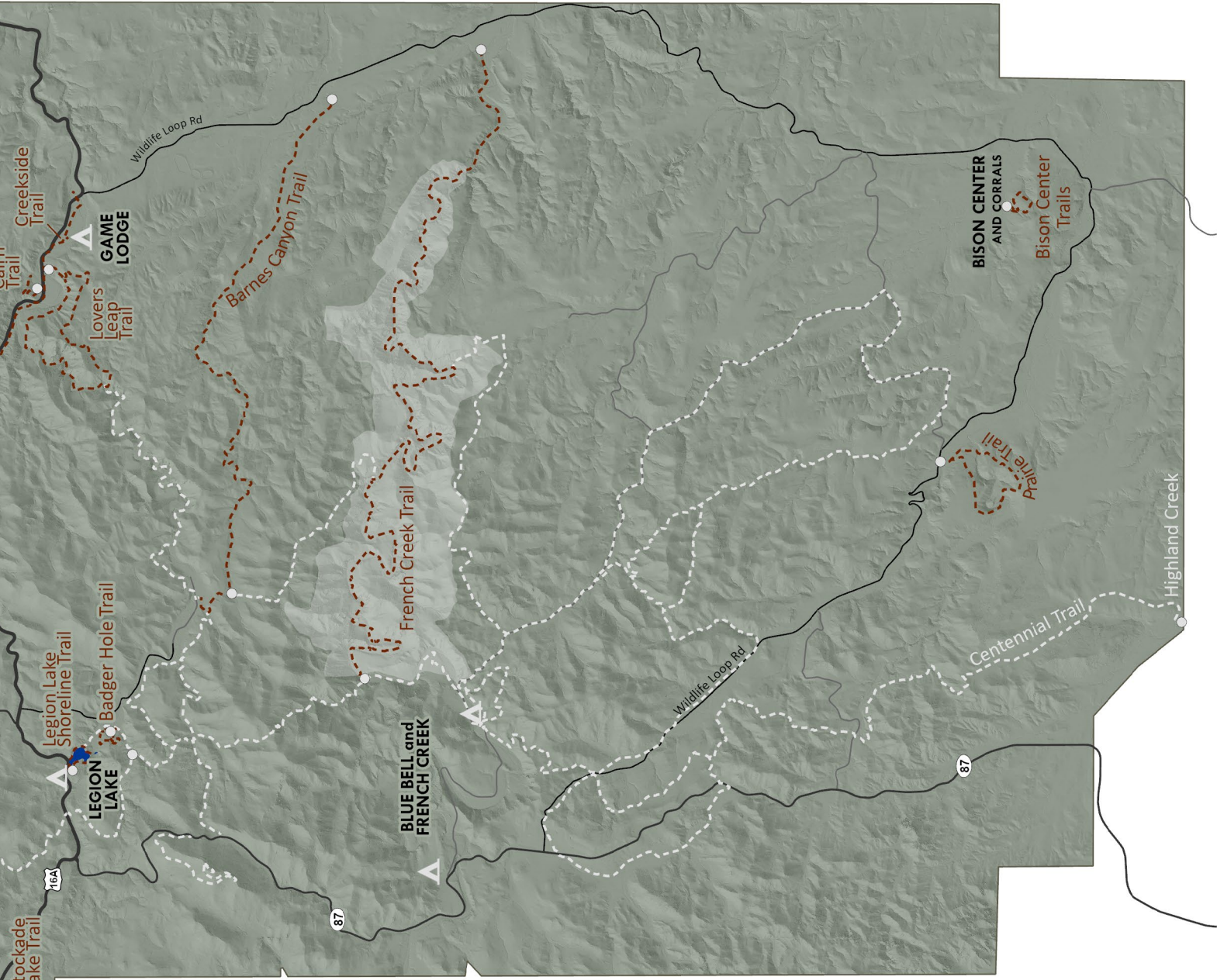
WHAT DO YOU WANT ON YOUR HIKE?



HIKING TRAILS

FOR MAPS AND DETAILED INFORMATION ABOUT THE TRAILS, STOP AT THE VISITOR CENTER.





TRAIL GUIDE

TRAIL RATINGS

EASY | The trail mainly follows level ground with very little elevation change.

MODERATE | Parts of the trail include more inclines, hills, or elevations changes. May have more technical terrain such as rocky or root-covered trail, loose gravel on inclines, or narrow paths.

STRENUOUS | Much of the trail includes very steep slopes and rocky areas. May include a long, steady climb; many steps or stairs; and roots, slippery rocks or other difficult terrain

- Trailhead
- Hiking Trail
- Horse or Multi-Use Trail

OPEN YEAR-ROUND



WINTER ROADS

Some roads may be closed during the winter. Please check SD 511 for the most up-to-date road information.

Beat the winter blues and escape to the park! During the months of January, February, and March, the park offers a variety of programming from ice fishing to winter survival to guest speakers.

Winter is a great time to explore the park; the season brings a quiet serenity to the place, and there are fewer visitors to share it with. During the winter, the park takes guests on a series of guided hikes. If there is enough snow, guests can experience snowshoeing throughout the park, free of charge!

Snowshoes are available for check out from January to March. Stop by the visitor center to get fitted and learn which trails are best suited for snowshoe hiking.

During the month of December, the visitor center takes on a holiday feel with the Festival of Trees. Local businesses and community partners decorate trees which are on display, and visitors can vote for their favorite.

WINTER TRAIL CHALLENGE

Get out and explore Custer State Park with the Winter Trail Challenge. The challenge runs from the Friday after Thanksgiving until April 1, 2026. At one point along each trail, there is a 2026 Winter Trail Challenge Selfie Sign. To complete the Trail Challenge, participants must hike all the listed trails and collect a selfie at each Winter Trail Challenge Sign.

Each year the trails and the challenges change, so make sure to stop at the visitor center and pick up this year's official flyer.



WINTER

- » Park is open, however Needles Highway is closed to motorized vehicles—it's a great opportunity to hike the road!
- » Tends to be quieter
- » Winter Trail Challenge
- » Snowshoe checkout available (January-March)
- » Winter programming including hikes, ice fishing, and snowshoeing



SPRING

- » Wildlife babies
- » Spring bird migrations
- » Trees begin to bud
- » Warm weather begins to arrive
- » Restaurants, lodges, and activities open in May with limited hours
- » Summer Trail Challenge begins May 1
- » Open House Weekend May 15-17



SUMMER

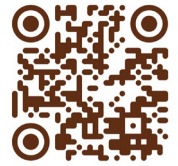
- » All facilities open
- » Daily summer programming
- » All roads open
- » All restaurants, lodges, and activities open with full hours



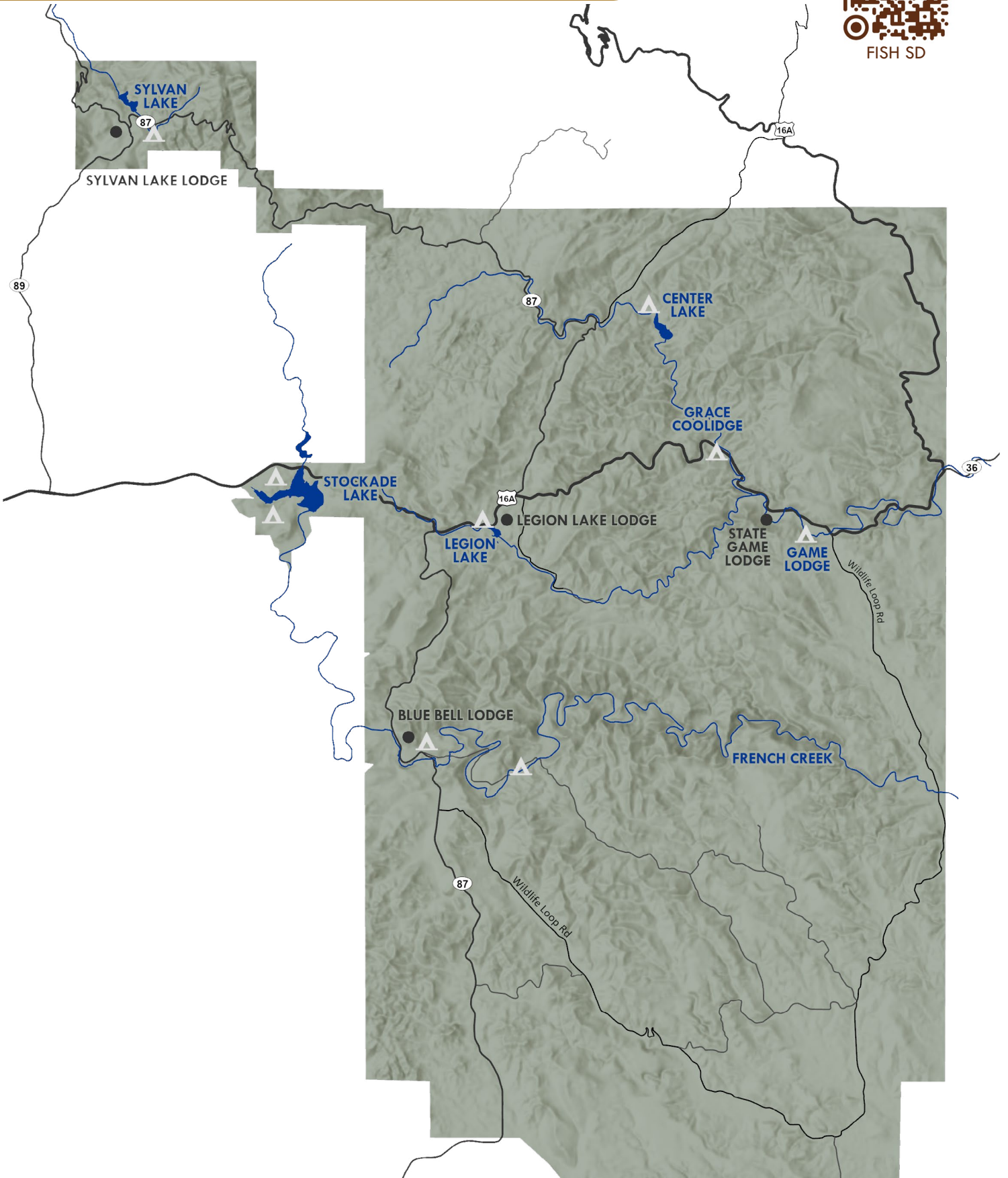
FALL

- » Buffalo Roundup (end of September)
- » Halloween Night Hike
- » Fall colors
- » Restaurants, lodges, and activities close near the end of October

LAKES AND STREAMS



FISH SD





SWIMMING

Swimming is allowed at the park’s four lakes—Center Lake, Legion Lake, Stockade Lake, and Sylvan Lake. There are no lifeguards on duty. Jumping from cliffs and rocks into the water is illegal and strictly prohibited. Pets and glass containers are prohibited from all zoned swimming beaches.



BOATING

For your safety, wear a personal flotation device (PFD), or life jacket, whenever you are on the water. PFDs are mandatory for all people riding on watercraft on South Dakota waters.

Boating is permitted within Custer State Park with the following restrictions:

- » Sylvan Lake, *Electric motors only*
- » Legion Lake, *Electric motors only*
- » Stockade Lake, *All boats allowed*
- » Center Lake, *Only slow, non-wake boating allowed*

Boat ramps are available at Stockade and Center Lakes.



FISHING

Fishing is allowed anywhere in Custer State Park. A valid South Dakota fishing license is required and can be purchased online at gfp.sd.gov.

Anglers will find rainbow, brown, and brook trout in the park’s waters. Only one trout from a Black Hills stream can exceed 14 inches, but there is no minimum size restriction. Daily limit is 5.

It is legal to use artificial lures, flies, worms, or other bait. A variety of sport and panfish are found in Stockade Lake including northern pike, bass, perch, crappie, bluegill, and bullhead.

Licenses, bait, and tackle are available at each of the four resort areas. For daily limits and rules, please refer to the 2026 Fishing Handbook, available at the visitor centers and the park office. The handbook is also available online at gfp.sd.gov and on our mobile app, Go Outdoors South Dakota.

Habitat Stamp

A habitat stamp is required for anyone 18 years of age or older when purchasing a fishing license. The annual fee for the habitat stamp is \$10 for South Dakota residents and \$25 for nonresidents. A habitat stamp is not required for the one-day fishing license.

Habitat stamp dollars associated with fishing license sales fund aquatic habitat projects on public waters across South Dakota.

FISHING LICENSE FEES

LICENSE	RESIDENT	NON-RESIDENT
ONE-DAY	\$10	\$26
THREE-DAY	N/A	\$45
ANNUAL	\$31	\$80

CAMPING



**CAMPING
RESERVATIONS**
CAMPSD.COM
1.800.710.2267



CAMPING RESERVATIONS

Reservations required

Campsites and group areas can be reserved one year in advance.

Camping cabin reservations can be made a year in advance, but must be made at least two days prior to your arrival.

Fees

Camping fees vary per campground. A non-refundable, \$10 fee is assessed to nonresidents making online reservations. This fee does not apply to South Dakota residents.

A fee is assessed to all phone reservations—\$6 for South Dakota residents, \$16 for nonresidents.

Camping fees for the entire stay must be paid at the time the reservation is made.

A park entrance license is not included in camping reservation fees and must be purchased separately.

Cancellations

Cancellations can be made by calling 1.800.710.2267.

Cancellation fees are charged if:

- » Cancelling a campsite within 7 days of the reservation. Cancellation fee is one-half of one night of the camping fee.
- » Cancelling a camping cabin within 30 days of the reservation. Cancellation fee is one-half of one night of the rental fee.
- » Cancelling a campsite at French Creek Horse Camp in Custer State Park within 30 days of the reservation. Cancellation fee is one-half of one night of the camping fee.

- » The reservation fee that is assessed to all phone reservations and out-of-state residents is non-refundable.

SAME DAY RESERVATIONS

Center Lake Campground

- » All open sites can be reserved beginning at 6 a.m. MT on the day of arrival.

NON-PROFIT YOUTH CAMPING AREAS

The park offers two primitive areas (Shady Rest and Center Lake) for non-profit youth tent camping only. Call 1.800.710.2267 for reservations. Reservations are not available online.



CAMPSITES

Camping is permitted only in designated areas. One camping unit permitted per site. A camping unit is any one hard-sided camper and/or one or more tents, if all occupants meet the definition of family (parents or grandparents and their minor children) or do not exceed six people. **Check-in and checkout time is noon Mountain Time.**



CAMPING CABINS

Locations: Blue Bell, Game Lodge, Stockade South, French Creek Horse Camp

About cabins: Sleep four or five people; linens are not included; check-in time is 4 p.m.; checkout time is 11 a.m.; no smoking or cooking in the cabins.

Amenities: Heating and air conditioning, electricity, picnic table, fire ring, porch, bunk bed and double bed, table, benches.



PRIMITIVE CAMPING

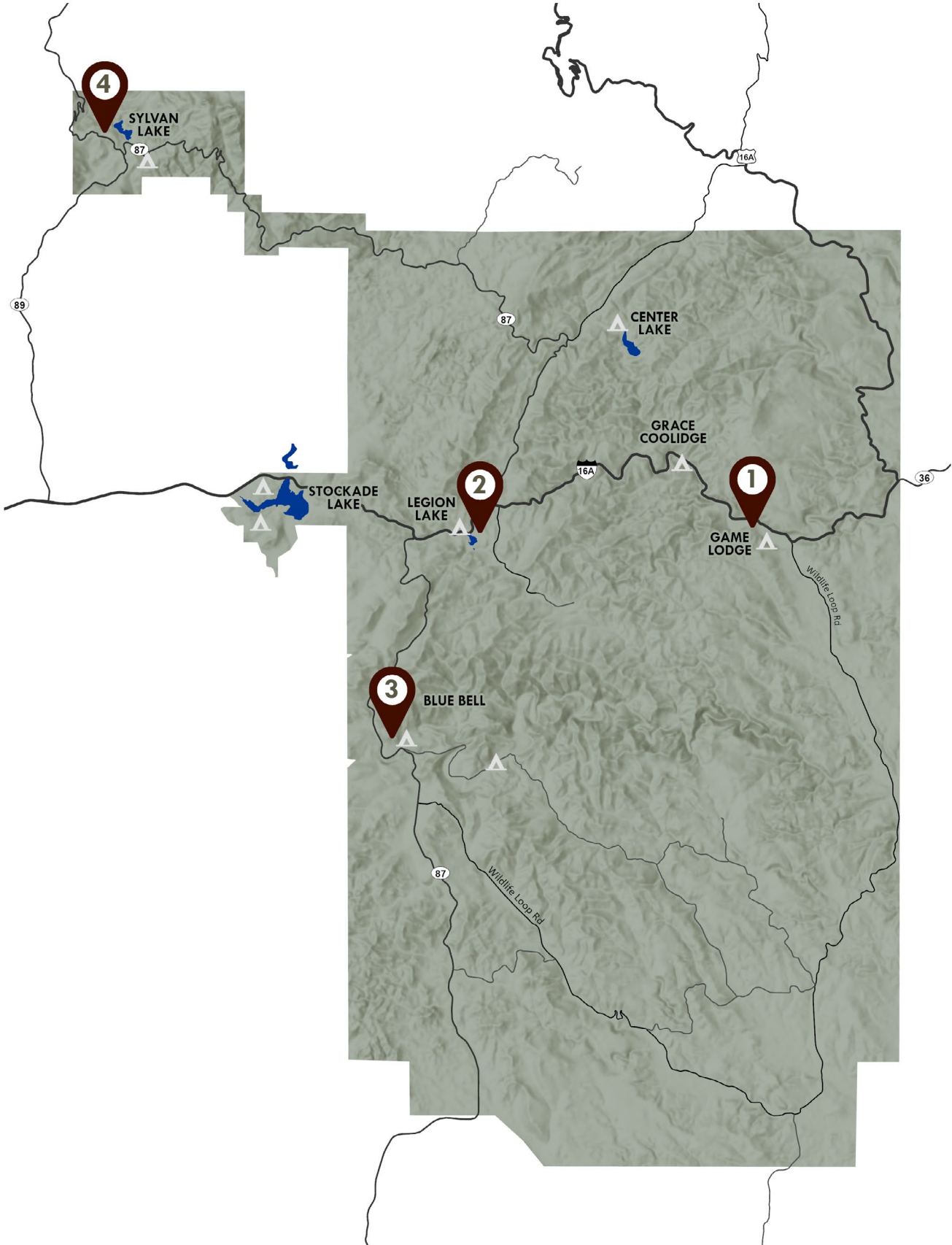
For a primitive outdoor experience, backpackers should try the French Creek Natural Area. Hikers using this area can camp anywhere along the canyon bottom. Open fires are prohibited. Campers must self-register at the stations located on each end of the natural area. The fee is \$8 per person, per night.

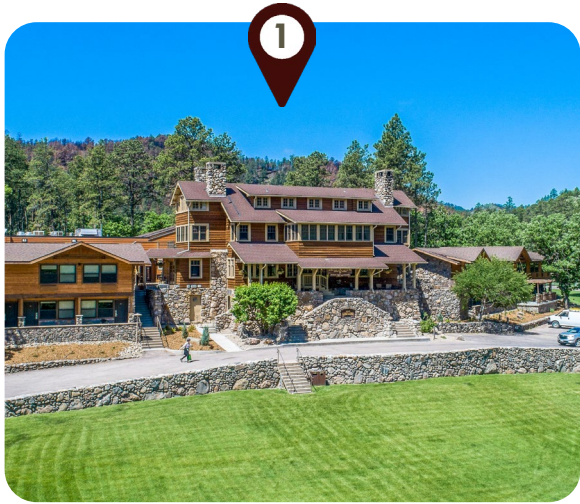


GROUP CAMPING

Group campgrounds are located near Stockade Lake and the Game Lodge Campground. These areas feature picnic shelters, vault toilets, fire grates, picnic tables, and water on site. Showers and flush toilets are available within walking distance from the campgrounds. Designated swim beaches can also be found close by. Call 1.800.710.2267 for reservations. Reservations are not available online.

CUSTER STATE PARK RESORTS





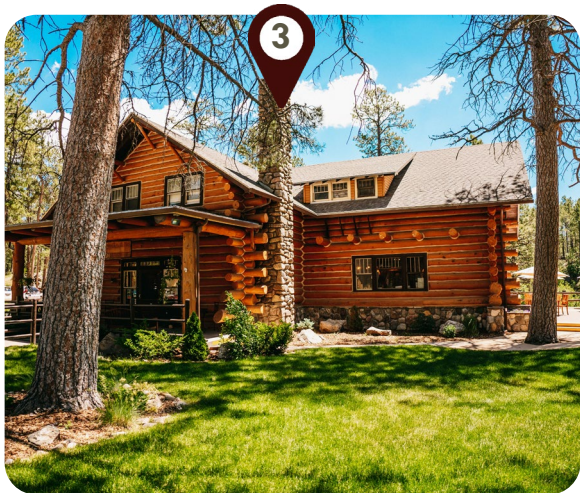
STATE GAME LODGE

Picture yourself in a gentle mountain valley, surrounded by stately ponderosa pines and oak, birch, and aspen trees of changing hues. The native stone and wood State Game Lodge was built in 1920 and is listed on the National Register of Historic Places. It served as the “Summer White House” for President Calvin Coolidge in 1927 and was visited by President Dwight D. Eisenhower in 1953.



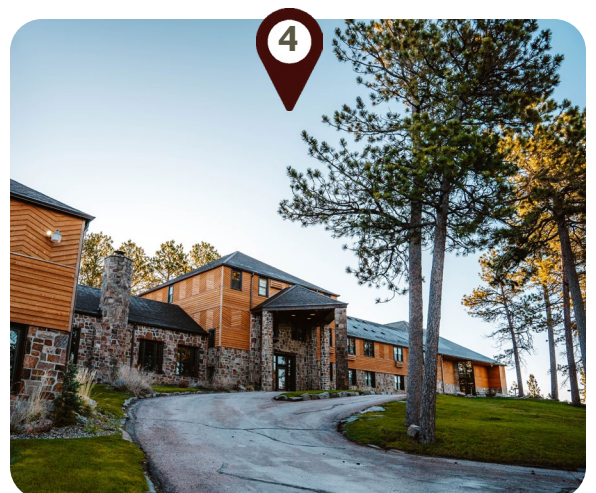
LEGION LAKE LODGE

Named for the American Legion Post that once leased the land, Legion Lake is a quiet, lakeside retreat. It's perfect for lakeside patio dining, summer picnics, and lazy days at the beach. You can fish, boat, and swim at Legion Lake, or rent a variety of watercraft vehicles. You can also pick up fishing licenses, park passes, and supplies at the Legion Lake General Store.



BLUE BELL LODGE

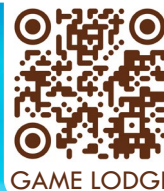
Live like the cowboys of old. Head on over to the prettiest little log-cabin ranch hideaway. Saddle up for a trail ride through the park's hidden spots. Gather around for our evening chuckwagon cookouts, a Blue Bell tradition with live entertainment!



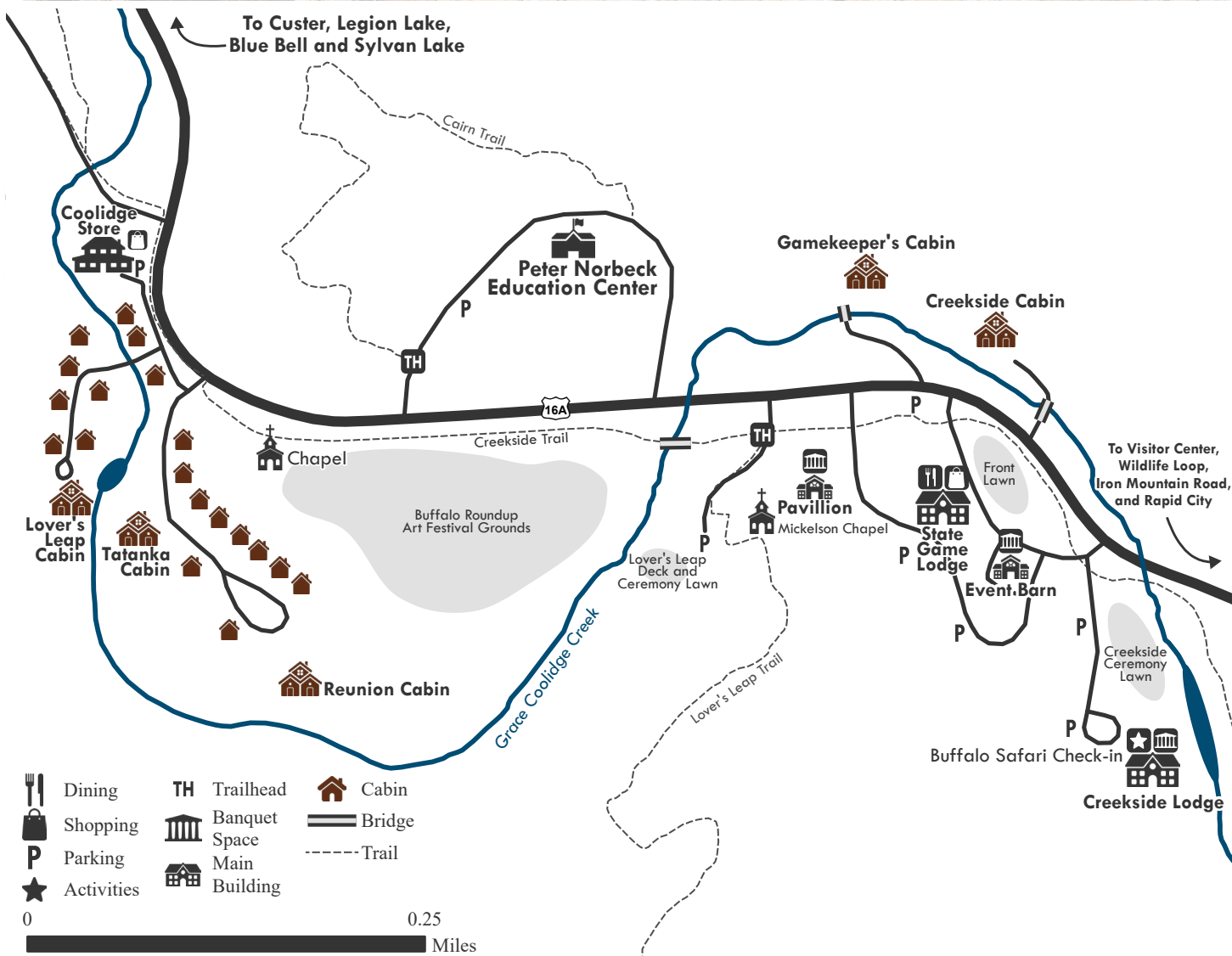
SYLVAN LAKE LODGE

At the top of Needles Highway sits Sylvan Lake Lodge—Custer State Park's crown jewel. Rich in history and natural beauty, the lodge is situated in a spot suggested by architect Frank Lloyd Wright—within a hillside forest of pine and spruce trees, in harmony with the beauty of the rugged landscape. This stone and timber lodge sits atop the sloping hills and the breathtaking beauty of Sylvan Lake.

STATE GAME LODGE



GAME LODGE





LODGING AND SHOPPING

888.875.0001

As the largest resort in the park, the State Game Lodge features both hotel rooms and cabins. Choose from newly restored historic lodge rooms in the main lodge, a wing of hotel rooms attached to the main lodge, modern hotel rooms at Creekside Lodge, and single-family cabins in the valley. We also feature a number of group specialty cabins like our Reunion Cabin and Tatanka Cabin. Don't miss the gift shop and the historic Coolidge General Store.



DINING ROOM

605.255.4541

Be part of the grand ambiance that harkens back to the state dinners of the 1927 Summer White House. Enjoy the view from the historic front porch.

Open daily all season long for breakfast, lunch, and dinner. Dinner reservations recommended but not required.



BUFFALO SAFARI TOUR

605.255.4541

Named "Top 10 Safaris in the US" by MSN. Daily departures from Creekside Lodge. Take an unforgettable safari in a custom-stretch Jeep through the park in search of free-roaming wildlife like pronghorns, elk, and the noble buffalo.

Duration: 1.5 – 2 hours



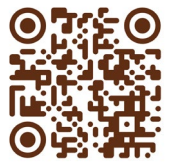
BUFFALO SAFARI TOUR WITH CHUCKWAGON COOKOUT

605.255.4541

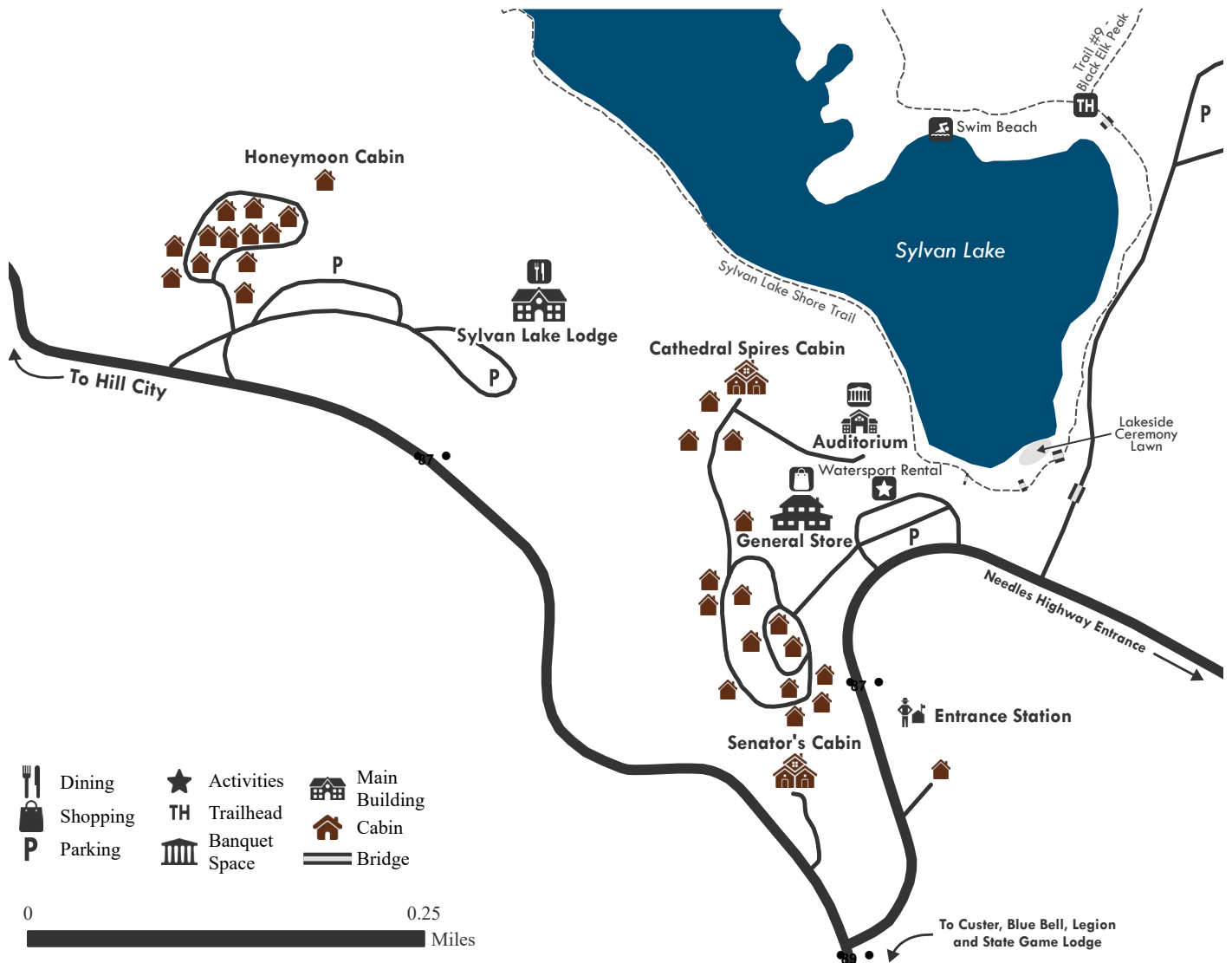
Combination tour, 1.5 hour Jeep tour followed by Blue Bell Lodge's Chuckwagon Cookout. Evening departures from Creekside Lodge. Dinner and live entertainment included. *(More on page 35)*

Duration: 3.5 - 4 hours

SYLVAN LAKE LODGE



SYLVAN LAKE LODGE





LODGING

888.875.0001

Rich in history and natural beauty, the stone and timber lodge is situated in a spot suggested by architect Frank Lloyd Wright—atop the sloping hills and the breathtaking beauty of Sylvan Lake. Featuring single-family cabins, honeymoon cabin, and the group Cathedral Spires Cabin within walking distance to the lake.



RESTAURANT, VERANDA AND GREAT ROOM LOUNGE

605.574.2561

Fresh, locally-sourced ingredients grace the dinner table at Sylvan Lake Lodge. Double-peaked wooden ceiling, hardwood floors, and stone fireplace. Make reservations on the stone veranda for al fresco dining with fabulous vistas of the Black Hills.

Open daily for breakfast, lunch, and dinner. Reservations recommended.



SHOPPING

605.574.2561

Quick, casual comfort food enjoyed lakeside, ice cream, coffee, and general store and gift shop.



WATERCRAFT RENTALS

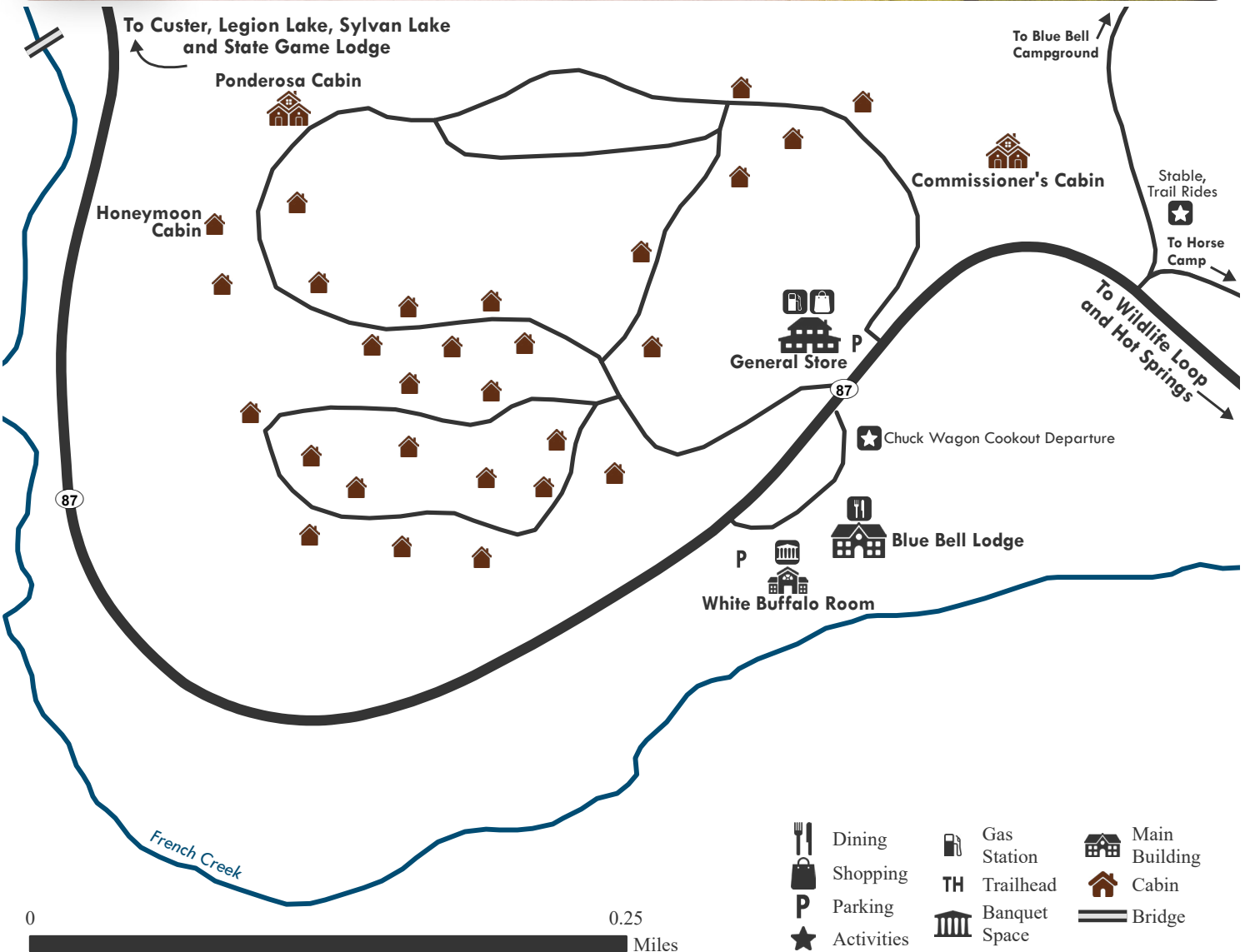
605.574.2561

Canoe, kayak, and paddleboard rentals available from the store, first-come, first-served. Life jackets provided with rental.

BLUE BELL LODGE



**CUSTER
STATE PARK
RESORT**





CABINS AND SHOPPING

888.875.0001

Head on over to the prettiest little log cabin hideaway. With only 30 cabins in total, Blue Bell's are some of the most peaceful and sought-after cabins in the park, featuring the group Ponderosa Cabin that sleeps up to 24. The general store and gift shop offer gas and firewood.



SCENIC TRAIL RIDES

605.255.4700

The most peaceful, scenic ways to experience the park's trails. All levels welcome! One-hour (most popular), Two-hour, Half or Full Day. Lil Buckaroo Rides also available!



SALOON-STYLE RESTAURANT, LOUNGE, AND PATIO

605.255.4531

Enjoy saddle stools at the bar! Specialty burgers, South Dakota dip, salads, and buffalo. Open daily all season long for breakfast, lunch, and dinner.



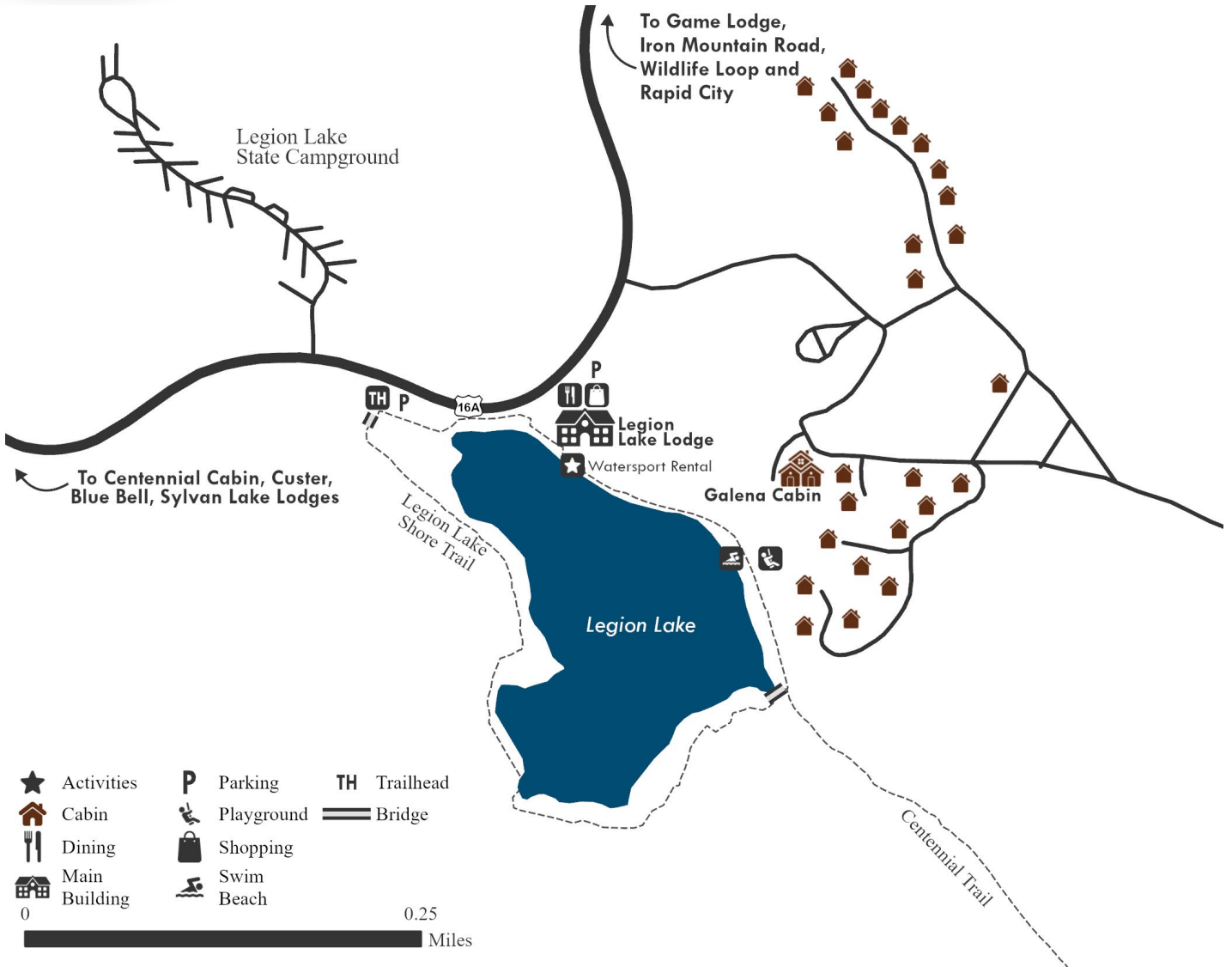
HAYRIDE AND CHUCKWAGON COOKOUT

605.255.4531

Top rated! Evening scenic wildlife hayride tour with live entertainment and a steak dinner!

Duration: 3 hours, return back around dusk

LEGION LAKE LODGE





CABINS

888.875.0001

Come to the water's edge. Single-family resort cabins within easy walking distance to the lake, Legion Lake Lodge, and watercraft rentals.



SHOPPING AND COFFEE

605.255.4521

Gift shop features limited general store products. Stop in for picnic drinks, snacks, gifts, toys, apparel, home goods, milkshakes, and specialty coffee.



DOCKSIDE GRILL

605.255.4521

Delight in a day at the water's edge. Small plates, salads, sandwiches, and all-day favorites. Tap beer and specialty coffee.

Open daily all season long for breakfast, lunch, and dinner.



WATERCRAFT RENTALS

605.255.4521

Canoe, kayak, and paddleboard rentals available from the store, first-come, first-served. Life jackets provided with rental.

BLACK HILLS PLAYHOUSE

Eighty-year-old, regional professional theatre located at 24834 S Playhouse Road in Custer State Park near Center Lake Campground. Park entrance license is required.

PERFORMANCE TIMES

WEDNESDAY - SATURDAY

7:30 P.M.

TUESDAY, WEDNESDAY, SUNDAY

2 P.M. MATINEE

Air conditioned. Picnic shelter. Concessions. Gifts. Visitors advised to arrive 1/2 hour before curtain, reservations recommended.

TICKETS

605.255.4141

theatre605.org/black-hills-playhouse



PHOTO © SAGESTUDIOS



SCAN FOR
TICKET PRICES,
SHOW TIMES,
AND DESCRIPTIONS

250 YEARS AND COUNTING

COMEDIC WHIRLWIND TOUR OF AMERICAN HISTORY

THE COMPLETE HISTORY OF AMERICA (ABRIDGED)

JUNE 7 - 21

BY ADAM LONG, REED MARTIN, AUSTIN TICHENOR

COMEDY | TEENS/ADULTS

FICTIONAL MUSICAL ACCOUNT OF THE SIGNING OF THE DECLARATION OF INDEPENDENCE

1776

JUNE 28 - JULY 12

BOOK BY PETER STONE
MUSIC AND LYRICS BY SHERMAN EDWARDS

MUSICAL | AGES 9+

HIT MUSICAL BASED ON A REMARKABLE TRUE STORY

COME FROM AWAY

JULY 19 - AUG 2

BOOK, MUSIC AND LYRICS BY IRENE SANKOFF AND DAVID HEIN

MUSICAL | AGES 10+

FOUR GENERATIONS OF WOMEN AND THE CONSTITUTION

WHAT THE CONSTITUTION MEANS TO ME

AUG 9 - 15

BY HEIDI SCHRECK

COMEDY | AGES 14+

THEATRE 605 2026
BLACK HILLS PLAYHOUSE

BOGO FIRST TIME ATTENDING

Present this coupon for Buy One Show Ticket, Get One Free discount. Contact info is required. No online sales. Discount offers may not be combined.

THEATRE 605 2026
BLACK HILLS PLAYHOUSE

\$3 OFF THEATRE PERFORMANCE

Present this coupon for discount or use online with code CSP26. Discount offers may not be combined.

AREA STATE PARKS

Your Custer State Park entrance license is valid at all South Dakota State Parks including Angostura and Sheps Canyon Recreation Areas near Hot Springs, Bear Butte State Park near Sturgis, and Rocky Point Recreation Area near Belle Fourche. An additional trail pass is required for the George S. Mickelson Trail. There is no fee for Spearfish Canyon Nature Area.



SPEARFISH CANYON

1 ANGOSTURA RECREATION AREA

Located 10 miles southeast of Hot Springs, off US 18/385
605.773.2866

Angostura Reservoir is a water-lover's haven in the southern Black Hills. With plenty of room for boating, fishing, swimming, and camping, this recreation area attracts visitors to its clear waters and natural sand beaches.

2 BEAR BUTTE STATE PARK

Located 6 miles northeast of Sturgis off SD 79
605.347.5240

Mato Paha or "Bear Mountain" is the Lakota name given to this site. The mountain is sacred to many American Indian tribes. A rugged two-mile hike to the summit rewards visitors with a view of four states.

3 GEORGE S. MICKELSON TRAIL

Runs 109 miles from Edgemont to Deadwood
605.584.3896 | **Additional pass required**

The George S. Mickelson Trail runs through the heart of the Black Hills. The trail's gentle slopes and easy access enables people of all ages and abilities to enjoy the scenery.

4 ROCKY POINT RECREATION AREA

Located 8 miles east of Belle Fourche off SD 212
605.773.2408

A popular fishing and boating park, Rocky Point Recreation Area is located on the 8,000-acre Belle Fourche Reservoir.

5 SHEPS CANYON RECREATION AREA

Located 6 miles south of Hot Springs on SD 71, 5 miles east on Sheps Canyon Road | 605.773.2866

Nestled along Sheps Canyon Bay, Sheps Canyon Campground is on the west shore of Angostura Reservoir. It offers great access to the boat ramp and excellent shore fishing opportunities.

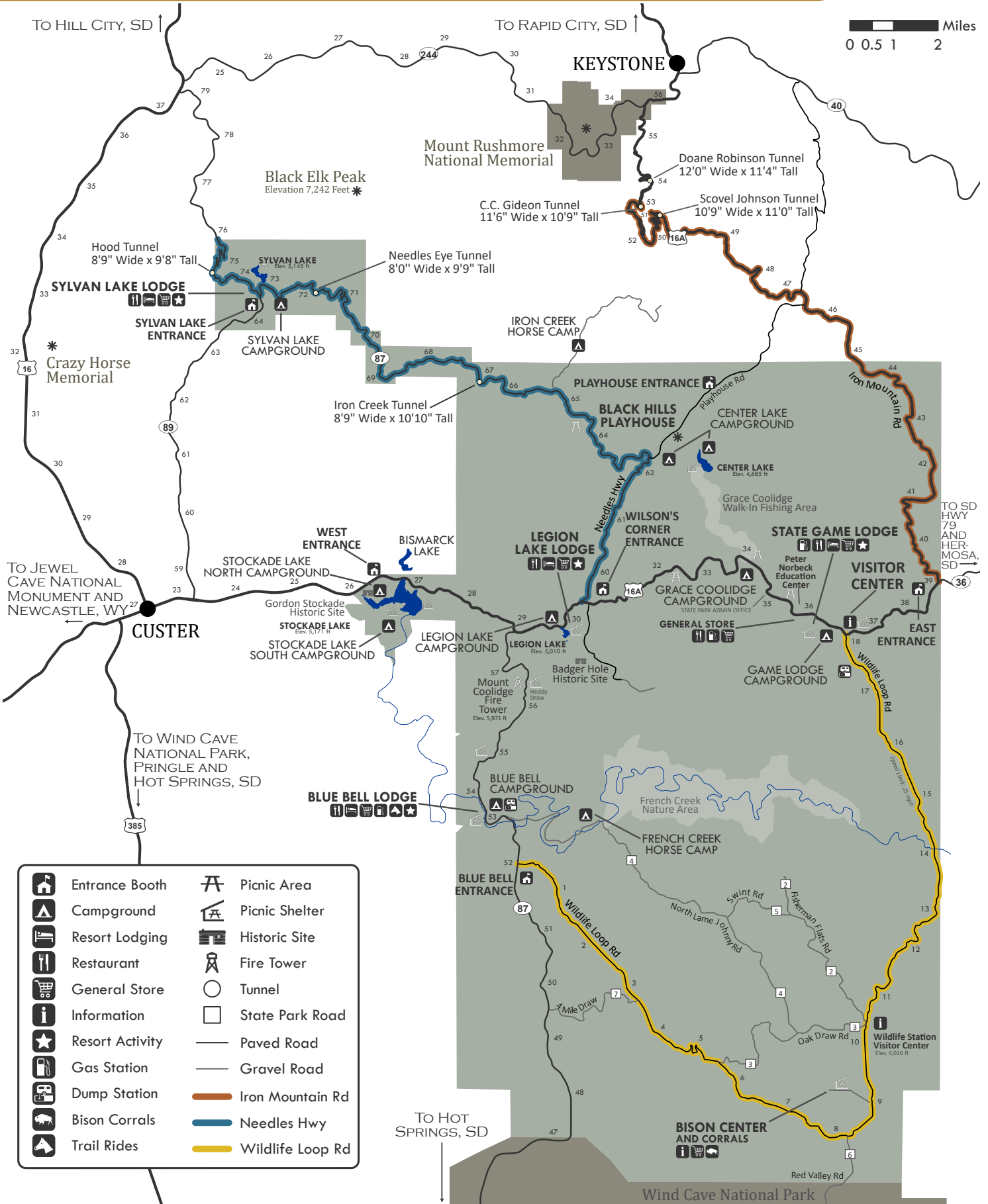
6 SPEARFISH CANYON NATURE AREA

Located 1 mile west from the Scenic Byway at Savoy on FDR 222 in Spearfish Canyon | 605.584.3896

Spearfish Canyon Nature Area is considered one of the most beautiful locations in the Black Hills. The water feeding Roughlock Falls flows into Spearfish Canyon from Little Spearfish Creek.



CUSTER STATE PARK



- | | | | |
|--|-----------------|--|------------------|
| | Entrance Booth | | Picnic Area |
| | Campground | | Picnic Shelter |
| | Resort Lodging | | Historic Site |
| | Restaurant | | Fire Tower |
| | General Store | | Tunnel |
| | Information | | State Park Road |
| | Resort Activity | | Paved Road |
| | Gas Station | | Gravel Road |
| | Dump Station | | Iron Mountain Rd |
| | Bison Corrals | | Needles Hwy |
| | Trail Rides | | Wildlife Loop Rd |