

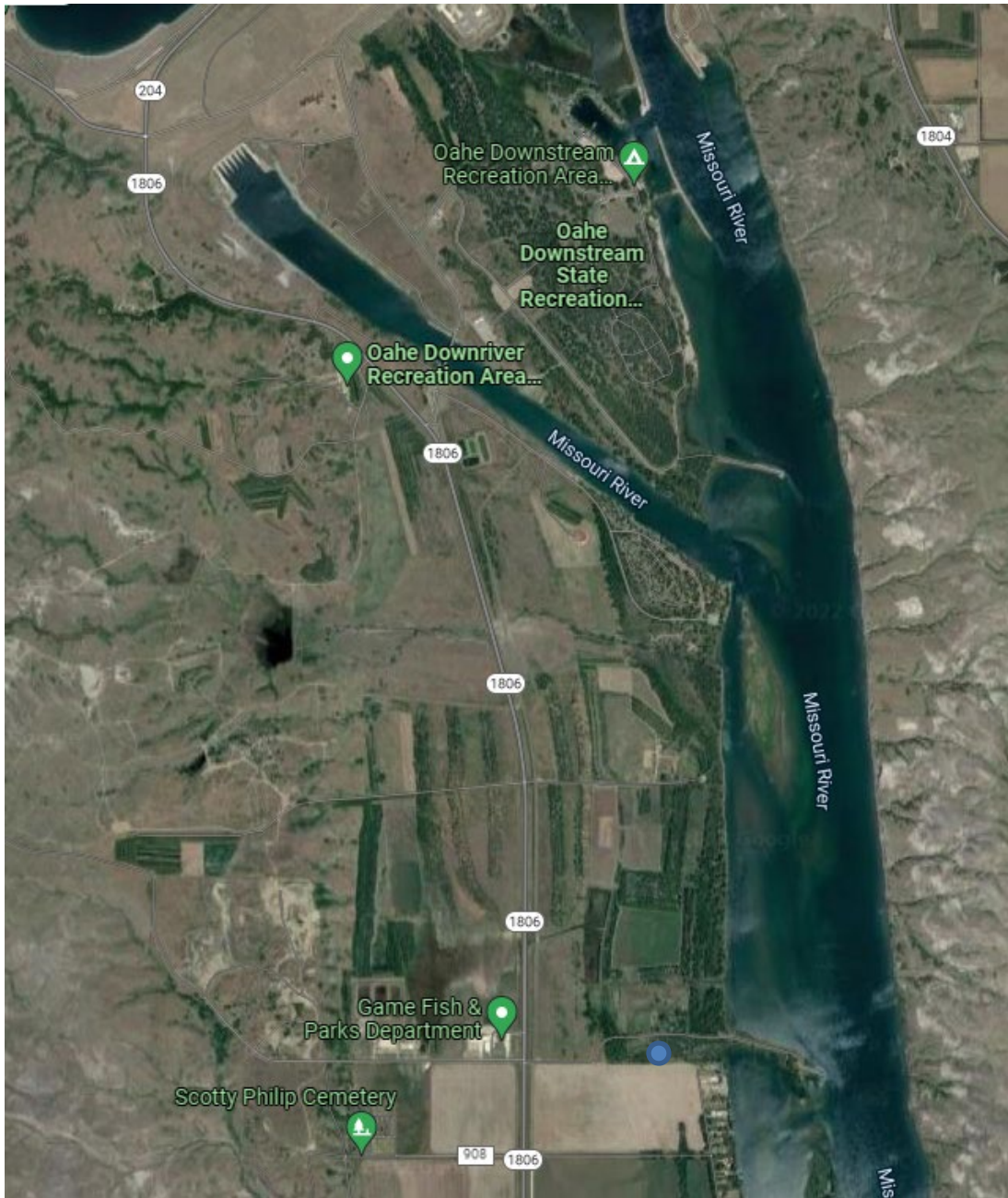
Bird banding update for 2020

Farm Island and Oahe Downstream, South Dakota



South Dakota Game, Fish and Parks' Wildlife Diversity Program staff band birds during the peak of spring and fall migration at two sites in central South Dakota to learn more about how the areas are used by migrants and how that use has changed through the years. The Farm Island State Recreation Area site was established in 1993. The Oahe Downstream Recreation Area site (called Fisherman's Point in this report and also called Diver's Point by local users) was added in 2004.

We temporarily moved our banding operation for spring 2020 banding from Farm Island to an area called the COE (Corps of Engineers) Pumphouse, located at the blue circle on the map below, to reduce the possibility of exposing ourselves and others to COVID-19.

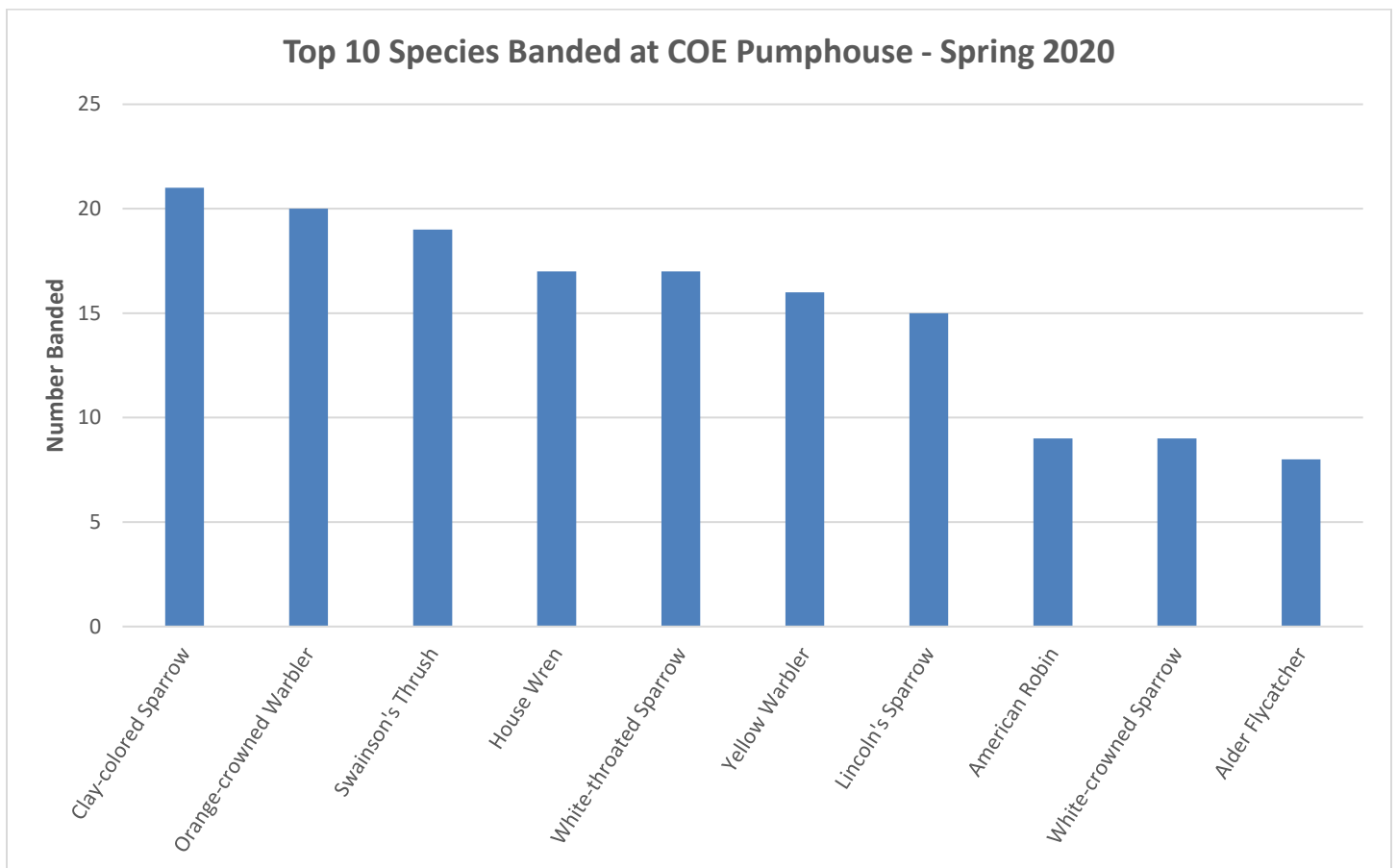


SPRING:

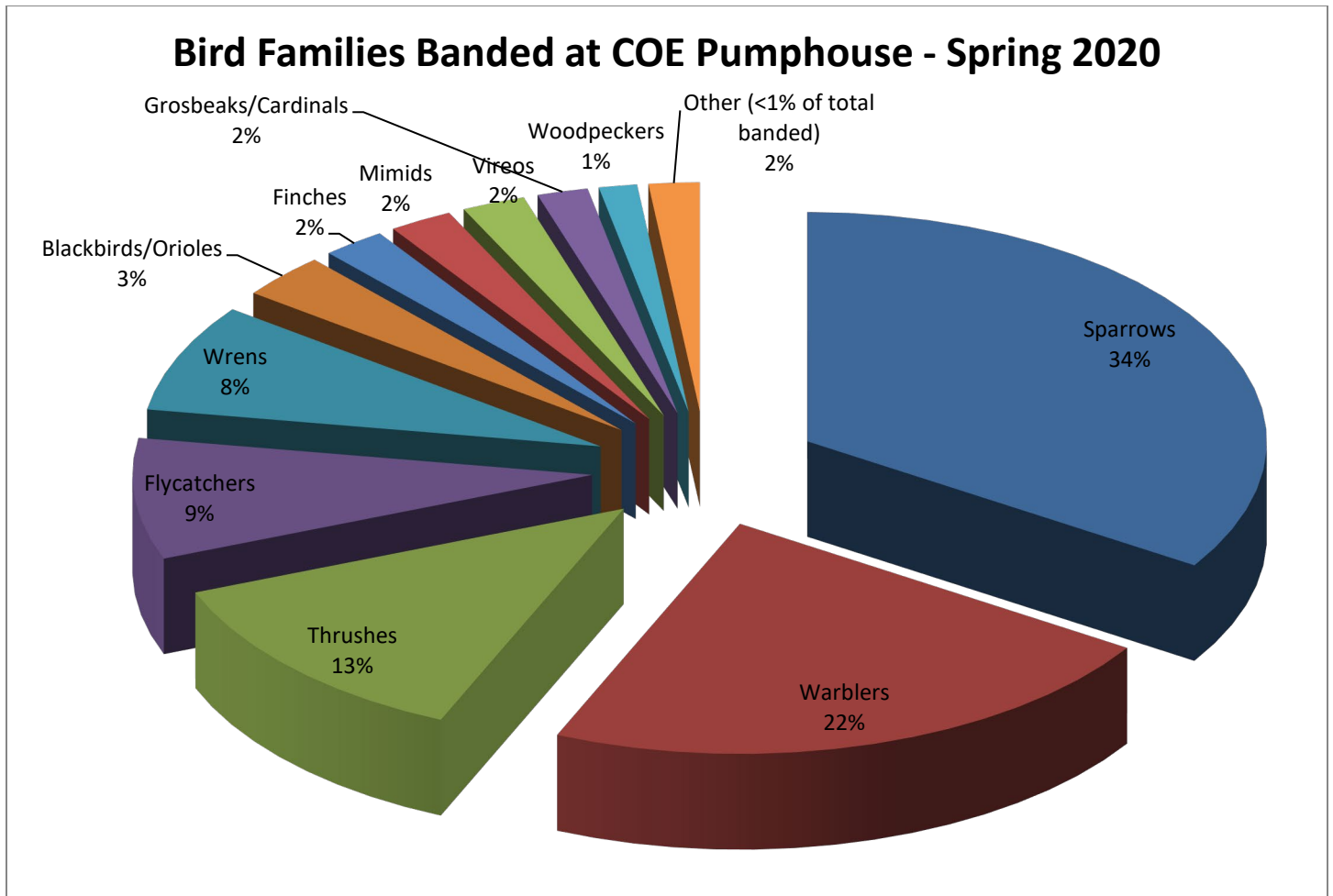
Species: Banding at Fisherman’s Point was limited to three days (28.18 net hours) during this banding season. Captures are shown in the table below.

| Species | # banded |
|-------------------|-----------------|
| Gray Catbird | 3 |
| Spotted Towhee | 1 |
| Swainson’s Thrush | 3 |
| House Wren | 1 |
| Mourning Warbler | 1 |
| Least Flycatcher | 6 |
| Alder Flycatcher | 1 |
| Yellow Warbler | 1 |
| TOTAL | 17 |

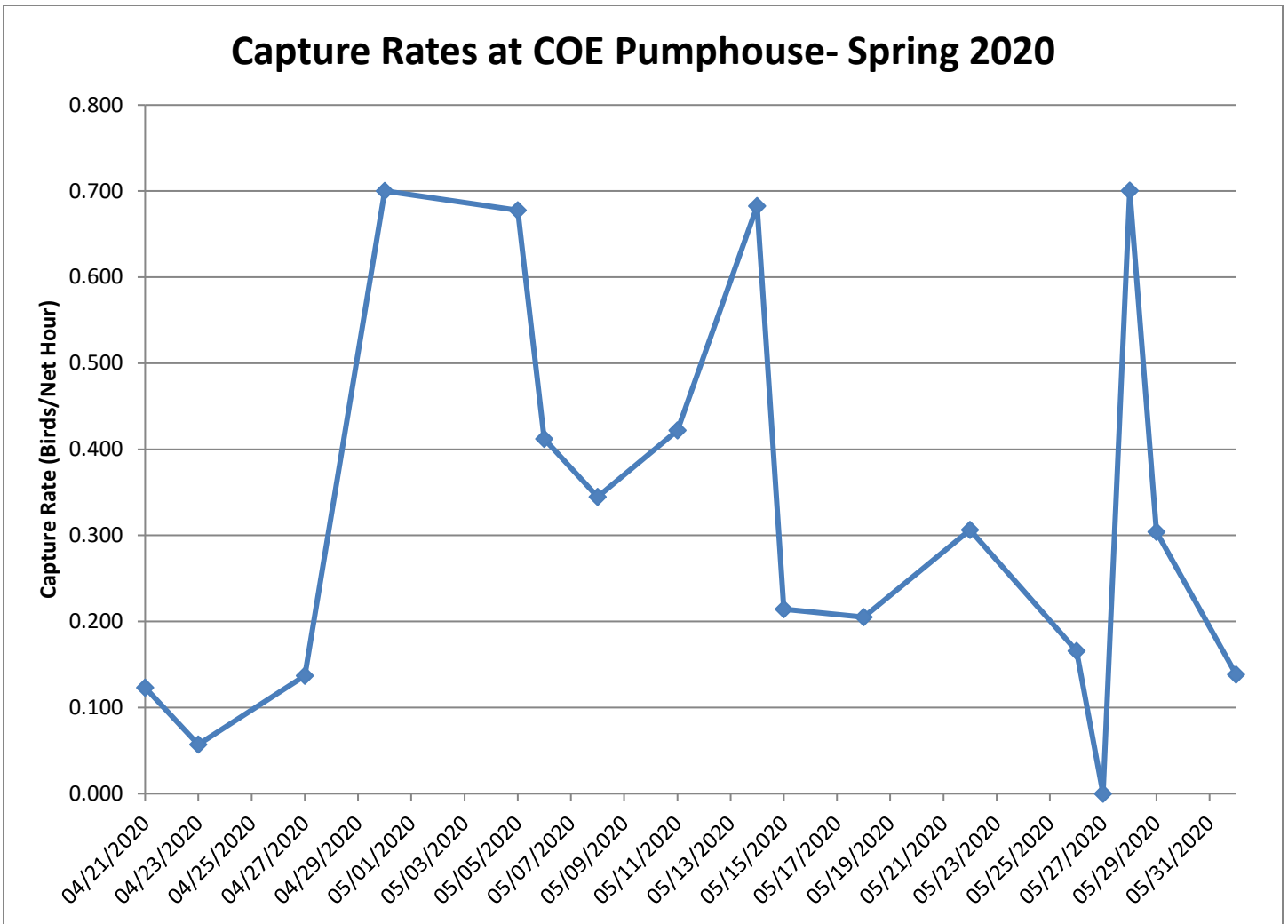
Species most commonly banded at the COE Pumphouse during this banding season are shown below.



Families: Sparrows, warblers, and thrushes were the most commonly captured families at the COE Pumphouse site during this season.



Capture Rates at COE Pumphouse- Spring 2020



Capture rates: The capture rate (number of birds per net hour) at the COE Pumphouse site peaked at 0.7 birds per hour on April 30, 2020 and May 28, 2020.

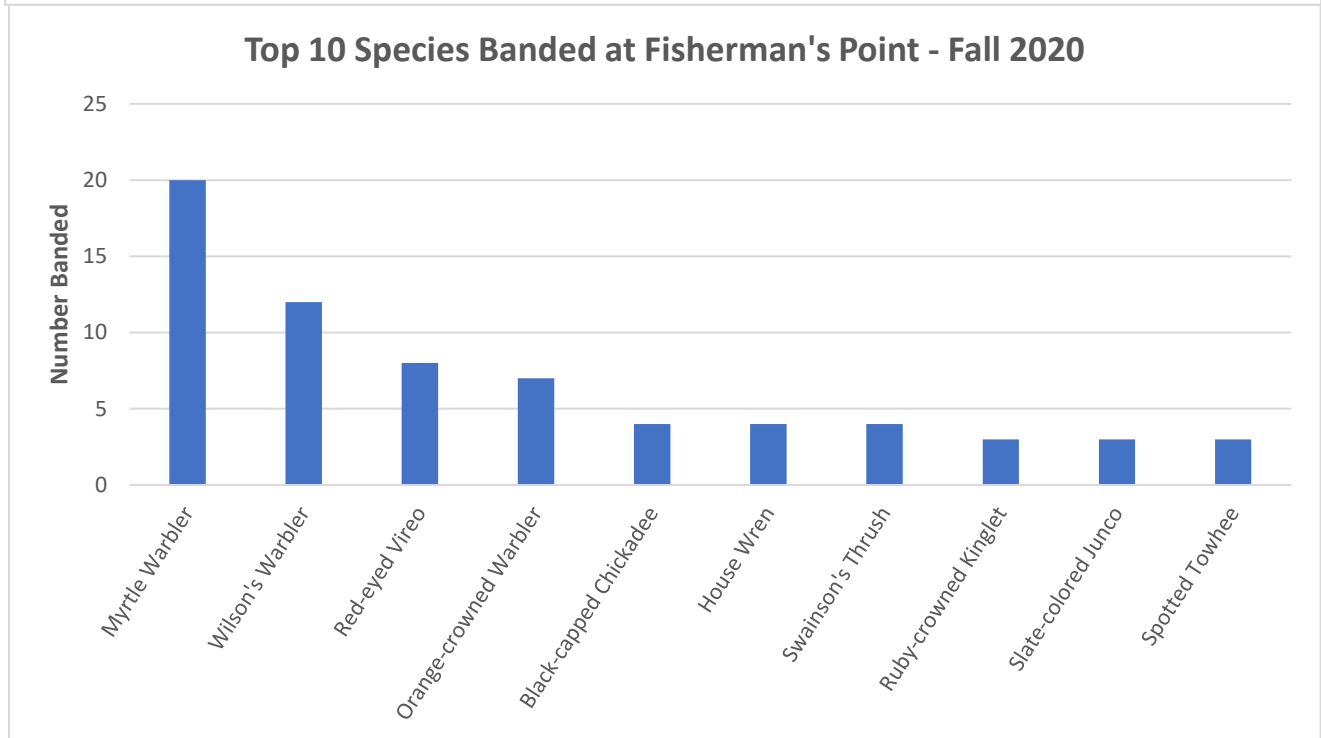
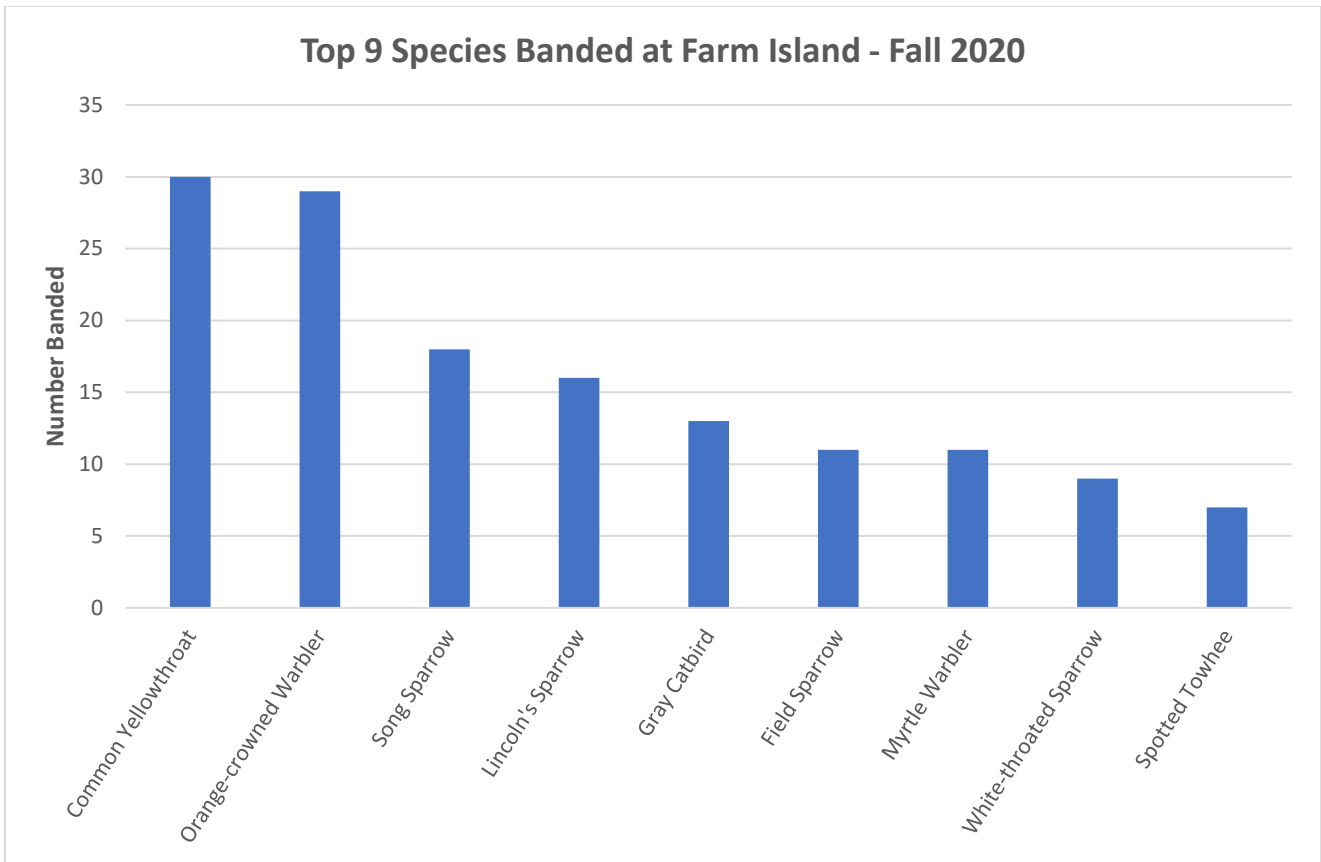
In all, we banded 240 birds during the spring of 2020; 223 birds at the COE Pumphouse of 37 species and 17 birds at Fisherman's Point of 8 species.

Number of birds banded by species at the COE Pumphouse, spring of 2020

| Species | # |
|-------------------------|------------|
| Clay-colored Sparrow | 21 |
| Orange-crowned Warbler | 20 |
| Swainson's Thrush | 19 |
| House Wren | 17 |
| White-throated Sparrow | 17 |
| Yellow Warbler | 16 |
| Lincoln's Sparrow | 15 |
| American Robin | 9 |
| White-crowned Sparrow | 9 |
| Alder Flycatcher | 8 |
| Myrtle Warbler | 7 |
| American Goldfinch | 5 |
| Gray Catbird | 5 |
| Least Flycatcher | 5 |
| Song Sparrow | 5 |
| Traill's Flycatcher | 5 |
| Brown-headed Cowbird | 4 |
| Spotted Towhee | 4 |
| Mourning Warbler | 3 |
| Red-eyed Vireo | 3 |
| Black-capped Chickadee | 2 |
| Black-headed Grosbeak | 2 |
| Chipping Sparrow | 2 |
| Common Yellowthroat | 2 |
| Downy Woodpecker | 2 |
| Harris's Sparrow | 2 |
| Northern Cardinal | 2 |
| Orchard Oriole | 2 |
| Yellow-breasted Chat | 2 |
| Baltimore Oriole | 1 |
| Bell's Vireo | 1 |
| Hairy Woodpecker | 1 |
| Ruby-crowned Kinglet | 1 |
| Slate-colored Junco | 1 |
| Warbling Vireo | 1 |
| White-breasted Nuthatch | 1 |
| Willow Flycatcher | 1 |
| TOTAL | 223 |

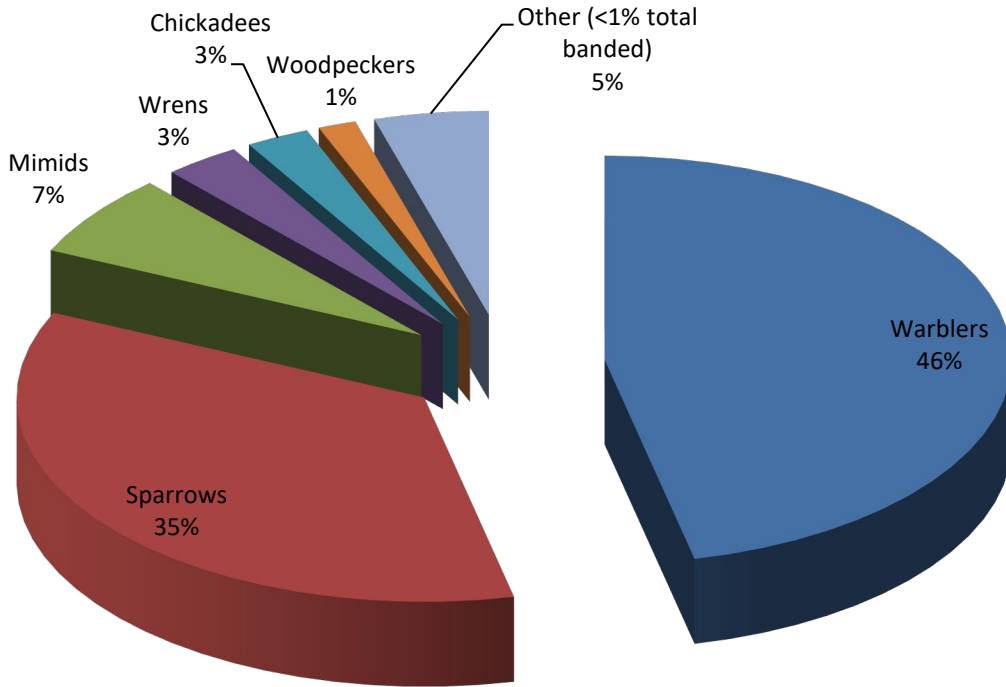
FALL:

Species: Species most commonly banded at both sites during this banding season were Orange-crowned Warbler, Myrtle Warbler, Common Yellowthroat, Song Sparrow, and Lincoln's Sparrow.

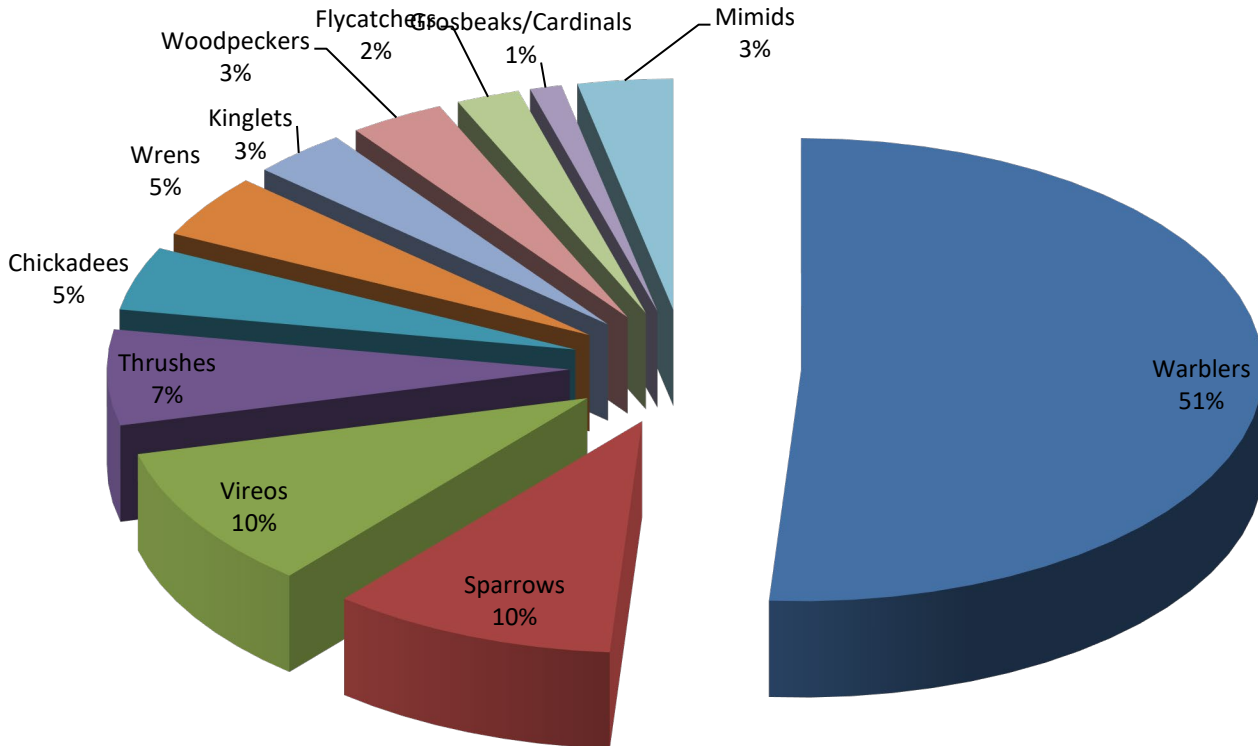


Families: Warblers, sparrows, and mimids were the most commonly captured families at both sites during this season.

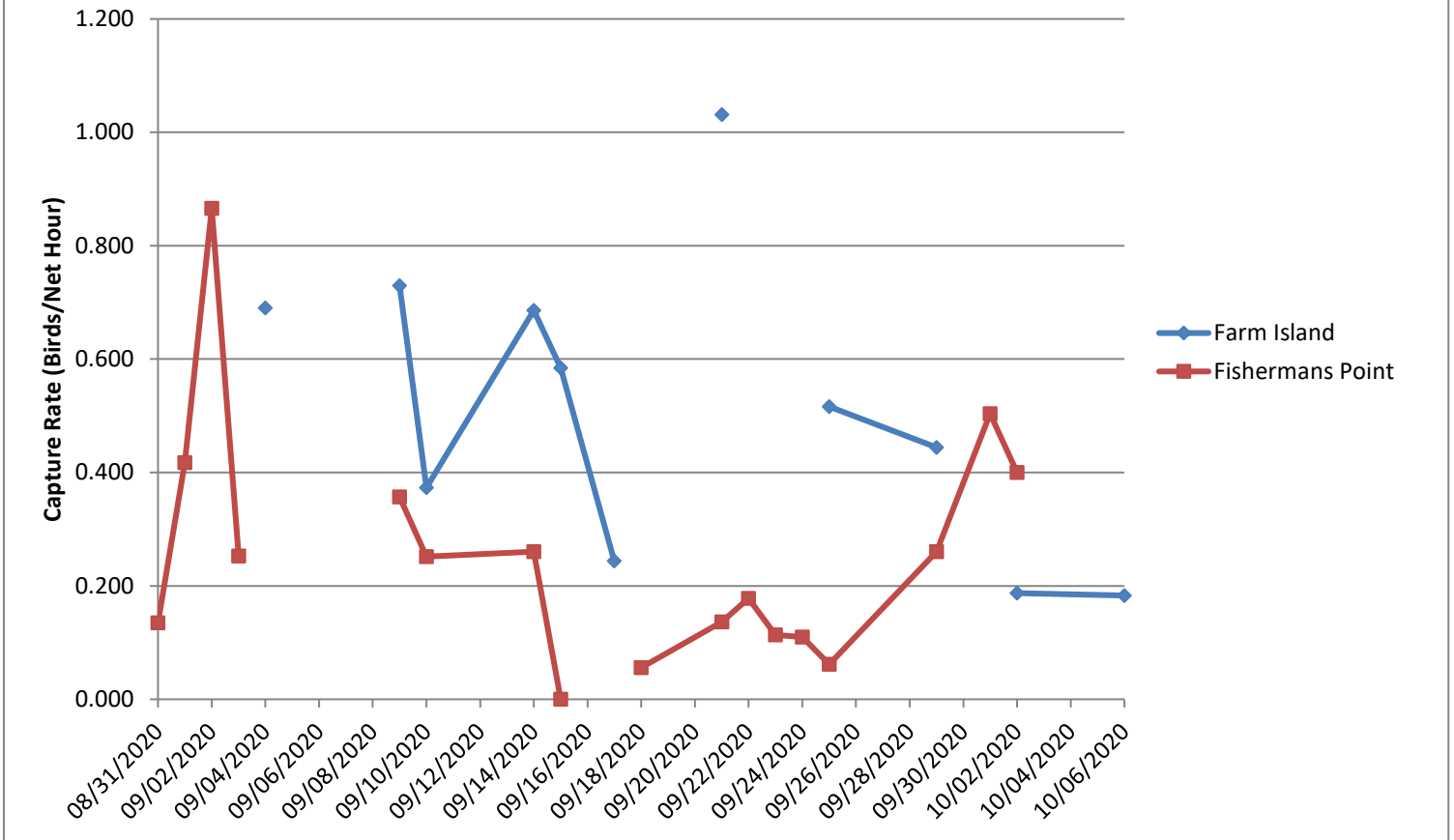
Bird Families Banded at Farm Island- Fall 2020



Bird Families Banded Fisherman's Point- Fall 2020



Capture Rates at Farm Island and Fisherman's Point - Fall 2020



Capture rates: The capture rate (number of birds per net hour) at Farm Island peaked on September 21, with a value of 1.031 birds/net hour. Fisherman's Point's peak occurred on September 2 at 0.866 birds/net hour.

In all, we banded 288 birds during the fall of 2020; 198 birds at Farm Island of 30 species and 90 birds at Fisherman's Point of 28 species.

Number of birds banded by species at Farm Island, fall of 2020

| Species | Total |
|-------------------------|--------------|
| Common Yellowthroat | 30 |
| Orange-crowned Warbler | 29 |
| Song Sparrow | 18 |
| Lincoln's Sparrow | 16 |
| Gray Catbird | 13 |
| Field Sparrow | 11 |
| Myrtle Warbler | 11 |
| White-throated Sparrow | 9 |
| Spotted Towhee | 7 |
| Clay-colored Sparrow | 6 |
| House Wren | 6 |
| Yellow Warbler | 6 |
| Black-capped Chickadee | 5 |
| Nashville Warbler | 5 |
| Wilson's Warbler | 4 |
| American Redstart | 3 |
| Ruby-crowned Kinglet | 2 |
| Warbling Vireo | 2 |
| White-crowned Sparrow | 2 |
| Yellow-breasted Chat | 2 |
| Yellow-shafted Flicker | 2 |
| Black-and-white Warbler | 1 |
| Blue Jay | 1 |
| Brown Thrasher | 1 |
| Downy Woodpecker | 1 |
| Marsh Wren | 1 |
| Northern Cardinal | 1 |
| Rose-breasted Grosbeak | 1 |
| Swamp Sparrow | 1 |
| Swainson's Thrush | 1 |
| TOTAL | 198 |

Number of birds banded by species at Fisherman's Point, fall of 2020

| Species | Total |
|--------------------------|--------------|
| Myrtle Warbler | 20 |
| Wilson's Warbler | 12 |
| Red-eyed Vireo | 8 |
| Orange-crowned Warbler | 7 |
| Black-capped Chickadee | 4 |
| House Wren | 4 |
| Swainson's Thrush | 4 |
| Ruby-crowned Kinglet | 3 |
| Slate-colored Junco | 3 |
| Spotted Towhee | 3 |
| American Robin | 2 |
| Brown Thrasher | 2 |
| Yellow Warbler | 2 |
| Yellow-shafted Flicker | 2 |
| Blackpoll Warbler | 1 |
| Common Yellowthroat | 1 |
| Downy Woodpecker | 1 |
| Field Sparrow | 1 |
| Great Crested Flycatcher | 1 |
| Gray Catbird | 1 |
| Least Flycatcher | 1 |
| Lincoln's Sparrow | 1 |
| Magnolia Warbler | 1 |
| Mourning Warbler | 1 |
| Nashville Warbler | 1 |
| Northern Cardinal | 1 |
| Warbling Vireo | 1 |
| White-throated Sparrow | 1 |
| TOTAL | 90 |

Banders and Acknowledgements: Eileen Dowd Stukel, Silka Kempema, and Casey Heimerl.
U.S.G.S. Banding Permit #21966.

This activity is supported by Wildlife and Sport Fish Restoration Program Project W-95-R-51, Study 9509-D and matching funds from SDGFP, Wildlife Division.

Figures prepared by Casey Heimerl.