

WALK-IN AREA

frequently asked questions for hunters

Q: Are Walk-In Areas, CHAPs or CREPs public land?

A: No, these are private land leased by GFP for public hunting access.

Q: Can I use lead shot on Walk-In Areas, CHAPs or CREPs?

A: Yes, lead shot is allowed for small game hunting on Walk-In Areas, CREPs and CHAPs. Non-toxic shot is still required for waterfowl hunting.

Q: Can I hunt Walk-in Areas, CHAPs or CREPs with my special buck license?

A: No

Q: Can a mentor antelope tag be used on Walk-in-Areas, CHAPs or CREPs?

A: No

Q: Can trail cameras be placed on Walk-in Areas, CREP, or CHAP lands?

A: No, trail cameras are not allowed on these lands without landowner permission.

Q: Can I hunt coyotes with night vision on Walk-in Areas, CREP or CHAP lands?

A: Yes, but only with the landowners permission and only from January 1 to August 31.

Q: Can tree stands and portable blinds be placed/used on Walk-in Areas and CREP?

A: Yes, as long as they are not permanent. Portable tree stands, portable blinds, and climbing devices that do not utilize nails, wire, or bolts for attachment are allowed from August 1 through March 31. Portable blinds may be used during the spring turkey seasons by licensed spring turkey hunters.

Q: Can e-bikes be used on Walk-in Areas, CREP or CHAP lands?

A: No, these lands are open to foot traffic only, unless there is a posted designated trail.

Q: Why are there cattle on Walk-In Areas?

A: GFP leases the right for the public to access Walk-In Areas for hunting purposes only. Walk-In Areas are privately owned working farms and ranches, so normal farming and ranching activities are likely present.

Q: Can I hunt a Walk-In Area if cattle are on it?

A: Yes, hunters can hunt Walk-In Areas while cattle are present. Many people mistakenly think the road right of way hunting restriction within 660 feet of an occupied dwelling, church, schoolhouse, or livestock applies to hunting on Walk-In Areas. There are no restrictions to hunting on a Walk-In Area within 660 feet of anything.

Q: Why is rangeland/pastureland in the Walk-In Area program?

A: These lands primarily provide hunting opportunities for deer, elk, pronghorn antelope, prairie grouse, prairie dogs, and coyotes but can also provide turkey, waterfowl, and pheasant hunting opportunity depending on their management and the habitat on the surrounding landscape.

Q: Why is cropland in the Walk-In Area program?

A: Cropland primarily provides field waterfowl hunting opportunity, but can also provide access to islands of habitat within a field that may contain other game species. Sometimes croplands provide access to a piece of land locked or hard to get to public land.

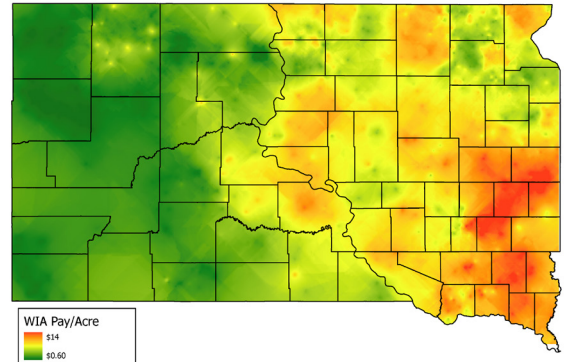
Q: How much do farmers and ranchers get paid to put their land in the Walk-in Area program?

A: Annual payments range from \$0.60 to \$14 per acre and are determined by numerous factors including amount and type of hunting opportunity, size of the area, habitat conditions, anticipated hunting use, and if it unlocks inaccessible public land.

Land that contains CRP or similar habitat in high pheasant density areas or near Sioux Falls receives the highest payment rates.

Q: Where does the money come from to pay for the Walk-In Area program?

Walk-in Area Annual Payment Range



A: 75% of the funding for the Walk-In Area program comes from federal funds generated by an excise tax on the sale of most firearms, ammunition, and archery equipment created by the Federal Aid in Wildlife Restoration Act. The other 25% is from hunting license sales revenue. GFP also offers signing bonuses to landowners to place CRP or other undisturbed habitat land in the Walk-In Area program for multiple years. These signing bonuses have been funded by grants from USDA through the Voluntary Public Access and Habitat Incentive Program, a program that is part of the federal Farm Bill, or by revenue from the sale of the Habitat Stamp.

Q: How do I find lands to hunt that are in the Walk-In Area program?

A: Walk-In Areas as well as any other public land that is open to public hunting can be found in the annually printed public hunting atlas, which is available for FREE at any sporting goods store, gas station, or other retailer that sells hunting licenses or at any GFP office. We will even send you a copy in the mail if you request it here. apps.sd.gov/gf100specialevents/InfoItemsRequest.aspx Walk-In Areas are also displayed digitally on our website through an interactive public hunting atlas, sdgfp.maps.arcgis.com/apps/webappviewer/index.html?id=946eccdaadf84df6aa2bcf08e9fb1aaf. If you have a smartphone or tablet you can view this same map through the Go Outdoors SD app. You can also add the GFP hunting atlas map to the Avenza Maps app for use in areas where cell coverage doesn't exist.

Q: Can I see which Walk-in Areas have CRP in the hunting atlas?

A: Yes, Walk-in Areas and CREP with undisturbed habitat like CRP, wetlands and trees are shown in the hunting atlas with a green outline.