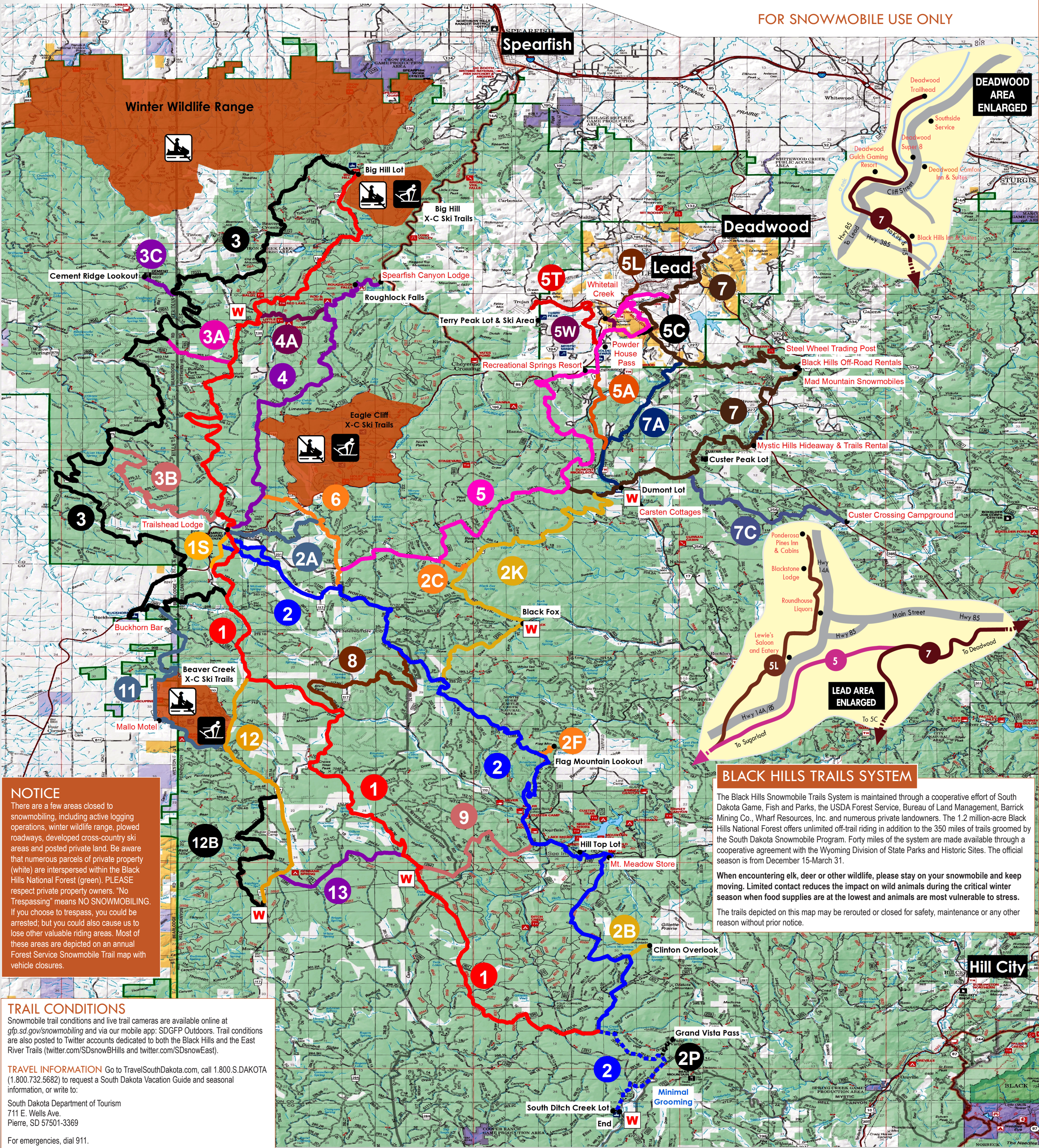




# BLACK HILLS TRAILS SYSTEM

## 350 MILES

FOR SNOWMOBILE USE ONLY



**NOTICE**  
There are a few areas closed to snowmobiling, including active logging operations, winter wildlife range, plowed roadways, developed cross-country ski areas and posted private land. Be aware that numerous parcels of private property (white) are interspersed within the Black Hills National Forest (green). PLEASE respect private property owners. "No Trespassing" means NO SNOWMOBILING. If you choose to trespass, you could be arrested; but you could also cause us to lose other valuable riding areas. Most of these areas are depicted on an annual Forest Service Snowmobile Trail map with vehicle closures.

**TRAIL CONDITIONS**  
Snowmobile trail conditions and live trail cameras are available online at [gfp.sd.gov/snowmobiling](http://gfp.sd.gov/snowmobiling) and via our mobile app: SDGFP Outdoors. Trail conditions are also posted to Twitter accounts dedicated to both the Black Hills and the East River Trails ([twitter.com/SDsnowBHills](https://twitter.com/SDsnowBHills) and [twitter.com/SDsnowEast](https://twitter.com/SDsnowEast)).

**TRAVEL INFORMATION** Go to [TravelSouthDakota.com](http://TravelSouthDakota.com), call 1.800.5.DAKOTA (1.800.732.5682) to request a South Dakota Vacation Guide and seasonal information, or write to:  
South Dakota Department of Tourism  
711 E. Wells Ave.  
Pierre, SD 57501-3369  
For emergencies, dial 911.

### BLACK HILLS TRAILS SYSTEM

The Black Hills Snowmobile Trails System is maintained through a cooperative effort of South Dakota Game, Fish and Parks, the USDA Forest Service, Bureau of Land Management, Barrick Mining Co., Wharf Resources, Inc. and numerous private landowners. The 1.2 million-acre Black Hills National Forest offers unlimited off-trail riding in addition to the 350 miles of trails groomed by the South Dakota Snowmobile Program. Forty miles of the system are made available through a cooperative agreement with the Wyoming Division of State Parks and Historic Sites. The official season is from December 15-March 31.

When encountering elk, deer or other wildlife, please stay on your snowmobile and keep moving. Limited contact reduces the impact on wild animals during the critical winter season when food supplies are at the lowest and animals are most vulnerable to stress.

The trails depicted on this map may be rerouted or closed for safety, maintenance or any other reason without prior notice.

### TRAIL DIRECTORY

SITE	LOCATION	FACILITIES
ON-TRAIL BUSINESSES		
Black Hills Central Reservations	Box 523, Deadwood, SD 57732 1.800.529.0105   <a href="http://blackhillsvacations.com">blackhillsvacations.com</a>	Snowmobile rentals, lodging, food reservation service Hours of operation: M-F 7a.m.-6p.m., Sat-Sun 8a.m.-4p.m.
Black Hills Inn & Suites	Trail #7; 1.5 mi. S of Deadwood Main St. on Hwy 385. 888.886.6835   <a href="http://blackhillsinn.com">blackhillsinn.com</a>	Indoor pool and hot tub Continental Breakfast (Open Daily)
Black Hills Off-Road Rentals	Trail #7; 6 mi. S of Deadwood on Hwy 385. Located at Steel Wheel Campground. 605.584.4777   <a href="http://blackhillsoffroadrentals.com">blackhillsoffroadrentals.com</a>	(Open Daily 8a.m.-5p.m.)
Blackstone Lodge & Suites	Trail #5L, N of Lead on Hwy 14A & Hwy 85 605.584.2000	(Open 24/7)
Buckhorn Bar & Grill	Trail #3; 25380 N Hwy 85. 307.746.9487	(Open Fri.-Sun. 9a.m.-2a.m., Mon.-Thur. 9a.m.-10p.m.)
Carsten Cottages	21981 N Rochford Rd., Lead. 605.584.2248	(Open 24/7)
Custer Crossing Campground	Trail #7C; 15 miles S of Deadwood on Hwy 385. 605.584.1009	(Open Wed.-Mon., 7a.m.-3p.m., closed Tuesdays, Thanksgiving and Christmas)
Deadwood Comfort Inn & Suites	Trail #7; 225 Cliff St., 1 mi. S of Main St. Deadwood on Hwy 85 800.961.3096   605.578.7550 <a href="http://deadwoodcomfortinn.com">deadwoodcomfortinn.com</a>	Lounge, pool/hot tub, gaming kids arcade, pool tables, darts (Open 24/7)
Deadwood Gulch Gaming Resort	Trail #7; 1 mi. S of Deadwood Main St. on Hwy 85. 800.695.1876   605.578.1294 <a href="http://deadwoodgulchresort.com">deadwoodgulchresort.com</a>	Casino, indoor hot tub Packages available (Open 24/7)
Deadwood Super 8	Trail #7; 196 Cliff St., Deadwood. 605.578.2535   <a href="http://deadwoodsUPER8.com">deadwoodsUPER8.com</a>	(Open 24 hrs.)
Lewie's Saloon and Eatery	Trail #5; .25 mi. from Terry Peak turn-off on Hwy 85-14A. 605.584.1324	(Open 11a.m.-11p.m.)
Mad Mountain Snowmobiles	Trail #7; 6 mi. S of Deadwood on Hwy 385. 605.578.1878   <a href="http://madmountainsnowmobiles.com">madmountainsnowmobiles.com</a>	(Open daily 8a.m.-4:30p.m., Tues/Wed by appointment closed Thanksgiving and Christmas)
Mallo Camp & Motel	Trail #11; 478 Mallo Rd 4.5 mi. E of 4 Corners on City Rd 810. 307.746.4094	(Open daily, Group rates available)
Mt. Meadow Store and Campground, LLC.	Trail #2; 14 mi. NW of Hill City off Deerfield Rd 11321 Gillette Prairie Rd. 605.574.2636	(Open daily 8a.m.-7p.m.)
Mystic Hills Hideaway & Trails Rentals	Trail #7; 10 mi. S of Deadwood on Hwy 385, then .5 mi. W. on FS Rd 216. 605.584.4794	(Open M-Th 11a.m.-4p.m., Fri-Sat 11a.m.-8p.m., Closed Sunday)
Ponderosa Pines Inn and Cabins	Trail #5L, North Lead on Hwy 14A, Lead. 605.584.3321	(Open Sun.-Thurs. 9a.m.-8p.m., Fri.-Sat. 9a.m.-10p.m.)
Recreational Springs Resort	Trail #5; 6 mi. S of Lead on Hwy 85. 605.584.1228	(Open Sun.-Thurs. 7a.m.-8p.m., Fri-Sat. 7a.m.-9p.m.)
Roundhouse Liquors	Trail #5L; Intersection of Hwy14A & Hwy 85. in Lead. 605.584.3300	(Open daily 11a.m.-11p.m.)
Spearfish Canyon Lodge	Trail #4; 14 mi. S of Spearfish on Hwy 14A in Spearfish Canyon. 877.975.6343   605.584.3435 <a href="http://spfcanyon.com">spfcanyon.com</a>	(Open 24/7) (Sports Centers: 7a.m.-5p.m. Latch String: 7a.m.-8p.m.)
Southside Service	End of Trail #7, Deadwood	(Open M-F 7a.m.-6p.m., Sat. 7a.m.-Noon, Closed Sun.) 24 hr. pay at the pump
Steel Wheel Cabins & Trading Post	Trail #7; 5.5 mi. S of Deadwood on Hwy 385. 605.578.9767	(Trading Post: M-Sat. 6a.m.-8p.m., Sun. 7a.m.-8p.m.)
Terry Peak Ski Area	End of Trail #5T; 21120 Stewart Slope Rd. Lead 605.584.2165	(Open daily 8a.m.-4:30p.m.)
Trailhead Lodge	Trail #1; 21 miles SW of Lead on Hwy 85. 605.584.3464	(Open M-Sat 8a.m.-10p.m. Sun 8a.m.-8p.m.)
Whitetail Creek Resort	Trail #5W; 2 mi. SW of Lead on Hwy 14A/85. 605.584.9085	(Open daily 8a.m.-8p.m.)
PARKING AREAS		
Big Hill Lot	Trail #1; 8 mi. SW of Spearfish on FSR 134. Chains or 4WD advised.	PR
Custer Peak Lot	Trail #7; 11 mi. S of Deadwood on Hwy 385 and .5 mi. west on FSR 216.	PR
Hill Top Lot	Trail #2; 15 mi. NW of Hill City on Deefield Rd.	PR
Dumont Lot	Trail #7; 4 mi. SW of Lead on Hwy 85 and 6 mi. S on Rochford Rd.	PRW
Recreational Springs Lot	Trail #5; 6 mi. S of Lead on Hwy 85	PR
South Ditch Creek Lot	Trail #2S; Turn W off of Hwy 385 by Heritage Village, .6 mi. W on Medicine Mtn. Rd., 2.9 mi. W on Custer Limestone Rd., .5 N on Saginaw Rd., 3.8 mi. W on Elliott Rd., 2.6 mi. N on Ditch Creek Rd.	PRW
Spearfish Canyon Lot	Trail #4; W of Spearfish Canyon Lodge.	PR
Steel Wheel Cabins & Trading Post	Trail #7; 5.5 mi. S of Deadwood on Hwy 385.	PR
Terry Peak Lot	Trail #5T; 3.1 mi. Nevada Gulch Rd., .6 mi. on Stewart Slope Rd.	P
Trailhead Lot	Trails #1 & 2; 21 mi. S of Lead on left side of Hwy 85.	PR
OTHER ATTRACTIONS		
Black Fox Warming Shelter	On Trail #2; portable warming shelter located at scenic Black Fox Campground.	RW
Cement Ridge Lookout	On Trail #3C; lower level of an active fire lookout serves as a wind shelter with spectacular view of four-state area.	R
Clinton Overlook	On Trail #2B; scenic vista overlooking Gillette Prairie.	
Flag Mountain Lookout	On Trail #2F; spectacular vista overlooking Reynolds Prairie and surrounding area.	
Grand Vista Pass	On Trail #2P; spectacular vista of the Needles and surrounding area.	
Roughlock Falls	On Trail #4; scenic waterfalls.	

### LEGEND

- |                              |                      |                      |
|------------------------------|----------------------|----------------------|
| Telephone                    | Parking              | Lodging              |
| Restrooms                    | Gas                  | Food                 |
| Museum/Interpretive Displays | Snowmobile Servicing | Snowmobile Rental    |
| No Snowmobiling Area         | Warming Shelter      | X-C Ski Trail System |

Green denotes Forest Service lands while the white denotes private property.