

---

# **South Dakota GAME REPORT**

**No. 2025 – 08**

---

## ***2024***

**Annual Report**

### **SMALL GAME, UPLAND BIRD & MIGRATORY GAME BIRD HARVEST PROJECTIONS**

**Corey Huxoll**

**Game Harvest Surveys Coordinator  
South Dakota Department of Game, Fish and Parks  
Division of Wildlife  
Joe Foss Building, 523 E. Capitol Ave.  
Pierre, South Dakota 57501-3182**



## PREFACE

Harvest estimates reported herein for the 2024 small game, upland bird, and migratory bird seasons were developed as described in Wildlife Survey Manual, 2009-2015, South Dakota Department of Game, Fish and Parks. If species specific methodologies are not reported there, the methodologies are presented within this report.

Corey Huxoll, (Division of Wildlife, Office of Wildlife Administration), was responsible for development of these harvest estimates as part of Federal Aid for Wildlife Restoration as Project W-95-R. All harvest survey responses were received through the Internet using Survey123 Software.

This report was funded in part by Federal Aid Project W-95-R



## INDEX

	Page
Preface .....	i
<b>STATEWIDE COMBINED HARVEST SUMMARY</b> .....	<b>1</b>
<b>UPLAND GAME</b>	
<b>Cottontail &amp; Squirrel</b> -- season summary.....	2
harvest projections .....	3
cottontail season trends .....	3
squirrel season trends .....	4
<b>UPLAND BIRD</b>	
<b>Pheasant</b> -- season summary .....	5
harvest projections .....	6
resident-only weekend participation & bag.....	6
youth-only season participation .....	6
total harvest distribution .....	7
resident harvest distribution .....	8
nonresident harvest distribution .....	9
season participation & harvest trends .....	10
season harvest & bag trends.....	10
harvest by month.....	11
shooting preserve harvest .....	12
<b>Partridge</b> -- season summary.....	13
harvest projections .....	14
season trends.....	14
<b>Prairie Chicken &amp; Sharp-tailed Grouse</b> -- season summary.....	15
harvest projections .....	16
season trends.....	16
resident harvest distribution .....	17
nonresident harvest distribution .....	18
<b>Sage Grouse</b> -- season summary .....	19
<b>OTHER GAME BIRDS</b>	
<b>Mourning Dove</b> -- season summary .....	20
harvest projections .....	21
season trends.....	21
hunter and harvest distribution by county.....	22

## **WATERFOWL**

<b>Waterfowl Hunter Summary</b> .....	23
harvest projections.....	23
<b>Tundra Swan -- season summary</b> .....	24
harvest projections.....	24
harvest distribution by county .....	25
season trends .....	25
<b>Ducks (all species) -- season summary</b> .....	26
harvest projections.....	26
resident hunter and harvest distribution by county.....	27
nonresident hunter distribution by county .....	28
season trends .....	29
<b>Canada Geese, All Seasons -- season summary</b> .....	30
harvest projections.....	31
season trends .....	31
resident hunter and harvest distribution by county.....	32
<b>Canada Geese, Early Fall Season -- season summary</b> .....	33
harvest projections.....	34
season trends .....	34
<b>Canada Geese, Special Season -- season summary</b> .....	35
harvest projections.....	35
season trends .....	36
<b>Canada Geese, August Management Take -- season summary</b> .....	37
harvest projections.....	38
history of season dates and counties open to hunting .....	38
<b>Light Geese, Regular Season -- season summary</b> .....	39
harvest projections.....	39
season trends .....	40
<b>Light Geese, Spring Conservation Order -- season summary</b> .....	41
harvest projections.....	42
<b>White-fronted Geese -- season summary</b> .....	46
harvest projections.....	46
season trends .....	47
<b>HARVEST SURVEY RESPONSE RATES</b> .....	48



# Statewide Combined Harvest

2024 Statewide Small Game, Upland Bird & Migratory Game Bird Harvest Projection Summary																last revised: 12 June 2025
Harvest Statistic	Cottontail	Squirrel	Pheasant	Partridge	Prairie Grouse	Tundra Swan	Ducks	Canada Geese (all seasons)	Canada Geese (August Take)	Canada Geese (Sept. season)	Canada Geese (special season)	Light Geese (regular season)	Light Geese (conserv. order)	White-fronted Geese	Mourning Dove	Grand Totals
<b><u>Licenses/Tags</u></b>	<b>Small Game</b>		<b>Upland Birds</b>			<b>Waterfowl</b>										
<b>Resident</b>																
Licenses Available	unlim.	unlim.	unlim.	unlim.	unlim.	1,100	unlim.	unlim.	unlim.	unlim.	800	unlim.	unlim.	unlim.	unlim.	
Proj. Active/Sold/Issued	3,767	1,591	58,195	3,349	10,898	1,000	11,227	7,865	985	2,428	560	2,558	3,673	1,662	7,613	
<b>Nonresident</b>																
Licenses Available	unlim.	unlim.	unlim.	unlim.	unlim.	200	unlim.	unlim.	N/A	unlim.	N/A	unlim.	unlim.	unlim.	unlim.	
Proj. Active/Sold/Issued	574	148	82,067	3,185	8,325	300	4,681	2,201	N/A	237	N/A	844	4,229	608	529	
<b>Totals</b>																
Licenses Available	unlim.	unlim.	unlim.	unlim.	unlim.	1,300	unlim.	unlim.	unlim.	unlim.	800	unlim.	unlim.	unlim.	unlim.	
Proj. Active/Sold/Issued	4,342	1,739	140,262	6,535	19,223	1,300	15,908	10,067	985	2,664	560	3,401	7,902	2,269	8,142	221,090
<b><u>Hunting Recreation</u></b>																
<b>Residents</b>																
Average Days Hunted	6.18	4.75	8.12	5.32	6.29	4.56	7.45	7.05	2.58	N/A	1.16	6.35	6.62	6.00	4.55	
Total Days Hunted	22,681	7,096	472,646	17,813	70,017	3,197	83,631	55,463	2,546	N/A	413	16,244	24,316	9,964	34,649	817,717
Average Season Bag	5.19	3.33	10.09	1.66	6.51	N/A	15.70	8.33	11.52	8.15	1.38	22.60	29.09	2.82	21.24	
Mean Satisfaction Score	5.26	5.26	5.23	5.23	5.23	5.17	4.85	4.71	-	4.71	5.03	4.79	-	-	5.09	
<b>Nonresidents</b>																
Average Days Hunted	4.31	2.83	4.42	4.67	4.14	4.86	4.30	4.12	-	3.30	-	4.05	4.35	3.75	3.42	
Total Days Hunted	2,456	454	362,914	14,865	34,463	959	20,148	8,844	-	780	-	3,420	18,401	2,281	1,810	471,796
Average Season Bag	2.50	1.50	8.82	1.84	3.40	N/A	11.71	2.41	-	9.48	-	12.51	28.78	1.87	21.88	
Mean Satisfaction Score	5.63	5.63	5.85	5.85	5.85	5.07	5.18	5.10	-	5.13	-	5.11	-	-	5.69	
<b>Total Days Hunted</b>	25,137	7,550	835,560	32,679	104,480	4,156	103,779	64,307	2,546	N/A	413	19,664	42,717	12,245	36,459	1,289,512
<b><u>Harvest</u></b>																
Residents	19,559	5,173	587,346	5,674	70,956	N/A	176,323	65,542	11,350	19,782	492	57,814	106,853	4,687	161,679	
Nonresidents	1,378	382	723,977	5,796	27,970	N/A	54,802	5,261	-	2,243	-	10,556	121,692	1,134	11,571	
<b>Total</b>	20,937	5,556	1,311,323	11,471	98,926	232	231,125	70,803	11,350	22,025	492	68,370	228,546	5,821	173,250	2,228,602

## **COTTONTAIL & SQUIRREL**

The 2024 cottontail rabbit and tree squirrel seasons covered 1 September 2024 - 28 February 2025. Harvest surveys were sent to resident and nonresident hunters after the close of the pheasant season on 31 January 2025. It is assumed that this captured the majority of cottontail and squirrel hunting and harvest.

For cottontail, the daily limit was 10, possession 30, and the season was open statewide. For squirrel, the daily limit was 5, possession 15, and the season was open statewide. Residents holding small game, 1-day small game, adult or senior combination, or youth small game licenses were eligible to participate in the season. Nonresidents were required to obtain either a small game or a youth small game license to hunt upland game.

In 2024, there were 86,366 resident and 87,475 nonresident licenses nonresident licenses issued that allowed holders to hunt small game. Approximately 15,000 residents and 13,000 nonresidents were surveyed for the small game seasons. Survey response rates were 27% for residents and 32% for nonresidents.

Based on survey responses indicating at least one day of hunting cottontails, there were a projected 3,767 resident and 574 nonresident cottontail hunters. Based on survey responses indicating at least one day of hunting squirrels, there were a projected 1,591 resident and 148 nonresident hunters. An estimated 20,937 cottontails and 5,556 squirrels were harvested during the 2024 small game seasons.

When asked their satisfaction on the season, (1 being least satisfied, 7 being most satisfied), resident hunters reported an average satisfaction level of 5.26, while nonresidents reported a rating of 5.63.

### Comparison of the 2015 - 2024 cottontail and squirrel harvests

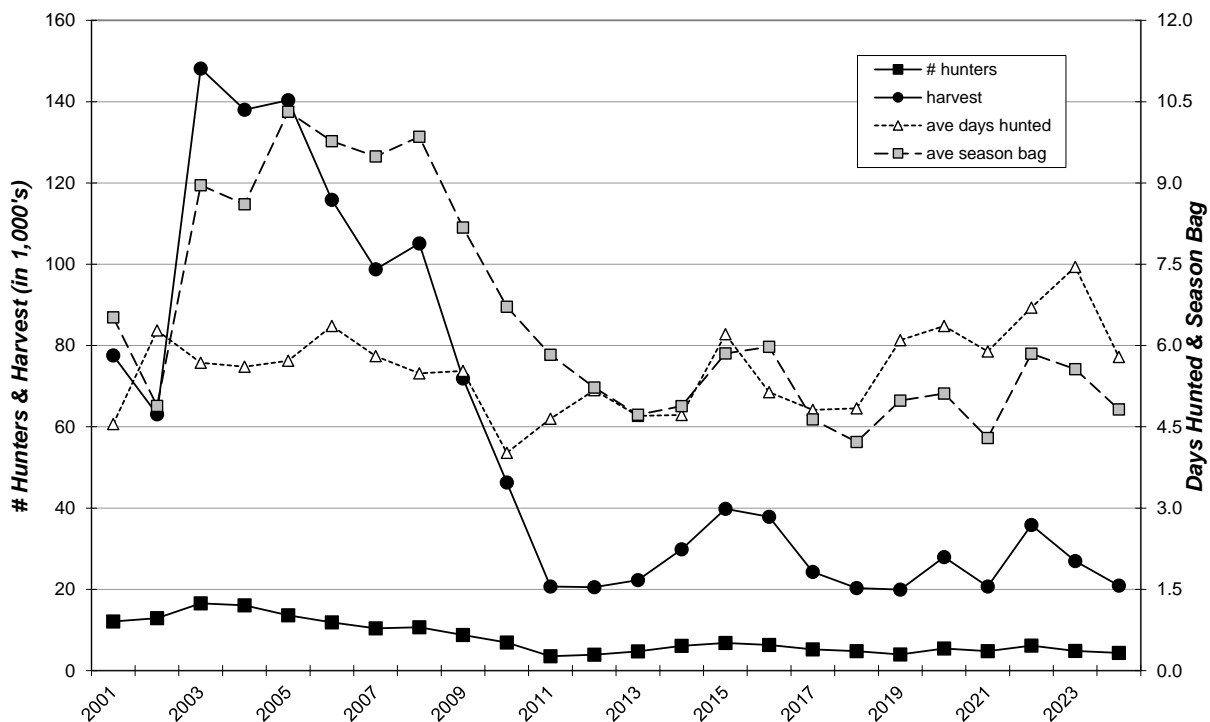
Year	<b>Cottontails</b>				<b>Squirrels</b>			
	<b>Hunters</b>		<b>Harvest</b>		<b>Hunters</b>		<b>Harvest</b>	
	<b>Resident</b>	<b>Nonres</b>	<b>Resident</b>	<b>Nonres</b>	<b>Resident</b>	<b>Nonres</b>	<b>Resident</b>	<b>Nonres</b>
2015	5,779	1,020	37,407	2,397	2,870	171	13,311	180
2016	5,584	754	35,649	2,224	2,786	181	11,614	262
2017	4,628	607	22,711	1,561	2,571	87	9,850	260
2018	4,341	475	19,386	937	2,302	141	8,241	293
2019	3,563	437	19,329	604	2,542	87	12,077	116
2020	4,871	597	27,026	928	3,174	119	12,757	239
2021	4,063	754	19,385	754	2,248	74	8,014	59
2022	5,333	796	33,910	1,943	2,466	80	9,949	48
2023	4,158	688	25,148	1,803	2,096	107	8,281	214
2024	3,767	574	19,559	1,378	1,591	148	5,173	382

South Dakota Game Report No 2025-08 - 2024 Small Game, Upland Bird & Migratory Bird Harvest Projections  
Corey Huxoll

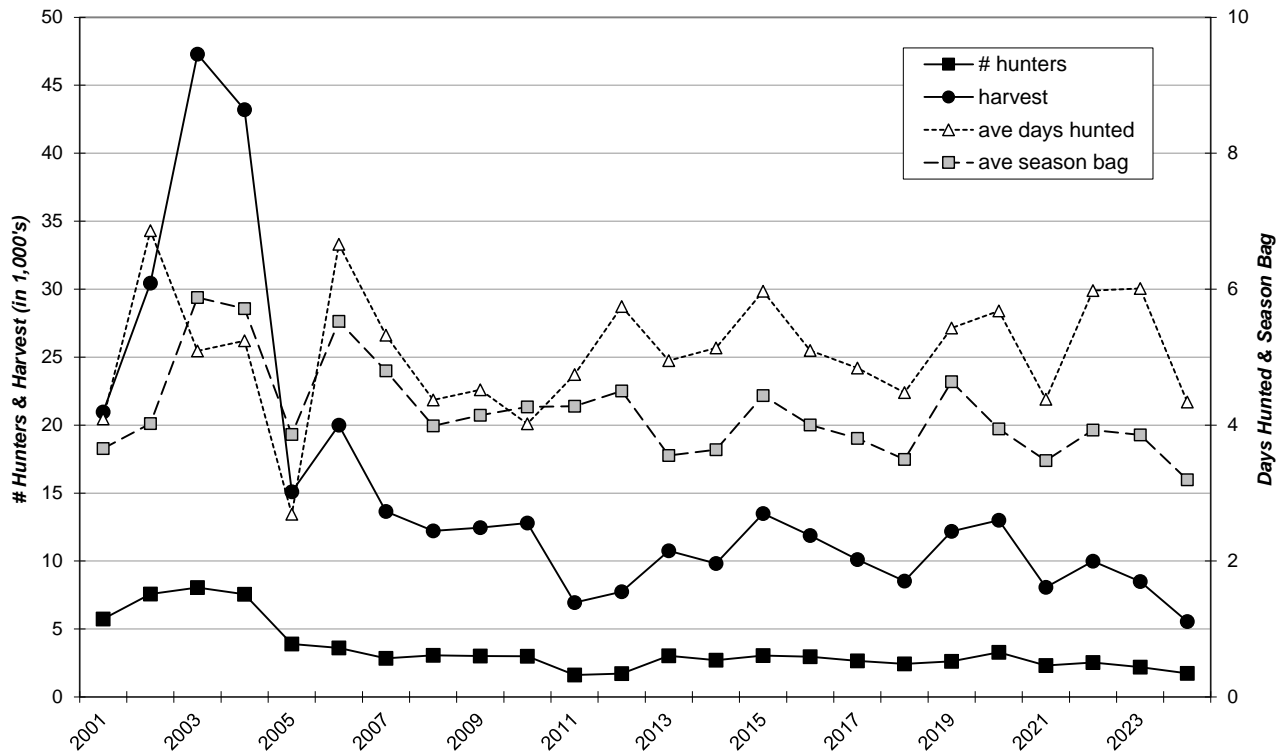
UPLAND GAME HARVEST PROJECTIONS FOR 2024								
Last Revised: 12 June 2025	RESIDENT TOTALS BY LICENSE TYPE					NONRESIDENT TOTALS		
	Comb-ination	Senior Combo	Small Game	Youth SmGm	Sum Estimates	Nonres Sm Game	Youth Sm Gm	Sum Estimates
Licenses Sold	46,248	12,124	21,676	6,318	86,366	83,991	3,484	87,475
<b>Projected ACTIVE UPLAND GAME HUNTERS</b>	<b>2,532</b>	<b>475</b>	<b>765</b>	<b>500</b>	<b>4,272</b>	<b>496</b>	<b>98</b>	<b>594</b>
Number Sampled by Survey	8,225	2,063	3,616	1,089	14,993	12,752	501	13,253
Number Responded to Survey	2,265	843	708	202	4,018	4,128	70	4,198
% Responded and Participated in Season	5%	4%	4%	8%	5%	1%	3%	1%
<b>Responded and Participated in Season</b>	<b>124</b>	<b>33</b>	<b>25</b>	<b>16</b>	<b>198</b>	<b>25</b>	<b>2</b>	<b>27</b>
Responded but DID NOT HUNT	2,141	810	683	186	3,820	4,103	68	4,171
<b>Survey Response Rate</b>	<b>27.5%</b>	<b>40.9%</b>	<b>19.6%</b>	<b>18.5%</b>	<b>26.8%</b>	<b>32.4%</b>	<b>14.0%</b>	<b>31.7%</b>
No. Hunters Reporting Cottontail Days	106	32	22	15	175	24	2	26
Sum Cottontail Hunted Days	529	314	169	70	1,082	104	8	112
<b>Average Days Hunted Cottontails</b>	<b>4.99</b>	<b>9.81</b>	<b>7.68</b>	<b>4.67</b>	<b>6.18</b>	<b>4.33</b>	<b>4.00</b>	<b>4.31</b>
Sum Cottontails Bagged	505	196	117	91	909	46	19	65
<b>Average Cottontail Bag for Season</b>	<b>4.76</b>	<b>6.13</b>	<b>5.32</b>	<b>6.07</b>	<b>5.19</b>	<b>1.92</b>	<b>4.75</b>	<b>2.50</b>
<b>Projected Days Cottontail Hunting</b>	<b>10,801</b>	<b>4,516</b>	<b>5,174</b>	<b>2,189</b>	<b>22,681</b>	<b>2,064</b>	<b>392</b>	<b>2,456</b>
<b>Projected No. Cottontail Hunters</b>	<b>2,164</b>	<b>460</b>	<b>674</b>	<b>469</b>	<b>3,767</b>	<b>476</b>	<b>98</b>	<b>574</b>
<b>Projected Cottontail Bag</b>	<b>10,311</b>	<b>2,819</b>	<b>3,582</b>	<b>2,846</b>	<b>19,559</b>	<b>913</b>	<b>465</b>	<b>1,378</b>
					<b>TOTAL COTTONTAIL HARVEST =</b>	<b>20,937</b>		
No. Hunters Reporting Squirrel Days	46	11	11	5	73	5	1	6
Sum Squirrel Hunted Days	190	99	32	26	347	13	4	17
<b>Average Days Hunted Squirrels</b>	<b>4.13</b>	<b>9.00</b>	<b>2.91</b>	<b>5.20</b>	<b>4.75</b>	<b>2.60</b>	<b>4.00</b>	<b>2.83</b>
Sum Squirrels Bagged	158	41	28	16	243	2	7	9
<b>Average Squirrel Bag for Season</b>	<b>3.43</b>	<b>3.73</b>	<b>2.55</b>	<b>3.20</b>	<b>3.33</b>	<b>0.40</b>	<b>7.00</b>	<b>1.50</b>
<b>Projected Days Squirrel Hunting</b>	<b>3,880</b>	<b>1,424</b>	<b>980</b>	<b>813</b>	<b>7,096</b>	<b>258</b>	<b>196</b>	<b>454</b>
<b>Projected No. Squirrel Hunters</b>	<b>939</b>	<b>158</b>	<b>337</b>	<b>156</b>	<b>1,591</b>	<b>99</b>	<b>49</b>	<b>148</b>
<b>Projected Squirrel Bag</b>	<b>3,226</b>	<b>590</b>	<b>857</b>	<b>500</b>	<b>5,173</b>	<b>40</b>	<b>343</b>	<b>382</b>
					<b>TOTAL SQUIRREL HARVEST =</b>	<b>5,556</b>		
<b>Mean Satisfaction Score *</b>	5.20	5.06	5.48	5.75	5.26	5.64	5.50	5.63

\* Based on scale of 1-7 with 1="very dissatisfied" and 7="very satisfied"

SOUTH DAKOTA COTTONTAIL HARVEST, 2001-2024



### SOUTH DAKOTA SQUIRREL HARVEST, 2001-2024



# PHEASANT

The 2024 pheasant season was open from 19 October 2024 – 31 January 2025 statewide. There was also a Youth season open 28 September - 6 October on public and private land and an early resident season open 12-14 October on public lands only. The daily limit was 3 cock pheasants, possession 15. To hunt pheasants, residents were required to hold small game, 1-day small game, adult or senior combination, or youth small game licenses; nonresidents were required to obtain adult or youth small game or nonresident shooting preserve licenses. Harvest surveys were sent to both resident and nonresident hunters. No shooting preserve license holders were surveyed and none of their harvest is included in the estimates below. Separate Department records showed a total harvest of 380,072 pheasants on private shooting preserves in 2024, of which 23,015 (6%) were designated as wild birds.

In 2024, there were 86,366 resident and 87,475 nonresident licenses issued that allowed holders to hunt pheasants. Approximately 15,000 residents and 13,000 nonresidents were surveyed for the upland bird seasons. Survey response rates were 27% for residents and 32% for nonresidents.

Based on survey responses indicating at least one day of hunting pheasants, there were a projected 58,195 resident and 82,067 nonresident pheasant hunters.

A projected 1,311,323 pheasants were harvested (587,346 by residents, 723,977 by nonresidents) during the 2024 seasons. When asked their satisfaction on the season, (1 being least satisfied, 7 being most satisfied), resident upland bird hunters reported an average satisfaction rating of 5.23 while nonresidents reported a satisfaction rating of 5.85.

An estimated 19,627 residents participated in the early, resident-only season. The projected harvest for this season was 25,932 birds.

The Youth season overall participation rate was approximately 4.5%; nonresidents were not surveyed on their participation. Approximately 2.4% of adult hunters reported taking one or more mentored youth hunting.

The five counties with the highest reported harvests from highest to lowest were Brown, Beadle, Brule, Spink, and Tripp.

## Comparison of the 2015 - 2024 Pheasant season statistics

Year	Resident Hunters					Nonresident Hunters				
	Number Hunters	Harvest	Ave Day Hunted	Ave Bag	Satisfaction	Number Hunters	Harvest	Ave Day Hunted	Ave Bag	Satisfaction
2015	65,135	517,942	6.17	8.06	4.98	84,901	737,936	4.15	8.71	5.49
2016	61,746	478,099	6.24	7.86	4.72	81,141	692,497	4.14	8.57	5.43
2017	52,538	326,936	6.08	6.30	4.23	67,232	501,773	3.96	7.47	5.06
2018	53,577	392,020	6.26	7.38	4.64	69,018	558,863	4.06	8.11	5.38
2019	47,403	354,742	6.17	7.48	4.67	63,801	474,754	4.04	7.44	5.28
2020	59,042	518,288	8.09	9.28	5.06	62,289	560,618	4.47	9.00	5.75
2021	54,411	473,728	7.62	8.71	4.75	75,606	593,695	4.30	7.85	5.38
2022	53,846	510,957	7.75	9.49	5.09	73,887	647,759	4.25	8.77	5.85
2023	56,457	572,159	8.05	10.13	5.03	77,004	671,036	4.43	8.71	5.72
2024	58,195	587,346	8.12	10.09	5.23	82,067	723,977	4.42	8.82	5.85

South Dakota Game Report No 2025-08 - 2024 Small Game, Upland Bird & Migratory Bird Harvest Projections  
 Corey Huxoll

<b><u>PHEASANT HARVEST PROJECTIONS FOR 2024</u></b>						<b><u>NONRESIDENT TOTALS</u></b>		
Revised: 3/6/2025	<b><u>RESIDENT TOTALS BY LICENSE TYPE</u></b>							
	Combo	Senior Combo	Small Game	Youth SmGm	Sum Estimates	Nonres Sm Game	Youth Sm Game	Sum Estimates
<b>Licenses Sold</b>	46,248	12,124	21,676	6,318	<b>86,366</b>	83,991	3,484	<b>87,475</b>
<b>Projected ACTIVE UPLAND BIRD HUNTERS</b>	<b>30,546</b>	<b>7,119</b>	<b>16,992</b>	<b>4,785</b>	<b>59,442</b>	<b>79,780</b>	<b>3,279</b>	<b>83,059</b>
Number Sampled by Survey	8,225	2,063	3,616	1,089	<b>14,993</b>	12,752	501	<b>13,253</b>
Number Responded to Survey	2,265	843	708	202	<b>4,018</b>	4,128	70	<b>4,198</b>
% Responded and Participated in Season	66%	59%	78%	76%	67%	97%	96%	97%
Responded and Participated in Season	1,496	495	555	153	<b>2,699</b>	4,019	67	<b>4,086</b>
Responded but DID NOT HUNT	769	348	153	49	<b>1,319</b>	109	3	<b>112</b>
<b>Survey Response Rate</b>	<b>27.5%</b>	<b>40.9%</b>	<b>19.6%</b>	<b>18.5%</b>	<b>26.8%</b>	<b>32.4%</b>	<b>14.0%</b>	<b>31.7%</b>
No. Hunters Reporting Pheasant Days	1,463	485	543	151	<b>2,642</b>	3,969	67	<b>4,036</b>
Sum Pheasant Hunted Days	11,690	4,684	4,390	1,029	<b>21,793</b>	17,646	258	<b>17,904</b>
<b>Average Days Hunted Pheasants</b>	<b>7.99</b>	<b>9.66</b>	<b>8.08</b>	<b>6.81</b>	<b>8.12</b>	<b>4.45</b>	<b>3.85</b>	<b>4.42</b>
Sum Pheasants Bagged	15,582	5,964	4,822	1,144	<b>27,512</b>	35,502	393	<b>35,895</b>
<b>Average Pheasant Bag for Season</b>	<b>10.65</b>	<b>12.30</b>	<b>8.88</b>	<b>7.58</b>	<b>10.09</b>	<b>8.94</b>	<b>5.87</b>	<b>8.82</b>
<b>Projected Days Pheasant Hunting</b>	<b>238,693</b>	<b>67,365</b>	<b>134,403</b>	<b>32,184</b>	<b>472,646</b>	<b>350,287</b>	<b>12,627</b>	<b>362,914</b>
<b>Projected No. Pheasant Hunters</b>	<b>29,872</b>	<b>6,975</b>	<b>16,624</b>	<b>4,723</b>	<b>58,195</b>	<b>78,788</b>	<b>3,279</b>	<b>82,067</b>
<b>Projected Pheasant Bag</b>	<b>318,162</b>	<b>85,774</b>	<b>147,629</b>	<b>35,781</b>	<b>587,346</b>	<b>704,742</b>	<b>19,235</b>	<b>723,977</b>
LCI (95%)	294,245	73,361	127,717	25,613	551,961	688,122	14,813	706,802
UCI (95%)	342,375	98,588	167,864	46,254	622,618	721,359	23,720	741,164
<b>TOTAL PHEASANT HARVEST =</b>						<b>1,311,323</b>		
LCI (95%) =						<b>1,272,028</b>		
UCI (95%) =						<b>1,350,711</b>		
<b><u>RESIDENT-ONLY OPENING WEEKEND:</u></b>								
No. Hunters Reporting Pheasant Days	471	172	191	54	<b>888</b>	-	-	-
Sum Pheasant Hunted Days	322	101	121	39	<b>583</b>	-	-	-
<b>Average Days Hunted Pheasants</b>	<b>0.68</b>	<b>0.59</b>	<b>0.63</b>	<b>0.72</b>	<b>0.66</b>	-	-	-
Sum Pheasants Bagged	678	239	209	72	<b>1,198</b>	-	-	-
<b>Average Pheasant Bag for Weekend</b>	<b>1.44</b>	<b>1.39</b>	<b>1.09</b>	<b>1.33</b>	<b>1.32</b>	-	-	-
<b>Projected Days Pheasant Hunting</b>	<b>6,575</b>	<b>1,453</b>	<b>3,705</b>	<b>1,220</b>	<b>12,952</b>	-	-	-
<b>Projected No. Pheasant Hunters</b>	<b>9,617</b>	<b>2,474</b>	<b>5,848</b>	<b>1,689</b>	<b>19,627</b>	-	-	-
<b>Projected Pheasant Bag</b>	<b>13,844</b>	<b>3,437</b>	<b>6,399</b>	<b>2,252</b>	<b>25,932</b>	-	-	-
<b>RESIDENT-ONLY WEEKEND PHEASANT HARVEST =</b>						<b>25,932</b>		
<b><u>YOUTH SEASON PARTICIPATION:</u></b>								
No. Hunters Reporting Participation	101	37	35	33	<b>173</b>	-	-	-
<b>Projected No. Hunters Participating</b>	<b>2,062</b>	<b>532</b>	<b>1,072</b>	<b>1,032</b>	<b>3,666</b>	-	-	-
<b>Percent Hunters Participating</b>	<b>4.5%</b>	<b>4.4%</b>	<b>4.9%</b>	<b>16.3%</b>	<b>4.5%</b>	-	-	-
<b><u>MENTORED YOUTH PARTICIPATION:</u></b>								
No. Hunters Reporting Participation	62	19	14	NA	<b>95</b>	-	-	-
<b>Projected No. Hunters Participating</b>	<b>1,266</b>	<b>27</b>	<b>56</b>		<b>1,349</b>	-	-	-
<b>Percent Hunters Participating</b>	<b>2.7%</b>	<b>2.3%</b>	<b>2.0%</b>		<b>2.4%</b>	-	-	-
<b>Upland Bird Hunters Mean Satisfaction Score *</b>	<b>5.27</b>	<b>5.13</b>	<b>5.29</b>	<b>5.09</b>	<b>5.23</b>	<b>5.85</b>	<b>5.91</b>	<b>5.85</b>

\* Based on scale of 1-7 with 1="very dissatisfied" and 7="very satisfied"

<b>RESIDENT-ONLY WEEKEND 2024 PHEASANT SEASON PARTICIPATION AND BAG</b>				
Last Revised: 12 March 2025				
	# Days Hunted	# Responded	% of Total	Ave. Bag
<b>Residents</b>	0	3,435	85.5%	
	1	348	8.7%	1.27
	2	165	4.1%	2.80
	3	70	1.7%	4.21

South Dakota Game Report No 2025-08 - 2024 Small Game, Upland Bird & Migratory Bird Harvest Projections  
 Corey Huxoll

<b>Total Pheasant Harvest Distribution by County 2024</b>							
<b>COUNTY</b>	<b>HUNTER DISTRIBUTION</b>			<b>HARVEST DISTRIBUTION</b>			<b>Birds/Hunter **</b>
	<b># Projected</b>	<b>% of Total</b>	<b># Proj w/ Unk *</b>	<b># Projected</b>	<b>% of Total</b>	<b># Proj w/ Unk *</b>	
Minnehaha	1,893	1.4	1,934	10,573	0.8	10,793	5.6
Pennington	393	0.3	401	2,249	0.2	2,288	5.7
Brown	7,808	5.8	8,170	81,850	6.4	84,495	10.5
Beadle	6,654	4.9	6,953	62,716	4.9	64,908	9.4
Codington	2,594	1.9	2,673	19,608	1.5	20,052	7.6
Brookings	3,211	2.4	3,312	27,108	2.1	27,806	8.4
Yankton	1,423	1.1	1,475	8,201	0.6	8,441	5.8
Davison	3,030	2.3	3,181	26,469	2.1	27,465	8.7
Lawrence	61	0.0	65	343	0.0	360	5.6
Aurora	4,448	3.3	4,653	48,621	3.8	50,262	10.9
Bennett	925	0.7	964	6,741	0.5	6,991	7.3
Bon Homme	1,105	0.8	1,132	7,581	0.6	7,748	6.9
Brule	6,183	4.6	6,493	58,715	4.6	60,973	9.5
Buffalo	456	0.3	479	4,554	0.4	4,741	10.0
Butte	63	0.0	66	248	0.0	256	4.0
Campbell	1,681	1.2	1,765	18,576	1.5	19,280	11.1
Charles Mix	3,853	2.9	4,025	36,800	2.9	38,004	9.6
Clark	3,262	2.4	3,397	26,068	2.1	26,992	8.0
Clay	712	0.5	731	6,390	0.5	6,512	9.0
Corson	751	0.6	786	8,260	0.7	8,568	11.0
Custer	232	0.2	241	1,142	0.1	1,190	4.9
Day	2,699	2.0	2,821	22,719	1.8	23,454	8.4
Deuel	1,096	0.8	1,128	7,373	0.6	7,560	6.7
Dewey	934	0.7	980	8,407	0.7	8,731	9.0
Douglas	1,623	1.2	1,689	15,120	1.2	15,634	9.3
Edmunds	3,453	2.6	3,608	43,355	3.4	44,765	12.6
Fall River	571	0.4	581	3,519	0.3	3,583	6.2
Faulk	3,889	2.9	4,078	43,618	3.4	45,258	11.2
Grant	535	0.4	552	3,217	0.3	3,304	6.0
Gregory	3,072	2.3	3,238	27,697	2.2	28,922	9.0
Haakon	517	0.4	531	3,303	0.3	3,378	6.4
Hamlin	1,986	1.5	2,039	15,561	1.2	15,892	7.8
Hand	3,097	2.3	3,236	27,226	2.1	28,176	8.8
Hanson	1,666	1.2	1,720	12,093	1.0	12,447	7.3
Harding	632	0.5	658	5,232	0.4	5,419	8.3
Hughes	4,092	3.0	4,256	37,928	3.0	39,073	9.3
Hutchinson	2,221	1.7	2,319	20,628	1.6	21,333	9.3
Hyde	1,244	0.9	1,294	10,784	0.8	11,149	8.7
Jackson	230	0.2	241	1,173	0.1	1,216	5.1
Jerauld	1,786	1.3	1,862	16,775	1.3	17,330	9.4
Jones	1,159	0.9	1,219	10,596	0.8	11,021	9.1
Kingsbury	2,684	2.0	2,789	28,847	2.3	29,730	10.7
Lake	1,730	1.3	1,774	17,379	1.4	17,721	10.0
Lincoln	1,218	0.9	1,245	7,573	0.6	7,707	6.2
Lyman	5,190	3.9	5,461	49,108	3.9	51,015	9.5
McCook	2,206	1.6	2,262	26,034	2.1	26,541	11.8
McPherson	2,150	1.6	2,262	19,898	1.6	20,750	9.3
Marshall	1,005	0.7	1,050	6,089	0.5	6,312	6.1
Meade	356	0.3	372	2,234	0.2	2,308	6.3
Mellette	441	0.3	460	2,650	0.2	2,736	6.0
Miner	3,069	2.3	3,186	37,719	3.0	38,768	12.3
Moody	734	0.5	753	4,163	0.3	4,272	5.7
Perkins	2,345	1.7	2,425	21,733	1.7	22,302	9.3
Potter	2,672	2.0	2,796	31,141	2.5	32,268	11.7
Roberts	859	0.6	884	6,498	0.5	6,634	7.6
Sanborn	2,084	1.5	2,170	20,488	1.6	21,173	9.8
Spink	5,049	3.8	5,298	52,311	4.1	54,364	10.4
Stanley	1,289	1.0	1,340	13,842	1.1	14,208	10.7
Sully	2,615	1.9	2,720	33,252	2.6	34,153	12.7
Tripp	5,036	3.7	5,292	49,523	3.9	51,468	9.8
Turner	891	0.7	911	4,597	0.4	4,695	5.2
Union	786	0.6	802	6,890	0.5	7,014	8.8
Walworth	2,362	1.8	2,470	21,719	1.7	22,528	9.2
Ziebach	344	0.3	354	4,812	0.4	4,925	14.0
Oglala Lakota	83	0.1	87	470	0.0	489	5.7
Todd	146	0.1	153	1,427	0.1	1,474	9.8
Unk/Unreported	5,678	-	-	41,788	-	-	7.4
<b>TOTALS:</b>	<b>140,262</b>	<b>100%</b>	<b>140,262</b>	<b>1,311,323</b>	<b>100%</b>	<b>1,311,323</b>	<b>9.35</b>

Last Revised: 7 March 2025  
 \* Includes unknown county projection values by assuming unknown county values are distributed the same as reported county values. Total values may be different due to rounding.  
 \*\* Calculation uses "# projected" values without correction for unknown/unreported county values.

South Dakota Game Report No 2025-08 - 2024 Small Game, Upland Bird & Migratory Bird Harvest Projections  
Cory Huxoll

<b>Resident Pheasant Harvest Distribution by County 2024</b>									
COUNTY	HUNTER DISTRIBUTION				HARVEST DISTRIBUTION				Birds/Hunter **
	# Reported	# Projected	% of Total	# Proj w/ Unk *	# Reported	# Projected	% of Total	# Proj w/ Unk *	
Minnehaha	73	1,608	2.8	1,632	397	8,475	1.5	8,592	5.3
Pennington	16	352	0.6	358	94	2,007	0.3	2,034	5.7
Brown	120	2,643	4.6	2,683	1,815	38,748	6.7	39,282	14.7
Beadle	111	2,445	4.3	2,482	1,171	24,999	4.3	25,344	10.2
Codington	79	1,740	3.0	1,766	687	14,667	2.5	14,869	8.4
Brookings	95	2,093	3.6	2,124	838	17,890	3.1	18,137	8.5
Yankton	36	793	1.4	805	216	4,611	0.8	4,675	5.8
Davison	36	793	1.4	805	399	8,518	1.5	8,636	10.7
Lawrence	0	0	0.0	0	0	0	0.0	0	0
Aurora	69	1,520	2.7	1,543	986	21,050	3.6	21,340	13.8
Bennett	18	396	0.7	402	106	2,263	0.4	2,294	5.7
Bon Homme	40	881	1.5	894	271	5,786	1.0	5,865	6.6
Brule	73	1,608	2.8	1,632	823	17,570	3.0	17,812	10.9
Buffalo	5	110	0.2	112	48	1,025	0.2	1,039	9.3
Butte	1	22	0.0	22	5	107	0.0	108	4.8
Campbell	20	441	0.8	447	274	5,850	1.0	5,930	13.3
Charles Mix	66	1,454	2.5	1,476	796	16,994	2.9	17,228	11.7
Clark	65	1,432	2.5	1,453	470	10,034	1.7	10,172	7.0
Clay	24	529	0.9	537	253	5,401	0.9	5,476	10.2
Corson	11	242	0.4	246	129	2,754	0.5	2,792	11.4
Custer	5	110	0.2	112	11	235	0.0	238	2.1
Day	45	991	1.7	1,006	503	10,738	1.9	10,886	10.8
Deuel	35	771	1.3	782	232	4,953	0.9	5,021	6.4
Dewey	11	242	0.4	246	117	2,498	0.4	2,532	10.3
Douglas	34	749	1.3	760	302	6,447	1.1	6,536	8.6
Edmunds	58	1,278	2.2	1,297	950	20,281	3.5	20,561	15.9
Fall River	25	551	1.0	559	145	3,096	0.5	3,138	5.6
Faulk	51	1,123	2.0	1,140	660	14,090	2.4	14,284	12.5
Grant	16	352	0.6	358	94	2,007	0.3	2,034	5.7
Gregory	25	551	1.0	559	175	3,736	0.6	3,788	6.8
Haakon	17	374	0.7	380	116	2,476	0.4	2,511	6.6
Hamlin	68	1,498	2.6	1,520	573	12,233	2.1	12,401	8.2
Hand	52	1,145	2.0	1,163	511	10,909	1.9	11,060	9.5
Hanson	47	1,035	1.8	1,051	318	6,789	1.2	6,882	6.6
Harding	13	286	0.5	291	92	1,964	0.3	1,991	6.9
Hughes	87	1,916	3.3	1,945	949	20,260	3.5	20,539	10.6
Hutchinson	39	859	1.5	872	406	8,668	1.5	8,787	10.1
Hyde	26	573	1.0	581	217	4,633	0.8	4,697	8.1
Jackson	4	88	0.2	89	20	427	0.1	433	4.8
Jerauld	34	749	1.3	760	354	7,557	1.3	7,662	10.1
Jones	12	264	0.5	268	126	2,690	0.5	2,727	10.2
Kingsbury	60	1,322	2.3	1,341	705	15,051	2.6	15,258	11.4
Lake	61	1,344	2.3	1,364	678	14,474	2.5	14,674	10.8
Lincoln	47	1,035	1.8	1,051	316	6,746	1.2	6,839	6.5
Lyman	51	1,123	2.0	1,140	663	14,154	2.4	14,349	12.6
McCook	78	1,718	3.0	1,744	1,022	21,818	3.8	22,119	12.7
McPherson	21	463	0.8	469	163	3,480	0.6	3,528	7.5
Marshall	17	374	0.7	380	101	2,156	0.4	2,186	5.8
Meade	6	132	0.2	134	47	1,003	0.2	1,017	7.6
Mellette	8	176	0.3	179	58	1,238	0.2	1,255	7.0
Miner	71	1,564	2.7	1,587	1,062	22,672	3.9	22,985	14.5
Moody	25	551	1.0	559	127	2,711	0.5	2,749	4.9
Perkins	64	1,410	2.5	1,431	659	14,069	2.4	14,263	10.0
Potter	41	903	1.6	917	530	11,315	2.0	11,471	12.5
Roberts	27	595	1.0	604	242	5,166	0.9	5,238	8.7
Sanborn	42	925	1.6	939	424	9,052	1.6	9,177	9.8
Spink	64	1,410	2.5	1,431	677	14,453	2.5	14,652	10.3
Stanley	29	639	1.1	648	415	8,860	1.5	8,982	13.9
Sully	55	1,211	2.1	1,230	969	20,687	3.6	20,972	17.1
Tripp	56	1,234	2.2	1,252	639	13,642	2.4	13,830	11.1
Turner	34	749	1.3	760	170	3,629	0.6	3,679	4.8
Union	32	705	1.2	715	284	6,063	1.0	6,147	8.6
Walworth	38	837	1.5	850	339	7,237	1.2	7,337	8.6
Ziebach	11	242	0.4	246	164	3,501	0.6	3,549	14.5
Oglala Lakota	1	22	0.0	22	5	107	0.0	108	4.8
Todd	2	44	0.1	45	30	640	0.1	649	14.5
Unk/Unreported	39	859	-	-	374	7,984	-	-	9.3
<b>TOTALS:</b>	<b>2,642</b>	<b>58,195</b>	<b>100%</b>	<b>58,195</b>	<b>27,512</b>	<b>587,346</b>	<b>100%</b>	<b>587,346</b>	<b>10.09</b>

Last Revised: 7 March 2025

\* Includes unknown county projection values by assuming unknown county values are distributed the same as reported county values. Total values may be different due to rounding.

\*\* Calculation uses "# projected" values without correction for unknown/unreported county values.

South Dakota Game Report No 2025-08 - 2024 Small Game, Upland Bird & Migratory Bird Harvest Projections  
 Corey Huxoll

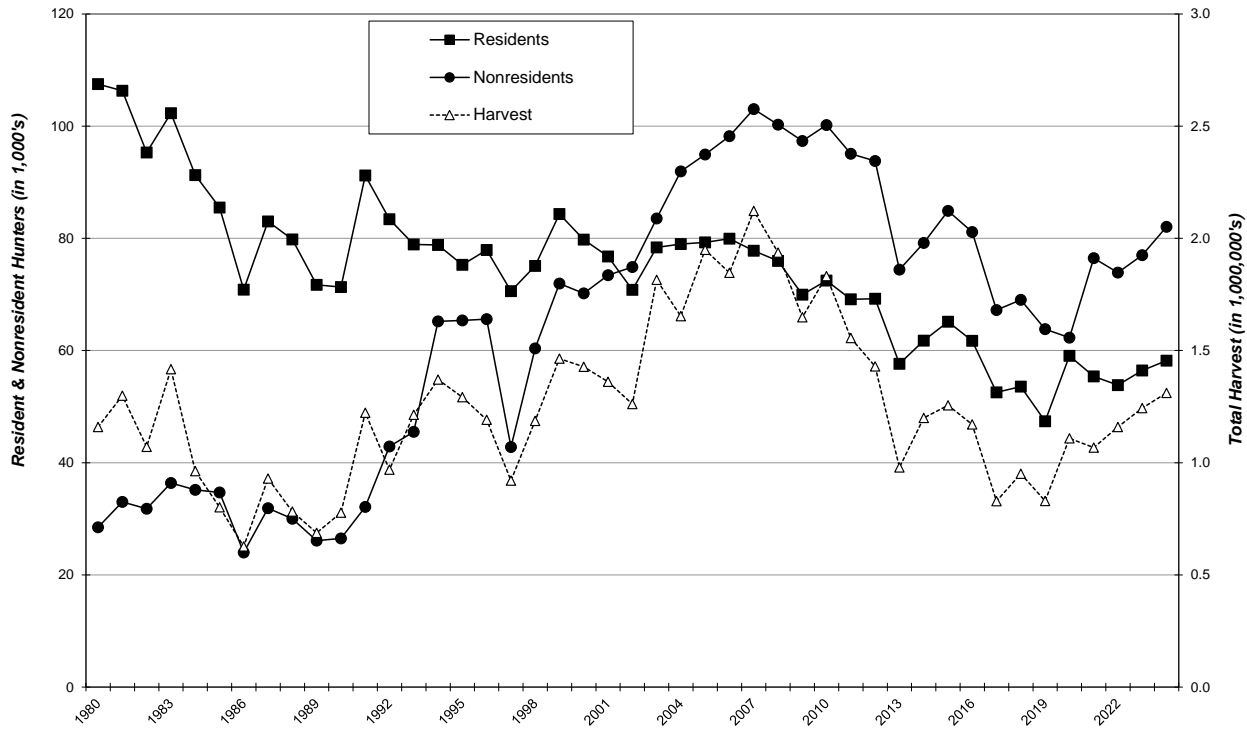
<b>Nonresident Pheasant Harvest Distribution by County 2024</b>										
<b>COUNTY</b>	<b>HUNTER DISTRIBUTION</b>				<b>HARVEST DISTRIBUTION</b>				<b>Birds/Hunter **</b>	
	<b># Reported</b>	<b># Projected</b>	<b>% of Total</b>	<b># Proj w/ Unk *</b>	<b># Reported</b>	<b># Projected</b>	<b>% of Total</b>	<b># Proj w/ Unk *</b>		
Minnehaha	14	285	0.4	302	104	2,098	0.3	2,200	7.4	
Pennington	2	41	0.1	43	12	242	0.0	254	6.0	
Brown	254	5,165	6.7	5,487	2,137	43,102	6.2	45,213	8.3	
Beadle	207	4,209	5.4	4,472	1,870	37,717	5.5	39,564	9.0	
Codington	42	854	1.1	907	245	4,941	0.7	5,184	5.8	
Brookings	55	1,118	1.4	1,188	457	9,217	1.3	9,669	8.2	
Yankton	31	630	0.8	670	178	3,590	0.5	3,766	5.7	
Davison	110	2,237	2.9	2,376	890	17,951	2.6	18,830	8.0	
Lawrence	3	61	0.1	65	17	343	0.0	360	5.6	
Aurora	144	2,928	3.8	3,111	1,367	27,571	4.0	28,922	9.4	
Bennett	26	529	0.7	562	222	4,478	0.6	4,697	8.5	
Bon Homme	11	224	0.3	238	89	1,795	0.3	1,883	8.0	
Brule	225	4,575	5.9	4,861	2,040	41,145	6.0	43,161	9.0	
Buffalo	17	346	0.4	367	175	3,530	0.5	3,703	10.2	
Butte	2	41	0.1	43	7	141	0.0	148	3.5	
Campbell	61	1,240	1.6	1,318	631	12,727	1.8	13,350	10.3	
Charles Mix	118	2,399	3.1	2,549	982	19,806	2.9	20,776	8.3	
Clark	90	1,830	2.4	1,944	795	16,035	2.3	16,820	8.8	
Clay	9	183	0.2	194	49	988	0.1	1,037	5.4	
Corson	25	508	0.7	540	273	5,506	0.8	5,776	10.8	
Custer	6	122	0.2	130	45	908	0.1	952	7.4	
Day	84	1,708	2.2	1,815	594	11,981	1.7	12,567	7.0	
Deuel	16	325	0.4	346	120	2,420	0.4	2,539	7.4	
Dewey	34	691	0.9	734	293	5,910	0.9	6,199	8.5	
Douglas	43	874	1.1	929	430	8,673	1.3	9,098	9.9	
Edmunds	107	2,176	2.8	2,311	1,144	23,074	3.3	24,204	10.6	
Fall River	1	20	0.0	22	21	424	0.1	444	20.8	
Faulk	136	2,765	3.6	2,938	1,464	29,528	4.3	30,974	10.7	
Grant	9	183	0.2	194	60	1,210	0.2	1,269	6.6	
Gregory	124	2,521	3.3	2,679	1,188	23,961	3.5	25,135	9.5	
Haakon	7	142	0.2	151	41	827	0.1	867	5.8	
Hamlin	24	488	0.6	518	165	3,328	0.5	3,491	6.8	
Hand	96	1,952	2.5	2,074	809	16,317	2.4	17,116	8.4	
Hanson	31	630	0.8	670	263	5,305	0.8	5,564	8.4	
Harding	17	346	0.4	367	162	3,267	0.5	3,427	9.5	
Hughes	107	2,176	2.8	2,311	876	17,668	2.6	18,534	8.1	
Hutchinson	67	1,362	1.8	1,447	593	11,960	1.7	12,546	8.8	
Hyde	33	671	0.9	713	305	6,152	0.9	6,453	9.2	
Jackson	7	142	0.2	151	37	746	0.1	783	5.2	
Jerauld	51	1,037	1.3	1,102	457	9,217	1.3	9,669	8.9	
Jones	44	895	1.2	950	392	7,906	1.1	8,294	8.8	
Kingsbury	67	1,362	1.8	1,447	684	13,796	2.0	14,471	10.1	
Lake	19	386	0.5	410	144	2,904	0.4	3,047	7.5	
Lincoln	9	183	0.2	194	41	827	0.1	867	4.5	
Lyman	200	4,067	5.3	4,320	1,733	34,953	5.1	36,665	8.6	
McCook	24	488	0.6	518	209	4,215	0.6	4,422	8.6	
McPherson	83	1,688	2.2	1,793	814	16,418	2.4	17,222	9.7	
Marshall	31	630	0.8	670	195	3,933	0.6	4,126	6.2	
Meade	11	224	0.3	238	61	1,230	0.2	1,291	5.5	
Mellette	13	264	0.3	281	70	1,412	0.2	1,481	5.3	
Miner	74	1,505	1.9	1,599	746	15,046	2.2	15,783	10.0	
Moody	9	183	0.2	194	72	1,452	0.2	1,523	7.9	
Perkins	46	935	1.2	994	380	7,664	1.1	8,040	8.2	
Potter	87	1,769	2.3	1,879	983	19,826	2.9	20,797	11.2	
Roberts	13	264	0.3	281	66	1,331	0.2	1,396	5.0	
Sanborn	57	1,159	1.5	1,231	567	11,436	1.7	11,996	9.9	
Spink	179	3,640	4.7	3,867	1,877	37,858	5.5	39,712	10.4	
Stanley	32	651	0.8	691	247	4,982	0.7	5,226	7.7	
Sully	69	1,403	1.8	1,491	623	12,565	1.8	13,181	9.0	
Tripp	187	3,802	4.9	4,040	1,779	35,881	5.2	37,639	9.4	
Turner	7	142	0.2	151	48	968	0.1	1,016	6.8	
Union	4	81	0.1	86	41	827	0.1	867	10.2	
Walworth	75	1,525	2.0	1,620	718	14,482	2.1	15,191	9.5	
Ziebach	5	102	0.1	108	65	1,311	0.2	1,375	12.9	
Oglala Lakota	3	61	0.1	65	18	363	0.1	381	6.0	
Todd	5	102	0.1	108	39	787	0.1	825	7.7	
Unk/Unreported	237	4,819	-	-	1,676	33,804	-	-	7.0	
<b>TOTALS</b>	<b>4,036</b>	<b>82,067</b>	<b>100%</b>	<b>82,067</b>	<b>35,895</b>	<b>723,977</b>	<b>100%</b>	<b>723,977</b>	<b>8.82</b>	

Last Revised: 7 March 2025

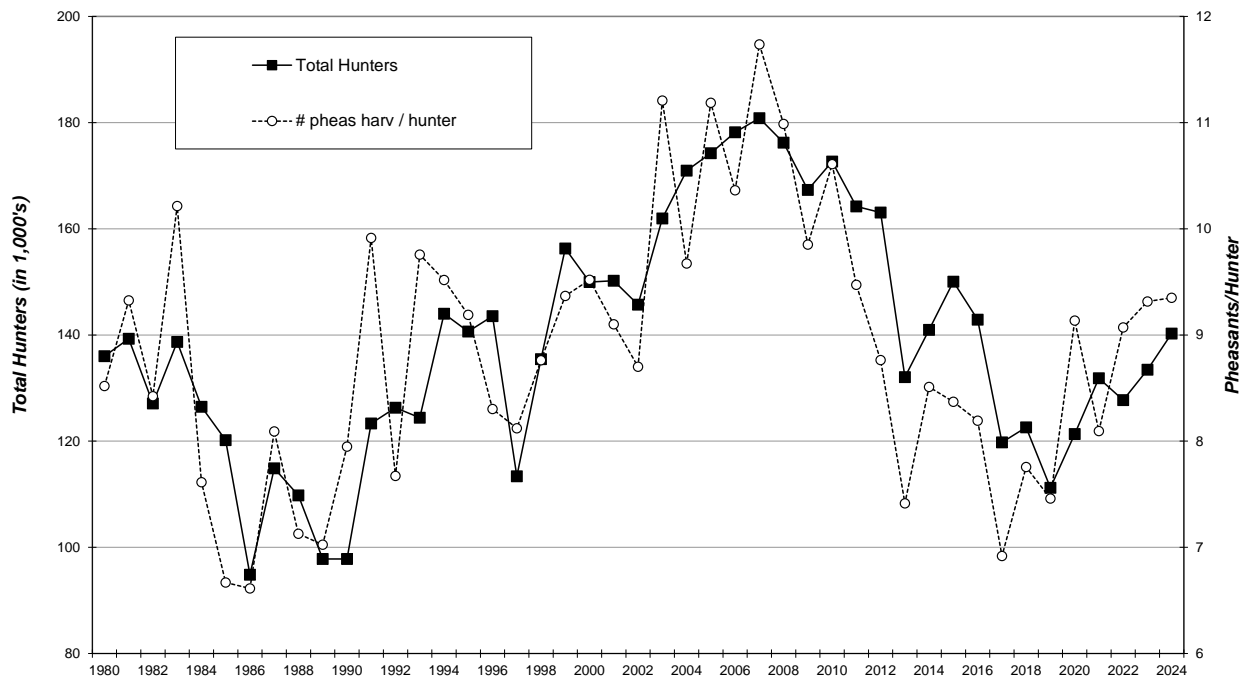
\* Includes unknown county projection values by assuming unknown county values are distributed the same as reported county values. Total values may be different due to rounding.

\*\* Calculation uses "# projected" values without correction for unknown/unreported county values.

### SOUTH DAKOTA PHEASANT HARVEST 1980-2024

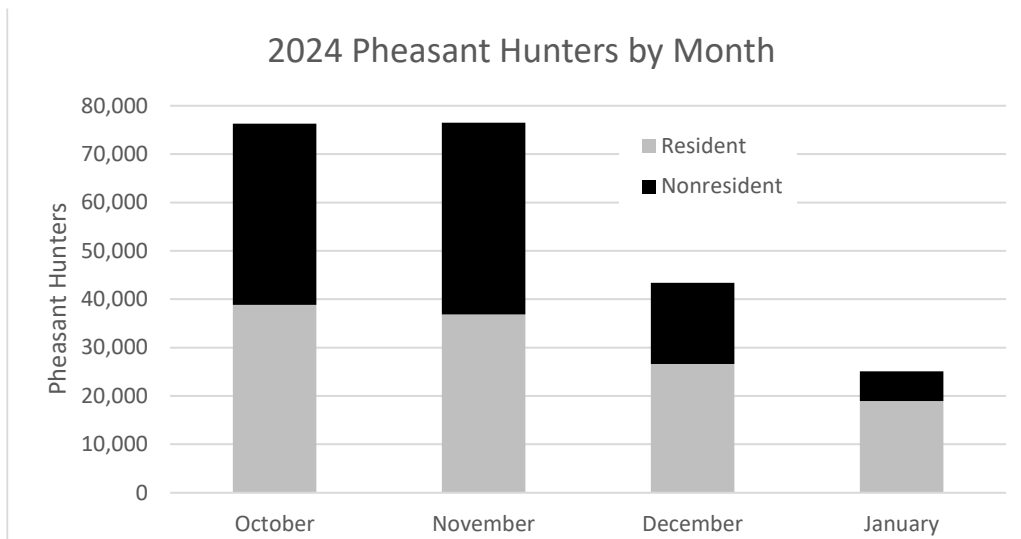
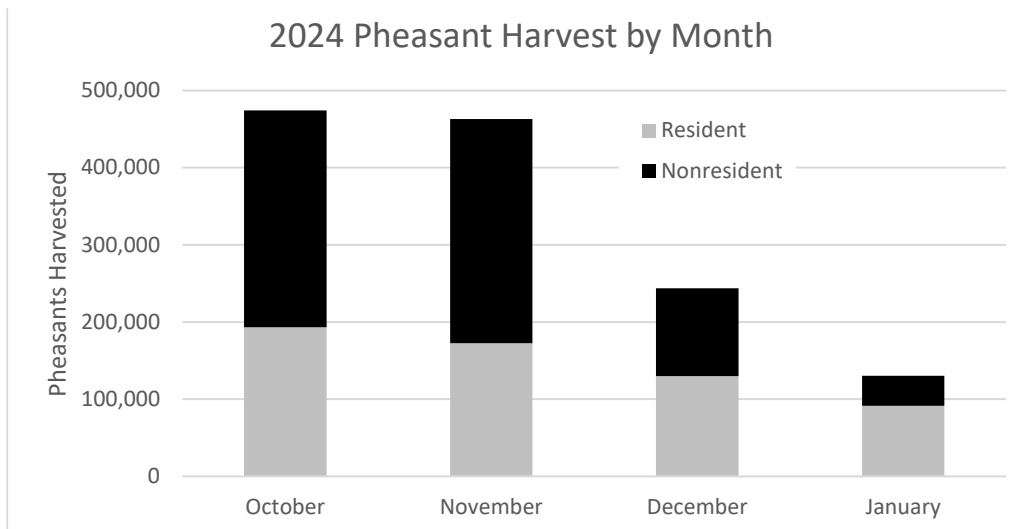


### SOUTH DAKOTA PHEASANT HUNTERS AND AVERAGE SEASON HARVEST 1980-2024

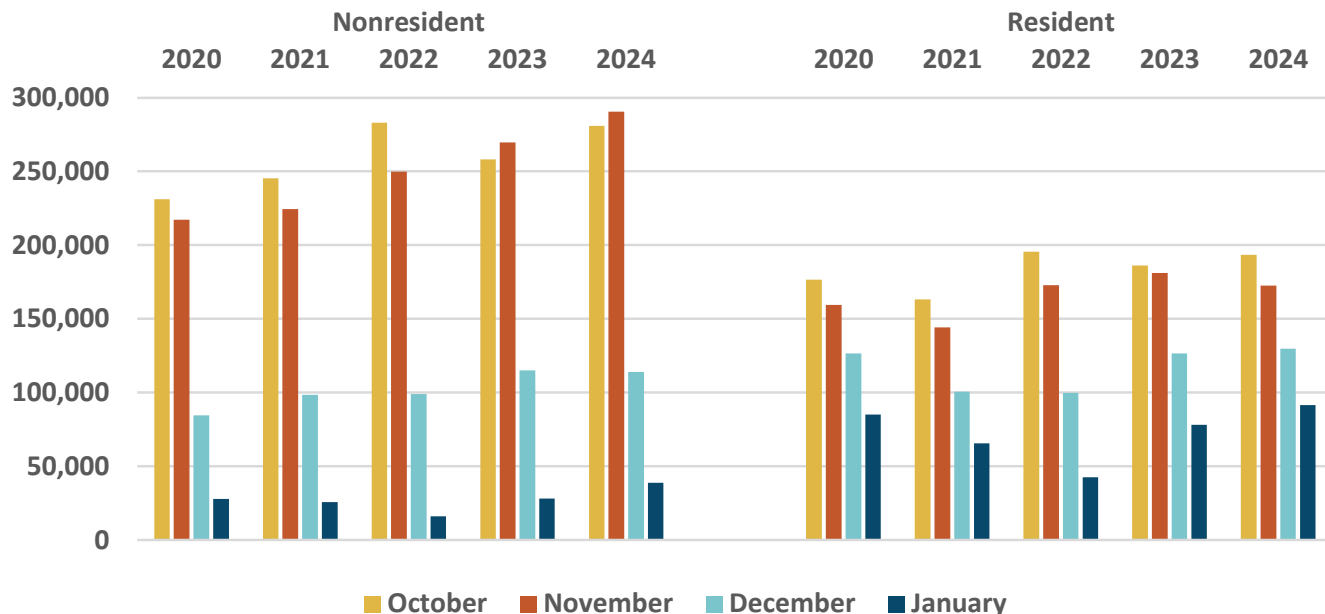


**South Dakota Game Report No 2025-08 - 2024 Small Game, Upland Bird & Migratory Bird Harvest Projections**  
 Corey Huxoll

<b>2024 ESTIMATES OF PHEASANT HUNTING BY MONTH</b>						<b>NONRESIDENT TOTALS</b>		
<i>Revised: 3/12/2025</i>	<b>RESIDENT TOTALS BY LICENSE TYPE</b>							
	Combo	Senior Combo	Small Game	Youth Sm Game	Sum Estimates	Nonres Sm Game	Youth Sm Game	Sum Estimates
<b>Projected Days Pheasant Hunting</b>	238,693	67,365	134,403	32,184	472,646	350,287	12,627	362,914
<b>Projected No. Pheasant Hunters</b>	29,872	6,975	16,624	4,723	58,195	78,788	3,279	82,067
<b>Projected Pheasant Bag</b>	318,162	85,774	147,629	35,781	587,346	704,742	19,235	723,977
<b>TOTAL PHEASANT HARVEST =</b>						<b>1,311,323</b>		
Percent Reporting Pheasant Days October	65%	73%	66%	72%		46%	42%	
Percent Reporting Pheasant Days November	62%	65%	65%	65%		48%	46%	
Percent Reporting Pheasant Days December	49%	43%	43%	36%		20%	19%	
Percent Reporting Pheasant Days January	37%	32%	27%	26%		7%	7%	
Projected Pheasant Hunters October	19,418	5,120	10,899	3,409	<b>38,846</b>	36,089	1,370	<b>37,459</b>
Projected Pheasant Hunters November	18,377	4,545	10,838	3,065	<b>36,825</b>	38,153	1,517	<b>39,670</b>
Projected Pheasant Hunters December	14,763	3,020	7,133	1,689	<b>26,605</b>	16,139	636	<b>16,775</b>
Projected Pheasant Hunters January	11,006	2,258	4,470	1,220	<b>18,953</b>	5,896	245	<b>6,140</b>
Percent Pheasant Harvest October	31%	34%	34%	42%		39%	43%	
Percent Pheasant Harvest November	27%	32%	32%	30%		40%	37%	
Percent Pheasant Harvest December	24%	20%	20%	16%		16%	16%	
Percent Pheasant Harvest January	18%	14%	13%	12%		5%	4%	
Projected Pheasant Harvest October	98,274	29,086	50,888	15,071	<b>193,319</b>	272,683	8,197	<b>280,880</b>
Projected Pheasant Harvest November	87,251	27,452	47,213	10,706	<b>172,621</b>	283,387	7,079	<b>290,466</b>
Projected Pheasant Harvest December	76,665	17,137	30,230	5,831	<b>129,862</b>	110,759	3,120	<b>113,880</b>
Projected Pheasant Harvest January	55,972	12,099	19,299	4,174	<b>91,544</b>	37,913	838	<b>38,751</b>



### Pheasant Harvest by Month



### Private Shooting Preserve Pheasant Harvest, 2015- 2024

Year	Pheasants Released	Released Pheasant Harvest	Wild Pheasant Harvest	Total Harvest
2015-16	432,304	243,168 (88%)	33,196 (12%)	276,383
2016-17	438,287	250,029 (89%)	30,507 (11%)	280,536
2017-18	468,668	264,291 (93%)	18,963 (7%)	283,254
2018-19	499,442	279,243 (91%)	26,744 (9%)	305,987
2019-20	499,179	283,988 (92%)	25,316 (8%)	306,430
2020-21	451,662	252,597 (91%)	23,974 (9%)	276,571
2021-22	579,672	330,674 (94%)	21,104 (6%)	350,581
2022-23	597,137	338,488 (94%)	21,047 (6%)	359,535
2023-24	612,857	354,133 (94%)	21,863 (6%)	375,716
2024-25	632,021	357,057 (94%)	23,015 (6%)	380,072

\*Summary of private shooting preserve records

# **PARTRIDGE**

The 2024 partridge season was open 21 September 2024 - 31 January 2025 statewide. Harvest surveys were sent to both resident and nonresident hunters. The daily limit was 5 birds, possession 15. To hunt partridge residents were required to hold small game, 1-day small game, adult or senior combination, or youth small game licenses; nonresidents were required to obtain adult or youth small game or nonresident shooting preserve licenses. Harvest surveys were sent to both resident and nonresident hunters. No shooting preserve license holders were surveyed and none of their harvest is included in any of the data in this report.

In 2024, there were 86,366 resident and 87,475 nonresident licenses issued that allowed holders to hunt partridge. Approximately 15,000 residents and 13,000 nonresidents were surveyed for the upland bird seasons. Survey response rates were 27% for residents and 32% for nonresidents.

Based on survey responses indicating at least one day of hunting partridge, there were a projected 3,349 resident and 3,185 nonresident partridge hunters.

An estimated 11,471 partridge were harvested (5,674 by residents, 5,796 by nonresidents) during the 2024 season. When asked their satisfaction on the season, (1 being least satisfied, 7 being most satisfied), resident upland bird hunters reported an average satisfaction rating of 5.23 while nonresidents reported a higher satisfaction rating of 5.85.

## Comparison of the 2015 - 2024 partridge harvests

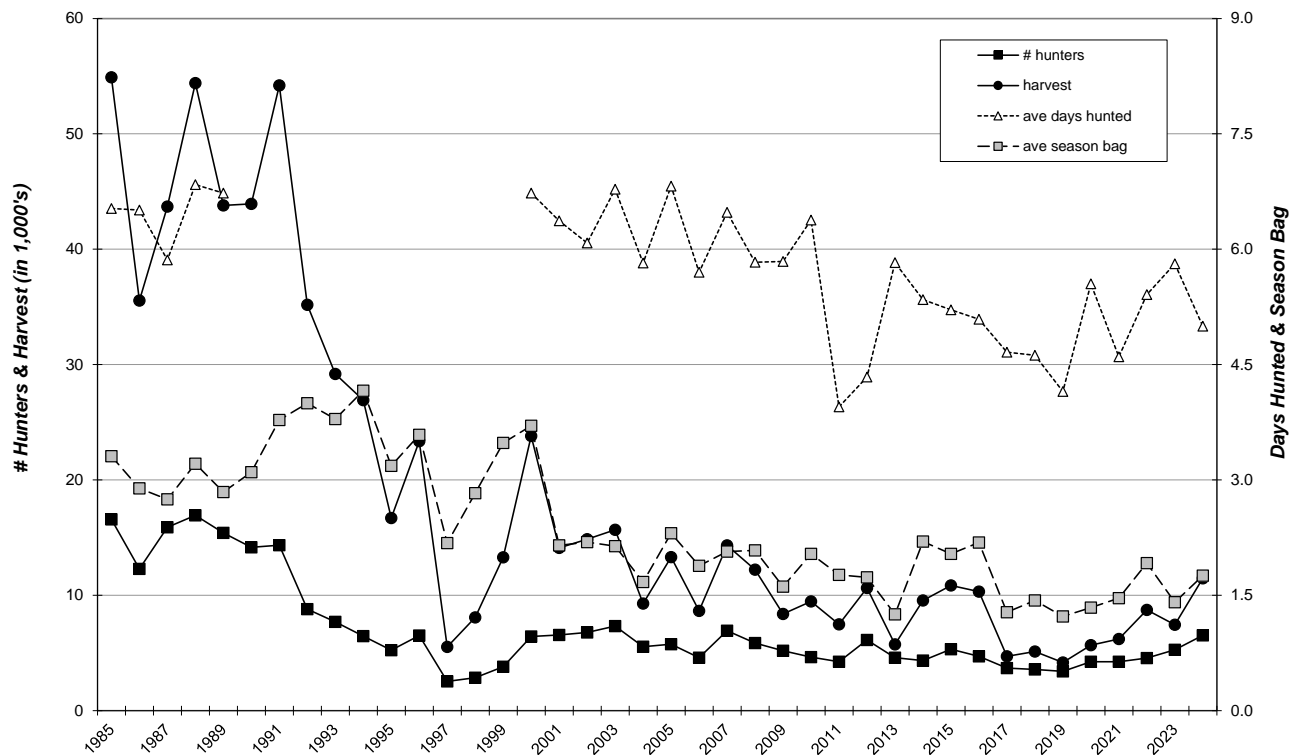
Year	<b>Residents</b>				<b>Nonresidents</b>			
	Hunters	Harvest	Ave Days Hunted	Ave Bag	Hunters	Harvest	Ave Days Hunted	Ave Bag
2015	3,189	5,840	5.63	1.85	2,133	5,019	4.05	3.08
2016	2,516	7,053	5.87	2.73	2,204	3,272	4.21	1.48
2017	2,005	2,496	5.44	1.24	1,682	2,224	3.93	1.32
2018	1,672	1,223	4.82	0.75	1,904	3,900	4.38	2.05
2019	1,850	1,703	5.48	1.04	1,565	2,478	4.34	1.58
2020	2,432	3,505	6.85	1.46	1,806	2,177	4.32	1.21
2021	1,851	2,766	4.78	1.50	2,398	3,448	4.47	1.44
2022	2,236	4,362	6.70	1.99	2,318	4,379	4.15	1.94
2023	2,701	3,441	6.97	1.30	2,580	4,014	4.56	1.51
2024	3,349	5,674	5.32	1.66	3,185	5,796	4.67	1.84

South Dakota Game Report No 2025-08 - 2024 Small Game, Upland Bird & Migratory Bird Harvest Projections  
 Corey Huxoll

<b>PARTRIDGE HARVEST PROJECTIONS FOR 2024</b>						<b>NONRESIDENT TOTALS</b>		
Revised: 3/6/2025	<b>RESIDENT TOTALS BY LICENSE TYPE</b>							
	Combo	Senior	Small	Youth	Sum	Nonres	Youth Sm	Sum
	Combo	Game	SmGm	Estimates	Sm Game	Game	Estimates	
<b>Licenses Sold</b>	46,248	12,124	21,676	6,318	<b>86,366</b>	83,991	3,484	<b>87,475</b>
<b>Projected ACTIVE UPLAND BIRD HUNTERS</b>	<b>30,546</b>	<b>7,119</b>	<b>16,992</b>	<b>4,785</b>	<b>59,442</b>	<b>79,780</b>	<b>3,279</b>	<b>83,059</b>
Number Sampled by Survey	8,225	2,063	3,616	1,089	<b>14,993</b>	12,752	501	<b>13,253</b>
Number Responded to Survey	2,265	843	708	202	<b>4,018</b>	4,128	70	<b>4,198</b>
% Responded and Participated in Season	66%	59%	78%	76%	67%	97%	96%	97%
Responded and Participated in Season	1,496	495	555	153	<b>2,699</b>	4,019	67	<b>4,086</b>
Responded but DID NOT HUNT	769	348	153	49	<b>1,319</b>	109	3	<b>112</b>
<b>Survey Response Rate</b>	<b>27.5%</b>	<b>40.9%</b>	<b>19.6%</b>	<b>18.5%</b>	<b>26.8%</b>	<b>32.4%</b>	<b>14.0%</b>	<b>31.7%</b>
No. Hunters Reporting Partridge Days	93	28	24	10	<b>155</b>	158	1	<b>159</b>
Sum Partridge Hunted Days	443	182	159	41	<b>825</b>	739	4	<b>743</b>
Average Days Hunted Partridge	<b>4.76</b>	<b>6.50</b>	<b>6.63</b>	<b>4.10</b>	<b>5.32</b>	<b>4.68</b>	<b>4.00</b>	<b>4.67</b>
Sum Partridge Bagged	178	24	39	16	<b>257</b>	292	0	<b>292</b>
Average Season Partridge Bag	<b>1.91</b>	<b>0.86</b>	<b>1.63</b>	<b>1.60</b>	<b>1.66</b>	<b>1.85</b>	<b>0.00</b>	<b>1.84</b>
<b>Projected Days Partridge Hunting</b>	<b>9,045</b>	<b>2,618</b>	<b>4,868</b>	<b>1,282</b>	<b>17,813</b>	<b>14,670</b>	<b>196</b>	<b>14,865</b>
<b>Projected No. Partridge Hunters</b>	<b>1,899</b>	<b>403</b>	<b>735</b>	<b>313</b>	<b>3,349</b>	<b>3,136</b>	<b>49</b>	<b>3,185</b>
<b>Projected Partridge Bag</b>	<b>3,635</b>	<b>345</b>	<b>1,194</b>	<b>500</b>	<b>5,674</b>	<b>5,796</b>	<b>0</b>	<b>5,796</b>
	<b>TOTAL PARTRIDGE HARVEST =</b>					<b>11,471</b>		
<b>Upland Bird Hunters Mean Satisfaction Score *</b>	5.27	5.13	5.29	5.09	5.23	5.85	5.91	5.85

\* Based on scale of 1-7 with 1="very dissatisfied" and 7="very satisfied"

**STATEWIDE PARTRIDGE HARVEST, 1985-2024**



# **PRAIRIE CHICKEN & SHARP-TAILED GROUSE**

Historically, these two species, plus ruffed grouse, have been combined under the name "Prairie Grouse." In these reports, harvest estimates for these species were combined. Hunters were asked specifically how many of each species were harvested of the total harvest and 74% were identified as sharp-tailed grouse, 24% as prairie chickens, and 3% were unknown. They continue to be combined for the overall harvest estimates in this report.

The 2024 grouse season covered 21 September 2024 – 31 January 2025 statewide. Harvest surveys were sent to both resident and nonresident hunters. The daily limit was 3 birds, possession 15. To hunt grouse residents required to hold small game, 1-day small game, adult or senior combination, or youth small game licenses; nonresidents were required to obtain adult or youth small game or nonresident shooting preserve licenses. Harvest surveys were sent to both resident and nonresident hunters. No shooting preserve license holders were surveyed and none of their harvest is included in any of the data in this report.

In 2024, there were 86,366 resident and 87,475 nonresident licenses issued that allowed holders to hunt grouse. Approximately 15,000 residents and 13,000 nonresidents were surveyed for the upland bird seasons. Survey response rates were 27% for residents and 32% for nonresidents.

Based on survey responses indicating at least one day of hunting grouse, there were a projected 10,898 resident and 8,325 nonresident grouse hunters. A projected total of 98,926 grouse were harvested (70,956 by residents, 27,970 by nonresidents) during the 2024 season.

When asked their satisfaction on the season, (1 being very dissatisfied, and 7 being very satisfied), resident upland bird hunters reported an average rating of 5.23 while nonresidents reported a rating of 5.85.

## Comparison of the 2015 - 2024 prairie grouse season statistics

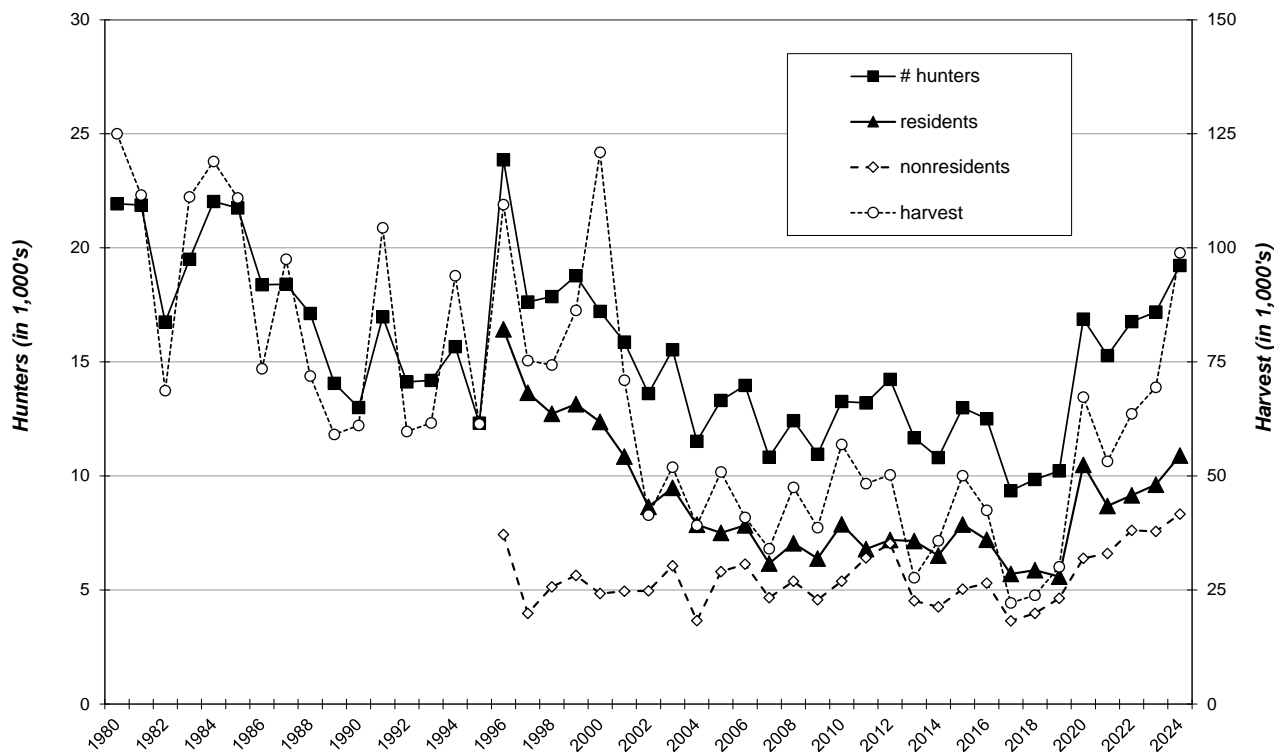
Year	Residents					Nonresidents				
	Hunters	Harvest	Ave Day Hunted	Ave Bag	Satisfaction	Hunters	Harvest	Ave Day Hunted	Ave Bag	Satisfaction
2015	7,866	34,506	4.72	4.40	4.98	5,032	15,388	4.05	3.08	5.49
2016	7,199	31,611	4.88	4.40	4.72	5,203	11,294	4.04	2.18	5.43
2017	5,703	15,863	4.57	2.80	4.23	3,645	6,290	3.81	1.73	5.06
2018	5,868	16,431	4.36	2.83	4.64	3,979	7,429	4.08	1.87	5.38
2019	5,583	18,601	4.45	3.33	4.67	4,637	11,452	3.74	2.47	5.28
2020	10,487	48,947	5.14	4.78	5.06	6,389	18,314	4.33	2.88	5.75
2021	8,680	36,583	5.55	4.28	4.75	6,597	16,636	4.22	2.53	5.38
2022	9,149	40,263	5.53	4.46	5.09	7,616	23,354	3.97	3.10	5.85
2023	9,617	46,228	5.80	4.78	5.03	7,567	23,214	4.04	3.10	5.72
2024	10,898	70,956	6.29	6.51	5.23	8,325	27,970	4.14	3.40	5.85

South Dakota Game Report No 2025-08 - 2024 Small Game, Upland Bird & Migratory Bird Harvest Projections  
 Corey Huxoll

	<b>PRAIRIE GROUSE HARVEST PROJECTIONS FOR 2024</b>					<b>NONRESIDENT TOTALS</b>		
	<b>RESIDENT TOTALS BY LICENSE TYPE</b>							
	Combo	Senior	Small	Youth	Sum	Nonres	Youth Sm	Sum
	Combo	Game	SmGm	Estimates	Sm Game	Game	Estimates	
Revised:								
3/6/2025								
<b>Licenses Sold</b>	46,248	12,124	21,676	6,318	<b>86,366</b>	83,991	3,484	<b>87,475</b>
<b>Projected ACTIVE UPLAND BIRD HUNTERS</b>	<b>30,546</b>	<b>7,119</b>	<b>16,992</b>	<b>4,785</b>	<b>59,442</b>	<b>79,780</b>	<b>3,279</b>	<b>83,059</b>
Number Sampled by Survey	8,225	2,063	3,616	1,089	<b>14,993</b>	12,752	501	<b>13,253</b>
Number Responded to Survey	2,265	843	708	202	<b>4,018</b>	4,128	70	<b>4,198</b>
% Responded and Participated in Season	66%	59%	78%	76%	67%	97%	96%	97%
Responded and Participated in Season	1,496	495	555	153	<b>2,699</b>	4,019	67	<b>4,086</b>
Responded but DID NOT HUNT	769	348	153	49	<b>1,319</b>	109	3	<b>112</b>
<b>Survey Response Rate</b>	<b>27.5%</b>	<b>40.9%</b>	<b>19.6%</b>	<b>18.5%</b>	<b>26.8%</b>	<b>32.4%</b>	<b>14.0%</b>	<b>31.7%</b>
No. Hunters Reporting Prairie Grouse Days	314	104	65	32	<b>515</b>	412	3	<b>415</b>
Sum Prairie Grouse Hunted Days	1,834	651	569	185	<b>3,239</b>	1,709	11	<b>1,720</b>
Average Days Hunted Prairie Grouse	<b>5.84</b>	<b>6.26</b>	<b>8.75</b>	<b>5.78</b>	<b>6.29</b>	<b>4.15</b>	<b>3.67</b>	<b>4.14</b>
Sum Prairie Grouse Bagged	2,156	609	421	169	<b>3,355</b>	1,409	0	<b>1,409</b>
Average Season Prairie Grouse Bag	<b>6.87</b>	<b>5.86</b>	<b>6.48</b>	<b>5.28</b>	<b>6.51</b>	<b>3.42</b>	<b>0.00</b>	<b>3.40</b>
<b>Projected Days Prairie Grouse Hunting</b>	<b>37,448</b>	<b>9,363</b>	<b>17,420</b>	<b>5,786</b>	<b>70,017</b>	<b>33,925</b>	<b>538</b>	<b>34,463</b>
<b>Projected No. Prairie Grouse Hunters</b>	<b>6,411</b>	<b>1,496</b>	<b>1,990</b>	<b>1,001</b>	<b>10,898</b>	<b>8,179</b>	<b>147</b>	<b>8,325</b>
<b>Projected Prairie Grouse Bag</b>	<b>44,022</b>	<b>8,759</b>	<b>12,889</b>	<b>5,286</b>	<b>70,956</b>	<b>27,970</b>	<b>0</b>	<b>27,970</b>
	<b>TOTAL PRAIRIE GROUSE HARVEST =</b>					<b>98,926</b>		
<b>Upland Bird Hunters Mean Satisfaction Score *</b>	5.27	5.13	5.29	5.09	5.23	5.85	5.91	5.85

\* Based on scale of 1-7 with 1="very dissatisfied" and 7="very satisfied"

**PRAIRIE GROUSE HUNTERS & HARVEST 1980-2024**



South Dakota Game Report No 2025-08 - 2024 Small Game, Upland Bird & Migratory Bird Harvest Projections  
Corey Huxoll

<b>Resident Grouse Harvest Distribution by County 2024</b>										
COUNTY	HUNTER DISTRIBUTION				HARVEST DISTRIBUTION				Birds/Hunter	
	# Reported	# Projected	% of Total	# Proj w/ Unk *	# Reported	# Projected	% of Total	# Proj w/ Unk *		
Minnehaha	0	0	0.0	0	0	0	0.0	0	0	
Pennington	36	762	7.3	799	254	5,372	7.9	5,583	7.1	
Brown	1	21	0.2	22	13	275	0.4	286	13.0	
Beadle	1	21	0.2	22	0	0	0.0	0	0.0	
Codington	2	42	0.4	44	0	0	0.0	0	0.0	
Brookings	0	0	0.0	0	0	0	0.0	0	0	
Yankton	0	0	0.0	0	0	0	0.0	0	0	
Davison	0	0	0.0	0	0	0	0.0	0	0	
Lawrence	5	106	1.0	111	28	592	0.9	615	5.6	
Aurora	2	42	0.4	44	0	0	0.0	0	0.0	
Bennett	10	212	2.0	222	51	1,079	1.6	1,121	5.1	
Bon Homme	0	0	0.0	0	0	0	0.0	0	0	
Brule	5	106	1.0	111	10	211	0.3	220	2.0	
Buffalo	2	42	0.4	44	5	106	0.2	110	2.5	
Butte	18	381	3.7	400	199	4,209	6.2	4,374	11.0	
Campbell	1	21	0.2	22	0	0	0.0	0	0.0	
Charles Mix	4	85	0.8	89	19	402	0.6	418	4.7	
Clark	0	0	0.0	0	0	0	0.0	0	0	
Clay	0	0	0.0	0	0	0	0.0	0	0	
Corson	16	339	3.3	355	113	2,390	3.5	2,484	7.1	
Custer	12	254	2.4	266	27	571	0.8	593	2.2	
Day	2	42	0.4	44	1	21	0.0	22	0.5	
Deuel	0	0	0.0	0	0	0	0.0	0	0	
Dewey	16	339	3.3	355	108	2,284	3.3	2,374	6.7	
Douglas	0	0	0.0	0	0	0	0.0	0	0	
Edmunds	3	63	0.6	67	1	21	0.0	22	0.3	
Fall River	19	402	3.9	422	127	2,686	3.9	2,792	6.7	
Faulk	3	63	0.6	67	8	169	0.2	176	2.7	
Grant	4	85	0.8	89	5	106	0.2	110	1.2	
Gregory	6	127	1.2	133	26	550	0.8	572	4.3	
Haakon	23	487	4.7	510	210	4,441	6.5	4,616	9.1	
Hamlin	0	0	0.0	0	0	0	0.0	0	0	
Hand	7	148	1.4	155	24	508	0.7	528	3.4	
Hanson	0	0	0.0	0	0	0	0.0	0	0	
Harding	23	487	4.7	510	129	2,728	4.0	2,836	5.6	
Hughes	10	212	2.0	222	27	571	0.8	593	2.7	
Hutchinson	0	0	0.0	0	0	0	0.0	0	0	
Hyde	1	21	0.2	22	2	42	0.1	44	2.0	
Jackson	7	148	1.4	155	43	909	1.3	945	6.1	
Jerauld	0	0	0.0	0	0	0	0.0	0	0	
Jones	11	233	2.2	244	84	1,777	2.6	1,846	7.6	
Kingsbury	0	0	0.0	0	0	0	0.0	0	0	
Lake	0	0	0.0	0	0	0	0.0	0	0	
Lincoln	1	21	0.2	22	0	0	0.0	0	0.0	
Lyman	26	550	5.3	577	167	3,532	5.2	3,671	6.4	
McCook	0	0	0.0	0	0	0	0.0	0	0	
McPherson	14	296	2.9	311	146	3,088	4.5	3,209	10.4	
Marshall	1	21	0.2	22	0	0	0.0	0	0.0	
Meade	42	889	8.6	932	322	6,810	10.0	7,078	7.7	
Mellette	12	254	2.4	266	92	1,946	2.9	2,022	7.7	
Miner	0	0	0.0	0	0	0	0.0	0	0	
Moody	0	0	0.0	0	0	0	0.0	0	0	
Perkins	51	1,079	10.4	1,132	355	7,508	11.0	7,803	7.0	
Potter	6	127	1.2	133	21	444	0.7	462	3.5	
Roberts	0	0	0.0	0	0	0	0.0	0	0	
Sanborn	0	0	0.0	0	0	0	0.0	0	0	
Spink	1	21	0.2	22	6	127	0.2	132	6.0	
Stanley	44	931	9.0	977	349	7,381	10.8	7,672	7.9	
Sully	5	106	1.0	111	21	444	0.7	462	4.2	
Tripp	11	233	2.2	244	54	1,142	1.7	1,187	4.9	
Turner	0	0	0.0	0	0	0	0.0	0	0	
Union	0	0	0.0	0	0	0	0.0	0	0	
Walworth	7	148	1.4	155	11	233	0.3	242	1.6	
Ziebach	19	402	3.9	422	163	3,447	5.0	3,583	8.6	
Oglala Lakota	1	21	0.2	22	7	148	0.2	154	7.0	
Todd	0	0	0.0	0	0	0	0.0	0	0	
Unknown	24	508	-	-	127	2,686	-	-	5.3	
<b>TOTALS:</b>	<b>515</b>	<b>10,898</b>	<b>100.0%</b>	<b>10,898</b>	<b>3,355</b>	<b>70,956</b>	<b>100%</b>	<b>70,956</b>	<b>6.51</b>	

Last Revised: 12 March 2025

\* Includes unknown county projection values by assuming unknown county values are distributed the same as reported county values. Total values may be different due to rounding.

\*\* Calculation uses "# projected" values without correction for unknown/unreported county values.

South Dakota Game Report No 2025-08 - 2024 Small Game, Upland Bird & Migratory Bird Harvest Projections  
 Corey Huxoll

<b>Nonresident Grouse Harvest Distribution by County 2024</b>										
COUNTY	HUNTER DISTRIBUTION				HARVEST DISTRIBUTION				Birds/Hunter	
	# Reported	# Projected	% of Total	# Proj w/ Unk *	# Reported	# Projected	% of Total	# Proj w/ Unk *		
Minnehaha	1	20	0.3	22	2	40	0.2	43	2.0	
Pennington	3	60	0.8	66	7	139	0.5	150	2.3	
Brown	4	80	1.1	88	8	159	0.6	171	2.0	
Beadle	3	60	0.8	66	0	0	0.0	0	0.0	
Codington	2	40	0.5	44	2	40	0.2	43	1.0	
Brookings	0	0	0.0	0	0	0	0.0	0	0	
Yankton	0	0	0.0	0	0	0	0.0	0	0	
Davison	1	20	0.3	22	0	0	0.0	0	0.0	
Lawrence	2	40	0.5	44	3	60	0.2	64	1.5	
Aurora	1	20	0.3	22	0	0	0.0	0	0.0	
Bennett	8	160	2.1	176	34	675	2.6	726	4.2	
Bon Homme	0	0	0.0	0	0	0	0.0	0	0	
Brule	8	160	2.1	176	13	258	1.0	278	1.6	
Buffalo	3	60	0.8	66	26	516	2.0	556	8.6	
Butte	1	20	0.3	22	5	99	0.4	107	4.9	
Campbell	9	181	2.4	198	19	377	1.5	406	2.1	
Chas Mix	0	0	0.0	0	0	0	0.0	0	0	
Clark	2	40	0.5	44	3	60	0.2	64	1.5	
Clay	0	0	0.0	0	0	0	0.0	0	0	
Corson	7	140	1.8	154	38	754	2.9	812	5.4	
Custer	3	60	0.8	66	6	119	0.5	128	2.0	
Day	2	40	0.5	44	2	40	0.2	43	1.0	
Deuel	0	0	0.0	0	0	0	0.0	0	0	
Dewey	19	381	5.0	417	99	1,965	7.6	2,115	5.2	
Douglas	1	20	0.3	22	0	0	0.0	0	0.0	
Edmunds	1	20	0.3	22	0	0	0.0	0	0.0	
Fall River	0	0	0.0	0	0	0	0.0	0	0	
Faulk	2	40	0.5	44	1	20	0.1	21	0.5	
Grant	1	20	0.3	22	5	99	0.4	107	4.9	
Gregory	2	40	0.5	44	1	20	0.1	21	0.5	
Haakon	8	160	2.1	176	34	675	2.6	726	4.2	
Hamlin	2	40	0.5	44	5	99	0.4	107	2.5	
Hand	7	140	1.8	154	5	99	0.4	107	0.7	
Hanson	0	0	0.0	0	0	0	0.0	0	0	
Harding	6	120	1.6	132	45	893	3.4	962	7.4	
Hughes	25	502	6.6	549	79	1,568	6.0	1,688	3.1	
Hutchinson	0	0	0.0	0	0	0	0.0	0	0	
Hyde	1	20	0.3	22	0	0	0.0	0	0.0	
Jackson	6	120	1.6	132	27	536	2.1	577	4.5	
Jerauld	2	40	0.5	44	1	20	0.1	21	0.5	
Jones	18	361	4.7	395	49	973	3.7	1,047	2.7	
Kingsbury	0	0	0.0	0	0	0	0.0	0	0	
Lake	0	0	0.0	0	0	0	0.0	0	0	
Lincoln	0	0	0.0	0	0	0	0.0	0	0	
Lyman	56	1,123	14.8	1,230	178	3,533	13.6	3,803	3.1	
McCook	0	0	0.0	0	0	0	0.0	0	0	
McPherson	5	100	1.3	110	6	119	0.5	128	1.2	
Marshall	0	0	0.0	0	0	0	0.0	0	0	
Meade	11	221	2.9	242	57	1,131	4.4	1,218	5.1	
Mellette	7	140	1.8	154	27	536	2.1	577	3.8	
Miner	1	20	0.3	22	0	0	0.0	0	0.0	
Moody	1	20	0.3	22	8	159	0.6	171	7.9	
Perkins	38	762	10.0	835	201	3,990	15.4	4,295	5.2	
Potter	7	140	1.8	154	7	139	0.5	150	1.0	
Roberts	2	40	0.5	44	1	20	0.1	21	0.5	
Sanborn	0	0	0.0	0	0	0	0.0	0	0	
Spink	2	40	0.5	44	1	20	0.1	21	0.5	
Stanley	42	843	11.1	923	183	3,633	14.0	3,910	4.3	
Sully	8	160	2.1	176	6	119	0.5	128	0.7	
Tripp	23	461	6.1	505	56	1,112	4.3	1,197	2.4	
Turner	0	0	0.0	0	0	0	0.0	0	0	
Union	0	0	0.0	0	0	0	0.0	0	0	
Walworth	5	100	1.3	110	6	119	0.5	128	1.2	
Ziebach	6	120	1.6	132	42	834	3.2	897	6.9	
Oglala Lakota	1	20	0.3	22	0	0	0.0	0	0.0	
Todd	3	60	0.8	66	11	218	0.8	235	3.6	
Unknown	36	722	-	-	100	1,985	-	-	2.7	
<b>TOTALS:</b>	<b>415</b>	<b>8,325</b>	<b>100%</b>	<b>8,325</b>	<b>1,409</b>	<b>27,970</b>	<b>100%</b>	<b>27,970</b>	<b>3.36</b>	

Last Revised: 12 March 2025

\* Includes unknown county projection values by assuming unknown county values are distributed the same as reported county values. Total values may be different due to rounding.

\*\* Calculation uses "# projected" values without correction for unknown/unreported county values.

# SAGE GROUSE

The first modern sage grouse hunting season was held in 1955. Between 1955 and 1980, the season was open only about half the years, primarily during the 1970s, and seasons were restrictive. Length of season ranged from 2 to 7 days, with many seasons held during the week with daily bag limits of 1 or 2 birds. In 1980, the population was declining and continued to decline until the mid-1980s. It then stabilized with some fluctuations from year to year. Currently, the population is considered too low to support having a hunting season. The sage grouse hunting season was re-opened in 2000, closed again in 2013, re-opened in 2016, and closed again in 2017.

## Comparison of the 2007-2024 Sage Grouse harvests

Year	# of Hunters	Total Harvest	Harvest by County		Harvest by Age & Sex			
			Butte	Harding	Hatch Year Male	Hatch Year Female	Adult Male	Adult Female
2007	25	10	2	8	5	2	3	0
2008	24	17	5	12	3	5	6	3
2009	20	7	3	4	2	3	0	2
2010	26	12	9	3	1	0	6	5
2011	27	11	6	5	3	2	3	3
2012	35	9	2	7	0	0	3	6
2013-15	No Season							
2016	28	10	1	9	3	4	1	2
2017-24	No Season							

## **MOURNING DOVE**

The 2024 mourning dove season was open 1 September - 9 November statewide. The daily limit was 15 birds, possession 30. To hunt doves, residents were required to hold a small game, 1-day small game, adult or senior combination, or youth small game license; nonresidents were required to obtain a nonresident small game or nonresident youth small game license. All hunters were also required to purchase a Migratory Bird Certificate.

In 2024, 22,969 resident and 87,475 nonresident licenses were issued to hunt doves. Approximately 44% of resident migratory bird hunters and 15% of nonresident small game hunters were surveyed for the mourning dove season. Survey response rates were 30% for residents and 32% for nonresidents.

Based on survey responses indicating at least one day of hunting doves, there were an estimated 8,142 active dove hunters. The five counties with the highest reported dove harvests were Hughes, Brookings, Minnehaha, Codington, and Aurora.

An estimated total of 173,250 doves were harvested during the 2024 season. When asked their satisfaction on the season, (1 being least, 7 being most satisfied), resident dove hunters reported an average satisfaction rating of 5.09, nonresidents 5.69.

### Summary comparison of the 2015 - 2024 mourning dove seasons

Year	Residents					Nonresidents				
	Number Hunters	Harvest	Ave Day Hunted	Ave Bag	Satisfaction	Number Hunters	Harvest	Ave Day Hunted	Ave Bag	Satisfaction
2015	7,255	127,217	4.66	17.53	5.07	396	7,705	3.29	19.46	5.83
2016	7,131	122,876	4.19	17.23	4.89	318	3,601	2.79	11.32	5.59
2017	6,828	124,052	4.11	18.17	5.12	275	3,463	3.79	12.58	4.63
2018	6,531	120,835	4.16	18.50	5.12	275	3,571	3.22	13.00	5.72
2019	6,003	102,771	3.92	17.12	5.14	290	3,827	3.15	13.20	4.85
2020	6,844	122,464	4.45	17.89	5.21	416	7,158	3.55	17.23	6.06
2021	6,298	107,736	4.04	17.11	5.15	393	6,923	3.35	17.62	5.38
2022	6,855	141,349	4.39	20.62	5.29	506	7,652	3.32	15.13	6.35
2023	8,024	169,500	4.32	21.12	5.20	439	10,546	3.33	24.04	5.75
2024	7,613	161,679	4.55	21.24	5.09	539	11,571	3.42	21.88	5.69

***MOURNING DOVE HARVEST PROJECTIONS FOR 2024***

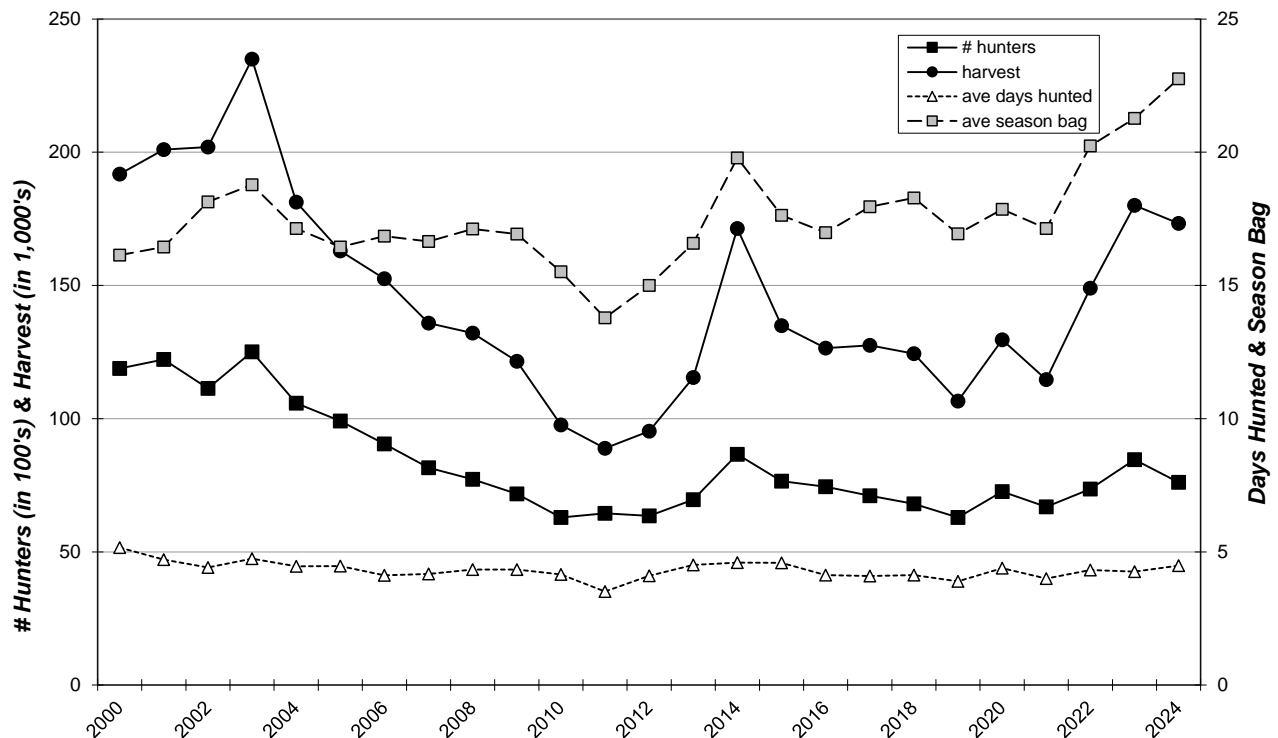
Last Revised: 12 June 2025

	Resident	Non Resident
<b>Licenses Sold *</b>	22,969	87,475
<b>Unique License Holders</b>	22,968	85,370
<b>Projected ACTIVE MOURNING DOVE HUNTERS</b>	<b>7,613</b>	<b>529</b>
Number Sampled by Survey	9,995	13,253
Number Responded to Survey	2,999	4,198
Responded and Participated in Season	994	26
Responded but DID NOT HUNT	<b>2,005</b>	<b>4,172</b>
<b>Survey Response Rate</b>	<b>30.0%</b>	<b>31.7%</b>
No. Hunters Reporting Dove Days	994	26
Total Reported Dove Hunted Days	4,524	89
<b>Average Days Hunted Doves</b>	<b>4.55</b>	<b>3.42</b>
Total Reported Doves Bagged	21,110	569
<b>Average Dove Bag for Season</b>	<b>21.24</b>	<b>21.88</b>
<b>Projected Days Dove Hunting</b>	<b>34,649</b>	<b>1,810</b>
<b>Projected No. Dove Hunters</b>	<b>7,613</b>	<b>529</b>
<b>Projected Dove Bag</b>	<b>161,679</b>	<b>11,571</b>
<b>Avg Days Hunted</b>		<b>4.48</b>
<b>TOTAL DOVE HARVEST =</b>		<b>173,250</b>
<b>Dove Hunter Mean Satisfaction Score *1*</b>	5.09	5.69

\* Nonresident number represents total number of small game licenses sold.

\*1\* Based on scale of 1-7 with 1=very dissatisfied & 7=very satisfied.

**STATEWIDE MOURNING DOVE HARVEST, 2000-2024**



South Dakota Game Report No 2025-08 - 2024 Small Game, Upland Bird & Migratory Bird Harvest Projections  
 Corey Huxoll

<b>Mourning Dove Harvest Distribution by County 2024</b>									
COUNTY	HUNTER DISTRIBUTION				HARVEST DISTRIBUTION				Birds/Hunter **
	# Reported	# Projected	% of Total	# Proj w/ Unk *	# Reported	# Projected	% of Total	# Proj w/ Unk *	
Minnehaha	58	463	5.7	468	1,078	8,615	5.0	8,679	18.6
Pennington	38	303	3.8	307	718	5,738	3.3	5,781	18.9
Brown	35	279	3.5	282	626	5,003	2.9	5,040	17.9
Beadle	20	160	2.0	161	345	2,757	1.6	2,778	17.3
Codington	39	311	3.9	315	955	7,632	4.4	7,689	24.5
Brookings	52	415	5.2	420	848	6,777	3.9	6,827	16.3
Yankton	24	192	2.4	194	711	5,682	3.3	5,724	29.7
Davison	22	176	2.2	178	502	4,012	2.3	4,042	22.8
Lawrence	4	32	0.4	32	48	384	0.2	386	12.0
Aurora	24	192	2.4	194	825	6,593	3.8	6,642	34.4
Bennett	5	40	0.5	40	116	927	0.5	934	23.2
Bon Homme	21	168	2.1	169	413	3,301	1.9	3,325	19.7
Brule	12	96	1.2	97	206	1,646	1.0	1,659	17.2
Buffalo	0	0	0.0	0	0	0	0.0	0	0
Butte	8	64	0.8	65	200	1,598	0.9	1,610	25.0
Campbell	1	8	0.1	8	2	16	0.0	16	2.0
Charles Mix	34	271	3.4	274	798	6,377	3.7	6,425	23.5
Clark	10	80	1.0	81	260	2,078	1.2	2,093	26.0
Clay	21	168	2.1	169	475	3,796	2.2	3,824	22.6
Corson	3	24	0.3	24	33	264	0.2	266	11.0
Custer	13	104	1.3	105	124	991	0.6	998	9.5
Day	17	136	1.7	137	569	4,547	2.6	4,581	33.5
Deuel	16	128	1.6	129	465	3,716	2.2	3,744	29.1
Dewey	3	24	0.3	24	57	456	0.3	459	19.0
Douglas	8	64	0.8	65	126	1,007	0.6	1,014	15.8
Edmunds	10	80	1.0	81	144	1,151	0.7	1,159	14.4
Fall River	22	176	2.2	178	365	2,917	1.7	2,939	16.6
Faulk	4	32	0.4	32	110	879	0.5	886	27.5
Grant	9	72	0.9	73	169	1,351	0.8	1,361	18.8
Gregory	16	128	1.6	129	409	3,269	1.9	3,293	25.6
Haakon	5	40	0.5	40	100	799	0.5	805	20.0
Hamlin	11	88	1.1	89	225	1,798	1.0	1,811	20.5
Hand	12	96	1.2	97	242	1,934	1.1	1,948	20.2
Hanson	10	80	1.0	81	256	2,046	1.2	2,061	25.6
Harding	0	0	0.0	0	0	0	0.0	0	0
Hughes	68	543	6.7	549	1,693	13,530	7.9	13,630	24.9
Hutchinson	12	96	1.2	97	280	2,238	1.3	2,254	23.4
Hyde	0	0	0.0	0	0	0	0.0	0	0
Jackson	6	48	0.6	48	183	1,462	0.9	1,473	30.5
Jerauld	5	40	0.5	40	56	448	0.3	451	11.2
Jones	8	64	0.8	65	227	1,814	1.1	1,828	28.4
Kingsbury	10	80	1.0	81	224	1,790	1.0	1,803	22.4
Lake	11	88	1.1	89	126	1,007	0.6	1,014	11.5
Lincoln	20	160	2.0	161	219	1,750	1.0	1,763	11.0
Lyman	21	168	2.1	169	332	2,653	1.5	2,673	15.8
McCook	25	200	2.5	202	420	3,356	2.0	3,381	16.8
McPherson	9	72	0.9	73	150	1,199	0.7	1,208	16.7
Marshall	9	72	0.9	73	129	1,031	0.6	1,039	14.4
Meade	18	144	1.8	145	327	2,613	1.5	2,633	18.2
Mellette	2	16	0.2	16	9	72	0.0	72	4.5
Miner	9	72	0.9	73	292	2,334	1.4	2,351	32.5
Moody	13	104	1.3	105	133	1,063	0.6	1,071	10.2
Perkins	7	56	0.7	56	146	1,167	0.7	1,175	20.9
Potter	11	88	1.1	89	249	1,990	1.2	2,005	22.7
Roberts	11	88	1.1	89	142	1,135	0.7	1,143	12.9
Sanborn	13	104	1.3	105	472	3,772	2.2	3,800	36.4
Spink	16	128	1.6	129	578	4,619	2.7	4,653	36.2
Stanley	32	255	3.2	258	815	6,513	3.8	6,562	25.5
Sully	24	192	2.4	194	616	4,923	2.9	4,959	25.7
Tripp	11	88	1.1	89	208	1,662	1.0	1,675	18.9
Turner	23	184	2.3	186	487	3,892	2.3	3,921	21.2
Union	13	104	1.3	105	288	2,302	1.3	2,319	22.2
Walworth	10	80	1.0	81	126	1,007	0.6	1,014	12.6
Ziebach	2	16	0.2	16	28	224	0.1	225	14.0
Shannon	1	8	0.1	8	6	48	0.0	48	6.0
Todd	2	16	0.2	16	38	304	0.2	306	19.0
Unk/Unreported	11	88	-	-	160	1,279	-	-	14.6
<b>TOTALS:</b>	<b>1,020</b>	<b>8,142</b>	<b>100%</b>	<b>8,142</b>	<b>21,679</b>	<b>173,250</b>	<b>100%</b>	<b>173,250</b>	<b>21.28</b>

Last Revised: 12 June 2025  
 \* Includes unknown county projection values by assuming unknown county values are distributed the same as reported county values. Total values may be different due to rounding.  
 \*\* Calculation uses "# projected" values without correction for unknown/unreported county values.

# WATERFOWL

In 2024, there were an estimated 15,601 active resident migratory bird hunters in South Dakota, of which 12,614 were active waterfowl hunters. There were also an estimated 4,889 nonresidents that participated in waterfowl hunting. All nonresident waterfowl license holders that provided a valid email address and a random sample of 10,000 resident migratory bird certificate holders were surveyed. Nonresident youth license holders were not surveyed. The survey response rates were 30% for residents and 41% for nonresidents.

When asked their satisfaction on the season, (1 being least satisfied, 7 being most satisfied), waterfowl hunters reported an overall average rating of 4.81 for residents, and 5.19 for nonresidents.

Summary comparison of the 2015 - 2024 waterfowl seasons

Year	Residents				Nonresidents		
	Active Mig Bird Hunters	Active Waterfowl Hunters	Survey Response Rate	Satisfaction	Active Waterfowl Hunters	Survey Response Rate	Satisfaction
2015	17,231	14,579	64%	4.84	4,195	78%	4.91
2016	16,461	13,770	61%	4.86	4,254	73%	4.79
2017	16,478	13,814	60%	5.04	4,523	69%	5.16
2018	15,371	12,750	60%	4.95	4,326	70%	5.10
2019	15,316	13,401	62%	5.10	4,665	70%	5.37
2020	16,819	14,597	37%	5.10	4,489	53%	5.37
2021	15,406	13,177	36%	5.11	4,646	47%	5.18
2022	15,219	12,498	33%	5.08	4,544	43%	5.41
2023	16,614	13,756	31%	5.01	4,847	42%	5.50
2024	15,601	12,614	30%	4.81	4,889	41%	5.19

<b>WATERFOWL HUNTING SUMMARY FOR 2024</b>											
<i>Revised: 27 May 2025</i>											
	NONRESIDENT TOTALS BY UNIT									NR Totals	Resident Total
	00A	00B	11A	00V	00X	00Y	00Z	YW1			
1st Choice Applicants	443	5,837	35	224	26	579	309			7,453	NA
Licenses Available	250	3,925	25	550	750	500	300	100		6,400	NA
<b>Licenses Sold *3*</b>	<b>249</b>	<b>3,916</b>	<b>25</b>	<b>549</b>	<b>454</b>	<b>500</b>	<b>300</b>	<b>23</b>		<b>6,016</b>	22,969
<b>Projected ACTIVE MIGRATORY BIRD HUNTERS</b>	<b>191</b>	<b>3,331</b>	<b>18</b>	<b>443</b>	<b>264</b>	<b>392</b>	<b>227</b>	<b>23</b>		<b>4,889</b>	<b>15,601</b>
<b>Unique Licenseholders</b>	<b>249</b>	<b>3,915</b>	<b>25</b>	<b>549</b>	<b>445</b>	<b>500</b>	<b>300</b>	<b>23</b>		<b>6,006</b>	<b>22,968</b>
Number Sampled by Survey	<b>247</b>	<b>3,912</b>	<b>25</b>	<b>548</b>	<b>441</b>	<b>500</b>	<b>300</b>	<b>0</b>		<b>5,973</b>	9,995
Number Responded to Survey	107	1,723	7	171	128	204	99			<b>2,439</b>	2,999
% Responded and Participated in Season	77%	85%	71%	81%	59%	78%	76%			82%	68%
Responded and Participated in Season	82	1,466	5	138	76	160	75			<b>2,002</b>	2,037
Responded but DID NOT HUNT	25	257	2	33	52	44	24			<b>437</b>	962
<b>Survey Response Rate</b>	<b>43.3%</b>	<b>44.0%</b>	<b>28.0%</b>	<b>31.2%</b>	<b>29.0%</b>	<b>40.8%</b>	<b>33.0%</b>			<b>40.8%</b>	<b>30.0%</b>
<b>YOUTH SEASON PARTICIPATION:</b>											
No. Hunters Reporting Participation	N/A	N/A	N/A	N/A	N/A	N/A	N/A	N/A	N/A	N/A	176
<b>Projected No. Hunters Participating</b>											1,348
<b>Percent Hunters Participating</b>											5.9%
No. Hunters Reporting Goose or Duck Days	82	1466	5	138	76	160	75			2,002	1,647
<b>Projected Waterfowl Hunters - Ducks and Geese</b>	<b>191</b>	<b>3,331</b>	<b>18</b>	<b>443</b>	<b>264</b>	<b>392</b>	<b>227</b>	<b>23</b>		<b>4,889</b>	<b>12,614</b>
<b>TOTAL WATERFOWL HUNTERS = 17,503</b>											
<b>All Waterfowl Hunter Mean Satisfaction Score *1*</b>	4.69	5.24	5.20	4.99	4.79	5.28	5.27			5.19	4.81
<small>*1* Based on scale of 1-7 with 1=very dissatisfied &amp; 7=very satisfied</small>											
<small>*3* Numbers of resident licenses sold are based on the number of migratory bird certificates in the 2024 database prior to Feb. 17, 2025</small>											

# TUNDRA SWAN

The 2024 Tundra Swan season was open from September 28 - January 10 in the following counties: Campbell, Walworth, Potter, Sully, Hughes, Hyde, Hand, Faulk, Spink, McPherson, Edmunds, Brown, Marshall, Roberts, Day, Grant, Codington, Clark, Hamlin, Deuel, Beadle, Kingsbury, Brookings, Buffalo, Jerauld, Brule, Aurora, Sanborn, Miner, Lake, Moody, Davison, Hanson, McCook, and Minnehaha. Residents and nonresidents could purchase up to two licenses. To hunt swans, residents were required to hold a small game, 1-day small game, senior, adult, or junior combination, or youth small game license, plus a migratory bird certification. Nonresidents were required to obtain a nonresident waterfowl license, plus a migratory bird certification. All hunters aged 16 and over were also required to obtain a federal waterfowl stamp. In addition, all hunters needed to apply for and receive a lottery-issued Tundra Swan license.

There were 1,300 licenses available for the 2024 Tundra Swan season (1,100 residents, 200 nonresidents) and 1,300 licenses were sold (1,000 residents, 300 nonresidents; 136 hunters purchased two licenses each). All swan hunters that provided a valid email address were surveyed using Survey 123 Software, and the response rate was 54%.

From the survey responses, there were a projected 232 swans harvested during the 2024 season. An estimated 8 swans were crippled and not recovered. When asked their satisfaction on the season, (1 being least satisfied, 7 being most satisfied), swan hunters reported an average rating of 5.00. From those who responded, 35% indicated they did not hunt for swans (some hunters indicate they just purchase the license in case they happen to see a swan while hunting other waterfowl). The average days hunted by swan hunters (3.20 days) projected to a total of 2,436 recreation days for the season.

The two counties with the highest reported swan harvests were Brown and McPherson.

## Comparison of the 2015 – 2024 Tundra Swan seasons

Year	Licenses Sold			Harvest (w/o cripples)	Avg Days Hunted	Percent Success	Average Satisfaction
	Resident	Nonres	Total				
2015	1,088	211	1,299	229	3.07	18%	5.09
2016	938	145	1,083	82	2.96	8%	4.81
2017	888	180	1,068	232	5.17	22%	5.10
2018	973	216	1,189	179	4.71	15%	4.85
2019	972	213	1,185	214	4.18	18%	5.11
2020	919	247	1,166	189	4.76	16%	4.76
2021	982	215	1,197	86	4.49	7%	4.49
2022	958	307	1,265	142	4.68	11%	4.72
2023	1,022	276	1,298	294	4.64	23%	5.11
2024	1,000	300	1,300	232	3.20	18%	5.00

## 2024 Tundra Swan Harvest Projections

Unit/Type	Licenses							Response Rate	Tag Success	Cripples **	Harvest Projections			Total Harvest	Ave. Days Hunted	Ave. Satis- faction	
	Resident			Nonresident							Hunters	Adults	Juvnies				Unk.
	App. 1st Choice *	Available	Sold	App. 1st Choice *	Available	Sold											
00A-81	400	1,100	1,000	2	200	300	1,164	54.3%	18%	8	210	22	0	232	3.20	5.00	

\* Number of 1st drawing applicants with that season as 1st choice.

\*\* Cripple estimate not included in Total Harvest Estimate.

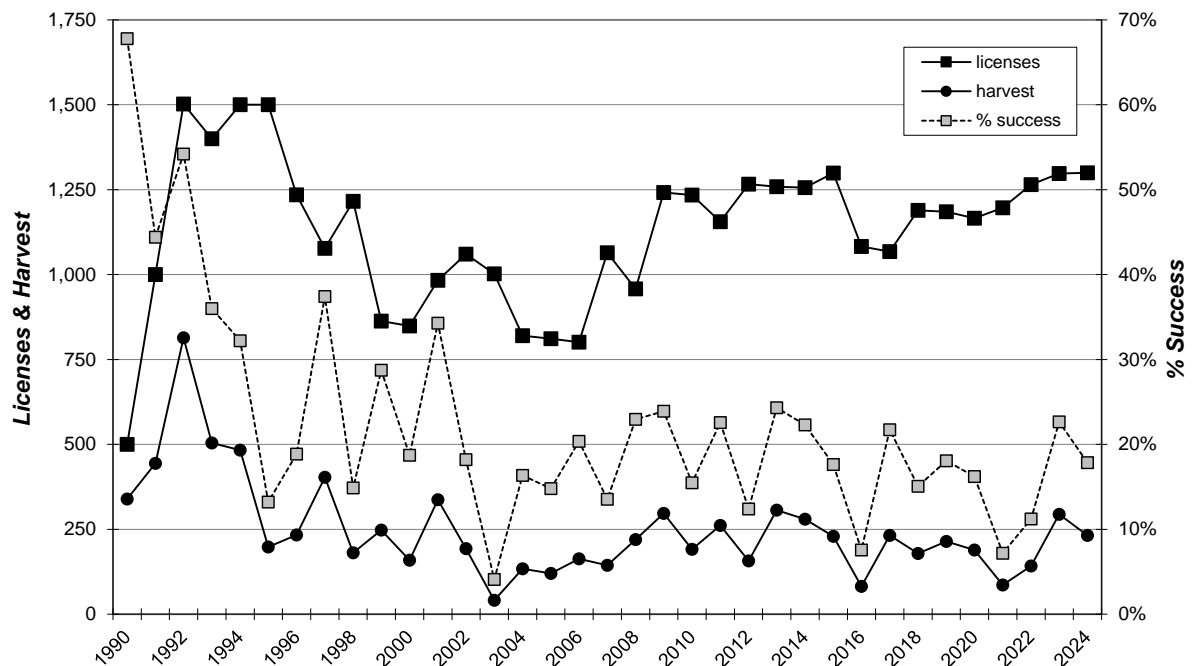
Satisfaction is based on scale with 1=very dissatisfied and 7=very satisfied.

<b>Tundra Swan Harvest Distribution by County 2024</b>				
<b>COUNTY</b>	<b>HARVEST DISTRIBUTION</b>			
	<b># Reported</b>	<b># Projected</b>	<b>% of Total</b>	<b># Proj w/ Unk *</b>
Brown	17	31	16.0	37
Beadle	1	2	0.9	2
Codington	2	4	1.9	4
Brookings	2	4	1.9	4
Yankton	0	0	0.0	0
Campbell	4	7	3.8	9
Clark	7	13	6.6	15
Day	15	28	14.2	33
Deuel	0	0	0.0	0
Douglas	0	0	0.0	0
Edmunds	7	13	6.6	15
Faulk	0	0	0.0	0
Grant	1	2	0.9	2
Hamlin	2	4	1.9	4
Hand	0	0	0.0	0
Hughes	1	2	0.9	2
Hyde	0	0	0.0	0
Kingsbury	1	2	0.9	2
Lake	0	0	0.0	0
McPherson	20	37	18.9	44
Marshall	15	28	14.2	33
Miner	0	0	0.0	0
Potter	1	2	0.9	2
Roberts	7	13	6.6	15
Spink	3	6	2.8	7
Sully	0	0	0.0	0
Walworth	0	0	0.0	0
Unk/Unreported	20	37	-	-
<b>TOTALS:</b>	<b>126</b>	<b>232</b>	<b>100%</b>	<b>232</b>

*Last Revised: 5 June 2025*

*\* Includes unknown county projection values by assuming unknown county values are distributed the same as reported county values. Total values may be different due to rounding.*

### TUNDRA SWAN HARVEST, 1990-2024



## **DUCKS (all species)**

The 2024 duck season was open 21 September 2024 - 16 January 2025 statewide, although some units/zones may have opened later and/or closed sooner. A special Youth Waterfowl season was open 7-8 September for youth that had not reached age 18 by the first day of the season. For the Traditional bag option, the daily limit was 6 ducks (including mergansers), which could include no more than 5 mallards (up to 2 hens), 1 scaup, 2 redheads, 3 wood ducks, 2 canvasbacks, or 1 pintail. Hunters could also harvest 2 bonus blue-winged teal daily during the first 16 days of the season. The daily limit on coots was 15. For the 3-Duck bag option, the daily limit was 3 ducks of any species or sex, including mergansers. The possession limit was three times the daily bag for each species. To hunt ducks, residents were required to hold small game, 1-day small game, adult or senior combination, or youth small game licenses plus a migratory bird certification. Nonresidents were required to obtain a nonresident waterfowl license plus a migratory bird certification. All hunters aged 16 and over were also required to obtain a federal waterfowl stamp.

In 2024, there were an estimated 15,908 hunters who hunted at least one day for ducks (11,227 residents, 4,681 nonresidents). From the survey responses, there were a projected total of 231,125 ducks harvested (176,323 by residents, 54,802 by nonresidents). Nonresidents reported harvesting 7% of their ducks within 20 miles of the Missouri River. Average bag for residents was 15.70, and for nonresidents ranged from 6.19 in unit 00X to 20.50 in unit 11A.

The five counties with the highest reported resident hunter numbers were Clark, Day, Brown, Brookings, and Kingsbury. The five counties with the highest reported unit 00B nonresident hunter numbers were Day, Brown, Clark, Marshall, and Roberts.

When asked their satisfaction on the season, (1 being most dissatisfied, 7 being most satisfied), duck hunters reported an average satisfaction rating of 4.85 for residents and 5.18 for nonresidents.

The average days hunted by all hunters (7.45 residents, 4.30 nonresidents) projected to a total of 103,779 recreation days for the season.

### Comparison of the 2019 - 2024 duck season statistics

Year	Resident Hunters					Nonresident Hunters				
	Number Hunters	Harvest	Ave Day Hunted	Ave Bag	Satisfaction	Number Hunters	Harvest	Ave Day Hunted	Ave Bag	Satisfaction
2019	11,295	176,885	7.30	15.66	5.17	4,423	52,225	4.47	11.81	5.38
2020	12,285	190,515	7.75	15.51	5.15	4,274	51,169	4.36	11.97	5.38
2021	10,634	151,207	7.37	14.22	5.10	4,442	47,802	4.28	10.76	5.18
2022	10,417	158,173	7.40	15.18	5.10	4,267	52,082	4.34	12.21	5.40
2023	11,726	189,983	7.40	16.20	5.07	4,594	59,912	4.40	13.04	5.51
2024	11,227	176,323	7.45	15.70	4.85	4,681	54,802	4.30	11.71	5.18

### **DUCK HUNTING SUMMARY FOR 2024**

Revised: 27 May 2025

	NONRESIDENT TOTALS BY UNIT									NR Totals	Resident Total
	00A	00B	11A	00V	00X	00Y	00Z	YW1	Totals		
No. Hunters Reporting Duck Days	78	1,422	2	133	64	158	74			1,931	1,466
Total Reported Duck Hunted Days	463	6,928	9	355	161	434	176			8,526	10,920
<b>Average Days Hunted Ducks</b>	<b>5.94</b>	<b>4.87</b>	<b>4.50</b>	<b>2.67</b>	<b>2.52</b>	<b>2.75</b>	<b>2.38</b>			<b>4.30</b>	<b>7.45</b>
Total Reported Ducks Bagged	894	18,857	41	1,073	396	1,380	503			23,144	23,023
<b>Average Duck Bag for Season</b>	<b>11.46</b>	<b>13.26</b>	<b>20.50</b>	<b>8.07</b>	<b>6.19</b>	<b>8.73</b>	<b>6.80</b>			<b>11.71</b>	<b>15.70</b>
Projected Days Duck Hunting	1,077	15,742	32	1,140	560	1,064	533			20,148	83,631
Projected No. Duck Hunters	182	3,231	7	427	223	387	224			4,681	11,227
Projected Duck Bag	2,080	42,847	146	3,445	1,377	3,382	1,524			54,802	176,323
Duck Harvest Reported Within 20 Miles of Missouri River	839	638	0	31	118	9	38			1,673	N/A
Projected Ducks Bagged w/in 20 miles of Missouri River	1,952	1,450	0	100	410	22	115			4,049	N/A
<b>TOTAL DUCK HARVEST = 231,125</b>											
<b>Duck Hunter Mean Satisfaction Score *1*</b>	4.68	5.23	6.00	5.05	4.58	5.29	5.25			5.18	4.85

\*1\* Based on scale of 1-7 with 1=very dissatisfied & 7=very satisfied

South Dakota Game Report No 2025-08 - 2024 Small Game, Upland Bird & Migratory Bird Harvest Projections  
 Corey Huxoll

<b>Resident Duck Harvest Distribution by County 2024</b>									
<b>COUNTY</b>	<b>HUNTER DISTRIBUTION</b>				<b>HARVEST DISTRIBUTION</b>				
	<b># Reported</b>	<b># Projected</b>	<b>% of Total</b>	<b># Proj w/ Unk *</b>	<b># Reported</b>	<b># Projected</b>	<b>% of Total</b>	<b># Proj w/ Unk *</b>	<b>Birds/Hunter **</b>
Minnehaha	64	490	4.4	498	705	5,399	3.1	5,462	11.0
Pennington	15	115	1.0	117	196	1,501	0.9	1,519	13.1
Brown	91	697	6.3	708	1,903	14,574	8.4	14,745	20.9
Beadle	25	191	1.7	195	268	2,052	1.2	2,076	10.7
Codington	68	521	4.7	529	1,152	8,823	5.1	8,926	16.9
Brookings	75	574	5.2	584	1,152	8,823	5.1	8,926	15.4
Yankton	16	123	1.1	124	196	1,501	0.9	1,519	12.3
Davison	10	77	0.7	78	176	1,348	0.8	1,364	17.6
Lawrence	19	146	1.3	148	158	1,210	0.7	1,224	8.3
Aurora	19	146	1.3	148	316	2,420	1.4	2,448	16.6
Bennett	7	54	0.5	54	80	613	0.4	620	11.4
Bon Homme	16	123	1.1	124	284	2,175	1.2	2,200	17.8
Brule	23	176	1.6	179	390	2,987	1.7	3,022	17.0
Buffalo	1	8	0.1	8	0	0	0.0	0	0.0
Butte	17	130	1.2	132	227	1,738	1.0	1,759	13.4
Campbell	3	23	0.2	23	22	168	0.1	170	7.3
Charles Mix	33	253	2.3	257	535	4,097	2.4	4,145	16.2
Clark	77	590	5.3	599	1,491	11,419	6.6	11,552	19.4
Clay	14	107	1.0	109	137	1,049	0.6	1,061	9.8
Corson	1	8	0.1	8	1	8	0.0	8	1.0
Custer	2	15	0.1	16	11	84	0.0	85	5.5
Day	110	842	7.6	856	2,281	17,469	10.0	17,673	20.7
Deuel	26	199	1.8	202	365	2,795	1.6	2,828	14.0
Dewey	3	23	0.2	23	19	146	0.1	147	6.3
Douglas	10	77	0.7	78	131	1,003	0.6	1,015	13.1
Edmunds	34	260	2.4	265	487	3,730	2.1	3,773	14.3
Fall River	29	222	2.0	226	245	1,876	1.1	1,898	8.4
Faulk	10	77	0.7	78	165	1,264	0.7	1,278	16.5
Grant	19	146	1.3	148	153	1,172	0.7	1,185	8.1
Gregory	1	8	0.1	8	12	92	0.1	93	12.0
Haakon	3	23	0.2	23	51	391	0.2	395	17.0
Hamlin	48	368	3.3	373	636	4,871	2.8	4,928	13.3
Hand	29	222	2.0	226	875	6,701	3.8	6,780	30.2
Hanson	19	146	1.3	148	239	1,830	1.1	1,852	12.6
Harding	1	8	0.1	8	24	184	0.1	186	24.0
Hughes	24	184	1.7	187	300	2,298	1.3	2,324	12.5
Hutchinson	13	100	0.9	101	130	996	0.6	1,007	10.0
Hyde	7	54	0.5	54	81	620	0.4	628	11.6
Jackson	3	23	0.2	23	7	54	0.0	54	2.3
Jerauld	8	61	0.6	62	61	467	0.3	473	7.6
Jones	2	15	0.1	16	7	54	0.0	54	3.5
Kingsbury	93	712	6.4	724	1,818	13,923	8.0	14,086	19.5
Lake	57	437	4.0	443	756	5,790	3.3	5,858	13.3
Lincoln	13	100	0.9	101	95	728	0.4	736	7.3
Lyman	4	31	0.3	31	40	306	0.2	310	10.0
McCook	48	368	3.3	373	708	5,422	3.1	5,486	14.8
McPherson	30	230	2.1	233	479	3,668	2.1	3,711	16.0
Marshall	36	276	2.5	280	607	4,649	2.7	4,703	16.9
Meade	12	92	0.8	93	52	398	0.2	403	4.3
Mellette	0	0	0.0	0	0	0	0.0	0	0
Miner	22	168	1.5	171	375	2,872	1.6	2,906	17.0
Moody	15	115	1.0	117	176	1,348	0.8	1,364	11.7
Perkins	0	0	0.0	0	0	0	0.0	0	0
Potter	6	46	0.4	47	72	551	0.3	558	12.0
Roberts	34	260	2.4	265	498	3,814	2.2	3,859	14.6
Sanborn	15	115	1.0	117	282	2,160	1.2	2,185	18.8
Spink	23	176	1.6	179	420	3,217	1.8	3,254	18.3
Stanley	1	8	0.1	8	14	107	0.1	108	14.0
Sully	15	115	1.0	117	316	2,420	1.4	2,448	21.1
Tripp	0	0	0.0	0	0	0	0.0	0	0
Turner	13	100	0.9	101	308	2,359	1.4	2,386	23.7
Union	3	23	0.2	23	23	176	0.1	178	7.7
Walworth	8	61	0.6	62	49	375	0.2	380	6.1
Ziebach	0	0	0.0	0	0	0	0.0	0	0
Oglala Lakota	0	0	0.0	0	0	0	0.0	0	0
Todd	0	0	0.0	0	0	0	0.0	0	0
Unk/Unreported	23	176	-	-	266	2,037	-	-	11.6
<b>TOTALS:</b>	<b>1,466</b>	<b>11,227</b>	<b>100%</b>	<b>11,227</b>	<b>23,023</b>	<b>176,323</b>	<b>100%</b>	<b>176,323</b>	<b>15.70</b>

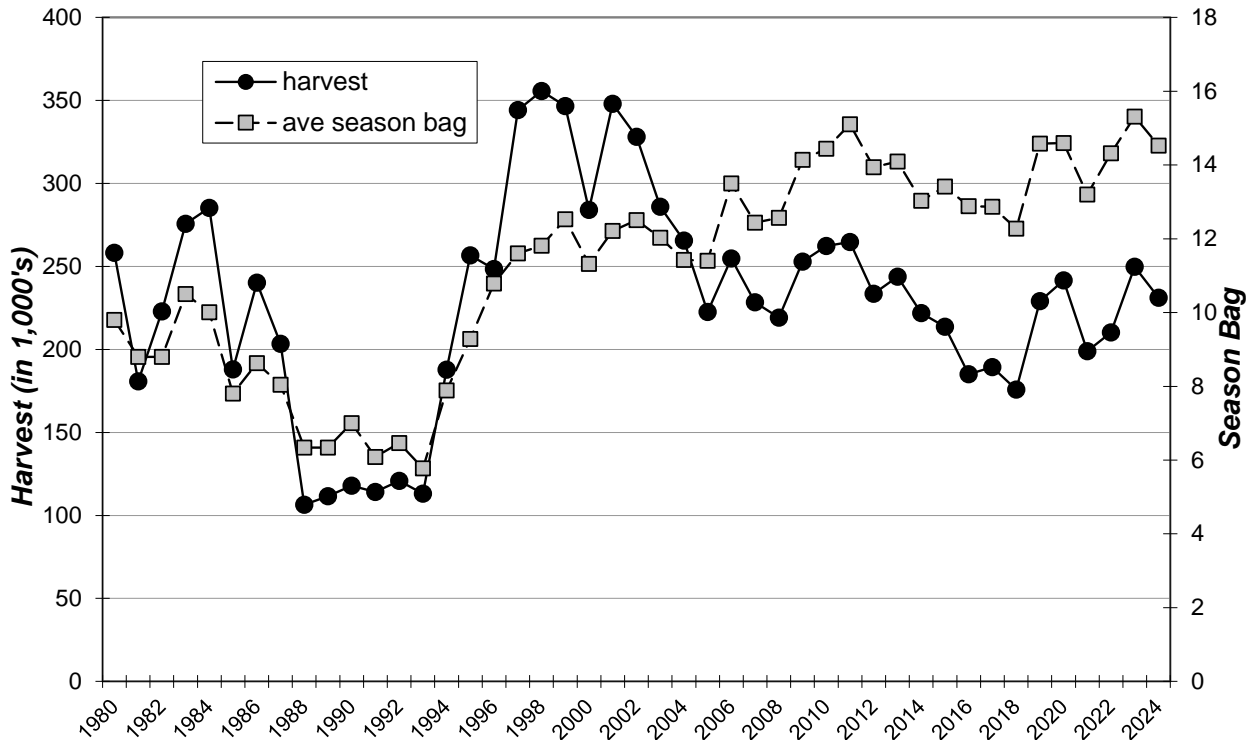
Last Revised: 27 May 2025  
 \* Includes unknown county projection values by assuming unknown county values are distributed the same as reported county values. Total values may be different due to rounding.  
 \*\* Calculation uses "# projected" values without correction for unknown/unreported county values.

**South Dakota Game Report No 2025-08 - 2024 Small Game, Upland Bird & Migratory Bird Harvest Projections**  
 Corey Huxoll

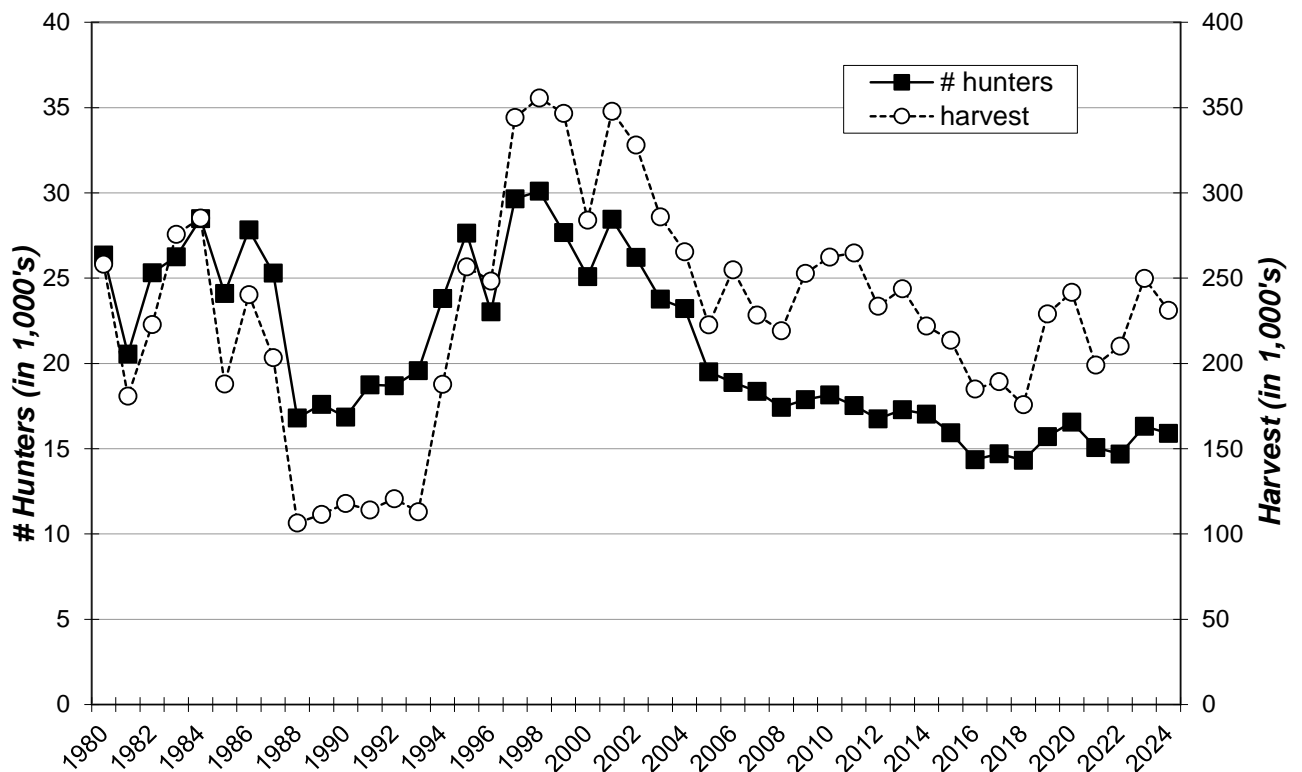
2024 Reported Nonresident Duck Hunting Distribution by County										
COUNTY	00A	00B	00V	00X	00Y	00Z	11A	00B PERCENT	00V PERCENT	00Y PERCENT
Minnehaha	0	2	0	0	0	0	0	0.1%	0.0%	0.0%
Pennington	0	0	0	0	0	0	0	0.0%	0.0%	0.0%
<b>Brown</b>	0	<b>141</b>	<b>45</b>	<b>3</b>	<b>0</b>	<b>0</b>	<b>0</b>	<b>10.3%</b>	<b>37.5%</b>	<b>0.0%</b>
Beadle	0	25	1	0	0	4	0	1.8%	0.8%	0.0%
Codington	0	51	0	0	<b>17</b>	0	0	3.7%	0.0%	<b>11.5%</b>
Brookings	0	29	1	0	0	0	0	2.1%	0.8%	0.0%
Yankton	10	2	0	0	0	0	0	0.1%	0.0%	0.0%
Davison	0	5	0	0	0	0	0	0.4%	0.0%	0.0%
Lawrence	0	1	0	0	0	5	0	0.1%	0.0%	0.0%
Aurora	0	25	0	0	0	1	0	1.8%	0.0%	0.0%
Bennett	0	0	1	0	1	0	2	0.0%	0.8%	0.7%
Bon Homme	38	0	0	0	0	0	0	0.0%	0.0%	0.0%
Brule	0	22	0	0	0	6	0	1.6%	0.0%	0.0%
Buffalo	0	1	0	1	2	0	0	0.1%	0.0%	1.4%
Butte	1	5	0	0	0	2	0	0.4%	0.0%	0.0%
Campbell	0	16	8	1	0	0	0	1.2%	6.7%	0.0%
Charles Mix	16	3	0	1	0	0	0	0.2%	0.0%	0.0%
<b>Clark</b>	0	<b>106</b>	0	0	<b>29</b>	0	0	<b>7.7%</b>	<b>0.0%</b>	<b>19.6%</b>
Clay	5	2	0	0	0	0	0	0.1%	0.0%	0.0%
Corson	0	2	0	0	0	1	0	0.1%	0.0%	0.0%
Custer	0	1	0	0	0	0	0	0.1%	0.0%	0.0%
<b>Day</b>	0	<b>342</b>	0	1	<b>39</b>	0	0	<b>24.9%</b>	<b>0.0%</b>	<b>26.4%</b>
Deuel	0	12	0	1	3	0	0	0.9%	0.0%	2.0%
Dewey	0	0	0	1	0	0	0	0.0%	0.0%	0.0%
Douglas	0	4	0	1	0	4	0	0.3%	0.0%	0.0%
Edmunds	0	79	<b>32</b>	0	0	0	0	5.7%	<b>26.7%</b>	0.0%
Fall River	0	3	0	0	0	1	0	0.2%	0.0%	0.0%
Faulk	0	29	21	4	0	0	0	2.1%	17.5%	0.0%
Grant	0	4	0	0	1	0	0	0.3%	0.0%	0.7%
Gregory	0	2	0	0	0	0	0	0.1%	0.0%	0.0%
Haakon	0	1	0	0	0	0	0	0.1%	0.0%	0.0%
Hamlin	0	11	0	0	4	0	0	0.8%	0.0%	2.7%
Hand	0	17	0	0	0	8	0	1.2%	0.0%	0.0%
Hanson	0	5	0	0	0	0	0	0.4%	0.0%	0.0%
Harding	0	0	0	0	0	0	0	0.0%	0.0%	0.0%
Hughes	0	8	0	7	0	0	0	0.6%	0.0%	0.0%
Hutchinson	0	2	0	0	0	1	0	0.1%	0.0%	0.0%
Hyde	0	6	1	0	0	0	0	0.4%	0.8%	0.0%
Jackson	0	1	0	0	0	0	0	0.1%	0.0%	0.0%
Jerauld	0	2	0	0	0	1	0	0.1%	0.0%	0.0%
Jones	0	1	0	0	0	1	0	0.1%	0.0%	0.0%
Kingsbury	0	63	0	0	2	5	0	4.6%	0.0%	1.4%
Lake	0	8	0	0	0	1	0	0.6%	0.0%	0.0%
Lincoln	0	1	0	0	0	0	0	0.1%	0.0%	0.0%
Lyman	0	1	0	3	0	0	0	0.1%	0.0%	0.0%
McCook	0	4	0	0	0	0	0	0.3%	0.0%	0.0%
McPherson	0	<b>68</b>	6	1	0	0	0	<b>4.9%</b>	<b>5.0%</b>	<b>0.0%</b>
<b>Marshall</b>	0	<b>74</b>	0	0	<b>18</b>	0	0	<b>5.4%</b>	<b>0.0%</b>	<b>12.2%</b>
Meade	0	1	0	0	0	0	0	0.1%	0.0%	0.0%
Mellette	0	0	0	0	0	0	0	0.0%	0.0%	0.0%
Miner	0	8	0	0	0	0	0	0.6%	0.0%	0.0%
Moody	0	0	0	0	0	3	0	0.0%	0.0%	0.0%
Perkins	0	7	0	0	0	0	0	0.5%	0.0%	0.0%
Potter	0	8	2	23	0	0	0	0.6%	1.7%	0.0%
<b>Roberts</b>	0	<b>96</b>	0	1	<b>24</b>	0	0	<b>7.0%</b>	<b>0.0%</b>	<b>16.2%</b>
Sanborn	0	13	0	0	0	1	0	0.9%	0.0%	0.0%
Spink	0	36	0	2	8	0	0	2.6%	0.0%	5.4%
Stanley	0	1	0	2	0	0	0	0.1%	0.0%	0.0%
Sully	0	4	0	5	0	0	0	0.3%	0.0%	0.0%
Tripp	0	2	0	0	0	1	0	0.1%	0.0%	0.0%
Turner	0	1	0	0	0	0	0	0.1%	0.0%	0.0%
Union	4	0	0	0	0	0	0	0.0%	0.0%	0.0%
Walworth	0	10	2	1	0	0	0	0.7%	1.7%	0.0%
Ziebach	0	1	0	0	0	0	0	0.1%	0.0%	0.0%
Oglala Lakota	0	0	0	0	0	0	0	0.0%	0.0%	0.0%
Todd	0	0	0	0	0	0	0	0.0%	0.0%	0.0%
<b>TOTALS:</b>	<b>74</b>	<b>1,375</b>	<b>120</b>	<b>59</b>	<b>148</b>	<b>46</b>	<b>2</b>	<b>100.0%</b>	<b>100.0%</b>	<b>100.0%</b>

Last updated: 27 May 2025

### STATEWIDE DUCK (all species) HARVEST, 1980-2024



### STATEWIDE DUCK SEASON PARTICIPATION, 1980-2024



# CANADA GEESE (all seasons)

Information provided in this section pertains to the entire Canada goose harvest in South Dakota and combines information from all seasons. The next two sections report specifically on the Early Fall (September) and Special Bennett County seasons.

The 2024 Canada goose season was open from 1 September 2024 - 16 February 2025 statewide, although some units may have opened later and/or closed sooner. The daily bag was 8 geese in Unit 1, but only 4 in Units 2 and 3 (refer to Hunting Handbook). Possession was three times the daily bag. Resident hunters were separately licensed for one Special Canada goose unit in Bennett County. To hunt geese, residents were required to hold small game, 1-day small game, youth small game, adult or senior combination licenses, plus a migratory bird certification. Nonresidents were required to obtain a nonresident waterfowl license plus a migratory bird certification. All hunters aged 16 and over were also required to obtain a federal waterfowl stamp. Special Canada goose season hunters were required to apply for and receive Special Canada goose season licenses.

In 2024, there were an estimated 10,067 hunters who hunted at least one day for Canada geese (7,865 residents, 2,201 nonresidents). From the survey responses, there were an estimated total of 70,803 Canada geese harvested (65,542 by residents, 5,261 by nonresidents). Average Canada goose bag for residents was 8.33, and for nonresidents 2.41. An estimated 10,716 Canada geese were harvested within 20 miles of the Missouri River.

The five counties with the highest reported harvest by residents were Codington, Day, Deuel, Clark, and Hughes, and by nonresidents in unit 00B were Day, Marshall, Roberts, Brown, and Edmunds.

When asked their satisfaction on the season, (1 being least satisfied, 7 being most satisfied), Canada goose hunters reported an average rating of 4.71 for residents and 5.10 for nonresidents. The average days hunted by all hunters (7.05 residents, 4.12 nonresidents) projected to a total of 64,307 recreation days for the season.

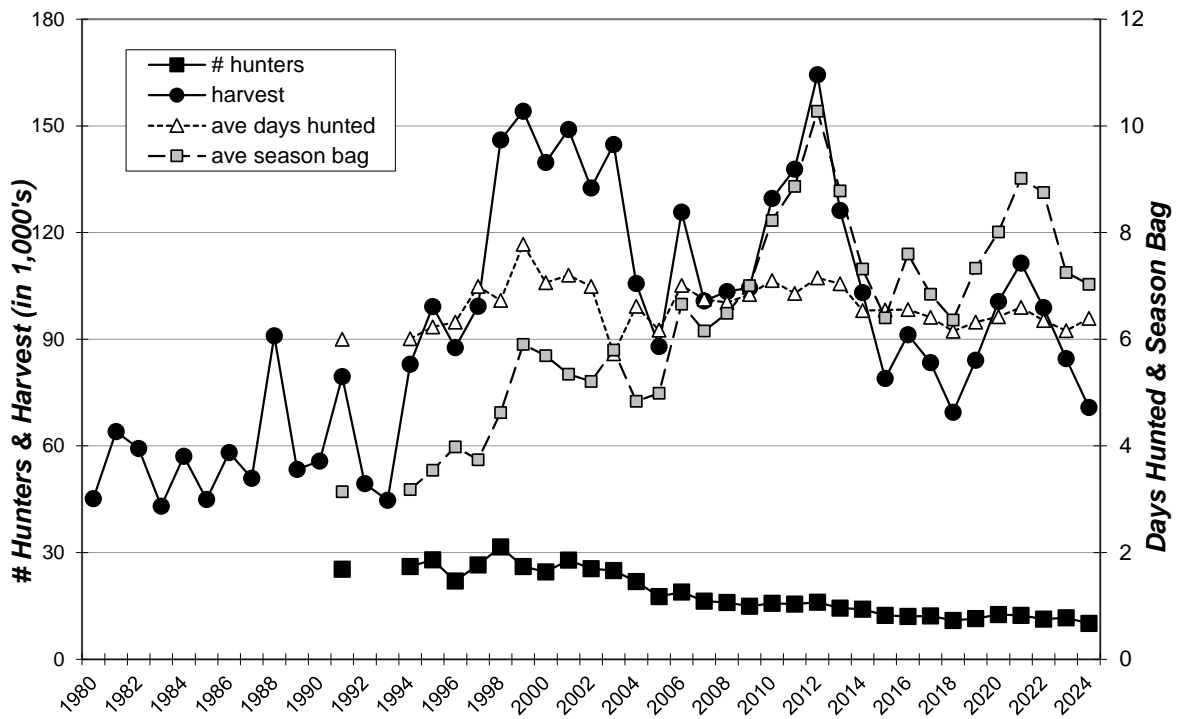
## Comparison of the 2020 - 2024 Canada goose harvest statistics

Year	Resident Hunters					Nonresident Hunters				
	Number Hunters	Harvest	Ave Days Hunted	Ave Bag	Satisfaction	Number Hunters	Harvest	Ave Days Hunted	Ave Bag	Satisfaction
2020	10,356	93,682	6.96	9.05	5.07	2,199	6,924	3.96	3.15	5.38
2021	9,997	104,693	7.20	10.47	5.14	2,357	6,736	4.14	2.89	5.27
2022	8,973	90,680	6.96	10.11	5.07	2,327	8,209	4.11	3.55	5.51
2023	9,361	78,633	6.70	8.40	4.97	2,295	5,925	4.02	2.59	5.48
2024	7,865	65,542	7.05	8.33	4.71	2,201	5,261	4.12	2.41	5.10

<b>CANADA GOOSE HARVEST PROJECTIONS FOR 2024</b>										
<i>Revised: 27 May 2025</i>										
	NONRESIDENT TOTALS BY UNIT								NR Totals	Resident Total
	00A	00B	11A	00V	00X	00Y	00Z	YW1		
No. Hunters Reporting Canada Goose Days	48	663	4	68	35	60	27		905	1,027
Total Reported Canada Goose Hunted Days	321	2,929	11	172	82	155	61		3,731	7,242
<b>Average Days Hunted Canada Geese</b>	<b>6.69</b>	<b>4.42</b>	<b>2.75</b>	<b>2.53</b>	<b>2.34</b>	<b>2.58</b>	<b>2.26</b>		<b>4.12</b>	<b>7.05</b>
Total Reported Canada Geese Bagged	221	1,572	4	104	109	106	62		2,178	8,558
<b>Average Canada Goose Bag for Season</b>	<b>4.60</b>	<b>2.37</b>	<b>1.00</b>	<b>1.53</b>	<b>3.11</b>	<b>1.77</b>	<b>2.30</b>		<b>2.41</b>	<b>8.33</b>
<b>Projected Days Canada Goose Hunting</b>	<b>747</b>	<b>6,655</b>	<b>39</b>	<b>552</b>	<b>285</b>	<b>380</b>	<b>185</b>		<b>8,844</b>	<b>55,463</b>
Projected No. Canada Goose Hunters	112	1,506	14	218	122	147	82		2,201	7,865
Projected Canada Goose Bag	514	3,572	14	334	379	260	188		5,261	65,542
Canada Geese Reported w/in 20 miles of Missouri River	221	85		5	67		11		389	1,270
Projected Canada Geese Bagged w/in 20 miles Missouri River	514	193		16	233		33		990	9,726
<b>TOTAL CANADA GOOSE HARVEST ALL SEASONS = 70,803</b>										
Canada Goose Hunter Mean Satisfaction Score *1*	4.53	5.13	5.25	4.93	4.80	5.45	5.33		5.10	4.71

\*1\* Based on scale of 1-7 with 1=very dissatisfied & 7=very satisfied

**STATEWIDE CANADA GOOSE (all seasons) HARVEST, 1980-2024**



South Dakota Game Report No 2025-08 - 2024 Small Game, Upland Bird & Migratory Bird Harvest Projections  
 Corey Huxoll

<b>Resident Canada Goose Harvest Distribution by County 2024</b>									
<b>COUNTY</b>	<b>HUNTER DISTRIBUTION</b>				<b>HARVEST DISTRIBUTION</b>				<b>Birds/Hunter **</b>
	<b># Reported</b>	<b># Projected</b>	<b>% of Total</b>	<b># Proj w/ Unk *</b>	<b># Reported</b>	<b># Projected</b>	<b>% of Total</b>	<b># Proj w/ Unk *</b>	
Minnehaha	36	276	3.6	281	124	950	1.5	957	3.4
Pennington	10	77	1.0	78	27	207	0.3	208	2.7
Brown	57	437	5.6	444	447	3,423	5.3	3,450	7.8
Beadle	17	130	1.7	133	87	666	1.0	671	5.1
Codington	44	337	4.4	343	474	3,630	5.6	3,658	10.8
Brookings	39	299	3.9	304	214	1,639	2.5	1,651	5.5
Yankton	15	115	1.5	117	120	919	1.4	926	8.0
Davison	6	46	0.6	47	50	383	0.6	386	8.3
Lawrence	12	92	1.2	94	30	230	0.4	232	2.5
Aurora	13	100	1.3	101	39	299	0.5	301	3.0
Bennett	22	168	2.2	171	78	597	0.9	602	3.5
Bon Homme	18	138	1.8	140	30	230	0.4	232	1.7
Brule	11	84	1.1	86	42	322	0.5	324	3.8
Buffalo	2	15	0.2	16	13	100	0.2	100	6.5
Butte	14	107	1.4	109	155	1,187	1.8	1,196	11.1
Campbell	6	46	0.6	47	65	498	0.8	502	10.8
Charles Mix	25	191	2.5	195	161	1,233	1.9	1,242	6.4
Clark	49	375	4.9	382	541	4,143	6.4	4,175	11.0
Clay	11	84	1.1	86	82	628	1.0	633	7.5
Corson	0	0	0.0	0	0	0	0.0	0	0
Custer	1	8	0.1	8	2	15	0.0	15	2.0
Day	74	567	7.3	577	910	6,969	10.7	7,023	12.3
Deuel	25	191	2.5	195	493	3,776	5.8	3,805	19.7
Dewey	0	0	0.0	0	0	0	0.0	0	0
Douglas	4	31	0.4	31	3	23	0.0	23	0.8
Edmunds	26	199	2.6	203	289	2,213	3.4	2,230	11.1
Fall River	21	161	2.1	164	136	1,042	1.6	1,050	6.5
Faulk	8	61	0.8	62	91	697	1.1	702	11.4
Grant	27	207	2.7	210	147	1,126	1.7	1,134	5.4
Gregory	0	0	0.0	0	0	0	0.0	0	0
Haakon	2	15	0.2	16	4	31	0.0	31	2.0
Hamlin	20	153	2.0	156	68	521	0.8	525	3.4
Hand	13	100	1.3	101	89	682	1.0	687	6.8
Hanson	7	54	0.7	55	35	268	0.4	270	5.0
Harding	1	8	0.1	8	10	77	0.1	77	10.0
Hughes	60	460	5.9	468	770	5,897	9.1	5,942	12.8
Hutchinson	7	54	0.7	55	25	191	0.3	193	3.6
Hyde	4	31	0.4	31	6	46	0.1	46	1.5
Jackson	2	15	0.2	16	1	8	0.0	8	0.5
Jerauld	4	31	0.4	31	8	61	0.1	62	2.0
Jones	6	46	0.6	47	13	100	0.2	100	2.2
Kingsbury	52	398	5.2	405	323	2,474	3.8	2,493	6.2
Lake	34	260	3.4	265	219	1,677	2.6	1,690	6.4
Lincoln	6	46	0.6	47	50	383	0.6	386	8.3
Lyman	0	0	0.0	0	0	0	0.0	0	0
McCook	15	115	1.5	117	73	559	0.9	563	4.9
McPherson	26	199	2.6	203	453	3,469	5.3	3,496	17.4
Marshall	29	222	2.9	226	250	1,915	2.9	1,929	8.6
Meade	6	46	0.6	47	74	567	0.9	571	12.3
Mellette	0	0	0.0	0	0	0	0.0	0	0
Miner	11	84	1.1	86	40	306	0.5	309	3.6
Moody	4	31	0.4	31	24	184	0.3	185	6.0
Perkins	5	38	0.5	39	27	207	0.3	208	5.4
Potter	3	23	0.3	23	13	100	0.2	100	4.3
Roberts	36	276	3.6	281	276	2,114	3.2	2,130	7.7
Sanborn	7	54	0.7	55	22	168	0.3	170	3.1
Spink	17	130	1.7	133	326	2,497	3.8	2,516	19.2
Stanley	11	84	1.1	86	159	1,218	1.9	1,227	14.5
Sully	8	61	0.8	62	88	674	1.0	679	11.0
Tripp	1	8	0.1	8	0	0	0.0	0	0.0
Turner	7	54	0.7	55	20	153	0.2	154	2.9
Union	7	54	0.7	55	48	368	0.6	370	6.9
Walworth	5	38	0.5	39	129	988	1.5	996	25.8
Ziebach	0	0	0.0	0	0	0	0.0	0	0
Shannon	0	0	0.0	0	0	0	0.0	0	0
Todd	0	0	0.0	0	0	0	0.0	0	0
Unk/Unreported	18	138	-	-	65	498	-	-	3.6
<b>TOTALS:</b>	<b>1,027</b>	<b>7,865</b>	<b>100%</b>	<b>7,865</b>	<b>8,558</b>	<b>65,542</b>	<b>100%</b>	<b>65,542</b>	<b>8.33</b>

Last Revised: 27 May 2025

\* Includes unknown county projection values by assuming unknown county values are distributed the same as reported county values. Total values may be different due to rounding.

\*\* Calculation uses "# projected" values without correction for unknown/unreported county values.

## **EARLY FALL CANADA GOOSE**

The 2024 Early Fall Canada goose season was open from 1-30 September in the Unit 1 counties specified in the 2024 hunting guide, which included most of the state. The daily bag limit was 8 geese and possession was 24. To hunt geese, residents were required to hold small game, 1-day small game, adult or senior combination, or youth small game licenses plus a migratory bird certification. Nonresidents were required to obtain a nonresident waterfowl license and migratory bird certification. All hunters aged 16 and over were also required to obtain a federal waterfowl stamp.

Resident hunters were surveyed utilizing the Migratory Bird Harvest Survey that is used to assess all migratory bird harvest for the year. Hunters were asked to break down how many geese they harvested during the Early Fall season out of the total number they harvested for the year. Nonresident hunters were surveyed using a separate Early Fall Canada Goose season survey.

In 2024, there were 23,347 hunters licensed to hunt the Early Fall Canada goose season (22,968 residents, 279 nonresidents). Approximately 44% (10,000) of the resident hunters and all nonresident hunters were surveyed. The survey response rates were 30% for residents and 29% for nonresidents.

A projected 2,664 hunters hunted at least one day in Unit 1 during the 2024 Early Fall season, and they harvested a projected 22,025 geese.

### Comparison of the 2015 - 2024 Early Fall Canada goose harvest statistics

<b>Year</b>	<b>Number Hunters</b>	<b>Harvest</b>	<b>Average Season Bag</b>
2015	3,883	20,735	5.34
2016	3,366	27,660	8.22
2017	3,226	25,808	8.00
2018	2,716	17,904	6.59
2019	3,000	21,054	7.02
2020	3,857	33,769	8.76
2021	3,671	33,179	9.04
2022	3,034	28,547	9.41
2023	3,008	25,764	8.57
2024	2,664	22,025	8.27

### EARLY FALL CANADA GOOSE HARVEST PROJECTIONS FOR 2024

Last Revised: 5 June 2025

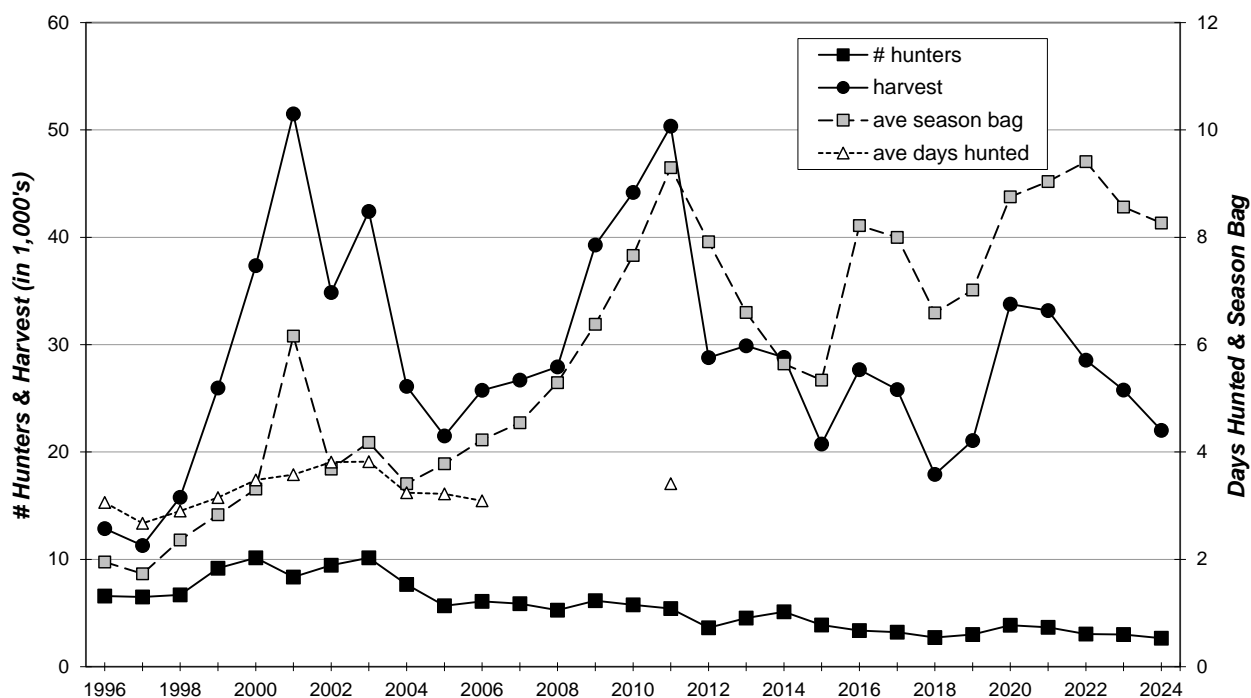
	Resident	Non Resident
<b>EARLY FALL CANADA GOOSE SEASON Licenses Sold *1*</b>	22,969	279
<b>Unique Licenseholders</b>	22,968	279
<b>Projected No. Early Fall Canada Goose Hunters</b>	2,428	237
Number Sampled by Survey	9,995	276
Number Responded to Survey	2,999	79
Responded and Participated in Season	<b>317</b>	<b>67</b>
Responded but DID NOT HUNT	2,682	12
<b>Survey Response Rate</b>	<b>30.0%</b>	<b>28.6%</b>
No. Hunters Reporting Early Fall Canada Goose Days	317	67
Total Reported Early Fall Canada Goose Hunted Days	UNK	221
<b>Average Days Hunted Canada Geese</b>	<b>UNK</b>	<b>3.30</b>
Total Reported Canada Geese Bagged	2,583	635
<b>Average Canada Goose Bag for Early Fall</b>	<b>8.15</b>	<b>9.48</b>
Projected Days Canada Goose Hunting Early Fall	UNK	780
Projected No. Early Fall Canada Goose Hunters	2,428	237
Projected Canada Goose Bag	19,782	2,243
<b>TOTAL CANADA GOOSE HARVEST EARLY FALL SEASON = 22,025</b>		
<b>Canada Goose Hunter Mean Satisfaction Score *2*</b>	4.71	5.13

\*1\* For residents: number of licenses based on # Migratory Bird Certificates in the 2024 database

For nonresidents: number of Nonresident Waterfowl licenses sold in database prior to Feb. 17, 2025

\*2\* Based on a scale of 1-7 with 1=very dissatisfied & 7=very satisfied

### EARLY FALL CANADA GOOSE HARVEST, 1996-2024



# **SPECIAL CANADA GOOSE**

The 2024 Special Unit Canada goose season was open from October 19 to December 22 in Bennett County. To hunt this resident-only season, hunters were required to hold small game, 1-day small game, senior or adult combination, or youth small game licenses plus a migratory bird certification, and for those hunters aged 16 and over, a federal waterfowl stamp. Additionally, hunters must have applied for and received a Special Canada goose license for that specific unit. Each license allowed the hunter to harvest 3 geese and individuals could have up to 3 licenses for the season, if licenses were left after the 2<sup>nd</sup> deadline drawing. A total of 132 hunters received multiple licenses for the 2024 season, including 72 hunters who received the maximum of 3 licenses each.

In 2024, there were 356 residents licensed to hunt the Special Canada goose season. All license holders who provided a valid email address when applying for their license were surveyed and 162 responses were received for a response rate of 46%.

From the survey responses, there were an estimated 492 Canada geese harvested for an average bag of 1.38 per license holder. Of the 162 hunters who responded to the survey, 69 (43%) indicated that they hunted during this season. When asked their satisfaction on the season, (1 being least satisfied, 7 being most satisfied), hunters reported an average rating of 5.03.

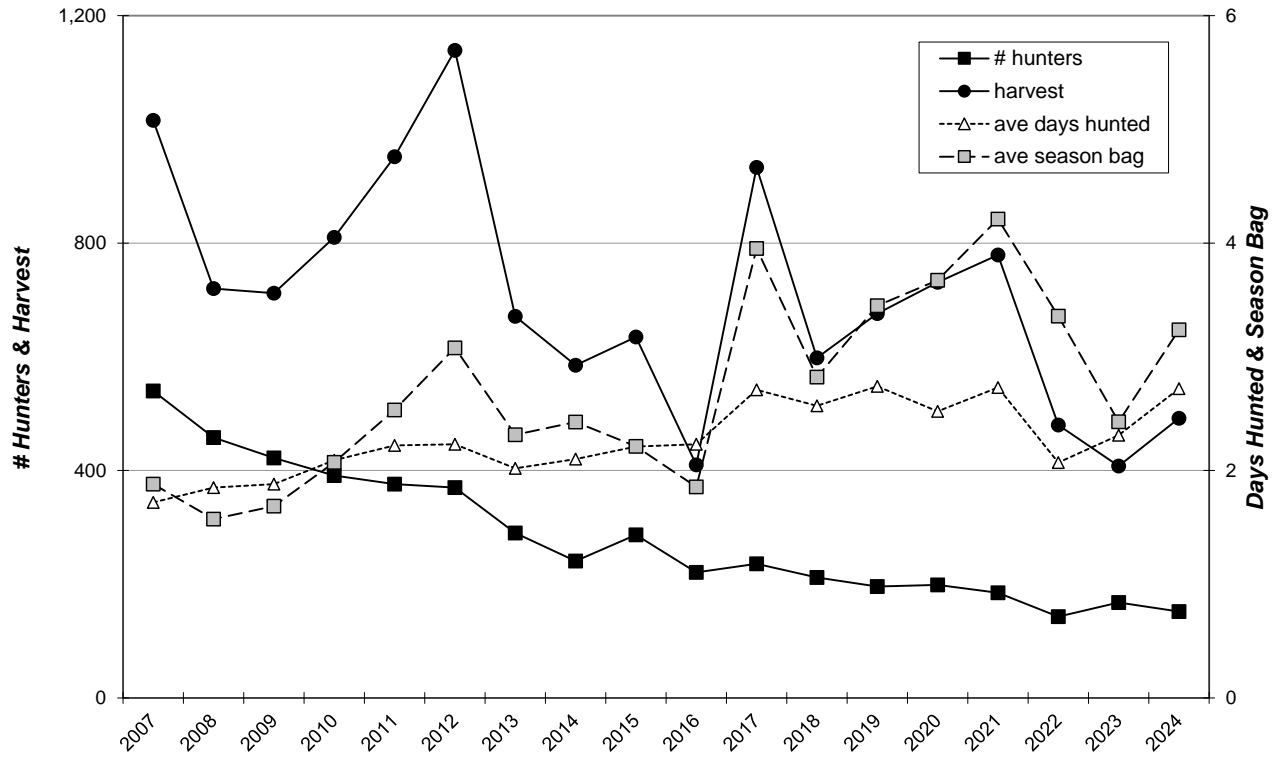
## **SPECIAL CANADA GOOSE HARVEST PROJECTIONS FOR 2024**

*Last Revised: 4 June 2025*

	<b>Resident</b>
<b>SPECIAL CANADA GOOSE SEASON Licenses Sold</b>	560
<b>Number Unique Licenseholders</b>	356
Number Sampled by Survey	356
Number Responded to Survey	162
Responded and Participated in Season	<b>69</b>
Responded but DID NOT HUNT	93
<b>Survey Response Rate</b>	<b>45.5%</b>
Total Reported Canada Goose Hunted Days	188
<b>Average Days Hunted Canada Geese</b>	<b>1.16</b>
Total Reported Canada Geese Bagged	224
<b>Average Canada Goose Bag for Season</b>	<b>1.38</b>
<b>Projected Days Canada Goose Hunting</b>	<b>413</b>
<b>Projected No. Canada Goose Hunters</b>	<b>152</b>
<b>Projected Canada Goose Bag</b>	<b>492</b>
Reported Geese shot but not retrieved	6
<b>Projected Geese shot but not retrieved</b>	<b>31</b>
<b>Special Canada Goose Hunter Mean Satisfaction Score *1*</b>	5.03
<b><i>TOTAL CANADA GOOSE HARVEST SPECIAL SEASON = 492</i></b>	

*\*1\* Based on scale of 1-7 with 1=very dissatisfied & 7=very satisfied*

### SPECIAL CANADA GOOSE HARVEST, 2007-2024



# **AUGUST MANAGEMENT TAKE** **CANADA GOOSE**

The 2024 Canada goose August Management Take was open for residents only from 17-31 August in Brown, Clark, Codington, Day, Deuel, Edmunds, Faulk, Grant, Hamlin, Marshall, McPherson, Roberts, and Spink counties, Meade County south of Highway 34, and Pennington County west of the Cheyenne River. The daily bag limit was 15 and there was no possession limit. To hunt geese, residents were required to hold a small game, 1-day small game, adult, or senior combination, or a youth small game license plus a migratory bird certification.

In 2024, there were 5,165 resident hunters licensed to hunt the Canada goose August Management Take. Approximately 97% (5,000) of the resident hunters were surveyed and 1,641 responded for a 33% rate.

There were a projected 985 license holders who hunted at least one day and harvested an estimated 11,350 Canada geese.

The five counties with the highest reported harvest were Day, Codington, Roberts, Marshall, and McPherson.

Summary comparison of the 2011-24 August Management Take Canada goose seasons

<b>Year</b>	<b>Hunters</b>	<b>Harvest</b>	<b>Average Days Hunted</b>	<b>Average Season Bag</b>
2011	3,211	30,300	2.74	9.44
2012	3,581	36,757	3.08	10.26
2013	2,345	18,592	3.42	7.93
2014	2,302	20,671	3.24	8.98
2015	1,686	10,221	3.03	6.06
2016-20*	Unk	Unk	Unk	Unk
2021	2,463	24,942	2.33	10.13
2022	1,603	14,094	2.47	8.79
2023	1,263	11,035	2.50	8.74
2024	985	11,350	2.58	11.52

\*The 2016-20 seasons were open only in Pennington County west of the Cheyenne River.

<b>August Management Take Canada Goose Harvest Distribution 2024</b>										
<b>Region</b>	<b>HUNTER DISTRIBUTION</b>				<b>HARVEST DISTRIBUTION</b>					
	<b># Reported</b>	<b># Projected</b>	<b>% of Total</b>	<b># Proj w/ Unk*</b>	<b># Reported</b>	<b># Projected</b>	<b>Birds/Hunter**</b>	<b>% of Total</b>	<b># Proj w/ Unk*</b>	<b>CI (95%)</b>
Marshall, Roberts, Day, Deuel, Hamlin, Clark, Codington and Grant counties	221	696	70.6	696	2,825	8,892	12.8	78.3	8,892	+/-1,661
Brown, Edmunds, Faulk, McPherson, and Spink counties	85	268	27.2	268	729	2,295	8.6	20.2	2,295	+/-650
Pennington and Meade counties	7	22	2.2	22	52	164	7.4	1.4	164	+/-144
<b>TOTALS:</b>	<b>313</b>	<b>985</b>	<b>100%</b>	<b>985</b>	<b>3,606</b>	<b>11,350</b>	<b>11.52</b>	<b>100%</b>	<b>11,350</b>	

Revised: 18 Oct 2024  
\* Includes unknown county projection values by assuming unknown county values are distributed the same as reported county values. Total values may be different due to rounding.  
\*\* Calculation uses "# projected" values without correction for unknown/unreported county values.

**AUGUST TAKE CANADA GOOSE HARVEST FOR 2024**

Last Revised: 18 Oct 2024

	Resident
<b>AUGUST CANADA GOOSE MGT TAKE Licenses Sold *4*</b>	5,165
<b>Projected No. August Mgt Take Hunters</b>	<b>985</b>
Number Sampled by Survey	5,000
Number Responded to Survey	1,641
Responded and Participated in Season	<b>313</b>
Responded but DID NOT HUNT	1,328
<b>Survey Response Rate</b>	<b>32.8%</b>
No. Hunters Reporting August Canada Goose Days	313
Total Reported August Canada Goose Hunted Days	809
<b>Average Days Hunted Canada Geese</b>	<b>2.58</b>
Total Reported Canada Geese Bagged	3,606
Total Reported Canada Geese Shot but not Retrieved	122
<b>Projected Canada Geese Shot but not Retrieved</b>	<b>384</b>
<b>Average Canada Goose Bag for August Take</b>	<b>11.52</b>
<b>Projected Days Canada Goose Hunting August Take</b>	<b>2,546</b>
<b>Projected No. August Take Canada Goose Hunters</b>	<b>985</b>
<b>Projected Canada Goose Bag</b>	<b>11,350</b>
<b>TOTAL CANADA GOOSE HARVEST AUGUST TAKE = 11,350</b>	
<b>95% CI: +/-1,799</b>	

\*4\* Numbers of resident licenses sold are based on the number of migratory bird certificates in the 2024 database purchased prior to August 26

Year	Season Dates	Counties Open to Hunting
2010	Aug 14-29	Brookings, Clark, Codington, Day, Deuel, Hamlin, Grant, Kingsbury, Lake, McCook, Marshall, Miner, Minnehaha, Moody, Roberts
2011	Aug 13-28	Brookings, Clark, Codington, Day, Deuel, Hamlin, Hanson, Grant, Kingsbury, Lincoln, Lake, McCook, Marshall, Miner, Minnehaha, Moody, Roberts, Union
2012	Aug 4-26	Brookings, Brown, Clark, Codington, Day, Deuel, Hamlin, Hanson, Hutchinson, Grant, Kingsbury, Lake, Lincoln, McCook, Marshall, Miner, Minnehaha, Moody, Roberts, Spink, Turner, Union
2013	Aug 3-31	Brookings, Brown, Clark, Codington, Day, Deuel, Hamlin, Hanson, Hutchinson, Grant, Kingsbury, Lake, Lincoln, McCook, Marshall, Miner, Minnehaha, Moody, Pennington, Roberts, Spink, Turner, Union
2014	Aug 16-31	Brookings, Brown, Clark, Codington, Day, Deuel, Hamlin, Hanson, Hutchinson, Grant, Kingsbury, Lake, Lincoln, McCook, Marshall, Miner, Minnehaha, Moody, Pennington, Roberts, Spink, Turner, Union
2015	Aug 15-31	Brookings, Brown, Clark, Codington, Day, Deuel, Hamlin, Hanson, Hutchinson, Grant, Kingsbury, Lake, Lincoln, McCook, Marshall, Miner, Minnehaha, Moody, Roberts, Spink, Turner, Union, Pennington west of the Cheyenne River
2016-20	Varied	Pennington County west of the Cheyenne River
2021	Aug 21-31	Aurora, Bon Homme, Beadle, Brookings, Brown, Clark, Clay, Codington, Davison, Day, Deuel, Edmunds, Faulk, Grant, Hamlin, Hanson, Hutchinson, Jerauld, Kingsbury, Lake, Lincoln, McCook, McPherson, Marshall, Miner, Minnehaha, Moody, Roberts, Sanborn, Spink, Turner, Union, Yankton, Pennington west of the Cheyenne River
2022	Aug 20-31	Aurora, Bon Homme, Beadle, Brookings, Brown, Clark, Clay, Codington, Davison, Day, Deuel, Edmunds, Faulk, Grant, Hamlin, Hanson, Hutchinson, Jerauld, Kingsbury, Lake, Lincoln, McCook, McPherson, Marshall, Miner, Minnehaha, Moody, Roberts, Sanborn, Spink, Turner, Union, Yankton, Pennington west of the Cheyenne River
2023	Aug 19-31	Aurora, Bon Homme, Beadle, Brookings, Brown, Clark, Clay, Codington, Davison, Day, Deuel, Edmunds, Faulk, Grant, Hamlin, Hanson, Hutchinson, Jerauld, Kingsbury, Lake, Lincoln, McCook, McPherson, Marshall, Miner, Minnehaha, Moody, Roberts, Sanborn, Spink, Turner, Union, Yankton, Pennington west of the Cheyenne River
2024	Aug 17-31	Brown, Clark, Codington, Day, Deuel, Edmunds, Faulk, Grant, Hamlin, Marshall, McPherson, Roberts, Spink, Meade south of Highway 34, Pennington west of the Cheyenne River

## **LIGHT GEESE (regular season)**

Information provided in this section pertains only to the regular light goose season in South Dakota. The next section reports on the Spring Conservation Order.

The 2024 light goose season was open from 28 September -10 January statewide and included snow, blue, and Ross' geese and all other geese except Canada geese, brant and white-fronted geese. The daily bag was 50 geese with an unlimited season possession limit. To hunt geese, residents were required to hold small game, 1-day small game, adult or senior combination, or youth small game licenses plus a migratory bird certification. Nonresidents were required to obtain a nonresident waterfowl license plus a migratory bird certification. All hunters aged 16 and over were also required to obtain a federal waterfowl stamp.

In 2024, there were an estimated 3,401 hunters who hunted at least one day for light geese during the regular season (2,558 residents, 844 nonresidents). The projected harvest was 68,370 light geese (57,814 by residents, 10,556 by nonresidents).

When asked their satisfaction on the season, (1 being least satisfied, 7 being most satisfied), those respondents who reported hunting at least one day for light geese reported an average rating of 4.79 for residents and 5.11 for nonresidents. The average days hunted by all hunters (6.35 residents, 4.05 for nonresidents) projects to a total of 19,964 recreation days for the season.

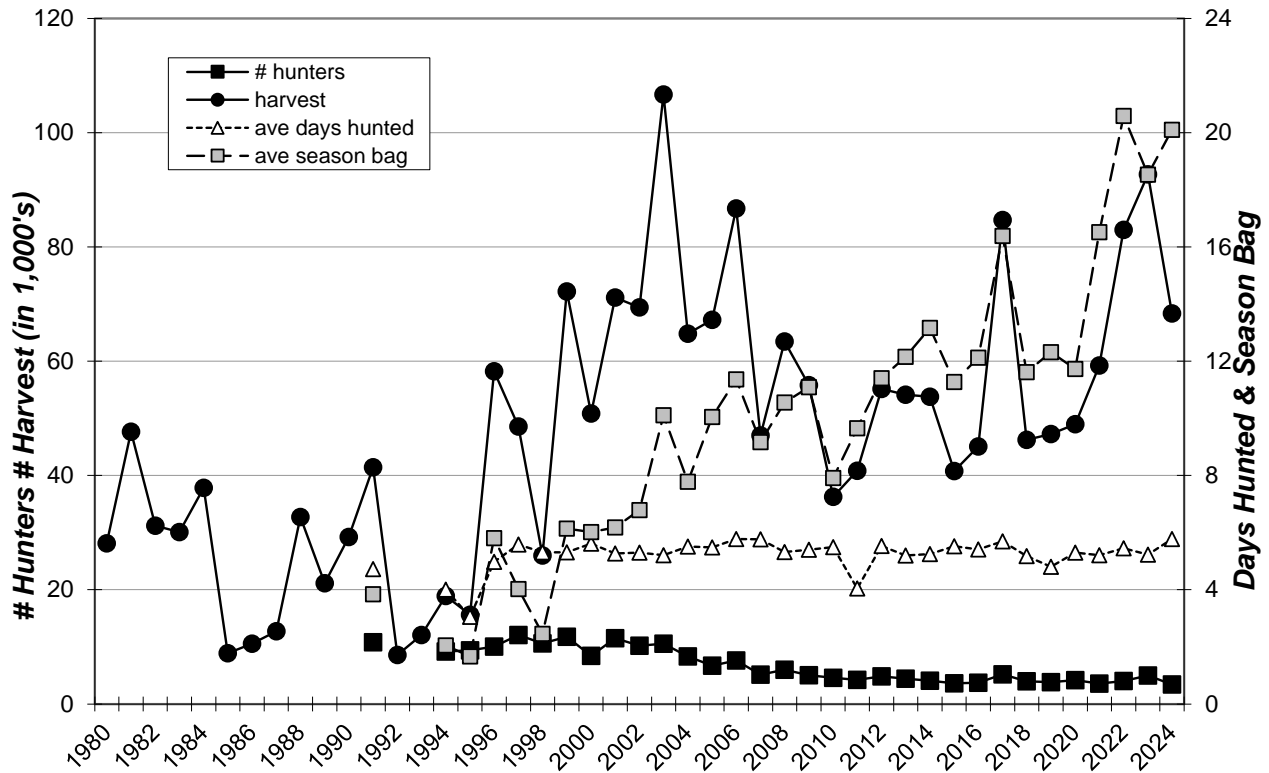
### Comparison of the 2015 - 2024 regular season light goose harvests

Year	Residents					Nonresidents				
	Number Hunters	Harvest	Ave Day Hunted	Ave Bag	Satisfaction	Number Hunters	Harvest	Ave Day Hunted	Ave Bag	Satisfaction
2015	3,096	37,266	5.66	12.04	4.78	519	3,492	4.71	6.72	4.83
2016	3,206	39,841	5.41	12.43	4.85	515	5,263	5.40	10.22	4.77
2017	4,159	70,772	6.05	17.02	5.09	1,013	13,972	4.27	13.80	5.22
2018	3,099	39,624	5.40	12.79	4.93	883	6,644	4.39	7.53	4.85
2019	3,060	41,524	4.85	13.57	5.18	774	5,714	4.61	7.38	5.55
2020	3,415	43,499	5.61	12.74	5.17	761	5,473	3.92	7.20	5.27
2021	2,799	50,282	5.51	17.97	5.26	788	8,980	4.15	11.40	5.38
2022	3,182	72,756	5.83	22.87	5.06	852	10,267	4.01	12.05	5.64
2023	3,781	74,048	5.64	19.58	5.13	1,224	18,692	3.97	15.27	5.58
2024	2,558	57,814	6.35	22.60	4.79	844	10,556	4.05	12.51	5.11

<b>REGULAR SEASON LIGHT GOOSE HARVEST PROJECTIONS FOR 2024</b>										
<small>Revised: 27 May 2025</small>										
	NONRESIDENT TOTALS BY UNIT								NR Totals	Resident Total
	00A	00B	11A	00V	00X	00Y	00Z	YW1		
<b>Regular Season:</b>										
No. Hunters Reporting Light Goose Days	26	258	0	30	7	15	13		349	334
Total Reported Light Goose Hunted Days	152	1,123	0	73	17	47	35		1,447	2,121
<b>Average Days Hunted Light Geese</b>	<b>5.85</b>	<b>4.35</b>		<b>2.43</b>	<b>2.43</b>	<b>3.13</b>	<b>2.69</b>		<b>4.05</b>	<b>6.35</b>
Total Reported Light Geese Bagged	469	3,587	0	231	26	31	134		4,478	7,549
<b>Average Light Goose Bag for Season</b>	<b>18.04</b>	<b>13.90</b>		<b>7.70</b>	<b>3.71</b>	<b>2.07</b>	<b>10.31</b>		<b>12.51</b>	<b>22.60</b>
<b>Projected Days Light Goose Hunting</b>	<b>354</b>	<b>2,552</b>	<b>0</b>	<b>234</b>	<b>59</b>	<b>115</b>	<b>106</b>		<b>3,420</b>	<b>16,244</b>
<b>Projected No. Light Goose Hunters</b>	<b>61</b>	<b>586</b>	<b>0</b>	<b>96</b>	<b>24</b>	<b>37</b>	<b>39</b>		<b>844</b>	<b>2,558</b>
<b>Projected Light Goose Bag</b>	<b>1,091</b>	<b>8,150</b>	<b>0</b>	<b>742</b>	<b>90</b>	<b>76</b>	<b>406</b>		<b>10,556</b>	<b>57,814</b>
<b>TOTAL LIGHT GOOSE HARVEST REGULAR SEASON = 68,370</b>										
<b>Light Goose Hunter Mean Satisfaction Score *1*</b>	4.96	5.19		4.43	5.71	4.47	5.91		5.11	4.79

\*1\* Based on scale of 1-7 with 1=very dissatisfied & 7=very satisfied

**STATEWIDE REGULAR SEASON LIGHT GOOSE HARVEST, 1980-2024**



# **LIGHT GOOSE CONSERVATION ORDER**

Information provided in this section pertains only to the Spring Light Goose Conservation Order in South Dakota. The previous section reported only on the regular season.

The 2024 Light Goose Conservation Order covered 19 February - 15 May statewide. The daily bag and possession limits were unlimited. To hunt light geese, residents were required to hold a small game, 1-day small game, adult or senior combination, or youth small game license plus a migratory bird certification. Nonresidents were required to obtain a nonresident Spring Light Goose or a nonresident Youth Spring Light Goose license. Hunters were not required to possess a federal waterfowl stamp to participate in the conservation order.

Harvest surveys were sent to both resident and nonresident hunters. In 2024, there were a projected 7,902 license holders who hunted at least one day for light geese during the conservation order dates (3,673 residents, 4,229 nonresidents). From the survey responses, there were a projected total of 228,546 light geese harvested.

Of those that reported hunting the Conservation Order during the previous five years, 9% of residents and 49% of nonresidents reported using a professional guide during the most recent season they hunted.

The average days hunted projected to a total of 42,717 recreation days for the conservation order. Hunters in Brown, Beadle, Clark, Edmunds, and Kingsbury counties had the highest reported harvest, accounting for 47% of the total estimate.

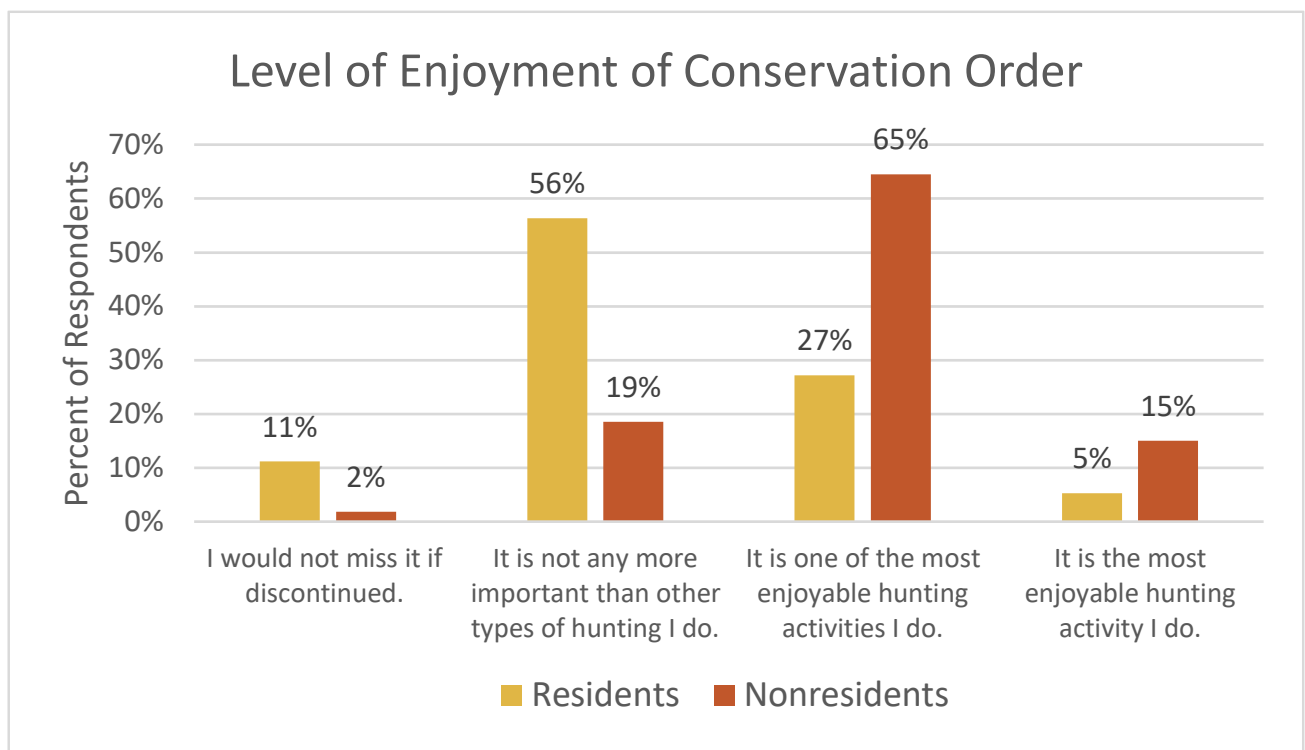
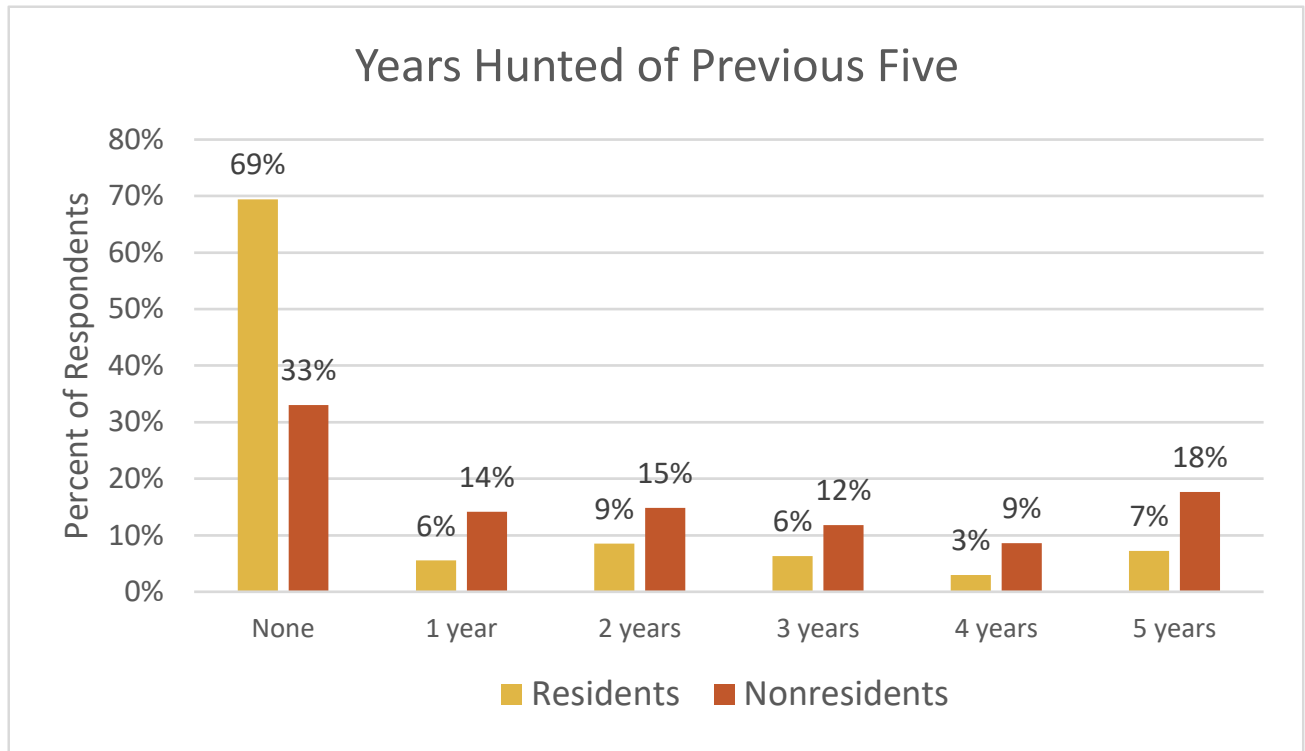
## Comparison of the 2015 - 2024 Conservation Order light goose statistics

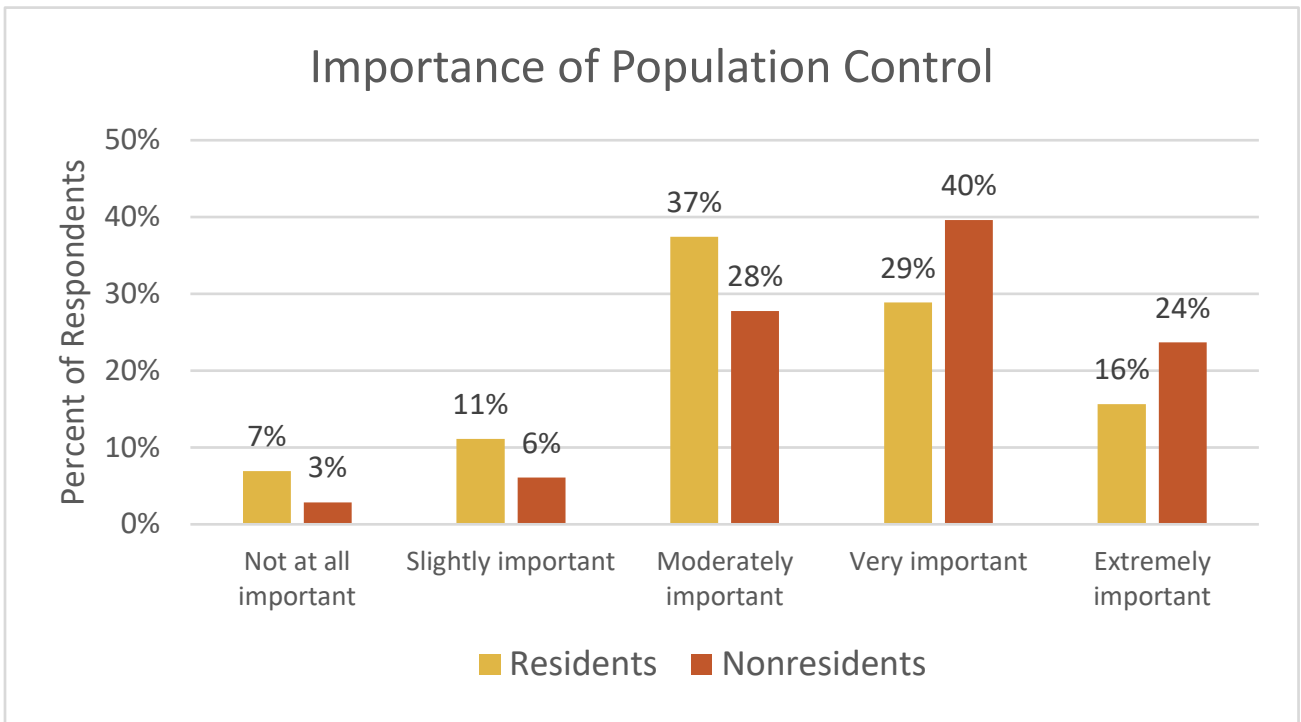
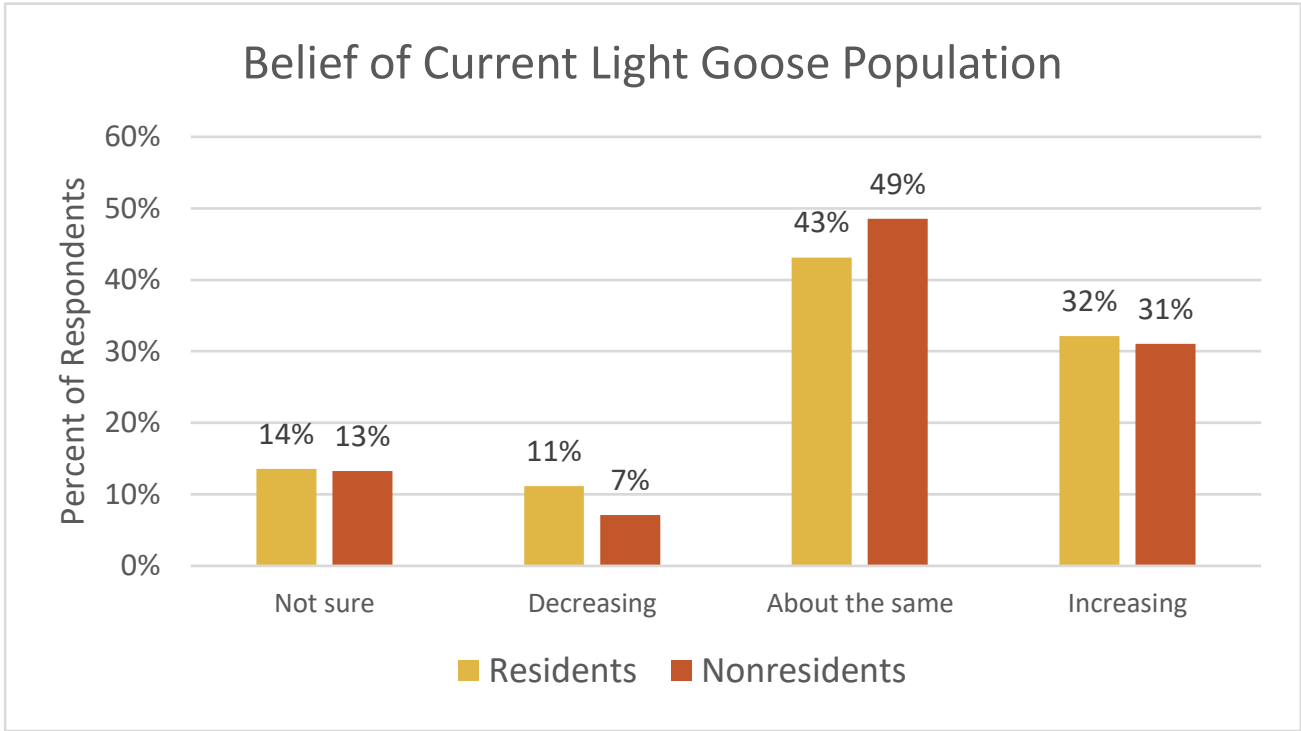
Year	Residents			Nonresidents		
	Number Hunters	Harvest	Total Days Hunted	Number Hunters	Harvest	Total Days Hunted
2015	2,147	53,046	12,402	4,277	112,285	16,569
2016	1,866	36,572	9,485	3,843	89,627	15,076
2017	2,672	56,683	16,068	4,448	124,777	17,559
2018	2,736	51,260	14,029	4,643	114,819	18,548
2019	1,413	31,475	6,976	2,700	49,219	9,490
2020	2,078	31,164	11,197	2,830	65,682	11,498
2021	1,755	32,553	9,144	4,446	95,776	17,870
2022	2,101	51,071	10,856	4,329	118,576	17,610
2023	3,537	61,751	14,497	3,688	102,820	13,856
2024	3,673	106,853	24,316	4,229	121,692	18,401

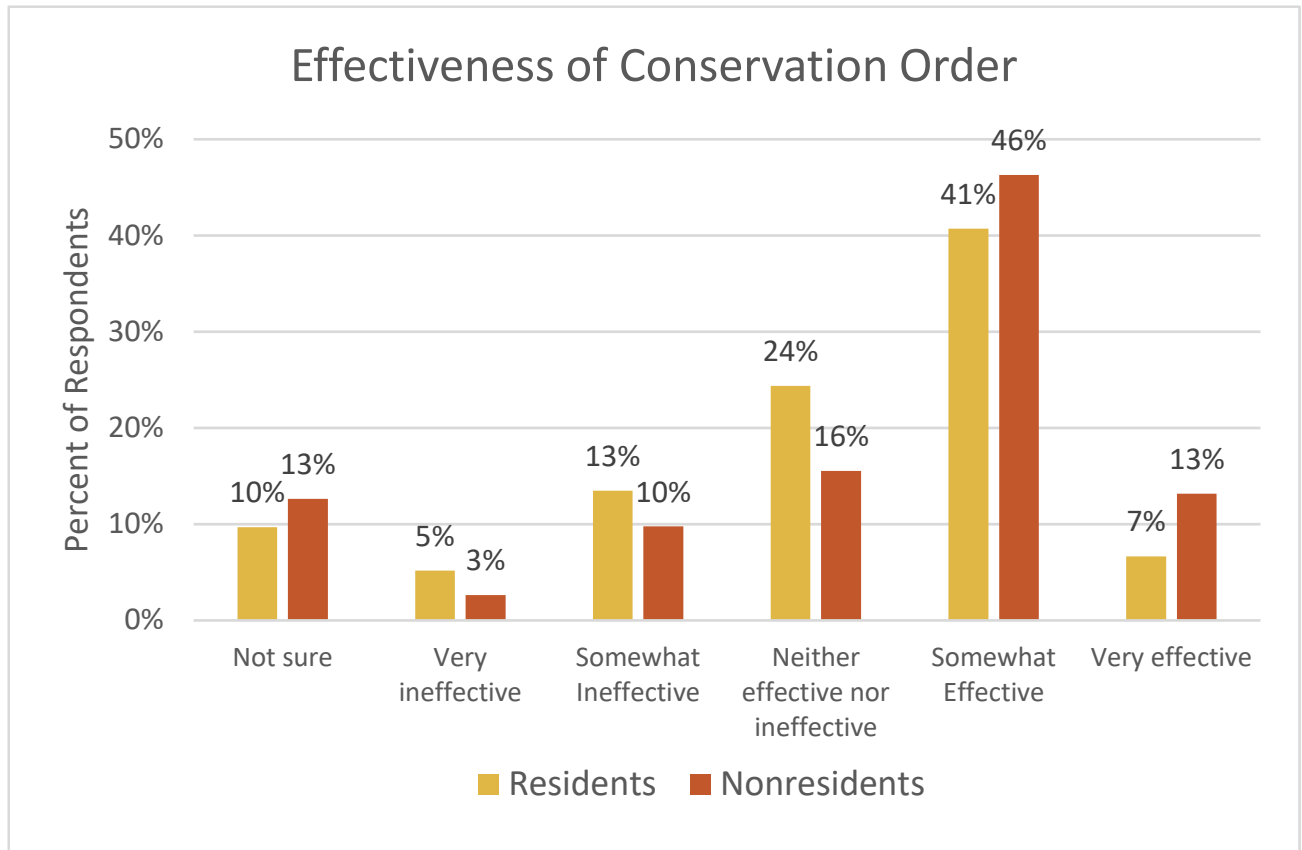
## **SPRING LIGHT GOOSE HARVEST FOR 2024**

Last Revised: 28 Aug 2024

	Resident	Nonresident
<b>CONSERVATION ORDER LIGHT GOOSE Licenses Sold *3*</b>	24,327	4,364
<b>Projected ACTIVE CONS ORDER LIGHT GOOSE HUNTERS</b>	<b>3,673</b>	<b>4,229</b>
Number Sampled for Survey	7,969	3,726
Number Responded to Survey	2,179	1,196
Responded and Participated in Season	<b>329</b>	<b>1,159</b>
Responded but DID NOT HUNT	1,850	37
<b>Survey Response Rate</b>	<b>27.3%</b>	<b>32.1%</b>
<b>TOTAL LIGHT GOOSE HARVEST CONSERVATION ORDER = 228,546</b>		
<b>Late Season (Conservation Order) 2/19 - 3/10 Period:</b>		
No. Hunters Reporting Light Goose Days	228	443
Total Reported Light Goose Hunted Days	983	1,581
<b>Average Days Hunted Light Geese</b>	<b>4.31</b>	<b>3.57</b>
Total Reported Light Geese Bagged	3,591	8,177
<b>Average Light Goose Bag for Season</b>	<b>15.75</b>	<b>18.46</b>
<b>Projected Days Light Goose Hunting</b>	<b>10,975</b>	<b>5,769</b>
<b>Projected No. Light Goose Hunters</b>	<b>2,545</b>	<b>1,616</b>
<b>Projected Light Goose Bag</b>	<b>40,091</b>	<b>29,836</b>
<b>TOTAL LIGHT GEESE HARVESTED 2/19 - 3/10 = 69,927</b>		
<b>Late Season (Conservation Order) 3/11 - 5/15 Period:</b>		
No. Hunters Reporting Light Goose Days	220	855
Total Reported Light Goose Hunted Days	1,195	3,462
<b>Average Days Hunted Light Geese</b>	<b>5.43</b>	<b>4.05</b>
Total Reported Light Geese Bagged	5,980	25,174
<b>Average Light Goose Bag for Season</b>	<b>27.18</b>	<b>29.44</b>
<b>Projected Days Light Goose Hunting</b>	<b>13,341</b>	<b>12,632</b>
<b>Projected No. Light Goose Hunters</b>	<b>2,456</b>	<b>3,120</b>
<b>Projected Light Goose Bag</b>	<b>66,762</b>	<b>91,856</b>
<b>TOTAL LIGHT GEESE HARVESTED 3/11 - 5/15 = 158,618</b>		
Reported Geese bagged over decoys	6,932	30,506
<b>Projected Geese bagged over decoys</b>	<b>77,391</b>	<b>111,311</b>
<b>Total bagged over decoys = 188,702</b>		
Reported Geese shot but not retrieved	305	773
<b>Projected Geese Shot but Not Retrieved</b>	<b>3,405</b>	<b>2,821</b>
<b>Total not retrieved = 6,226</b>		
*3* Numbers of resident licenses sold are based on the number of 2023 migratory bird certificates in the database purchased prior to May 1, 2024		







# WHITE-FRONTED GEESE

The 2024 white-fronted goose season was open from 28 September - 10 December statewide. The daily bag limit was 3 geese, and the season possession limit was 9. To hunt white-fronted geese, residents were required to hold small game, 1-day small game, adult or senior combination, or youth small game licenses plus a migratory bird certification. Nonresidents were required to obtain a nonresident waterfowl license plus a migratory bird certification. All hunters aged 16 and over were also required to obtain a federal waterfowl stamp.

Harvest surveys were sent to both resident and nonresident hunters. There were a projected 2,269 hunters who hunted at least one day for white-fronted geese (1,662 residents, 608 nonresidents). There were a projected 5,821 white-fronted geese harvested (4,687 by residents and 1,134 by nonresidents).

## Comparison of the 2020 - 2024 white-fronted goose harvests

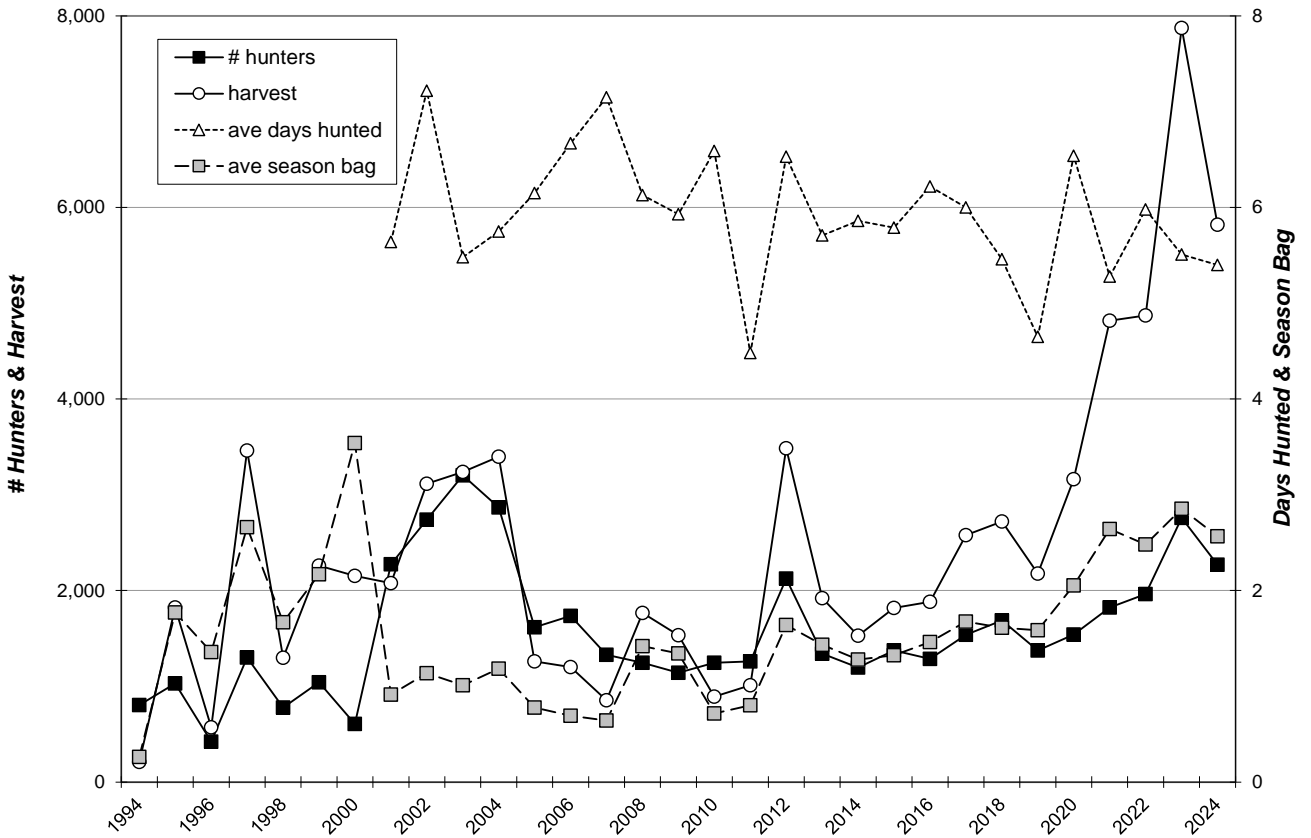
Year	Residents				Nonresidents			
	Number Hunters	Harvest	Ave Days Hunted	Ave Bag, Season	Number Hunters	Harvest	Ave Days Hunted	Ave Bag, Season
2020	1,256	2,804	7.05	2.23	283	359	4.26	1.27
2021	1,358	3,748	5.61	2.76	466	1,071	4.33	2.30
2022	1,494	3,939	6.64	2.64	470	935	3.88	1.99
2023	2,117	6,392	5.92	3.02	642	1,484	4.14	2.31
2024	1,662	4,687	6.00	2.82	608	1,134	3.75	1.87

### WHITE-FRONTED GOOSE HARVEST PROJECTIONS FOR 2024

Revised: 27 May 2025

	NONRESIDENT TOTALS BY UNIT								NR Totals	Resident Total
	00A	00B	11A	00V	00X	00Y	00Z	YW1		
No. Hunters Reporting White-fronted Goose Days	13	182	0	26	8	14	6		249	217
Total Reported White-fronted Goose Hunted Days	92	736	0	56	17	40	19		960	1,301
<b>Average Days Hunted White-fronted Geese</b>	<b>7.08</b>	<b>4.04</b>		<b>2.15</b>	<b>2.13</b>	<b>2.86</b>	<b>3.17</b>		<b>3.75</b>	<b>6.00</b>
Total Reported White-fronted Geese Bagged	11	377	0	41	15	8	16		468	612
<b>Average White-fronted Goose Bag for Season</b>	<b>0.85</b>	<b>2.07</b>		<b>1.58</b>	<b>1.88</b>	<b>0.57</b>	<b>2.67</b>		<b>1.87</b>	<b>2.82</b>
Projected Days White-fronted Hunting	214	1,672	0	180	59	98	58		2,281	9,964
Projected No. White-fronted Goose Hunters	30	414	0	83	28	34	18		608	1,662
Projected White-fronted Goose Bag	26	857	0	132	52	20	48		1,134	4,687
<b>TOTAL WHITE-FRONTED GOOSE HARVEST = 5,821</b>										

### STATEWIDE WHITE-FRONTED GOOSE HARVEST, 1994-2024



NOTE: Prior to 2001, the definition of a white-fronted goose hunter was one who bagged 1+ white-front. Starting in 2001, the definition was changed to a hunter who spent 1+ days hunting white-fronted geese. This definition increased the number of hunters and decreased the average season bag estimates, but not the overall harvest projections.

## 2024 Harvest Survey Response Rates

	Overall Response	Proportion	
		Internet	Mail-return
Sage Grouse	NA	NA	NA
August Canada Goose	33.0%	100%	0.0%
Migratory Bird	30.0%	100%	0.0%
Nonresident Early Fall Canada Goose	29.0%	100%	0.0%
Nonresident Waterfowl	40.8%	100%	0.0%
Nonresident Small Game	30.1%	100%	0.0%
Resident Small Game	26.9%	100%	0.0%
Special Canada Goose	45.3%	100%	0.0%
Spring Light Goose	28.9%	100%	0.0%
Tundra Swan	54.3%	100%	0.0%

\*Note: Due to late responses received through the Internet, final response rates may be higher than those reported in previous sections. Late responses were not included in data summaries or analyses.