

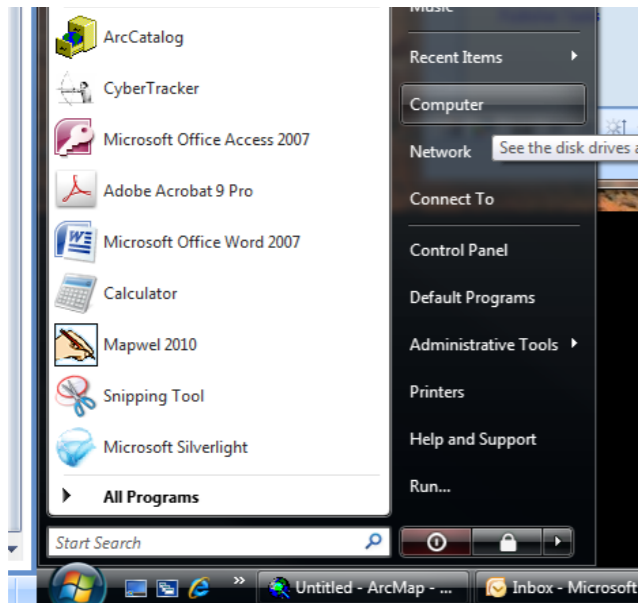
# Garmin NUVI troubleshooting:

**Problem:** My Nuvi will not display the uploaded map.

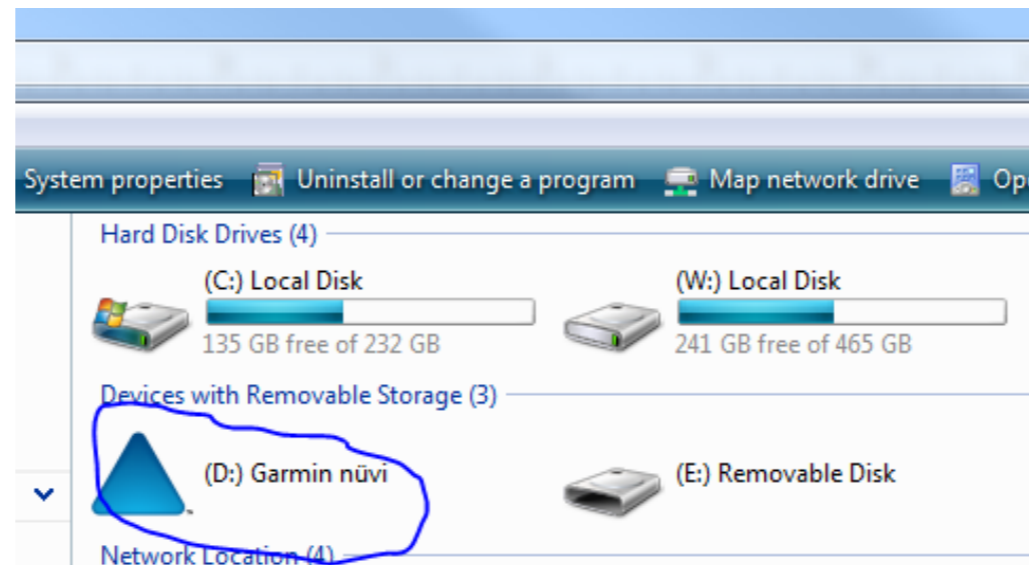
**Solution 1:** Check make sure the map has been installed.

1. Plug Nuvi into computer
2. Click My Computer
3. From My computer select and double-click the Garmin nuvi drive
4. If the map upload was successful then there should be a "Map" folder in your Garmin
5. Double-click the "Map" Folder and you should see one file in the folder named gmap-supp.img or just gmapsupp.
6. If the file is not there than the map did not successfully upload to the unit. (refer to installation instructions to upload the map)
7. If the file is there, the map successfully uploaded but you may need to turn off the existing road map for it to display correctly. (see solution 2)

Step 2.



Step 3.



Step 4.

Name	Date modified	Type	Size
.System	6/12/2009 9:50 AM	File Folder	
Garmin	9/29/2010 2:07 PM	File Folder	
GPX	9/29/2010 2:09 PM	File Folder	
help	6/20/2009 5:59 PM	File Folder	
JPEG		File Folder	
keyboards	6/20/2009 5:59 PM	File Folder	
Map	9/29/2010 8:49 AM	File Folder	
Screenshot	9/29/2010 10:01 AM	File Folder	
Text	6/20/2009 6:00 PM	File Folder	
Vehicle		File Folder	
Voice	5/27/2010 9:32 PM	File Folder	
.VolumeIcon.icns	5/6/2008 2:08 AM	ICNS File	117 KB
autorun.inf	4/14/2009 2:31 AM	Setup Information	1 KB
nuvi_drive.ico	9/12/2007 9:03 AM	Icon	25 KB

Step 4.

Name	Date modified	Type	Size
gmapsupp.img	9/24/2010 2:02 PM	IMG File	10,472 KB