

PHEASANT

The 2017 pheasant season was open from 21 October 2017 – 7 January 2018 statewide. There was also a Youth season open 7-11 October on public and private land and an early resident season open 14-16 October on public lands only. The daily limit was 3 cock pheasants, possession 15. To hunt pheasants, residents were required to hold small game, 1-day small game, adult, senior or junior combination, or youth small game licenses; nonresidents were required to obtain adult or youth small game or nonresident shooting preserve licenses. Harvest surveys were sent to both resident and nonresident hunters. No shooting preserve license holders were surveyed and none of their harvest is included in any of the data in this report.

In 2017, there were 84,754 resident and 70,316 nonresident licenses issued that allowed holders to hunt pheasants. Approximately 10% of residents and nonresidents were surveyed for the upland bird seasons. Survey response rates were 61% for residents and 62% for nonresidents.

Based on survey responses indicating at least one day of hunting pheasants, there were a projected 52,538 resident and 67,232 nonresident pheasant hunters.

A projected total of 828,709 pheasants were harvested (326,936 by residents, 501,773 by nonresidents) during the 2017 seasons. When asked their satisfaction on the season, (1 being least satisfied, 7 being most satisfied), resident upland bird hunters reported an average satisfaction rating of 4.23 while nonresidents reported a higher satisfaction rating of 5.06.

Approximately 9,755 residents participated in the early, resident-only season. The projected harvest for this season was 12,342 birds.

The Youth-only season overall participation rate was approximately 3.3%; nonresidents were not surveyed on their participation in this season.

The five counties with the highest reported harvests from highest to lowest were Brown, Tripp, Brule, Spink, and Beadle.

Comparison of the 2008 - 2017 Pheasant season statistics

Year	<i>Resident Hunters</i>					<i>Nonresident Hunters</i>				
	<i>Number Hunters</i>	<i>Harvest</i>	<i>Ave Day Hunted</i>	<i>Ave Bag</i>	<i>Satis-faction</i>	<i>Number Hunters</i>	<i>Harvest</i>	<i>Ave Day Hunted</i>	<i>Ave Bag</i>	<i>Satis-faction</i>
2008	75,978	877,546	7.33	11.55	5.31	100,254	1,058,682	4.49	10.56	5.86
2009	69,949	715,578	7.14	10.23	4.93	97,350	932,613	4.33	9.58	5.59
2010	72,465	803,637	7.16	11.09	5.20	100,189	1,027,939	4.42	10.26	5.88
2011	69,120	644,412	6.83	9.68	4.78	95,077	910,894	4.46	9.63	5.63
2012	69,240	599,675	6.92	9.09	4.65	93,801	829,198	4.35	8.90	5.14
2013	57,647	368,567	6.33	7.15	4.11	74,413	561,445	3.99	7.74	4.95
2014	61,776	504,144	6.31	8.32	4.85	79,195	695,660	4.16	8.79	5.52
2015	65,135	517,942	6.17	8.06	4.98	84,901	737,936	4.15	8.71	5.49
2016	61,746	478,099	6.24	7.86	4.72	81,141	692,497	4.14	8.57	5.43
2017	52,538	326,936	6.08	6.30	4.23	67,232	501,773	3.96	7.47	5.06

UPLAND BIRD HARVEST PROJECTIONS FOR 2017

Revised: 27 April 2018

	RESIDENT TOTALS BY LICENSE TYPE						NONRESIDENT TOTALS		
	Small Game	Combo	Senior Combo	Junior Combo	Youth SmGm	Sum Estimates	Nonres Sm Game	Youth Sm Game	Sum Estimates
Licenses Sold	16,599	47,020	8,962	7,760	4,413	84,754	68,358	1,958	70,316
Projected ACTIVE UPLAND BIRD HUNTERS	13,494	28,291	4,393	3,642	3,355	53,175	65,865	1,757	67,622
Number Sampled by Survey	1,411	4,292	827	691	396	7,617	7,523	217	7,740
Number Responded to Survey	759	2,611	716	277	242	4,605	4,652	122	4,774
% Responded and Participated in Season	81%	60%	49%	47%	76%	62%	98%	91%	98%
Responded and Participated in Season	617	1,571	351	130	184	2,853	4,557	111	4,668
Responded but DID NOT HUNT	142	1,040	365	147	58	1,752	95	11	106
Survey Response Rate	53.8%	60.8%	86.6%	40.1%	61.1%	60.5%	61.8%	56.2%	61.7%
No. Hunters Reporting Pheasant Days	613	1,547	346	130	181	2,817	4,530	111	4,641
Sum Pheasant Hunted Days	3,269	9,993	2,186	682	990	17,120	17,985	383	18,368
Average Days Hunted Pheasants	5.33	6.46	6.32	5.25	5.47	6.08	3.97	3.45	3.96
Sum Pheasants Bagged	3,092	11,096	2,209	739	611	17,747	34,138	528	34,666
Average Pheasant Bag for Season	5.04	7.17	6.38	5.68	3.38	6.30	7.54	4.76	7.47
Projected Days Pheasant Hunting	71,492	179,958	27,362	19,106	18,053	315,970	259,947	6,062	266,010
Projected No. Pheasant Hunters	13,406	27,859	4,331	3,642	3,301	52,538	65,475	1,757	67,232
Projected Pheasant Bag	67,621	199,821	27,650	20,703	11,142	326,936	493,416	8,357	501,773
LCI (95%)	58,962	184,992	22,118	13,768	8,666	307,223	483,024	7,070	491,302
UCI (95%)	76,364	214,837	33,371	28,035	13,687	346,644	503,836	9,675	512,231
TOTAL PHEASANT HARVEST =							828,709		
LCI (95%) =							806,424		
UCI (95%) =							851,993		
RESIDENT-ONLY OPENING WEEKEND:									
No. Hunters Reporting Pheasant Days	105	282	74	26	43	530	-	-	-
Sum Pheasant Hunted Days	160	422	125	35	63	805	-	-	-
Average Days Hunted Pheasants	1.52	1.50	1.69	1.35	1.47	1.52	-	-	-
Sum Pheasants Bagged	118	401	91	37	20	667	-	-	-
Average Pheasant Bag for Weekend	1.12	1.42	1.23	1.42	0.47	1.26	-	-	-
Projected Days Pheasant Hunting	3,499	7,600	1,565	981	1,149	14,816	-	-	-
Projected No. Pheasant Hunters	2,296	5,078	926	728	784	9,755	-	-	-
Projected Pheasant Bag	2,581	7,221	1,139	1,037	365	12,342	-	-	-
RESIDENT-ONLY WEEKEND PHEASANT HARVEST =							12,342		
MENTORED YOUTH PARTICIPATION:									
No. Hunters Reporting Participation	23	98	15	NA	NA	136	-	-	-
Projected No. Hunters Participating	503	1,765	188			2,456	-	-	-
Percent Hunters Participating	3.0%	3.8%	2.1%			3.3%	-	-	-
Upland Bird Hunters Mean Satisfaction Score *	4.37	4.20	3.82	4.65	4.50	4.23	5.05	5.22	5.06

* Based on scale of 1-7 with 1="very dissatisfied" and 7="very satisfied"

RESIDENT-ONLY WEEKEND 2017 PHEASANT SEASON PARTICIPATION AND BAG				
Last Revised: 5 June 2018				
	# Days Hunted	# Responded	% of Total	Ave. Bag
Residents	0	4,074	88.5%	
	1	318	6.9%	0.74
	2	151	3.3%	1.68
	3	62	1.3%	2.90

2017 YOUTH-ONLY PHEASANT SEASON PARTICIPATION			
Last Revised: 5 June 2018			
License Type	Number Participated	Did Not Participate	Percent Participated
Small Game	28	731	3.7%
Combination	117	2,494	4.5%
Senior Combination	15	701	2.1%
Youth Small Game	39	203	16.1%
Junior Combination	10	267	3.6%
Total	209	4,396	4.5%

Total Pheasant Harvest Distribution by County 2017

COUNTY	HUNTER DISTRIBUTION			HARVEST DISTRIBUTION			Birds/Hunter **
	# Projected	% of Total	# Proj w/ Unk *	# Projected	% of Total	# Proj w/ Unk *	
Minnehaha	1,622	1.4	1,665	6,710	0.8	6,837	4.1
Pennington	271	0.2	279	899	0.1	916	3.3
Brown	7,274	6.2	7,438	56,116	6.9	57,131	7.7
Beadle	5,489	4.7	5,614	34,624	4.3	35,252	6.3
Codington	1,945	1.7	1,993	14,368	1.8	14,639	7.4
Brookings	1,831	1.6	1,878	7,241	0.9	7,377	4.0
Yankton	740	0.6	758	2,875	0.4	2,928	3.9
Davison	3,755	3.2	3,836	28,308	3.5	28,814	7.5
Lawrence	52	0.0	53	363	0.0	370	7.0
Aurora	4,023	3.4	4,113	31,891	3.9	32,465	7.9
Bennett	862	0.7	882	4,709	0.6	4,798	5.5
Bon Homme	611	0.5	627	3,952	0.5	4,025	6.5
Brule	5,755	4.9	5,877	44,096	5.4	44,878	7.7
Buffalo	257	0.2	263	1,667	0.2	1,697	6.5
Butte	215	0.2	221	1,125	0.1	1,147	5.2
Campbell	1,398	1.2	1,428	9,319	1.1	9,486	6.7
Charles Mix	3,965	3.4	4,055	32,926	4.0	33,521	8.3
Clark	2,294	2.0	2,346	13,768	1.7	14,015	6.0
Clay	634	0.5	650	3,819	0.5	3,890	6.0
Corson	698	0.6	715	4,016	0.5	4,091	5.8
Custer	89	0.1	91	774	0.1	788	8.7
Day	1,155	1.0	1,182	5,777	0.7	5,880	5.0
Deuel	737	0.6	755	4,766	0.6	4,853	6.5
Dewey	1,391	1.2	1,421	11,753	1.4	11,963	8.4
Douglas	1,340	1.1	1,371	7,962	1.0	8,106	5.9
Edmunds	3,052	2.6	3,121	22,237	2.7	22,641	7.3
Fall River	464	0.4	476	1,522	0.2	1,552	3.3
Faulk	2,927	2.5	2,991	20,558	2.5	20,925	7.0
Grant	549	0.5	563	2,084	0.3	2,124	3.8
Gregory	3,521	3.0	3,595	30,640	3.8	31,181	8.7
Haakon	957	0.8	981	4,662	0.6	4,749	4.9
Hamlin	1,154	1.0	1,183	5,103	0.6	5,197	4.4
Hand	2,563	2.2	2,619	16,042	2.0	16,325	6.3
Hanson	1,133	1.0	1,161	6,433	0.8	6,553	5.7
Harding	315	0.3	323	2,600	0.3	2,649	8.3
Hughes	3,667	3.1	3,751	24,470	3.0	24,913	6.7
Hutchinson	1,907	1.6	1,953	14,113	1.7	14,373	7.4
Hyde	1,062	0.9	1,085	7,793	1.0	7,931	7.3
Jackson	166	0.1	170	965	0.1	982	5.8
Jerauld	1,632	1.4	1,669	12,985	1.6	13,220	8.0
Jones	1,358	1.2	1,387	11,814	1.5	12,028	8.7
Kingsbury	1,966	1.7	2,015	13,465	1.7	13,718	6.8
Lake	1,376	1.2	1,411	9,120	1.1	9,292	6.6
Lincoln	736	0.6	755	3,199	0.4	3,260	4.3
Lyman	4,677	4.0	4,777	34,268	4.2	34,876	7.3
McCook	1,490	1.3	1,528	7,899	1.0	8,046	5.3
McPherson	1,902	1.6	1,942	12,630	1.6	12,853	6.6
Marshall	727	0.6	744	5,540	0.7	5,642	7.6
Meade	170	0.1	174	986	0.1	1,004	5.8
Mellette	292	0.2	298	1,861	0.2	1,894	6.4
Miner	2,581	2.2	2,642	19,175	2.4	19,526	7.4
Moody	553	0.5	568	2,459	0.3	2,505	4.4
Perkins	1,410	1.2	1,444	6,160	0.8	6,271	4.4
Potter	2,789	2.4	2,852	22,591	2.8	22,998	8.1
Roberts	932	0.8	956	6,087	0.7	6,201	6.5
Sanborn	2,212	1.9	2,263	15,134	1.9	15,408	6.8
Spink	4,470	3.8	4,569	35,353	4.3	35,989	7.9
Stanley	1,178	1.0	1,205	7,568	0.9	7,706	6.4
Sully	2,187	1.9	2,238	15,589	1.9	15,872	7.1
Tripp	6,293	5.4	6,425	49,194	6.0	50,060	7.8
Turner	1,133	1.0	1,162	5,048	0.6	5,142	4.5
Union	474	0.4	487	3,201	0.4	3,260	6.7
Walworth	2,363	2.0	2,416	16,598	2.0	16,898	7.0
Ziebach	240	0.2	246	2,251	0.3	2,294	9.4
Shannon	29	0.0	30	420	0.1	427	14.5
Todd	81	0.1	83	353	0.0	359	4.4
Unk/Unreported	2,678	-	-	14,719	-	-	5.5

TOTALS: 119,770 100% 119,770 828,709 100% 828,709 6.92

Last Revised: 5 June 2018

* Includes unknown county projection values by assuming unknown county values are distributed the same as reported county values. Total values may be different due to rounding.

** Calculation uses "# projected" values without correction for unknown/unreported county values.

Resident Pheasant Harvest Distribution by County 2017

COUNTY	HUNTER DISTRIBUTION				HARVEST DISTRIBUTION				Birds/Hunter **
	# Reported	# Projected	% of Total	# Proj w/ Unk *	# Reported	# Projected	% of Total	# Proj w/ Unk *	
Minnehaha	73	1,361	2.7	1,399	299	5,508	1.7	5,615	4.0
Pennington	13	242	0.5	249	37	682	0.2	695	2.8
Brown	157	2,928	5.7	3,009	1,206	22,217	6.9	22,647	7.6
Beadle	125	2,331	4.6	2,396	774	14,259	4.4	14,535	6.1
Codington	67	1,250	2.4	1,284	600	11,053	3.4	11,267	8.8
Brookings	71	1,324	2.6	1,361	276	5,084	1.6	5,183	3.8
Yankton	28	522	1.0	537	83	1,529	0.5	1,559	2.9
Davison	53	988	1.9	1,016	439	8,087	2.5	8,244	8.2
Lawrence	2	37	0.1	38	15	276	0.1	282	7.4
Aurora	79	1,473	2.9	1,514	595	10,961	3.4	11,173	7.4
Bennett	26	485	0.9	498	192	3,537	1.1	3,606	7.3
Bon Homme	25	466	0.9	479	143	2,634	0.8	2,685	5.6
Brule	74	1,380	2.7	1,418	537	9,893	3.1	10,084	7.2
Buffalo	6	112	0.2	115	19	350	0.1	357	3.1
Butte	10	187	0.4	192	54	995	0.3	1,014	5.3
Campbell	26	485	0.9	498	168	3,095	1.0	3,155	6.4
Charles Mix	86	1,604	3.1	1,648	714	13,153	4.1	13,408	8.2
Clark	50	933	1.8	958	250	4,606	1.4	4,695	4.9
Clay	27	504	1.0	518	135	2,487	0.8	2,535	4.9
Corson	25	466	0.9	479	141	2,598	0.8	2,648	5.6
Custer	4	75	0.1	77	31	571	0.2	582	7.7
Day	27	504	1.0	518	103	1,897	0.6	1,934	3.8
Deuel	24	448	0.9	460	111	2,045	0.6	2,084	4.6
Dewey	21	392	0.8	403	176	3,242	1.0	3,305	8.3
Douglas	33	615	1.2	633	158	2,911	0.9	2,967	4.7
Edmunds	65	1,212	2.4	1,246	540	9,948	3.1	10,140	8.2
Fall River	21	392	0.8	403	74	1,363	0.4	1,390	3.5
Faulk	49	914	1.8	939	331	6,098	1.9	6,216	6.7
Grant	24	448	0.9	460	99	1,824	0.6	1,859	4.1
Gregory	42	783	1.5	805	333	6,135	1.9	6,253	7.8
Haakon	35	653	1.3	671	158	2,911	0.9	2,967	4.5
Hamlin	44	821	1.6	843	167	3,076	1.0	3,136	3.7
Hand	45	839	1.6	863	166	3,058	1.0	3,117	3.6
Hanson	39	727	1.4	748	218	4,016	1.3	4,094	5.5
Harding	13	242	0.5	249	105	1,934	0.6	1,972	8.0
Hughes	84	1,567	3.1	1,610	530	9,764	3.0	9,953	6.2
Hutchinson	58	1,082	2.1	1,112	429	7,903	2.5	8,056	7.3
Hyde	15	280	0.5	288	104	1,916	0.6	1,953	6.8
Jackson	5	93	0.2	96	28	516	0.2	526	5.5
Jerauld	37	690	1.3	709	290	5,342	1.7	5,446	7.7
Jones	20	373	0.7	383	272	5,011	1.6	5,108	13.4
Kingsbury	72	1,343	2.6	1,380	540	9,948	3.1	10,140	7.4
Lake	59	1,100	2.2	1,131	378	6,964	2.2	7,098	6.3
Lincoln	34	634	1.2	652	143	2,634	0.8	2,685	4.2
Lyman	69	1,287	2.5	1,323	427	7,866	2.5	8,018	6.1
McCook	62	1,156	2.3	1,188	285	5,250	1.6	5,352	4.5
McPherson	22	410	0.8	422	134	2,469	0.8	2,516	6.0
Marshall	18	336	0.7	345	175	3,224	1.0	3,286	9.6
Meade	6	112	0.2	115	26	479	0.1	488	4.3
Mellette	4	75	0.1	77	24	442	0.1	451	5.9
Miner	77	1,436	2.8	1,476	538	9,911	3.1	10,103	6.9
Moody	25	466	0.9	479	95	1,750	0.5	1,784	3.8
Perkins	43	802	1.6	824	134	2,469	0.8	2,516	3.1
Potter	61	1,138	2.2	1,169	439	8,087	2.5	8,244	7.1
Roberts	36	671	1.3	690	222	4,090	1.3	4,169	6.1
Sanborn	58	1,082	2.1	1,112	343	6,319	2.0	6,441	5.8
Spink	82	1,529	3.0	1,572	658	12,122	3.8	12,356	7.9
Stanley	29	541	1.1	556	212	3,905	1.2	3,981	7.2
Sully	59	1,100	2.2	1,131	374	6,890	2.1	7,023	6.3
Tripp	71	1,324	2.6	1,361	446	8,216	2.6	8,375	6.2
Turner	46	858	1.7	882	186	3,427	1.1	3,493	4.0
Union	20	373	0.7	383	96	1,769	0.6	1,803	4.7
Walworth	49	914	1.8	939	340	6,264	2.0	6,385	6.9
Ziebach	9	168	0.3	173	90	1,658	0.5	1,690	9.9
Shannon	0	0	0.0	0	0	0	0.0	0	0
Todd	2	37	0.1	38	5	92	0.0	94	2.5
Unk/Unreported	76	1,417	-	-	337	6,208	-	-	4.4
TOTALS:	2,817	52,538	100%	52,538	17,747	326,936	100%	326,936	6.22

Last Revised: 5 June 2018

* Includes unknown county projection values by assuming unknown county values are distributed the same as reported county values. Total values may be different due to rounding.

Nonresident Pheasant Harvest Distribution by County 2017

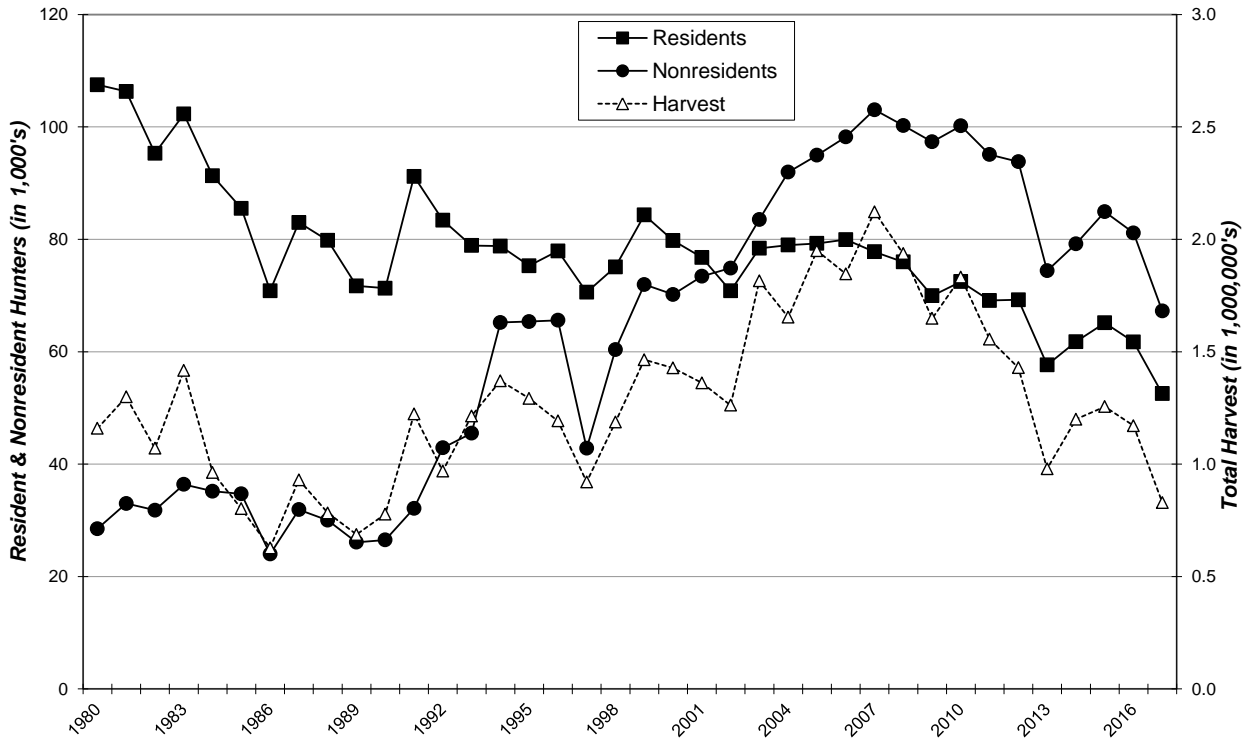
COUNTY	HUNTER DISTRIBUTION				HARVEST DISTRIBUTION				Birds/Hunter **
	# Reported	# Projected	% of Total	# Proj w/ Unk *	# Reported	# Projected	% of Total	# Proj w/ Unk *	
Minnehaha	18	261	0.4	266	83	1,201	0.2	1,222	4.6
Pennington	2	29	0.0	30	15	217	0.0	221	7.5
Brown	300	4,346	6.6	4,429	2,342	33,899	6.9	34,484	7.8
Beadle	218	3,158	4.8	3,218	1,407	20,366	4.1	20,717	6.4
Codington	48	695	1.1	709	229	3,315	0.7	3,372	4.8
Brookings	35	507	0.8	517	149	2,157	0.4	2,194	4.3
Yankton	15	217	0.3	221	93	1,346	0.3	1,369	6.2
Davison	191	2,767	4.2	2,820	1,397	20,221	4.1	20,570	7.3
Lawrence	1	14	0.0	15	6	87	0.0	88	6.0
Aurora	176	2,550	3.9	2,598	1,446	20,930	4.2	21,291	8.2
Bennett	26	377	0.6	384	81	1,172	0.2	1,193	3.1
Bon Homme	10	145	0.2	148	91	1,317	0.3	1,340	9.1
Brule	302	4,375	6.6	4,458	2,363	34,203	6.9	34,793	7.8
Buffalo	10	145	0.2	148	91	1,317	0.3	1,340	9.1
Butte	2	29	0.0	30	9	130	0.0	133	4.5
Campbell	63	913	1.4	930	430	6,224	1.3	6,331	6.8
Charles Mix	163	2,361	3.6	2,406	1,366	19,772	4.0	20,113	8.4
Clark	94	1,362	2.1	1,388	633	9,162	1.9	9,320	6.7
Clay	9	130	0.2	133	92	1,332	0.3	1,355	10.2
Corson	16	232	0.4	236	98	1,419	0.3	1,443	6.1
Custer	1	14	0.0	15	14	203	0.0	206	14.0
Day	45	652	1.0	664	268	3,879	0.8	3,946	6.0
Deuel	20	290	0.4	295	188	2,721	0.6	2,768	9.4
Dewey	69	1,000	1.5	1,019	588	8,511	1.7	8,658	8.5
Douglas	50	724	1.1	738	349	5,052	1.0	5,139	7.0
Edmunds	127	1,840	2.8	1,875	849	12,289	2.5	12,501	6.7
Fall River	5	72	0.1	74	11	159	0.0	162	2.2
Faulk	139	2,014	3.1	2,052	999	14,460	2.9	14,710	7.2
Grant	7	101	0.2	103	18	261	0.1	265	2.6
Gregory	189	2,738	4.2	2,790	1,693	24,505	5.0	24,928	9.0
Haakon	21	304	0.5	310	121	1,751	0.4	1,782	5.8
Hamlin	23	333	0.5	340	140	2,026	0.4	2,061	6.1
Hand	119	1,724	2.6	1,757	897	12,984	2.6	13,208	7.5
Hanson	28	406	0.6	413	167	2,417	0.5	2,459	6.0
Harding	5	72	0.1	74	46	666	0.1	677	9.2
Hughes	145	2,101	3.2	2,141	1,016	14,706	3.0	14,960	7.0
Hutchinson	57	826	1.3	842	429	6,210	1.3	6,317	7.5
Hyde	54	782	1.2	797	406	5,877	1.2	5,978	7.5
Jackson	5	72	0.1	74	31	449	0.1	456	6.2
Jerauld	65	942	1.4	960	528	7,643	1.5	7,774	8.1
Jones	68	985	1.5	1,004	470	6,803	1.4	6,920	6.9
Kingsbury	43	623	0.9	635	243	3,517	0.7	3,578	5.6
Lake	19	275	0.4	281	149	2,157	0.4	2,194	7.8
Lincoln	7	101	0.2	103	39	565	0.1	574	5.6
Lyman	234	3,390	5.1	3,455	1,824	26,401	5.4	26,857	7.8
McCook	23	333	0.5	340	183	2,649	0.5	2,695	7.9
McPherson	103	1,492	2.3	1,521	702	10,161	2.1	10,336	6.8
Marshall	27	391	0.6	399	160	2,316	0.5	2,356	5.9
Meade	4	58	0.1	59	35	507	0.1	515	8.7
Mellette	15	217	0.3	221	98	1,419	0.3	1,443	6.5
Miner	79	1,144	1.7	1,166	640	9,264	1.9	9,424	8.1
Moody	6	87	0.1	89	49	709	0.1	721	8.2
Perkins	42	608	0.9	620	255	3,691	0.7	3,755	6.1
Potter	114	1,651	2.5	1,683	1,002	14,503	2.9	14,754	8.8
Roberts	18	261	0.4	266	138	1,997	0.4	2,032	7.7
Sanborn	78	1,130	1.7	1,152	609	8,815	1.8	8,967	7.8
Spink	203	2,941	4.5	2,997	1,605	23,232	4.7	23,632	7.9
Stanley	44	637	1.0	650	253	3,662	0.7	3,725	5.7
Sully	75	1,086	1.6	1,107	601	8,699	1.8	8,849	8.0
Tripp	343	4,969	7.5	5,064	2,831	40,977	8.3	41,684	8.2
Turner	19	275	0.4	281	112	1,621	0.3	1,649	5.9
Union	7	101	0.2	103	99	1,433	0.3	1,458	14.1
Walworth	100	1,449	2.2	1,476	714	10,335	2.1	10,513	7.1
Ziebach	5	72	0.1	74	41	593	0.1	604	8.2
Shannon	2	29	0.0	30	29	420	0.1	427	14.5
Todd	3	43	0.1	44	18	261	0.1	265	6.0
Unk/Unreported	87	1,260	-	-	588	8,511	-	-	6.8
TOTALS	4,641	67,232	100%	67,232	34,666	501,773	100%	501,773	7.46

Last Revised: 5 June 2018

* Includes unknown county projection values by assuming unknown county values are distributed the same as reported county values. Total values may be different due to rounding.

** Calculation uses "# projected" values without correction for unknown/unreported county values.

SOUTH DAKOTA PHEASANT HARVEST 1980-2017



SOUTH DAKOTA PHEASANT HUNTERS AND AVERAGE SEASON HARVEST 1980-2017

