

PRAIRIE CHICKEN & SHARP-TAILED GROUSE

Historically, these two species, plus ruffed grouse, have been combined under the name "Prairie Grouse." In these reports, harvest estimates for these species were combined. In 2006, hunters were asked specifically how many of each species were harvested of the total harvest and 76% were identified as sharp-tailed grouse, 20% as prairie chickens, and 4% were unknown. They continue to be combined for the overall harvest estimates in this report.

The 2017 grouse season covered 16 September 2017 – 7 January 2018 statewide. Harvest surveys were sent to both resident and nonresident hunters. The daily limit was 3 birds, possession 15. To hunt grouse residents required to hold small game, 1-day small game, adult, senior or junior combination, or youth small game licenses; nonresidents were required to obtain adult or youth small game or nonresident shooting preserve licenses. Harvest surveys were sent to both resident and nonresident hunters. No shooting preserve license holders were surveyed and none of their harvest is included in any of the data in this report.

In 2017, there were 84,754 resident and 70,316 nonresident licenses issued that allowed holders to hunt grouse. Approximately 10% of residents and nonresidents were surveyed for the upland bird seasons. Survey response rates were 61% for residents and 62% for nonresidents.

Based on survey responses indicating at least one day of hunting grouse, there were a projected 5,703 resident and 3,645 nonresident grouse hunters. A projected total of 22,153 grouse were harvested (15,863 by residents, 6,290 by nonresidents) during the 2017 season.

When asked their satisfaction on the season, (1 being very dissatisfied, and 7 being very satisfied), resident upland bird hunters reported an average rating of 4.23 while nonresidents reported a rating of 5.06.

Comparison of the 2008 - 2017 prairie grouse season statistics

Year	Residents					Nonresidents				
	Hunters	Harvest	Ave Day Hunted	Ave Bag	Satisfaction	Hunters	Harvest	Ave Day Hunted	Ave Bag	Satisfaction
2008	7,044	34,023	4.46	4.83	5.31	5,383	13,458	4.26	2.50	5.86
2009	6,377	26,018	4.41	4.08	4.93	4,571	12,662	4.19	2.77	5.59
2010	7,879	39,868	4.49	5.06	5.20	5,386	17,020	3.92	3.16	5.88
2011	6,789	27,581	4.19	4.09	4.78	6,407	20,718	4.01	3.26	5.63
2012	7,197	31,223	4.68	4.38	4.65	7,037	19,005	3.83	2.70	5.14
2013	7,149	19,858	4.28	2.76	4.11	4,523	7,840	3.87	1.73	4.95
2014	6,503	25,847	4.55	4.01	4.85	4,254	9,943	3.99	2.31	5.52
2015	7,866	34,506	4.72	4.40	4.98	5,032	15,388	4.05	3.08	5.49
2016	7,199	31,611	4.88	4.40	4.72	5,203	11,294	4.04	2.18	5.43
2017	5,703	15,863	4.57	2.80	4.23	3,645	6,290	3.81	1.73	5.06

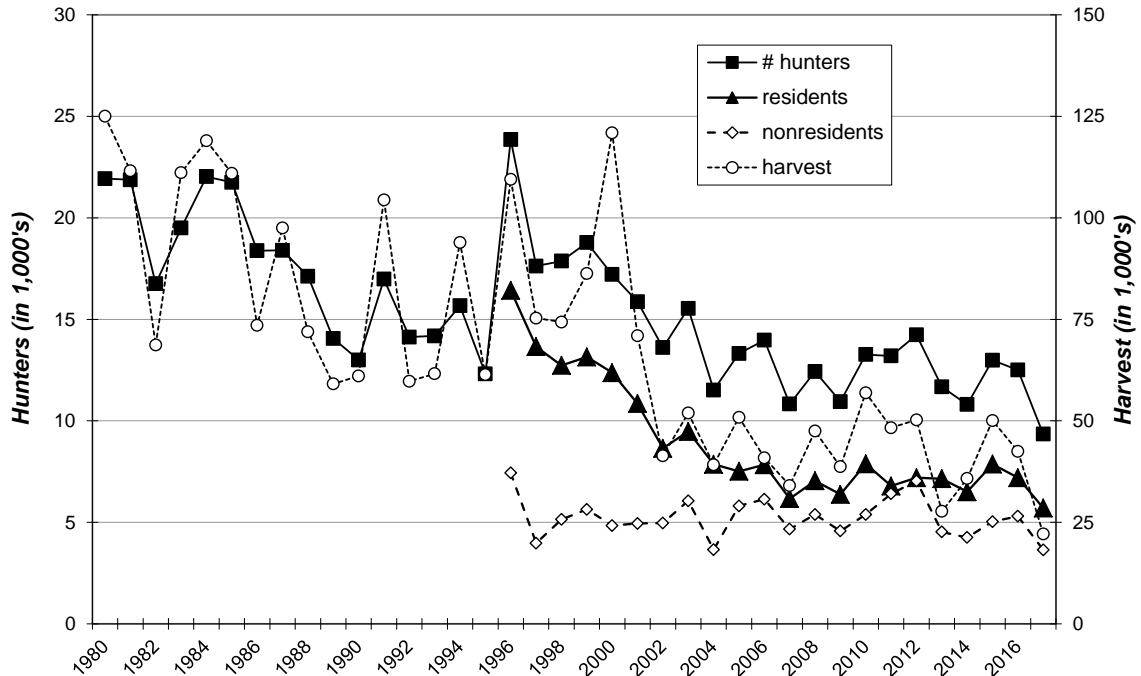
PRAIRIE GROUSE HARVEST PROJECTIONS FOR 2017

Revised: 27 April 2018

	RESIDENT TOTALS BY LICENSE TYPE						NONRESIDENT TOTALS		
	Small Game	Combo	Senior Combo	Junior Combo	Youth SmGm	Sum Estimates	Nonres Sm Game	Youth Sm Game	Sum Estimates
Licenses Sold	16,599	47,020	8,962	7,760	4,413	84,754	68,358	1,958	70,316
Projected ACTIVE UPLAND BIRD HUNTERS	13,494	28,291	4,393	3,642	3,355	53,175	65,865	1,757	67,622
Number Sampled by Survey	1,411	4,292	827	691	396	7,617	7,523	217	7,740
Number Responded to Survey	759	2,611	716	277	242	4,605	4,652	122	4,774
% Responded and Participated in Season	81%	60%	49%	47%	76%	62%	98%	91%	98%
Responded and Participated in Season	617	1,571	351	130	184	2,853	4,557	111	4,668
Responded but DID NOT HUNT	142	1,040	365	147	58	1,752	95	11	106
Survey Response Rate	53.8%	60.8%	86.6%	40.1%	61.1%	60.5%	61.8%	56.2%	61.7%
No. Hunters Reporting Prairie Grouse Days	38	211	40	10	16	315	250	2	252
Sum Prairie Grouse Hunted Days	151	982	202	36	69	1,440	953	6	959
Average Days Hunted Prairie Grouse	3.97	4.65	5.05	3.60	4.31	4.57	3.81	3.00	3.81
Sum Prairie Grouse Bagged	78	653	95	21	34	881	433	2	435
Average Season Prairie Grouse Bag	2.05	3.09	2.38	2.10	2.13	2.80	1.73	1.00	1.73
Projected Days Prairie Grouse Hunting	3,302	17,684	2,528	1,009	1,258	25,782	13,774	95	13,869
Projected No. Prairie Grouse Hunters	831	3,800	501	280	292	5,703	3,613	32	3,645
Projected Prairie Grouse Bag	1,706	11,760	1,189	588	620	15,863	6,258	32	6,290
	TOTAL PRAIRIE GROUSE HARVEST =						22,153		
Upland Bird Hunters Mean Satisfaction Score *	4.37	4.20	3.82	4.65	4.50	4.23	5.05	5.22	5.06

* Based on scale of 1-7 with 1="very dissatisfied" and 7="very satisfied"

PRAIRIE GROUSE HUNTERS & HARVEST 1980-2017



Resident Grouse Harvest Distribution by County 2017

COUNTY	HUNTER DISTRIBUTION				HARVEST DISTRIBUTION				Birds/Hunter
	# Reported	# Projected	% of Total	# Proj w/Unk *	# Reported	# Projected	% of Total	# Proj w/Unk *	
Minnehaha	0	0	0.0	0	0	0	0.0	0	0
Pennington	15	272	4.9	279	35	630	4.0	640	2.3
Brown	0	0	0.0	0	0	0	0.0	0	0
Beadle	2	36	0.7	37	2	36	0.2	37	1.0
Codington	0	0	0.0	0	0	0	0.0	0	0
Brookings	0	0	0.0	0	0	0	0.0	0	0
Yankton	0	0	0.0	0	0	0	0.0	0	0
Davison	0	0	0.0	0	0	0	0.0	0	0
Lawrence	3	54	1.0	56	0	0	0.0	0	0.0
Aurora	2	36	0.7	37	1	18	0.1	18	0.5
Bennett	9	163	2.9	167	31	558	3.6	567	3.4
Bon Homme	3	54	1.0	56	9	162	1.0	165	3.0
Brule	2	36	0.7	37	2	36	0.2	37	1.0
Buffalo	2	36	0.7	37	0	0	0.0	0	0.0
Butte	7	127	2.3	130	43	774	5.0	787	6.1
Campbell	1	18	0.3	19	2	36	0.2	37	2.0
Charles Mix	7	127	2.3	130	13	234	1.5	238	1.8
Clark	0	0	0.0	0	0	0	0.0	0	0
Clay	0	0	0.0	0	0	0	0.0	0	0
Corson	14	253	4.6	260	42	756	4.8	768	3.0
Custer	1	18	0.3	19	15	270	1.7	274	14.9
Day	0	0	0.0	0	0	0	0.0	0	0
Deuel	2	36	0.7	37	7	126	0.8	128	3.5
Dewey	10	181	3.3	186	33	594	3.8	604	3.3
Douglas	0	0	0.0	0	0	0	0.0	0	0
Edmunds	0	0	0.0	0	0	0	0.0	0	0
Fall River	10	181	3.3	186	9	162	1.0	165	0.9
Faulk	2	36	0.7	37	20	360	2.3	366	9.9
Grant	1	18	0.3	19	1	18	0.1	18	1.0
Gregory	5	91	1.6	93	3	54	0.3	55	0.6
Haakon	29	525	9.4	539	76	1,368	8.8	1,391	2.6
Hamlin	0	0	0.0	0	0	0	0.0	0	0
Hand	4	72	1.3	74	4	72	0.5	73	1.0
Hanson	0	0	0.0	0	0	0	0.0	0	0
Harding	9	163	2.9	167	32	576	3.7	585	3.5
Hughes	2	36	0.7	37	0	0	0.0	0	0.0
Hutchinson	1	18	0.3	19	0	0	0.0	0	0.0
Hyde	2	36	0.7	37	6	108	0.7	110	3.0
Jackson	3	54	1.0	56	30	540	3.5	549	9.9
Jerauld	3	54	1.0	56	2	36	0.2	37	0.7
Jones	11	199	3.6	204	39	702	4.5	714	3.5
Kingsbury	0	0	0.0	0	0	0	0.0	0	0
Lake	0	0	0.0	0	0	0	0.0	0	0
Lincoln	0	0	0.0	0	0	0	0.0	0	0
Lyman	13	235	4.2	242	40	720	4.6	732	3.1
McCook	0	0	0.0	0	0	0	0.0	0	0
McPherson	6	109	2.0	111	29	522	3.3	531	4.8
Marshall	2	36	0.7	37	6	108	0.7	110	3.0
Meade	32	579	10.4	594	74	1,332	8.5	1,354	2.3
Mellette	7	127	2.3	130	32	576	3.7	585	4.5
Miner	0	0	0.0	0	0	0	0.0	0	0
Moody	0	0	0.0	0	0	0	0.0	0	0
Perkins	29	525	9.4	539	65	1,170	7.5	1,189	2.2
Potter	5	91	1.6	93	11	198	1.3	201	2.2
Roberts	0	0	0.0	0	0	0	0.0	0	0
Sanborn	0	0	0.0	0	0	0	0.0	0	0
Spink	1	18	0.3	19	0	0	0.0	0	0.0
Stanley	24	435	7.8	446	79	1,422	9.1	1,445	3.3
Sully	5	91	1.6	93	3	54	0.3	55	0.6
Tripp	9	163	2.9	167	16	288	1.8	293	1.8
Turner	0	0	0.0	0	0	0	0.0	0	0
Union	1	18	0.3	19	0	0	0.0	0	0.0
Walworth	4	72	1.3	74	18	324	2.1	329	4.5
Ziebach	6	109	2.0	111	37	666	4.3	677	6.1
Shannon	0	0	0.0	0	0	0	0.0	0	0
Todd	1	18	0.3	19	0	0	0.0	0	0.0
Unknown	8	145	-	-	14	252	-	-	1.7
TOTALS:	315	5,703	100.0%	5,703	881	15,863	100%	15,863	2.78

Last Revised: 6 June 2018

* Includes unknown county projection values by assuming unknown county values are distributed the same as reported county values. Total values may be different due to rounding.

** Calculation uses "#projected" values without correction for unknown/unreported county values.

Nonresident Grouse Harvest Distribution by County 2017

COUNTY	HUNTER DISTRIBUTION				HARVEST DISTRIBUTION				Birds/Hunter
	# Reported	# Projected	% of Total	# Proj w/ Unk *	# Reported	# Projected	% of Total	# Proj w/ Unk *	
Minnehaha	0	0	0.0	0	0	0	0.0	0	0
Pennington	1	14	0.4	15	1	14	0.2	15	1.0
Brown	0	0	0.0	0	0	0	0.0	0	0
Beadle	3	43	1.2	44	1	14	0.2	15	0.3
Codington	0	0	0.0	0	0	0	0.0	0	0
Brookings	0	0	0.0	0	0	0	0.0	0	0
Yankton	0	0	0.0	0	0	0	0.0	0	0
Davison	0	0	0.0	0	0	0	0.0	0	0
Lawrence	0	0	0.0	0	0	0	0.0	0	0
Aurora	1	14	0.4	15	0	0	0.0	0	0.0
Bennett	10	145	4.0	148	7	101	1.7	106	0.7
Bon Homme	0	0	0.0	0	0	0	0.0	0	0
Brule	5	72	2.0	74	7	101	1.7	106	1.4
Buffalo	1	14	0.4	15	5	72	1.2	75	5.0
Butte	1	14	0.4	15	0	0	0.0	0	0.0
Campbell	0	0	0.0	0	0	0	0.0	0	0
Chas Mix	3	43	1.2	44	2	29	0.5	30	0.7
Clark	0	0	0.0	0	0	0	0.0	0	0
Clay	0	0	0.0	0	0	0	0.0	0	0
Corson	7	101	2.8	103	33	477	7.9	498	4.7
Custer	1	14	0.4	15	2	29	0.5	30	2.0
Day	2	29	0.8	30	0	0	0.0	0	0.0
Deuel	0	0	0.0	0	0	0	0.0	0	0
Dewey	25	362	10.1	369	65	940	15.6	980	2.6
Douglas	0	0	0.0	0	0	0	0.0	0	0
Edmunds	0	0	0.0	0	0	0	0.0	0	0
Fall River	0	0	0.0	0	0	0	0.0	0	0
Faulk	3	43	1.2	44	1	14	0.2	15	0.3
Grant	0	0	0.0	0	0	0	0.0	0	0
Gregory	9	130	3.6	133	5	72	1.2	75	0.6
Haakon	5	72	2.0	74	6	87	1.4	91	1.2
Hamlin	0	0	0.0	0	0	0	0.0	0	0
Hand	11	159	4.5	162	9	130	2.2	136	0.8
Hanson	0	0	0.0	0	0	0	0.0	0	0
Harding	2	29	0.8	30	9	130	2.2	136	4.5
Hughes	14	203	5.7	207	20	289	4.8	302	1.4
Hutchinson	0	0	0.0	0	0	0	0.0	0	0
Hyde	2	29	0.8	30	2	29	0.5	30	1.0
Jackson	2	29	0.8	30	4	58	1.0	60	2.0
Jerauld	0	0	0.0	0	0	0	0.0	0	0
Jones	15	217	6.1	221	17	246	4.1	256	1.1
Kingsbury	2	29	0.8	30	2	29	0.5	30	1.0
Lake	1	14	0.4	15	0	0	0.0	0	0.0
Lincoln	0	0	0.0	0	0	0	0.0	0	0
Lyman	27	391	10.9	398	52	752	12.5	784	1.9
McCook	1	14	0.4	15	1	14	0.2	15	1.0
McPherson	3	43	1.2	44	6	87	1.4	91	2.0
Marshall	1	14	0.4	15	0	0	0.0	0	0.0
Meade	3	43	1.2	44	6	87	1.4	91	2.0
Mellette	2	29	0.8	30	1	14	0.2	15	0.5
Miner	0	0	0.0	0	0	0	0.0	0	0
Moody	0	0	0.0	0	0	0	0.0	0	0
Perkins	18	260	7.3	266	48	694	11.5	724	2.7
Potter	6	87	2.4	89	9	130	2.2	136	1.5
Roberts	0	0	0.0	0	0	0	0.0	0	0
Sanborn	0	0	0.0	0	0	0	0.0	0	0
Spink	2	29	0.8	30	2	29	0.5	30	1.0
Stanley	26	376	10.5	384	54	781	12.9	815	2.1
Sully	6	87	2.4	89	9	130	2.2	136	1.5
Tripp	20	289	8.1	295	20	289	4.8	302	1.0
Turner	0	0	0.0	0	0	0	0.0	0	0
Union	0	0	0.0	0	0	0	0.0	0	0
Walworth	4	58	1.6	59	6	87	1.4	91	1.5
Ziebach	1	14	0.4	15	1	14	0.2	15	1.0
Shannon	0	0	0.0	0	0	0	0.0	0	0
Todd	1	14	0.4	15	4	58	1.0	60	4.0
Unknown	5	72	-	-	18	260	-	-	3.6
TOTALS:	252	3,645	100%	3,645	435	6,290	100%	6,290	1.73

Last Revised: 6 June 2018

* Includes unknown county projection values by assuming unknown county values are distributed the same as reported county values. Total values may be different due to rounding.

** Calculation uses "# projected" values without correction for unknown/unreported county values.