

MOURNING DOVE

The 2017 mourning dove season was open 1 September -9 November statewide. The daily limit was 15 birds, possession 30. To hunt doves, residents were required to hold a small game, 1-day small game, adult, senior or junior combination, or youth small game license; nonresidents were required to obtain a nonresident small game or nonresident youth small game license. All hunters were also required to purchase a Migratory Bird Certificate.

In 2017, 26,624 resident and 70,316 nonresident licenses were issued to hunt doves. Approximately 22% of resident migratory bird hunters and 11% of nonresident small game hunters were surveyed for the mourning dove season. Survey response rates were 60% for residents and 62% for nonresidents.

Based on survey responses indicating at least one day of hunting doves, there were an estimated 7,103 active dove hunters. The five counties with the highest projected dove harvest were Hughes, Charles Mix, Brown, Minnehaha, and Edmunds.

An estimated total of 127,514 doves were harvested during the 2017 season. When asked their satisfaction on the season, (1 being least, 7 being most satisfied), resident dove hunters reported an average satisfaction rating of 5.12, nonresidents 4.63.

Summary comparison of the 2008 - 2017 mourning dove seasons

| Year | <i>Residents</i> | | | | | <i>Nonresidents</i> | | | | |
|------|-----------------------|----------------|-----------------------|----------------|---------------------|-----------------------|----------------|-----------------------|----------------|---------------------|
| | <i>Number Hunters</i> | <i>Harvest</i> | <i>Ave Day Hunted</i> | <i>Ave Bag</i> | <i>Satisfaction</i> | <i>Number Hunters</i> | <i>Harvest</i> | <i>Ave Day Hunted</i> | <i>Ave Bag</i> | <i>Satisfaction</i> |
| 2008 | 7,346 | 125,102 | 4.39 | 17.03 | 5.01 | 373 | 7,050 | 3.40 | 18.90 | 6.00 |
| 2009 | 6,892 | 114,821 | 4.34 | 16.66 | 4.93 | 285 | 6,698 | 4.44 | 23.50 | 5.81 |
| 2010 | 6,035 | 93,361 | 4.15 | 15.47 | 5.13 | 258 | 4,267 | 4.23 | 16.54 | 6.38 |
| 2011 | 6,112 | 82,291 | 3.50 | 13.46 | 5.27 | 332 | 6,563 | 3.65 | 19.79 | 5.41 |
| 2012 | 5,984 | 88,036 | 4.16 | 14.71 | 4.99 | 366 | 7,071 | 3.19 | 19.78 | 5.78 |
| 2013 | 6,752 | 113,367 | 4.56 | 16.79 | 5.06 | 210 | 2,061 | 2.67 | 9.80 | 5.27 |
| 2014 | 8,345 | 167,407 | 4.67 | 20.06 | 5.05 | 316 | 3,991 | 2.95 | 12.62 | 5.71 |
| 2015 | 7,255 | 127,217 | 4.66 | 17.53 | 5.07 | 396 | 7,705 | 3.29 | 19.46 | 5.83 |
| 2016 | 7,131 | 122,876 | 4.19 | 17.23 | 4.89 | 318 | 3,601 | 2.79 | 11.32 | 5.59 |
| 2017 | 6,828 | 124,052 | 4.11 | 18.17 | 5.12 | 275 | 3,463 | 3.79 | 12.58 | 4.63 |

MOURNING DOVE HARVEST PROJECTIONS FOR 2017

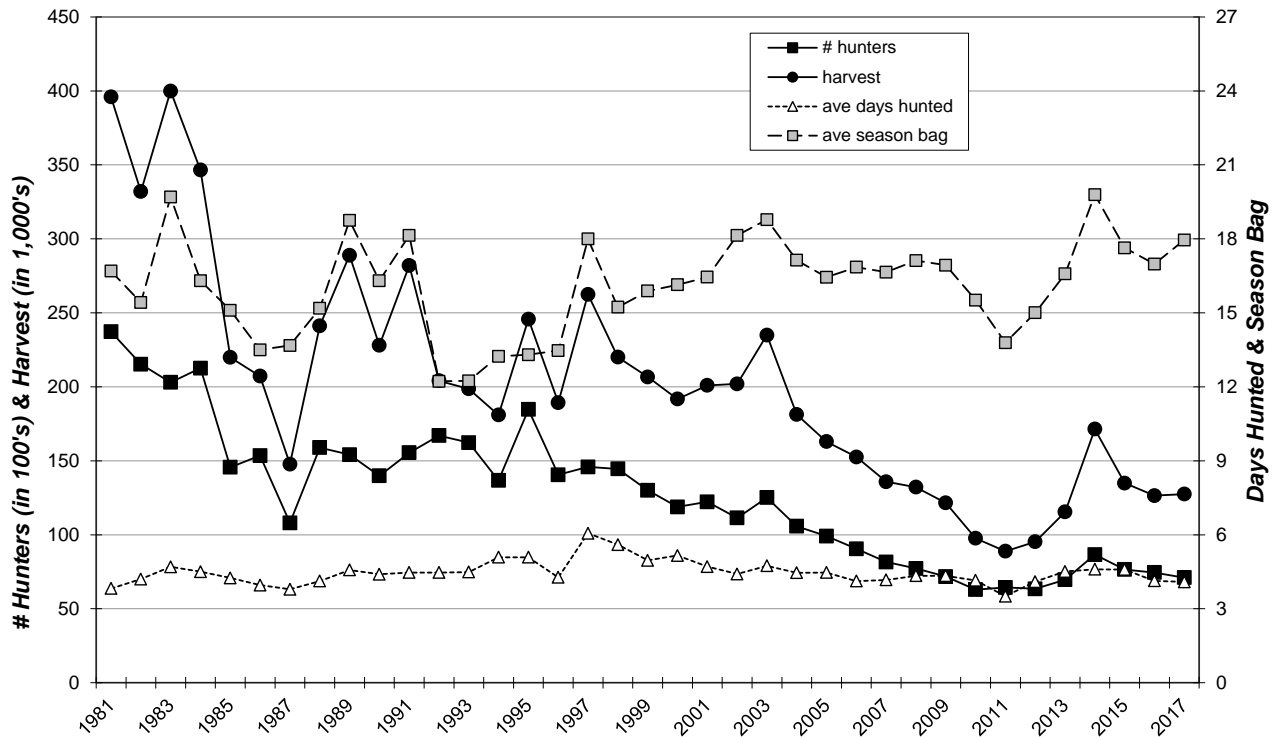
Last Revised: 1 June 2018

| | Resident | Non Resident |
|--|----------------|----------------|
| Licenses Sold * | 26,624 | 70,316 |
| Unique License Holders | 26,618 | 69,169 |
| Projected ACTIVE MOURNING DOVE HUNTERS | 6,828 | 275 |
| Number Sampled by Survey | 5,846 | 7,740 |
| Number Responded to Survey | 3,482 | 4,774 |
| Responded and Participated in Season | 893 | 19 |
| Responded but DID NOT HUNT | 2,589 | 4,755 |
| Survey Response Rate | 59.6% | 61.7% |
| No. Hunters Reporting Dove Days | 893 | 19 |
| Total Reported Dove Hunted Days | 3,666 | 72 |
| Average Days Hunted Doves | 4.11 | 3.79 |
| Total Reported Doves Bagged | 16,224 | 239 |
| Average Dove Bag for Season | 18.17 | 12.58 |
| Projected Days Dove Hunting | 28,031 | 1,043 |
| Projected No. Dove Hunters | 6,828 | 275 |
| Projected Dove Bag | 124,052 | 3,463 |
| Avg Days Hunted | | 4.09 |
| TOTAL DOVE HARVEST = | | 127,514 |
| Dove Hunter Mean Satisfaction Score *1* | 5.12 | 4.63 |

* Nonresident number represents total number of small game licenses sold.

1 Based on scale of 1-7 with 1=very dissatisfied & 7=very satisfied.

STATEWIDE MOURNING DOVE HARVEST, 1981-2017



Mourning Dove Harvest Distribution by County 2017

| COUNTY | HUNTER DISTRIBUTION | | | | HARVEST DISTRIBUTION | | | | Birds/Hunter ** |
|----------------|---------------------|--------------|-------------|-----------------|----------------------|----------------|-------------|-----------------|-----------------|
| | # Reported | # Projected | % of Total | # Proj w/ Unk * | # Reported | # Projected | % of Total | # Proj w/ Unk * | |
| Minnehaha | 68 | 530 | 7.7 | 550 | 1,236 | 9,573 | 7.8 | 9,959 | 18.1 |
| Pennington | 17 | 132 | 1.9 | 138 | 212 | 1,642 | 1.3 | 1,708 | 12.4 |
| Brown | 29 | 226 | 3.3 | 235 | 556 | 4,307 | 3.5 | 4,480 | 19.1 |
| Beadle | 22 | 171 | 2.5 | 178 | 337 | 2,610 | 2.1 | 2,715 | 15.2 |
| Codington | 33 | 257 | 3.8 | 267 | 529 | 4,097 | 3.3 | 4,262 | 15.9 |
| Brookings | 33 | 257 | 3.8 | 267 | 520 | 4,028 | 3.3 | 4,190 | 15.7 |
| Yankton | 22 | 171 | 2.5 | 178 | 492 | 3,811 | 3.1 | 3,964 | 22.2 |
| Davison | 29 | 226 | 3.3 | 235 | 340 | 2,633 | 2.1 | 2,739 | 11.7 |
| Lawrence | 3 | 23 | 0.3 | 24 | 157 | 1,216 | 1.0 | 1,265 | 52.0 |
| Aurora | 10 | 78 | 1.1 | 81 | 121 | 937 | 0.8 | 975 | 12.0 |
| Bennett | 1 | 8 | 0.1 | 8 | 4 | 31 | 0.0 | 32 | 4.0 |
| Bon Homme | 19 | 148 | 2.2 | 154 | 291 | 2,254 | 1.8 | 2,345 | 15.2 |
| Brule | 14 | 109 | 1.6 | 113 | 220 | 1,704 | 1.4 | 1,773 | 15.6 |
| Buffalo | 3 | 23 | 0.3 | 24 | 30 | 232 | 0.2 | 242 | 9.9 |
| Butte | 3 | 23 | 0.3 | 24 | 12 | 93 | 0.1 | 97 | 4.0 |
| Campbell | 1 | 8 | 0.1 | 8 | 0 | 0 | 0.0 | 0 | 0.0 |
| Charles Mix | 35 | 273 | 4.0 | 283 | 1,075 | 8,326 | 6.8 | 8,662 | 30.5 |
| Clark | 9 | 70 | 1.0 | 73 | 97 | 751 | 0.6 | 782 | 10.7 |
| Clay | 15 | 117 | 1.7 | 121 | 276 | 2,138 | 1.7 | 2,224 | 18.3 |
| Corson | 4 | 31 | 0.5 | 32 | 76 | 589 | 0.5 | 612 | 18.9 |
| Custer | 6 | 47 | 0.7 | 49 | 51 | 395 | 0.3 | 411 | 8.5 |
| Day | 16 | 125 | 1.8 | 129 | 270 | 2,091 | 1.7 | 2,175 | 16.8 |
| Deuel | 11 | 86 | 1.3 | 89 | 173 | 1,340 | 1.1 | 1,394 | 15.6 |
| Dewey | 2 | 16 | 0.2 | 16 | 40 | 310 | 0.3 | 322 | 19.9 |
| Douglas | 15 | 117 | 1.7 | 121 | 281 | 2,176 | 1.8 | 2,264 | 18.6 |
| Edmunds | 9 | 70 | 1.0 | 73 | 804 | 6,227 | 5.1 | 6,478 | 88.8 |
| Fall River | 14 | 109 | 1.6 | 113 | 203 | 1,572 | 1.3 | 1,636 | 14.4 |
| Faulk | 3 | 23 | 0.3 | 24 | 14 | 108 | 0.1 | 113 | 4.6 |
| Grant | 13 | 101 | 1.5 | 105 | 135 | 1,046 | 0.9 | 1,088 | 10.3 |
| Gregory | 8 | 62 | 0.9 | 65 | 145 | 1,123 | 0.9 | 1,168 | 18.0 |
| Haakon | 6 | 47 | 0.7 | 49 | 116 | 898 | 0.7 | 935 | 19.2 |
| Hamlin | 13 | 101 | 1.5 | 105 | 170 | 1,317 | 1.1 | 1,370 | 13.0 |
| Hand | 6 | 47 | 0.7 | 49 | 20 | 155 | 0.1 | 161 | 3.3 |
| Hanson | 16 | 125 | 1.8 | 129 | 279 | 2,161 | 1.8 | 2,248 | 17.3 |
| Harding | 0 | 0 | 0.0 | 0 | 0 | 0 | 0.0 | 0 | 0 |
| Hughes | 84 | 654 | 9.6 | 680 | 2,131 | 16,506 | 13.5 | 17,170 | 25.2 |
| Hutchinson | 6 | 47 | 0.7 | 49 | 118 | 914 | 0.7 | 951 | 19.6 |
| Hyde | 2 | 16 | 0.2 | 16 | 36 | 279 | 0.2 | 290 | 17.9 |
| Jackson | 6 | 47 | 0.7 | 49 | 117 | 906 | 0.7 | 943 | 19.4 |
| Jerauld | 6 | 47 | 0.7 | 49 | 79 | 612 | 0.5 | 637 | 13.1 |
| Jones | 7 | 55 | 0.8 | 57 | 115 | 891 | 0.7 | 927 | 16.3 |
| Kingsbury | 12 | 93 | 1.4 | 97 | 151 | 1,170 | 1.0 | 1,217 | 12.5 |
| Lake | 22 | 171 | 2.5 | 178 | 311 | 2,409 | 2.0 | 2,506 | 14.1 |
| Lincoln | 26 | 203 | 3.0 | 210 | 255 | 1,975 | 1.6 | 2,055 | 9.8 |
| Lyman | 15 | 117 | 1.7 | 121 | 193 | 1,495 | 1.2 | 1,555 | 12.8 |
| McCook | 19 | 148 | 2.2 | 154 | 202 | 1,565 | 1.3 | 1,628 | 10.6 |
| McPherson | 3 | 23 | 0.3 | 24 | 21 | 163 | 0.1 | 169 | 7.0 |
| Marshall | 4 | 31 | 0.5 | 32 | 130 | 1,007 | 0.8 | 1,047 | 32.3 |
| Meade | 19 | 148 | 2.2 | 154 | 271 | 2,099 | 1.7 | 2,184 | 14.2 |
| Mellette | 2 | 16 | 0.2 | 16 | 25 | 194 | 0.2 | 201 | 12.4 |
| Miner | 7 | 55 | 0.8 | 57 | 157 | 1,216 | 1.0 | 1,265 | 22.3 |
| Moody | 6 | 47 | 0.7 | 49 | 37 | 287 | 0.2 | 298 | 6.1 |
| Perkins | 8 | 62 | 0.9 | 65 | 241 | 1,867 | 1.5 | 1,942 | 30.0 |
| Potter | 4 | 31 | 0.5 | 32 | 100 | 775 | 0.6 | 806 | 24.9 |
| Roberts | 7 | 55 | 0.8 | 57 | 113 | 875 | 0.7 | 910 | 16.1 |
| Sanborn | 8 | 62 | 0.9 | 65 | 87 | 674 | 0.5 | 701 | 10.8 |
| Spink | 15 | 117 | 1.7 | 121 | 313 | 2,424 | 2.0 | 2,522 | 20.8 |
| Stanley | 15 | 117 | 1.7 | 121 | 224 | 1,735 | 1.4 | 1,805 | 14.9 |
| Sully | 22 | 171 | 2.5 | 178 | 407 | 3,152 | 2.6 | 3,279 | 18.4 |
| Tripp | 6 | 47 | 0.7 | 49 | 180 | 1,394 | 1.1 | 1,450 | 29.8 |
| Turner | 16 | 125 | 1.8 | 129 | 181 | 1,402 | 1.1 | 1,458 | 11.2 |
| Union | 11 | 86 | 1.3 | 89 | 221 | 1,712 | 1.4 | 1,781 | 20.0 |
| Walworth | 8 | 62 | 0.9 | 65 | 81 | 627 | 0.5 | 653 | 10.1 |
| Ziebach | 2 | 16 | 0.2 | 16 | 40 | 310 | 0.3 | 322 | 19.9 |
| Shannon | 1 | 8 | 0.1 | 8 | 1 | 8 | 0.0 | 8 | 1.0 |
| Todd | 1 | 8 | 0.1 | 8 | 6 | 46 | 0.0 | 48 | 6.0 |
| Unk/Unreported | 34 | 265 | - | - | 637 | 4,934 | - | - | 18.6 |
| TOTALS: | 912 | 7,103 | 100% | 7,103 | 16,463 | 127,514 | 100% | 127,514 | 17.95 |

Last Revised: 6 June 2018

* Includes unknown county projection values by assuming unknown county values are distributed the same as reported county values. Total values may be different due to rounding.

** Calculation uses "# projected" values without correction for unknown/unreported county values.