

CANADA GEESE (all seasons)

Information provided in this section pertains to the entire Canada goose harvest in South Dakota and combines information from all seasons. The next two sections report specifically on the Early Fall (September) and Special Bennett County seasons.

The 2017 Canada goose season was open from 2 September 2017 - 18 February 2018 statewide, although some units may have opened later and/or closed sooner. The daily bag was 15 geese prior to 1 October; and after that it was 8 geese in Unit 1, but only 4 in Units 2 and 3 (refer to 2017 Hunting Handbook). Possession was three times the daily bag. Resident hunters were separately licensed for one Special Canada goose unit in Bennett County. To hunt geese, residents were required to hold small game, 1-day small game, adult, senior or junior combination, or youth small game licenses plus a migratory bird certification. Nonresidents were required to obtain a nonresident waterfowl license. All hunters age 16 and over were also required to obtain a federal waterfowl stamp. Special Canada goose season hunters were required to apply for and receive Special Canada goose season licenses.

In 2017, there were an estimated 12,190 hunters who hunted at least one day for Canada geese (9,762 residents, 2,428 nonresidents). From the survey responses, there were a projected total of 83,427 Canada geese harvested (76,827 by residents, 6,601 by nonresidents). Average Canada goose bag for residents was 4.87, for nonresidents 2.74. An estimated 22,973 Canada geese were harvested within 20 miles of the Missouri River.

The five counties with the highest reported harvest by residents were Hughes, Day, Roberts, Clark, and Codington, and by nonresidents in unit 00B were Day, Marshall, Roberts, McPherson, and Clark.

When asked their satisfaction on the season, (1 being least satisfied, 7 being most satisfied), Canada goose hunters reported an average rating of 5.06 for residents and 5.18 for nonresidents. The average days hunted by all hunters (6.95 residents, 4.19 nonresidents) projected to a total of 78,109 recreation days for the season.

Comparison of the 2008 - 2017 Canada goose harvest statistics

Year	<i>Resident Hunters</i>					<i>Nonresident Hunters</i>				
	<i>Number Hunters</i>	<i>Harvest</i>	<i>Ave Day Hunted</i>	<i>Ave Bag</i>	<i>Satisfaction</i>	<i>Number Hunters</i>	<i>Harvest</i>	<i>Ave Day Hunted</i>	<i>Ave Bag</i>	<i>Satisfaction</i>
2008	13,463	97,068	7.21	7.21	5.03	2,483	6,381	3.89	2.57	5.24
2009	12,927	98,892	7.25	7.65	4.92	1,986	5,561	4.14	2.80	5.27
2010	13,552	123,188	7.53	9.09	5.19	2,198	6,440	4.45	2.93	5.50
2011	13,376	131,505	7.28	9.83	5.31	2,167	6,332	4.25	2.92	5.63
2012	13,725	157,363	7.61	11.47	5.19	2,277	7,054	4.37	3.10	5.44
2013	12,004	117,846	7.54	9.82	5.06	2,160	6,310	4.24	2.92	5.37
2014	12,130	97,956	6.92	8.08	4.96	1,969	5,193	4.31	2.76	5.22
2015	10,228	73,471	7.00	7.18	4.78	2,104	5,482	4.30	2.70	4.98
2016	9,964	85,809	6.98	8.61	4.87	2,046	5,485	4.51	2.77	4.86
2017	9,762	76,827	6.95	7.87	5.06	2,428	6,601	4.19	2.74	5.18

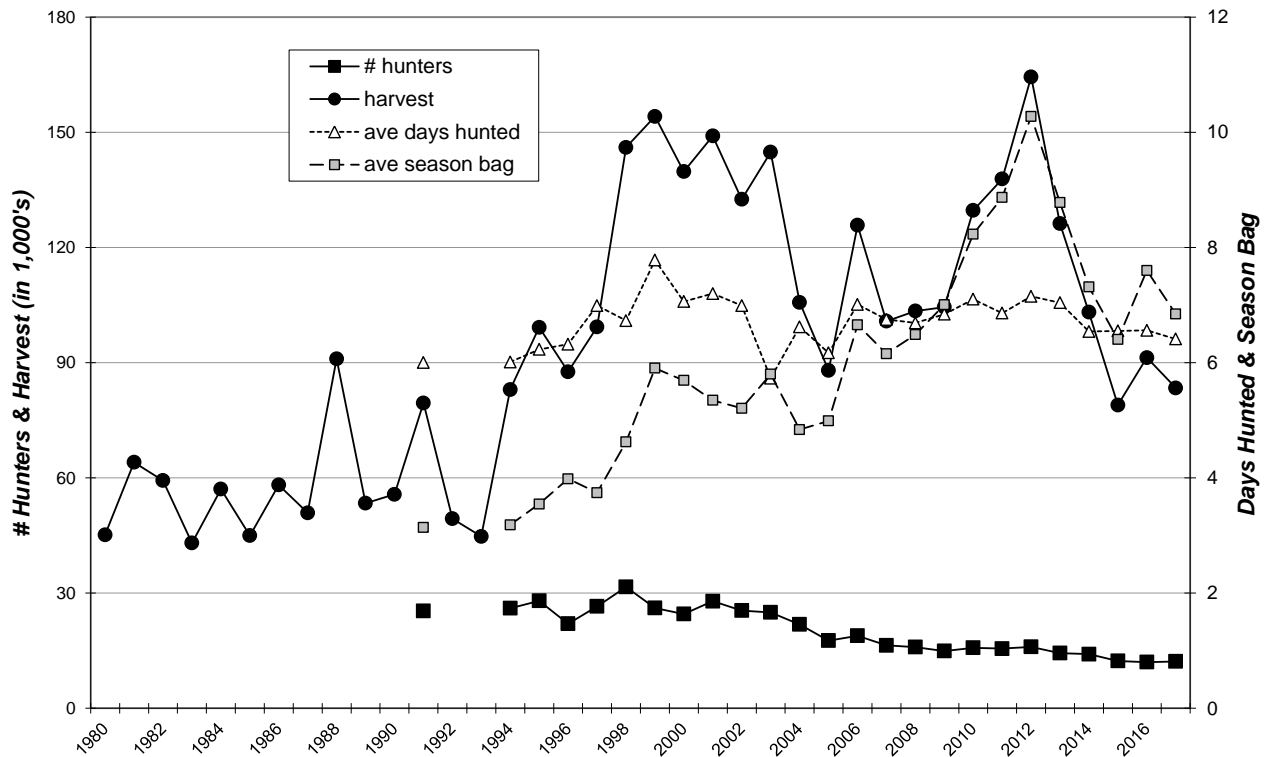
CANADA GOOSE HUNTING SUMMARY FOR 2017

Revised: 30 May 2018

	NONRESIDENT TOTALS BY UNIT								NR Totals	Resident Total
	00A	00B	11A	00V	00X	00Y	00Z	YW1		
No. Hunters Reporting Canada Goose Days	91	673	6	56	97	137	45		1,105	1,277
Total Reported Canada Goose Hunted Days	650	3,065	19	156	237	389	116		4,632	8,871
Average Days Hunted Canada Geese	7.14	4.55	3.17	2.79	2.44	2.84	2.58		4.19	6.95
Total Reported Canada Geese Bagged	354	1,815	8	81	360	308	101		3,027	10,050
Average Canada Goose Bag for Season	3.89	2.70	1.33	1.45	3.71	2.25	2.24		2.74	7.87
Projected Days Canada Goose Hunting	965	7,741	28	319	429	581	232		10,295	67,814
Projected No. Canada Goose Hunters	135	1,700	9	114	176	205	90		2,428	9,762
Projected Canada Goose Bag	526	4,584	12	166	652	460	202		6,601	76,827
Canada Geese Reported w/in 20 miles of Missouri River	303	175	0	13	347	4	0		842	2,802
Projected Canada Geese Bagged w/in 20 miles of Missouri F	450	442	0	27	628	6	0		1,553	21,420
TOTAL CANADA GOOSE HARVEST ALL SEASONS = 83,427										
Canada Goose Hunter Mean Satisfaction Score *1*	4.70	5.24	6.33	4.86	5.31	5.28	4.90		5.18	5.06

1 Based on scale of 1-7 with 1=very dissatisfied & 7=very satisfied

STATEWIDE CANADA GOOSE (all seasons) HARVEST, 1980-2017



Resident Canada Goose Harvest Distribution by County 2017

COUNTY	HUNTER DISTRIBUTION				HARVEST DISTRIBUTION				Birds/Hunter **
	# Reported	# Projected	% of Total	# Proj w/ Unk *	# Reported	# Projected	% of Total	# Proj w/ Unk *	
Minnehaha	40	306	3.3	322	280	2,140	2.9	2,236	7.0
Pennington	13	99	1.1	105	76	581	0.8	607	5.8
Brown	41	313	3.4	331	294	2,247	3.1	2,348	7.2
Beadle	23	176	1.9	185	151	1,154	1.6	1,206	6.6
Codington	66	505	5.5	532	520	3,975	5.4	4,152	7.9
Brookings	54	413	4.5	435	259	1,980	2.7	2,068	4.8
Yankton	12	92	1.0	97	128	978	1.3	1,022	10.7
Davison	7	54	0.6	56	19	145	0.2	152	2.7
Lawrence	8	61	0.7	64	92	703	1.0	735	11.5
Aurora	6	46	0.5	48	8	61	0.1	64	1.3
Bennett	21	161	1.7	169	125	956	1.3	998	6.0
Bon Homme	21	161	1.7	169	226	1,728	2.3	1,805	10.8
Brule	23	176	1.9	185	218	1,666	2.3	1,741	9.5
Buffalo	2	15	0.2	16	39	298	0.4	311	19.5
Butte	13	99	1.1	105	63	482	0.7	503	4.8
Campbell	4	31	0.3	32	52	398	0.5	415	13.0
Charles Mix	30	229	2.5	242	388	2,966	4.0	3,098	12.9
Clark	53	405	4.4	427	543	4,151	5.6	4,336	10.2
Clay	6	46	0.5	48	54	413	0.6	431	9.0
Corson	7	54	0.6	56	48	367	0.5	383	6.9
Custer	2	15	0.2	16	0	0	0.0	0	0.0
Day	83	634	6.9	669	731	5,588	7.6	5,837	8.8
Deuel	23	176	1.9	185	224	1,712	2.3	1,789	9.7
Dewey	1	8	0.1	8	3	23	0.0	24	3.0
Douglas	6	46	0.5	48	33	252	0.3	264	5.5
Edmunds	16	122	1.3	129	166	1,269	1.7	1,326	10.4
Fall River	18	138	1.5	145	129	986	1.3	1,030	7.2
Faulk	5	38	0.4	40	21	161	0.2	168	4.2
Grant	24	183	2.0	193	330	2,523	3.4	2,635	13.8
Gregory	3	23	0.2	24	5	38	0.1	40	1.7
Haakon	3	23	0.2	24	19	145	0.2	152	6.3
Hamlin	41	313	3.4	331	265	2,026	2.8	2,116	6.5
Hand	6	46	0.5	48	11	84	0.1	88	1.8
Hanson	4	31	0.3	32	15	115	0.2	120	3.8
Harding	0	0	0.0	0	0	0	0.0	0	0
Hughes	123	940	10.2	992	1,049	8,019	10.9	8,377	8.5
Hutchinson	6	46	0.5	48	20	153	0.2	160	3.3
Hyde	3	23	0.2	24	17	130	0.2	136	5.7
Jackson	1	8	0.1	8	3	23	0.0	24	3.0
Jerauld	6	46	0.5	48	4	31	0.0	32	0.7
Jones	1	8	0.1	8	1	8	0.0	8	1.0
Kingsbury	57	436	4.7	459	484	3,700	5.0	3,865	8.5
Lake	41	313	3.4	331	267	2,041	2.8	2,132	6.5
Lincoln	9	69	0.7	73	99	757	1.0	791	11.0
Lyman	9	69	0.7	73	65	497	0.7	519	7.2
McCook	22	168	1.8	177	73	558	0.8	583	3.3
McPherson	21	161	1.7	169	193	1,475	2.0	1,541	9.2
Marshall	35	268	2.9	282	288	2,202	3.0	2,300	8.2
Meade	11	84	0.9	89	50	382	0.5	399	4.5
Mellette	0	0	0.0	0	0	0	0.0	0	0
Miner	14	107	1.2	113	84	642	0.9	671	6.0
Moody	9	69	0.7	73	15	115	0.2	120	1.7
Perkins	12	92	1.0	97	63	482	0.7	503	5.3
Potter	8	61	0.7	64	29	222	0.3	232	3.6
Roberts	43	329	3.6	347	531	4,059	5.5	4,240	12.3
Sanborn	11	84	0.9	89	50	382	0.5	399	4.5
Spink	11	84	0.9	89	88	673	0.9	703	8.0
Stanley	23	176	1.9	185	275	2,102	2.9	2,196	12.0
Sully	20	153	1.7	161	203	1,552	2.1	1,621	10.2
Tripp	5	38	0.4	40	17	130	0.2	136	3.4
Turner	12	92	1.0	97	41	313	0.4	327	3.4
Union	7	54	0.6	56	16	122	0.2	128	2.3
Walworth	4	31	0.3	32	54	413	0.6	431	13.5
Ziebach	1	8	0.1	8	5	38	0.1	40	5.0
Shannon	0	0	0.0	0	0	0	0.0	0	0
Todd	1	8	0.1	8	2	15	0.0	16	2.0
Unk/Unreported	66	505	-	-	429	3,279	-	-	6.5
TOTALS:	1,277	9,762	100%	9,762	10,050	76,827	100%	76,827	7.87

Last Revised: 1 June 2018

* Includes unknown county projection values by assuming unknown county values are distributed the same as reported county values. Total values may be different due to rounding.

** Calculation uses "# projected" values without correction for unknown/unreported county values.