

ARCHERY ELK

A total of 269 resident licenses were issued for the 2017 Archery Elk season. All license holders were sent a survey at the end of the season and 230 responded for an 86% response rate. Approximately 70% responded through the Internet.

Respondents reported hunting an average of 11.29 days for a total of 3,037 days of recreation for the season. The projected harvest was 50 bulls and 20 cows for an overall success rate of 26%.

Hunter satisfaction was based on a numerical scale from 1 (very dissatisfied) to 7 (very satisfied) and averaged 5.60 for the season. Approximately 97% of responding hunters reported hunting on public land, 2% on private land they did not own, and 1% on private land they owned.

Prior to 2002 it was assumed that any hunter that did not report harvesting an elk at the mandatory check-in was unsuccessful, and success was measured by dividing the number of hunters that reported harvesting an elk by the total number of tags issued.

Summary comparison of the 2008-2017 Archery Elk seasons

Year	# Apps 1 st Choice	Licenses Sold	Harvest			Success Rate	Avg. Days Hunted	Average Satisfaction
			Bulls	Cows	Total			
2008	3,660	202	47	9	56	28%	10.87	5.31
2009	3,826	185	52	9	61	33%	10.29	5.52
2010	3,761	144	34	6	40	28%	11.88	5.16
2011	3,486	126	24	8	32	25%	11.42	5.01
2012	3,228	97	33	4	38	39%	11.94	5.34
2013	3,952	107	33	3	36	34%	11.97	5.59
2014	4,256	106	38	4	42	40%	11.68	5.61
2015	4,761	196	55	12	66	34%	11.74	5.39
2016	4,965	280	57	25	82	29%	11.11	5.40
2017	4,892	269	50	20	70	26%	11.29	5.60

2017 Archery Elk Harvest Projections

Last Revised: 22 March 2018

Unit/Type	Resident Licenses					Harvest Projections							Avg Satisfctn Score	Avg Days Hunted	Land Hunted Most		
	Appl. 1st Choice *	Avail.	Sold	Resp.	Success	Bulls	Cows	Bull Calves	Cow Calves	Total Elk Harvested	CI (95%)	Elk Shot Not Recovered			Public	Own	Other Private
H1A-21	641	25	25	88%	18%	5	0	0	0	5	+/-1	9	5.2	16.2	24	1	0
H1A-23	6	10	9	89%	0%	0	0	0	0	0	+/-0	0	6.0	9.4	8	0	0
H2A-21	3,628	90	88	86%	39%	34	1	0	0	35	+/-4	15	5.6	13.3	88	0	0
H2A-23	55	105	101	85%	16%	1	15	0	0	16	+/-3	8	5.7	8.5	95	0	0
H3A-21	380	25	24	83%	50%	10	2	0	0	12	+/-2	6	6.3	11.1	20	1	1
H3A-23	4	10	10	80%	13%	0	1	0	0	1	+/-1	1	5.4	9.4	6	0	4
H5A-21	33	2	2	100%	50%	1	0	0	0	1	+/-0	1	5.5	11.5	2	0	0
H7A-21	143	5	5	80%	0%	0	0	0	0	0	+/-0	3	4.8	17.3	5	0	0
H7A-23	2	5	5	80%	0%	0	0	0	0	0	+/-0	0	4.0	9.0	5	0	0
Totals	4,892	277	269	85.5%	26.0%	50	20	0	0	70	+/- 11	43	5.60	11.29	254	2	5

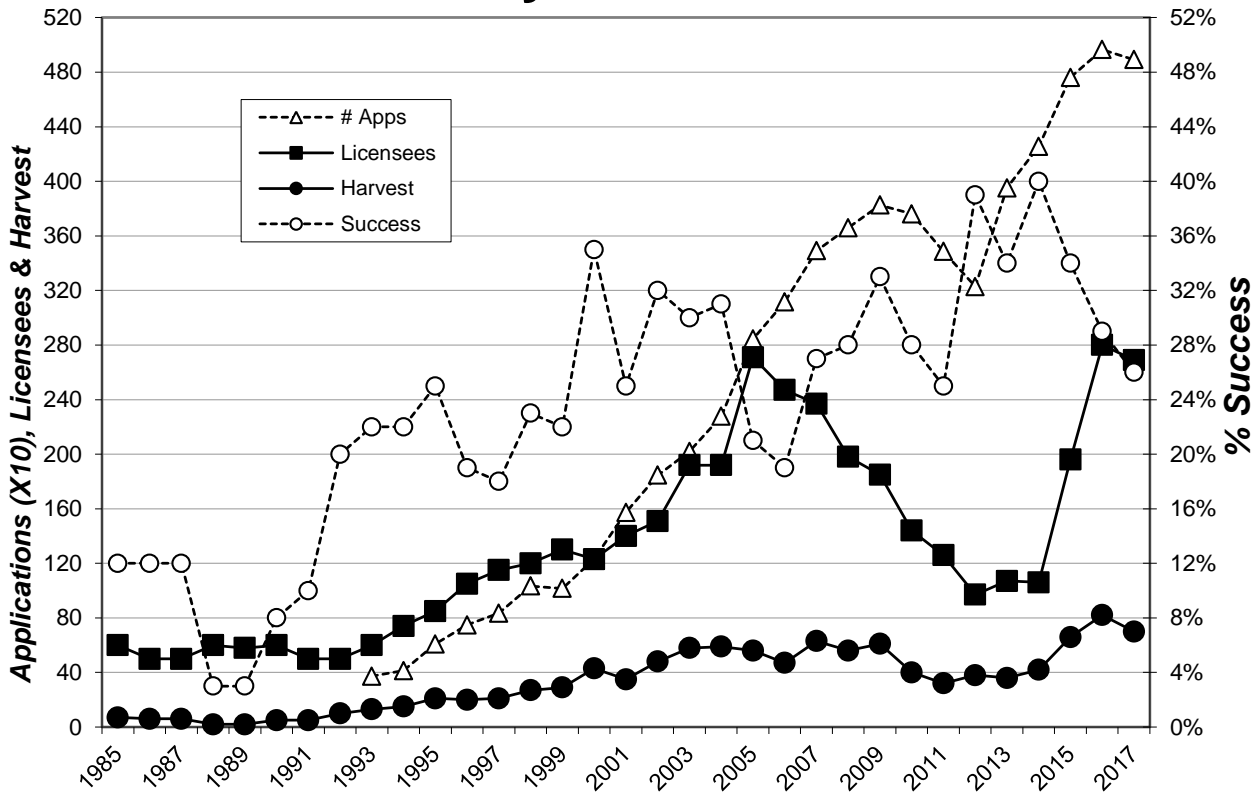
The response rate for all units combined is: 85.5%

Satisfaction scale of 1=very dissatisfied to 7=very satisfied.

* Number of 1st drawing applicants with that unit as 1st choice.

97% 1% 2%

Archery Elk 1985-2017



BLACK HILLS FIREARM ELK

A total of 1,581 licenses were issued for the 2017 Black Hills Firearm Elk season. All license holders were sent a survey at the end of the season and 1,404 responded for an 89% response rate. Approximately 73% responded through the Internet.

Respondents reported hunting an average of 4.77 days which projects to a total of 7,542 days of recreation for the season. The projected harvest was 364 bulls and 682 cows for an overall success rate of 66%.

Hunter satisfaction was based on a numerical scale from 1 (very dissatisfied) to 7 (very satisfied) and averaged 5.50 for the season. Approximately 92% of responding hunters reported hunting on public land, 5% on private land they did not own, and 3% on private land they owned.

Prior to 2002 it was assumed that any hunter that did not report harvesting an elk at the mandatory check in was unsuccessful, and success was measured by dividing the number of hunters that reported harvesting an elk by the total number of tags issued.

Summary comparison of the 2008-2017 Black Hills Firearm Elk seasons

<i>Year</i>	<i># Apps 1st Choice</i>	<i>Licenses Sold</i>	<i>Harvest</i>			<i>Success Rate</i>	<i>Avg. Days Hunted</i>	<i>Average Satisfaction</i>
			<i>Bulls</i>	<i>Cows</i>	<i>Total</i>			
2008	13,083	1,675	473	390	863	52%	6.57	4.62
2009	12,915	1,366	404	379	783	57%	6.38	4.70
2010	12,197	1,059	300	260	560	53%	6.64	4.47
2011	11,031	866	299	173	472	55%	6.80	4.64
2012	9,665	570	291	125	416	73%	6.37	5.30
2013	11,274	620	272	103	374	60%	6.63	4.65
2014	11,461	664	295	178	472	71%	5.85	5.46
2015	12,126	922	312	345	657	71%	6.66	5.54
2016	12,692	1,745	363	724	1,087	62%	4.59	5.42
2017	12,201	1,581	364	682	1,047	66%	4.77	5.50

2017 Black Hills Firearm Elk Harvest Projections

Last Revised: 22 March 2018

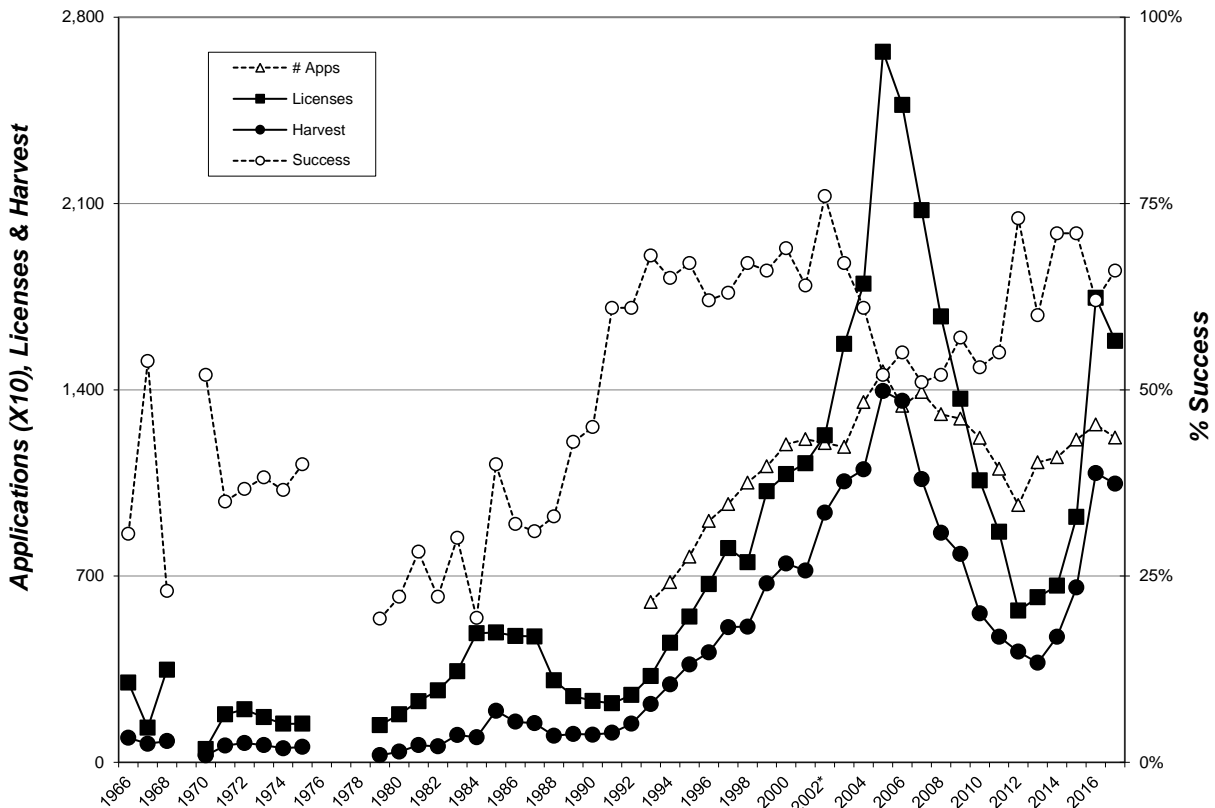
Unit/Type	Resident Licenses					Harvest Projections						Elk Shot Not Recovered	Avg Satisfctn Score	Avg Days Hunted	Land Hunted Most		
	Appl. 1st Choice *	Avail.	Sold	Resp.	Success	Bulls	Cows	Calves	Calves	Total Elk Harvested	CI (95%)				Public	Own	Private
H1A-21	1,136	75	75	91%	78%	53	6	0	0	58	+/-2	8	5.51	6.4	69	3	1
H1B-23	57	30	30	77%	26%	0	8	0	0	8	+/-3	0	4.68	6.1	29	0	0
H2A-21	8,825	250	247	91%	84%	196	11	1	0	208	+/-3	12	5.96	6.8	231	7	3
H2B-23	210	175	173	91%	59%	0	94	3	5	103	+/-4	9	5.66	5.0	172	0	0
H2C-23	41	125	125	86%	69%	0	78	5	4	86	+/-4	5	5.85	3.7	119	0	0
H2D-23	11	25	25	79%	58%	0	11	1	3	14	+/-3	3	5.88	2.4	21	0	0
H2E-23	93	200	197	89%	50%	0	87	3	9	99	+/-5	1	5.10	4.2	183	0	2
H2F-23	80	200	198	92%	62%	0	108	7	8	123	+/-4	8	5.33	4.0	189	0	1
H2G-23	22	125	123	93%	86%	0	91	4	11	106	+/-2	5	6.01	2.5	121	0	0
H2H-23	6	15	15	80%	58%	0	9	0	0	9	+/-2	0	5.18	3.2	14	0	0
H2I-23	3	15	15	87%	85%	0	13	0	0	13	+/-1	1	5.62	3.5	15	0	0
H2J-23	1	15	15	87%	69%	0	8	0	2	10	+/-1	1	5.92	3.2	15	0	0
H3A-21	1,222	80	80	90%	78%	54	8	0	0	62	+/-2	3	5.72	5.2	42	28	9
H3B-23	15	15	14	93%	38%	0	4	0	1	5	+/-1	0	5.00	4.1	12	0	1
H3C-23	2	15	15	93%	57%	0	9	0	0	9	+/-1	0	5.31	3.9	12	0	2
H3D-23	0	15	15	93%	71%	0	11	0	0	11	+/-1	2	5.93	4.4	15	0	0
H3E-23	19	50	50	82%	40%	0	16	1	3	20	+/-3	3	4.37	5.0	30	1	16
H3F-23	10	50	50	86%	56%	0	23	0	5	28	+/-3	0	5.17	3.7	29	1	17
H3G-23	4	50	51	88%	60%	0	28	1	1	31	+/-3	1	5.23	3.8	37	0	11
H4A-21	35	8	8	100%	88%	7	0	0	0	7	+/-0	0	5.86	1.8	1	2	4
H5A-21	52	5	5	80%	50%	3	0	0	0	3	+/-1	0	3.00	13.3	4	1	0
H7A-21	299	20	20	80%	94%	19	0	0	0	19	+/-1	1	5.56	9.9	18	1	1
H7B-23	13	20	20	65%	31%	0	6	0	0	6	+/-3	0	3.85	8.2	20	0	0
H9A-21	44	5	5	100%	100%	5	0	0	0	5	+/-0	0	6.40	6.2	0	2	3
H9B-23	1	10	10	80%	50%	0	4	1	0	5	+/-2	0	4.63	6.4	4	1	5
Totals	12,201	1,593	1,581	89.0%	66.2%	336	631	28	51	1,047	+/- 55	63	5.50	4.77	1,403	48	77

The response rate for all units combined is: 89.0%

Satisfaction scale of 1=very dissatisfied to 7=very satisfied.

* Number of 1st drawing applicants with that unit as 1st choice.

Black Hills Firearm Elk 1966-2017



PRAIRIE FIREARM ELK

A total of 149 licenses were issued for the 2017 Prairie Firearm Elk season. All license holders were sent a survey at the end of the season and 131 responded for an 88% response rate. Approximately 67% responded through the Internet.

Respondents reported hunting an average of 6.43 days for a total of 958 days of recreation. The projected harvest was 41 bulls and 34 cows for an overall success rate of 50%.

Hunter satisfaction was based on a numerical scale from 1 (very dissatisfied) to 7 (very satisfied) and averaged 4.81 for the season.

Approximately 16% of responding hunters reported hunting mostly on public land, 68% on private land they did not own, and 16% on private land they owned.

Summary comparison for 2008-2017 Prairie Firearm Elk seasons

YEAR	Licenses	Harvest			Success	Avg. Days Hunted	Average Satisfaction
	Sold	Bulls	Cows	Total			
2008	76	18	17	35	46%	7.46	4.29
2009	133	29	22	51	38%	5.31	4.17
2010	134	24	27	51	38%	3.92	4.00
2011	128	20	15	35	27%	4.03	4.02
2012	97	26	20	46	47%	5.22	4.72
2013	96	18	13	30	32%	4.81	4.15
2014	92	33	25	59	64%	3.73	5.31
2015	98	29	25	54	55%	4.59	5.34
2016	148	32	27	60	40%	4.76	4.68
2017	149	41	34	75	50%	6.43	4.81

2017 Prairie Firearm Elk Harvest Projections

Last Revised: 22 March 2018

Unit/Type	Resident Licenses					Harvest Projections							Elk Shot Not Recovered	Avg Satisfctn Score	Avg Days Hunted	Land Hunted Most		
	Appl. 1st		Resp.	Success	Bulls	Cows	Calves	Cow Calves	Total Elk Harvested	CI (95%)	Public	Own				Private	Other	
	Choice *	Avail.																Sold
09A-21	448	10	10	90%	78%	8	0	0	0	8	+/-1	1	5.8	8.9	0	4	6	
09A-23	31	40	40	95%	16%	0	5	0	1	6	+/-1	0	3.8	5.2	1	1	28	
11A-23	23	10	10	90%	78%	0	8	0	0	8	+/-1	0	6.3	2.0	0	0	9	
11B-21	512	12	12	75%	100%	12	0	0	0	12	+/-0	0	5.1	3.2	4	4	4	
11C-21	250	12	12	67%	75%	9	0	0	0	9	+/-2	0	4.9	6.4	3	5	5	
11D-23	61	20	20	90%	72%	0	13	0	1	14	+/-1	0	6.2	4.3	3	0	16	
15A-21	250	10	10	90%	22%	2	0	0	0	2	+/-1	0	3.3	21.9	0	4	6	
15A-23	13	10	10	80%	13%	0	1	0	0	1	+/-1	0	3.9	9.8	0	1	9	
27A-21	644	15	15	93%	64%	9	1	0	0	10	+/-1	0	5.1	4.6	6	3	5	
27A-23	17	10	10	90%	44%	0	3	1	0	4	+/-1	0	5.2	5.6	4	0	2	
Totals	2,249	149	149	87.9%	50.3%	40	32	1	2	75	+/- 10	1	4.81	6.43	22	22	90	
The response rate for all units combined is:					87.9%													
Satisfaction scale of 1=very dissatisfied to 7=very satisfied.															16%	16%	68%	
* Number of 1st drawing applicants with that unit as 1st choice.																		

CUSTER STATE PARK ARCHERY ELK

A total of 3 resident licenses were issued for the 2017 Custer State Park Early Archery Elk season which was open from September 1-30. There was no Late CSP Archery season in 2017.

Respondents reported hunting an average of 9.7 days for a total of 29 days of recreation. One hunter reported harvesting an adult bull. Hunter satisfaction was based on a numerical scale from 1 (very dissatisfied) to 7 (very satisfied) and averaged 5.67 for the season.

Summary comparison of the 2008-2017 CSP Archery elk seasons

Year	Applications	Licenses	Bull Harvest	Cow Harvest	Success	Avg. Days Hunted	Average Satisfaction
2008	5,083	58	8	0	16%	8.74	NA
2009	5,141	58	5	3	15%	10.4	NA
2010	4,898	35	0	0	0%	11.2	NA
2011	3,863	18	1	0	6%	7.8	NA
2012	2,077	3	0	0	0%	14.0	NA
2013	2,740	3	3	0	100%	9.3	NA
2014	3,023	4	4	0	100%	8.8	7.00
2015	3,600	4	3	0	75%	16.3	6.50
2016	3,707	3	1	0	33%	15.0	6.00
2017	3,704	3	1	0	33%	9.7	5.67

CUSTER STATE PARK FIREARM ANY ELK

A total of 9 resident licenses were issued for the 2017 Custer State Park Firearm Any Elk season which was open from September 16 – October 1.

Respondents reported hunting an average of 2.3 days for a total of 21 days of recreation. All hunters but one responded and all but one reported harvesting adult bulls. Hunter satisfaction was based on a numerical scale from 1 (very dissatisfied) to 7 (very satisfied) and averaged 6.71 for the season.

Summary comparison of the 2008-2017 CSP Firearm Any elk seasons

Year	Applications	Licenses	Bull Harvest	Cow Harvest	Success	Avg. Days Hunted	Average Satisfaction
2008	10,998	36	35	0	97%	3.9	NA
2009	10,823	36	30	1	86%	5.7	NA
2010	10,145	21	14	2	76%	NA	NA
2011	8,019	11	10	0	91%	5.50	NA
2012	6,582	4	4	0	100%	1.75	NA
2013	7,860	4	3	1	100%	2.00	NA
2014	8,084	4	4	0	100%	1.00	7.00
2015	9,136	8	8	0	100%	1.90	6.88
2016	8,958	9	8	0	89%	2.80	6.56
2017	8,828	9	8	0	88%	2.30	6.71

CUSTER STATE PARK ANTLERLESS ELK

A total of 29 resident licenses were issued for the 2017 Custer State Park Antlerless Elk season which was open from October 7-15 for Unit CU1, October 21-29 for Unit CU2, and December 2-10 for Unit CU3. An additional three seasons were scheduled with 10 licenses each, but were canceled due to a fire that burned a significant portion of the Park.

Respondents reported hunting an average of 2.1 days for a total of 61 days of recreation. All hunters responded and one adult bull, 23 adult cows, and one cow calf were reported harvested. One hunter reported shooting an elk that he/she was unable to recover. Hunter satisfaction was based on a numerical scale from 1 (very dissatisfied) to 7 (very satisfied) and averaged 5.83 for the season.

Summary comparison of the 2007-2017 CSP Antlerless elk seasons

Year	Applications	Licenses	Bull Harvest	Cow Harvest	Success	Avg. Days Hunted	Average Satisfaction
2007	3,763	60	1	31	53%	3.3	NA
2008	3,646	40	2	21	55%	2.8	NA
2009	3,548	20	0	19	95%	2.5	NA
2010	3,192	5	0	4	80%	NA	NA
2011-15	Closed						
2016	3,138	20	0	18	90%	2.20	6.20
2017	3,436	29	1	24	86%	2.10	5.83

2017 Custer State Park Antlerless Elk Harvest Projections

Last Revised: 22 March 2018

Unit/Type	Resident Licenses					Harvest Projections							Avg Satisfctn	Avg Days Hunted
	Appl. 1st Choice *	Avail.	Sold	Resp.	Success	Bulls	Cows	Bull Calves	Cow Calves	Total Elk Harvested	CI (95%)	Elk Shot Not Recovered	Score	Hunted
CU1-23	2,052	10	10	100%	90%	0	8	0	1	9	+/-0	1	5.10	2.8
CU2-23	982	10	9	100%	78%	1	6	0	0	7	+/-0	0	6.33	2.0
CU3-23	402	10	10	100%	90%	0	9	0	0	9	+/-0	0	6.10	1.5
Totals	3,436	30	29	100.0%	86.2%	1	23	0	1	25	+/-0	1	5.83	2.10

* Number of 1st drawing applicants with that unit as 1st choice.