

FIREARM ANTELOPE

A total of 3,007 licenses (2,945 resident; 62 nonresident) were available for the 2016 Firearm Antelope hunting season. Including Landowner Own Land licenses, a total of 3,328 licenses were sold representing 3,507 total tags. The 2016 season was open from October 1 - 16.

A random sample of 2,829 hunters was taken from total license sales and 2,292 surveys were returned for an 81% response rate. Approximately 65% of responses were received through the Internet.

Respondents reported hunting an average of 2.04 days each, which projected to 6,789 total recreation days for the season.

The harvest projection for the season was 2,051 adult bucks, 321 adult does, 61 buck-kids, and 29 doe-kids for a total of 2,461 antelope. The projected overall success for the season was 70%.

Harvest summaries for the 2007-2016 Firearm Antelope seasons

YEAR	Licenses Sold		Harvest			Success	Avg. Days Hunted	Average Satisfaction
	Resident	Nonres	Bucks	Does	Total			
2007	10,174	1,070	7,123	6,546	13,669	62%	2.23	5.28
2008	11,443	1,390	7,542	9,514	17,056	50%	2.43	5.11
2009	11,109	1,342	6,495	7,605	14,100	44%	2.36	4.50
2010	8,806	969	3,932	5,017	8,949	49%	2.49	4.69
2011	5,752	457	2,523	1,971	4,493	50%	2.18	4.54
2012	3,965	0	1,695	942	2,637	53%	2.05	4.79
2013	3,467	0	1,454	480	1,935	48%	1.76	4.72
2014	2,991	61	1,770	314	2,083	66%	1.99	5.12
2015	3,260	62	1,910	314	2,224	64%	2.08	5.23
2016	3,266	62	2,112	350	2,461	70%	2.04	5.42

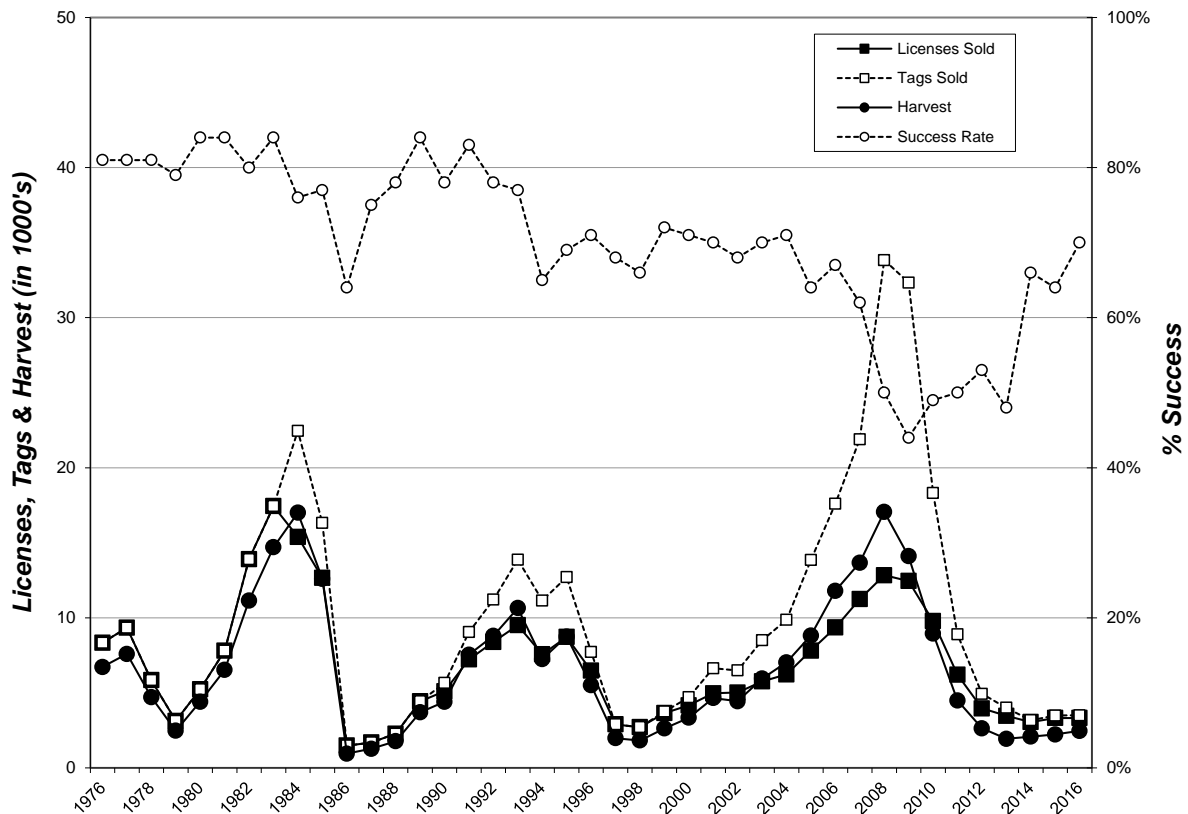
2016 Firearm Antelope Harvest Projections

Last Revised:
01/24/2017

Unit Description	Unit	Type	Residents			Nonresidents			Tags Sold	Response Rate	Unit/Subunit Success	Harvest Projections					Mean Satisf Score	Avg Days Hunted	
			Appl. 1st		Sold	Appl. 1st		Sold				Adults	Kids	Total	Harvest CI (95%)				
			Choice *	Available		Choice *	Available									Bucks			Does
Pennington E	02A	41	289	150	150	16	3	3	153	83%	59%	73	15	2	0	90	+/-5	4.63	2.34
Bennett/Oglala Lakota	11A	41	121	50	50	3	1	1	51	75%	66%	32	1	0	0	34	+/-4	5.30	1.84
Butte NW	15A	41	502	200	201	32	4	4	205	84%	81%	145	14	3	5	167	+/-6	5.50	1.85
Butte/Lawrence	15B	41	655	250	251	27	5	5	256	87%	78%	172	20	4	3	199	+/-8	5.48	1.92
Corson	20A	41	148	40	43	3	1	1	44	75%	58%	19	4	1	1	25	+/-4	5.20	2.03
Custer E /Penn C	21A	41	300	125	125	11	3	3	128	85%	61%	66	9	2	1	79	+/-4	5.16	2.81
Dewey	24A	41	71	30	30	5	1	1	31	87%	52%	10	5	1	0	16	+/-2	4.71	2.07
F River/Custer SW	27A	41	1,621	500	502	82	10	10	512	81%	75%	315	48	13	7	382	+/-21	5.40	2.15
Haakon	31A	41	134	100	100	3	2	2	102	78%	61%	57	5	0	0	62	+/-5	5.17	1.96
Harding W	35A	41	765	200	200	96	4	4	204	84%	82%	156	8	3	0	167	+/-6	5.49	1.79
Harding E	35B	41	493	150	150	44	3	3	153	87%	86%	122	10	0	0	132	+/-3	5.96	1.74
Hughes/Hyde	36A	41	110	40	40	3	1	1	41	76%	55%	22	0	0	0	22	+/-3	5.40	2.26
Jackson	39A	41	178	50	50	6	1	1	51	84%	53%	21	5	1	0	27	+/-3	4.34	2.28
Jones	41A	41	55	20	19	8	1	1	20	70%	21%	4	0	0	0	4	+/-2	3.92	3.36
Meade N	49A	41	749	400	400	71	8	8	408	82%	78%	264	42	11	0	317	+/-15	5.61	1.68
Meade S	49B	41	345	200	200	15	4	4	204	84%	81%	131	27	5	1	166	+/-6	5.76	2.19
Mellette	50A	41	50	20	20	4	1	1	21	67%	43%	6	3	0	0	9	+/-3	4.62	2.71
Perkins N	53A	41	295	100	101	40	2	2	103	76%	74%	70	5	0	1	77	+/-5	5.57	2.06
Perkins S	53B	41	449	150	150	41	3	3	153	77%	86%	123	8	0	0	131	+/-4	5.83	1.50
Stanley	58A	41	99	50	50	1	1	1	51	86%	57%	26	1	2	0	29	+/-3	5.23	1.86
Sully	59A	41	86	20	20	0	1	1	21	76%	75%	13	3	0	0	16	+/-2	5.71	2.00
Ziebach	64A	41	181	100	100	12	2	2	102	84%	77%	64	12	1	1	78	+/-3	5.49	1.86
Landowner Own Land	ST1	41	NA	Unltd	135	NA	0	0	135	80%	47%	59	5	0	0	64	+/-6	5.02	2.22
	ST1	48	NA	Unltd	179	NA	0	0	358	66%	47%	80	71	9	8	168	+/-19	4.75	2.53
Totals			7,696	2,945	3,266	523	62	62	3,507	81.0%	70%	2,051	321	61	29	2,461	+/-142	5.42	2.04

* Number of 1st drawing applicants with that season as 1st choice.

Firearm Antelope 1976-2016



2016 Antelope LOL Harvest Distribution

Last Revised:
24-Jan-17

County		Reported Harvest					Projected Harvest				Total	
		Bucks	Does	Buck kids	Doe kids	Total	Bucks	Does	Buck kids	Doe kids	Projected	%
Pennington E	02A	2	0	0	0	2	3	0	0	0	3	1.2%
Bennett/Oglala Lakota	11A	1	1	0	0	2	1	2	0	0	3	1.3%
Butte NW	15A	7	2	0	1	10	10	3	0	2	15	6.5%
Butte/Lawrence	15B	5	1	0	0	6	7	2	0	0	9	3.8%
Corson	20A	3	1	0	0	4	4	2	0	0	6	2.6%
Custer E /Penn C	21A	2	1	1	0	4	3	2	2	0	6	2.7%
Dewey	24A	2	0	0	0	2	3	0	0	0	3	1.2%
F River/Custer SW	27A	3	2	0	0	5	4	3	0	0	8	3.3%
Haakon	31A	6	0	0	0	6	9	0	0	0	9	3.7%
Harding W	35A	5	4	0	0	9	7	7	0	0	14	6.0%
Harding E	35B	4	5	1	0	10	6	8	2	0	16	6.9%
Hughes/Hyde	36A	3	0	0	0	3	4	0	0	0	4	1.9%
Jackson	39A	5	1	0	0	6	7	2	0	0	9	3.8%
Jones	41A	4	1	0	0	5	6	2	0	0	7	3.2%
Lyman	45A	0	0	0	0	0	0	0	0	0	0	0.0%
Ft Pr Nat Grslnd	45B	0	0	0	0	0	0	0	0	0	0	0.0%
Meade N	49A	16	7	2	1	26	23	12	4	2	40	17.2%
Meade S	49B	11	11	0	0	22	16	18	0	0	34	14.7%
Mellette	50A	1	1	0	0	2	1	2	0	0	3	1.3%
Perkins N	53A	5	3	0	2	10	7	5	0	3	15	6.6%
Perkins S	53B	5	3	1	1	10	7	5	2	2	16	6.7%
Stanley	58A	2	0	0	0	2	3	0	0	0	3	1.2%
Sully	59A	2	1	0	0	3	3	2	0	0	5	2.0%
Tripp	60A	0	0	0	0	0	0	0	0	0	0	0.0%
Walworth/Potter	63A	0	0	0	0	0	0	0	0	0	0	0.0%
Ziebach	64A	2	1	0	0	3	3	2	0	0	5	2.0%
Unknown		3	5	1	0	9						
TOTALS		99	51	6	5	161	139	76	9	8	232	

Any by county projected harvest values will differ from by unit projected harvest values due to incorrect sampling proportions within counties.
Use these figures for approximations only!