

WEST RIVER FIREARM DEER

There were 24,484 licenses issued for the 2016 West River Firearm Deer season (21,237 regular, 991 Special Buck and 2,256 Landowner Own Land Only) for a total of 28,054 tags.

The West River season was open 16 days from November 12-27 in most units. Units 50A in Mellette County and 30A in Gregory County were open from Nov. 5-8 and 21-27.

A random sample of 9,093 license holders was taken from the regular West River season, 2,189 from the Landowner Own Land Only licenses, and 990 from the Special Buck licenses. All hunters that listed an email address were surveyed using Qualtrics Software for the first attempt. Approximately 62% of regular season, 43% of Landowner Own Land, and 70% of Special Buck hunters surveyed through Qualtrics responded. All hunters who did not respond or did not supply an email address were mailed paper surveys which could be responded to either online or through the mail. Final response rates were 78% for regular West River Deer, 71% for Landowner Own Land and 86% for Special Buck. Of all responding hunters, 67% of regular West River, 50% of Landowner Own Land and 71% of Special Buck hunters responded over the Internet.

Respondents reported hunting an average of 3.25 days in the regular West River season, 4.01 days for landowner and 3.52 days in the Special Buck. These averages projected to a total of 77,348 recreation days for all West River firearm deer seasons.

The West River projected deer harvest was 14,283 for the regular season, 1,747 for landowner on own land, and 803 for the Special Buck licenses. Success rates were 53% for the regular season, 48% for landowner and 81% for Special Buck.

The mean satisfaction score for those responding to the regular West River season was 5.13 (1 being very dissatisfied and 7 very satisfied).

Summary comparison of the 2008-2016 West River Deer seasons (including Special Buck and Landowner)

YEAR	Licenses Sold				Harvest				Total	Tag Success	Avg Days	Avg Satis
	Resident		Nonres		Bucks		Does					
	Lics	Tags	Lics	Tags	WT	Mule	WT	Mule				
2008	26,533	48,770	4,064	7,256	8,621	7,560	8,081	6,256	30,518	54%	3.42	5.29
2009	26,999	61,947	4,391	9,798	10,319	7,224	10,036	7,281	34,862	49%	3.55	5.22
2010	27,655	59,674	4,259	9,146	11,009	5,759	11,665	5,537	33,970	49%	3.53	5.21
2011	25,917	57,091	3,978	8,645	11,139	4,456	12,301	3,901	31,797	48%	3.64	5.00
2012	22,511	44,080	3,143	6,173	8,606	3,650	8,946	2,391	23,594	47%	3.63	4.96
2013	22,422	44,118	3,216	6,257	7,749	3,358	5,785	1,678	18,570	37%	3.56	4.46
2014	20,736	23,533	2,035	2,216	7,646	3,246	2,415	334	13,642	53%	3.25	4.88
2015	20,417	23,405	2,394	2,547	9,091	3,673	2,521	246	15,528	60%	3.12	5.27
2016	21,974	28,565	2,510	3,086	8,789	3,885	3,805	354	16,384	53%	3.33	5.13

2016 West River Deer Harvest Projections

Last Revised:
07-Mar-17

Unit	Harvest Projections																		Total Deer	Mean Satisf	Average Days Hunted	
	Licenses				Tags sold	Response Hunters	Response Rate	Hunter Success	Tag Success	Whitetail				Mule Deer				Harvested				CI (95%)
	Resident		Nonresident							Bucks		Does		Bucks		Does						
	Avail.	Sold	Avail.	Sold						Adult	Fawn	Adult	Fawn	Adult	Fawn	Adult	Fawn					
Penn NE / Meade SE	600	601	48	46	862	647	79%	62%	51%	185	5	41	0	190	3	18	0	441	+/-41	5.20	3.45	
Pennington SE	150	153	12	12	165	165	80%	68%	68%	55	0	1	0	52	0	4	0	113	+/-7	5.41	3.02	
Bennett N	250	245	20	26	271	253	79%	56%	56%	93	0	17	0	33	0	8	0	152	+/-13	4.88	3.51	
Bennett S	225	225	18	18	243	243	76%	51%	51%	84	0	8	0	31	2	0	0	125	+/-12	4.67	3.65	
Butte	1,000	997	80	83	1,997	1,066	78%	73%	60%	486	65	468	65	102	0	4	4	1,193	+/-95	5.46	3.33	
Butte SW / Lawrence	800	798	64	67	1,567	845	78%	77%	59%	466	68	318	37	37	0	6	0	931	+/-75	5.70	3.86	
Corson	400	404	32	31	435	435	79%	57%	57%	194	2	16	0	35	0	2	0	249	+/-21	5.05	3.72	
Custer E / Penn S	300	301	24	24	325	325	77%	69%	69%	147	2	20	5	48	0	2	0	224	+/-15	5.27	3.98	
Custer C / Penn C	150	150	12	12	162	162	77%	66%	66%	45	3	28	3	26	1	1	0	107	+/-7	5.24	3.35	
Dewey	450	437	36	49	486	463	76%	50%	48%	133	7	59	2	31	2	0	0	234	+/-24	4.95	3.02	
Little Moreau	20	19	2	2	21	21	90%	68%	68%	7	0	7	1	0	0	0	0	14	+/-1	6.44	2.63	
FRiver NW/ Cust SW	100	100	8	8	108	108	84%	73%	73%	14	0	2	0	58	0	4	1	79	+/-4	5.23	3.84	
Fall River	500	503	40	38	541	539	76%	61%	61%	156	10	50	5	89	5	14	0	328	+/-26	4.91	3.21	
Fall River Special	20	21	2	2	23	23	96%	86%	86%	16	0	0	0	4	0	0	0	20	+/-1	4.81	3.27	
Gregory	1,700	1,701	136	135	3,345	1,836	77%	51%	36%	663	79	414	23	6	0	6	0	1,190	+/-158	4.64	3.50	
Haakon	850	845	68	75	920	908	80%	66%	65%	216	6	70	3	276	0	29	0	600	+/-42	5.28	3.39	
Harding W	650	633	52	69	702	609	78%	72%	69%	217	12	111	5	128	0	10	0	483	+/-31	5.57	2.62	
Harding E	500	477	40	54	531	444	77%	66%	66%	199	11	90	21	28	2	0	0	350	+/-25	5.49	2.70	
Harding Special	125	127	10	10	137	137	88%	76%	76%	28	0	0	0	72	1	2	0	104	+/-4	6.05	2.67	
Jackson N	250	249	20	20	269	269	80%	53%	53%	85	0	5	0	52	0	0	0	142	+/-12	4.61	3.06	
Jackson S	400	380	32	50	430	382	85%	65%	63%	128	0	11	0	123	2	9	0	272	+/-18	5.37	3.00	
Jones	550	517	44	76	970	543	76%	61%	45%	238	26	88	10	64	0	7	0	433	+/-48	4.91	3.75	
Lyman W	800	693	64	84	1,453	726	77%	54%	37%	297	25	161	25	34	0	0	0	542	+/-69	4.86	3.66	
Lyman E	250	231	20	16	247	247	79%	55%	55%	90	8	19	0	19	0	0	0	135	+/-11	4.86	3.30	
Lyman NE / Stanley SE	50	46	5	8	75	51	92%	51%	46%	5	1	15	2	8	0	3	0	35	+/-3	4.91	3.36	
Ft Pr Nat Grslnd	90	93	8	8	101	101	82%	61%	61%	50	0	0	1	11	0	0	0	62	+/-4	5.32	3.41	
Meade W	1,000	989	80	91	1,080	1,026	75%	64%	66%	445	4	96	4	140	4	18	0	710	+/-51	5.36	3.57	
Meade NE	1,400	1,331	112	178	1,509	1,307	73%	52%	49%	337	27	94	9	261	0	9	0	737	+/-76	5.20	2.77	
Mellette	1,050	1,016	84	116	1,132	1,031	78%	54%	52%	292	7	92	7	167	0	28	0	594	+/-55	5.02	2.72	
Perkins N	850	837	68	80	1,511	873	81%	70%	54%	332	24	269	27	145	3	9	0	810	+/-71	5.07	3.15	
Perkins S	1,200	1,132	96	162	2,048	1,165	78%	65%	49%	377	43	295	35	237	0	16	8	1,010	+/-100	5.11	2.94	
Stanley	550	552	44	42	594	546	82%	49%	47%	114	11	60	9	81	0	4	0	280	+/-28	4.79	3.20	
Oahe Dwnstrm	10	10	2	2	12	12	100%	64%	64%	3	2	2	0	0	0	0	0	8	+/-1	5.88	1.18	
Tripp	1,800	1,713	144	232	1,945	1,715	78%	57%	56%	602	53	264	32	127	0	16	0	1,092	+/-94	5.08	3.11	
Ziebach	500	470	40	72	542	507	78%	61%	60%	201	0	22	2	89	0	11	0	326	+/-26	5.30	2.81	
Oglala Lakota	75	75	6	6	81	81	75%	62%	62%	27	0	1	0	21	0	1	0	50	+/-5	5.21	2.97	
Todd	150	150	12	12	162	162	81%	67%	67%	72	1	10	0	22	0	2	0	108	+/-6	5.30	3.34	
Totals	19,765	19,221	1,585	2,016	27,002	19,973	78.5%	61%	53%	7,098	502	3,223	334	2,845	24	244	13	14,283	+/-1,280	5.13	3.25	

The response rate for all units combined was: **78%**

2016 West River Deer Harvest Projections

Unit/Type	Licenses							Harvest Projections										Total Deer Harvest
	Resident			Nonresident			Response Rate	Success 1st tag	Success 2nd tag	Whitetail				Mule Deer				
	Appl. 1st Choice *	Avail.	Sold	Appl. 1st Choice *	Avail.	Sold				Bucks		Does		Bucks		Does		
										Adult	Fawn	Adult	Fawn	Adult	Fawn	Adult	Fawn	
02A-01	635	400	402	92	32	30	81%	62%		66	0	2	0	182	3	18	0	269
02A-18	41	200	199	24	16	16	76%	60%	21%	119	5	38	0	8	0	0	0	173
02C-01	371	100	103	67	8	8	75%	72%		20	0	1	0	52	0	4	0	80
02C-11	24	50	50	7	4	4	88%	60%		35	0	0	0	0	0	0	0	33
11A-01	169	150	151	27	12	12	77%	62%		53	0	8	0	33	0	6	0	102
11A-11	3	100	94	4	8	14	71%	47%		40	0	9	0	0	0	2	0	50
11B-01	205	100	100	34	8	8	72%	58%		27	0	2	0	31	2	0	0	62
11B-11	28	125	125	13	10	10	79%	46%		57	0	6	0	0	0	0	0	63
15A-01	742	150	151	79	12	12	84%	85%		42	0	0	0	102	0	4	4	138
15A-18	443	650	650	64	52	52	76%	68%	47%	440	42	292	33	0	0	0	0	821
15A-19	31	200	196	16	16	19	78%	64%	38%	4	23	176	32	0	0	0	0	234
15B-01	347	150	151	42	12	12	82%	66%		78	2	2	0	33	0	3	0	108
15B-18	357	500	500	29	40	40	76%	73%	46%	388	28	197	9	4	0	0	0	629
15B-19	52	150	147	16	12	15	75%	71%	41%	0	37	118	28	0	0	4	0	195
20A-01	454	100	104	44	8	8	83%	76%		45	0	4	0	35	0	2	0	86
20A-11	140	300	300	52	24	23	77%	51%		149	2	12	0	0	0	0	0	164
21A-01	559	100	101	29	8	8	81%	68%		26	0	2	0	45	0	2	0	74
21A-11	181	200	200	14	16	16	76%	70%		121	2	18	5	4	0	0	0	151
21B-01	215	100	100	27	8	8	81%	73%		43	1	8	0	26	1	1	0	78
21B-13	5	50	50	2	4	4	67%	52%		2	1	20	3	0	0	0	0	28
24A-01	309	100	100	36	8	8	81%	48%		18	0	5	0	31	2	0	0	52
24A-11	99	250	250	39	20	20	72%	50%		115	3	17	0	0	0	0	0	134
24A-13	5	100	87	19	8	21	77%	44%		0	4	37	2	0	0	0	0	48
24B-11	62	10	9	9	1	1	90%	78%		7	0	1	0	0	0	0	0	8
24B-13	1	10	10	0	1	1	91%	60%		0	0	6	1	0	0	0	0	7
27A-01	405	100	100	39	8	8	84%	73%		14	0	2	0	58	0	4	1	79
27B-01	661	200	200	69	16	17	73%	68%		41	0	0	0	87	5	10	0	147
27B-11	55	200	200	8	16	16	76%	63%		115	5	17	2	0	0	0	0	137
27B-13	9	100	103	2	8	5	79%	41%		0	5	33	2	2	0	4	0	45
27L-01	89	10	11	7	1	1	92%	82%		6	0	0	0	4	0	0	0	10
27L-11	21	10	10	4	1	1	100%	91%		10	0	0	0	0	0	0	0	10
30A-01	529	150	150	49	12	12	86%	44%		60	0	13	0	0	0	0	0	72
30A-18	436	600	599	91	48	47	76%	44%	25%	269	21	161	0	0	0	0	0	449
30A-19	13	100	100	8	8	8	67%	38%	25%	0	7	40	12	0	0	6	0	68
30B-01	457	150	153	72	12	12	89%	46%		72	0	0	0	6	0	0	0	75
30B-18	520	600	600	101	48	48	79%	45%	27%	262	43	156	10	0	0	0	0	471
30B-19	33	100	99	11	8	8	50%	33%	17%	0	9	44	0	0	0	0	0	54
31A-01	900	600	602	140	48	48	79%	69%		125	0	11	0	276	0	26	0	446
31A-11	8	150	150	17	12	12	83%	59%		91	0	3	3	0	0	0	0	96
31A-13	6	100	93	7	8	15	82%	54%		0	6	55	0	0	0	3	0	59
35A-01	667	200	201	129	16	16	83%	79%		32	0	5	0	128	0	6	0	172
35A-11	39	250	249	29	20	20	76%	73%		177	5	17	0	0	0	0	0	196
35A-13	4	200	183	4	16	33	58%	53%		8	7	89	5	0	0	4	0	115
35C-01	319	50	52	40	4	4	90%	68%		11	0	2	0	25	0	0	0	38
35C-11	98	250	248	24	20	20	73%	77%		184	0	9	0	3	2	0	0	206
35C-13	1	200	177	1	16	30	68%	51%		4	11	79	21	0	0	0	0	106
35L-01	810	125	127	126	10	10	88%	76%		28	0	0	0	72	1	2	0	104
39A-01	350	150	149	49	12	12	82%	57%		41	0	1	0	51	0	0	0	92
39A-11	27	100	100	14	8	8	77%	46%		44	0	3	0	2	0	0	0	50
39B-01	261	250	250	43	20	19	83%	66%		54	0	0	0	116	2	9	0	178
39B-11	4	150	130	11	12	31	81%	58%		73	0	11	0	7	0	0	0	94
41A-01	365	200	200	89	16	16	76%	64%		66	0	6	0	64	0	5	0	139
41A-18	40	350	317	27	28	60	71%	50%	29%	172	26	83	10	0	0	2	0	294
45A-01	373	100	97	63	8	4	78%	61%		29	0	0	0	31	0	0	0	62
45A-18	138	550	480	50	44	55	77%	51%	24%	264	21	115	15	3	0	0	0	417
45A-19	8	150	116	5	12	25	67%	23%	13%	4	5	46	11	0	0	0	0	63
45B-01	272	50	47	32	4	4	64%	63%		6	0	4	0	19	0	0	0	32
45B-11	190	200	184	22	16	12	84%	53%		84	8	15	0	0	0	0	0	103
45C-01	49	30	30	10	3	3	97%	51%		5	0	1	0	8	0	3	0	17
45C-19	3	20	16	2	2	5	83%	53%	27%	0	0	14	2	0	0	0	0	18
45D-01	228	30	33	24	3	3	72%	69%		13	0	0	0	11	0	0	0	25
45D-11	129	60	60	16	5	5	88%	57%		37	0	0	1	0	0	0	0	37
49A-01	599	700	700	103	56	56	74%	69%		332	0	31	0	132	4	18	0	520
49A-11	33	200	196	3	16	20	79%	55%		103	0	12	0	3	0	0	0	118
49A-13	6	100	93	5	8	15	68%	66%		10	4	52	4	4	0	0	0	72
49B-01	791	700	701	140	56	56	76%	59%		182	0	5	0	251	0	0	0	447
49B-11	12	400	360	19	32	70	67%	39%		154	0	5	0	10	0	0	0	166
49B-13	5	300	270	0	24	52	56%	39%		0	27	85	9	0	0	9	0	124
50A-01	382	150	150	22	12	12	83%	62%		38	0	4	0	55	0	8	0	101
50A-11	24	200	202	35	16	14	77%	35%		60	3	0	0	0	0	8	0	76
50A-13	1	100	87	1	8	21	65%	28%		0	4	25	0	0	0	0	0	31
50B-01	470	250	251	76	20	19	79%	68%		65	0	0	0	113	0	13	0	183
50B-11	26	250	247	24	20	22	68%	52%		120	0	13	0	0	0	0	0	140
50B-13	7	100	79	0	8	28	83%	59%		9	0	50	7	0	0	0	0	63

(Continued next page)

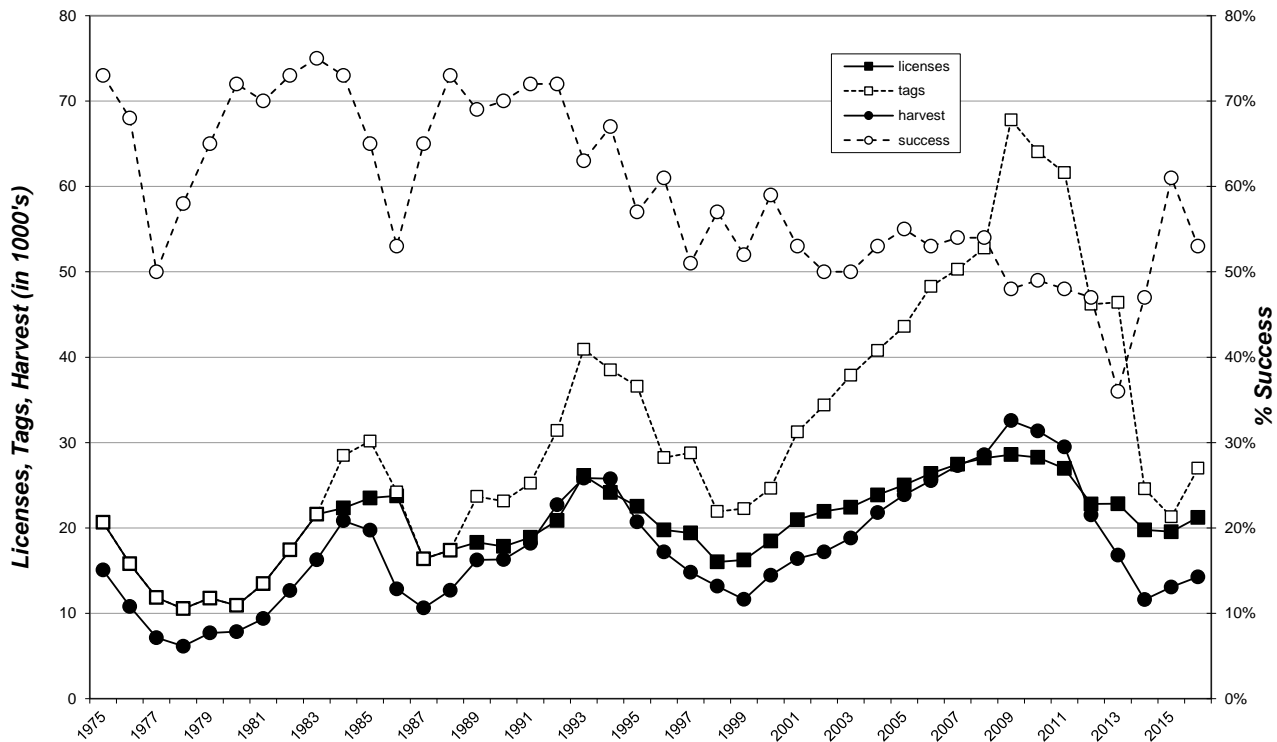
(continued from previous page)

Unit/Type	Licenses						Harvest Projections											Total Deer Harvest	
	Resident			Nonresident			Response Rate	Success			Whitetail				Mule Deer				
	Appl. 1st Choice *	Avail.	Sold	Appl. 1st Choice *	Avail.	Sold		1st tag	2nd tag	Bucks	Does	Adult	Fawn	Bucks	Does	Adult	Fawn		
53A-01	836	300	299	119	24	24	81%	80%		102	0	0	0	142	0	6	0	258	
53A-18	149	350	350	48	28	28	81%	62%	38%	226	10	132	7	3	3	3	0	378	
53A-19	2	200	188	14	16	28	74%	47%	24%	4	14	137	20	0	0	0	0	173	
53C-01	635	500	500	107	40	40	80%	74%		151	0	4	0	231	0	16	8	402	
53C-18	80	400	387	33	32	45	73%	52%	31%	214	25	113	7	0	0	0	0	364	
53C-19	2	300	245	14	24	77	69%	46%	20%	12	18	178	27	6	0	0	0	244	
58A-01	684	150	151	81	12	12	88%	70%		24	0	2	0	81	0	4	0	113	
58A-11	66	200	199	20	16	16	80%	45%		90	0	9	0	0	0	0	0	97	
58A-13	10	200	202	1	16	14	72%	32%		0	11	49	9	0	0	0	0	69	
58D-01	10	5	5	0	1	1	100%	67%		3	0	1	0	0	0	0	0	4	
58D-03	5	5	5	1	1	1	83%	60%		0	2	1	0	0	0	0	0	4	
60A-01	1,242	600	601	154	48	48	77%	61%		229	0	23	0	115	0	16	0	394	
60A-11	154	700	700	90	56	56	77%	58%		363	10	52	0	12	0	0	0	440	
60A-13	21	500	412	33	40	128	65%	48%		9	43	189	32	0	0	0	0	258	
64A-01	273	300	300	73	24	24	79%	70%		119	0	15	2	81	0	8	0	226	
64A-11	2	200	170	8	16	48	74%	46%		82	0	8	0	8	0	3	0	101	
65A-01	79	75	75	19	6	6	75%	62%		27	0	1	0	21	0	1	0	50	
67A-01	132	150	150	20	12	12	82%	67%		72	1	10	0	22	0	2	0	108	
Totals	20,728	19,765	19,221	3,483	1,585	2,016	77.1%			7,098	502	3,223	334	2,845	24	244	13	14,283	

* Number of 1st drawing applicants with that season as 1st choice.

West River Deer Regular Season 1975-2016

(does not include Special Buck or Landowner Own Land)



2016 West River LOL Harvest Projections

Last Revised: 26-Apr-17

Unit/Type	Harvest Projections																
	Licenses		Tags sold	Response Rate	Hunter Success	Tag Success	Whitetail				Mule Deer				Total Deer Harvest	Mean Satisfactn Rating	Average Days Hunted
	Avail.	Sold					Bucks		Does		Bucks		Does				
WR1-01	Unltd	854	854	71%	54%	54%	248	7	23	1	171	0	7	0	459	5.23	4.03
WR1-08	Unltd	1,402	2,804	67%	66%	46%	474	121	199	23	304	81	77	9	1,288	5.25	3.99
Totals		2,256	3,658	68.6%	61%	48%	722	128	223	24	475	81	84	9	1,747	5.24	4.01

2016 West River LOL Harvest Distribution by Management Unit

Last Revised: 26-Apr-17

Unit	Reported Harvest								Projected Harvest								Estimate	%	
	Whitetail				Mule Deer				Whitetail				Mule Deer						
	Bucks		Does		Bucks		Does		Bucks		Does		Bucks		Does				
	Adult	Fawn	Adult	Fawn	Adult	Fawn	Adult	Fawn	Adult	Fawn	Adult	Fawn	Adult	Fawn	Adult	Fawn			
02A (NE Penn/SE Meade)	14	1	6	2	15	0	2	3	43	21	2	9	3	23	0	3	5	65	3.7%
02C (SE Pennington)	9	0	4	0	8	1	4	0	26	14	0	6	0	12	2	6	0	39	2.3%
11A (N Bennett)	8	0	0	0	2	0	1	0	11	12	0	0	0	3	0	2	0	17	1.0%
11B (S Bennett)	4	1	1	0	7	3	1	0	17	6	2	2	0	11	5	2	0	26	1.5%
15A (Butte)	27	10	12	1	21	2	0	0	73	41	15	18	2	32	3	0	0	111	6.3%
15B (SW Butte/Lawrence)	22	5	9	2	8	2	1	0	49	33	8	14	3	12	3	2	0	74	4.3%
20A (Corson)	8	1	0	1	11	2	3	1	27	12	2	0	2	17	3	5	2	41	2.3%
21A (E Custer/S Penn)	10	2	2	0	8	1	0	0	23	15	3	3	0	12	2	0	0	35	2.0%
21B (C Custer/C Penn)	4	1	0	0	0	0	0	0	5	6	2	0	0	0	0	0	0	8	0.4%
24A (Dewey)	6	2	0	0	10	1	3	0	22	9	3	0	0	15	2	5	0	33	1.9%
27A (NW FRiver/SW Cust)	5	2	2	0	5	1	0	0	15	8	3	3	0	8	2	0	0	23	1.3%
27B (Fall River)	6	3	2	0	6	4	0	1	22	9	5	3	0	9	6	0	2	33	1.9%
30A,B (Gregory)	79	19	34	2	16	2	0	0	152	120	29	52	3	24	3	0	0	231	13.2%
31A (Haakon)	32	2	8	1	24	2	6	0	75	48	3	12	2	36	3	9	0	114	6.5%
35A (W Harding)	10	4	2	0	7	1	1	0	25	15	6	3	0	11	2	2	0	38	2.2%
35C (E Harding)	6	1	3	0	9	0	2	0	21	9	2	5	0	14	0	3	0	32	1.8%
39A (N Jackson)	10	0	1	0	8	0	0	0	19	15	0	2	0	12	0	0	0	29	1.6%
39B (S Jackson)	9	1	4	0	12	1	2	0	29	14	2	6	0	18	2	3	0	44	2.5%
41A (Jones)	14	4	4	0	13	1	2	0	38	21	6	6	0	20	2	3	0	58	3.3%
45A (W Lyman)	22	2	2	1	15	4	4	0	50	33	3	3	2	23	6	6	0	76	4.3%
45B (E Lyman)	2	1	0	0	2	1	0	0	6	3	2	0	0	3	2	0	0	9	0.5%
45C (NE Lyman/SE Stanley)	2	0	0	0	1	0	0	0	3	3	0	0	0	2	0	0	0	5	0.3%
45D (Ft Pr Nat Grslnd)	4	0	1	0	1	0	1	0	7	6	0	2	0	2	0	2	0	11	0.6%
49A (W Meade)	27	3	9	0	10	7	2	1	59	41	5	14	0	15	11	3	2	90	5.1%
49B (NE Meade)	19	1	6	1	19	2	3	0	51	29	2	9	2	29	3	5	0	77	4.4%
50A,B (Mellette)	13	2	3	0	5	2	2	0	27	20	3	5	0	8	3	3	0	41	2.3%
53A (N Perkins)	16	2	1	0	12	0	5	0	36	24	3	2	0	18	0	8	0	55	3.1%
53C (S Perkins)	7	1	5	1	14	7	3	0	38	11	2	8	2	21	11	5	0	58	3.3%
58A (Stanley)	13	1	3	2	18	1	2	0	40	20	2	5	3	27	2	3	0	61	3.5%
60A (Tripp)	51	10	17	0	17	2	4	0	101	77	15	26	0	26	3	6	0	153	8.8%
64A (Ziebach)	7	1	0	0	7	1	0	0	16	11	2	0	0	11	2	0	0	24	1.4%
65A (Oglala Lakota)	0	1	1	0	1	0	1	0	4	0	2	2	0	2	0	2	0	6	0.3%
67A (Todd)	11	0	3	2	3	2	0	0	21	17	0	5	3	5	3	0	0	32	1.8%
Unknown	3	0	1	0	1	0	0	0	5										
TOTALS		480	84	146	16	316	53	55	6	1,156	722	128	223	24	475	81	84	9	1,747

Any by management unit projected harvest values will differ from statewide projected harvest values due to incorrect sampling proportions within units. Use these figures for approximations only! All unknown harvest locations were assigned the license holder's county of residence, if possible.

2016 West River Special Buck Harvest Projections

Unit/Type	Licenses						Harvest Projections											Total Deer Harvest	Mean Satisfactn Rating	Average Days Hunted			
	Resident			Nonresident			Whitetail						Mule Deer										
	Appl. 1st Choice *	Avail.	Sold	Appl. 1st Choice *	Avail.	Sold	Tags sold	Response Rate	Tag Success	Bucks			Does			Bucks					Does		
										Adult	Fawn	Adult	Fawn	Adult	Fawn	Adult	Fawn				Adult	Fawn	
WR-01	773	500	497	881	500	494	991	83%	81%	336	1	1	0	457	2	5	0	803	5.79	3.52			

2016 West River Special Buck Harvest Distribution

Unit	Reported Harvest										Projected Harvest								Total Estimate	%
	Whitetail				Mule Deer				Whitetail				Mule Deer							
	Bucks		Does		Bucks		Does		Bucks		Does		Bucks		Does					
	Adult	Fawn	Adult	Fawn	Adult	Fawn	Adult	Fawn	Adult	Fawn	Adult	Fawn	Adult	Fawn	Adult	Fawn				
02A (NE Penn/SE Meade)	11	0	0	0	40	1	0	0	52	14	0	0	0	53	1	0	0	69	8.5%	
02C (SE Pennington)	7	0	0	0	12	0	1	0	20	9	0	0	0	16	0	2	0	27	3.4%	
11A (N Bennett)	3	0	0	0	2	0	0	0	5	4	0	0	0	3	0	0	0	6	0.8%	
11B (S Bennett)	1	0	0	0	3	0	0	0	4	1	0	0	0	4	0	0	0	5	0.7%	
15A (Butte)	11	0	0	0	23	0	0	0	34	14	0	0	0	31	0	0	0	45	5.6%	
15B (SW Butte/Lawrence)	13	0	0	0	3	0	0	0	16	17	0	0	0	4	0	0	0	21	2.6%	
20A (Corson)	4	0	0	0	16	0	0	0	20	5	0	0	0	21	0	0	0	26	3.3%	
21A (E Custer/S Penn)	9	0	0	0	11	0	0	0	20	11	0	0	0	15	0	0	0	26	3.3%	
21B (C Custer/C Penn)	2	0	0	0	2	0	0	0	4	3	0	0	0	3	0	0	0	5	0.6%	
24A (Dewey)	2	0	0	0	1	0	0	0	3	3	0	0	0	1	0	0	0	4	0.5%	
27A (NW FRiver/SW Cust)	3	0	0	0	6	0	0	0	9	4	0	0	0	8	0	0	0	12	1.5%	
27B (Fall River)	9	0	0	0	7	0	0	0	16	11	0	0	0	9	0	0	0	21	2.6%	
30A,B (Gregory)	45	1	1	0	6	0	0	0	53	57	1	1	0	8	0	0	0	68	8.4%	
31A (Haakon)	10	0	0	0	20	0	0	0	30	13	0	0	0	27	0	0	0	39	4.9%	
35A (W Harding)	10	0	0	0	30	1	0	0	41	13	0	0	0	40	1	0	0	54	6.7%	
35C (E Harding)	5	0	0	0	12	0	0	0	17	6	0	0	0	16	0	0	0	22	2.8%	
39A (N Jackson)	3	0	0	0	5	0	0	0	8	4	0	0	0	7	0	0	0	10	1.3%	
39B (S Jackson)	11	0	0	0	15	0	1	0	27	14	0	0	0	20	0	2	0	36	4.5%	
41A (Jones)	17	0	0	0	7	0	0	0	24	22	0	0	0	9	0	0	0	31	3.9%	
45A (W Lyman)	9	0	0	0	7	0	0	0	16	11	0	0	0	9	0	0	0	21	2.6%	
45B (E Lyman)	4	0	0	0	5	0	0	0	9	5	0	0	0	7	0	0	0	12	1.5%	
45C (NE Lyman/SE Stanley)	3	0	0	0	2	0	0	0	5	4	0	0	0	3	0	0	0	6	0.8%	
45D (Ft Pr Nat Grslnd)	0	0	0	0	1	0	0	0	1	0	0	0	0	1	0	0	0	1	0.2%	
49A (W Meade)	9	0	0	0	12	0	0	0	21	11	0	0	0	16	0	0	0	27	3.4%	
49B (NE Meade)	10	0	0	0	23	0	0	0	33	13	0	0	0	31	0	0	0	43	5.4%	
50A,B (Mellette)	9	0	0	0	7	0	0	0	16	11	0	0	0	9	0	0	0	21	2.6%	
53A (N Perkins)	6	0	0	0	7	0	0	0	13	8	0	0	0	9	0	0	0	17	2.1%	
53C (S Perkins)	7	0	0	0	19	0	0	0	26	9	0	0	0	25	0	0	0	34	4.3%	
58A (Stanley)	13	0	0	0	14	0	0	0	27	17	0	0	0	19	0	0	0	35	4.4%	
60A (Tripp)	12	0	0	0	13	0	0	0	25	15	0	0	0	17	0	0	0	33	4.1%	
64A (Ziebach)	5	0	0	0	9	0	0	0	14	6	0	0	0	12	0	0	0	18	2.3%	
65A (Oglala Lakota)	0	0	0	0	2	0	0	0	2	0	0	0	0	3	0	0	0	3	0.3%	
67A (Todd)	1	0	0	0	1	0	0	0	2	1	0	0	0	1	0	0	0	3	0.3%	
Unknown	15	0	0	0	36	0	2	0	53											
TOTALS	279	1	1	0	379	2	4	0	666	336	1	1	0	457	2	5	0	803		

Any by management unit projected harvest values will differ from statewide projected harvest values due to incorrect sampling proportions within units.
 Use these figures for approximations only!