

EAST RIVER FIREARM DEER

There were 31,807 licenses issued for the 2016 East River Firearm Deer season (26,238 regular, 549 Special Buck and 5,020 Landowner Own Land Only) for a total of 45,906 tags.

The East River season was open 16 days from November 19 through December 4 in all units. The season was also open from December 31, 2016 - January 8, 2017 for all unfilled antlerless deer tags.

A random sample of 12,667 hunters was taken from the regular East River season, 2,784 from the Landowner Own Land Only licenses, and all 549 Special Buck hunters. All hunters that listed an email address were surveyed using Qualtrics Software prior to sending paper surveys. Approximately 49% of regular season, 34% of Landowner Own Land, and 69% of Special Buck hunters surveyed through Qualtrics responded. All hunters who did not respond or did not supply an email address were mailed paper surveys which could be responded to either online or through the mail. Final response rates were 75% for regular East River Deer, 66% for Landowner Own Land and 82% for Special Buck. Of all responding hunters, 56% of regular East River, 41% of Landowner Own Land and 70% of Special Buck hunters responded through the Internet.

Respondents reported hunting an average of 4.16 days per hunter for the regular season, 4.49 days for Landowner Own Land and 5.09 days for Special Buck, resulting in a projected total of 134,371 recreation days for the entire East River season. Hunters reported harvesting approximately 93% of their deer during the regular season and 7% from December 31 - January 8.

The East River projected deer harvest was 16,163 for the regular season, 2,627 for Landowner Own Land, and 317 for the Special Buck season. Success rates were 43% for the regular season, 33% for Landowner Own Land, and 58% for Special Buck. Success for the regular East River season “any deer and any antlerless deer” and “any whitetail and antlerless whitetail” license 1st tags (any) was 50% and success for 2nd (antlerless only) tags was 31%. Success for “any antlerless deer and any antlerless deer” and “antlerless whitetail and antlerless whitetail” license 1st tags was 53% and success for 2nd tags was 28%.

The mean satisfaction score for those responding to the regular East River survey was 4.70, for the Landowner Own Land survey was 4.35, and for the Special Buck survey was 5.03 (1 = “very dissatisfied” and 7 = “very satisfied”).

Summary comparison of the 2008-2016 East River Deer seasons (including Special Buck and Landowner)

YEAR	Licenses Sold				Harvest				Total Harvest	Success	Avg Days	Avg Satis
	Resident		Nonres		Bucks		Does					
	Lics	Tags	Lics	Tags	WT	Mule	WT	Mule				
2008	47,308	73,592	1,672	3,191	16,951	646	20,239	642	38,478	50%	4.79	4.71
2009	46,533	74,613	1,797	3,663	13,733	511	17,741	735	32,717	42%	4.53	4.41
2010	47,154	76,549	1,892	4,245	17,300	496	21,595	539	39,929	49%	4.28	4.95
2011	45,589	75,512	1,950	4,461	14,970	502	19,401	513	35,386	44%	4.73	4.51
2012	37,865	58,693	1,419	2,813	13,522	383	14,153	337	28,394	46%	4.23	4.64
2013	37,137	56,030	1,366	2,715	10,733	278	10,592	256	21,858	37%	4.44	4.19
2014	31,037	37,835	912	1,326	12,213	376	6,673	86	19,347	49%	4.10	4.80
2015	32,287	40,420	836	1,276	13,060	369	7,331	104	20,866	50%	4.15	4.96
2016	31,048	44,311	759	1,595	10,659	359	7,972	117	19,107	42%	4.16	4.70

2016 East River Deer Harvest Projections

Last Revised:

27-Apr-17

Harvest Projections

Unit	Licenses				Tags sold	Response Hunters	Rate	Hunter Success	Tag Success	Whitetail				Mule Deer				Total Deer Harvested	CI (95%)	Mean Satisf	Average Days Hunted		
	Resident		Nonresident							Bucks	Does	Bucks	Does	Adult	Fawn	Adult	Fawn					Adult	Fawn
	Avail.	Sold	Avail.	Sold																			
Minnehaha	650	642	leftovers	0	642	642	72%	37%	37%	145	8	78	3	0	0	0	0	234	+/-32	4.61	4.75		
Brown	2,200	2,106	leftovers	62	2,168	2,014	74%	46%	45%	438	76	413	19	6	6	6	0	966	+/-109	4.61	4.55		
Beadle	1,050	1,006	leftovers	0	1,249	1,006	73%	46%	41%	252	34	195	38	0	0	0	0	518	+/-63	4.52	4.53		
Codington	250	244	leftovers	0	244	244	77%	47%	47%	89	0	21	2	0	0	3	0	114	+/-12	5.01	5.54		
Brookings	550	543	leftovers	0	543	543	81%	50%	50%	188	9	65	7	0	0	2	0	270	+/-25	4.81	4.75		
Yankton	250	220	leftovers	0	220	220	80%	49%	49%	82	4	21	0	1	0	0	0	109	+/-10	4.90	4.67		
Yankton SW	75	69	leftovers	0	69	69	76%	50%	50%	0	5	24	5	0	0	0	0	35	+/-5	4.57	3.69		
Davison	300	268	leftovers	0	268	268	70%	20%	20%	36	4	11	0	2	0	0	0	53	+/-12	3.55	4.63		
Aurora	950	556	leftovers	0	983	556	69%	41%	29%	89	46	121	24	0	0	0	0	281	+/-48	3.98	3.91		
Bon Homme	200	174	leftovers	0	174	174	81%	42%	42%	57	4	11	1	0	0	0	0	73	+/-8	4.47	4.42		
Bon Homme SE	50	47	leftovers	0	47	47	70%	41%	41%	0	6	12	1	0	0	0	0	19	+/-5	5.26	2.47		
Brule	1,150	971	leftovers	0	1,675	971	70%	39%	26%	190	30	152	19	46	4	4	0	444	+/-78	3.80	3.30		
Buffalo	400	226	leftovers	0	354	226	66%	43%	32%	62	5	27	4	16	0	0	0	115	+/-20	4.19	2.69		
Campbell	720	574	leftovers	115	1,358	642	72%	67%	44%	226	39	304	25	6	0	0	0	600	+/-70	5.14	4.15		
Charles Mix	550	498	leftovers	0	498	498	77%	38%	38%	108	4	40	4	25	2	4	0	188	+/-24	3.98	3.02		
Clark	600	596	leftovers	0	596	596	76%	52%	52%	260	3	43	5	0	0	0	0	311	+/-29	5.14	4.42		
Clay	200	195	leftovers	0	195	195	80%	49%	49%	73	6	17	0	0	0	0	0	96	+/-9	4.95	4.80		
Day	600	596	leftovers	0	596	596	75%	56%	56%	279	0	56	0	0	0	0	0	335	+/-30	5.03	4.30		
Deuel	400	396	leftovers	0	396	396	81%	54%	54%	169	2	38	4	2	0	0	0	214	+/-18	4.84	4.77		
Douglas	325	276	leftovers	0	276	276	77%	29%	29%	43	2	27	2	2	0	5	0	80	+/-12	3.31	3.67		
Edmunds	1,300	1,164	leftovers	127	2,582	1,218	69%	63%	47%	371	118	625	91	0	5	0	0	1,209	+/-136	4.75	3.95		
Faulk	1,400	1,142	leftovers	159	3,903	1,253	70%	63%	38%	294	106	840	207	0	0	18	0	1,464	+/-198	4.69	3.86		
Grant	300	298	leftovers	0	298	298	81%	52%	52%	108	10	25	12	0	0	0	0	155	+/-14	5.03	5.25		
Hamlin	600	598	leftovers	0	598	598	79%	47%	47%	217	5	56	5	0	0	0	0	283	+/-29	5.12	4.45		
Hand	870	725	leftovers	0	1,431	725	74%	69%	49%	257	41	371	29	6	0	0	0	705	+/-72	5.31	3.66		
Hanson	300	277	leftovers	0	277	277	75%	37%	37%	84	2	15	2	0	0	0	0	103	+/-13	4.06	4.51		
Hughes	600	527	leftovers	0	663	527	78%	49%	44%	159	7	82	11	27	0	5	0	291	+/-32	4.89	4.03		
Hutchinson	100	88	leftovers	0	88	88	89%	39%	39%	27	1	6	0	0	0	0	0	34	+/-3	4.39	4.79		
Hyde	920	637	leftovers	44	1,342	667	68%	60%	40%	276	30	212	21	0	0	0	0	540	+/-71	4.85	3.38		
Jerauld	700	435	leftovers	0	789	435	72%	45%	31%	113	18	107	9	0	0	0	0	246	+/-38	4.66	3.71		
Kingsbury	700	691	leftovers	0	691	691	71%	45%	45%	215	18	74	6	0	0	0	0	312	+/-36	4.52	4.24		
Lake	450	444	leftovers	0	444	444	77%	51%	51%	130	4	84	4	0	0	2	0	225	+/-22	4.72	5.18		
Lincoln	200	196	leftovers	0	196	196	75%	45%	45%	63	3	20	2	0	0	0	0	87	+/-10	4.79	4.72		
McCook	450	437	leftovers	0	437	437	75%	46%	46%	137	4	54	6	0	0	0	0	201	+/-22	4.62	4.82		
McPherson	1,000	891	leftovers	98	1,978	964	75%	71%	55%	286	71	611	99	7	7	4	0	1,084	+/-99	5.20	3.68		
Marshall	500	492	leftovers	0	492	492	71%	55%	55%	217	12	41	2	0	0	0	0	273	+/-26	5.01	4.31		
Miner	900	792	leftovers	0	839	792	76%	35%	34%	163	9	109	6	0	0	0	0	287	+/-39	4.37	3.60		
Moody	450	444	leftovers	0	444	444	81%	49%	49%	150	10	52	4	0	0	0	0	216	+/-21	5.00	4.55		
Potter	1,050	931	leftovers	57	1,830	910	75%	63%	50%	329	20	453	67	24	0	13	7	913	+/-91	5.12	3.64		
Roberts	500	498	leftovers	0	498	498	85%	55%	55%	207	10	53	4	0	0	0	0	274	+/-22	4.58	5.28		
Sanborn	900	530	leftovers	0	574	530	69%	33%	31%	107	16	49	8	0	0	0	0	179	+/-29	4.14	3.89		
Spink	1,300	1,249	leftovers	20	1,269	1,235	72%	54%	55%	423	26	240	13	0	0	0	0	703	+/-65	4.94	3.74		
W Sully	550	438	leftovers	0	738	438	70%	58%	40%	154	12	60	5	65	2	0	0	297	+/-39	4.85	2.94		
E Sully	470	349	leftovers	0	680	349	75%	59%	39%	152	12	93	8	0	0	0	0	264	+/-34	4.49	3.27		
Turner	100	95	leftovers	0	95	95	74%	40%	40%	31	0	5	1	0	0	0	0	38	+/-6	4.51	5.03		
Union	250	241	leftovers	0	241	241	82%	47%	47%	89	4	19	0	0	0	0	0	113	+/-11	5.02	4.57		
Walworth	750	667	leftovers	77	1,436	713	76%	60%	43%	224	48	274	45	20	0	0	3	612	+/-70	4.99	3.47		
Totals	29,080	25,479	leftovers	759	37,404	25,734	74.6%	51%	43%	7,772	902	6,304	829	253	26	67	10	16,163	+/-1,861	4.70	4.16		

The response rate for all units combined was: **75%**

2016 East River Deer harvest by date

	Total	Nov 19 - Dec 4	Dec 31 - Jan 8
Reports	5,171	4,825	346
Percent of total		93%	7%
Projected	16,163	15,082	1,082

2016 East River Deer antlerless harvest by date

	Total	Nov 19 - Dec 4	Dec 31 - Jan 8
Percent of total		87%	13%
Projected	8,138	7,056	1,082

2016 East River Deer Harvest Projections

Unit/Type	Licenses						Harvest Projections											Total Deer			
	Resident			Nonresident			Response			Success			Whitetail				Mule Deer				
	Appl. 1st Choice *	Avail.	Sold	Avail.	Sold	Rate	1st tag	2nd tag	3rd tag	Bucks		Does		Bucks		Does					
										Adult	Fawn	Adult	Fawn	Adult	Fawn	Adult	Fawn				
01A-01	1,023	550	544	leftovers	0	73%	36%				145	3	47	3	0	0	0	0	197		
01A-03	53	100	98	leftovers	0	63%	38%				0	6	31	0	0	0	0	0	37		
03A-01	1,833	1,000	981	leftovers	0	80%	52%				432	0	76	6	6	0	0	0	512		
03A-03	94	1,200	1,125	leftovers	62	66%	38%				7	76	336	13	0	6	6	0	454		
04A-11	824	600	574	leftovers	0	75%	43%				225	3	23	7	0	0	0	0	249		
04A-13	21	200	189	leftovers	0	73%	32%				0	7	44	7	0	0	0	0	60		
04A-18	248	50	50	leftovers	0	64%	44%	44%			23	5	15	0	0	0	0	0	43		
04A-19	41	200	193	leftovers	0	70%	61%	28%			4	19	113	24	0	0	0	0	167		
05A-01	773	250	244	leftovers	0	77%	47%				89	0	21	2	0	0	3	0	114		
06A-01	1,046	450	446	leftovers	0	81%	49%				186	5	21	7	0	0	0	0	220		
06A-03	35	100	97	leftovers	0	79%	52%				2	4	44	0	0	0	2	0	51		
07A-01	629	250	220	leftovers	0	80%	49%				82	4	21	0	1	0	0	0	109		
07B-03	29	75	69	leftovers	0	76%	50%				0	5	24	5	0	0	0	0	35		
08A-11	390	300	268	leftovers	0	70%	20%				36	4	11	0	2	0	0	0	53		
10A-11	147	50	41	leftovers	0	81%	23%				7	0	2	0	0	0	0	0	9		
10A-13	23	200	88	leftovers	0	70%	28%				0	9	14	2	0	0	0	0	25		
10A-18	424	400	296	leftovers	0	64%	33%	31%			82	21	60	20	0	0	0	0	186		
10A-19	27	300	131	leftovers	0	74%	37%	12%			0	15	45	2	0	0	0	0	61		
12A-11	419	200	174	leftovers	0	81%	42%				57	4	11	1	0	0	0	0	73		
12B-13	25	50	47	leftovers	0	70%	41%				0	6	12	1	0	0	0	0	19		
13A-01	586	300	267	leftovers	0	71%	37%				48	4	0	0	46	0	4	0	100		
13A-18	355	700	586	leftovers	0	69%	25%	23%			137	23	109	11	0	0	0	0	281		
13A-19	26	150	118	leftovers	0	68%	37%	13%			4	4	43	8	0	4	0	0	63		
14A-01	105	100	98	leftovers	0	76%	47%				31	0	1	0	16	0	0	0	46		
14A-18	52	250	125	leftovers	0	56%	29%	21%			31	4	23	2	0	0	0	0	63		
14A-19	2	50	3	leftovers	0	100%	100%	100%			0	1	3	1	0	0	0	0	6		
16A-01	89	20	20	leftovers	0	71%	81%				13	0	0	0	6	0	0	0	16		
16A-18	433	400	399	leftovers	0	74%	52%	36%			210	18	123	8	0	0	0	0	357		
16A-19	9	300	155	leftovers	115	59%	59%	20%			4	21	181	17	0	0	0	0	227		
17A-01	549	150	141	leftovers	0	76%	47%				23	0	12	0	25	0	4	0	66		
17A-11	517	300	265	leftovers	0	79%	36%				85	2	8	2	0	2	0	0	95		
17A-13	19	100	92	leftovers	0	72%	29%				0	2	21	2	0	0	0	0	26		
18A-01	982	600	596	leftovers	0	76%	52%				260	3	43	5	0	0	0	0	311		
19A-01	389	200	195	leftovers	0	80%	49%				73	6	17	0	0	0	0	0	96		
22A-01	1,148	600	596	leftovers	0	75%	56%				279	0	56	0	0	0	0	0	335		
23A-01	807	400	396	leftovers	0	81%	54%				169	2	38	4	2	0	0	0	214		
25A-11	279	250	217	leftovers	0	78%	29%				43	0	17	0	2	0	2	0	64		
25A-13	6	75	59	leftovers	0	73%	28%				0	2	10	2	0	0	3	0	16		
26A-08	975	700	698	leftovers	0	71%	52%	32%			361	29	198	18	0	5	0	0	602		
26A-09	35	600	466	leftovers	127	61%	58%	33%			11	89	427	72	0	0	0	0	607		
28A-06	844	600	577	leftovers	0	72%	50%	50%	18%		289	49	340	49	0	0	0	0	725		
28A-07	27	800	565	leftovers	159	65%	54%	29%	14%		5	56	500	157	0	0	18	0	739		
29A-01	716	300	298	leftovers	0	81%	52%				108	10	25	12	0	0	0	0	155		
32A-01	807	600	598	leftovers	0	79%	47%				217	5	56	5	0	0	0	0	283		
33A-01	155	20	19	leftovers	0	100%	75%				9	0	0	0	6	0	0	0	14		
33A-18	770	450	422	leftovers	0	69%	66%	31%			246	14	131	4	0	0	0	0	409		
33A-19	22	400	284	leftovers	0	79%	62%	37%			2	27	240	26	0	0	0	0	281		
34A-01	414	300	277	leftovers	0	75%	37%				84	2	15	2	0	0	0	0	103		
36A-01	442	175	162	leftovers	0	79%	56%				59	0	4	0	27	0	2	0	90		
36A-11	212	250	229	leftovers	0	80%	45%				100	0	4	2	0	0	0	0	104		
36A-19	34	175	136	leftovers	0	74%	45%	27%			0	7	73	9	0	0	2	0	97		
37A-11	355	100	88	leftovers	0	89%	39%				27	1	6	0	0	0	0	0	34		
38A-01	100	20	20	leftovers	0	62%	38%				5	0	2	0	0	0	0	0	8		
38A-18	378	500	477	leftovers	0	69%	56%	24%			267	5	104	11	0	0	0	0	382		
38A-19	6	400	140	leftovers	44	63%	56%	29%			4	25	105	10	0	0	0	0	151		
40A-11	110	50	49	leftovers	0	70%	40%				15	2	0	2	0	0	0	0	19		
40A-13	4	50	32	leftovers	0	67%	30%				0	0	10	0	0	0	0	0	10		
40A-18	374	350	303	leftovers	0	73%	34%	26%			96	11	73	4	0	0	0	0	184		
40A-19	8	250	51	leftovers	0	74%	43%	17%			2	5	24	2	0	0	0	0	34		
42A-01	1,001	500	493	leftovers	0	73%	47%				211	3	24	0	0	0	0	0	233		
42A-03	68	200	198	leftovers	0	67%	40%				3	15	49	6	0	0	0	0	78		
43A-01	720	350	347	leftovers	0	75%	52%				129	2	47	0	0	0	0	0	181		
43A-03	42	100	97	leftovers	0	85%	46%				2	2	37	4	0	0	2	0	45		
44A-01	573	200	196	leftovers	0	75%	45%				63	3	20	2	0	0	0	0	87		
46A-01	791	350	343	leftovers	0	78%	49%				137	4	27	3	0	0	0	0	167		
46A-03	35	100	94	leftovers	0	60%	36%				0	0	26	3	0	0	0	0	34		
47A-08	849	500	497	leftovers	0	74%	61%	45%			275	31	202	14	7	0	0	0	525		
47A-09	30	500	394	leftovers	98	74%	66%	43%			11	39	409	85	0	7	4	0	559		
48A-01	829	500	492	leftovers	0	71%	55%				217	12	41	2	0	0	0	0	273		
51A-01	680	400	387	leftovers	0	79%	48%				163	6	14	6	0	0	0	0	186		
51A-03	29	450	358	leftovers	0	74%	20%				0	3	66	0	0	0	0	0	72		
51A-09	35	50	47	leftovers	0	67%	38%	25%			0	0	29	0	0	0	0	0	30		
52A-01	652	350	347	leftovers	0	85%	48%				150	5	13	2	0	0	0	0	165		
52A-03	16	100	97	leftovers	0	66%	52%				0	5	39	2	0	0	0	0	51		
54A-01	270	150	146	leftovers	0	76%	55%				45	0	8	0	24	0	0	0	81		
54A-18	591	500	496	leftovers	0	74%	59%	38%			284	10	194	4	0	0	0	0	501		
54A-19	17	400	289	leftovers	57	71%	53%	28%			0	10	251	63	0	0	13	7	331		

(Continued next page)

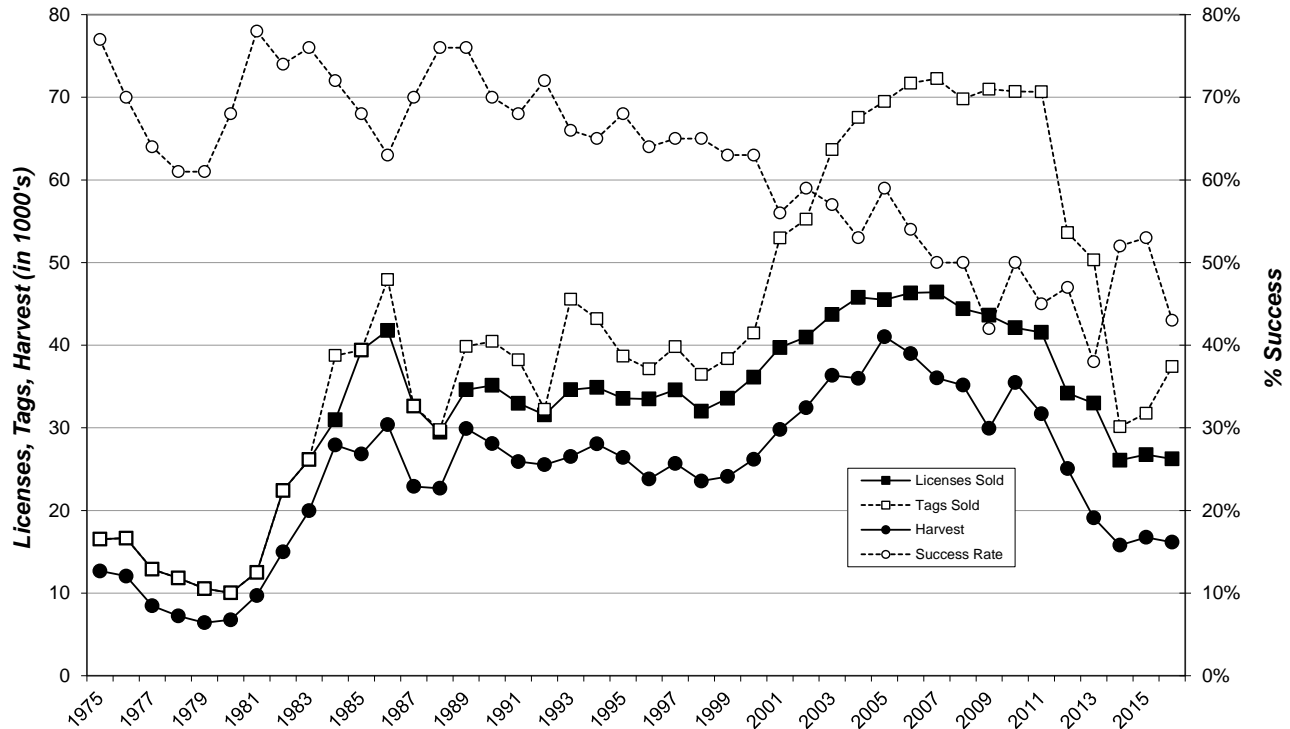
(continued from previous page)

Unit/Type	Licenses						Harvest Projections													
	Resident			Nonresident			Response			Success			Whitetail				Mule Deer			Total Deer
	Appl. 1st		Sold	Avail.		Sold	Rate	1st tag	2nd tag	3rd tag	Bucks		Does		Bucks		Does			
	Choice *	Avail.		Avail.	Sold						Adult	Fawn	Adult	Fawn	Adult	Fawn	Adult	Fawn		
55A-01	915	500	498	leftovers	0	85%	55%				207	10	53	4	0	0	0	0	274	
56A-11	475	400	369	leftovers	0	70%	34%				107	2	16	5	0	0	0	0	126	
56A-13	19	450	117	leftovers	0	68%	33%				0	11	23	3	0	0	0	0	39	
56A-19	19	50	44	leftovers	0	57%	25%	6%			0	2	10	0	0	0	0	0	14	
57A-01	1,154	900	882	leftovers	0	71%	58%				415	0	77	5	0	0	0	0	511	
57A-03	39	400	367	leftovers	20	73%	49%				8	26	163	8	0	0	0	0	191	
59A-01	495	150	138	leftovers	0	74%	61%				17	0	0	0	65	2	0	0	85	
59A-18	228	250	222	leftovers	0	69%	60%	20%			135	9	33	2	0	0	0	0	178	
59A-19	10	150	78	leftovers	0	67%	31%	13%			2	2	27	2	0	0	0	0	34	
59B-01	27	20	18	leftovers	0	86%	42%				8	0	0	0	0	0	0	0	7	
59B-18	268	350	308	leftovers	0	75%	49%	31%			145	12	84	8	0	0	0	0	247	
59B-19	13	100	23	leftovers	0	59%	30%	10%			0	0	9	0	0	0	0	0	9	
61A-01	484	100	95	leftovers	0	74%	40%				31	0	5	1	0	0	0	0	38	
62A-01	648	250	241	leftovers	0	82%	47%				89	4	19	0	0	0	0	0	113	
63A-01	209	50	52	leftovers	0	86%	44%				8	0	0	0	20	0	0	0	23	
63A-18	455	400	396	leftovers	0	72%	60%	36%			215	18	123	18	0	0	0	0	381	
63A-19	17	300	219	leftovers	77	77%	45%	22%			0	30	151	27	0	0	0	3	208	
Totals	33,948	29,080	25,479	leftovers	759	74.2%	1st tag	2nd tag			7,772	902	6,304	829	253	26	67	10	16,163	
							Type 08/18=	50%	31%											
							Type 09/19=	53%	28%											

* Number of 1st drawing applicants with that season as 1st choice.

East River Deer Regular Season 1975-2016

(does not include Special Buck or Landowner Own Land)



2016 East River LOL Harvest Projections

Last Revised: 28-Apr-17

Unit	Harvest Projections																Total Deer Harvest	Mean Satisfactn Rating	Average Days Hunted
	Licenses		Tags sold	Response Rate	Hunter Success	Tag Success	Whitetail				Mule Deer								
	Avail.	Sold					Bucks		Does		Bucks		Does						
ER1-01	Unitd	2,087	2,087	66%	32%	32%	564	6	53	8	25	0	3	0	658	4.23	4.37		
ER1-08	Unitd	2,933	5,866	66%	50%	34%	1,043	84	710	65	27	3	27	11	1,969	4.44	4.58		
Totals		5,020	7,953	66.0%	42%	33%	1,607	89	762	73	52	3	30	11	2,627	4.35	4.49		

2016 East River LOL Harvest Distribution by Management Unit

Last Revised: 01-May-17

Unit	Reported Harvest									Projected Harvest								Total Estimate	%	
	Whitetail				Mule Deer					Whitetail				Mule Deer						
	Bucks		Does		Bucks		Does			Bucks		Does		Bucks		Does				
	Adult	Fawn	Adult	Fawn	Adult	Fawn	Adult	Fawn	Adult	Fawn	Adult	Fawn	Adult	Fawn	Adult	Fawn				
01A (Minnehaha)	12	2	11	1	0	0	0	0	0	26	33	5	30	3	0	0	0	0	71	2.7%
03A (Brown)	24	0	9	3	0	0	0	0	0	36	65	0	24	8	0	0	0	0	98	3.7%
04A (Beadle)	37	2	10	2	0	0	1	0	0	52	101	5	27	5	0	0	3	0	142	5.4%
05A (Codington)	26	1	15	1	0	0	0	0	0	43	71	3	41	3	0	0	0	0	117	4.5%
06A (Brookings)	19	2	10	0	0	0	0	0	0	31	52	5	27	0	0	0	0	0	84	3.2%
07A (Yankton)	16	1	7	1	0	0	0	0	0	25	44	3	19	3	0	0	0	0	68	2.6%
08A (Davison)	5	0	2	0	0	0	0	0	0	7	14	0	5	0	0	0	0	0	19	0.7%
10A (Aurora)	8	0	5	1	0	0	0	0	0	14	22	0	14	3	0	0	0	0	38	1.5%
12A (Bon Homme)	4	0	4	0	0	0	1	0	0	9	11	0	11	0	0	0	3	0	24	0.9%
13A (Brule)	4	0	1	1	3	0	2	0	0	11	11	0	3	3	8	0	5	0	30	1.1%
14A (Buffalo)	4	0	0	0	0	0	0	0	0	4	11	0	0	0	0	0	0	0	11	0.4%
16A (Campbell)	8	0	3	0	2	0	2	0	0	15	22	0	8	0	5	0	5	0	41	1.6%
17A (Charles Mix)	17	0	9	0	3	0	1	0	0	30	46	0	24	0	8	0	3	0	82	3.1%
18A (Clark)	23	0	14	2	0	0	0	0	0	39	63	0	38	5	0	0	0	0	106	4.0%
19A (Clay)	7	1	3	0	0	0	0	0	0	11	19	3	8	0	0	0	0	0	30	1.1%
22A (Day)	18	2	9	0	0	0	0	0	0	29	49	5	24	0	0	0	0	0	79	3.0%
23A (Deuel)	12	1	4	0	0	0	0	0	0	17	33	3	11	0	0	0	0	0	46	1.8%
25A (Douglas)	1	0	0	0	0	0	0	0	0	1	3	0	0	0	0	0	0	0	3	0.1%
26A (Edmunds)	7	0	6	0	0	0	0	0	0	13	19	0	16	0	0	0	0	0	35	1.3%
28A (Faulk)	12	0	7	1	0	0	0	0	0	20	33	0	19	3	0	0	0	0	54	2.1%
29A (Grant)	23	0	13	0	0	0	0	1	0	37	63	0	35	0	0	0	0	3	101	3.8%
32A (Hamlin)	14	2	8	0	0	0	0	0	0	24	38	5	22	0	0	0	0	0	65	2.5%
33A (Hand)	36	1	7	0	1	0	0	1	0	46	98	3	19	0	3	0	0	3	125	4.8%
34A (Hanson)	9	1	9	0	0	0	0	0	0	19	25	3	24	0	0	0	0	0	52	2.0%
36A (Hughes)	10	0	4	0	5	0	3	0	0	22	27	0	11	0	14	0	8	0	60	2.3%
37A (Hutchinson)	18	2	5	0	1	0	0	0	0	26	49	5	14	0	3	0	0	0	71	2.7%
38A (Hyde)	7	3	2	0	1	0	0	0	0	13	19	8	5	0	3	0	0	0	35	1.3%
40A (Jerauld)	10	2	3	2	0	0	0	0	0	17	27	5	8	5	0	0	0	0	46	1.8%
42A (Kingsbury)	10	1	7	0	0	0	0	0	0	18	27	3	19	0	0	0	0	0	49	1.9%
43A (Lake)	10	0	2	1	0	0	0	0	0	13	27	0	5	3	0	0	0	0	35	1.3%
44A (Lincoln)	1	0	2	0	0	0	0	0	0	3	3	0	5	0	0	0	0	0	8	0.3%
46A (McCook)	16	0	2	1	0	0	0	0	0	19	44	0	5	3	0	0	0	0	52	2.0%
47A (McPherson)	7	1	9	3	0	0	0	0	0	20	19	3	24	8	0	0	0	0	54	2.1%
48A (Marshall)	8	0	5	0	0	0	0	0	0	13	22	0	14	0	0	0	0	0	35	1.3%
51A (Miner)	14	1	4	0	0	0	0	0	0	19	38	3	11	0	0	0	0	0	52	2.0%
52A (Moody)	5	0	8	2	0	0	0	0	0	15	14	0	22	5	0	0	0	0	41	1.6%
54A (Potter)	15	0	6	0	1	0	1	0	0	23	41	0	16	0	3	0	3	0	63	2.4%
55A (Roberts)	35	2	20	2	0	0	0	0	0	59	95	5	54	5	0	0	0	0	161	6.1%
56A (Sanborn)	9	0	3	0	0	0	0	0	0	12	25	0	8	0	0	0	0	0	33	1.2%
57A (Spink)	32	0	9	2	0	0	0	0	0	43	87	0	24	5	0	0	0	0	117	4.5%
59A (W Sully)	4	1	0	0	0	0	0	0	0	5	11	3	0	0	0	0	0	0	14	0.5%
59B (E Sully)	3	0	2	0	0	0	0	0	0	5	8	0	5	0	0	0	0	0	14	0.5%
61A (Turner)	12	0	10	0	0	0	0	0	0	22	33	0	27	0	0	0	0	0	60	2.3%
62A (Union)	10	2	6	1	0	0	0	0	0	19	27	5	16	3	0	0	0	0	52	2.0%
63A (Walworth)	7	2	6	0	2	1	0	2	0	20	19	5	16	0	5	3	0	5	54	2.1%
Unknown	0	0	0	0	0	0	0	0	0	0										
TOTALS		589	33	281	27	19	1	11	4	965	1,607	89	762	73	52	3	30	11	2,627	

Any by management unit projected harvest values will differ from statewide projected harvest values due to incorrect sampling proportions within units.

Use these figures for approximations only! All unknown harvest locations were assigned the license holder's county of residence, if possible.

2016 East River Special Buck Harvest Projections

Last Revised:
13-Mar-17

Unit/Type	Appl. 1st Choice *	Resident Licenses		Response Rate	Tag Success	Harvest Projections								Total Deer Harvest	Mean Satisfactn Rating	Average Days Hunted
		Whitetail				Mule Deer		Whitetail		Mule Deer						
		Bucks	Does			Bucks	Does	Bucks	Does	Bucks	Does					
ER-01	1,010	556	549	82%	58%	285	4	2	1	24	0	0	0	317	5.03	5.09

2016 East River Special Buck Harvest Distribution

Last Revised:
13-Mar-17

Unit	Reported Harvest								Total	Projected Harvest								Total	
	Whitetail				Mule Deer					Whitetail				Mule Deer				Estimate	%
	Bucks	Does	Bucks	Does	Bucks	Does	Bucks	Does		Bucks	Does	Bucks	Does	Bucks	Does				
01A (Minnehaha)	10	1	0	0	0	0	0	0	11	12	1	0	0	0	0	0	0	14	4.3%
03A (Brown)	18	0	0	0	0	0	0	0	18	22	0	0	0	0	0	0	0	22	7.1%
04A (Beadle)	5	0	0	0	0	0	0	0	5	6	0	0	0	0	0	0	0	6	2.0%
05A (Cody)	10	0	1	0	0	0	0	0	11	12	0	2	0	0	0	0	0	15	4.7%
06A (Brookings)	7	0	0	0	0	0	0	0	7	9	0	0	0	0	0	0	0	9	2.8%
07A (Yankton)	8	0	0	0	0	0	0	0	8	10	0	0	0	0	0	0	0	10	3.2%
08A (Davison)	0	0	0	0	0	0	0	0	0	0	0	0	0	0	0	0	0	0	0.0%
10A (Aurora)	0	0	0	0	0	0	0	0	0	0	0	0	0	0	0	0	0	0	0.0%
12A (Bon Homme)	4	0	0	0	0	0	0	0	4	5	0	0	0	0	0	0	0	5	1.6%
13A (Brule)	0	0	0	0	2	0	0	0	2	0	0	0	0	2	0	0	0	2	0.8%
14A (Buffalo)	0	0	0	0	0	0	0	0	0	0	0	0	0	0	0	0	0	0	0.0%
16A (Campbell)	3	0	0	0	0	0	0	0	3	4	0	0	0	0	0	0	0	4	1.2%
17A (Charles Mix)	4	0	0	0	6	0	0	0	10	5	0	0	0	7	0	0	0	12	3.9%
18A (Clark)	7	0	0	0	0	0	0	0	7	9	0	0	0	0	0	0	0	9	2.8%
19A (Clay)	4	0	0	0	0	0	0	0	4	5	0	0	0	0	0	0	0	5	1.6%
22A (Day)	12	0	0	0	0	0	0	0	12	15	0	0	0	0	0	0	0	15	4.7%
23A (Deuel)	0	0	0	0	0	0	0	0	0	0	0	0	0	0	0	0	0	0	0.0%
25A (Douglas)	0	0	0	0	0	0	0	0	0	0	0	0	0	0	0	0	0	0	0.0%
26A (Edmunds)	5	0	0	0	0	0	0	0	5	6	0	0	0	0	0	0	0	6	2.0%
28A (Faulk)	9	0	0	0	0	0	0	0	9	11	0	0	0	0	0	0	0	11	3.6%
29A (Grant)	8	0	0	0	0	0	0	0	8	10	0	0	0	0	0	0	0	10	3.2%
32A (Hamlin)	5	0	0	0	0	0	0	0	5	6	0	0	0	0	0	0	0	6	2.0%
33A (Hand)	9	0	0	0	2	0	0	0	11	11	0	0	0	2	0	0	0	14	4.3%
34A (Hanson)	0	0	0	0	0	0	0	0	0	0	0	0	0	0	0	0	0	0	0.0%
36A (Hughes)	6	0	0	0	2	0	0	0	8	7	0	0	0	2	0	0	0	10	3.1%
37A (Hutchinson)	3	0	0	0	0	0	0	0	3	4	0	0	0	0	0	0	0	4	1.2%
38A (Hyde)	3	0	0	0	0	0	0	0	3	4	0	0	0	0	0	0	0	4	1.2%
40A (Jerauld)	6	0	0	0	0	0	0	0	6	7	0	0	0	0	0	0	0	7	2.4%
42A (Kingsbury)	8	0	0	0	0	0	0	0	8	10	0	0	0	0	0	0	0	10	3.2%
43A (Lake)	6	0	0	0	0	0	0	0	6	7	0	0	0	0	0	0	0	7	2.4%
44A (Lincoln)	6	0	0	0	0	0	0	0	6	7	0	0	0	0	0	0	0	7	2.4%
46A (McCook)	2	0	0	1	0	0	0	0	3	2	0	0	1	0	0	0	0	4	1.2%
47A (McPherson)	6	0	0	0	0	0	0	0	6	7	0	0	0	0	0	0	0	7	2.4%
48A (Marshall)	5	0	0	0	0	0	0	0	5	6	0	0	0	0	0	0	0	6	2.0%
51A (Miner)	3	0	0	0	0	0	0	0	3	4	0	0	0	0	0	0	0	4	1.2%
52A (Moody)	1	0	0	0	0	0	0	0	1	1	0	0	0	0	0	0	0	1	0.4%
54A (Potter)	7	0	0	0	2	0	0	0	9	9	0	0	0	2	0	0	0	11	3.5%
55A (Roberts)	3	1	0	0	0	0	0	0	4	4	1	0	0	0	0	0	0	5	1.6%
56A (Sanborn)	1	0	0	0	0	0	0	0	1	1	0	0	0	0	0	0	0	1	0.4%
57A (Spink)	9	0	0	0	0	0	0	0	9	11	0	0	0	0	0	0	0	11	3.6%
59A (W Sully)	8	0	0	0	5	0	0	0	13	10	0	0	0	6	0	0	0	16	5.1%
59B (E Sully)	3	0	0	0	0	0	0	0	3	4	0	0	0	0	0	0	0	4	1.2%
61A (Turner)	3	0	0	0	0	0	0	0	3	4	0	0	0	0	0	0	0	4	1.2%
62A (Union)	8	1	0	0	0	0	0	0	9	10	1	0	0	0	0	0	0	11	3.5%
63A (Walworth)	3	0	0	0	1	0	0	0	4	4	0	0	0	1	0	0	0	5	1.6%
Unknown	5	0	1	0	0	0	0	0	6										
TOTALS	233	3	2	1	20	0	0	0	259	285	4	2	1	24	0	0	0	317	

Any by management unit projected harvest values will differ from statewide projected harvest values due to incorrect sampling proportions within units.
Use these figures for approximations only!