

WEST RIVER FIREARM DEER

There were 24,142 licenses issued for the 2020 West River Firearm Deer season (19,382 regular, 1,955 Special Buck, and 2,805 Landowner Own Land Only) for a total of 32,347 tags.

The West River season was open 16 days from November 14-29 in most units. Unit 30A in Gregory County was open from Nov. 7-10 and Nov. 23-29. The season was also open from December 12-20 for all unfilled antlerless deer tags.

All hunters were surveyed for the regular West River season, the West River Special Buck season, and Landowner Own Land Only licenses. All hunters that listed an email address were surveyed using Survey123 Software. All hunters who did not respond or did not supply an email address were mailed post card requests to respond through the GFP website. Final response rates were 56% for regular West River Deer, 41% for Landowner Own Land, and 68% for Special Buck.

Respondents reported hunting an average of 3.34 days in the regular West River season, 4.14 days for Landowner, and 3.69 days in the Special Buck. These averages project to a total of 81,396 recreation days for all West River firearm deer seasons.

The West River projected deer harvest was 14,602 for the regular season, 2,203 for Landowner Own Land, and 1,450 for the Special Buck licenses. Success rates were 56% for the regular season, 49% for landowner, and 74% for Special Buck.

The mean satisfaction score for those responding to the regular West River season was 5.30 (1 being very dissatisfied and 7 very satisfied).

Summary comparison of the 2011-2020 West River Deer seasons (including Special Buck and Landowner)

YEAR	Licenses Sold				Harvest				Total	Tag Success	Avg Days	Avg Satis
	Resident		Nonres		Bucks		Does					
	Lics	Tags	Lics	Tags	WT	Mule	WT	Mule				
2011	25,917	57,091	3,978	8,645	11,139	4,456	12,301	3,901	31,797	48%	3.64	5.00
2012	22,511	44,080	3,143	6,173	8,606	3,650	8,946	2,391	23,594	47%	3.63	4.96
2013	22,422	44,118	3,216	6,257	7,749	3,358	5,785	1,678	18,570	37%	3.56	4.46
2014	20,736	23,533	2,035	2,216	7,646	3,246	2,415	334	13,642	53%	3.25	4.88
2015	20,417	23,405	2,394	2,547	9,091	3,673	2,521	246	15,528	60%	3.12	5.27
2016	21,974	28,565	2,510	3,086	8,789	3,885	3,805	354	16,384	53%	3.33	5.13
2017	21,310	26,057	2,322	2,679	7,977	4,384	3,224	399	15,984	56%	3.28	5.05
2018	21,389	26,184	2,337	2,691	7,731	4,200	3,270	427	15,628	54%	3.38	5.10
2019	20,864	28,342	2,028	2,592	7,717	3,800	3,732	423	15,672	51%	3.09	5.18
2020	21,733	29,434	2,380	2,872	9,147	4,033	4,621	454	18,255	56%	3.46	5.30

2020 West River Deer Antlerless Harvest by Date

	Total	Nov 7-29	Dec 12-20
Reports	2,722	2,386	336
Percent of total		88%	12%
Projected	4,728	4,145	584

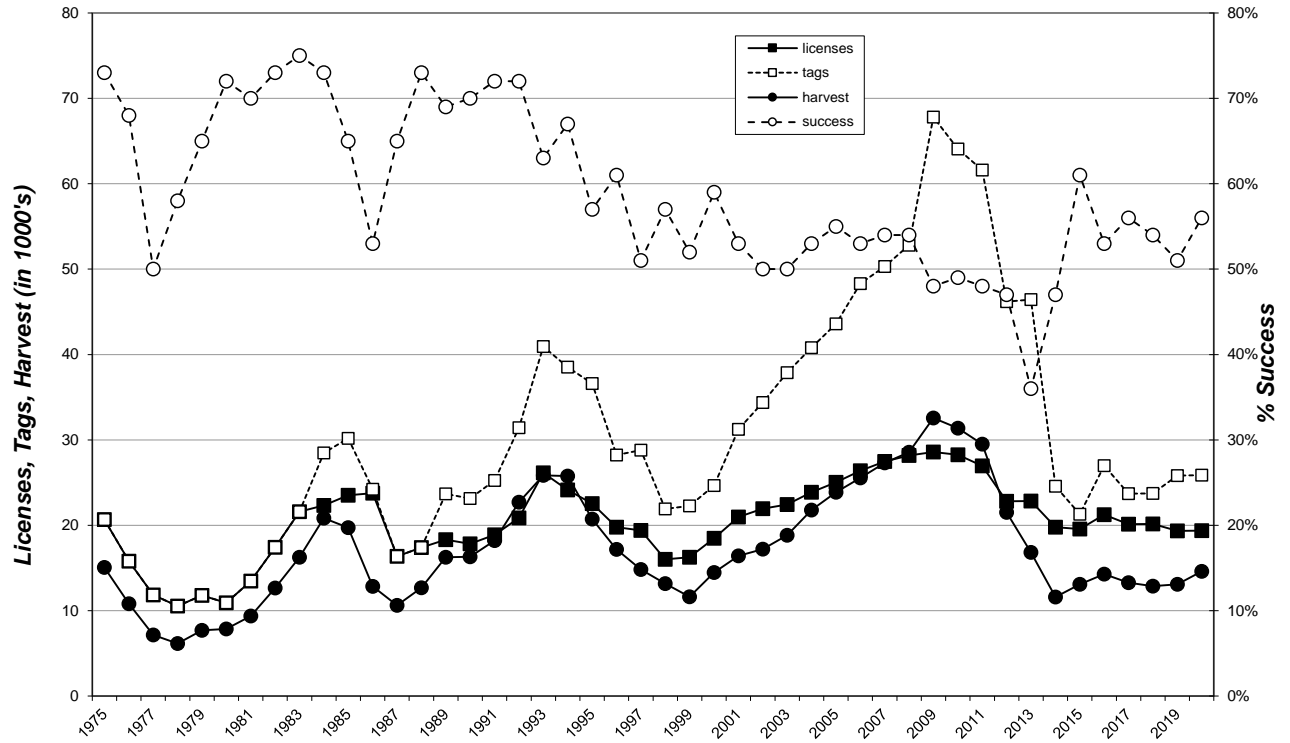
2020 West River Deer Harvest Projections

Last Revised: 30-Mar-21

Unit/Type	Licenses											Harvest Projections										Total Deer		Harvest	CI (95%)
	Resident			Nonresident			Tags sold	Response Rate	Success			Hunter Success	Whitetail				Mule Deer								
	Appl. 1st Choice *	Avail.	Sold	Appl. 1st Choice *	Avail.	Sold			1st tag	2nd tag	3rd tag		Bucks Adult	Fawn Adult	Does Adult	Fawn Adult	Bucks Adult	Fawn Adult	Does Adult	Fawn Adult					
02A-01	587	400	401	133	32	30	431	62%	68%					68%	63	0	5	0	217	0	6	2	294	+/-17	
02A-18	41	200	203	8	16	16	438	51%	62%	27%				62%	110	6	75	4	0	0	0	0	195	+/-31	
02C-01	336	100	102	78	8	8	110	68%	73%					73%	18	0	0	0	62	0	1	0	81	+/-7	
02C-11	20	50	51	6	4	3	54	53%	63%					64%	34	0	2	0	0	0	0	0	36	+/-7	
11A-01	172	150	151	21	12	10	161	61%	68%					68%	60	0	8	0	37	0	3	0	109	+/-10	
11A-11	4	50	49	3	4	5	54	56%	70%					70%	38	0	0	0	0	0	0	0	38	+/-6	
11A-13	1	50	50	0	4	4	54	47%	33%					33%	0	0	15	2	0	0	0	0	17	+/-8	
11B-01	148	100	100	18	8	8	108	59%	64%					64%	44	0	3	0	22	0	0	0	69	+/-9	
11B-11	25	50	50	6	4	4	54	53%	64%					64%	32	0	2	0	0	0	0	0	34	+/-7	
11B-13	4	50	46	1	4	7	53	70%	45%					54%	0	3	27	3	0	0	0	0	33	+/-6	
15A-01	768	225	229	136	18	18	247	60%	75%					75%	37	0	5	3	138	0	3	0	186	+/-12	
15A-18	517	650	652	74	52	49	1,402	54%	73%	43%				73%	422	24	313	63	0	0	0	0	822	+/-54	
15B-01	253	150	149	32	12	13	162	46%	68%					69%	69	2	6	0	35	0	0	0	112	+/-14	
15B-17	50	150	156	8	12	7	489	51%	66%	55%	35%			66%	0	33	191	29	0	0	0	0	254	+/-43	
15B-18	396	500	503	47	40	35	1,076	52%	81%	44%				81%	384	33	242	13	0	0	0	0	671	+/-47	
15P-17	30	250	246	17	20	24	810	48%	69%	57%	39%			68%	0	56	351	37	0	0	0	0	444	+/-60	
20A-01	420	150	149	89	12	11	160	61%	75%					75%	38	0	3	0	79	0	2	0	121	+/-9	
20A-11	151	300	303	60	24	23	326	54%	63%					63%	184	0	20	0	0	0	0	0	204	+/-17	
21A-01	564	125	131	71	10	8	139	59%	68%					68%	30	0	2	0	62	0	2	0	96	+/-10	
21A-11	227	200	202	20	16	14	216	59%	79%					79%	160	2	8	0	0	0	0	0	170	+/-12	
21B-01	150	100	101	19	8	7	108	59%	63%					63%	46	2	2	0	14	0	5	0	68	+/-9	
21B-11	36	50	50	4	4	4	54	70%	64%					65%	36	0	0	0	0	0	0	0	36	+/-6	
21B-13	6	50	50	2	4	3	53	51%	40%					38%	0	0	20	0	0	0	0	0	20	+/-7	
24A-01	285	100	100	35	8	8	108	65%	65%					66%	17	0	0	0	54	0	2	0	72	+/-8	
24A-11	89	250	246	43	20	18	264	52%	61%					61%	137	0	25	0	0	0	0	0	162	+/-17	
24A-13	0	100	92	6	8	12	104	56%	56%					53%	0	9	37	2	0	0	0	0	48	+/-11	
24B-11	62	10	10	9	1	1	11	55%	100%					100%	11	0	0	0	0	0	0	0	11	+/-0	
24B-13	2	10	10	0	1	1	11	40%	75%					75%	0	0	8	0	0	0	0	0	8	+/-4	
27A-01	355	125	127	55	10	9	136	59%	68%					68%	40	0	0	2	49	0	3	0	94	+/-10	
27B-01	545	200	201	89	16	16	217	63%	65%					65%	41	0	5	0	89	0	6	0	141	+/-13	
27B-11	87	200	202	21	16	14	216	56%	66%					66%	122	2	18	0	0	0	0	0	142	+/-13	
27B-13	5	100	100	0	8	8	108	55%	49%					49%	0	2	49	2	0	0	0	0	53	+/-10	
27L-01	41	5	5	15	1	1	6	67%	50%					50%	2	0	2	0	0	0	0	0	3	+/-3	
27L-11	20	10	10	10	1	1	11	82%	56%					56%	5	1	0	0	0	0	0	0	6	+/-2	
27P-13	0	50	48	0	4	5	53	60%	45%					52%	0	2	27	2	0	0	0	0	30	+/-7	
30A-01	193	25	27	14	2	1	28	57%	63%					63%	16	0	0	0	2	0	0	0	18	+/-5	
30A-11	518	500	501	67	40	40	541	56%	38%					38%	171	5	25	4	0	0	0	0	205	+/-23	
30A-18	135	100	100	8	8	8	216	57%	62%	33%				61%	51	2	40	7	0	0	0	0	100	+/-19	
30B-01	123	25	28	17	2	2	30	50%	40%					40%	12	0	0	0	0	0	0	0	12	+/-6	
30B-11	474	500	502	89	40	39	541	56%	48%					48%	206	7	43	2	0	0	0	0	258	+/-23	
30B-18	171	100	101	14	8	8	218	54%	78%	50%				78%	52	13	69	4	0	0	0	0	138	+/-20	
31A-01	877	600	608	102	48	46	654	60%	69%					69%	134	0	5	2	295	0	17	0	452	+/-21	
31A-11	10	100	99	8	8	8	107	68%	53%					53%	53	1	1	1	0	0	0	0	57	+/-8	
31A-13	1	100	101	3	8	7	108	66%	40%					41%	0	6	36	3	0	0	0	0	45	+/-8	
35A-01	705	300	298	193	24	26	324	58%	68%					69%	51	0	5	0	156	2	12	0	226	+/-15	
35A-18	64	300	301	31	24	24	650	58%	65%	39%				65%	150	29	136	26	0	0	0	0	341	+/-36	
35A-19	5	100	99	3	8	8	214	53%	55%	25%				55%	0	9	64	17	0	0	0	0	91	+/-22	
35C-01	434	150	147	96	12	15	162	61%	79%					79%	15	0	0	0	109	0	3	0	127	+/-9	
35C-18	96	300	299	35	24	24	646	55%	64%	26%				64%	173	16	77	24	0	0	0	0	290	+/-36	
35C-19	1	100	100	2	8	8	216	58%	39%	23%				40%	0	7	45	21	0	0	0	0	73	+/-19	
35L-01	720	100	105	223	8	8	113	70%	78%					78%	10	0	0	0	74	1	3	0	89	+/-7	
39A-01	347	150	150	43	12	11	161	61%	75%					75%	23	0	2	0	94	0	2	0	120	+/-11	
39A-11	41	100	101	7	8	8	109	65%	59%					59%	60	2	3	0	0	0	0	0	64	+/-9	
39B-01	265	275	277	43	22	19	296	60%	69%					69%	93	0	3	0	101	0	7	0	205	+/-15	
39B-11	4	50	51	2	4	4	55	50%	76%					73%	36	2	0	0	0	0	0	0	38	+/-8	
39B-13	0	50	44	1	4	10	54	52%	47%					52%	0	2	27	2	0	0	0	0	31	+/-10	
41A-01	309	150	151	47	12	11	162	57%	69%					69%	49	0	5	2	52	2	3	0	114	+/-13	
41A-11	10	300	301	32	24	22	323	55%	63%					64%	179	5	18	0	0	0	0	0	203	+/-17	
45A-01	327	100	101	38	8	8	109	59%	53%					53%	27	0	0	0	31	0	0	0	58	+/-10	
45A-11	79	450	446	35	36	36	482	56%	49%					49%	202	5	30	2	0	0	0	0	239	+/-21	
45A-18	74	100	100	7	8	6	212	55%	81%	45%				81%	64	4	64	2	0	0	0	0	133	+/-19	
45B-01	159	50	51	29	4	4	55	58%	56%					56%	22	0	0	2	7	0	0	0	31	+/-7	
45B-18	216	100	101	16	8	7	216	68%	68%	37%				68%	69	3	37	4	0	0	0	0	113	+/-17	
45C-01	46	30	30	4	3	3	33	58%	47%					47%	3	2	2	0	9	0	0	0	16	+/-6	
45C-19	1	20	22	0	2	4	44	48%	67%	44%				70%	0	4	19	6	0	0	0	0	29	+/-9	
45D-01	211	20	26	38	2	2	28	75%	71%					71%	5	0	0	0	13	0	1	0	20	+/-3	
45D-11	127	40	37	13	4	4	41	68%	75%					75%	31	0	0	0	0	0	0	0	31	+/-4	
45P-13	1	50	46	0	4	7	53	49%	50%					57%	0	2	31	2	0	0	0	0	35	+/-10	
49A-01	545	700	701	64	56	56	757	51%	62%					62%	278	0	25	0	157	2	14	0	476	+/-28	
49A-18	115	300	300	25	24	25	650	48%	69%	39%				70%	196	8	144	8	0	0	0	0	357	+/-41	
49A-19	20	150	152	4	12	10	324</																		

West River Deer Regular Season 1975-2020

(does not include Special Buck or Landowner Own Land)



2020 West River Landowner Own Land Harvest Projections

Last Revised:

09-Apr-21

Harvest Projections

Unit/Type	Resident Licenses		Tags sold	Nonresident Licenses		Response Rate	Hunter Success	Tag Success	Whitetail				Mule Deer				Total Deer Harvest	Mean Satisfactn Rating	Average Days Hunted
	Avail.	Sold		Avail.	Sold				Bucks		Does		Bucks		Does				
	Adult	Fawn	Adult	Fawn	Adult	Fawn	Adult	Fawn											
WR1-01	Unltd	1,089	1,106	Unltd	17	44%	51%	51%	297	2	34	0	219	0	5	2	560	-	-
WR1-08	Unltd	1,687	3,398	Unltd	12	38%	67%	48%	596	21	490	21	294	13	191	16	1,643	-	-
Totals		2,776	4,504		29	40.5%	60%	49%	893	23	525	21	514	13	195	18	2,203	5.29	4.14

2020 West River LOL Harvest Distribution by Management Unit

Last Revised:

05-May-21

Projected Harvest

Unit	Projected Harvest								Total	
	Whitetail				Mule Deer					
	Bucks		Does		Bucks		Does		Estimate	%
Adult	Fawn	Adult	Fawn	Adult	Fawn	Adult	Fawn			
02A (NE Penn/SE Meade)	22	3	20	0	19	0	9	0	73	3.3%
02C (SE Pennington)	11	0	9	0	13	0	6	0	39	1.8%
11A (N Bennett)	25	0	0	3	3	0	6	0	37	1.7%
11B (S Bennett)	14	0	6	0	5	0	0	0	25	1.1%
15A (Butte)	55	3	51	0	29	0	12	0	151	6.8%
15B (SW Butte/Lawrence)	36	3	51	3	8	0	3	0	104	4.7%
20A (Corson)	11	0	11	0	24	0	15	3	64	2.9%
21A (E Custer/S Penn)	14	0	9	0	8	3	0	0	33	1.5%
21B (C Custer/C Penn)	14	0	6	0	0	0	0	0	20	0.9%
24A (Dewey)	28	0	9	0	19	5	18	0	78	3.5%
27A (NW FRiver/SW Cust)	11	6	6	0	11	0	3	0	36	1.6%
27B (Fall River)	19	0	23	0	19	0	6	0	67	3.0%
30A,B (Gregory)	105	3	100	3	3	0	3	0	217	9.8%
31A (Haakon)	64	0	23	3	64	0	30	3	186	8.5%
35A (W Harding)	6	0	11	0	27	0	6	0	50	2.2%
35C (E Harding)	3	0	11	0	5	0	3	0	22	1.0%
39A (N Jackson)	8	0	3	0	19	0	0	0	30	1.4%
39B (S Jackson)	22	0	6	0	8	0	6	3	45	2.0%
41A (Jones)	25	0	11	0	32	0	9	0	77	3.5%
45A (W Lyman)	36	0	29	0	11	3	12	0	90	4.1%
45B (E Lyman)	19	0	11	0	5	0	0	0	36	1.6%
45C (NE Lyman/SE Stanley)	6	0	0	0	0	0	3	0	9	0.4%
45D (Ft Pr Nat Grslnd)	14	0	0	3	8	0	0	0	25	1.1%
49A (W Meade)	41	0	11	0	24	0	9	9	95	4.3%
49B (NE Meade)	25	0	11	0	27	0	3	0	66	3.0%
50A,B (Mellette)	30	0	11	0	13	0	0	0	55	2.5%
53A (N Perkins)	19	0	9	0	37	0	0	0	65	3.0%
53C (S Perkins)	33	3	14	0	16	0	6	0	72	3.3%
58A (Stanley)	30	0	6	0	29	0	12	0	77	3.5%
60A (Tripp)	108	3	43	6	8	3	9	0	179	8.1%
64A (Ziebach)	14	0	3	0	13	0	6	0	36	1.6%
65A (Oglala Lakota)	0	0	0	0	0	0	0	0	0	0.0%
67A (Todd)	25	0	11	0	8	0	0	0	44	2.0%
TOTALS	893	23	525	21	514	13	195	18	2,203	

Any by management unit projected harvest values will differ from statewide projected harvest values due to incorrect sampling proportions within units.

Use these figures for approximations only! All unknown harvest locations were assigned the license holder's county of residence, if possible.

2020 West River Special Buck Harvest Projections

Unit/Type	Licenses						Harvest Projections								Total Deer Harvest	Mean Satisfactn Rating	Average Days Hunted			
	Resident			Nonresident			Tags sold	Response Rate	Tag Success	Whitetail				Mule Deer						
	Appl. 1st Choice *	Avail.	Sold	Appl. 1st Choice *	Avail.	Sold				Bucks		Does		Bucks				Does		
										Adult	Fawn	Adult	Fawn	Adult				Fawn	Adult	Fawn
WR-01	1038	500	499	947	500	480	979	71%	80%	304	0	4	3	463	1	4	0	780	-	-
WR-11	56	500	498	168	500	478	976	64%	69%	661	0	9	0	0	0	0	0	670	-	-
Totals	1,094	1,000	997	1,115	1,000	958	1,955	68%	74%	964	0	14	3	463	1	4	0	1,450	5.81	3.69

2020 West River Special Buck Harvest Distribution

Unit	Projected Harvest										Estimate	%
	Whitetail				Mule Deer				Total			
	Bucks		Does		Bucks		Does		Estimate	%		
	Adult	Fawn	Adult	Fawn	Adult	Fawn	Adult	Fawn				
02A (NE Penn/SE Meade)	28	0	0	0	45	0	0	0	73	5.0%		
02C (SE Pennington)	21	0	0	0	17	0	1	0	40	2.7%		
11A (N Bennett)	3	0	0	0	6	0	0	0	9	0.7%		
11B (S Bennett)	16	0	0	0	2	0	0	0	18	1.2%		
15A (Butte)	37	0	0	0	25	0	0	0	62	4.3%		
15B (SW Butte/Lawrence)	31	0	0	0	6	0	0	0	37	2.6%		
20A (Corson)	34	0	2	0	23	0	0	0	59	4.1%		
21A (E Custer/S Penn)	31	0	0	0	16	0	0	0	46	3.2%		
21B (C Custer/C Penn)	10	0	0	0	3	0	0	0	13	0.9%		
24A (Dewey)	11	0	0	1	6	0	0	0	19	1.3%		
27A (NW FRiver/SW Cust)	6	0	0	0	5	0	0	0	11	0.8%		
27B (Fall River)	28	0	0	0	12	0	0	0	40	2.8%		
27L (Hill Ranch)	5	0	0	0	0	0	0	0	5	0.3%		
30A,B (Gregory)	180	0	2	0	5	0	0	0	186	12.8%		
31A (Haakon)	36	0	2	0	36	0	0	0	73	5.0%		
35A (W Harding)	16	0	2	0	45	0	0	0	63	4.4%		
35C (E Harding)	15	0	0	0	25	0	1	0	41	2.8%		
39A (N Jackson)	21	0	0	0	8	0	0	0	29	2.0%		
39B (S Jackson)	21	0	0	0	9	0	0	0	30	2.1%		
41A (Jones)	52	0	0	1	23	0	0	0	77	5.3%		
45A (W Lyman)	36	0	2	0	12	0	0	0	50	3.4%		
45B (E Lyman)	11	0	0	0	2	0	0	0	13	0.9%		
45C (NE Lyman/SE Stanley)	18	0	0	0	0	0	0	0	18	1.2%		
45D (Ft Pr Nat Grslnd)	2	0	0	0	0	0	1	0	3	0.2%		
49A (W Meade)	28	0	0	0	3	0	0	0	31	2.1%		
49B (NE Meade)	28	0	0	0	11	0	0	0	38	2.7%		
50A,B (Mellette)	42	0	0	0	17	0	0	0	59	4.1%		
53A (N Perkins)	23	0	0	0	8	0	0	0	30	2.1%		
53C (S Perkins)	36	0	2	0	20	1	0	0	59	4.1%		
58A (Stanley)	45	0	0	0	45	0	0	0	91	6.2%		
60A (Tripp)	76	0	3	0	9	0	0	0	89	6.1%		
64A (Ziebach)	19	0	0	0	14	0	0	0	33	2.3%		
65A (Oglala Lakota)	0	0	0	0	0	0	0	0	0	0.0%		
67A (Todd)	2	0	0	0	0	0	0	0	2	0.1%		
BH1 (Black Hills)	0	0	0	0	3	0	0	0	3	0.2%		
TOTALS	964	0	14	3	463	1	4	0	1,450			

Any by management unit projected harvest values will differ from statewide projected harvest values due to incorrect sampling proportions within units.
Use these figures for approximations only!