

# **Statewide Combined Deer Harvest**

There were 50,594 resident deer licenses (plus unlimited licenses) available in 2018 and 97,780 were issued. Nonresidents had 2,361 licenses (plus unlimited licenses) available and 8,513 were issued. Statewide, there were a total of 106,293 licenses sold that represented a total of 120,002 tags, an increase in 2,905 licenses and 2,972 tags from 2017. A total of 69,255 individual hunters were issued deer licenses in 2018, up from 68,101 in 2017.

Random samplings were taken for each unit within each season unless the numbers of hunters were low enough that all were sampled to satisfy the statistical analyses. Response rates ranged from 65% for Landowner Antlerless Deer to 84% for Custer State Park.

The projected statewide deer harvest was 51,926, nearly identical to 2017. This estimate included 27,211 whitetail bucks, 17,257 whitetail does, 5,947 mule bucks and 1,511 mule does. A slight increase in the number of licenses issued resulted in a 1% decrease in harvest success from 2017.

A decrease in white-tailed buck harvest along with increases in white-tailed doe, and mule buck and doe harvest accounted for the similar overall harvest from 2017. Both mule buck and doe harvest estimates increased slightly from 2017. Mule deer made up approximately 14% of the total harvest.

The 2018 overall statewide harvest success decreased to 43% from 44% in 2017. Harvest success ranged from 26% for Archery to 79% for West River Special Buck.

Respondents reported hunting an average of 5.17 days per hunter, which projects to a statewide total of 549,670 recreation days in 2017.

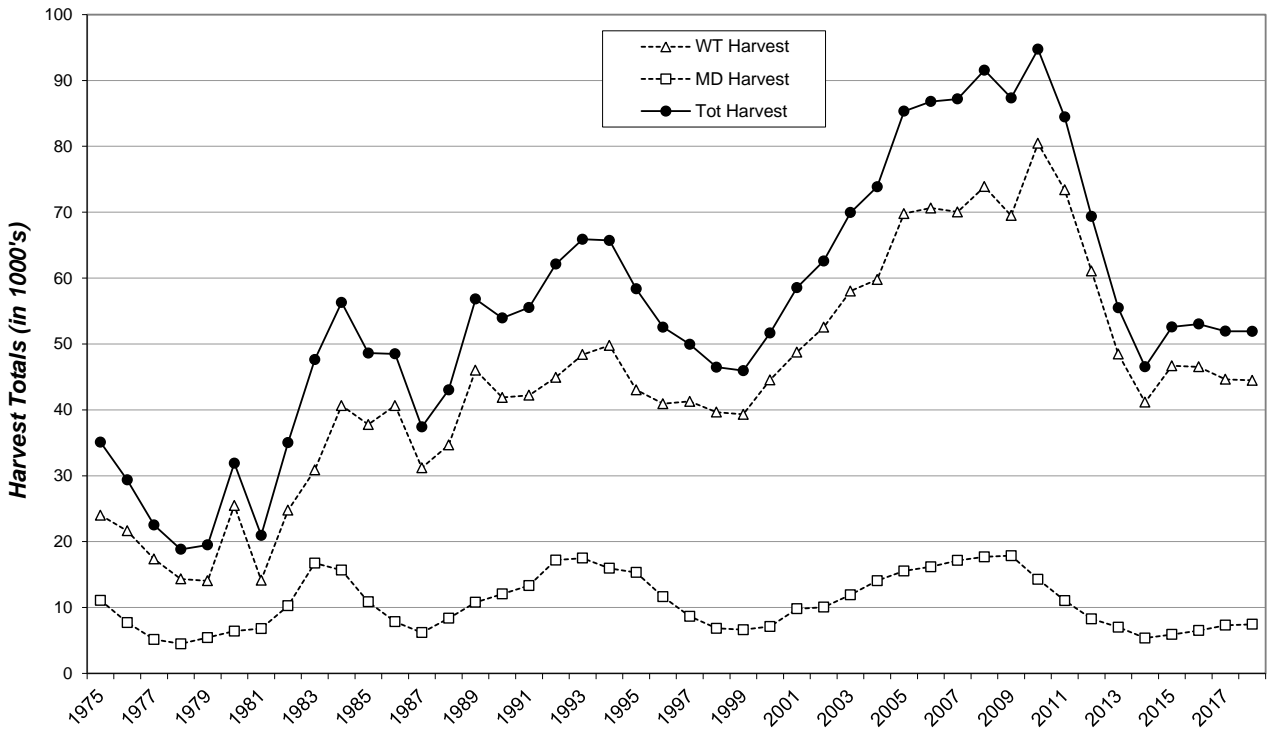
Average hunter satisfaction values (1=very dissatisfied to 7=very satisfied) varied between seasons and ranged from 4.46 for Waubay Refuge to 5.95 for West River Special Buck.

# 2018 Statewide Deer Harvest Projection Summary

last revised: 8 May 2019

SOUTH DAKOTA Harvest Statistic	Season	Archery	Apprentice Antlerless	Mentored Youth	Muzzleloader	Landowner Own Land Antlerless	West River	West River Landowner Own Land	West River Special Buck Unit	East River	East River Landowner Own Land	East River Special Buck Unit	Refuges			Black Hills	Custer State Park	Grand Totals
		Sand Lake NWR	Waubay NWR	Lacreek NWR														
<b>Licenses/Tags</b>																		
<b>Resident Licenses</b>																		
Available		Unlimited	Unlimited	Unlimited	Unlimited	Unlimited	18,660	Unlimited	500	26,375	Unlimited	500	150	20	25	4,300	64	50,594
Sold		26,660	4,318	5,357	3,263	377	18,319	2,570	500	25,365	5,926	500	149	20	26	4,366	64	97,780
<b>Resident Tags</b>																		
Available		Unlimited	Unlimited	Unlimited	Unlimited	Unlimited	21,980	Unlimited	500	31,625	Unlimited	500	150	20	25	4,300	64	59,164
Sold		26,660	4,318	5,357	3,263	377	21,534	4,150	500	29,828	9,598	500	149	20	26	4,366	64	110,710
<b>Nonresident Licenses</b>																		
Available		Unlimited	Unlimited	N/A	Unlimited	N/A	1,497	N/A	500	Leftovers	N/A	N/A	15	2	3	344	N/A	2,361
Sold		4,449	527	N/A	120	N/A	1,844	N/A	493	718	N/A	N/A	15	2	3	342	N/A	8,513
<b>Nonresident Tags</b>																		
Available		Unlimited	Unlimited	N/A	Unlimited	N/A	1,763	N/A	500	Leftovers	N/A	N/A	15	2	3	344	N/A	2,627
Sold		4,449	527	N/A	120	N/A	2,198	N/A	493	1,143	N/A	N/A	15	2	3	342	N/A	9,292
<b>Total Licenses</b>																		
Available		Unlimited	Unlimited	Unlimited	Unlimited	Unlimited	20,157	Unlimited	1,000	26,375	Unlimited	500	165	22	28	4,644	64	52,955
Sold		31,109	4,845	5,357	3,383	377	20,163	2,570	993	26,083	5,926	500	164	22	29	4,708	64	106,293
<b>Total Tags</b>																		
Available		Unlimited	Unlimited	Unlimited	Unlimited	Unlimited	23,743	Unlimited	1,000	31,625	Unlimited	500	165	22	28	4,644	64	61,791
Sold		31,109	4,845	5,357	3,383	377	23,732	4,150	993	30,971	9,598	500	164	22	29	4,708	64	120,002
<b>Hunters</b>																		
Available		Unlimited	Unlimited	Unlimited	Unlimited	Unlimited	23,743	Unlimited	1,000	31,625	Unlimited	500	165	22	28	4,644	64	61,791
Sold		24,291	4,845	5,357	3,307	309	19,149	2,570	993	25,078	5,926	500	164	22	29	4,708	64	69,255
<b>Recreation</b>																		
Average Days Hunted		10.59	3.85	3.61	4.44	2.99	3.30	3.91	3.47	4.18	4.34	5.33	2.66	2.94	2.00	4.54	2.56	5.17
Total Days Hunted		257,132	18,671	19,347	14,688	3,531	63,282	10,061	3,448	109,022	25,733	2,665	436	65	58	21,367	164	549,670
Mean Satisfaction Score		5.23	5.72	5.89	5.01	5.27	5.10	5.23	5.95	4.86	4.98	5.34	4.90	4.46	4.60	5.52	5.10	
<b>Harvest</b>																		
<b>White-tailed Deer</b>																		
Bucks		4,930	264	324	275	14	6,619	788	325	8,925	2,165	240	46	7	5	2,260	26	27,211
Does		1,902	1,823	2,011	808	153	2,845	425	0	5,399	1,206	11	16	6	0	643	10	17,257
Total		6,832	2,087	2,335	1,083	167	9,464	1,213	325	14,323	3,371	251	62	12	5	2,904	36	44,468
<b>Mule Deer</b>																		
Bucks		1,115	35	51	110	2	3,174	566	460	231	88	28	0	0	2	86	0	5,947
Does		141	377	439	14	5	234	190	4	58	36	1	0	0	0	13	0	1,511
Total		1,256	412	490	124	6	3,407	755	464	288	125	30	0	0	2	98	0	7,458
<b>Total Deer Harvest</b>																		
Bucks		6,045	299	375	385	15	9,792	1,353	785	9,156	2,253	268	46	7	7	2,346	26	33,158
Does		2,043	2,200	2,449	822	158	3,078	615	4	5,456	1,242	12	16	6	0	656	10	18,768
Total		<b>8,088</b>	<b>2,499</b>	<b>2,824</b>	<b>1,208</b>	<b>173</b>	<b>12,871</b>	<b>1,968</b>	<b>789</b>	<b>14,612</b>	<b>3,496</b>	<b>280</b>	<b>62</b>	<b>12</b>	<b>7</b>	<b>3,002</b>	<b>36</b>	<b>51,926</b>
<b>Success</b>																		
		26%	52%	53%	36%	46%	54%	47%	79%	47%	36%	56%	38%	56%	23%	64%	56%	43%

### South Dakota Combined Deer Harvest 1975-2018



### South Dakota Combined Deer Licensing 1975-2018

