

# Statewide Combined Deer Harvest

There were 52,683 resident deer licenses (plus unlimited licenses) available in 2021 and 105,201 were issued. Nonresidents had 2,996 licenses (plus unlimited licenses) available and 9,901 were issued. Statewide, there were a total of 115,102 licenses sold that represented a total of 132,703 tags, an increase in 2,196 licenses and 4,488 tags from 2020. A total of 71,596 individual hunters were issued deer licenses in 2021, up from 70,469 in 2020.

All hunters that listed a valid email address were surveyed using Survey123 Software. Hunters who did not supply a valid email address were not surveyed. Response rates ranged from 35% for Apprentice Antlerless Deer to 75% for Lacreek Refuge Deer.

The projected statewide deer harvest was 55,142, a decrease of nearly 4,000 from 2020. This estimate included 29,099 whitetail bucks, 19,479 whitetail does, 5,400 mule bucks and 1,165 mule does. Decreases in white-tailed buck, white-tailed doe, mule buck, and mule doe harvest accounted for the decrease in overall harvest. Mule deer made up approximately 12% of the total harvest.

The 2021 overall statewide harvest success decreased to 42% from 46% in 2020. Harvest success ranged from 26% for Archery to 75% for West River Special Buck.

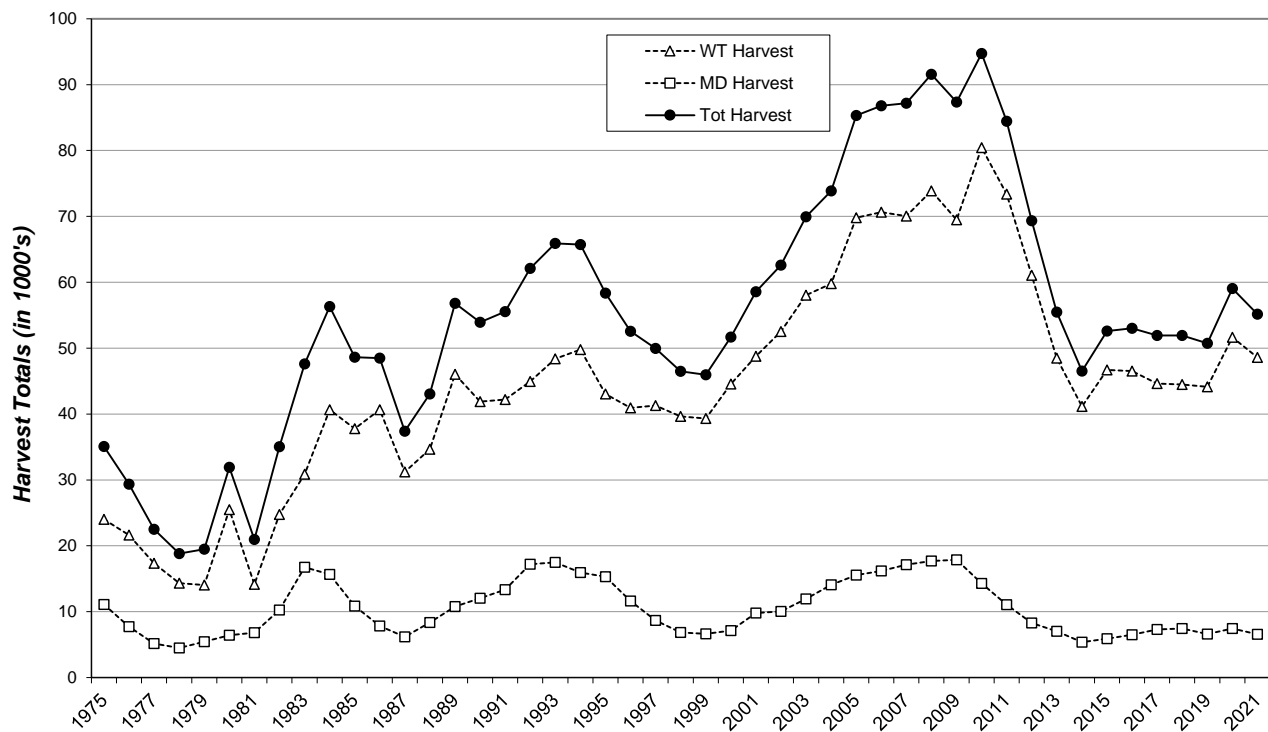
The total statewide estimate of 637,446 recreation days of deer hunting in 2021 results in an average of 5.54 days per hunter. Average hunter satisfaction values (1=very dissatisfied to 7=very satisfied) ranged from 4.22 for Lacreek Refuge Deer to 6.10 for Apprentice Antlerless Deer.

## 2021 Statewide Deer Harvest Projection Summary

last revised: 5 May 2022

SOUTH DAKOTA Harvest Statistic	Season																			Grand Totals
		Archery	Apprentice Antlerless	Youth Antlerless	Mentored Youth Antlerless	Muzzleloader	Landowner Own Land Antlerless	West River	West River Landowner Own Land	West River Special Buck Unit	East River	East River Landowner Own Land	East River Special Buck Unit	Sand Lake NWR	Waubay NWR	Lacreek NWR	Black Hills	Black Hills Landowner Own Land	Custer State Park	
<u>Licenses/Tags</u>														Refuges						
Resident Licenses	Available	Unlimited	Unlimited	Unlimited	Unlimited	Unlimited	Unlimited	21,223	Unlimited	1,000	26,240	Unlimited	500	105	20	20	3,500	Unlimited	75	52,683
	Sold	30,530	640	3,400	6,083	3,358	568	19,359	2,710	959	25,907	7,433	496	104	19	15	3,507	40	73	105,201
Resident Tags	Available	Unlimited	Unlimited	Unlimited	Unlimited	Unlimited	Unlimited	31,793	Unlimited	1,000	27,440	Unlimited	500	105	20	20	3,500	Unlimited	75	64,453
	Sold	30,530	640	3,400	6,083	3,358	568	28,412	4,360	959	27,095	12,149	496	104	19	15	3,507	58	73	121,826
Nonresident Licenses	Available	Unlimited	Unlimited	Unlimited	Unlimited	Unlimited	Unlimited	1,702	Unlimited	1,000	Leftovers	Unlimited	N/A	10	2	2	280	N/A	N/A	2,996
	Sold	5,851	1	412	124	133	17	1,713	78	1,032	129	128	N/A	10	2	2	269	N/A	N/A	9,901
Nonresident Tags	Available	Unlimited	Unlimited	Unlimited	Unlimited	Unlimited	Unlimited	2,548	Unlimited	1,000	Leftovers	Unlimited	N/A	10	2	2	280	N/A	N/A	3,842
	Sold	5,851	1	412	124	133	17	2,647	120	1,032	129	128	N/A	10	2	2	269	N/A	N/A	10,877
Total Licenses	Available	Unlimited	Unlimited	Unlimited	Unlimited	Unlimited	Unlimited	22,925	Unlimited	2,000	26,240	Unlimited	500	115	22	22	3,780	Unlimited	75	55,679
	Sold	36,381	641	3,812	6,207	3,491	585	21,072	2,788	1,991	26,036	7,561	496	114	21	17	3,776	40	73	115,102
Total Tags	Available	Unlimited	Unlimited	Unlimited	Unlimited	Unlimited	Unlimited	34,341	Unlimited	2,000	27,440	Unlimited	500	115	22	22	3,780	Unlimited	75	68,295
	Sold	36,381	641	3,812	6,207	3,491	585	31,059	4,480	1,991	27,224	12,277	496	114	21	17	3,776	58	73	132,703
Hunters		27,445	641	3,812	6,207	3,491	472	19,940	2,788	1,991	24,928	7,561	496	114	21	17	3,776	40	73	71,596
<u>Recreation</u>																				
Average Days Hunted		11.87	3.09	3.89	3.92	4.87	3.16	3.42	4.00	3.64	4.17	4.64	5.09	3.08	2.55	3.44	4.88	4.62	3.07	5.54
Total Days Hunted		325,791	1,984	14,836	24,345	17,005	1,493	68,136	11,152	7,247	108,565	35,083	2,524	351	54	59	18,413	185	224	637,446
Mean Satisfaction Score		5.23	6.10	5.57	5.69	5.01	5.29	5.12	5.22	5.61	5.01	5.07	5.20	4.64	4.63	4.22	5.49	5.67	5.16	
<u>Harvest</u>																				
<u>White-tailed Deer</u>																				
Bucks		6,100	21	175	301	235	3	6,710	790	1,014	8,578	2,908	273	39	8	9	1,896	20	20	29,099
Does		2,260	323	1,522	2,446	711	250	4,941	406	19	4,689	1,454	7	5	1	0	418	3	23	19,479
Total		8,360	344	1,697	2,747	947	253	11,651	1,197	1,032	13,267	4,363	279	44	9	9	2,314	22	43	48,577
<u>Mule Deer</u>																				
Bucks		1,112	0	8	5	110	0	3,026	366	454	168	59	16	0	0	0	73	3	0	5,400
Does		163	18	156	225	8	0	336	210	10	17	12	2	0	0	0	0	8	0	1,165
Total		1,275	18	164	230	118	0	3,362	576	464	185	70	18	0	0	0	73	10	0	6,564
<u>Total Deer Harvest</u>																				
Bucks		7,212	21	183	306	345	3	9,736	1,156	1,468	8,746	2,967	289	39	8	9	1,969	22	20	34,498
Does		2,423	341	1,679	2,671	720	250	5,277	616	29	4,705	1,466	8	5	1	0	418	10	23	20,643
Total		9,635	362	1,861	2,977	1,065	253	15,013	1,772	1,497	13,452	4,433	297	44	9	9	2,387	33	43	55,142
Success		26%	57%	49%	48%	31%	43%	48%	40%	75%	49%	36%	60%	38%	44%	53%	63%	56%	59%	42%

## South Dakota Combined Deer Harvest 1975-2021



## South Dakota Combined Deer Licensing 1975-2021

