

SPRING PRAIRIE TURKEY

The 2020 Spring Prairie Turkey season was open April 11 through May 31 for all units except Davison/Hanson, and Lincoln, which had split seasons. License sales totaled 6,455 (5,500 residents and 955 nonresidents) compared to 6,375 in 2019. There were 6,551 licenses available and overall tag sales totaled 7,103. Only single and double tag male turkey licenses were available.

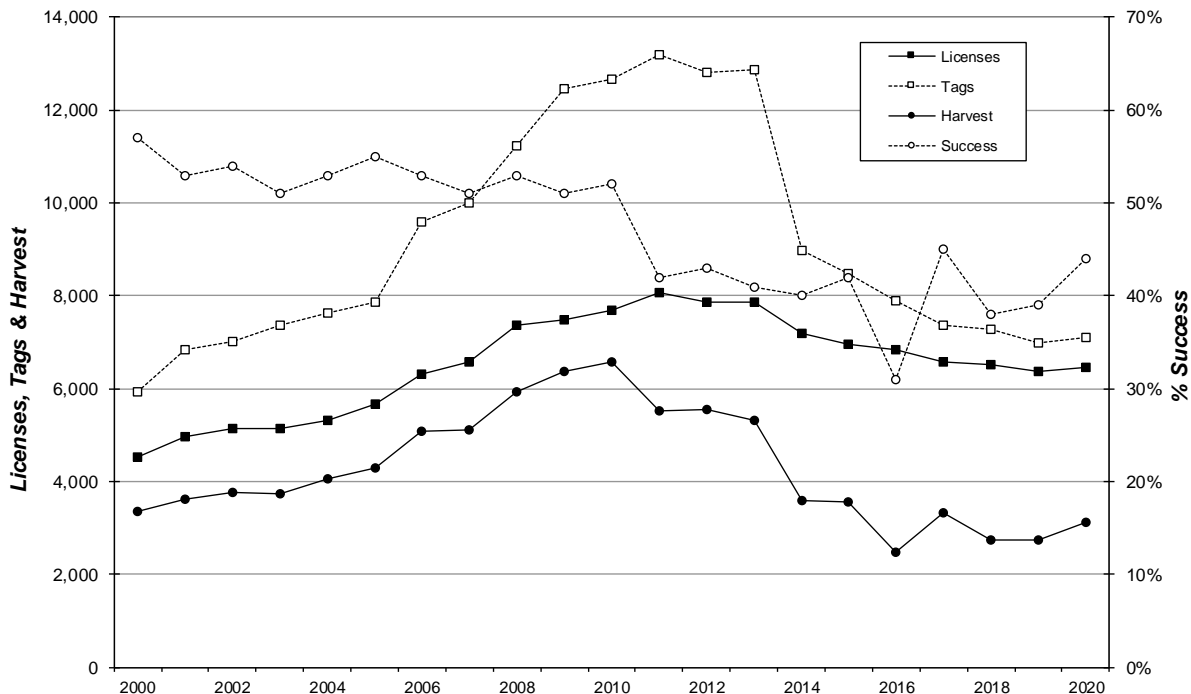
The survey sample size was 4,783 (82% of all hunters) and the response rate was 74%. Surveys were sent via email and regular mail. The reported overall success rate for hunters was 44% and the projected harvest was 3,113 turkeys, including 6 hens.

Spring prairie turkey hunters averaged 2.70 days hunting for a projected total of 15,833 hunting days. Respondents were asked to gauge their satisfaction of the season (1 being least satisfied, 7 being most satisfied) and the average response was 5.48.

Comparison of the 2011-2020 Spring Prairie Turkey Seasons

Year	Resident Licenses	Nonres Licenses	Tags	Harvest		Success	Avg Days Hunted	Satisf
				Males	Hens			
2011	6,817	1,247	13,203	4,989	547	42%	2.70	5.50
2012	6,479	1,384	12,802	5,112	442	43%	2.58	5.67
2013	6,489	1,385	12,879	4,732	481	41%	2.57	5.33
2014	5,888	1,301	8,962	3,491	106	40%	2.40	5.26
2015	5,604	1,357	8,470	3,555	10	42%	2.64	5.34
2016	5,648	1,202	7,907	2,482	4	31%	2.72	5.49
2017	5,364	1,213	7,371	3,323	5	45%	2.50	5.55
2018	5,364	1,146	7,287	2,724	9	38%	2.18	5.49
2019	5,250	1,125	6,977	2,722	5	39%	2.14	5.39
2020	5,500	955	7,103	3,107	6	44%	2.70	5.48

Spring Firearm Prairie Turkey 2000-2020



2020 Spring Prairie Turkey Harvest Projections

Last Revised:
09/10/2020

Unit	License Type	Hunters	Licenses										Harvest Projections						Avg Days Hunted	Mean Satisfactn Score							
			Resident					Nonresident					Response Rate	Tags sold	Tag Success	Hunter Success	LCI	UCI			License Type	1st tag	2nd tag	Males			Total Harvest
			Appl. 1st Choice *	Avail.	Sold	Appl. 1st Choice *	Avail.	Sold	Adults	Jakes	Hens																
01A	32	80	102	80	80	0	0	0	80%	80	38%	38%	32%	44%	32	38%	27	4	0	30	3.07	5.76					
02A	32	161	41	200	119	28	16	97	69%	216	57%	55%	48%	62%	32	57%	109	14	0	123	2.37	5.65					
06A	32	20	76	20	20	0	0	0	70%	20	43%	43%	30%	58%	32	43%	9	0	0	9	3.86	5.00					
07A	32	260	303	260	260	0	0	0	78%	260	53%	53%	48%	58%	32	53%	117	19	2	138	2.99	5.83					
08A	32	78	84	80	78	0	0	0	79%	78	44%	44%	38%	49%	32	44%	34	0	0	34	3.97	5.46					
08B	32	74	39	80	81	0	0	0	68%	81	26%	24%	17%	32%	32	26%	21	0	0	21	2.96	5.39					
11A	32	25	15	30	32	9	3	1	84%	33	40%	43%	29%	56%	32	40%	12	1	0	13	2.86	5.14					
12A	32	250	211	250	250	0	0	0	75%	250	55%	55%	50%	60%	32	55%	127	10	0	137	3.16	5.78					
13A	32	121	43	150	135	0	0	15	78%	150	55%	59%	53%	65%	32	55%	57	25	0	82	2.48	5.95					
15A	32	290	87	350	237	78	28	139	74%	376	45%	45%	40%	51%	32	45%	158	11	2	171	2.48	5.57					
16A	32	10	20	10	10	0	0	0	70%	10	71%	71%	50%	80%	32	71%	4	3	0	7	3.00	5.67					
17A	32	351	337	350	351	0	0	0	76%	351	47%	47%	42%	52%	32	47%	156	9	0	165	2.76	5.44					
19A	32	119	86	120	120	0	0	0	73%	120	40%	41%	35%	46%	32	40%	43	6	0	48	3.28	5.20					
20A	32	54	34	50	49	4	4	5	80%	54	37%	37%	31%	44%	32	37%	19	1	0	20	1.79	5.32					
21A	32	133	42	150	126	18	12	36	72%	162	38%	40%	34%	46%	32	38%	49	13	0	62	2.81	4.80					
22A	32	80	167	80	80	0	0	0	70%	80	57%	57%	50%	64%	32	57%	41	4	0	46	3.41	5.60					
23A	32	100	145	100	100	0	0	0	81%	100	53%	53%	48%	58%	32	53%	50	3	0	53	4.20	5.48					
24A	32	106	48	150	109	11	12	14	73%	123	19%	19%	14%	24%	32	19%	21	3	0	24	0.81	5.10					
27A	32	72	48	75	69	26	6	12	82%	81	51%	51%	44%	58%	32	51%	31	11	0	41	3.10	5.24					
29A	32	217	287	220	217	0	0	0	76%	217	61%	61%	56%	66%	32	61%	122	9	0	132	3.72	5.63					
30A	32	704	513	700	697	129	56	50	73%	747	41%	41%	36%	46%	32	41%	260	43	0	303	1.89	5.41					
31A	35	193	66	200	174	24	16	43	70%	434	34%	46%	40%	52%	35	44%	24%	132	16	2	150	2.45	5.70				
32A	32	10	12	10	10	0	0	0	80%	10	25%	25%	20%	40%	32	25%	3	0	0	3	2.43	5.67					
35A	32	103	80	100	101	16	8	7	76%	108	26%	27%	22%	32%	32	26%	20	8	0	28	2.22	5.21					
36A	32	30	50	30	30	0	0	0	93%	30	54%	54%	50%	57%	32	54%	12	4	0	16	3.46	5.15					
37A	32	60	77	60	60	0	0	0	83%	60	38%	38%	32%	44%	32	38%	20	2	0	23	3.65	5.23					
39A	32	121	50	150	106	59	12	37	74%	143	36%	34%	28%	40%	32	36%	47	4	0	51	1.42	5.57					
40A	32	10	14	10	10	0	0	0	70%	10	43%	43%	30%	60%	32	43%	4	0	0	4	4.00	5.17					
41A	32	68	21	75	45	3	6	35	57%	80	52%	56%	45%	68%	32	52%	38	3	0	42	2.05	5.39					
44A	32	50	118	50	50	0	0	0	74%	50	38%	38%	30%	46%	32	38%	19	0	0	19	4.19	4.90					
44B	32	49	92	50	49	0	0	0	88%	49	40%	40%	35%	45%	32	40%	19	0	0	19	3.56	5.54					
45A	32	107	99	100	100	26	8	7	84%	107	43%	43%	39%	48%	32	43%	42	5	0	46	2.29	5.47					
48A	32	399	422	400	400	0	0	0	73%	400	54%	54%	49%	60%	32	54%	195	21	0	216	3.31	5.64					
49A	35	302	97	300	221	97	24	102	72%	646	40%	50%	45%	56%	35	49%	33%	240	17	0	257	2.87	5.39				
50A	32	289	64	350	236	17	28	142	72%	378	40%	46%	40%	52%	32	40%	131	20	0	151	2.05	5.50					
52A	32	60	58	60	60	0	0	0	82%	60	63%	63%	57%	69%	32	63%	33	5	0	38	5.25	5.59					
53A	35	103	22	100	78	7	8	30	73%	216	24%	33%	27%	39%	35	33%	15%	38	12	1	52	2.18	4.89				
56A	32	10	10	10	10	0	0	0	80%	10	75%	75%	60%	80%	32	75%	8	0	0	8	4.88	6.14					
58A	32	44	44	40	43	5	4	1	77%	44	59%	59%	51%	67%	32	59%	17	9	0	26	3.94	5.90					
58B	32	1	0	2	1	0	1	0	0%	1					32												
60A	32	324	145	400	296	42	32	132	70%	428	46%	47%	41%	53%	32	46%	181	16	0	197	1.74	5.28					
61A	32	20	32	20	20	0	0	0	50%	20	80%	80%	61%	90%	32	80%	12	4	0	16	5.22	5.60					
62A	32	120	195	120	119	0	0	1	82%	120	47%	47%	43%	51%	32	47%	55	1	0	56	5.31	5.62					
65A	32	22	6	40	19	8	4	11	84%	30	14%	19%	13%	29%	32	14%	4	0	0	4	0.50	5.90					
67A	32	64	17	75	42	1	6	38	53%	80	41%	43%	30%	55%	32	41%	33	0	0	33	1.26	5.87					
Totals		5,864	4,519	6,257	5,500	608	294	955	74%	7,103	43.8%						2,770	337	6	3,113	2.70	5.48					

Response rate for all units combined was **74.3%**

Satisfaction scale of 1=very dissatisfied to 7=very satisfied.

* Number of 1st drawing applicants with that season as 1st choice.