

SPRING PRAIRIE TURKEY

The 2023 Spring Prairie Turkey season was open April 8 through May 31 for all units except Davison/Hanson, and Lincoln, which had split seasons. License sales totaled 7,310 (5,878 residents and 1,432 nonresidents) compared to 6,658 in 2022. There were 7,365 licenses available and overall tag sales totaled 8,048. Only single and double tag male turkey licenses were available.

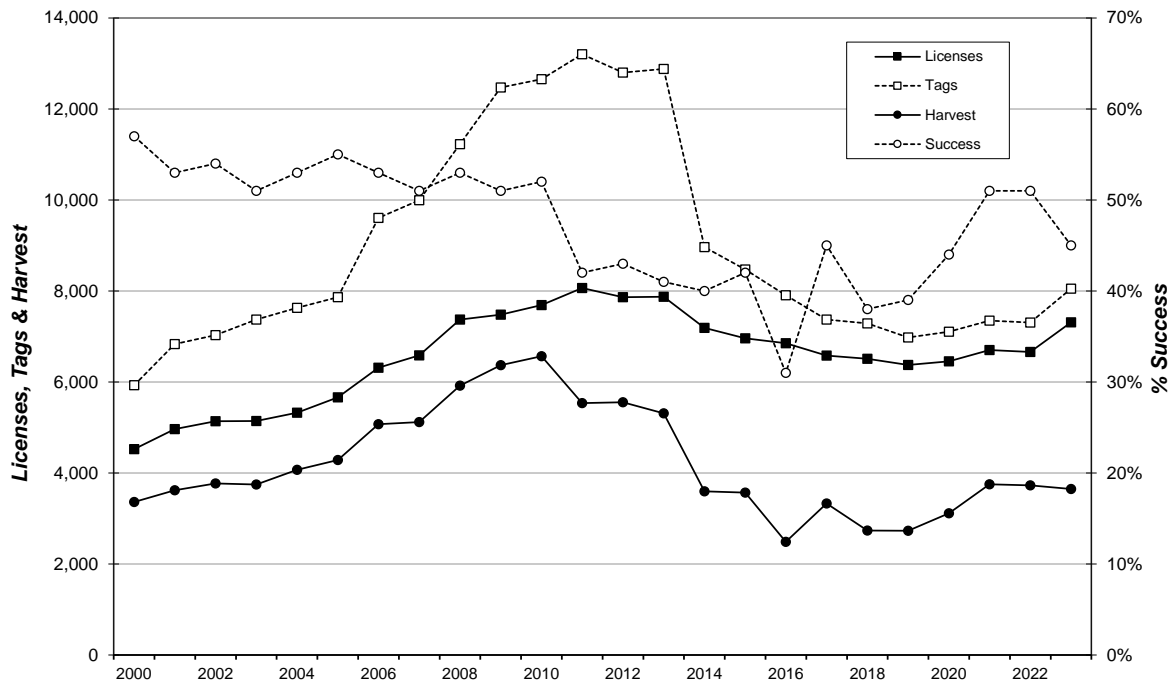
All license holders that provided a valid email address were surveyed using Survey123, and the response rate was 54%. The reported overall harvest success rate was 45% and the projected harvest was 3,647 turkeys.

Spring prairie turkey hunters averaged 2.65 days hunting for a projected total of 17,865 hunting days. Respondents were asked to gauge their satisfaction of the season (1 being least satisfied, 7 being most satisfied) and the average response was 5.40.

Comparison of the 2014-2023 Spring Prairie Turkey Seasons

Year	Resident Licenses	Nonres Licenses	Tags	Harvest		Success	Avg Days Hunted	Satisf
				Males	Hens			
2014	5,888	1,301	8,962	3,491	106	40%	2.40	5.26
2015	5,604	1,357	8,470	3,555	10	42%	2.64	5.34
2016	5,648	1,202	7,907	2,482	4	31%	2.72	5.49
2017	5,364	1,213	7,371	3,323	5	45%	2.50	5.55
2018	5,364	1,146	7,287	2,724	9	38%	2.18	5.49
2019	5,250	1,125	6,977	2,722	5	39%	2.14	5.39
2020	5,500	955	7,103	3,107	6	44%	2.70	5.48
2021	5,444	1,255	7,348	3,748	0	51%	2.57	5.75
2022	4,834	1,824	7,305	3,725	2	51%	2.69	5.61
2023	5,878	1,432	8,048	3,647	0	45%	2.65	5.40

Spring Firearm Prairie Turkey 2000-2023



2023 Spring Prairie Turkey Harvest Projections

Last Revised:
09/12/2023

		Licenses														Harvest Projections					Avg	Mean			
		Resident						Nonresident				Response	Tags	Tag	Hunter	LCI	UCI	1st	2nd	Males			Total	Days	Satisfctn
Unit	License	Hunters	Appl. 1st	Avail.	Sold	Appl. 1st	Avail.	Sold	Rate	sold	Success	Success	Success	Success	Success	Success	tag	tag	Adults	Jakes	Hens	Harvest	Hunted	Score	
01A	32	81	147	80	80	0	0	0	59%	80	43%	43%	33%	52%	43%			31	3	0	34	3.57	5.26		
02A	32	207	48	250	151	58	20	108	47%	259	37%	44%	36%	52%	37%			95	2	0	97	2.25	4.93		
06A	32	40	124	40	40	0	0	0	74%	40	48%	48%	38%	58%	48%			15	4	0	19	4.00	5.44		
07A	32	300	281	300	300	0	0	0	53%	300	51%	51%	46%	56%	51%			142	11	0	153	2.87	5.74		
08A	32	100	105	100	100	0	0	0	63%	100	50%	50%	42%	58%	50%			44	6	0	50	3.26	5.19		
08B	32	100	48	100	100	0	0	0	46%	100	27%	27%	17%	36%	27%			20	7	0	27	3.41	5.06		
10A	32	49	28	50	49	0	0	1	47%	50	43%	44%	28%	59%	43%			13	9	0	21	3.43	5.61		
11A	32	33	22	30	30	6	3	4	50%	34	29%	29%	15%	46%	29%			8	2	0	10	1.53	4.31		
12A	32	300	234	300	300	0	0	0	51%	300	57%	57%	51%	62%	57%			142	28	0	170	2.89	5.83		
13A	32	158	75	175	151	0	0	21	55%	172	49%	48%	41%	56%	49%			74	9	0	84	2.46	5.32		
15A	32	333	104	350	187	132	28	184	47%	371	56%	60%	54%	66%	56%			197	11	0	208	2.35	5.81		
16A	32	20	17	20	20	0	0	0	55%	20	45%	46%	25%	67%	45%			7	2	0	9	4.64	5.00		
17A	32	350	343	350	349	0	0	1	55%	350	52%	52%	47%	57%	52%			158	24	0	181	2.74	5.71		
19A	32	121	75	120	121	0	0	0	46%	121	42%	42%	34%	50%	42%			47	4	0	51	4.15	5.42		
20A	32	66	23	75	69	12	6	12	56%	81	45%	50%	38%	62%	45%			35	2	0	37	2.14	5.26		
21A	32	137	47	150	113	31	12	48	49%	161	37%	37%	28%	46%	37%			49	10	0	59	2.58	4.79		
22A	32	126	240	125	126	0	0	0	49%	126	45%	45%	36%	54%	45%			46	11	0	57	3.14	5.10		
23A	32	149	201	150	150	0	0	0	64%	150	52%	53%	46%	59%	52%			72	6	0	79	2.50	5.71		
24A	32	120	28	150	115	16	12	46	53%	161	45%	56%	46%	65%	45%			70	2	0	72	1.79	5.57		
27A	32	108	77	100	101	48	8	7	58%	108	36%	36%	28%	44%	36%			34	5	0	39	2.51	5.06		
29A	32	300	288	300	300	0	0	0	57%	300	49%	49%	44%	54%	49%			139	7	0	146	3.07	5.46		
30A	32	724	433	700	614	275	56	144	53%	758	45%	45%	42%	49%	45%			289	56	0	345	2.29	5.29		
31A	35	220	72	250	189	56	20	70	56%	518	30%	47%	40%	53%	43%	21%		128	29	0	157	2.41	5.36		
32A	32	20	50	20	19	0	0	1	60%	20	58%	58%	39%	75%	58%			10	2	0	12	4.64	5.00		
35A	32	109	104	100	99	62	8	8	60%	107	40%	39%	31%	47%	40%			37	5	0	43	1.95	5.54		
36A	32	30	49	30	30	0	0	0	80%	30	42%	42%	33%	51%	42%			9	4	0	13	3.96	4.40		
37A	32	70	61	70	70	0	0	0	56%	70	36%	36%	26%	46%	36%			25	0	0	25	2.16	5.44		
39A	32	156	44	200	99	71	16	114	54%	213	46%	53%	45%	62%	46%			96	2	0	98	2.74	4.67		
40A	32	20	43	20	20	0	0	0	75%	20	40%	40%	30%	54%	40%			7	1	0	8	2.07	5.64		
41A	32	70	25	75	38	19	6	42	32%	80	38%	38%	20%	56%	38%			30	0	0	30	1.60	4.75		
44A	32	50	111	50	50	0	0	0	68%	50	35%	35%	26%	45%	35%			16	1	0	18	3.12	5.45		
44B	32	49	88	50	49	0	0	0	69%	49	38%	38%	29%	48%	38%			17	1	0	19	2.74	4.90		
45A	32	161	130	150	148	31	12	12	62%	160	52%	52%	46%	58%	52%			66	18	0	84	2.00	5.60		
48A	32	450	422	450	450	0	0	0	58%	450	43%	43%	39%	47%	43%			177	18	0	194	2.71	5.50		
49A	35	348	123	350	231	115	28	141	52%	744	49%	66%	61%	71%	64%	35%		340	21	0	362	3.27	5.69		
50A	32	302	85	350	207	71	28	168	54%	375	53%	54%	49%	60%	53%			168	31	0	199	2.36	5.29		
52A	32	60	71	60	60	0	0	0	63%	60	45%	45%	35%	55%	45%			24	3	0	27	3.24	5.29		
53A	35	91	24	100	63	20	8	44	48%	214	39%	51%	39%	63%	50%	28%		47	36	0	83	2.81	5.19		
56A	32	10	17	10	10	0	0	0	44%	10	25%	25%	10%	64%	25%			3	0	0	3	2.00	4.00		
58A	32	44	72	40	40	6	4	4	58%	44	48%	48%	35%	61%	48%			16	5	0	21	3.75	6.00		
58B	32	3	3	2	2	0	1	0	100%	2	75%	50%	50%	50%	75%			2	0	0	2	1.00	7.00		
60A	32	320	96	400	237	66	32	179	52%	416	38%	43%	37%	49%	38%			142	16	0	158	1.98	5.11		
61A	32	30	58	20	30	0	0	0	62%	30	67%	67%	52%	80%	67%			20	0	0	20	3.67	6.13		
62A	32	120	156	120	120	0	0	0	59%	120	49%	49%	41%	56%	49%			55	3	0	58	3.22	5.55		
65A	32	37	10	40	16	9	4	27	50%	43	57%	67%	49%	84%	57%			23	2	0	25	1.39	5.60		
67A	32	60	13	75	35	22	6	46	45%	81	54%	58%	42%	74%	54%			42	2	0	44	1.62	5.91		
Totals		6,752	4,915	7,047	5,878	1,126	318	1,432	54%	8,048	45.3%							3,225	422	0	3,647	2.65	5.40		

Response rate for all units combined was **54.3%**

Satisfaction scale of 1=very dissatisfied to 7=very satisfied.

* Number of 1st drawing applicants with that season as 1st choice.