

PRAIRIE CHICKEN & SHARP-TAILED GROUSE

Historically, these two species, plus ruffed grouse, have been combined under the name "Prairie Grouse." In these reports, harvest estimates for these species were combined. In 2006, hunters were asked specifically how many of each species were harvested of the total harvest and 76% were identified as sharp-tailed grouse, 20% as prairie chickens, and 4% were unknown. They continue to be combined for the overall harvest estimates in this report.

The 2020 grouse season covered 19 September 2020 – 3 January 2021 statewide. Harvest surveys were sent to both resident and nonresident hunters. The daily limit was 3 birds, possession 15. To hunt grouse residents required to hold small game, 1-day small game, adult, senior or junior combination, or youth small game licenses; nonresidents were required to obtain adult or youth small game or nonresident shooting preserve licenses. Harvest surveys were sent to both resident and nonresident hunters. No shooting preserve license holders were surveyed and none of their harvest is included in any of the data in this report.

In 2020, there were 86,796 resident and 66,540 nonresident licenses issued that allowed holders to hunt prairie grouse. Approximately 15,000 residents and 15,000 nonresidents were surveyed for the upland bird seasons. Survey response rates were 28% for residents and 32% for nonresidents.

Based on survey responses indicating at least one day of hunting grouse, there were a projected 10,487 resident and 6,389 nonresident grouse hunters. A projected total of 67,261 grouse were harvested (48,947 by residents, 18,314 by nonresidents) during the 2020 season.

When asked their satisfaction on the season, (1 being very dissatisfied, and 7 being very satisfied), resident upland bird hunters reported an average rating of 5.06 while nonresidents reported a rating of 5.75.

Comparison of the 2011 - 2020 prairie grouse season statistics

Year	Residents					Nonresidents				
	Hunters	Harvest	Ave Day Hunted	Ave Bag	Satisfaction	Hunters	Harvest	Ave Day Hunted	Ave Bag	Satisfaction
2011	6,789	27,581	4.19	4.09	4.78	6,407	20,718	4.01	3.26	5.63
2012	7,197	31,223	4.68	4.38	4.65	7,037	19,005	3.83	2.70	5.14
2013	7,149	19,858	4.28	2.76	4.11	4,523	7,840	3.87	1.73	4.95
2014	6,503	25,847	4.55	4.01	4.85	4,254	9,943	3.99	2.31	5.52
2015	7,866	34,506	4.72	4.40	4.98	5,032	15,388	4.05	3.08	5.49
2016	7,199	31,611	4.88	4.40	4.72	5,203	11,294	4.04	2.18	5.43
2017	5,703	15,863	4.57	2.80	4.23	3,645	6,290	3.81	1.73	5.06
2018	5,868	16,431	4.36	2.83	4.64	3,979	7,429	4.08	1.87	5.38
2019	5,583	18,601	4.45	3.33	4.67	4,637	11,452	3.74	2.47	5.28
2020	10,487	48,947	5.14	4.78	5.06	6,389	18,314	4.33	2.88	5.75

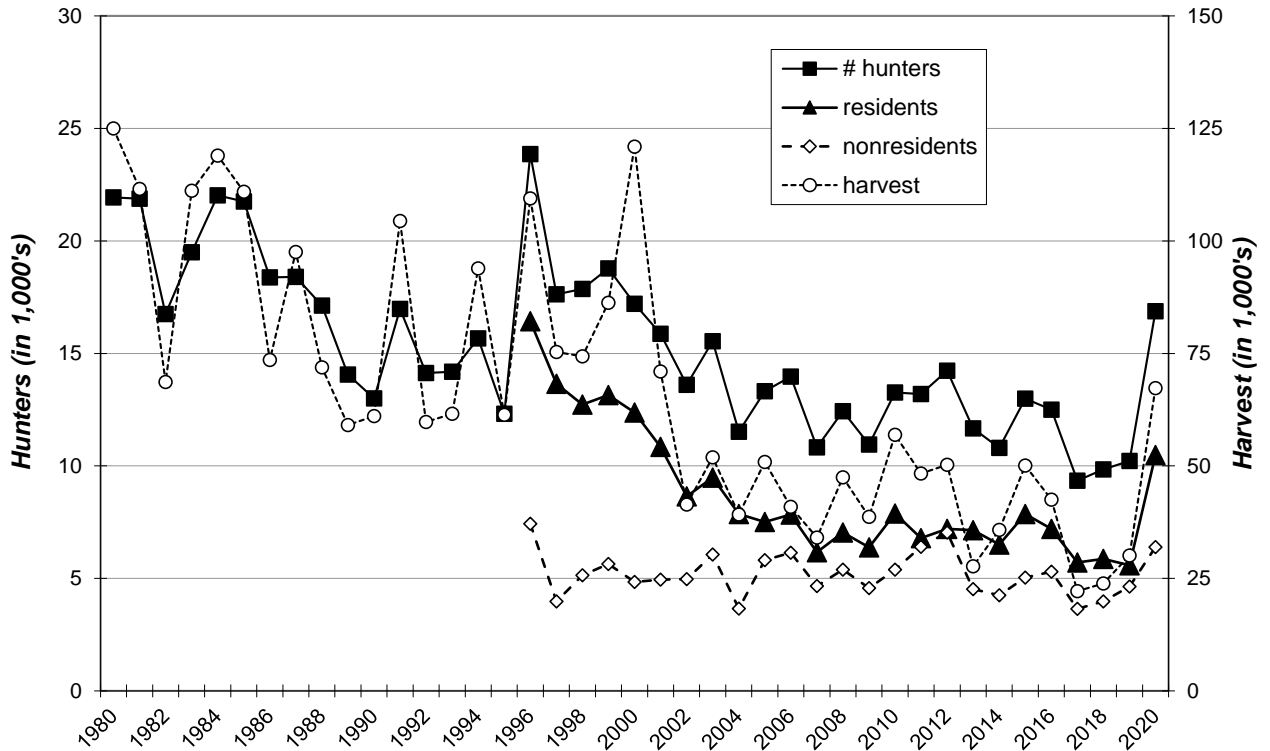
PRAIRIE GROUSE HARVEST PROJECTIONS FOR 2020

Revised:
4/20/2021

	RESIDENT TOTALS BY LICENSE TYPE						NONRESIDENT TOTALS		
	Combo	Junior Combo	Senior Combo	Small Game	Youth SmGm	Sum Estimates	Nonres Sm Game	Youth Sm Game	Sum Estimates
Licenses Sold	47,644	8,764	10,574	15,887	3,927	86,796	64,631	1,909	66,540
Projected ACTIVE UPLAND BIRD HUNTERS	32,332	5,587	5,973	12,947	3,201	60,039	61,098	1,796	62,894
Number Sampled by Survey	8,183	1,527	1,818	2,782	690	15,000	14,597	403	15,000
Number Responded to Survey	2,455	251	740	562	200	4,208	4,752	88	4,840
% Responded and Participated in Season	68%	64%	56%	81%	82%	68%	97%	97%	97%
Responded and Participated in Season	1,666	160	418	458	163	2,865	4,607	85	4,692
Responded but DID NOT HUNT	789	91	322	104	37	1,343	145	3	148
Survey Response Rate	30.0%	16.4%	40.7%	20.2%	29.0%	28.1%	32.6%	21.8%	32.3%
No. Hunters Reporting Prairie Grouse Days	347	21	68	53	28	517	469	8	477
Sum Prairie Grouse Hunted Days	1,733	111	394	262	156	2,656	2,037	28	2,065
Average Days Hunted Prairie Grouse	4.99	5.29	5.79	4.94	5.57	5.14	4.34	3.50	4.33
Sum Prairie Grouse Bagged	1,831	80	298	141	121	2,471	1,365	10	1,375
Average Season Prairie Grouse Bag	5.28	3.81	4.38	2.66	4.32	4.78	2.91	1.25	2.88
Projected Days Prairie Grouse Hunting	33,632	3,876	5,630	7,406	3,063	53,607	27,015	592	27,606
Projected No. Prairie Grouse Hunters	6,734	733	972	1,498	550	10,487	6,220	169	6,389
Projected Prairie Grouse Bag	35,534	2,793	4,258	3,986	2,376	48,947	18,103	211	18,314
	TOTAL PRAIRIE GROUSE HARVEST =						67,261		
Upland Bird Hunters Mean Satisfaction Score *	5.08	5.35	4.68	5.15	5.21	5.06	5.75	5.58	5.75

* Based on scale of 1-7 with 1="very dissatisfied" and 7="very satisfied"

PRAIRIE GROUSE HUNTERS & HARVEST 1980-2020



Resident Grouse Harvest Distribution by County 2020

COUNTY	HUNTER DISTRIBUTION				HARVEST DISTRIBUTION				Birds/Hunter
	# Reported	# Projected	% of Total	# Proj w/ Unk *	# Reported	# Projected	% of Total	# Proj w/ Unk *	
Minnehaha	0	0	0.0	0	0	0	0.0	0	0
Pennington	28	568	5.8	609	130	2,575	5.6	2,722	4.5
Brown	1	20	0.2	22	0	0	0.0	0	0.0
Beadle	2	41	0.4	44	4	79	0.2	84	2.0
Codington	1	20	0.2	22	0	0	0.0	0	0.0
Brookings	0	0	0.0	0	0	0	0.0	0	0
Yankton	1	20	0.2	22	2	40	0.1	42	2.0
Davison	2	41	0.4	44	2	40	0.1	42	1.0
Lawrence	5	101	1.0	109	7	139	0.3	147	1.4
Aurora	3	61	0.6	65	6	119	0.3	126	2.0
Bennett	14	284	2.9	305	51	1,010	2.2	1,068	3.6
Bon Homme	0	0	0.0	0	0	0	0.0	0	0
Brule	7	142	1.5	152	18	357	0.8	377	2.5
Buffalo	2	41	0.4	44	0	0	0.0	0	0.0
Butte	8	162	1.7	174	32	634	1.4	670	3.9
Campbell	4	81	0.8	87	4	79	0.2	84	1.0
Charles Mix	8	162	1.7	174	7	139	0.3	147	0.9
Clark	0	0	0.0	0	0	0	0.0	0	0
Clay	0	0	0.0	0	0	0	0.0	0	0
Corson	12	243	2.5	261	46	911	2.0	963	3.7
Custer	5	101	1.0	109	24	475	1.0	502	4.7
Day	3	61	0.6	65	18	357	0.8	377	5.9
Deuel	1	20	0.2	22	2	40	0.1	42	2.0
Dewey	20	406	4.1	435	153	3,031	6.5	3,203	7.5
Douglas	0	0	0.0	0	0	0	0.0	0	0
Edmunds	1	20	0.2	22	1	20	0.0	21	1.0
Fall River	9	183	1.9	196	72	1,426	3.1	1,507	7.8
Faulk	1	20	0.2	22	0	0	0.0	0	0.0
Grant	7	142	1.5	152	7	139	0.3	147	1.0
Gregory	5	101	1.0	109	8	158	0.3	167	1.6
Haakon	26	527	5.4	566	120	2,377	5.1	2,512	4.5
Hamlin	0	0	0.0	0	0	0	0.0	0	0
Hand	5	101	1.0	109	9	178	0.4	188	1.8
Hanson	0	0	0.0	0	0	0	0.0	0	0
Harding	15	304	3.1	326	72	1,426	3.1	1,507	4.7
Hughes	11	223	2.3	239	20	396	0.9	419	1.8
Hutchinson	0	0	0.0	0	0	0	0.0	0	0
Hyde	6	122	1.2	131	12	238	0.5	251	2.0
Jackson	13	264	2.7	283	107	2,120	4.6	2,240	8.0
Jerauld	2	41	0.4	44	1	20	0.0	21	0.5
Jones	19	385	3.9	413	141	2,793	6.0	2,952	7.2
Kingsbury	0	0	0.0	0	0	0	0.0	0	0
Lake	0	0	0.0	0	0	0	0.0	0	0
Lincoln	0	0	0.0	0	0	0	0.0	0	0
Lyman	38	771	7.9	827	94	1,862	4.0	1,968	2.4
McCook	0	0	0.0	0	0	0	0.0	0	0
McPherson	7	142	1.5	152	5	99	0.2	105	0.7
Marshall	2	41	0.4	44	3	59	0.1	63	1.5
Meade	36	730	7.5	783	229	4,536	9.8	4,794	6.2
Mellette	11	223	2.3	239	57	1,129	2.4	1,193	5.1
Miner	0	0	0.0	0	0	0	0.0	0	0
Moody	0	0	0.0	0	0	0	0.0	0	0
Perkins	45	913	9.3	979	167	3,308	7.1	3,496	3.6
Potter	8	162	1.7	174	39	773	1.7	816	4.8
Roberts	2	41	0.4	44	0	0	0.0	0	0.0
Sanborn	0	0	0.0	0	0	0	0.0	0	0
Spink	0	0	0.0	0	0	0	0.0	0	0
Stanley	50	1,014	10.4	1,088	457	9,053	19.5	9,568	8.9
Sully	6	122	1.2	131	7	139	0.3	147	1.1
Tripp	8	162	1.7	174	58	1,149	2.5	1,214	7.1
Turner	0	0	0.0	0	0	0	0.0	0	0
Union	0	0	0.0	0	0	0	0.0	0	0
Walworth	5	101	1.0	109	11	218	0.5	230	2.1
Ziebach	11	223	2.3	239	95	1,882	4.1	1,989	8.4
Oglala Lakota	1	20	0.2	22	4	79	0.2	84	3.9
Todd	5	101	1.0	109	36	713	1.5	754	7.0
Unknown	35	710	-	-	133	2,635	-	-	3.7
TOTALS:	517	10,487	100.0%	10,487	2,471	48,947	100%	48,947	4.67

Last Revised: 14 April 2021

* Includes unknown county projection values by assuming unknown county values are distributed the same as reported county values. Total values may be different due to rounding.

** Calculation uses "# projected" values without correction for unknown/unreported county values.

Nonresident Grouse Harvest Distribution by County 2020

COUNTY	HUNTER DISTRIBUTION				HARVEST DISTRIBUTION				Birds/Hunter
	# Reported	# Projected	% of Total	# Proj w/ Unk *	# Reported	# Projected	% of Total	# Proj w/ Unk *	
Minnehaha	0	0	0.0	0	0	0	0.0	0	0
Pennington	1	13	0.2	14	7	93	0.5	96	7.0
Brown	7	94	1.5	97	4	53	0.3	55	0.6
Beadle	0	0	0.0	0	0	0	0.0	0	0
Codington	2	27	0.4	28	0	0	0.0	0	0.0
Brookings	1	13	0.2	14	4	53	0.3	55	4.0
Yankton	3	40	0.6	41	8	107	0.6	110	2.7
Davison	2	27	0.4	28	0	0	0.0	0	0.0
Lawrence	0	0	0.0	0	0	0	0.0	0	0
Aurora	2	27	0.4	28	1	13	0.1	14	0.5
Bennett	11	147	2.4	152	37	493	2.8	509	3.3
Bon Homme	1	13	0.2	14	3	40	0.2	41	3.0
Brule	10	134	2.2	138	20	266	1.5	275	2.0
Buffalo	4	54	0.9	55	9	120	0.7	124	2.2
Butte	1	13	0.2	14	1	13	0.1	14	1.0
Campbell	5	67	1.1	69	11	147	0.8	151	2.2
Chas Mix	4	54	0.9	55	3	40	0.2	41	0.7
Clark	1	13	0.2	14	0	0	0.0	0	0.0
Clay	0	0	0.0	0	0	0	0.0	0	0
Corson	24	321	5.2	332	94	1,252	7.1	1,294	3.9
Custer	1	13	0.2	14	5	67	0.4	69	5.0
Day	9	121	1.9	124	21	280	1.6	289	2.3
Deuel	1	13	0.2	14	1	13	0.1	14	1.0
Dewey	29	388	6.3	401	128	1,705	9.6	1,763	4.4
Douglas	0	0	0.0	0	0	0	0.0	0	0
Edmunds	3	40	0.6	41	2	27	0.2	28	0.7
Fall River	1	13	0.2	14	14	186	1.1	193	13.9
Faulk	2	27	0.4	28	5	67	0.4	69	2.5
Grant	1	13	0.2	14	0	0	0.0	0	0.0
Gregory	6	80	1.3	83	3	40	0.2	41	0.5
Haakon	10	134	2.2	138	67	892	5.0	923	6.7
Hamlin	0	0	0.0	0	0	0	0.0	0	0
Hand	10	134	2.2	138	5	67	0.4	69	0.5
Hanson	0	0	0.0	0	0	0	0.0	0	0
Harding	8	107	1.7	111	35	466	2.6	482	4.4
Hughes	31	415	6.7	429	75	999	5.6	1,033	2.4
Hutchinson	0	0	0.0	0	0	0	0.0	0	0
Hyde	5	67	1.1	69	3	40	0.2	41	0.6
Jackson	5	67	1.1	69	27	360	2.0	372	5.4
Jerauld	6	80	1.3	83	13	173	1.0	179	2.2
Jones	27	362	5.8	373	97	1,292	7.3	1,336	3.6
Kingsbury	0	0	0.0	0	0	0	0.0	0	0
Lake	0	0	0.0	0	0	0	0.0	0	0
Lincoln	1	13	0.2	14	2	27	0.2	28	2.0
Lyman	66	884	14.3	913	163	2,171	12.3	2,244	2.5
McCook	0	0	0.0	0	0	0	0.0	0	0
McPherson	13	174	2.8	180	12	160	0.9	165	0.9
Marshall	2	27	0.4	28	2	27	0.2	28	1.0
Meade	4	54	0.9	55	11	147	0.8	151	2.7
Mellette	9	121	1.9	124	36	479	2.7	496	4.0
Miner	0	0	0.0	0	0	0	0.0	0	0
Moody	0	0	0.0	0	0	0	0.0	0	0
Perkins	28	375	6.1	387	132	1,758	9.9	1,818	4.7
Potter	12	161	2.6	166	28	373	2.1	386	2.3
Roberts	0	0	0.0	0	0	0	0.0	0	0
Sanborn	0	0	0.0	0	0	0	0.0	0	0
Spink	3	40	0.6	41	0	0	0.0	0	0.0
Stanley	37	496	8.0	512	144	1,918	10.8	1,983	3.9
Sully	9	121	1.9	124	25	333	1.9	344	2.8
Tripp	30	402	6.5	415	50	666	3.8	688	1.7
Turner	0	0	0.0	0	0	0	0.0	0	0
Union	0	0	0.0	0	0	0	0.0	0	0
Walworth	10	134	2.2	138	16	213	1.2	220	1.6
Ziebach	1	13	0.2	14	1	13	0.1	14	1.0
Oglala Lakota	0	0	0.0	0	0	0	0.0	0	0
Todd	3	40	0.6	41	5	67	0.4	69	1.7
Unknown	15	201	-	-	45	599	-	-	3.0
TOTALS:	477	6,389	100%	6,389	1,375	18,314	100%	18,314	2.87

Last Revised: 14 April 2021

* Includes unknown county projection values by assuming unknown county values are distributed the same as reported county values. Total values may be different due to rounding.

** Calculation uses "# projected" values without correction for unknown/unreported county values.