

MOURNING DOVE

The 2020 mourning dove season was open 1 September - 9 November statewide. The daily limit was 15 birds, possession 30. To hunt doves, residents were required to hold a small game, 1-day small game, adult, senior or junior combination, or youth small game license; nonresidents were required to obtain a nonresident small game or nonresident youth small game license. All hunters were also required to purchase a Migratory Bird Certificate.

In 2020, 25,856 resident and 66,540 nonresident licenses were issued to hunt doves. Approximately 39% of resident migratory bird hunters and 23% of nonresident small game hunters were surveyed for the mourning dove season. Survey response rates were 37% for residents and 32% for nonresidents.

Based on survey responses indicating at least one day of hunting doves, there were an estimated 7,260 active dove hunters. The five counties with the highest reported dove harvest were Hughes, Codrington, Brown, Minnehaha, and Brookings.

An estimated total of 129,622 doves were harvested during the 2020 season. When asked their satisfaction on the season, (1 being least, 7 being most satisfied), resident dove hunters reported an average satisfaction rating of 5.21, nonresidents 6.06.

Summary comparison of the 2011 - 2020 mourning dove seasons

Year	<i>Residents</i>					<i>Nonresidents</i>				
	<i>Number Hunters</i>	<i>Harvest</i>	<i>Ave Day Hunted</i>	<i>Ave Bag</i>	<i>Satisfaction</i>	<i>Number Hunters</i>	<i>Harvest</i>	<i>Ave Day Hunted</i>	<i>Ave Bag</i>	<i>Satisfaction</i>
2011	6,112	82,291	3.50	13.46	5.27	332	6,563	3.65	19.79	5.41
2012	5,984	88,036	4.16	14.71	4.99	366	7,071	3.19	19.78	5.78
2013	6,752	113,367	4.56	16.79	5.06	210	2,061	2.67	9.80	5.27
2014	8,345	167,407	4.67	20.06	5.05	316	3,991	2.95	12.62	5.71
2015	7,255	127,217	4.66	17.53	5.07	396	7,705	3.29	19.46	5.83
2016	7,131	122,876	4.19	17.23	4.89	318	3,601	2.79	11.32	5.59
2017	6,828	124,052	4.11	18.17	5.12	275	3,463	3.79	12.58	4.63
2018	6,531	120,835	4.16	18.50	5.12	275	3,571	3.22	13.00	5.72
2019	6,003	102,771	3.92	17.12	5.14	290	3,827	3.15	13.20	4.85
2020	6,844	122,464	4.45	17.89	5.21	416	7,158	3.55	17.23	6.06

MOURNING DOVE HARVEST PROJECTIONS FOR 2020

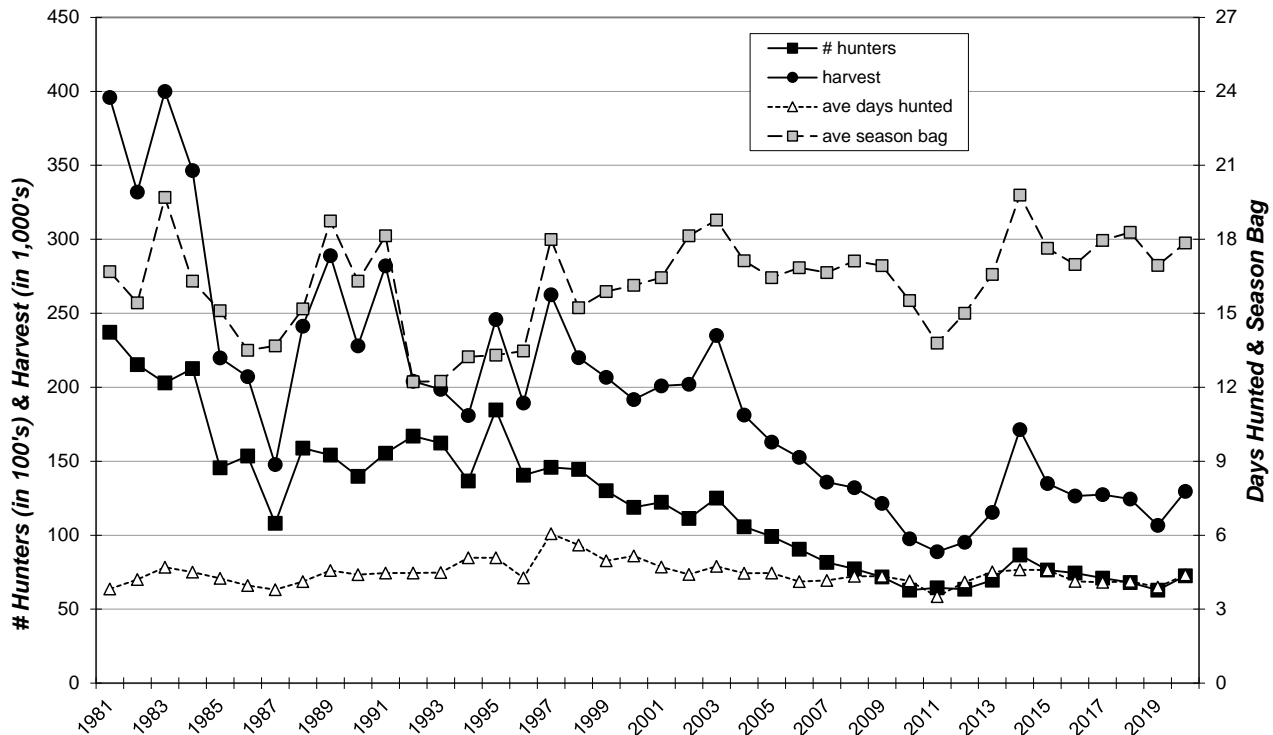
Last Revised: 28 May 2021

	Resident	Non Resident
Licenses Sold *	25,856	66,540
Unique License Holders	25,855	64,880
Projected ACTIVE MOURNING DOVE HUNTERS	6,844	416
Number Sampled by Survey	10,000	15,000
Number Responded to Survey	3,725	4,840
Responded and Participated in Season	986	31
Responded but DID NOT HUNT	2,739	4,809
Survey Response Rate	37.3%	32.3%
No. Hunters Reporting Dove Days	986	31
Total Reported Dove Hunted Days	4,384	110
Average Days Hunted Doves	4.45	3.55
Total Reported Doves Bagged	17,643	534
Average Dove Bag for Season	17.89	17.23
Projected Days Dove Hunting	30,430	1,475
Projected No. Dove Hunters	6,844	416
Projected Dove Bag	122,464	7,158
Avg Days Hunted		4.39
TOTAL DOVE HARVEST =		129,622
Dove Hunter Mean Satisfaction Score *1*	5.21	6.06

* Nonresident number represents total number of small game licenses sold.

1 Based on scale of 1-7 with 1=very dissatisfied & 7=very satisfied.

STATEWIDE MOURNING DOVE HARVEST, 1981-2020



Mourning Dove Harvest Distribution by County 2020

COUNTY	HUNTER DISTRIBUTION				HARVEST DISTRIBUTION				Birds/Hunter **
	# Reported	# Projected	% of Total	# Proj w/ Unk *	# Reported	# Projected	% of Total	# Proj w/ Unk *	
Minnehaha	56	400	5.6	405	804	5,733	4.5	5,793	14.3
Pennington	28	200	2.8	202	467	3,330	2.6	3,365	16.7
Brown	37	264	3.7	268	644	4,592	3.6	4,640	17.4
Beadle	20	143	2.0	145	342	2,439	1.9	2,464	17.1
Codington	48	343	4.8	347	673	4,799	3.7	4,849	14.0
Brookings	38	271	3.8	275	678	4,835	3.8	4,885	17.8
Yankton	22	157	2.2	159	333	2,375	1.9	2,399	15.1
Davison	25	178	2.5	181	440	3,138	2.4	3,170	17.6
Lawrence	12	86	1.2	87	81	578	0.5	584	6.7
Aurora	12	86	1.2	87	358	2,553	2.0	2,579	29.8
Bennett	10	71	1.0	72	215	1,533	1.2	1,549	21.5
Bon Homme	21	150	2.1	152	349	2,489	1.9	2,515	16.6
Brule	20	143	2.0	145	308	2,196	1.7	2,219	15.4
Buffalo	2	14	0.2	14	90	642	0.5	648	45.0
Butte	7	50	0.7	51	62	442	0.3	447	8.8
Campbell	3	21	0.3	22	61	435	0.3	440	20.3
Charles Mix	24	171	2.4	174	439	3,131	2.4	3,163	18.3
Clark	10	71	1.0	72	71	506	0.4	512	7.1
Clay	9	64	0.9	65	184	1,312	1.0	1,326	20.4
Corson	3	21	0.3	22	125	891	0.7	901	41.6
Custer	10	71	1.0	72	161	1,148	0.9	1,160	16.1
Day	14	100	1.4	101	92	656	0.5	663	6.6
Deuel	8	57	0.8	58	343	2,446	1.9	2,471	42.8
Dewey	1	7	0.1	7	3	21	0.0	22	3.0
Douglas	8	57	0.8	58	130	927	0.7	937	16.2
Edmunds	13	93	1.3	94	543	3,872	3.0	3,912	41.7
Fall River	18	128	1.8	130	346	2,467	1.9	2,493	19.2
Faulk	2	14	0.2	14	37	264	0.2	267	18.5
Grant	18	128	1.8	130	235	1,676	1.3	1,693	13.0
Gregory	5	36	0.5	36	88	628	0.5	634	17.6
Haakon	8	57	0.8	58	95	677	0.5	684	11.9
Hamlin	13	93	1.3	94	204	1,455	1.1	1,470	15.7
Hand	7	50	0.7	51	100	713	0.6	721	14.3
Hanson	13	93	1.3	94	145	1,034	0.8	1,045	11.1
Harding	0	0	0.0	0	0	0	0.0	0	0
Hughes	78	557	7.8	564	2,230	15,902	12.4	16,068	28.6
Hutchinson	9	64	0.9	65	152	1,084	0.8	1,095	16.9
Hyde	1	7	0.1	7	8	57	0.0	58	8.0
Jackson	8	57	0.8	58	165	1,177	0.9	1,189	20.6
Jerauld	2	14	0.2	14	5	36	0.0	36	2.5
Jones	9	64	0.9	65	245	1,747	1.4	1,765	27.2
Kingsbury	16	114	1.6	116	140	998	0.8	1,009	8.7
Lake	15	107	1.5	108	139	991	0.8	1,002	9.3
Lincoln	34	243	3.4	246	283	2,018	1.6	2,039	8.3
Lyman	20	143	2.0	145	558	3,979	3.1	4,021	27.9
McCook	29	207	2.9	210	424	3,024	2.4	3,055	14.6
McPherson	5	36	0.5	36	80	570	0.4	576	16.0
Marshall	9	64	0.9	65	98	699	0.5	706	10.9
Meade	28	200	2.8	202	407	2,902	2.3	2,933	14.5
Mellette	4	29	0.4	29	122	870	0.7	879	30.5
Miner	9	64	0.9	65	201	1,433	1.1	1,448	22.3
Moody	6	43	0.6	43	79	563	0.4	569	13.2
Perkins	9	64	0.9	65	154	1,098	0.9	1,110	17.1
Potter	8	57	0.8	58	290	2,068	1.6	2,090	36.2
Roberts	10	71	1.0	72	162	1,155	0.9	1,167	16.2
Sanborn	7	50	0.7	51	122	870	0.7	879	17.4
Spink	14	100	1.4	101	330	2,353	1.8	2,378	23.5
Stanley	33	236	3.3	239	509	3,630	2.8	3,667	15.4
Sully	23	164	2.3	166	472	3,366	2.6	3,401	20.5
Tripp	14	100	1.4	101	297	2,118	1.7	2,140	21.2
Turner	28	200	2.8	202	596	4,250	3.3	4,294	21.3
Union	15	107	1.5	108	205	1,462	1.1	1,477	13.7
Walworth	15	107	1.5	108	211	1,505	1.2	1,520	14.1
Ziebach	0	0	0.0	0	0	0	0.0	0	0
Shannon	0	0	0.0	0	0	0	0.0	0	0
Todd	1	7	0.1	7	60	428	0.3	432	59.9
Unk/Unreported	13	93	-	-	187	1,334	-	-	14.4
TOTALS:	1,017	7,260	100%	7,260	18,177	129,622	100%	129,622	17.86

Last Revised: 28 May 2021

* Includes unknown county projection values by assuming unknown county values are distributed the same as reported county values. Total values may be different due to rounding.

** Calculation uses "# projected" values without correction for unknown/unreported county values.