

# **MOURNING DOVE**

The 2021 mourning dove season was open 1 September - 9 November statewide. The daily limit was 15 birds, possession 30. To hunt doves, residents were required to hold a small game, 1-day small game, adult, senior or junior combination, or youth small game license; nonresidents were required to obtain a nonresident small game or nonresident youth small game license. All hunters were also required to purchase a Migratory Bird Certificate.

In 2021, 25,179 resident and 81,254 nonresident licenses were issued to hunt doves. Approximately 40% of resident migratory bird hunters and 19% of nonresident small game hunters were surveyed for the mourning dove season. Survey response rates were 36% for residents and 35% for nonresidents.

Based on survey responses indicating at least one day of hunting doves, there were an estimated 6,691 active dove hunters. The five counties with the highest reported dove harvests were Hughes, Codrington, Charles Mix, Yankton, and Brookings.

An estimated total of 114,659 doves were harvested during the 2021 season. When asked their satisfaction on the season, (1 being least, 7 being most satisfied), resident dove hunters reported an average satisfaction rating of 5.15, nonresidents 5.38.

## Summary comparison of the 2012 - 2021 mourning dove seasons

<i>Year</i>	<i>Residents</i>					<i>Nonresidents</i>				
	<i>Number Hunters</i>	<i>Harvest</i>	<i>Ave Day Hunted</i>	<i>Ave Bag</i>	<i>Satisfaction</i>	<i>Number Hunters</i>	<i>Harvest</i>	<i>Ave Day Hunted</i>	<i>Ave Bag</i>	<i>Satisfaction</i>
2012	5,984	88,036	4.16	14.71	4.99	366	7,071	3.19	19.78	5.78
2013	6,752	113,367	4.56	16.79	5.06	210	2,061	2.67	9.80	5.27
2014	8,345	167,407	4.67	20.06	5.05	316	3,991	2.95	12.62	5.71
2015	7,255	127,217	4.66	17.53	5.07	396	7,705	3.29	19.46	5.83
2016	7,131	122,876	4.19	17.23	4.89	318	3,601	2.79	11.32	5.59
2017	6,828	124,052	4.11	18.17	5.12	275	3,463	3.79	12.58	4.63
2018	6,531	120,835	4.16	18.50	5.12	275	3,571	3.22	13.00	5.72
2019	6,003	102,771	3.92	17.12	5.14	290	3,827	3.15	13.20	4.85
2020	6,844	122,464	4.45	17.89	5.21	416	7,158	3.55	17.23	6.06
2021	6,298	107,736	4.04	17.11	5.15	393	6,923	3.35	17.62	5.38

## **MOURNING DOVE HARVEST PROJECTIONS FOR 2021**

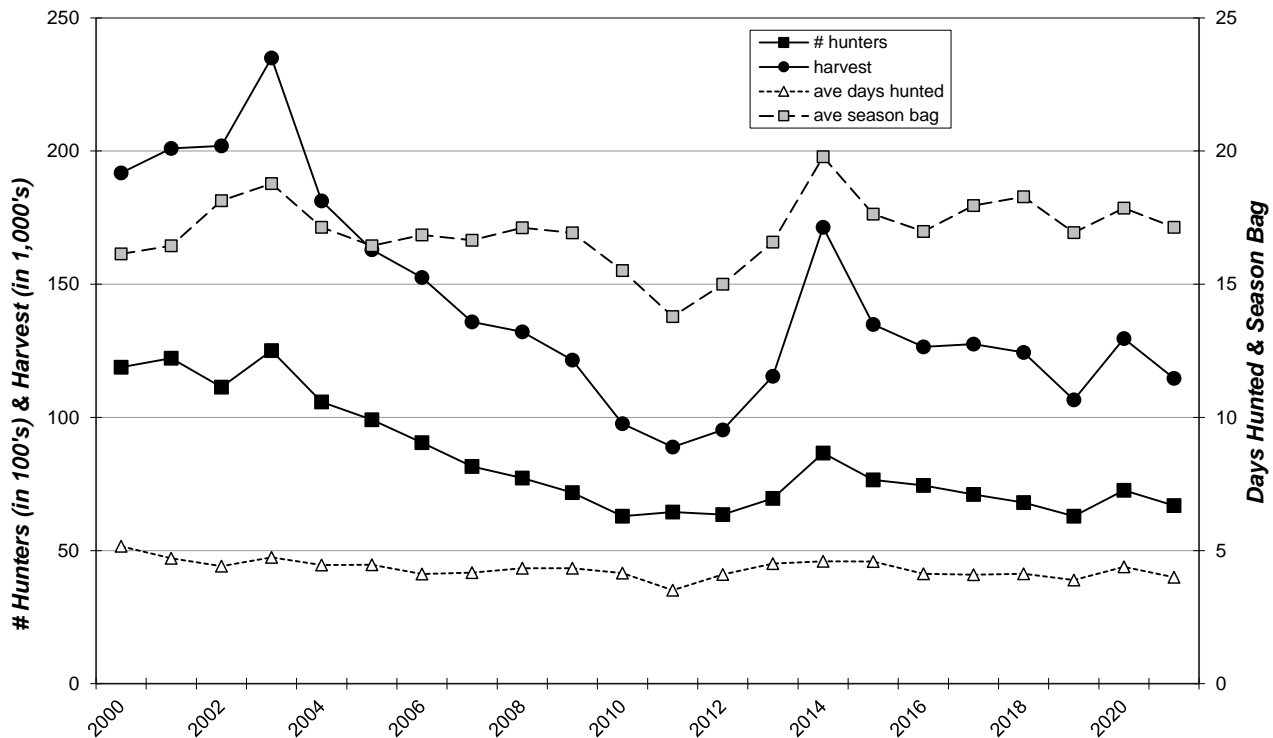
Last Revised: 11 Aug 2022

	Resident	Non Resident
<b>Licenses Sold *</b>	25,179	81,254
<b>Unique License Holders</b>	25,148	78,998
<b>Projected ACTIVE MOURNING DOVE HUNTERS</b>	<b>6,298</b>	<b>393</b>
Number Sampled by Survey	9,988	14,998
Number Responded to Survey	3,630	5,226
Responded and Participated in Season	908	26
Responded but DID NOT HUNT	<b>2,722</b>	<b>5,200</b>
<b>Survey Response Rate</b>	<b>36.3%</b>	<b>34.8%</b>
No. Hunters Reporting Dove Days	908	26
Total Reported Dove Hunted Days	3,671	87
<b>Average Days Hunted Doves</b>	<b>4.04</b>	<b>3.35</b>
Total Reported Doves Bagged	15,532	458
<b>Average Dove Bag for Season</b>	<b>17.11</b>	<b>17.62</b>
<b>Projected Days Dove Hunting</b>	<b>25,463</b>	<b>1,315</b>
<b>Projected No. Dove Hunters</b>	<b>6,298</b>	<b>393</b>
<b>Projected Dove Bag</b>	<b>107,736</b>	<b>6,923</b>
<b>Avg Days Hunted</b>		<b>4.00</b>
<b>TOTAL DOVE HARVEST =</b>		<b>114,659</b>
<b>Dove Hunter Mean Satisfaction Score *1*</b>	5.15	5.38

\* Nonresident number represents total number of small game licenses sold.

\*1\* Based on scale of 1-7 with 1=very dissatisfied & 7=very satisfied.

### STATEWIDE MOURNING DOVE HARVEST, 2000-2021



## Mourning Dove Harvest Distribution by County 2021

COUNTY	HUNTER DISTRIBUTION				HARVEST DISTRIBUTION				Birds/Hunter **
	# Reported	# Projected	% of Total	# Proj w/ Unk *	# Reported	# Projected	% of Total	# Proj w/ Unk *	
Minnehaha	44	315	4.8	320	486	3,485	3.1	3,528	11.1
Pennington	36	258	3.9	262	410	2,940	2.6	2,977	11.4
Brown	26	186	2.8	189	218	1,563	1.4	1,583	8.4
Beadle	16	115	1.7	116	350	2,510	2.2	2,541	21.9
Codington	34	244	3.7	248	511	3,664	3.2	3,710	15.0
Brookings	51	365	5.5	371	678	4,862	4.3	4,922	13.3
Yankton	26	186	2.8	189	563	4,037	3.6	4,087	21.7
Davison	20	143	2.2	146	309	2,216	2.0	2,243	15.5
Lawrence	4	29	0.4	29	0	0	0.0	0	0.0
Aurora	17	122	1.8	124	252	1,807	1.6	1,830	14.8
Bennett	11	79	1.2	80	196	1,405	1.2	1,423	17.8
Bon Homme	17	122	1.8	124	322	2,309	2.0	2,338	19.0
Brule	13	93	1.4	95	393	2,818	2.5	2,853	30.3
Buffalo	2	14	0.2	15	65	466	0.4	472	32.5
Butte	4	29	0.4	29	34	244	0.2	247	8.5
Campbell	1	7	0.1	7	35	251	0.2	254	35.0
Charles Mix	29	208	3.2	211	872	6,253	5.5	6,331	30.1
Clark	8	57	0.9	58	66	473	0.4	479	8.3
Clay	5	36	0.5	36	27	194	0.2	196	5.4
Corson	2	14	0.2	15	27	194	0.2	196	13.5
Custer	15	107	1.6	109	187	1,341	1.2	1,358	12.5
Day	19	136	2.1	138	411	2,947	2.6	2,984	21.7
Deuel	11	79	1.2	80	218	1,563	1.4	1,583	19.8
Dewey	3	21	0.3	22	26	186	0.2	189	8.7
Douglas	3	21	0.3	22	62	445	0.4	450	20.7
Edmunds	12	86	1.3	87	226	1,621	1.4	1,641	18.9
Fall River	20	143	2.2	146	368	2,639	2.3	2,672	18.4
Faulk	3	21	0.3	22	75	538	0.5	545	25.0
Grant	7	50	0.8	51	42	301	0.3	305	6.0
Gregory	7	50	0.8	51	143	1,025	0.9	1,038	20.4
Haakon	6	43	0.7	44	32	229	0.2	232	5.3
Hamlin	12	86	1.3	87	93	667	0.6	675	7.8
Hand	13	93	1.4	95	278	1,993	1.8	2,018	21.4
Hanson	7	50	0.8	51	94	674	0.6	682	13.4
Harding	1	7	0.1	7	6	43	0.0	44	6.0
Hughes	88	630	9.6	641	1,877	13,459	11.9	13,627	21.3
Hutchinson	16	115	1.7	116	180	1,291	1.1	1,307	11.3
Hyde	3	21	0.3	22	58	416	0.4	421	19.4
Jackson	10	72	1.1	73	188	1,348	1.2	1,365	18.8
Jerauld	2	14	0.2	15	17	122	0.1	123	8.5
Jones	7	50	0.8	51	106	760	0.7	770	15.2
Kingsbury	11	79	1.2	80	106	760	0.7	770	9.6
Lake	11	79	1.2	80	156	1,119	1.0	1,133	14.2
Lincoln	34	244	3.7	248	404	2,897	2.6	2,933	11.9
Lyman	16	115	1.7	116	432	3,098	2.7	3,136	27.0
McCook	14	100	1.5	102	216	1,549	1.4	1,568	15.4
McPherson	3	21	0.3	22	55	394	0.3	399	18.4
Marshall	7	50	0.8	51	31	222	0.2	225	4.4
Meade	26	186	2.8	189	379	2,718	2.4	2,752	14.6
Mellette	4	29	0.4	29	89	638	0.6	646	22.3
Miner	5	36	0.5	36	56	402	0.4	407	11.2
Moody	5	36	0.5	36	115	825	0.7	835	23.0
Perkins	9	64	1.0	66	168	1,205	1.1	1,220	18.7
Potter	8	57	0.9	58	233	1,671	1.5	1,692	29.2
Roberts	16	115	1.7	116	204	1,463	1.3	1,481	12.8
Sanborn	5	36	0.5	36	189	1,355	1.2	1,372	37.8
Spink	7	50	0.8	51	117	839	0.7	849	16.7
Stanley	18	129	2.0	131	337	2,417	2.1	2,447	18.7
Sully	21	150	2.3	153	505	3,621	3.2	3,666	24.1
Tripp	17	122	1.8	124	350	2,510	2.2	2,541	20.6
Turner	19	136	2.1	138	421	3,019	2.7	3,057	22.2
Union	16	115	1.7	116	222	1,592	1.4	1,612	13.9
Walworth	13	93	1.4	95	335	2,402	2.1	2,432	25.8
Ziebach	2	14	0.2	15	169	1,212	1.1	1,227	84.6
Shannon	0	0	0.0	0	0	0	0.0	0	0
Todd	1	7	0.1	7	3	22	0.0	22	3.0
Unk/Unreported	15	107	-	-	197	1,413	-	-	13.1
<b>TOTALS:</b>	<b>934</b>	<b>6,691</b>	<b>100%</b>	<b>6,691</b>	<b>15,990</b>	<b>114,659</b>	<b>100%</b>	<b>114,659</b>	<b>17.14</b>

Last Revised: 12 Aug 2022

\* Includes unknown county projection values by assuming unknown county values are distributed the same as reported county values. Total values may be different due to rounding.

\*\* Calculation uses "# projected" values without correction for unknown/unreported county values.