

EAST RIVER FIREARM DEER

There were 34,253 licenses issued for the 2020 East River Firearm Deer season (26,662 regular, 499 Special Buck and 7,092 Landowner Own Land Only) for a total of 41,335 tags.

The East River season was open 16 days from November 21 through December 6 in all units. The season was also open from December 12-20 for all unfilled antlerless deer tags.

All hunters were surveyed for the regular East River season, the East River Special Buck season, and the Landowner Own Land Only licenses. All hunters that listed an email address were surveyed using Survey123 Software. All hunters who did not respond or did not supply an email address were mailed post card requests to respond through the GFP website. Final response rates were 56% for regular East River Deer, 43% for Landowner Own Land, and 68% for Special Buck.

Respondents reported hunting an average of 4.19 days per hunter for the regular season, 4.92 days for Landowner Own Land and 5.62 days for Special Buck, resulting in a projected total of 149,531 recreation days for the entire East River season. Regular East River season hunters reported harvesting approximately 87% of their deer from November 21 – December 6, and 13% from December 12-20.

The East River projected deer harvest was 14,395 for the regular season, 4,596 for Landowner Own Land, and 274 for the Special Buck season. Success rates were 49% for the regular season, 40% for Landowner Own Land, and 55% for Special Buck.

The mean satisfaction score for those responding to the regular East River survey was 4.90, for the Landowner Own Land survey was 5.07, and for the Special Buck survey was 5.11 (1 = “very dissatisfied” and 7 = “very satisfied”).

Summary comparison of the 2012-2020 East River Deer seasons (including Special Buck and Landowner)

YEAR	Licenses Sold				Harvest				Total Harvest	Success	Avg Days	Avg Satis
	Resident		Nonres		Bucks		Does					
	Lics	Tags	Lics	Tags	WT	Mule	WT	Mule				
2012	37,865	58,693	1,419	2,813	13,522	383	14,153	337	28,394	46%	4.23	4.64
2013	37,137	56,030	1,366	2,715	10,733	278	10,592	256	21,858	37%	4.44	4.19
2014	31,037	37,835	912	1,326	12,213	376	6,673	86	19,347	49%	4.10	4.80
2015	32,287	40,420	836	1,276	13,060	369	7,331	104	20,866	50%	4.15	4.96
2016	31,048	44,311	759	1,595	10,659	359	7,972	117	19,107	42%	4.16	4.70
2017	31,501	39,556	830	1,313	11,636	312	6,446	96	18,489	45%	4.40	4.86
2018	31,791	39,926	718	1,143	11,329	348	6,616	95	18,388	45%	4.36	4.86
2019	33,353	39,891	526	538	10,015	280	6,142	66	16,503	41%	4.15	4.77
2020	33,816	40,884	437	451	11,801	339	7,066	59	19,265	47%	4.56	5.30

2020 East River Deer Antlerless Harvest by Date

	Total	Nov 21 - Dec 6	Dec 12-20
Reports	3,490	3,033	457
Percent of total		87%	13%
Projected	6,030	5,241	790

2020 East River Deer Harvest Projections

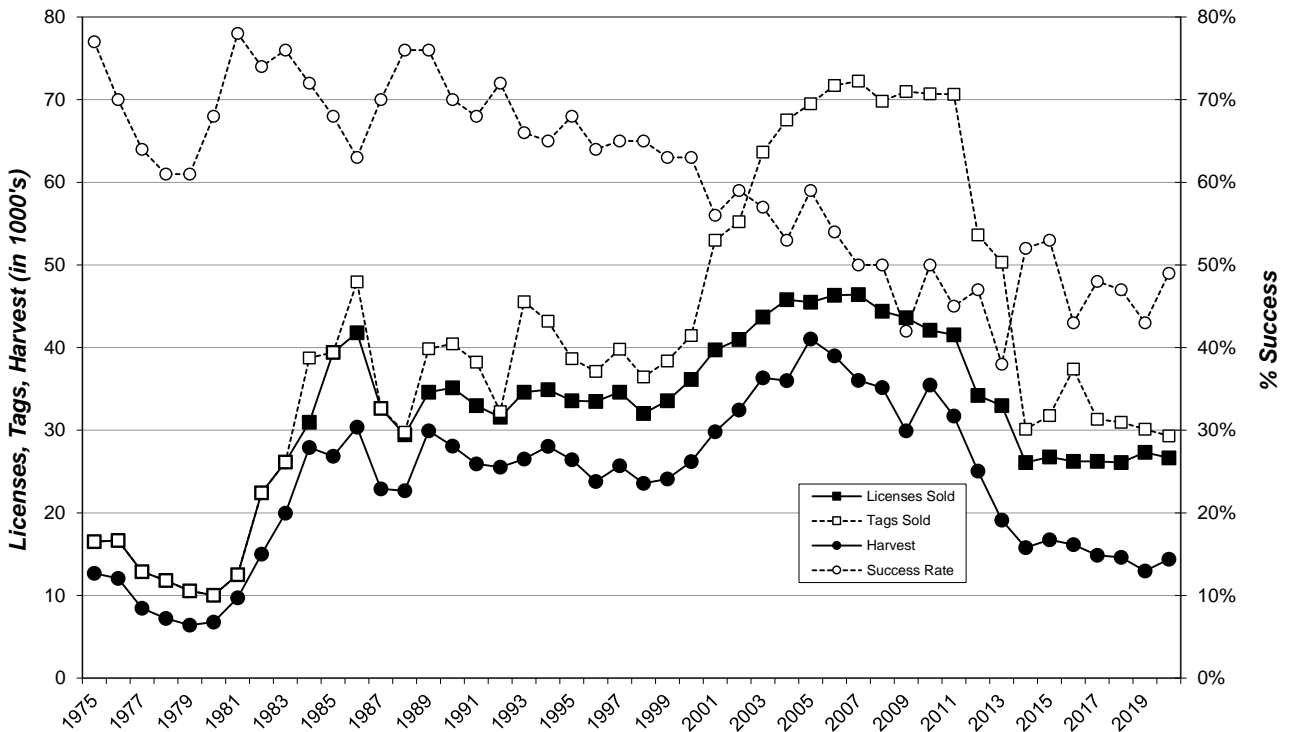
Unit/Type	Licenses										Harvest Projections				Harvest Projections				Total	
	Resident					Nonresident					Whitetail				Mule Deer				Harvest	CI (95%)
	Appl. 1st	Avail.	Sold	Avail.	Sold	Tags sold	Response Rate	Success 1st tag	2nd tag	Hunter Success	Bucks Adult	Fawn	Does Adult	Fawn	Bucks Adult	Fawn	Does Adult	Fawn		
	Choice *																			
01A-01	701	450	450	leftovers	0	450	60%	44%		44%	152	5	35	3	0	0	0	0	196	+/-17
01A-13	70	200	201	leftovers	0	201	61%	39%		39%	0	3	71	5	0	0	0	0	79	+/-11
03A-01	1,535	1,000	1,005	leftovers	1	1,006	57%	48%		48%	414	5	56	3	0	0	0	0	479	+/-27
03A-13	57	1,000	996	leftovers	1	997	53%	43%		47%	0	51	381	32	0	0	0	0	465	+/-32
04A-11	874	500	502	leftovers	0	502	52%	52%		52%	223	4	31	4	0	0	0	0	262	+/-21
04A-13	32	200	200	leftovers	0	200	48%	64%		64%	0	4	93	29	0	0	0	0	126	+/-14
05A-01	547	250	250	leftovers	0	250	59%	63%		63%	131	3	20	2	0	0	0	0	156	+/-13
05A-13	25	100	100	leftovers	0	100	59%	56%		56%	0	5	47	3	0	0	0	0	56	+/-8
06A-01	731	450	455	leftovers	0	455	67%	55%		55%	198	1	49	0	0	0	0	0	249	+/-15
06A-13	91	100	100	leftovers	0	100	61%	56%		56%	0	7	46	3	0	0	0	0	56	+/-8
07A-01	517	300	302	leftovers	0	302	65%	55%		55%	131	2	29	3	0	0	0	0	164	+/-12
07B-13	26	75	75	leftovers	0	75	67%	50%		50%	0	3	30	5	0	0	0	0	38	+/-6
08A-11	304	200	201	leftovers	0	201	60%	42%		42%	79	0	5	0	0	0	0	0	84	+/-11
10A-11	495	300	279	leftovers	0	279	41%	51%		51%	109	5	29	0	0	0	0	0	143	+/-20
10A-13	25	200	193	leftovers	0	193	51%	53%		53%	0	6	82	14	0	0	0	0	101	+/-13
12A-01	382	250	250	leftovers	0	250	64%	58%		58%	113	2	28	2	2	0	0	0	146	+/-11
12B-13	29	50	50	leftovers	0	50	50%	60%		60%	0	6	24	0	0	0	0	0	30	+/-7
13A-01	266	100	99	leftovers	2	101	66%	48%		48%	21	3	3	0	18	0	3	0	48	+/-7
13A-18	339	800	798	leftovers	1	1,598	51%	40%	11%	40%	201	16	164	30	0	0	0	0	411	+/-48
13L-01	79	20	20	leftovers	0	20	75%	60%		60%	7	0	1	0	4	0	0	0	12	+/-2
13P-13	5	100	102	leftovers	3	105	50%	34%		37%	0	2	34	4	0	0	0	0	40	+/-11
14A-01	70	100	97	leftovers	1	98	51%	50%		50%	25	2	10	0	12	0	0	0	49	+/-10
14A-18	65	250	249	leftovers	0	498	56%	42%	12%	42%	62	5	45	12	0	0	0	0	125	+/-25
16A-01	72	30	32	leftovers	0	32	48%	60%		60%	4	0	0	0	14	0	0	0	19	+/-6
16A-11	353	400	400	leftovers	0	400	53%	54%		54%	180	6	28	2	0	0	0	0	216	+/-18
16A-13	2	150	123	leftovers	32	155	50%	52%		56%	0	8	63	2	0	0	0	0	73	+/-15
17A-01	426	100	103	leftovers	0	103	54%	50%		50%	33	2	6	0	9	0	0	2	51	+/-9
17A-11	430	200	201	leftovers	0	201	63%	45%		45%	63	6	19	2	0	0	0	0	90	+/-11
17A-13	13	100	101	leftovers	0	101	59%	35%		35%	0	2	30	3	0	0	0	0	35	+/-8
18A-01	802	600	598	leftovers	0	598	58%	58%		58%	290	5	43	3	2	0	0	0	344	+/-20
18A-13	28	100	100	leftovers	0	100	50%	58%		58%	0	2	56	0	0	0	0	0	58	+/-10
19A-01	317	200	200	leftovers	0	200	60%	58%		58%	76	3	35	3	0	0	0	0	117	+/-11
19A-13	19	100	100	leftovers	0	100	64%	48%		48%	0	6	41	2	0	0	0	0	48	+/-7
22A-01	927	600	601	leftovers	0	601	57%	60%		60%	321	12	28	0	0	0	0	0	361	+/-20
22A-13	28	100	100	leftovers	0	100	62%	52%		52%	0	0	42	10	0	0	0	0	52	+/-8
23A-01	588	400	400	leftovers	1	401	60%	59%		59%	201	5	23	7	0	0	0	0	235	+/-16
23A-13	17	100	100	leftovers	0	100	60%	57%		57%	0	3	52	2	0	0	0	0	57	+/-8
25A-11	202	250	249	leftovers	0	249	51%	36%		36%	73	0	16	2	0	0	0	0	90	+/-15
25A-13	10	100	100	leftovers	0	100	34%	35%		35%	0	3	26	6	0	0	0	0	35	+/-13
26A-01	716	700	699	leftovers	0	699	56%	58%		58%	359	2	36	7	0	0	4	0	407	+/-23
26A-13	28	600	499	leftovers	97	596	48%	44%		51%	0	27	260	29	0	0	0	0	316	+/-28
28A-01	620	600	574	leftovers	1	575	51%	54%		54%	258	2	41	8	2	0	2	0	313	+/-23
28A-13	16	600	435	leftovers	85	520	46%	54%		64%	0	43	245	54	0	0	0	0	342	+/-28
29A-01	605	300	300	leftovers	0	300	64%	61%		61%	150	6	25	2	0	0	0	0	182	+/-12
32A-01	648	600	602	leftovers	0	602	58%	54%		54%	266	5	49	2	2	0	0	0	323	+/-21
32A-13	9	100	100	leftovers	0	100	61%	49%		49%	0	8	39	2	0	0	0	0	49	+/-8
33A-01	100	20	15	leftovers	0	15	60%	56%		56%	8	0	0	0	0	0	0	0	8	+/-3
33A-18	635	450	413	leftovers	0	826	59%	56%	19%	56%	146	17	134	12	0	0	0	0	309	+/-32
33A-19	13	100	90	leftovers	0	180	53%	58%	33%	58%	0	6	60	17	0	0	0	0	82	+/-17
33P-13	4	300	220	leftovers	23	243	46%	41%		43%	0	7	87	13	0	0	0	0	106	+/-17
34A-11	317	200	202	leftovers	0	202	56%	56%		56%	104	0	7	2	0	0	0	0	113	+/-12
36A-01	319	175	167	leftovers	0	167	68%	64%		64%	34	0	6	1	56	3	7	0	107	+/-8
36A-11	235	250	239	leftovers	0	239	62%	48%		48%	104	3	7	2	0	0	0	0	115	+/-12
36P-13	1	100	92	leftovers	0	92	55%	37%		40%	0	5	29	5	0	0	0	0	40	+/-9
37A-11	340	150	150	leftovers	0	150	64%	58%		58%	84	0	3	0	0	0	0	0	87	+/-9
38A-01	43	20	19	leftovers	0	19	47%	56%		56%	8	0	0	0	2	0	0	0	11	+/-4
38A-18	254	500	447	leftovers	0	894	51%	42%	14%	42%	154	14	71	12	0	0	0	0	250	+/-37
38A-19	3	100	78	leftovers	13	182	49%	29%	16%	29%	0	8	20	14	0	0	0	0	43	+/-17
38P-13	0	100	6	leftovers	2	8	38%	33%		33%	0	0	3	0	0	0	0	0	3	+/-3
40A-11	225	250	237	leftovers	0	237	55%	55%		55%	106	0	20	4	0	0	0	0	129	+/-14
40A-13	12	250	195	leftovers	32	227	49%	40%		44%	0	10	90	8	0	0	0	0	108	+/-17
40A-18	168	100	96	leftovers	0	192	47%	58%		58%	38	6	30	4	0	0	0	0	79	+/-20
42A-01	780	500	501	leftovers	0	501	56%	58%		59%	266	0	27	0	0	0	0	0	293	+/-19
42A-13	54	100	100	leftovers	0	100	56%	54%		54%	0	11	43	0	0	0	0	0	54	+/-9
43A-01	621	300	301	leftovers	0	301	66%	58%		59%	155	3	18	2	0	0	0	0	177	+/-12
43A-13	36	100	100	leftovers	0	100	51%	45%		45%	0	10	31	4	0	0	0	0	45	+/-10
44A-01	446	200	200	leftovers	0	200	65%	47%		47%	79	2	14	0	0	0	0	0	95	+/-10
44A-13	31	100	100	leftovers	0	100	57%	40%		40%	0	2	37	2	0	0	0	0	40	+/-8
46A-01	612	350	352	leftovers	0	352	58%	59%		59%	164	5	31	7	0	0	0	0	207	+/-15
46A-13	48	200	200	leftovers	0	200	63%	46%		46%	0	8	76	8	0	0	0	0	92	+/-11
47A-01	731	500	499	leftovers	1	500	53%	62%		63%	259	4	34	6	9	0	0	0	312	+/-20
47A-13	23	500	456	leftovers	47	503	57%	56%		61%	0	34	235	44	0	0	0	0	313	+/-21
48A-01	692	500	502	leftovers	0	502	59%	60%		60%	273	5	25	2	0	0	0	0	305	+/-18
48A-13	17	100	100	leftovers	0	100	59%	53%		53%	0	2	47	3	0	0	0	0	53	+/-8
51A-01	567	400	401	leftovers	0	401	55%	53%		53%	181	4	25	2	0	0	0	0	212	+/-18
51A-13	48	350	350	leftovers	0	350	50%	45%		45%	0	20	131	8	0	0	0	0	159	+/-18
52A-01	478	350	350	leftovers	0	350	58%	52%		52%	142	2	33	7	0	0	0	0	184	+/-16
52A-13	35	200	199	leftovers	0	199	53%	46%		46%	0	6	81	4	0	0	0	0	91	+/-13
54A-01	193	150	141	leftovers	0	141	57%	56%		56%	44	0	2	0						

(continued from previous page)

Unit/Type	Licenses										Harvest Projections				Harvest Projections				Total Deer						
	Resident					Nonresident					Whitetail				Mule Deer										
	Appl.	1st Choice *	Avail.	Sold	leftovers	Appl.	1st Choice *	Avail.	Sold	leftovers	Tags sold	Response Rate	Success 1st tag	Success 2nd tag	Hunter Success	Bucks Adult	Does Fawn	Bucks Adult	Does Fawn	Bucks Adult	Does Fawn	Bucks Adult	Does Fawn	Harvest	CI (95%)
	Choice *	Avail.	Sold	leftovers	Avail.	Sold	Rate	1st tag	2nd tag	Success	Adult	Fawn	Adult	Fawn	Adult	Fawn	Adult	Fawn	Adult	Fawn	Adult	Fawn	Harvest	CI (95%)	
57A-01	912	900	903	leftovers	0	903	54%	51%		373	7	72	7	2	0	0	0	0	462	+/-27					
57A-13	26	400	384	leftovers	15	399	46%	43%		0	7	148	9	0	0	0	0	163	+/-22						
59A-01	432	100	92	leftovers	0	92	70%	58%		13	0	1	0	37	0	0	1	53	+/-6						
59A-11	183	250	241	leftovers	0	241	57%	53%		117	0	9	2	0	0	0	0	127	+/-13						
59B-01	37	20	20	leftovers	0	20	65%	77%		14	0	0	0	2	0	0	0	15	+/-3						
59B-11	189	300	277	leftovers	0	277	55%	45%		102	4	18	0	0	0	0	0	124	+/-15						
59B-13	2	50	46	leftovers	0	46	62%	18%		0	2	5	2	0	0	0	0	8	+/-4						
61A-01	333	100	100	leftovers	0	100	57%	53%		53	0	0	0	0	0	0	0	53	+/-9						
62A-01	451	300	300	leftovers	0	300	58%	56%		143	3	21	2	0	0	0	0	169	+/-14						
62A-13	37	100	100	leftovers	0	100	56%	46%		0	7	34	5	0	0	0	0	46	+/-9						
63A-01	175	50	53	leftovers	0	53	51%	59%		14	0	0	0	18	0	0	0	31	+/-7						
63A-11	370	400	400	leftovers	1	401	57%	55%		186	7	24	0	0	0	0	0	218	+/-17						
63A-13	9	300	258	leftovers	40	298	50%	41%		0	20	114	16	0	0	0	0	149	+/-18						
Totals	26,962	27,310	26,225	leftovers	437	29,299	55.9%							53%	8,144	599	4,828	577	220	3	19	3	14,395	+/-1,425	

* Number of 1st drawing applicants with that season as 1st choice.

East River Deer Regular Season 1975-2020 (does not include Special Buck or Landowner Own Land)



2020 East River Landowner Own Land Harvest Projections

Last Revised:

09-Apr-21

Unit	Harvest Projections																			Total Deer Harvest	Mean Satisfactn Rating	Average Days Hunted
	Resident Licenses			Nonresident Licenses			Response			Hunter			Whitetail		Mule Deer							
	Avail.		Tags Sold	Avail.		Response Rate	Success		Tag Success	Bucks		Does		Bucks		Does						
	Avail.	Sold	Tags Sold	Avail.	Sold	Rate	Success	Success	Adult	Fawn	Adult	Fawn	Adult	Fawn	Adult	Fawn						
ER1-01	Unltd	2,647	2,647	0	0	45%	37%	37%	831	4	106	2	40	2	0	0	985	-	-			
ER1-08	Unltd	4,445	8,890	0	0	41%	60%	41%	1,838	134	1,405	141	44	12	27	10	3,611	-	-			
Totals		7,092	11,537	0	0	42.7%	51%	40%	2,669	138	1,512	143	84	14	27	10	4,596	5.07	4.92			

2020 East River LOL Harvest Distribution by Management Unit

Last Revised:

04-May-21

Unit	Projected Harvest										Estimate	%
	Whitetail				Mule Deer				Total			
	Bucks		Does		Bucks		Does		Estimate	%		
Adult	Fawn	Adult	Fawn	Adult	Fawn	Adult	Fawn	Adult	Fawn			
01A (Minnehaha)	83	11	50	3	0	0	0	0	0	146	3.2%	
03A (Brown)	93	3	66	11	0	0	0	0	0	173	3.8%	
04A (Beadle)	158	8	103	3	0	0	0	0	0	272	5.9%	
05A (Codington)	106	5	61	11	0	0	0	0	0	183	4.0%	
06A (Brookings)	96	11	69	8	0	0	0	0	0	183	4.0%	
07A (Yankton)	65	3	50	3	0	0	0	0	0	120	2.6%	
08A (Davison)	54	0	24	3	0	0	0	0	2	83	1.8%	
10A (Aurora)	47	3	26	5	0	0	0	0	2	83	1.8%	
12A (Bon Homme)	44	0	26	0	0	0	0	0	0	70	1.5%	
13A (Brule)	34	0	26	5	12	0	0	0	0	77	1.7%	
14A (Buffalo)	13	0	8	3	2	0	3	0	0	29	0.6%	
16A (Campbell)	31	3	8	3	12	0	3	0	0	59	1.3%	
17A (Charles Mix)	93	5	37	3	10	3	6	2	159	3.5%		
18A (Clark)	116	5	34	3	2	0	0	0	0	161	3.5%	
19A (Clay)	36	3	24	0	0	0	0	0	0	63	1.4%	
22A (Day)	83	0	63	0	2	0	0	0	0	148	3.2%	
23A (Deuel)	41	8	16	0	0	0	0	0	0	65	1.4%	
25A (Douglas)	31	0	11	0	0	0	0	0	0	42	0.9%	
26A (Edmunds)	54	3	32	5	2	0	0	0	0	96	2.1%	
28A (Faulk)	23	0	40	0	0	0	0	0	0	63	1.4%	
29A (Grant)	90	5	58	5	0	3	0	0	0	162	3.5%	
32A (Hamlin)	57	3	24	5	0	0	0	0	0	89	1.9%	
33A (Hand)	78	0	66	5	12	0	0	0	0	161	3.5%	
34A (Hanson)	72	3	29	5	0	0	0	0	0	110	2.4%	
36A (Hughes)	16	0	11	0	10	0	3	0	0	39	0.8%	
37A (Hutchinson)	109	5	53	0	0	0	0	0	0	167	3.6%	
38A (Hyde)	8	0	5	5	0	0	0	0	0	18	0.4%	
40A (Jerauld)	34	3	18	3	0	0	0	0	0	57	1.3%	
42A (Kingsbury)	72	3	18	3	0	0	0	0	0	96	2.1%	
43A (Lake)	83	5	48	3	0	0	0	0	0	138	3.0%	
44A (Lincoln)	36	0	18	3	2	0	0	0	0	60	1.3%	
46A (McCook)	65	5	32	0	0	0	0	0	0	102	2.2%	
47A (McPherson)	31	0	26	0	0	0	0	0	0	57	1.2%	
48A (Marshall)	26	0	11	0	0	0	0	0	0	36	0.8%	
51A (Miner)	57	5	26	3	0	0	0	0	0	91	2.0%	
52A (Moody)	36	5	24	0	0	0	0	0	0	65	1.4%	
54A (Potter)	13	0	13	0	2	0	3	0	0	31	0.7%	
55A (Roberts)	150	5	87	8	0	0	0	0	0	251	5.5%	
56A (Sanborn)	80	3	48	0	0	3	0	0	0	133	2.9%	
57A (Spink)	83	3	45	16	0	3	0	0	0	149	3.3%	
59A (W Sully)	13	0	8	0	5	0	3	0	0	29	0.6%	
59B (E Sully)	23	3	5	0	2	0	0	0	0	34	0.7%	
61A (Turner)	47	0	16	8	0	0	0	0	0	70	1.5%	
62A (Union)	49	3	24	0	0	0	0	0	0	76	1.6%	
63A (Walworth)	44	8	24	3	7	3	6	2	97	2.1%		
TOTALS	2,669	138	1,512	143	84	14	27	10	4,596			

Any by management unit projected harvest values will differ from statewide projected harvest values due to incorrect sampling proportions within units.

Use these figures for approximations only! All unknown harvest locations were assigned the license holder's county of residence, if possible.

2020 East River Special Buck Harvest Projections

Last Revised:
09-Apr-21

Unit/Type	Appl. 1st Choice *	Resident Licenses		Response Rate	Tag Success	Harvest Projections								Total Deer Harvest	Mean Satisfactn Rating	Average Days Hunted		
		Whitetail				Mule Deer		Bucks		Does		Bucks					Does	
		Avail.	Sold			Adult	Fawn	Adult	Fawn	Adult	Fawn	Adult	Fawn				Adult	Fawn
ER-01	1,330	500	499	68%	55%	247	3	6	0	18	0	0	0	274	5.11	5.62		

2020 East River Special Buck Harvest Distribution

Last Revised:
04-May-21

Unit	Projected Harvest										Estimate	%
	Whitetail				Mule Deer				Total			
	Bucks		Does		Bucks		Does		Adult	Fawn		
Adult	Fawn	Adult	Fawn	Adult	Fawn	Adult	Fawn	Adult	Fawn	Estimate	%	
01A (Minnehaha)	19	0	0	0	0	0	0	0	0	19	7.0%	
03A (Brown)	16	0	0	0	0	0	0	0	0	16	5.8%	
04A (Beadle)	2	1	0	0	2	0	0	0	0	5	1.7%	
05A (Codington)	6	0	0	0	0	0	0	0	0	6	2.3%	
06A (Brookings)	19	0	1	0	0	0	0	0	0	21	7.5%	
07A (Yankton)	6	0	1	0	0	0	0	0	0	8	2.9%	
08A (Davison)	3	0	0	0	0	0	0	0	0	3	1.2%	
10A (Aurora)	5	0	0	0	0	0	0	0	0	5	1.7%	
12A (Bon Homme)	2	0	0	0	0	0	0	0	0	2	0.6%	
13A (Brule)	3	0	0	0	2	0	0	0	0	5	1.8%	
14A (Buffalo)	0	0	0	0	0	0	0	0	0	0	0.0%	
16A (Campbell)	5	0	0	0	5	0	0	0	0	10	3.5%	
17A (Charles Mix)	5	0	0	0	3	0	0	0	0	8	2.9%	
18A (Clark)	13	0	0	0	0	0	0	0	0	13	4.7%	
19A (Clay)	2	0	0	0	0	0	0	0	0	2	0.6%	
22A (Day)	11	0	0	0	0	0	0	0	0	11	4.1%	
23A (Deuel)	2	0	1	0	0	0	0	0	0	3	1.1%	
25A (Douglas)	0	0	0	0	0	0	0	0	0	0	0.0%	
26A (Edmunds)	6	1	0	0	0	0	0	0	0	8	2.9%	
28A (Faulk)	11	0	0	0	0	0	0	0	0	11	4.1%	
29A (Grant)	3	0	0	0	0	0	0	0	0	3	1.2%	
32A (Hamlin)	0	0	0	0	0	0	0	0	0	0	0.0%	
33A (Hand)	5	0	1	0	0	0	0	0	0	6	2.3%	
34A (Hanson)	0	0	0	0	0	0	0	0	0	0	0.0%	
36A (Hughes)	5	0	0	0	0	0	0	0	0	5	1.7%	
37A (Hutchinson)	8	0	0	0	0	0	0	0	0	8	2.9%	
38A (Hyde)	0	0	0	0	0	0	0	0	0	0	0.0%	
40A (Jerauld)	6	0	0	0	0	0	0	0	0	6	2.3%	
42A (Kingsbury)	10	0	0	0	0	0	0	0	0	10	3.5%	
43A (Lake)	6	0	0	0	0	0	0	0	0	6	2.3%	
44A (Lincoln)	10	0	0	0	0	0	0	0	0	10	3.5%	
46A (McCook)	3	0	0	0	0	0	0	0	0	3	1.2%	
47A (McPherson)	10	0	0	0	0	0	0	0	0	10	3.5%	
48A (Marshall)	5	0	0	0	0	0	0	0	0	5	1.7%	
51A (Miner)	5	0	0	0	0	0	0	0	0	5	1.7%	
52A (Moody)	5	0	0	0	0	0	0	0	0	5	1.7%	
54A (Potter)	3	0	0	0	2	0	0	0	0	5	1.8%	
55A (Roberts)	5	0	0	0	0	0	0	0	0	5	1.7%	
56A (Sanborn)	3	0	0	0	0	0	0	0	0	3	1.2%	
57A (Spink)	0	0	0	0	0	0	0	0	0	0	0.0%	
59A (W Sully)	5	0	0	0	3	0	0	0	0	8	2.9%	
59B (E Sully)	2	0	0	0	0	0	0	0	0	2	0.6%	
61A (Turner)	2	0	0	0	0	0	0	0	0	2	0.6%	
62A (Union)	11	0	0	0	0	0	0	0	0	11	4.1%	
63A (Walworth)	2	0	0	0	2	0	0	0	0	3	1.2%	
TOTALS	247	3	6	0	18	0	0	0	0	274		

Any by management unit projected harvest values will differ from statewide projected harvest values due to incorrect sampling proportions within units.

Use these figures for approximations only!