

# **DUCKS (all species)**

The 2020 duck season was open 26 September 2020 - 14 January 2021 statewide, although some units/zones may have opened later and/or closed sooner. A special Youth Waterfowl season was open 12-13 September for youth that had not reached age 18 by the first day of the season. The daily bag was 6 ducks, which could include no more than 5 mallards (up to 2 hens), 1 scaup, 2 redheads, 3 wood ducks, 2 canvasbacks, or 1 pintail. Hunters could also harvest 2 bonus blue-winged teal daily during the first 16 days of the season. The daily limit on mergansers was 5, which could include no more than 2 hooded mergansers, and the daily limit on coots was 15. The possession limit was three times the daily bag for each species. To hunt ducks, residents were required to hold small game, 1-day small game, adult, senior or junior combination, or youth small game licenses plus a migratory bird certification. Nonresidents were required to obtain a nonresident waterfowl license. All hunters age 16 and over were also required to obtain a federal waterfowl stamp.

In 2020, there were an estimated 16,559 hunters who hunted at least one day for ducks (12,285 residents, 4,274 nonresidents). From the survey responses, there were a projected total of 241,684 ducks harvested (190,515 by residents, 51,169 by nonresidents). Nonresidents reported harvesting 10% of their ducks within 20 miles of the Missouri River. Average bag for residents was 15.51, and for nonresidents ranged from 6.90 in unit 00X to 16.18 in unit 00A.

The five counties with the highest reported resident hunter numbers were Brown, Day, Codington, Brookings, and Kingsbury. The five counties with the highest reported unit 00B nonresident hunter numbers were Day, Brown, Clark, Marshall, and Roberts.

When asked their satisfaction on the season, (1 being most dissatisfied, 7 being most satisfied), duck hunters reported an average satisfaction rating of 5.15 for residents and 5.38 for nonresidents.

The average days hunted by all hunters (7.75 residents, 4.36 nonresidents) projected to a total of 113,856 recreation days for the season.

## Comparison of the 2015 - 2020 duck season statistics

Year	Resident Hunters					Nonresident Hunters				
	Number Hunters	Harvest	Ave Day Hunted	Ave Bag	Satisfaction	Number Hunters	Harvest	Ave Day Hunted	Ave Bag	Satisfaction
2015	11,994	169,183	7.22	14.11	4.87	3,937	44,562	4.54	11.32	4.90
2016	10,533	143,749	7.18	13.65	4.81	3,832	41,356	4.70	10.79	4.75
2017	10,557	143,976	6.90	13.64	5.05	4,159	45,344	4.31	10.90	5.14
2018	10,271	134,307	6.88	13.08	4.99	4,051	41,515	4.31	10.25	5.11
2019	11,295	176,885	7.30	15.66	5.17	4,423	52,225	4.47	11.81	5.38
2020	12,285	190,515	7.75	15.51	5.15	4,274	51,169	4.36	11.97	5.38

### **DUCK HUNTING SUMMARY FOR 2020**

Revised: 25 May 2021

	NONRESIDENT TOTALS BY UNIT									NR Totals	Resident Total
	00A	00B	11A	00V	00X	00Y	00Z	YW1	Totals		
No. Hunters Reporting Duck Days	103	1,632	12	166	52	197	98			2,260	1,770
Total Reported Duck Hunted Days	665	7,724	60	535	157	562	269			9,972	13,719
<b>Average Days Hunted Ducks</b>	<b>6.46</b>	<b>4.73</b>	<b>5.00</b>	<b>3.22</b>	<b>3.02</b>	<b>2.85</b>	<b>2.74</b>			<b>4.36</b>	<b>7.75</b>
Total Reported Ducks Bagged	1,667	21,136	102	1,541	359	1,727	836			27,368	27,448
<b>Average Duck Bag for Season</b>	<b>16.18</b>	<b>12.95</b>	<b>8.50</b>	<b>9.28</b>	<b>6.90</b>	<b>8.77</b>	<b>8.53</b>			<b>11.97</b>	<b>15.51</b>
Projected Days Duck Hunting	1,250	14,008	98	1,196	413	1,106	563			18,634	95,223
Projected No. Duck Hunters	194	2,960	20	371	137	388	205			4,274	12,285
Projected Duck Bag	3,133	38,332	166	3,445	945	3,400	1,749			51,169	190,515
Duck Harvest Reported Within 20 Miles of Missouri River	1,453	803	0	91	142	16	91			2,596	N/A
Projected Ducks Bagged w/in 20 miles of Missouri River	2,731	1,456	0	203	374	31	190			4,986	N/A
<b>TOTAL DUCK HARVEST = 241,684</b>											
<b>Duck Hunter Mean Satisfaction Score *1*</b>	5.03	5.39	4.58	5.37	5.37	5.55	5.30			5.38	5.15

\*1\* Based on scale of 1-7 with 1=very dissatisfied & 7=very satisfied

## Resident Duck Harvest Distribution by County 2020

COUNTY	HUNTER DISTRIBUTION				HARVEST DISTRIBUTION				
	# Reported	# Projected	% of Total	# Proj w/ Unk *	# Reported	# Projected	% of Total	# Proj w/ Unk *	Birds/Hunter **
Minnehaha	69	479	4.0	490	951	6,601	3.5	6,756	13.8
Pennington	28	194	1.6	199	365	2,533	1.4	2,593	13.0
Brown	107	743	6.2	759	1,673	11,612	6.2	11,885	15.6
Beadle	66	458	3.8	468	1,118	7,760	4.2	7,943	16.9
Codington	84	583	4.9	596	1,750	12,147	6.5	12,432	20.8
Brookings	104	722	6.0	738	1,837	12,751	6.9	13,051	17.7
Yankton	26	180	1.5	185	450	3,123	1.7	3,197	17.3
Davison	12	83	0.7	85	365	2,533	1.4	2,593	30.4
Lawrence	12	83	0.7	85	81	562	0.3	575	6.8
Aurora	33	229	1.9	234	749	5,199	2.8	5,321	22.7
Bennett	8	56	0.5	57	85	590	0.3	604	10.6
Bon Homme	22	153	1.3	156	418	2,901	1.6	2,970	19.0
Brule	29	201	1.7	206	379	2,631	1.4	2,693	13.1
Buffalo	3	21	0.2	21	2	14	0.0	14	0.7
Butte	17	118	1.0	121	291	2,020	1.1	2,067	17.1
Campbell	9	62	0.5	64	96	666	0.4	682	10.7
Charles Mix	45	312	2.6	319	595	4,130	2.2	4,227	13.2
Clark	86	597	5.0	610	1,425	9,891	5.3	10,124	16.6
Clay	10	69	0.6	71	78	541	0.3	554	7.8
Corson	1	7	0.1	7	1	7	0.0	7	1.0
Custer	2	14	0.1	14	7	49	0.0	50	3.5
Day	78	541	4.5	554	1,478	10,259	5.5	10,500	18.9
Deuel	30	208	1.7	213	458	3,179	1.7	3,254	15.3
Dewey	1	7	0.1	7	4	28	0.0	28	4.0
Douglas	6	42	0.3	43	85	590	0.3	604	14.2
Edmunds	26	180	1.5	185	322	2,235	1.2	2,288	12.4
Fall River	31	215	1.8	220	218	1,513	0.8	1,549	7.0
Faulk	14	97	0.8	99	162	1,124	0.6	1,151	11.6
Grant	28	194	1.6	199	289	2,006	1.1	2,053	10.3
Gregory	1	7	0.1	7	6	42	0.0	43	6.0
Haakon	0	0	0.0	0	0	0	0.0	0	0
Hamlin	47	326	2.7	334	1,069	7,420	4.0	7,594	22.7
Hand	17	118	1.0	121	211	1,465	0.8	1,499	12.4
Hanson	25	174	1.4	177	498	3,457	1.9	3,538	19.9
Harding	0	0	0.0	0	0	0	0.0	0	0
Hughes	28	194	1.6	199	534	3,706	2.0	3,794	19.1
Hutchinson	20	139	1.2	142	262	1,819	1.0	1,861	13.1
Hyde	8	56	0.5	57	174	1,208	0.6	1,236	21.8
Jackson	1	7	0.1	7	0	0	0.0	0	0.0
Jerauld	7	49	0.4	50	126	875	0.5	895	18.0
Jones	6	42	0.3	43	59	410	0.2	419	9.8
Kingsbury	98	680	5.7	696	1,624	11,272	6.1	11,537	16.6
Lake	86	597	5.0	610	1,270	8,815	4.7	9,022	14.8
Lincoln	17	118	1.0	121	148	1,027	0.6	1,051	8.7
Lyman	13	90	0.8	92	122	847	0.5	867	9.4
McCook	66	458	3.8	468	1,099	7,628	4.1	7,808	16.7
McPherson	23	160	1.3	163	204	1,416	0.8	1,449	8.9
Marshall	41	285	2.4	291	643	4,463	2.4	4,568	15.7
Meade	13	90	0.8	92	63	437	0.2	448	4.8
Mellette	0	0	0.0	0	0	0	0.0	0	0
Miner	34	236	2.0	241	497	3,450	1.9	3,531	14.6
Moody	16	111	0.9	114	150	1,041	0.6	1,066	9.4
Perkins	6	42	0.3	43	27	187	0.1	192	4.5
Potter	11	76	0.6	78	206	1,430	0.8	1,463	18.7
Roberts	37	257	2.1	263	382	2,651	1.4	2,714	10.3
Sanborn	25	174	1.4	177	360	2,499	1.3	2,558	14.4
Spink	26	180	1.5	185	240	1,666	0.9	1,705	9.2
Stanley	8	56	0.5	57	72	500	0.3	512	9.0
Sully	20	139	1.2	142	414	2,874	1.5	2,941	20.7
Tripp	3	21	0.2	21	35	243	0.1	249	11.7
Turner	25	174	1.4	177	301	2,089	1.1	2,138	12.0
Union	7	49	0.4	50	129	895	0.5	916	18.4
Walworth	8	56	0.5	57	155	1,076	0.6	1,101	19.4
Ziebach	1	7	0.1	7	5	35	0.0	36	5.0
Shannon	0	0	0.0	0	0	0	0.0	0	0
Todd	0	0	0.0	0	0	0	0.0	0	0
Unk/Unreported	39	271	-	-	631	4,380	-	-	16.2
<b>TOTALS:</b>	<b>1,770</b>	<b>12,285</b>	<b>100%</b>	<b>12,285</b>	<b>27,448</b>	<b>190,515</b>	<b>100%</b>	<b>190,515</b>	<b>15.51</b>

Last Revised: 25 May 2021

\* Includes unknown county projection values by assuming unknown county values are distributed the same as reported county values. Total values may be different due to rounding.

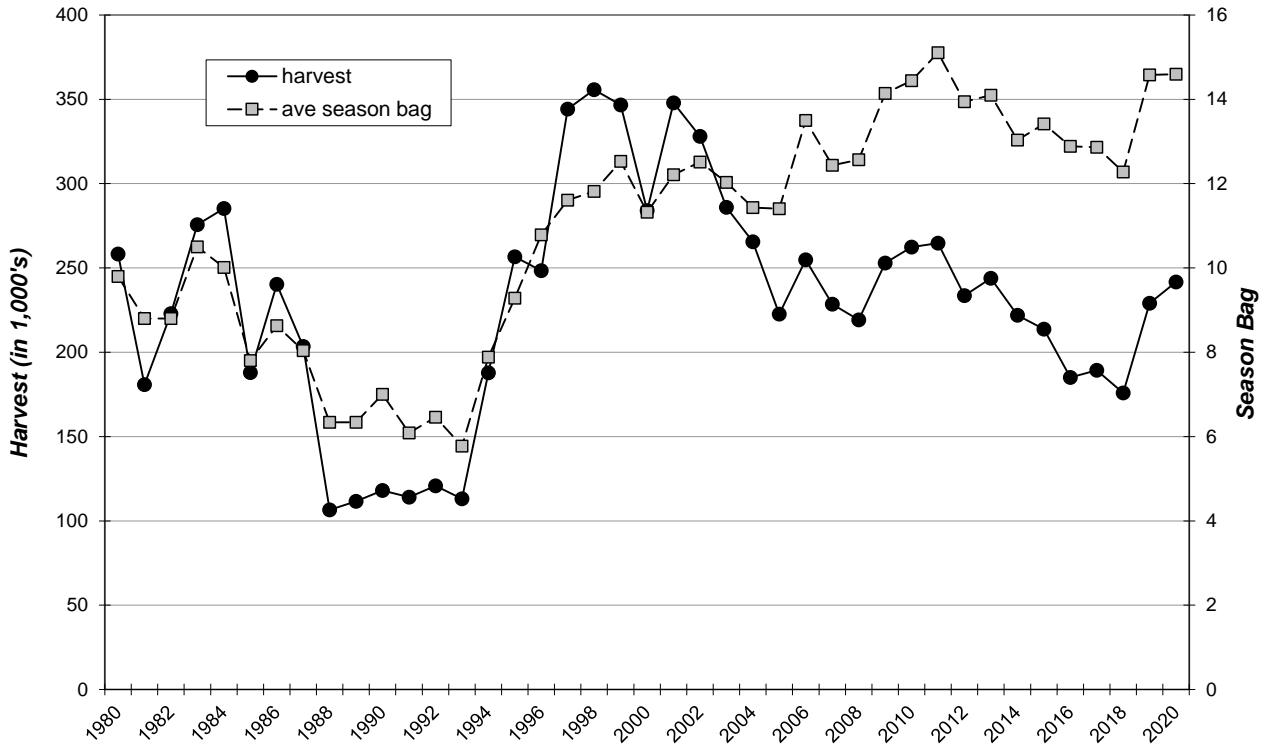
\*\* Calculation uses "# projected" values without correction for unknown/unreported county values.

**2020 Reported Nonresident Duck Hunting  
Distribution by County**

COUNTY	00A	00B	00V	00X	00Y	00Z	11A	00B PERCENT	00V PERCENT	00Y PERCENT
Minnehaha	0	4	0	0	0	0	0	0.3%	0.0%	0.0%
Pennington	0	1	0	0	0	5	0	0.1%	0.0%	0.0%
<b>Brown</b>	0	<b>151</b>	<b>69</b>	0	0	0	0	<b>9.6%</b>	<b>47.6%</b>	0.0%
Beadle	0	34	0	1	0	7	0	2.2%	0.0%	0.0%
Codington	0	48	1	0	14	0	0	3.1%	0.7%	7.8%
Brookings	0	34	0	0	0	2	0	2.2%	0.0%	0.0%
Yankton	20	4	0	0	0	0	0	0.3%	0.0%	0.0%
Davison	0	5	0	0	0	0	0	0.3%	0.0%	0.0%
Lawrence	0	2	0	0	0	6	0	0.1%	0.0%	0.0%
Aurora	0	29	0	0	0	7	0	1.8%	0.0%	0.0%
Bennett	0	3	1	0	0	0	11	0.2%	0.7%	0.0%
Bon Homme	47	2	0	0	0	0	0	0.1%	0.0%	0.0%
Brule	0	33	0	0	0	10	0	2.1%	0.0%	0.0%
Buffalo	0	0	0	0	0	0	0	0.0%	0.0%	0.0%
Butte	0	10	0	0	0	3	0	0.6%	0.0%	0.0%
Campbell	0	19	5	0	0	1	0	1.2%	3.4%	0.0%
Charles Mix	21	13	0	3	0	0	0	0.8%	0.0%	0.0%
<b>Clark</b>	0	<b>124</b>	0	0	<b>46</b>	0	0	<b>7.9%</b>	0.0%	<b>25.6%</b>
Clay	3	5	0	0	0	0	0	0.3%	0.0%	0.0%
Corson	0	0	0	0	0	0	0	0.0%	0.0%	0.0%
Custer	0	0	0	0	0	1	0	0.0%	0.0%	0.0%
<b>Day</b>	0	<b>341</b>	0	0	<b>53</b>	1	0	<b>21.7%</b>	0.0%	<b>29.4%</b>
Deuel	0	5	0	0	3	0	0	0.3%	0.0%	1.7%
Dewey	0	1	0	0	0	0	0	0.1%	0.0%	0.0%
Douglas	0	17	1	0	0	1	0	1.1%	0.7%	0.0%
Edmunds	0	65	<b>32</b>	0	0	0	0	4.1%	<b>22.1%</b>	0.0%
Fall River	0	1	0	0	0	0	0	0.1%	0.0%	0.0%
Faulk	0	31	14	0	0	0	0	2.0%	9.7%	0.0%
Grant	0	2	0	0	2	0	0	0.1%	0.0%	1.1%
Gregory	0	1	0	0	1	0	0	0.1%	0.0%	0.6%
Haakon	0	4	0	0	0	0	0	0.3%	0.0%	0.0%
Hamlin	0	23	1	0	5	3	0	1.5%	0.7%	2.8%
Hand	0	22	0	1	0	2	0	1.4%	0.0%	0.0%
Hanson	0	9	0	0	0	1	0	0.6%	0.0%	0.0%
Harding	0	1	0	0	0	0	0	0.1%	0.0%	0.0%
Hughes	0	7	0	5	0	0	0	0.4%	0.0%	0.0%
Hutchinson	0	13	0	0	0	0	0	0.8%	0.0%	0.0%
Hyde	0	5	0	1	0	1	0	0.3%	0.0%	0.0%
Jackson	0	0	0	0	0	1	0	0.0%	0.0%	0.0%
Jerauld	0	13	0	0	0	1	0	0.8%	0.0%	0.0%
Jones	0	4	0	1	0	1	0	0.3%	0.0%	0.0%
Kingsbury	0	51	0	0	0	9	0	3.2%	0.0%	0.0%
Lake	0	19	0	0	0	2	0	1.2%	0.0%	0.0%
Lincoln	0	0	0	0	0	0	0	0.0%	0.0%	0.0%
Lyman	0	7	1	9	0	0	0	0.4%	0.7%	0.0%
McCook	0	4	0	0	0	1	0	0.3%	0.0%	0.0%
McPherson	0	55	<b>17</b>	0	0	0	0	3.5%	<b>11.7%</b>	0.0%
<b>Marshall</b>	0	<b>79</b>	0	0	<b>18</b>	0	0	<b>5.0%</b>	0.0%	<b>10.0%</b>
Meade	0	2	0	0	0	2	0	0.1%	0.0%	0.0%
Mellette	0	2	0	0	0	0	0	0.1%	0.0%	0.0%
Miner	0	24	0	0	0	8	0	1.5%	0.0%	0.0%
Moody	0	2	0	0	0	3	0	0.1%	0.0%	0.0%
Perkins	0	7	0	0	0	0	0	0.4%	0.0%	0.0%
Potter	0	9	0	14	0	0	0	0.6%	0.0%	0.0%
<b>Roberts</b>	0	<b>124</b>	0	0	<b>25</b>	0	0	<b>7.9%</b>	0.0%	<b>13.9%</b>
Sanborn	0	22	0	0	0	4	0	1.4%	0.0%	0.0%
Spink	0	44	0	0	13	1	0	2.8%	0.0%	7.2%
Stanley	0	1	1	1	0	0	0	0.1%	0.7%	0.0%
Sully	0	8	0	13	0	0	0	0.5%	0.0%	0.0%
Tripp	0	1	0	1	0	0	0	0.1%	0.0%	0.0%
Turner	0	0	0	0	0	0	0	0.0%	0.0%	0.0%
Union	9	0	0	0	0	0	0	0.0%	0.0%	0.0%
Walworth	0	23	2	0	0	0	0	1.5%	1.4%	0.0%
Ziebach	0	0	0	0	0	0	0	0.0%	0.0%	0.0%
Oglala Lakota	0	0	0	0	0	0	0	0.0%	0.0%	0.0%
Todd	0	0	0	0	0	0	0	0.0%	0.0%	0.0%
<b>TOTALS:</b>	<b>100</b>	<b>1,570</b>	<b>145</b>	<b>50</b>	<b>180</b>	<b>84</b>	<b>11</b>	<b>100.0%</b>	<b>100.0%</b>	<b>100.0%</b>

Last updated: 25 May 2021

### STATEWIDE DUCK (all species) HARVEST, 1980-2020



### STATEWIDE DUCK SEASON PARTICIPATION, 1980-2020

