

DUCKS (all species)

The 2019 duck season was open 28 September 2019 - 16 January 2020 statewide, although some units/zones may have opened later and/or closed sooner. A special Youth Waterfowl season was open 21-22 September for youth that had not reached age 16 by the first day of the season. The daily bag was 6 ducks, which could include no more than 5 mallards (up to 2 hens), 3 scaup, 2 redheads, 3 wood ducks, 2 canvasbacks, or 1 pintail. Hunters could also harvest 2 bonus blue-winged teal daily during the first 16 days of the season. The daily limit on mergansers was 5, which could include no more than 2 hooded mergansers, and the daily limit on coots was 15. The possession limit was three times the daily bag for each species. To hunt ducks, residents were required to hold small game, 1-day small game, adult, senior or junior combination, or youth small game licenses plus a migratory bird certification. Nonresidents were required to obtain a nonresident waterfowl license. All hunters age 16 and over were also required to obtain a federal waterfowl stamp.

In 2019, there were an estimated 15,718 hunters who hunted at least one day for ducks (11,295 residents, 4,423 nonresidents). From the survey responses, there were a projected total of 229,110 ducks harvested (176,885 by residents, 52,225 by nonresidents). Nonresidents reported harvesting 11% of their ducks within 20 miles of the Missouri River. Average bag for residents was 15.66, and for nonresidents ranged from 3.88 in unit 11A to 16.25 in unit 00B.

The five counties with the highest reported resident hunter numbers were Brown, Day, Codington, Brookings, and Kingsbury. The five counties with the highest reported unit 00B nonresident hunter numbers were Day, Brown, Clark, Marshall, and Roberts.

When asked their satisfaction on the season, (1 being most dissatisfied, 7 being most satisfied), duck hunters reported an average satisfaction rating of 5.17 for residents and 5.38 for nonresidents.

The average days hunted by all hunters (7.30 residents, 4.47 nonresidents) projected to a total of 102,231 recreation days for the season.

Comparison of the 2014 - 2019 duck season statistics

Year	Resident Hunters					Nonresident Hunters				
	Number Hunters	Harvest	Ave Day Hunted	Ave Bag	Satisfaction	Number Hunters	Harvest	Ave Day Hunted	Ave Bag	Satisfaction
2014	13,471	179,674	7.12	13.34	4.95	3,565	42,307	4.44	11.87	5.16
2015	11,994	169,183	7.22	14.11	4.87	3,937	44,562	4.54	11.32	4.90
2016	10,533	143,749	7.18	13.65	4.81	3,832	41,356	4.70	10.79	4.75
2017	10,557	143,976	6.90	13.64	5.05	4,159	45,344	4.31	10.90	5.14
2018	10,271	134,307	6.88	13.08	4.99	4,051	41,515	4.31	10.25	5.11
2019	11,295	176,885	7.30	15.66	5.17	4,423	52,225	4.47	11.81	5.38

DUCK HUNTING SUMMARY FOR 2019

Revised: 15 June 2020

	NONRESIDENT TOTALS BY UNIT								NR Totals	Resident Total
	00A	00B	11A	00V	00X	00Y	00Z	YW1		
No. Hunters Reporting Duck Days	152	1,197	8	224	61	297	126		2,065	1,635
Total Reported Duck Hunted Days	1,115	5,800	38	685	167	835	325		8,965	11,938
Average Days Hunted Ducks	7.34	4.85	4.75	3.06	2.74	2.81	2.58		4.47	7.30
Total Reported Ducks Bagged	2,470	15,448	31	1,968	398	2,307	960		23,582	25,606
Average Duck Bag for Season	16.25	12.91	3.88	8.79	6.52	7.77	7.62		11.81	15.66
Projected Days Duck Hunting	1,529	15,057	63	1,137	361	1,146	470		19,764	82,467
Projected No. Duck Hunters	208	3,108	13	372	132	407	182		4,423	11,295
Projected Duck Bag	3,388	40,105	52	3,267	859	3,165	1,390		52,225	176,885
Duck Harvest Reported Within 20 Miles of Missouri River	2,131	746	20	174	219	21	94		3,405	
Projected Ducks Bagged w/in 20 miles of Missouri River	2,923	1,937	33	289	473	29	136		5,819	N/A
TOTAL DUCK HARVEST = 229,110										
Duck Hunter Mean Satisfaction Score *1*	5.30	5.46	4.13	5.38	5.10	5.18	5.34		5.38	5.17

1 Based on scale of 1-7 with 1=very dissatisfied & 7=very satisfied

Resident Duck Harvest Distribution by County 2019

COUNTY	HUNTER DISTRIBUTION				HARVEST DISTRIBUTION				Birds/Hunter **
	# Reported	# Projected	% of Total	# Proj w/ Unk *	# Reported	# Projected	% of Total	# Proj w/ Unk *	
Minnehaha	45	311	2.9	330	498	3,440	2.1	3,657	11.1
Pennington	13	90	0.8	95	86	594	0.4	632	6.6
Brown	105	725	6.8	770	1,888	13,042	7.8	13,864	18.0
Beadle	62	428	4.0	455	1,304	9,008	5.4	9,576	21.0
Codington	69	477	4.5	506	718	4,960	3.0	5,272	10.4
Brookings	86	594	5.6	631	1,664	11,495	6.9	12,219	19.3
Yankton	43	297	2.8	315	1,031	7,122	4.3	7,571	24.0
Davison	25	173	1.6	183	469	3,240	1.9	3,444	18.8
Lawrence	12	83	0.8	88	220	1,520	0.9	1,616	18.3
Aurora	28	193	1.8	205	635	4,387	2.6	4,663	22.7
Bennett	8	55	0.5	59	72	497	0.3	529	9.0
Bon Homme	27	187	1.8	198	607	4,193	2.5	4,457	22.5
Brule	32	221	2.1	235	425	2,936	1.8	3,121	13.3
Buffalo	2	14	0.1	15	8	55	0.0	59	4.0
Butte	17	117	1.1	125	79	546	0.3	580	4.6
Campbell	6	41	0.4	44	144	995	0.6	1,057	24.0
Charles Mix	27	187	1.8	198	266	1,838	1.1	1,953	9.9
Clark	68	470	4.4	499	1,078	7,447	4.5	7,916	15.9
Clay	14	97	0.9	103	235	1,623	1.0	1,726	16.8
Corson	0	0	0.0	0	0	0	0.0	0	0
Custer	1	7	0.1	7	3	21	0.0	22	3.0
Day	98	677	6.4	719	1,723	11,902	7.2	12,652	17.6
Deuel	22	152	1.4	161	391	2,701	1.6	2,871	17.8
Dewey	0	0	0.0	0	0	0	0.0	0	0
Douglas	5	35	0.3	37	110	760	0.5	808	22.0
Edmunds	30	207	1.9	220	451	3,115	1.9	3,312	15.0
Fall River	19	131	1.2	139	170	1,174	0.7	1,248	8.9
Faulk	9	62	0.6	66	162	1,119	0.7	1,190	18.0
Grant	18	124	1.2	132	179	1,237	0.7	1,314	9.9
Gregory	0	0	0.0	0	0	0	0.0	0	0
Haakon	1	7	0.1	7	4	28	0.0	29	4.0
Hamlin	49	338	3.2	359	1,052	7,267	4.4	7,725	21.5
Hand	11	76	0.7	81	178	1,230	0.7	1,307	16.2
Hanson	21	145	1.4	154	371	2,563	1.5	2,724	17.7
Harding	0	0	0.0	0	0	0	0.0	0	0
Hughes	26	180	1.7	191	313	2,162	1.3	2,298	12.0
Hutchinson	21	145	1.4	154	389	2,687	1.6	2,857	18.5
Hyde	6	41	0.4	44	73	504	0.3	536	12.2
Jackson	2	14	0.1	15	6	41	0.0	44	3.0
Jerauld	7	48	0.5	51	110	760	0.5	808	15.7
Jones	2	14	0.1	15	15	104	0.1	110	7.5
Kingsbury	81	560	5.3	594	1,408	9,726	5.8	10,339	17.4
Lake	60	414	3.9	440	957	6,611	4.0	7,028	16.0
Lincoln	13	90	0.8	95	87	601	0.4	639	6.7
Lyman	8	55	0.5	59	70	484	0.3	514	8.8
McCook	42	290	2.7	308	733	5,064	3.0	5,383	17.5
McPherson	14	97	0.9	103	149	1,029	0.6	1,094	10.6
Marshall	37	256	2.4	271	473	3,267	2.0	3,473	12.8
Meade	10	69	0.6	73	53	366	0.2	389	5.3
Mellette	1	7	0.1	7	3	21	0.0	22	3.0
Miner	32	221	2.1	235	330	2,280	1.4	2,423	10.3
Moody	12	83	0.8	88	109	753	0.5	800	9.1
Perkins	2	14	0.1	15	19	131	0.1	140	9.5
Potter	18	124	1.2	132	288	1,989	1.2	2,115	16.0
Roberts	43	297	2.8	315	500	3,454	2.1	3,672	11.6
Sanborn	16	111	1.0	117	286	1,976	1.2	2,100	17.9
Spink	28	193	1.8	205	313	2,162	1.3	2,298	11.2
Stanley	11	76	0.7	81	58	401	0.2	426	5.3
Sully	30	207	1.9	220	460	3,178	1.9	3,378	15.3
Tripp	2	14	0.1	15	5	35	0.0	37	2.5
Turner	20	138	1.3	147	435	3,005	1.8	3,194	21.8
Union	10	69	0.6	73	127	877	0.5	933	12.7
Walworth	11	76	0.7	81	91	629	0.4	668	8.3
Ziebach	0	0	0.0	0	0	0	0.0	0	0
Shannon	0	0	0.0	0	0	0	0.0	0	0
Todd	2	14	0.1	15	7	48	0.0	51	3.5
Unk/Unreported	95	656	-	-	1,518	10,486	-	-	16.0
TOTALS:	1,635	11,295	100%	11,295	25,606	176,885	100%	176,885	15.66

Last Revised: 14 June 2020

* Includes unknown county projection values by assuming unknown county values are distributed the same as reported county values. Total values may be different due to rounding.

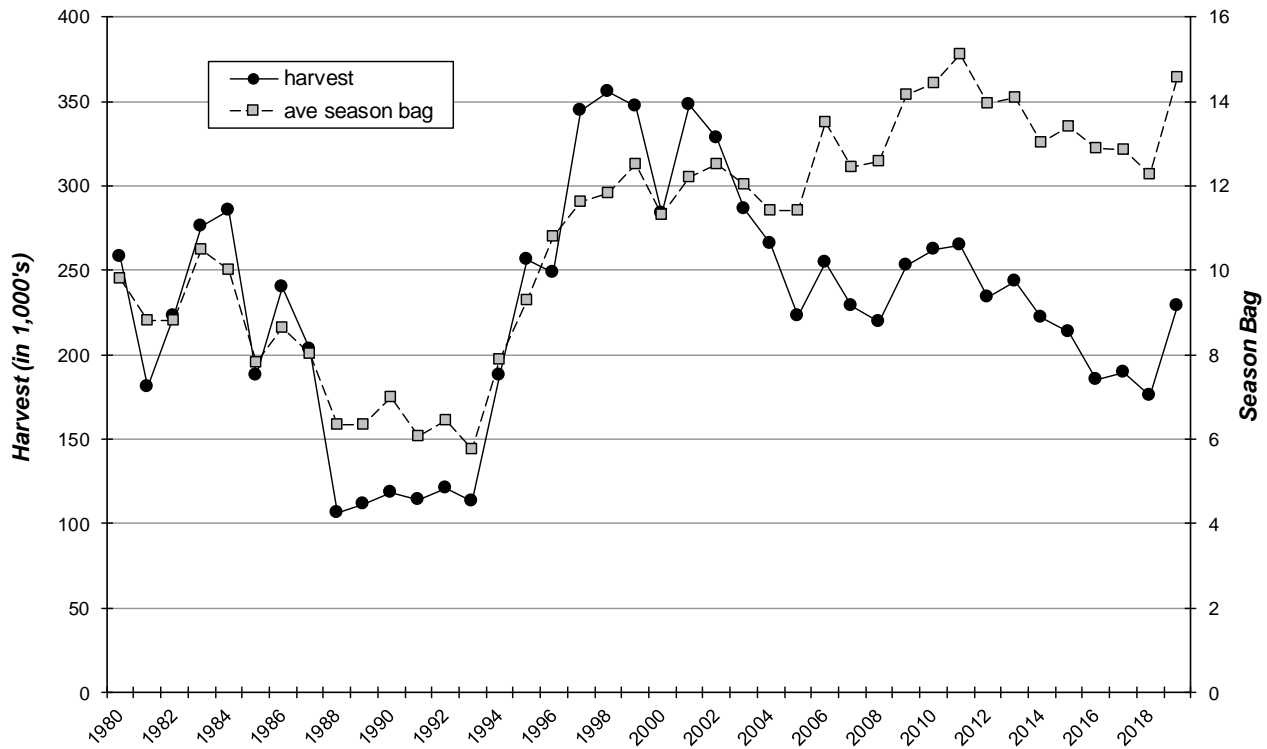
** Calculation uses "# projected" values without correction for unknown/unreported county values.

**2019 Reported Nonresident Duck Hunting
Distribution by County**

COUNTY	00A	00B	00V	00X	00Y	00Z	11A	00B PERCENT	00V PERCENT	00Y PERCENT
Minnehaha	0	3	0	0	0	0	0	0.3%	0.0%	0.0%
Pennington	0	2	1	0	2	4	0	0.2%	0.5%	0.7%
Brown	0	128	65	0	0	0	0	11.3%	33.7%	0.0%
Beadle	0	21	1	0	0	7	0	1.9%	0.5%	0.0%
Codington	0	36	0	0	21	0	0	3.2%	0.0%	7.5%
Brookings	0	29	1	0	1	12	0	2.6%	0.5%	0.4%
Yankton	27	0	0	0	0	0	0	0.0%	0.0%	0.0%
Davison	0	7	0	0	0	2	0	0.6%	0.0%	0.0%
Lawrence	0	2	0	0	0	5	0	0.2%	0.0%	0.0%
Aurora	0	15	1	0	0	3	0	1.3%	0.5%	0.0%
Bennett	1	0	1	0	0	0	6	0.0%	0.5%	0.0%
Bon Homme	62	0	0	0	0	0	0	0.0%	0.0%	0.0%
Brule	0	21	2	0	0	16	0	1.9%	1.0%	0.0%
Buffalo	0	2	0	0	1	1	0	0.2%	0.0%	0.4%
Butte	0	2	0	0	0	2	0	0.2%	0.0%	0.0%
Campbell	0	8	10	1	0	0	0	0.7%	5.2%	0.0%
Charles Mix	24	7	0	0	0	0	2	0.6%	0.0%	0.0%
Clark	0	86	1	1	50	0	0	7.6%	0.5%	17.9%
Clay	6	1	0	0	1	0	0	0.1%	0.0%	0.4%
Corson	0	2	0	0	0	0	0	0.2%	0.0%	0.0%
Custer	0	1	0	0	0	1	0	0.1%	0.0%	0.0%
Day	0	255	0	0	114	0	0	22.6%	0.0%	40.9%
Deuel	0	8	1	0	5	0	0	0.7%	0.5%	1.8%
Dewey	0	0	0	0	0	1	0	0.0%	0.0%	0.0%
Douglas	0	8	0	0	2	6	0	0.7%	0.0%	0.7%
Edmunds	0	35	51	0	1	0	0	3.1%	26.4%	0.4%
Fall River	0	0	0	0	0	0	0	0.0%	0.0%	0.0%
Faulk	0	16	27	0	0	1	0	1.4%	14.0%	0.0%
Grant	0	4	0	0	3	0	0	0.4%	0.0%	1.1%
Gregory	0	0	0	0	0	0	0	0.0%	0.0%	0.0%
Haakon	0	2	0	0	0	2	0	0.2%	0.0%	0.0%
Hamlin	0	21	0	0	8	0	0	1.9%	0.0%	2.9%
Hand	0	8	0	2	0	9	0	0.7%	0.0%	0.0%
Hanson	0	3	0	0	0	3	0	0.3%	0.0%	0.0%
Harding	0	1	0	0	0	0	0	0.1%	0.0%	0.0%
Hughes	0	1	0	12	0	0	0	0.1%	0.0%	0.0%
Hutchinson	1	2	0	0	0	5	0	0.2%	0.0%	0.0%
Hyde	0	1	0	1	0	0	0	0.1%	0.0%	0.0%
Jackson	0	0	0	0	0	0	0	0.0%	0.0%	0.0%
Jerauld	0	5	0	0	0	1	0	0.4%	0.0%	0.0%
Jones	0	0	0	0	0	0	0	0.0%	0.0%	0.0%
Kingsbury	0	34	0	0	1	7	0	3.0%	0.0%	0.4%
Lake	0	6	1	0	1	4	0	0.5%	0.5%	0.4%
Lincoln	0	1	0	0	1	0	0	0.1%	0.0%	0.4%
Lyman	0	3	0	10	0	0	0	0.3%	0.0%	0.0%
McCook	0	5	0	0	0	2	0	0.4%	0.0%	0.0%
McPherson	0	43	17	0	0	0	0	3.8%	8.8%	0.0%
Marshall	0	79	0	0	27	1	0	7.0%	0.0%	9.7%
Meade	0	2	0	0	0	2	0	0.2%	0.0%	0.0%
Mellette	0	1	0	0	0	0	0	0.1%	0.0%	0.0%
Miner	0	18	0	0	0	7	0	1.6%	0.0%	0.0%
Moody	0	2	0	0	0	0	0	0.2%	0.0%	0.0%
Perkins	0	1	0	0	0	4	0	0.1%	0.0%	0.0%
Potter	0	4	2	14	0	0	0	0.4%	1.0%	0.0%
Roberts	0	97	0	1	24	0	0	8.6%	0.0%	8.6%
Sanborn	0	17	0	0	0	4	0	1.5%	0.0%	0.0%
Spink	0	49	0	0	16	1	0	4.3%	0.0%	5.7%
Stanley	0	1	0	1	0	0	0	0.1%	0.0%	0.0%
Sully	0	4	1	13	0	0	0	0.4%	0.5%	0.0%
Tripp	0	1	0	0	0	0	0	0.1%	0.0%	0.0%
Turner	0	1	0	0	0	0	0	0.1%	0.0%	0.0%
Union	14	0	0	0	0	0	0	0.0%	0.0%	0.0%
Walworth	0	15	10	0	0	0	0	1.3%	5.2%	0.0%
Ziebach	0	1	0	0	0	0	0	0.1%	0.0%	0.0%
Oglala Lakota	0	0	0	0	0	0	0	0.0%	0.0%	0.0%
Todd	0	0	0	0	0	0	0	0.0%	0.0%	0.0%
TOTALS:	135	1,128	193	56	279	113	8	100.0%	100.0%	100.0%

Last updated: 16 June 2020

STATEWIDE DUCK (all species) HARVEST, 1980-2019



STATEWIDE DUCK SEASON PARTICIPATION, 1980-2019

