



AGENDA

Game, Fish and Parks Commission

March 3-4, 2022
Missouri Avenue Event Center
217 W Missouri Ave. Pierre, SD

This meeting will be held in person, via zoom/conference call, and livestream. To listen to the entire meeting beginning at 1:00 p.m. via livestream at <https://www.sd.net/remote1/> or join via zoom by clicking on the link below. Depending on the application you use you may be required to enter the meeting ID and password. Remember to **enter your display name and mute your microphone**. To help keep background noise and distractions to a minimum, make sure you **mute your microphone and turn off your video** when you are not speaking.

THURSDAY

Zoom Meeting Link <https://state-sd.zoom.us/j/98154270855?pwd=NFNHWEJ4b1BvS2xzNW85UzI2bzZGUT09>
or join via conference call Dial 1 669 900 9128 Meeting ID: 981 5427 0855 Passcode: 516010

FRIDAY

Zoom Meeting Link <https://state-sd.zoom.us/j/94957809306?pwd=cFB4V2NXZm1tY0lzSVVUajhmTjlQZz09>
or join via conference call Dial 1 669 900 9128 Meeting ID: 949 5780 9306 Passcode: 570281

Public Input: To provide comments join the meeting in person, via zoom or conference call per the info above. To conduct the public hearing and/or open forum as efficiently as possible we ask those wishing to testify to **register by 1:00 pm CT the day of the meeting by email to Rachel.comes@state.sd.us**. Testifiers should provide their full names, whom they are representing, city of residence, and which proposed topic they will be addressing.

Written comments can be submitted at <https://gfp.sd.gov/forms/positions/>. To be included in the public record comments must include full name and city of residence and meet the **submission deadline of seventy-two hours before the meeting (not including the day of the meeting)**

Call to order 1:00 PM CT/ 12:00 PM CT

Division of Administration

Action Items:

1. Conflict of Interest Disclosure
2. Approve Minutes of the January 2022 Meeting and February 2022 Special Meeting
<https://gfp.sd.gov/commission/archives/>
3. Additional Commissioner Salary Days

Information Items:

4. Legislative Session Summary
5. Wildlife Damage Management Specialist of the Year Award
6. SD Bowhunters Conservation Officer of the Year Award
7. Parks and Wildlife Foundation Update
8. Go Outdoors SD Update
9. Fishing Marketing Plan
10. HuntSafe Program Update
11. Parks Programming and Social Media

Petitions

12. Nonresident Use of Hounds for Hunting

Public Hearing 2:00 PM

Portion of the meeting designated for public comment on items pertaining to finalizations listed on the agenda
(Typically limited to 3 minutes per person.)

Open Forum

Portion of the meeting designated for public comment on other items of interest. *(Typically limited to 3 minutes per person)*

Proposals

13. Public Waters – Indian Springs
14. Waterfowl Seasons
15. Elk License Allocation
16. License Forms and Fees
17. Application for License
18. Elk Seasons (April Finalization)
19. Missouri River (Pierre) Waterfowl Refuge (April Finalization)
20. Bighorn Sheep (April Finalization)
21. Lake Francis Case Walleye Regulations (April Finalization)
22. Public Waters (April Finalization)
23. License Agent Processes (April Finalization)
24. Cancellation Policy (April Finalization)

Division of Parks and Recreation

Action Items:

25. Lake Vermillion SE Boat Ramp Park Entrance License Requirement

Information Items:

26. DOT Collector Road Funding Plan 2023
27. Camping, Visitation and Revenue Report

Division of Wildlife

Action Items:

28. Track Chair Fundraising – Samp Family
29. Shooting Range Land Purchase

Information Items:

30. Nelson-Hendrickson GPA Exchange
31. Mentored Volunteer Hunting Program
32. Nest Predator Bounty Program Update
33. Waterfowl Update
34. Elk Population Update
35. License Sales Update

Solicitation of Agenda Items from Commissioners

Adjourn

Next meeting information: April 7-8 – Watertown, SD

**Minutes of the Game, Fish, and Parks Commission
January 4-5, 2022**

Chairman Russell Olson called the meeting to order at 1:00 p.m. CT. Commissioners Travis Bies, Julie Bartling, Jon Locken, Stephanie Rissler, Doug Sharp, Charles Spring, Robert Whitmyre and Russell Olson were present. Public and staff were able to listen via SDPB livestream and participate via video conference or in person with approximately 50 total participants via zoom and in person.

DIVISION OF ADMINISTRATION

Conflict of Interest Disclosure

Chairman Olson called for conflicts of interest to be disclosed. None were presented.

Approval of Minutes

Olson called for any additions or corrections to the December 9-10, 2021 regular meeting minutes or a motion for approval.

Motion by Whitmyre with second by Locken TO APPROVE THE MINUTES OF THE DECEMBER 9-10, 2021 MEETING. Motion carried unanimously.

Additional Commissioner Salary Days

Olson called for additional salary days. Bies and Spring each submitted 1 salary day (Shooting Range Meeting), Motion by Locken with second by Rissler TO APPROVE THE SALARY DAY AS REQUESTED. Motion carried unanimously.

Election of Officers

Jon Kotilnek, senior staff attorney, opened the floor for nominations.

Motion by Sharp with second by Rissler TO NOMINATE OLSON AS CHAIRMAN. Motion carried unanimously.

Motion by Olson with second by Locken TO NOMINATE SHARP AS VICE CHAIR. Motion carried unanimously.

Legislative Update

Secretary Robling provided an update on proposed legislation for 2022.

Budget Presentation

Secretary Robling and the Division Directors presented the budget.

Go Outdoors SD Update

Heather Villa, wildlife administration chief, provided an update

South Dakota Shooting Range Update

Secretary Robling provided an update on the status of the shooting range.

PETITION

Adding Butte County to Unit 2 Goose Hunting Season

Tom Kirschenmann, wildlife division director, presented the petition received from Ian Williams to add Butte County into unit 2 for goose hunting because there are geese in the area by the end of the season.

Motion by Sharp, second by Locken to deny the petition. Motion carried unanimously.

Motion by Whitmyre, second by Locken to adopt resolution 22-01 (appendix A) denying the petition. Motion carried unanimously.

Modify the Possession Requirements for Walleye on Lake Francis Case

Kirschenmann presented the petition submitted by Tom Steinhauser to amend the rule for ice fishing that states you must keep the first four walleye caught. Steinhauser's petition states: This regulation has a direct economic impact on our business. People will inquire about coming, and after learning about this regulation they chose not to come. They are having to pay \$67 for a license, \$25 for a habitat stamp which brings them to \$92. If they add the cost of a guide or lodging to that, they feel it's not worth coming out for. So, Platte Creek Lodge and all other local businesses lose out. Not to mention the possible license revenue to the state. Fishing on Lake Francis Case typically occurs in the 30 foot range. Fisherman on Lakes Sharpe and Oahe fish the same depths or deeper water and have no regulations about keeping the first 4 fish. Additionally, we don't always fish that depth. A lot of the time we are fishing in 10-20 feet of water. Also, this seems to be a social regulation and not a biological regulation. In my opinion more fish are lost due to deep hooking and warm water fishing than are lost in the winter due to deep water. There is a deep water trolling program in the summer that is heavily utilized and the catch is much more than the ice catch. Ice anglers on Lake Francis Case catch a fraction of the fish that the open water or summer fishermen catch. Additionally, the day the the ice comes off we can fish the same spot and the same fish in the same depth in a boat and catch and throw back as we please. Local talk around town suggests that people are not following this rule. This rule is difficult to enforce because people fish in shacks and you can't see them. Thank you and please consider amending this rule to simplify and help us and other businesses.

Discussion noted this is a social issue and not a biological issue.

Motion by Whitmyre, second by Rissler to approve the petition. Motion carried unanimously.

Modify the Missouri River Refuge

Kirschenmann presented the petition received from Larry Steffen to enlarge the Pierre area refuge to include the area down river from LaFramboise Island to the tip of Farm Island and upstream above the Oahe Dam from Corp Bay area to the tip of Peoria Flats.

Motion by Sharp, second by Rissler to deny the petition. Motion carried unanimously.

It was noted the Commission requested staff look into this issue further to submit a proposal.

Motion by Locken, second by Bies to adopt resolution 22-02 (appendix B) denying the petition. Motion carried unanimously.

OPEN FORUM

Jon Kotilnek, senior staff attorney, opened the floor for discussion from those in attendance on matters of importance to them that may not be on the agenda. None presented.

PROPOSALS

Elk Seasons

Chad Switzer, wildlife program administrator, presented the recommended changes to the elk seasons.

Black Hills Elk

1. Adjust the total number of available licenses from 425 "any elk" and 700 "antlerless elk" licenses (total of 1,125 licenses) to no more than 500 "any elk" and 1,000 "antlerless elk" licenses (total of 1,500 licenses).
2. Modify the boundaries of BHE-H9A and BHE-H9B to correct unit boundary.

He explained the recommended maximum number of elk licenses will be established in administrative rule and the GFP Commission via administrative action will determine specific number of licenses by tag types and allocation amongst hunting units. Updated population objectives and any recommended license adjustments will be shared at the March Commission meeting once preliminary harvest estimates have been obtained and population modeling exercises have been completed. There is currently a small geographic area that technically does not reside in any elk hunting unit; this unit boundary modification will correct this oversight.

Motion by Bies with second by Spring TO APPROVE THE RECOMMENDED CHANGES TO THE BLACK HILLS ELK SEASON. Motion carried unanimously.

Custer State Park Elk

1. Adjust the total number of available licenses from 9 "any elk" licenses to no more than 15 "any elk" licenses.
2. Administrative rule clean-up for season dates.

Switzer explained the recommended maximum number of elk licenses will be established in administrative rule and the GFP Commission via administrative action will determine specific number of licenses by tag types and allocation amongst hunting units. Updated population objectives and any recommended license adjustments will be shared at the March Commission meeting once preliminary harvest estimates have been obtained and population modeling exercises have been completed. Of the nine any elk licenses issued for Custer State Park, eight will be valid specifically for Custer State Park and the ninth any elk license will be made available to a non-governmental organization as a raffle license that is valid in Custer State Park and any Black Hills elk hunting unit in which an any elk license is issued.

Motion by Rissler with second by Locken TO APPROVE THE RECOMMENDED CHANGES TO THE CUSTER STATE PARK ELK SEASON. Motion carried unanimously.
Custer State Park Archery Elk

1. Adjust the total number of available licenses from 3 "any elk" to no more than 10 "any elk" licenses.

Switzer explained the recommended maximum number of elk licenses will be established in administrative rule and the GFP Commission via administrative action will determine specific number of licenses by tag types and allocation amongst hunting units. Updated population objectives and any recommended license adjustments will be shared at the March Commission meeting once preliminary harvest estimates have been obtained and population modeling exercises have been completed.

Motion by Rissler with second by Whitmyre TO APPROVE THE RECOMMENDED CHANGES TO THE CUSTER STATE PARK ARCHERY ELK SEASON. Motion carried unanimously.

Archery Elk

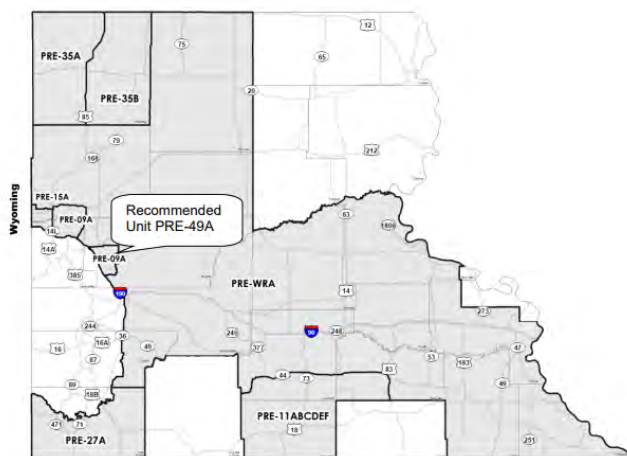
1. Adjust the number of licenses available from 142 “any elk” and 80 “antlerless elk” licenses (total of 222 licenses) to no more than 200 “any elk” and 100 “antlerless elk” licenses (total of 300 licenses).

Switzer explained the recommended maximum number of elk licenses will be established in administrative rule and the GFP Commission via administrative action will determine specific number of licenses by tag types and allocation amongst hunting units. Updated population objectives and any recommended license adjustments will be shared at the March Commission meeting once preliminary harvest estimates have been obtained and population modeling exercises have been completed.

Motion by Rissler with second by Locken TO APPROVE THE RECOMMENDED CHANGES TO THE ARCHERY ELK SEASON. Motion carried unanimously.

Prairie Elk

1. Adjust the number of licenses available from 78 “any elk” and 178 “antlerless elk” licenses (total of 256 licenses) to no more than 100 “any elk” and 300 “antlerless elk” licenses (total of 400 licenses).
2. Modify Unit PRE-9A (see map).
3. Establish a new unit (PRE-49A) to include a portion of Meade County and season dates (see map).
4. Correct season dates in administrative rule for units PRE-11B, PRE-11C, PRE-11D, PRE-35A, and PRE-35B.



Switzer explained the recommended maximum number of elk licenses will be established in administrative rule and the GFP Commission via administrative action will determine specific number of licenses by tag types and allocation amongst hunting units. Updated population objectives and any recommended license adjustments will be

shared at the March Commission meeting once preliminary harvest estimates have been obtained and population modeling exercises have been completed. The recommended changes to prairie elk hunting unit boundaries and season date changes are to improve elk management on private land and simplify season dates.

Motion by Sharp with second by Rissler TO APPROVE THE RECOMMENDED CHANGES TO THE PRAIRIE ELK SEASON. Motion carried unanimously.

Bighorn Sheep

Switzer presented the recommended changes to the bighorn sheep hunting season.

1. Increase the number of “ram bighorn sheep” licenses from 8 to 11.
2. Change the mandatory orientation meeting from “preceding the opening day of the season” to “preceding the first day of hunting by the license holder”.

He explained that due to the recent *M. ovi* pneumonia outbreak in Unit 3, both the Department and Badlands National Park recommend issuing no licenses in this unit. Based on the strong numbers of ram bighorn sheep across all age classes, the increase to the number of licenses being recommended in Custer State Park will not negatively affect the viewability of bighorn sheep for park visitors and will provide additional hunting opportunities. Modifying the requirement for the mandatory hunter orientation will provide better customer service to those licensed hunters. In addition to the licenses allocated by units above, the Department recommends the auction license to be valid in Units 2, 4, and Custer State Park.

Motion by Sharp with second by Rissler TO APPROVE THE RECOMMENDED CHANGES TO THE BIGHORN SHEEP SEASON. Motion carried unanimously.

Public Waters

Al Nedved, parks and recreation deputy director, presented the recommended changes to remove no boating zones and allow for non-motorized watercraft within the Waubay National Wildlife Refuge and Waubay State Game Bird Refuge. They explained GFP and the USFWS have been in collaboration to discuss ways to increase recreational opportunities, while still meeting the objectives of the refuge system. The USFWS Refuge System recently removed restrictions to increase outdoor opportunities at Waubay National Wildlife Refuge within their mission and management responsibilities. These respective administrative rules are prohibiting the USFWS from allowing these outdoor opportunities.

License Agent Process

Keith Fisk, program manager, presented the recommended change to modify two administrative rules to align new business practices with GFP’s new licensing system and requirements. To adjust electronic ACH transfers, processes, and timeframe for payments and remove the use of Emergency Authorization books. He explained GFP will be launching the new licensing system on December 15, 2021. Once this occurs, license agents will be required to work within new business practices (i.e. electronic ACH transfers and different timeframes when the electronic money sweeps occur) to continue to be a license agent for GFP. License agents serve an important role for selling licenses on behalf of GFP as well as providing hunters with the ability to purchase hunting and fishing licenses outside normal business hours that GFP offices are open. As technology advances, the ability to sell paper hunting and fishing licenses

is no longer needed. Customers will be able to purchase licenses online (through GFP's licensing website) or by visiting a license agent or by calling GFP's call center.

Camping Reservation Cancellation Policy

Scott Simpson, division director, presented the recommended changes to allow for cancellation of campsites and lodging facilities without fee for a period of time after a reservation is made. After that period has elapsed, a fee of one-half of the first night's camping or lodging fees will be assessed for both types of overnight use. This rule proposal helps simplify cancellation policies and associated fees by providing one cancellation procedure for campsites, and one for lodging facilities and Custer State Park French Creek Horse Camp. Simpson further explained The Department's cancellation policy was developed at a time of lower demand for camping and lodging facilities, and the ability to resell those facilities was more difficult. The current procedure is to assess a cancellation fee of one-night's camping or \$25 for cabins/lodges effective immediately after the reservation is made. With the increased demand for camping and lodging facilities, the ability to fill those vacancies left by cancellations is much more likely. This change will also help the Department be more consistent with industry cancellation standards and allow more flexibility of users to cancel a reservation without penalty due to unforeseen circumstances.

DIVISION OF PARKS AND RECREATION

Sylvan Lake Lodge Fire

Matt Snyder, regional supervisor, provided an update.

Custer State Park Buffalo Auction Results

Matt Snyder, regional supervisor, provided an update.

Custer State Park Resort Repair and Maintenance Plan Update

Matt Snyder, regional supervisor, provided an update.

Lake Vermillion SE Boat Ramp Park Entrance License Requirement

Al Nedved, parks and recreation deputy director, provided an update.

Fort Sisseton Master Plan Update

Al Nedved, parks and recreation deputy director, provided an update.

Year in Sales and Revenue Report

Al Nedved, parks and recreation deputy director, provided an update.

DIVISION OF WILDLIFE

Bighorn Sheep Auction Licenses

John Kanta, wildlife administration chief, presented the recommendation to authorize auction tags and include units 2, 4, and Custer State Park to the area valid to hunt with the bighorn sheep auction license for the 2022 bighorn sheep hunting season.

Motioned by Bies second by Spring TO APPROVE THE ADMINISTRATIVE GRANTING THE REQUEST FROM THE WILD SHEEP FOUNDATION – MIDWEST CHAPTER TO OBTAIN A BIG HORN SHEEP AUCTION LICENSE. Motion carried unanimously.

Motioned by Bies second by Spring TO APPROVE THE ADMINISTRATIVE ACTION ALLOWING TO INCLUDE UNITS 2,4 AND CUSTER STATE PARK. Motion carried unanimously.

Sage Grouse Plan

Chad Swtizer, wildlife program administrator, presented the sage grouse plan for approval. He explained the process noting revisions went out for comment last fall.

Travis Runia, senior upland game biologist, detailed comments received and noted change to include a better map for the Corp area.

Motion by Whitmyre, second by Sharp TO APPROVE THE SAGE GROUSE PLAN. Motion carried unanimously.

Bighorn Sheep Status

Chad Lahman, senior wildlife biologist, provided a powerpoint presentation regarding the distribution of bighorn sheep and harvest survey data.

License Sales Update

Tom Kirschenmann, wildlife division director, provided an update on resident and nonresident license sales.

EHD Impact on Licenses

Chad Swtizer, wildlife program administrator, provided an update.

Lake Oahe Fishery Update

Mike Smith, fisheries biologist, provided an update.

Habitat and Access Update

John Kanta, wildlife administration chief, and John Lott, fisheries chief, provided updates.

Walk in Area Survey

Faren Wolter, human dimensions specialist, provided an update.

Adjourn

Meeting adjourned at 10:40 a.m.

Respectfully Submitted,



Kevin Robling, Department Secretary

Appendix A
Resolution 22-01

WHEREAS, Ian Williams of Whitewood, South Dakota, submitted a Petition to the Game, Fish and Parks Commission (Commission) dated December 11, 2021, requesting that the Game, Fish and Parks Commission amend ARSD § 41:06:16:007 (Goose hunting season, open units) – to combine units two and three into one hunting unit for the reasons more fully set out in the petition (hereinafter referred to as “the Petition”); and

WHEREAS, all members of the Commission have been furnished with and have reviewed a copy of the Petition; and

WHEREAS, the Commission has been advised that a copy of the Petition has been served on all members of the Interim Rules Review Committee and Director of the Legislative Research Council as required by SDCL § 1-26-13; and

WHEREAS, the Commission has been advised that SDCL § 1-26-13 requires that within thirty (30) days of submission of a Petition, the Commission shall either “deny the petition in writing (stating its reasons for the denials) or shall initiate rule-making proceedings in accordance with SDCL 1-26-4.”; and

WHEREAS, the Commission has been advised and is of the opinion that a hearing on the Petition is neither statutorily required nor necessary; and

WHEREAS, the Commission has reviewed and carefully considered the requirements and procedures set out in SDCL §1-26-13 and the contents of the Petition, including the reasons advanced by Petitioner in support of combining goose units two and three into one unit; and

WHEREAS, Butte County is currently included in Unit 1 to maximize Canada goose harvest from early fall through early December as in most years this is when the most opportunity exists; and

WHEREAS, early fall goose harvest targets locally breeding individuals; moving Butte County into Unit 2 would reduce the ability to manage these geese. Early harvest on local Canada goose populations helps maintain goose population objectives and maximizes opportunities for goose hunters.

NOW, THEREFORE, BE IT RESOLVED, that the Commission does hereby deny the Petition for the reasons hereinabove stated in this Resolution, which said Resolution as adopted by the Commission shall constitute the Commission’s written denial of the Petition and its reasons therefore.

BE IT FURTHER RESOLVED that the Petition, a record of the Commission’s discussions concerning same, and this Resolution be made a part of the Minutes of the Commission meeting at which this Resolution is adopted, and further, that the Department

be and it is hereby authorized and directed in compliance with SDCL §1-26-13 to serve a copy of an extract of that portion of the Commission minutes which pertain to the Commission's discussion of the Petition and its adoption of this Resolution, including a copy of the Resolution, on all members of the Interim Rules Review Committee and Director of the Legislative Research Council with copies also to be provided to the Petitioner, Ian Williams of Whitewood, South Dakota.

Appendix B
Resolution 22-02

WHEREAS, Larry Steffen of Pierre, South Dakota, submitted a Petition to the Game, Fish and Parks Commission (Commission) dated December 29, 2021, requesting that the Game, Fish and Parks Commission amend ARSD § 41:05:02:68 (Missouri River refuges) – to modify refuge on Missouri River for the reasons more fully set out in the petition (hereinafter referred to as “the Petition”); and

WHEREAS, all members of the Commission have been furnished with and have reviewed a copy of the Petition; and

WHEREAS, the Commission has been advised that a copy of the Petition has been served on all members of the Interim Rules Review Committee and Director of the Legislative Research Council as required by SDCL § 1-26-13; and

WHEREAS, the Commission has been advised that SDCL § 1-26-13 requires that within thirty (30) days of submission of a Petition, the Commission shall either “deny the petition in writing (stating its reasons for the denials) or shall initiate rule-making proceedings in accordance with SDCL 1-26-4.”; and

WHEREAS, the Commission has been advised and is of the opinion that a hearing on the Petition is neither statutorily required nor necessary; and

WHEREAS, the Commission has reviewed and carefully considered the requirements and procedures set out in SDCL §1-26-13 and the contents of the Petition, including the reasons advanced by Petitioner in support of modifying the refuge on the Missouri River; and

WHEREAS, there have been extensive discussions over existing waterfowl refuges on the Missouri River system over the past few years; and

WHEREAS, there is no regulatory means of making a refuge permanent thus the petition submitted is an invalid rule change request; and

WHEREAS, the commission believes the requested additions to the Pierre waterfowl refuges deserves more discussion and will propose the expanded refuges for public comment.

NOW, THEREFORE, BE IT RESOLVED, that the Commission does hereby deny the Petition for the reasons hereinabove stated in this Resolution, which said Resolution as adopted by the Commission shall constitute the Commission’s written denial of the Petition and its reasons therefore.

BE IT FURTHER RESOLVED that the Petition, a record of the Commission’s discussions concerning same, and this Resolution be made a part of the Minutes of the

Commission meeting at which this Resolution is adopted, and further, that the Department be and it is hereby authorized and directed in compliance with SDCL §1-26-13 to serve a copy of an extract of that portion of the Commission minutes which pertain to the Commission's discussion of the Petition and its adoption of this Resolution, including a copy of the Resolution, on all members of the Interim Rules Review Committee and Director of the Legislative Research Council with copies also to be provided to the Petitioner, Larry Steffen of Pierre, South Dakota.

**Minutes of the Game, Fish, and Parks Commission
February 7, 2022**

Chairman Russell Olson called the meeting to order at 3:33 p.m. CT. Commissioners Julie Bartling, Jon Locken, Stephanie Rissler, Doug Sharp, Charles Spring, Robert Whitmyre and Russell Olson were present via zoom. Public and staff were able to listen via SDPB livestream and participate via video conference or in person with approximately 30 total participants via zoom and in person.

DIVISION OF ADMINISTRATION

Conflict of Interest Disclosure

Chairman Olson called for conflicts of interest to be disclosed. None were presented.

Bies joined the meeting

Executive Session

Motioned by Whitmyre, second by Rissler TO ENTER EXECUTIVE SESSION PURSUANT TO SDCL 1-25-2 (4) TO PREPARE FOR CONTRACT NEGOTIATIONS. Motion carried unanimously.

The Executive Session began at 3:39 p.m. in a private session via zoom. Commissioners Julie Bartling, Jon Locken, Russell Olson, Stephanie Rissler, Doug Sharp, Charles Spring, Robert Whitmyre participated. Secretary Robling, Scott Simpson, Sean Blanchette, and Rachel Comes were present. Concluded 3:58 p.m.

Spring Creek Restaurant Concession

Sean Blanchette, parks and recreation, presented information on the proposals received for the concessionaire of restaurant at Spring Creek Recreation Area.

Motioned by Sharp, second by Rissler TO AUTHORIZE GFP TO OFFER A ONE YEAR LEASE FOR THE SPRING CREEK RESTAURANT TO LAUREN FORSCH. Motion carried unanimously.

Open Forum

Scott Simpson, parks and recreation director opened the floor for discussion from those in attendance on matters of importance to them that may not be on the agenda. None presented.

Adjourn

Meeting adjourned at 4:22 p.m.

Respectfully Submitted,



Kevin Robling, Department Secretary

Comes, Rachel

From: info@gfp.sd.us
Sent: Thursday, February 3, 2022 7:22 PM
To: joshua.p.didier@gmail.com
Cc: Comes, Rachel
Subject: Petition for Rule Change Form

South Dakota - Game, Fish, and Parks

Petition for Rule Change

A new form was just submitted from the <http://gfp.sd.gov/> website with the following information:

ID: 129
Petitioner Name: Joshua Didier
Address: 1911 HWY 24
Hulett, WY 82720
Email: joshua.p.didier@gmail.com
Phone: 307-281-2103
Rule Identification: Furbearer/ Raccoon
Describe Change: We are requesting a change to the non resident rule; the use of hounds to take raccoons.
Reason for Change: I live the border of SD. I grew up in Belle Fourche SD. A lot of us have family in both states. There isn't much of a raccoon population in eastern WY. Yet they are overpopulated in Butte county. SD residents are allowed to hunt in WY for mountain lions, bobcats and raccoons. Yet the law doesn't reciprocate. Thanks for your time.

GAME, FISH AND PARKS COMMISSION ACTION PROPOSAL

Public Waters/Fishing Seasons

Chapter 41:04:02 and 41:07:02

Commission Meeting Dates:	Proposal	March 3-4, 2002	Pierre
	Public Hearing	May 5, 2022	Custer State Park
	Finalization	May 5-6, 2022	Custer State Park

COMMISSION PROPOSAL

Recommended changes from last year:

1. Modify applicable dates and the area included in "no discharge of a firearm from a boat" of Indian Springs and Antelope Lakes in Clark County.
2. Modify applicable dates and the area included in the closure of fishing from a boat of Indian Springs and Antelope Lakes in Clark County.

SUPPORTIVE INFORMATION

In 2017, HB1001 tasked the SD Game Fish and Parks to work on agreements with landowners on non-meandered water issues. One such agreement was with a landowner on Indian Springs Lake in Clark County. The current rule was put into place in 2018 after discussions with a landowner who owned most of the flooded private property in the Indian Springs basin. It was the opportunity to balance the request of the landowner and the public recreational use of Indian Springs Lake.

Landownership has changed hands since the original agreement. Due to water levels increasing in the area, the new landowner has requested to simplify the boundaries of the current area closed to "discharging a firearm or fishing from a boat" on Indian Springs to also include the waters of Antelope Lake. Antelope Lake is currently designated as a State Waterfowl Refuge. As part of this request, the landowner also agreed to change the start date in the current rules 41:04:02:12b and 41:07:02:01b to October 20th, giving sportsmen and women an additional 10 days in the fall to hunt and fish from a boat while allowing the water to be open to public recreational use during the winter, spring, and summer months. This date would also align with boating regulations on other state refuges.

Indian Springs Lake is a non-meandered body of water thus is subject to landowner request to close it to recreational use if so desires. By GFP staff working with the current landowners, Indian Springs Lake can remain open to public recreational activities with minimal restrictions for 2 months vs being shut down year-round.

DRAFT ADMINISTRATIVE RULE CHANGES

The following are proposed draft changes that are intended to incorporate the recommended changes adopted by the Commission.

41:04:02:12. Clark County public water safety zones. The Clark County public water safety zones are as follows:

(2) The waters of Indian Springs and Antelope Lake west of a line from 42750 174th Street to 42750 177th Street to 424th avenue are designated as a "no discharge of a firearm from a boat" from October 40 20 through December 31.

41:07:02:01. Inland waters. Except as provided in § 41:07:01:05, all species of fish except those species listed in §§ 41:10:02:05 and 41:10:02:06 may be caught, taken, or killed by hook and line year-round within inland waters.

The following restrictions apply to inland waters:

APPROVE _____ **MODIFY** _____ **REJECT** _____ **NO ACTION** _____

(2) In Clark County the waters of Indian Springs and Antelope Lake west of a line from 42750 174th street to 42750 177th street to 424th avenue is closed to fishing from a boat from October 40 20 through December 31.



South Dakota Department of Game, Fish and Parks

Indian Springs / Antelope Lake Boundaries



█ Current Boundary
 █ Proposed Boundary
 - - - Meandered Water Line
 - - - Waterfowl Refuge

APPROVE _____ MODIFY _____ REJECT _____ NO ACTION _____

RESIDENT/NONRESIDENT CRITERIA

1. The Issue
 - None
2. Historical Considerations
 - None
3. Biological Considerations
 - None
4. Social Considerations
 - None
5. Financial considerations
 - None

RECRUITMENT, RETENTION, REACTIVATION (R3) CRITERIA

1. Does the regulation or fee inhibit a user's ability to participate?
 - Yes. It will limit the fishing from a boat and discharging of a firearm from a boat from October 20 to December 31.
2. Does the regulation increase the opportunity for new and existing users?
 - Yes. This rule would allow for an additional 10 days to fish from a boat or discharge of a firearm from a boat in the fall. It will also ensure most of Indian Springs Lake will remain open to ice, spring, and summer fishing.
3. How does the regulation impact the next generation of hunters, anglers, trappers, and outdoor recreationists?
 - Indian Springs Lake is close to communities like Clark and Watertown. Indian Springs Lake remaining open allows an excellent outdoor recreational opportunity.
4. Does the regulation enhance the quality of life for current and future generations by getting families outdoors?
 - Yes. It would allow more time for recreational use of Indian Springs Lake.

FISCAL IMPACT

Making this change and adding 10 additional fishing days on Indian Springs could have significant fiscal impact to the local businesses when the fishing is good.

APPROVE _____ MODIFY _____ REJECT _____ NO ACTION _____

**GAME, FISH AND PARKS COMMISSION ACTION
PROPOSAL**

Youth Waterfowl Hunting Season
Chapter 41:06:49

Commission Meeting Dates:	Proposal	March 3-4, 2022	Pierre
	Public Hearing	May 5, 2022	Custer State Park
	Finalization	May 5-6, 2022	Custer State Park

DEPARTMENT RECOMMENDATION

Duration of Recommendation: 2022 hunting season

Season Dates: September 10-11, 2022

Open Area: Statewide

Daily Limit: Same as for regular duck and goose seasons

Possession Limit: Same as for regular duck and goose seasons

Requirements and Restrictions:

1. Residents and nonresidents who have not reached the age of 18 by the first day of the season may hunt in the youth waterfowl hunting season.
2. Each youth hunter must be accompanied by an adult while hunting.
3. The youth hunter must be properly licensed to hunt waterfowl in the state, unless participating under a Mentored Hunt scenario as described in "Mentored Youth Hunting".
4. All other hunting restrictions will be the same as during the regular waterfowl seasons.

Recommended changes from last year: None.

RESIDENT/NONRESIDENT CRITERIA

Not applicable; no recommended changes.

RECRUITMENT, RETENTION, REACTIVATION (R3) CRITERIA

Not applicable; no recommended changes.

FISCAL IMPACT

Not applicable; no recommended changes.

APPROVE _____	MODIFY _____	REJECT _____	NO ACTION _____
----------------------	---------------------	---------------------	------------------------

GAME, FISH AND PARKS COMMISSION ACTION PROPOSAL

Duck Hunting Season

Chapter 41:06:16

Commission Meeting Dates:	Proposal	March 3-4, 2022	Pierre
	Public Hearing	May 5, 2022	Custer State Park
	Finalization	May 5-6, 2022	Custer State Park

DEPARTMENT RECOMMENDATION

Duration of Recommendation: 2022-23 hunting season

Season Dates and Open Areas:

High Plains Zone:	October 8, 2022 – January 12, 2023
Low Plains North & Low Plains Middle Zone:	September 24 – December 6, 2022
Low Plains South Zone:	October 22, 2022 – January 3, 2023

Daily Limits:

Tier 1 Option (Traditional Daily Bag Limit)

- Ducks: 6 The duck daily limit (including mergansers) may be comprised of no more than: 5 mallards (which may include no more than 2 hens), 3 wood ducks, 2 redheads, 2 canvasbacks, 1 pintail and 1 scaup.
- 2 Bonus blue-winged teal (first 16 days of the season only)
- Low Plains North & Low Plains Middle Zones: September 24 – October 9, 2022
- Low Plains South Zone: October 22 – November 6, 2022
- High Plains Zone: October 8 – 23, 2022

Coots: 15

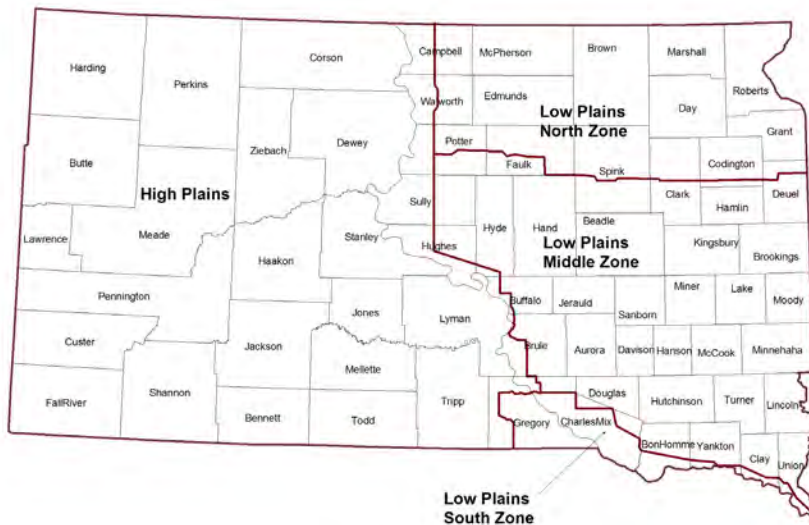
Tier 2 Option (3-Splash Daily Bag Limit)

Ducks: 3 The duck daily limit (including mergansers) may be comprised of three of any species or gender.

Coots: 15

Possession Limits: Three times the daily bag limits.

Duck Hunting Zones



APPROVE _____
 MODIFY _____
 REJECT _____
 NO ACTION _____

Recommended changes from last year:

1. Remove daily bag limit of 5 mergansers (including 2 hooded mergansers) and include all mergansers in the normal duck daily bag limit.
2. Remove the possession limit of mergansers and include all mergansers in the normal duck possession limit.
3. Remove the ability to transfer certain nonresident licenses after a specific date.

SUPPORTIVE INFORMATION

The recommended change cleans up administrative rules for the implementation of the experimental options available to duck hunters. The allowance to transfer certain nonresident licenses after a specific date is unnecessarily complex and creates difficulties with the administration of licenses as well as creates confusion with hunters.

Year	Resident Hunters	Nonresident Hunters	Ducks Harvested
2016	10,533	3,823	185,105
2017	10,557	4,159	189,320
2018	10,271	4,051	175,822
2019	11,295	4,423	229,110
2020	12,285	4,274	241,684

DRAFT ADMINISTRATIVE RULE CHANGES

The following are proposed draft changes that are intended to incorporate the recommended changes adopted by the Commission.

41:06:16:03. Daily bag limit. The daily bag limit is six ducks or mergansers, unless the person chooses the second-tier option at which the daily bag limit is an aggregate of three ducks or mergansers of any species or gender. The total daily limit of six ducks (including mergansers) may include no more than two redheads, one scaup, three wood ducks, one pintail, two canvasback, and five mallards, of which no more than two may be hen mallards.

During the first 16 days of the season an additional two blue-winged teal may be harvested in addition to the daily bag limit.

~~For the first-tier option, the daily bag limit for mergansers is five, of which no more than two may be hooded mergansers.~~

The daily bag limit for coot is 15.

41:06:16:05. Possession limit. The possession limit for ducks (including mergansers) is three times the daily bag limit for each species.

~~A person may possess at any time no more than fifteen mergansers, of which no more than six may be hooded mergansers.~~

A person may possess at any one time no more than 45 coot taken according to the daily bag limit.

41:06:16:11.01. Nonresident waterfowl license purchase restrictions -- ~~Unsold licenses and unit transfer dates.~~ A person may purchase only one nonresident waterfowl license for the fall-winter general waterfowl season each year; however, if licenses remain unsold after October 31, an unlimited number of nonresident waterfowl licenses may be purchased on a first-come, first-served basis. ~~After October 31, any unsold licenses in Units NRW-00A or NRW-11A may be transferred to Unit NRW-00B. After November 15, any unsold licenses in Unit NRW-00Y may be transferred to Unit NRW-00X with the same provisions as Unit NRW-00X licenses.~~

APPROVE _____	MODIFY _____	REJECT _____	NO ACTION _____
---------------	--------------	--------------	-----------------

RESIDENT/NONRESIDENT CRITERIA

1. The Issue
 - Simplification of hunting regulations is a priority for GFP. Over the years for a variety of reasons, unnecessary levels of complexity have developed in duck harvest regulations. This recommended change will reduce regulatory complexity for hunters and have little impact on the resource.
2. Historical Considerations – In the past the U.S. Fish and Wildlife Service (USFWS) allowed a separate bag limit of 5 for mergansers (including 2 hooded mergansers). In 2021, the Central Flyway Council proposed eliminating this additional bag limit for mergansers in the spirit of reducing regulatory complexity and the USFWS agreed.
3. Biological Considerations
 - None
4. Social Considerations
 - Merganser harvest is extremely low in South Dakota, this regulation change reduces complexity and aids in compliance.
5. Financial considerations
 - None

RECRUITMENT, RETENTION, REACTIVATION (R3) CRITERIA

1. Does the regulation or fee inhibit a user's ability to participate? No
2. Does the regulation increase the opportunity for new and existing users? No
3. How does the regulation impact the next generation of hunters, anglers, trappers and outdoor recreationists?
 - The goal of this change is reduction of regulatory complexity.
4. Does the regulation enhance the quality of life for current and future generations by getting families outdoors?
 - Reducing regulatory complexity generally aids in participation and compliance.

FISCAL IMPACT

Not applicable.

APPROVE _____ MODIFY _____ REJECT _____ NO ACTION _____

GAME, FISH AND PARKS COMMISSION ACTION PROPOSAL

Early Fall Canada Goose Chapters 41:06:50

Commission Meeting Dates:	Proposal	March 3-4, 2022	
	Public Hearing	May 5, 2022	Pierre
	Finalization	May 5-6, 2022	Custer State Park
			Custer State Park

DEPARTMENT RECOMMENDATION

Duration of Recommendation: 2022 hunting season

Season Dates: September 1 - 30, 2022 **Open Area:** Unit 1 (see map below)

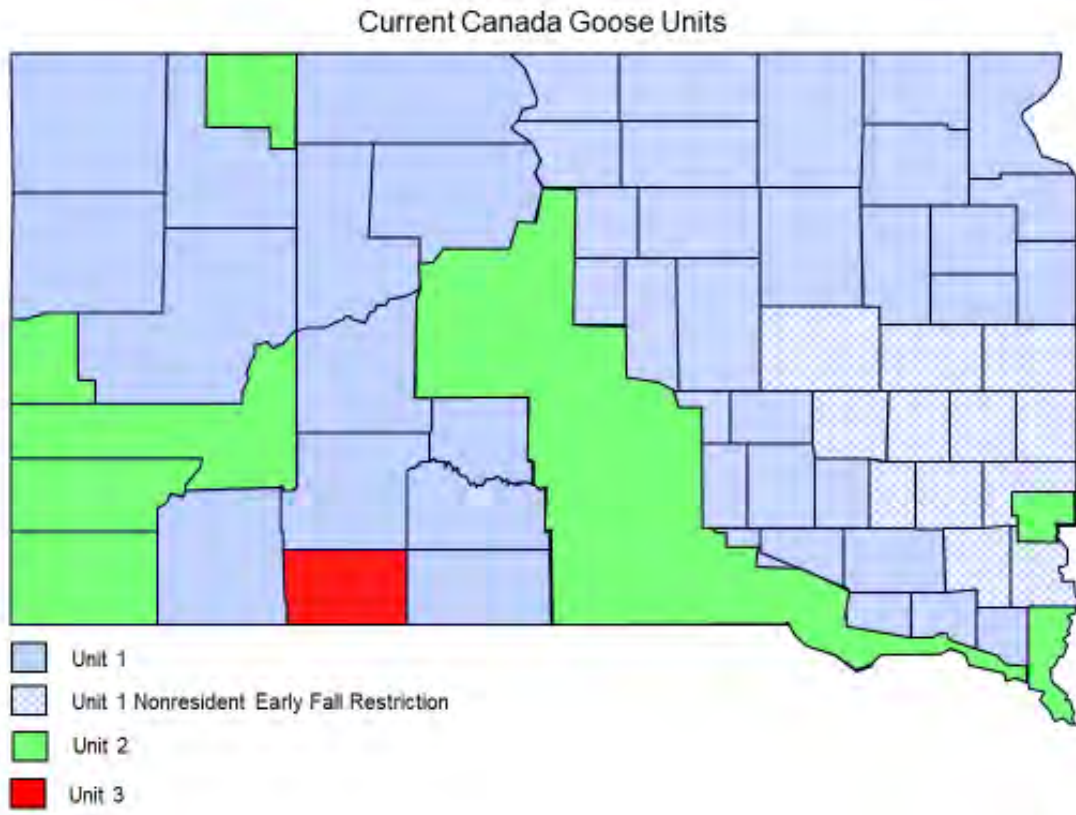
Daily Limit: 15 Canada Geese **Possession Limit:** 45 Canada Geese

Requirements and Restrictions:

1. Shooting hours are one-half hour before sunrise to sunset.

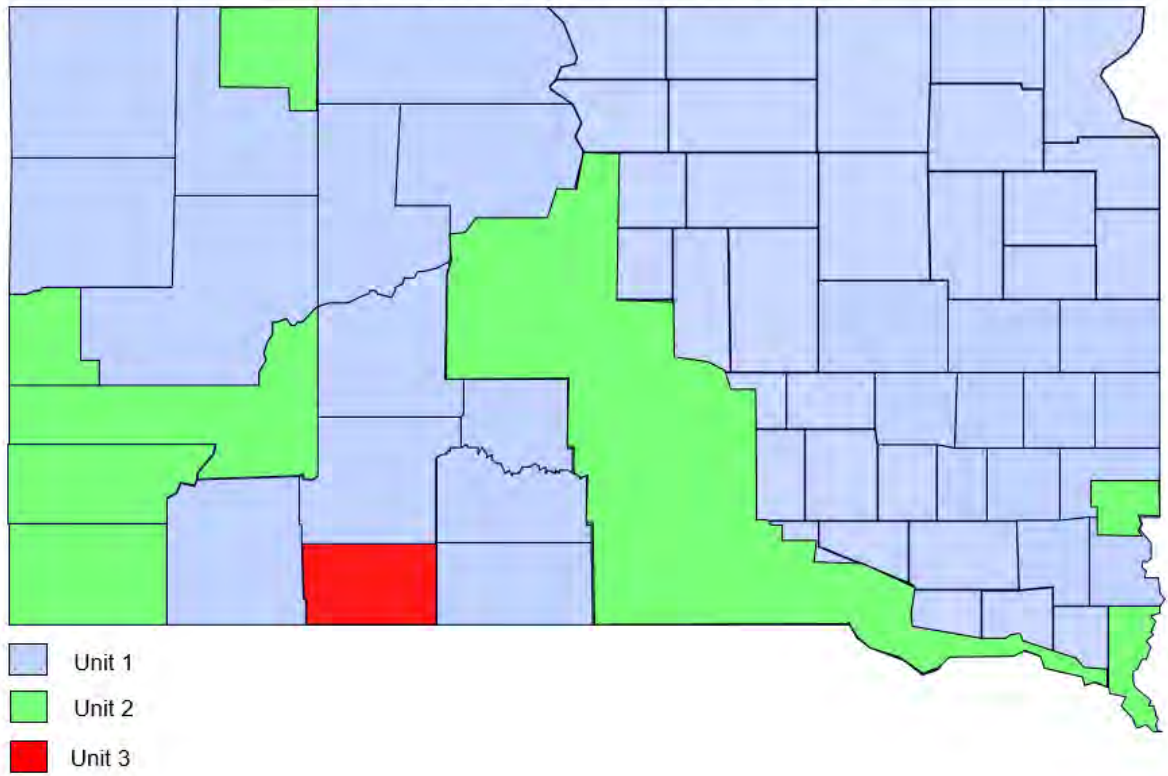
Recommended changes from last year:

1. Remove restriction for nonresident hunters in the counties of Beadle, Brookings, Hanson, Kingsbury, Lake, Lincoln, McCook, Miner, Moody, Sanborn, Turner, Union, and Minnehaha counties.



APPROVE ____ **MODIFY** ____ **REJECT** ____ **NO ACTION** ____

Recommended Canada Goose Units



SUPPORTIVE INFORMATION

Year	Resident Hunters	Nonresident Hunters	Total Hunters	Geese Harvested	Average Season Bag
2016	3,152	275	3,366	20,735	8.2
2017	2,997	213	3,226	27,660	8.0
2018	2,507	229	2,716	25,808	6.6
2019	2,777	207	3,000	17,904	7.0
2020	3,450	408	3,858	21,054	8.8

Year	Nonresident Hunters
2012	526
2013	373
2014	396
2015	327
2016	236
2017	252
2018	229
2019	242
2020	464

APPROVE ____ **MODIFY** ____ **REJECT** ____ **NO ACTION** ____

Current administrative rule found below restricts nonresident license sales for the early fall Canada goose hunting season to no more than 2,000.

41:06:16:11. Maximum number of nonresident waterfowl licenses -- Open units -- Dates -- License restrictions. The maximum number of nonresident waterfowl licenses to be issued by lottery is 4,000 special nonresident waterfowl licenses, 2,000 early fall Canada goose temporary nonresident licenses, 2,000 fall three-day temporary nonresident waterfowl licenses, 100 nonresident youth waterfowl licenses, and 10,000 spring snow goose temporary nonresident licenses divided for administrative purposes as follows:

(3) Unit NRW-00C: those counties as described in § 41:06:50:02. No more than 2,000 early fall Canada goose temporary nonresident waterfowl licenses may be issued;

DRAFT ADMINISTRATIVE RULE CHANGES

The following are proposed draft changes that are intended to incorporate the recommended changes adopted by the Commission.

~~**41:06:50:04. Eligibility requirements and restrictions.** Nonresidents may not hunt early fall Canada goose in the counties of Beadle, Brookings, Hanson, Kingsbury, Lake, Lincoln, McCook, Minor, Moody, Sanborn, Turner, Union, and Minnehaha.~~

RESIDENT/NONRESIDENT CRITERIA

1. The Issue –Very few nonresident hunters take advantage of the current areas open to nonresident Early Fall Canada goose hunting. This proposal will reduce unnecessary regulatory complexity, increase goose hunting opportunity for some nonresidents, and perhaps increase goose harvest in southeastern South Dakota.
2. Historical Considerations – Not applicable
3. Biological Considerations – It is a priority of the Department to increase harvest rates on locally breeding Canada geese. This restriction is not biologically needed and runs contrary to management objectives.
4. Social Considerations – As with all nonresident opportunity in South Dakota there is a perception that any increase in nonresident opportunity will take away opportunity for residents.
5. Financial considerations – There could potentially be a small financial gain for the department through the sale of additional nonresident licenses for this season.

RECRUITMENT, RETENTION, REACTIVATION (R3) CRITERIA

1. Does the regulation or fee inhibit a user's ability to participate? No
2. Does the regulation increase the opportunity for new and existing users? Yes
3. How does the regulation impact the next generation of hunters, anglers, trappers and outdoor recreationists?
 - Provides some additional opportunity for nonresidents to hunt Canada geese in South Dakota.
4. Does the regulation enhance the quality of life for current and future generations by getting families outdoors? Unknown

FISCAL IMPACT

No fiscal impacted expected.

APPROVE _____ MODIFY _____ REJECT _____ NO ACTION _____

GAME, FISH, AND PARKS COMMISSION ACTION PROPOSAL

Goose Hunting Season

Chapter 41:06:16

Commission Meeting Dates:	Proposal	March 3-4, 2022	
	Public Hearing	May 5, 2022	Pierre
	Finalization	May 5-6, 2022	Custer State Park

DEPARTMENT RECOMMENDATION

AUGUST MANAGEMENT TAKE

Duration of Recommendation: 2022 hunting season

Season Dates: August 20-31, 2022

Open Area: Meade County south of South Dakota Highway 34, Pennington County west of the Cheyenne River and the counties of Aurora, Beadle, Bon Homme, Brookings, Brown, Clark, Clay, Codington, Davison, Day, Deuel, Edmunds, Faulk, Hamlin, Hanson, Hutchinson, Grant, Jerauld, Kingsbury, Lake, Lincoln, Marshall, McCook, McPherson, Miner, Minnehaha, Moody, Roberts, Sanborn, Spink, Turner, Union and Yankton.

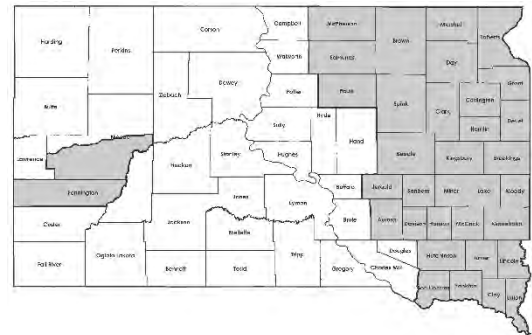
Daily Bag Limit: 15 Canada geese

Possession Limit: None

Licenses: Residents only

Requirements and Restrictions:

1. Annual small game or combination license and state migratory bird certification. Federal waterfowl stamp is not required.
2. Shooting hours are one-half hour before sunrise to sunset.
3. All other restrictions are the same as during the Early Fall and Regular Canada Goose Season.



Open Area

Proposed changes from last year: None.

Year	Number Hunters	Ave. Days Hunted	Ave. Season Bag	Harvest
2012	3,581	3.08	10.26	36,757
2013	2,345	3.42	7.93	18,592
2014	2,302	3.24	8.98	20,671
2015	1,686	3.03	6.06	10,221
2016-20	No estimates available due to sample size			
2021	2,463	2.33	10.13	24,942

RESIDENT/NONRESIDENT CRITERIA

Not applicable; no recommended changes.

RECRUITMENT, RETENTION, REACTIVATION (R3) CRITERIA

Not applicable; no recommended changes.

FISCAL IMPACT

Not applicable; no recommended changes.

APPROVE _____ **MODIFY** _____ **REJECT** _____ **NO ACTION** _____

GAME, FISH AND PARKS COMMISSION ACTION PROPOSAL

Goose Hunting Season

Chapter 41:06:16

Commission Meeting Dates:	Proposal	January 28-29, 2021	Pierre
	Public Hearing	March 4, 2021	Pierre
	Finalization	March 4-5, 2021	Pierre

DEPARTMENT RECOMMENDATION

Duration of Recommendation: 2022-23 hunting season

Season Dates:

Canada Geese (and Brant)

Unit 1: October 1 – December 16, 2021

Unit 2: October 31, 2022 – February 12, 2023

Unit 3: January 14-22, 2023

Light Geese

Statewide: September 24, 2022 – January 6, 2023

White-fronted Geese

Statewide: September 24 – December 6, 2022

Daily Limits:

Canada geese

Unit 1: 8

Units 2 and 3: 4

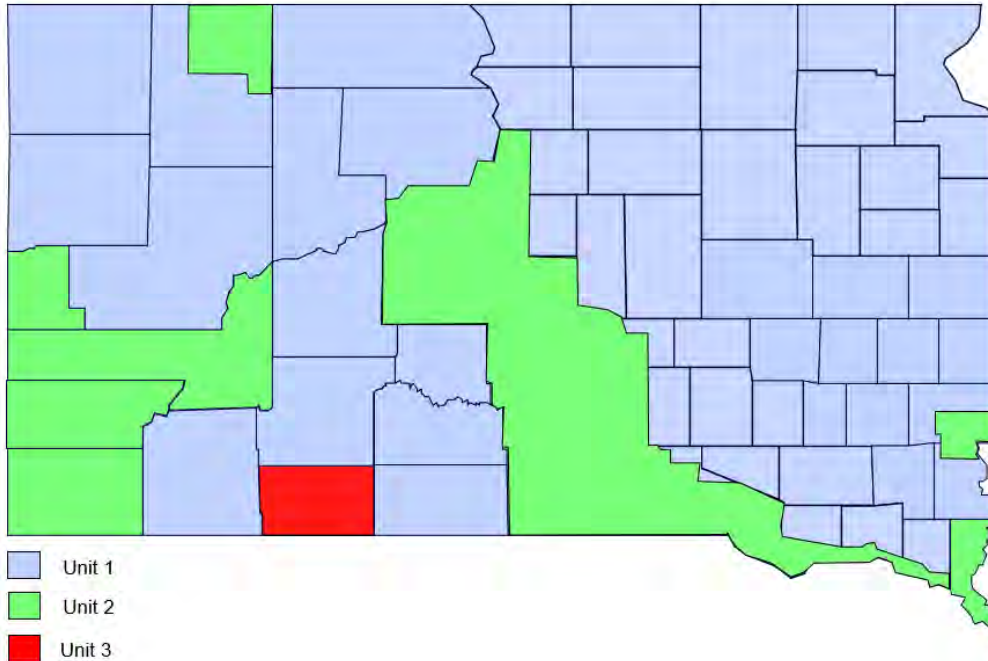
Light geese: 50

White-fronted goose: 3

Possession Limits:

Light geese: Unlimited

All other geese: Three times the daily limit



Recommended changes from last year: None.

APPROVE _____ **MODIFY** _____ **REJECT** _____ **NO ACTION** _____

SUPPORTIVE INFORMATION

Year	Canada Geese			Light Geese (fall season only)			White-fronted Geese		
	Resident Hunters	Nonresident Hunters	Geese Harvested	Resident Hunters	Nonresident Hunters	Geese Harvested	Resident Hunters	Nonresident Hunters	Geese Harvested
2016	9,964	2,104	91,294	3,206	519	45,104	992	275	1,819
2017	9,,762	2,046	83,484	4,159	515	84,744	1,185	295	3,702
2018	8,633	2,428	69,486	3,009	1,013	46,268	1,262	354	2,578
2019	9,264	2,289	84,138	3,,060	883	47,238	1,015	426	2,720
2020	9,264	2,209	100,606	3,415	761	48,972	1,256	238	3,163

RESIDENT/NONRESIDENT CRITERIA

Not applicable; no recommended changes.

RECRUITMENT, RETENTION, REACTIVATION (R3) CRITERIA

Not applicable; no recommended changes.

FISCAL IMPACT

Not applicable; no recommended changes.

APPROVE ____ **MODIFY** ____ **REJECT** ____ **NO ACTION** ____

GAME, FISH AND PARKS COMMISSION ACTION PROPOSAL

Waterfowl Hunting Season – Special Canada Goose Hunting Season Chapter 41:06:16:08

Commission Meeting Dates:	Proposal	March 3-4, 2022	
	Public Hearing	May 5, 2022	Pierre
	Finalization	May 5-6, 2022	Custer State Park
			Custer State Park

DEPARTMENT RECOMMENDATION

Duration of Recommendation: 2022 hunting season

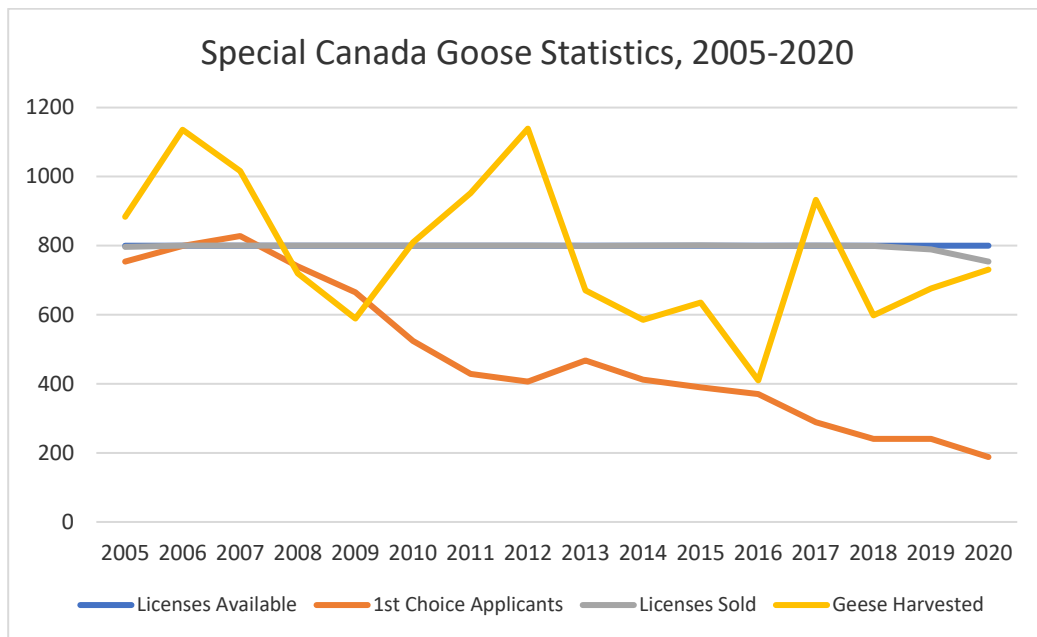
Season Dates: October 15 - December 18, 2022

Open Area: Bennett County (Unit 3)

Licenses: 800 resident licenses (valid for three geese)

Recommended changes from last year: None.

SUPPORTIVE INFORMATION



RESIDENT/NONRESIDENT CRITERIA

Not applicable; no recommended changes.

RECRUITMENT, RETENTION, REACTIVATION (R3) CRITERIA

Not applicable; no recommended changes.

FISCAL IMPACT

Not applicable; no recommended changes.

APPROVE _____	MODIFY _____	REJECT _____	NO ACTION _____
----------------------	---------------------	---------------------	------------------------

**GAME, FISH AND PARKS COMMISSION ACTION
PROPOSAL**

**Common Snipe Hunting Season
Chapter 41:06:17**

Commission Meeting Dates:	Proposal	March 3-4, 2022	Pierre
	Public Hearing	May 5, 2022	Custer State Park
	Finalization	May 5-6, 2022	Custer State Park

DEPARTMENT RECOMMENDATION

Duration of Recommendation: 2022 hunting season

Season Dates: September 1 – October 31, 2022

Open Area: Statewide

Daily Limit: 5 snipe

Possession Limit: 15 snipe

Requirements and Restrictions:

1. Shooting hours are sunrise to sunset.
2. Nontoxic shot rules apply to snipe hunting.

Recommended changes from last year: None.

RESIDENT/NONRESIDENT CRITERIA

Not applicable; no recommended changes.

RECRUITMENT, RETENTION, REACTIVATION (R3) CRITERIA

Not applicable; no recommended changes.

FISCAL IMPACT

Not applicable; no recommended changes.

APPROVE _____	MODIFY _____	REJECT _____	NO ACTION _____
----------------------	---------------------	---------------------	------------------------

GAME, FISH AND PARKS COMMISSION ACTION PROPOSAL

Waterfowl Hunting Season – Tundra Swan Hunting Season

Chapter 41:06:16

Commission Meeting Dates:	Proposal	March 3-4, 2022	Pierre
	Public Hearing	May 5, 2022	Custer State Park
	Finalization	May 5-6, 2022	Custer State Park

DEPARTMENT RECOMMENDATION

Duration of Recommendation: 2022-23 hunting season

Season Dates: October 1, 2022 – January 6, 2023

Open Area: All counties east of the Missouri River except, for Bon Homme, Charles Mix, Clay, Douglas, Hutchinson, Lincoln, Turner, Union, and Yankton counties.

Licenses: 1,100 resident and 200 nonresident single tag licenses

Requirements and Restrictions:

1. Each resident and nonresident hunter may apply for and receive only one permit from the respective resident and nonresident permit pools in the first drawing. Nonresident permits are issued only in conjunction with a prerequisite nonresident waterfowl license and must be applied for at the same time.
2. For the second drawing, if permits remain unsold, only those residents and nonresidents who do not have a permit may submit one application for a permit remaining in the respective resident and nonresident pools.
3. For the third drawing, if any resident or nonresident permits remain unsold, any resident or nonresident may apply for a first or second permit but, in total, may only have up to two permits.
4. Licenses required include all licenses needed for waterfowl hunting.
5. One tag will be issued with each permit and each swan must be tagged immediately upon retrieval.

Recommended changes from last year: None.

SUPPORTIVE INFORMATION

Year	Residents			Nonresidents			Total Swans Harvested
	Licenses Available	1 st Choice Applicants	Licenses Sold	Licenses Available	1 st Choice Applicants	Licenses Sold	
2016	1,100	418	938	200	98	145	82
2017	1,100	303	888	200	108	180	232
2018	1,100	378	973	200	107	216	179
2019	1,100	346	972	200	111	213	214
2020	1,100	403	919	200	137	247	189

RESIDENT/NONRESIDENT CRITERIA

Not applicable; no recommended changes.

RECRUITMENT, RETENTION, REACTIVATION (R3) CRITERIA

Not applicable; no recommended changes.

FISCAL IMPACT

Not applicable; no recommended changes.

APPROVE ____ **MODIFY** ____ **REJECT** ____ **NO ACTION** ____

GAME, FISH AND PARKS COMMISSION ACTION PROPOSAL

Sandhill Crane Hunting Season Chapter 41:06:18

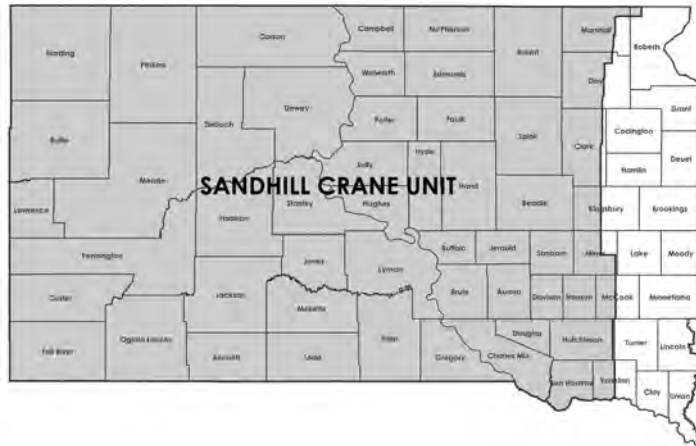
Commission Meeting Dates:	Proposal	March 3-4, 2022	
	Public Hearing	May 5, 2022	Pierre
	Finalization	May 5-6, 2022	Custer State Park
			Custer State Park

DEPARTMENT RECOMMENDATION

Duration of Recommendation: 2022 hunting season

Season Dates: September 24 – November 20, 2022

Open Area: That portion of the state lying west of a line beginning at the South Dakota-North Dakota border and State Highway 25, south on State Highway 25 to its junction with State Highway 34, east on State Highway 34 to its junction with U.S. Highway 81, then south on U.S. Highway 81 to the South Dakota-Nebraska border.



Daily Limit: 3 Sandhill cranes

Possession Limit: 9 Sandhill cranes

Requirements and Restrictions:

1. Shooting hours are ½ hour before sunrise to sunset.
2. Nontoxic shot rules apply to Sandhill crane hunting.

Recommended change from last year: None.

RESIDENT/NONRESIDENT CRITERIA

Not applicable; no recommended changes.

RECRUITMENT, RETENTION, REACTIVATION (R3) CRITERIA

Not applicable; no recommended changes.

FISCAL IMPACT

Not applicable; no recommended changes.

APPROVE _____ **MODIFY** _____ **REJECT** _____ **NO ACTION** _____

GAME, FISH AND PARKS COMMISSION ACTION PROPOSAL

Waterfowl Hunting Seasons Chapter 41:06:16

Commission Meeting Dates:	Proposal	March 3-4, 2022	
	Public Hearing	May 5, 2022	Pierre
	Finalization	May 5-6, 2022	Custer State Park
			Custer State Park

DEPARTMENT RECOMMENDATION

Spring Light Goose Conservation Order.

Duration of Recommendation: 2023 hunting season

Season Dates: February 13 – May 15, 2023

Open Area: Statewide

Daily Limit: None

Possession Limit: None

Requirements and Restrictions:

1. With the exception of items 2-5, requirements and restrictions for the Conservation Order are the same as fall waterfowl hunting seasons.
2. The Federal Migratory Bird Hunting and Conservation stamp is not required.
3. The use of electronic calls is allowed.
4. Shotguns may be capable of holding more than three shells.
5. Shooting hours are ½ hour before sunrise to ½ hour after sunset.

Recommended changes from last year: None.

SUPPORTIVE INFORMATION

Year	Licenses			Geese Harvested	Geese per Hunter
	Resident	Nonresident	Total		
2017	2,672	4,448	7,120	181,460	25.5
2018	2,736	4,643	7,379	166,079	22.5
2019	1,413	2,700	4,113	80,694	19.6
2020	2,078	2,830	4,908	96,846	19.7
2021	1,755	4,446	6,201	128,329	20.7

RESIDENT/NONRESIDENT CRITERIA

Not applicable; no recommended changes.

RECRUITMENT, RETENTION, REACTIVATION (R3) CRITERIA

Not applicable; no recommended changes.

FISCAL IMPACT

Not applicable; no recommended changes.

APPROVE _____ **MODIFY** _____ **REJECT** _____ **NO ACTION** _____

GAME, FISH AND PARKS COMMISSION ADMINISTRATIVE ACTION

Elk Hunting Seasons – Hunting Unit License Allocations

Commission Meeting Dates:	Proposal	January 4-5, 2022	Pierre
	Public Hearing	April 7, 2022	Watertown
	Finalization	April 7-8, 2022	Watertown

LICENSE ALLOCATION BY SEASONS AND UNITS

See Attached Spreadsheet

GAME, FISH AND PARKS COMMISSION ACTION PROPOSAL

License Forms and Fees

Chapters 41:06:02

Commission Meeting Dates:	Proposal	March 3-4, 2022	Pierre
	Public Hearing	May 5, 2022	Custer State Park
	Finalization	May 5-6, 2022	Custer State Park

DEPARTMENT RECOMMENATION

Duration of Recommendation: Beginning with the 2022 season.

Recommended changes from last year:

1. Remove the inclusion of the state migratory bird certification permit with the nonresident spring snow goose, nonresident early fall Canada goose licenses, nonresident 3-day licenses, nonresident youth waterfowl licenses and decrease applicable license fees by \$5 each.

SUPPORTIVE INFORMATION

Currently, several nonresident waterfowl licenses include the migratory bird certification permit. With the 2-tiered duck license option, applicants must select a migratory bird certification permit to reflect their choice of the traditional or 3-duck license option and pay the \$5 fee for the applicable migratory bird certification permit.

DRAFT ADMINISTRATIVE RULE CHANGES

The following are proposed draft changes that are intended to incorporate the recommended changes adopted by the Commission.

41:06:02:03. Hunting license fees. Hunting license fees are as follows:

- (29) Special nonresident waterfowl license, \$110;
- (30) Fall three-consecutive days temporary nonresident waterfowl license, ~~\$80~~ \$75;
- (31) Spring snow goose temporary nonresident license:
 - (A) Eighteen years of age and older, ~~\$44~~ \$39; and
 - (B) Under 18 years of age, ~~\$20~~ \$15;
- (32) Early fall Canada goose temporary nonresident license, ~~\$44~~ \$39;
- (33) Nonresident youth waterfowl season hunting license under 18 years of age, ~~ten~~ five dollars;

RESIDENT/NONRESIDENT CRITERIA

1. The Issue
 - Why make the change, what are the change alternatives, how will public/stakeholder input be solicited, and how will the change be evaluated if implemented?
 - i. With the 2-tiered duck license option, applicants must select a migratory bird certification permit to reflect their choice of the traditional or 3-duck license option and pay the \$5 fee for the applicable migratory bird certification permit.
2. Historical Considerations
 - Not applicable.
3. Biological Considerations
 - What is the current and projected status of the population and habitat conditions for these populations? Not applicable.
4. Social Considerations
 - Simplifies application and license purchase process.
5. Financial considerations
 - Not applicable.

APPROVE _____ **MODIFY** _____ **REJECT** _____ **NO ACTION** _____

RECRUITMENT, RETENTION, REACTIVATION (R3) CRITERIA

1. Does the regulation or fee inhibit a user's ability to participate? No.
2. Does the regulation increase the opportunity for new and existing users? Yes, simplifies application and license purchase process.
3. How does the regulation impact the next generation of hunters, anglers, trappers, and outdoor recreationists? Simplifies application and license purchase process.
4. Does the regulation enhance the quality of life for current and future generations by getting families outdoors? Not applicable.

FISCAL IMPACT

No fiscal impact to license revenue as the license requirements are simply being separated to simplify and accurately reflect the license choice of the applicant.

APPROVE _____ MODIFY _____ REJECT _____ NO ACTION _____

**GAME, FISH AND PARKS COMMISSION ACTION
PROPOSAL**

Application for License
Chapter 41:06:01

Commission Meeting Dates:	Proposal	March 3-4, 2022	Pierre
	Public Hearing	May 5, 2022	Custer State Park
	Finalization	May 5-6, 2022	Custer State Park

DEPARTMENT RECOMMENDATION

Recommended changes from last year:

1. Remove the requirement for unlimited access permits for archery, muzzleloader, mentor, youth, and apprentice deer license holders to hunt certain deer hunting units and public lands.
2. Limit the number of archery access permits for Unit WRD-27L to no more than 20 "any deer" access permits for residents and no more than 5 "any deer" access permits for nonresidents.

SUPPORTIVE INFORMATION

Research on R3 efforts (i.e., Recruitment, Reactivation, Retention) has identified rule/regulation complexity to be one of several obstacles for new sportsmen and women. The removal of these access permits will greatly simplify hunting regulations regarding mentor, archery, muzzleloader, youth, and apprentice deer license holders while having no impact to deer management in these areas. The number of access permits currently available, across all of these seasons, has created unnecessary complexity for sportsmen and women as well as the administration of these access permits in the licensing system.

Unlimited access permits were established with the intent to evaluate harvest and participation on specific management areas by deer hunters with statewide or region-wide (e.g., West River Archery Deer) license types including archery, muzzleloader, mentor, youth, and apprentice license types. Deer harvest and participation was evaluated on all areas that required an access permit in 2019 and results were presented to the Commission. As a result, the Commission took action to limit archery deer access permits to 500 residents and 125 nonresidents on management unit 35L and no other unlimited license types or access permit areas were limited. Since 2019, no changes have been made to the number of access permits available for archery deer hunters in management unit 35L and no further changes have been made to the unlimited access permit areas.

Through the 2021 deer hunting season, hunting effort and harvest success by access permit users has been collected, providing sufficient baseline information regarding use on these areas. Harvest and success by hunters with statewide or region-wide license types will continue to be estimated at the firearm deer management unit level. In the event there is a desire to consider limiting access permits on additional areas and user groups, harvest and success data will be used to evaluate use by user groups on these areas beginning the 2022 deer hunting season.

This change will simplify deer hunting regulations for statewide and region-wide deer license type user groups and reduce complexity of the deer licensing system.

Limited access units (LAUs) are intended to reduce hunter densities and provide a quality hunt experience. Trend data of supports limiting the number of resident and nonresident archery access permits for Unit WRD-27L to help meet its LAU objective. In addition, a reduction in archery deer harvest will help meet the 80% firearm hunter success goal identified in the deer management plan for LAUs.

APPROVE _____	MODIFY _____	REJECT _____	NO ACTION _____
----------------------	---------------------	---------------------	------------------------

Access Permit Survey Archery Deer Harvest Projections Custer National Forest (35L)

Year		Permits Issued	Projected Hunted	Hunter Success	Permit Success	Harvest Projections								Total Deer Harvest
						Whitetail				Mule Deer				
						Bucks		Does		Bucks		Does		
Adult	Fawn	Adult	Fawn	Adult	Fawn	Adult	Fawn	Adult	Fawn					
2014	Resident	262	112	14%	6%	3	0	0	0	13	0	0	0	15
	Nonresident	105	75	28%	20%	2	0	0	0	19	0	0	0	21
2015	Resident	355	176	12%	6%	3	0	0	0	16	0	1	1	21
	Nonresident	102	71	22%	15%	4	0	0	0	12	0	0	0	16
2016	Resident	488	270	13%	7%	8	0	4	1	19	0	1	0	34
	Nonresident	172	134	24%	19%	3	0	0	0	28	0	0	1	32
2017	Resident	497	304	8%	5%	3	0	0	0	20	0	1	0	24
	Nonresident	326	249	21%	16%	6	1	4	0	31	1	7	1	51
2018	Resident	733	337	6%	3%	4	0	0	0	13	0	1	0	19
	Nonresident	415	281	16%	11%	7	0	0	0	36	0	3	0	46
2019	Resident	500	267	8%	4%	3	0	0	0	16	1	0	0	20
	Nonresident	125	103	13%	11%	7	0	0	1	3	0	3	0	13
2020	Resident	497	275	10%	6%	6	0	0	0	19	0	3	0	28
	Nonresident	122	92	34%	26%	12	2	0	0	17	0	2	0	32

Hill Ranch GPA (27L)

Year		Permits Issued	Projected Hunted	Hunter Success	Permit Success	Harvest Projections								Total Deer Harvest
						Whitetail				Mule Deer				
						Bucks		Does		Bucks		Does		
Adult	Fawn	Adult	Fawn	Adult	Fawn	Adult	Fawn	Adult	Fawn					
2014	Resident	126	54	14%	6%	4	0	1	0	2	0	0	0	7
	Nonresident	23	8	29%	10%	2	0	0	0	0	0	0	0	2
2015	Resident	136	61	9%	4%	1	0	4	0	0	0	0	0	5
	Nonresident	33	18	0%	0%	0	0	0	0	0	0	0	0	0
2016	Resident	157	51	6%	2%	3	0	0	0	0	0	0	0	3
	Nonresident	52	24	24%	11%	3	0	0	0	3	0	0	0	6
2017	Resident	149	60	7%	3%	1	1	1	0	0	0	0	0	4
	Nonresident	62	23	5%	2%	0	0	0	0	1	0	0	0	1
2018	Resident	229	62	2%	1%	0	0	1	0	0	0	0	0	1
	Nonresident	82	31	8%	3%	1	0	0	0	1	0	0	0	2
2019	Resident	171	42	11%	3%	2	0	0	0	2	2	0	0	5
	Nonresident	64	20	7%	2%	1	0	0	0	0	0	0	0	1
2020	Resident	186	69	15%	6%	2	0	3	3	2	0	0	0	10
	Nonresident	24	15	50%	31%	5	0	2	0	2	0	0	0	8

APPROVE _____ MODIFY _____ REJECT _____ NO ACTION _____

Access Permit Survey Archery Deer Harvest Projections

Little Moreau GPA (24B)

Year		Permits Issued	Projected Hunted	Hunter Success	Permit Success	Harvest Projections								Total Deer Harvest
						Whitetail				Mule Deer				
						Bucks		Does		Bucks		Does		
Adult	Fawn	Adult	Fawn	Adult	Fawn	Adult	Fawn	Adult	Fawn					
2014	Resident	82	17	7%	1%	1	0	0	0	0	0	0	0	1
	Nonresident	15	6	40%	15%	0	0	1	1	0	0	0	0	2
2015	Resident	95	23	26%	6%	2	0	4	0	0	0	0	0	6
	Nonresident	22	12	11%	6%	1	0	0	0	0	0	0	0	1
2016	Resident	118	30	14%	4%	1	0	1	1	0	0	0	0	4
	Nonresident	28	4	33%	5%	0	0	1	0	0	0	0	0	1
2017	Resident	113	29	17%	4%	2	0	2	0	0	0	0	0	5
	Nonresident	47	9	38%	7%	3	0	0	0	0	0	0	0	3
2018	Resident	142	30	9%	2%	1	0	1	0	0	0	0	0	3
	Nonresident	59	4	0%	0%	0	0	0	0	0	0	0	0	0
2019	Resident	103	34	13%	4%	1	0	1	1	0	0	0	0	4
	Nonresident	41	3	0%	0%	0	0	0	0	0	0	0	0	0
2020	Resident	96	30	18%	5%	2	0	3	0	0	0	0	0	5
	Nonresident	5	3	0%	0%	0	0	0	0	0	0	0	0	0

Brule County certain GPA/Corps (13L)

Year		Permits Issued	Projected Hunted	Hunter Success	Permit Success	Harvest Projections								Total Deer Harvest
						Whitetail				Mule Deer				
						Bucks		Does		Bucks		Does		
Adult	Fawn	Adult	Fawn	Adult	Fawn	Adult	Fawn	Adult	Fawn					
2017	Resident	112	15	17%	2%	0	0	0	0	2	0	0	0	2
	Nonresident	44	0		0%	0	0	0	0	0	0	0	0	0
2018	Resident	181	24	6%	1%	0	0	1	0	0	0	0	0	1
	Nonresident	66	14	0%	0%	0	0	0	0	0	0	0	0	0
2019	Resident	155	38	8%	2%	3	0	0	0	0	0	0	0	3
	Nonresident	54	5	0%	0%	0	0	0	0	0	0	0	0	0
2020	Resident	149	37	9%	2%	3	0	0	0	0	0	0	0	3
	Nonresident	13	4	50%	17%	2	0	0	0	0	0	0	0	2

Black Hills Unit (BH1)

Year		Permits Issued	Projected Hunted	Hunter Success	Permit Success	Harvest Projections								Total Deer Harvest
						Whitetail				Mule Deer				
						Bucks		Does		Bucks		Does		
Adult	Fawn	Adult	Fawn	Adult	Fawn	Adult	Fawn	Adult	Fawn					
2016*	Resident	NA	NA	NA	NA	384	31	215	11	83	0	15	5	744
	Nonresident	NA	NA	NA	NA	76	4	39	3	49	0	7	0	177
2017*	Resident	NA	NA	NA	NA	440	12	248	17	82	0	22	0	822
	Nonresident	NA	NA	NA	NA	101	3	51	3	34	0	13	0	203
2018	Resident	2,182	1,338	34%	21%	235	13	138	8	58	0	7	0	459
	Nonresident	277	125	37%	17%	37	0	1	0	4	0	3	0	46
2019	Resident	1,419	913	29%	19%	140	13	90	6	15	0	3	1	268
	Nonresident	160	66	46%	19%	15	0	9	0	7	0	0	0	30
2020	Resident	1,171	733	45%	28%	166	5	117	6	27	0	6	0	328
	Nonresident	74	33	74%	33%	10	0	10	0	2	0	2	0	24

*Prior to 2018 harvest numbers are from the regular archery survey

APPROVE _____ MODIFY _____ REJECT _____ NO ACTION _____

Access Permit Muzzleloader Deer Harvest Projections

Custer National Forest (35L)

Year	Permits Issued		Sold	Projected Hunted	Hunter Success	Permit Success	Harvest Projections								Total Deer Harvest
							Whitetail				Mule Deer				
	Resident	Nonresident					Bucks		Does		Bucks		Does		
	Adult	Fawn	Adult	Fawn	Adult	Fawn	Adult	Fawn	Adult	Fawn	Adult	Fawn	Adult	Fawn	
2014	27	0	27	14	25%	13%	0	0	0	0	4	0	0	0	4
2015	57	0	57	24	25%	11%	0	0	0	0	6	0	0	0	6
2016	58	0	58	26	32%	14%	1	0	1	0	6	0	0	0	8
2017	70	0	70	34	23%	11%	2	0	0	0	6	0	0	0	8
2018	72	0	72	40	19%	10%	0	0	0	0	7	0	0	0	7
2019	100	0	100	40	39%	15%	1	0	0	0	13	0	1	0	15
2020	141	0	141	60	41%	17%	3	0	0	0	22	0	0	0	25

Hill Ranch GPA (27L)

Year	Permits Issued		Sold	Projected Hunted	Hunter Success	Permit Success	Harvest Projections								Total Deer Harvest
							Whitetail				Mule Deer				
	Resident	Nonresident					Bucks		Does		Bucks		Does		
	Adult	Fawn	Adult	Fawn	Adult	Fawn	Adult	Fawn	Adult	Fawn	Adult	Fawn	Adult	Fawn	
2014	19	0	19	7	33%	12%	0	0	0	0	1	0	1	0	2
2015	31	0	31	10	0%	0%	0	0	0	0	0	0	0	0	0
2016	38	0	38	15	23%	9%	4	0	0	0	0	0	0	0	4
2017	38	0	38	10	20%	5%	1	0	0	0	1	0	0	0	2
2018	17	0	17	4	0%	0%	0	0	0	0	0	0	0	0	0
2019	18	0	18	5	25%	7%	1	0	0	0	0	0	0	0	1
2020	44	0	44	8	17%	3%	0	0	0	1	0	0	0	0	1

Little Moreau GPA (24B)

Year	Permits Issued		Sold	Projected Hunted	Hunter Success	Permit Success	Harvest Projections								Total Deer Harvest
							Whitetail				Mule Deer				
	Resident	Nonresident					Bucks		Does		Bucks		Does		
	Adult	Fawn	Adult	Fawn	Adult	Fawn	Adult	Fawn	Adult	Fawn	Adult	Fawn	Adult	Fawn	
2014	27	3	30	12	18%	7%	0	0	2	0	0	0	0	0	2
2015	43	2	45	18	25%	10%	0	2	2	0	0	0	0	0	4
2016	54	9	63	16	43%	11%	1	1	3	1	0	0	0	0	7
2017	42	9	51	22	32%	16%	0	0	7	0	0	1	0	0	8
2018	47	8	55	23	19%	8%	1	1	1	0	0	0	0	0	4
2019	36	5	41	11	43%	12%	0	2	2	2	0	0	0	0	5
2020	31	2	33	8	50%	12%	1	1	1	0	0	0	0	0	4

Brule County certain GPA/Corps (13L)

Year	Permits Issued		Sold	Projected Hunted	Hunter Success	Permit Success	Harvest Projections								Total Deer Harvest
							Whitetail				Mule Deer				
	Resident	Nonresident					Bucks		Does		Bucks		Does		
	Adult	Fawn	Adult	Fawn	Adult	Fawn	Adult	Fawn	Adult	Fawn	Adult	Fawn	Adult	Fawn	
2017	32	0	32	2	50%	3%	0	0	0	1	0	0	0	0	1
2018	20	0	20	4	0%	0%	0	0	0	0	0	0	0	0	0
2019	22	0	22	6	25%	6%	0	0	0	0	0	0	1	0	1
2020	44	0	44	5	0%	0%	0	0	0	0	0	0	0	0	0

Black Hills Unit Harvest

Year	Permits Issued		Sold	Projected Hunted	Hunter Success	Permit Success	Harvest Projections								Total Deer Harvest
							Whitetail				Mule Deer				
	Resident	Nonresident					Bucks		Does		Bucks		Does		
	Adult	Fawn	Adult	Fawn	Adult	Fawn	Adult	Fawn	Adult	Fawn	Adult	Fawn	Adult	Fawn	
2014	NA	NA	NA	NA	NA	NA	24	0	16	3	12	0	0	0	54
2015	NA	NA	NA	NA	NA	NA	17	0	5	3	16	0	3	0	44
2016	NA	NA	NA	NA	NA	NA	38	28	174	27	8	1	0	0	275
2017	NA	NA	NA	NA	NA	NA	32	20	250	30	14	0	1	0	346
2018	NA	NA	NA	NA	NA	NA	17	23	259	24	16	0	0	0	339
2019	NA	NA	NA	NA	NA	NA	20	14	172	9	8	0	2	0	226
2020	NA	NA	NA	NA	NA	NA	18	28	169	14	11	1	0	0	241

APPROVE _____ MODIFY _____ REJECT _____ NO ACTION _____

Access Permit Youth/Apprentice Deer Harvest Projections Custer National Forest (35L)

Year	Permits Issued			Projected Sold	Hunted	Hunter Success	Permit Success	Harvest Projections								Total Deer Harvest
								Whitetail				Mule Deer				
	Resident	Nonresident			Bucks	Does	Bucks	Does	Adult	Fawn	Adult	Fawn	Adult	Fawn		
					Adult	Fawn	Adult	Fawn	Adult	Fawn	Adult	Fawn	Adult	Fawn		
2014	20	6	26	9	25%	9%	0	0	0	0	2	0	0	2		
2015	15	2	17	5	25%	8%	0	0	0	0	0	1	0	1		
2016	28	4	32	6	75%	13%	0	0	0	0	3	1	4			
2017	19	4	23	10	44%	20%	0	1	0	1	2	0	5			
2018	27	9	36	10	38%	10%	0	0	0	1	2	0	4			
2019	20	7	27	11	67%	26%	0	0	0	0	4	4	7			
2020	23	10	33	8	60%	15%	0	2	0	0	2	2	5			

Hill Ranch GPA (27L)

Year	Permits Issued			Projected Sold	Hunted	Hunter Success	Permit Success	Harvest Projections								Total Deer Harvest
								Whitetail				Mule Deer				
	Resident	Nonresident			Bucks	Does	Bucks	Does	Adult	Fawn	Adult	Fawn	Adult	Fawn		
					Adult	Fawn	Adult	Fawn	Adult	Fawn	Adult	Fawn	Adult	Fawn		
2014	17	6	23	12	29%	15%	0	2	2	0	0	0	0	4		
2015	10	2	12	5	25%	10%	1	0	0	0	0	0	1			
2016	17	2	19	5	0%	0%	0	0	0	0	0	0	0			
2017	11	1	12	7	40%	22%	0	0	1	1	0	0	3			
2018	24	0	24	4	0%	0%	0	0	0	0	0	0	0			
2019	14	2	16	6	40%	15%	0	1	1	0	0	0	2			
2020	18	1	19	4	50%	10%	0	2	0	0	0	0	2			

Little Moreau GPA (24B)

Year	Permits Issued			Projected Sold	Hunted	Hunter Success	Permit Success	Harvest Projections								Total Deer Harvest
								Whitetail				Mule Deer				
	Resident	Nonresident			Bucks	Does	Bucks	Does	Adult	Fawn	Adult	Fawn	Adult	Fawn		
					Adult	Fawn	Adult	Fawn	Adult	Fawn	Adult	Fawn	Adult	Fawn		
2014	13	3	16	5	0%	0%	0	0	0	0	0	0	0	0		
2015	7	3	10	4	67%	25%	0	3	0	0	0	0	3			
2016	16	1	17	9	38%	20%	1	1	0	0	0	1	3			
2017	7	3	10	6	33%	20%	0	2	0	0	0	0	2			
2018	17	2	19	6	17%	6%	0	1	0	0	0	0	1			
2019	6	1	7	5	33%	25%	2	0	0	0	0	0	2			
2020	8	1	9	3	100%	33%	3	0	0	0	0	0	3			

Brule County certain GPA/Corps (13L)

Year	Permits Issued			Projected Sold	Hunted	Hunter Success	Permit Success	Harvest Projections								Total Deer Harvest
								Whitetail				Mule Deer				
	Resident	Nonresident			Bucks	Does	Bucks	Does	Adult	Fawn	Adult	Fawn	Adult	Fawn		
					Adult	Fawn	Adult	Fawn	Adult	Fawn	Adult	Fawn	Adult	Fawn		
2017	12	0	12	4	50%	18%	0	1	0	1	0	0	2			
2018	24	0	24	1	0%	0%	0	0	0	0	0	0	0			
2019	14	1	15	5	0%	0%	0	0	0	0	0	0	0			
2020	20	1	21	5	50%	11%	0	2	0	0	0	0	2			

Black Hills Unit Harvest

Year	Permits Issued			Projected Sold	Hunted	Hunter Success	Permit Success	Harvest Projections								Total Deer Harvest
								Whitetail				Mule Deer				
	Resident	Nonresident			Bucks	Does	Bucks	Does	Adult	Fawn	Adult	Fawn	Adult	Fawn		
					Adult	Fawn	Adult	Fawn	Adult	Fawn	Adult	Fawn	Adult	Fawn		
2014	NA	NA	NA	NA	NA	NA	25	174	18	0	32	0	250			
2015	NA	NA	NA	NA	NA	NA	29	204	34	4	38	2	311			
2016	NA	NA	NA	NA	NA	NA	37	289	26	3	33	4	392			
2017	NA	NA	NA	NA	NA	NA	28	273	35	3	47	1	388			
2018	NA	NA	NA	NA	NA	NA	21	297	23	5	35	8	389			
2019	NA	NA	NA	NA	NA	NA	30	192	22	3	28	0	275			
2020	NA	NA	NA	NA	NA	NA	25	288	31	0	51	2	397			

APPROVE _____ MODIFY _____ REJECT _____ NO ACTION _____

Access Permit Mentored Youth Deer Harvest Projections

Custer National Forest (35L)

Year	Permits Issued		Sold	Projected Hunted	Hunter Success	Permit Success	Harvest Projections								Total Deer Harvest
	Resident	Nonresident					Whitetail				Mule Deer				
							Bucks		Does		Bucks		Does		
	Adult	Fawn					Adult	Fawn	Adult	Fawn	Adult	Fawn			
2014	11	0	11	4	67%	25%	0	0	0	0	0	3	0	3	
2015	10	0	10	3	50%	17%	0	0	2	0	0	0	0	2	
2016	23	0	23	3	50%	6%	0	0	0	0	1	0	0	1	
2017	14	0	14	1	0%	0%	0	0	0	0	0	0	0	0	
2018	30	0	30	4	0%	0%	0	0	0	0	0	0	0	0	
2019	37	0	37	4	0%	0%	0	0	0	0	0	0	0	0	
2020	17	0	17	3	33%	6%	0	0	0	0	1	0	0	1	

Hill Ranch GPA (27L)

Year	Permits Issued		Sold	Projected Hunted	Hunter Success	Permit Success	Harvest Projections								Total Deer Harvest
	Resident	Nonresident					Whitetail				Mule Deer				
							Bucks		Does		Bucks		Does		
	Adult	Fawn					Adult	Fawn	Adult	Fawn	Adult	Fawn			
2014	7	0	7	1	0%	0%	0	0	0	0	0	0	0	0	
2015	7	0	7	2	50%	14%	0	0	0	1	0	0	0	1	
2016	11	0	11	3	50%	14%	0	2	0	0	0	0	0	2	
2017	6	0	6	2	100%	33%	1	1	0	0	0	0	0	2	
2018	18	0	18	6	100%	31%	1	4	0	0	0	0	0	6	
2019	25	0	25	11	13%	6%	0	0	0	0	1	0	0	1	
2020	21	0	21	6	100%	31%	0	6	0	0	0	0	0	6	

Little Moreau GPA (24B)

Year	Permits Issued		Sold	Projected Hunted	Hunter Success	Permit Success	Harvest Projections								Total Deer Harvest
	Resident	Nonresident					Whitetail				Mule Deer				
							Bucks		Does		Bucks		Does		
	Adult	Fawn					Adult	Fawn	Adult	Fawn	Adult	Fawn			
2014	5	0	5	3	100%	50%	0	1	1	0	0	0	0	3	
2015	3	0	3	2	50%	33%	1	0	0	0	0	0	0	1	
2016	7	0	7	0	0%	0%	0	0	0	0	0	0	0	0	
2017	7	0	7	1	0%	0%	0	0	0	0	0	0	0	0	
2018	6	0	6	0	0%	0%	0	0	0	0	0	0	0	0	
2019	8	0	8	0	0%	0%	0	0	0	0	0	0	0	0	
2020	5	0	5	3	0%	0%	0	0	0	0	0	0	0	0	

Brule County certain GPA/Corps (13L)

Year	Permits Issued		Sold	Projected Hunted	Hunter Success	Permit Success	Harvest Projections								Total Deer Harvest
	Resident	Nonresident					Whitetail				Mule Deer				
							Bucks		Does		Bucks		Does		
	Adult	Fawn					Adult	Fawn	Adult	Fawn	Adult	Fawn			
2017	9	0	9	3	0%	0%	0	0	0	0	0	0	0	0	
2018	25	0	25	6	40%	9%	0	1	0	0	0	0	1	2	
2019	25	0	25	6	25%	6%	0	0	0	1	0	0	0	1	
2020	15	0	15	1	0%	0%	0	0	0	0	0	0	0	0	

Black Hills Unit Harvest

Year	Permits Issued		Sold	Projected Hunted	Hunter Success	Permit Success	Harvest Projections								Total Deer Harvest
	Resident	Nonresident					Whitetail				Mule Deer				
							Bucks		Does		Bucks		Does		
	Adult	Fawn					Adult	Fawn	Adult	Fawn	Adult	Fawn			
2014	NA	NA	NA	NA	NA	NA	15	106	38	1	20	6	187		
2015	NA	NA	NA	NA	NA	NA	12	129	21	1	25	0	188		
2016	NA	NA	NA	NA	NA	NA	32	149	23	4	21	1	230		
2017	NA	NA	NA	NA	NA	NA	29	195	27	4	38	4	297		
2018	NA	NA	NA	NA	NA	NA	26	240	34	2	24	0	326		
2019	NA	NA	NA	NA	NA	NA	31	200	34	2	25	1	293		
2020	NA	NA	NA	NA	NA	NA	31	236	48	6	17	0	338		

APPROVE _____ MODIFY _____ REJECT _____ NO ACTION _____

DRAFT ADMINISTRATIVE RULE CHANGES

The following are proposed draft changes that are intended to incorporate the recommended changes adopted by the Commission.

41:06:01:17. Access permits required for specific deer hunting units and public lands. Any resident or nonresident deer hunter possessing an archery, muzzleloader, apprentice hunter, youth, or mentor deer license shall obtain and possess a free limited access permit to hunt certain hunting units or public lands described in § 41:06:22:01. West River deer units 24B, 27L, 35L, and East River deer unit 13L. Any resident or nonresident deer hunter possessing an archery deer license shall obtain and possess a free access permit in order to hunt Newton Hills State Park or in the Black Hills as defined in § 41:06:19:02. Unlimited access permits may be issued for each management unit and each free access permit shall be unit specific.

41:06:22:01. Archery deer hunting season established -- Number and type of licenses -- Access permits. The archery deer hunting season is open statewide from one-half hour before sunrise to one-half hour after sunset each day beginning September 1 through January 1, except as otherwise provided in § 41:06:22:02. Unlimited "any deer" licenses may be issued for units ARD-ST1, ARD-ER1, and ARD-WR1 and unlimited antlerless whitetail deer licenses may be issued for unit ARD-LM1. One thousand single-tag "any antlerless deer" licenses may be issued for use in ARD-MP1, ARD-MP2 and ARD-MP3. No more than ten "any deer" and 50 antlerless whitetail deer access permits may be issued to residents for Adams Homestead and Nature Preserve. No more than ten "any deer" and 25 "antlerless whitetail deer" access permits may be issued to residents for Good Earth State Park. No more than 500 "any deer" access permits may be issued to residents and no more than 125 "any deer" access permits may be issued to nonresidents for unit WRD-35L described in § 41:06:20:02. No more than 20 "any deer" access permits may be issued to residents and no more than 5 "any deer" access permits may be issued to nonresidents for unit WRD-27L described in § 41:06:20:02.

RESIDENT/NONRESIDENT CRITERIA

1. The Issue
 - Unlimited access permits were originally used to monitor deer hunter numbers and success on specific management units. Adequate data have been obtained to evaluate hunter numbers and harvest on these areas, and future monitoring can be obtained via harvest estimates and success without the need for unlimited access permits.
2. Historical Considerations
 - Data regarding unlimited access permit use and harvest success were evaluated in 2019 and changes were made to limit archery hunters in deer management unit 35L.
3. Biological Considerations
 - Harvest estimates at the firearm deer management unit will continue to be estimated by deer hunters with statewide and region-wide license types and these data are used to evaluate biological impact of harvest to the deer population.
4. Social Considerations
 - Hunter density and harvest by hunters with statewide and region-wide license types will continue to be monitored to estimate and evaluate social considerations, such as perceived hunter density and crowding.
5. Financial considerations
 - Access permits are available at no cost, so there is no financial consideration.

RECRUITMENT, RETENTION, REACTIVATION (R3) CRITERIA

1. Does the regulation or fee inhibit a user's ability to participate? No.
2. Does the regulation increase the opportunity for new and existing users?
 - No, the access permits were free and unlimited, so the removal of these permits will have no effect on opportunity.
3. How does the regulation impact the next generation of hunters, anglers, trappers, and outdoor recreationists?
 - The regulation will simplify hunting requirements for deer hunter license types including archery, muzzleloader, mentor, youth, and apprentice.
4. Does the regulation enhance the quality of life for current and future generations by getting families outdoors? Not applicable.

FISCAL IMPACT

No fiscal impact as all access permits are issued free of charge.

APPROVE _____ MODIFY _____ REJECT _____ NO ACTION _____

GAME, FISH AND PARKS COMMISSION ACTION PROPOSAL

Black Hills Elk Hunting Season

Chapter 41:06:26

Commission Meeting Dates:	Proposal	January 4-5, 2022	Pierre
	Public Hearing	April 7, 2022	Watertown
	Finalization	April 7-8, 2022	Watertown

COMMISSION PROPOSAL

Duration of Proposal: 2022 and 2023 hunting seasons.

Season Dates:

Units	2022 Hunting Season Dates	2023 Hunting Season Dates
Any Elk Units	October 1 -31	October 1 -31
Antlerless Elk Units: H1B, H4B, H7B, and H9B	October 15-31 AND December 1-16	October 15-31 AND December 1-16
Antlerless Elk Units: H2B, H2E, H2H, H3B, and H3E	October 15-31	October 15-31
Antlerless Elk Units: H2C, H2F, H2I, H3C, and H3F	December 1-16	December 1-16
Antlerless Elk Units: H2D, H2G, H2J, H2D, and H3G	December 17-31	December 17-31

Open Area: See attached maps.

Licenses: 535 "any elk" and 730 "antlerless elk" licenses (total of 1,265 licenses)

Requirements and Restrictions:

1. No person may possess more than one (1) elk license of any type in a year.
2. No more than two persons may submit applications together.
3. Except for landowner/operator preference applicants, no person who receives a license in the first drawing for this season shall be eligible to apply for a Black Hills elk license in first drawings for the next 9 years.
4. One-half of the licenses allocated in each unit are available for landowner/operator preference. One member of each qualifying landowner/operator household may apply every year.
5. Any elk that is harvested must be inspected by a Department representative within 24 hours after kill.

Proposed changes from last year:

1. Adjust the total number of available licenses from 425 "any elk" and 700 "antlerless elk" licenses (total of 1,125 licenses) to no more than 600 "any elk" and 1,200 "antlerless elk" licenses (total of 1,800 licenses).
2. Modify the boundaries of BHE-H9A and BHE-H9B to correct unit boundary.

DEPARTMENT RECOMMENDATION

Recommended changes from proposal:

1. Establish hunting Unit BHE-H4B (administrative rule cleanup).

SUPPORTIVE INFORMATION

The proposed maximum number of elk licenses will be established in administrative rule and the GFP Commission via administrative action will determine specific number of licenses by tag types and allocation amongst hunting units.

Updated population objectives and the recommended number of licenses will be shared at the March Commission meeting once preliminary harvest estimates have been obtained and population modeling exercises have been completed.

There is currently a small geographic area that technically does not reside in any elk hunting unit; this unit boundary modification will correct this oversight. In addition, Unit BHE-4HB was inadvertently excluded as a hunting unit in administrative rule.

APPROVE _____	MODIFY _____	REJECT _____	NO ACTION _____
----------------------	---------------------	---------------------	------------------------

Year	Licensed Hunters	Hunter Success	Bulls Harvested	Cows Harvested	Total Harvest
2017	1,581	66%	366	684	1,050
2018	1,124	64%	315	402	717
2019	1,108	62%	332	354	686
2020	926	63%	360	224	584
2021	954	66%	382	250	632

2021	"Any Elk"					"Antlerless Elk" (All Units Combined)				
Unit	Appl.1st Choice	Licensed Hunters	Harvest Success	Bulls Harvested	Cows Harvested	Appl.1st Choice	Licensed Hunters	Harvest Success	Bulls Harvested	Cows Harvested
H1	1,317	49	84%	35	6	40	15	82%	0	13
H2	8,500	241	91%	213	6	397	113	67%	5	71
H3	1,727	100	82%	80	2	102	273	44%	2	117
H4	83	20	70%	14	0	8	44	23%	0	10
H5	67	5	60%	3	0	NA	NA	NA	NA	NA
H7	343	20	95%	17	2	16	15	53%	0	8
H9	53	14	93%	11	2	3	45	40%	3	15

*2021 preliminary harvest data

DRAFT ADMINISTRATIVE RULE CHANGES

The following are proposed draft changes that are intended to incorporate the recommended changes adopted by the Commission.

41:06:26:01. Black Hills elk hunting season established -- Number and type of licenses -- Season dates. The Black Hills elk hunting season is open from one-half hour before sunrise to one-half hour after sunset each day of the season. No more than ~~450~~ 600 "any elk" licenses and ~~490~~ 1,200 "antlerless elk" licenses may be issued for the Black Hills elk hunting seasons are as follows:

- (1) Units BHE-H1A, BHE-H2A, BHE-H3A, BHE-H4A, BHE-H5A, and BHE-H7A are open from October 1 through October 31;
- (2) Units BHE-H1B, BHE-H2B, BHE-H2E, BHE-H4B, BHE-H7B, and BHE-H9B are open from October 15 through October 31 and from December 1 through December 16;
- (3) Units BHE-H2H, BHE-H3B, and BHE-H3E are open from October 15 through October 31;
- (4) Units BHE-H2C, BHE-H2F, BHE-H2I, BHE-H3C, and BHE-H3F are open from December 1 through December 16; and
- (5) Units BHE-H2D, BHE-H2G, BHE-H2J, BHE-H3D, and BHE-H3G are open from December 17 through December 31.

41:06:26:02. Open units. The following is a description of the open units for the Black Hills elk hunting season:

- (9) Units BHE-H4A and BHE-H4B: those portions of Custer, Fall River, and Pennington Counties beginning at the junction of U.S. Highway 385 and the south boundary of Wind Cave National Park, then southerly along U.S. Highway 385 through Hot Springs and Maverick Junction to its junction with the Cheyenne River, then northeasterly along the Cheyenne River to its junction with Fall River County Road 6291 (South Buffalo Gap Road), then northerly along Fall River County Road 6291 to its junction with Custer County Road 101, then northerly along Custer County Road 101 to its

APPROVE _____ MODIFY _____ REJECT _____ NO ACTION _____

junction with Custer County Road 656 (River Side Road) at Buffalo Gap, then easterly along Custer County Road 656 one-half mile to its junction with Custer County Road 17 (Beaver Valley Road), then northerly and easterly along Custer County Road 17 to its junction with Custer County Road 719 (South Fairburn Road), then northerly along Custer County Road 719 to its junction with Custer County Road 18 at Fairburn, then northerly along Custer County Road 18 to its junction with State Highway 79, then northerly along State Highway 79 to its junction with State Highway 40, then northwesterly along State Highway 40 to its junction with Pennington County Road 330 (Playhouse Road), then southerly along Pennington County Road 330 to its junction with U.S. Highway 16A, then southerly along U.S. Highway 16 to its junction with the north boundary of Custer State Park, then easterly along the Custer State Park boundary to its junction with the northeast corner of Custer State Park, then southerly along the east Custer State Park boundary and Wind Cave National Park boundary to the southeast corner of Wind Cave National Park, then westerly along the south boundary of Wind Cave National Park to its junction with U.S. Highway 385, the point of beginning;

(12) Units BHE-H9A and BHE-H9B: those portions of Custer and Pennington Counties within an area bounded as follows: beginning at the junction of State Highway 40 and State Highway 79 at Hermosa, then northerly along State Highway 79 to its junction with State Highway 44 in Rapid City, then westerly along State Highway 44 to its junction with ~~U.S. Highway 16~~ the Black Hills National Forest boundary, then ~~westerly~~ southerly along ~~U.S. Highway 16~~ the Black Hills National forest boundary to its junction with the South Rockerville Road, then southerly along the South Rockerville Road to its junction with State Highway 40, then easterly along State Highway 40 to its junction with State Highway 79 at Hermosa, the point of beginning.

RESIDENT/NONRESIDENT CRITERIA

Not applicable.

RECRUITMENT, RETENTION, REACTIVATION (R3) CRITERIA

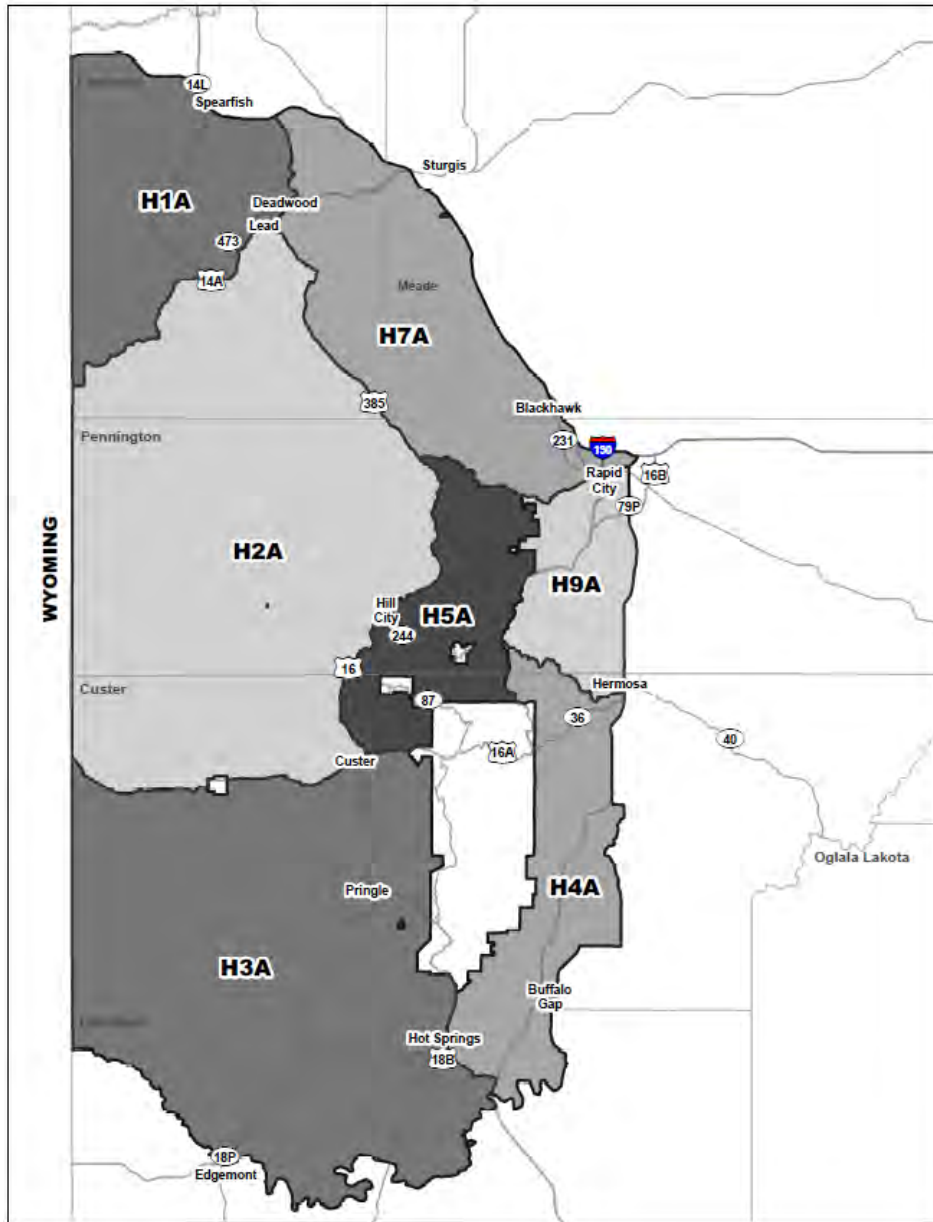
1. Does the regulation or fee inhibit a user's ability to participate? Not applicable.
2. Does the regulation increase the opportunity for new and existing users? Not applicable.
3. How does the regulation impact the next generation of hunters, anglers, trappers, and outdoor recreationists? Not applicable.
4. Does the regulation enhance the quality of life for current and future generations by getting families outdoors? Not applicable.

FISCAL IMPACT

Not applicable.

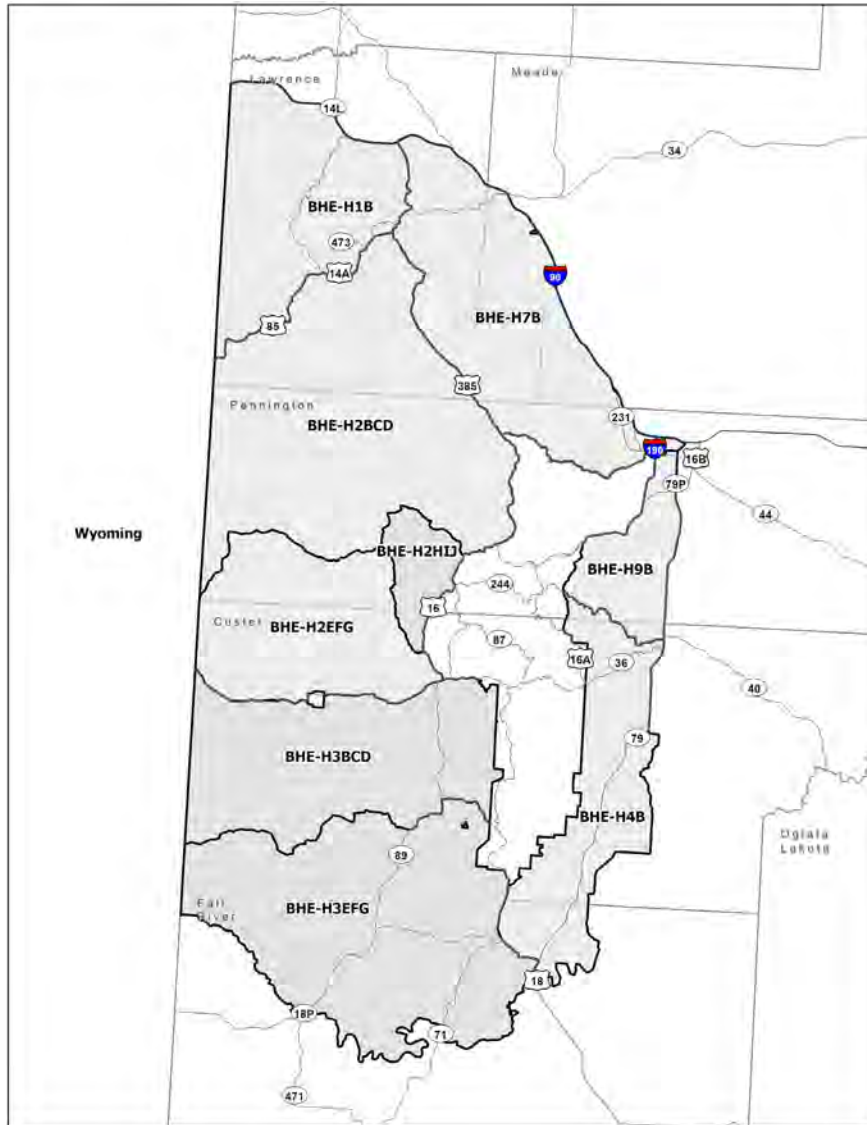
APPROVE _____ MODIFY _____ REJECT _____ NO ACTION _____

BLACK HILLS “ANY” ELK UNITS



2022-2023	
Unit	Any Elk
H1A	60
H2A	290
H3A	120
H4A	20
H5A	5
H7A	25
H9A	15
TOTAL	535

BLACK HILLS “ANTLERLESS” ELK UNITS



2022-2023	
Unit	"Antlerless" Elk Licenses
H1A	
H1B	65
H2A	
H2B	50
H2C	50
H2D	
H2E	40
H2F	40
H2G	40
H2H	10
H2I	10
H2J	10
H3A	
H3B	45
H3C	45
H3D	45
H3E	60
H3F	60
H3G	60
H4A	
H4B	40
H5A	
H7A	
H7B	20
H9A	
H9B	40
TOTAL	730

GAME, FISH, AND PARKS COMMISSION ACTION PROPOSAL

Custer State Park Elk Hunting Season (Any Elk) Chapter 41:06:27

Commission Meeting Dates:	Proposal	January 4-5, 2022	Pierre
	Public Hearing	April 7, 2022	Watertown
	Finalization	April 7-8, 2022	Watertown

COMMISSION PROPOSAL

Duration of Proposal: 2022 and 2023 hunting seasons.

Season Dates: October 1-31, 2022
October 1-31, 2023

Licenses: 12 resident "Any Elk" licenses

Requirements and Restrictions:

1. The unit is open within the boundaries of Custer State Park.
2. Any elk that is harvested must be inspected by a Department representative within 24 hours after kill.

Proposed changes from last year:

1. Adjust the total number of available licenses from 9 "any elk" licenses to no more than 20 "any elk" licenses.
2. Administrative rule clean-up for season dates.

SUPPORTIVE INFORMATION

The proposed maximum number of elk licenses will be established in administrative rule and the GFP Commission via administrative action will determine specific number of licenses by tag types and allocation amongst hunting units.

Updated population objectives and the recommended number of licenses will be shared at the March Commission meeting once preliminary harvest estimates have been obtained and population modeling exercises have been completed.

Of the 12 any elk licenses issued for Custer State Park, 11 will be valid specifically for Custer State Park and the twelve any elk license will be made available to a non-governmental organization as a raffle license that is valid in Custer State Park and any Black Hills elk hunting unit in which an any elk license is issued.

Year	Licenses	Applicants	Success Rate
2011	11	12,060	91%
2012	4	11,133	100%
2013	4	12,888	100%
2014	4	11,762	100%
2015	8	9,136	100%
2016	9	8,951	89%
2017	9	8,828	89%
2018	9	8,670	89%
2019	9	8,949	89%
2020	9	9,385	89%
2021	9	9,215	100%

APPROVE _____	MODIFY _____	REJECT _____	NO ACTION _____
----------------------	---------------------	---------------------	------------------------

DRAFT ADMINISTRATIVE RULE CHANGES

The following are proposed draft changes that are intended to incorporate the recommended changes adopted by the Commission.

41:06:27:01. Custer State Park elk hunting season established -- Number and type of licenses -- Season dates. The Custer State Park elk hunting season is open from one-half hour before sunrise to one-half hour after sunset each day of the season and is restricted by chapter 41:06:07. No more than ~~nine~~ 20 "any elk" licenses may be issued for the Custer State Park elk hunting season. The Custer State Park elk hunting season for Unit CUE-CU1 is open October 1-31 ~~through~~ ~~December 31~~.

RESIDENT/NONRESIDENT CRITERIA

Not Applicable.

RECRUITMENT, RETENTION, REACTIVATION (R3) CRITERIA

Not Applicable.

FISCAL IMPACT

Not Applicable.

GAME, FISH, AND PARKS COMMISSION ACTION PROPOSAL

Custer State Park Early Archery Elk Hunting Season Chapter 41:06:28

Commission Meeting Dates:	Proposal	January 4-5, 2022	Pierre
	Public Hearing	April 7, 2022	Watertown
	Finalization	April 7-8, 2022	Watertown

COMMISSION PROPOSAL

Duration of Proposal: 2022 and 2023 hunting seasons.

Season Dates: September 1-30, 2022
September 1-30, 2023

Licenses: 4 resident "Any Elk" licenses

Requirements and Restrictions:

1. The unit is open within the boundaries of Custer State Park.
2. Any elk that is harvested must be inspected by a Department representative within 24 hours after kill.

Proposed changes from last year:

1. Adjust the total number of available licenses from 3 "any elk" to no more than 10 "any elk" licenses.

SUPPORTIVE INFORMATION

The proposed maximum number of elk licenses will be established in administrative rule and the GFP Commission via administrative action will determine specific number of licenses by tag types and allocation amongst hunting units.

Updated population objectives and the recommended number of licenses will be shared at the March Commission meeting once preliminary harvest estimates have been obtained and population modeling exercises have been completed.

Year	Licensed Hunters	1st Choice Applicants	Success Rate	Elk Harvested
2012	3	2,078	0%	0
2013	3	2,740	100%	3 bulls
2014	4	3,023	100%	4 bulls
2015	4	3,600	75%	3 bulls
2016	3	3,707	33%	1 bull
2017	3	3,704	33%	1 bull
2018	3	3,772	67%	2 bulls
2019	3	4,055	100%	3 bulls
2020	3	4,353	33%	1 bull
2021	3	4,456	33%	1 bull

APPROVE ____
 MODIFY ____
 REJECT ____
 NO ACTION ____

DRAFT ADMINISTRATIVE RULE CHANGES

The following are proposed draft changes that are intended to incorporate the recommended changes adopted by the Commission.

41:06:28:01. Custer State Park early archery elk hunting season established -- Number and type of licenses -- Season dates. The Custer State Park early archery elk hunting season is open one-half hour before sunrise to one-half hour after sunset each day and is restricted by chapter 41:06:07. No more than ~~three~~ 10 "any elk" licenses may be issued for the Custer State Park early archery elk hunting season. The Custer State Park early archery elk hunting season is open from September 1 through September 30.

RESIDENT/NONRESIDENT CRITERIA

Not Applicable.

RECRUITMENT, RETENTION, REACTIVATION (R3) CRITERIA

Not Applicable.

FISCAL IMPACT

Not Applicable.

APPROVE ____ **MODIFY** ____ **REJECT** ____ **NO ACTION** ____

GAME, FISH AND PARKS COMMISSION ACTION PROPOSAL

Archery Elk Hunting Season Chapter 41:06:43

Commission Meeting Dates:	Proposal	January 4-5, 2022	Pierre
	Public Hearing	April 7, 2022	Watertown
	Finalization	April 7-8, 2022	Watertown

COMMISSION PROPOSAL

Duration of Proposal: 2022 and 2023 hunting seasons.

Season Dates: Black Hills Units: September 1-30, 2022
September 1-30, 2023

Open Area: See attached map

Licenses: 182 “any elk” and 90 “antlerless elk” licenses (total of 272 licenses)

Requirements and Restrictions:

1. No person may possess more than one (1) elk license of any type in a year.
2. No more than two persons may submit applications together.
3. Except for landowner/operator preference applicants, no person who receives a license in the first drawing for this season shall be eligible to apply for an archery elk license in first drawings for the next 9 years.
4. One-half of the licenses allocated in each unit are available for landowner/operator preference application. Only one member of each qualifying landowner/operator household may apply every year.
5. Any elk harvested must be inspected by a Department representative within 24 hours after kill.

Proposed changes from last year:

1. Adjust the number of licenses available from 142 “any elk” and 80 “antlerless elk” licenses (total of 222 licenses) to no more than 200 “any elk” and 150 “antlerless elk” licenses (total of 350 licenses).

SUPPORTIVE INFORMATION

The proposed maximum number of elk licenses will be established in administrative rule and the GFP Commission via administrative action will determine specific number of licenses by tag types and allocation amongst hunting units.

Updated population objectives and the recommended number of licenses will be shared at the March Commission meeting once preliminary harvest estimates have been obtained and population modeling exercises have been completed.

APPROVE _____ MODIFY _____ REJECT _____ NO ACTION _____

Year	Licensed Hunters	Hunter Success	Bulls Harvested	Cows Harvested	Total Harvest
2017	269	26%	50	20	70
2018	219	38%	65	19	84
2019	216	42%	77	14	91
2020	204	45%	80	12	92
2021	219	43%	80	14	94

2021	"Any Elk"					"Antlerless Elk"				
Unit	Appl. 1st Choice	Licensed Hunters	Harvest Success	Bulls Harvested	Cows Harvested	Appl. 1st Choice	Licensed Hunters	Harvest Success	Bulls Harvested	Cows Harvested
H1	754	20	40%	8	0	5	10	20%	0	2
H2	4,067	81	63%	48	3	75	40	18%	0	7
H3	756	36	56%	18	2	22	20	5%	0	1
H5	39	2	0%	0	0	NA	NA	NA	NA	NA
H7	248	10	60%	6	0	NA	NA	NA	NA	NA

*2021 preliminary harvest data

DRAFT ADMINISTRATIVE RULE CHANGES

The following are proposed draft changes that are intended to incorporate the recommended changes adopted by the Commission.

41:06:43:01. Archery elk hunting season established -- Number and type of licenses available -- Season dates. The archery elk hunting season is open from one-half hour before sunrise to one-half hour after sunset each day of the season. No more than ~~447~~ 200 "any elk" licenses and ~~70~~ 150 "antlerless elk" licenses may be issued for the archery elk hunting season. The archery elk hunting season for Units AAE-H1A, AAE-H2A, AAE-H3A, AAE-H4A, AAE-H5A, AAE-H7A, and AAE-H9A is open from September 1 through September 30.

RESIDENT/NONRESIDENT CRITERIA

Not Applicable.

RECRUITMENT, RETENTION, REACTIVATION (R3) CRITERIA

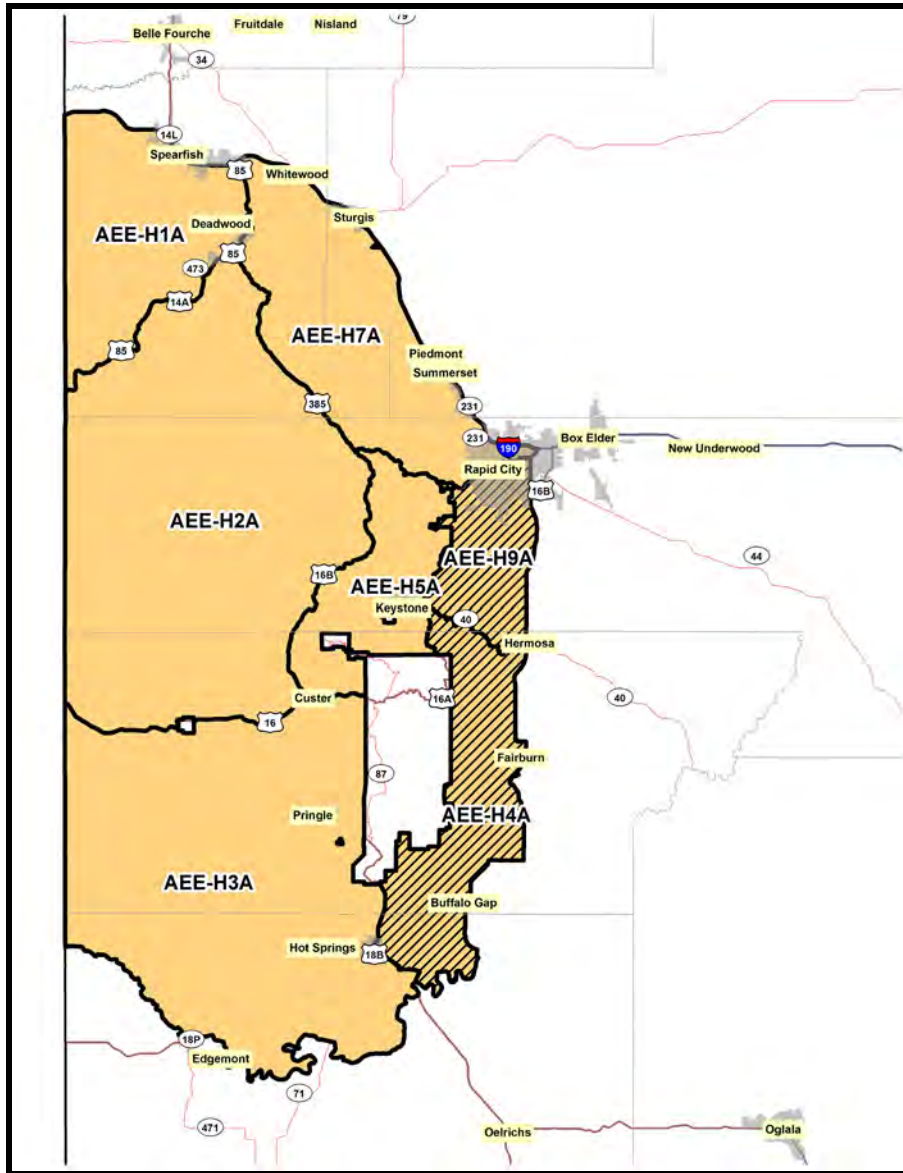
1. Does the regulation or fee inhibit a user's ability to participate? Not applicable.
2. Does the regulation increase the opportunity for new and existing users? Not applicable.
3. How does the regulation impact the next generation of hunters, anglers, trappers and outdoor recreationists? Not applicable.
4. Does the regulation enhance the quality of life for current and future generations by getting families outdoors? Not applicable.

FISCAL IMPACT

Not applicable.

APPROVE _____ MODIFY _____ REJECT _____ NO ACTION _____

BLACK HILLS ARCHERY ELK UNITS



Unit	2022 & 2023		Total Tags
	"Any" Elk Tags	"Antlerless" Elk Tags	
H1	30	20	50
H2	100	40	140
H3	40	30	70
H4	0	0	0
H5	2	0	2
H7	10	0	10
H9	0	0	0
TOTAL	182	90	272

GAME, FISH AND PARKS COMMISSION ACTION PROPOSAL

Prairie Elk Hunting Season Chapter 41:06:59

Commission Meeting Dates:	Proposal	January 4-5, 2022	
	Public Hearing	April 7, 2022	Pierre
	Finalization	April 7-8, 2022	Watertown
			Watertown

COMMISSION PROPOSAL

Duration of Proposal: 2022 and 2023 hunting seasons.

Season Dates:

Unit	2022 & 2023 Hunting Season Dates
9A	September 15 - October 31 AND December 1-31
11A	July 15 - August 31
11B	September 1 - October 15
11C	October 16 - November 30
11D	September 1 - October 31
11E	November 1 - December 31
11F	CLOSED
15A	September 1 - October 31 AND December 1-31
15B	December 1 - January 31
27A	October 1-31 AND December 1-31
35A, 35B	September 15 – October 31 AND December 1-31
35C, 35E	October 1 – November 15
35D, 35F	November 16 – December 31
49A	September 15 - October 31 AND December 1-31
WRA	September 1 - December 31

Open Area:

Unit 09A	Portions of Butte and Lawrence counties
Unit 11A-F	Bennett County and portions of Jackson and Mellette counties
Unit 15A and B	Portions of Butte and Lawrence counties
Unit 27A	Portions of Fall River County
Unit 35A, C and D	Harding County west of US Hwy. 85
Unit 35B, E and F	Harding County east of US Hwy. 85
Unit 49A	Portions of Meade County
Unit WRA	Those portions of South Dakota west of the Missouri River not associated with another prairie elk unit, excluding the Lower Brule Indian Reservation and Corson, Dewey, Oglala Lakota, Todd, and Ziebach counties.

Licenses: 102 “any elk” and 175 “antlerless elk” licenses (total of 277 licenses)

Requirements and Restrictions:

1. No person may possess more than one (1) elk license of any type in a year.
2. No more than two persons may submit applications together.
3. Except for landowner/operator preference applicants, no person who receives a license in the first drawing for this season shall be eligible to apply for a prairie elk license in first drawings for the next 9 years.
4. One-half of the licenses allocated in each unit are available for landowner/operator preference. One member of each qualifying landowner/operator household may apply every year.
5. Any elk that is harvested must be inspected by a Department representative within 24 hours after kill.

APPROVE _____	MODIFY _____	REJECT _____	NO ACTION _____
---------------	--------------	--------------	-----------------

Proposed changes from last year:

1. Adjust the number of licenses available from 78 “any elk” and 178 “antlerless elk” licenses (total of 256 licenses) to no more than 100 “any elk” and 300 “antlerless elk” licenses (total of 400 licenses).
2. Modify Unit PRE-9A (see map).
3. Establish a new unit (PRE-49A) to include a portion of Meade County and season dates (see map).
4. Correct season dates in administrative rule for units PRE-11B, PRE-11C, PRE-11D, PRE-35A, and PRE-35B.

DEPARTMENT RECOMMENDATION

1. Adjust the number of licenses available from 78 “any elk” and 178 “antlerless elk” licenses (total of 256 licenses) to no more than 150 “any elk” and 300 “antlerless elk” licenses (total of 450 licenses).
2. Modify prairie elk units 35A (Harding County west of US Hwy. 85) and 35B (Harding County east of US Hwy. 85) to the following:
 - a. Units 35A, 35C, and 35D: Harding County west of US Hwy. 85
 - b. Units 35B, 35E, and 35F: Harding County east of US Hwy. 85
3. Establish season dates for prairie elk units 35A, 35B, 35C, and 35D as follows:
 - a. Units 35A and 35B: September 15-October 31 AND December 1-31 (any elk licenses)
 - b. Units 35C and 35E: October 1 – November 15 (antlerless elk licenses)
 - c. Units 35D and 35F: November 16 – December 31 (antlerless elk licenses)

SUPPORTIVE INFORMATION

The proposed maximum number of elk licenses will be established in administrative rule and the GFP Commission via administrative action will determine specific number of licenses by tag types and allocation amongst hunting units.

Updated population objectives and the recommended number of licenses will be shared at the March Commission meeting once preliminary harvest estimates have been obtained and population modeling exercises have been completed.

Harvest strategies to meet landowner tolerance in Harding County warrants an increase in elk licenses, most noticeably, antlerless elk licenses. The establishment of new units with respective season dates is intended to manage hunter densities.

The recommended number of 102 “any elk” licenses exceeds the current proposed limit of no more than 100 “any elk licenses. Increasing this would allow additional bull elk hunting opportunities.

The proposed changes to prairie elk hunting unit boundaries and season date changes are to improve elk management on private land, simplify season dates, and distribute hunter densities.

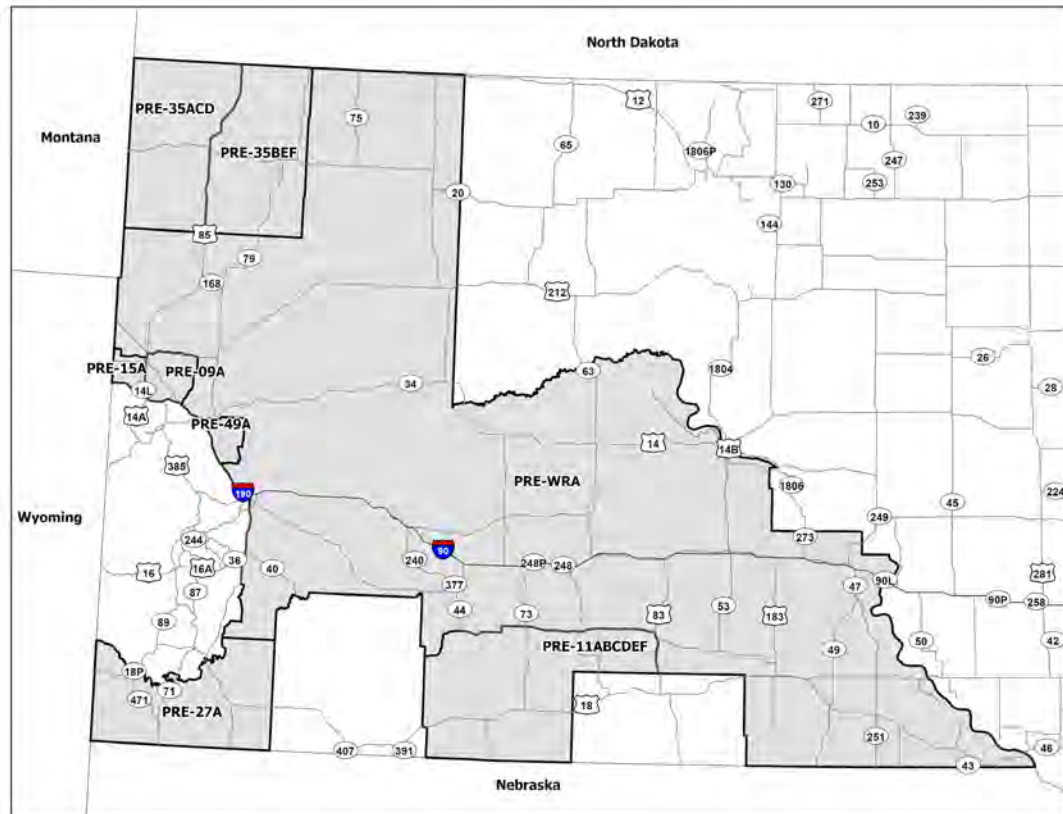
Year	Licensed Hunters	Hunter Success	Bulls Harvested	Cows Harvested
2016	148	40%	32	27
2017	149	54%	41	39
2018	139	79%	59	51
2019	140	65%	41	50
2020	251	57%	56	87

APPROVE _____ MODIFY _____ REJECT _____ NO ACTION _____

Unit/Type	Appl. 1st Choice	Licensed Hunters	Harvest Success	Bulls	Cows	Bull Calves	Cow Calves	Total Harvest
09A-21	304	10	0%	0	0	0	0	0
09A-23	20	15	50%	0	8	0	0	8
11A-23	41	18	55%	0	10	0	0	10
11B-21	450	16	71%	11	0	0	0	11
11C-21	181	16	58%	8	1	0	0	9
11D-23	75	31	73%	0	19	0	4	23
11E-23	45	30	8%	0	0	2	0	2
11F-23	23	30	Preliminary Data Not Available					
15A-21	104	8	20%	2	0	0	0	2
15A-23	5	5	Preliminary Data Not Available					
27A-21	533	10	83%	8	0	0	0	8
27A-23	26	10	83%	0	8	0	0	8
35A-21	754	4	100%	4	0	0	0	4
35A-23	24	8	100%	0	6	2	0	8
35B-21	1,333	4	100%	4	0	0	0	4
35B-23	69	12	75%	0	9	0	0	9
WRA-21	881	10	71%	7	0	0	0	7
WRA-23	44	20	27%	0	5	0	0	5
Total	4,912	257	46.3%	45	66	4	4	119

*2021 preliminary harvest data

Proposed Prairie Elk Units



APPROVE MODIFY REJECT NO ACTION

DRAFT ADMINISTRATIVE RULE CHANGES

The following are proposed draft changes that are intended to incorporate the recommended changes adopted by the Commission.

41:06:59:01. Prairie elk hunting season established -- Number and type of licenses available - - Season dates. The prairie elk hunting season is open from one-half hour before sunrise to one-half hour after sunset each day of the season. No more than ~~78~~ 150 "any elk" licenses and ~~478~~ 300 "antlerless elk" licenses may be issued for the prairie elk hunting season. The prairie elk hunting seasons are as follows:

- (1) Unit PRE-09A is open from September 15 through October 31 and from December 1 through December 31;
- (2) Unit PRE-11A is open from July 15 through August 31;
- (3) Unit PRE-11B is open from September 1 through ~~the Friday before the third Saturday in~~ October 15;
- (4) Unit PRE-11C is open from ~~the Saturday following the second Sunday of~~ October 16 through November 30;
- (5) Unit PRE-11D is open from September 1 through ~~December~~ October 31;
- (6) Unit PRE-11E is open from November 1 through December 31;
- (7) Unit PRE-11F is open from January 1 through the last day of February;
- (8) Unit PRE-15A is open from September 1 through October 31 and from December 1 through December 31;
- (9) Unit PRE-15B is open from December 1 through January 31;
- (10) Unit PRE-27A is open from October 1 through October 31 and from December 1 through December 31;
- (11) Unit PRE-35A is open from September 4 15 through October 31 and December 1 through December 31;
- (12) Unit PRE-35B is open from September 4 15 through October 31 and December 1 through December 31; ~~and~~
- (13) Unit PRE-35C is open from October 1 through November 15;
- (14) Unit PRE-35D is open from November 16 through December 31;
- (15) Unit PRE-35E is open from October 1 through November 15;
- (16) Unit PRE-35F is open from November 16 through December 31;
- (17) Unit PRE-49A is open from September 15 through October 31 and from December 1 through December 31; and
- (~~43~~ 18) Unit PRE-WRA is open from September 1 through December 31.

APPROVE _____ **MODIFY** _____ **REJECT** _____ **NO ACTION** _____

41:06:59:02. Open units. The following is a description of the open units for the prairie elk hunting season:

(1) Unit PRE-09A: those portions of Lawrence and Butte Counties within a line beginning at the intersection of U.S. Highways 85 and 212, then east on Highway 212 to Whitewood Valley Road, then south on Whitewood Valley Road to Interstate 90, then west on Interstate 90 to U.S. Highway 85, then north on U.S. Highway 85 to the point of beginning; ~~and that portion of Meade County within a line beginning at the junction of Interstate 90 and Elk Creek Road, then east on Elk Creek Road to Ricard Road, then north on Ricard Road to Tilford Road, then east on Tilford Road to Middle Alkali Road, then north on Middle Alkali Road to Alkali Road, then west on Alkali Road to 133rd Avenue, then south on 133rd Avenue to 206th Street, then west on 206th Street to Lazelle Street, then west on Lazelle Street to Interstate 90 then south on Interstate 90 to the point of beginning;~~

(2) Unit PRE-11A: Bennett County, the portion of Jackson County south of State Highway 44 and Bureau of Indian Affairs Highway 2, and those portions of Mellette County south of State Highway 44 and west of U.S. Highway 83;

(3) Unit PRE-11B: Bennett County, the portion of Jackson County south of State Highway 44 and Bureau of Indian Affairs Highway 2, and those portions of Mellette County south of State Highway 44 and west of U.S. Highway 83;

(4) Unit PRE-11C: Bennett County, the portion of Jackson County south of State Highway 44 and Bureau of Indian Affairs Highway 2, and those portions of Mellette County south of State Highway 44 and west of U.S. Highway 83;

(5) Unit PRE-11D: Bennett County, the portion of Jackson County south of State Highway 44 and Bureau of Indian Affairs Highway 2, and those portions of Mellette County south of State Highway 44 and west of U.S. Highway 83;

(6) Unit PRE-11E: Bennett County, the portion of Jackson County south of State Highway 44 and Bureau of Indian Affairs Highway 2, and those portions of Mellette County south of State Highway 44 and west of U.S. Highway 83;

(7) Unit PRE-11F: Bennett County, the portion of Jackson County south of State Highway 44 and Bureau of Indian Affairs Highway 2, and those portions of Mellette County south of State Highway 44 and west of U.S. Highway 83;

(8) Unit PRE-15A: the portion of Butte County beginning at the junction of the South Dakota-Wyoming border, east on Sourdough Road to U.S. Highway 85, then south on U.S. Highway 85 to Interstate 90, then west on Interstate 90 to the South Dakota-Wyoming border, then north to the point of beginning;

(9) Unit PRE-15B: the portion of Butte County beginning at the junction of the South Dakota-Wyoming border, east on Sourdough Road to U.S. Highway 85, then south on U.S. Highway 85 to Interstate 90, then west on Interstate 90 to the South Dakota-Wyoming border, then north to the point of beginning;

(10) Unit PRE-27A: the portion of Fall River County not included in BHE-H3;

(11) Units PRE-35A, PRE-35C, and PRE-35D: the portion of Harding County west of U.S. Highway 85;

(12) Units PRE-35B, PRE-35E, and PRE-35F: the portion of Harding County east of U.S. Highway 85; and

APPROVE _____	MODIFY _____	REJECT _____	NO ACTION _____
---------------	--------------	--------------	-----------------

(13) Unit PRE-49A: the portion of Meade County within a line beginning at the junction of Interstate 90 and Elk Creek Road, then east on Elk Creek Road to Ricard Road, then north on Ricard Road to Tilford Road, then east on Tilford Road to Middle Alkalai Road, then north on Middle Alkalai Road to Alkalai Road, then west on Alkalai Road 133rd Avenue, then south on 133rd Avenue to 206th Street, then west on 206th Street to Lazelle Street to Interstate 90 then south on Interstate 90 to the point of beginning; and

~~(13)~~ (14) Unit PRE-WRA: the portion of the state west of the Missouri River not associated with another prairie elk unit, excluding the Lower Brule Indian Reservation and Corson, Dewey, Oglala Lakota, Todd, and Ziebach counties.

RESIDENT/NONRESIDENT CRITERIA

Not Applicable.

RECRUITMENT, RETENTION, REACTIVATION (R3) CRITERIA

1. Does the regulation or fee inhibit a user's ability to participate? No. The Department is recommending changes to prairie elk hunting unit boundaries and season dates to improve elk management on private land, simplify season dates, and distribute hunter densities.
2. Does the regulation increase the opportunity for new and existing users?
 - The proposed changes to license allocation would slightly increase elk hunting opportunities.
3. How does the regulation impact the next generation of hunters, anglers, trappers and outdoor recreationists? Increases opportunity for elk hunting in western South Dakota and simplifies prairie elk hunting units.
4. Does the regulation enhance the quality of life for current and future generations by getting families outdoors? Increases opportunity for elk hunting in western South Dakota.

FISCAL IMPACT

Minimal increase in license sales revenue.

APPROVE _____ MODIFY _____ REJECT _____ NO ACTION _____

GAME, FISH AND PARKS COMMISSION ACTION PROPOSAL

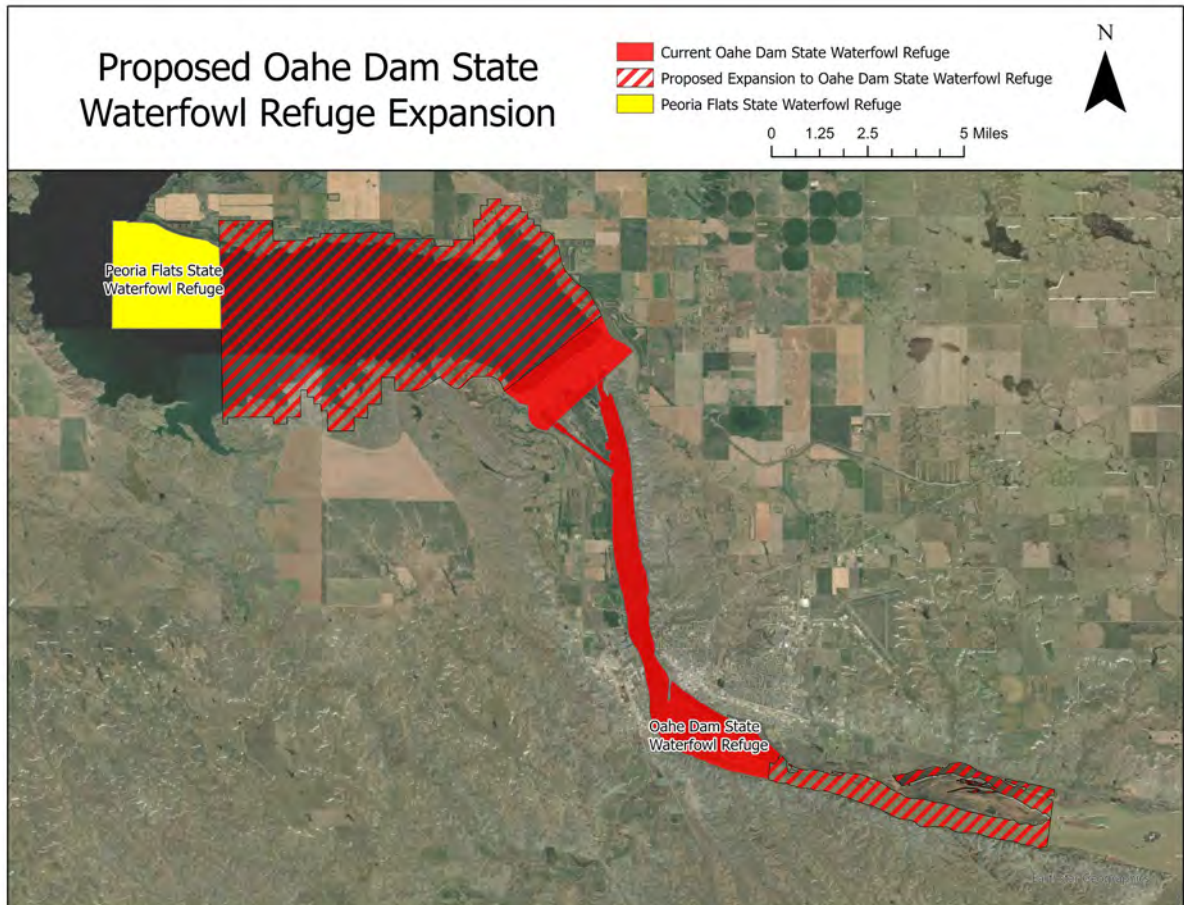
Refuges Chapter 41:05:02

Commission Meeting Dates:	Proposal Public Hearing Finalization	January 4-5, 2022 April 7, 2022 April 7-8, 2022	Pierre Watertown Watertown
----------------------------------	---	--	---

COMMISSION PROPOSAL

Proposed changes from last year:

1. Modify the boundary of the Oahe Dam State Waterfowl Refuge by expanding the geographic area of the refuge to include the water of Lake Oahe and all lands owned and managed by the South Dakota Department of Game, Fish and Parks and the US Army Corps of Engineers lying south and west of S.D. Highway 1804 and north and east of S.D. Highway 1806 from the current refuge boundary upstream of Oahe Dam to the east boundary of Peoria Flats State Waterfowl Refuge and the water line from the downstream point of LaFramboise Island to the downstream point of Farm Island (see map).



DEPARTMENT RECOMMENDATION

Recommended changes from proposal:

1. To withdraw proposal and retain current refuge boundary.

APPROVE _____	MODIFY _____	REJECT _____	NO ACTION _____
----------------------	---------------------	---------------------	------------------------

SUPPORTIVE INFORMATION

The Commission denied a petition submitted by the South Dakota Migratory and Upland Gamebird Association as a component of the petition was to include a 50-year clause. The Commission, however, did develop a proposal that includes the addition to the Oahe Dam State Waterfowl Refuge as requested by the petitioner and believes the requested additions to the Oahe Dam State Waterfowl Refuge deserve an opportunity for public comment.

It is unknown if the proposed refuge change will enhance waterfowl hunting opportunities in the Pierre/Ft. Pierre area at a level greater than the current public hunting opportunities that would be taken away. In addition, the total area in the proposed refuge expansion and removal of public access for waterfowl hunting opportunities is 14,768 acres; a 444% increase in size that includes 11,704 acres of water and 3,064 acres of land. The proposed refuge expansion would remove shoreline hunting that includes 24.2 miles upstream and 24.5 miles downstream of Oahe Dam.

DRAFT ADMINISTRATIVE RULE CHANGES

The following are proposed draft changes that are intended to incorporate the recommended changes adopted by the Commission.

41:05:02:68. Missouri River refuges. Except as otherwise expressly provided in this section, the Missouri River refuges described in subdivisions (1) through (11), and (13) and (14) are closed to all waterfowl hunting from the opening day of the earliest waterfowl season through the last day of the Canada goose season and are open to duck hunting after the last day of the Canada goose season. The Missouri River refuges described in subdivision (12) and subdivisions (15) through (21), are closed to waterfowl hunting during all of the waterfowl seasons. The refuges, including all islands and bars within the refuges, are described as follows:

(12) Oahe Dam State Waterfowl Refuge comprises an area that includes the water of Lake Oahe and all lands owned and managed by the South Dakota Department of Game, Fish and Parks and the US Army Corps of Engineers lying south and west of S.D. Highway 1804 and north and east of S.D. Highway 1806 located east of the west section lines of sections 25 and 36 in township 112 north, range 81 west of the fifth principal meridian, Hughes County; the west section line of section 1 in township 111 north, range 81 west of the fifth principal meridian, Hughes County; the west section lines of sections 29 and 32 in township 6 north, range 30 east of the Black Hill meridian, Stanley County; and the west section line of section 5 in township 5 north, range 30 east of the Black Hills meridian, Stanley County, and continuing 3,000 feet downstream from the center of the top of the Oahe Dam grade, and an area within the water's edge from Oahe Dam to the downstream point of LaFramboise Farm Island. The wing dike, channel block 6, and the causeway located in section 9, township 5 north, range 31 east of the Black Hills meridian in Stanley County, commonly known as Echo Point, are closed to waterfowl hunting;

RESIDENT/NONRESIDENT CRITERIA

Not applicable.

RECRUITMENT, RETENTION, REACTIVATION (R3) CRITERIA

1. Does the regulation or fee inhibit a user's ability to participate? Yes, by not allowing waterfowl hunting on public water and lands in the expanded geographic area of the refuge.
2. Does the regulation increase the opportunity for new and existing users? No, it restricts waterfowl hunting on public water and lands in the expanded geographic area of the refuge with the desire of increasing waterfowl hunting in the Pierre/Ft. Pierre area.

APPROVE _____	MODIFY _____	REJECT _____	NO ACTION _____
----------------------	---------------------	---------------------	------------------------

3. How does the regulation impact the next generation of hunters, anglers, trappers, and outdoor recreationists? Restricts waterfowl hunting in the expanded geographic area of the refuge with the desire of increasing waterfowl hunting in the Pierre/Ft. Pierre area.
4. Does the regulation enhance the quality of life for current and future generations by getting families outdoors? Not applicable.

FISCAL IMPACT

Unknown.

APPROVE _____ MODIFY _____ REJECT _____ NO ACTION _____

GAME, FISH AND PARKS COMMISSION ACTION PROPOSAL

Bighorn Sheep Hunting Season

Chapters 41:06:01; 41:06:07; and 41:06:56

Commission Meeting Dates:	Proposal	January 4-5, 2022	
	Public Hearing	April 7, 2022	Pierre
	Finalization	April 7-8, 2022	Watertown
			Watertown

COMMISSION PROPOSAL

Duration of Proposal: 2022 and 2023 hunting seasons

Season Dates: September 1 – December 31, 2022
September 1 – December 31, 2023

Open Area: Units 2, 4, and Custer State Park. See unit map for boundaries.

Licenses: 11 “ram bighorn sheep” licenses.

One of the licenses shall be an auction “ram bighorn sheep” license if a minimum of three total bighorn sheep licenses are allocated.

Requirements and Restrictions:

1. Except for the auction license, application for a license may be made by any resident hunter who has not been previously issued a bighorn sheep license in South Dakota.
2. Landowner - operator preference is not applicable to these licenses.
3. All licensees are required to attend an orientation meeting prior to the first day of hunting by the license holder at the regional office in Rapid City.
4. One bighorn sheep license shall be allocated as an auction license if a minimum of three bighorn licenses are approved by the Commission. The Commission shall determine in which unit or units the auction license is valid.
5. All successful hunters must submit their bighorn sheep to a conservation officer or Department representative for inspection and permanent marking within 24 hours after the kill.

Proposed changes from last year:

1. Increase the number of “ram bighorn sheep” licenses from 8 to 11.
2. Change the mandatory orientation meeting from “preceding the opening day of the season” to “preceding the first day of hunting by the license holder”.
3. Eliminate Unit BHS-ZZ1 for preference points.

DEPARTMENT RECOMMENDATION

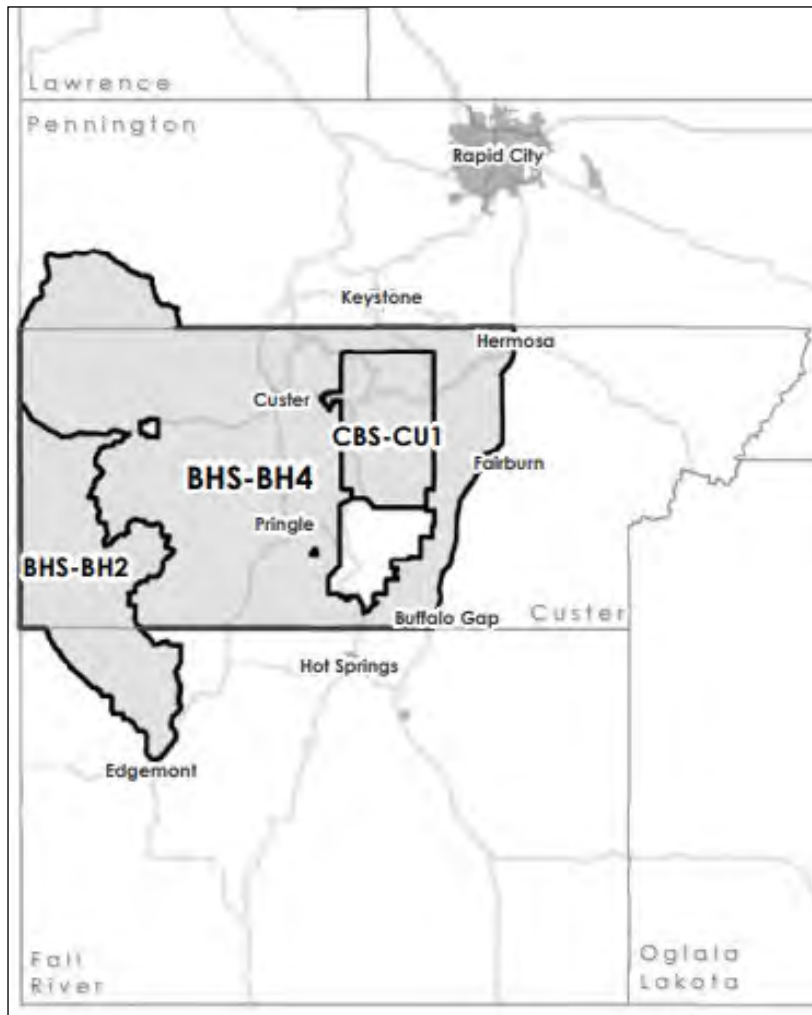
Recommended changes from proposal: None.

Allocation of Licenses by Unit

Unit	2020-21 Licenses	2022-23 Licenses
1	0	0
2	3	3
3	1	0
4	2	4
CSP	1	3

APPROVE _____ **MODIFY** _____ **REJECT** _____ **NO ACTION** _____

Proposed 2022 Hunting Units



SUPPORTIVE INFORMATION

Due to the recent *M. ovi* pneumonia outbreak in Unit 3, both the Department and Badlands National Park recommend issuing no licenses in this unit.

Based on the strong numbers of ram bighorn sheep across all age classes, the increase to the number of licenses being proposed in Custer State Park will not negatively affect the viewability of bighorn sheep for park visitors and will provide additional hunting opportunities.

Modifying the requirement for the mandatory hunter orientation will provide better customer service to those licensed hunters.

In addition to the licenses allocated by units above, the Commission recommends the auction license to be valid in Units 2, 4, and Custer State Park.

The removal of the BHS-ZZ1 unit (preference point only option) in the application will streamline the application process for applicants and better align with business rules in GFP's new licensing system. Hunters that want to purchase a preference point can still do so when preference points are available for purchase each year, from September 15 to December 15.

APPROVE _____ MODIFY _____ REJECT _____ NO ACTION _____

DRAFT ADMINISTRATIVE RULE CHANGES

The following are proposed draft changes that are intended to incorporate the recommended changes adopted by the Commission.

41:06:56:03. Number and type of licenses. No more than ~~eight~~ 11 ram bighorn sheep licenses may be issued for the bighorn sheep hunting season. One bighorn sheep license may be issued for sale by auction pursuant to the procedures established in this chapter, valid for one ram bighorn sheep. ~~In Unit BHS-ZZ1, no bighorn sheep licenses may be issued. However, an applicant for this unit shall accrue a preference point as provided in § 41:06:01:09.~~

41:06:56:05. Mandatory briefing and check-in. All licensees are required to attend an orientation meeting preceding the ~~opening day of the season~~ first day of hunting by the license holder at the regional office in Rapid City. All successful hunters must submit their bighorn sheep to a designated department representative for inspection and permanent marking within 24 hours after the kill.

RESIDENT/NONRESIDENT CRITERIA

Not applicable.

RECRUITMENT, RETENTION, REACTIVATION (R3) CRITERIA

1. Does the regulation or fee inhibit a user’s ability to participate? No.
2. Does the regulation increase the opportunity for new and existing users? Yes, by increasing the total number of bighorn sheep licenses.
3. How does the regulation impact the next generation of hunters, anglers, trappers, and outdoor recreationists? Not applicable.
4. Does the regulation enhance the quality of life for current and future generations by getting families outdoors? Not applicable.

FISCAL IMPACT

Minimal increase in license sales revenue.

APPROVE _____	MODIFY _____	REJECT _____	NO ACTION _____
----------------------	---------------------	---------------------	------------------------

GAME, FISH AND PARKS COMMISSION ACTION PROPOSAL

FISH LIMITS Chapters 41:07:03

Commission Meeting Dates:	Proposal	March 3-4, 2022	Pierre
	Public Hearing	April 7, 2022	Watertown
	Finalization	April 7-8, 2022	Watertown

COMMISSION PROPOSAL

Proposed changes:

1. Remove the restriction requiring anglers to keep the first four walleye caught when fishing through the ice for the lower portion of Lake Francis Case. (PETITION)

Department recommended changes to proposal:

1. In addition to the proposed change, also remove the exemption to the 15-inch minimum length limit for the lower portion of Lake Francis Case, where length limits for walleye do not apply to any angler while fishing through the ice. This would make walleye length limits for all areas of Lake Francis Case consistent throughout the year.

SUPPORTIVE INFORMATION

Current walleye regulations for the lower portion of Lake Francis Case, while fishing through the ice, include:

1. The first four walleyes caught must be kept
2. The 15-inch minimum length limit does not apply

A proposal was made by the commission at their January 2022 meeting, in response to a petition, that would remove the requirement that the first four walleyes caught be kept, while fishing through the ice in the lower portion of Lake Francis Case.

The proposal, with the department recommended changes, would remove the existing walleye harvest restriction requiring anglers to not release any walleye caught while fishing through the ice in the lower portion of Lake Francis Case. It would also remove the exemption to the 15-inch minimum length limit in effect when fishing through the ice in this portion of the reservoir, meaning the 15-inch minimum length limit would be in effect for all areas of Lake Francis Case from September 1 through June 30.

Specific regulations for walleye harvest, when fishing through the ice on the lower end of Lake Francis Case, were enacted in 2001 in response to public concern over high mortality of walleye caught from deep water and then released. The intent of the regulations was to reduce post-release mortalities by prohibiting release of walleye and limiting the number of walleyes caught during a fishing trip. There is evidence to support the idea that post-release mortality increases at deeper depths.

The special walleye harvest regulations for the lower portion of Lake Francis Case, when fishing through the ice, is the only case in the state where a regulation specifically requiring fish to be harvested exists because of potential post-release mortality. However, the same issue occurs at other locations during various times of the year, including in the lower portion of Lake Francis Case during the summer.

APPROVE _____ **MODIFY** _____ **REJECT** _____ **NO ACTION** _____

DRAFT ADMINISTRATIVE RULE CHANGES

The following are proposed draft changes that are intended to incorporate the recommended changes adopted by the Commission.

41:07:03:03. Daily, possession, and length limit restrictions on special management waters -- Additional restrictions described. Daily limit, possession limit, length limit, and additional restrictions on special management waters are described as follows:

(8) In Lakes Francis Case and Sharpe, the minimum length limit for walleye is 15 inches from September 1 through June 30. ~~However, in Lake Francis Case, length limits for walleye do not apply to any angler while fishing through the ice from the northern, east-west Gregory-Charles-Mix county line downstream to Fort Randall Dam, and such angler may not return or release to the water any walleye;~~

GAME, FISH AND PARKS COMMISSION ACTION PROPOSAL

Public Waters Chapter 41:04:02

Commission Meeting Dates:	Proposal	January 4-5, 2022	Pierre
	Public Hearing	April 7, 2022	Watertown
	Finalization	April 7-8, 2022	Watertown

COMMISSION PROPOSAL

Proposed changes from last year:

1. Remove no boating zones and allow for non-motorized watercraft within the Waubay National Wildlife Refuge and the Waubay State Game Bird Refuge.
2. Establish a no wake zone at a new boat ramp at Lake Poinsett State Recreation Area in Brookings County.
3. Modify the no wake zone at the Belle Fourche Reservoir in Butte County to include all boat ramps.

SUPPORTIVE INFORMATION

GFP and the USFWS have been in collaboration to discuss ways to increase recreational opportunities, while still meeting the objectives of the refuge system. The USFWS Refuge System recently removed restrictions to increase outdoor opportunities at Waubay National Wildlife Refuge within their mission and management responsibilities. These respective administrative rules are prohibiting the USFWS from allowing these outdoor opportunities.

During the project development of the new Lake Poinsett Recreation Area east boat ramp the GFP held a public open house. During this open house residents of the South Lake Drive made a request of adding a "no wake" zone in the fronting waters of the new east boat ramp. This would give an added protection of this new ramp for loading and unloading of watercrafts. Due to the size of this new boat ramp, it will be the largest ramp on the lake serving the majority of Lake Poinsett's watercraft recreational users.

The establishment of a new boat ramp at the Belle Fourche Reservoir in Butte County warrants a modification to the current administrative rule to provide a buffer for structural and human safety concerns for all boat ramps.

DEPARTMENT RECOMMENDATION

Recommended changes from proposal: None.

DRAFT ADMINISTRATIVE RULE CHANGES

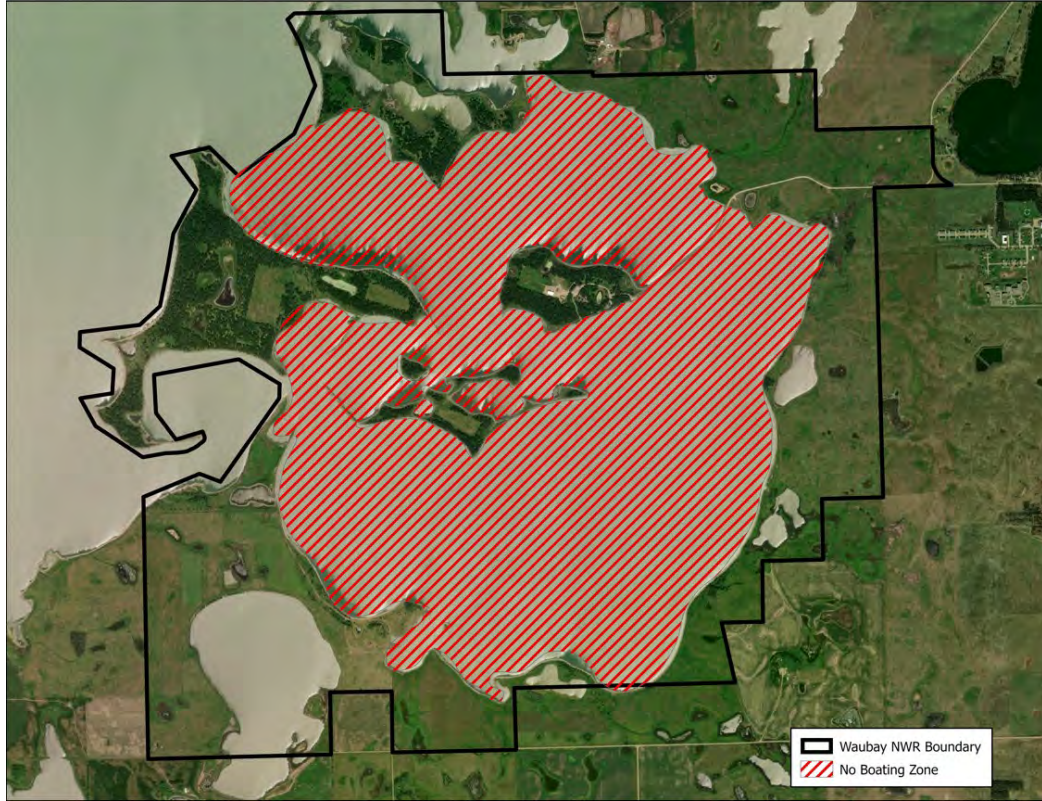
The following are proposed draft changes that are intended to incorporate the recommended changes adopted by the Commission.

41:04:02:18. Day County public water safety zones. Day County public water safety zones are as follows:

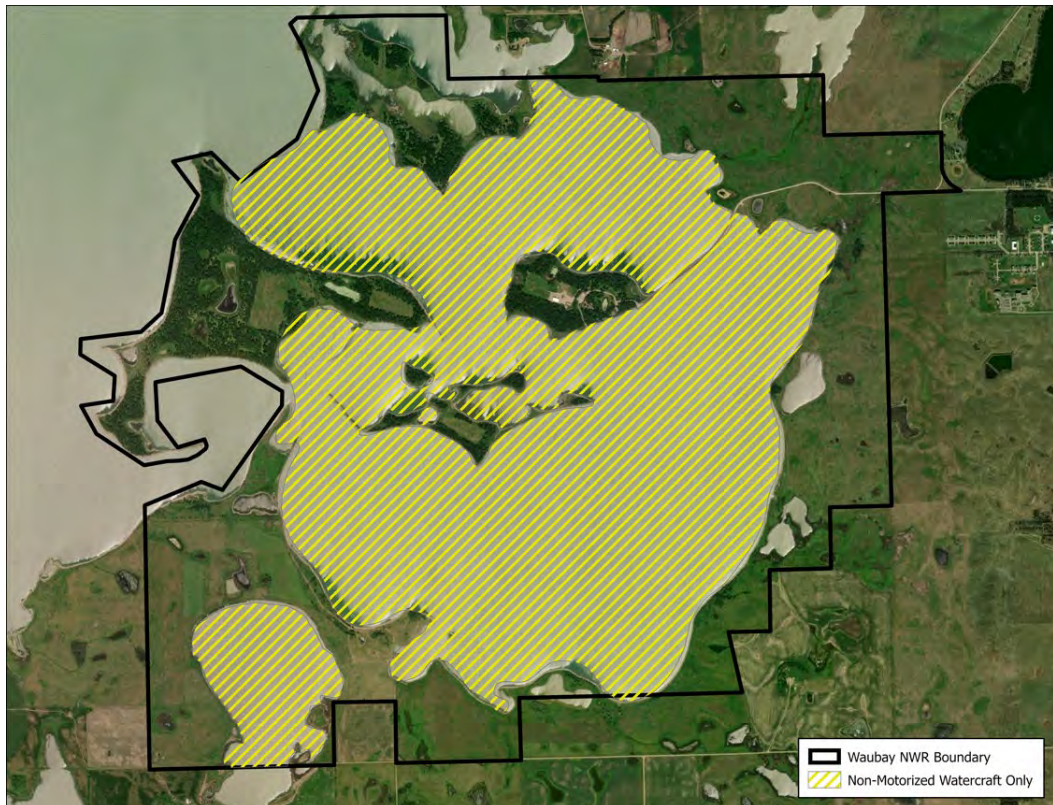
- (3) ~~The waters of Hillebrand's Lake are a "no boating zone";~~
- (4) ~~The waters of Spring Lake are a "no boating zone";~~
- (5) ~~The waters of Swan Pond are a "no boating zone";~~
- (3) The waters within the boundary of Waubay National Wildlife Refuge, including the waters within the Waubay State Game Bird Refuge, except for designated trails, are a "no motor vehicle zone"; non-motorized watercraft are allowed;

APPROVE _____ **MODIFY** _____ **REJECT** _____ **NO ACTION** _____

Waubay National Wildlife Refuge—Current



Waubay National Wildlife Refuge—Proposed



APPROVE _____ MODIFY _____ REJECT _____ NO ACTION _____

41:04:02:05. Brookings County public water safety zones. Brookings County public water safety zones are as follows:

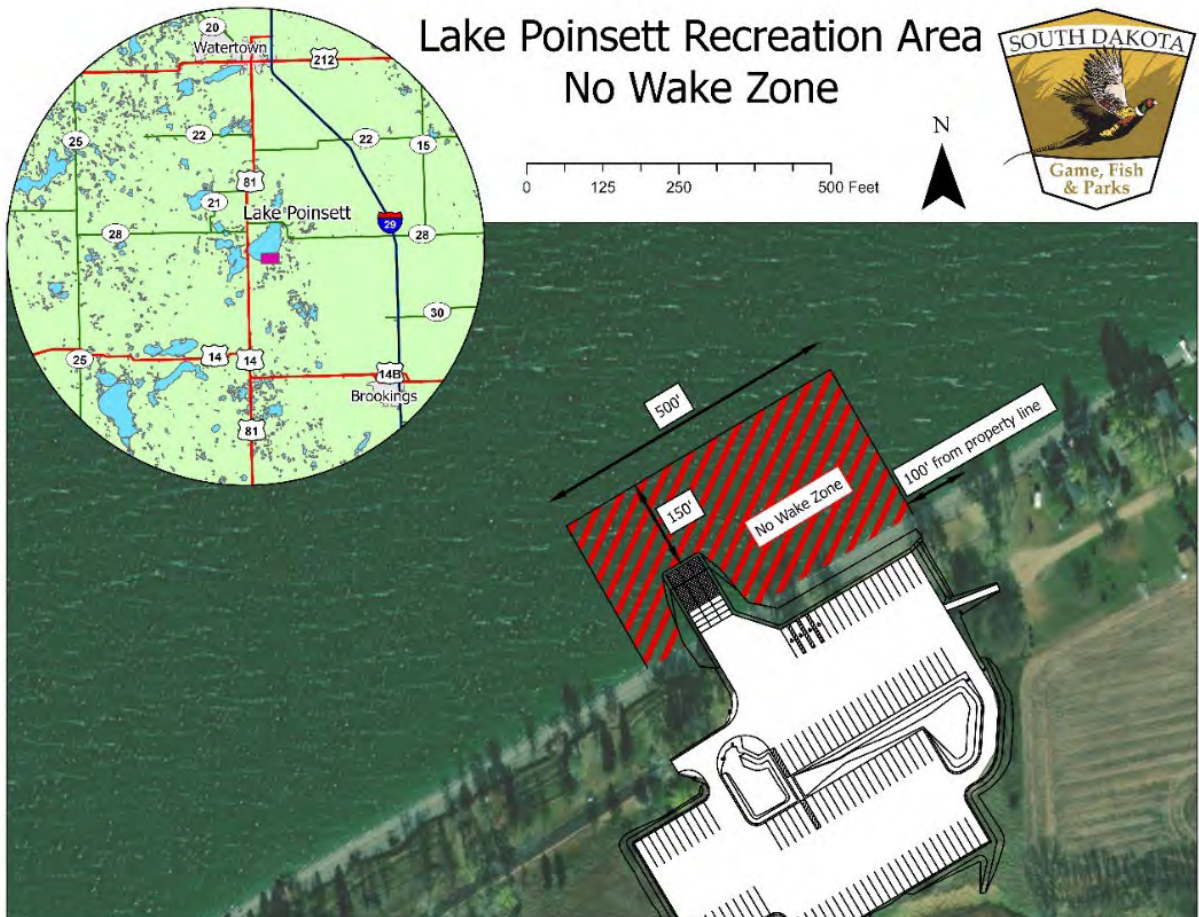
(1) Lake Poinsett:

(a) The waters fronting on that portion of the shoreline beginning approximately 1,800 feet west of the east property line marker located between sections 3 and 4 of the department public access area in the north half of section 4, township 112, range 52 west of the fifth principal meridian and extending approximately 700 feet westerly from this point are a "public swimming zone";

(b) The waters fronting on the waterfront area north of the main building of the Lake Poinsett Methodist Camp for a distance of 500 feet along the shoreline centering just north of the main building are a "public swimming zone";

(c) The waters fronting on that portion of Lake Poinsett State Recreation Area beginning at a point 500 feet west of the west boat ramp and extending 2,150 feet west are a "no wake zone";

(d) The waters fronting on that portion of Lake Poinsett State Recreation Area beginning at a point 100 feet west of the east property boundary of the state recreation area and extending 500 feet west is a "no wake zone";



APPROVE _____ MODIFY _____ REJECT _____ NO ACTION _____

41:04:02:09. Butte County public water safety zones. Butte County public water safety zones are as follows:

- (1) The waters within a 300-foot radius of the boat ramps located in Rocky Point Recreation Area on Belle Fourche Reservoir are a "no wake zone";



RESIDENT/NONRESIDENT CRITERIA

1. The Issue
 - The USFWS Refuge System recently removed restrictions to increase outdoor opportunities within their mission and management responsibilities. These respective administrative rules are prohibiting the USFWS from allowing these outdoor opportunities.
 - Currently state law prohibits wake speed from motorized watercraft within 150 feet from docks and other requirements. The park will also move the current curtesy dock to the east side of this ramp within the offset that correlates to the parking lot. This rule will allow us to visibly mark the 150' barrier from the docks and raise boater awareness and increase safety.
2. Historical Considerations
 - Until recently, these areas within Waubay National Wildlife Refuge were closed to the above-described activities.
 - This is a new development location for the state recreation area boat launch facility.
3. Biological Considerations
 - Not applicable.
4. Social Considerations
 - The park held a public open house describing the project and details. The local homeowners requested a No Wake Zone to aid in slowing down boat traffic on their way to a busy boat launch.
5. Financial considerations
 - Not applicable.

RECRUITMENT, RETENTION, REACTIVATION (R3) CRITERIA

1. Does the regulation or fee inhibit a user's ability to participate? No.
2. Does the regulation increase the opportunity for new and existing users?
 - Yes, it provides recreational opportunities on waters within Waubay National Wildlife Refuge boundary for those using non-motorized watercraft in a new area.
 - No for changes to Lake Poinsett State Recreation Area.
3. How does the regulation impact the next generation of hunters, anglers, trappers, and outdoor recreationists?
 - Waubay National Wildlife Refuge: Provides recreational opportunities for those using non-motorized boats, canoes, and kayaks in a new area.
 - Lake Poinsett State Recreation Area: Visibly marking the 150-foot regulation will educate more recreationalists.
4. Does the regulation enhance the quality of life for current and future generations by getting families outdoors?
 - Yes. It would allow families to use non-motorized watercraft.
 - Yes. A more organized boat launch experience will promote multiple use and recreation and respect.

FISCAL IMPACT

Not applicable.

APPROVE _____ **MODIFY** _____ **REJECT** _____ **NO ACTION** _____

GAME, FISH AND PARKS COMMISSION ACTION PROPOSAL

License Agents Chapter 41:02:01

Commission Meeting Dates:	Proposal	January 4-5, 2022	Pierre
	Public Hearing	April 7, 2022	Watertown
	Finalization	April 7-8, 2022	Watertown

COMMISSION PROPOSAL

Proposed changes from last year:

1. Modify two administrative rules to align new business practices with GFP's new licensing system and requirements.
 - a. Adjust electronic ACH transfers, processes, and timeframe for payments
 - b. Remove the use of Emergency Authorization books

SUPPORTIVE INFORMATION

GFP will be launching the new licensing system on December 15, 2021. Once this occurs, license agents will be required to work within new business practices (i.e. electronic ACH transfers and different timeframes when the electronic money sweeps occur) to continue to be a license agent for GFP. License agents serve an important role for selling licenses on behalf of GFP as well as providing hunters with the ability to purchase hunting and fishing licenses outside normal business hours that GFP offices are open. As technology advances, the ability to sell paper hunting and fishing licenses is no longer needed. Customers will be able to purchase licenses online (through GFP's licensing website) or by visiting a license agent or by calling GFP's call center.

DRAFT ADMINISTRATIVE RULE CHANGES

The following are proposed draft changes that are intended to incorporate the recommended changes adopted by the Commission.

41:02:01:07. Licensing agents report of sales -- Fees remitted. Any licensing agent appointed by the department shall be responsible to the department for payment of all license fees the agent collects on behalf of the department. The department shall produce and distribute invoices for the previous month and shall be made available in an electronic system by the first of each month. ~~for the previous month's recorded sales to each licensing agent no later than the fifteenth day of each month.~~ The department shall make electronic fund sweeps for monthly sales on the 25th day of each month or the next following business day. ~~Each licensing agent shall remit payment by the tenth day of the month following the invoice date.~~ For the purposes of this chapter, the term, license fees, means all fees collected by a licensing agent in connection with the sale of hunting, fishing, and trapping licenses, except for that portion of the fees which are established pursuant to SDCL 41-6-66.1.

41:02:01:12. Emergency authorization books. ~~Each licensing agent using a book containing emergency authorization licenses shall legibly record all information that is requested on the license. The agent shall enter all emergency authorization licenses into the department's licensing system, either online or through the department's licensing call center, no later than 48 hours after issuing an emergency authorization license. An emergency authorization license book shall be returned to the department's licensing office within seven days following issuance of the last license in the book. A~~

APPROVE _____ MODIFY _____ REJECT _____ NO ACTION _____

~~licensing agent shall account for each emergency authorization license at the end of the license season or at the time of termination of licensing agent status. A licensing agent is responsible for any emergency authorization license issued to the agent. The department shall assess an agent \$110 for each missing emergency authorization license. If any missing emergency authorization license is recovered by the agent after the agent has paid \$110 for the missing license, the licensing agent may return the license to the department's licensing office and obtain a full refund Repealed.~~

RESIDENT/NONRESIDENT CRITERIA

1. The Issue
 - N/A
2. Historical Considerations
 - N/A
3. Biological Considerations
 - N/A
4. Social Considerations
 - N/A
5. Financial considerations
 - N/A

RECRUITMENT, RETENTION, REACTIVATION (R3) CRITERIA

1. Does the regulation or fee inhibit a user's ability to participate? No.
2. Does the regulation increase the opportunity for new and existing users? N/A
3. How does the regulation impact the next generation of hunters, anglers, trappers, and outdoor recreationists? N/A
4. Does the regulation enhance the quality of life for current and future generations by getting families outdoors? N/A

FISCAL IMPACT

Not applicable.

APPROVE _____ MODIFY _____ REJECT _____ NO ACTION _____

**GAME, FISH AND PARKS COMMISSION ACTION
PROPOSAL**

Camping Reservations – Cancellation fees

Chapters 41:03:04:05:01

Commission Meeting Dates:	Proposal	November 4, 2021	Pierre
	Public Hearing	March 3, 2021	Pierre
	Finalization	March 3-4, 2021	Pierre

DEPARTMENT RECOMMENDATION

The proposed change allows for cancellation of campsites and lodging facilities without fee for a period of time after a reservation is made. After that period has elapsed, a fee of one-half of the first night's camping or lodging fees will be assessed for both types of overnight use.

This rule proposal helps simplify cancellation policies and associated fees by providing one cancellation procedure for campsites, and one for lodging facilities and Custer State Park French Creek Horse Camp.

SUPPORTIVE INFORMATION

The Department's cancellation policy was developed at a time of lower demand for camping and lodging facilities, and the ability to resell those facilities was more difficult. The current procedure is to assess a cancellation fee of one-night's camping or \$25 for cabins/lodges effective immediately after the reservation is made.

With the increased demand for camping and lodging facilities, the ability to fill those vacancies left by cancellations is much more likely. This change will also help the Department be more consistent with industry cancellation standards, and allow more flexibility of users to cancel a reservation without penalty due to unforeseen circumstances.

DRAFT ADMINISTRATIVE RULE CHANGES

41:03:04:05.01. Campsite reservations -- Payment of camping fees -- Cancellation

fees. Nonprofit youth groups may reserve a designated group camping area for up to 14 consecutive nights.

A person may reserve an available campsite at any state park, recreation area, or lakeside use area for up to 14 consecutive nights. After the person has occupied the campsite for 14 consecutive nights, the person shall remove the person's camper unit from the state park, recreational area, or lake side use area, by check-out time the next day, for at least one night, before reserving that site, or another site, at that location.

Camping fees set in subdivisions 41:03:04:03(1) through (3), (7) through (13), and (15) must be paid for the entire duration of a camper's anticipated stay at the time the reservation is made. A person who cancels a reservation for a campsite through the park reservation center or who cancels a reservation for a campsite ~~after~~ within 7 days of or after arrival at the park shall pay one-half of one night's camping fee for each campsite reserved. A person who cancels a reservation for a camping cabin, ~~modern cabin, lodge, suite, or rent-a-camper, or a campsite at French Creek Horse Camp in Custer State Park~~ through the park reservation center within 30 days of or after arrival at the park shall pay a \$25 cancellation fee of one-half of one night's rental or camping fee. ~~A person who cancels or shortens a reservation for a lodge more than 30 days ahead of the scheduled arrival date shall be charged a \$25 cancellation fee. A person who cancels or shortens a reservation for a lodge 30 days or fewer ahead of the scheduled arrival date shall be charged a \$25 cancellation fee for every night cancelled.~~ The department shall refund all other fees for unused days of camping or unused lodging fees except nonrefundable reservation fees.

GAME, FISH AND PARKS COMMISSION ACTION PROPOSAL

A person who is a resident of this state shall pay an additional reservation fee of \$2 for a reservation made through the park reservation center. A person who is not a resident of this state shall pay an additional reservation fee of \$7.70 for a reservation made online and shall pay \$9.70 for a reservation made through the park reservation center. The reservation fee is nonrefundable and is payable in advance.

~~At French Creek Horse Camp in Custer State Park, a person who cancels a reservation through the park reservation center shall pay one night's camping fee for each campsite reserved if the cancellation is received 30 days or more before arrival. Fifty percent of the fees shall be refunded if the cancellation is received fewer than 30 days but more than 15 days before arrival, and no refunds if the cancellation is received 15 or fewer days before arrival.~~

Source: 6 SDR 96, effective April 1, 1980; 10 SDR 76, 10 SDR 102, effective July 1, 1984; 10 SDR 120, effective July 1, 1984; 12 SDR 186, effective May 28, 1986; 13 SDR 192, effective June 22, 1987; 14 SDR 114, effective March 9, 1988; 15 SDR 139, effective March 20, 1989; 16 SDR 135, effective February 18, 1990; 17 SDR 78, effective December 10, 1990; 19 SDR 82, effective December 7, 1992; 21 SDR 102, effective December 8, 1994; 21 SDR 148, effective March 6, 1995; 22 SDR 82, effective December 10, 1995; 23 SDR 87, effective December 3, 1996; 25 SDR 108, effective February 28, 1999; 28 SDR 150, effective May 7, 2002; 32 SDR 109, effective December 27, 2005; 35 SDR 184, effective February 2, 2009; 42 SDR 97, effective January 5, 2016; 43 SDR 31, effective September 14, 2016; 46 SDR 74, effective December 2, 2019.

General Authority: SDCL [41-17-1.1\(1\)\(7\)](#).

Law Implemented: SDCL [41-2-24](#), [41-17-1.1\(1\)\(7\)](#).

RESIDENT/NONRESIDENT CRITERIA

1. The Issue
 - Why make the change, what are the change alternatives, how will public/stakeholder input be solicited, and how will the change be evaluated if implemented? The Department heard many complaints about the cancellation procedure, especially during periods of high COVID transmission. This change will affect residents and non-residents equally. However, the non-refundable non-resident reservation fee and call center fees will still apply.
2. Historical Considerations
 - Not applicable
3. Biological Considerations
 - Not applicable.
4. Social Considerations
 - Not applicable.
5. Financial considerations
 - Not applicable.

RECRUITMENT, RETENTION, REACTIVATION (R3) CRITERIA

1. Does the regulation or fee inhibit a user's ability to participate? No.
2. Does the regulation increase the opportunity for new and existing users? Yes. It lowers the amount of risk for users to book a campsite for a lodging facility according to the 90-day window.

**GAME, FISH AND PARKS COMMISSION ACTION
PROPOSAL**

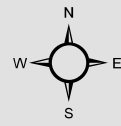
3. How does the regulation impact the next generation of hunters, anglers, trappers, and outdoor recreationists? It provides more flexibility for people that experience more uncertainty in their schedule.
4. Does the regulation enhance the quality of life for current and future generations by getting families outdoors? Yes.




FISCAL IMPACT

The Department assessed \$249,648 of cancellation fees in 2020, and \$189,678 in 2019. Factors that will affect the impact of this change also include the ability to re-book campsites for alternate dates. It is expected that this greater flexibility to make a cancellation will provide more opportunities to book lodging at other times. This proposal will also help the Department to retain customers by providing better service.

APPROVE **MODIFY** **REJECT** **NO ACTION**

Lake Vermillion Reservoir Area



-  Current Classification Boundary Line
-  Proposed Revised RA Boundary
-  Proposed Revised LUA Boundary



FY22 DOT Collector Road Funding Projects

Project	Expenses	County, Township, Park
Bush's Landing Collector Road Mag Chloride Treatment	\$38,467.40	Sully County
Pease Creek Collector Road AST & Repair	\$21,000	Charles Mix County
Platte Creek Collector Road AST & Repair	\$21,000	Charles Mix County
Sica Hollow Collector Road AST & Repair	\$41,874.34	Roberts & Marshall Counties
Swan Creek Collector Road AST & Repair	\$183,565.85	Walworth County
West Pollock Collector Road AST & Repair	\$26,340.92	Walworth County
Indian Creek Collector Road AST & Repair	\$22,085.13	Walworth County
Lake Thompson Collector Road AST & Repair	\$72,967.67	Desmet and Baker Townships
West Bend Collector Road AST & Repair	\$24,955.98	Hughes County
Elm Creek Collector Road Repair & Maintenance	\$10,677.02	Brule County
Shep's Canyon Road Asphalt Millings and Base One	\$274,475.89	Fall River County
Custer State Park Playhouse Bridge Replacement	\$289,573.78	Custer State Park
Custer State Park Wildlife Loop Road Overlay	\$1,814,890.36	Custer State Park
	\$2,800,000.00	

FY23 DOT Collector Road Projected Funding

Custer State Park Lame Johnny Road Gravel Supplement	\$50,000	Custer State Park
Custer State Park Playhouse Road Re-build- Park Section	\$700,000	Custer State Park
Custer State Park LH and Lame Johnny Road Mag Chloride	\$25,000	Custer County
Custer State Park Wildlife Loop Road Overlay Completion	\$525,000	Custer County
Custer State Park Playhouse Road AST & Repair- County Section	\$35,000	Custer County
Angostura Collector Road AST & Repair	\$130,000	Fall River County
Cow/Spring Creek Collector Road Reconstruction	\$700,000	Cow Creek and Spring Creek RA
Bush's Landing Collector Road Mag Chloride Treatment	\$40,000	Sully County
Buryanek Collector Road Repairs and Maintenance	\$55,000	Gregory County
Palisades Collector Road Widening/Prepare for Paving	\$295,000	Red Rock Township
Palisades Collector Road 485th Ave Re-build	\$200,000	Palisades Township
Elm Creek Collector Road Repairs and Maintenance	\$20,000	Brule County
Minneconju Collector Road Gravel Supplement	\$25,000	Stanley County
	\$2,800,000	

Alternate Projects

Walker's Point Collector Road Re-build	\$250,000	Lakeview Township
Shep's Canyon Collector Road Double Blotter	\$210,000	Fall River County
Sutton Bay Collector Road Double Blotter	\$600,000	Sully County
Sutton Bay Collector Road Mag Chloride Treatment	\$20,000	Sully County
Custer State Park Loop Road Bridge Repairs	\$200,000	Custer State Park
Custer State Park Collector Road Gravel Supplement Phase I	\$150,000	Custer State Park
Custer State Park Collector Road Gravel Supplement Phase II	\$150,000	Custer State Park
Custer State Park Playhouse Road Re-build- County Section	\$150,000	Custer County
Chantier Creek Collector Road Gravel Supplement	\$15,000	Stanley County
Bush's Landing Double Blotter	\$700,000	Sully County
North Point Collector Road Design	\$30,000	North Point Recreation Area

Division of Parks and Recreation
February YTD 2022 Camping by District

<i>LOCATION</i>	2021	2022	%	<i>LOCATION</i>	2021	2022	%
Pickereel Lake	45	16	-64%	Lewis & Clark	32	27	-16%
Fort Sisseton	2	6	200%	Chief White Crane	-	-	
Roy Lake	113	137	21%	Pierson Ranch	-	-	
Sica Hollow	-	-		Springfield	-	-	
DISTRICT 1	160	159	-1%	Sand Creek	-	-	
Richmond Lake	4	1		Tabor	-	-	
Mina Lake	68	-	-100%	DISTRICT 9	32	27	-16%
Fisher Grove	-	8		North Point	1	11	
Amsden	-	-		North Wheeler	-	-	
Lake Louise	5	10	100%	Pease Creek	-	6	
DISTRICT 2	77	19	-75%	Randall Creek	-	-	
Pelican Lake	1	2	100%	South Shore	-	-	
Sandy Shore	5	1		South Scalp	-	-	
Lake Cochrane	7	-	-100%	Whetstone	-	-	
Hartford Beach	25	33	32%	White Swan	-	-	
DISTRICT 3	38	36	-5%	DISTRICT 10	1	17	1600%
Oakwood Lakes	16	7	-56%	Farm Island	12	6	-50%
Lake Poinsett	9	11	22%	West Bend	7	31	
Lake Thompson	62	27	-56%	DISTRICT 11	19	37	95%
DISTRICT 4	87	45	-48%	Oahe Downstream	6	10	67%
Lake Herman	7	6	-14%	Cow Creek	7	-	-100%
Walker's Point	7	2	-71%	Okobojo	-	2	
Lake Carthage	-	-		Spring Creek	-	25	
DISTRICT 5	14	8	-43%	DISTRICT 12	13	37	185%
Snake Creek	7	10	43%	West Whitlock	-	-	
Platte Creek	-	1		East Whitlock	-	-	
Buryanek	3	14		Swan Creek	-	-	
Burke Lake	-	-		Indian Creek	18	11	-39%
DISTRICT 6	10	25	150%	Lake Hiddenwood	-	-	
Palisades	48	93	94%	Walth Bay	-	-	
Big Sioux	24	20	-17%	West Pollock	11	4	-64%
Lake Vermillion	29	26	-10%	DISTRICT 13	29	15	-48%
DISTRICT 7	101	139	38%	Bear Butte	-	2	
Newton Hills	37	44	19%	DISTRICT 14	-	2	#DIV/0!
Good Earth	-	-		Shadehill	18	22	22%
Union Grove	3	2	-33%	Llewellyn Johns	-	1	
DISTRICT 8	40	46	15%	Rocky Point	18	13	-28%
				DISTRICT 15	36	36	0%
				Custer	52	40	-23%
				DISTRICT 16	52	40	-23%
				Angostura	10	26	160%
				Sheps Canyon	2	-	-100%
				DISTRICT 17	12	26	117%
				TOTAL YTD	721	714	-1%
				TOTAL for Month	248	353	42%

Division of Parks and Recreation							
February YTD 2022 Visitation by District							
LOCATION	2020	2021	%	LOCATION	2020	2021	%
Pickerel Lake	2,001	1,231	-38%	Lewis & Clark	87,927	52,824	-40%
Fort Sisseton	3,425	1,933	-44%	Chief White Crane	13	-	
Roy Lake	9,517	6,779	-29%	Pierson Ranch	2,796	3,257	16%
Sica Hollow	5,354	-		Springfield	12,939	15,109	17%
DISTRICT 1	20,297	9,943	-51%	DISTRICT 9	103,675	71,190	-31%
Richmond Lake	3,911	2,445	-37%	North Point	3,267	4,059	24%
Mina Lake	2,311	1,608	-30%	North Wheeler	617	1,990	223%
Fisher Grove	256	460	80%	Pease Creek	875	864	-1%
Lake Louise	2,785	1,893	-32%	Randall Creek	3,144	3,033	-4%
DISTRICT 2	9,263	6,406	-31%	Fort Randall Marina	64	50	
Pelican Lake	4,274	3,320	-22%	DISTRICT 10	7,967	9,996	25%
Sandy Shore	1,860	1,733	-7%	Farm Island	19,595	14,073	-28%
Lake Cochrane	403	322	-20%	West Bend	842	1,440	71%
Hartford Beach	24,187	17,058	-29%	LaFramboise Island	11,993	10,682	-11%
DISTRICT 3	30,724	22,433	-27%	DISTRICT 11	32,430	26,195	-19%
Oakwood Lakes	2,770	2,357	-15%	Oahe Downstream	27,466	24,676	-10%
Lake Poinsett	3,320	2,540	-23%	Cow Creek	17,141	19,104	11%
Lake Thompson	6,495	4,081	-37%	Okobojo	4,338	4,502	4%
DISTRICT 4	12,585	8,978	-29%	Spring Creek	13,904	20,170	45%
Lake Herman	7,981	7,374	-8%	DISTRICT 12	62,849	68,452	9%
Walker's Point	2,456	2,291	-7%	West Whitlock	1,072	1,117	4%
DISTRICT 5	10,437	9,665	-7%	Swan Creek	1,201	1,417	18%
Snake Creek	4,535	10,602	134%	Indian Creek	4,234	4,629	9%
Platte Creek	3,259	6,782	108%	Lake Hiddenwood	-	-	
Buryanek	2,708	4,845	79%	Revheim Bay	8,940	9,360	5%
Burke Lake	2,808	2,097	-25%	West Pollock	7,357	6,750	-8%
DISTRICT 6	13,310	24,326	83%	DISTRICT 13	22,804	23,273	2%
Palisades	6,645	6,164	-7%	Bear Butte	1,623	1,284	-21%
Big Sioux	3,619	4,014	11%	DISTRICT 14	1,623	1,284	-21%
Beaver Creek	2,659	2,679	1%	Shadehill	2,717	1,985	-27%
Lake Vermillion	6,489	4,812	-26%	Llewellyn Johns	278	261	-6%
DISTRICT 7	19,412	17,669	-9%	Little Moreau	2,044	1,460	-29%
Newton Hills	6,431	6,207	-3%	Rocky Point	3,135	3,231	3%
Good Earth	14,021	10,449	-25%	DISTRICT 15	8,174	6,937	-15%
Union Grove	1,280	1,258	-2%	Custer	91,043	94,755	4%
Lake Alvin	5,028	5,015	0%	DISTRICT 16	91,043	94,755	4%
Spirit Mound	1,781	1,908	7%	Angostura	7,521	6,042	-20%
Adams	2,099	2,490	19%	Sheps Canyon	1,636	1,176	-28%
DISTRICT 8	30,640	27,327	-11%	DISTRICT 17	9,157	7,218	-21%
				TOTAL YTD	486,390	436,047	-10%
				TOTAL for Month	237,504	204,217	-14%

Division of Parks and Recreation					
February Revenue by Item					
	2021		2022		%
	Number	Dollar	Number	Dollar	Change
Annual	776	\$ 27,942	1,192	\$ 42,912	54%
2nd Annual	64	\$ 1,152	103	\$ 1,854	61%
Combo	907	\$ 48,978	1,396	\$ 75,384	54%
Transferable	83	\$ 6,640	110	\$ 8,800	33%
Daily License	561	\$ 4,488	538	\$ 4,304	-4%
Unattended Vehicle Daily	17	\$ 260	7	\$ 105	-60%
GSM Annual Trail Pass	115	\$ 1,725	135	\$ 2,025	17%
GSM Daily Trail Pass	118	\$ 472	142	\$ 568	20%
Motorcoach Permit	2	\$ 6	85	\$ 255	4150%
CSP 7 Day Pass	448	\$ 8,968	457	\$ 9,140	2%
CSP 7 Day Bike Pass	-	\$ -	-	\$ -	
Rally Bike Band	-			\$ -	
One-Day Special Event		\$ 250	0	\$ -	-100%
PERMITS	3,092	\$ 100,881	4,165	\$ 145,347	44%
Camping Services		\$ 1,135,120		\$ 1,132,452	0%
Picnic Reservations		\$ 390		\$ 40	-90%
Firewood	15	\$ 90	7	\$ 42	-53%
Gift Card		\$ 1,435		\$ 1,451	1%
LODGING	15	\$ 1,137,035	7	\$ 1,133,985	0%
TOTAL	3,107	\$ 1,237,916	4,172	\$ 1,279,332	3%

Division of Parks and Recreation					
February YTD 2022 Revenue by Item					
	2021		2022		%
	Number	Dollar	Number	Dollar	Change
Annual	1,565	\$ 56,348	2,583	\$ 92,992	65%
2nd Annual	145	\$ 2,610	176	\$ 3,168	21%
Combo	1,585	\$ 85,590	2,518	\$ 135,972	59%
Transferable	144	\$ 11,492	192	\$ 15,360	34%
Daily License	1,236	\$ 9,884	1,184	\$ 9,472	-4%
Unattended Vehicle Daily	82	\$ 1,235	13	\$ 195	-84%
GSM Annual Trail Pass	252	\$ 3,780	252	\$ 3,780	0%
GSM Daily Trail Pass	221	\$ 884	210	\$ 840	-5%
Motorcoach Permit	43	\$ 130	85	\$ 255	96%
CSP 7 Day Pass	1,368	\$ 27,364	969	\$ 19,380	-29%
CSP 7 Day Bike Band	-	\$ -	-	\$ -	
Rally Bike Band	13	\$ 250	-	\$ -	-100%
One-Day Special Event		\$ -		\$ -	
PERMITS	6,654	\$ 199,567	8,182	\$ 281,414	41%
Camping Services		\$ 2,719,620		\$ 1,433,682	-47%
Picnic Reservations		\$ 2,200		\$ 200	-91%
Firewood	35	\$ 210	30	\$ 180	-14%
Gift Card		\$ 2,575		\$ 3,113	21%
LODGING	35	\$ 2,724,605	30	\$ 1,437,175	-47%
TOTAL	6,689	\$ 2,924,172	8,212	\$ 1,718,589	-41%

RESOLUTION 22 - 28

WHEREAS, the Department of Game, Fish and Parks (Department) has worked to develop and improve access opportunities for hunters, anglers, and park visitors at our agency building facilities, our public fishing areas, our boat ramps, our water access facilities, our campgrounds, our trails, and other public use facilities associated with our State Park System; and

WHEREAS, approximately 12.26%¹ of all South Dakotans suffer from a mobility disability; and

WHEREAS, the Department is continually striving to improve access to outdoor recreational opportunities for all members of the public, but especially for those individuals with disabilities and mobility issues; allowing them to safely and comfortably enjoy outdoor recreational opportunities of all kinds across our state; and

WHEREAS, Rollyn H. Samp (Rolly), an avid South Dakota hunter, angler, outdoorsman, conservationist, and mentor, with a long history of working for and collaborating with various government and charitable entities, suffers from cerebral ataxia, a disease where he feels like he is falling.

WHEREAS, Rolly had the opportunity to utilize a special mobility “track chair” during a 2020 family vacation where he was able to hike and fish in the Grace Coolidge Fishing Area and enjoy a family fishing trip to Center Lake in the Black Hills of SD; and

WHEREAS, Rolly and his granddaughter Margaret K. Samp submitted a very sincere and heart-warming cover story published in SD Conservation Digest sharing the positive experience he and his family had because of their ability to access the track chair; and

WHEREAS, following the publishing of this story, Rolly, his son Michael, and their family approached the Department and have expressed a strong desire to help ensure all South Dakotans challenged with mobility issues can enjoy similar outdoor experiences with their families and friends; and

WHEREAS, with the goal of helping the Department raise funds to provide additional track chairs and to help the Department market, promote, the future availability of additional track chairs enabling even more individuals with mobility challenges the opportunities to gain access to the outdoors by placing additional track chairs at various State Parks, Recreation Areas and Regional Wildlife Office facilities geographically dispersed across South Dakota; and

WHEREAS, both the Department and the SD Game Fish and Parks Commission (Commission) wish to recognize and support this benevolent offer brought forth by the Samp Family to help improve access to the outdoors for those with mobility challenges; and

WHEREAS, the Samp Family has a long history of involvement as well as expertise in fundraising for charitable and benevolent causes; and

¹ SD Department of Public Safety – 109,814 disability parking placards issued in 2021,
US Census Bureau, July 2021 – SD Population 895,376

WHEREAS, the Commission has also expressed a strong desire to help foster additional outdoor recreational opportunities for all South Dakotans; the Commission rises to strongly support this effort by the Samp Family.

NOW, THEREFORE, BE IT RESOLVED, the Department and Commission wish to formally support, encourage, collaborate, and do hereby authorize this benevolent fundraising effort by the Samp Family through this formal Commission Resolution in an effort to ensure access to South Dakota's rich outdoor heritage for those citizens with mobility challenges well into the future.

RESOLUTION 22-04

Whereas, the Department of Game, Fish and Parks (DEPARTMENT) desires to acquire real property (PROPERTY) presently owned by the South Dakota Parks and Wildlife Foundation (FOUNDATION), which PROPERTY is legally described as:

Government Lots 3 and 4 in Section 3 of Township 3 North, Range 8 East of the Black Hills Meridian, Meade County, South Dakota; and the W $\frac{1}{2}$ of Section 34 in Township 4 North, Range 8 East of the Black Hills Meridian, Meade County, South Dakota, less a portion of subject property as conveyed in the Quit Claim Deed recorded in Book 140 on Page 265, containing 400 acres, more or less; and

Whereas, said PROPERTY is to be acquired and utilized by DEPARTMENT for the purpose of developing a public shooting range; and

Whereas, DEPARTMENT has evaluated the PROPERTY and determined it is suitable for developing a public shooting range; and

Whereas, SDCL 41-4-1.1 requires before purchasing property, DEPARTMENT notify adjacent owners of land to the property being acquired by publishing notice once in each legal newspaper of the county in which the property to be purchased is located; and

Whereas, DEPARTMENT has published the required legal notice 30 days prior to the date of action by the Game, Fish and Parks Commission (COMMISSION) authorizing the intended purchase, which notice included the meeting time and location at which COMMISSION action is expected and by giving notice of instructions for presenting oral and written comments to the COMMISSION; and

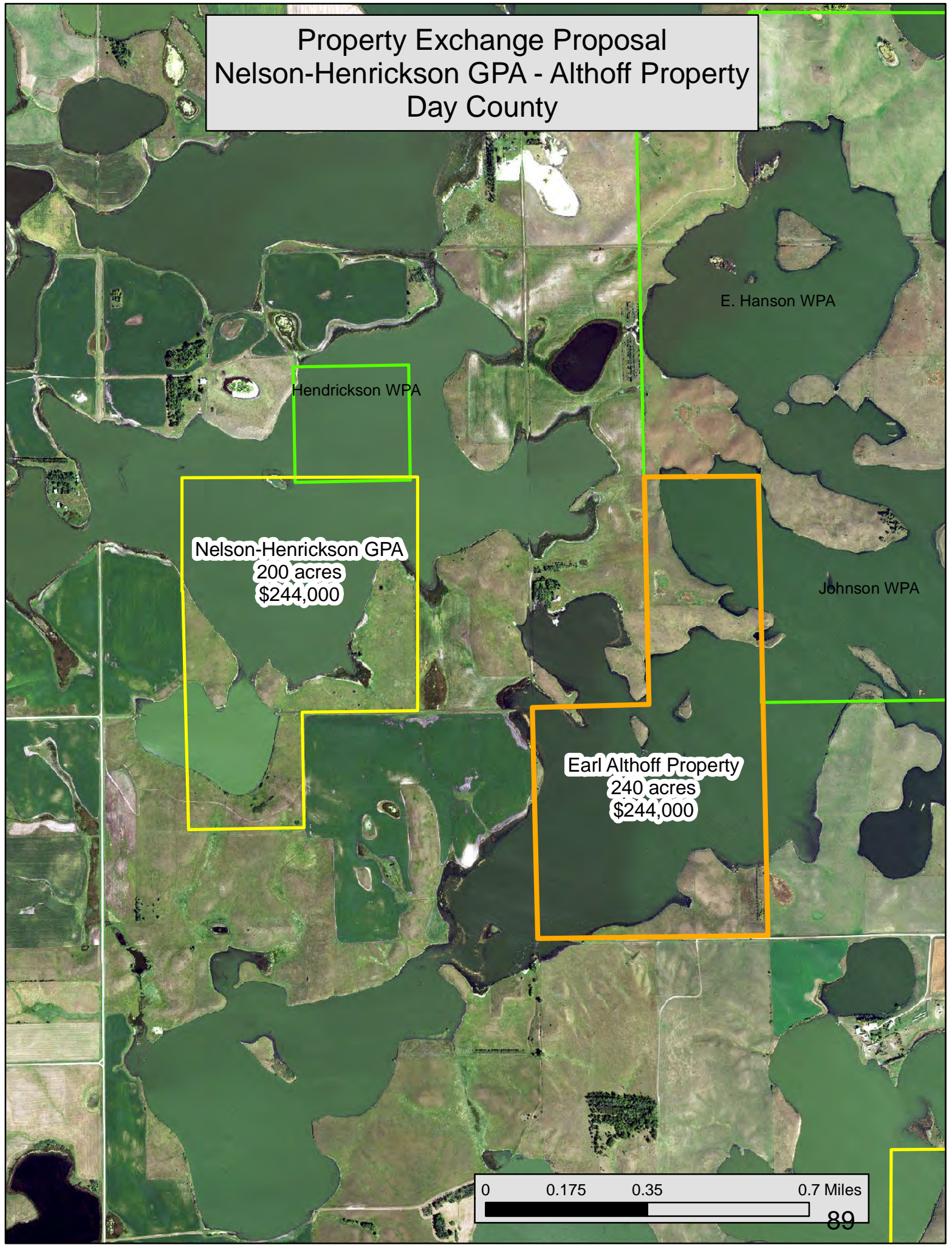
Whereas, the COMMISSION has reviewed any comments received relative to the intended purchase, and after consideration of the same, the COMMISSION approves the purchase of said property for developing a public shooting range.

Now, therefore, be it resolved, the DEPARTMENT is authorized to purchase the PROPERTY from the FOUNDATION at the price of \$900,000.00 plus all associated costs incurred by the FOUNDATION from its purchase and holding of the PROPERTY, including real estate taxes, closing costs, and estimated loss of income on investments liquidated for its purchase and holding of the PROPERTY, with the purchase by DEPARTMENT to be completed on or before April 30, 2022.

EXISTING SITE | SITE LOCATION



Property Exchange Proposal Nelson-Henrickson GPA - Althoff Property Day County



Hendrickson WPA

E. Hanson WPA

Nelson-Henrickson GPA
200 acres
\$244,000

Johnson WPA

Earl Althoff Property
240 acres
\$244,000



License Sales Totals

(as of Feb 23)

date updated: 23 Feb 2022

Resident	2019	2020	2021	3-yr Avg	2022	2022		+/- Licenses		+/- Revenue		% Change from 3-yr Avg
						Revenue		2021 vs 2022	3-yr Avg vs 2022	2021 vs 2022	3-yr Avg vs 2022	
Combination	14,990	17,002	18,126	16,706	23,559	\$ 1,295,745		5,433	6,853	\$ 298,815	\$ 376,915	41%
Junior Combination	1,013	1,212	1,331	1,185	0	\$ -		-1,331	-1,185	\$ (35,937)	\$ (32,004)	-100%
Senior Combination	3,553	4,136	4,854	4,181	5,651	\$ 226,040		797	1,470	\$ 31,880	\$ 58,800	35%
Small Game	671	656	897	741	1,768	\$ 58,344		871	1,027	\$ 28,743	\$ 33,880	138%
Youth Small Game	308	354	403	355	583	\$ 2,915		180	228	\$ 900	\$ 1,140	64%
1-Day Small Game	234	191	335	253	141	\$ 1,692		-194	-112	\$ (2,328)	\$ (1,348)	-44%
Migratory Bird Certificate	6,262	6,810	6,772	6,615	3,435	\$ 17,175		-3,337	-3,180	\$ (16,685)	\$ (15,898)	-48%
Predator/Varmint	543	555	495	531	942	\$ 4,710		447		\$ 2,235	\$ 2,055	77%
Furbearer	1,765	1,925	2,272	1,987	2,271	\$ 68,130		-1	284	\$ (30)	\$ 8,510	14%
Annual Fishing	6,451	8,119	7,778	7,449	11,611	\$ 325,108		3,833	4,162	\$ 107,324	\$ 116,527	56%
Senior Fishing	1,582	1,964	2,188	1,911	2,764	\$ 33,168		576	853	\$ 6,912	\$ 10,232	45%
1-Day Fishing	323	437	418	393	410	\$ 3,280		-8	17	\$ (64)	\$ 139	4%
RESIDENT TOTALS =	37,695	43,361	45,869	42,308	53,135	\$ 2,036,307		7,266	10,827	\$ 421,765	\$ 558,947	25.6%

Nonresident	2019	2020	2021	3-yr Avg	2022	2022		+/- Licenses		+/- Revenue		% Change from 3-yr Avg
						Revenue		2021 vs 2022	3-yr Avg vs 2022	2021 vs 2022	3-yr Avg vs 2022	
Small Game	2,414	2,487	5,093	3,331	4,092	\$ 495,132		-1,001	761	\$ (121,121)	\$ 92,041	23%
Youth Small Game	103	109	211	141	267	\$ 2,670		56	126	\$ 560	\$ 1,260	89%
Annual Shooting Preserve	19	29	47	32	48	\$ 5,808		1	16	\$ 121	\$ 1,976	52%
5-day Shooting Preserve	364	484	523	457	666	\$ 50,616		143	209	\$ 10,868	\$ 15,884	46%
1-day Shooting Preserve	132	143	128	134	143	\$ 6,578		15	9	\$ 690	\$ 399	6%
Spring Light Goose	84	94	153	110	216	\$ 10,800		63	106	\$ 3,150	\$ 5,283	96%
Youth Spring Light Goose	2	0	7	3	9	\$ 234		2	6	\$ 52	\$ 156	200%
Migratory Bird Certificate	20	35	49	35	73	\$ 365		24	38	\$ 120	\$ 192	111%
Predator/Varmint	536	510	534	527	484	\$ 19,360		-50	-43	\$ (2,000)	\$ (1,707)	-8%
Furbearer	5	5	3	4	3	\$ 825		0	-1	\$ -	\$ (367)	-31%
Annual Fishing	3,687	4,247	5,725	4,553	8,344	\$ 559,048		2,619	3,791	\$ 175,473	\$ 253,997	83%
Family Fishing	1,110	1,235	1,515	1,287	0	\$ -		-1,515	-1,287	\$ (101,505)	\$ (86,207)	-100%
Youth Annual Fishing	161	169	227	186	0	\$ -		-227	-186	\$ (5,675)	\$ (4,642)	-100%
3-Day Fishing	2,462	2,506	2,321	2,430	2,623	\$ 97,051		302	193	\$ 11,174	\$ 7,153	8%
1-Day Fishing	1,040	1,305	2,554	1,633	3,458	\$ 55,328		904	1,825	\$ 14,464	\$ 29,200	112%
NONRESIDENT TOTALS =	12,139	13,358	19,090	14,862	20,426	\$ 1,303,815		1,336	5,564	\$ (13,629)	\$ 314,619	37.4%
GRAND TOTALS =	49,834	56,719	64,959	57,171	73,561	\$ 3,340,122		8,602	16,390	\$ 408,136	\$ 873,566	28.7%

	2021	2022	+/- Licenses	+/- Revenue	2022 Revenue
Resident Habitat Stamp	37,279	48,393	11,114	\$ 111,140	\$ 483,930
Nonresident Habitat Stamp	16,170	17,427	1,257	\$ 31,425	\$ 435,675
Totals =	53,449	65,820	12,371	\$ 142,565	\$ 919,605