

# **BLACK HILLS DEER**

There were 5,193 single-tag licenses issued for the 2020 Black Hills Deer season (4,850 resident, 343 nonresident), and 17 single-tag and 22 double-tag licenses issued for the Landowner Own Land Black Hills season.

All regular season hunters were surveyed and 3,148 (61%) responded. All 39 Landowner Own Land hunters were surveyed and 15 (38%) responded.

The season ran the month of November, a total of 30 days. Those responding reported hunting an average of 4.87 days, which projected to 25,212 recreation days for the season. The mean satisfaction score for all combined units was 5.44 on a scale ranging from 1 = "very dissatisfied" to 7 = "very satisfied".

The harvest projection for the Black Hills Deer and Landowner Black Hills Deer seasons was 3,307 deer (2,198 adult whitetail bucks, 113 fawn whitetail bucks, 817 adult whitetail does, 92 fawn whitetail does, 81 adult mule deer bucks, and 7 adult mule deer does. The overall season harvest success rate was 63%.

Including the estimated Black Hills harvest of 2,318 deer from the Archery, Apprentice, Mentored Youth, and Muzzleloader seasons, approximately 5,626 deer were harvested in the Black Hills proper.

Harvest summaries for the 2012-2020 Black Hills Deer seasons (including Landowner Own Land)

YEAR	Licenses Sold		Bucks				Harvest Does			Avg Days Hunted	Avg Satis
	Resident	Nonres	WT	Mule	WT	Mule	Total	Success			
2012	3,337	243	2,008	88	289	6	2,391	67%	4.23	5.22	
2013	3,330	261	1,912	62	318	2	2,294	64%	4.68	5.27	
2014	3,242	252	2,076	59	275	0	2,410	69%	4.82	5.48	
2015	3,741	294	2,533	74	307	2	2,917	72%	4.61	5.75	
2016	4,120	325	2,604	86	505	2	3,198	72%	4.38	5.76	
2017	4,319	343	2,616	79	630	0	3,325	71%	4.39	5.76	
2018	4,366	344	2,260	86	643	12	3,001	64%	4.54	5.52	
2019	4,838	375	2,258	57	847	0	3,161	60%	4.09	5.50	
2020	4,889	343	2,311	81	909	7	3,307	63%	4.87	5.44	

## 2020 Black Hills Deer Harvest Projections

Last Revised: 7-Apr-21

Unit/Type	Licenses										Harvest Projections										Total Deer	Mean Satisfctn Score	Avg Days Hunted
	Resident					Nonresident					Hunter Resp.	Tag Success	Whitetail				Mule Deer						
	Appl. 1st Choice *	Avail.	Sold	Appl. 1st Choice *	Avail.	Sold	Hunters	Resp.	Success	Success			Bucks Adult	Fawn Adult	Does Adult	Fawn Adult	Bucks Adult	Fawn Adult	Does Adult	Fawn Adult			
BH1-01	3,326	200	217	499	16	14	229	59%	58%	58%	51	0	2	0	75	0	7	0	135	+/-12	5.38	5.30	
BH1-11	8,670	3,500	3,525	1,016	280	250	3,733	62%	64%	64%	2,132	39	217	18	0	0	0	0	2,405	+/-45			
BD1-13	375	1,000	1,007	48	80	72	1,068	58%	61%	61%	0	66	518	71	0	0	0	0	655	+/-27	5.63	3.52	
BD2-13	90	100	101	9	8	7	108	69%	74%	74%	0	9	69	3	0	0	0	0	80	+/-6	5.77	2.54	
<b>Totals</b>	<b>12,461</b>	<b>4,800</b>	<b>4,850</b>	<b>1,572</b>	<b>384</b>	<b>343</b>	<b>5,138</b>	<b>61.3%</b>	<b>63%</b>	<b>63%</b>	<b>2,183</b>	<b>113</b>	<b>806</b>	<b>92</b>	<b>75</b>	<b>0</b>	<b>7</b>	<b>0</b>	<b>3,275</b>	<b>+/-90</b>	<b>5.44</b>	<b>4.87</b>	

The response rate for all units combined is: 61.3%

Satisfaction scale of 1=very dissatisfied to 7=very satisfied.

\* Number of 1st drawing applicants with that season as 1st choice.

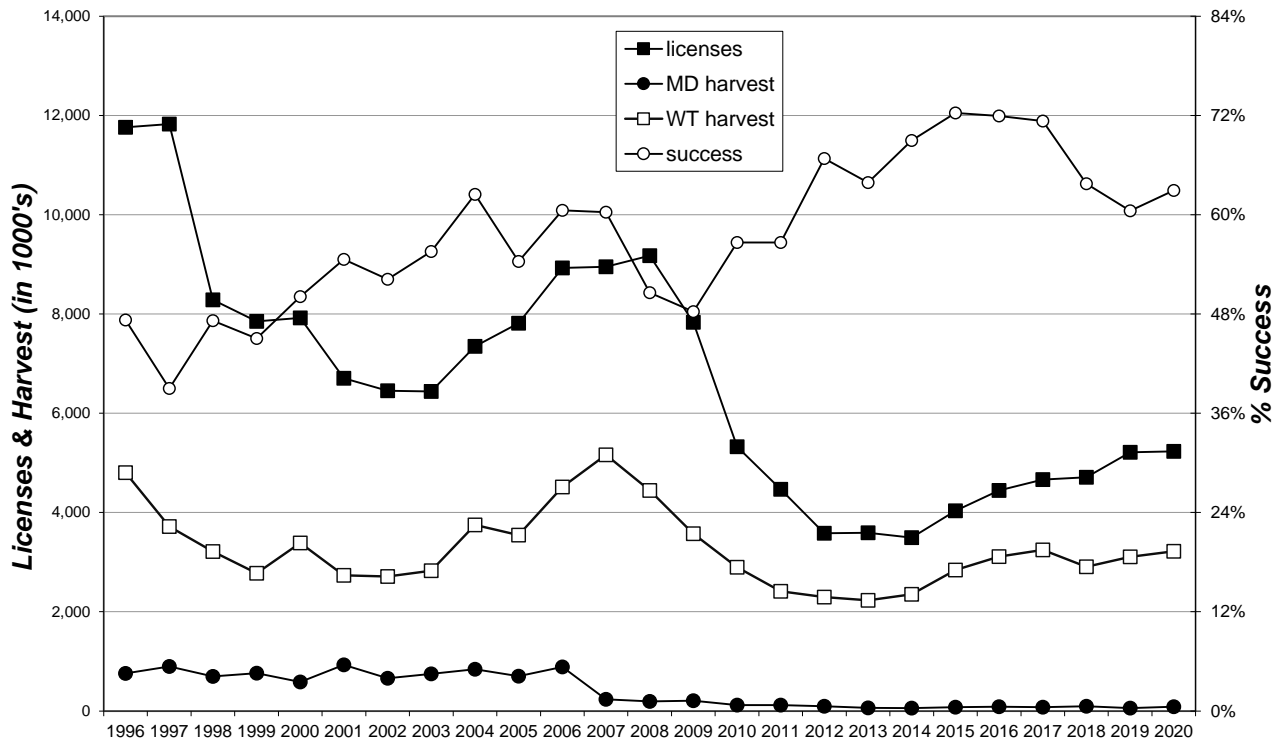
## 2020 Black Hills Landowner Own Land Harvest Projections

Last Revised:

09-Apr-21

Unit	Licenses										Harvest Projections										Total Deer Harvest	Mean Satisfactn Rating	Average Days Hunted
	Resident Licenses			Nonresident Licenses			Response Rate	Hunter Success	Tag Success	Whitetail				Mule Deer									
	Avail.	Sold	Tags sold	Avail.	Sold	Rate				Bucks Adult	Fawn Adult	Does Adult	Fawn Adult	Bucks Adult	Fawn Adult	Does Adult	Fawn Adult						
BH1-01	Unitd	17	17	0	0	29%	20%	20%	0	0	0	0	3	0	0	0	0	3	-	-			
BH1-08	Unitd	22	44	0	0	45%	80%	65%	15	0	11	0	2	0	0	0	0	29	-	-			
<b>Totals</b>		<b>39</b>	<b>61</b>	<b>0</b>	<b>0</b>	<b>38.5%</b>	<b>60%</b>	<b>52%</b>	<b>15</b>	<b>0</b>	<b>11</b>	<b>0</b>	<b>6</b>	<b>0</b>	<b>0</b>	<b>0</b>	<b>0</b>	<b>32</b>	<b>5.23</b>	<b>4.62</b>			

## Black Hills Deer 1996-2020



## Black Hills Deer Harvest 1996-2020

