

# ARCHERY ELK

A total of 204 resident licenses were issued for the 2020 Archery Elk season. All license holders were sent a survey at the end of the season and 187 responded for a 92% response rate. Approximately 89% responded through the Internet.

Respondents reported hunting an average of 11.24 days for a total of 2,293 days of recreation for the season. The projected harvest was 80 bulls and 12 cows for an overall success rate of 45%.

Hunter satisfaction was based on a numerical scale from 1 (very dissatisfied) to 7 (very satisfied) and averaged 5.90 for the season. Approximately 93% of responding hunters reported hunting on public land, 4% on private land they did not own, and 3% on private land they owned.

Prior to 2002 it was assumed that any hunter that did not report harvesting an elk at the mandatory check-in was unsuccessful, and success was measured by dividing the number of hunters that reported harvesting an elk by the total number of tags issued.

## Summary comparison of the 2011-2020 Archery Elk seasons

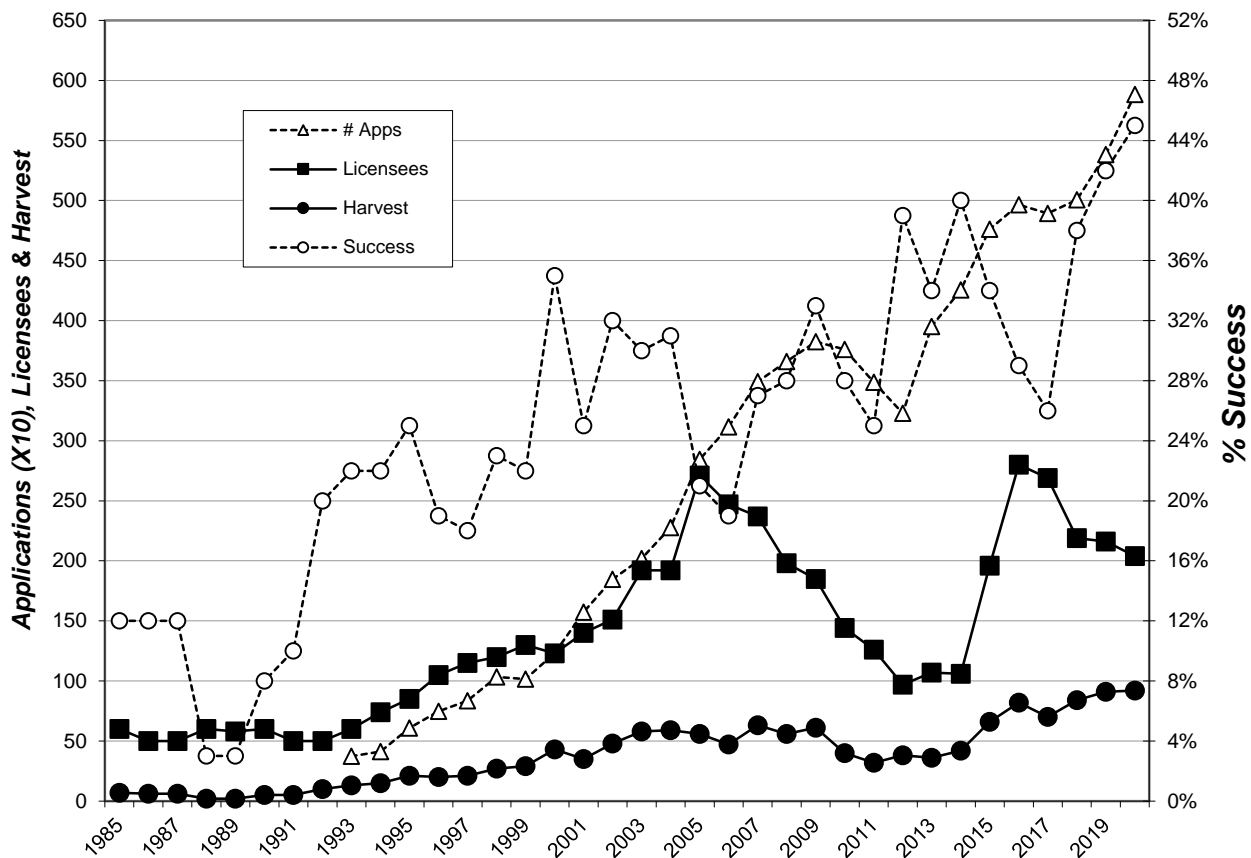
Year	# Apps 1 <sup>st</sup> Choice	Licenses Sold	Harvest			Success Rate	Avg. Days Hunted	Average Satisfaction
			Bulls	Cows	Total			
2011	3,486	126	24	8	32	25%	11.42	5.01
2012	3,228	97	33	4	38	39%	11.94	5.34
2013	3,952	107	33	3	36	34%	11.97	5.59
2014	4,256	106	38	4	42	40%	11.68	5.61
2015	4,761	196	55	12	66	34%	11.74	5.39
2016	4,965	280	57	25	82	29%	11.11	5.40
2017	4,892	269	50	20	70	26%	11.29	5.60
2018	5,006	219	65	19	84	38%	11.70	5.50
2019	5,382	216	77	14	91	42%	11.08	5.61
2020	5,884	204	80	12	92	45%	11.24	5.90

## 2020 Archery Elk Harvest Projections

*Last Revised: 29 March 2021*

Unit/Type	Resident Licenses					Harvest Projections							Elk Shot Not Recovered	Avg Satisfctn Score	Avg Days Hunted	Land Hunted Most		
	Appl. 1 <sup>st</sup> Choice *	Avail.	Sold	Resp.	Success	Bulls	Cows	Calves	Cow Calves	Total Elk Harvested	CI (95%)	Public				Own	Other Private	
H1A-21	756	20	17	94%	63%	10	1	0	0	11	+/-1	4	6.6	13.6	16	0	0	
H1A-23	20	10	8	88%	29%	0	2	0	0	2	+/-1	3	6.5	5.0	7	0	0	
H2A-21	4,081	80	80	96%	64%	49	1	1	0	51	+/-2	18	6.2	12.1	79	0	1	
H2A-23	78	40	37	86%	6%	0	2	0	0	2	+/-1	7	5.8	8.4	29	0	1	
H3A-21	687	35	32	88%	57%	17	1	0	0	18	+/-2	7	5.3	13.7	22	6	3	
H3A-23	17	20	19	95%	22%	0	4	0	0	4	+/-1	1	5.5	6.7	14	0	2	
H5A-21	57	2	2	100%	50%	1	0	0	0	1	+/-0	0	5.5	19.0	2	0	0	
H7A-21	188	10	9	78%	29%	3	0	0	0	3	+/-1	1	5.0	16.1	9	0	0	
<b>Totals</b>	<b>5,884</b>	<b>217</b>	<b>204</b>	<b>91.7%</b>	<b>45.2%</b>	<b>79</b>	<b>12</b>	<b>1</b>	<b>0</b>	<b>92</b>	<b>+/- 9</b>	<b>41</b>	<b>5.90</b>	<b>11.24</b>	<b>178</b>	<b>5</b>	<b>8</b>	
The response rate for all units combined is:					91.7%													
Satisfaction scale of 1=very dissatisfied to 7=very satisfied.																		
* Number of 1st drawing applicants with that unit as 1st choice.																		
															93%	3%	4%	

# Archery Elk 1985-2020



# **BLACK HILLS FIREARM ELK**

A total of 926 licenses were issued for the 2020 Black Hills Firearm Elk season. All license holders were sent a survey at the end of the season and 730 responded for a 79% response rate. Approximately 89% responded through the Internet.

Respondents reported hunting an average of 5.35 days which projects to a total of 4,954 days of recreation for the season. The projected harvest was 360 bulls and 224 cows for an overall success rate of 63%.

Hunter satisfaction was based on a numerical scale from 1 (very dissatisfied) to 7 (very satisfied) and averaged 5.33 for the season. Approximately 79% of responding hunters reported hunting on public land, 14% on private land they did not own, and 7% on private land they owned.

Prior to 2002 it was assumed that any hunter that did not report harvesting an elk at the mandatory check in was unsuccessful, and success was measured by dividing the number of hunters that reported harvesting an elk by the total number of tags issued.

## Summary comparison of the 2011-2020 Black Hills Firearm Elk seasons

<b>Year</b>	<b># Apps 1<sup>st</sup> Choice</b>	<b>Licenses Sold</b>	<b>Harvest</b>			<b>Success Rate</b>	<b>Avg. Days Hunted</b>	<b>Average Satisfaction</b>
			<b>Bulls</b>	<b>Cows</b>	<b>Total</b>			
2011	11,031	866	299	173	472	55%	6.80	4.64
2012	9,665	570	291	125	416	73%	6.37	5.30
2013	11,274	620	272	103	374	60%	6.63	4.65
2014	11,461	664	295	178	472	71%	5.85	5.46
2015	12,126	922	312	345	657	71%	6.66	5.54
2016	12,692	1,745	363	724	1,087	62%	4.59	5.42
2017	12,201	1,581	364	682	1,047	66%	4.77	5.50
2018	11,871	1,124	315	402	717	64%	5.08	5.36
2019	12,396	1,108	332	354	686	62%	5.00	5.48
2020	13,198	926	360	224	585	63%	5.35	5.33

# 2020 Black Hills Firearm Elk Harvest Projections

Last Revised: 29 March 2021

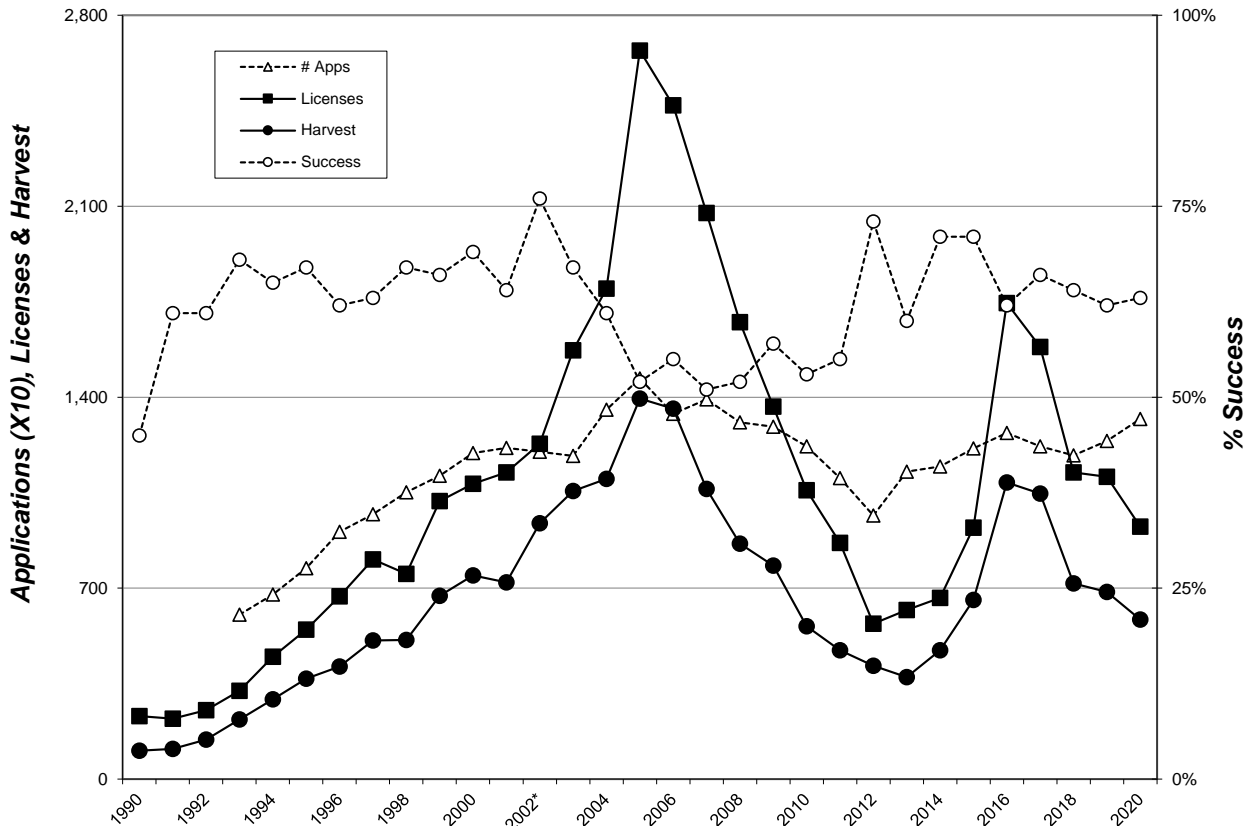
Unit/Type	Resident Licenses					Harvest Projections						Elk Shot Not Recovered	Avg Satisfctn Score	Avg Days Hunted	Land Hunted Most		
	Appl. 1st					Bulls	Cows	Bull		Total Elk Harvested	CI (95%)				Public	Own	Other
	Choice *	Avail.	Sold	Resp.	Success			Calves	Calves								
H1A-21	1,293	50	49	82%	83%	39	1	0	0	40	+/-3	2	5.90	5.9	44	2	2
H1B-23	56	15	15	80%	67%	0	9	0	1	10	+/-2	0	4.58	6.6	15	0	0
H2A-21	9,006	240	237	92%	87%	197	9	0	0	205	+/-3	20	6.20	5.7	219	10	3
H2B-23	258	25	22	86%	68%	0	14	0	1	15	+/-2	2	5.95	4.9	21	0	1
H2E-23	248	50	49	90%	43%	0	20	0	1	21	+/-2	1	4.83	7.0	47	0	0
H2H-23	4	5	5	60%	67%	0	3	0	0	3	+/-2	0	6.33	6.3	5	0	0
H2I-23	9	15	15	87%	8%	0	1	0	0	1	+/-1	0	2.25	5.8	13	0	1
H2J-23	5	15	15	87%	46%	0	7	0	0	7	+/-2	0	5.18	2.7	12	0	1
H3A-21	1,645	100	99	81%	80%	74	4	0	1	79	+/-4	5	5.66	5.3	56	33	9
H3B-23	31	30	29	86%	36%	0	9	1	0	10	+/-2	1	4.54	6.3	27	0	1
H3C-23	8	30	30	67%	25%	0	8	0	0	8	+/-3	0	4.85	5.7	29	2	0
H3D-23	6	30	29	69%	30%	0	9	0	0	9	+/-3	0	4.58	4.1	26	0	1
H3E-23	29	60	58	50%	45%	0	20	0	6	26	+/-7	0	5.25	4.7	42	0	14
H3F-23	14	60	59	78%	39%	1	21	0	1	23	+/-4	3	4.17	4.0	36	1	17
H3G-23	1	60	60	83%	32%	0	16	2	1	19	+/-3	2	3.92	4.5	53	0	6
H4A-21	76	20	20	35%	100%	20	0	0	0	20	+/-0	0	5.86	3.3	0	3	17
H4B-23	11	40	40	73%	62%	0	21	1	3	25	+/-4	1	5.25	4.1	6	3	30
H5A-21	74	5	5	80%	75%	3	1	0	0	4	+/-1	0	4.25	15.3	3	3	0
H7A-21	334	20	20	40%	75%	10	5	0	0	15	+/-5	0	6.00	8.4	18	3	0
H7B-23	25	15	15	73%	64%	0	7	0	3	10	+/-2	1	5.82	6.2	14	0	1
H9A-21	63	15	15	53%	88%	11	0	0	2	13	+/-2	0	5.13	6.5	0	4	11
H9B-23	2	40	40	78%	52%	0	19	0	1	21	+/-3	4	5.18	4.6	9	0	27
<b>Totals</b>	<b>13,198</b>	<b>940</b>	<b>926</b>	<b>78.8%</b>	<b>63.1%</b>	<b>355</b>	<b>202</b>	<b>5</b>	<b>22</b>	<b>585</b>	<b>+/- 59</b>	<b>43</b>	<b>5.33</b>	<b>5.35</b>	<b>712</b>	<b>61</b>	<b>124</b>

The response rate for all units combined is: 78.8%

Satisfaction scale of 1=very dissatisfied to 7=very satisfied.

\* Number of 1st drawing applicants with that unit as 1st choice.

## Black Hills Firearm Elk 1990-2020



# PRAIRIE FIREARM ELK

A total of 251 licenses were issued for the 2020 Prairie Firearm Elk season. All license holders were sent a survey at the end of the season and 175 responded for a 70% response rate. Approximately 89% responded through the Internet.

Respondents reported hunting an average of 5.97 days for a total of 1,499 days of recreation. The projected harvest was 56 bulls and 87 cows for an overall success rate of 57%.

Hunter satisfaction was based on a numerical scale from 1 (very dissatisfied) to 7 (very satisfied) and averaged 5.02 for the season.

Approximately 13% of responding hunters reported hunting mostly on public land, 70% on private land they did not own, and 16% on private land they owned.

## Summary comparison for 2011-2020 Prairie Firearm Elk seasons

YEAR	Licenses	Harvest			Success	Avg. Days Hunted	Average Satisfaction
	Sold	Bulls	Cows	Total			
2011	128	20	15	35	27%	4.03	4.02
2012	97	26	20	46	47%	5.22	4.72
2013	96	18	13	30	32%	4.81	4.15
2014	92	33	25	59	64%	3.73	5.31
2015	98	29	25	54	55%	4.59	5.34
2016	148	32	27	60	40%	4.76	4.68
2017	149	41	34	75	50%	6.43	4.81
2018	139	59	51	109	79%	5.55	5.58
2019	140	41	50	91	65%	5.73	5.43
2020	251	56	87	143	57%	5.97	5.02

## 2020 Prairie Firearm Elk Harvest Projections

*Last Revised: 29 March 2021*

Unit/Type	Resident Licenses					Harvest Projections							Elk Shot Not Recovered	Avg Satisfctn Score	Avg Days Hunted	Land Hunted Most			
	Appl. 1st Choice *		Avail.	Sold	Resp.	Success	Bull	Cow	Total Elk		CI (95%)	Recovered				Public	Own	Private	Other
	Choice *	Avail.					Bulls	Cows	Calves	Calves									
09A-21	335	10	10	80%	63%	6	0	0	0	6	+/-2	1	5.5	9.4	0	5	5		
09A-23	42	15	15	80%	8%	0	1	0	0	1	+/-1	0	3.6	8.4	1	1	10		
11A-23	34	18	16	50%	63%	0	8	0	2	10	+/-4	0	4.3	3.4	0	0	16		
11B-21	451	16	16	56%	67%	11	0	0	0	11	+/-3	0	6.1	8.8	2	0	11		
11C-21	155	16	16	81%	92%	12	1	1	0	15	+/-1	1	6.2	4.9	1	6	9		
11D-23	60	30	30	77%	91%	0	22	1	4	27	+/-2	1	6.1	4.2	0	1	29		
11E-23	44	30	30	73%	45%	0	11	1	1	14	+/-3	4	5.3	3.6	0	0	27		
11F-23	9	30	30	50%	53%	0	14	0	2	16	+/-5	0	5.0	3.1	4	0	22		
15A-21	115	8	8	88%	29%	1	1	0	0	2	+/-1	0	4.6	12.0	0	2	6		
15A-23	7	5	5	100%	0%	0	0	0	0	0	+/-0	0	2.3	8.2	0	1	2		
27A-21	515	10	9	67%	83%	8	0	0	0	8	+/-2	0	6.5	5.5	3	5	2		
27A-23	31	10	9	67%	67%	0	6	0	0	6	+/-2	0	5.2	2.7	0	0	8		
35A-21	729	4	4	100%	100%	4	0	0	0	4	+/-0	0	6.3	5.3	2	2	0		
35A-23	31	8	7	71%	60%	0	4	0	0	4	+/-2	0	5.0	6.0	3	1	0		
35B-21	1,214	4	4	75%	100%	4	0	0	0	4	+/-0	0	6.0	14.0	1	1	1		
35B-23	68	12	12	67%	63%	0	6	2	0	8	+/-2	0	5.0	6.8	9	2	2		
WRA-21	652	10	10	60%	50%	5	0	0	0	5	+/-3	0	4.0	11.0	3	3	3		
WRA-23	40	20	20	75%	13%	0	3	0	0	3	+/-2	0	2.8	7.8	1	3	11		
<b>Totals</b>	<b>4,532</b>	<b>256</b>	<b>251</b>	<b>69.7%</b>	<b>57.0%</b>	<b>51</b>	<b>78</b>	<b>5</b>	<b>9</b>	<b>143</b>	<b>+/- 34</b>	<b>8</b>	<b>5.02</b>	<b>5.97</b>	<b>30</b>	<b>37</b>	<b>159</b>		

The response rate for all units combined is: 69.7%

Satisfaction scale of 1=very dissatisfied to 7=very satisfied.

\* Number of 1st drawing applicants with that unit as 1st choice.

# **CUSTER STATE PARK ARCHERY ELK**

A total of 3 resident licenses were issued for the 2020 Custer State Park Early Archery Elk season which was open from September 1-30. There was no Late CSP Archery season in 2020.

Respondents reported hunting an average of 13.7 days for a total of 41 days of recreation. One hunter reported harvesting an adult bull. Hunter satisfaction was based on a numerical scale from 1 (very dissatisfied) to 7 (very satisfied) and averaged 6.50 for the season.

Summary comparison of the 2011-2020 CSP Archery elk seasons

<b>Year</b>	<b>Applications</b>	<b>Licenses</b>	<b>Bull Harvest</b>	<b>Cow Harvest</b>	<b>Success</b>	<b>Avg. Days Hunted</b>	<b>Average Satisfaction</b>
2011	3,863	18	1	0	6%	7.8	NA
2012	2,077	3	0	0	0%	14.0	NA
2013	2,740	3	3	0	100%	9.3	NA
2014	3,023	4	4	0	100%	8.8	7.00
2015	3,600	4	3	0	75%	16.3	6.50
2016	3,707	3	1	0	33%	15.0	6.00
2017	3,704	3	1	0	33%	9.7	5.67
2018	3,772	3	2	0	50%	11.0	5.50
2019	4,055	3	3	0	100%	5.0	7.00
2020	4,353	3	1	0	33%	13.7	6.50

# **CUSTER STATE PARK FIREARM ANY ELK**

A total of 9 resident licenses were issued for the 2020 Custer State Park Firearm Any Elk season which was open from October 1-31.

Respondents reported hunting an average of 5.8 days for a total of 52 days of recreation. All hunters responded and 8 reported harvesting adult bulls. Hunter satisfaction was based on a numerical scale from 1 (very dissatisfied) to 7 (very satisfied) and averaged 6.89 for the season.

Summary comparison of the 2011-2020 CSP Firearm Any elk seasons

<b>Year</b>	<b>Applications</b>	<b>Licenses</b>	<b>Bull Harvest</b>	<b>Cow Harvest</b>	<b>Success</b>	<b>Avg. Days Hunted</b>	<b>Average Satisfaction</b>
2011	8,019	11	10	0	91%	5.5	NA
2012	6,582	4	4	0	100%	1.75	NA
2013	7,860	4	3	1	100%	2.0	NA
2014	8,084	4	4	0	100%	1.0	7.00
2015	9,136	8	8	0	100%	1.9	6.88
2016	8,958	9	8	0	89%	2.8	6.56
2017	8,828	9	8	0	88%	2.3	6.71
2018	8,670	9	8	0	86%	5.7	5.71
2019	8,949	9	8	0	89%	2.8	6.25
2020	9,385	9	8	0	89%	5.8	6.89

# **CUSTER STATE PARK ANTLERLESS ELK**

The Custer State Park Antlerless Elk season was closed in 2020.

Summary comparison of the 2007-2020 CSP Antlerless elk seasons

<b>Year</b>	<b>Applications</b>	<b>Licenses</b>	<b>Bull Harvest</b>	<b>Cow Harvest</b>	<b>Success</b>	<b>Avg. Days Hunted</b>	<b>Average Satisfaction</b>
2007	3,763	60	1	31	53%	3.3	NA
2008	3,646	40	2	21	55%	2.8	NA
2009	3,548	20	0	19	95%	2.5	NA
2010	3,192	5	0	4	80%	NA	NA
2011-15	Closed						
2016	3,138	20	0	18	90%	2.20	6.20
2017	3,436	29	1	24	86%	2.10	5.83
2018	3,175	23	0	4	19%	3.35	2.19
2019-20	Closed						