

FISHERIES MANAGEMENT PLAN

BLACK HILLS STREAMS, 2015 - 2019

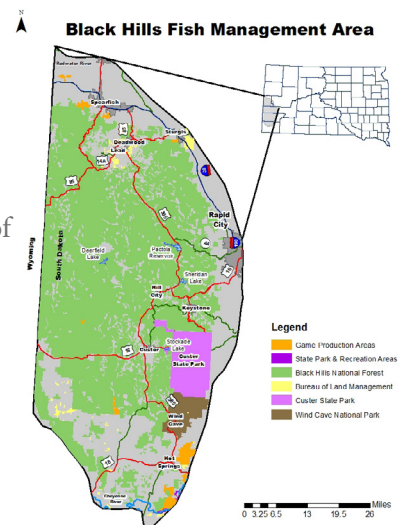


WHAT MAKES BLACK HILLS STREAM FISHERIES SPECIAL?

Coldwater streams in the Black Hills contain the only naturally reproducing trout populations in the state. Some of these streams have consistent flow while some have highly variable flows, which can impact fisheries by reducing the amount of habitat available to trout and causing water temperatures to be higher than trout can tolerate. One of the great challenges to maintaining trout populations is to manage and enhance instream habitat while reducing the impacts of siltation and runoff.

BLACK HILLS STREAM MANAGEMENT PLAN OVERVIEW:

This is a summary of a much larger document guiding fisheries management of Black Hills streams. Plans were developed through staff, commission and public input with the intent of managing stream fisheries for the enjoyment of all Black Hills streams anglers. This plan is intended to move the process toward more on the ground activities and projects. While all streams are important, the major emphasis of this plan will focus on the Rapid, Castle and Spearfish Creek watersheds.



MAJOR ISSUES IDENTIFIED FOR STREAMS:

- ▶ Instream habitat enhancement and protection efforts may be insufficient to improve trout populations.
- ▶ Insufficient instream flows and high summer water temperatures may be limiting trout populations.
- ▶ Stream flows are impacted by human activities, including urban development.
- ▶ Regulations on Rapid Creek may not be meeting angler expectations.
- ▶ Factors influencing trout reproduction, growth and recruitment in specific stream reaches are not well understood.
- ▶ Different angler types have different expectations when fishing Black Hills streams.

OBJECTIVES ADDRESSING SOME OF THESE ISSUES:

- ▶ Annually protect or enhance at least one half mile of coldwater stream habitat.
- ▶ Evaluate the effects of Rapid Creek special regulations.
- ▶ Identify factors limiting trout populations in Rapid, Castle and Spearfish Creeks.
- ▶ Rehabilitate instream habitat structures in Rapid and Spearfish Creeks.
- ▶ Work with other agencies to identify and secure stream flows in major watersheds.
- ▶ Annually submit at least one major stream habitat project proposal for the Rapid Creek and Spearfish Creek watersheds for funding.

STRATEGIES TO ACCOMPLISH THESE OBJECTIVES:

- ▶ Identify stream reaches where habitat projects could improve trout sizes and numbers.
- ▶ Based on research results and public input, recommend possible regulation changes.
- ▶ Identify instream habitat structures in need of rehabilitation.
- ▶ Identify areas where sediment removal and bank stabilization is needed.
- ▶ Submit habitat projects for funding in budgets.
- ▶ Collaborate with the Forest Service on permitting and funding of habitat improvement projects.

For more information visit gfp.sd.gov

To speak with fisheries personnel at the Outdoor Campus West contact:

4130 Adventure Trail
Rapid City, SD 57702
Phone 605-394-2391
Or Email to wildinfo@state.sd.us

Plans can be found at: gfp.sd.gov
To learn about aquatic invasive species visit SDLeastWanted.com

