

## ADDENDUM | No. 1

<b>PROJECT</b>	Campground Development – Phase II, Palisades State Park, Minnehaha County, SD, GPF Project No. Pali220a, OSE#G2121—12X/DEL		
<b>BID DATE</b>	3:00 PM	CT	5/5/2022
<b>BID LOCATION</b>	Department of Game, Fish and Park Engineering Section Foss Building, 523 East Capitol Above., Pierre, SD 57501-3182 Video Link: <a href="https://gfp.sd.gov/bids-contracts/">https://gfp.sd.gov/bids-contracts/</a>		
<b>ISSUE DATE</b>	5/3/2022		
<b>NOTICE</b>	Failure to acknowledge all addenda in the BID may cause rejection of the BID. See Instructions to Bidders.		

### SCOPE OF THIS ADDENDUM

The following becomes a part of the original project manual and drawings, taking precedence over the items that may conflict. The bidder shall note receipt and make acknowledgment of the Addendum on his/her bid form, incorporating its provision in his/her bid.

### PRIOR APPROVALS

The following manufacturers of the items and materials have been added to the list of approved manufacturers. Listing of an item does not change the requirements of the specifications. Equipment furnished shall meet the materials and performance requirements as specified.

SECTION	DESCRIPTION	MANUFACTURER
04 2000	CMU (standard and burnished)	County Material – Color: Natural



## GENERAL

### PROJECT MANUAL

The following additions, changes and clarifications have been made to the Project Manual.

**Exhibit A, Bid Form – Replace Bid Form in its entirety, below are revisions for reference.**

Bid Schedule No 1 - Civil, Bid Item 1.57 Fertilizing, Quantity 0.9 Ton

*Replace:* Quantity 0.9 Ton with 16.0 Ton

Bid Schedule No 2.A - Water Distribution System, Bid Item 2.16B Fertilizing, Quantity 0.1 Ton

*Replace:* Quantity 0.1 Ton with 1.6 Ton

Bid Schedule No 2.B – Water Transmission System, Bid Item 2.19A Fertilizing, Quantity 0.1 Ton

*Replace:* Quantity 0.1 Ton with 2.4 Ton

Bid Schedule No 3 - 256<sup>th</sup> Street Improvements, Bid Item 3.21 Fertilizing, Quantity 0.1 Ton

*Replace:* Quantity 0.1 Ton with 0.5 Ton

Bid Schedule No 3 - 256<sup>th</sup> Street Improvements, Bid Item 3.15 Flat Aluminum Sign, Nonremovable Copy High Intensity, Quantity 50 SF

*Replace:* Quantity 50 SF with 12 SF

**Exhibit A-1, Modification to Bid Form – Replace Modification to Bid Form in its entirety, below are modifications for reference.**

Bid Schedule No 1 - Civil, Bid Item 1.57 Fertilizing, Quantity 0.9 Ton

*Replace:* Quantity 0.9 Ton with 16.0 Ton

Bid Schedule No 2.A - Water Distribution System, Bid Item 2.16B Fertilizing, Quantity 0.1 Ton

*Replace:* Quantity 0.1 Ton with 1.6 Ton

Bid Schedule No 2.B – Water Transmission System, Bid Item 2.19A Fertilizing, Quantity 0.1 Ton

*Replace:* Quantity 0.1 Ton with 2.4 Ton

Bid Schedule No 3 - 256<sup>th</sup> Street Improvements, Bid Item 3.21 Fertilizing, Quantity 0.1 Ton

*Replace:* Quantity 0.1 Ton with 0.5 Ton

Bid Schedule No 3 - 256<sup>th</sup> Street Improvements, Bid Item 3.15 Flat Aluminum Sign, Nonremovable Copy High Intensity, Quantity 50 SF

*Replace:* Quantity 50 SF with 12 SF

### DRAWINGS

The following additions, changes and clarifications have been made to the Drawings.

**Drawing Sheet G-004**



Bid Schedule No 1 - Civil, Bid Item 1.57 Fertilizing, Quantity 0.9 Ton

*Replace:* Quantity 0.9 Ton with 16.0 Ton

Bid Schedule No 2.A - Water Distribution System, Bid Item 2.16B Fertilizing, Quantity 0.1 Ton

*Replace:* Quantity 0.1 Ton with 1.6 Ton

Bid Schedule No 2.B – Water Transmission System, Bid Item 2.19A Fertilizing, Quantity 0.1 Ton

*Replace:* Quantity 0.1 Ton with 2.4 Ton

Bid Schedule No 3 - 256<sup>th</sup> Street Improvements, Bid Item 3.21 Fertilizing, Quantity 0.1 Ton

*Replace:* Quantity 0.1 Ton with 0.5 Ton

Bid Schedule No 3 - 256<sup>th</sup> Street Improvements, Bid Item 3.15 Flat Aluminum Sign, Nonremovable Copy High Intensity, Quantity 50 SF

*Replace:* Quantity 50 SF with 12 SF

#### **Drawing Sheets C-000**

Certification and Testing

*Clarification:* Materials testing (soils and concrete) will be completed by the Owner. All other testing shall be complete by the contractor and is incidental to the associated bid items.

#### **Drawing Sheets C-002**

Hydroseeding/Hydraulic Straw Mulching

*Clarification:* Application Rate is 4,000lb/Acre.

#### **Drawing Sheet C-100**

*Add:* Additional geotechnical exploration sites in Dump Station Area with date 4.25.22

#### **NOTE**

The Plan Holders List and Addendums are available on our website at <http://www.bannerassociates.com> by clicking on **View Bid Information / Project Name / Project Information** link.

Project Manual and Drawing inquiries regarding the work should be directed to:

#### **CONTACT PERSONS**

Banner Associates, Inc.    Tel 1-605-692-6342 | Toll Free 1-855-323-6342 | Fax 1-605-692-5714

Lance Weatherly

Project Engineer

[lancew@bannerassociates.com](mailto:lancew@bannerassociates.com)

Dave Lorang

Project Architect

[davel@bannerassociates.com](mailto:davel@bannerassociates.com)



West Plains Engineering    Tel    605.362.3753    |    Fax 605.362.3759

Todd Weidner  
Conner

Electrical Engineer  
Mechanical Engineer

[todd.weidner@westplainsengineering.com](mailto:todd.weidner@westplainsengineering.com)  
[connor.swiontek@westplainsengineering.com](mailto:connor.swiontek@westplainsengineering.com)

## ATTACHMENTS

1. Bid Form
2. Modification to Bid Form
3. Drawing Sheet G-004
4. Drawing Sheet C-000
5. Drawing Sheet C-002
6. Drawing Sheet C-100
7. MEP Addendum



---

Lance Weatherly (P.E.) #9762

## BID FORM - ADDENDUM NO.1

**Campground Development Phase II  
Palisades State Park  
Minnehaha County, South Dakota  
GFP Project No. Pali220a  
OSE#G2121--12X/DEL**

Date: \_\_\_\_\_

**To:** SD Game, Fish & Parks Engineering Supervisor  
Joe Foss Building, 523 East Capitol, Pierre, South Dakota 57501

Phone: 605-773-6082

The undersigned, being familiar with the local conditions affecting the work, and with the Contract Documents, including the Invitation to Bid, Instructions to Bidders, Bid Form, Explanation of Alternates, Modification to Bid Form, Bid Bond Form, Performance and Payment Bond, Acknowledgment of Surety, Sample Certification of Surety, Non-Resident Bidder Affidavit, Form of Agreement for Construction, General Conditions, Special Conditions, Technical Specifications, Plans and Addenda which govern the purchase of material and labor and the awarding of contracts hereby proposes to do all the work and provide all the material and equipment which pertains to Campground Development Phase II, Palisades State Park, Minnehaha County, South Dakota, GFP Project No. Pali220a, OSE#G2121--12X/DEL.

### BID SCHEDULE 1 - CIVIL

Item No.	Spec. Ref.	Item Description	Quantity	Units	Unit Price	Extended Amount
1.01	009E0010	MOBILIZATION	1	LS	\$	\$
1.02	100E0020	CLEAR AND GRUB TREE	1	LS	\$	\$
1.03	100E0100	CLEARING	1	LS	\$	\$
1.04	110E1700	REMOVE SILT FENCE	2,748	FT	\$	\$
1.05	110E5600	SALVAGE CATTLE GUARD	2	EA	\$	\$
1.06	120E0010	UNCLASSIFIED EXCAVATION	13,083	CY	\$	\$
1.07	120E0300	BORROW UNCLASSIFIED EXCAVATION	14,700	CY	\$	\$
1.08	120E1000	MUCK EXCAVATION	75	SY	\$	\$
1.09	120E1100	UNCLASSIFIED/ROCK EXCAVATION	100	CY	\$	\$
1.10	120E3000	PLACING EMBANKMENT	13,083	CY	\$	\$
1.11	210E3020	ORDINARY ROADWAY SHAPING	17,089	SY	\$	\$
1.12	SPECIAL	TOPSOIL STRIPPING	10,781	CY	\$	\$
1.13	230E0010	PLACING TOPSOIL	10,284	CY	\$	\$
1.14	SPECIAL	EXCESS TOPSOIL ON-SITE STOCKPILE	500	CY	\$	\$

1.15	260E1010	BASE COURSE	8,390	TON	\$	\$
1.16	450E4520	48" ARCH CORRUGATED METAL PIPE FLARED ENDS, FURNISH	4	EA	\$	\$
1.17	450E4521	48" ARCH CORRUGATED METAL PIPE FLARED ENDS, INSTALL	4	EA	\$	\$
1.18	450E4749	15" CORRUGATED METAL PIPE 16 GAUGE, FURNISH	109	FT	\$	\$
1.19	450E4750	15" CORRUGATED METAL PIPE, INSTALL	109	FT	\$	\$
1.20	450E4759	18" CORRUGATED METAL PIPE 16 GAUGE, FURNISH	317	FT	\$	\$
1.21	450E4760	18" CORRUGATED METAL PIPE, INSTALL	317	FT	\$	\$
1.22	450E4769	24" CORRUGATED METAL PIPE 16 GAUGE, FURNISH	48	FT	\$	\$
1.23	450E4770	24" CORRUGATED METAL PIPE, INSTALL	48	FT	\$	\$
1.24	450E5010	18" CMP ELBOW 90 DEG, FURNISH	2	EA	\$	\$
1.25	450E5011	18" CMP ELBOW 90 DEG, INSTALL	2	EA	\$	\$
1.26	450E5211	18" CORRUGATED METAL PIPE SLOPED ENDS, FURNISH	8	EA	\$	\$
1.27	450E5212	18" CORRUGATED METAL PIPE SLOPED ENDS, INSTALL	8	EA	\$	\$
1.28	450E5215	24" CORRUGATED METAL PIPE SLOPED ENDS, FURNISH	2	EA	\$	\$
1.29	450E5216	24" CORRUGATED METAL PIPE SLOPED ENDS, INSTALL	2	EA	\$	\$
1.30	450E5402	15" CORRUGATED METAL PIPE SAFETY END, FURNISH	2	EA	\$	\$
1.31	450E5403	15" CORRUGATED METAL PIPE SAFETY END, INSTALL	2	EA	\$	\$
1.32	450E5559	48" ARCH CORRUGATED METAL PIPE 12 GAUGE, FURNISH	150	FT	\$	\$
1.33	450E5560	48" ARCH CORRUGATED METAL PIPE, INSTALL	150	FT	\$	\$
1.34	451E1004	4" PVC SEWER PIPE	1,715	FT	\$	\$
1.35	451E3004	4" PIPE BEND (45 DEG.)	2	EA	\$	\$
1.36	451E3004	4" PIPE BEND (90 DEG.)	32	EA	\$	\$
1.37	451E4943	4" SEWER PIPE BEDDING MATERIAL	32	FT	\$	\$
1.38	464E0100	CONTROLLED DENSITY FILL	31	CY	\$	\$
1.39	632E1325	2.0"X2.0" PERFORATED TUBE POST	32	FT	\$	\$
1.40	632E1550	MISCELLANEOUS POST HARDWARE	1	LS	\$	\$
1.41	632E3203	FLAT ALUMINUM SIGN, NONREMOVABLE COPY HIGH INTENSITY	22	SF	\$	\$
1.42	634E0110	TRAFFIC CONTROL SIGNS	52	SF	\$	\$

1.43	634E0120	TRAFFIC CONTROL, MISCELLANEOUS	1	LS	\$	\$
1.44	634E0275	TYPE 3 BARRICADE	6	EA	\$	\$
1.45	650E0059	TYPE B66 CONCRETE CURB AND GUTTER	124	FT	\$	\$
1.46	651E0140	4" REINFORCED CONCRETE SIDEWALK	2,748	SF	\$	\$
1.47	SPECIAL	5.5" REINFORCED CONCRETE SIDEWALK	2,452	SF	\$	\$
1.48	651E7000	TYPE 1 DETECTABLE WARNINGS	40	SQFT	\$	\$
1.49	670E5205	SPECIAL GRATE - 18IN BEEHIVE GRATE	2	EA	\$	\$
1.50	671E1048	48" MANHOLE	3	EA	\$	\$
1.51	671E2004	4" MANHOLE BOOT	4	EA	\$	\$
1.52	671E4048	48" MANHOLE RISER SECTION	3	EA	\$	\$
1.53	671E6035	SPECIAL MANHOLE FRAME AND LID (NEENAH R1712)	3	EA	\$	\$
1.54	700E0210	CLASS B RIPRAP	226	TON	\$	\$
1.55	730E0204	TYPE C PERMANENT SEED MIXTURE	248	LB	\$	\$
1.56	730E1200	HYDROSEEDING/HYDRAULIC STRAW MULCH - CAMPGROUND SEED MIXTURE	68,382	SY	\$	\$
1.57	731E0200	FERTILIZING	16.0	TON	\$	\$
1.58	732E0100	MULCHING	46	TON	\$	\$
1.59	734E0102	TYPE 2 EROSION CONTROL BLANKET	2,635	SY	\$	\$
1.60	734E0152	6" DIAMETER EROSION CONTROL WATTLE	4,000	FT	\$	\$
1.61	734E0604	HIGH FLOW SILT FENCE	2,440	FT	\$	\$
1.62	734E0610	MUCKING SILT FENCE	361	CY	\$	\$
1.63	734E0620	REPAIR SILT FENCE	122	FT	\$	\$
1.64	831E0110	TYPE B DRAINAGE FABRIC	112	SY	\$	\$
1.65	831E0300	REINFORCEMENT FABRIC (MSE)	24	SY	\$	\$
1.66	900E1310	CONCRETE WASHOUT AREA	1	EA	\$	\$
1.67	900E1320	CONSTRUCTION ENTRANCE	1	EA	\$	\$
1.68	900E5145	BOLLARD	6	EA	\$	\$
1.69	SPECIAL	CIP REINF. CLASS M6 CONC ISLANDS	3	EA	\$	\$
1.70	SPECIAL	TRAILER DUMP STATION BASIN DRAIN	4	EA	\$	\$

1.71	SPECIAL	TRAILER DUMP STATION W/ TOWER	6	EA	\$	\$
1.72	SPECIAL	UTILITY MARKER - SEWER	3	EA	\$	\$
1.73	SPECIAL	2500 GAL PRECAST CONCRETE SEPTIC TANK	6	EA	\$	\$
1.74	SPECIAL	2000 GAL PRECAST CONCRETE SEPTIC TANK	1	EA	\$	\$
1.75	SPECIAL	LOCKABLE ACCESS DOOR F/I	3	EA	\$	\$
1.76	SPECIAL	2-LATERAL DISTRIBUTION BOX	3	EA	\$	\$
1.77	SPECIAL	8-LATERAL DISTRIBUTION BOX	4	EA	\$	\$
1.78	SPECIAL	2 WAY CLEANOUT	2	EA	\$	\$
1.79	SPECIAL	HIGH CAPACITY INFILTRATOR LATERALS	2,600	FT	\$	\$
1.80	SPECIAL	GRANULAR BEDDING MATERIAL FOR ABSORPTION TRENCHES	650	TON	\$	\$
SUB TOTAL BID SCHEDULE 1 - CIVIL						\$

**BID SCHEDULE NO. 2A - WATER DISTRIBUTION SYSTEM**

Item No.	Spec. Ref.	Item Description	Quantity	Units	Unit Price	Extended Amount
2.01A	009E0010	MOBILIZATION	1	LS	\$	\$
2.02A	451E6105	CONNECT TO EXISTING WATERMAIN	2	EA	\$	\$
2.03A	451E0401	1" HIGH DENSITY POLYETHYLENE PIPE	461	FT	\$	\$
2.04A	451E2403	4"X3" PIPE REDUCER	1	EA	\$	\$
2.05A	451E2802	1" CORPORATION STOP WITH TAPPING SADDLE	5	EA	\$	\$
2.06A	451E2806	1.5" CORPORATION STOP WITH TAPPING SADDLE	2	EA	\$	\$
2.07A	451E2902	1" CURB STOP WITH BOX	10	EA	\$	\$
2.08A	451E3103	3" PIPE CAP	1	EA	\$	\$
2.09A	451E4203	3" VALVE	2	EA	\$	\$
2.10A	451E4350	VALVE BOX	13	EA	\$	\$
2.11A	451E4380	TRACER WIRE ACCESS BOX, TYPE 1	7	EA	\$	\$
2.12A	451E4582	YARD HYDRANT	1	EA	\$	\$
2.13A	451E4905	TRENCH STABILIZATION MATERIAL	29	TON	\$	\$
2.14A	451E4926	WATER MAIN BEDDING MATERIAL	6,766	FT	\$	\$



2.15A	451E7520	EXPLORATORY EXCAVATION	5	HR	\$	\$
2.16A	634E0110	TRAFFIC CONTROL SIGNS	32	SF	\$	\$
2.17A	730E0204	TYPE C PERMANENT SEED MIXTURE	174	LB	\$	\$
2.18A	730E1200	HYDROSEEDING/HYDRAULIC STRAW MULCH - CAMPGROUND SEED MIXTURE	100	SY	\$	\$
2.19A	731E0200	FERTILIZING	1.6	TON	\$	\$
2.20A	732E0100	MULCHING	12	TON	\$	\$
2.21A	734E0604	HIGH FLOW SILT FENCE	100	FT	\$	\$
2.22A	734E0610	MUCKING SILT FENCE	15	CY	\$	\$
2.23A	734E0620	REPAIR SILT FENCE	10	FT	\$	\$
2.24A	SPECIAL	1.5" CL 200 PVC WATERMAIN	4,654	FT	\$	\$
2.25A	SPECIAL	3" CL 200 PVC WATERMAIN	1,650	FT	\$	\$
2.26A	SPECIAL	3" TO 1.5" REDUCER	1	EA	\$	\$
2.27A	SPECIAL	1" CAP	4	EA	\$	\$
2.28A	SPECIAL	1.5" CAP	5	EA	\$	\$
2.29A	SPECIAL	1.5" SLEEVE	2	EA	\$	\$
2.30A	SPECIAL	1.5" 45 DEGREE BEND	2	EA	\$	\$
2.31A	SPECIAL	3" 45 DEGREE BEND	3	EA	\$	\$
2.32A	SPECIAL	1.5" TEE	2	EA	\$	\$
2.33A	SPECIAL	3"X1.5" REDUCER	1	EA	\$	\$
2.34A	SPECIAL	1.5" VALVE	11	EA	\$	\$
2.35A	SPECIAL	3" WATER MAIN RESTRAINING DEVICE	1	EA	\$	\$
2.36A	SPECIAL	UTILITY MARKER - WATER	23	EA	\$	\$
<b>SUB TOTAL BID SCHEDULE NO. 2A - WATER DISTRIBUTION SYSTEM</b>						<b>\$</b>

**BID SCHEDULE NO. 2B – WATER TRANSMISSION SYSTEM**

Item No.	Spec. Ref.	Item Description	Quantity	Units	Unit Price	Extended Amount
2.01B	009E0010	MOBILIZATION	1	LS	\$	\$
2.02B	451E0604	4" CL 200 PVC WATER MAIN	4,798	FT	\$	\$
2.03B	451E2204	3" TEE	1	EA	\$	\$

2.04B	451E2205	4"x4" PIPE TEE	1	EA	\$	\$
2.05B	451E2403	4"X3" PIPE REDUCER	1	EA	\$	\$
2.06B	451E2802	1" CORPORATION STOP WITH TAPPING SADDLE	5	EA	\$	\$
2.07B	451E2806	1.5" CORPORATION STOP WITH TAPPING SADDLE	3	EA	\$	\$
2.08B	451E4203	3" VALVE	3	EA	\$	\$
2.09B	451E4204	4" VALVE	3	EA	\$	\$
2.10B	451E4350	VALVE BOX	6	EA	\$	\$
2.11B	451E4380	TRACER WIRE ACCESS BOX, TYPE 1	5	EA	\$	\$
2.12B	451E4926	WATER MAIN BEDDING MATERIAL	8,389	FT	\$	\$
2.13B	451E6105	CONNECT 3" WATER MAIN TO METER PIT	1	LS	\$	\$
2.14B	730E0204	TYPE C PERMANENT SEED MIXTURE	274	LB	\$	\$
2.15B	730E1200	HYDROSEEDING/HYDRAULIC STRAW MULCH - CAMPGROUND SEED MIXTURE	100	SY	\$	\$
2.16B	731E0200	FERTILIZING	2.4	TON	\$	\$
2.17B	732E0100	MULCHING	20	TON	\$	\$
2.18B	734E0604	HIGH FLOW SILT FENCE	150	FT	\$	\$
2.19B	734E0610	MUCKING SILT FENCE	20	CY	\$	\$
2.20B	734E0620	REPAIR SILT FENCE	20	FT	\$	\$
2.21B	SPECIAL	CONNECT 4" WATER MAIN TO METER PIT	1	LS	\$	\$
2.22B	SPECIAL	3" CL 200 PVC WATERMAIN	3,591	FT	\$	\$
2.23B	SPECIAL	3" CL 250 YELOMINE WATER MAIN - BORE	60	FT	\$	\$
2.24B	SPECIAL	3" 45 DEGREE BEND	4	EA	\$	\$
2.25B	SPECIAL	4" 45 DEGREE BEND	3	EA	\$	\$
2.26B	SPECIAL	UTILITY MARKER - WATER	20	EA	\$	\$
<b>SUB TOTAL BID SCHEDULE NO. 2B – WATER TRANSMISSION SYSTEM</b>						<b>\$</b>

**BID SCHEDULE NO. 3 - 256<sup>TH</sup> STREET IMPROVEMENTS**

Item No.	Spec. Ref.	Item Description	Quantity	Units	Unit Price	Extended Amount
3.01	009E0010	MOBILIZATION	1	LS	\$	\$
3.02	110E7150	REMOVE SIGN FOR RESET	1	EA	\$	\$

3.03	120E0010	UNCLASSIFIED EXCAVATION	15	CY	\$	\$
3.04	120E0300	BORROW UNCLASSIFIED EXCAVATION	2,160	CY	\$	\$
3.05	120E3000	PLACING EMBANKMENT	15	CY	\$	\$
3.06	210E3020	ORDINARY SHAPING	3,332	SY	\$	\$
3.07	SPECIAL	TOPSOIL STRIPPING	606	CY	\$	\$
3.08	230E0010	PLACING TOPSOIL	242	CY	\$	\$
3.09	260E1010	BASE COURSE	1,744	TON	\$	\$
3.10	450E4769	30" CORRUGATED METAL PIPE 16 GAUGE, FURNISH	6	FT	\$	\$
3.11	450E4770	30" CORRUGATED METAL PIPE, INSTALL	6	FT	\$	\$
3.12	450E5215	30" CORRUGATED METAL PIPE SLOPED ENDS, FURNISH	2	EA	\$	\$
3.13	450E5216	30" CORRUGATED METAL PIPE SLOPED ENDS, INSTALL	2	EA	\$	\$
3.14	632E1340	PERFORATED TUBE POST - TOWNSHIP ROAD	150	FT	\$	\$
3.15	632E3203	FLAT ALUMINUM SIGN, NONREMOVABLE COPY HIGH INTENSITY	12	SF	\$	\$
3.16	632E3500	RESET SIGN	1	EA	\$	\$
3.17	634E0110	TRAFFIC CONTROL SIGNS	68	SF	\$	\$
3.18	634E0120	TRAFFIC CONTROL MISCELLANEOUS	1	LS	\$	\$
3.19	634E0275	TYPE 3 BARRICADE	6	EA	\$	\$
3.20	730E0204	TYPE C PERMANENT SEED MIXTURE	60	LB	\$	\$
3.21	731E0200	FERTILIZING	0.5	TON	\$	\$
3.22	732E0100	MULCHING	4	TON	\$	\$
3.23	734E0604	HIGH FLOW SILT FENCE	124	FT	\$	\$
3.24	734E0610	MUCKING SILT FENCE	15	CY	\$	\$
3.25	734E0620	REPAIR SILT FENCE	10	FT	\$	\$
3.26	734E5010	SWEEPING	10	HR	\$	\$
<b>SUB TOTAL BID SCHEDULE NO. 3 - 256TH STREET IMPROVEMENTS</b>						<b>\$</b>

**BID SCHEDULE NO. 4 - WELCOME CENTER**

Item No.	Item Description	Quantity	Units	Unit Price	Extended Amount
4.01	WELCOME CENTER BUILDING	1	LS	\$	\$
SUB TOTAL BID SCHEDULE NO. 4 - WELCOME CENTER					\$

**BID SCHEDULE NO. 5 – COMFORT STATION**

Item No.	Item Description	Quantity	Units	Unit Price	Extended Amount
5.01	COMFORT STATION	1	LS	\$	\$
SUB TOTAL BID SCHEDULE NO. 5 – COMFORT STATION					\$

**BID SCHEDULE NO. 6 – SITE ELECTRICAL/NETWORK**

Item No.	Item Description	Quantity	Units	Unit Price	Extended Amount
6.01	SITE ELECTRICAL	1	LS	\$	\$
SUB TOTAL BID SCHEDULE NO. 6 – SITE ELECTRICAL/NETWORK					\$

**For this project bids are deemed complete only if all bid schedules are bid. One contract will be awarded for all bid schedules.**

**TOTAL BASE BID ALL SCHEDULES**

TOTAL BASE BID ALL SCHEDULES					\$
------------------------------	--	--	--	--	----

The above unit prices shall include all labor, materials, bailing, shoring removal, overhead, profit, insurance, etc., to cover the finished work of the several kinds called for. Changes shall be processed in accordance with Article 14 of the General Conditions.

The Owner also reserves the unrestricted privilege to reject any unit prices for additions to or deductions from the scheduled amount of work as given in the Bid, if the same are considered excessive or unreasonable, or to accept by including the same in the contract as unit prices applicable in the event of addition to or deduction from the work to be performed under the contract, any or all such unit prices which may be considered fair or reasonable.

The above bid includes all applicable State and Municipal Sales and Use Taxes on materials, and State and Municipal Excise Taxes and all other State and Federal Taxes that would affect the amount of the bid. (See Instructions to Bidders-SD Sales and Use Tax Information for Public Contracts.)

In addition, any material furnished by the State for use in this project is subject to Use Tax and Excise Tax. The total taxable value of materials furnished by the State for this project is **\$0.00**.

*A Performance and Payment Bond as required by General Conditions will not be required on contracts which do not exceed One Hundred Thousand Dollars (\$100,000). (See SDCL 5-21-1.1 as amended).*

*If discrepancies remain at the time of substantial completion, a value will be assigned to each of the discrepancies and two (2) times their estimated value will be retained from payment to the contractor until completed and accepted. (See SDCL 5-18-13 as amended).*

**Within ten (10) days after Contractor's receipt of the Agreement for Construction, the Contractor shall submit to the Game, Fish and Parks Engineering Section, the executed Agreement for Construction, Performance and Payment Bond, Certificates of Insurance and Affirmative Action Plan (if applicable).**

#### **COMPLETION DATES**

**Work shall be commenced within ten (10) consecutive calendar days after written Notice to Proceed by the SD Game, Fish and Parks and shall be substantially completed as follows:**

**Bid Schedule No. 4, Welcome Center shall be complete by April 1, 2023.**

**All seeding shall be complete by April 26, 2023.**

**All work shall be complete by May 5, 2023.**

#### **LIQUIDATED DAMAGES**

**Should the Contractor fail to substantially complete the work within the time set forth herein, or within such extra time as may have been allowed by increases in the contract, or by formally approved extensions granted by the Owner, the Contractor and the Contractor's surety shall be liable for and shall pay the Owner per calendar day as liquidated damages for each calendar day of delay until the work is substantially complete as follows:**

**Liquidated Damages for Bid Schedule No. 4, Welcome Center work not Complete by April 1, 2023 shall be \$450.00 per calendar day.**

**Liquidated damages for seeding not completed by April 26, 2023 be \$450.00 per calendar day.**

**Liquidated damages for all other aspects of the work excluding the Welcome Center and seeding not completed by May 5, 2023 shall be \$1,050.00 per calendar day.**

The undersigned acknowledges receipt of the following addenda to the drawings and/or specifications (give number and date of each):

Addenda Nos. \_\_\_\_\_ dated \_\_\_\_\_ respectively.

The undersigned acknowledges that they have read and understand the Asbestos-Containing Materials Statement contained in the project manual.

Accompanying this proposal is a certified check, cashier's check or draft in the amount of 5% of the base bid and all add alternates, and drawn on a State or National Bank in the amount of \$ \_\_\_\_\_ or a 10% bid bond issued by a surety authorized to do business in the State of South Dakota, in the amount of \$ \_\_\_\_\_. (Not applicable if Bid is under \$100,000.)

In submitting this bid, it is understood that the right is reserved by the Owner to reject any and all bids and to waive any irregularities. It is further understood by the Bidder that he may not withdraw his Bid within 30 days after the actual opening thereof.

In submitting this bid, bidder asserts it has reviewed all provisions of the General Conditions including the provision for assessment of liquidated delay damages found in Article 10 of the General Conditions. Bidder agrees that the damages anticipated by the Owner in the event of delay in completion of the project are uncertain in amount and difficult to prove; the amount stipulated in Article III of the Agreement for Construction is a reasonable amount in light of the anticipated loss and injury; and the Owner's actual damages in the event of delay would be impracticable or extremely difficult to fix. Bidder agrees to be bound by the liquidated damages set forth in Article III of the Agreement for Construction. Bidder further agrees that the liquidated amount stipulated in Article III of the Agreement for Construction is not a penalty.

BIDDER: _____ (Type Name of Firm)
BY: _____ (Signature of Firm's Representative)
_____ (Type Name and Title of Firm's Representative)
TELEPHONE NO. _____
FACSIMILE NO. _____
E-MAIL ADDRESS _____
BUSINESS ADDRESS _____
MAILING ADDRESS (if different) _____
STATE OF INCORPORATION _____

## MODIFICATION TO BID FORM - ADDENDUM NO.1

**Campground Development Phase II  
Palisades State Park  
Minnehaha County, South Dakota  
GFP Project No. Pali220a  
OSE#G2121--12X/DEL**

Date: \_\_\_\_\_

**To:** SD Game Fish & Parks Engineering Supervisor  
Joe Foss Building, 523 East Capitol, Pierre, South Dakota 57501  
Phone: 605-773-6082; Email Modifications: GFPBidMod@state.sd.us

Please make the following modifications to our bid on the referenced project. This modification is per the Instructions to Bidders Item #3 included in the original bid documents and modifies our sealed bid.

**Note To Bidder:** For unit price and base bid modifications, place an "X" in the appropriate Add/Deduct Box. No amount on this form should reveal your actual bid amount independent of your sealed bid.

### BID SCHEDULE 1 - CIVIL

Item No.	Spec. Ref.	Item Description	Quantity	Units	Add "X"	Ded. "X"	Unit Price Modification	Extended Amount
1.01	009E0010	MOBILIZATION	1	LS			\$	\$
1.02	100E0020	CLEAR AND GRUB TREE	1	LS			\$	\$
1.03	100E0100	CLEARING	1	LS			\$	\$
1.04	110E1700	REMOVE SILT FENCE	2,748	FT			\$	\$
1.05	110E5600	SALVAGE CATTLE GUARD	2	EA			\$	\$
1.06	120E0010	UNCLASSIFIED EXCAVATION	13,083	CY			\$	\$
1.07	120E0300	BORROW UNCLASSIFIED EXCAVATION	14,700	CY			\$	\$
1.08	120E1000	MUCK EXCAVATION	75	SY			\$	\$
1.09	120E1100	UNCLASSIFIED/ROCK EXCAVATION	100	CY			\$	\$
1.10	120E3000	PLACING EMBANKMENT	13,083	CY			\$	\$
1.11	210E3020	ORDINARY ROADWAY SHAPING	17,089	SY			\$	\$
1.12	SPECIAL	TOPSOIL STRIPPING	10,781	CY			\$	\$
1.13	230E0010	PLACING TOPSOIL	10,284	CY			\$	\$
1.14	SPECIAL	EXCESS TOPSOIL ON-SITE STOCKPILE	500	CY			\$	\$
1.15	260E1010	BASE COURSE	8,390	TON			\$	\$

1.16	450E4520	48" ARCH CORRUGATED METAL PIPE FLARED ENDS, FURNISH	4	EA			\$	\$
1.17	450E4521	48" ARCH CORRUGATED METAL PIPE FLARED ENDS, INSTALL	4	EA			\$	\$
1.18	450E4749	15" CORRUGATED METAL PIPE 16 GAUGE, FURNISH	109	FT			\$	\$
1.19	450E4750	15" CORRUGATED METAL PIPE, INSTALL	109	FT			\$	\$
1.20	450E4759	18" CORRUGATED METAL PIPE 16 GAUGE, FURNISH	317	FT			\$	\$
1.21	450E4760	18" CORRUGATED METAL PIPE, INSTALL	317	FT			\$	\$
1.22	450E4769	24" CORRUGATED METAL PIPE 16 GAUGE, FURNISH	48	FT			\$	\$
1.23	450E4770	24" CORRUGATED METAL PIPE, INSTALL	48	FT			\$	\$
1.24	450E5010	18" CMP ELBOW 90 DEG, FURNISH	2	EA			\$	\$
1.25	450E5011	18" CMP ELBOW 90 DEG, INSTALL	2	EA			\$	\$
1.26	450E5211	18" CORRUGATED METAL PIPE SLOPED ENDS, FURNISH	8	EA			\$	\$
1.27	450E5212	18" CORRUGATED METAL PIPE SLOPED ENDS, INSTALL	8	EA			\$	\$
1.28	450E5215	24" CORRUGATED METAL PIPE SLOPED ENDS, FURNISH	2	EA			\$	\$
1.29	450E5216	24" CORRUGATED METAL PIPE SLOPED ENDS, INSTALL	2	EA			\$	\$
1.30	450E5402	15" CORRUGATED METAL PIPE SAFETY END, FURNISH	2	EA			\$	\$
1.31	450E5403	15" CORRUGATED METAL PIPE SAFETY END, INSTALL	2	EA			\$	\$
1.32	450E5559	48" ARCH CORRUGATED METAL PIPE 12 GAUGE, FURNISH	150	FT			\$	\$
1.33	450E5560	48" ARCH CORRUGATED METAL PIPE, INSTALL	150	FT			\$	\$
1.34	451E1004	4" PVC SEWER PIPE	1,715	FT			\$	\$
1.35	451E3004	4" PIPE BEND (45 DEG.)	2	EA			\$	\$
1.36	451E3004	4" PIPE BEND (90 DEG.)	32	EA			\$	\$
1.37	451E4943	4" SEWER PIPE BEDDING MATERIAL	32	FT			\$	\$
1.38	464E0100	CONTROLLED DENSITY FILL	31	CY			\$	\$
1.39	632E1325	2.0"X2.0" PERFORATED TUBE POST	32	FT			\$	\$
1.40	632E1550	MISCELLANEOUS POST HARDWARE	1	LS			\$	\$
1.41	632E3203	FLAT ALUMINUM SIGN, NONREMOVABLE COPY HIGH INTENSITY	22	SF			\$	\$
1.42	634E0110	TRAFFIC CONTROL SIGNS	52	SF			\$	\$
1.43	634E0120	TRAFFIC CONTROL, MISCELLANEOUS	1	LS			\$	\$
1.44	634E0275	TYPE 3 BARRICADE	6	EA			\$	\$
1.45	650E0059	TYPE B66 CONCRETE CURB AND GUTTER	124	FT			\$	\$



1.46	651E0140	4" REINFORCED CONCRETE SIDEWALK	2,748	SF			\$	\$
1.47	SPECIAL	5.5" REINFORCED CONCRETE SIDEWALK	2,452	SF			\$	\$
1.48	651E7000	TYPE 1 DETECTABLE WARNINGS	40	SQFT			\$	\$
1.49	670E5205	SPECIAL GRATE - 18IN BEEHIVE GRATE	2	EA			\$	\$
1.50	671E1048	48" MANHOLE	3	EA			\$	\$
1.51	671E2004	4" MANHOLE BOOT	4	EA			\$	\$
1.52	671E4048	48" MANHOLE RISER SECTION	3	EA			\$	\$
1.53	671E6035	SPECIAL MANHOLE FRAME AND LID (NEENAH R1712)	3	EA			\$	\$
1.54	700E0210	CLASS B RIPRAP	226	TON			\$	\$
1.55	730E0204	TYPE C PERMANENT SEED MIXTURE	248	LB			\$	\$
1.56	730E1200	HYDROSEEDING/HYDRAULIC STRAW MULCH - CAMPGROUND SEED MIXTURE	68,382	SY			\$	\$
1.57	731E0200	FERTILIZING	16.0	TON			\$	\$
1.58	732E0100	MULCHING	46	TON			\$	\$
1.59	734E0102	TYPE 2 EROSION CONTROL BLANKET	2,635	SY			\$	\$
1.60	734E0152	6" DIAMETER EROSION CONTROL WATTLE	4,000	FT			\$	\$
1.61	734E0604	HIGH FLOW SILT FENCE	2,440	FT			\$	\$
1.62	734E0610	MUCKING SILT FENCE	361	CY			\$	\$
1.63	734E0620	REPAIR SILT FENCE	122	FT			\$	\$
1.64	831E0110	TYPE B DRAINAGE FABRIC	112	SY			\$	\$
1.65	831E0300	REINFORCEMENT FABRIC (MSE)	24	SY			\$	\$
1.66	900E1310	CONCRETE WASHOUT AREA	1	EA			\$	\$
1.67	900E1320	CONSTRUCTION ENTRANCE	1	EA			\$	\$
1.68	900E5145	BOLLARD	6	EA			\$	\$
1.69	SPECIAL	CIP REINF. CLASS M6 CONC ISLANDS	3	EA			\$	\$
1.70	SPECIAL	TRAILER DUMP STATION BASIN DRAIN	4	EA			\$	\$
1.71	SPECIAL	TRAILER DUMP STATION W/ TOWER	6	EA			\$	\$
1.72	SPECIAL	UTILITY MARKER - SEWER	3	EA			\$	\$
1.73	SPECIAL	2500 GAL PRECAST CONCRETE SEPTIC TANK	6	EA			\$	\$
1.74	SPECIAL	2000 GAL PRECAST CONCRETE SEPTIC TANK	1	EA			\$	\$
1.75	SPECIAL	LOCKABLE ACCESS DOOR F/I	3	EA			\$	\$

1.76	SPECIAL	2-LATERAL DISTRIBUTION BOX	3	EA			\$	\$
1.77	SPECIAL	8-LATERAL DISTRIBUTION BOX	4	EA			\$	\$
1.78	SPECIAL	2 WAY CLEANOUT	2	EA			\$	\$
1.79	SPECIAL	HIGH CAPACITY INFILTRATOR LATERALS	2,600	FT			\$	\$
1.80	SPECIAL	GRANULAR BEDDING MATERIAL FOR ABSORPTION TRENCHES	650	TON			\$	\$
<div>(CIRCLE ONE)</div> <div>BID SCHEDULE 1 – CIVIL MODIFICATION TOTAL - ADD OR DEDUCT</div>								\$

**BID SCHEDULE NO. 2A - WATER DISTRIBUTION SYSTEM**

Item No.	Spec. Ref.	Item Description	Quantity	Units	Add "X"	Ded. "X"	Unit Price Modification	Extended Amount
2.01A	009E0010	MOBILIZATION	1	LS			\$	\$
2.02A	451E6105	CONNECT TO EXISTING WATERMAIN	2	EA			\$	\$
2.03A	451E0401	1" HIGH DENSITY POLYETHYLENE PIPE	461	FT			\$	\$
2.04A	451E2403	4"X3" PIPE REDUCER	1	EA			\$	\$
2.05A	451E2802	1" CORPORATION STOP WITH TAPPING SADDLE	5	EA			\$	\$
2.06A	451E2806	1.5" CORPORATION STOP WITH TAPPING SADDLE	2	EA			\$	\$
2.07A	451E2902	1" CURB STOP WITH BOX	10	EA			\$	\$
2.08A	451E3103	3" PIPE CAP	1	EA			\$	\$
2.09A	451E4203	3" VALVE	2	EA			\$	\$
2.10A	451E4350	VALVE BOX	13	EA			\$	\$
2.11A	451E4380	TRACER WIRE ACCESS BOX, TYPE 1	7	EA			\$	\$
2.12A	451E4582	YARD HYDRANT	1	EA			\$	\$
2.13A	451E4905	TRENCH STABILIZATION MATERIAL	29	TON			\$	\$
2.14A	451E4926	WATER MAIN BEDDING MATERIAL	6,766	FT			\$	\$
2.15A	451E7520	EXPLORATORY EXCAVATION	5	HR			\$	\$
2.16A	634E0110	TRAFFIC CONTROL SIGNS	32	SF			\$	\$
2.17A	730E0204	TYPE C PERMANENT SEED MIXTURE	174	LB			\$	\$
2.18A	730E1200	HYDROSEEDING/HYDRAULIC STRAW MULCH - CAMPGROUND SEED MIXTURE	100	SY			\$	\$
2.19A	731E0200	FERTILIZING	1.6	TON			\$	\$
2.20A	732E0100	MULCHING	12	TON			\$	\$

2.21A	734E0604	HIGH FLOW SILT FENCE	100	FT			\$	\$
2.22A	734E0610	MUCKING SILT FENCE	15	CY			\$	\$
2.23A	734E0620	REPAIR SILT FENCE	10	FT			\$	\$
2.24A	SPECIAL	1.5" CL 200 PVC WATERMAIN	4,654	FT			\$	\$
2.25A	SPECIAL	3" CL 200 PVC WATERMAIN	1,650	FT			\$	\$
2.26A	SPECIAL	3" TO 1.5" REDUCER	1	EA			\$	\$
2.27A	SPECIAL	1" CAP	4	EA			\$	\$
2.28A	SPECIAL	1.5" CAP	5	EA			\$	\$
2.29A	SPECIAL	1.5" SLEEVE	2	EA			\$	\$
2.30A	SPECIAL	1.5" 45 DEGREE BEND	2	EA			\$	\$
2.31A	SPECIAL	3" 45 DEGREE BEND	3	EA			\$	\$
2.32A	SPECIAL	1.5" TEE	2	EA			\$	\$
2.33A	SPECIAL	3"X1.5" REDUCER	1	EA			\$	\$
2.34A	SPECIAL	1.5" VALVE	11	EA			\$	\$
2.35A	SPECIAL	3" WATER MAIN RESTRAINING DEVICE	1	EA			\$	\$
2.36A	SPECIAL	UTILITY MARKER - WATER	23	EA			\$	\$
(CIRCLE ONE)								\$
BID SCHEDULE NO. 2A - WATER DISTRIBUTION SYSTEM MODIFICATION TOTAL - ADD OR DEDUCT								

**BID SCHEDULE NO. 2B – WATER TRANSMISSION SYSTEM**

Item No.	Spec. Ref.	Item Description	Quantity	Units	Add "X"	Ded. "X"	Unit Price Modification	Extended Amount
2.01B	009E0010	MOBILIZATION	1	LS			\$	\$
2.02B	451E0604	4" CL 200 PVC WATER MAIN	4,798	FT			\$	\$
2.03B	451E2204	3" TEE	1	EA			\$	\$
2.04B	451E2205	4"x4" PIPE TEE	1	EA			\$	\$
2.05B	451E2403	4"X3" PIPE REDUCER	1	EA			\$	\$
2.06B	451E2802	1" CORPORATION STOP WITH TAPPING SADDLE	5	EA			\$	\$
2.07B	451E2806	1.5" CORPORATION STOP WITH TAPPING SADDLE	3	EA			\$	\$
2.08B	451E4203	3" VALVE	3	EA			\$	\$
2.09B	451E4204	4" VALVE	3	EA			\$	\$

2.10B	451E4350	VALVE BOX	6	EA			\$	\$
2.11B	451E4380	TRACER WIRE ACCESS BOX, TYPE 1	5	EA			\$	\$
2.12B	451E4926	WATER MAIN BEDDING MATERIAL	8,389	FT			\$	\$
2.13B	451E6105	CONNECT 3" WATER MAIN TO METER PIT	1	LS			\$	\$
2.14B	730E0204	TYPE C PERMANENT SEED MIXTURE	274	LB			\$	\$
2.15B	730E1200	HYDROSEEDING/HYDRAULIC STRAW MULCH - CAMPGROUND SEED MIXTURE	100	SY			\$	\$
2.16B	731E0200	FERTILIZING	2.4	TON			\$	\$
2.17B	732E0100	MULCHING	20	TON			\$	\$
2.18B	734E0604	HIGH FLOW SILT FENCE	150	FT			\$	\$
2.19B	734E0610	MUCKING SILT FENCE	20	CY			\$	\$
2.20B	734E0620	REPAIR SILT FENCE	20	FT			\$	\$
2.21B	SPECIAL	CONNECT 4" WATER MAIN TO METER PIT	1	LS			\$	\$
2.22B	SPECIAL	3" CL 200 PVC WATERMAIN	3,591	FT			\$	\$
2.23B	SPECIAL	3" CL 250 YELOMINE WATER MAIN - BORE	60	FT			\$	\$
2.24B	SPECIAL	3" 45 DEGREE BEND	4	EA			\$	\$
2.25B	SPECIAL	4" 45 DEGREE BEND	3	EA			\$	\$
2.26B	SPECIAL	UTILITY MARKER - WATER	20	EA			\$	\$
(CIRCLE ONE)								\$
BID SCHEDULE NO. 2B – WATER TRANSMISSION SYSTEM MODIFICATION TOTAL - ADD OR DEDUCT								

**BID SCHEDULE NO. 3 - 256TH STREET IMPROVEMENTS**

Item No.	Spec. Ref.	Item Description	Quantity	Units	Add "X"	Ded. "X"	Unit Price Modification	Extended Amount
3.01	009E0010	MOBILIZATION	1	LS			\$	\$
3.02	110E7150	REMOVE SIGN FOR RESET	1	EA			\$	\$
3.03	120E0010	UNCLASSIFIED EXCAVATION	15	CY			\$	\$
3.04	120E0300	BORROW UNCLASSIFIED EXCAVATION	2,160	CY			\$	\$
3.05	120E3000	PLACING EMBANKMENT	15	CY			\$	\$
3.06	210E3020	ORDINARY SHAPING	3,332	SY			\$	\$
3.07	SPECIAL	TOPSOIL STRIPPING	606	CY			\$	\$
3.08	230E0010	PLACING TOPSOIL	242	CY			\$	\$

3.09	260E1010	BASE COURSE	1,744	TON			\$	\$
3.10	450E4769	30" CORRUGATED METAL PIPE 16 GAUGE, FURNISH	6	FT			\$	\$
3.11	450E4770	30" CORRUGATED METAL PIPE, INSTALL	6	FT			\$	\$
3.12	450E5215	30" CORRUGATED METAL PIPE SLOPED ENDS, FURNISH	2	EA			\$	\$
3.13	450E5216	30" CORRUGATED METAL PIPE SLOPED ENDS, INSTALL	2	EA			\$	\$
3.14	632E1340	PERFORATED TUBE POST - TOWNSHIP ROAD	150	FT			\$	\$
3.15	632E3203	FLAT ALUMINUM SIGN, NONREMOVABLE COPY HIGH INTENSITY	12	SF			\$	\$
3.16	632E3500	RESET SIGN	1	EA			\$	\$
3.17	634E0110	TRAFFIC CONTROL SIGNS	68	SF			\$	\$
3.18	634E0120	TRAFFIC CONTROL MISCELLANEOUS	1	LS			\$	\$
3.19	634E0275	TYPE 3 BARRICADE	6	EA			\$	\$
3.20	730E0204	TYPE C PERMANENT SEED MIXTURE	60	LB			\$	\$
3.21	731E0200	FERTILIZING	0.5	TON			\$	\$
3.22	732E0100	MULCHING	4	TON			\$	\$
3.23	734E0604	HIGH FLOW SILT FENCE	124	FT			\$	\$
3.24	734E0610	MUCKING SILT FENCE	15	CY			\$	\$
3.25	734E0620	REPAIR SILT FENCE	10	FT			\$	\$
3.26	734E5010	SWEEPING	10	HR			\$	\$
(CIRCLE ONE) BID SCHEDULE NO. 3 - 256TH STREET IMPROVEMENTS MODIFICATION TOTAL - ADD OR DEDUCT								\$

**BID SCHEDULE NO. 4 - WELCOME CENTER**

Item No.	Item Description	Unit	Qty.	Add "X"	Ded. "X"	Unit Price Modification	Extended Amount
4.00						\$	\$
(CIRCLE ONE) BID SCHEDULE NO. 4 - WELCOME CENTER MODIFICATION TOTAL - ADD OR DEDUCT							\$

**BID SCHEDULE NO. 5 – COMFORT STATION**

Item No.	Item Description	Unit	Qty.	Add "X"	Ded. "X"	Unit Price Modification	Extended Amount
5.00						\$	\$
(CIRCLE ONE) BID SCHEDULE NO. 5 – COMFORT STATION MODIFICATION TOTAL - ADD OR DEDUCT							\$

**BID SCHEDULE NO. 6 – SITE ELECTRICAL/NETWORK**

Item No.	Item Description	Unit	Qty.	Add "X"	Ded. "X"	Unit Price Modification	Extended Amount
6.00						\$	\$
(CIRCLE ONE)							
BID SCHEDULE NO. 6 – SITE ELECTRICAL/NETWORK MODIFICATION TOTAL - ADD OR DEDUCT							\$

**For this project bids are deemed complete only if all bid schedules are bid. One contract will be awarded for all bid schedules.**

**MODIFICATION TO TOTAL BASE BID ALL SCHEDULES**

(CIRCLE ONE)	
TOTAL BASE BID ALL SCHEDULES MODIFICATION TOTAL - ADD OR DEDUCT	\$

The undersigned acknowledges receipt of the following addenda to the drawings and/or specifications (give number and date of each):

Addenda Nos. \_\_\_\_\_ dated \_\_\_\_\_ respectively.

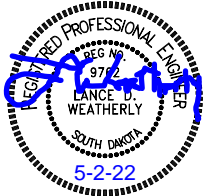
In submitting this facsimile modification bid, it is understood that the right is reserved by the Owner to reject any and all bids and to waive any irregularities. It is further understood by the Bidder that he may not withdraw his Bid within 30 days after the actual opening thereof.

BIDDER: _____ <div style="text-align: center;">(Type Name of Firm)</div>
BY: _____ <div style="text-align: center;">(Signature of Firm's Representative)</div>
_____ <div style="text-align: center;">(Type Name and Title of Firm's Representative)</div>
TELEPHONE NO. _____
FACSIMILE NO. _____
E-MAIL ADDRESS _____
BUSINESS ADDRESS _____
MAILING ADDRESS (if different) _____
STATE OF INCORPORATION _____

ESTIMATE OF QUANTITIES									
ITEM NO.	SPEC. REF.	ITEM	UNITS	QUANTITY	ITEM NO.	SPEC. REF.	ITEM	UNITS	QUANTITY
		<b>BID SCHEDULE NO.1 - CIVIL</b>					<b>BID SCHEDULE NO.2A - WATER DISTRIBUTION SYSTEM</b>		
1.01	009E0010	MOBILIZATION	LS	1	2.01A	009E0010	MOBILIZATION	LS	1
1.02	100E0020	CLEAR AND GRUB TREE	LS	1	2.02A	451E6105	CONNECT TO EXISTING WATERMAIN	EA	2
1.03	100E0100	CLEARING	LS	1	2.03A	451E0401	1" HIGH DENSITY POLYETHYLENE PIPE	FT	461
1.04	110E1700	REMOVE SILT FENCE	FT	2,748	2.04A	451E2403	4"X3" PIPE REDUCER	EA	1
1.05	110E5600	SALVAGE CATTLE GUARD	EA	2	2.05A	451E2802	1" CORPORATION STOP WITH TAPPING SADDLE	EA	5
1.06	120E0010	UNCLASSIFIED EXCAVATION	CY	13,083	2.06A	451E2806	1.5" CORPORATION STOP WITH TAPPING SADDLE	EA	2
1.07	120E0300	BORROW UNCLASSIFIED EXCAVATION	CY	14,700	2.07A	451E2902	1" CURB STOP WITH BOX	EA	10
1.08	120E1000	MUCK EXCAVATION	SY	75	2.08A	451E3103	3" PIPE CAP	EA	1
1.09	120E1100	UNCLASSIFIED/ROCK EXCAVATION	CY	100	2.09A	451E4203	3" VALVE	EA	2
1.10	120E3000	PLACING EMBANKMENT	CY	13,083	2.10A	451E4350	VALVE BOX	EA	13
1.11	210E3020	ORDINARY ROADWAY SHAPING	SY	17,089	2.11A	451E4380	TRACER WIRE ACCESS BOX, TYPE 1	EA	7
1.12	SPECIAL	TOPSOIL STRIPPING	CY	10,781	2.12A	451E4582	YARD HYDRANT	EA	1
1.13	230E0010	PLACING TOPSOIL	CY	10,284	2.13A	451E4905	TRENCH STABILIZATION MATERIAL	TON	29
1.14	SPECIAL	EXCESS TOPSOIL ON-SITE STOCKPILE	CY	500	2.14A	451E4926	WATER MAIN BEDDING MATERIAL	FT	6,766
1.15	260E1010	BASE COURSE	TON	8,390	2.15A	451E7520	EXPLORATORY EXCAVATION	HR	5
1.16	450E4520	48" ARCH CORRUGATED METAL PIPE FLARED ENDS, FURNISH	EA	4	2.16A	634E0110	TRAFFIC CONTROL SIGNS	SF	32
1.17	450E4521	48" ARCH CORRUGATED METAL PIPE FLARED ENDS, INSTALL	EA	4	2.17A	730E0204	TYPE C PERMANENT SEED MIXTURE	LB	174
1.18	450E4749	15" CORRUGATED METAL PIPE 16 GAUGE, FURNISH	FT	109	2.18A	730E1200	HYDROSEEDING/HYDRAULIC STRAW MULCH - CAMPGROUND SEED MIXTURE	SY	100
1.19	450E4750	15" CORRUGATED METAL PIPE, INSTALL	FT	109	2.19A	731E0200	FERTILIZING	TON	1.6
1.20	450E4759	18" CORRUGATED METAL PIPE 16 GAUGE, FURNISH	FT	317	2.20A	732E0100	MULCHING	TON	12
1.21	450E4760	18" CORRUGATED METAL PIPE, INSTALL	FT	317	2.21A	734E0604	HIGH FLOW SILT FENCE	FT	100
1.22	450E4769	24" CORRUGATED METAL PIPE 16 GAUGE, FURNISH	FT	48	2.22A	734E0610	MUCKING SILT FENCE	CY	15
1.23	450E4770	24" CORRUGATED METAL PIPE, INSTALL	FT	48	2.23A	734E0620	REPAIR SILT FENCE	FT	10
1.24	450E5010	18" CMP ELBOW 90 DEG, FURNISH	EA	2	2.24A	SPECIAL	1.5" CL 200 PVC WATERMAIN	FT	4,654
1.25	450E5011	18" CMP ELBOW 90 DEG, INSTALL	EA	2	2.25A	SPECIAL	3" CL 200 PVC WATERMAIN	FT	1,650
1.26	450E5211	18" CORRUGATED METAL PIPE SLOPED ENDS, FURNISH	EA	8	2.26A	SPECIAL	3" TO 1.5" REDUCER	EA	1
1.27	450E5212	18" CORRUGATED METAL PIPE SLOPED ENDS, INSTALL	EA	8	2.27A	SPECIAL	1" CAP	EA	4
1.28	450E5215	24" CORRUGATED METAL PIPE SLOPED ENDS, FURNISH	EA	2	2.28A	SPECIAL	1.5" CAP	EA	5
1.29	450E5216	24" CORRUGATED METAL PIPE SLOPED ENDS, INSTALL	EA	2	2.29A	SPECIAL	1.5" SLEEVE	EA	2
1.30	450E5402	15" CORRUGATED METAL PIPE SAFETY END, FURNISH	EA	2	2.30A	SPECIAL	1.5" 45 DEGREE BEND	EA	2
1.31	450E5403	15" CORRUGATED METAL PIPE SAFETY END, INSTALL	EA	2	2.31A	SPECIAL	3" 45 DEGREE BEND	EA	3
1.32	450E5559	48" ARCH CORRUGATED METAL PIPE 12 GAUGE, FURNISH	FT	150	2.32A	SPECIAL	1.5" TEE	EA	2
1.33	450E5560	48" ARCH CORRUGATED METAL PIPE, INSTALL	FT	150	2.33A	SPECIAL	3"X1.5" REDUCER	EA	1
1.34	451E1004	4" PVC SEWER PIPE	FT	1,715	2.34A	SPECIAL	1.5" VALVE	EA	11
1.35	451E3004	4" PIPE BEND (45 DEG.)	EA	2	2.35A	SPECIAL	3" WATER MAIN RESTRAINING DEVICE	EA	1
1.36	451E3004	4" PIPE BEND (90 DEG.)	EA	32	2.36A	SPECIAL	UTILITY MARKER - WATER	EA	23
1.37	451E4943	4" SEWER PIPE BEDDING MATERIAL	FT	32			<b>BID SCHEDULE NO. 2B - WATER TRANSMISSION SYSTEM</b>		
1.38	464E0100	CONTROLLED DENSITY FILL	CY	31	2.01B	009E0010	MOBILIZATION	LS	1
1.39	632E1325	2.0"X2.0" PERFORATED TUBE POST	FT	32	2.02B	451E0604	4" CL 200 PVC WATER MAIN	FT	4,798
1.40	632E1550	MISCELLANEOUS POST HARDWARE	LS	1	2.03B	451E2204	3" TEE	EA	1
1.41	632E3203	FLAT ALUMINUM SIGN, NONREMOVABLE COPY HIGH INTENSITY	SF	22	2.04B	451E2205	4"x4" PIPE TEE	EA	1
1.42	634E0110	TRAFFIC CONTROL SIGNS	SF	52	2.05B	451E2403	4"X3" PIPE REDUCER	EA	1
1.43	634E0120	TRAFFIC CONTROL, MISCELLANEOUS	LS	1	2.06B	451E2802	1" CORPORATION STOP WITH TAPPING SADDLE	EA	5
1.44	634E0275	TYPE 3 BARRICADE	EA	6	2.07B	451E2806	1.5" CORPORATION STOP WITH TAPPING SADDLE	EA	3
1.45	650E0059	TYPE B66 CONCRETE CURB AND GUTTER	FT	124	2.08B	451E4203	3" VALVE	EA	3
1.46	651E0140	4" REINFORCED CONCRETE SIDEWALK	SF	2,748	2.09B	451E4204	4" VALVE	EA	3
1.47	SPECIAL	5.5" REINFORCED CONCRETE SIDEWALK	SF	2,452	2.10B	451E4350	VALVE BOX	EA	6
1.48	651E7000	TYPE 1 DETECTABLE WARNINGS	SQFT	40	2.11B	451E4380	TRACER WIRE ACCESS BOX, TYPE 1	EA	5
1.49	670E5205	SPECIAL GRATE - 18IN BEEHIVE GRATE	EA	2	2.12B	451E4926	WATER MAIN BEDDING MATERIAL	FT	8,389
1.50	671E1048	48" MANHOLE	EA	3	2.13B	451E6105	CONNECT 3" WATER MAIN TO METER PIT	LS	1
1.51	671E2004	4" MANHOLE BOOT	EA	4	2.14B	730E0204	TYPE C PERMANENT SEED MIXTURE	LB	274
1.52	671E4048	48" MANHOLE RISER SECTION	EA	3	2.15B	730E1200	HYDROSEEDING/HYDRAULIC STRAW MULCH - CAMPGROUND SEED MIXTURE	SY	100
1.53	671E6035	SPECIAL MANHOLE FRAME AND LID (NEENAH R1712)	EA	3	2.16B	731E0200	FERTILIZING	TON	2.4
1.54	700E0210	CLASS B RIPRAP	TON	226	2.17B	732E0100	MULCHING	TON	20
1.55	730E0204	TYPE C PERMANENT SEED MIXTURE	LB	248	2.18B	734E0604	HIGH FLOW SILT FENCE	FT	150
1.56	730E1200	HYDROSEEDING/HYDRAULIC STRAW MULCH - CAMPGROUND SEED MIXTURE	SY	68,382	2.19B	734E0610	MUCKING SILT FENCE	CY	20
1.57	731E0200	FERTILIZING	TON	16.0	2.20B	734E0620	REPAIR SILT FENCE	FT	20
1.58	732E0100	MULCHING	TON	46	2.21B	SPECIAL	CONNECT 4" WATER MAIN TO METER PIT	LS	1
1.59	734E0102	TYPE 2 EROSION CONTROL BLANKET	SY	2,635	2.22B	SPECIAL	3" CL 200 PVC WATERMAIN	FT	3,591
1.60	734E0152	6" DIAMETER EROSION CONTROL WATTLE	FT	4,000	2.23B	SPECIAL	3" CL 250 YELOMINE WATER MAIN - BORE	FT	60
1.61	734E0604	HIGH FLOW SILT FENCE	FT	2,440	2.24B	SPECIAL	3" 45 DEGREE BEND	EA	4
1.62	734E0610	MUCKING SILT FENCE	CY	361	2.25B	SPECIAL	4" 45 DEGREE BEND	EA	3
1.63	734E0620	REPAIR SILT FENCE	FT	122	2.26B	SPECIAL	UTILITY MARKER - WATER	EA	20
1.64	831E0110	TYPE B DRAINAGE FABRIC	SY	112			<b>BID SCHEDULE NO. 3 - 256TH STREET IMPROVEMENTS</b>		
1.65	831E0300	REINFORCEMENT FABRIC (MSE)	SY	24	3.01	009E0010	MOBILIZATION	LS	1
1.66	900E1310	CONCRETE WASHOUT AREA	EA	1	3.02	110E7150	REMOVE SIGN FOR RESET	EA	1
1.67	900E1320	CONSTRUCTION ENTRANCE	EA	1	3.03	120E0010	UNCLASSIFIED EXCAVATION	CY	15
1.68	900E5145	BOLLARD	EA	6	3.04	120E0300	BORROW UNCLASSIFIED EXCAVATION	CY	2,160
1.69	SPECIAL	CIP REINF. CLASS M6 CONC ISLANDS	EA	3	3.05	120E3000	PLACING EMBANKMENT	CY	15
1.70	SPECIAL	TRAILER DUMP STATION BASIN DRAIN	EA	4	3.06	210E3020	ORDINARY SHAPING	SY	3,332
1.71	SPECIAL	TRAILER DUMP STATION W/ TOWER	EA	6	3.07	SPECIAL	TOPSOIL STRIPPING	CY	606
1.72	SPECIAL	UTILITY MARKER - SEWER	EA	3	3.08	230E0010	PLACING TOPSOIL	CY	242
1.73	SPECIAL	2500 GAL PRECAST CONCRETE SEPTIC TANK	EA	6	3.09	260E1010	BASE COURSE	TON	1,744
1.74	SPECIAL	2000 GAL PRECAST CONCRETE SEPTIC TANK	EA	1	3.10	450E4769	30" CORRUGATED METAL PIPE 16 GAUGE, FURNISH	FT	6
1.75	SPECIAL	LOCKABLE ACCESS DOOR F/I	EA	3	3.11	450E4770	30" CORRUGATED METAL PIPE, INSTALL	FT	6
1.76	SPECIAL	2-LATERAL DISTRIBUTION BOX	EA	3	3.12	450E5215	30" CORRUGATED METAL PIPE SLOPED ENDS, FURNISH	EA	2
1.77	SPECIAL	8-LATERAL DISTRIBUTION BOX	EA	4	3.13	450E5216	30" CORRUGATED METAL PIPE SLOPED ENDS, INSTALL	EA	2
1.78	SPECIAL	2 WAY CLEANOUT	EA	2	3.14	632E1340	PERFORATED TUBE POST - TOWNSHIP ROAD	FT	150
1.79	SPECIAL	HIGH CAPACITY INFILTRATOR LATERALS	FT	2,600	3.15	632E3203	FLAT ALUMINUM SIGN, NONREMOVABLE COPY HIGH INTENSITY	SF	12
1.80	SPECIAL	GRANULAR BEDDING MATERIAL FOR ABSORPTION TRENCHES	TON	650	3.16	632E3500	RESET SIGN	EA	1
					3.17	634E0110	TRAFFIC CONTROL SIGNS	SF	68
					3.18	634E0120	TRAFFIC CONTROL MISCELLANEOUS	LS	1
					3.19	634E0275	TYPE 3 BARRICADE	EA	6
					3.20	730E0204	TYPE C PERMANENT SEED MIXTURE	LB	60
					3.21	731E0200	FERTILIZING	TON	0.5
					3.22	732E0100	MULCHING	TON	4
					3.23	734E0604	HIGH FLOW SILT FENCE	FT	124
					3.24	734E0610	MUCKING SILT FENCE	CY	15
					3.25	734E0620	REPAIR SILT FENCE	FT	10
					3.26	734E5010	SWEEPING	HR	10

NOTE: BID SPECIFICATION REFERENCES SDDOT STANDARD SPECIFICATIONS FOR ROADS AND BRIDGES, 2015 EDITION, UNLESS NOTED AS SPECIAL.

Addendum No. 1



Division of Administration  
Foss Building  
523 E. Capitol Ave.  
Pierre, South Dakota 57501-3182  
Phone: (605) 773 - 6082

South Dakota  
Department of Game, Fish & Parks



PROJECT NUMBER	DATE	REVISION	REVISION
255% O	04-11-2022	SP	LW
DRAWN BY			
CHECKED BY			

CAMPGROUND DEVELOPMENT  
PALISADES STATE PARK -PHASE II  
MINNEHAHA COUNTY, SOUTH DAKOTA

TITLE  
PAGE  
4-004  
OF  
4-009



SPECIFICATIONS

STANDARD SPECIFICATIONS FOR ROADS AND BRIDGES, SOUTH DAKOTA DEPARTMENT OF TRANSPORTATION, 2015 EDITION, SUPPLEMENTAL SPECIFICATIONS AND/OR SPECIAL PROVISIONS SHALL APPLY WHERE APPLICABLE FOR CONSTRUCTION AND MATERIALS DETAILS WITH THE EXCEPTION OF METHOD OF PAYMENT AND BASIS OF PAYMENT. PLANS, NOTES, AND/OR DETAILS SHALL SUPERCEDE ALL GENERAL PROVISIONS OF THE STANDARD SPECIFICATIONS.

SCOPE OF WORK

WORK COVERED UNDER THIS CONTRACT INCLUDES, BUT IS NOT LIMITED TO:

- 1. SITE WORK, INCLUDING CLEARING AND GRUBBING AND TOPSOIL STRIPPING.
- 2. EARTHWORK, INCLUDING UNCLASSIFIED EXCAVATION, EMBANKMENT, AND CORRUGATED METAL PIPE INSTALLATION.
- 3. SURFACING, INCLUDING ORDINARY SHAPING AND BASE COURSE.
- 4. CAST IN PLACE CONCRETE ISLAND INSTALLATION, INCLUDING SPECIFIED SIGNAGE INSTALLATIONS.
- 5. WATER SERVICE LINE INSTALLATIONS; VALVE, CURB STOP, AND BOX INSTALLATIONS; AND DUMP STATION WATER TOWER INSTALLATIONS.
- 6. THREE ON-SITE WASTEWATER SYSTEMS INSTALLATION.
- 7. FINISH GRADING OPERATIONS, INCLUDING TOPSOIL PLACEMENT; SEEDING AND FERTILIZING; AND EROSION CONTROL BLANKET INSTALLATION.

GENERAL NOTES

DUE TO WORK AREA CONSTRAINTS, SOME HAND WORK AND MISCELLANEOUS SMALL EQUIPMENT MAY BE NECESSARY TO ACCOMPLISH THE WORK. THE CONTRACTOR SHALL TAKE THIS INTO CONSIDERATION WHEN BIDDING THE PROJECT.

THE CONTRACTOR IS ADVISED TO VISIT THE SITE PRIOR TO BID PREPARATION TO ASCERTAIN THE AMOUNT OF WORK INVOLVED.

NO FUEL PRICE INDEXING WILL BE PROVIDED BY THE OWNER.

UTILITIES

THE CONTRACTOR SHALL NOTIFY SOUTH DAKOTA ONE CALL, 1-800-781-7474, TO LOCATE ANY UTILITY THAT MAY BE LOCATED WITHIN THE PROJECT LIMITS. THE CONTRACTOR IS RESPONSIBLE FOR ANY DAMAGE TO UTILITIES AND THE SUBSEQUENT REPAIR EXPENSE.

HAUL ROUTE

THE CONTRACTOR WILL BE RESPONSIBLE FOR DETERMINING ANY HAUL ROUTE FROM THE MATERIAL SOURCE(S) TO THE PROJECT SITE INCLUDING ANY AGREEMENTS NECESSARY WITH RESPECTIVE GOVERNMENTAL AGENCIES FOR MAINTENANCE AND RESTORATION OF THE ROUTES.

IT SHALL BE THE RESPONSIBILITY OF THE CONTRACTOR TO PREPARE THE HAUL ROUTE, MAINTAIN THE HAUL ROUTE IN A GOOD CONDITION SATISFACTORY TO THE GOVERNMENTAL AGENCY, AND UPON COMPLETION OF ITS USE, RESTORE THE HAUL ROUTE TO A CONDITION AT LEAST EQUAL TO THAT WHICH EXISTED AT THE TIME HAULING OPERATIONS BEGAN.

THE FACT THAT OTHER GENERAL AND NORMAL TRAFFIC HAS USED THE HAUL ROUTE OR PORTION OF IT CONCURRENTLY SHALL NOT RELIEVE THE CONTRACTOR OF THE OBLIGATION TO MAINTAIN AND RESTORE THE HAUL ROUTE AS REQUIRED.

WASTE DISPOSAL SITE

THE CONTRACTOR SHALL FURNISH AN OFF-SITE DISPOSAL FACILITY SUITABLE FOR AND RECOGNIZED AS SUCH FOR THE DISPOSAL OF CLEARING AND GRUBBING SPOILS; AND CONSTRUCTION DEBRIS GENERATED BY THIS PROJECT.

NOTIFICATION TO PROJECT ENGINEER

- 1. THE PROJECT ENGINEER SHALL BE NOTIFIED NO LESS THAN TWO WEEKS IN ADVANCE OF THE DATE CONSTRUCTION IS TO BEGIN.
- 2. THE PROJECT ENGINEER SHALL BE NOTIFIED PRIOR TO ANY OVER RUNS OF PLAN'S QUANTITIES.
- 3. THE PROJECT ENGINEER SHALL BE NOTIFIED 48 HOURS PRIOR TO THE PLACEMENT OF CONCRETE.

OWNER RESPONSIBILITIES

- 1. REMOVE ANY SIGNAGE RESTRICTING THE CONTRACTOR.
- 2. CONSTRUCTION STAKING
- 3. PERMITTING
- 4. CONSTRUCTION OF STRUCTURES INCLUDING CAMPING CABINS, PICNIC SHELTERS, SINGLE VAULT TOILETS (SVT), AND PLAY EQUIPMENT.

CONSTRUCTION STAKING

THE OWNER WILL PROVIDE THE CONSTRUCTION STAKING. CONSTRUCTION STAKING FOR THE PROJECT SHALL INCLUDE PROJECT SITE LIMITS; HORIZONTAL AND VERTICAL CONTROL; ALIGNMENTS AND GRADES; SLOPE INTERCEPTS; AND OTHER PROJECT SPECIFIC FEATURES SUCH AS LINES, RADII, AND CORNERS. SUBSEQUENT STAKING SHALL BE SEQUENCED AND SCHEDULED AS NECESSARY, ALLOWING A MINIMUM OF 5 BUSINESS DAYS FOR THE PREPARATION AND STAKING THEREOF. THE CONTRACTOR IS RESPONSIBLE FOR MAINTAINING STAKES AND GRADES THEREAFTER. CONTRACTOR IS RESPONSIBLE FOR RESTAKING COSTS. NO SEPARATE PAYMENT WILL BE MADE TO MAINTAIN GRADE STAKES. DIGITAL SURFACE FILES WILL BE MADE AVAILABLE TO THE CONTRACTOR UPON REQUEST.

SEQUENCE OF OPERATIONS

ALL WORK SCHEDULES SHALL BE COORDINATED WITH THE PROJECT ENGINEER IN THE FIELD. THE CONTRACTOR SHALL SUBMIT A CONSTRUCTION SEQUENCE AND SCHEDULE FOR APPROVAL. IT IS RECOGNIZED AND ACKNOWLEDGED THAT MULTIPLE OPERATIONS CAN AND WILL COINCIDE SIMULTANEOUSLY.

COMPLETION DATE

BID SCHEDULE NO. 4 - WELCOME CENTER SHALL BE COMPLETE BY APRIL 1, 2023. ALL SEEDING ON THE PROJECT SHALL BE COMPLETE BY APRIL 26, 2023. BID SCHEDULES 1, 2A, 2B, 3, 5, AND 6 SHALL BE COMPLETE BY MAY 5, 2023. LIQUIDATED DAMAGES FOR WORK NOT COMPLETE BY APRIL 1, 2023 FOR BID SCHEDULE NO. 4 - WELCOME CENTER SHALL BE ASSESSED AT THE AMOUNT SPECIFIED IN TABLE B OF THE SDDOT CURRENT EDITION OF THE STANDARD SPECIFICATION FOR ROADS AND BRIDGES PER CALENDAR DAY UNTIL THE REMAINING WORK IS DETERMINED COMPLETE. LIQUIDATED DAMAGES FOR WORK NOT COMPLETE BY APRIL 26, 2023 FOR ALL SEEDING ON THE PROJECT SHALL BE ASSESSED AT THE AMOUNT SPECIFIED IN TABLE B OF THE SDDOT CURRENT EDITION OF THE STANDARD SPECIFICATION FOR ROADS AND BRIDGES PER CALENDAR DAY UNTIL THE REMAINING WORK IS DETERMINED COMPLETE. LIQUIDATED DAMAGES FOR WORK NOT COMPLETE BY MAY 5, 2023 FOR BID SCHEDULES 1, 2A, 2B, 3, 5, AND 6 SHALL BE ASSESSED AT THE AMOUNT SPECIFIED IN TABLE A OF THE SDDOT CURRENT EDITION OF THE STANDARD SPECIFICATION FOR ROADS AND BRIDGES PER CALENDER DAY UNTIL THE REMAINING WORK IN DETERMINED COMPLETE.

SEASONAL LIMITATIONS AND TEMPERATURE REQUIREMENTS

SEASONAL LIMITATIONS AND TEMPERATURE REQUIREMENTS, AS SPECIFIED IN THE SDDOT STANDARD SPECIFICATIONS, SHALL APPLY FOR THIS PROJECT. UPON WRITTEN REQUEST FROM THE CONTRACTOR, THE SEASONAL LIMITATIONS MAY BE REVIEWED AND MAY BE AMENDED BY THE PROJECT ENGINEER, PROVIDED TEMPERATURE AND WEATHER REQUIREMENTS ARE STILL MET.

ALLOWABLE WORK HOURS

CONSTRUCTION ACTIVITIES, INCLUDING THE HAULING OF MATERIALS FOR THE CAMPGROUND EXPANSION AREA AND INCLUDING THE WATER CONNECTION TO THE EXISTING PARK NORTH OF THE CAMPGROUND EXPANSION AREA LOOP, SHALL BE LIMITED TO THE FOLLOWING:

- DAYLIGHT HOURS ONLY (8:00 A.M. - 8:00P.M.), MONDAY – THURSDAY.
- CONSTRUCTION ACTIVITIES FOR THE WEEK SHALL END BY NOON ON FRIDAY.
- NO WEEKEND CONSTRUCTION ACTIVITIES WILL BE ALLOWED.

DISRUPTIONS TO THE PARK WATER SYSTEM FOR WATER TIE-INS SHALL NOT OCCUR WITHIN THE FOLLOWING TIME FRAMES:

- FRIDAY THRU SUNDAY ON A WEEKLY RECURRING BASIS DUE TO PARK USAGE.
- THE WEEK (6/27/22-7/1/22) PRIOR OR THRU THE 7/4/22 HOLIDAY.

ADJUSTMENTS TO ALLOWABLE WORK HOURS AND TIME FRAMES MAY BE REQUESTED IN ADVANCE WITH REASONABLE NOTICE TO COORDINATE WITH PARK STAFF AND SHALL BE SUBJECT TO APPROVAL BY THE PROJECT MANAGER IN THE FIELD.

CERTIFICATION AND TESTING

THE CONTRACTOR SHALL PROVIDE CERTIFICATION DOCUMENTATION FOR ALL MATERIALS DELIVERED TO THE PROJECT SITE. APPROPRIATE SAMPLING AND TESTING IN COMPLIANCE WITH THE SDDOT STANDARD SPECIFICATIONS AND/OR THE GOVERNING STANDARD SPECIFIED RESPECTIVE TO THE ITEM SHALL APPLY.

MATERIALS TESTING (SOILS AND CONCRETE) WILL BE COMPLETED BY THE OWNER. ALL OTHER TESTING SHALL BE COMPLETE BY THE CONTRACTOR AND IS INCIDENTAL TO THE ASSOCIATED BID ITEMS. ADDITIONAL RANDOM DENSITIES, AGGREGATE TESTING, DEPTH MEASUREMENTS, AND OTHER PROJECT SPECIFIC PARAMETERS MAY BE REQUESTED AND SHALL BE PROVIDED AT THE OWNER'S EXPENSE. ANY RETESTING DUE TO FAILED INITIAL TESTS SHALL BE PROVIDED AT THE CONTRACTOR'S EXPENSE.

PROJECT CONTACTS

LANCE WEATHERLY, PE, CIVIL PROJECT ENGINEER  
DAVE LORANG, AIA, ARCHITECT  
BANNER ASSOCIATES, INC.  
(855) 323-6342

TYLER ULRICH, ENGINEER III  
SOUTH DAKOTA GAME, FISH, AND PARKS - ENGINEERING  
(605) 280-4731

JOHN WEELDREYER, PE, ENGINEER III  
SOUTH DAKOTA GAME, FISH AND PARKS - ENGINEERING  
(855) 773-4619

LUKE DRECKMAN, DISTRICT PARK SUPERVISOR  
SOUTH DAKOTA GAME, FISH, AND PARKS - DIVISION OF PARKS AND RECREATION  
(855) 594-3824

MOBILIZATION

LUMP SUM PAYMENT FOR EXPENSES INCURRED BY THE CONTRACTOR BEFORE ACTUAL PROJECT CONSTRUCTION BEGINS; INCLUDING BUT NOT LIMITED TO, BRINGING PERSONNEL, EQUIPMENT, SUPPLIES, AND INCIDENTALS TO THE SITE; ESTABLISHING TEMPORARY OFFICES AND OTHER FACILITIES; CONSTRUCTING SECURITY FENCES; OBTAINING TEMPORARY UTILITIES; AND PAYING PREMIUMS ON BONDS AND INSURANCE POLICIES. PROGRESS PAYMENTS, WHEN APPLICABLE, WILL BE MADE AS FOLLOWS:

- 1. WHEN 5% OF THE TOTAL ORIGINAL CONTRACT AMOUNT HAS BEEN EARNED FROM OTHER ITEMS ON THE BID SCHEDULE, 50% OF THE AMOUNT BID FOR MOBILIZATION WILL BE PAID, EXCLUSIVE OF ANY AMOUNT ALREADY PAID BY THE CONTRACTOR FOR BOND PREMIUMS.
- 2. WHEN 10% OF THE TOTAL ORIGINAL CONTRACT AMOUNT HAS BEEN EARNED, THE BALANCE OF THE AMOUNT BID FOR MOBILIZATION WILL BE PAID.

CLEARING

THE CONTRACTOR SHALL REMOVE THE BRUSH AND WOODY VEGETATION FROM THE PROJECT SITE AS PER THE PLAN DRAWINGS AND/OR AS DELINEATED IN THE FIELD IN ACCORDANCE WITH SECTION 100 OF THE SDDOT STANDARD SPECIFICATIONS FOR ROADS AND BRIDGES, 2015 EDITION, AS IT PERTAINS TO THE PROJECT.

THE CONTRACTOR SHALL FURNISH AN OFF-SITE DISPOSAL FACILITY SUITABLE FOR AND RECOGNIZED AS SUCH FOR THE DISPOSAL OF THE CLEARING AND GRUBBING SPOILS GENERATED BY THIS PROJECT.

PAYMENT SHALL BE BY LUMP SUM AND SHALL INCLUDE ALL COSTS FOR CLEARING AND GRUBBING, INCLUDING OFF-SITE DISPOSAL, TO COMPLETE THE WORK AS SPECIFIED.

CLEAR AND GRUB TREE

THE LUMP SUM PAYMENT FOR "CLEAR AND GRUB TREE" WILL BE FULL COMPENSATION FOR ALL REMOVAL AND DISPOSAL OF TREES, STUMPS AND ASSOCIATED MATERIAL. THE CONTRACTOR SHALL CUT THESE TREES LEVEL WITH THE GROUND AND GRIND THE STUMP 8" BELOW GROUND LINE. ALL COSTS ASSOCIATED WITH THIS WORK IS CONSIDERED INCIDENTAL TO THE CONTRACT UNIT PRICE FOR CLEAR AND GRUB TREE.

THE CONTRACTOR SHALL FURNISH AN OFF-SITE DISPOSAL FACILITY SUITABLE FOR AND RECOGNIZED AS SUCH FOR THE DISPOSAL OF THE TREES, CLEARING AND GRUBBING SPOILS GENERATED BY THIS PROJECT.

TOPSOIL STRIPPING; TOPSOIL PLACEMENT; AND ON-SITE STOCKPILE

THE CONTRACTOR SHALL STRIP 6” TOPSOIL FROM THE PROJECT SITE AS PER THE PLAN DRAWINGS AND/OR AS DELINEATED IN THE FIELD IN ACCORDANCE WITH SECTIONS 120 AND 230 OF THE SDDOT STANDARD SPECIFICATIONS FOR ROADS AND BRIDGES, 2015 EDITION, AS THEY PERTAIN TO THE PROJECT.

PAYMENT FOR TOPSOIL STRIPPING SHALL BE BY THE CUBIC YARD AND SHALL INCLUDE ALL COSTS NECESSARY TO COMPLETE THE WORK AS SPECIFIED.

Addendum No. 1



Division of Administration  
Foss Building  
523 E. Capitol Ave.  
Pierre, South Dakota 57501-3182  
Phone: (605) 773 - 6082



PROJECT NUMBER	DATE	REVISION	REVISION
255% O	04-11-2022	5P	LW
DRAWN BY		CHECKED BY	

TITLE CAMPGROUND DEVELOPMENT  
PALISADES STATE PARK -PHASE II  
MINNEHAHA COUNTY, SOUTH DAKOTA

PAGE  
C-010  
C-012



HYDROSEEDING/ HYDRAULIC STRAW MULCHING (CONT.)

HYDRAULIC STRAW MULCH WILL BE APPLIED TO THE PROJECT AREA THAT WILL HAVE DISTURBED SOILS AND DELINEATED IN THE PLANS. HYDRAULIC STRAW MULCH WILL NOT BE PLACED IN CHANNELS. HYDRAULIC STRAW MULCH WILL BE APPLIED AFTER HYDROSEEDING AND BEFORE WATER FOR VEGETATION. AREAS DESIGNATED FOR HYDRAULIC STRAW MULCH APPLICATION DO NOT REQUIRE A GRASS HAY OR STRAW MULCH APPLICATION. THE APPLICATION RATE 4,000 POUNDS PER ACRE.

PAYMENT FOR HYDROSEEDING & HYDRAULIC STRAW MULCH SHALL BE BY THE SQUARE YARD AND SHALL INCLUDE ALL COSTS FOR FURNISHING AND APPLYING THE APPROPRIATE SEED MIXTURES, THE HYDRAULIC STRAW MULCH INCLUDING THE MANUFACTURER RECOMMENDED SOIL STABILIZER OR TACKIFIER, HAULING, MATERIALS, EQUIPMENT, LABOR, AND ALL INCIDENTALS NECESSARY TO COMPLETE THE WORK AS SPECIFIED.

DRILL/ BROADCAST SEEDING

HYDROSEEDING AND FERTILIZING OPERATIONS OF THE PROJECT SHALL BE DONE IN ACCORDANCE WITH SECTIONS 730 AND 731 OF THE SDDOT STANDARD SPECIFICATIONS FOR ROADS AND BRIDGES, 2015 EDITION, AS THEY PERTAIN TO THE PROJECT; IN ACCORDANCE WITH THE PLAN DRAWINGS AND DETAILS WITHIN, AND/OR AS DELINEATED IN THE FIELD AT THE DIRECTION OF THE PROJECT ENGINEER.

THE CONTRACTOR SHALL FURNISH AND INSTALL GRASS SEED AND FERTILIZER TO RESTORE THE PROJECT SITE TURF. ALL PERMANENT SEED SHALL BE PLANTED IN THE TOPSOIL AT A DEPTH OF 1/4" TO 1/2".

THE SPECIFIED DRILL/BROADCAST SEED MIX SHALL BE TYPE C PERMANENT SEED MIXTURE. SEED MIXTURE ANALYSIS CERTIFICATE'S SHALL BE SUBMITTED TO THE PROJECT ENGINEER. THE AREAS TO BE SEEDED CONSIST OF ALL NEWLY GRADED AREAS WITHIN THE PROJECT LIMITS EXCEPT FOR THE TOP OF ROADWAYS, TEMPORARY EASEMENTS UNDER CULTIVATION, AND AREAS DESIGNATED TO BE HYDROSEEDED. BROADCAST SEED MUST BE RAKED OR DRAGGED IN UTILIZING CONVENTIONAL METHODS.

TYPE C PERMANENT SEED MIXTURE		
GRASS SPECIES	VARIETY	PLS (POUNDS/ACRE)
WESTERN WHEATGRASS	FLINTLOCK, RODAN, ROSANA	16
CANADA WILDRYE	MANDAN	2
OATS OR SPRING WHEAT		10
	TOTAL	28

THE SPECIFIED SEED MIX SHALL BE TYPE C PERMANENT SEED MIXTURE AS CLASSIFIED BY SDDOT. SEED MIXTURE ANALYSIS CERTIFICATE SHALL BE SUBMITTED TO THE PROJECT ENGINEER. IN ADDITION TO THE TYPE C PERMANENT SEED MIXTURE, OATS OR SPRING WHEAT SHALL ALSO BE INCLUDED IN THE SEED MIXTURE AS SHOWN.

THE ESTIMATE OF AREA FOR TYPE C SEED MIXTURE TO BE RESTORED FOR THIS PROJECT IS 65,176 SY = 13.5 ACRE±; WHEREBY THE PROJECT REQUIRES 432# PLS WESTERN WHEATGRASS, 54# PLS CANADA WILDRYE, AND 270# PLS OATS OR SPRING WHEAT, ALL TO BE APPLIED AT DOUBLE THE SPECIFIED APPLICATION RATES ABOVE.

PAYMENT FOR DRILL/ BROADCAST SEEDING SHALL BE PER POUND OF SEED AND SHALL INCLUDE ALL COSTS FOR FURNISHING AND APPLYING THE APPROPRIATE SEED MIXTURE, HAULING, MATERIALS, EQUIPMENT, LABOR, AND ALL INCIDENTALS NECESSARY TO COMPLETE THE WORK AS SPECIFIED.

FERTILIZING

THE CONTRACTOR WILL APPLY AN ALL-NATURAL SLOW RELEASE FERTILIZER PRIOR TO ALL SEEDING. THE ALL-NATURAL FERTILIZER WILL HAVE A MINIMUM GUARANTEED ANALYSIS OF 4-4-4 AND BE USDA CERTIFIED BIOBASED. IT SHOULD PROVIDE A MINIMUM OF 4% (N) NITROGEN WITH A MINIMUM WATER INSOLUBLE NITROGEN (WIN) FRACTION OF 2.07%, A MINIMUM OF 4% (P2O5) AVAILABLE PHOSPHATE, A MINIMUM OF 4% (K2O) SOLUBLE POTASH, AND A MAXIMUM CARBON TO NITROGEN RATIO (C:N RATIO) OF 5:1. THE ALL-NATURAL FERTILIZER WILL BE FREE OF WEED-SEED AND PATHOGENS ACCOMPLISHED THROUGH THERMOPHILIC COMPOSTING, AND NOT MECHANICAL OR CHEMICAL STERILIZATION, TO ASSURE PRESENCE OF BENEFICIAL SOIL MICROBIOLOGY. THE FERTILIZER WILL HAVE A NEAR NEUTRAL PH, A LOW SALT INDEX, A LOW BIOLOGICAL OXYGEN DEMAND, CONTAIN ORGANIC HUMIC AND FULVIC ACIDS, AND HAVE HIGH AEROBIC ORGANISM COUNTS. THE FERTILIZER WILL ALSO BE STABLE, FREE OF BAD ODORS, AND BE UNATTRACTIVE AS A FOOD SOURCE FOR ANIMALS. IT SHOULD ALSO BE IN A GRANULAR FORM THAT IS EASILY SPREAD.

THE FERTILIZER WILL BE APPLIED AT A RATE OF 1,000 POUNDS PER ACRE IN ACCORDANCE WITH THE MANUFACTURER'S RECOMMENDED METHOD OF APPLICATION. A FERTILIZER ANALYSIS

CERTIFICATE SHALL BE SUBMITTED TO THE PROJECT ENGINEER. THE FERTILIZER APPLICATION RATE SHALL REMAIN THE SAME, WHEREBY THE PROJECT REQUIRES 60 POUNDS PER ACRE OF THE SPECIFIED STARTER FERTILIZER TO BE APPLIED IN ACCORDANCE WITH THE SPECIFIED APPLICATION RATE ABOVE.

PAYMENT FOR FERTILIZING SHALL BE PER TON OF MATERIAL AND SHALL INCLUDE ALL COSTS FOR FURNISHING AND APPLYING THE APPROPRIATE FERTILIZER MIXTURE, HAULING, MATERIALS, EQUIPMENT, LABOR AND ALL INCIDENTALS NECESSARY TO COMPLETE THE WORK AS SPECIFIED.

MULCHING

THE CONTRACTOR SHALL FURNISH AND INSTALL MULCHING IN ACCORDANCE WITH SDDOT STANDARD SPECIFICATIONS FOR ROADS AND BRIDGES, 2015 EDITION, AS IT PERTAINS TO THE PROJECT; IN ACCORDANCE WITH THE PLAN DRAWINGS AND DETAILS PROVIDED WITHIN, AND/OR AS DELINEATED IN THE FIELD AT THE DIRECTION OF THE PROJECT ENGINEER.

ADDITIONAL 57 TONS OF GRASS HAY OR STRAW MULCH HAS BEEN ADDED TO THE ESTIMATE OF QUANTITIES FOR TEMPORARY EROSION CONTROL ON AREAS WHERE DRILL/ BROADCAST SEEDING SHALL TAKE PLACE.

IF THE CONTRACTOR USES A NO-TILL DRILL, MULCH MAY BE APPLIED PRIOR TO SEEDING AND THE MULCH CAN THEN BE PUNCHED INTO THE SOIL BY THE NO-TILL DRILL. IF THE CONTRACTOR USES THIS PROCESS, THE NO-TILL DRILL SEEDING WILL BE COMPLETED IMMEDIATELY FOLLOWING THE MULCH APPLICATION AND THE MULCH WILL BE PUNCHED INTO THE SOIL AT A 3-INCH DEPTH.

PAYMENT FOR MULCHING SHALL BE PER TON OF MATERIAL AND SHALL INCLUDE ALL COSTS FOR FURNISHING AND APPLYING THE APPROPRIATE MULCH, HAULING, MATERIALS, EQUIPMENT, LABOR AND ALL INCIDENTALS NECESSARY TO COMPLETE THE WORK AS SPECIFIED.

EROSION CONTROL BLANKET

THE CONTRACTOR SHALL FURNISH AND INSTALL TYPE 2 EROSION CONTROL BLANKET IN ACCORDANCE WITH SECTION 734 OF THE SDDOT STANDARD SPECIFICATIONS FOR ROADS AND BRIDGES, 2015 EDITION, AS IT PERTAINS TO THE PROJECT; IN ACCORDANCE WITH THE PLAN DRAWINGS AND DETAILS PROVIDED WITHIN, AND/OR AS DELINEATED IN THE FIELD AT THE DIRECTION OF THE PROJECT ENGINEER. THE EROSION CONTROL BLANKET UTILIZED SHALL BE FROM THE SDDOT APPROVED PRODUCTS LIST.  
[HTTP://SDDOT.COM/BUSINESS/CERTIFICATION/PRODUCTS/DEFAULT.ASPX](http://sddot.com/business/certification/products/default.aspx)

PAYMENT SHALL BE BY THE SQUARE YARD, FURNISHED AND INSTALLED, AND SHALL INCLUDE ALL COSTS NECESSARY TO COMPLETE THE WORK AS SPECIFIED.

SILT FENCE

MAINTENANCE REQUIREMENTS: AREAS OF DAMAGE INCLUDING WATER DAMAGE, FABRIC TEARS, AND FAILURES SHALL BE REPAIRED. WHEN ACCUMULATED SEDIMENT REACHES ONE HALF OF THE HEIGHT OF THE FENCE, NEW SILT FENCE SHALL BE INSTALLED. WHEN SITE CONDITIONS REQUIRE THAT SILT FENCE BE CLEANED AND MUCKED OUT, RATHER THAN REPLACED, CARE MUST BE TAKEN TO ENSURE THE EXISTING SILT FENCE IS NOT DAMAGED.

MUCKING SILT FENCE IS THE REMOVAL OF MUCK TRAPPED BY THE SILT FENCE AS DESCRIBED ABOVE. REMOVED MUCK SHOULD BE SPREAD OUT AND STABILIZED WITHIN THE PROJECTS LIMITS OR AT AN ALTERNATE LOCATION APPROVED BY THE ENGINEER.

REPAIR SILT FENCE SHALL CONSIST OF REPAIRING SILT FENCE TO MEET INSTALLATION REQUIREMENTS SPECIFIED IN THE PLANS.

MEASUREMENT: SILT FENCE WILL BE MEASURED TO THE NEAREST FOOT. MUCKING SILT FENCE WILL BE MEASURED TO THE NEAREST CUBIC YARD. REPAIR SILT FENCE WILL BE MEASURED TO THE NEAREST FOOT. REPAIR SILT FENCE WILL ONLY BE MEASURED IF THE CORRESPONDING BID ITEM HAS BEEN INCLUDED IN THE PLANS. IF INCLUDED, REPAIR SILT FENCE WILL ONLY BE MEASURED WHEN NEEDED FOR DAMAGE CAUSED BY RUNOFF. NO MEASUREMENT WILL BE MADE FOR SILT FENCE DAMAGED BY THE CONTRACTOR'S METHODS AND OPERATIONS. REMOVE SILT FENCE WILL BE MEASURED TO THE NEAREST FOOT.

PAYMENT: SILT FENCE WILL BE PAID FOR AT THE CONTRACT UNIT PRICE PER FOOT. PAYMENT SHALL BE FULL COMPENSATION FOR FURNISHING, INSTALLING, MAINTAINING EXCEPT AS OTHERWISE NOTED, LABOR, EQUIPMENT AND INCIDENTALS. MUCKING SILT FENCE WILL BE PAID FOR AT THE CONTRACT UNIT PRICE PER CUBIC YARD. PAYMENT WILL BE FULL COMPENSATION FOR LABOR, EQUIPMENT AND INCIDENTALS REQUIRED TO REMOVE, SPREAD THIS MATERIAL EVENLY OVER THE ADJACENT AREA AS DETERMINED BY THE ENGINEER, AND SEED. REPAIR SILT FENCE WILL BE PAID FOR AT THE CONTRACT UNIT PRICE PER FOOT IF SPECIFIED. PAYMENT SHALL BE FULL COMPENSATION FOR REPAIR AND INSPECTION OF THE SILT FENCE. IF THE CORRESPONDING BID ITEM HAS NOT BEEN INCLUDED IN THE PLANS, REPAIRING SILT FENCE WILL

BE CONSIDERED INCIDENTAL TO THE CONTRACT. REMOVE SILT FENCE WILL BE PAID FOR AT THE CONTRACT UNIT PRICE PER FOOT. PAYMENT SHALL BE FULL COMPENSATION FOR LABOR, EQUIPMENT, AND INCIDENTALS.

EROSION CONTROL WATTLE

CONSTRUCTION REQUIREMENTS: THE CONTRACTOR SHALL PROVIDE CERTIFICATION THAT THE SEDIMENT CONTROL WATTLES DO NOT CONTAIN NOXIOUS WEED SEEDS.

MAINTENANCE: SEDIMENT SHALL BE REMOVED ON A ROUTINE BASIS WHEN THE LEVEL OF SEDIMENTATION REACHES ONE-HALF THE HEIGHT OF THE EXPOSED WATTLE. DAMAGED AREAS SHOULD BE REPAIRED IMMEDIATELY UNTIL THE VEGETATION IS ESTABLISHED AND GROWING THROUGH THE MATERIAL.

MEASUREMENT: SEDIMENT CONTROL WATTLES SHALL BE MEASURED TO THE NEAREST FOOT.

PAYMENT: SEDIMENT CONTROL WATTLES SHALL BE PAID FOR AT THE CONTRACT UNIT PRICE PER LINEAL FOOT. PAYMENT FOR ALL MATERIALS, LABOR AND EQUIPMENT NECESSARY TO INSTALL, MAINTAIN, REPAIR, AND REMOVE THE SEDIMENT CONTROL WATTLES SHALL BE INCLUDED IN THE CONTRACT UNIT PRICE PER LINEAL FOOT.

MATERIALS: THE EROSION CONTROL WATTLE SHALL BE WITH BIODEGRADABLE NETTING AND SELECTED FROM THE SDDOT APPROVED PRODUCTS LIST.

CONSTRUCTION ENTRANCE

MAINTENANCE REQUIREMENTS: CONSTRUCTION ENTRANCE SHOULD BE INSPECTED FREQUENTLY TO ENSURE THAT MUD AND DIRT ARE NOT BEING TRACKED ONTO THE ROADWAY. CONSTRUCTION ENTRANCE MATERIAL MUST BE CLEANED OR REPLACED WHEN THE EFFECTIVENESS OF DIRT REMOVAL IS REDUCED.

MEASUREMENT: CONSTRUCTION ENTRANCE WILL BE MEASURED PER EACH. ADDITIONAL MEASUREMENT WILL NOT BE MADE FOR CONSTRUCTION ENTRANCE THAT HAS BEEN MAINTAINED, WHICH INCLUDES REPLACEMENT OR REPAIR AT INDIVIDUAL LOCATIONS OR FOR CONSTRUCTION ENTRANCE REMOVED AND RESET IN THE SAME LOCATION TO FACILITATE THE CONTRACTOR'S METHOD OF OPERATION.

PAYMENT: CONSTRUCTION ENTRANCE WILL BE PAID FOR AT THE CONTRACT UNIT PRICE PER EACH. PAYMENT SHALL BE FULL COMPENSATION FOR ALL MATERIALS, LABOR, EQUIPMENT, AND INCIDENTALS REQUIRED TO INSTALL, MAINTAIN, AND REMOVE THE CONSTRUCTION ENTRANCE.

IN LIEU OF INSTALLING CONSTRUCTION ENTRANCE THE CONTRACTOR MAY INSTALL A 16' X 45' AGES (APPLIED GEO-ENVIRONMENTAL SOLUTION) MUD MAT OR APPROVED EQUAL. KNOWN LOCAL SUPPLIER OF MUD MAT IS BROCK WHITE. MUD MAT MUST BE INSTALLED AND MAINTAINED AS PER MANUFACTURER'S INSTRUCTIONS. MANUFACTURER'S INSTRUCTIONS MUST BE SUBMITTED TO THE ENGINEER PRIOR TO THE INSTALLATION. IF IT IS DETERMINED BY THE ENGINEER THAT THE MUD-MAT IS NOT OPERATING EFFECTIVELY THE CONTRACTOR SHALL BE REQUIRED TO INSTALL CONSTRUCTION ENTRANCE AT NO EXTRA EXPENSE TO THE OWNER.

CONCRETE WASHOUT AREA

CONSTRUCTION REQUIREMENTS: A CONCRETE WASHOUT AREA SHALL BE INSTALLED ON THE PROJECT SITE AT A LOCATION APPROVED BY THE ENGINEER IF CONCRETE TRUCKS DELIVER CONCRETE TO THE SITE. NO WASHOUT AREA IS NECESSARY IF ALL CONCRETE TRUCKS ARE GOING TO WASH OUT AT APPROVED SITE CONSTRUCTED BY THE CONCRETE SUPPLIER.

MAINTENANCE REQUIREMENTS: THE CONCRETE WASHOUT AREA MUST BE KEPT IN A CONDITION TO MAINTAIN THE CAPACITY FOR ALL WASTED CONCRETE AND WASHOUT WATER ON THE PROJECT. MEASUREMENT: CONCRETE WASHOUT AREA WILL ONLY BE MEASURED IF THE CORRESPONDING BID ITEM HAS BEEN INCLUDED IN THE PLANS AND A CONCRETE WASHOUT AREA HAS BEEN CONSTRUCTED ON THE PROJECT SITE. MEASUREMENT FOR THE CONCRETE WASHOUT AREA WILL BE PER EACH.

Addendum No. 1



Division of Administration  
Foss Building  
523 E. Capitol Ave.  
Pierre, South Dakota 57501-3182  
Phone: (605) 773 - 6082

South Dakota  
Department of Game, Fish & Parks



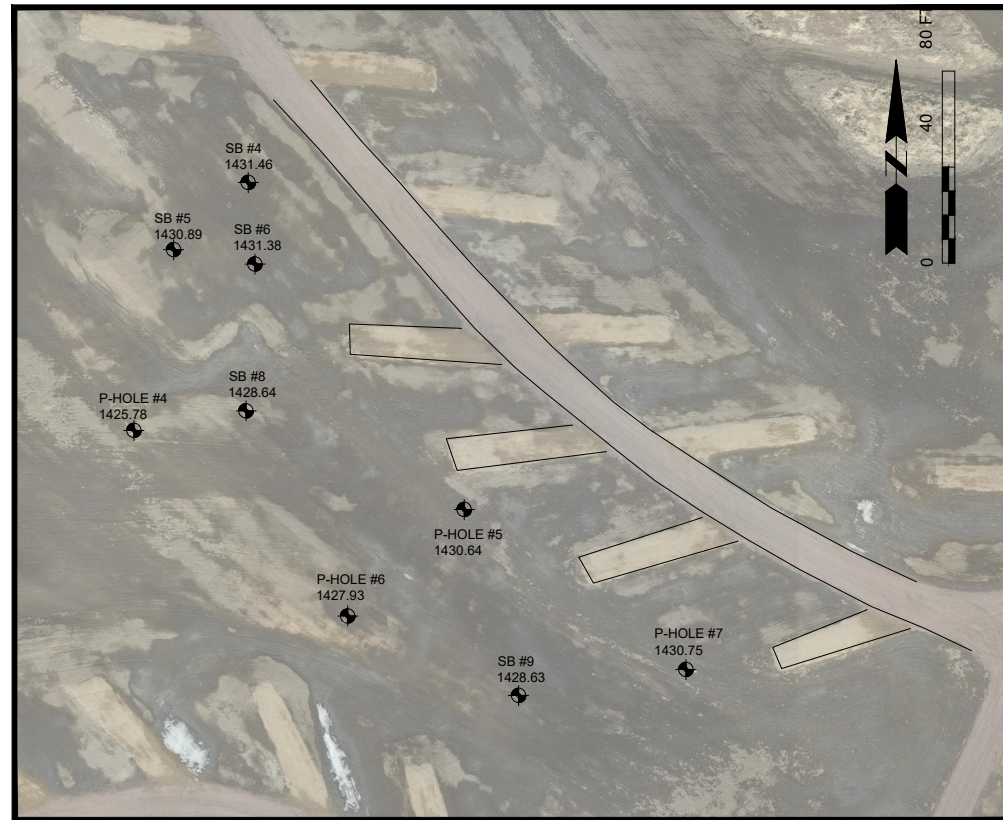
PROJECT NUMBER	DATE	04-11-2022
DRAWN BY	REVISION	
CHECKED BY	REVISION	

TITLE  
CAMPGROUND DEVELOPMENT  
PALISADES STATE PARK -PHASE II  
MINNEHAHA COUNTY, SOUTH DAKOTA

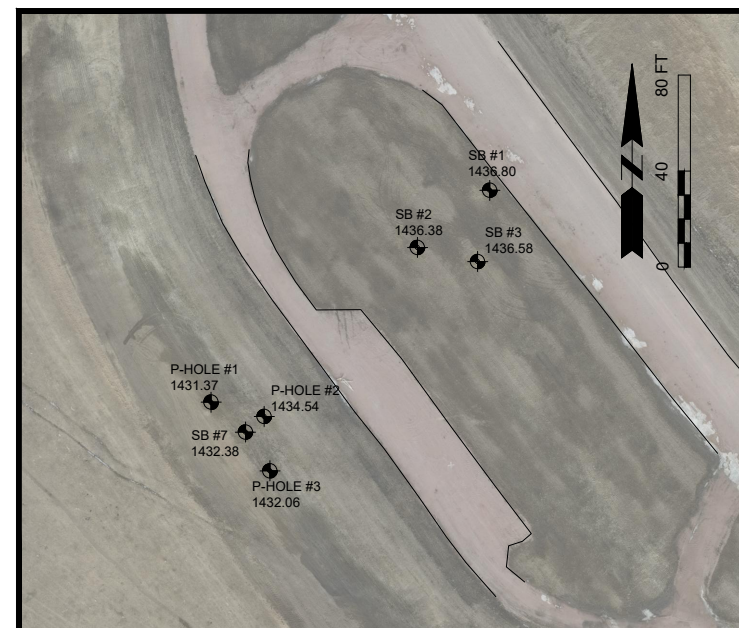
PAGE  
C-002  
OF  
C-012



# OVERALL SOIL BORINGS



COMFORT STATION AREA



WELCOME CENTER AREA



GEOTECHNICAL EXPLORATION  
PROPOSED IMPROVEMENTS  
PALISADES STATE PARK  
GEOTEK #21-M99  
DATE: 01/10/2022, 03/30/2022



Addendum No. 1



DUMP STATION AREA



**Date:** 5/2/2022**Project:** Palisades State Park**To:** All Bidders**Project #:** BS21110**From:** Connor Swiontek, PE. Todd Weidner, PE.**Project Location:** Sioux Falls, SD**Addendum Number:** 1

---

**To:** All prime contract bidders and all others to whom Drawings and Specifications have been issued by the Engineer. Acknowledge receipt of the Addendum by inserting its number and date on the Bid Form. Failure to do so may subject bidder to disqualification. This Addendum forms a part of the Contract Documents. It modifies them as follows:

### Product Approvals

The manufacturers and products, which are listed in the following texts, are approved for bidding. Final acceptance is contingent upon receipt and approval of final shop drawings. Manufacturer shall conform to all warranties, performances, size, etc., as the item specified. The burden of proof of the merit of the proposed substitution is upon the proposer. Those items not specifically listed by addendum shall not be approved for bidding.

<u>Section</u>	<u>Description</u>	<u>Manufacturer</u>
26 2416	RV Pedestal	Milbank

### Drawings

Sheet M-103 Bid Package 4 Welcome Center

1. All ceiling diffusers to have a dynamic radiant ceiling damper at penetration.
2. 14/14 SA/RA duct up into attic space to have fire damper at ceiling penetration.
3. Rotate return grilles 90 degrees to fit within 24" spaced joists

Sheet M-105 Bid Package 4 Welcome Center

1. **Register Grilles and Diffuser Schedule** – Revise S-1 and S-2 to be Price 610 16" x 16" neck. Provide with dynamic radiant ceiling damper at each ceiling penetration.

Sheet E-1005

1. Provide Ground in all pedestal feeders.

Sheet E-100 Welcome Center

1. Provide an exterior rated and mounted remote head (Type R) powered from the exit sign XE at each entrance.

Sheet E-101 Welcome Center

1. See note E358: provide (1) 3" conduit to Alliance connection point.
2. Lighting Fixture Schedule:
  - a. Add type XE provide a Lithonia LHQM-W-R-SD or equal.
  - b. Add type R provide a Lithonia ELA or equal.

**END OF DOCUMENT – CS/TW**