



**ADDENDUM NO. 1**  
**February 25, 2019**

Boat Shed  
Sisseton DOT Yard  
Roberts County, South Dakota  
GFP Project No. Siss19wa

Bid Opening Date: February 28, 2019, 3:15 PM CT  
Department of Game, Fish and Parks  
2nd Floor, Foss Building  
523 East Capitol  
Pierre, South Dakota 57501-3182

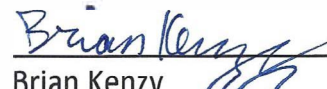
Owner: State of South Dakota  
Department of Game, Fish and Parks

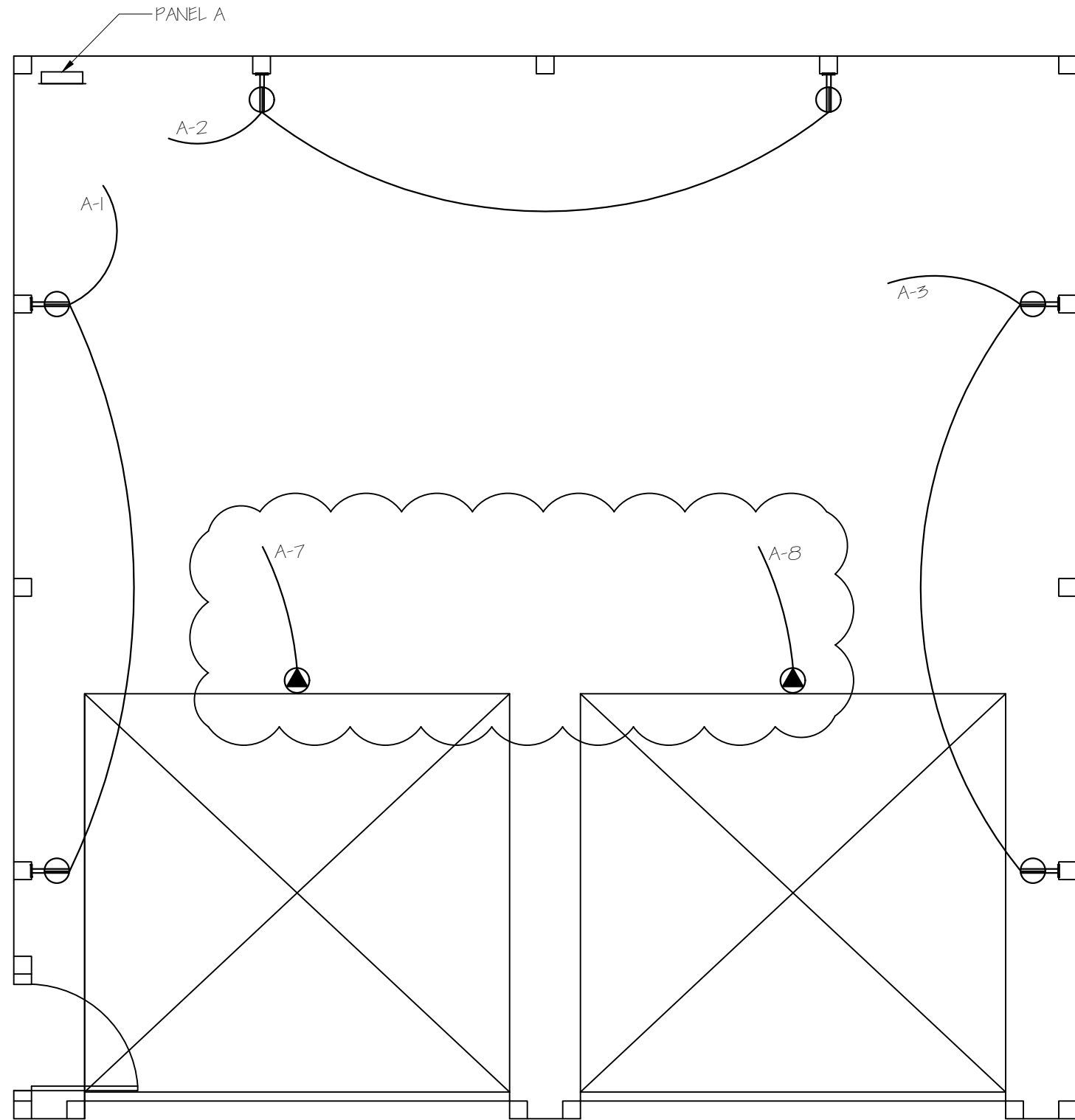
Scope of this Addendum:

The following becomes a part of the original plans and specifications, taking precedence over the items that may conflict. The bidder shall note receipt and make acknowledgment of the addendum on his bid form, incorporating its provisions in his bid.

Item No. 1: See attached Plan Sheet 6

February 25, 2019

  
\_\_\_\_\_  
Brian Kenzy  
Engineer Assistant



POWER PLAN  
SCALE 1/4" = 1'-0"

- LIGHT FIXTURE (lower case letter indicates switching)
- WALL MOUNTED LIGHT FIXTURE (upper case letter indicates fixture type)
- FLUORESCENT LIGHT FIXTURE
- SINGLE CONVENIENCE OUTLET
- DUPLEX CONVENIENCE OUTLET
- GFI DUPLEX CONVENIENCE OUTLET
- WELDER OUTLET
- SPECIAL OUTLET
- WEATHERPROOF DUPLEX OUTLET
- TELEPHONE OUTLET
- DISCONNECT SWITCH
- THERMOSTAT
- SINGLE POLE SWITCH
- THREE WAY SWITCH
- FOUR WAY SWITCH
- SWITCH (lower case letter indicates fixture switching)
- MOTOR CONNECTION
- CONDUIT SEAL
- HOME RUN TO PANEL (letter-panel,number-circuit breaker)

PANEL "A" TYPE NQO SURFACE MOUNT 100 AMP MAIN & MAIN BREAKER									
120 / 240 / 1φ / 3 WIRE									
LOAD	P	CIR BKR	CIR NO	PH	CIR NO	CIR BKR	P	LOAD	
OUTLETS	1	20	1	A	2	20	1	OUTLETS	
OUTLETS	1	20	3	B	4	20	1	SHED LIGHTS	
SHED LIGHTS	1	20	5	A	6	20	1	OUTDOOR LIGHT	
OVERHEAD DOOR OPENER	1	20	7	B	8	20	1	OVERHEAD DOOR OPENER	
SPARE	1	20	9	A	10	20	1	SPARE	
			11	B	12				
			13	A	14				
			15	B	16				
			17	A	18				
			19	B	20				
			21	A	22				
			23	B	24				