



ADDENDUM NO. 1
June 22, 2018

Trailer Dump Station and Fish Cleaning Station
Shadehill Recreation Area
Perkins County, South Dakota
GFP Project No. Shad19Pc; OSE# G2118--20X/DEL

Bid Opening Date: June 28, 2018, 3:00 PM CT
Department of Game, Fish and Parks
2nd Floor, Foss Building
523 East Capitol
Pierre, South Dakota 57501-3182


Owner: State of South Dakota
Department of Game, Fish and Parks

Scope of this Addendum:

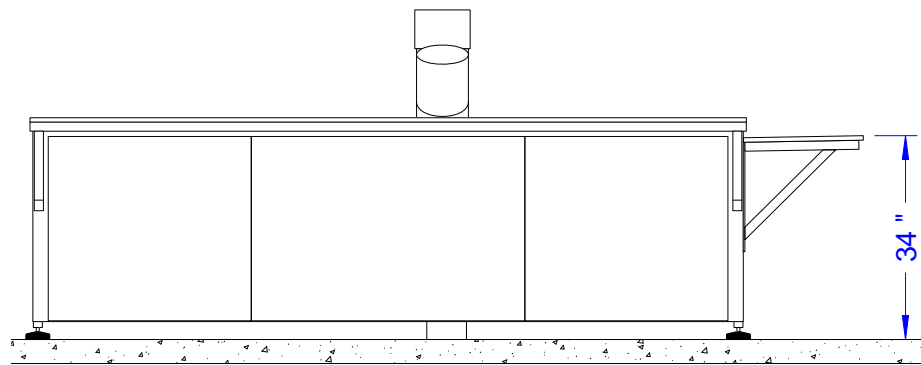
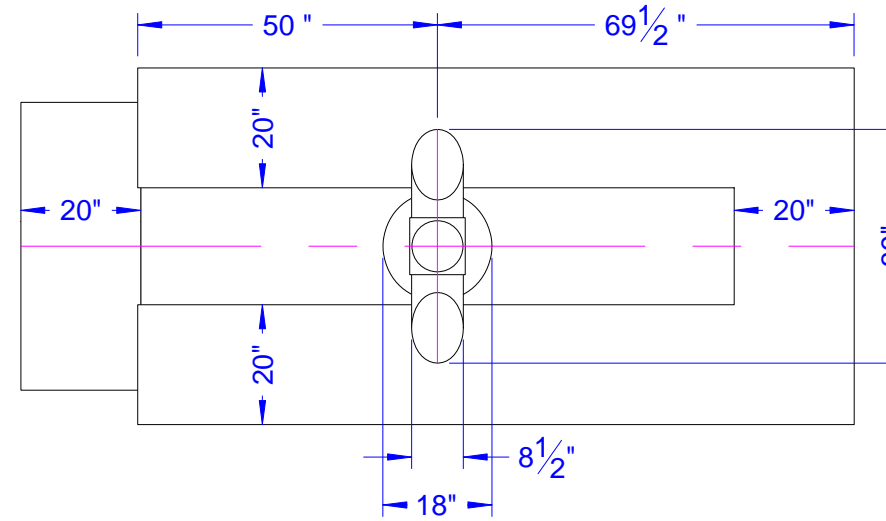
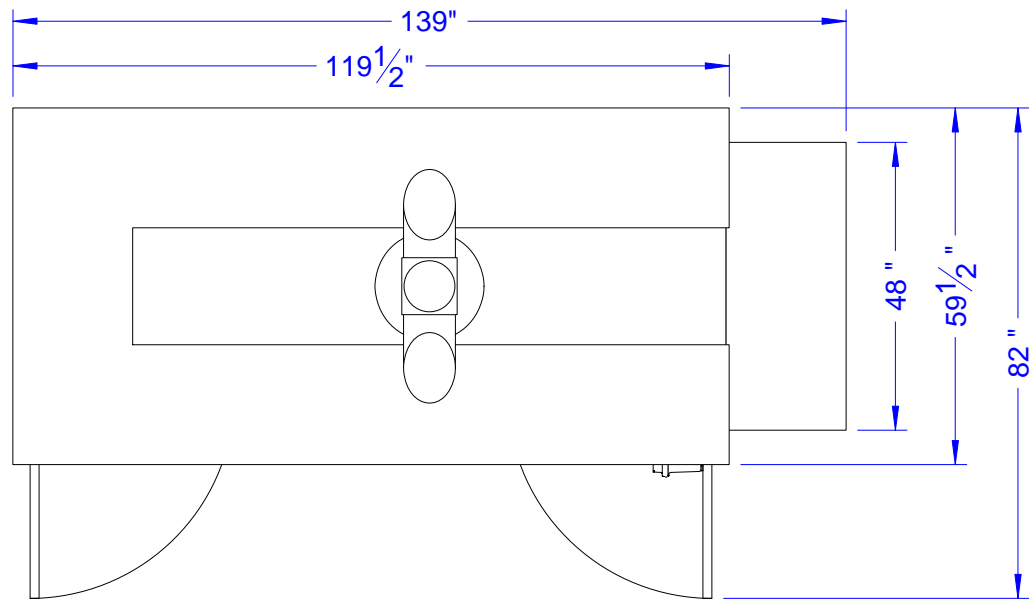
The following becomes a part of the original plans and specifications, taking precedence over the items that may conflict. The bidder shall note receipt and make acknowledgment of the addendum on his bid form, incorporating its provisions in his bid.

- Item No. 1: Reference Plan Sheets 32- 33. The attached drawings shall take the place of the drawings on Sheets 32-33 of the Plan Set.
- Item No. 2: SDR 7 -200 PSI HDPE waterline service piping is an approved alternate to schedule 40 PVC waterline service bid line items 1.16 & 1.17.

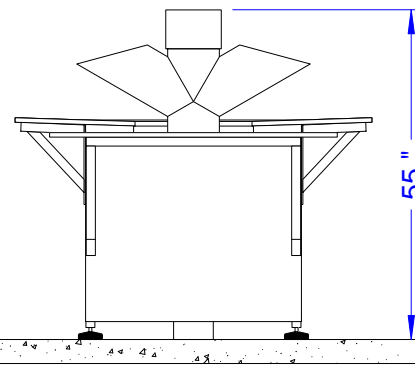
June 22, 2018



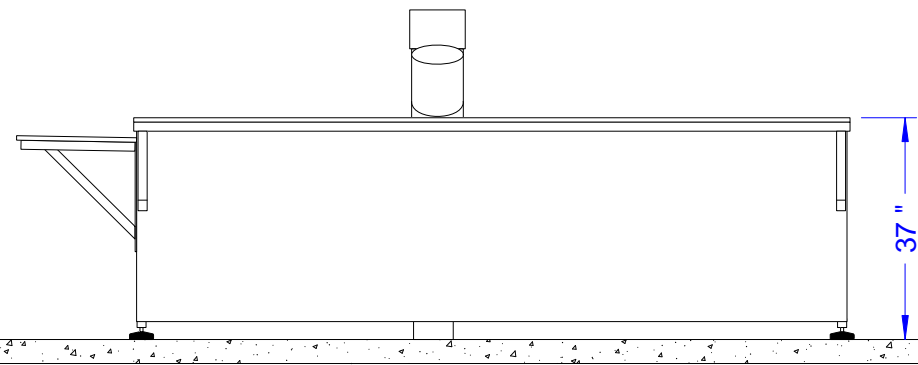
Tyler Ulrich
Engineer II



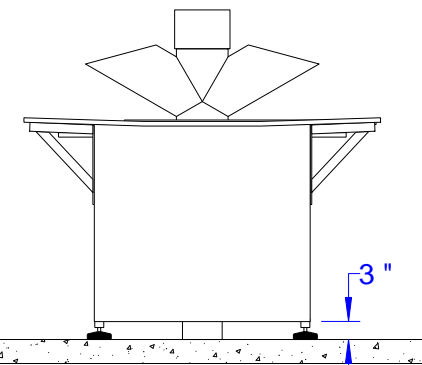
Front



Left



Rear

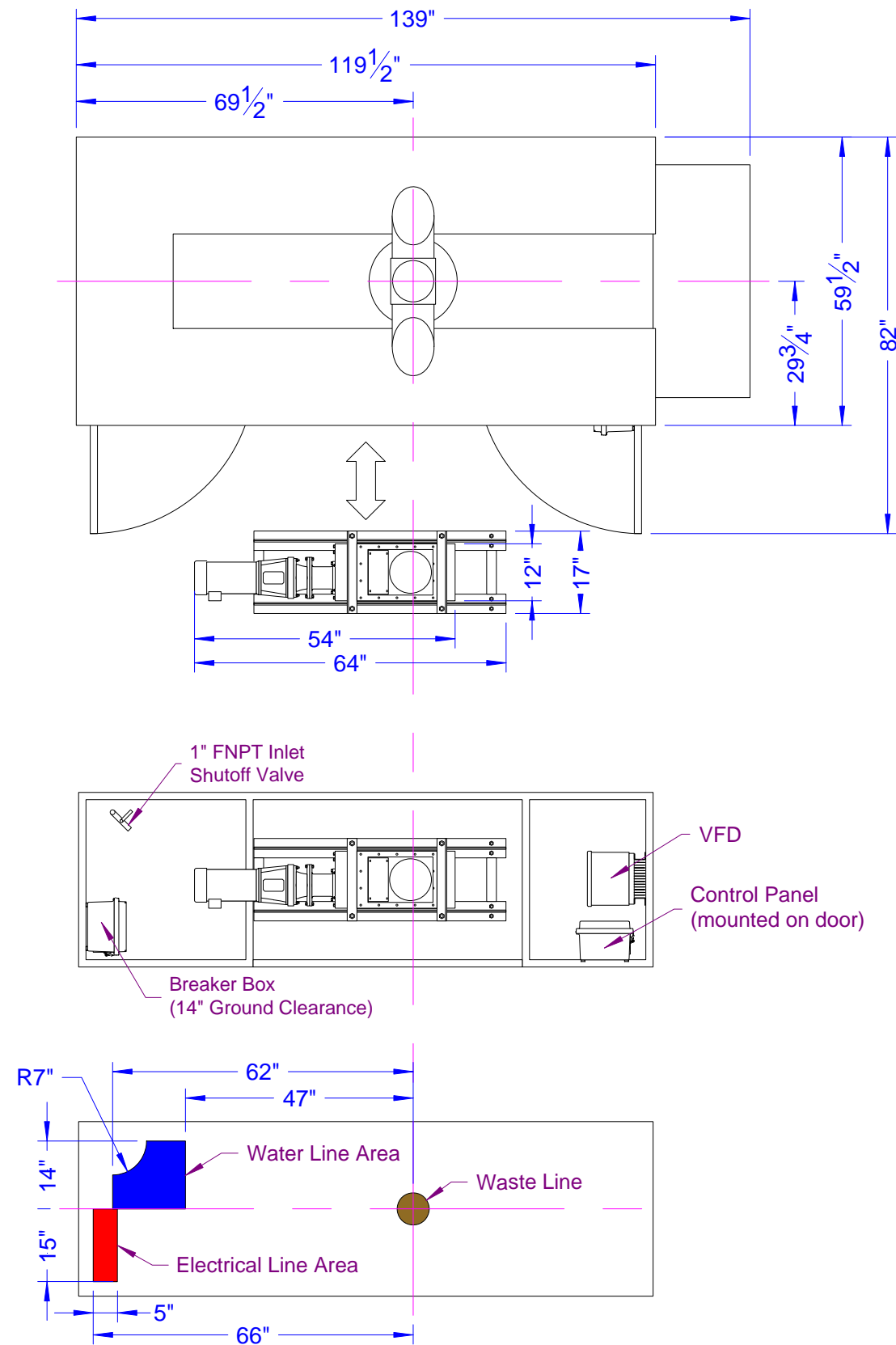


Right

Notes:

1. Exact elevations depend on leveling feet adjustments.
2. Cutting board surfaces are sloped to drain into the basin.

Barracuda III 60139 Exterior Views	Scale: 1:32	FS60139-B3-E	Rev: 1A
Quality Machine & Manufacturing	Eng: JDB	Ckd: PJW	06/18/18



Notes:

1. Sufficient space must be provided for maneuvering the FCS into position and subsequently removing the grinder (and its supporting frame) from the front, access-door side of the cabinet--as indicated to the left. Keep in mind that the doors open only as far as shown.
2. The customer is responsible for providing the equipment needed to unload and install the FCS.
3. All positioning dimensions are shown relative to the station's vertical centerline, which aligns with the centers of the grinder inlet and discharge ports.
4. All utility lines should project through a pre-installed concrete pad as indicated, to avoid conflicts with the grinder and the depicted cabinet members.
5. Center a 6" waste pipe (6.625" O.D.) beneath the station's intended position:
 - a. An adapter for sealing the grinder outlet to a 6" PVC pipe is normally provided. Please inform QM&M well in advance if you need a different type of waste discharge adapter.
 - b. The customer is responsible for providing and installing any needed trap or clean-out.
 - c. When installing the FCS, the waste line must be trimmed to protrude 3.0 ± 0.125 " above the bottoms of the cabinet's leveling feet.
 - d. We suggest that you install that pipe with a flanged end or coupler barely projecting above the concrete surface, so that you can later insert the necessary length of pipe between it and the grinder discharge.
6. Install an earth ground and a single- or three-phase, 30A (minimum), 240VAC service line through the pad in the indicated Electrical Line Area. In either case, that line must include a neutral but does not need a grounding conductor.
7. Install a water supply line through the pad in the indicated Water Line Area:
 - a. Said line should be capable of maintaining a 50 psig pressure and 10 gallon per minute flow (minimum), measured at the pad.
 - b. The 1" NPT inlet shutoff valve can be rotated as indicated to facilitate its connection to that line.
 - c. Position the water line far enough from the cabinet side to facilitate tightening its connector.

Barracuda III 60139 Site Requirements	Scale: 1:32	FS60139-B3-S	Rev: 1A
Quality Machine & Manufacturing	Eng: JDB	Ckd: PJW	06/18/18