

**ADDENDUM NO. 1**  
**August 1, 2019**

New Comfort Station  
Lewis and Clark Recreation Area  
Yankton County, South Dakota  
GFP Project No. LCYk20Pa

Bid Opening Date: August 6, 2019, 3:00 PM CT  
Department of Game, Fish and Parks  
2nd Floor, Foss Building  
523 East Capitol  
Pierre, South Dakota 57501-3182

Owner: State of South Dakota  
Department of Game, Fish and Parks

Scope of this Addendum:

The following becomes a part of the original plans and specifications, taking precedence over the items that may conflict. The bidder shall note receipt and make acknowledgment of the addendum on his bid form, incorporating its provisions in his bid.

**Item No. 1:** Approved Equals

Specified

Hager 1279/BB1199  
Hager 30S/36N/121L  
Hager 254W  
Ives 8x34

Equal

Mckinney T2714/T4A3386  
Burns 54/5410/100  
Ives WS20  
Burns KP 8x34

**Item No. 2:** Specification Clarifications

- Mirrors with shelves are not needed
- Shower curtain rod to be included in accessories specification as Bradley Model 9538 60"
- All restroom signs are to be unisex

**Item No. 3:** Change in the size of the Exhaust Outlet Louver. Increase size to a **32"x22"** Exhaust Outlet Louver. See pg. A1 and M2 of the Plan Sheets.

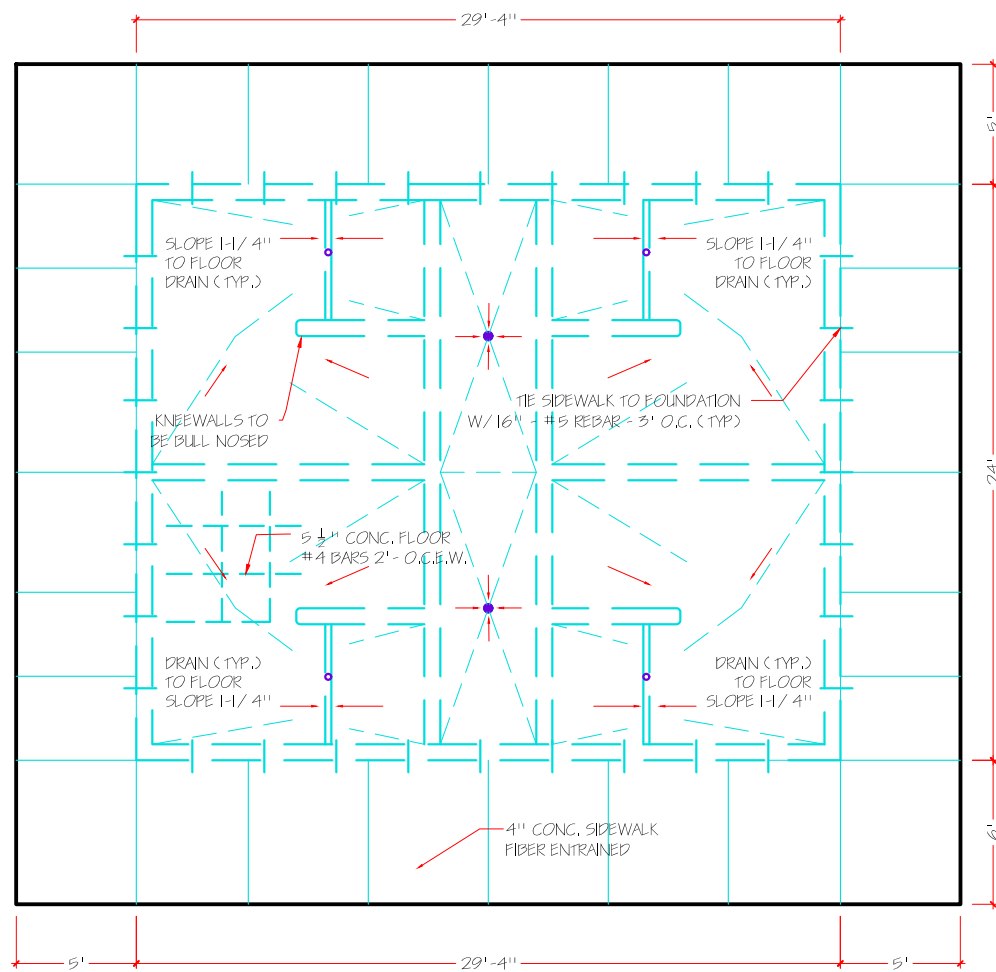
**Item No. 4:** Increase COOK 135-SQI-B from ½ HP to **1 ½ HP** Motor. See Pg. M2 of the Plan Sheets.

**Item No. 5:** Plan Sheet Clarification. Concrete slab thickness to be 5 ½" and reinforced with #4 bars at 2' on center each way. Please see update plan sheet for reference.

August 1, 2019



James Gilkerson  
Engineer I



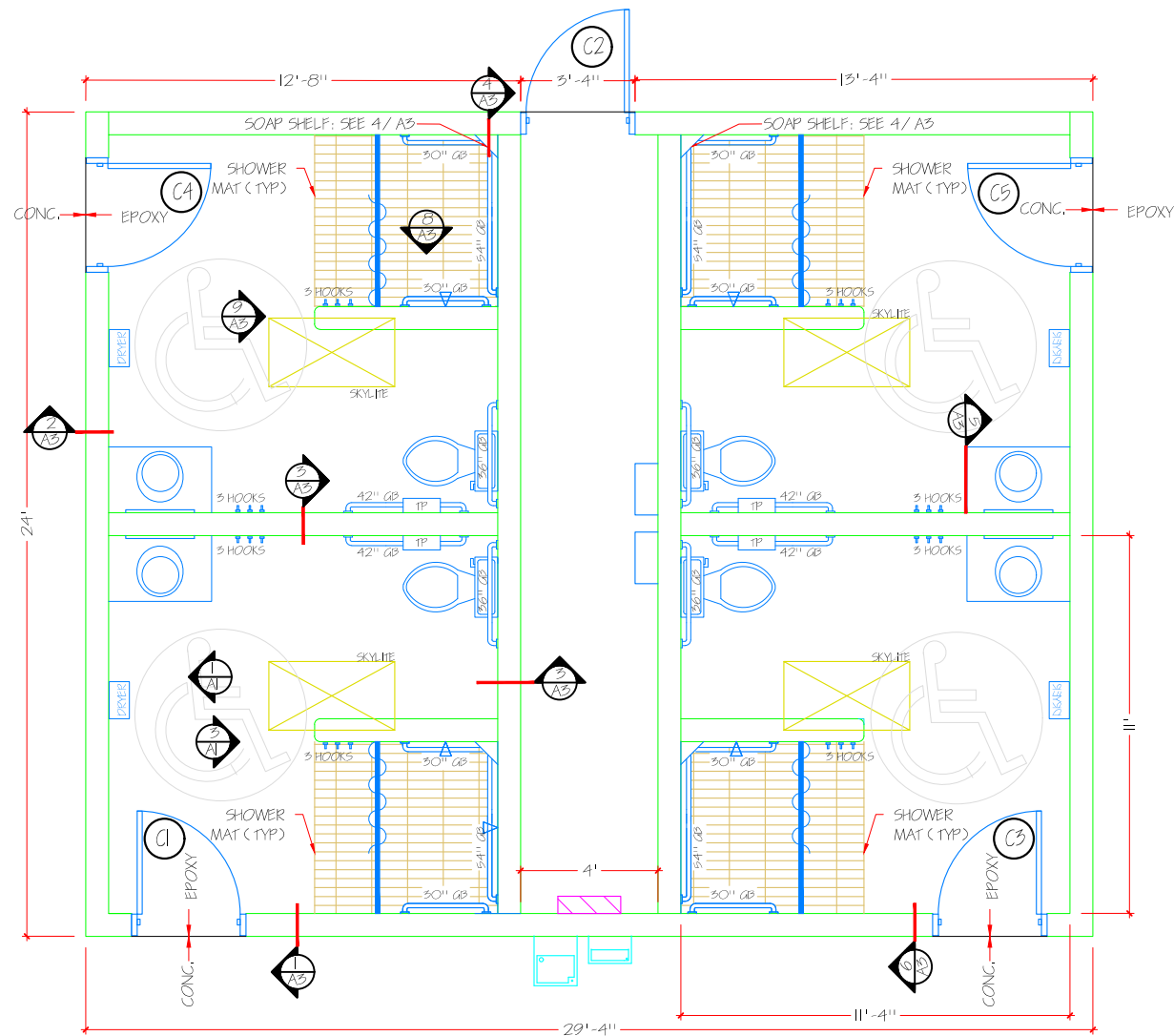
**CONCRETE PLAN**

SCALE: 1/8" = 1'

NOTE:

SLOPE SIDEWALKS 1/8" / FT. AWAY FROM BUILDING  
 GIVEN DIMENSIONS ARE MODULAR, SPECIFIED BLOCK ARE FACED  
 AND MEASURE SLIGHTLY SMALLER, COORDINATE SLAB SIZE WITH  
 MASON

SEE M & E SHEETS FOR SERVICE PENETRATIONS

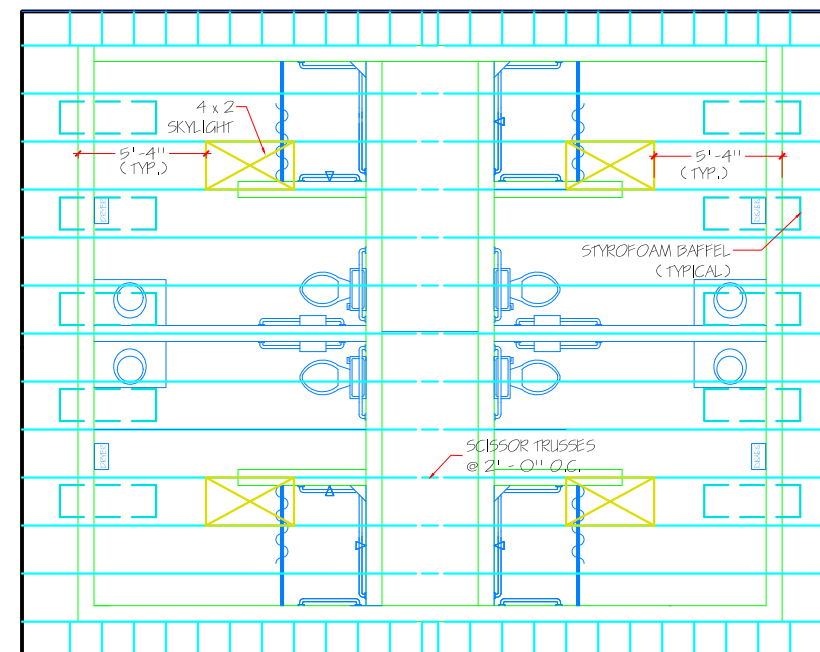


**FLOOR PLAN**

SCALE: 3/16" = 1'

NOTE:

DIMENSIONS GIVEN ARE MODULAR BLOCK, THE BURNISHED BLOCK  
 DIMENSIONS ARE SLIGHTLY SMALLER.



**ROOF PLAN**

SCALE: 1/8" = 1'

**DOOR SCHEDULE**

DOOR LETTER	DOOR DATA										FRAME DATA					
	SIZE			MATERIAL	TYPE	HAND	FINISH	HARDWARE GROUP	LABEL	REMARKS	MATERIAL	TYPE	FINISH	GLAZING	LABEL	DETAIL NO.
	WIDTH	HEIGHT	THK.													
C1	5'-0"	7'-0"	1-5/4"	HM	FLUSH	LH	2 COATS ENAMEL	C	NA	10"x24" LOUVER W/ INSECT SCREEN	HM	NA	2 COATS ENAMEL		NA	
C2	5'-0"	7'-0"	1-3/4"	HM	FLUSH	LH	2 COATS ENAMEL	C	NA	10"x24" LOUVER W/ INSECT SCREEN	HM	NA	2 COATS ENAMEL		NA	
C3	5'-0"	7'-0"	1-3/4"	HM	FLUSH	RH	2 COATS ENAMEL	C	NA	10"x24" LOUVER W/ INSECT SCREEN	HM	NA	2 COATS ENAMEL		NA	
C4	5'-0"	7'-0"	1-3/4"	HM	FLUSH	LH	2 COATS ENAMEL	C	NA	10"x24" LOUVER W/ INSECT SCREEN	HM	NA	2 COATS ENAMEL		NA	
C5	5'-0"	7'-0"	1-3/4"	HM	FLUSH	RH	2 COATS ENAMEL	C	NA	10"x24" LOUVER W/ INSECT SCREEN	HM	NA	2 COATS ENAMEL		NA	

Division of Administration  
 Foss Building  
 523 E. Capitol Ave.  
 Pierre, South Dakota 57501-3182  
 Phone: (605) 773 - 6082  
 Department of Game, Fish & Parks  
 SOUTH DAKOTA  
 PROJECT NUMBER: 5/122/2019  
 DRAWN BY: LCK201a  
 CHECKED BY: JG  
 DATE: 5/12/2019  
 PROJECT: COMFORT STATION  
 LEWIS AND CLARK RA  
 YANKTON COUNTY, SOUTH DAKOTA  
 PAGE: A2 OF 3