

Statewide Combined Deer Harvest

There were 52,683 resident deer licenses (plus unlimited licenses) available in 2022 and 106,265 were issued. Nonresidents had 3,246 licenses (plus unlimited licenses) available and 9,687 were issued. Statewide, there were a total of 115,952 licenses sold that represented a total of 133,182 tags, an increase in 850 licenses and 479 tags from 2021. A total of 71,516 individual hunters were issued deer licenses in 2022, down from 71,596 in 2021.

All hunters that listed a valid email address were surveyed using Survey123 Software. Hunters who did not supply a valid email address were not surveyed. Response rates ranged from 31% for Youth Antlerless Deer to 77% for Waubay Refuge Deer.

The projected statewide deer harvest was 55,379, a slight increase of about 200 from 2021. This estimate included 28,630 whitetail bucks, 19,934 whitetail does, 5,435 mule bucks and 1,381 mule does. Increases in white-tailed doe and mule doe harvest accounted for the overall increase. Mule deer made up approximately 12% of the total harvest.

The 2022 overall statewide harvest success remained at 42% from 2021. Harvest success ranged from 26% for Archery to 69% for West River Special Buck.

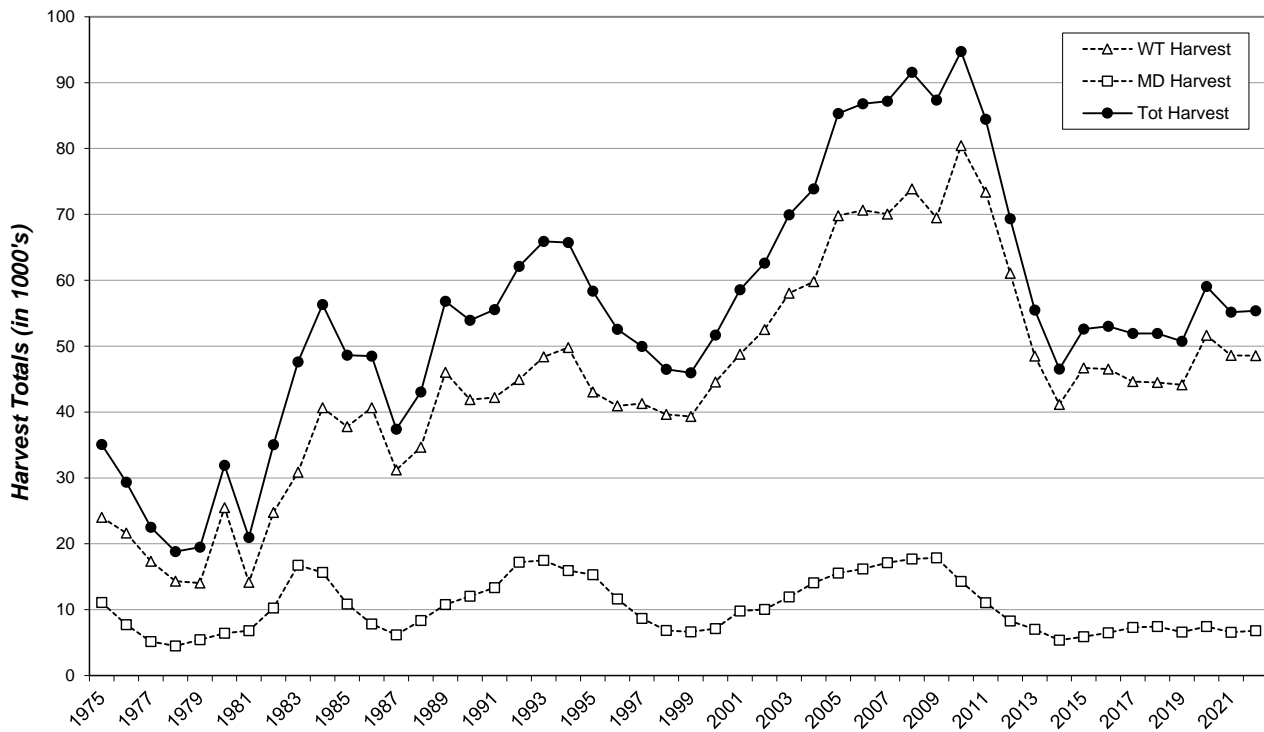
The total statewide estimate of 632,196 recreation days of deer hunting in 2022 results in an average of 5.45 days per hunter. Average hunter satisfaction values (1=very dissatisfied to 7=very satisfied) ranged from 4.23 for Black Hills Landowner Own Land Deer to 5.82 for Apprentice Antlerless Deer.

2022 Statewide Deer Harvest Projection Summary

last revised: 27 April 2023

SOUTH DAKOTA Harvest Statistic	Season	Archery	Apprentice Antlerless	Youth Antlerless	Mentored Youth Antlerless	Muzzleloader	Landowner Own Land Antlerless	West River	West River Landowner Own Land	West River Special Buck Unit	East River	East River Landowner Own Land	East River Special Buck Unit	Refuges			Black Hills	Black Hills Landowner Own Land	Custer State Park	Grand Totals
		Archery	Apprentice Antlerless	Youth Antlerless	Mentored Youth Antlerless	Muzzleloader	Landowner Own Land Antlerless	West River	West River Landowner Own Land	West River Special Buck Unit	East River	East River Landowner Own Land	East River Special Buck Unit	Sand Lake NWR	Waubay NWR	Lacreek NWR	Black Hills	Black Hills Landowner Own Land	Custer State Park	
Licenses/Tags																				
Resident Licenses																				
Available	Unlimited	Unlimited	Unlimited	Unlimited	Unlimited	Unlimited	21,223	Unlimited	1,000	26,240	Unlimited	500	105	20	20	3,500	Unlimited	75	52,683	
Sold	29,757	526	3,080	6,547	3,083	2,095	20,124	2,556	991	26,010	7,213	499	104	20	20	3,522	43	75	106,265	
Resident Tags																				
Available	Unlimited	Unlimited	Unlimited	Unlimited	Unlimited	Unlimited	31,793	Unlimited	1,000	27,440	Unlimited	500	105	20	20	3,500	Unlimited	75	64,453	
Sold	29,757	526	3,080	6,547	3,083	2,095	29,739	3,891	991	27,209	11,254	499	104	20	20	3,522	64	75	122,476	
Nonresident Licenses																				
Available	Unlimited	Unlimited	Unlimited	Unlimited	Unlimited	Unlimited	1,702	Unlimited	1,000	Leftovers	250	N/A	10	2	2	280	N/A	N/A	3,246	
Sold	5,463	1	368	176	104	57	1,820	75	976	173	169	N/A	10	2	2	291	N/A	N/A	9,687	
Nonresident Tags																				
Available	Unlimited	Unlimited	Unlimited	Unlimited	Unlimited	Unlimited	2,548	Unlimited	1,000	Leftovers	250	N/A	10	2	2	280	N/A	N/A	4,092	
Sold	5,463	1	368	176	104	57	2,762	109	976	174	211	N/A	10	2	2	291	N/A	N/A	10,706	
Total Licenses																				
Available	Unlimited	Unlimited	Unlimited	Unlimited	Unlimited	Unlimited	22,925	Unlimited	2,000	26,240	Unlimited	500	115	22	22	3,780	Unlimited	75	55,679	
Sold	35,220	527	3,448	6,723	3,187	2,152	21,944	2,631	1,967	26,183	7,382	499	114	22	22	3,813	43	75	115,952	
Total Tags																				
Available	Unlimited	Unlimited	Unlimited	Unlimited	Unlimited	Unlimited	34,341	Unlimited	2,000	27,440	Unlimited	500	115	22	22	3,780	Unlimited	75	68,295	
Sold	35,220	527	3,448	6,723	3,187	2,152	32,501	4,000	1,967	27,383	11,465	499	114	22	22	3,813	64	75	133,182	
Hunters																				
Available	Unlimited	Unlimited	Unlimited	Unlimited	Unlimited	Unlimited	34,341	Unlimited	2,000	27,440	Unlimited	500	115	22	22	3,780	Unlimited	75	68,295	
Sold	26,326	527	3,448	6,723	3,107	1,884	20,610	2,631	1,967	25,020	7,382	499	114	22	22	3,813	43	75	71,516	
Recreation																				
Average Days Hunted	12.19	4.10	4.08	3.88	5.03	3.48	3.43	3.95	3.65	3.91	4.53	5.05	2.63	2.47	3.56	5.02	4.14	3.30	5.45	
Total Days Hunted	320,908	2,162	14,083	26,095	15,638	6,555	70,791	10,382	7,187	102,388	33,473	2,519	300	54	78	19,155	178	248	632,196	
Mean Satisfaction Score	4.94	5.82	5.38	5.59	4.73	5.04	4.69	4.90	5.45	4.87	5.10	4.98	4.54	4.64	5.23	4.96	4.23	5.45		
Harvest																				
White-tailed Deer																				
Bucks	5,279	29	151	320	275	36	6,345	634	885	9,410	3,121	288	33	9	11	1,772	17	14	28,630	
Does	2,472	210	1,282	2,525	760	684	4,953	346	18	4,779	1,414	12	11	6	0	432	5	27	19,934	
Total	7,751	238	1,434	2,845	1,035	720	11,298	980	903	14,189	4,535	300	44	14	11	2,204	22	42	48,563	
Mule Deer																				
Bucks	1,095	4	4	5	83	0	3,021	428	443	208	51	18	0	0	0	72	3	0	5,435	
Does	178	21	235	301	8	0	399	161	8	9	50	2	0	0	0	2	8	0	1,381	
Total	1,273	25	239	306	90	0	3,421	589	452	217	102	20	0	0	0	74	10	0	6,816	
Total Deer Harvest																				
Bucks	6,373	32	155	325	358	36	9,367	1,062	1,328	9,618	3,172	306	33	9	11	1,844	20	14	34,065	
Does	2,650	231	1,517	2,825	767	684	5,352	506	26	4,788	1,464	13	11	6	0	433	13	27	21,315	
Total	9,023	263	1,672	3,150	1,125	720	14,719	1,568	1,355	14,406	4,637	319	44	14	11	2,277	33	42	55,379	
Success																				
	26%	50%	48%	47%	35%	33%	45%	39%	69%	53%	40%	64%	39%	66%	50%	60%	51%	56%	42%	

South Dakota Combined Deer Harvest 1975-2022



South Dakota Combined Deer Licensing 1975-2022

