



State Park Volunteer Program

Volunteer with Us



- Each year, hundreds of people donate their time and talents to volunteer within our state park system.



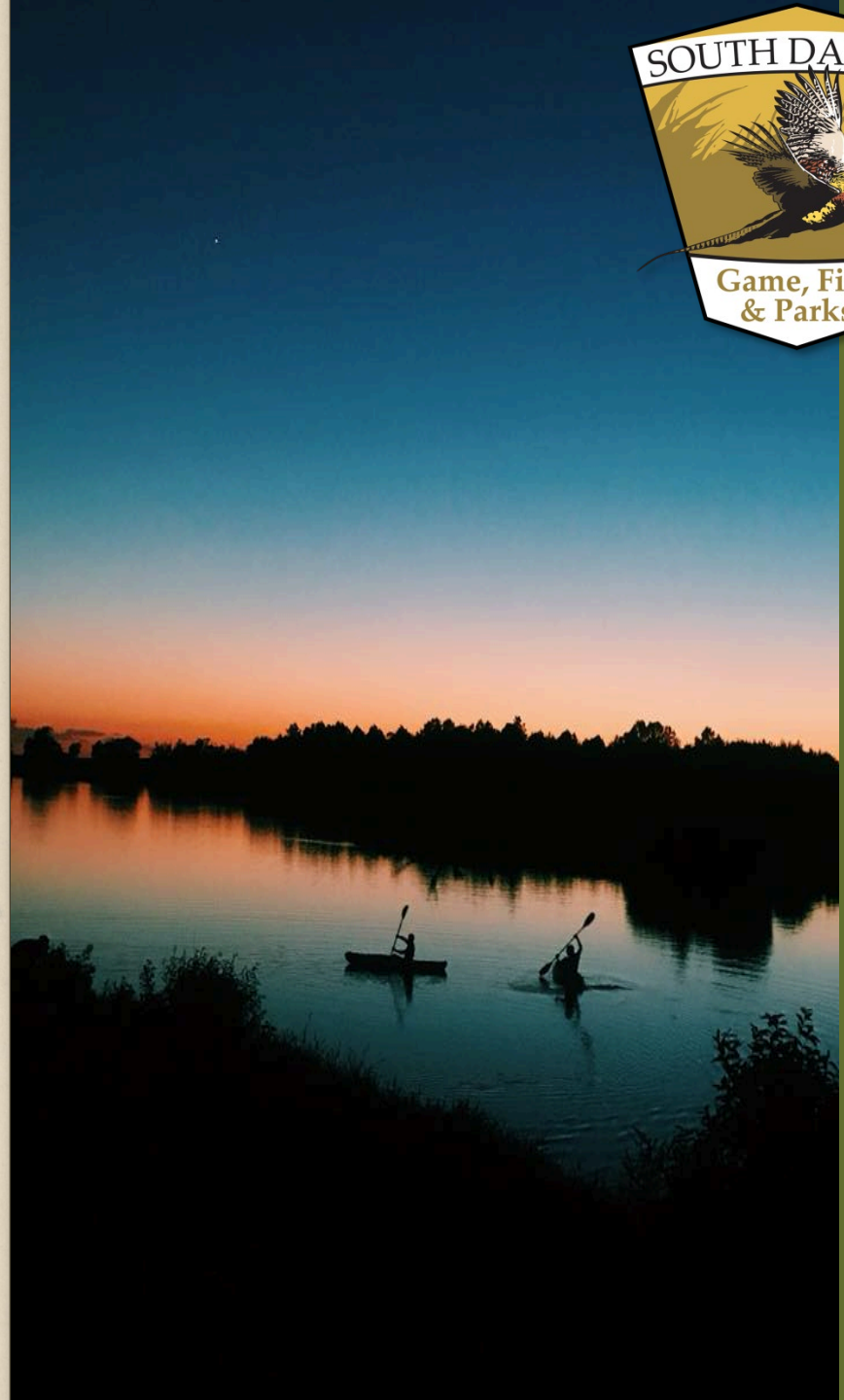
Information

- 443 total
 - 205 commuters
 - 118 new
 - 325 returning
- The average stay is from May to September.
- On-site volunteers are provided with a campsite during their service in exchange for 24 hours of service per person per week.
- Volunteer campsites: Full hook-up; electricity, water and sewer.



Park Specific

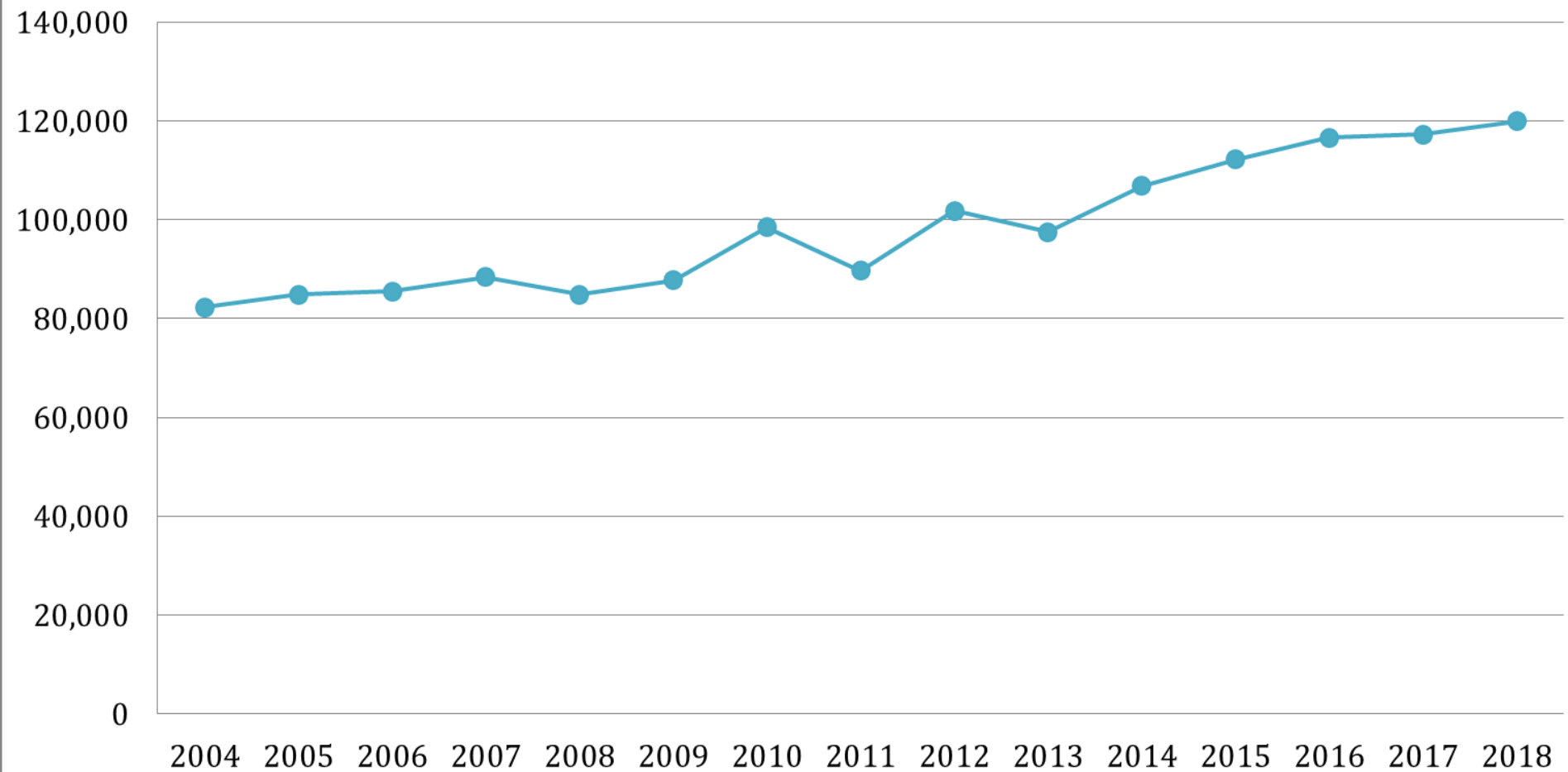
- Good Earth State Park
 - Only have commuter volunteers
 - 56 total
- Fort Sisseton State Park
 - 48 total
 - 44 commuters
- Adams Homestead
 - 22 total
 - 19 commuters
- Custer State Park
 - 106 total
 - 13 commuters



Hours Contributed



Hours Contributed

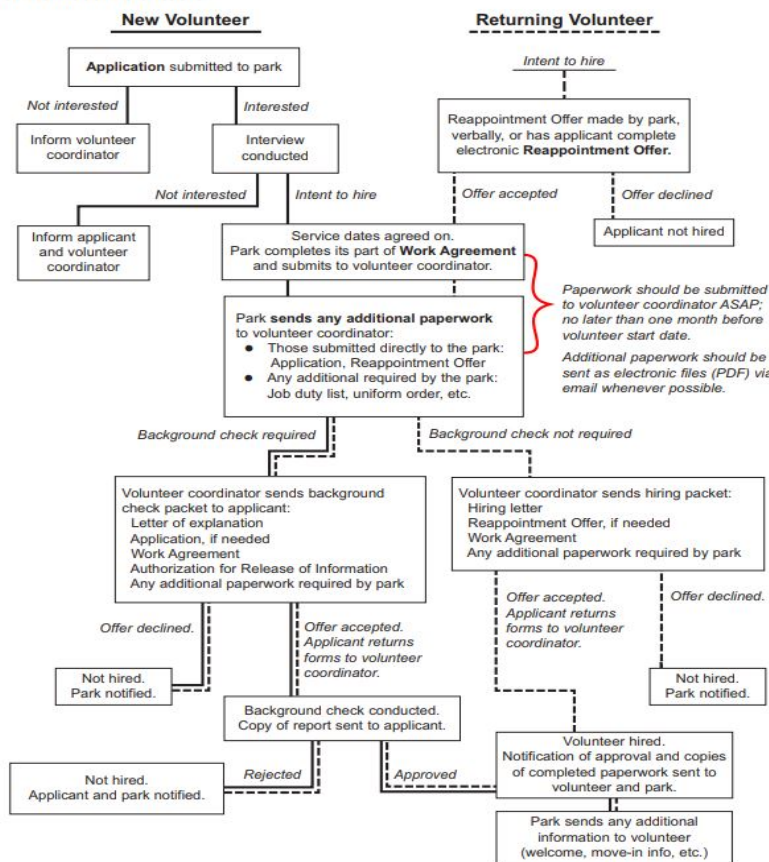


How it works

- <https://gfp.sd.gov/volunteer/>

Volunteer application and hiring process for individual volunteers

effective Jan. 1, 2012
?s: Contact volunteer coordinator



Recognition Items

- 24 hours - the current years Park Entrance License
- 200 hours – collapsible cooler
- 750 hours - volunteer hand towel
- 3,000 and over – we have choice items for the volunteer to pick from.
 - Sweatshirt
 - Apron
 - Walking Stick

