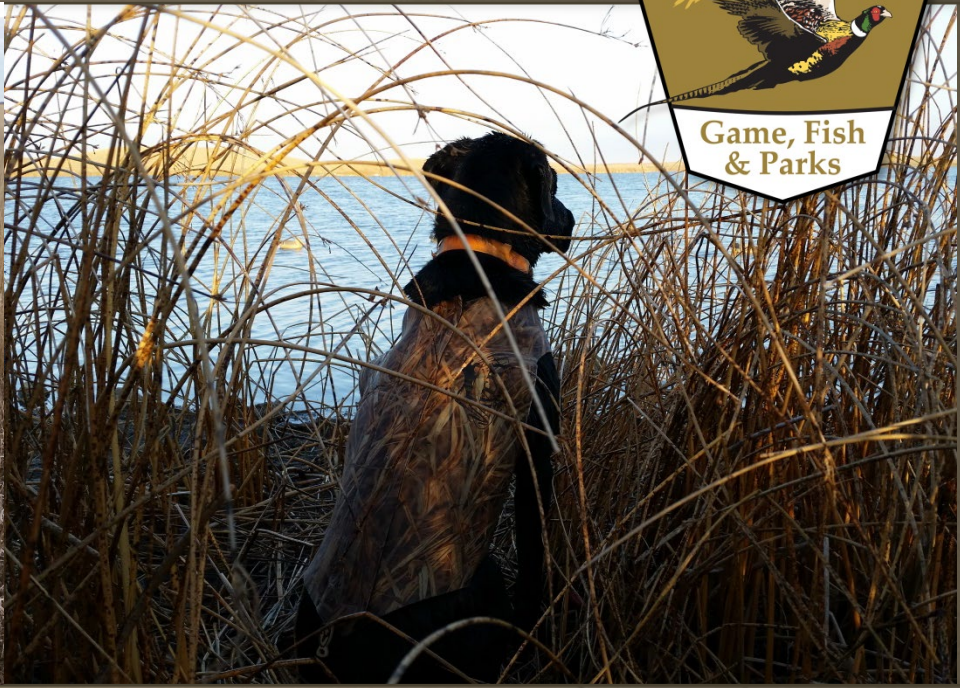




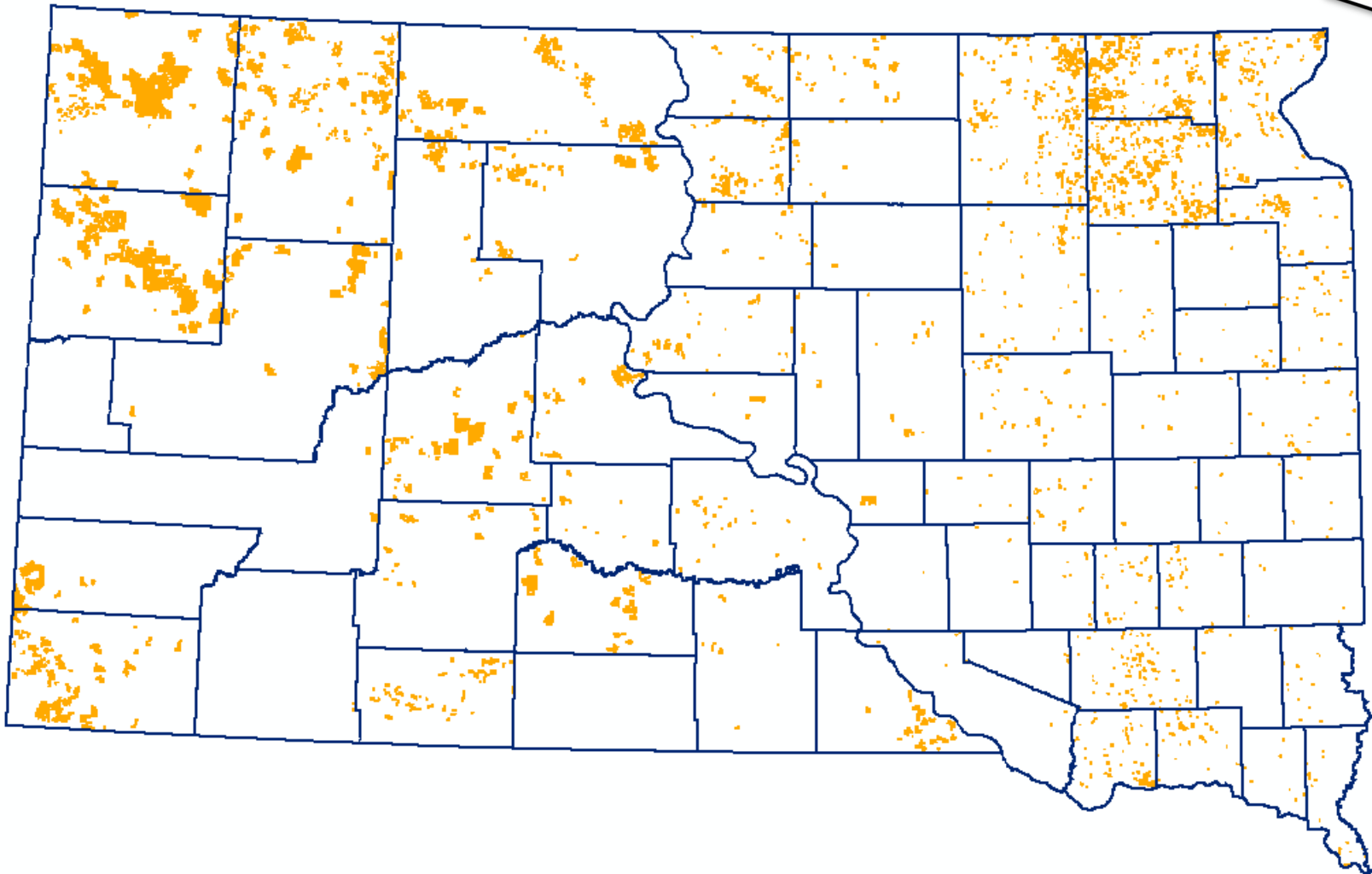
SOUTH DAKOTA GAME, FISH and PARKS

Mark Norton, Hunting Access and Farm Bill Coordinator



Hunting Access Program Update

2018 Private Land Leased for Public Hunting Access



Increase quality private land hunting access and enroll 200,000 acres by 2020



SD Private Land Open to Public Hunting Access

Program	2016	2017	2018	2019	2020	Change Since 2016
CREP	80,906	80,906	80,783			-123
WIA	1,221,303	1,239,580	1,285,645			64,342
CHAP	19,731	22,522	23,031			3,300
LOWA	31,434	34,286	34,126			2,692
EHAA	27,193	26,890	13,110			-14,083
Total	1,380,567	1,406,201	1,436,855			56,288



Access Program Delivery

- SDCL 20-9-12 to 18 provides limited liability for landowners who lease land to the state for outdoor recreational purposes.
- Primarily delivered by 34 GFP Wildlife Conservation Officers and 3 Resource Biologists
 - Sign land up
 - Determine payments
 - Renew WIA contracts
 - All 79 COs check hunters and enforce laws on public hunting access program lands
- Also delivered by 12 Pheasant's Forever Partnership Farm Bill Biologists
 - Signed up every CREP contract between 2010-2013
 - Sign WIA contracts with new CRP participants and Community Based Habitat and Access Program incentives
 - GFP staff maintain contracts afterwards
- One Hunting Access Program Coordinator
 - Manages programs and contracts, pays cooperators, works with GIS & Communications staff to create public hunting atlas, trains and assists all who deliver the programs



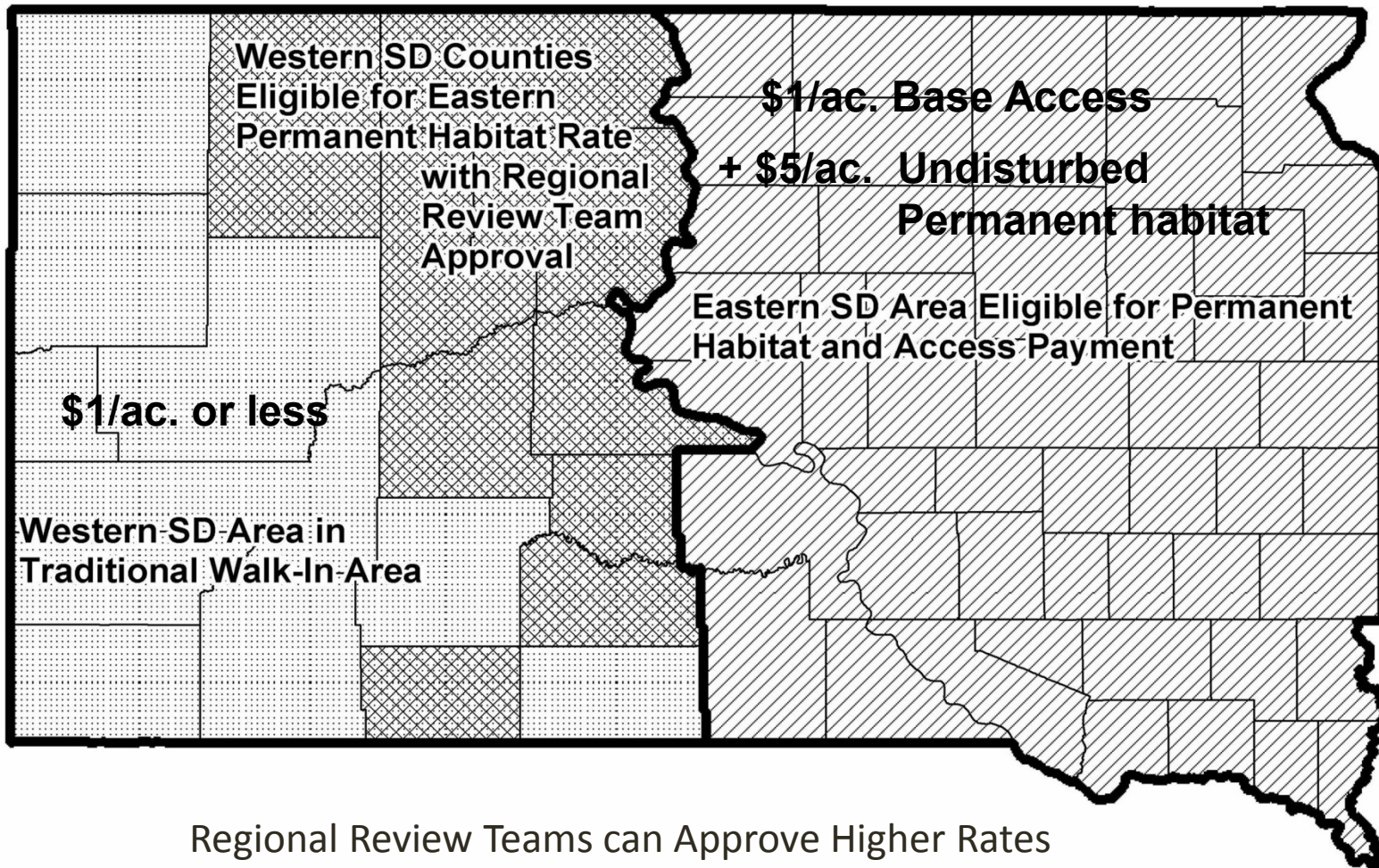
Access Program Delivery

- What qualifies a piece a land for the Walk-In Area Program?
 - Private land that provides a justifiable hunting opportunity determined by the local staff that evaluate the property at time of sign up and Conservation Officers that monitor use by hunters each hunting season
 - Publicly accessible from road or adjacent publicly accessible land
- Programs are reviewed
 - Annually by the Access Committee
 - Conservation Officers
 - Habitat biologists and managers
 - Regional Supervisors
 - GIS staff
 - Every 5 years by Hunter Use of Walk-In Area Survey

WIA Annual Payment Guidelines

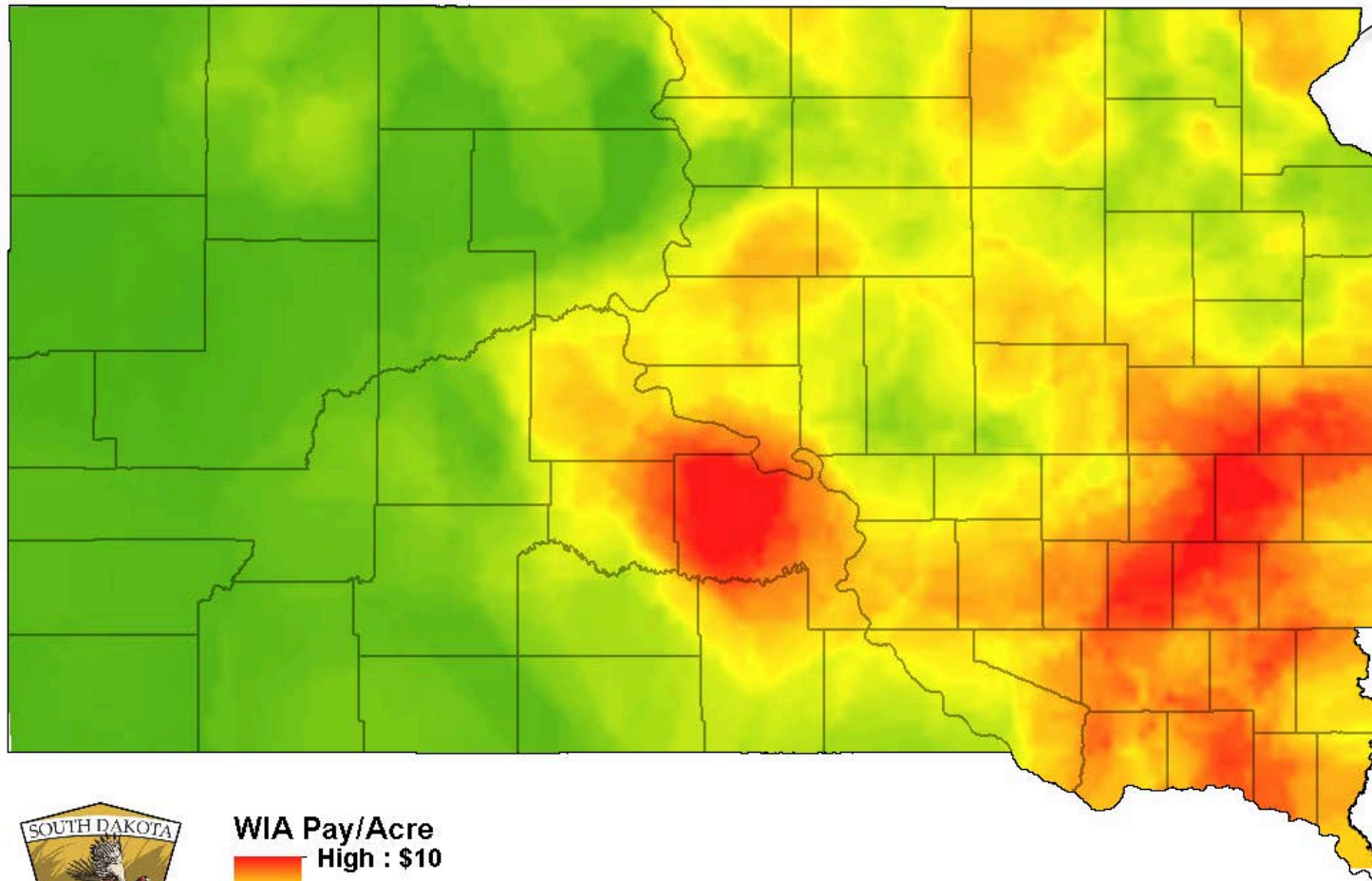


Walk-In Area Payment Types





2018 Walk-In Area Program Annual Payment Range

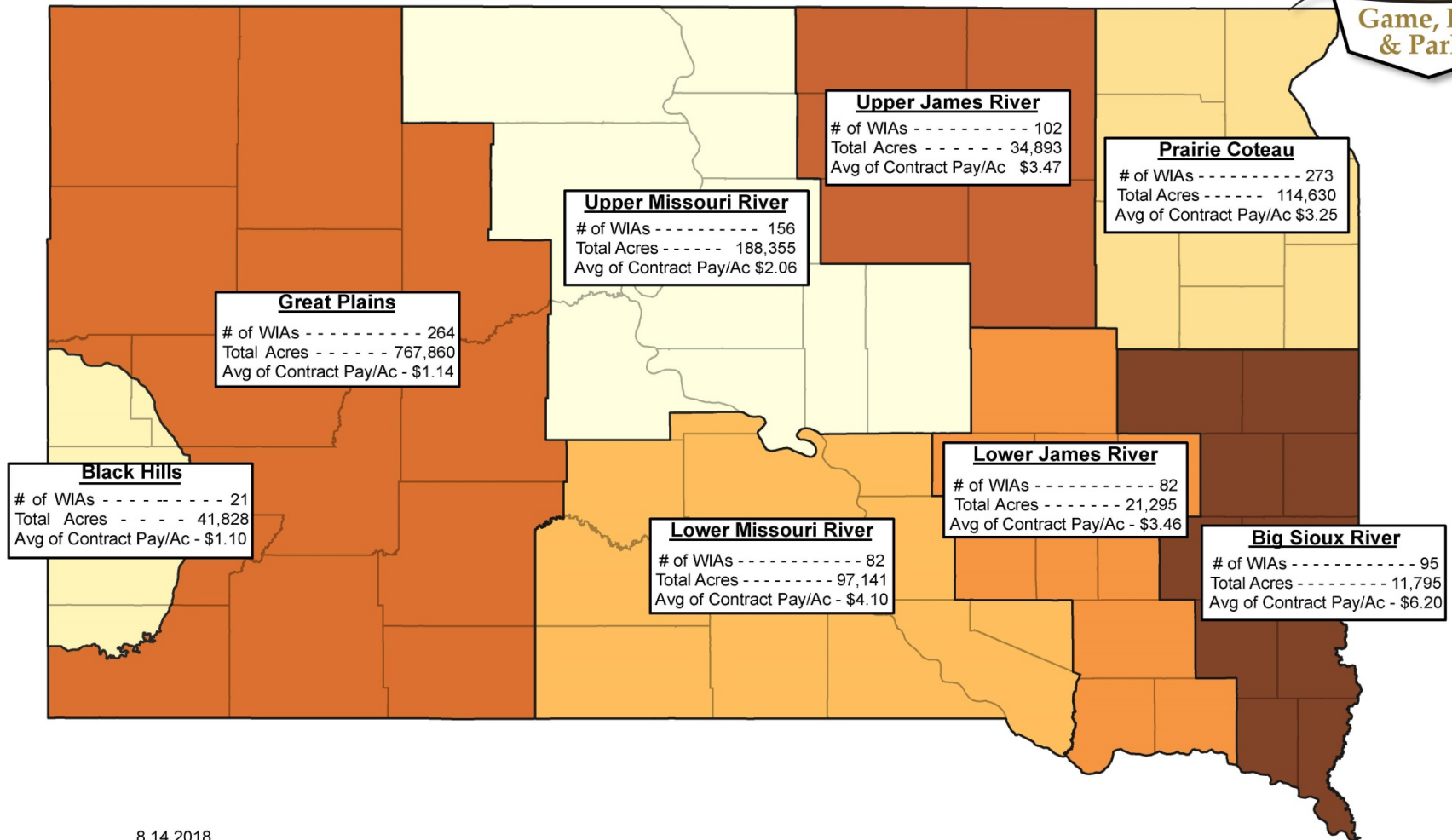


WIA Pay/Acre
High : \$10
Low : \$0.53

0 30 60 90 120 Miles



2018 Walk-In Area Summary



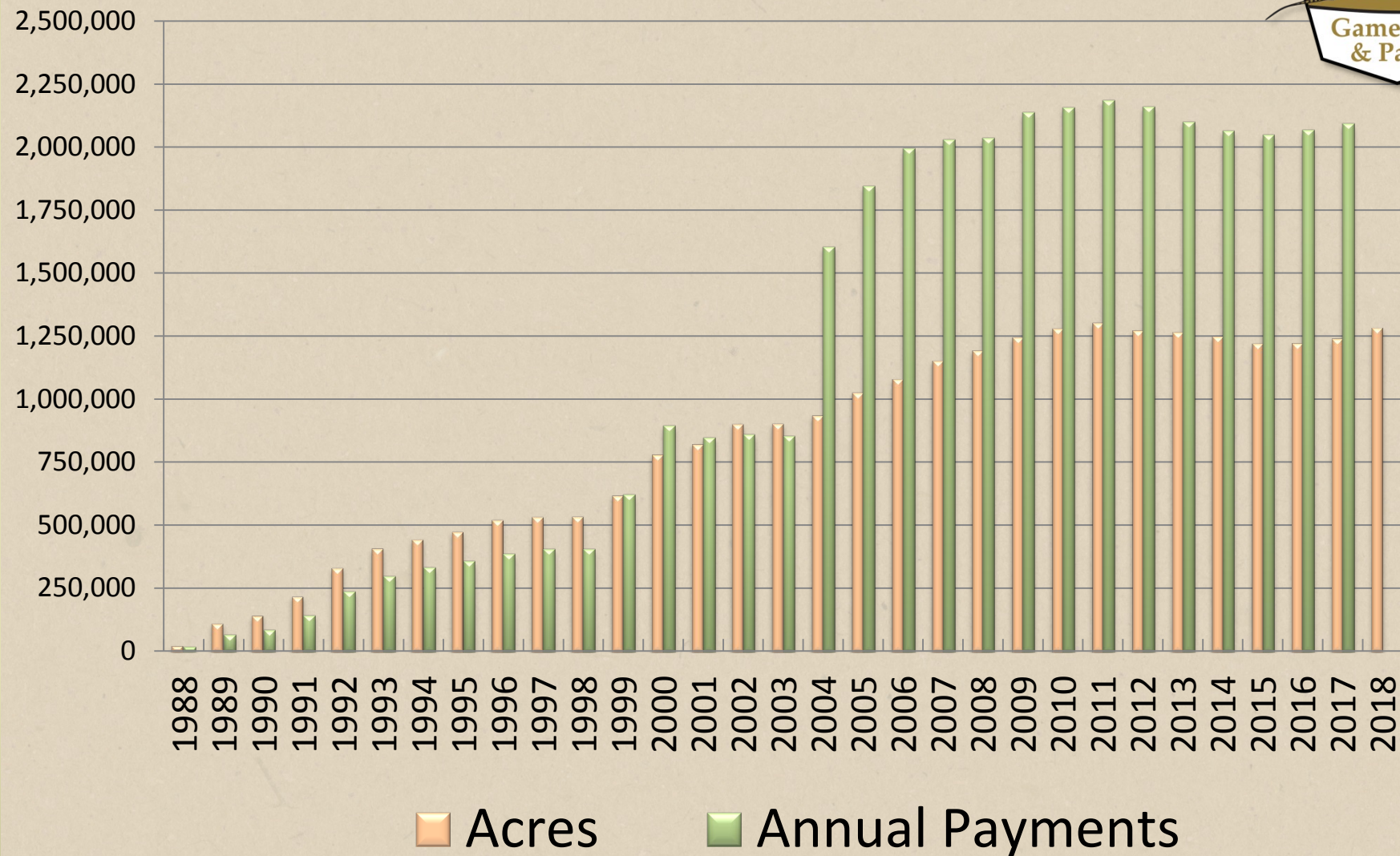
2018 Walk-In Area Stats



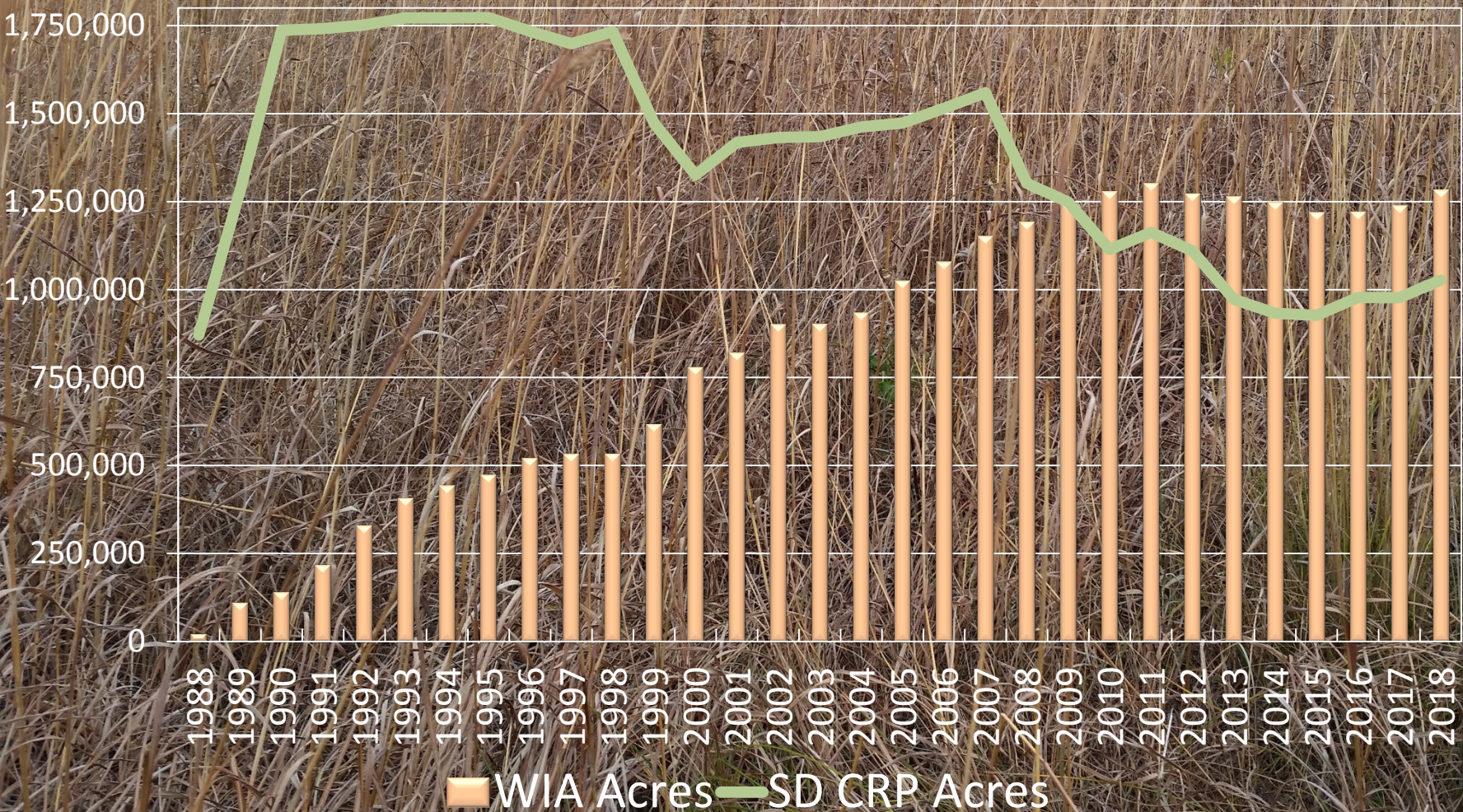
- 1,285,645 acres (↑44,000 from 2017)
- 1,474 Cooperators (↑16)
- Max Annual Payment Cost \$2,329,417 (↑\$192,000)
- 75% Federal Aid in Wildlife Restoration (1937 Pittman Robertson Act)
- 25% Hunting License Sales



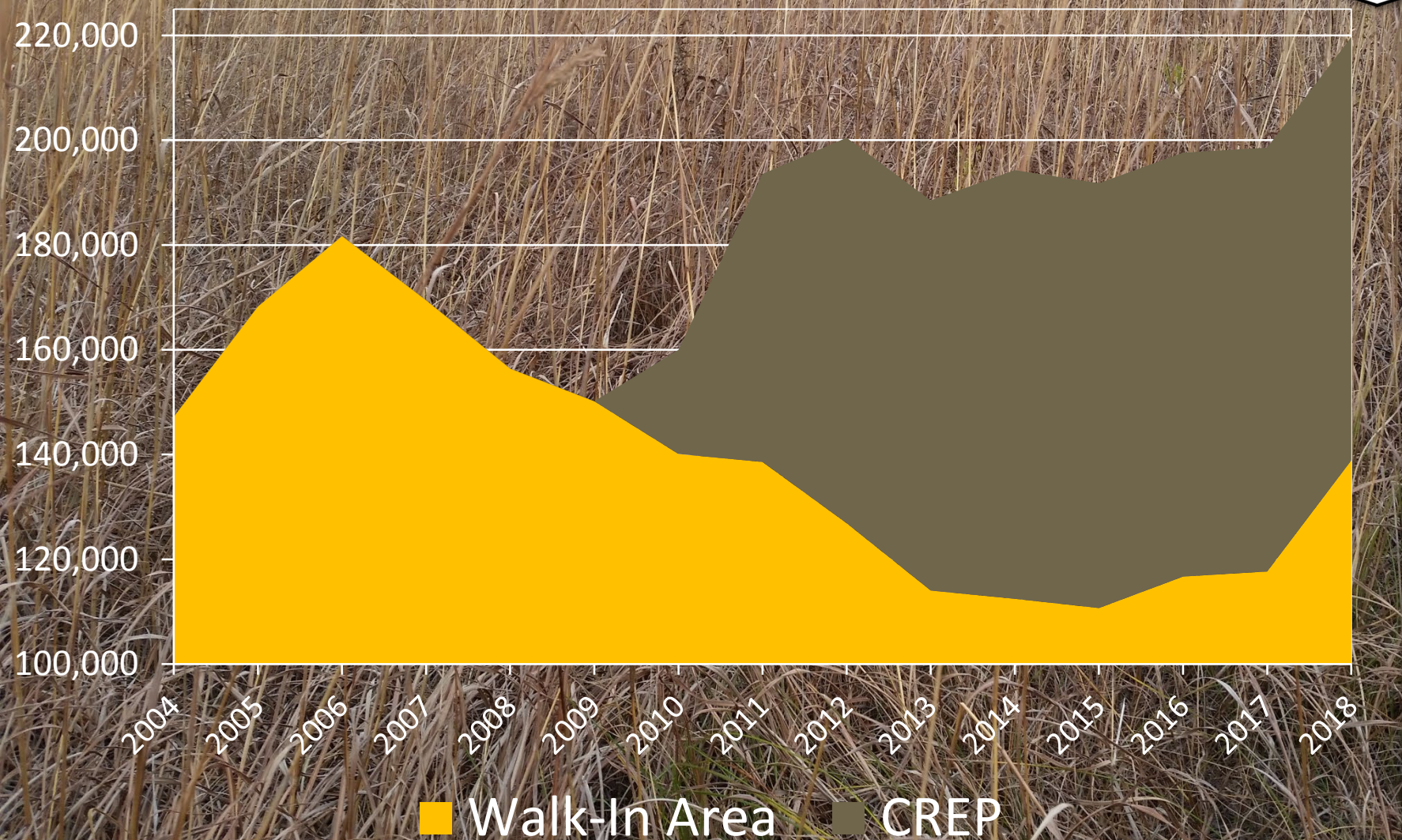
Walk-In Areas 1988-2018



Walk-In Areas & CRP 1988-2018



Undisturbed Habitat Acres Leased for Public Hunting Access



WIA Conservation Program Signing Bonus via VPA-HIP

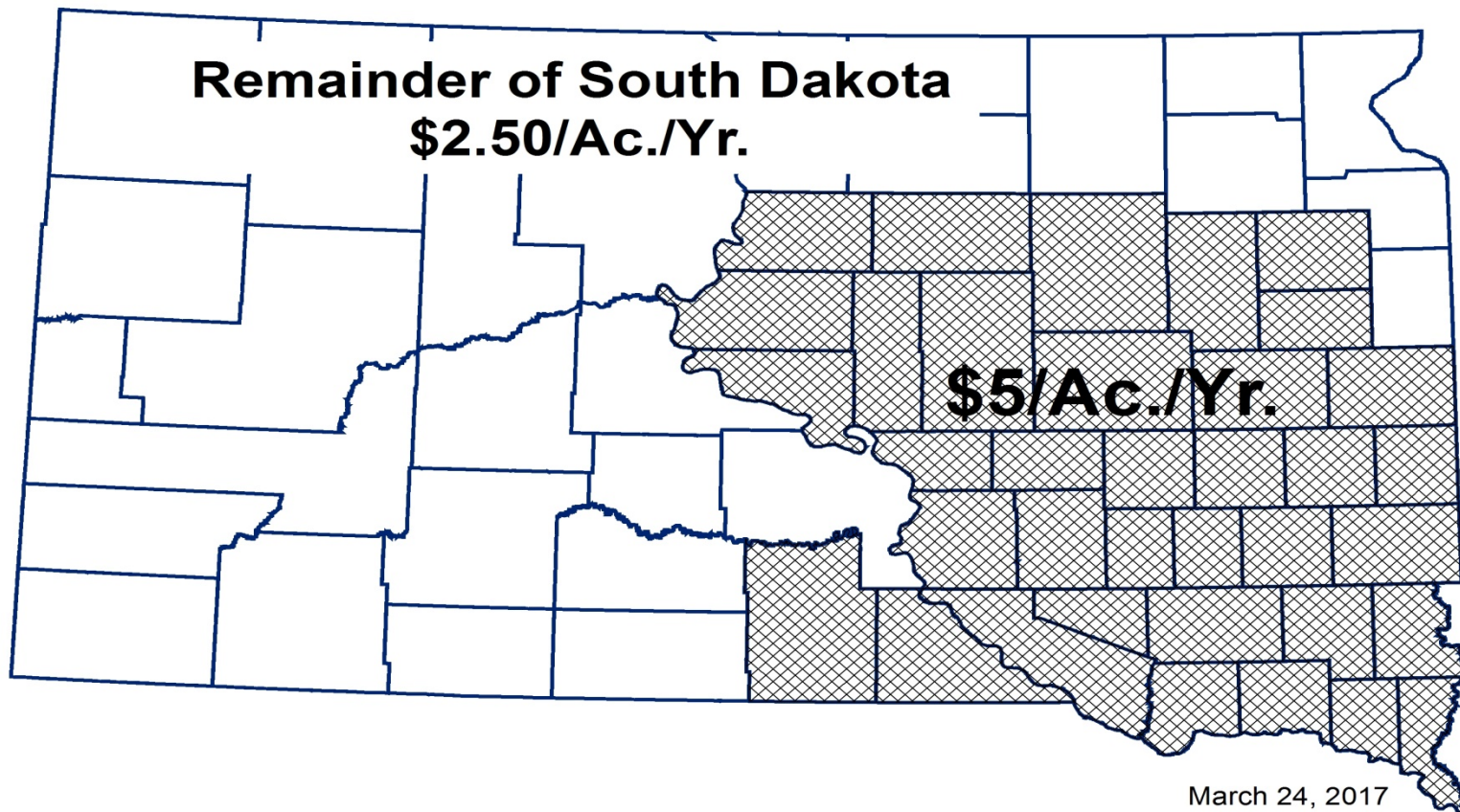


Year	Cooperators	Habitat Acres	Signing Bonus Paid	Average Years of Public Hunting Access Secured
2011	154	26,667	\$621,406	8
2012	103	16,354	\$407,462	8
2015	39	5,702	\$128,835	9
2016	98	11,343	\$265,579	8
2017	86	12,214	\$323,757	9
2018	104	24,605	\$684,747	9
Totals	584	96,885	\$2,431,786	

2018 WIA CPSB Rate Map



Walk-In Area Conservation Program Signing Bonus Rate Map



WIA Conservation Program Signing Bonus via VPA-HIP



- 2018 Stats
 - 45,414 total acres of private land opened to public hunting access for an average of 9 hunting seasons of those 39,214 were never before open to public hunting
 - 24,605 acres were CRP or WRP, of which 21,551 were never before open to public hunting



Aberdeen Pheasant Coalition



- \$25/ac signing bonus in Brown County to put CRP in WIA
- 1st contract signed in January 2016
- 21 contracts active in 2018
 - 26 WIA Sites
 - 3,876 acres of which 3,016 are CRP
 - All 10-15 year contracts
 - All new CRP plantings
- www.aberdeenpheasant.com





New CBHAPs in 2018

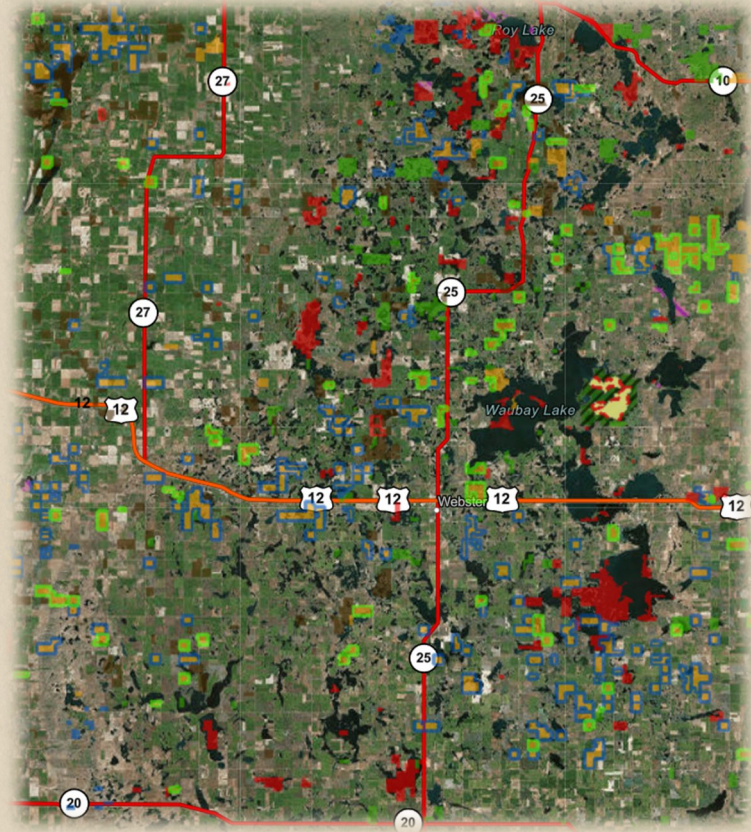


- Mitchell Area (\$35/ac)
 - 3 WIA Sites
 - 168 acres
- Brule/Lyman Counties
 - \$2.50/ac/yr.
 - 2 WIA Sites
 - 205 acres
- All 10-15 year contracts
- All new CRP plantings



CO-OP Walk-in Areas

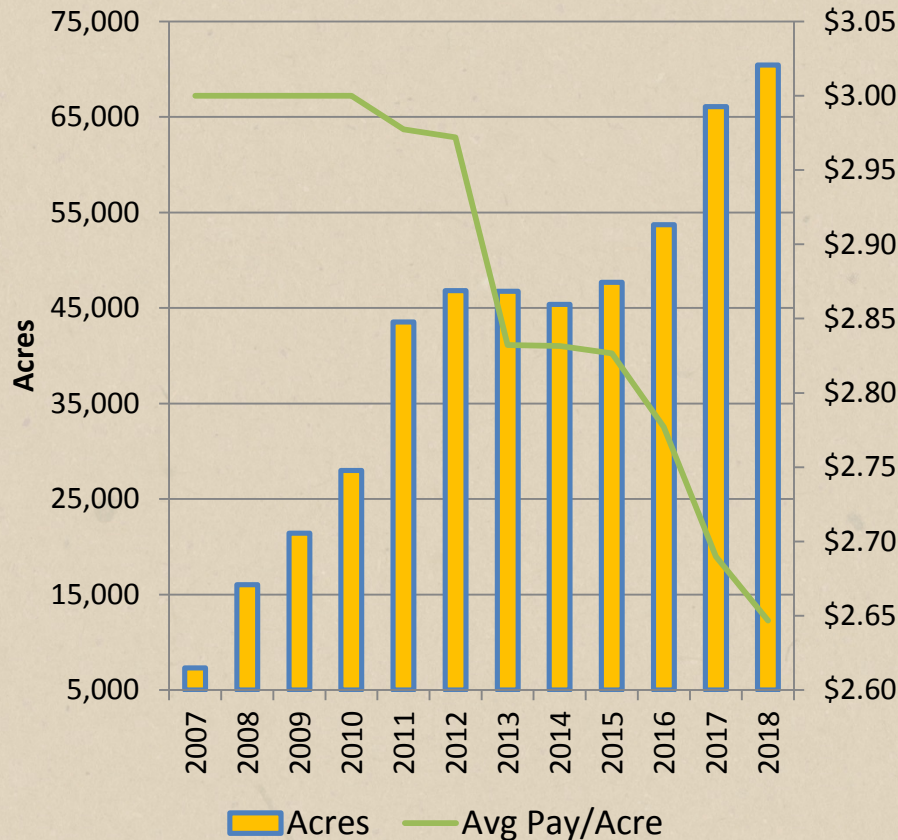
- Whole Farm units including cropland, CRP, wetlands, shelterbelts, etc.
- WIAs that allow driving on harvested cropland for waterfowl decoy placement and disabled hunter permit holders
- Annual Payment
 - \$3/acre if 20% or more of land is undisturbed habitat
 - \$2/acre if less than 20% of land is undisturbed habitat
- Signing Bonus to encourage multi-year contracts



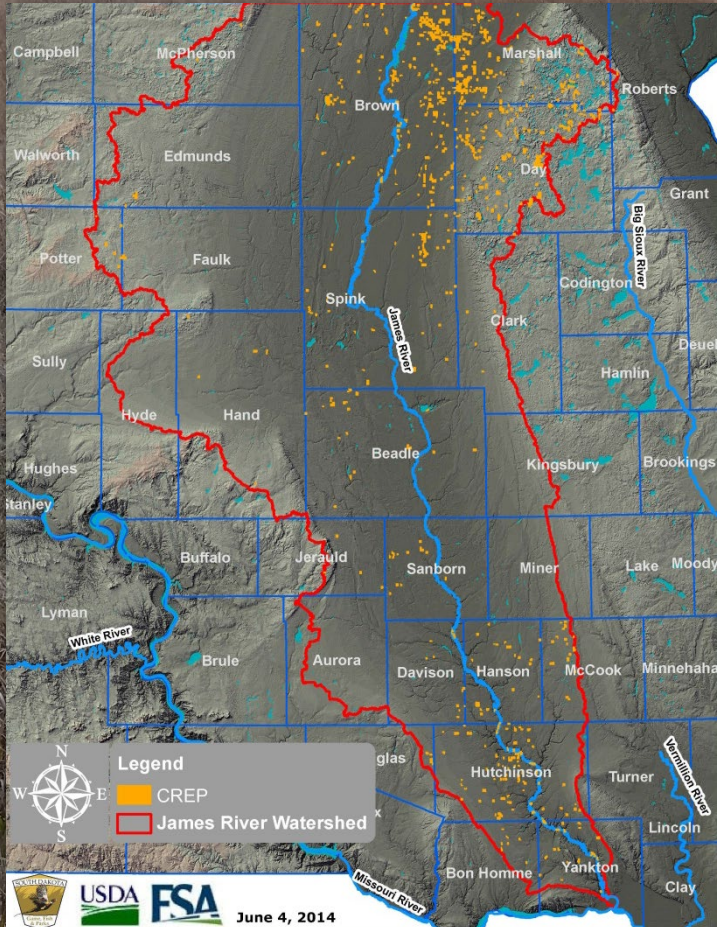


WIA Co-op Areas 2018

WIA Co-op Enrollment



James River Watershed CREP



- 80,783 acres
 - 27,928 acres of associated WIA
 - Total of 108,711 acres of public access created
- \$2.94 million annual cost
- GFP suspended enrollment in January 2014
 - Need additional \$1 million/year to fully enroll 100,000 acres



CREP Impact on CRP Public Hunting Access in eastern 1/3 of SD



• 2007

- 903,600 acres of CRP
- 118,500 in WIA
- 13% of CRP acres open to public hunting

• 2017

- 594,700 acres of CRP (34% less)
- 77,300 in WIA (35% less)
- + 80,000 CREP = 157,300
- 26% of CRP acres open to public hunting



Controlled Hunting Access Program (CHAP)



Controlled Hunting Access Program Stats

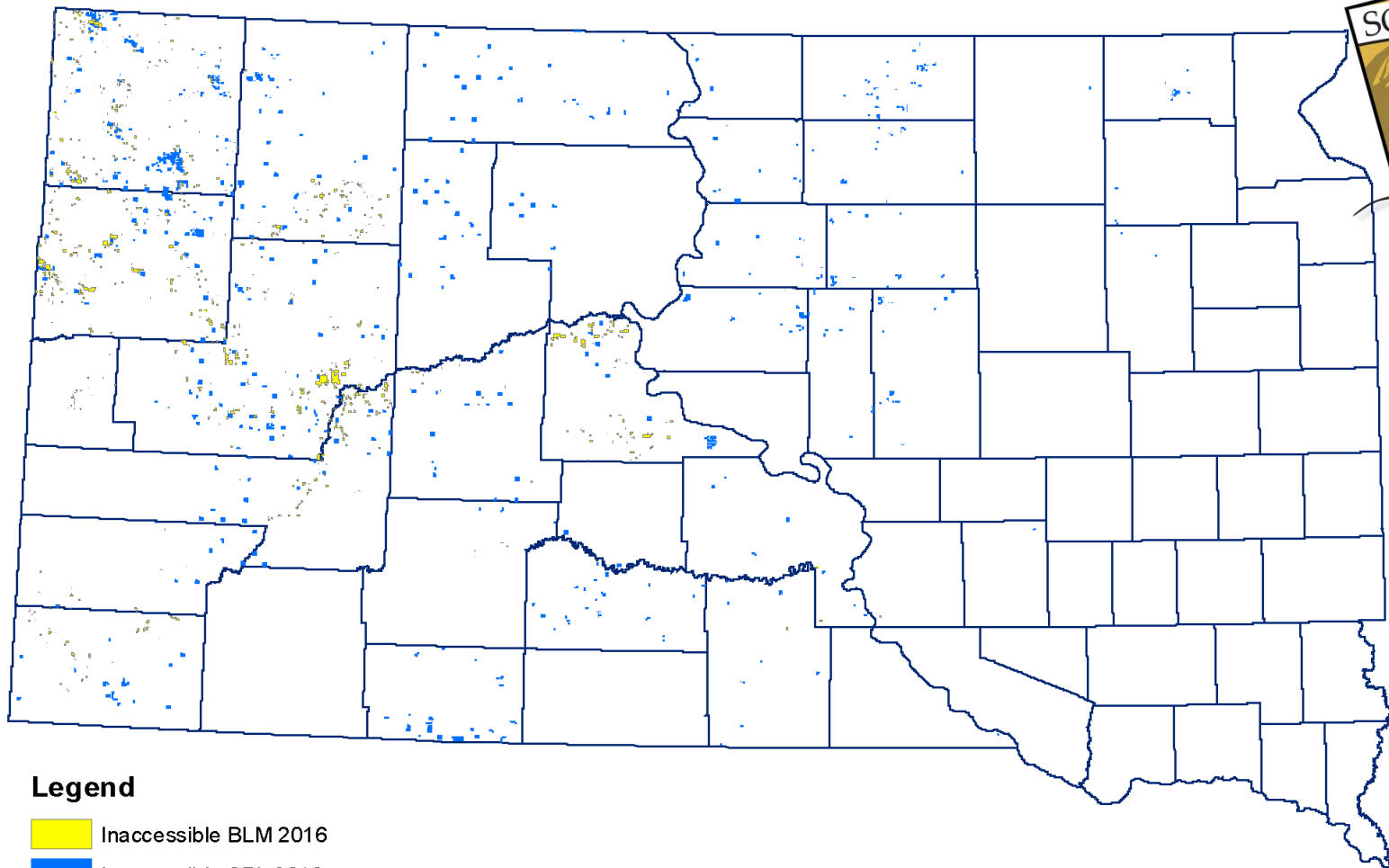
Year	# of CHAPs	Acres	Hunter Days	Payment
2009	13	16,887	1,423	\$14,230
2010	13	16,317	1,520	\$14,734
2011	13	21,527	1,727	\$17,396
2012	12	18,197	1,355	\$13,694
2013	11	20,251	1,030	\$10,662
2014	10	19,770	905	\$9,732
2015	17	20,822	891	\$11,338
2016	9	19,731	918	\$10,090
2017	12	22,522	1,296	\$14,164
2018	13	23,031		
Totals			11,065	\$116,040



CHAP Payment Guidelines

- \$6/hunter base +
 - \$2/hunter if no big game species restriction +
 - \$2/hunter if no big game season restriction
- Minimum \$250
- Max of \$12,000





Legend

- Inaccessible BLM 2016
- Inaccessible SPL 2016
- County Boundaries

Landlocked Public Land 2016

SD School & Public Land - 200,550 acres

US Bureau of Land Management Land – 98,460 acres

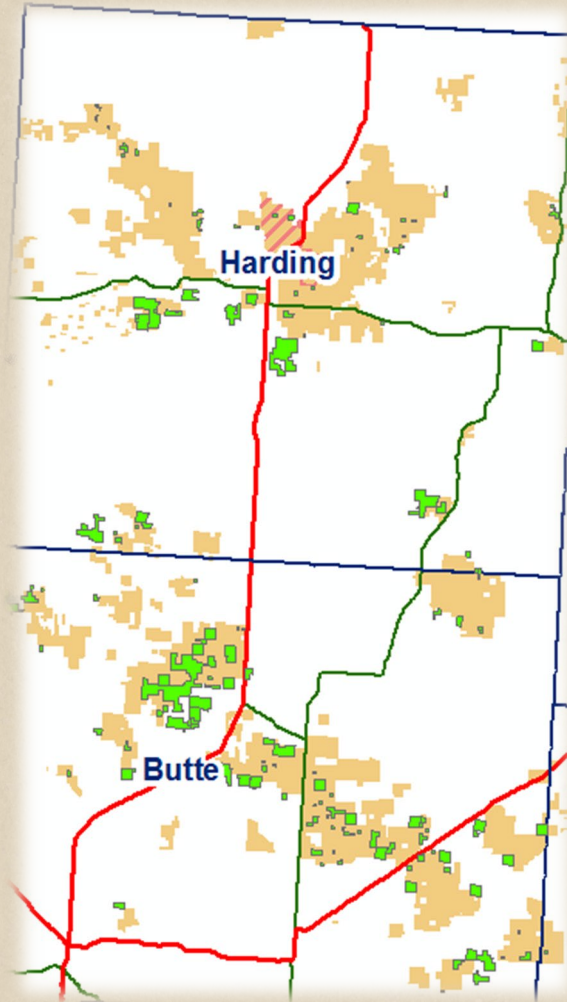
Increase public land hunting access to 50,000 additional acres by 2020



Develop opportunities with private landowners to access inaccessible (landlocked) public lands

The Walk-In Area Key

- The Walk-In Area program provided public hunting access to 57,500 acres of otherwise inaccessible public land in South Dakota in 2017.

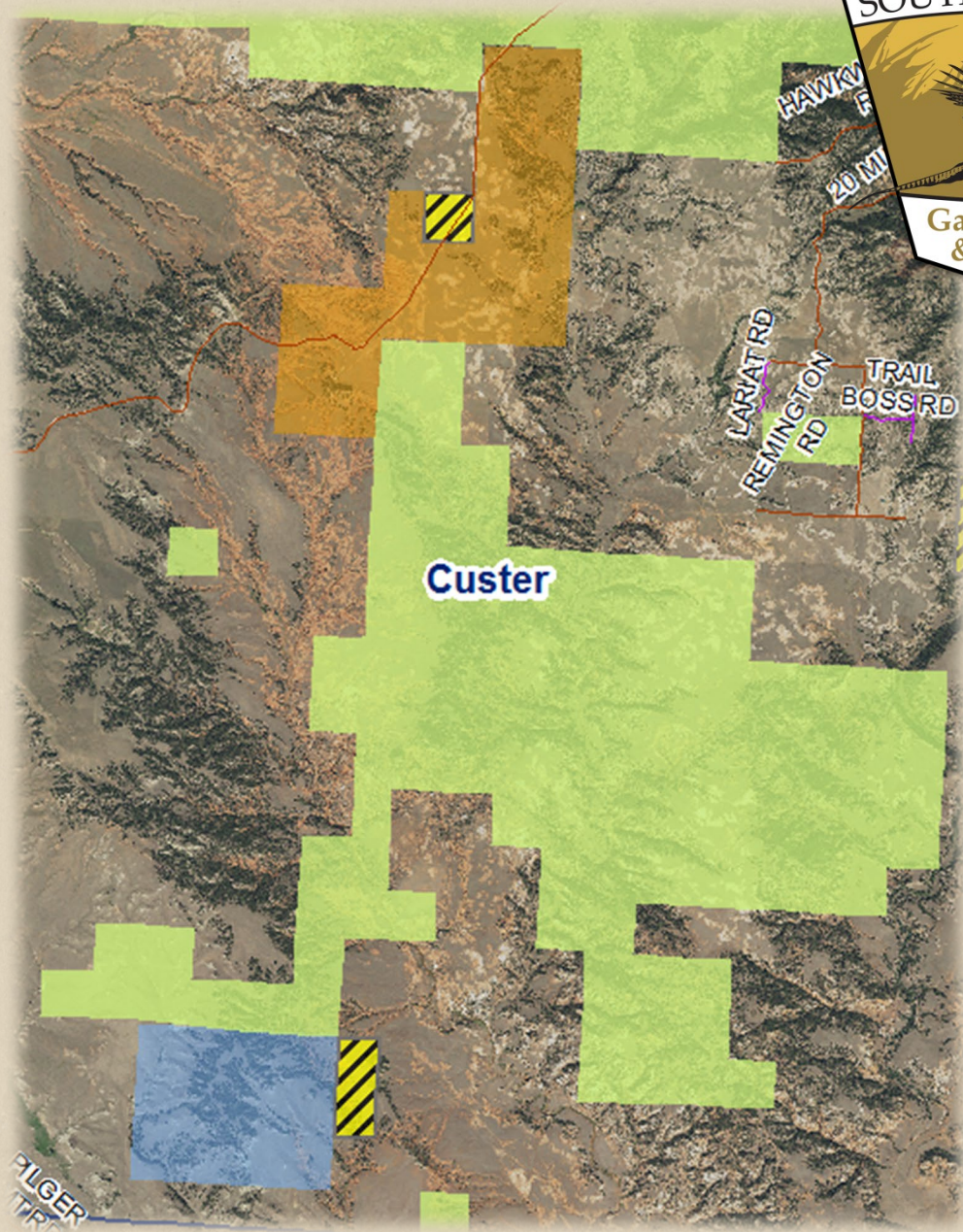


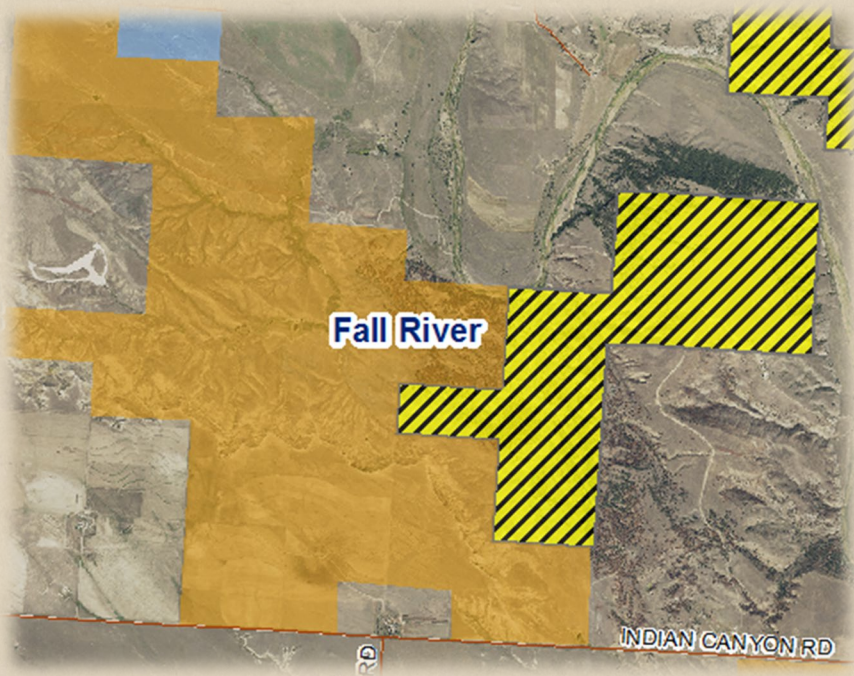
2018 WIA NEW Unlocking Results



County	LL Type	Unlocked Acres	Access Type	WIA Acres	Contract Date	Term	Notes
Butte	BLM	40	WIA	4,830	07/01/2018	5	560 acres BLM improved access
Butte	SPL	640	WIA	2,100	07/01/2018	3	
Charles Mix	GPA	80	WIA	160	07/01/2018	1	
Custer	BHNF	4,480	WIA	968	07/01/2018	5	
Custer	SPL	480	WIA	-	07/01/2018	5	
Custer	BLM	80	WIA	-	07/01/2018	5	
Fall River	BLM	960	WIA	4,065	07/01/2018	3	
Jackson	SPL	320	WIA	1,360	07/01/2018	10	
Perkins	SPL	320	WIA	2,188	07/01/2018	7	
Perkins	SPL	1,715	WIA	2,800	07/01/2018	6	
Perkins	BLM	30	WIA	579	07/01/2018	10	
Sully	SPL	240	WIA	1,120	07/01/2018	9	
McPherson	GPA	40	WIA	40	07/01/2018	10	
Deuel	GPA	20	WIA	117	07/01/2018	10	
TOTALs		9,445		20,327	29,772		

- 968 acres WIA
- Unlocked
5,040 acres
 - USFS BHNF
 - SPL
 - BLM

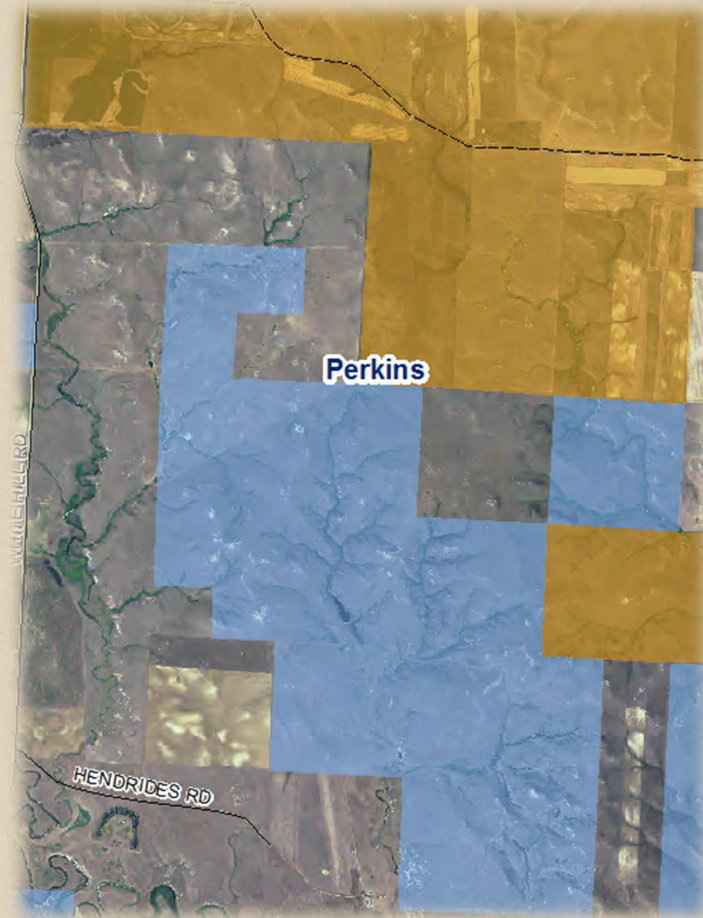




- 4,065 acres WIA
- Unlocked 960 acres of BLM

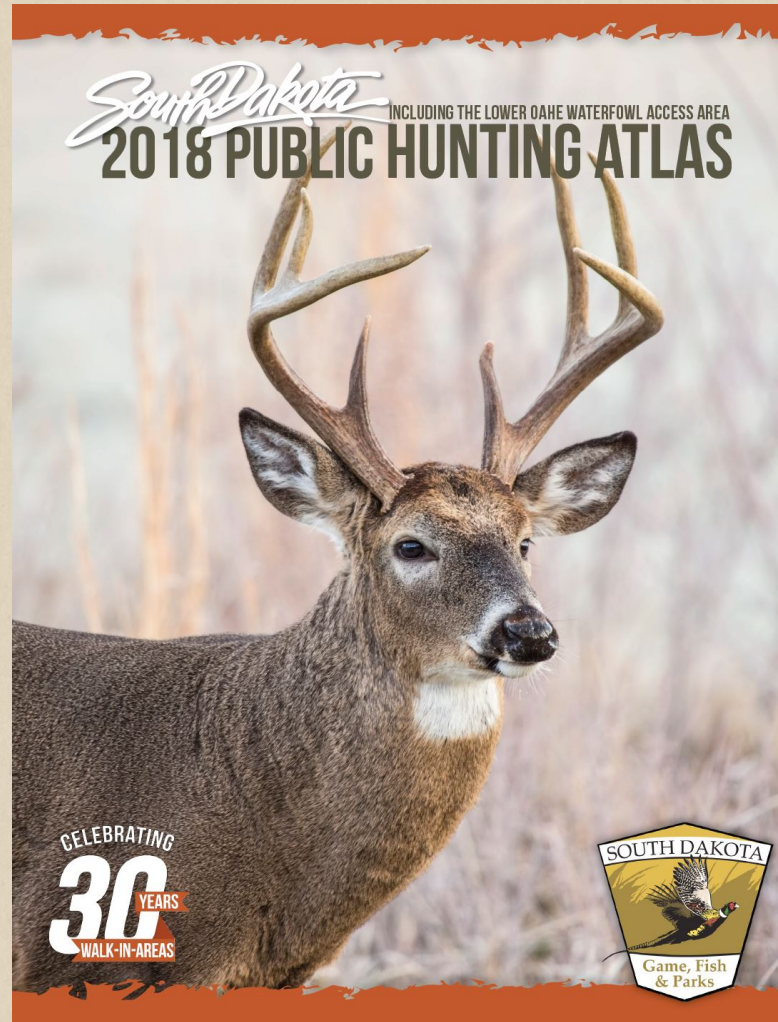


- 2,800 acres WIA
- Unlocked 1,715 acres of SPL

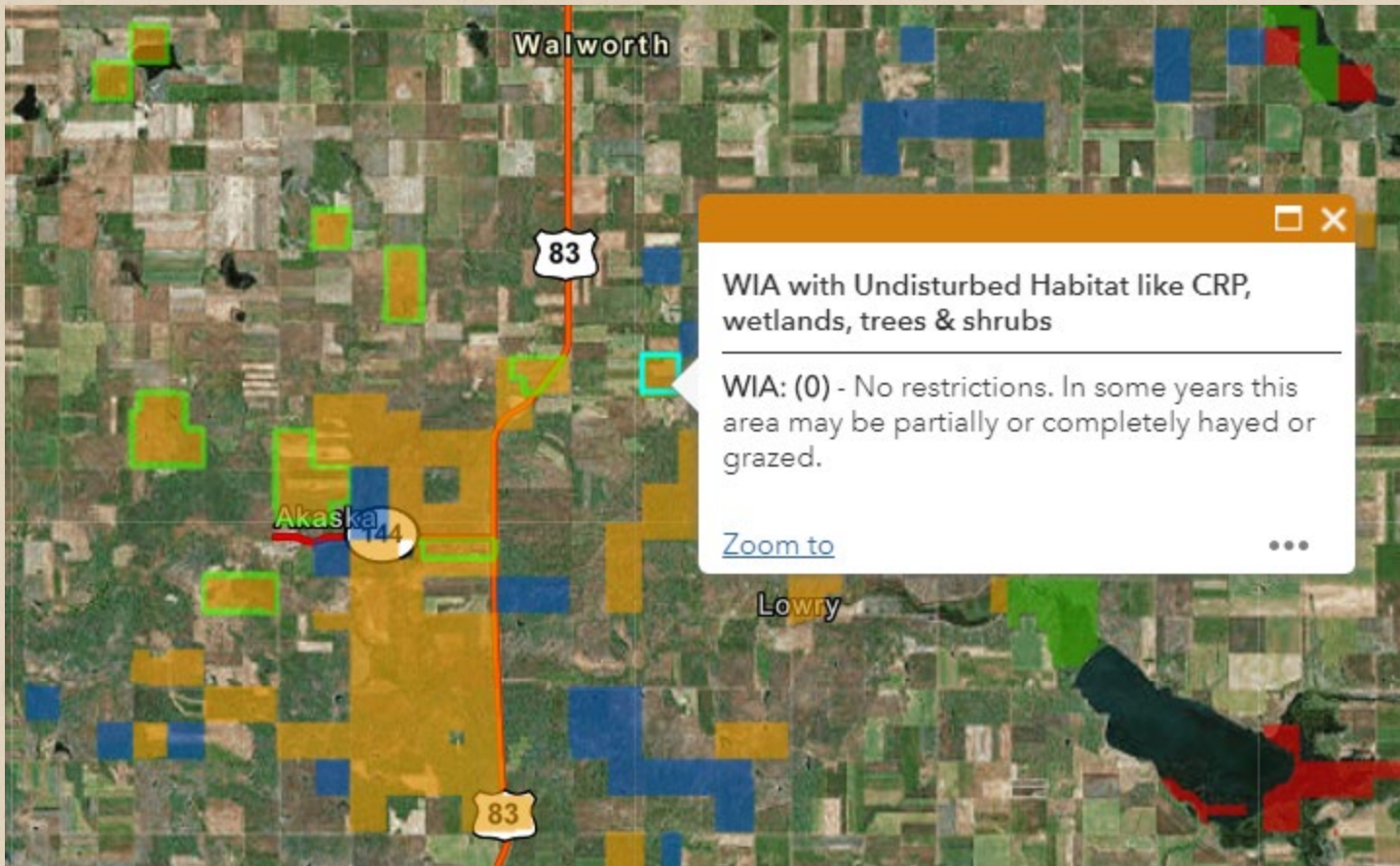


2018 Public Hunting Maps

- [On-line interactive map](#)
- [On-line Atlas Updates map](#)
- SDGFP Outdoors App
- Garmin GPS downloadable layer
- Google Earth downloadable layer
- Avenza Maps App georeferenced statewide hunting atlas
- Printable PDF maps



Improvements made for 2018



- Green outlined WIA indicating undisturbed habitat on digital maps
- WIA FAQs on the website
- Social media messages about added WIAs and WIA FAQs

Future Efforts

- Sending information letter to SD landowners about Access programs this winter
 - Continue partnering with landowners to meet strategic plan goals
- We would like to re-enroll CREP when it expires in 2020
- Continue improving hunting atlas and on-line maps





Questions

