

Statewide Combined Deer Harvest

There were 48,145 resident deer licenses (plus unlimited licenses) available in 2023 and 102,464 were issued. Nonresidents had 2,939 licenses (plus unlimited licenses) available and 8,888 were issued. Statewide, there were a total of 111,352 licenses sold that represented a total of 124,891 tags, a reduction of 4,600 licenses and 8,291 tags from 2022. A total of 70,022 individual hunters were issued deer licenses in 2023, down from 71,516 in 2022.

All hunters that listed a valid email address were surveyed using Survey123 Software. Hunters who did not supply a valid email address were not surveyed. Response rates ranged from 28% for Youth Antlerless Deer to 95% for Custer State Park Deer.

The projected statewide deer harvest was 48,630, a reduction of 6,750 from 2022. This estimate included 26,552 whitetail bucks, 16,003 whitetail does, 5,010 mule bucks and 1,065 mule does. Reduced harvest of both white-tailed and mule deer accounted for the overall difference. Mule deer made up approximately 12% of the total harvest.

The 2023 overall statewide harvest success decreased to 39% from 2022. Harvest success ranged from 24% for Waubay Refuge Deer to 89% for Custer State Park Deer.

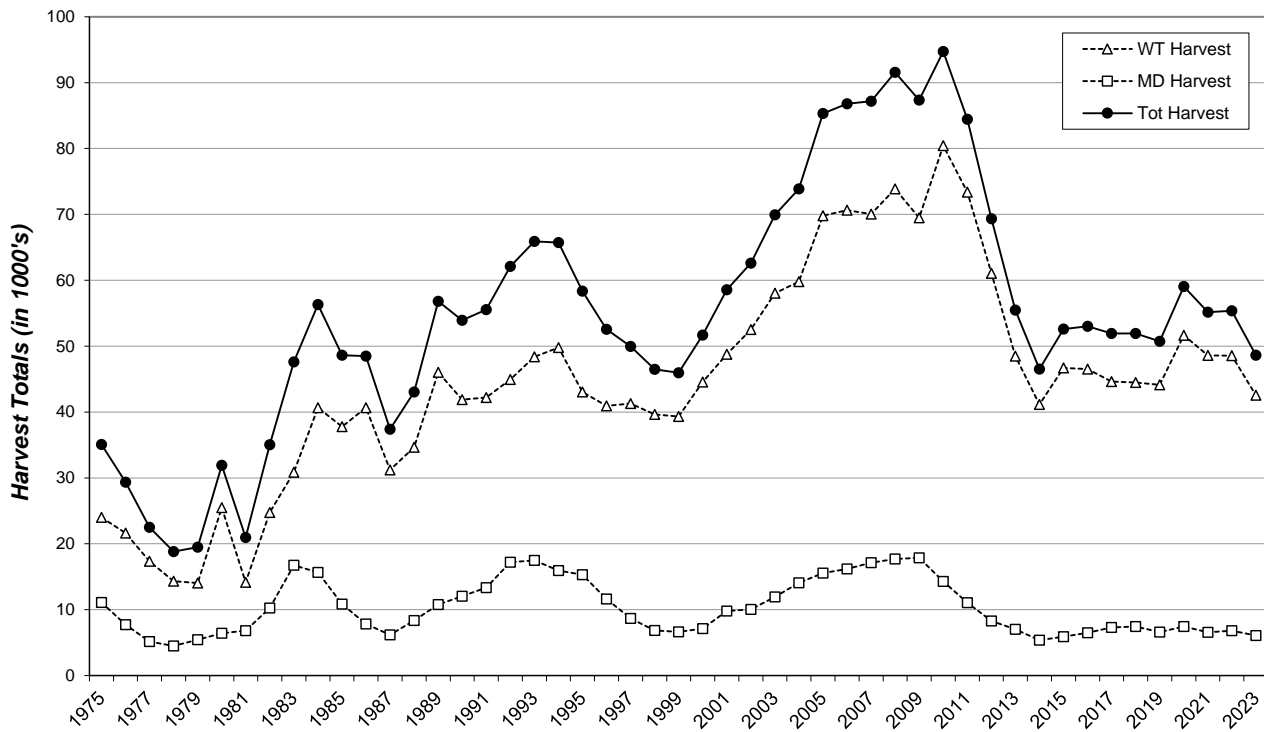
The total statewide estimate of 594,949 recreation days of deer hunting in 2023 results in an average of 5.34 days per hunter. Average hunter satisfaction values (1=very dissatisfied to 7=very satisfied) ranged from 3.20 for Waubay Refuge Deer to 6.50 for Black Hills Landowner Own Land Deer.

2023 Statewide Deer Harvest Projection Summary

last revised: 29 April 2024

SOUTH DAKOTA Harvest Statistic	Season	Archeary	Apprentice Antlerless	Youth Antlerless	Mentored Youth Antlerless	Muzzleloader	Landowner Own Land Antlerless	West River	West River Landowner Own Land	West River Special Buck Unit	East River	East River Landowner Own Land	East River Special Buck Unit	Refuges			Black Hills	Black Hills Landowner Own Land	Custer State Park	Grand Totals
		Sand Lake NWR	Waubay NWR	Lacreek NWR																
Licenses/Tags																				
Resident Licenses																				
Available	Unlimited	Unlimited	Unlimited	Unlimited	Unlimited	Unlimited	Unlimited	17,995	Unlimited	1,000	25,540	Unlimited	500	100	20	20	2,950	Unlimited	20	48,145
Sold	29,800	653	2,964	6,732	3,529	721	17,771	2,643	999	25,475	7,503	501	97	20	20	2,971	45	20	102,464	
Resident Tags																				
Available	Unlimited	Unlimited	Unlimited	Unlimited	Unlimited	Unlimited	Unlimited	25,190	Unlimited	1,000	25,540	Unlimited	500	100	20	20	2,950	Unlimited	20	55,340
Sold	29,800	653	2,964	6,732	3,529	721	24,851	4,034	999	25,475	11,771	501	97	20	20	2,971	55	20	115,213	
Nonresident Licenses																				
Available	Unlimited	0	Unlimited	Unlimited	Unlimited	Unlimited	Unlimited	1,439	Unlimited	1,000	Leftovers	250	N/A	10	2	2	236	N/A	N/A	2,939
Sold	4,974	0	322	253	130	27	1,605	88	980	197	65	197	N/A	9	2	2	234	N/A	N/A	8,888
Nonresident Tags																				
Available	Unlimited	0	Unlimited	Unlimited	Unlimited	Unlimited	Unlimited	2,015	Unlimited	1,000	Leftovers	250	N/A	10	2	2	236	N/A	N/A	3,515
Sold	4,974	0	322	253	130	27	2,278	131	980	65	271	N/A	9	2	2	234	N/A	N/A	9,678	
Total Licenses																				
Available	Unlimited	Unlimited	Unlimited	Unlimited	Unlimited	Unlimited	Unlimited	19,434	Unlimited	2,000	25,540	Unlimited	500	110	22	22	3,186	Unlimited	20	50,834
Sold	34,774	653	3,286	6,985	3,659	748	19,376	2,731	1,979	25,540	7,700	501	106	22	22	3,205	45	20	111,352	
Total Tags																				
Available	Unlimited	Unlimited	Unlimited	Unlimited	Unlimited	Unlimited	Unlimited	27,205	Unlimited	2,000	25,540	Unlimited	500	110	22	22	3,186	Unlimited	20	58,605
Sold	34,774	653	3,286	6,985	3,659	748	27,129	4,165	1,979	25,540	12,042	501	106	22	22	3,205	55	20	124,891	
Hunters																				
Available	Unlimited	Unlimited	Unlimited	Unlimited	Unlimited	Unlimited	Unlimited	27,205	Unlimited	2,000	25,540	Unlimited	500	110	22	22	3,186	Unlimited	20	58,605
Sold	26,011	653	3,286	6,985	3,542	628	18,671	2,731	1,979	24,794	7,700	501	106	22	22	3,205	45	20	70,022	
Recreation																				
Average Days Hunted	10.64	4.27	4.82	4.08	5.75	3.84	3.51	4.09	3.73	4.23	4.66	5.33	3.11	3.69	4.06	5.29	3.58	5.79	5.34	
Total Days Hunted	276,646	2,790	15,826	28,500	20,376	2,413	65,524	11,172	7,376	108,044	35,892	2,672	329	81	89	16,942	161	116	594,949	
Mean Satisfaction Score	4.57	5.69	5.05	5.24	4.22	4.83	4.55	4.71	5.29	4.45	4.64	4.61	3.64	3.20	4.38	4.75	6.50	4.74		
Harvest																				
White-tailed Deer																				
Bucks	5,276	36	145	328	213	9	5,924	725	941	8,189	2,789	271	34	5	6	1,624	21	18	26,552	
Does	2,062	292	1,191	2,630	601	224	3,365	280	15	3,844	1,244	10	1	0	0	236	6	0	16,003	
Total	7,338	329	1,336	2,958	813	233	9,289	1,005	956	12,033	4,033	281	35	5	6	1,860	27	18	42,555	
Mule Deer																				
Bucks	1,051	3	3	2	119	0	2,573	443	457	181	85	19	0	0	0	70	3	0	5,010	
Does	150	29	121	225	12	0	302	162	3	11	39	3	0	0	0	3	3	0	1,065	
Total	1,201	32	124	227	131	0	2,875	606	460	192	124	22	0	0	0	73	7	0	6,075	
Total Deer Harvest																				
Bucks	6,327	39	148	330	332	9	8,496	1,168	1,397	8,371	2,874	290	34	5	6	1,694	24	18	31,561	
Does	2,212	322	1,312	2,855	613	224	3,668	443	18	3,855	1,283	13	1	0	0	240	10	0	17,068	
Total	8,539	361	1,460	3,185	945	233	12,164	1,611	1,416	12,225	4,157	303	35	5	6	1,933	34	18	48,630	
Success																				
	25%	55%	44%	46%	26%	31%	45%	39%	72%	48%	35%	60%	33%	24%	25%	60%	61%	89%	39%	

South Dakota Combined Deer Harvest 1975-2023



South Dakota Combined Deer Licensing 1975-2023

