

PHEASANT

The 2018 pheasant season was open from 20 October 2018 – 6 January 2019 statewide. There was also a Youth season open 6-10 October on public and private land and an early resident season open 13-15 October on public lands only. The daily limit was 3 cock pheasants, possession 15. To hunt pheasants, residents were required to hold small game, 1-day small game, adult, senior or junior combination, or youth small game licenses; nonresidents were required to obtain adult or youth small game or nonresident shooting preserve licenses. Harvest surveys were sent to both resident and nonresident hunters. No shooting preserve license holders were surveyed and none of their harvest is included in any of the data in this report.

In 2018, there were 82,994 resident and 72,746 nonresident licenses issued that allowed holders to hunt pheasants. Approximately 10% of residents and nonresidents were surveyed for the upland bird seasons. Survey response rates were 60% for residents and 60% for nonresidents.

Based on survey responses indicating at least one day of hunting pheasants, there were a projected 53,577 resident and 69,018 nonresident pheasant hunters.

A projected total of 950,883 pheasants were harvested (392,020 by residents, 558,863 by nonresidents) during the 2018 seasons. When asked their satisfaction on the season, (1 being least satisfied, 7 being most satisfied), resident upland bird hunters reported an average satisfaction rating of 4.64 while nonresidents reported a higher satisfaction rating of 5.38.

Approximately 11,034 residents participated in the early, resident-only season. The projected harvest for this season was 18,620 birds.

The Youth-only season overall participation rate was approximately 5.5%; nonresidents were not surveyed on their participation in the Youth season.

The five counties with the highest reported harvests from highest to lowest were Brule, Tripp, Brown, Beadle, and Lyman.

Comparison of the 2009 - 2018 Pheasant season statistics

Year	Resident Hunters					Nonresident Hunters				
	Number Hunters	Harvest	Ave Day Hunted	Ave Bag	Satisfaction	Number Hunters	Harvest	Ave Day Hunted	Ave Bag	Satisfaction
2009	69,949	715,578	7.14	10.23	4.93	97,350	932,613	4.33	9.58	5.59
2010	72,465	803,637	7.16	11.09	5.20	100,189	1,027,939	4.42	10.26	5.88
2011	69,120	644,412	6.83	9.68	4.78	95,077	910,894	4.46	9.63	5.63
2012	69,240	599,675	6.92	9.09	4.65	93,801	829,198	4.35	8.90	5.14
2013	57,647	368,567	6.33	7.15	4.11	74,413	561,445	3.99	7.74	4.95
2014	61,776	504,144	6.31	8.32	4.85	79,195	695,660	4.16	8.79	5.52
2015	65,135	517,942	6.17	8.06	4.98	84,901	737,936	4.15	8.71	5.49
2016	61,746	478,099	6.24	7.86	4.72	81,141	692,497	4.14	8.57	5.43
2017	52,538	326,936	6.08	6.30	4.23	67,232	501,773	3.96	7.47	5.06
2018	53,577	392,020	6.26	7.38	4.64	69,018	558,863	4.06	8.11	5.38

PHEASANT HARVEST PROJECTIONS FOR 2018

Revised:
5/13/2019

	RESIDENT TOTALS BY LICENSE TYPE						NONRESIDENT TOTALS		
	Combo	Junior Combo	Senior Combo	Small Game	Youth SmGm	Sum Estimates	Nonres Sm Game	Youth Sm Game	Sum Estimates
Licenses Sold	45,327	7,069	9,423	17,059	4,116	82,994	70,843	1,903	72,746
Projected ACTIVE UPLAND BIRD HUNTERS	28,373	3,549	4,962	13,917	3,261	54,062	67,726	1,718	69,444
Number Sampled by Survey	4,311	598	884	1,626	378	7,797	7,611	200	7,811
Number Responded to Survey	2,612	247	752	809	236	4,656	4,565	110	4,675
% Responded and Participated in Season	63%	50%	53%	82%	79%	64%	97%	92%	97%
Responded and Participated in Season	1,635	124	396	660	187	3,002	4,450	101	4,551
Responded but DID NOT HUNT	977	123	356	149	49	1,654	115	9	124
Survey Response Rate	60.6%	41.3%	85.1%	49.8%	62.4%	59.7%	60.0%	55.0%	59.9%
No. Hunters Reporting Pheasant Days	1,621	122	386	658	186	2,973	4,422	101	4,523
Sum Pheasant Hunted Days	11,200	761	2,373	3,224	1,051	18,609	18,049	301	18,350
Average Days Hunted Pheasants	6.91	6.24	6.15	4.90	5.65	6.26	4.08	2.98	4.06
Sum Pheasants Bagged	13,986	841	2,525	3,732	855	21,939	36,153	508	36,661
Average Pheasant Bag for Season	8.63	6.89	6.54	5.67	4.60	7.38	8.18	5.03	8.11
Projected Days Pheasant Hunting	194,358	21,779	29,735	67,983	18,330	332,185	274,693	5,120	279,812
Projected No. Pheasant Hunters	28,130	3,492	4,837	13,875	3,244	53,577	67,300	1,718	69,018
Projected Pheasant Bag	242,704	24,069	31,640	78,695	14,912	392,020	550,223	8,641	558,863
LCI (95%)	225,384	18,461	27,056	70,693	10,966	371,080	538,370	7,120	546,918
UCI (95%)	260,249	30,026	36,394	86,803	18,930	413,000	562,108	10,186	570,841
TOTAL PHEASANT HARVEST =							950,883		
LCI (95%) =							926,778		
UCI (95%) =							975,023		
RESIDENT-ONLY OPENING WEEKEND:									
No. Hunters Reporting Pheasant Days	364	25	66	124	40	619	-	-	-
Sum Pheasant Hunted Days	541	37	100	191	57	926	-	-	-
Average Days Hunted Pheasants	1.49	1.48	1.52	1.54	1.43	1.50	-	-	-
Sum Pheasants Bagged	670	37	81	206	33	1,027	-	-	-
Average Pheasant Bag for Weekend	1.84	1.48	1.23	1.66	0.83	1.66	-	-	-
Projected Days Pheasant Hunting	9,388	1,059	1,253	4,028	994	16,506	-	-	-
Projected No. Pheasant Hunters	6,317	715	827	2,615	698	11,034	-	-	-
Projected Pheasant Bag	11,627	1,059	1,015	4,344	576	18,620	-	-	-
RESIDENT-ONLY WEEKEND PHEASANT HARVEST =							18,620		
MENTORED YOUTH PARTICIPATION:									
No. Hunters Reporting Participation	138	NA	31	42	NA	211	-	-	-
Projected No. Hunters Participating	2,395		388	886		3,669	-	-	-
Percent Hunters Participating	5.3%		4.1%	5.2%		5.1%	-	-	-
Upland Bird Hunters Mean Satisfaction Score *	4.64	4.83	4.26	4.81	4.68	4.64	5.38	5.43	5.38

* Based on scale of 1-7 with 1="very dissatisfied" and 7="very satisfied"

RESIDENT-ONLY WEEKEND 2018 PHEASANT SEASON PARTICIPATION AND BAG				
Last Revised: 21 May 2019				
	# Days Hunted	# Responded	% of Total	Ave. Bag
Residents	0	4,037	86.7%	
	1	365	7.8%	0.95
	2	201	4.3%	2.18
	3	53	1.1%	4.57

2018 YOUTH-ONLY PHEASANT SEASON PARTICIPATION			
Last Revised: 21 May 2019			
License Type	Number Participated	Did Not Participate	Percent Participated
Small Game	42	767	5.2%
Combination	138	2,474	5.3%
Senior Combination	31	721	4.1%
Youth Small Game	34	202	14.4%
Junior Combination	9	238	3.6%
Total	254	4,402	5.5%

Total Pheasant Harvest Distribution by County 2018

COUNTY	HUNTER DISTRIBUTION			HARVEST DISTRIBUTION			Birds/Hunter **
	# Projected	% of Total	# Proj w/ Unk *	# Projected	% of Total	# Proj w/ Unk *	
Minnehaha	1,515	1.3	1,571	5,561	0.6	5,727	3.7
Pennington	259	0.2	269	920	0.1	948	3.5
Brown	5,982	5.0	6,156	50,604	5.5	51,837	8.5
Beadle	5,099	4.3	5,250	43,305	4.7	44,415	8.5
Codington	2,275	1.9	2,351	18,502	2.0	19,039	8.1
Brookings	1,757	1.5	1,817	13,085	1.4	13,479	7.4
Yankton	1,084	0.9	1,121	5,012	0.5	5,152	4.6
Davison	3,591	3.0	3,695	22,219	2.4	22,747	6.2
Lawrence	33	0.0	34	137	0.0	140	4.1
Aurora	4,439	3.7	4,569	38,735	4.2	39,682	8.7
Bennett	546	0.5	565	2,806	0.3	2,885	5.1
Bon Homme	808	0.7	837	4,141	0.4	4,253	5.1
Brule	6,555	5.5	6,731	54,088	5.8	55,315	8.3
Buffalo	458	0.4	472	4,009	0.4	4,110	8.8
Butte	100	0.1	103	909	0.1	934	9.1
Campbell	1,394	1.2	1,434	11,712	1.3	11,995	8.4
Charles Mix	3,588	3.0	3,695	28,949	3.1	29,674	8.1
Clark	2,401	2.0	2,473	19,246	2.1	19,753	8.0
Clay	482	0.4	500	2,490	0.3	2,563	5.2
Corson	607	0.5	625	4,488	0.5	4,588	7.4
Custer	18	0.0	19	214	0.0	222	11.9
Day	1,538	1.3	1,586	14,927	1.6	15,357	9.7
Deuel	736	0.6	762	4,003	0.4	4,116	5.4
Dewey	1,384	1.2	1,424	12,004	1.3	12,287	8.7
Douglas	1,356	1.1	1,402	8,746	0.9	8,988	6.4
Edmunds	2,843	2.4	2,926	22,956	2.5	23,513	8.1
Fall River	316	0.3	328	2,439	0.3	2,517	7.7
Faulk	2,681	2.3	2,755	22,616	2.4	23,144	8.4
Grant	578	0.5	600	4,171	0.4	4,304	7.2
Gregory	3,671	3.1	3,773	33,881	3.7	34,678	9.2
Haakon	772	0.6	799	5,576	0.6	5,744	7.2
Hamlin	1,159	1.0	1,199	6,062	0.7	6,232	5.2
Hand	2,860	2.4	2,945	18,359	2.0	18,815	6.4
Hanson	1,198	1.0	1,237	9,873	1.1	10,142	8.2
Harding	288	0.2	297	2,399	0.3	2,458	8.3
Hughes	3,284	2.8	3,382	25,721	2.8	26,379	7.8
Hutchinson	2,041	1.7	2,108	12,619	1.4	12,962	6.2
Hyde	1,094	0.9	1,124	7,706	0.8	7,890	7.0
Jackson	141	0.1	147	125	0.0	129	0.9
Jerauld	2,195	1.8	2,264	18,441	2.0	18,936	8.4
Jones	1,144	1.0	1,177	8,683	0.9	8,905	7.6
Kingsbury	2,249	1.9	2,323	17,532	1.9	18,022	7.8
Lake	1,190	1.0	1,233	8,643	0.9	8,915	7.3
Lincoln	674	0.6	699	6,585	0.7	6,802	9.8
Lyman	5,263	4.4	5,413	42,897	4.6	43,902	8.2
McCook	1,775	1.5	1,839	11,177	1.2	11,525	6.3
McPherson	1,960	1.6	2,015	13,983	1.5	14,310	7.1
Marshall	1,043	0.9	1,074	7,684	0.8	7,877	7.4
Meade	208	0.2	215	931	0.1	959	4.5
Mellette	362	0.3	375	2,019	0.2	2,080	5.6
Miner	2,974	2.5	3,073	28,778	3.1	29,583	9.7
Moody	476	0.4	493	3,146	0.3	3,249	6.6
Perkins	1,485	1.2	1,533	9,841	1.1	10,114	6.6
Potter	2,763	2.3	2,842	24,636	2.7	25,237	8.9
Roberts	1,226	1.0	1,268	7,191	0.8	7,404	5.9
Sanborn	2,143	1.8	2,208	17,843	1.9	18,300	8.3
Spink	4,790	4.0	4,931	39,336	4.2	40,302	8.2
Stanley	1,690	1.4	1,743	14,548	1.6	14,927	8.6
Sully	2,169	1.8	2,236	19,847	2.1	20,366	9.2
Tripp	6,323	5.3	6,496	52,914	5.7	54,111	8.4
Turner	1,016	0.9	1,055	3,302	0.4	3,407	3.2
Union	349	0.3	362	2,791	0.3	2,874	8.0
Walworth	2,159	1.8	2,224	15,697	1.7	16,086	7.3
Ziebach	255	0.2	262	2,160	0.2	2,213	8.5
Shannon	0	0.0	0	0	0.0	0	0
Todd	155	0.1	159	1,335	0.1	1,365	8.6
Unk/Unreported	3,623	-	-	23,624	-	-	6.5

TOTALS: 122,595 100% 122,595 950,883 100% 950,883 7.76

Last Revised: 21 May 2019

** Includes unknown county projection values by assuming unknown county values are distributed the same as reported county values. Total values may be different due to rounding.*

*** Calculation uses "# projected" values without correction for unknown/unreported county values.*

Resident Pheasant Harvest Distribution by County 2018

COUNTY	HUNTER DISTRIBUTION				HARVEST DISTRIBUTION				Birds/Hunter **
	# Reported	# Projected	% of Total	# Proj w/ Unk *	# Reported	# Projected	% of Total	# Proj w/ Unk *	
Minnehaha	68	1,225	2.4	1,274	231	4,128	1.1	4,265	3.4
Pennington	11	198	0.4	206	37	661	0.2	683	3.3
Brown	116	2,090	4.1	2,173	921	16,457	4.3	17,005	7.9
Beadle	106	1,910	3.7	1,986	1,021	18,244	4.8	18,851	9.6
Codington	78	1,406	2.7	1,461	701	12,526	3.3	12,943	8.9
Brookings	67	1,207	2.3	1,255	554	9,899	2.6	10,229	8.2
Yankton	39	703	1.4	731	167	2,984	0.8	3,083	4.2
Davison	68	1,225	2.4	1,274	346	6,183	1.6	6,388	5.0
Lawrence	1	18	0.0	19	0	0	0.0	0	0.0
Aurora	88	1,586	3.1	1,649	720	12,865	3.4	13,294	8.1
Bennett	21	378	0.7	393	99	1,769	0.5	1,828	4.7
Bon Homme	33	595	1.2	618	120	2,144	0.6	2,216	3.6
Brule	75	1,352	2.6	1,405	599	10,703	2.8	11,060	7.9
Buffalo	11	198	0.4	206	87	1,555	0.4	1,606	7.8
Butte	3	54	0.1	56	27	482	0.1	499	8.9
Campbell	24	433	0.8	450	205	3,663	1.0	3,785	8.5
Charles Mix	78	1,406	2.7	1,461	610	10,900	2.9	11,263	7.8
Clark	57	1,027	2.0	1,068	514	9,184	2.4	9,490	8.9
Clay	20	360	0.7	375	95	1,698	0.4	1,754	4.7
Corson	10	180	0.3	187	43	768	0.2	794	4.3
Custer	1	18	0.0	19	12	214	0.1	222	11.9
Day	43	775	1.5	806	553	9,881	2.6	10,210	12.8
Deuel	29	523	1.0	543	137	2,448	0.6	2,530	4.7
Dewey	26	469	0.9	487	177	3,163	0.8	3,268	6.8
Douglas	49	883	1.7	918	283	5,057	1.3	5,225	5.7
Edmunds	57	1,027	2.0	1,068	406	7,255	1.9	7,496	7.1
Fall River	15	270	0.5	281	122	2,180	0.6	2,253	8.1
Faulk	37	667	1.3	693	317	5,664	1.5	5,853	8.5
Grant	27	487	0.9	506	207	3,699	1.0	3,822	7.6
Gregory	53	955	1.9	993	497	8,881	2.3	9,176	9.3
Haakon	31	559	1.1	581	237	4,235	1.1	4,376	7.6
Hamlin	44	793	1.5	824	207	3,699	1.0	3,822	4.7
Hand	63	1,135	2.2	1,180	368	6,576	1.7	6,795	5.8
Hanson	36	649	1.3	674	300	5,361	1.4	5,539	8.3
Harding	5	90	0.2	94	43	768	0.2	794	8.5
Hughes	73	1,316	2.6	1,368	600	10,721	2.8	11,078	8.1
Hutchinson	65	1,171	2.3	1,218	382	6,826	1.8	7,053	5.8
Hyde	15	270	0.5	281	125	2,234	0.6	2,308	8.3
Jackson	7	126	0.2	131	7	125	0.0	129	1.0
Jerauld	60	1,081	2.1	1,124	527	9,417	2.5	9,730	8.7
Jones	22	396	0.8	412	201	3,592	0.9	3,711	9.1
Kingsbury	74	1,334	2.6	1,386	587	10,489	2.8	10,838	7.9
Lake	55	991	1.9	1,030	418	7,469	2.0	7,718	7.5
Lincoln	34	613	1.2	637	360	6,433	1.7	6,647	10.5
Lyman	88	1,586	3.1	1,649	610	10,900	2.9	11,263	6.9
McCook	79	1,424	2.8	1,480	524	9,363	2.5	9,675	6.6
McPherson	30	541	1.0	562	199	3,556	0.9	3,674	6.6
Marshall	24	433	0.8	450	163	2,913	0.8	3,010	6.7
Meade	9	162	0.3	169	41	733	0.2	757	4.5
Mellette	15	270	0.5	281	84	1,501	0.4	1,551	5.6
Miner	99	1,784	3.5	1,855	963	17,207	4.5	17,780	9.6
Moody	23	414	0.8	431	165	2,948	0.8	3,046	7.1
Perkins	46	829	1.6	862	317	5,664	1.5	5,853	6.8
Potter	50	901	1.7	937	448	8,005	2.1	8,272	8.9
Roberts	46	829	1.6	862	289	5,164	1.4	5,336	6.2
Sanborn	52	937	1.8	974	421	7,523	2.0	7,773	8.0
Spink	99	1,784	3.5	1,855	746	13,330	3.5	13,774	7.5
Stanley	43	775	1.5	806	368	6,576	1.7	6,795	8.5
Sully	56	1,009	2.0	1,049	511	9,131	2.4	9,435	9.0
Tripp	85	1,532	3.0	1,592	570	10,185	2.7	10,524	6.6
Turner	53	955	1.9	993	166	2,966	0.8	3,065	3.1
Union	16	288	0.6	300	111	1,983	0.5	2,049	6.9
Walworth	47	847	1.6	880	312	5,575	1.5	5,761	6.6
Ziebach	4	72	0.1	75	39	697	0.2	720	9.7
Shannon	0	0	0.0	0	0	0	0.0	0	0
Todd	1	18	0.0	19	15	268	0.1	277	14.9
Unk/Unreported	113	2,036	-	-	707	12,633	-	-	6.2
TOTALS:	2,973	53,577	100%	53,577	21,939	392,020	100%	392,020	7.32

Last Revised: 21 May 2019

* Includes unknown county projection values by assuming unknown county values are distributed the same as reported county values. Total values may be different due to rounding.

** Calculation uses "# projected" values without correction for unknown/unreported county values.

Nonresident Pheasant Harvest Distribution by County 2018

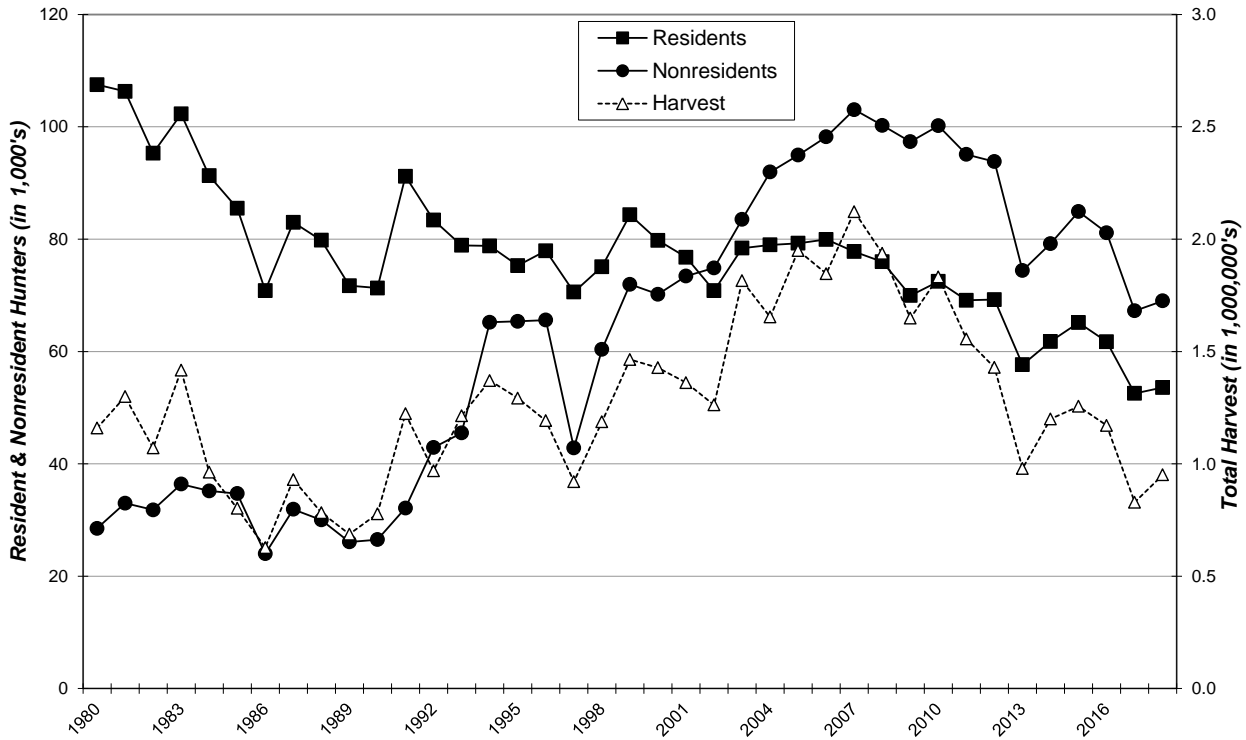
COUNTY	HUNTER DISTRIBUTION				HARVEST DISTRIBUTION				
	# Reported	# Projected	% of Total	# Proj w/ Unk *	# Reported	# Projected	% of Total	# Proj w/ Unk *	Birds/Hunter **
Minnehaha	19	290	0.4	297	94	1,433	0.3	1,462	4.9
Pennington	4	61	0.1	62	17	259	0.0	264	4.2
Brown	255	3,891	5.8	3,983	2,240	34,147	6.2	34,832	8.8
Beadle	209	3,189	4.7	3,264	1,644	25,061	4.6	25,564	7.9
Codington	57	870	1.3	890	392	5,976	1.1	6,096	6.9
Brookings	36	549	0.8	562	209	3,186	0.6	3,250	5.8
Yankton	25	381	0.6	390	133	2,027	0.4	2,068	5.3
Davison	155	2,365	3.5	2,421	1,052	16,037	2.9	16,358	6.8
Lawrence	1	15	0.0	16	9	137	0.0	140	9.0
Aurora	187	2,853	4.2	2,921	1,697	25,869	4.7	26,388	9.1
Bennett	11	168	0.2	172	68	1,037	0.2	1,057	6.2
Bon Homme	14	214	0.3	219	131	1,997	0.4	2,037	9.3
Brule	341	5,203	7.7	5,326	2,846	43,385	7.9	44,255	8.3
Buffalo	17	259	0.4	266	161	2,454	0.4	2,504	9.5
Butte	3	46	0.1	47	28	427	0.1	435	9.3
Campbell	63	961	1.4	984	528	8,049	1.5	8,210	8.4
Charles Mix	143	2,182	3.2	2,233	1,184	18,049	3.3	18,411	8.3
Clark	90	1,373	2.0	1,406	660	10,061	1.8	10,263	7.3
Clay	8	122	0.2	125	52	793	0.1	809	6.5
Corson	28	427	0.6	437	244	3,720	0.7	3,794	8.7
Custer	0	0	0.0	0	0	0	0.0	0	0
Day	50	763	1.1	781	331	5,046	0.9	5,147	6.6
Deuel	14	214	0.3	219	102	1,555	0.3	1,586	7.3
Dewey	60	916	1.4	937	580	8,842	1.6	9,019	9.7
Douglas	31	473	0.7	484	242	3,689	0.7	3,763	7.8
Edmunds	119	1,816	2.7	1,859	1,030	15,701	2.9	16,016	8.6
Fall River	3	46	0.1	47	17	259	0.0	264	5.7
Faulk	132	2,014	3.0	2,062	1,112	16,951	3.1	17,291	8.4
Grant	6	92	0.1	94	31	473	0.1	482	5.2
Gregory	178	2,716	4.0	2,780	1,640	25,000	4.6	25,502	9.2
Haakon	14	214	0.3	219	88	1,341	0.2	1,368	6.3
Hamlin	24	366	0.5	375	155	2,363	0.4	2,410	6.5
Hand	113	1,724	2.6	1,765	773	11,784	2.2	12,020	6.8
Hanson	36	549	0.8	562	296	4,512	0.8	4,603	8.2
Harding	13	198	0.3	203	107	1,631	0.3	1,664	8.2
Hughes	129	1,968	2.9	2,015	984	15,000	2.7	15,301	7.6
Hutchinson	57	870	1.3	890	380	5,793	1.1	5,909	6.7
Hyde	54	824	1.2	843	359	5,473	1.0	5,582	6.6
Jackson	1	15	0.0	16	0	0	0.0	0	0.0
Jerauld	73	1,114	1.7	1,140	592	9,024	1.6	9,206	8.1
Jones	49	748	1.1	765	334	5,092	0.9	5,194	6.8
Kingsbury	60	916	1.4	937	462	7,043	1.3	7,184	7.7
Lake	13	198	0.3	203	77	1,174	0.2	1,197	5.9
Lincoln	4	61	0.1	62	10	152	0.0	155	2.5
Lyman	241	3,677	5.5	3,764	2,099	31,997	5.8	32,639	8.7
McCook	23	351	0.5	359	119	1,814	0.3	1,850	5.2
McPherson	93	1,419	2.1	1,453	684	10,427	1.9	10,636	7.3
Marshall	40	610	0.9	625	313	4,771	0.9	4,867	7.8
Meade	3	46	0.1	47	13	198	0.0	202	4.3
Mellette	6	92	0.1	94	34	518	0.1	529	5.7
Miner	78	1,190	1.8	1,218	759	11,570	2.1	11,802	9.7
Moody	4	61	0.1	62	13	198	0.0	202	3.2
Perkins	43	656	1.0	672	274	4,177	0.8	4,261	6.4
Potter	122	1,862	2.8	1,905	1,091	16,631	3.0	16,965	8.9
Roberts	26	397	0.6	406	133	2,027	0.4	2,068	5.1
Sanborn	79	1,205	1.8	1,234	677	10,320	1.9	10,527	8.6
Spink	197	3,006	4.5	3,077	1,706	26,006	4.7	26,528	8.7
Stanley	60	916	1.4	937	523	7,973	1.5	8,133	8.7
Sully	76	1,160	1.7	1,187	703	10,717	2.0	10,932	9.2
Tripp	314	4,791	7.1	4,904	2,803	42,729	7.8	43,586	8.9
Turner	4	61	0.1	62	22	335	0.1	342	5.5
Union	4	61	0.1	62	53	808	0.1	824	13.2
Walworth	86	1,312	1.9	1,343	664	10,122	1.8	10,325	7.7
Ziebach	12	183	0.3	187	96	1,463	0.3	1,493	8.0
Shannon	0	0	0.0	0	0	0	0.0	0	0
Todd	9	137	0.2	141	70	1,067	0.2	1,088	7.8
Unk/Unreported	104	1,587	-	-	721	10,991	-	-	6.9
TOTALS	4,523	69,018	100%	69,018	36,661	558,863	100%	558,863	8.10

Last Revised: 21 May 2019

* Includes unknown county projection values by assuming unknown county values are distributed the same as reported county values. Total values may be different due to rounding.

** Calculation uses "# projected" values without correction for unknown/unreported county values.

SOUTH DAKOTA PHEASANT HARVEST 1980-2018



SOUTH DAKOTA PHEASANT HUNTERS AND AVERAGE SEASON HARVEST 1980-2018

