

SOUTH DAKOTA
GAME, FISH AND PARKS

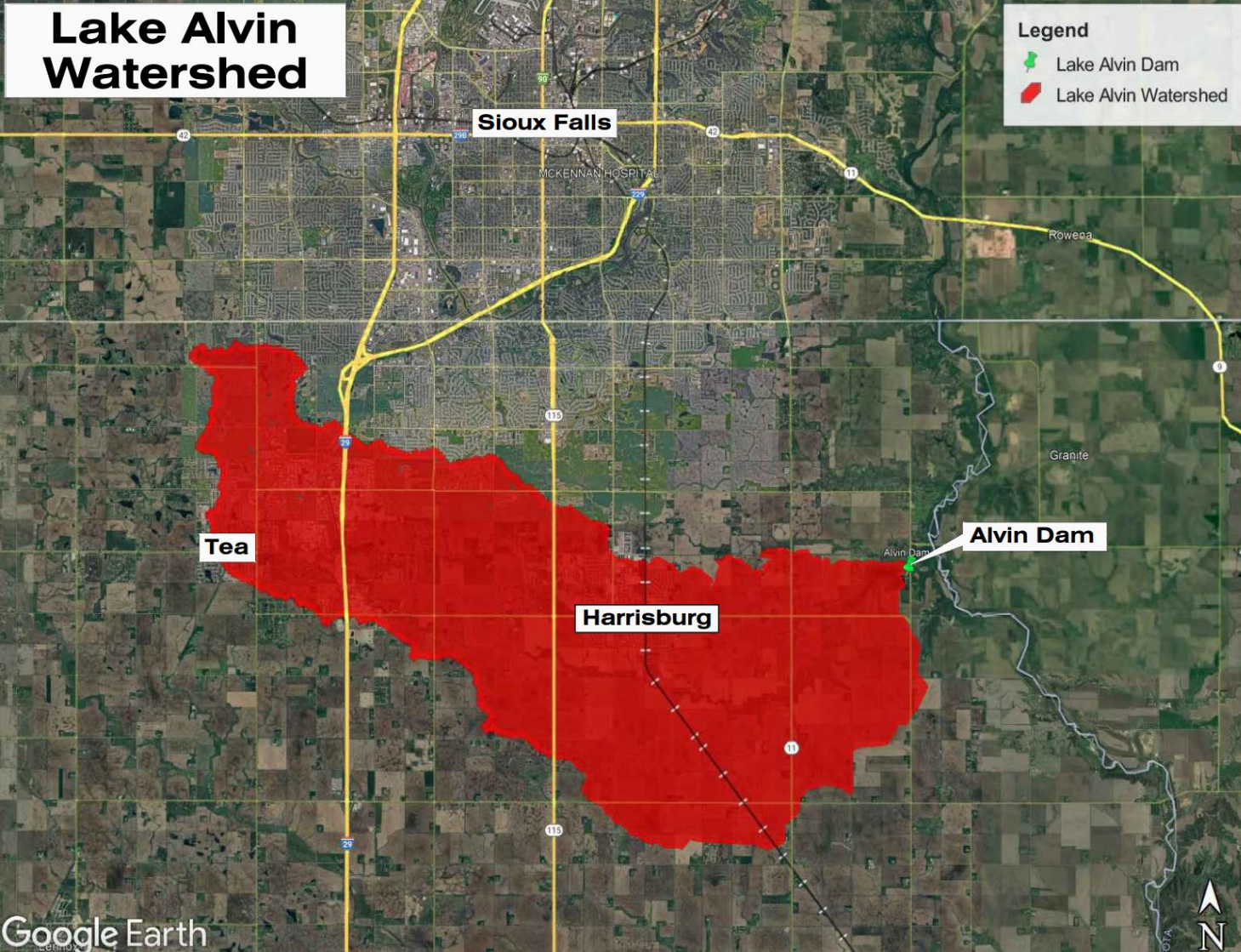


Lake Alvin Recreation Area

- Annual Visitation – 120,000 +
- Approximately 244 total acres- Recreation Area approximately 52 acres.
- Amenities
 - Boat Ramps
 - Swimming Beach
 - Picnic Shelter
 - Shore fishing Access
 - Playground
 - Kayaking/Canoeing
 - Trail
 - Recreational Boating
 - GPA
- Size of lake/fish species – approximately 105 acres and includes: walleye, pike, largemouth bass, crappie, sunfish, yellow perch, channel catfish, and bullheads.



Lake Alvin Watershed



Lake Alvin Watershed



2019 Spillway Damage

- Initial damage assessment
- FEMA determination of eligible repair funding
- Consultant analysis and recommendation to replace vs repair
- Initial funding during 2022 legislative session
- Final permitting and design
- Supplemental funding during 2024 legislative session
- Hillside tree removal
- Contract awarded for spillway replacement

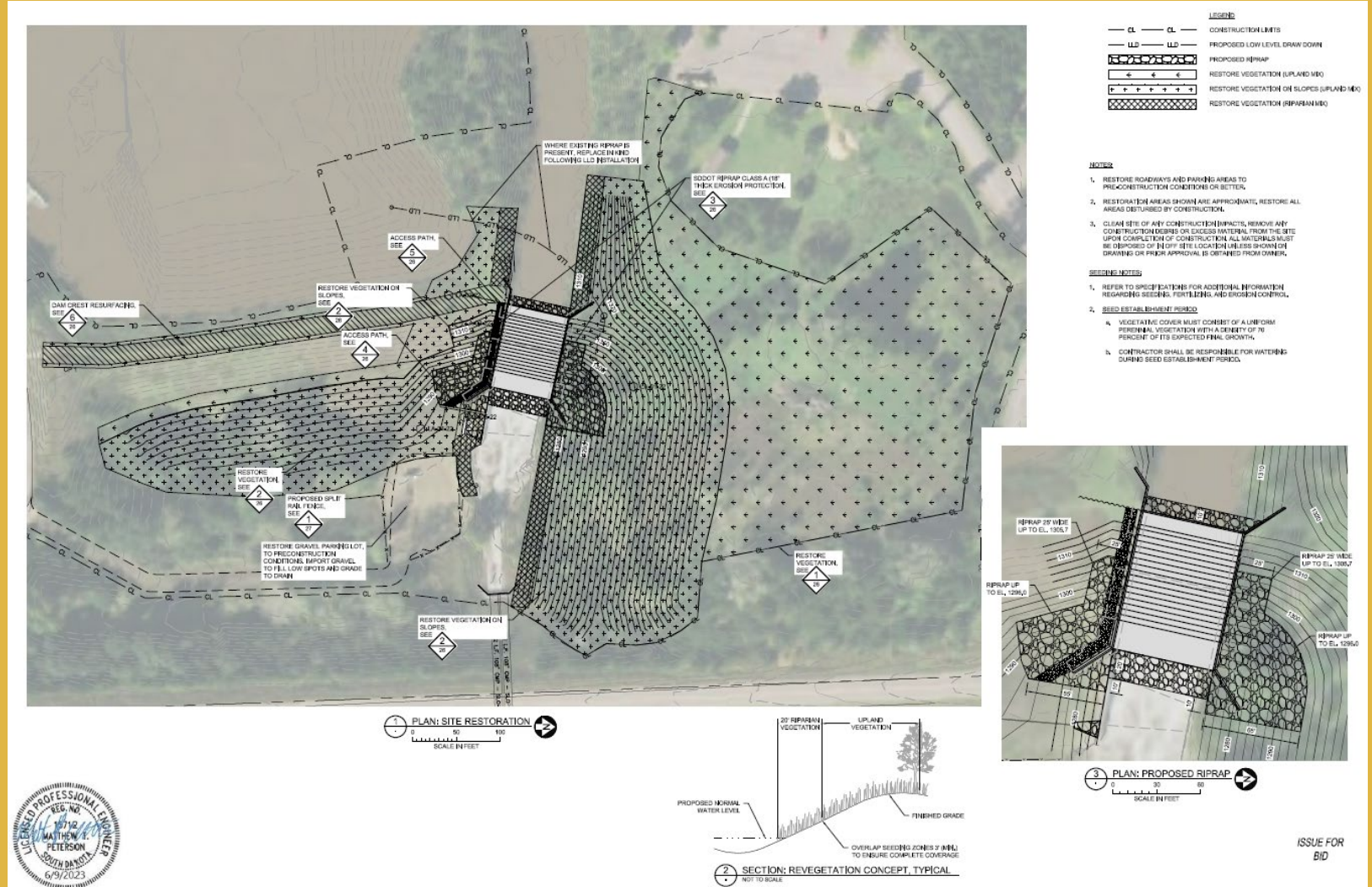


Lake Alvin Recreation Area Spillway Replacement



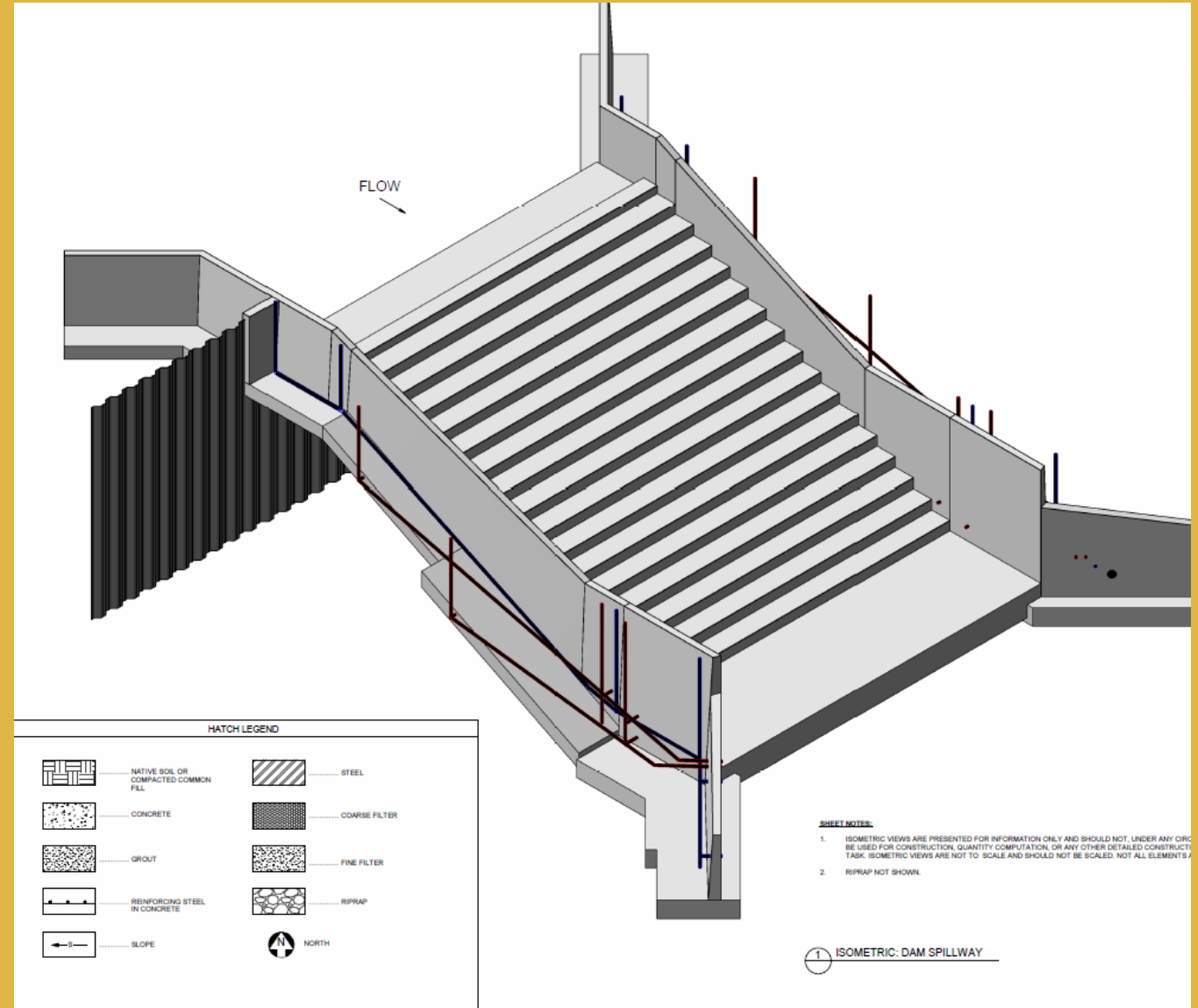
Lake Alvin Scope of Work

- Spillway Removal/Replacement
- Regrade Left Slope (North)
- Erosion Protection
- Downstream Embankment Buttress Installation
- Embankment Crest Levelling
- Low Level Outlet Installation



Lake Alvin New Spillway

- 70' Wide Stepped Chute Spillway
 - 2'x4' steps
- Modern Filter and drain system
- Sheet-pile Cutoff Wall



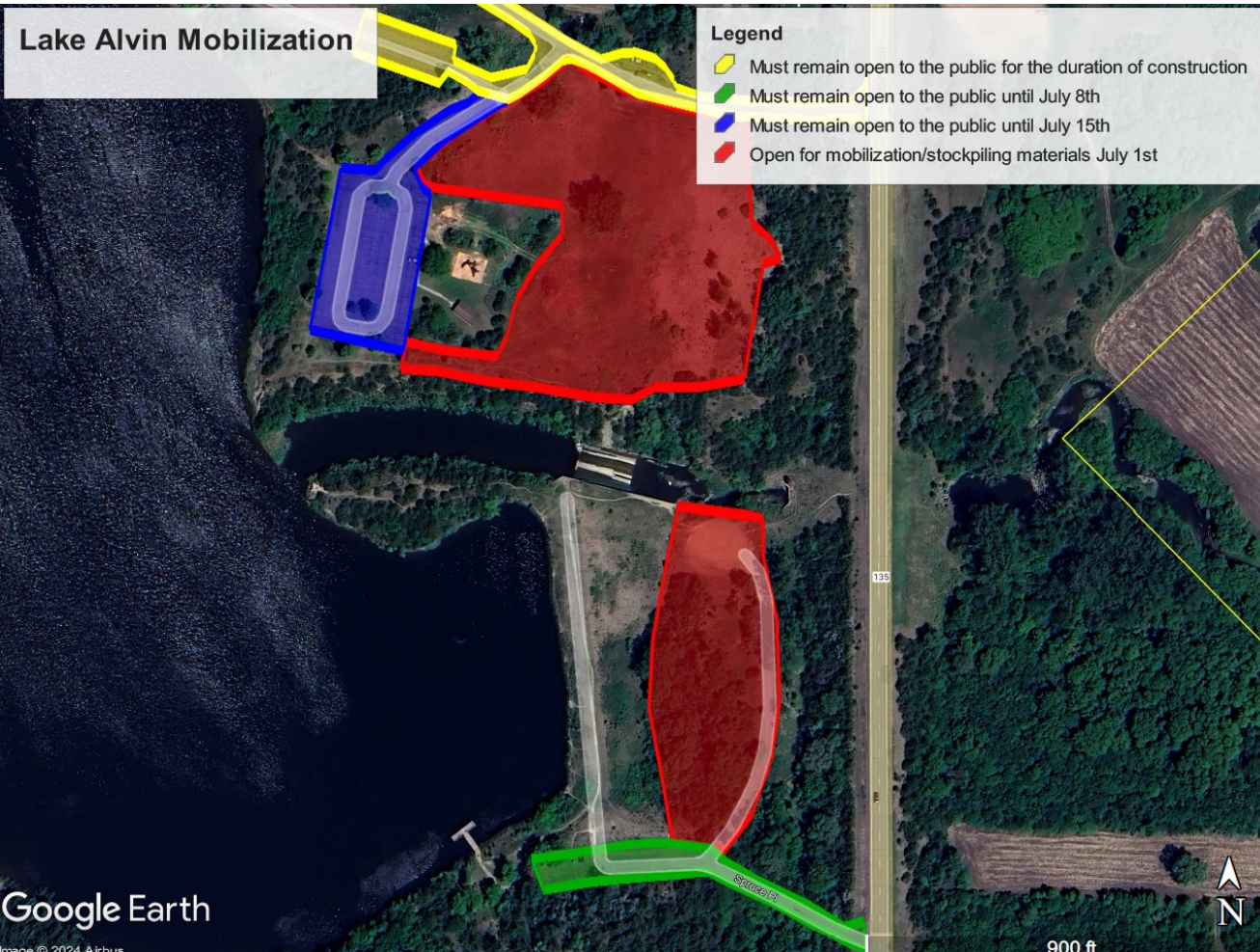
Lake Alvin Spillway Replacement Schedule

July 2024 - May 2025

- Erosion Control
- Lake drawdown
- Slope Grading
- Spillway removal
- Spillway shape/form
- Spillway concrete
- Final grading
- Seeding
- Substantial Completion
 - March 1st, 2025
- Final Completion
 - May 1st, 2025



Lake Alvin Spillway Replacement Impacts

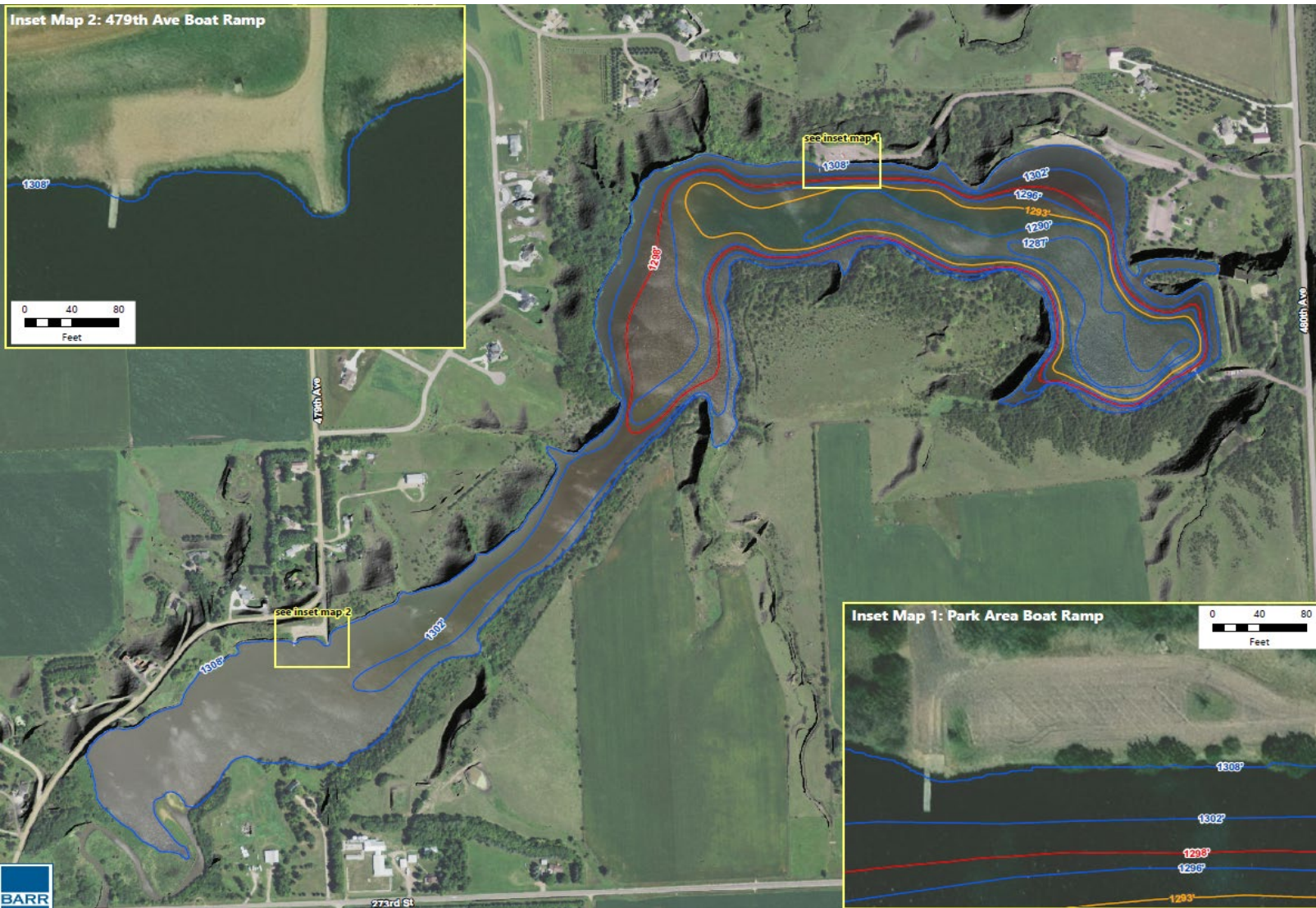


- Recreation Area Impacts

- Boat ramps to be closed on July 15th
- Swim beach area intended to be closed to perform a large renovation project on July 15th.
- Trails to remain open/accessible
- Picnic and playground area to be closed July 15th



Lake Alvin Elevation Contours



- Spillway elevation 1308'
- Minimum drawdown 1298'
- Maximum drawdown 1293'

Lake Alvin Spillway Replacement Impacts

- Lake Alvin Fisheries Impacts
 - Potential fish kill
 - Low level outlet for maintenance and fisheries management
 - Minimal expected shoreline vegetation response to the drawdown



Lake Alvin Recreation Area

- Return to spillway elevations- expected to occur in the spring of 2025
- Re-open beach area to the public in May 2025
- Boat ramps back open and in service in May 2025



Lake Alvin Beach Area



Lake Alvin Beach Area



Lake Alvin Beach Area



Questions ??

