

# **EAST RIVER FIREARM DEER**

There were 34,064 licenses issued for the 2022 East River Firearm Deer season (26,183 regular, 499 Special Buck and 7,382 Landowner Own Land Only) for a total of 39,347 tags.

The East River season was open 16 days from November 19 through December 4 in all units. The season was also open from December 10-18 for all unfilled antlerless deer tags.

All hunters that listed an email address were surveyed using Survey123 Software for the regular East River season, the East River Special Buck season, and the Landowner Own Land Only licenses. Final response rates were 48% for regular East River Deer, 35% for Landowner Own Land, and 62% for Special Buck.

Respondents reported hunting an average of 3.91 days per hunter for the regular season, 4.53 days for Landowner Own Land and 5.05 days for Special Buck, resulting in a projected total of 138,381 recreation days for the entire East River season. Regular East River season hunters reported harvesting approximately 89% of their deer from November 19 – December 4, and 11% from December 10-18.

The East River projected deer harvest was 14,406 for the regular season, 4,637 for Landowner Own Land, and 319 for the Special Buck season. Success rates were 53% for the regular season, 40% for Landowner Own Land, and 64% for Special Buck.

The mean satisfaction score for those responding to the regular East River survey was 4.87 (1 = “very dissatisfied” and 7 = “very satisfied”).

Summary comparison of the 2013-2022 East River Deer seasons (including Special Buck and Landowner)

| YEAR | Licenses Sold |        |        |       | Harvest |      |        |      | Total Harvest | Success | Avg Days | Avg Satis |
|------|---------------|--------|--------|-------|---------|------|--------|------|---------------|---------|----------|-----------|
|      | Resident      |        | Nonres |       | Bucks   |      | Does   |      |               |         |          |           |
|      | Lics          | Tags   | Lics   | Tags  | WT      | Mule | WT     | Mule |               |         |          |           |
| 2013 | 37,137        | 56,030 | 1,366  | 2,715 | 10,733  | 278  | 10,592 | 256  | 21,858        | 37%     | 4.44     | 4.19      |
| 2014 | 31,037        | 37,835 | 912    | 1,326 | 12,213  | 376  | 6,673  | 86   | 19,347        | 49%     | 4.10     | 4.80      |
| 2015 | 32,287        | 40,420 | 836    | 1,276 | 13,060  | 369  | 7,331  | 104  | 20,866        | 50%     | 4.15     | 4.96      |
| 2016 | 31,048        | 44,311 | 759    | 1,595 | 10,659  | 359  | 7,972  | 117  | 19,107        | 42%     | 4.16     | 4.70      |
| 2017 | 31,501        | 39,556 | 830    | 1,313 | 11,636  | 312  | 6,446  | 96   | 18,489        | 45%     | 4.40     | 4.86      |
| 2018 | 31,791        | 39,926 | 718    | 1,143 | 11,329  | 348  | 6,616  | 95   | 18,388        | 45%     | 4.36     | 4.86      |
| 2019 | 33,353        | 39,891 | 526    | 538   | 10,015  | 280  | 6,142  | 66   | 16,503        | 41%     | 4.15     | 4.77      |
| 2020 | 33,816        | 40,884 | 437    | 451   | 11,801  | 339  | 7,066  | 59   | 19,265        | 47%     | 4.56     | 5.30      |
| 2021 | 33,836        | 39,740 | 257    | 257   | 11,759  | 243  | 6,150  | 30   | 18,182        | 45%     | 4.43     | 5.01      |
| 2022 | 33,722        | 38,962 | 342    | 385   | 12,819  | 278  | 6,204  | 61   | 19,362        | 49%     | 4.21     | 4.87      |

## **2022 East River Deer Antlerless Harvest by Date**

|                  | Total | Nov 19 - Dec 4 | Dec 10 - 18 |
|------------------|-------|----------------|-------------|
| Reports          | 2,446 | 2,178          | 268         |
| Percent of total |       | 89%            | 11%         |
| Projected        | 5,234 | 4,661          | 574         |

# 2022 East River Deer Harvest Projections

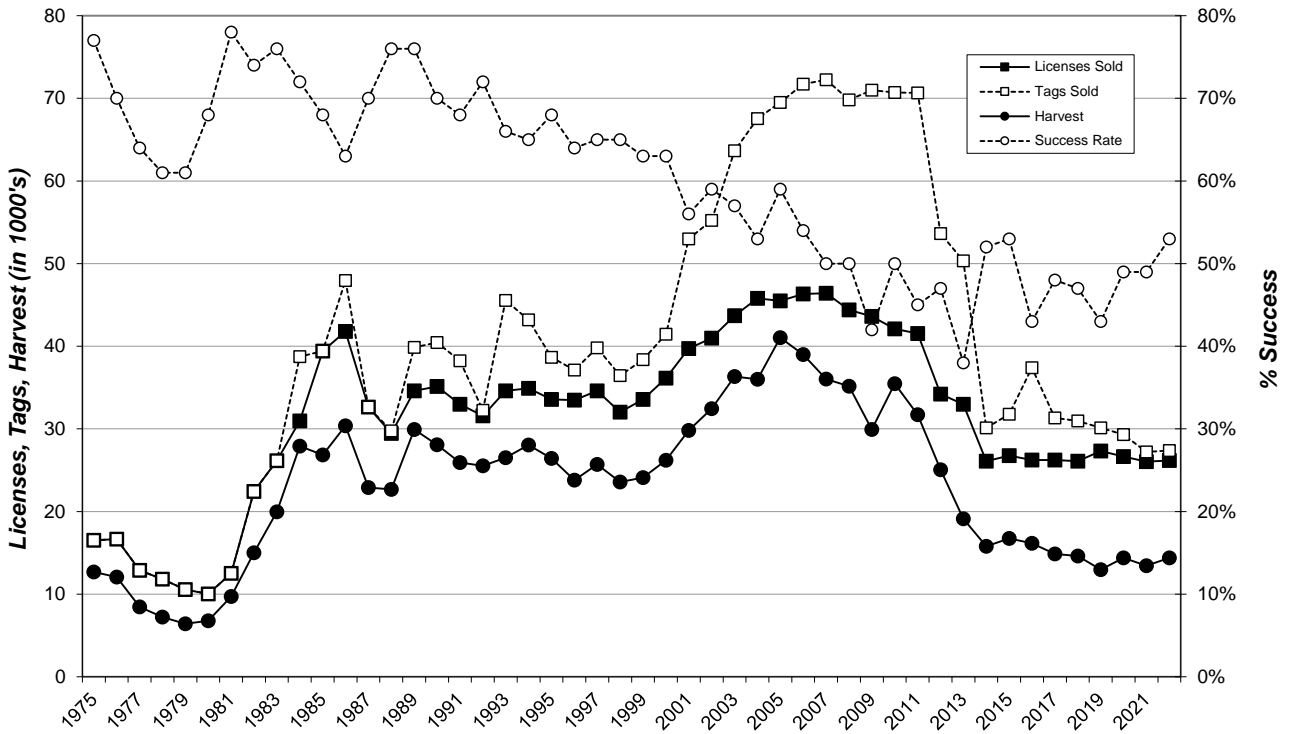
| Unit/Type | Licenses  |        |      |             |      |           | Harvest Projections |                 |         |                | Harvest Projections |            |            |            | Total Deer  |            |            |            |         |          |
|-----------|-----------|--------|------|-------------|------|-----------|---------------------|-----------------|---------|----------------|---------------------|------------|------------|------------|-------------|------------|------------|------------|---------|----------|
|           | Resident  |        |      | Nonresident |      |           | Whitetail           |                 |         |                | Mule Deer           |            |            |            |             |            |            |            |         |          |
|           | Appl. 1st | Avail. | Sold | Avail.      | Sold | Tags sold | Response Rate       | Success 1st tag | 2nd tag | Hunter Success | Bucks Adult         | Fawn Adult | Does Adult | Fawn Adult | Bucks Adult | Fawn Adult | Does Adult | Fawn Adult |         |          |
|           | Choice *  |        |      |             |      |           |                     |                 |         |                |                     |            |            |            |             |            |            |            | Harvest | CI (95%) |
| 01A-01    | 763       | 400    | 397  | leftovers   | 1    | 398       | 53%                 | 57%             |         | 57%            | 182                 | 4          | 39         | 2          | 0           | 0          | 0          | 0          | 226     | +/-19    |
| 01A-13    | 67        | 200    | 200  | leftovers   | 0    | 200       | 49%                 | 45%             |         | 45%            | 0                   | 13         | 73         | 4          | 0           | 0          | 0          | 0          | 90      | +/-14    |
| 03A-01    | 1,526     | 1,000  | 997  | leftovers   | 0    | 997       | 50%                 | 56%             |         | 56%            | 478                 | 6          | 74         | 4          | 0           | 0          | 0          | 0          | 562     | +/-32    |
| 03A-13    | 44        | 1,000  | 964  | leftovers   | 30   | 994       | 37%                 | 42%             |         | 47%            | 0                   | 16         | 412        | 34         | 0           | 0          | 0          | 0          | 462     | +/-39    |
| 04A-11    | 933       | 500    | 497  | leftovers   | 1    | 498       | 45%                 | 56%             |         | 56%            | 255                 | 0          | 20         | 5          | 0           | 0          | 0          | 0          | 280     | +/-24    |
| 04A-13    | 37        | 300    | 299  | leftovers   | 0    | 299       | 41%                 | 44%             |         | 44%            | 0                   | 5          | 111        | 15         | 0           | 0          | 0          | 0          | 131     | +/-21    |
| 05A-01    | 619       | 350    | 351  | leftovers   | 0    | 351       | 54%                 | 61%             |         | 61%            | 201                 | 0          | 12         | 0          | 0           | 0          | 0          | 0          | 213     | +/-17    |
| 05A-19    | 52        | 200    | 200  | leftovers   | 0    | 200       | 50%                 | 55%             | 37%     | 55%            | 0                   | 24         | 135        | 24         | 0           | 0          | 0          | 0          | 184     | +/-28    |
| 06A-01    | 826       | 450    | 449  | leftovers   | 0    | 449       | 58%                 | 57%             |         | 57%            | 231                 | 0          | 21         | 5          | 0           | 0          | 0          | 0          | 257     | +/-18    |
| 06A-13    | 81        | 100    | 100  | leftovers   | 0    | 100       | 48%                 | 48%             |         | 48%            | 0                   | 2          | 39         | 7          | 0           | 0          | 0          | 0          | 48      | +/-11    |
| 07A-01    | 471       | 350    | 345  | leftovers   | 0    | 345       | 55%                 | 48%             |         | 48%            | 141                 | 2          | 22         | 0          | 0           | 0          | 0          | 0          | 165     | +/-16    |
| 07B-19    | 23        | 75     | 75   | leftovers   | 0    | 150       | 62%                 | 47%             | 16%     | 47%            | 0                   | 7          | 35         | 5          | 0           | 0          | 0          | 0          | 47      | +/-13    |
| 08A-11    | 352       | 200    | 200  | leftovers   | 0    | 200       | 53%                 | 57%             |         | 57%            | 96                  | 2          | 15         | 0          | 0           | 0          | 0          | 0          | 113     | +/-13    |
| 10A-11    | 585       | 250    | 251  | leftovers   | 0    | 251       | 48%                 | 59%             |         | 59%            | 138                 | 2          | 8          | 0          | 0           | 0          | 0          | 0          | 148     | +/-16    |
| 10A-13    | 22        | 150    | 150  | leftovers   | 0    | 150       | 39%                 | 54%             |         | 54%            | 0                   | 5          | 67         | 8          | 0           | 0          | 0          | 0          | 80      | +/-15    |
| 12A-01    | 421       | 300    | 295  | leftovers   | 0    | 295       | 52%                 | 56%             |         | 56%            | 130                 | 4          | 31         | 0          | 0           | 0          | 0          | 0          | 165     | +/-16    |
| 12B-13    | 8         | 50     | 50   | leftovers   | 0    | 50        | 58%                 | 32%             |         | 32%            | 0                   | 0          | 14         | 2          | 0           | 0          | 0          | 0          | 16      | +/-6     |
| 12B-19    | 13        | 25     | 25   | leftovers   | 0    | 50        | 28%                 | 57%             | 43%     | 57%            | 0                   | 4          | 21         | 0          | 0           | 0          | 0          | 0          | 25      | +/-16    |
| 13A-01    | 329       | 100    | 102  | leftovers   | 0    | 102       | 45%                 | 47%             |         | 47%            | 32                  | 0          | 0          | 0          | 16          | 0          | 0          | 0          | 48      | +/-11    |
| 13A-11    | 256       | 800    | 796  | leftovers   | 0    | 796       | 45%                 | 46%             |         | 46%            | 308                 | 2          | 59         | 0          | 0           | 0          | 0          | 0          | 369     | +/-31    |
| 13A-13P   | 5         | 100    | 94   | leftovers   | 6    | 100       | 45%                 | 33%             |         | 31%            | 0                   | 2          | 21         | 2          | 0           | 0          | 0          | 0          | 25      | +/-9     |
| 13L-01    | 101       | 20     | 21   | leftovers   | 1    | 22        | 73%                 | 69%             |         | 69%            | 8                   | 0          | 0          | 0          | 6           | 0          | 1          | 0          | 15      | +/-2     |
| 14A-01    | 110       | 100    | 99   | leftovers   | 0    | 99        | 56%                 | 50%             |         | 50%            | 20                  | 0          | 5          | 0          | 24          | 0          | 0          | 0          | 49      | +/-9     |
| 14A-11    | 34        | 250    | 248  | leftovers   | 0    | 248       | 37%                 | 46%             |         | 49%            | 114                 | 3          | 8          | 0          | 0           | 0          | 0          | 0          | 124     | +/-20    |
| 16A-01    | 114       | 30     | 30   | leftovers   | 0    | 30        | 52%                 | 67%             |         | 67%            | 6                   | 0          | 2          | 0          | 10          | 0          | 2          | 0          | 20      | +/-5     |
| 16A-11    | 302       | 400    | 399  | leftovers   | 0    | 399       | 47%                 | 43%             |         | 43%            | 150                 | 2          | 15         | 4          | 0           | 0          | 0          | 0          | 172     | +/-21    |
| 16A-13    | 3         | 100    | 100  | leftovers   | 0    | 100       | 33%                 | 21%             |         | 28%            | 0                   | 0          | 24         | 2          | 0           | 0          | 0          | 0          | 27      | +/-12    |
| 17A-01    | 325       | 50     | 51   | leftovers   | 0    | 51        | 60%                 | 47%             |         | 47%            | 22                  | 0          | 2          | 0          | 0           | 0          | 0          | 0          | 24      | +/-6     |
| 17A-11    | 441       | 250    | 251  | leftovers   | 0    | 251       | 55%                 | 55%             |         | 55%            | 127                 | 4          | 4          | 4          | 0           | 0          | 0          | 0          | 139     | +/-14    |
| 17A-13    | 19        | 100    | 100  | leftovers   | 0    | 100       | 53%                 | 42%             |         | 42%            | 0                   | 6          | 35         | 2          | 0           | 0          | 0          | 0          | 42      | +/-9     |
| 18A-01    | 845       | 600    | 599  | leftovers   | 1    | 600       | 50%                 | 56%             |         | 56%            | 310                 | 0          | 27         | 0          | 0           | 0          | 0          | 0          | 337     | +/-24    |
| 18A-19    | 45        | 200    | 200  | leftovers   | 0    | 400       | 44%                 | 59%             | 26%     | 59%            | 0                   | 18         | 138        | 14         | 0           | 0          | 0          | 0          | 170     | +/-31    |
| 19A-01    | 372       | 250    | 250  | leftovers   | 0    | 250       | 57%                 | 40%             |         | 40%            | 84                  | 0          | 13         | 2          | 0           | 0          | 0          | 0          | 99      | +/-14    |
| 19A-13    | 19        | 100    | 100  | leftovers   | 0    | 100       | 54%                 | 32%             |         | 32%            | 0                   | 6          | 26         | 0          | 0           | 0          | 0          | 0          | 32      | +/-9     |
| 22A-01    | 1,033     | 600    | 600  | leftovers   | 1    | 601       | 47%                 | 52%             |         | 52%            | 277                 | 6          | 26         | 4          | 0           | 0          | 0          | 0          | 313     | +/-26    |
| 22A-13    | 19        | 400    | 394  | leftovers   | 0    | 394       | 44%                 | 41%             |         | 41%            | 0                   | 16         | 140        | 5          | 0           | 0          | 0          | 0          | 161     | +/-22    |
| 23A-01    | 590       | 500    | 498  | leftovers   | 2    | 500       | 47%                 | 52%             |         | 52%            | 218                 | 7          | 29         | 4          | 0           | 0          | 0          | 0          | 258     | +/-24    |
| 23A-19    | 38        | 200    | 200  | leftovers   | 0    | 400       | 46%                 | 43%             | 26%     | 43%            | 0                   | 25         | 94         | 18         | 0           | 0          | 0          | 0          | 137     | +/-29    |
| 25A-11    | 246       | 250    | 250  | leftovers   | 0    | 250       | 55%                 | 48%             |         | 48%            | 106                 | 2          | 12         | 0          | 0           | 0          | 0          | 0          | 119     | +/-15    |
| 25A-13    | 6         | 100    | 99   | leftovers   | 1    | 100       | 43%                 | 40%             |         | 40%            | 0                   | 7          | 29         | 5          | 0           | 0          | 0          | 0          | 41      | +/-11    |
| 26A-01    | 771       | 700    | 698  | leftovers   | 1    | 699       | 46%                 | 61%             |         | 61%            | 370                 | 7          | 42         | 4          | 4           | 0          | 0          | 0          | 427     | +/-28    |
| 26A-13    | 23        | 400    | 396  | leftovers   | 12   | 398       | 35%                 | 56%             |         | 62%            | 0                   | 9          | 241        | 11         | 0           | 0          | 0          | 0          | 260     | +/-24    |
| 28A-01    | 617       | 600    | 596  | leftovers   | 1    | 597       | 43%                 | 63%             |         | 63%            | 326                 | 2          | 36         | 10         | 5           | 0          | 0          | 0          | 378     | +/-27    |
| 28A-13    | 10        | 400    | 341  | leftovers   | 62   | 403       | 37%                 | 52%             |         | 58%            | 0                   | 6          | 185        | 37         | 0           | 0          | 0          | 0          | 228     | +/-23    |
| 29A-01    | 592       | 400    | 402  | leftovers   | 0    | 402       | 51%                 | 59%             |         | 59%            | 192                 | 4          | 36         | 4          | 0           | 0          | 0          | 0          | 236     | +/-19    |
| 29A-19    | 70        | 100    | 100  | leftovers   | 0    | 200       | 42%                 | 55%             | 38%     | 55%            | 0                   | 24         | 57         | 12         | 0           | 0          | 0          | 0          | 93      | +/-23    |
| 32A-01    | 676       | 600    | 601  | leftovers   | 0    | 601       | 47%                 | 52%             |         | 52%            | 285                 | 2          | 43         | 0          | 0           | 0          | 0          | 0          | 310     | +/-26    |
| 32A-19    | 43        | 200    | 200  | leftovers   | 0    | 400       | 47%                 | 58%             | 29%     | 58%            | 0                   | 26         | 139        | 9          | 0           | 0          | 0          | 0          | 174     | +/-30    |
| 33A-01    | 172       | 10     | 10   | leftovers   | 0    | 10        | 40%                 | 25%             |         | 25%            | 3                   | 0          | 0          | 0          | 0           | 0          | 0          | 0          | 3       | +/-3     |
| 33A-11    | 483       | 300    | 296  | leftovers   | 0    | 296       | 56%                 | 61%             |         | 61%            | 168                 | 0          | 9          | 2          | 0           | 0          | 0          | 0          | 179     | +/-15    |
| 34A-11    | 332       | 200    | 200  | leftovers   | 0    | 200       | 48%                 | 62%             |         | 62%            | 111                 | 0          | 13         | 0          | 0           | 0          | 0          | 0          | 123     | +/-14    |
| 36A-01    | 326       | 150    | 150  | leftovers   | 0    | 150       | 63%                 | 61%             |         | 61%            | 43                  | 0          | 3          | 0          | 43          | 0          | 2          | 0          | 91      | +/-9     |
| 36A-11    | 235       | 250    | 248  | leftovers   | 1    | 249       | 55%                 | 57%             |         | 57%            | 125                 | 0          | 15         | 2          | 0           | 0          | 0          | 0          | 142     | +/-14    |
| 37A-11    | 402       | 200    | 200  | leftovers   | 0    | 200       | 54%                 | 60%             |         | 60%            | 99                  | 4          | 17         | 0          | 0           | 0          | 0          | 0          | 120     | +/-13    |
| 38A-01    | 86        | 10     | 10   | leftovers   | 0    | 10        | 60%                 | 50%             |         | 50%            | 3                   | 0          | 2          | 0          | 0           | 0          | 0          | 0          | 5       | +/-3     |
| 38A-11    | 221       | 300    | 301  | leftovers   | 0    | 301       | 46%                 | 67%             |         | 67%            | 179                 | 2          | 22         | 0          | 0           | 0          | 0          | 0          | 203     | +/-18    |
| 40A-11    | 394       | 250    | 252  | leftovers   | 0    | 252       | 52%                 | 64%             |         | 64%            | 146                 | 4          | 10         | 2          | 0           | 0          | 0          | 0          | 162     | +/-15    |
| 40A-13    | 9         | 100    | 98   | leftovers   | 1    | 99        | 44%                 | 49%             |         | 49%            | 0                   | 5          | 37         | 7          | 0           | 0          | 0          | 0          | 48      | +/-11    |
| 42A-01    | 858       | 500    | 499  | leftovers   | 2    | 501       | 47%                 | 54%             |         | 54%            | 234                 | 4          | 30         | 0          | 0           | 0          | 0          | 0          | 269     | +/-24    |
| 42A-13    | 51        | 100    | 100  | leftovers   | 0    | 100       | 51%                 | 46%             |         | 46%            | 0                   | 4          | 42         | 0          | 0           | 0          | 0          | 0          | 46      | +/-10    |
| 43A-01    | 640       | 300    | 299  | leftovers   | 0    | 299       | 55%                 | 66%             |         | 66%            | 171                 | 4          | 17         | 2          | 4           | 0          | 0          | 0          | 196     | +/-15    |
| 43A-13    | 40        | 100    | 100  | leftovers   | 0    | 100       | 58%                 | 63%             |         | 63%            | 0                   | 5          | 54         | 4          | 0           | 0          | 0          | 0          | 63      | +/-8     |
| 44A-01    | 451       | 200    | 204  | leftovers   | 0    | 204       | 58%                 | 43%             |         | 43%            | 69                  | 0          | 20         | 0          | 0           | 0          | 0          | 0          | 89      | +/-12    |
| 44A-13    | 45        | 100    | 100  | leftovers   | 0    | 100       | 56%                 | 31%             |         | 31%            | 0                   | 2          | 25         | 4          | 0           | 0          | 0          | 0          | 31      | +/-8     |
| 46A-01    | 663       | 350    | 350  | leftovers   | 0    | 350       | 48%                 | 58%             |         | 58%            | 183                 | 2          | 19         | 0          | 0           | 0          | 0          | 0          | 204     | +/-19    |
| 46A-13    | 47        | 300    | 299  | leftovers   | 1    | 300       | 47%                 | 45%             |         | 45%            | 0                   | 15         | 105        | 15         | 0           | 0          | 0          | 0          | 136     | +/-18    |
| 47A-01    | 754       | 500    | 500  | leftovers   | 0    | 500       | 47%                 | 67%             |         | 67%            | 286                 | 4          | 32         | 6          | 4           | 0          | 0          | 0          | 333     | +/-22    |
| 47A-13    | 21        | 500    | 455  | leftovers   | 43   | 498       | 40%                 | 47%             |         | 53%            | 0                   | 16         | 244        | 26         | 0           | 0          | 0          | 0          | 286     | +/-24    |
| 48A-01    | 724       | 500    | 498  | leftovers   | 1    | 499       | 52%                 | 54%             |         | 54%            | 240                 | 4          | 26         | 2          | 0           | 0          | 0          | 0          | 271     | +/-21    |
| 48A-13    | 8         | 300    | 299  | leftovers   | 0    | 299       | 50%                 | 39%             |         | 42%            | 0                   | 17         | 111        | 9          | 0           | 0          | 0          | 0          | 137     | +/-17    |
| 51A-01    | 553       | 400    | 397  | leftovers   | 1    | 398       | 47%                 | 57%             |         | 57%            | 202                 | 0          | 22         | 2          | 2           | 0          | 0          | 0          | 228     | +/-21    |
| 51A-13    | 41        | 350    | 349  | leftovers   | 0    | 349       | 44%                 | 43%             |         | 44%            | 0                   | 16         | 138        | 2          | 0           | 0          | 0          | 0          | 156     | +/-21    |
| 52A-01    | 532       | 300    | 300  | leftovers   | 0    | 300       | 52%                 | 63%             |         | 63%            | 160                 | 0          | 29         | 0          | 0           | 0          | 0          | 0          | 189     | +/-16    |
| 52A-13    | 32        | 150    | 151  | leftovers   | 0    | 151       | 48%                 | 52%             |         | 52%            | 0                   | 0          | 72         | 6          | 0           | 0          | 0          | 0          | 78      | +/-13    |
| 54A-01    | 220       | 100    | 99   | leftovers   | 0    | 99        | 48%                 | 76%             |         | 76%            | 41                  | 0          | 2          | 0          | 28          | 0          | 4          | 0          | 75      | +/-9     |
| 54A-11    | 345       | 350    | 348  | leftovers   | 0    | 348       | 53%                 | 54%             |         | 54%            | 165                 | 0          | 19         | 2          | 0           | 0          | 0          | 0          | 186     | +/-17    |
| 55A-01    | 758       | 500    | 500  | leftovers   | 0    | 500       | 53%                 | 59%             |         | 59%            | 246                 | 6          | 37         | 6          | 0           | 0          | 0          | 0          | 294     | +/-21    |
| 55A-19    | 45        | 200    | 199  | leftovers   | 1    | 400       | 42%                 | 63%             | 27%     | 63%            | 0                   | 27         | 141        | 12         | 0           | 0          | 0          | 0          | 180     | +/-33    |
| 56A-11    | 432       | 350    | 350  | leftovers   | 0    | 350       | 52%                 | 63%             |         | 63%            |                     |            |            |            |             |            |            |            |         |          |

(continued from previous page)

| Unit/Type     | Licenses           |               |               |                  |            |               | Harvest Projections |                 |                 |                | Harvest Projections |            |              |            | Total Deer |          |          |          |               |                 |
|---------------|--------------------|---------------|---------------|------------------|------------|---------------|---------------------|-----------------|-----------------|----------------|---------------------|------------|--------------|------------|------------|----------|----------|----------|---------------|-----------------|
|               | Resident           |               |               | Nonresident      |            |               | Whitetail           |                 | Mule Deer       |                | Harvest             | CI (95%)   |              |            |            |          |          |          |               |                 |
|               | Appl. 1st Choice * | Avail.        | Sold          | Avail.           | Sold       | Tags sold     | Response Rate       | Success 1st tag | Success 2nd tag | Hunter Success |                     |            | Bucks        | Does       | Bucks      | Does     |          |          |               |                 |
|               |                    |               |               |                  |            |               |                     |                 |                 |                | Adult               | Fawn       | Adult        | Fawn       | Adult      | Fawn     |          |          |               |                 |
| 57A-01        | 885                | 900           | 894           | leftovers        | 1          | 895           | 47%                 | 58%             | 58%             | 58%            | 460                 | 2          | 48           | 7          | 2          | 0        | 0        | 0        | 519           | +/-31           |
| 57A-13        | 17                 | 200           | 201           | leftovers        | 0          | 201           | 38%                 | 50%             | 50%             | 52%            | 0                   | 5          | 89           | 7          | 0          | 0        | 0        | 0        | 101           | +/-18           |
| 59A-01        | 392                | 100           | 94            | leftovers        | 0          | 94            | 48%                 | 53%             | 53%             | 53%            | 13                  | 0          | 0            | 0          | 37         | 0        | 0        | 0        | 50            | +/-10           |
| 59A-11        | 135                | 250           | 244           | leftovers        | 0          | 244           | 51%                 | 41%             | 41%             | 41%            | 89                  | 2          | 8            | 0          | 0          | 0        | 0        | 0        | 99            | +/-15           |
| 59B-01        | 84                 | 20            | 21            | leftovers        | 0          | 21            | 42%                 | 50%             | 50%             | 50%            | 8                   | 0          | 0            | 0          | 3          | 0        | 0        | 0        | 11            | +/-6            |
| 59B-11        | 139                | 300           | 299           | leftovers        | 0          | 299           | 50%                 | 48%             | 48%             | 48%            | 130                 | 0          | 12           | 0          | 0          | 0        | 0        | 0        | 142           | +/-17           |
| 61A-01        | 334                | 150           | 150           | leftovers        | 0          | 150           | 58%                 | 48%             | 48%             | 48%            | 60                  | 0          | 11           | 2          | 0          | 0        | 0        | 0        | 72            | +/-10           |
| 62A-01        | 445                | 350           | 347           | leftovers        | 0          | 347           | 54%                 | 52%             | 52%             | 52%            | 148                 | 6          | 23           | 4          | 0          | 0        | 0        | 0        | 180           | +/-17           |
| 62A-13        | 34                 | 100           | 100           | leftovers        | 0          | 100           | 48%                 | 47%             | 47%             | 47%            | 0                   | 2          | 40           | 4          | 0          | 0        | 0        | 0        | 47            | +/-10           |
| 63A-01        | 182                | 50            | 51            | leftovers        | 0          | 51            | 51%                 | 64%             | 64%             | 64%            | 12                  | 0          | 0            | 0          | 20         | 0        | 0        | 0        | 33            | +/-7            |
| 63A-11        | 347                | 400           | 399           | leftovers        | 1          | 400           | 51%                 | 54%             | 54%             | 54%            | 195                 | 2          | 16           | 2          | 0          | 0        | 0        | 0        | 215           | +/-20           |
| 63A-13        | 8                  | 100           | 99            | leftovers        | 0          | 99            | 37%                 | 50%             | 50%             | 51%            | 0                   | 0          | 49           | 3          | 0          | 0        | 0        | 0        | 51            | +/-13           |
| <b>Totals</b> | <b>27,849</b>      | <b>26,240</b> | <b>26,010</b> | <b>leftovers</b> | <b>173</b> | <b>27,383</b> | <b>48.0%</b>        |                 |                 | <b>54%</b>     | <b>8,964</b>        | <b>447</b> | <b>4,367</b> | <b>411</b> | <b>208</b> | <b>0</b> | <b>9</b> | <b>0</b> | <b>14,406</b> | <b>+/-1,559</b> |

\* Number of 1st drawing applicants with that season as 1st choice.

### East River Deer Regular Season 1975-2022 (does not include Special Buck or Landowner Own Land)



## 2022 East River Landowner Own Land Harvest Projections

Last Revised: 25-Apr-23

| Unit          | Harvest Projections |              |                      |            |               |               |                |             |              |           |              |            |           |          |           |          |              | Total Deer Harvest | Mean Satisfactn Rating | Average Days Hunted |
|---------------|---------------------|--------------|----------------------|------------|---------------|---------------|----------------|-------------|--------------|-----------|--------------|------------|-----------|----------|-----------|----------|--------------|--------------------|------------------------|---------------------|
|               | Resident Licenses   |              | Nonresident Licenses |            | Tags sold     | Response Rate | Hunter Success | Tag Success | Whitetail    |           |              |            | Mule Deer |          |           |          |              |                    |                        |                     |
|               | Avail.              | Sold         | Avail.               | Sold       |               |               |                |             | Bucks        |           | Does         |            | Bucks     |          | Does      |          |              |                    |                        |                     |
| Adult         | Fawn                | Adult        | Fawn                 | Adult      | Fawn          | Adult         | Fawn           | Adult       | Fawn         | Adult     | Fawn         | Adult      | Fawn      |          |           |          |              |                    |                        |                     |
| ER1-01        | Unltd               | 3,172        | 250                  | 127        | 3,299         | 38%           | 42%            | 42%         | 1,251        | 9         | 94           | 3          | 23        | 0        | 3         | 3        | 1,384        | -                  | -                      |                     |
| ER1-08        | Unltd               | 4,041        |                      | 42         | 8,166         | 33%           | 58%            | 40%         | 1,776        | 86        | 1,206        | 111        | 25        | 3        | 38        | 6        | 3,252        | -                  | -                      |                     |
| <b>Totals</b> |                     | <b>7,213</b> | <b>250</b>           | <b>169</b> | <b>11,465</b> | <b>35.4%</b>  | <b>50%</b>     | <b>40%</b>  | <b>3,027</b> | <b>94</b> | <b>1,300</b> | <b>114</b> | <b>48</b> | <b>3</b> | <b>41</b> | <b>9</b> | <b>4,637</b> | <b>5.10</b>        | <b>4.53</b>            |                     |

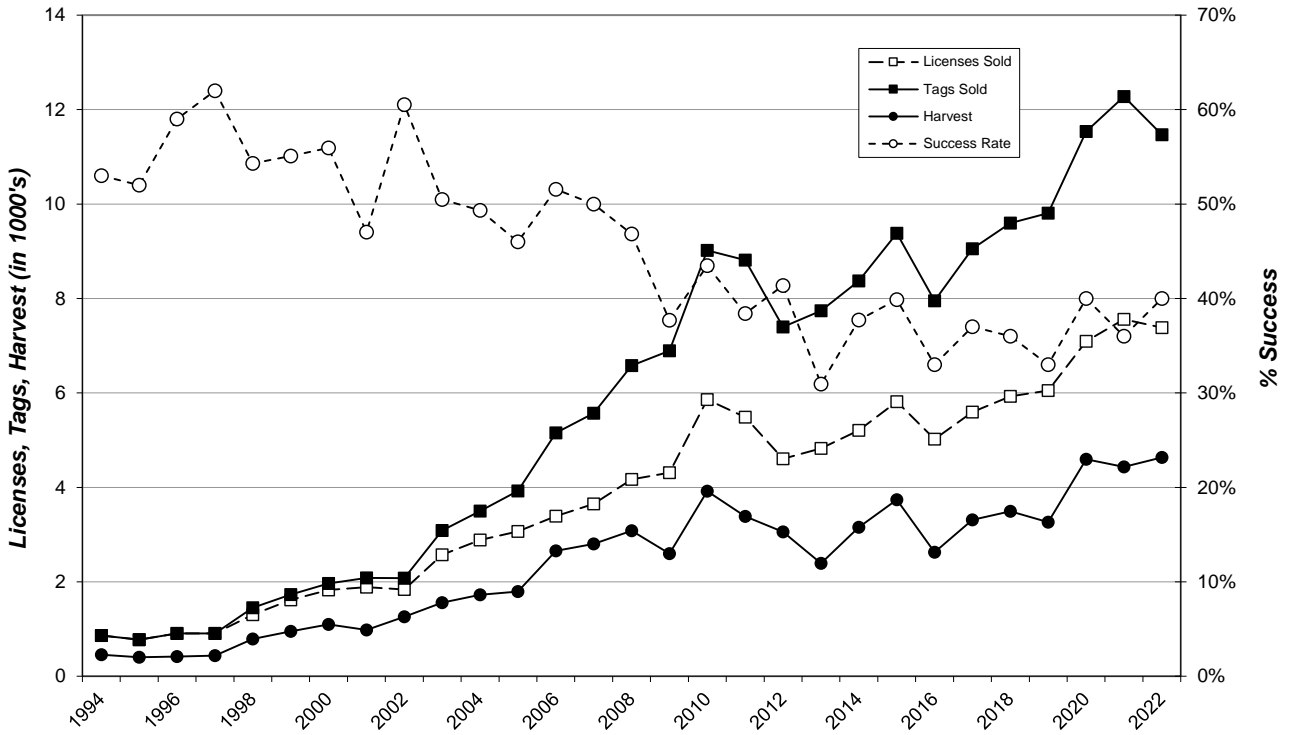
## 2022 East River LOL Harvest Distribution

Last Revised:  
25-Apr-23

| Unit              | Projected Harvest |           |              |            |           |          |           |          |              |          | Total Estimate | % |
|-------------------|-------------------|-----------|--------------|------------|-----------|----------|-----------|----------|--------------|----------|----------------|---|
|                   | Whitetail         |           |              |            | Mule Deer |          |           |          | Total        |          |                |   |
|                   | Bucks             |           | Does         |            | Bucks     |          | Does      |          | Estimate     | %        |                |   |
| Adult             | Fawn              | Adult     | Fawn         | Adult      | Fawn      | Adult    | Fawn      | Adult    | Fawn         | Estimate | %              |   |
| 01A (Minnehaha)   | 100               | 0         | 50           | 10         | 0         | 0        | 0         | 0        | 0            | 160      | 3.5%           |   |
| 03A (Brown)       | 61                | 3         | 25           | 0          | 0         | 0        | 0         | 0        | 0            | 89       | 1.9%           |   |
| 04A (Beadle)      | 194               | 9         | 44           | 13         | 3         | 0        | 0         | 3        | 0            | 266      | 5.7%           |   |
| 05A (Codington)   | 91                | 6         | 38           | 3          | 0         | 0        | 0         | 0        | 0            | 138      | 3.0%           |   |
| 06A (Brookings)   | 103               | 0         | 44           | 0          | 3         | 0        | 0         | 0        | 0            | 150      | 3.2%           |   |
| 07A (Yankton)     | 42                | 3         | 28           | 6          | 0         | 0        | 0         | 0        | 0            | 80       | 1.7%           |   |
| 08A (Davison)     | 58                | 0         | 16           | 3          | 0         | 0        | 0         | 0        | 0            | 77       | 1.7%           |   |
| 10A (Aurora)      | 121               | 3         | 47           | 3          | 0         | 0        | 0         | 0        | 0            | 175      | 3.8%           |   |
| 12A (Bon Homme)   | 55                | 3         | 38           | 6          | 0         | 0        | 0         | 0        | 0            | 102      | 2.2%           |   |
| 13A (Brule)       | 70                | 0         | 6            | 6          | 6         | 0        | 6         | 0        | 0            | 95       | 2.0%           |   |
| 14A (Buffalo)     | 27                | 0         | 13           | 0          | 0         | 0        | 0         | 0        | 0            | 40       | 0.9%           |   |
| 16A (Campbell)    | 24                | 0         | 3            | 3          | 6         | 0        | 9         | 0        | 0            | 46       | 1.0%           |   |
| 17A (Charles Mix) | 82                | 3         | 32           | 0          | 6         | 0        | 0         | 0        | 0            | 123      | 2.6%           |   |
| 18A (Clark)       | 85                | 3         | 32           | 10         | 0         | 0        | 0         | 0        | 0            | 129      | 2.8%           |   |
| 19A (Clay)        | 27                | 0         | 9            | 0          | 0         | 0        | 0         | 0        | 0            | 37       | 0.8%           |   |
| 22A (Day)         | 73                | 3         | 38           | 3          | 0         | 0        | 0         | 0        | 0            | 117      | 2.5%           |   |
| 23A (Deuel)       | 39                | 3         | 16           | 0          | 0         | 0        | 0         | 0        | 0            | 58       | 1.3%           |   |
| 25A (Douglas)     | 55                | 0         | 9            | 3          | 0         | 0        | 0         | 0        | 0            | 67       | 1.4%           |   |
| 26A (Edmunds)     | 61                | 0         | 38           | 3          | 0         | 0        | 0         | 0        | 0            | 102      | 2.2%           |   |
| 28A (Faulk)       | 55                | 3         | 16           | 0          | 0         | 0        | 0         | 0        | 0            | 73       | 1.6%           |   |
| 29A (Grant)       | 103               | 13        | 54           | 3          | 0         | 0        | 0         | 0        | 0            | 172      | 3.7%           |   |
| 32A (Hamlin)      | 64                | 0         | 47           | 3          | 0         | 0        | 0         | 0        | 0            | 114      | 2.5%           |   |
| 33A (Hand)        | 136               | 3         | 35           | 0          | 3         | 0        | 0         | 0        | 0            | 177      | 3.8%           |   |
| 34A (Hanson)      | 67                | 0         | 28           | 3          | 0         | 0        | 0         | 0        | 0            | 98       | 2.1%           |   |
| 36A (Hughes)      | 21                | 0         | 3            | 3          | 9         | 0        | 3         | 0        | 0            | 40       | 0.9%           |   |
| 37A (Hutchinson)  | 97                | 0         | 50           | 0          | 0         | 0        | 0         | 0        | 0            | 147      | 3.2%           |   |
| 38A (Hyde)        | 27                | 0         | 16           | 0          | 0         | 0        | 0         | 0        | 0            | 43       | 0.9%           |   |
| 40A (Jerauld)     | 70                | 6         | 28           | 0          | 0         | 0        | 0         | 0        | 0            | 104      | 2.3%           |   |
| 42A (Kingsbury)   | 52                | 6         | 35           | 0          | 0         | 0        | 0         | 0        | 0            | 93       | 2.0%           |   |
| 43A (Lake)        | 67                | 0         | 50           | 0          | 0         | 0        | 0         | 0        | 0            | 117      | 2.5%           |   |
| 44A (Lincoln)     | 30                | 0         | 9            | 3          | 0         | 0        | 0         | 0        | 0            | 43       | 0.9%           |   |
| 46A (McCook)      | 91                | 3         | 63           | 3          | 0         | 0        | 0         | 0        | 0            | 160      | 3.5%           |   |
| 47A (McPherson)   | 52                | 0         | 16           | 0          | 0         | 0        | 0         | 0        | 0            | 67       | 1.5%           |   |
| 48A (Marshall)    | 42                | 0         | 44           | 10         | 0         | 0        | 0         | 0        | 0            | 96       | 2.1%           |   |
| 51A (Miner)       | 73                | 0         | 16           | 0          | 0         | 0        | 0         | 0        | 0            | 88       | 1.9%           |   |
| 52A (Moody)       | 39                | 3         | 25           | 6          | 0         | 0        | 0         | 0        | 0            | 74       | 1.6%           |   |
| 54A (Potter)      | 36                | 3         | 9            | 0          | 0         | 0        | 6         | 0        | 0            | 55       | 1.2%           |   |
| 55A (Roberts)     | 170               | 6         | 76           | 0          | 0         | 0        | 0         | 0        | 0            | 252      | 5.4%           |   |
| 56A (Sanborn)     | 118               | 3         | 63           | 0          | 0         | 0        | 6         | 0        | 0            | 191      | 4.1%           |   |
| 57A (Spink)       | 85                | 0         | 50           | 0          | 0         | 0        | 0         | 0        | 0            | 135      | 2.9%           |   |
| 59A (W Sully)     | 12                | 0         | 0            | 0          | 6         | 0        | 0         | 0        | 0            | 18       | 0.4%           |   |
| 59B (E Sully)     | 18                | 0         | 3            | 0          | 3         | 0        | 0         | 0        | 0            | 24       | 0.5%           |   |
| 61A (Turner)      | 58                | 0         | 13           | 0          | 0         | 0        | 0         | 0        | 0            | 70       | 1.5%           |   |
| 62A (Union)       | 39                | 3         | 16           | 0          | 0         | 0        | 0         | 0        | 0            | 58       | 1.3%           |   |
| 63A (Walworth)    | 39                | 0         | 6            | 6          | 3         | 3        | 9         | 6        | 0            | 74       | 1.6%           |   |
| <b>TOTALS</b>     | <b>3,027</b>      | <b>94</b> | <b>1,300</b> | <b>114</b> | <b>48</b> | <b>3</b> | <b>41</b> | <b>9</b> | <b>4,637</b> |          |                |   |

Use these figures for approximations only!

## Landowner Own Land East River Deer 1994-2022



## 2022 East River Special Buck Harvest Projections

Last Revised:  
21-Apr-23

| Unit/Type    | Appl. 1st<br>Choice * | Resident Licenses |      | Response<br>Rate | Tag<br>Success | Harvest Projections |      |       |      |      |   |   |   | Total<br>Deer<br>Harvest | Mean<br>Satisfactn<br>Rating | Average<br>Days<br>Hunted |
|--------------|-----------------------|-------------------|------|------------------|----------------|---------------------|------|-------|------|------|---|---|---|--------------------------|------------------------------|---------------------------|
|              |                       | Whitetail         |      |                  |                | Mule Deer           |      |       |      |      |   |   |   |                          |                              |                           |
|              |                       | Bucks             |      |                  |                | Does                |      | Bucks |      | Does |   |   |   |                          |                              |                           |
| Avail.       | Sold                  | Adult             | Fawn | Adult            | Fawn           | Adult               | Fawn | Adult | Fawn |      |   |   |   |                          |                              |                           |
| <b>ER-01</b> | 1,243                 | 500               | 499  | 62%              | 64%            | 286                 | 2    | 12    | 0    | 18   | 0 | 2 | 0 | 319                      | 4.98                         | 5.05                      |

## 2022 East River Special Buck Harvest Distribution

Last Revised:  
21-Apr-23

| Unit              | Projected Harvest |          |           |          |           |          |          |          |            |    | Estimate | % |
|-------------------|-------------------|----------|-----------|----------|-----------|----------|----------|----------|------------|----|----------|---|
|                   | Whitetail         |          |           |          | Mule Deer |          |          |          | Total      |    |          |   |
|                   | Bucks             |          | Does      |          | Bucks     |          | Does     |          |            |    |          |   |
| Adult             | Fawn              | Adult    | Fawn      | Adult    | Fawn      | Adult    | Fawn     |          |            |    |          |   |
| 01A (Minnehaha)   | 8                 | 0        | 0         | 0        | 0         | 0        | 0        | 0        | 0          | 8  | 2.6%     |   |
| 03A (Brown)       | 10                | 0        | 0         | 0        | 0         | 0        | 0        | 0        | 0          | 10 | 3.1%     |   |
| 04A (Beadle)      | 7                 | 0        | 0         | 0        | 0         | 0        | 0        | 0        | 0          | 7  | 2.1%     |   |
| 05A (Codington)   | 10                | 0        | 2         | 0        | 0         | 0        | 0        | 0        | 0          | 12 | 3.6%     |   |
| 06A (Brookings)   | 16                | 0        | 0         | 0        | 0         | 0        | 0        | 0        | 0          | 16 | 5.2%     |   |
| 07A (Yankton)     | 2                 | 0        | 0         | 0        | 0         | 0        | 0        | 0        | 0          | 2  | 0.5%     |   |
| 08A (Davison)     | 2                 | 0        | 0         | 0        | 0         | 0        | 0        | 0        | 0          | 2  | 0.5%     |   |
| 10A (Aurora)      | 3                 | 0        | 0         | 0        | 0         | 0        | 0        | 0        | 0          | 3  | 1.0%     |   |
| 12A (Bon Homme)   | 7                 | 0        | 0         | 0        | 0         | 0        | 0        | 0        | 0          | 7  | 2.1%     |   |
| 13A (Brule)       | 2                 | 0        | 0         | 0        | 3         | 0        | 0        | 0        | 0          | 5  | 1.5%     |   |
| 14A (Buffalo)     | 2                 | 0        | 0         | 0        | 0         | 0        | 0        | 0        | 0          | 2  | 0.5%     |   |
| 16A (Campbell)    | 5                 | 0        | 0         | 0        | 2         | 0        | 0        | 0        | 0          | 7  | 2.1%     |   |
| 17A (Charles Mix) | 3                 | 0        | 0         | 0        | 2         | 0        | 0        | 0        | 0          | 5  | 1.5%     |   |
| 18A (Clark)       | 13                | 0        | 0         | 0        | 0         | 0        | 0        | 0        | 0          | 13 | 4.1%     |   |
| 19A (Clay)        | 2                 | 0        | 0         | 0        | 0         | 0        | 0        | 0        | 0          | 2  | 0.5%     |   |
| 22A (Day)         | 16                | 0        | 0         | 0        | 0         | 0        | 0        | 0        | 0          | 16 | 5.2%     |   |
| 23A (Deuel)       | 5                 | 0        | 0         | 0        | 0         | 0        | 0        | 0        | 0          | 5  | 1.5%     |   |
| 25A (Douglas)     | 0                 | 0        | 0         | 0        | 0         | 0        | 0        | 0        | 0          | 0  | 0.0%     |   |
| 26A (Edmunds)     | 8                 | 0        | 0         | 0        | 0         | 0        | 0        | 0        | 0          | 8  | 2.6%     |   |
| 28A (Faulk)       | 2                 | 0        | 0         | 0        | 0         | 0        | 0        | 0        | 0          | 2  | 0.5%     |   |
| 29A (Grant)       | 8                 | 0        | 0         | 0        | 0         | 0        | 0        | 0        | 0          | 8  | 2.6%     |   |
| 32A (Hamlin)      | 7                 | 0        | 0         | 0        | 0         | 0        | 0        | 0        | 0          | 7  | 2.1%     |   |
| 33A (Hand)        | 15                | 0        | 2         | 0        | 2         | 0        | 0        | 0        | 0          | 18 | 5.7%     |   |
| 34A (Hanson)      | 3                 | 0        | 0         | 0        | 0         | 0        | 0        | 0        | 0          | 3  | 1.0%     |   |
| 36A (Hughes)      | 3                 | 0        | 0         | 0        | 2         | 0        | 0        | 0        | 0          | 5  | 1.5%     |   |
| 37A (Hutchinson)  | 7                 | 2        | 0         | 0        | 0         | 0        | 0        | 0        | 0          | 8  | 2.6%     |   |
| 38A (Hyde)        | 3                 | 0        | 0         | 0        | 0         | 0        | 0        | 0        | 0          | 3  | 1.0%     |   |
| 40A (Jerauld)     | 2                 | 0        | 0         | 0        | 0         | 0        | 0        | 0        | 0          | 2  | 0.5%     |   |
| 42A (Kingsbury)   | 10                | 0        | 0         | 0        | 0         | 0        | 0        | 0        | 0          | 10 | 3.1%     |   |
| 43A (Lake)        | 15                | 0        | 2         | 0        | 0         | 0        | 0        | 0        | 0          | 16 | 5.2%     |   |
| 44A (Lincoln)     | 10                | 0        | 0         | 0        | 0         | 0        | 0        | 0        | 0          | 10 | 3.1%     |   |
| 46A (McCook)      | 0                 | 0        | 0         | 0        | 0         | 0        | 0        | 0        | 0          | 0  | 0.0%     |   |
| 47A (McPherson)   | 10                | 0        | 0         | 0        | 0         | 0        | 0        | 0        | 0          | 10 | 3.1%     |   |
| 48A (Marshall)    | 8                 | 0        | 0         | 0        | 0         | 0        | 0        | 0        | 0          | 8  | 2.6%     |   |
| 51A (Miner)       | 3                 | 0        | 0         | 0        | 0         | 0        | 0        | 0        | 0          | 3  | 1.0%     |   |
| 52A (Moody)       | 5                 | 0        | 2         | 0        | 0         | 0        | 0        | 0        | 0          | 7  | 2.1%     |   |
| 54A (Potter)      | 7                 | 0        | 0         | 0        | 0         | 0        | 0        | 0        | 0          | 7  | 2.1%     |   |
| 55A (Roberts)     | 12                | 0        | 0         | 0        | 0         | 0        | 0        | 0        | 0          | 12 | 3.6%     |   |
| 56A (Sanborn)     | 3                 | 0        | 2         | 0        | 0         | 0        | 0        | 0        | 0          | 5  | 1.5%     |   |
| 57A (Spink)       | 8                 | 0        | 0         | 0        | 0         | 0        | 0        | 0        | 0          | 8  | 2.6%     |   |
| 59A (W Sully)     | 2                 | 0        | 2         | 0        | 5         | 0        | 0        | 0        | 0          | 8  | 2.6%     |   |
| 59B (E Sully)     | 3                 | 0        | 0         | 0        | 0         | 0        | 2        | 0        | 0          | 5  | 1.5%     |   |
| 61A (Turner)      | 12                | 0        | 2         | 0        | 0         | 0        | 0        | 0        | 0          | 13 | 4.1%     |   |
| 62A (Union)       | 7                 | 0        | 0         | 0        | 0         | 0        | 0        | 0        | 0          | 7  | 2.1%     |   |
| 63A (Walworth)    | 3                 | 0        | 0         | 0        | 3         | 0        | 0        | 0        | 0          | 7  | 2.1%     |   |
| <b>TOTALS</b>     | <b>286</b>        | <b>2</b> | <b>12</b> | <b>0</b> | <b>18</b> | <b>0</b> | <b>2</b> | <b>0</b> | <b>319</b> |    |          |   |

Use these figures for approximations only!